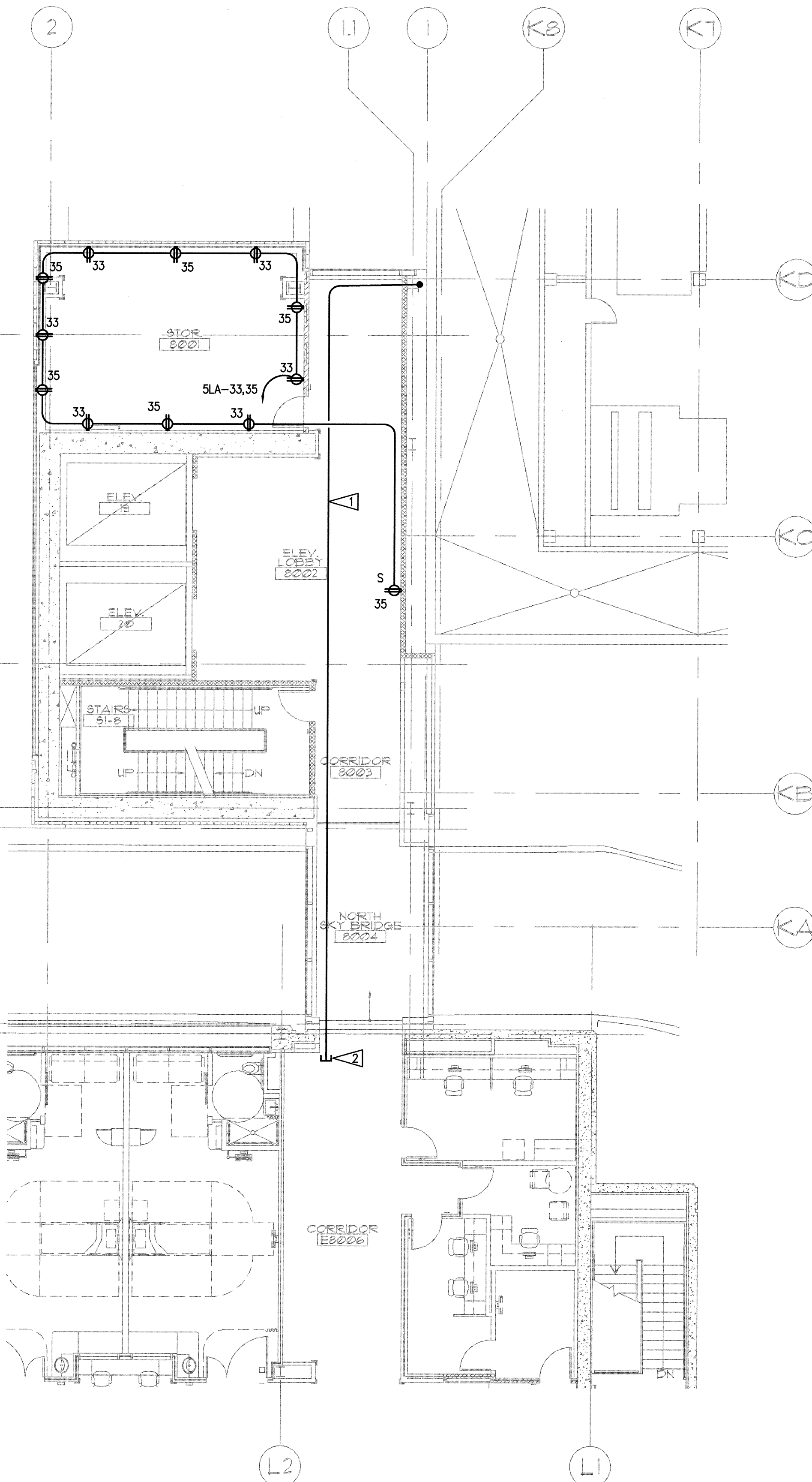
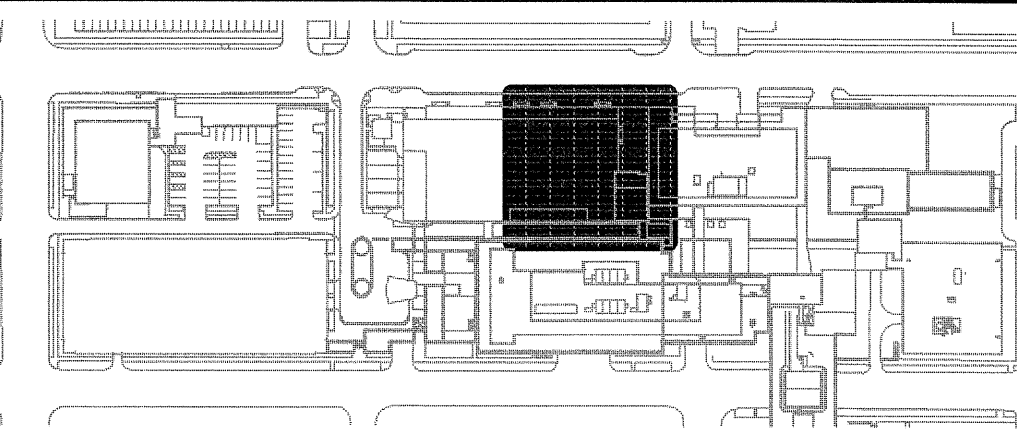


GENERAL NOTES

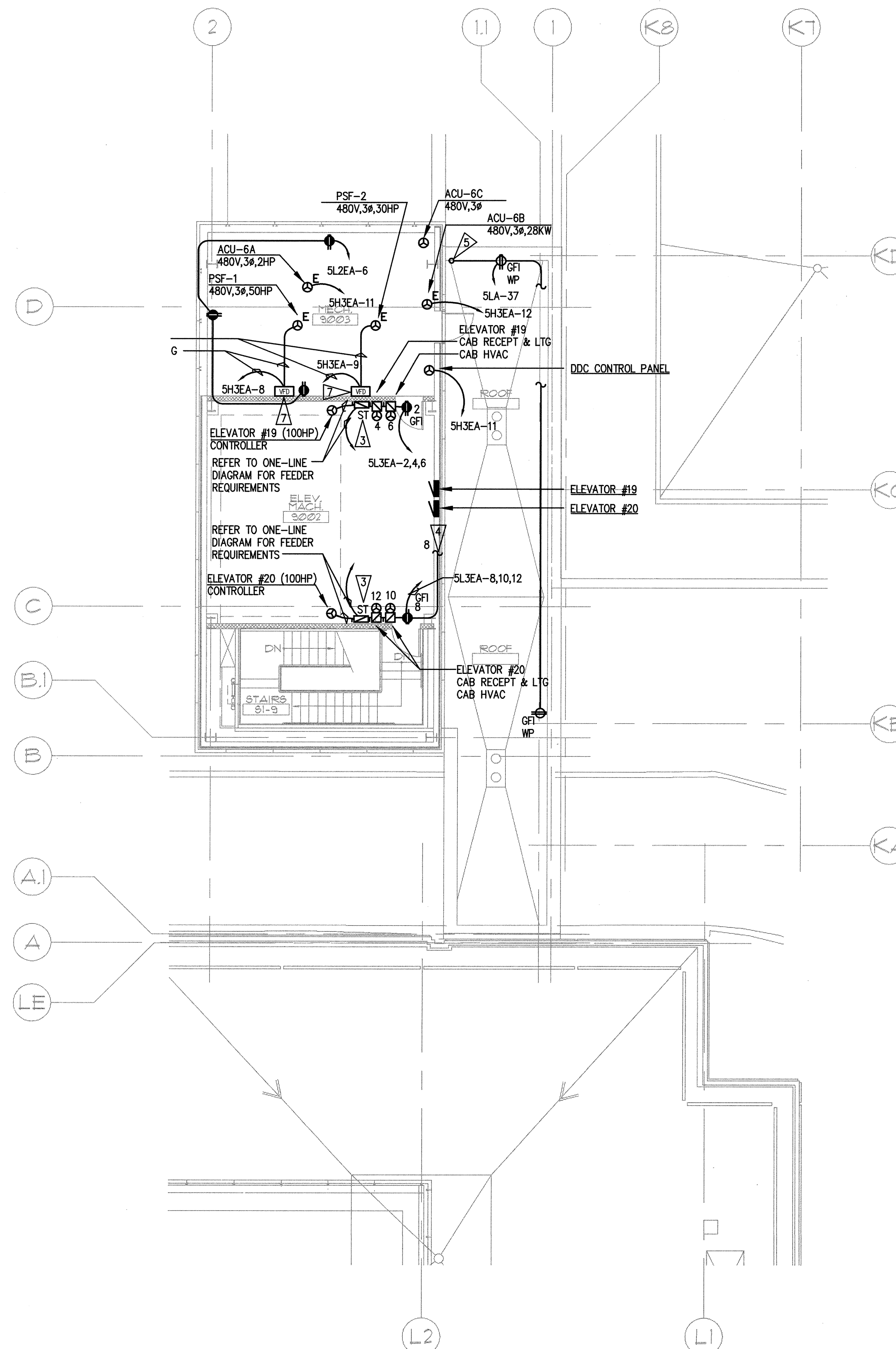
1. SEE ARCHITECTURAL PLANS, SECTIONS AND ELEVATIONS FOR EXACT EQUIPMENT AND DEVICE LOCATIONS, INCLUDING MOUNTING HEIGHTS.
2. PROVIDE RED DEVICES AND COVERPLATES FOR DEVICES SERVED FROM EMERGENCY POWER SYSTEM.
3. SEE ARCHITECTURAL PLANS FOR LOCATIONS OF SOUND, SMOKE AND FIRE RATED WALLS.
4. ABOVE COUNTER RECEPTACLES LOCATED WITHIN 5' OF SINK SHALL BE GFI RATED.
5. SEE MECHANICAL DRAWINGS FOR EXACT LOCATION OF MECHANICAL EQUIPMENT. COORDINATE WITH MECHANICAL CONTRACTOR PRIOR TO ROUGH-IN.
6. SEE MECHANICAL DRAWINGS FOR EXACT LOCATION OF ALL EQUIPMENT.
7. PROVIDE FUSES SIZED PER EQUIPMENT MANUFACTURER'S RECOMMENDATION. FIELD VERIFY EQUIPMENT NAMEPLATE OVER CURRENT AN DISCONNECT REQUIREMENTS PRIOR TO EQUIPMENT CONNECTION.
8. MOUNT ALL DISCONNECTS AND STARTERS INDEPENDENT OF MECHANICAL EQUIPMENT IN A READILY ACCESSIBLE LOCATION. COORDINATE EXACT LOCATIONS WITH FINAL EQUIPMENT LAYOUT AND ORIENTATION.
9. ALL ELECTRICAL EQUIPMENT ON ROOF SHALL BE WEATHERPROOF.
10. ALL PENETRATIONS IN SUPPORT OF ELECTRICAL CIRCUITRY OR EQUIPMENT SUPPORT SHALL MATCH THOSE REQUIRED AND DETAILED BY THE ARCHITECT. COORDINATE AS REQUIRED PRIOR TO ROUGH-IN.
11. ALL WIRING TO ROOFTOP RECEPTACLES SHALL BE #10 AWG UNLESS OTHERWISE NOTED.
12. SURFACE MOUNTED WIRING ON ROOF IS PROHIBITED. ALL WIRING TO BE ROUTED IN CEILING SPACE BELOW ROOF.

FLAG NOTES

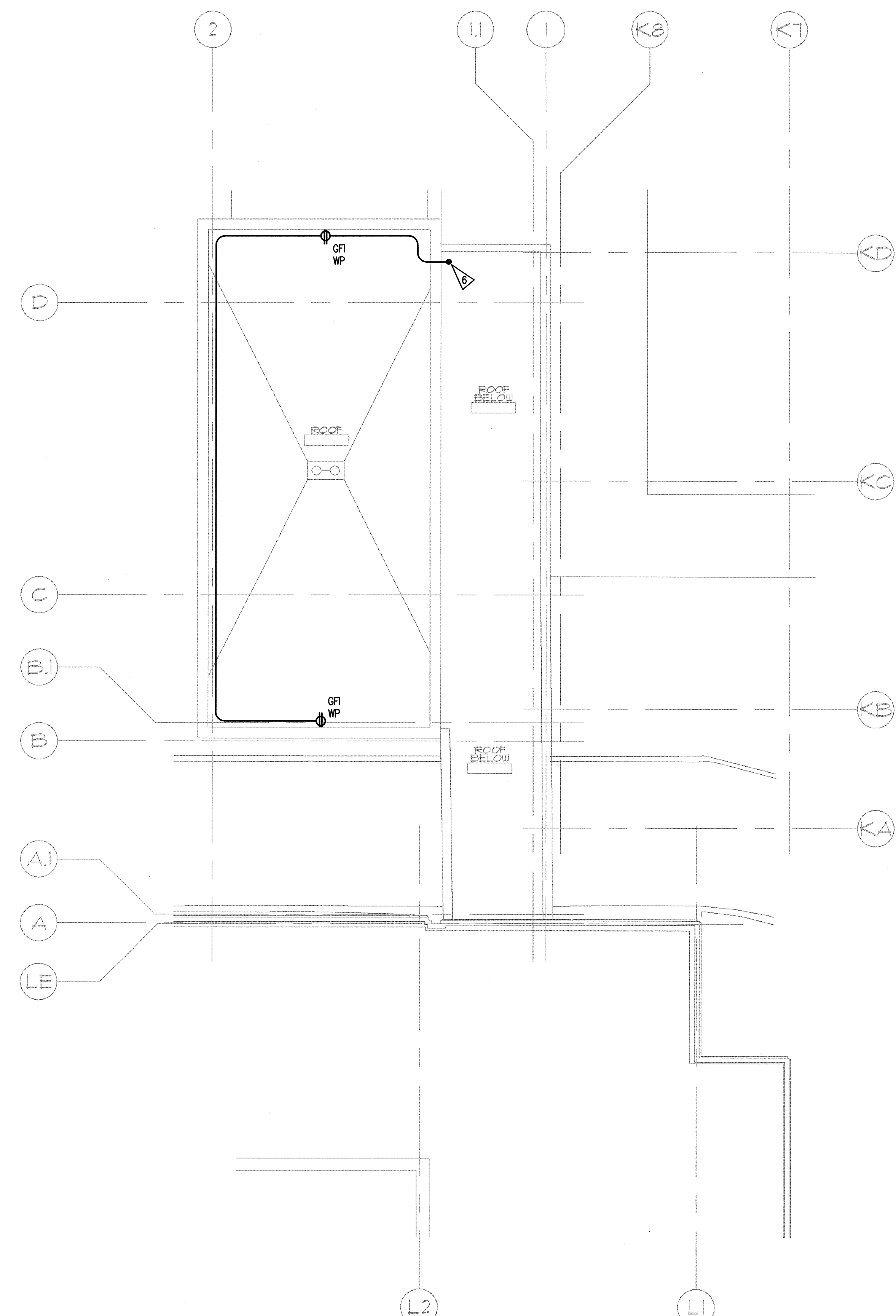
- ▷ RACEWAY ROUTING FOR COOLING TOWER. REFER TO FLAG NOTE #8 ON SHEET E3.11 FOR MORE INFORMATION.
- ▷ REFER TO SHEET E3.39 FOR L-WING ROOF PLAN TO CONTINUE FEEDER TO COOLING TOWER.
- ▷ PROVIDE SHUNT TRIP MOLDED CASE CIRCUIT BREAKER. REFER TO DETAIL 5/E3.00 FOR ADDITIONAL REQUIREMENTS AND INFORMATION.
- ▷ CONNECT CIRCUIT TO ELEVATOR MACHINE ROOM LIGHTING. DO NOT CONNECT LIGHTING TO LOAD SIDE OF GFI PROTECTION.
- ▷ SEE DETAIL 3/E3.18 FOR CONTINUATION.
- ▷ SEE DETAIL 2/E3.18 FOR CONTINUATION.
- ▷ VFD PROVIDED BY DIVISION 23. CONTRACTOR SHALL PROVIDE AND MAKE ALL REQUIRED INTERCONNECTIONS.



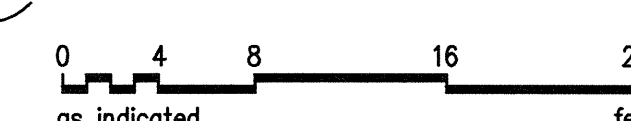
1 PARTIAL EIGHTH FLOOR PLAN - NORTH - POWER
E3.18 SCALE: AS INDICATED



2 PARTIAL NINTH FLOOR PLAN - NORTH - POWER
E3.18 SCALE: AS INDICATED

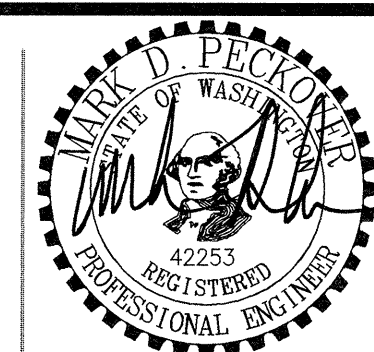


3 ROOF PLAN - NORTH - POWER
E3.18 SCALE: AS INDICATED



SPARLING
ELECTRICAL ENGINEERING | TECHNOLOGY CONSULTING

GIFFIN • BOLTE • JURGENS
ARCHITECTS
819 S.W. SECOND AVENUE • PORTLAND, OREGON 97204
(503) 223-0992 www.gbjarch.com FAX (503) 244-3961



MultiCare
EMERGENCY DEPARTMENT & CANCER CENTER EXPANSION
TACOMA, WASHINGTON

Date 09-26-2008
Scale AS INDICATED
Drawn By JL
Job No. 4034

PARTIAL
8TH & 9TH FLOOR /
ROOF PLAN NORTH
POWER

E3
18