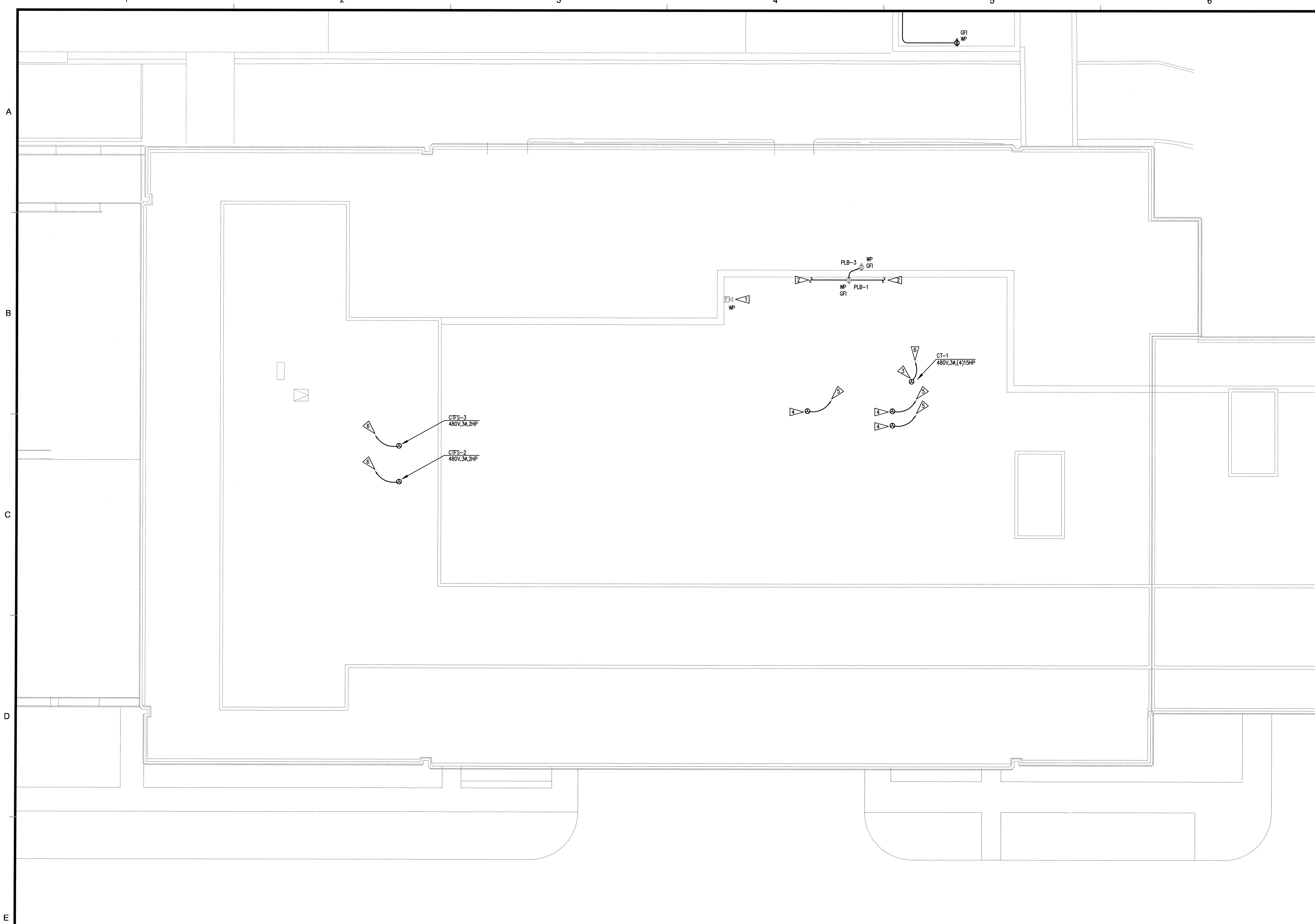
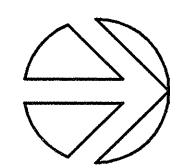


N:\B13608\CA00-05\317.E3-39.DWG SEP 25, 2008 - 12:28:16 PM BY: TWHITE



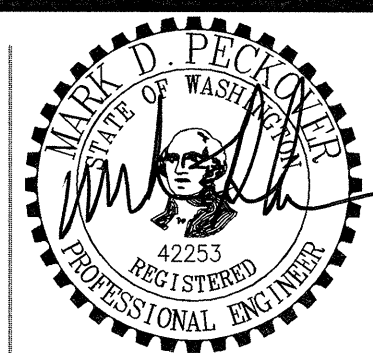
1 PENTHOUSE L-WING PLAN - POWER / SYSTEMS
E3.39 SCALE: AS INDICATED
0 4 8 16 24
as indicated feet



SPARLING
ELECTRICAL ENGINEERING / TECHNOLOGY CONSULTING

GIFFIN • BOLTE • JURGENS
ARCHITECTS

815 S.W. SECOND AVENUE • PORTLAND, OREGON 97204
(503) 223-0992 www.gbjaarch.com FAX (503) 294-3961



MultiCare

EMERGENCY DEPARTMENT & CANCER CENTER EXPANSION

TACOMA, WASHINGTON

Date 09-26-2008
Scale AS INDICATED
Drawn By JL
Job No. 4034

**PENTHOUSE
L-WING PLAN -
POWER / SYATEMS**

**E3
39**

GENERAL NOTES

- SEE SCHEDULE ON E3.1 FOR MECHANICAL EQUIPMENT CONNECTION REQUIREMENTS AND CIRCUITS.
- SEE MECHANICAL DRAWINGS FOR EXACT LOCATION OF ALL EQUIPMENT.
- PROVIDE FUSES SIZED PER EQUIPMENT MANUFACTURER'S RECOMMENDATION. FIELD VERIFY EQUIPMENT NAMEPLATE OVER CURRENT AN DISCONNECT REQUIREMENTS PRIOR TO EQUIPMENT CONNECTION.
- MOUNT ALL DISCONNECTS AND STARTERS INDEPENDENT OF MECHANICAL EQUIPMENT IN A READILY ACCESSIBLE LOCATION. COORDINATE EXACT LOCATIONS WITH FINAL EQUIPMENT LAYOUT AND ORIENTATION.
- ALL ELECTRICAL EQUIPMENT ON ROOF SHALL BE WEATHERPROOF.
- ALL PENETRATIONS IN SUPPORT OF ELECTRICAL CIRCUITRY OR EQUIPMENT SUPPORT SHALL MATCH THOSE REQUIRED AND DETAILED BY THE ARCHITECT. COORDINATE AS REQUIRED PRIOR TO ROUGH-IN.
- ALL WIRING TO ROOFTOP RECEPTACLES SHALL BE #10 AWG UNLESS OTHERWISE NOTED.
- SURFACE MOUNTED WIRING ON ROOF IS PROHIBITED. ALL WIRING TO BE ROUTED IN CEILING SPACE BELOW ROOF.

FLAG NOTES

- INSTALL EXISTING EQUIPMENT IN LOCATION SHOWN.
- CONNECT COMPLETE TO EXISTING CIRCUIT TO MAINTAIN CONTINUITY.
- SINGLE POINT CONNECTION FOR COOLING TOWER DISTRIBUTION PANEL PROVIDED BY DIVISION 23. CONTRACTOR SHALL PROVIDE ALL REQUIRED INTERCONNECTING CONDUIT AND WIRING FOR EACH COOLING TOWER CELL AND HEATERS. REFER TO 1/E3.18 FOR CONDUIT ROUTING.
- HEAT TRACE CONNECTION. COORDINATE LOCATION WITH MECHANICAL CONTRACTOR. INSTALLATION OF HEAT TRACE, ALL ASSOCIATED DEVICES AND CONTROL BY MECHANICAL CONTRACTOR.
- CONNECT COMPLETE TO EXISTING NORMAL PANEL. COORDINATE VOLTAGE, PHASE AND LOAD REQUIREMENTS WITH MECHANICAL CONTRACTOR PRIOR TO ROUGH-IN. PROVIDE NEW CIRCUIT BREAKER AND AS NECESSARY.
- ROUTE TO SPARE BUCKET IN MCC PHASE3 AND CONNECT COMPLETE.