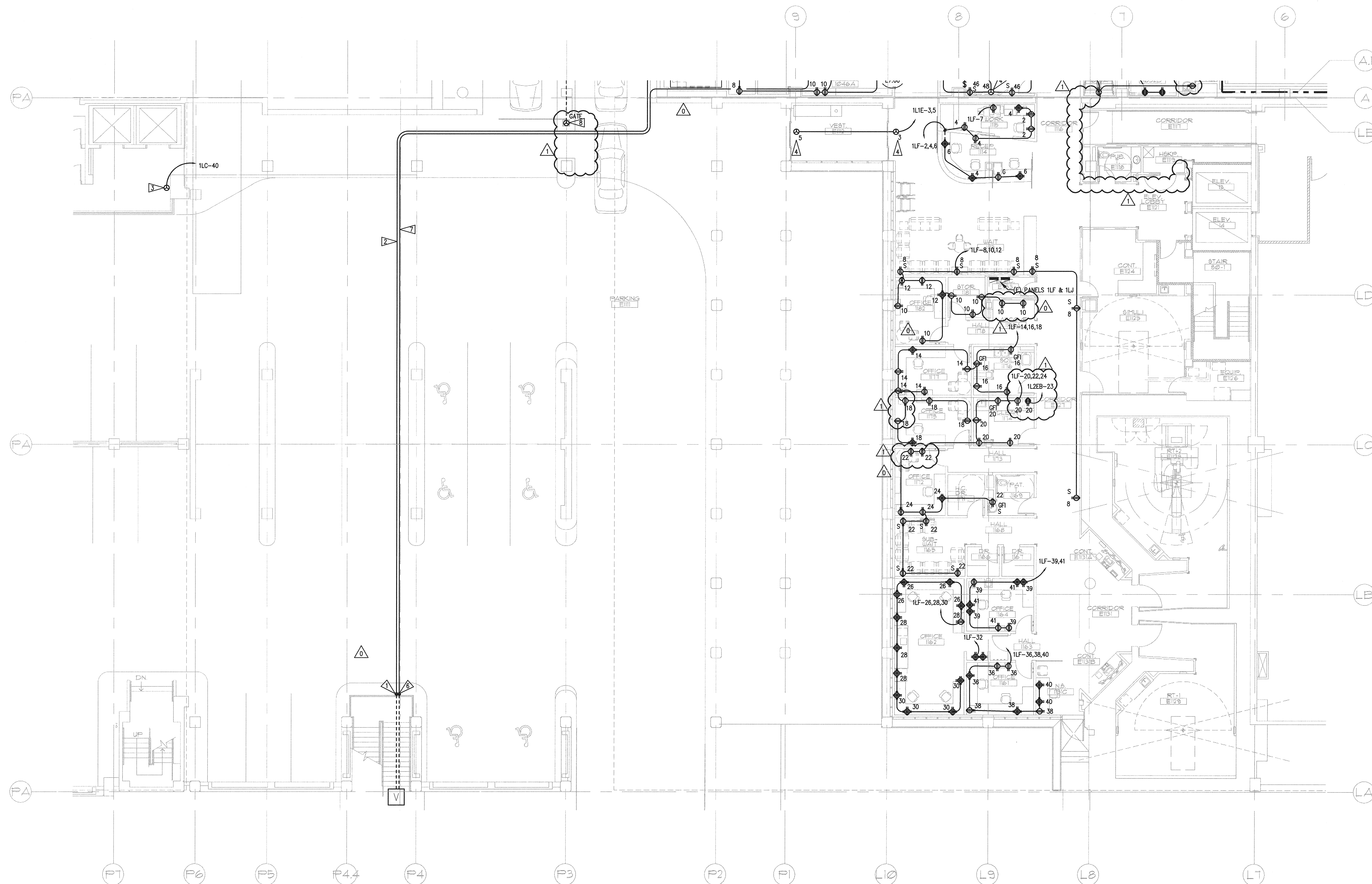


N:\915606\CAUD-05\02_E3-31.DWG DEC 18, 2008 - 11:44:35 AM BY: JLO



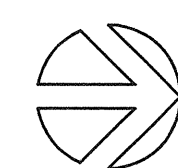
GENERAL NOTES

1. SEE ARCHITECTURAL PLANS, SECTIONS AND ELEVATIONS FOR EXACT EQUIPMENT AND DEVICE LOCATIONS, INCLUDING MOUNTING HEIGHTS.
2. PROVIDE RED DEVICES AND COVERPLATES FOR DEVICES SERVED FROM EMERGENCY POWER SYSTEM.
3. SEE ARCHITECTURAL PLANS FOR LOCATIONS OF SOUND, SMOKE AND FIRE RATED WALLS.
4. ABOVE COUNTER RECEPTACLES LOCATED WITHIN 5' OF SINK SHALL BE GFI RATED.
5. SEE MECHANICAL DRAWINGS FOR EXACT LOCATION OF MECHANICAL EQUIPMENT. COORDINATE WITH MECHANICAL CONTRACTOR PRIOR TO ROUGH-IN.

FLAG NOTES

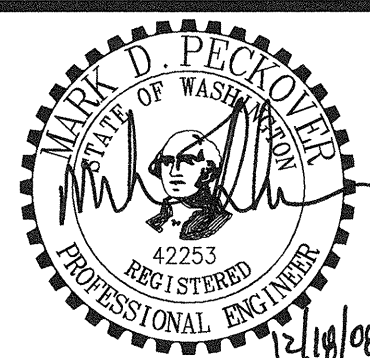
- CONNECT NEW (2) 5" C WITH EXISTING RACEWAY TO COMPLETE RACEWAY PATH FOR MEDIUM VOLTAGE EMERGENCY POWER. FEEDER SHOWN ON E6.03 SHALL BE PROVIDED COMPLETE TO VAULT SHOWN EAST OF STAIRWELL.
- PROVIDE (2) 5" C TO SWITCHGEAR CP-S2MCE IN CENTRAL ENERGY PLANT. REFER TO SHEET E6.03 FOR MV FEEDER REQUIREMENTS.
- PROVIDE HARD WIRED CONNECTION TO IRRIGATION CONTROLLER. CONFIRM EXACT LOCATION AND ELECTRICAL REQUIREMENTS WITH LANDSCAPE ENGINEER PRIOR TO ROUGH IN.
- PROVIDE HARD WIRED CONNECTION TO AUTO-DOOR MOTOR. PROVIDE ALL REQUIRED CONDUIT, WIRING AND ELECTRICAL DOOR HARDWARE. CONFIRM REQUIREMENTS WITH ARCHITECTURAL DOOR HARDWARE SCHEDULE.
- EXTEND (1) 3/4" CONDUIT TO TRANSFORMER VAULT ROOM 1083. CONNECT CONDUIT TO PANEL 1LA.
- CONNECT (1) 3/4" C WITH EXISTING RACEWAY TO COMPLETE PATH FOR 120V POWER FOR VAULT.
- PROVIDE (1) 3/4" C TO PANEL 1L2EB AND CONNECT COMPLETE.
- PROVIDE CONDUIT AND CONDUCTORS FOR LOOP CONNECTIONS PER MANUFACTURER REQUIREMENTS. COORDINATE WITH OWNER AND MANUFACTURER PRIOR TO ROUGH-IN.

1 FIRST FLOOR PLAN L-WING REMODEL - POWER
E3.31
SCALE: AS INDICATED
0 4 8 16 24
as indicated feet



GIFFIN • BOLTE • JURGENS
ARCHITECTS

815 S.W. SECOND AVENUE • PORTLAND, OREGON 97204
(503) 223-0992 www.gbjarch.com FAX (503) 294-3961



MultiCare
EMERGENCY DEPARTMENT & CANCER CENTER EXPANSION
TACOMA, WASHINGTON

100% CD SET 9/26/08
CCD #4 12/17/08

Date 09-26-2008
Scale AS INDICATED
Drawn By JL
Job No. 4034

FIRST FLOOR
PLAN L-WING
REMODEL -
POWER

E3
31