

N:\3608\CADD-05\312.E3-35.DWG FEB 13, 2009 - 11:25:01 AM BY: TW:HITE

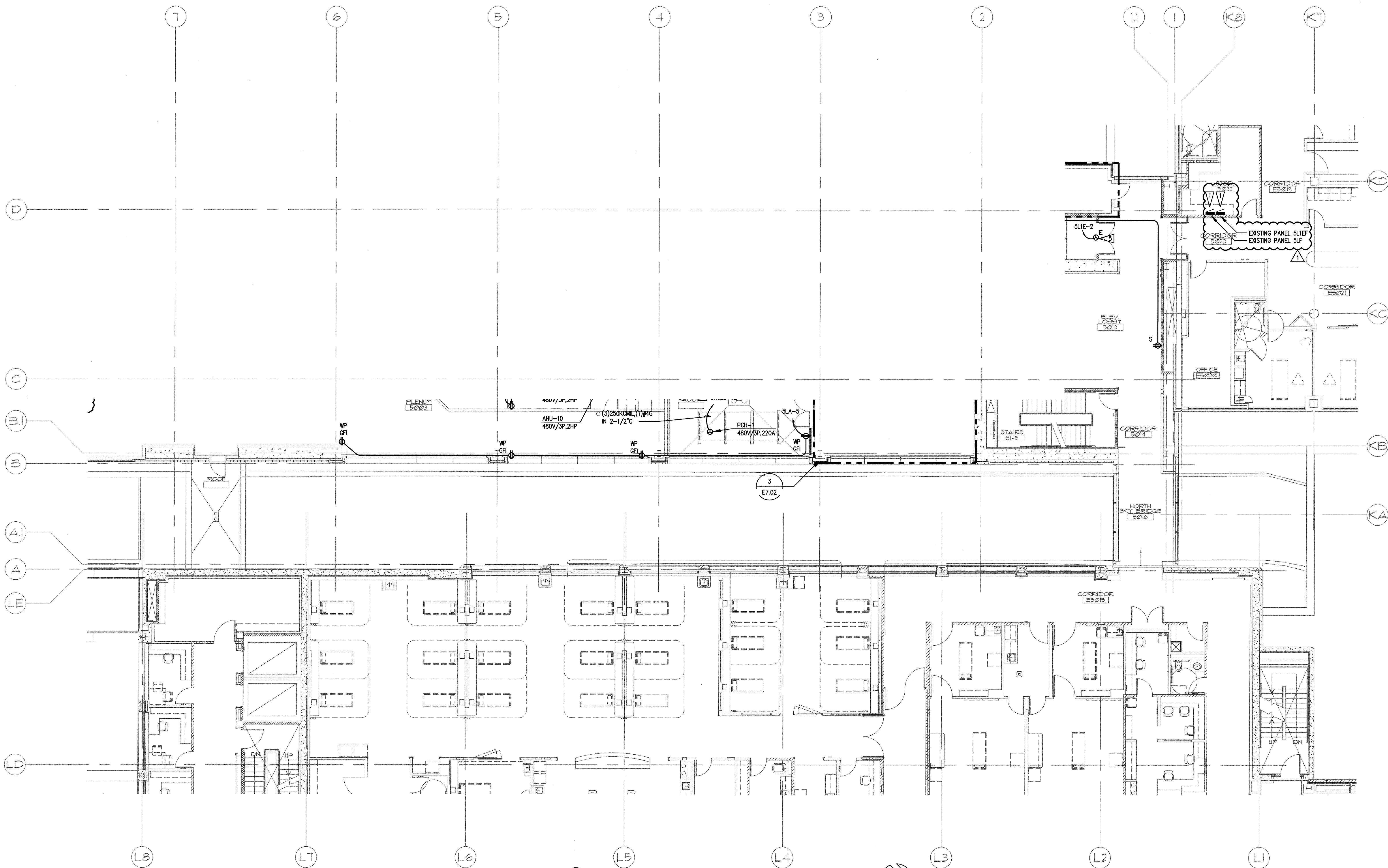
A

B

C

D

E



1 FIFTH FLOOR PLAN - L-WING & K-WING REMODEL - POWER
E3.35
SCALE: AS INDICATED

0 4 8 16 24
as indicated feet

GENERAL NOTES

1. SEE ARCHITECTURAL PLANS, SECTIONS AND ELEVATIONS FOR EXACT EQUIPMENT AND DEVICE LOCATIONS, INCLUDING MOUNTING HEIGHTS.
2. PROVIDE RED DEVICES AND COVERPLATES FOR DEVICES SERVED FROM EMERGENCY POWER SYSTEM.
3. SEE ARCHITECTURAL PLANS FOR LOCATIONS OF SOUND, SMOKE AND FIRE RATED WALLS.
4. ABOVE COUNTER RECEPTACLES LOCATED WITHIN 5' OF SINK SHALL BE GFI RATED.
5. SEE MECHANICAL DRAWINGS FOR EXACT LOCATION OF MECHANICAL EQUIPMENT. COORDINATE WITH MECHANICAL CONTRACTOR PRIOR TO ROUGH-IN.

FLAG NOTES

- REINSTALL EXISTING PANELS AS SHOWN. EXTEND ALL EXISTING CIRCUITS AND CONNECT TO SAME PANEL AND CIRCUIT PRIOR TO RELOCATION.

GIFFIN • BOLTE • JURGENS *p.c.*
ARCHITECTS

815 S.W. SECOND AVENUE • PORTLAND, OREGON 97204
(503) 223-0992 • www.gbjarch.com • FAX (503) 294-3961



MultiCare
EMERGENCY DEPARTMENT & CANCER CENTER EXPANSION

TACOMA, WASHINGTON

100% CD SET 9/26/08
CCD #7 2/20/09

Date 09-26-2008
Scale AS INDICATED
Drawn By JL
Job No. 4034

FIFTH FLOOR
PLAN - L-WING &
K-WING REMODEL -
POWER

E3
35