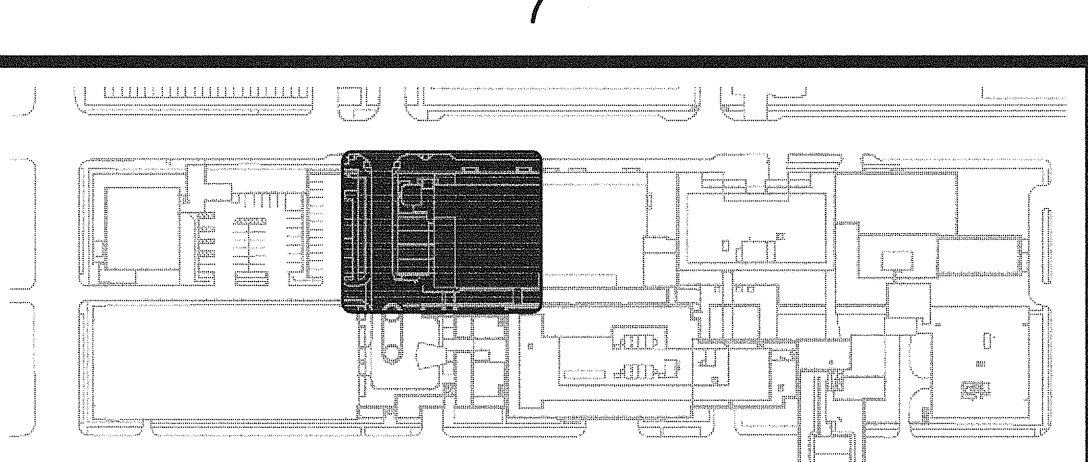
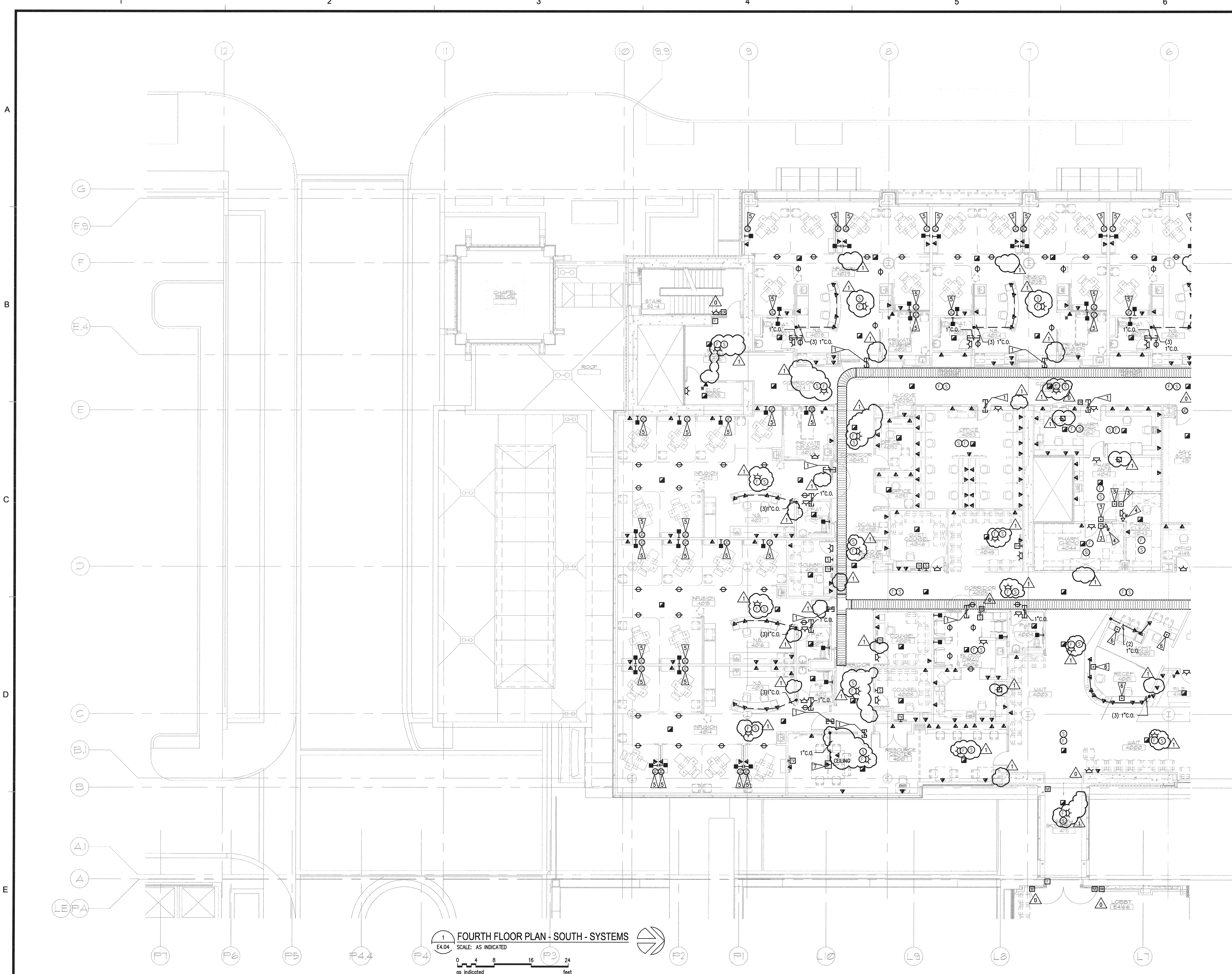


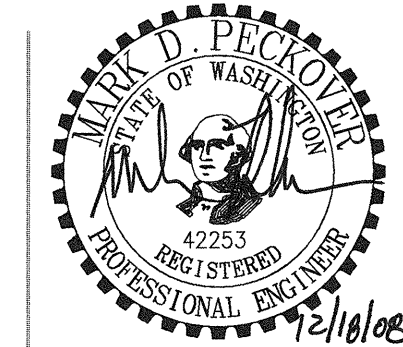
N:\015608\CAUD-05\109_E4-04.DWG DEC 18, 2008 - 11:41:41 AM BY: JLD



- GENERAL NOTES**
1. SEE ARCHITECTURAL PLANS, SECTIONS AND ELEVATIONS FOR EXACT EQUIPMENT AND DEVICE LOCATIONS.
 2. SEE ARCHITECTURAL PLANS FOR LOCATIONS OF SOUND, SMOKE AND FIRE RATED WALLS.
 3. REFER TO MECHANICAL DRAWINGS FOR FIRE/SMOKE DAMPER LOCATIONS. PROVIDE FIRE ALARM MONITORING POINT FOR EACH FIRE/SMOKE DAMPER.
 4. CONTRACTOR SHALL OBTAIN THE FINAL OWNER APPROVED HILLROM NURSE CALL SHOP DRAWINGS PRIOR TO ROUGH-IN.
- FLAG NOTES**
- △ PROVIDE (1) 3.5"x3.5" SQUARE EZ PATH DEVICES OR APPROVED.
 - △ POWER CONNECTION FOR AUTO DOOR.
 - △ PUSH PLATE FOR AUTO DOOR. PROVIDE CONNECTION AS SHOWN.
 - △ PROVIDE BACK BOX AND 1" CONDUIT TO ACCESSIBLE CEILING FOR OWNER PROVIDED INTERCOM. COORDINATE WITH OWNER PRIOR TO ROUGH-IN.
 - △ CONNECTION FOR OWNER PROVIDED ARM MOUNTED TV.
 - △ PANIC BUTTON CONNECTION.
 - △ COMBINATION FLOOR BOX WITH POWER.

1 FOURTH FLOOR PLAN - SOUTH - SYSTEMS
E4.04
SCALE: AS INDICATED
0 4 8 16 24
feet
as indicated

GIFFIN • BOLTE • JURGENS
ARCHITECTS
815 S.W. SECOND AVENUE • PORTLAND, OREGON 97204
(503) 223-0992 www.gbjaarch.com FAX (503) 294-3961



MultiCare
EMERGENCY DEPARTMENT & CANCER CENTER EXPANSION
TACOMA, WASHINGTON

100% CD SET 9/26/08
CCD #4 12/17/08

Date 09-26-2008
Scale AS INDICATED
Drawn By JL
Job No. 4034

**FOURTH FLOOR
PLAN - SOUTH
SYSTEMS**

**E4
04**