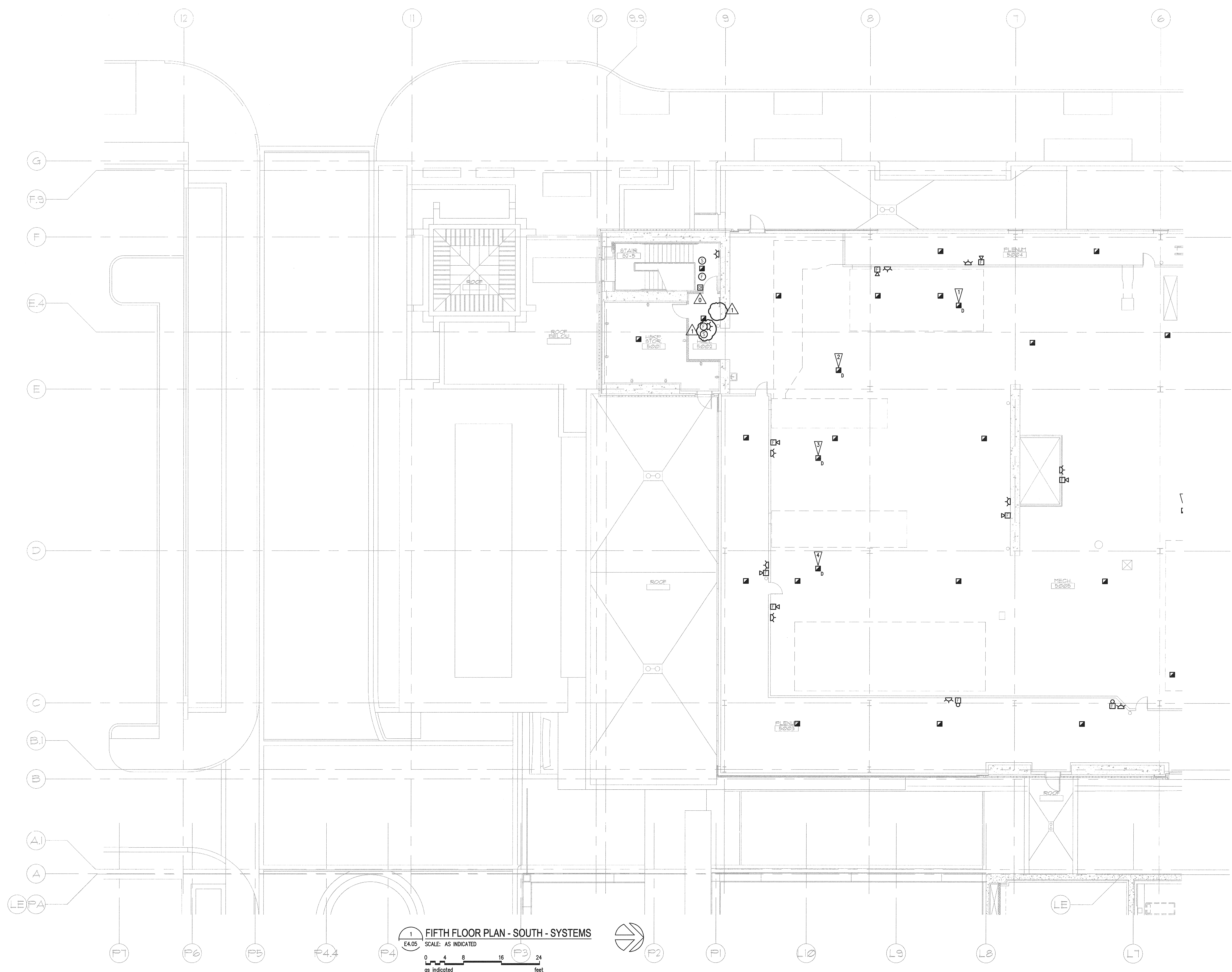
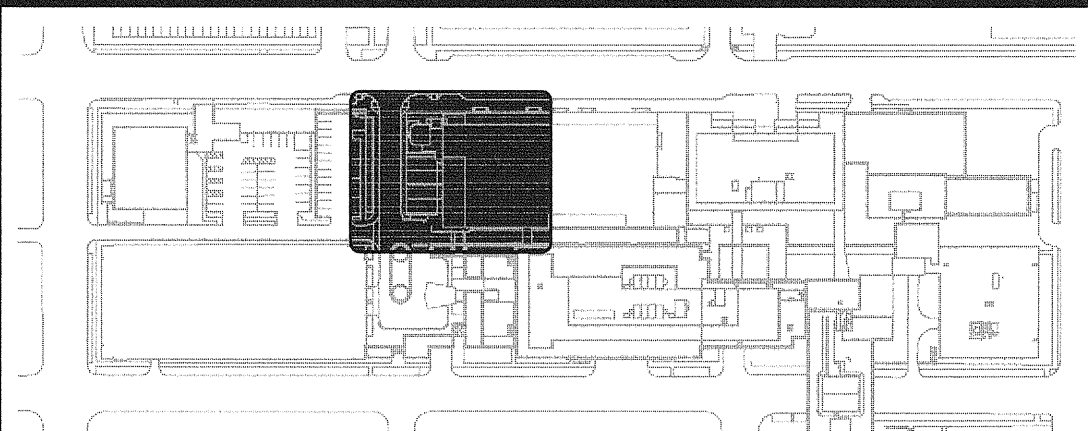


N:\B13608\CADD-05\411\_E4-05.DWG DEC 18, 2008 - 11:41:25 AM BY: JLUO

A  
B  
C  
D  
E



1 FIFTH FLOOR PLAN - SOUTH - SYSTEMS  
E4.05  
SCALE: AS INDICATED  
0 4 8 16 24  
as indicated feet



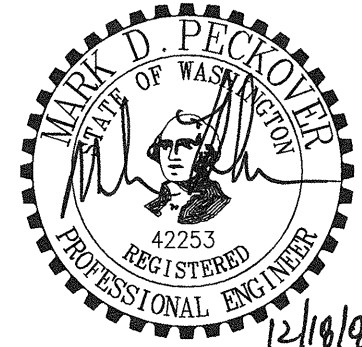
#### GENERAL NOTES

1. SEE ARCHITECTURAL PLANS, SECTIONS AND ELEVATIONS FOR EXACT EQUIPMENT AND DEVICE LOCATIONS.
2. SEE ARCHITECTURAL PLANS FOR LOCATIONS OF SOUND, SMOKE AND FIRE RATED WALLS.
3. REFER TO MECHANICAL DRAWINGS FOR FIRE/SMOKE DAMPER LOCATIONS. PROVIDE FIRE ALARM MONITORING POINT FOR EACH FIRE/SMOKE DAMPER.
4. CONTRACTOR SHALL OBTAIN THE FINAL OWNER APPROVED HILLROM NURSE CALL SHOP DRAWINGS PRIOR TO ROUGH-IN.

#### FLAG NOTES

- △ PROVIDE DUCT DETECTOR FOR EF-2. COORDINATE WITH MECHANICAL CONTRACTOR PRIOR TO ROUGH-IN.
- △ PROVIDE DUCT DETECTOR FOR REF-1. COORDINATE WITH MECHANICAL CONTRACTOR PRIOR TO ROUGH-IN.
- △ PROVIDE DUCT DETECTOR FOR AHU-1. COORDINATE WITH MECHANICAL CONTRACTOR PRIOR TO ROUGH-IN.
- △ PROVIDE DUCT DETECTOR FOR AHU-2. COORDINATE WITH MECHANICAL CONTRACTOR PRIOR TO ROUGH-IN.

GIFFIN • BOLTE • JURGENS p.c.  
ARCHITECTS  
815 S.W. SECOND AVENUE • PORTLAND, OREGON 97204  
(503) 223-0992 www.gbjaarch.com FAX (503) 294-3961



MultiCare  
EMERGENCY DEPARTMENT & CANCER CENTER EXPANSION  
TACOMA, WASHINGTON

100% CD SET 9/26/08  
CCD #4 12/17/08

Date 09-26-2008  
Scale AS INDICATED  
Drawn By JL  
Job No. 4034

FIFTH FLOOR  
PLAN - SOUTH  
SYSTEMS

E4  
05