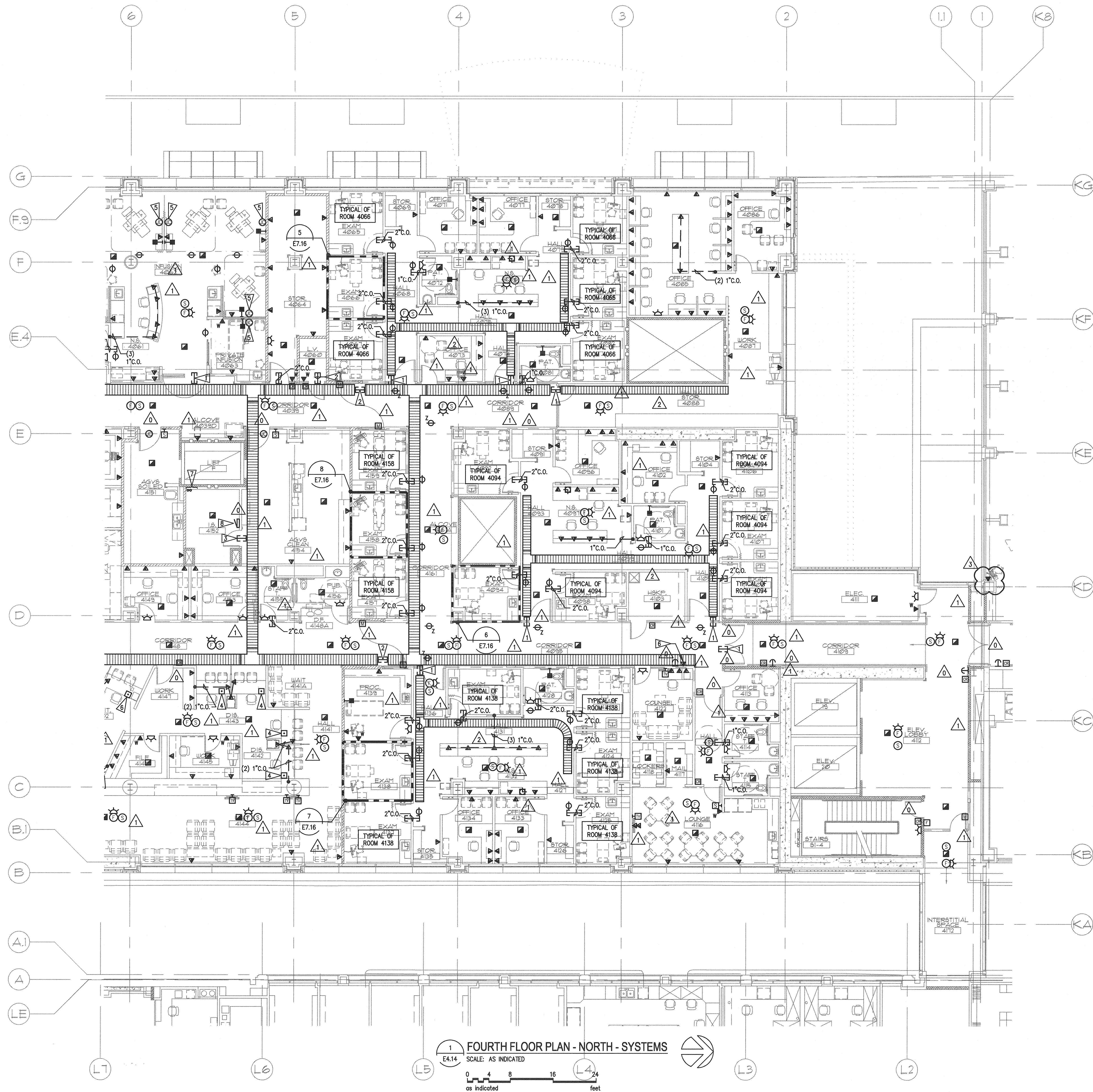


N:\B13608\CADD-05\410_E4-14.DWG MAY 27, 2009 - 2:36:02 PM BY: TWHITE

A
B
C
D
E
F
G
H
I
J
K
L
M



1 FOURTH FLOOR PLAN - NORTH - SYSTEMS
SCALE: AS INDICATED
0 4 8 16 24
feet
as indicated

GENERAL NOTES

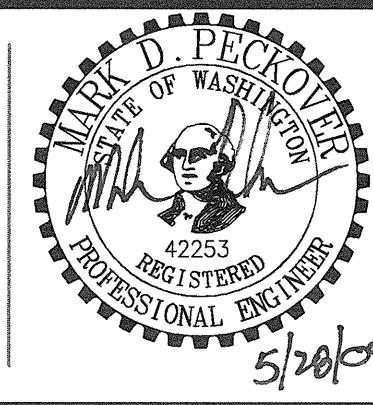
1. SEE ARCHITECTURAL PLANS, SECTIONS AND ELEVATIONS FOR EXACT EQUIPMENT AND DEVICE LOCATIONS.
2. SEE ARCHITECTURAL PLANS FOR LOCATIONS OF SOUND, SMOKE AND FIRE RATED WALLS.
3. REFER TO MECHANICAL DRAWINGS FOR FIRE/SMOKE DAMPER LOCATIONS. PROVIDE FIRE ALARM MONITORING POINT FOR EACH FIRE/SMOKE DAMPER.
4. CONTRACTOR SHALL OBTAIN THE FINAL OWNER APPROVED HILLROM NURSE CALL SHOP DRAWINGS PRIOR TO ROUGH-IN.

FLAG NOTES

- 1 PROVIDE (1) 3.5"x3.5" SQUARE EZ-PATH DEVICE OR APPROVED.
- 2 PROVIDE (2) 3.5"x3.5" SQUARE EZ-PATH DEVICES OR APPROVED.
- 3 PROVIDE (4) 3.5"x3.5" SQUARE EZ-PATH DEVICES OR APPROVED.
- 4 PANIC BUTTON CONNECTION.
- 5 CONNECTION FOR OWNER PROVIDED ARM MOUNTED TV.
- 6 TIME CARD CONNECTION VERIFY LOCATION WITH ARCHITECT PRIOR TO ROUGH-IN.
- 7 PROVIDE (2) 3.5" X 3.5" EZ PATH DEVICES THROUGH FOURTH FLOOR TO FIFTH FLOOR. PROVIDE ALL FLOOR MOUNTING ACCESSORIES TO PROVIDE A COMPLETE SYSTEM.
- 8 PROVIDE FIRE ALARM TERMINATION CABINET IN IS ROOM AS SHOWN.

GIFFIN • BOLTE • JURGENS P.C.
ARCHITECTS

815 S.W. SECOND AVENUE, PORTLAND, OREGON 97204
(503) 223-0992 www.gbjarch.com FAX (503) 294-3961



EMERGENCY DEPARTMENT & CANCER CENTER EXPANSION

MultiCare

TACOMA, WASHINGTON

- 1 100% CD SET 9/26/08
- 2 CCD #4 12/17/08
- 3 CCD #7 2/20/09
- 4 CCD #12 5/26/09

Date 09-26-2008
Scale AS INDICATED
Drawn By JL
Job No. 4034

FOURTH FLOOR
PLAN - NORTH
SYSTEMS

E4
14