

N:\B13608\CADD-05\412_E4-15.DWG DEC 16, 2008 - 11:41:19 AM BY: JLUO

A
B
C
D
E

1

2

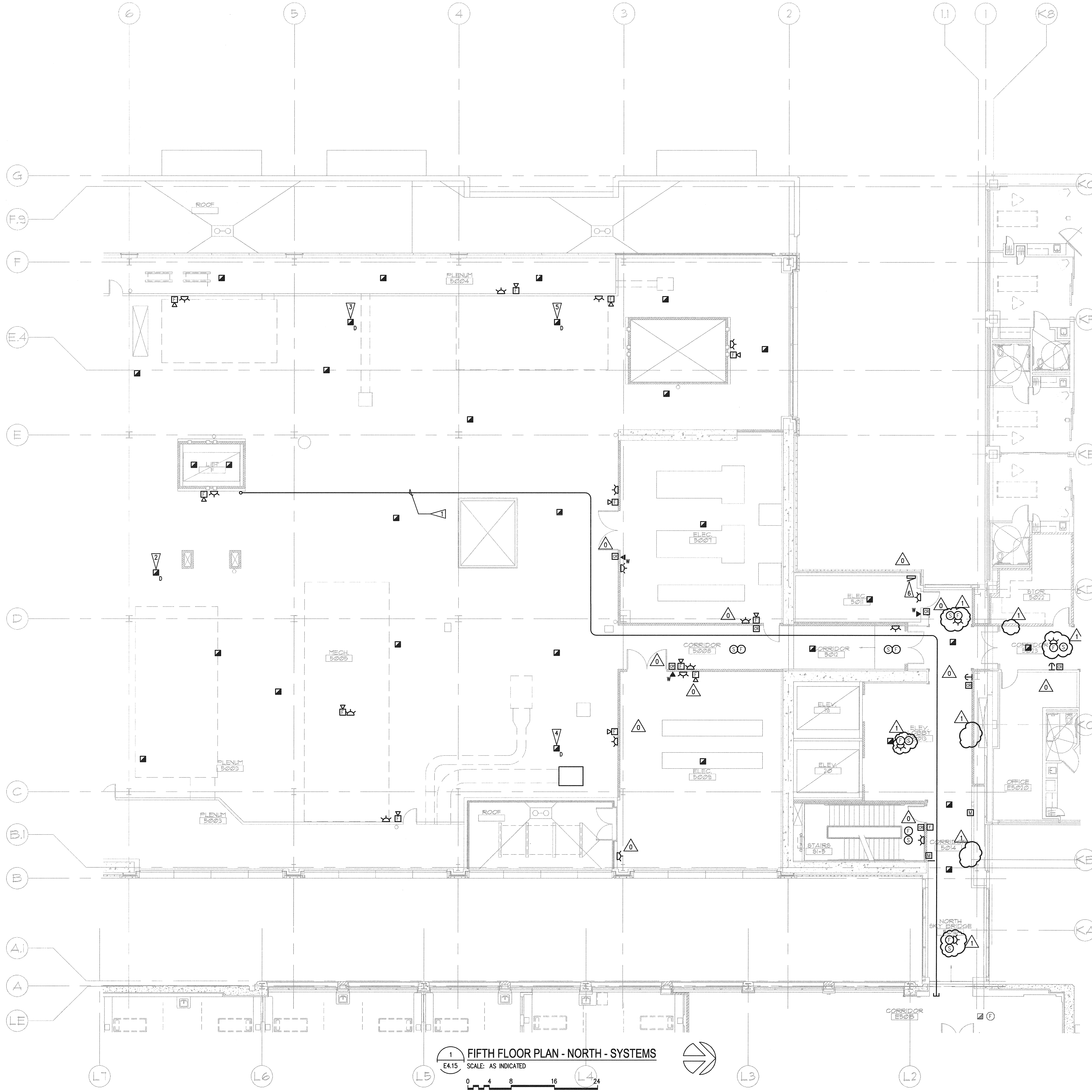
3

4

5

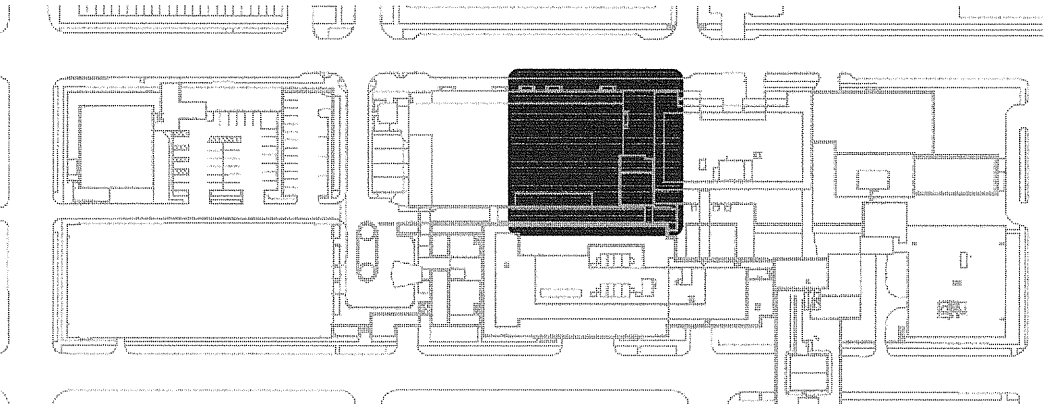
6

7

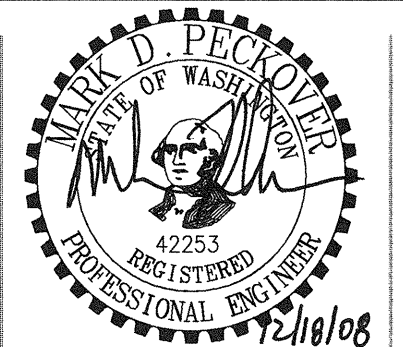


1 FIFTH FLOOR PLAN - NORTH - SYSTEMS
E4.15
SCALE: AS INDICATED
0 4 8 16 24
as indicated feet

- GENERAL NOTES**
1. SEE ARCHITECTURAL PLANS, SECTIONS AND ELEVATIONS FOR EXACT EQUIPMENT AND DEVICE LOCATIONS.
 2. SEE ARCHITECTURAL PLANS FOR LOCATIONS OF SOUND, SMOKE AND FIRE RATED WALLS.
 3. REFER TO MECHANICAL DRAWINGS FOR FIRE/SMOKE DAMPER LOCATIONS. PROVIDE FIRE ALARM MONITORING POINT FOR EACH FIRE/SMOKE DAMPER.
 4. CONTRACTOR SHALL OBTAIN THE FINAL OWNER APPROVED HILLROM NURSE CALL SHOP DRAWINGS PRIOR TO ROUGH-IN.
- FLAG NOTES**
- PROVIDE (1) 4" CONDUIT FOR FIBER OPTIC CABLE CONNECTION TO L-WING. STUB CONDUIT INTO 4TH FLOOR IS ROOM AS SHOWN.
 - PROVIDE DUCT DETECTOR FOR AHU-4. COORDINATE WITH MECHANICAL CONTRACTOR PRIOR TO ROUGH-IN.
 - PROVIDE DUCT DETECTOR FOR REF-4. COORDINATE WITH MECHANICAL CONTRACTOR PRIOR TO ROUGH-IN.
 - PROVIDE DUCT DETECTOR FOR AHU-3. COORDINATE WITH MECHANICAL CONTRACTOR PRIOR TO ROUGH-IN.
 - PROVIDE DUCT DETECTOR FOR EF-3. COORDINATE WITH MECHANICAL CONTRACTOR PRIOR TO ROUGH-IN.
 - PROVIDE FIRE ALARM TERMINATION CABINET IN ELECTRICAL ROOM AS SHOWN.



GIFFIN • BOLTE • JURGENS
ARCHITECTS
815 S.W. SECOND AVENUE • PORTLAND, OREGON 97204
(503) 223-0992 www.gbjarch.com FAX (503) 294-3961



MultiCare
EMERGENCY DEPARTMENT & CANCER CENTER EXPANSION
TACOMA, WASHINGTON

100% CD SET 9/26/08
CCD #4 12/17/08

Date 09-26-2008
Scale AS INDICATED
Drawn By JL
Job No. 4034

FIFTH FLOOR
PLAN - NORTH
SYSTEMS

E4
15