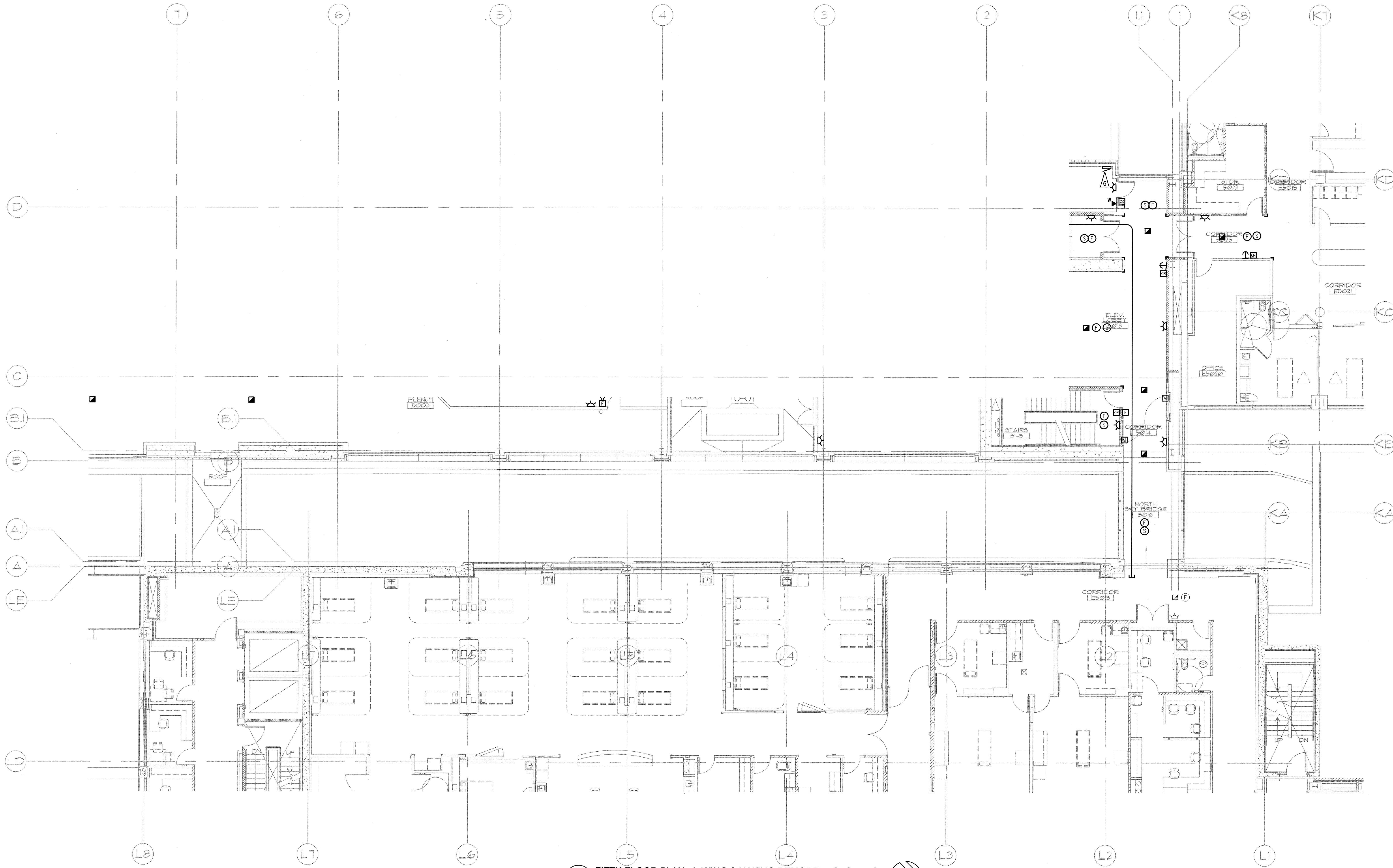
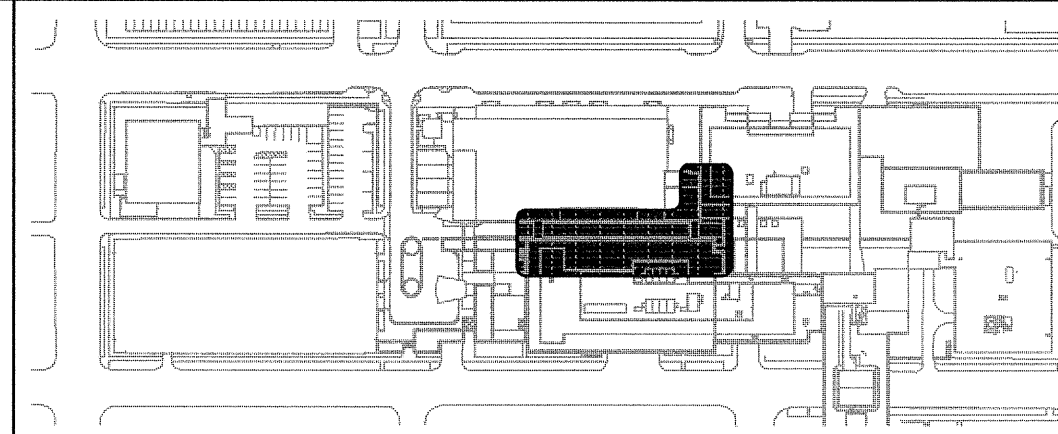
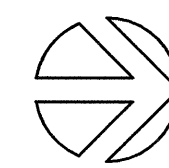


N:\B13608\CADD-05\M4-L4-35.DWG SEP 25, 2008 -- 11:35:33 AM BY: TWITE

A
B
C
D
E



1 FIFTH FLOOR PLAN - L-WING & K-WING REMODEL - SYSTEMS
E4.35
SCALE: AS INDICATED
0 4 8 16 24
as indicated feet



GENERAL NOTES

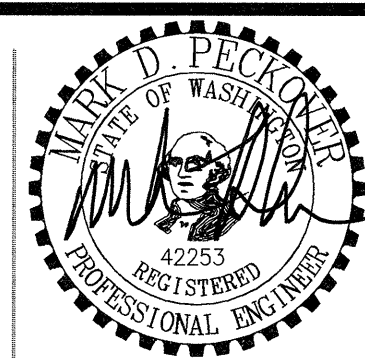
1. SEE ARCHITECTURAL PLANS, SECTIONS AND ELEVATIONS FOR EXACT EQUIPMENT AND DEVICE LOCATIONS.
2. SEE ARCHITECTURAL PLANS FOR LOCATIONS OF SOUND, SMOKE AND FIRE RATED WALLS.
3. REFER TO MECHANICAL DRAWINGS FOR FIRE/SMOKE DAMPER LOCATIONS. PROVIDE FIRE ALARM MONITORING POINT FOR EACH FIRE/SMOKE DAMPER.
4. CONTRACTOR SHALL OBTAIN THE FINAL OWNER APPROVED HILLROM NURSE CALL SHOP DRAWINGS PRIOR TO ROUGH-IN.

FLAG NOTES

NOTE

SPARLING
ELECTRICAL ENGINEERING | TECHNOLOGY CONSULTING

GIFFIN • BOLTE • JURGENS
ARCHITECTS
815 S.W. SECOND AVENUE • PORTLAND, OREGON 97204
(503) 233-0992 www.gbja.com FAX (503) 294-3961



MultiCare
EMERGENCY DEPARTMENT & CANCER CENTER EXPANSION
TACOMA, WASHINGTON

Date 09-26-2008
Scale AS INDICATED
Drawn By JL
Job No. 4034

FIFTH FLOOR
PLAN - L-WING &
K-WING REMODEL -
SYSTEMS

E4
35