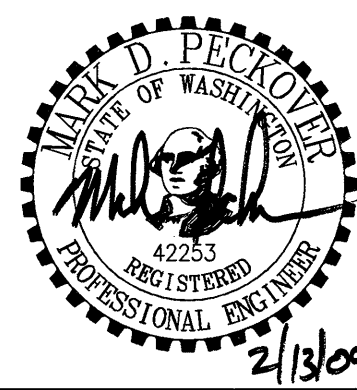


GIFFIN • BOLTE • JURGENS
ARCHITECTS

815 S.W. SECOND AVENUE, PORTLAND, OREGON 97204
(503) 223-0992 www.gbjarch.com FAX (503) 294-3961



EMERGENCY DEPARTMENT & CANCER CENTER EXPANSION

MultiCare

TACOMA, WASHINGTON

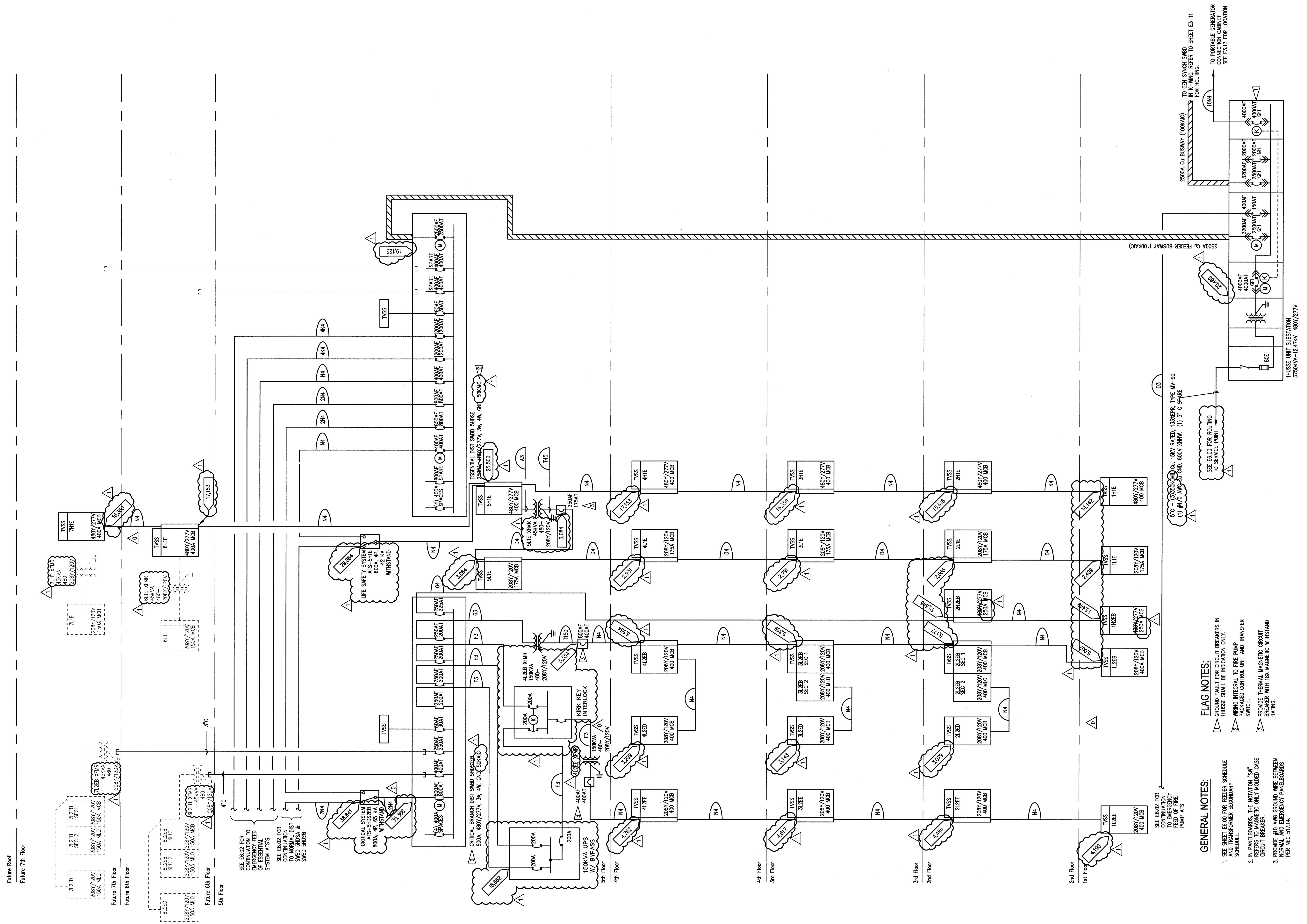
ONE-LINE / RISER DIAGRAM - EMERGENCY
SCALE: NONE

100% CD SET 9/26/08
CCD #7 2/20/09

Date 09-26-2008
Scale NONE
Drawn By JL
Job No. 4034

ONE-LINE
RISER DIAGRAM
EMERGENCY

E6
03



FLAG NOTES:
1. GROUND FAULT FOR CIRCUIT BREAKERS IN THIS SHEET SHALL BE INDICATED ONLY.
2. WIRING INTEGRAL TO FIRE PUMP PACKAGED CONTROL UNIT AND TRANSFER SWITCH.
3. PROVIDE THERMAL MAGNETIC CIRCUIT BREAKER WITH 18K MAGNETIC WITHSTAND RATING.

GENERAL NOTES:
1. SEE SHEET E6.01 FOR FEEDER SCHEDULE AND TRANSFORMER SCHEDULE.
2. IN PANELBOARDS, THE NOTATION "SW" REFERS TO MAGNETIC ONLY MOLDED CASE CIRCUIT BREAKER.
3. PROVIDE #10 AWG GROUND WIRE BETWEEN NORMAL AND EMERGENCY PANELBOARDS PER NEC 517.14.