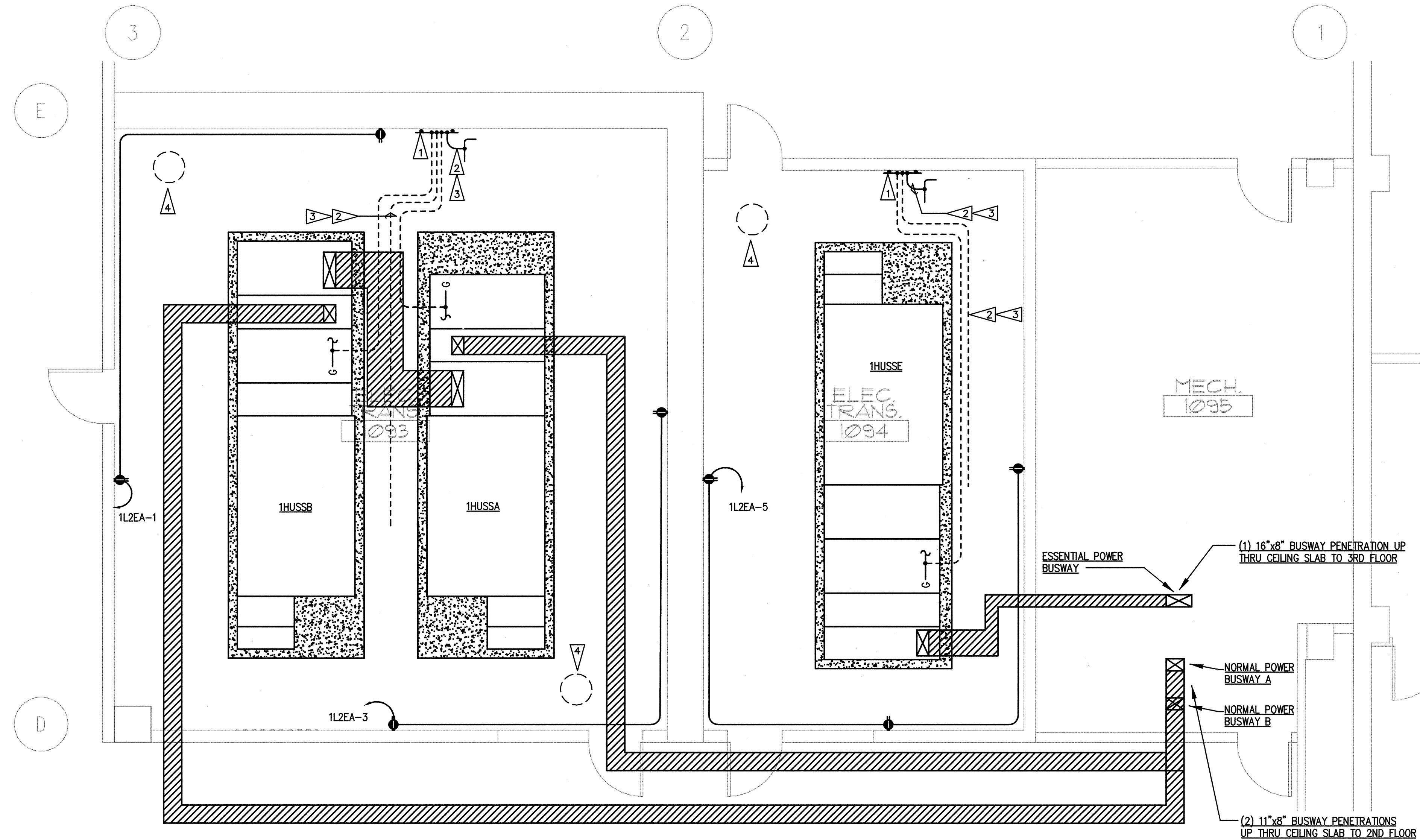
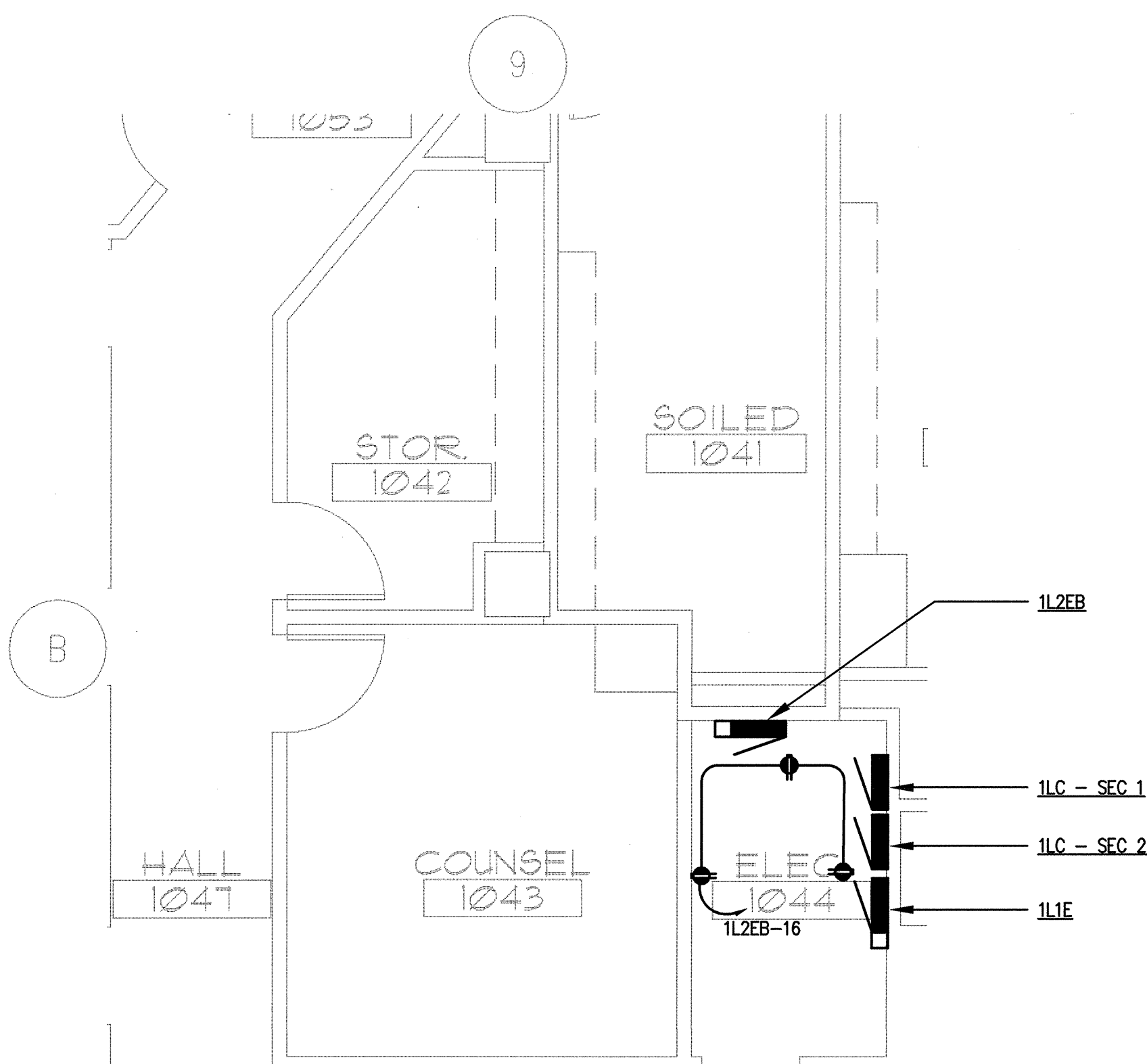


1 FIRST FLOOR ELECTRICAL ROOM - K WING USS  
E7.00 SCALE: AS INDICATED  
0 1 2 4 8 12  
as indicated feet



2 FIRST FLOOR ELECTRICAL ROOM - NORMAL/EMERGENCY USS  
E7.00 SCALE: AS INDICATED  
0 1 2 4 8 12  
as indicated feet



3 FIRST FLOOR ELECTRICAL ROOM - SOUTH  
E7.00 SCALE: AS INDICATED  
0 1 2 4 8 12  
as indicated feet

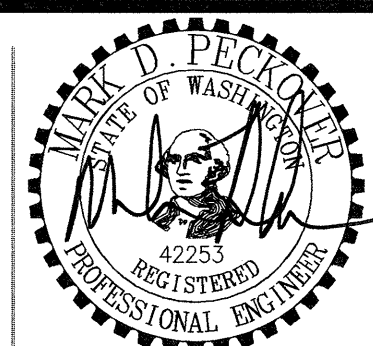
FLAG NOTES

- 1 GROUND BUS BAR AND GROUNDING ELECTRODE SYSTEM CONNECTIONS. SEE DETAIL 7/EB.02.
- 2 EQUIPMENT INCLUDED IN FOUNDATION PACKAGE. SEE THE FOUNDATION PACKAGE DRAWINGS FOR FURTHER INFORMATION.
- 3 CONNECT TO GROUND BUS BAR AS SHOWN.
- 4 GROUND WELL LOCATION. SEE DETAIL 8/EB.01.

SPARLING  
ELECTRICAL ENGINEERING | TECHNOLOGY CONSULTING

GIFFIN • BOLTE • JURGENS, P.C.  
ARCHITECTS

815 S.W. SECOND AVENUE • PORTLAND, OREGON 97204  
(503) 223-0952 • www.gbjarch.com • FAX (503) 294-3961



MultiCare

EMERGENCY DEPARTMENT & CANCER CENTER EXPANSION

TACOMA, WASHINGTON

Date 09-26-2008  
Scale AS INDICATED  
Drawn By JL  
Job No. 4034

ENLARGED PLANS  
ELECTRICAL

E7  
00