

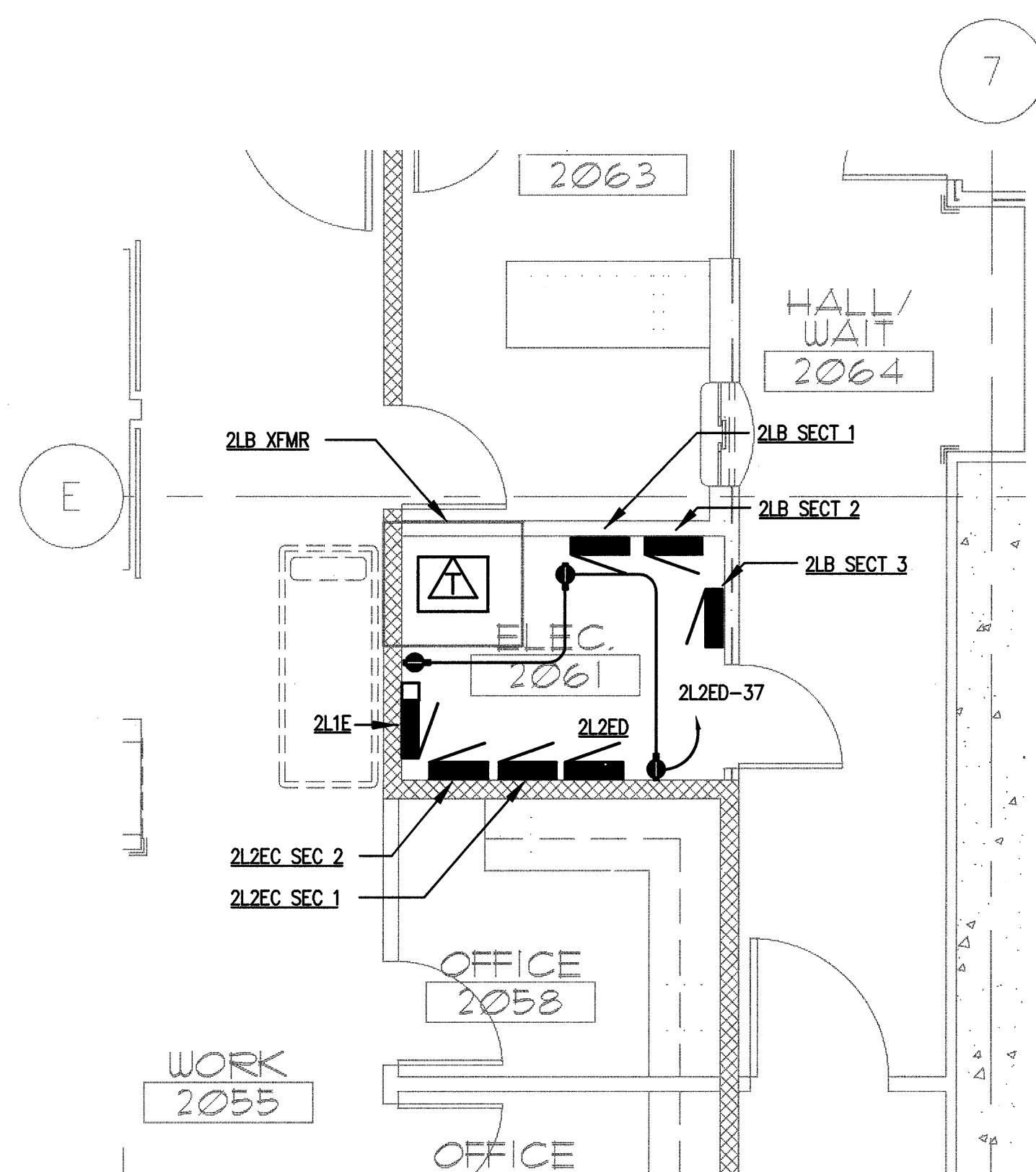
A

B

C

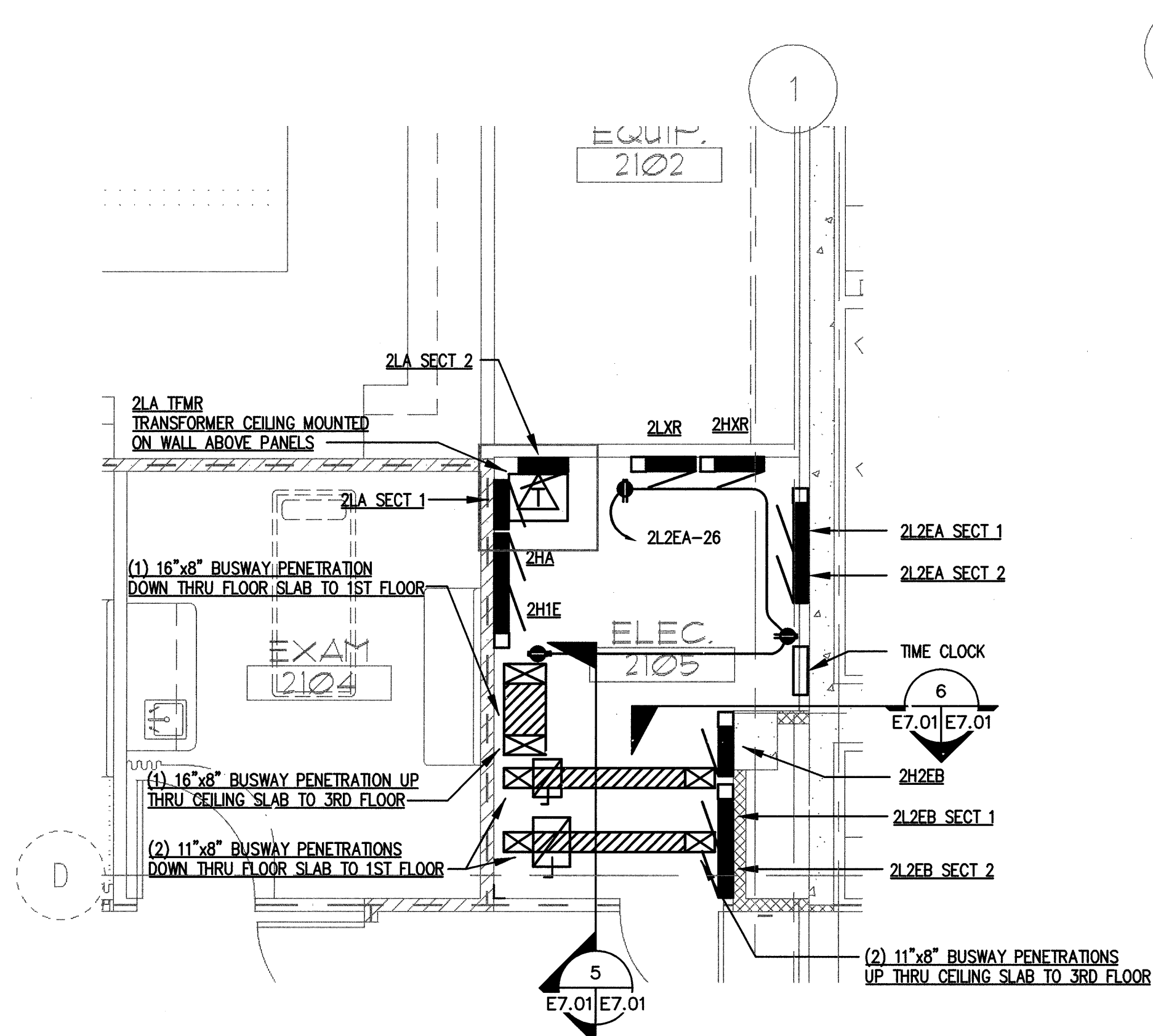
D

N:\B13608\CADD-08\Vol.17-01.DWG FEB 13, 2009 - 11:25:48 AM BY: TWHITE



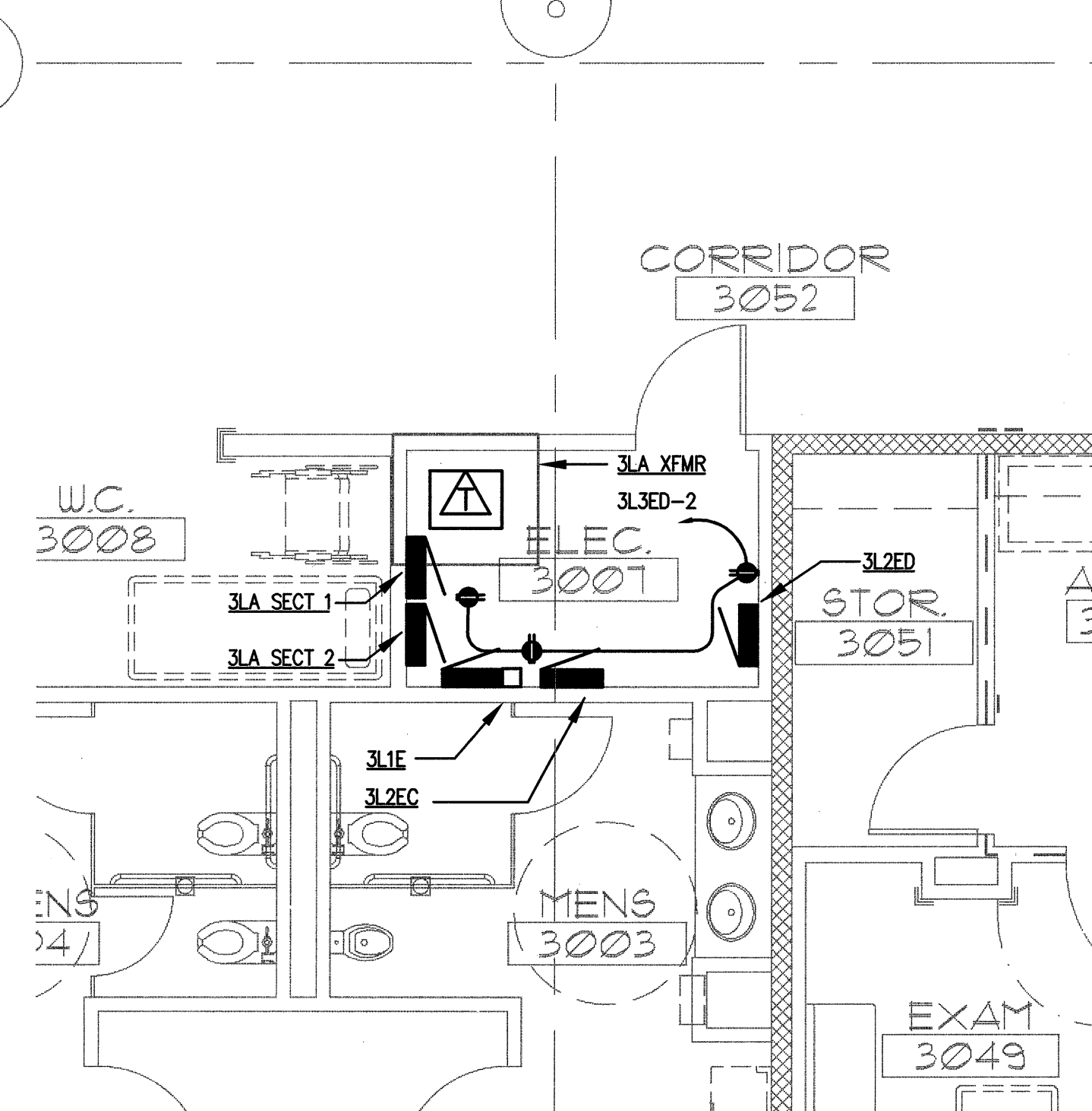
1 SECOND FLOOR ELECTRICAL ROOM - SOUTH

E7.01 SCALE: AS INDICATED



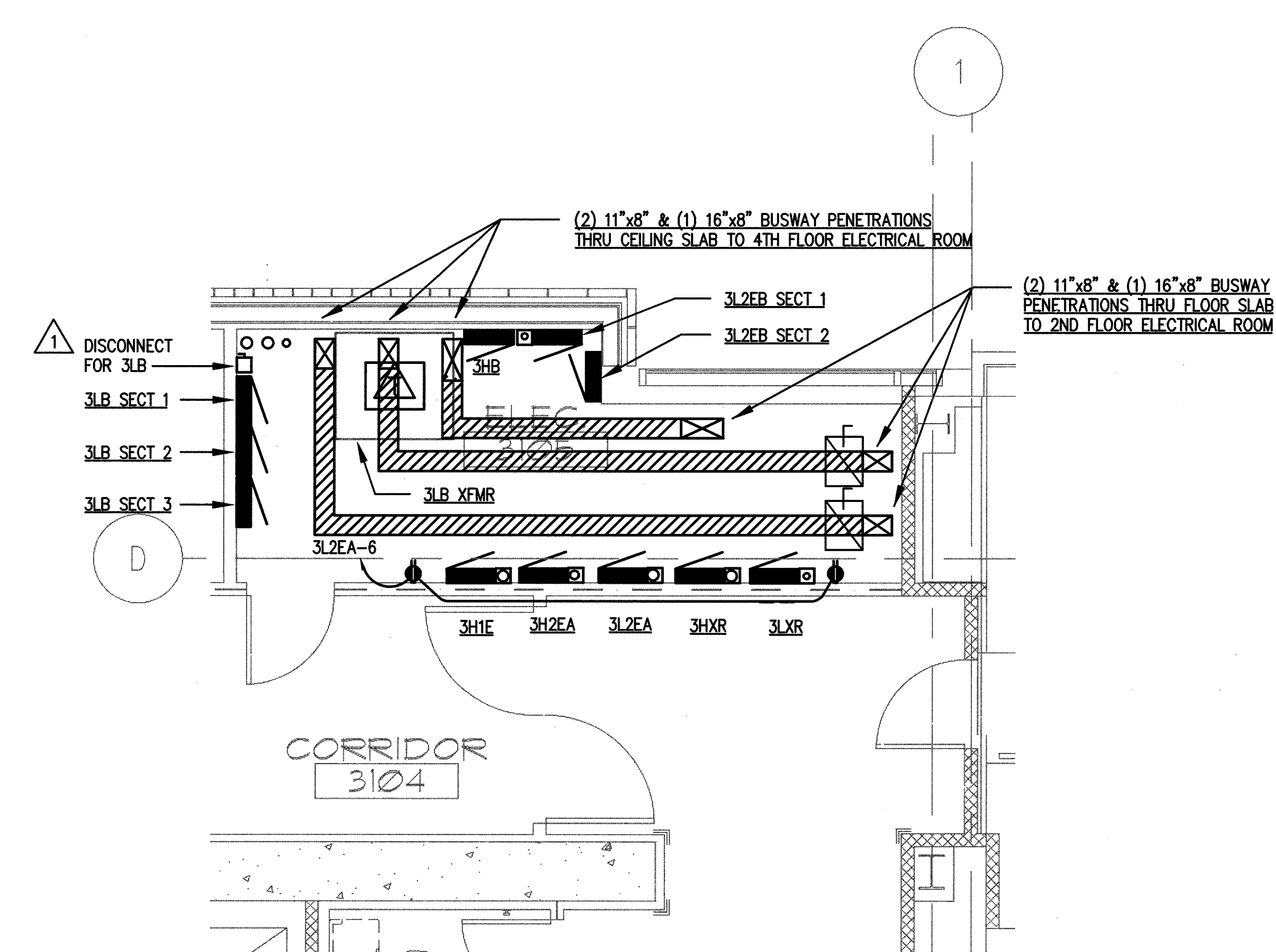
2 SECOND FLOOR ELECTRICAL ROOM - NORTH

E7.01 SCALE: AS INDICATED



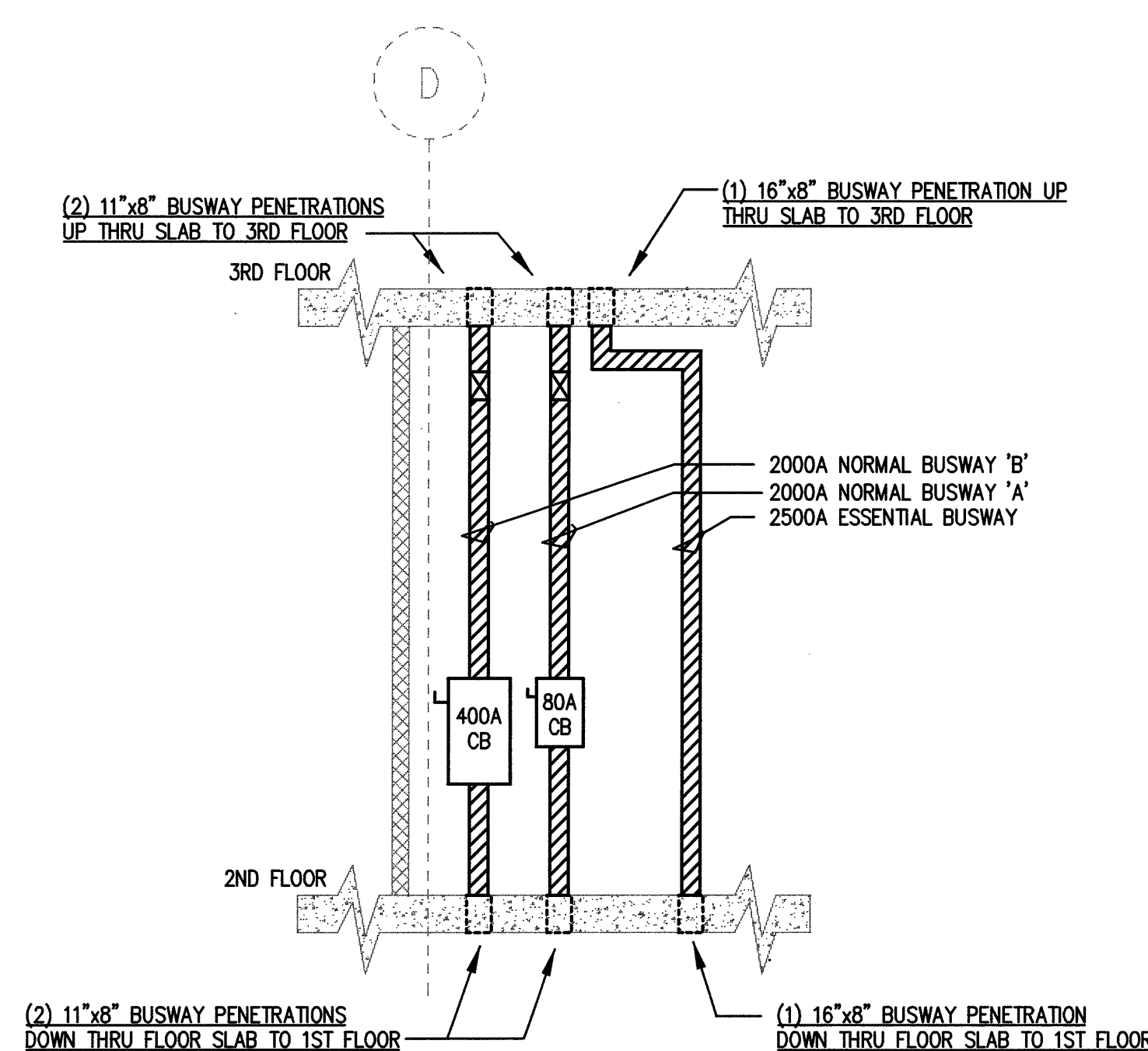
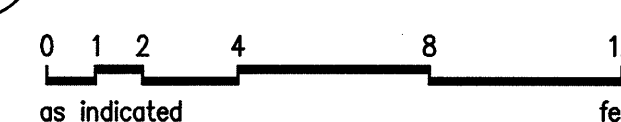
3 THIRD FLOOR ELECTRICAL ROOM - SOUTH

E7.01 SCALE: AS INDICATED



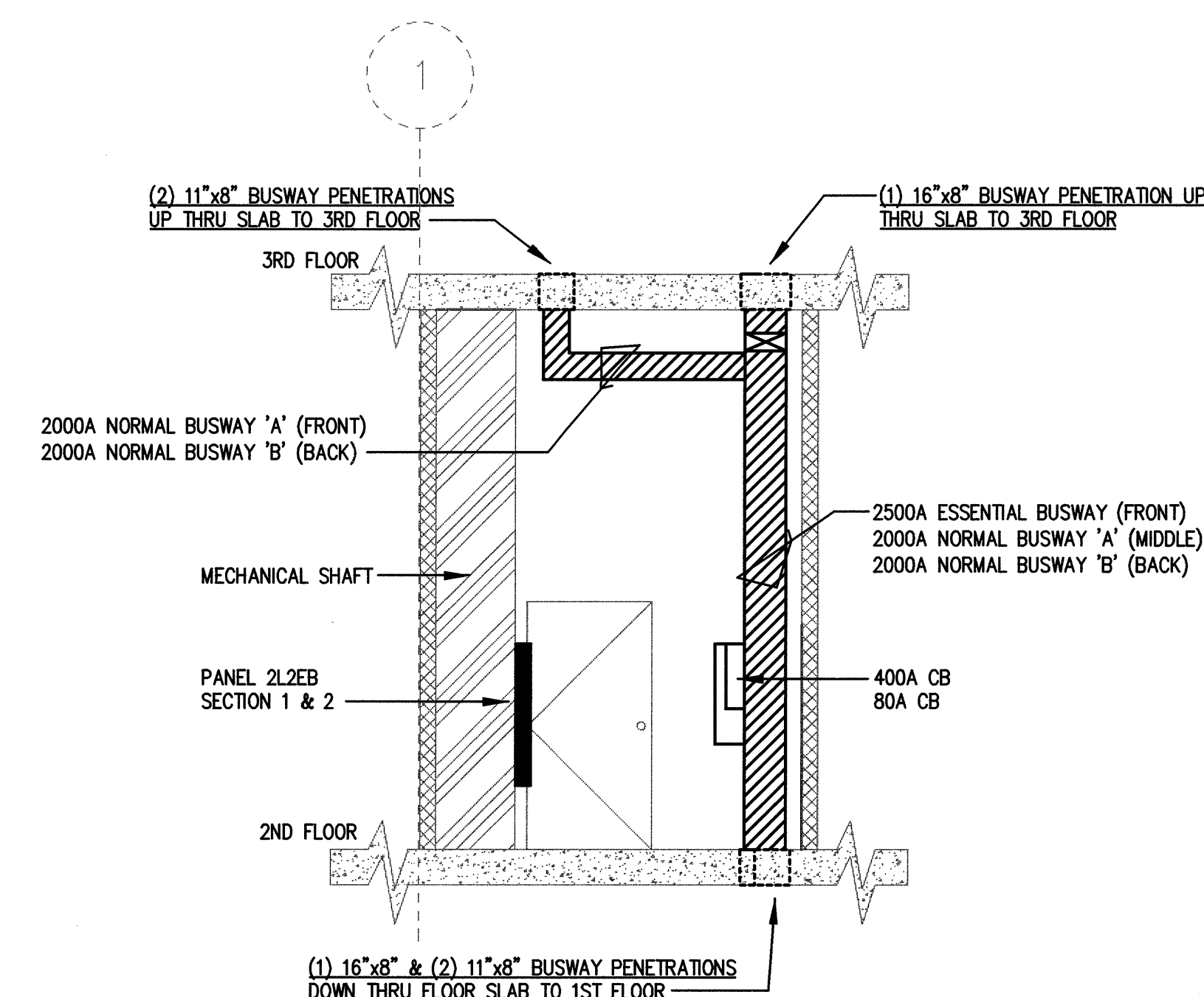
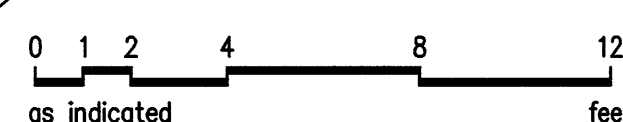
4 THIRD FLOOR ELECTRICAL ROOM - NORTH

E7.01 SCALE: AS INDICATED



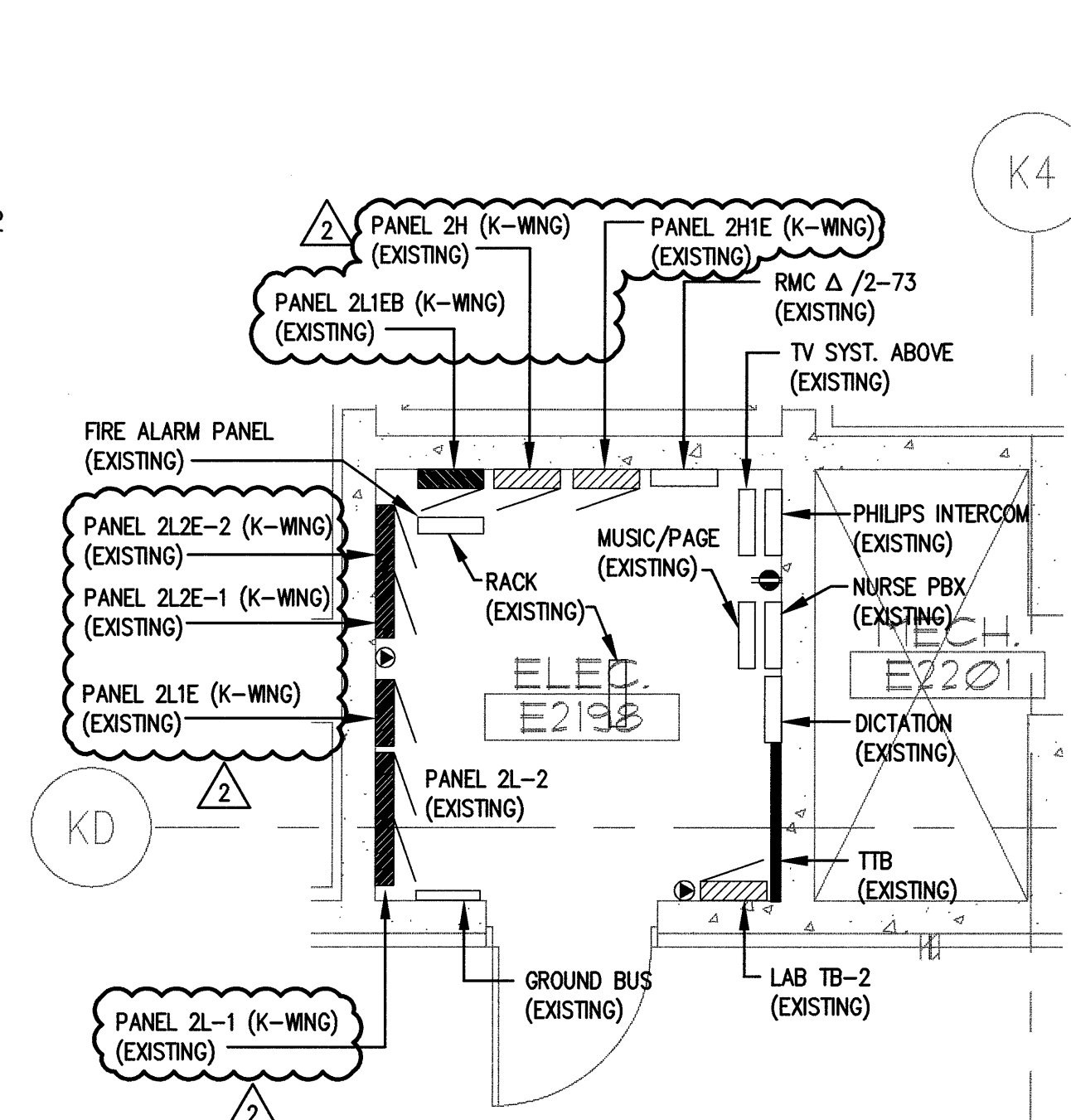
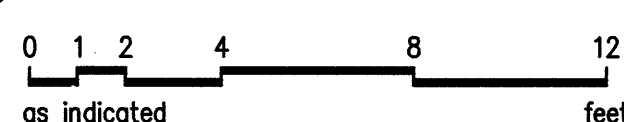
5 SECOND FLOOR ELECTRICAL ROOM PARTIAL ELEVATION - SOUTH

E7.01 SCALE: AS INDICATED



6 SECOND FLOOR ELECTRICAL ROOM PARTIAL ELEVATION - EAST

E7.01 SCALE: AS INDICATED



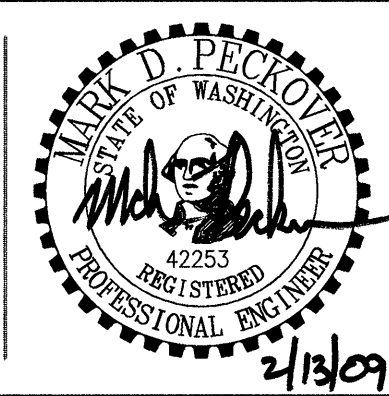
7 SECOND FLOOR ELECTRICAL ROOM - K-WING

E7.01 SCALE: AS INDICATED



GIFFIN • BOLTE • JURGENS
ARCHITECTS

815 S.W. SECOND AVENUE • PORTLAND, OREGON 97204
(503) 223-0992 www.gbjarch.com FAX (503) 294-3961



MultiCare
EMERGENCY DEPARTMENT & CANCER CENTER EXPANSION

TACOMA, WASHINGTON

100% CD SET 9/26/08
CCD #4 12/17/08
CCD #7 2/20/09

Date 09-26-2008
Scale AS INDICATED
Drawn By JL
Job No. 4034

ENLARGED PLANS
ELECTRICAL

E7
01