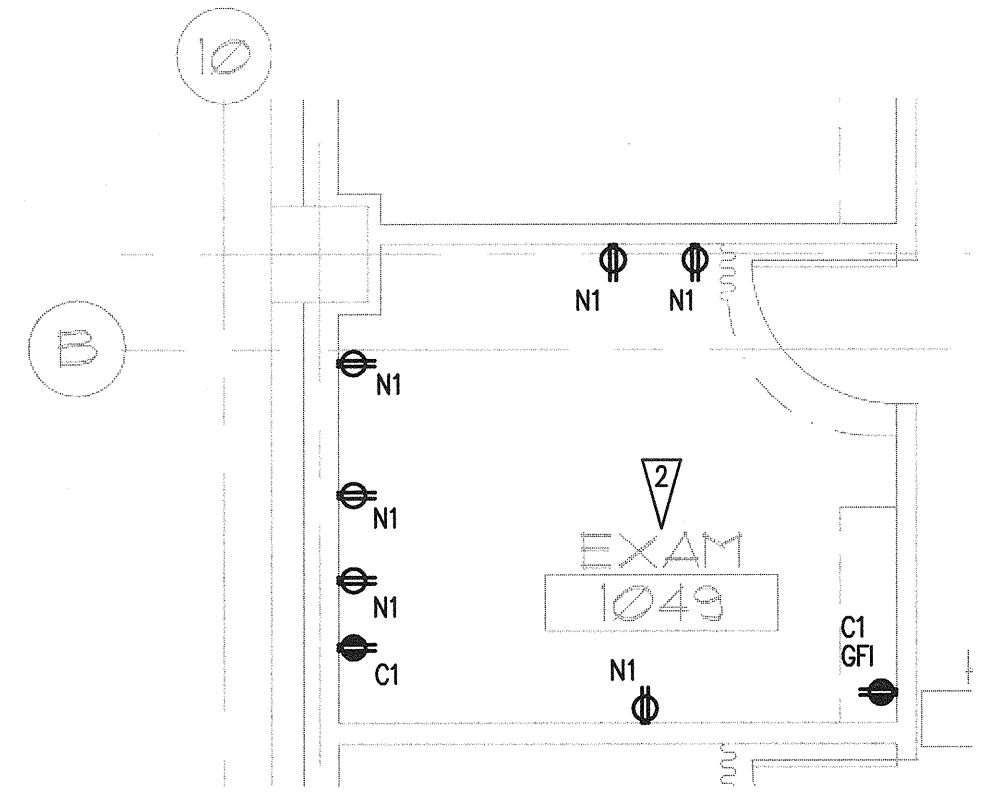
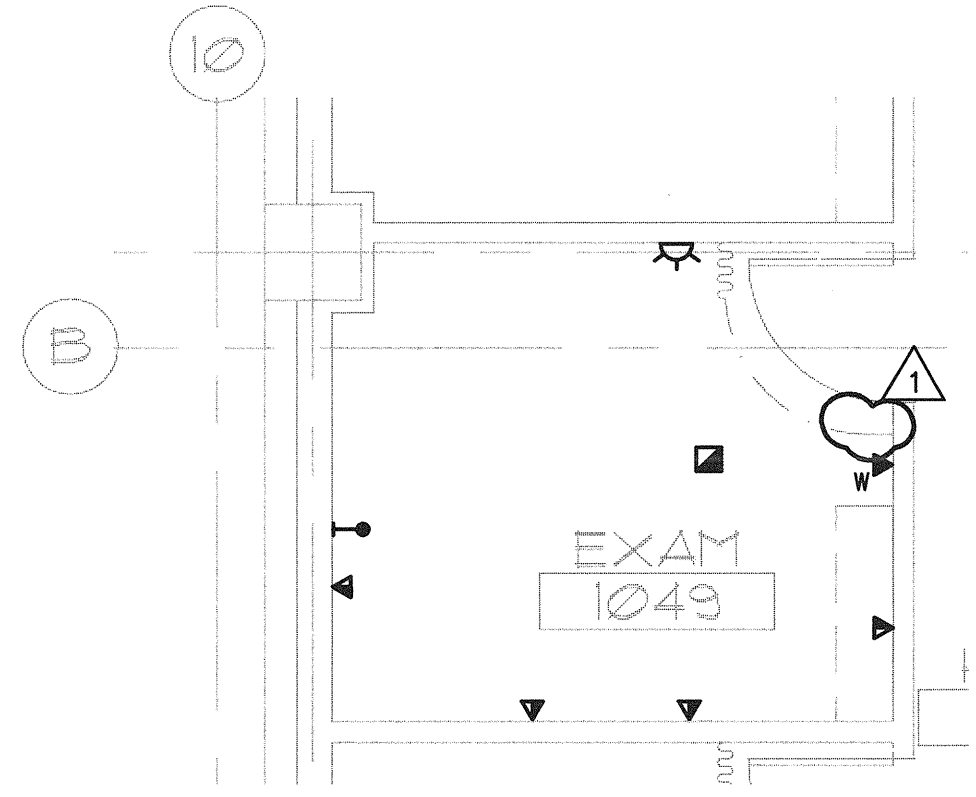


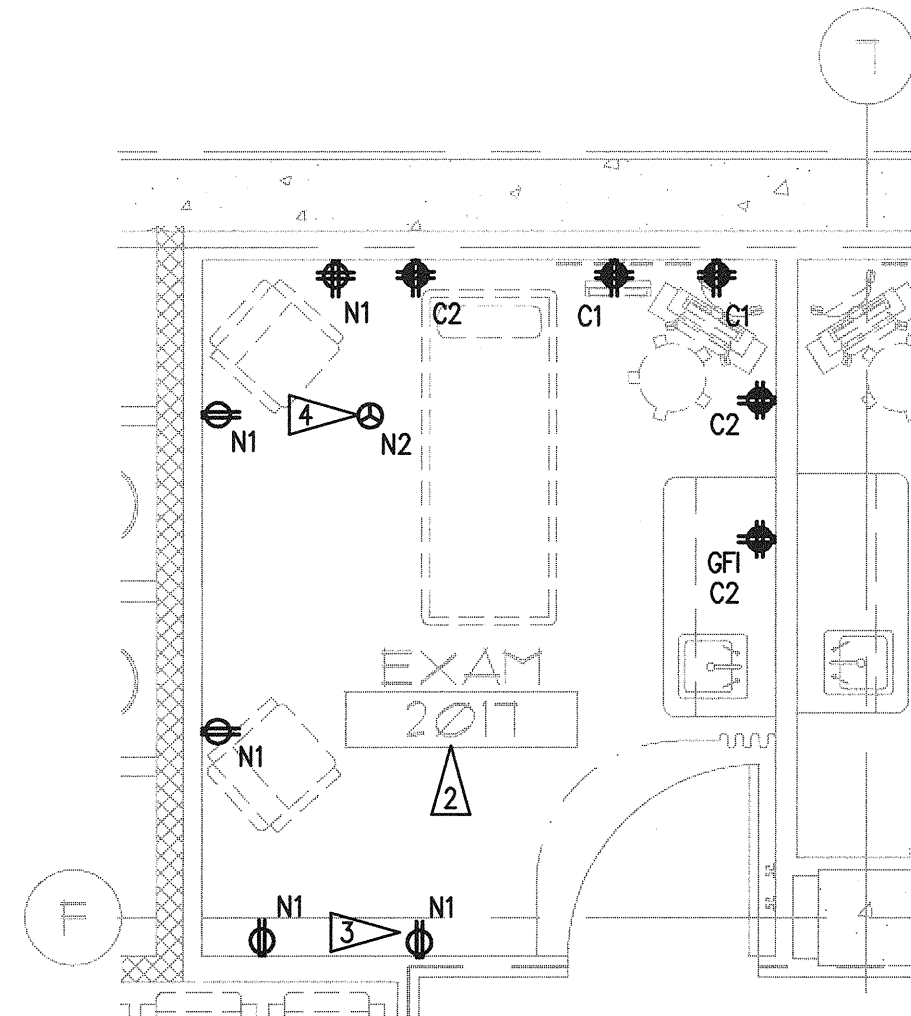
N:\B13608\CAD-05\703.E7-10.DWG DEC 18, 2008 - 11:40:39 AM BY: JLUO



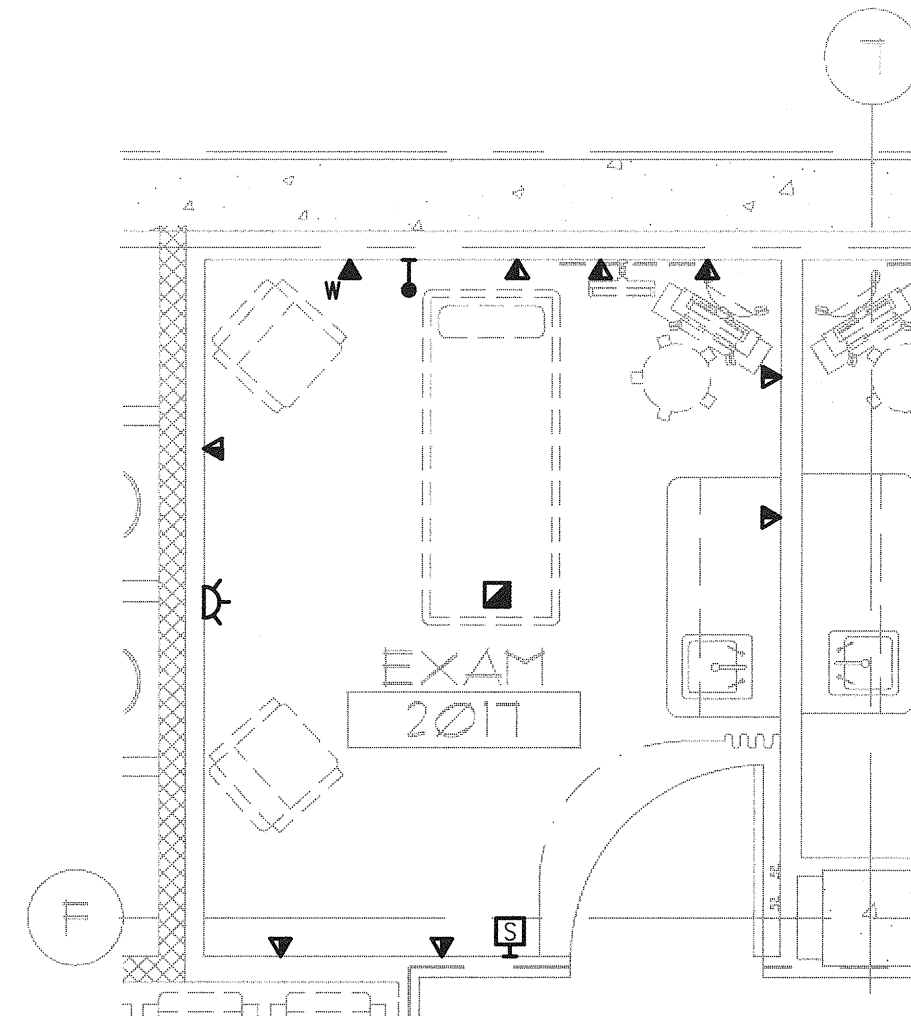
1 1ST FL TYPICAL EXAM RM ENLARGED PLAN - POWER
E7.10 SCALE: AS INDICATED
0 1 2 4 8 12
as indicated feet



2 1ST FL TYPICAL EXAM RM ENLARGED PLAN - SYSTEMS
E7.10 SCALE: AS INDICATED
0 1 2 4 8 12
as indicated feet



3 2ND FL TYPICAL EXAM RM ENLARGED PLAN - POWER
E7.10 SCALE: AS INDICATED
0 1 2 4 8 12
as indicated feet



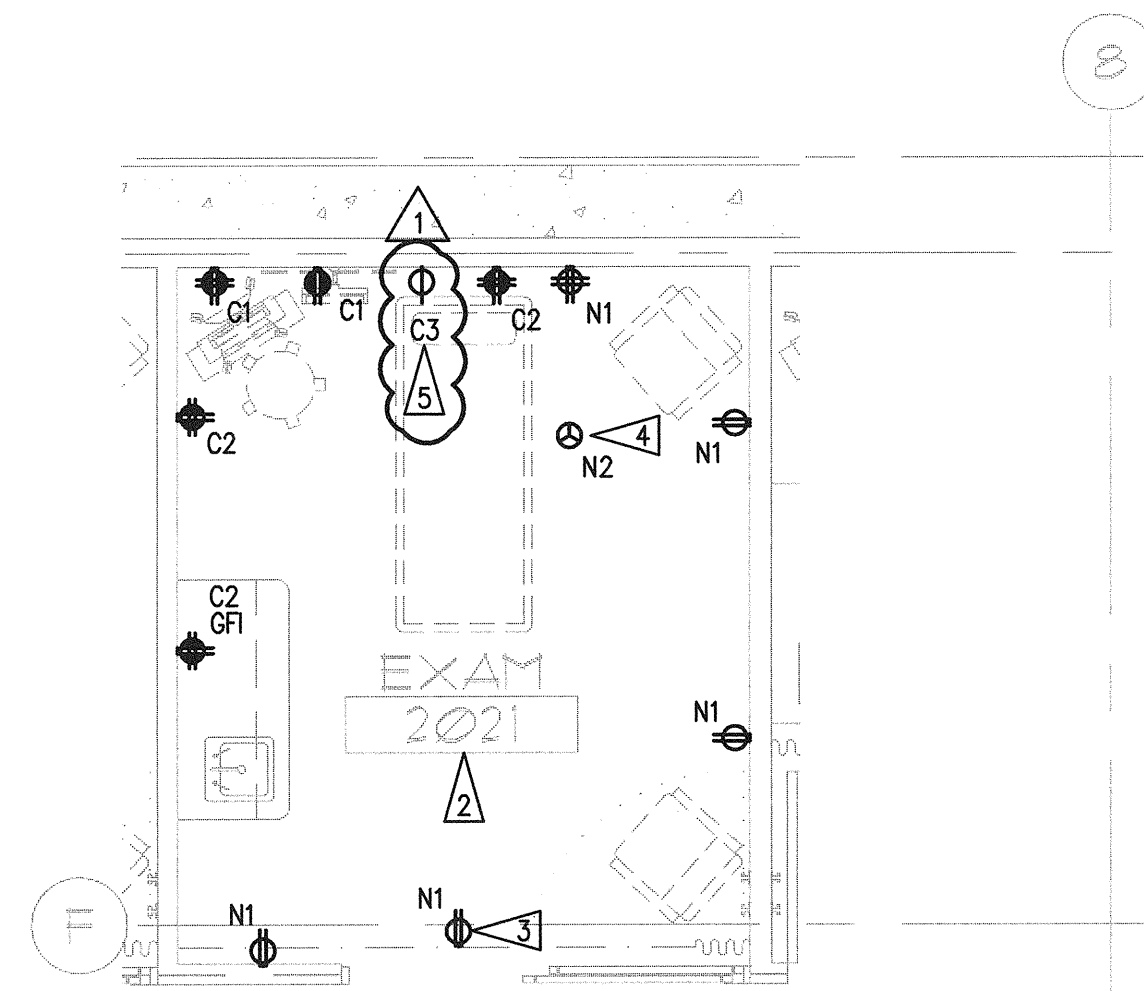
4 2ND FL TYPICAL EXAM RM ENLARGED PLAN - SYSTEMS
E7.10 SCALE: AS INDICATED
0 1 2 4 8 12
as indicated feet

GENERAL NOTES

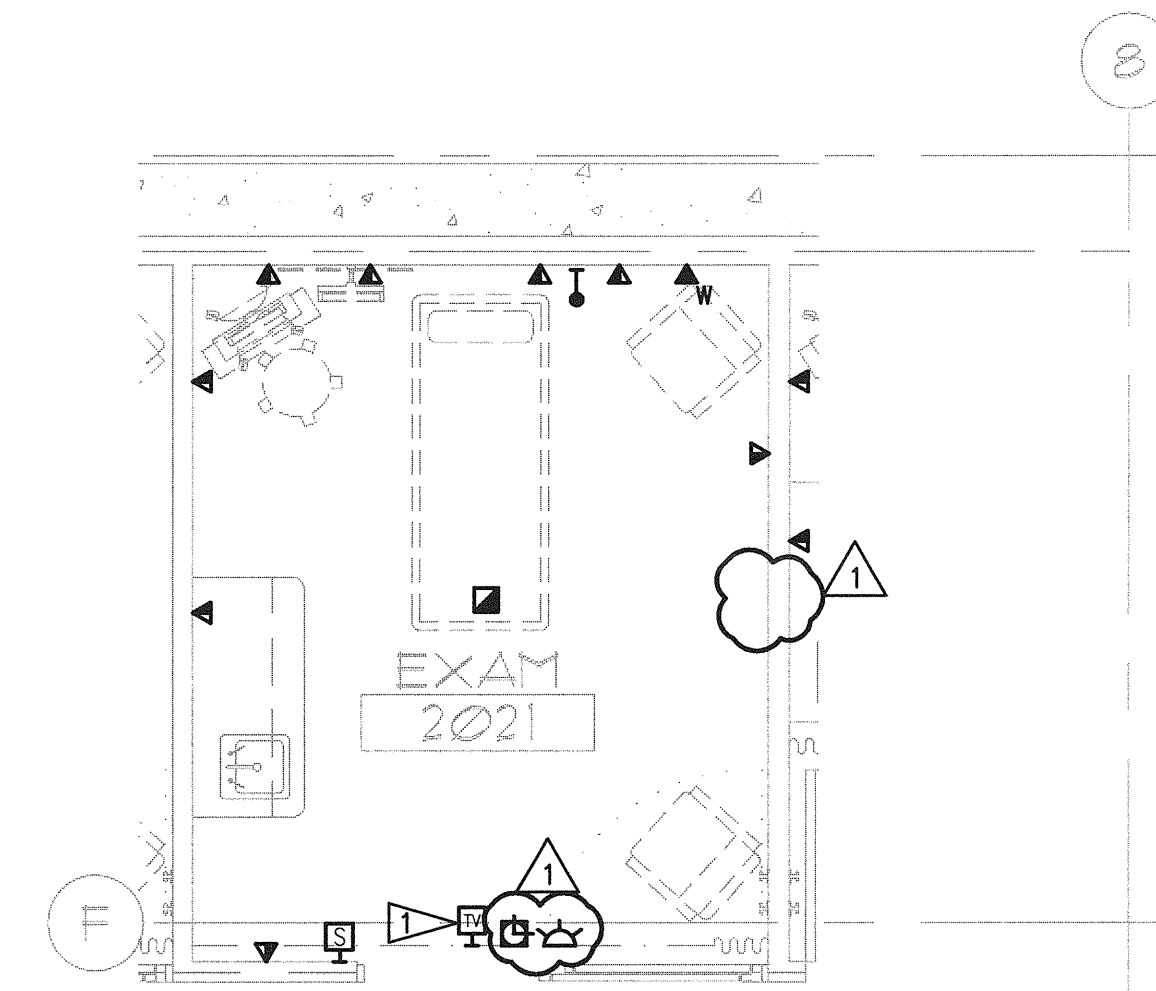
1. SEE ARCHITECTURAL PLANS, SECTIONS AND ELEVATIONS FOR EXACT EQUIPMENT AND DEVICE LOCATIONS, INCLUDING MOUNTING HEIGHTS.
2. PROVIDE RED DEVICES AND COVERPLATES FOR DEVICES SERVED FROM EMERGENCY POWER SYSTEM.
3. ABOVE COUNTER RECEPTACLES LOCATED WITHIN 5' OF SINK SHALL BE GFI RATED.
4. REFER TO SHEETS E301, E311, E302, E312 & E322 FOR REFERENCES TO TYPICAL EXAM ROOMS POWER PLANS.
5. REFER TO SHEETS E401, E411, E402, E412 & E422 FOR REFERENCES TO TYPICAL EXAM ROOMS SYSTEMS PLANS.

FLAG NOTES

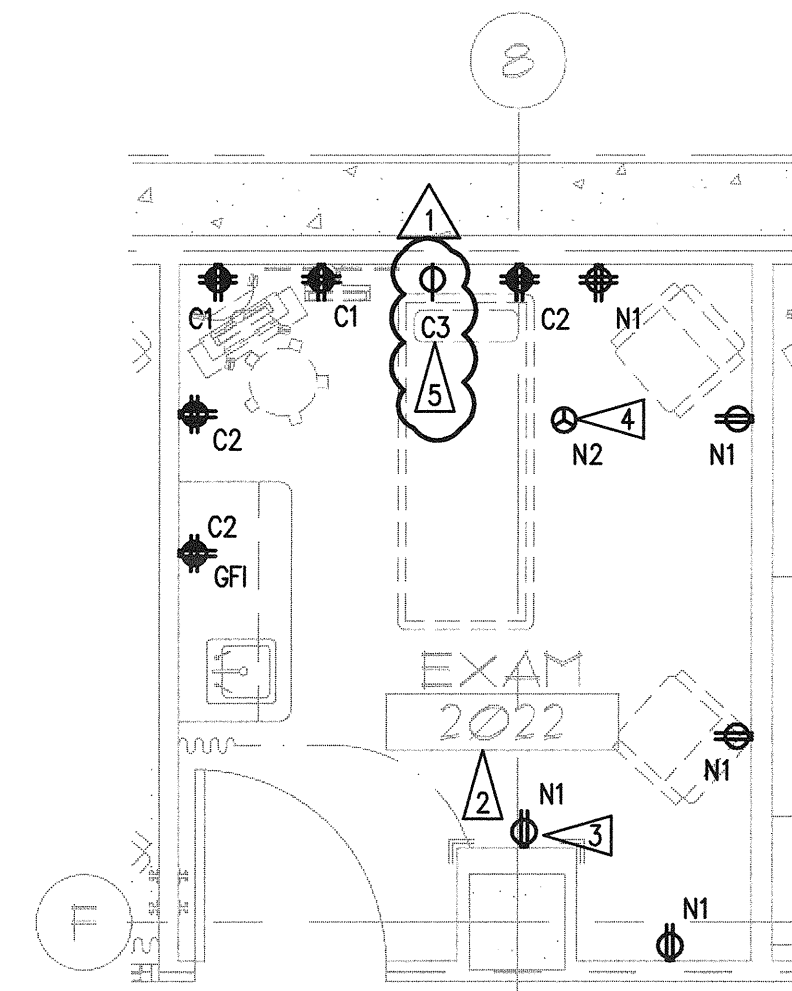
1. MOUNT TELEVISION DATA J-BOX TO FACE OF SOFFIT.
2. ALL RECEPTACLES THIS ROOM SHALL BE LISTED AS "SAFETY" TYPE RECEPTACLES.
3. LOCATE RECEPTACLE ADJACENT TO TELEVISION OUTLET.
4. PROVIDE HARD-WIRED CONNECTION TO BARIATRIC-LIFT CONTROLS LOCATED IN CEILING SPACE.
5. DATA-CAPTOR CONNECTION. PROVIDE SIMPLEX RECEPTACLE LOCATED ABOVE HEADWALL. COORDINATE EXACT LOCATION WITH ARCHITECTURAL INTERIOR ELEVATIONS, OWNER AND MANUFACTURER PRIOR TO ROUGH-IN. THIS CONNECTION ONLY OCCURS IN THE FOLLOWING EXAM ROOMS: 2088, 2091, 2092, 2093.



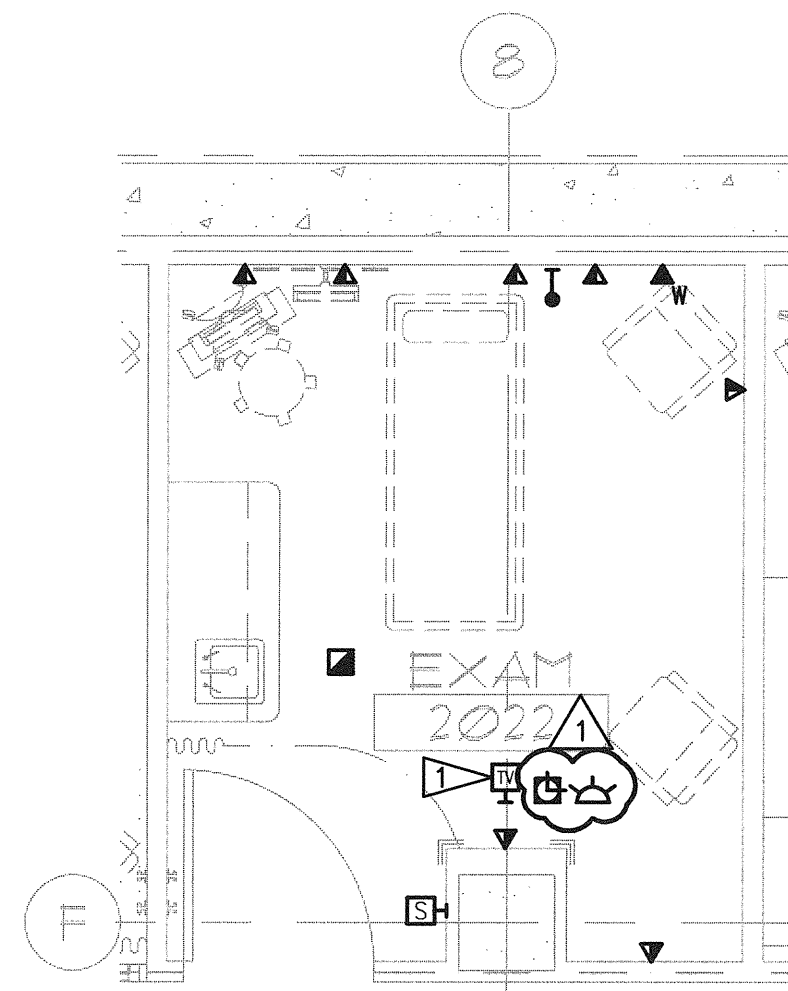
5 2ND FL TYPICAL EXAM RM ENLARGED PLAN - POWER
E7.10 SCALE: AS INDICATED
0 1 2 4 8 12
as indicated feet



6 2ND FL TYPICAL EXAM RM ENLARGED PLAN - SYSTEMS
E7.10 SCALE: AS INDICATED
0 1 2 4 8 12
as indicated feet



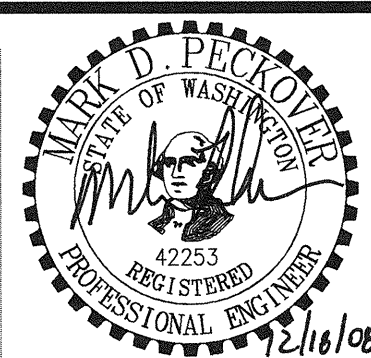
7 2ND FL TYPICAL EXAM RM ENLARGED PLAN - POWER
E7.10 SCALE: AS INDICATED
0 1 2 4 8 12
as indicated feet



8 2ND FL TYPICAL EXAM RM ENLARGED PLAN - SYSTEMS
E7.10 SCALE: AS INDICATED
0 1 2 4 8 12
as indicated feet

GIFFIN • BOLTE • JURGENS p.c.
A R C H I T E C T S

815 S.W. SECOND AVENUE • PORTLAND, OREGON 97204
(503) 223-0992 www.gbjaarch.com FAX (503) 294-3961



MultiCare
EMERGENCY DEPARTMENT & CANCER CENTER EXPANSION

TACOMA, WASHINGTON

100% CD SET 9/26/08
CCD #4 12/17/08

Date 09-26-2008
Scale AS INDICATED
Drawn By TSW
Job No. 4034

ENLARGED PLANS
ELECTRICAL

E7
10