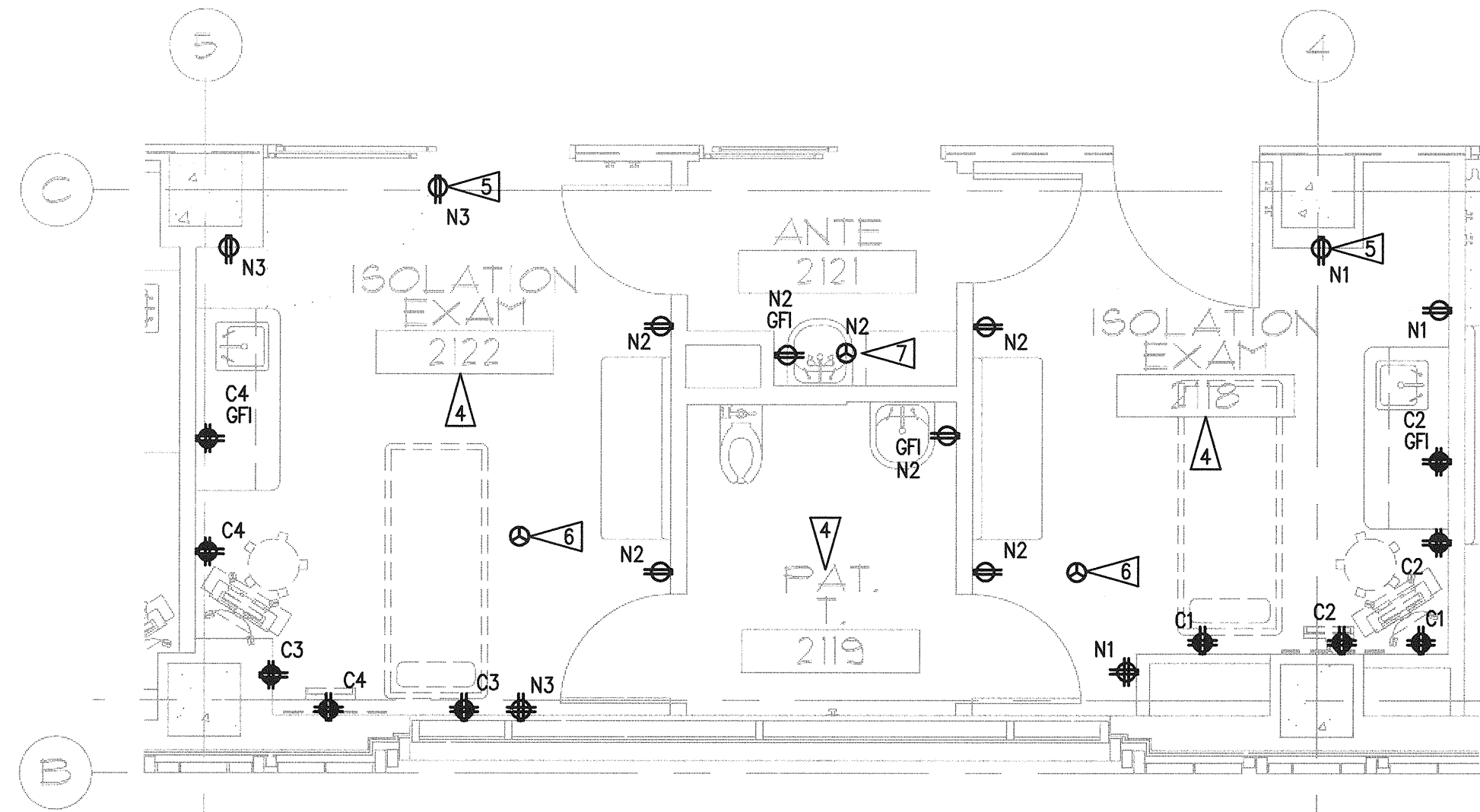
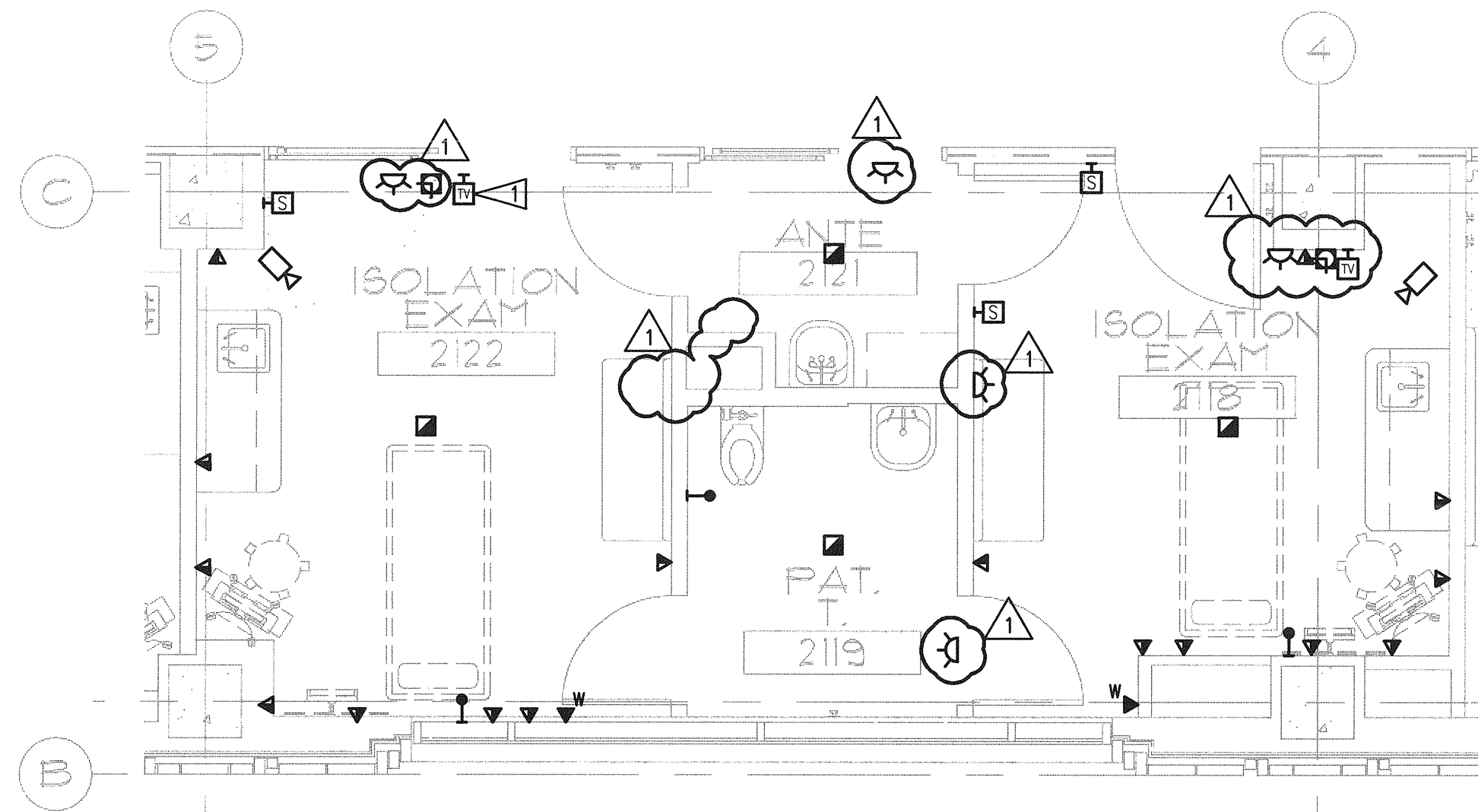


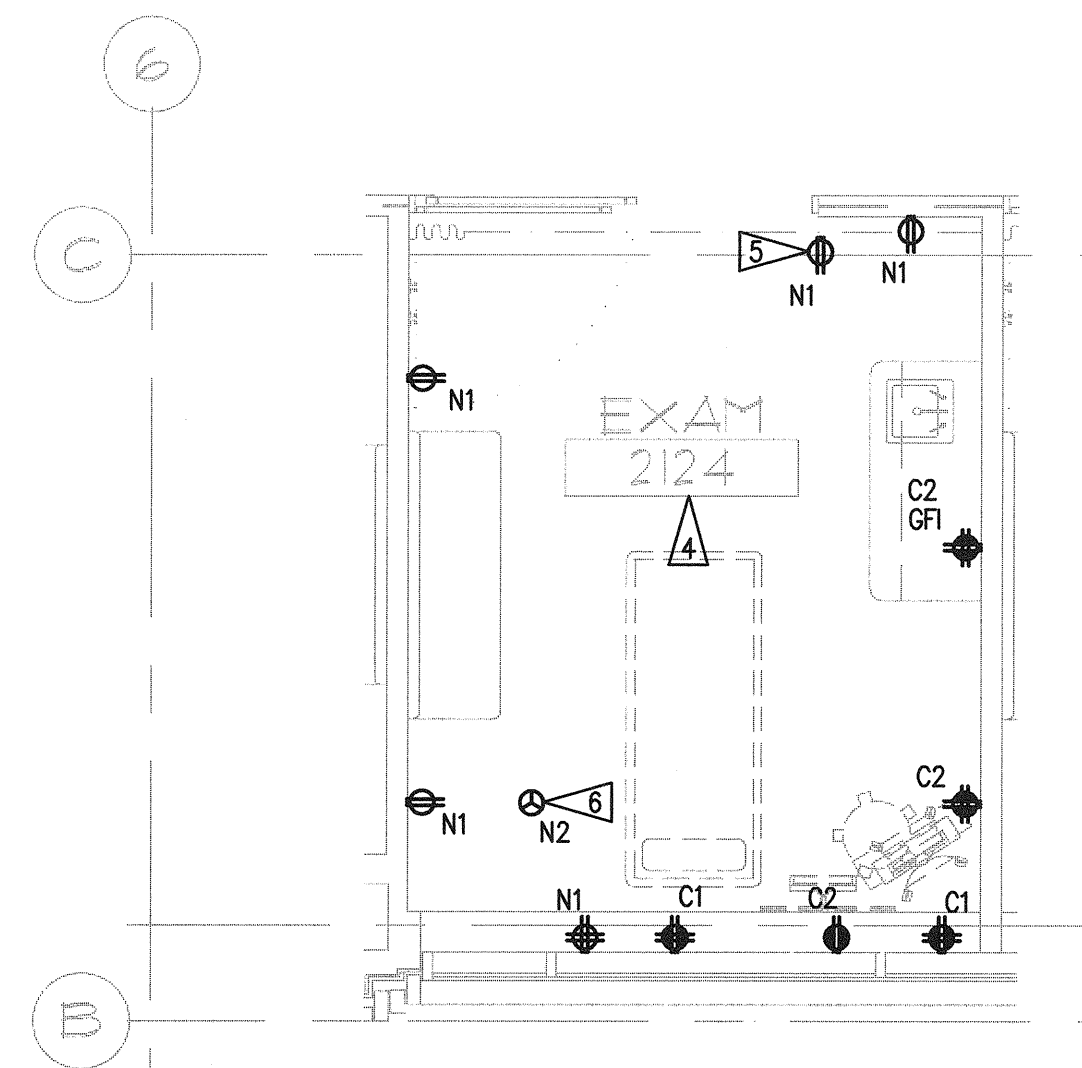
N:\013606\CAUD-05\05.E7-12.DWG DEC 18, 2008 11:40:19 AM BY: JLD



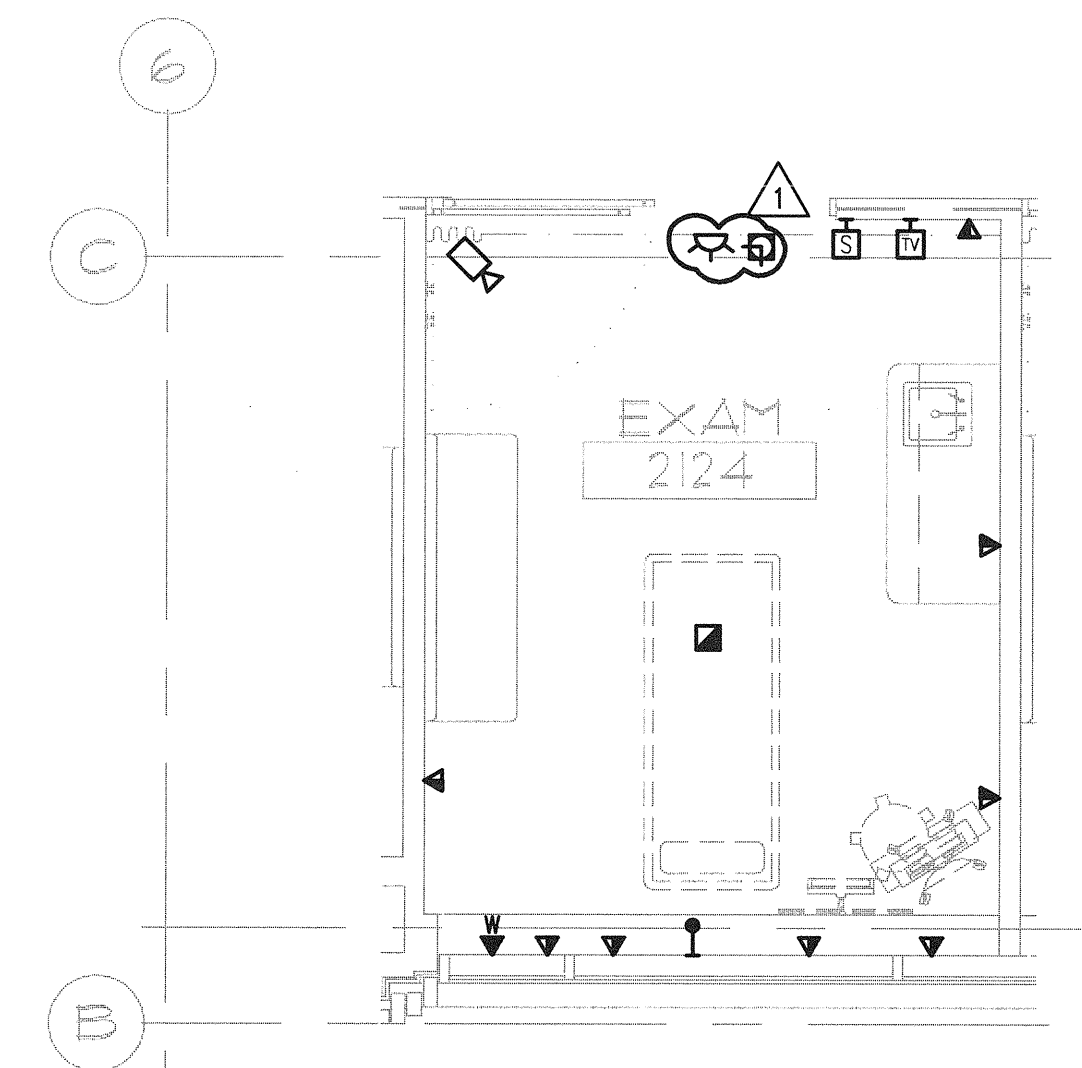
1 2ND FL TYPICAL ISOLATION RM ENLARGED PLAN - POWER
E7.12 SCALE: AS INDICATED
0 1 2 4 8 12
as indicated feet



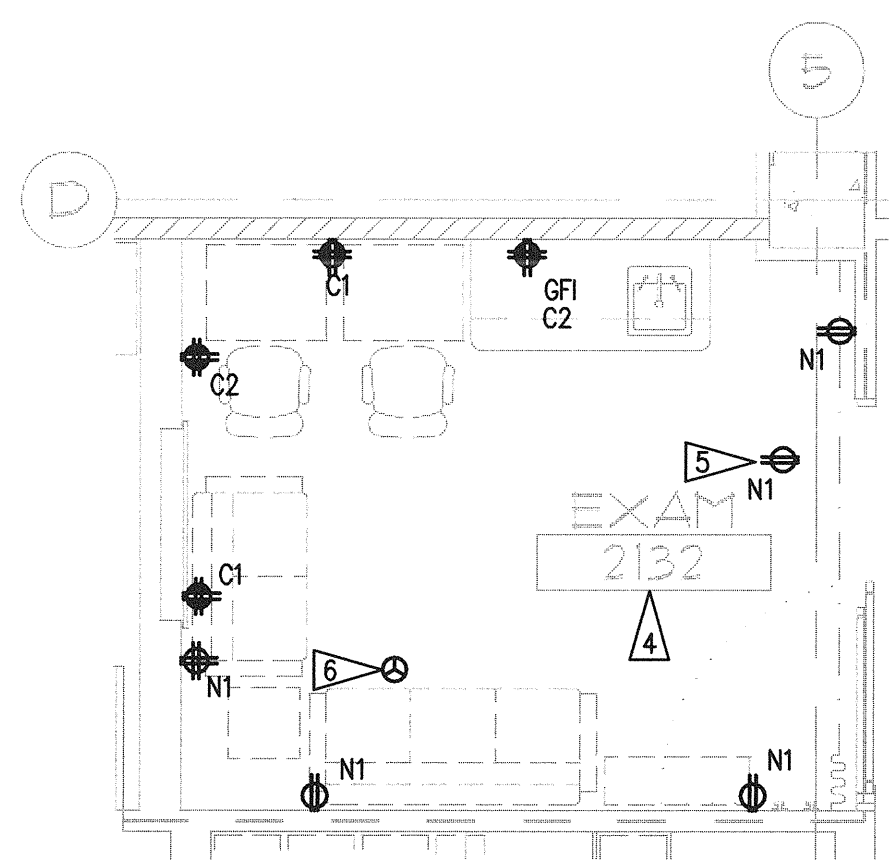
2 2ND FL TYPICAL ISOLATION RM ENLARGED PLAN - SYSTEMS
E7.12 SCALE: AS INDICATED
0 1 2 4 8 12
as indicated feet



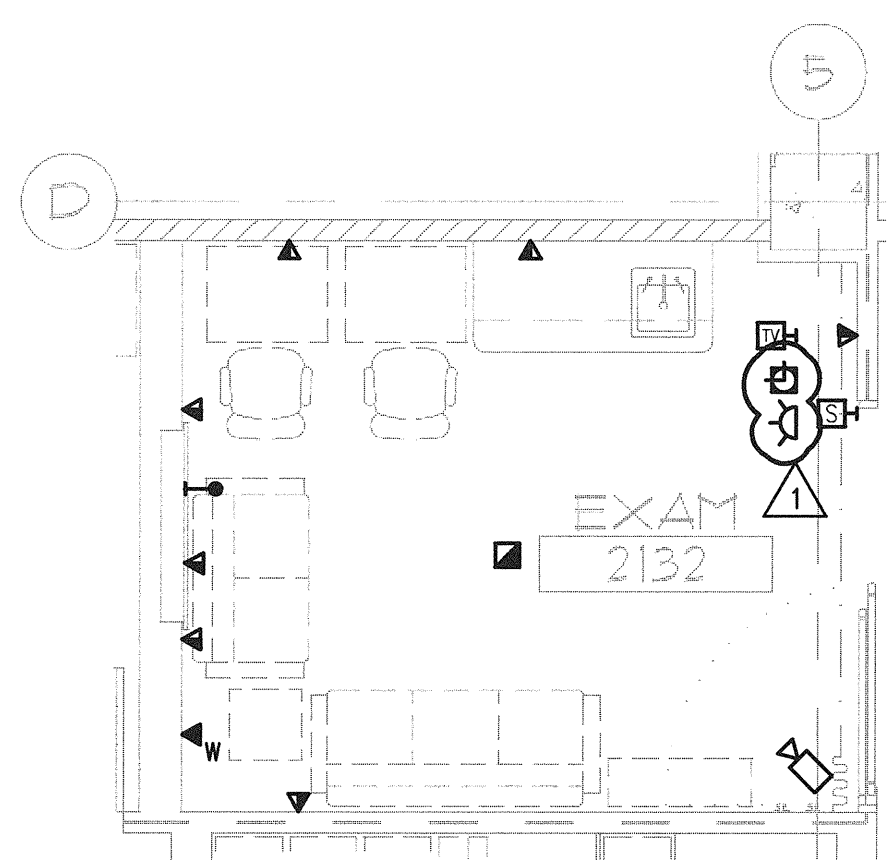
3 2ND FL TYPICAL EXAM RM ENLARGED PLAN - POWER
E7.12 SCALE: AS INDICATED
0 1 2 4 8 12
as indicated feet



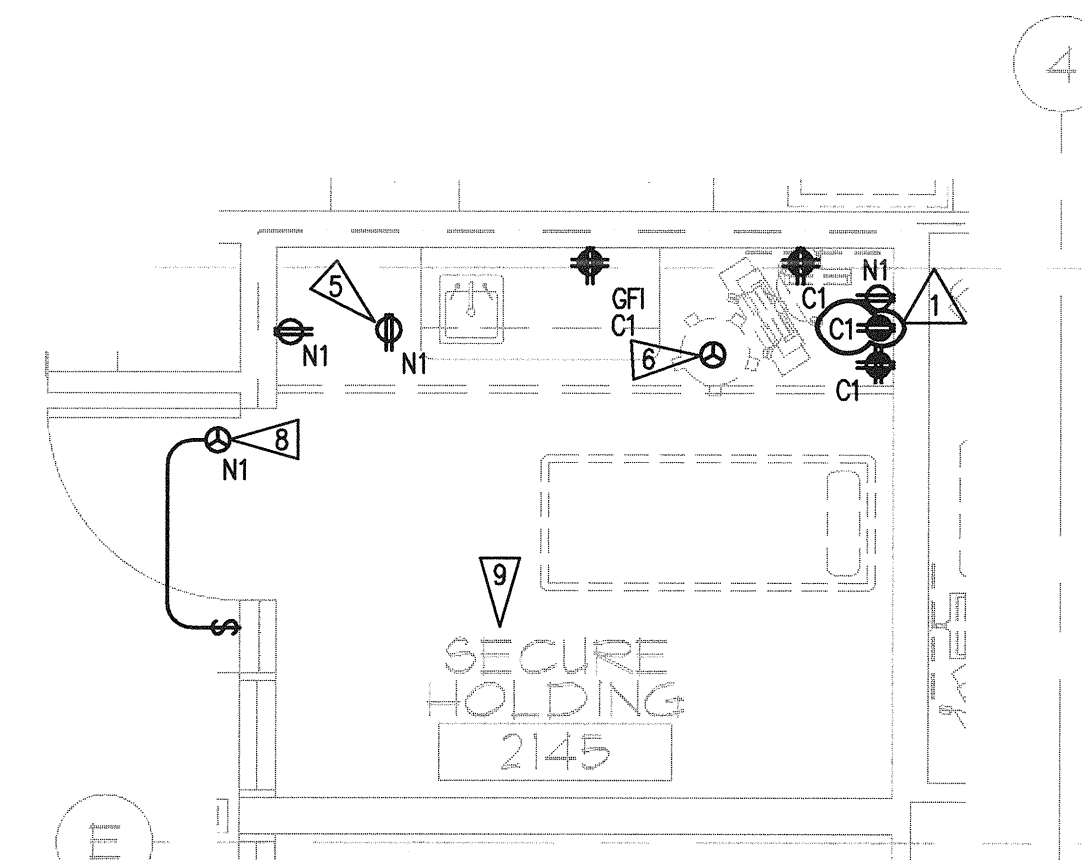
4 2ND FL TYPICAL EXAM RM ENLARGED PLAN - SYSTEMS
E7.12 SCALE: AS INDICATED
0 1 2 4 8 12
as indicated feet



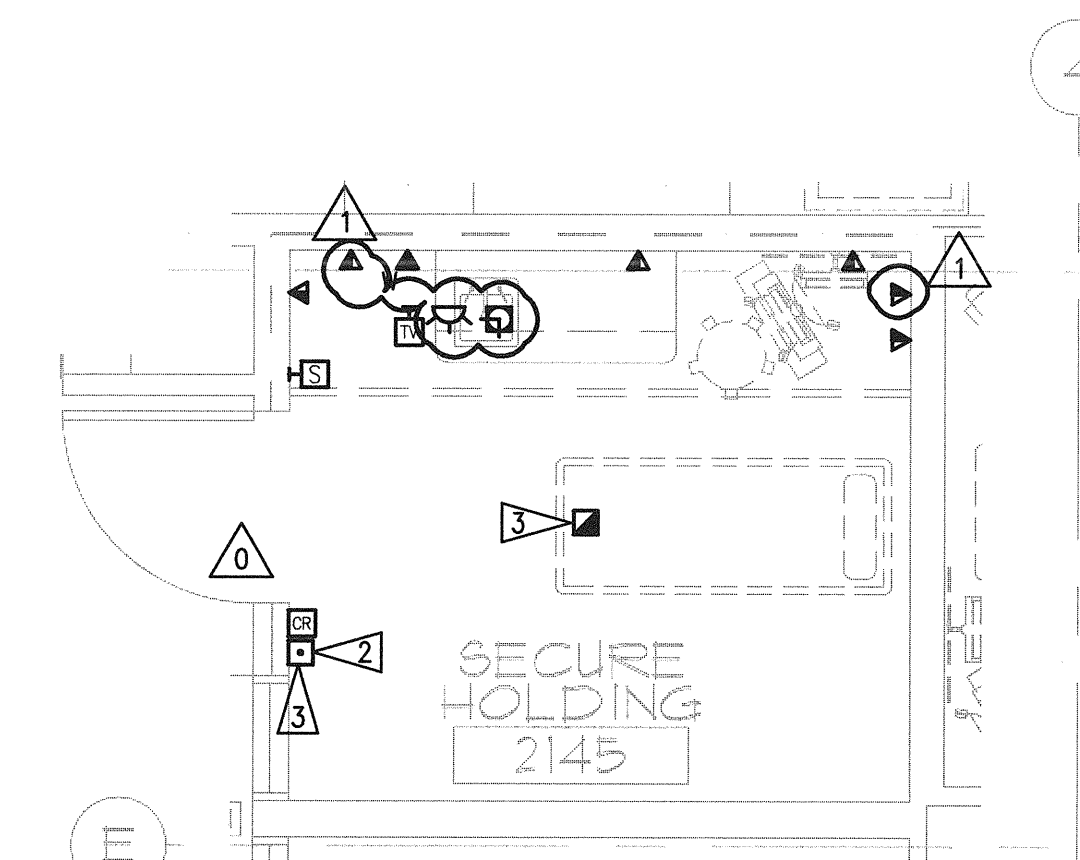
5 2ND FL TYPICAL EXAM RM ENLARGED PLAN - POWER
E7.12 SCALE: AS INDICATED
0 1 2 4 8 12
as indicated feet



6 2ND FL TYPICAL EXAM RM ENLARGED PLAN - SYSTEMS
E7.12 SCALE: AS INDICATED
0 1 2 4 8 12
as indicated feet



7 2ND FL TYPICAL SECURE EXAM RM ENLARGED PLAN - POWER
E7.12 SCALE: AS INDICATED
0 1 2 4 8 12
as indicated feet



8 2ND FL TYPICAL SECURE EXAM RM ENLARGED PLAN - SYSTEMS
E7.12 SCALE: AS INDICATED
0 1 2 4 8 12
as indicated feet

GENERAL NOTES

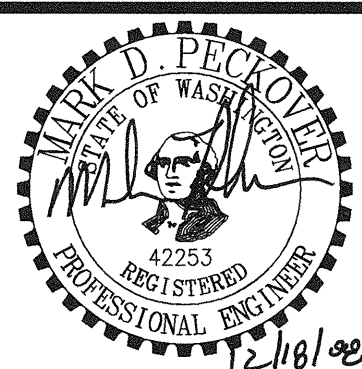
- SEE ARCHITECTURAL PLANS, SECTIONS AND ELEVATIONS FOR EXACT EQUIPMENT AND DEVICE LOCATIONS, INCLUDING MOUNTING HEIGHTS.
- PROVIDE RED DEVICES AND COVERPLATES FOR DEVICES SERVED FROM EMERGENCY POWER SYSTEM.
- ABOVE COUNTER RECEPTACLES LOCATED WITHIN 5' OF SINK SHALL BE GFI RATED.

FLAG NOTES

- MOUNT TELEVISION DATA J-BOX TO FACE OF SOFFIT.
- PANIC BUTTON CONNECTION.
- PROVIDE VANDAL RESISTANT COVERS.
- ALL RECEPTACLES THIS ROOM SHALL BE LISTED AS 'SAFETY' TYPE RECEPTACLES.
- LOCATE RECEPTACLE ADJACENT TO TELEVISION OUTLET.
- PROVIDE HARD-WIRED CONNECTION TO BARIATRIC-LIFT MOTOR LOCATED IN CEILING SPACE.
- PROVIDE HARD-WIRED CONNECTION FOR AUTO-SINK SENSOR.
- PROVIDE HARD-WIRED CONNECTION FOR SECURITY DOOR LOCATED OUTSIDE OF ROOM.
- ALL RECEPTACLES THIS ROOM SHALL BE LISTED AS 'TAMPER-PROOF' RECEPTACLES.
- PROVIDE HARD-WIRED CONNECTION TO ROLL-DOWN SECURITY GATE. PROVIDE SWITCH AS SHOWN.

GIFFIN • BOLTE • JURGENS
ARCHITECTS

815 S.W. SECOND AVENUE • PORTLAND, OREGON 97204
(503) 223-0992 www.gbjarch.com FAX (503) 294-3961



MultiCare
EMERGENCY DEPARTMENT & CANCER CENTER EXPANSION

TACOMA, WASHINGTON

100% CD SET 9/26/08
CCD #4 12/17/08

Date 09-26-2008
Scale AS INDICATED
Drawn By TSW
Job No. 4034

ENLARGED PLANS
ELECTRICAL

E7
12