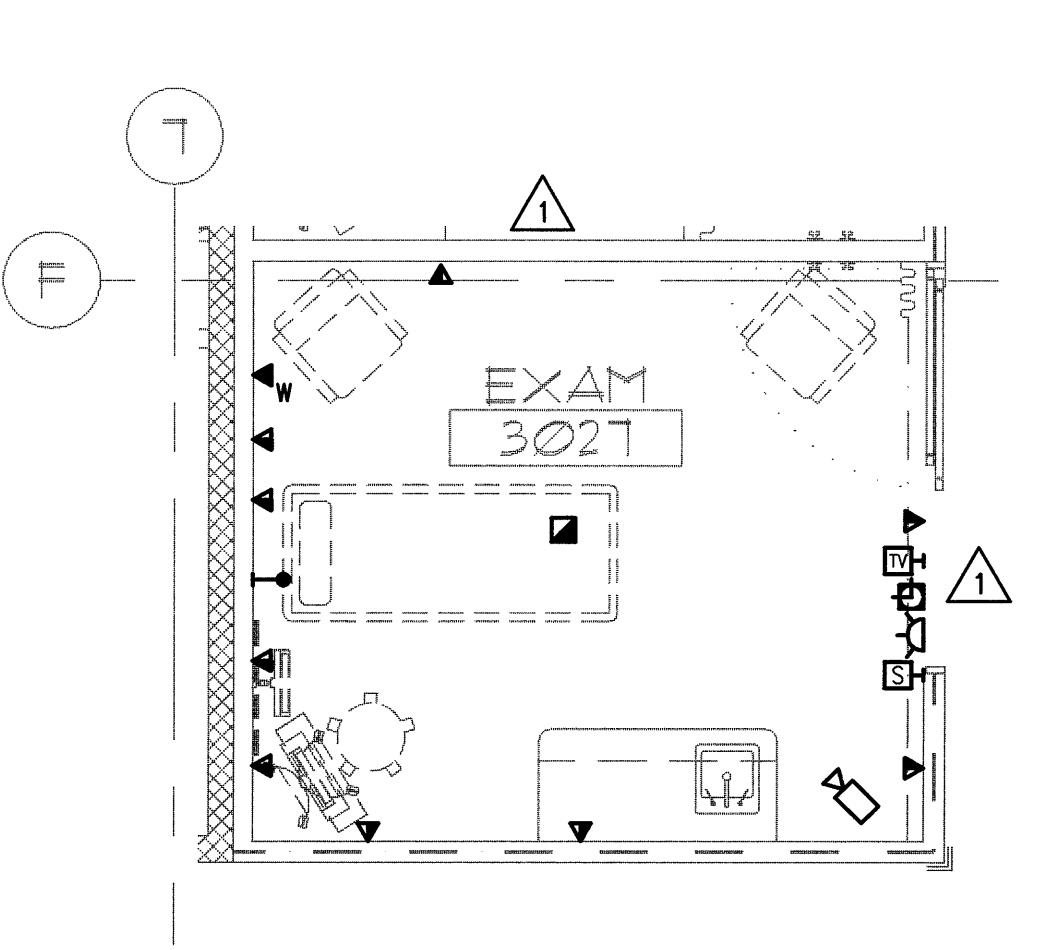
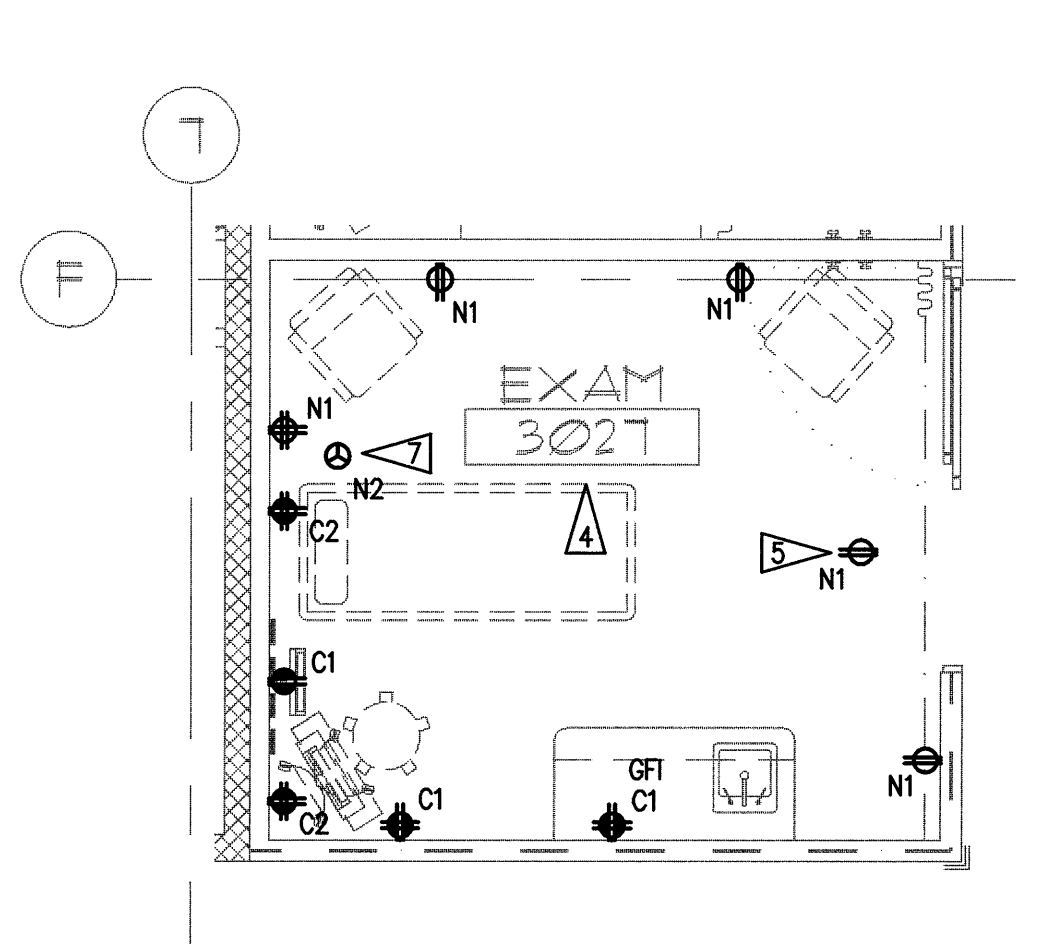
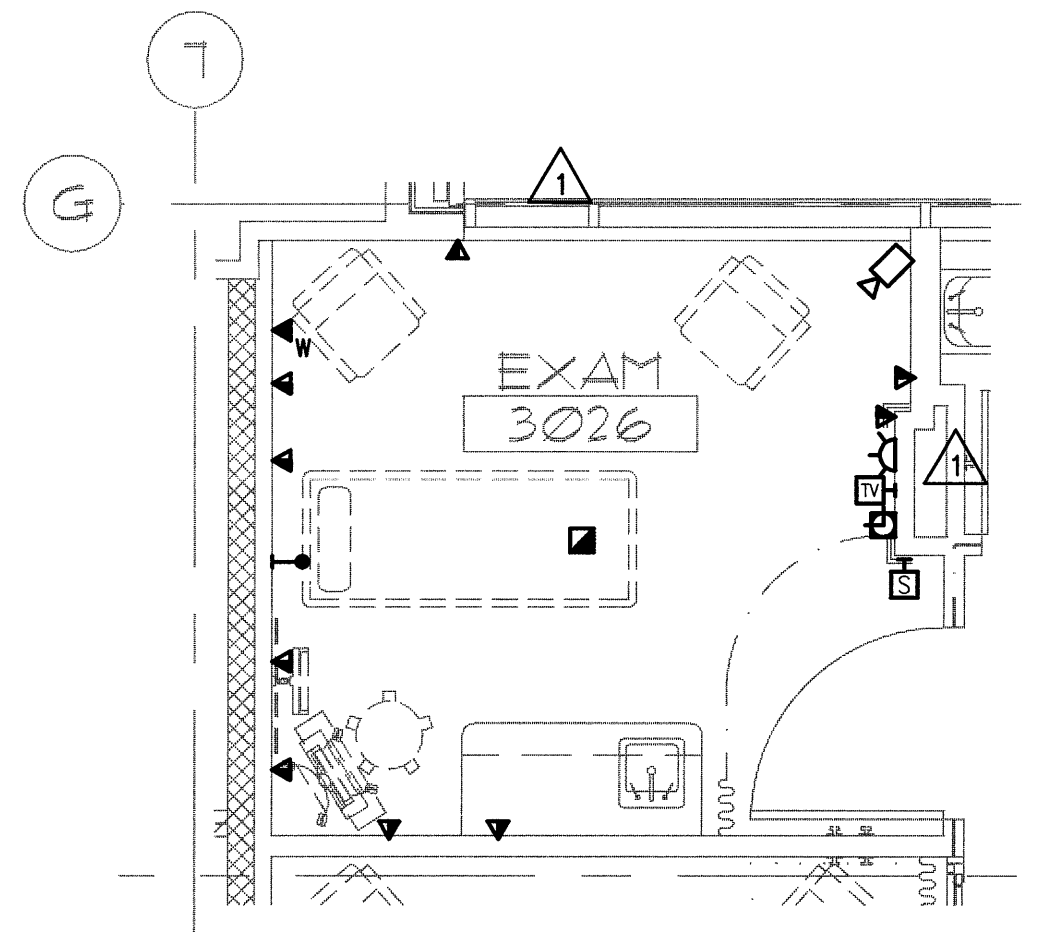
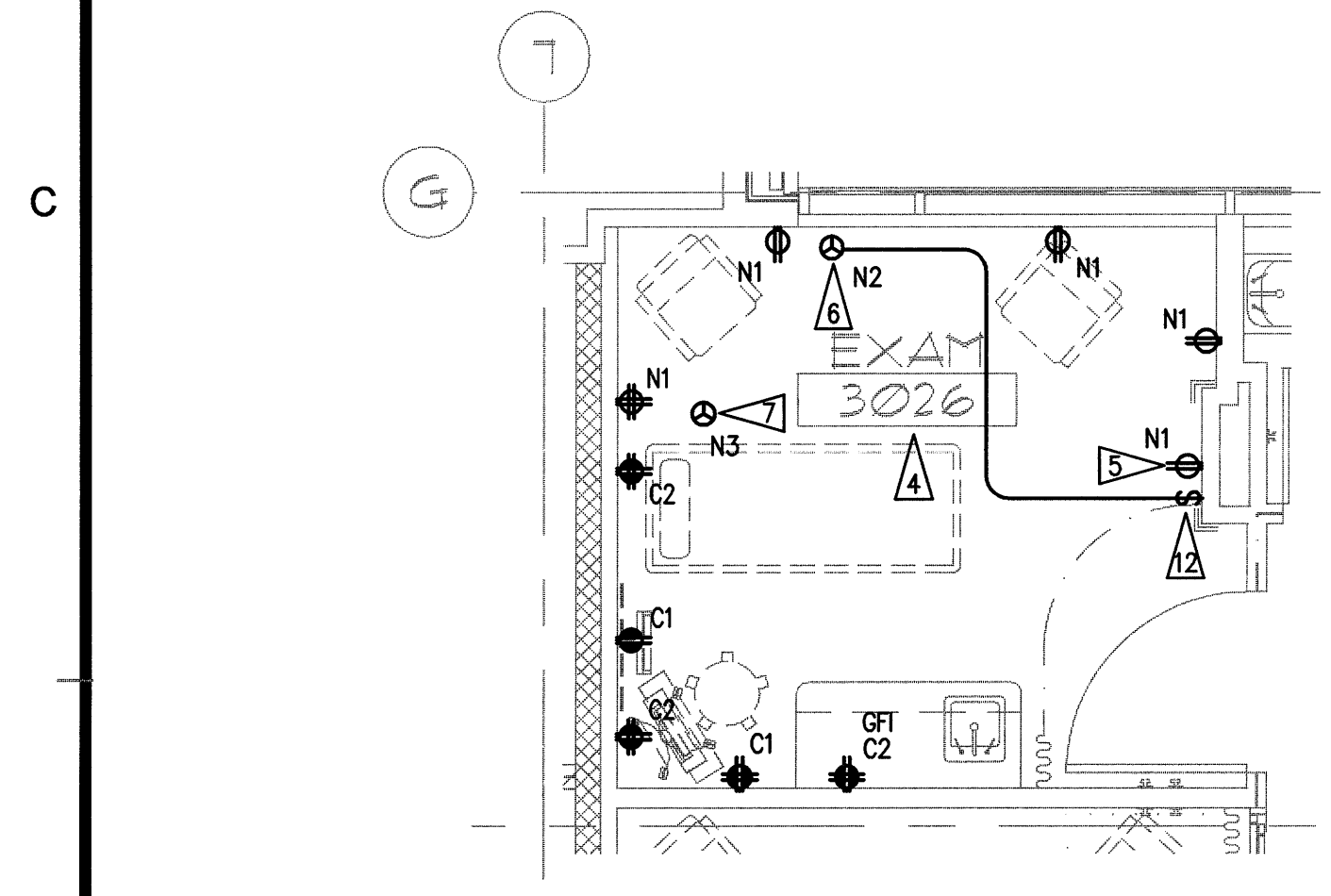


1 2ND FL TYPICAL TRAUMA RM ENLARGED PLAN - POWER  
 E7.13 SCALE: AS INDICATED  
 0 1 2 4 8 12  
 as Indicated feet

2 2ND FL TYPICAL TRAUMA RM ENLARGED PLAN - SYSTEMS  
 E7.13 SCALE: AS INDICATED  
 0 1 2 4 8 12  
 as Indicated feet

3 2ND FL TYPICAL TRAUMA RM ENLARGED PLAN - POWER  
 E7.13 SCALE: AS INDICATED  
 0 1 2 4 8 12  
 as Indicated feet

4 2ND FL TYPICAL TRAUMA RM ENLARGED PLAN - SYSTEMS  
 E7.13 SCALE: AS INDICATED  
 0 1 2 4 8 12  
 as Indicated feet



5 3RD FL TYPICAL EXAM RM ENLARGED PLAN - POWER  
 E7.13 SCALE: AS INDICATED  
 0 1 2 4 8 12  
 as Indicated feet

6 3RD FL TYPICAL EXAM RM ENLARGED PLAN - SYSTEMS  
 E7.13 SCALE: AS INDICATED  
 0 1 2 4 8 12  
 as Indicated feet

7 3RD FL TYPICAL EXAM RM ENLARGED PLAN - POWER  
 E7.13 SCALE: AS INDICATED  
 0 1 2 4 8 12  
 as Indicated feet

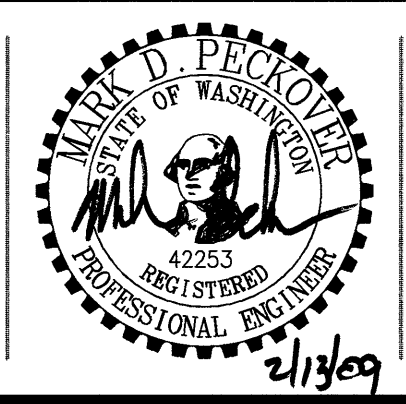
8 3RD FL TYPICAL EXAM RM ENLARGED PLAN - SYSTEMS  
 E7.13 SCALE: AS INDICATED  
 0 1 2 4 8 12  
 as Indicated feet

**GENERAL NOTES**

- SEE ARCHITECTURAL PLANS, SECTIONS AND ELEVATIONS FOR EXACT EQUIPMENT AND DEVICE LOCATIONS, INCLUDING MOUNTING HEIGHTS.
- PROVIDE RED DEVICES AND COVERPLATES FOR DEVICES SERVED FROM EMERGENCY POWER SYSTEM.
- ABOVE COUNTER RECEPTACLES LOCATED WITHIN 5' OF SINK SHALL BE GFI RATED.

**FLAG NOTES**

- DATA CONNECTION TO BOOM. PROVIDE 4" SQUARE BOX.
- PXYS CONNECTION.
- PATIENT MONITOR CONNECTION. PROVIDE 4" SQUARE BOX.
- ALL RECEPTACLES THIS ROOM SHALL BE LISTED AS 'SAFETY' TYPE RECEPTACLES.
- LOCATE RECEPTACLE ADJACENT TO TELEVISION OUTLET.
- PROVIDE HARD-WIRED CONNECTION FOR ROLLER SHADE MOTOR. COORDINATE EXACT LOCATION WITH ARCHITECT PRIOR TO ROUGH-IN.
- PROVIDE HARD WIRED CONNECTION TO BARIATRIC-LIFT MOTOR LOCATED IN CEILING SPACE.
- LOCATE RECEPTACLE ADJACENT TO PACS MONITOR DATA OUTLET.
- PROVIDE (5) DEDICATED CRITICAL BRANCH 120V CIRCUITS WITH ISOLATED NEUTRALS TO MEDICAL BOOM J-BOX. COORDINATE CONNECTIONS TO MEDICAL BOOM PER BOOM WIRING DIAGRAMS.
- RECEPTACLES SHALL BE LOCATED WITHIN CASEWORK. COORDINATE WITH ARCHITECTURAL ELEVATIONS AND CASEWORK PLANS.
- DATA-CAPTOR CONNECTION. PROVIDE SIMPLEX RECEPTACLE LOCATED ON THE EQUIPMENT BOOM. COORDINATE EXACT LOCATION WITH OWNER AND MANUFACTURER PRIOR TO ROUGH-IN.
- ROLLER SHADE SWITCH IS PROVIDED BY VENDOR. INSTALLED BY DIVISION 26. COORDINATE BOX SIZE AND CONDUCTOR TERMINATION REQUIREMENTS WITH MANUFACTURER PRIOR TO ROUGH-IN. COORDINATE EXACT SWITCH LOCATION WITH ARCHITECT.



N:\B13608\CADD-05\06\_E7-13.DWG FEB 13, 2009 - 11:24:57 AM BY: TWHITE