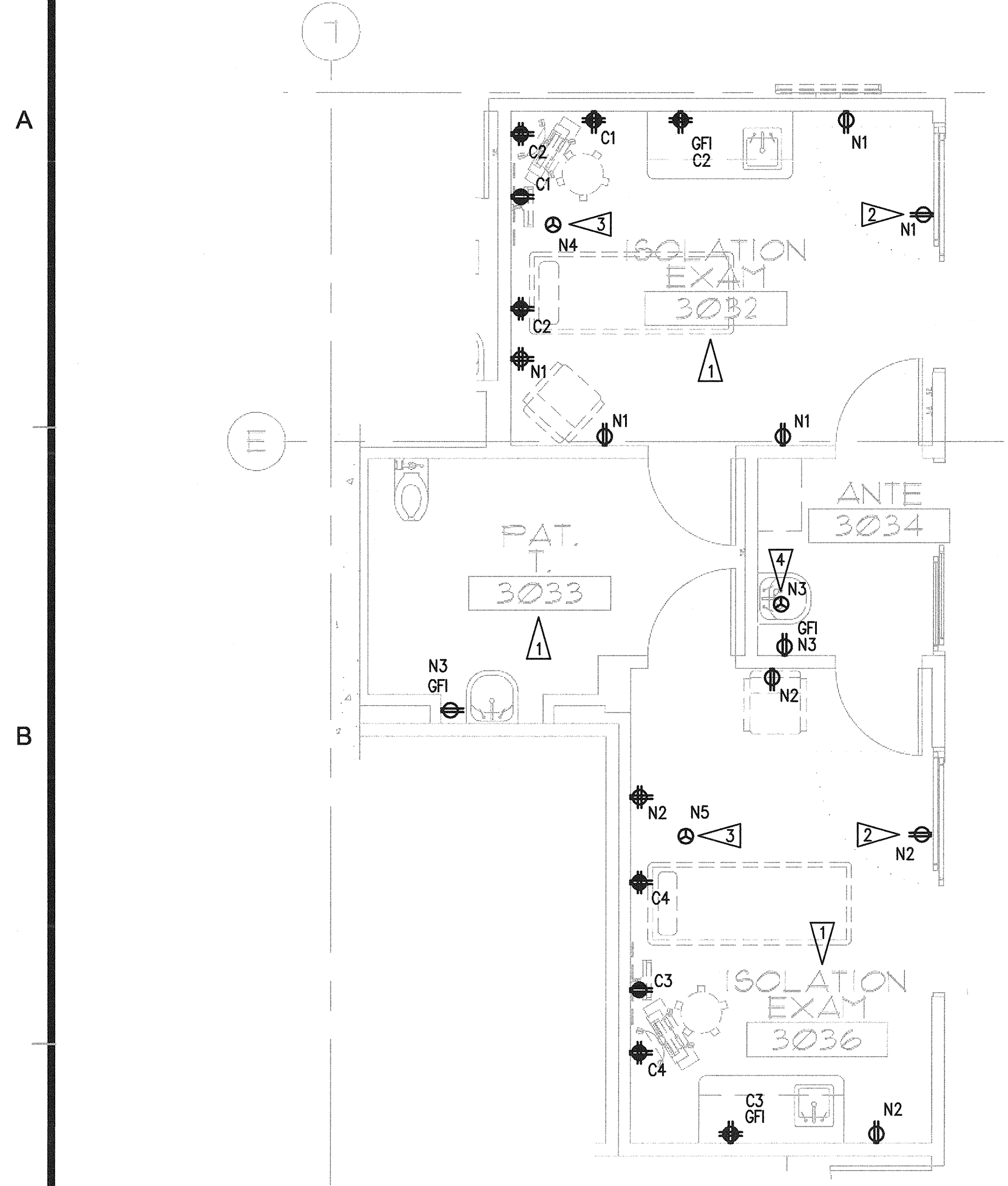
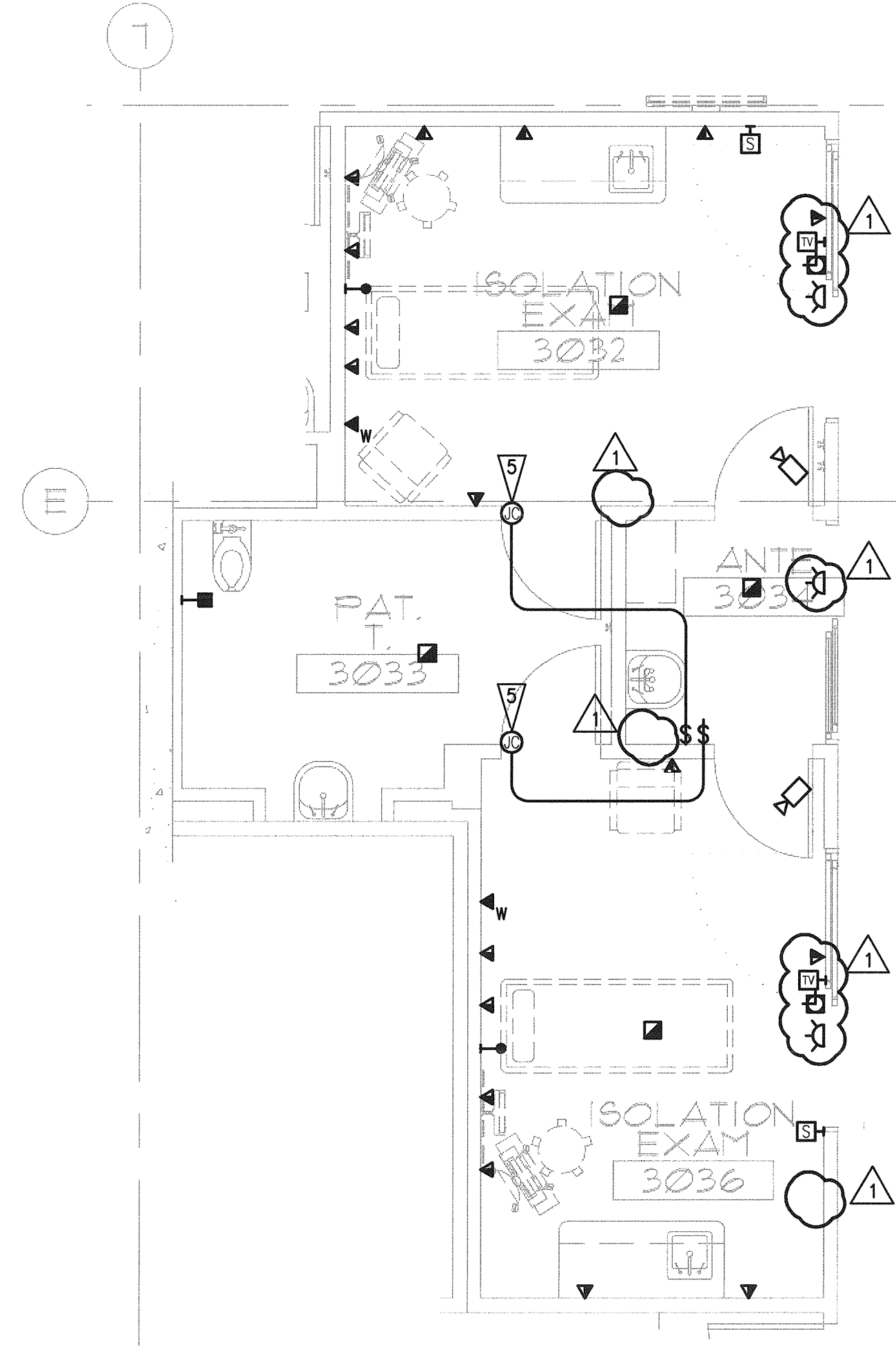


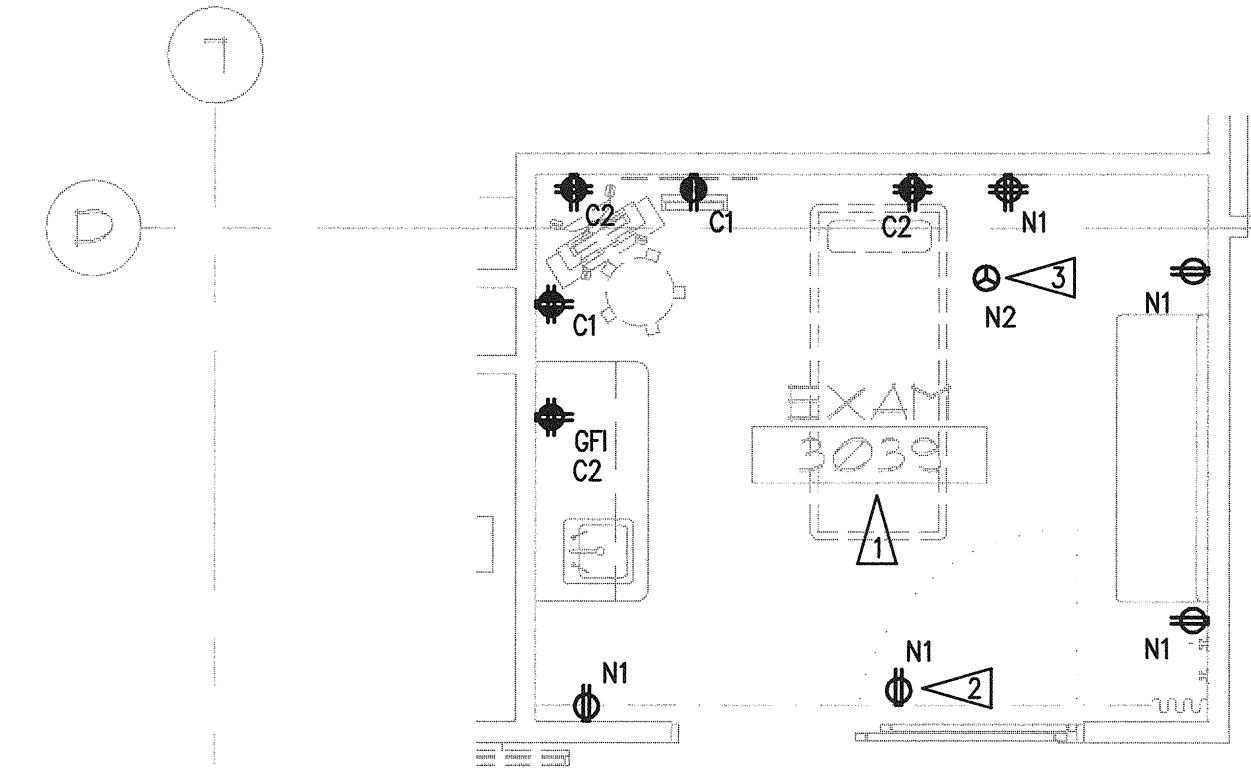
N:\B13608\CADD-05\07.E7-14.DWG DEC 16, 2008 - 11:39:57 AM BY: JLUO



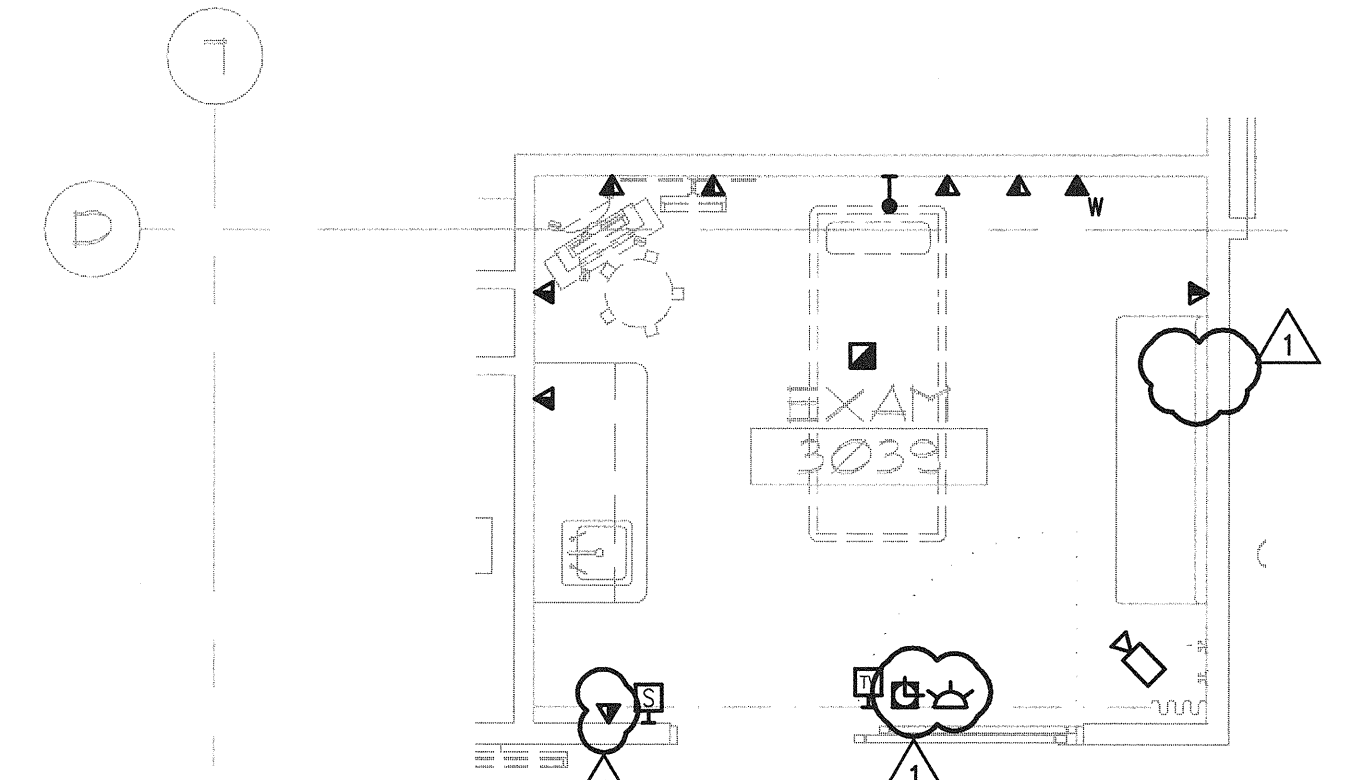
1 3RD FL TYPICAL ISOLATION RM ENLARGED PLAN - POWER  
E7.14 SCALE: AS INDICATED  
0 1 2 4 8 12  
as indicated feet



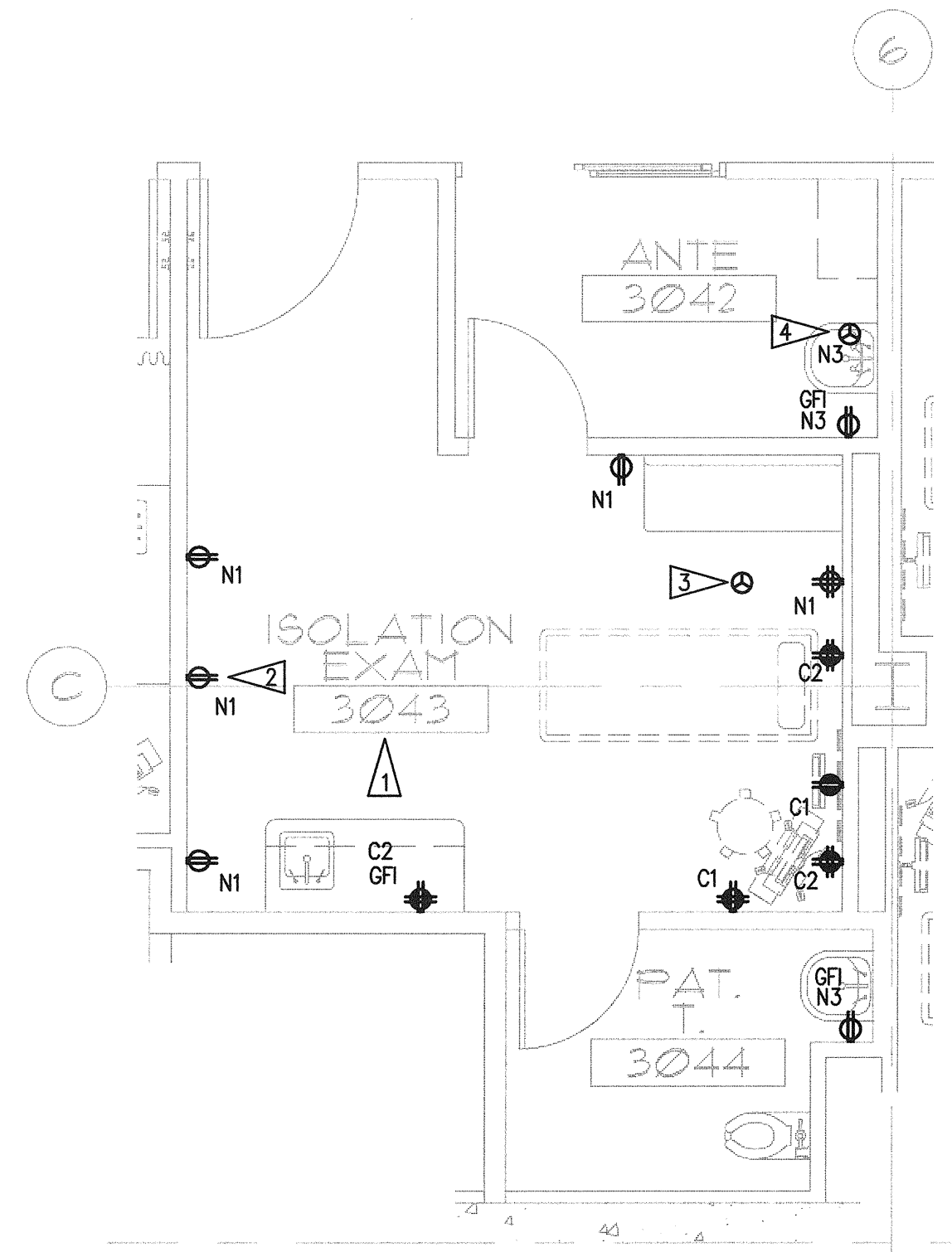
2 3RD FL TYPICAL ISOLATION RM ENLARGED PLAN - SYSTEMS  
E7.14 SCALE: AS INDICATED  
0 1 2 4 8 12  
as indicated feet



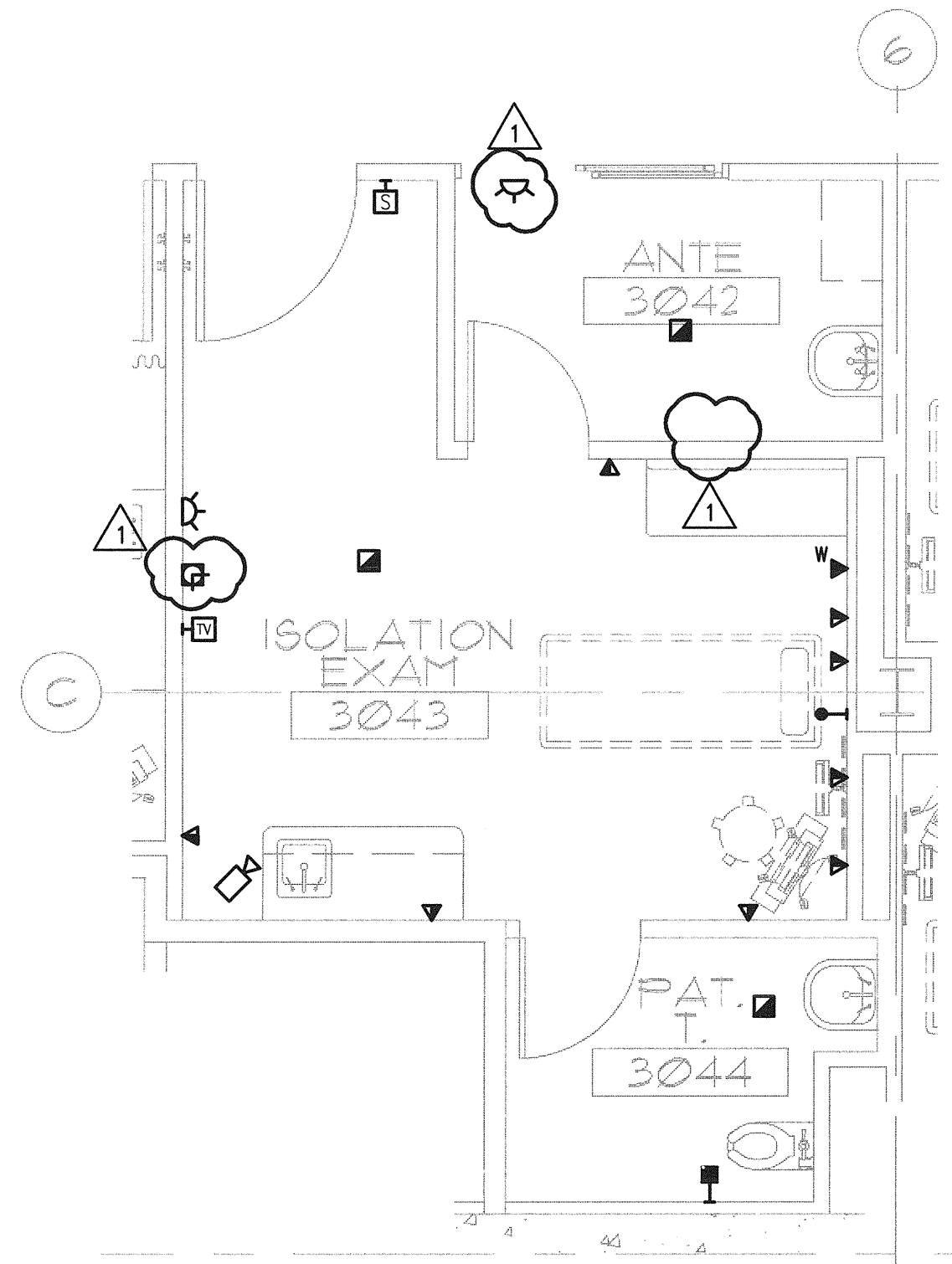
3 3RD FL TYPICAL EXAM RM ENLARGED PLAN - POWER  
E7.14 SCALE: AS INDICATED  
0 1 2 4 8 12  
as indicated feet



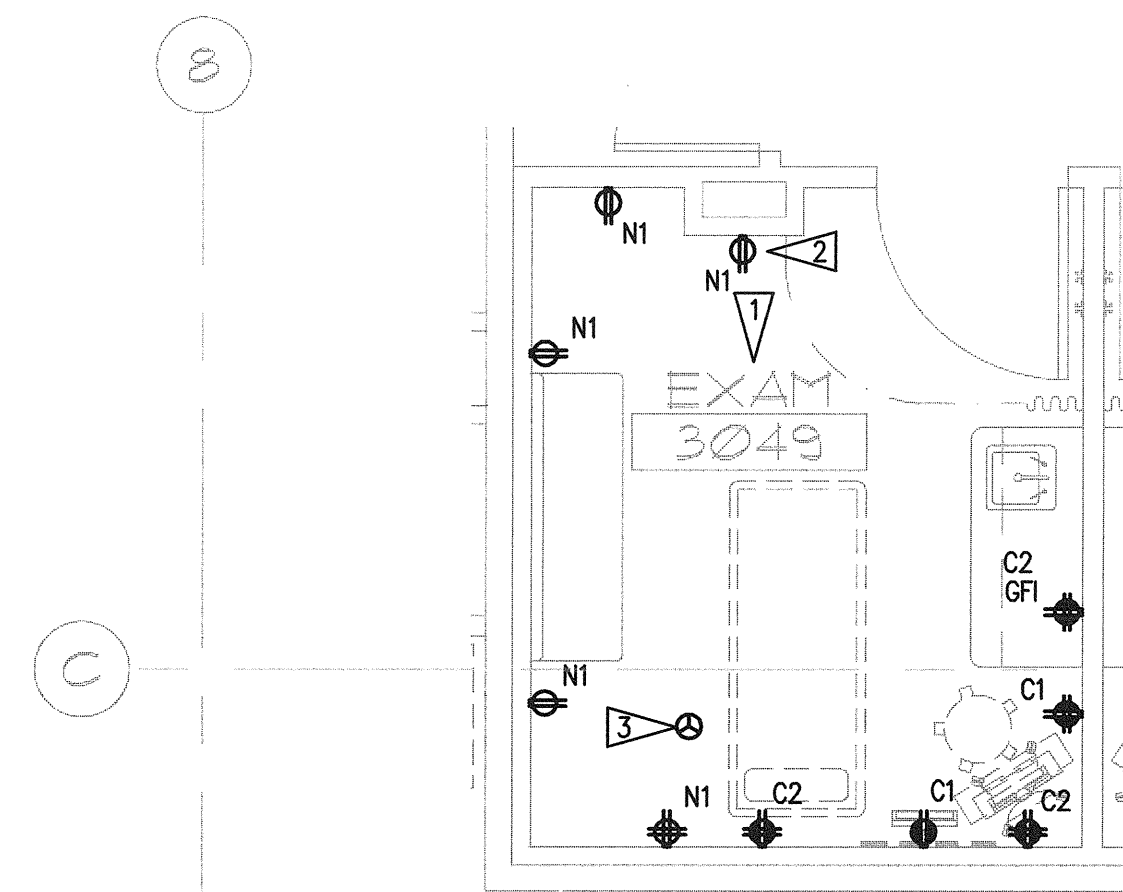
4 3RD FL TYPICAL EXAM RM ENLARGED PLAN - POWER  
E7.14 SCALE: AS INDICATED  
0 1 2 4 8 12  
as indicated feet



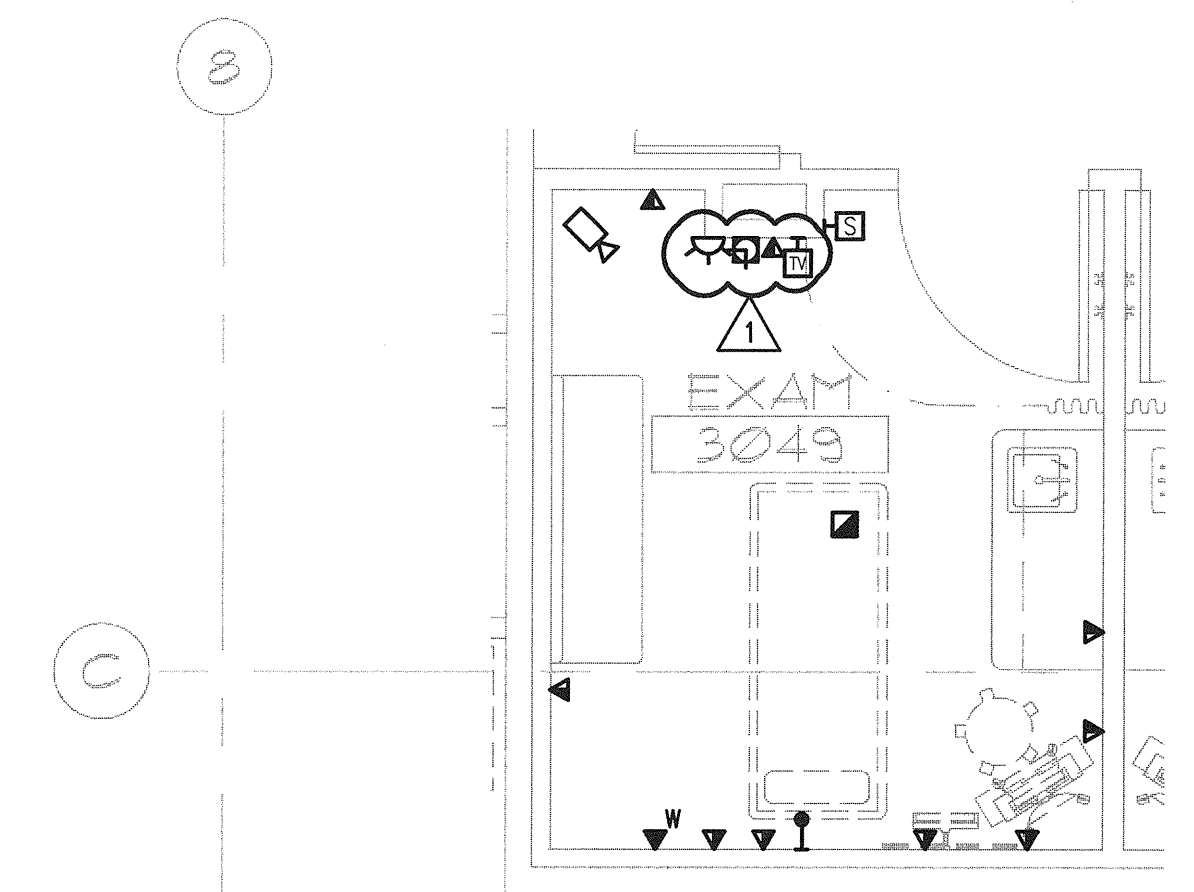
5 3RD FL TYPICAL ISOLATION RM ENLARGED PLAN - POWER  
E7.14 SCALE: AS INDICATED  
0 1 2 4 8 12  
as indicated feet



6 3RD FL TYPICAL ISOLATION RM ENLARGED PLAN - SYSTEM  
E7.14 SCALE: AS INDICATED  
0 1 2 4 8 12  
as indicated feet



7 3RD FL TYPICAL EXAM RM ENLARGED PLAN - POWER  
E7.14 SCALE: AS INDICATED  
0 1 2 4 8 12  
as indicated feet



8 3RD FL TYPICAL EXAM RM ENLARGED PLAN - POWER  
E7.14 SCALE: AS INDICATED  
0 1 2 4 8 12  
as indicated feet

#### GENERAL NOTES

- SEE ARCHITECTURAL PLANS, SECTIONS AND ELEVATIONS FOR EXACT EQUIPMENT AND DEVICE LOCATIONS, INCLUDING MOUNTING HEIGHTS.
- PROVIDE RED DEVICES AND COVERPLATES FOR DEVICES SERVED FROM EMERGENCY POWER SYSTEM.
- ABOVE COUNTER RECEPTACLES LOCATED WITHIN 5' OF SINK SHALL BE GFI RATED.

#### FLAG NOTES

- ALL RECEPTACLES THIS ROOM SHALL BE LISTED AS 'SAFETY' TYPE RECEPTACLES.
- LOCATE RECEPTACLE ADJACENT TO TELEVISION OUTLET.
- BARiatric-LIFT MOTOR CONNECTION LOCATED IN CEILING SPACE.
- AUTO-SINK SENSOR ELECTRICAL CONNECTION.
- PROVIDE HAED-WIRED CONNECTION FOR LOW VOLTAGE DOOR LOCKS. CONNECT TO SWITCH AS SHOWN.

100% CD SET 9/26/08  
CCD #4 12/17/08

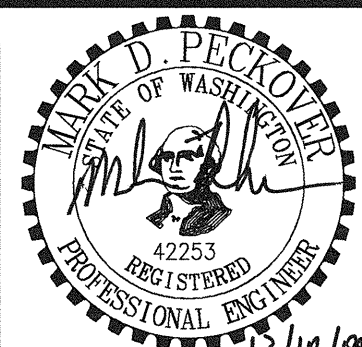

Date 09-26-2008  
Scale AS INDICATED  
Drawn By TSW  
Job No. 4034

ENLARGED PLANS  
ELECTRICAL

E7  
14

GIFFIN • BOLTE • JURGENS  
ARCHITECTS

815 S.W. SECOND AVENUE • PORTLAND, OREGON 97204  
(503) 223-0992 www.gbjarch.com FAX (503) 294-3961



MultiCare  
EMERGENCY DEPARTMENT & CANCER CENTER EXPANSION

TACOMA, WASHINGTON