

A

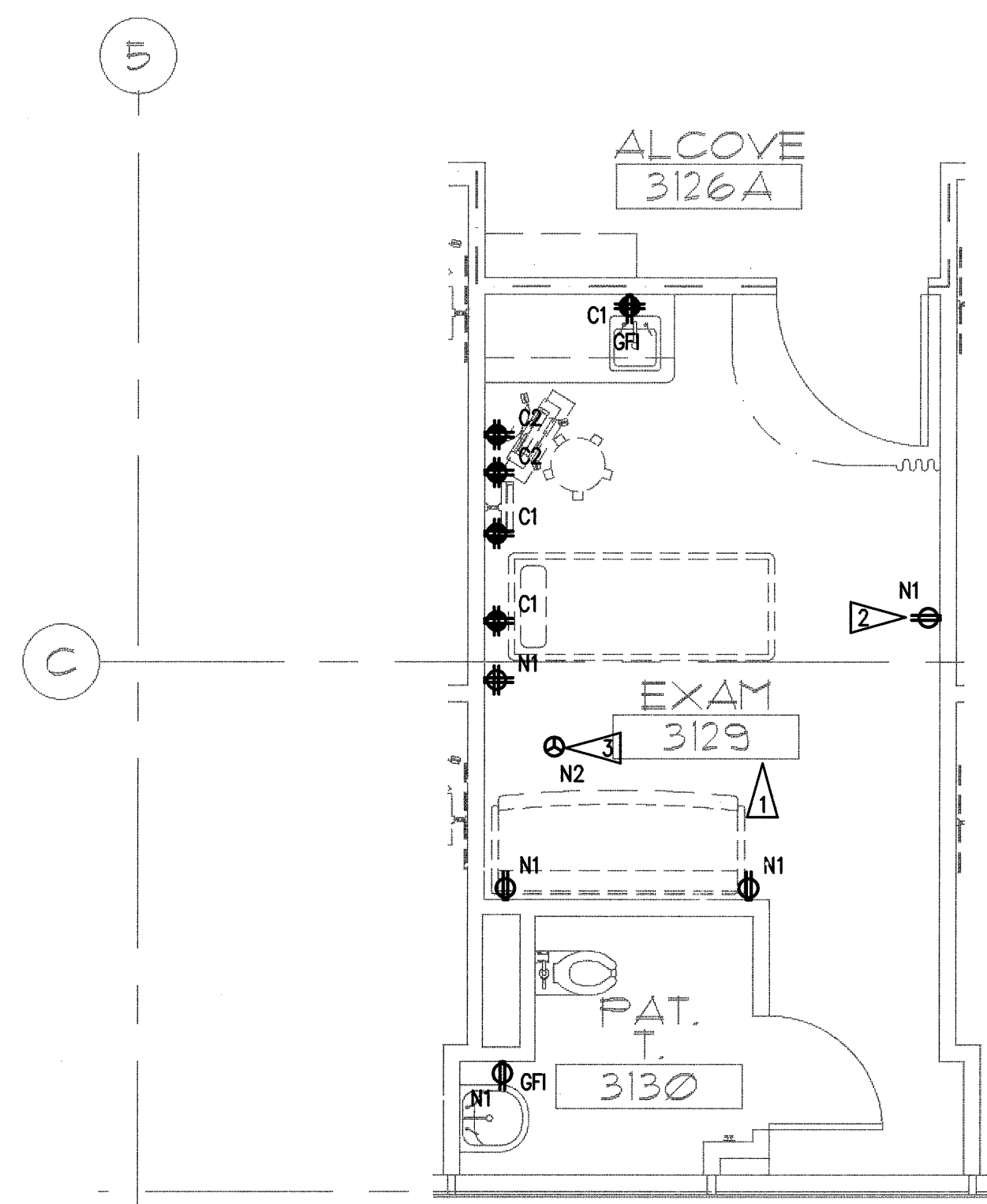
B

C

D

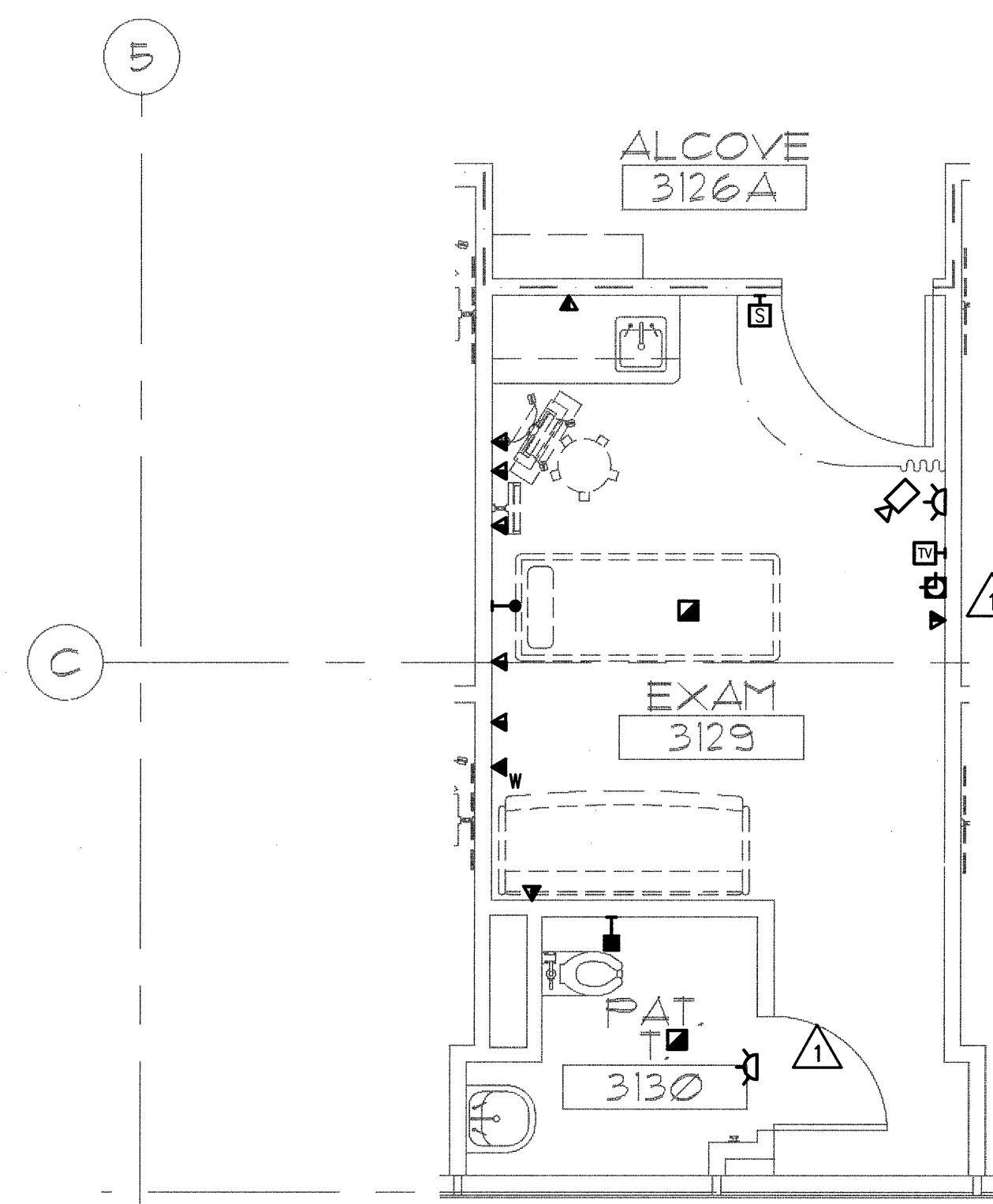
E

N:\B15608\CADD-05\08.E7-15.DWG FEB 13, 2009 - 11:24:38 AM BY: TWHITE



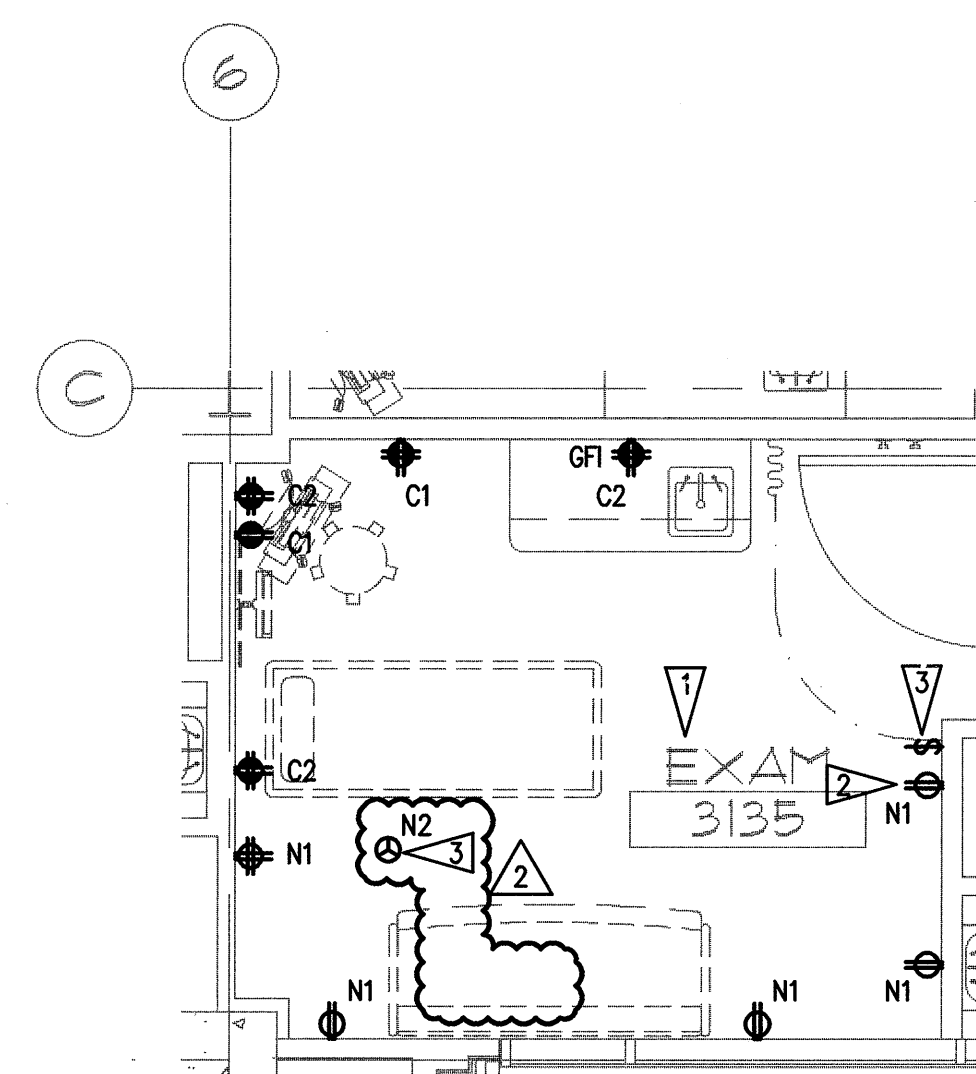
1 3RD FL TYPICAL PAT RM ENLARGED PLAN - POWER  
E7.15 SCALE: AS INDICATED

0 1 2 4 8 12  
as indicated feet



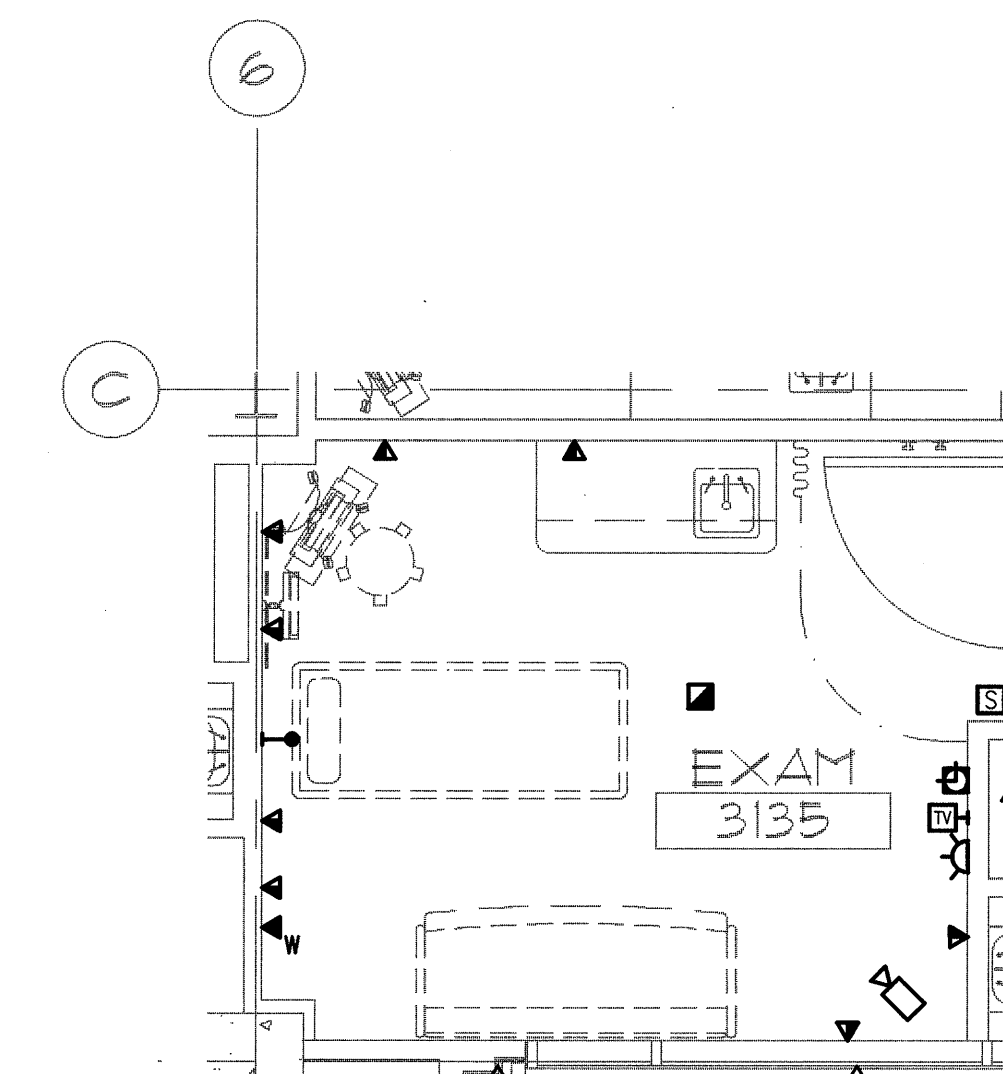
2 3RD FL TYPICAL PAT RM ENLARGED PLAN - SYSTEMS  
E7.15 SCALE: AS INDICATED

0 1 2 4 8 12  
as indicated feet



3 3RD FL TYPICAL PAT RM ENLARGED PLAN - POWER  
E7.15 SCALE: AS INDICATED

0 1 2 4 8 12  
as indicated feet



4 3RD FL TYPICAL PAT RM ENLARGED PLAN - SYSTEMS  
E7.15 SCALE: AS INDICATED

0 1 2 4 8 12  
as indicated feet

### GENERAL NOTES

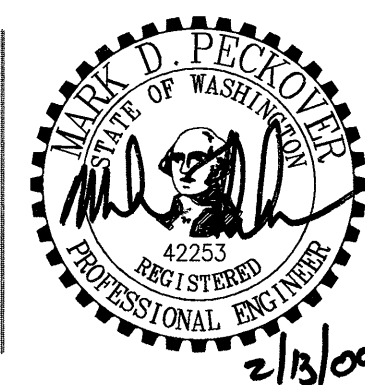
- SEE ARCHITECTURAL PLANS, SECTIONS AND ELEVATIONS FOR EXACT EQUIPMENT AND DEVICE LOCATIONS, INCLUDING MOUNTING HEIGHTS.
- PROVIDE RED DEVICES AND COVERPLATES FOR DEVICES SERVED FROM EMERGENCY POWER SYSTEM.
- ABOVE COUNTER RECEPTACLES LOCATED WITHIN 5' OF SINK SHALL BE GFI RATED.  
NOTE.

### FLAG NOTES

- ALL RECEPTACLES THIS ROOM SHALL BE LISTED AS "SAFETY" TYPE RECEPTACLES.
- LOCATE RECEPTACLE ADJACENT TO TELEVISION OUTLET.
- PROVIDE HARD-WIRED CONNECTION FOR BARIATRIC-LIFT MOTOR LOCATED IN CEILING SPACE.
- NOT USED.
- ROLLER SHADE SWITCH IS PROVIDED BY VENDOR, INSTALLED BY DIVISION 26. COORDINATE BOX SIZE AND CONDUCTOR TERMINATION REQUIREMENTS WITH MANUFACTURER PRIOR TO ROUGH-IN. COORDINATE EXACT SWITCH LOCATION WITH ARCHITECT.

GIFFIN • BOLTE • JURGENS  
ARCHITECTS

815 S.W. SECOND AVENUE • PORTLAND, OREGON 97204  
(503) 223-0992 www.gbjarch.com FAX (503) 294-3961



MultiCare  
EMERGENCY DEPARTMENT & CANCER CENTER EXPANSION

TACOMA, WASHINGTON

100% CD SET 9/26/08  
CCD #4 12/17/08  
CCD #7 2/20/09

Date 09-26-2008  
Scale AS INDICATED  
Drawn By TSW  
Job No. 4034

ENLARGED PLANS  
ELECTRICAL

E7  
15