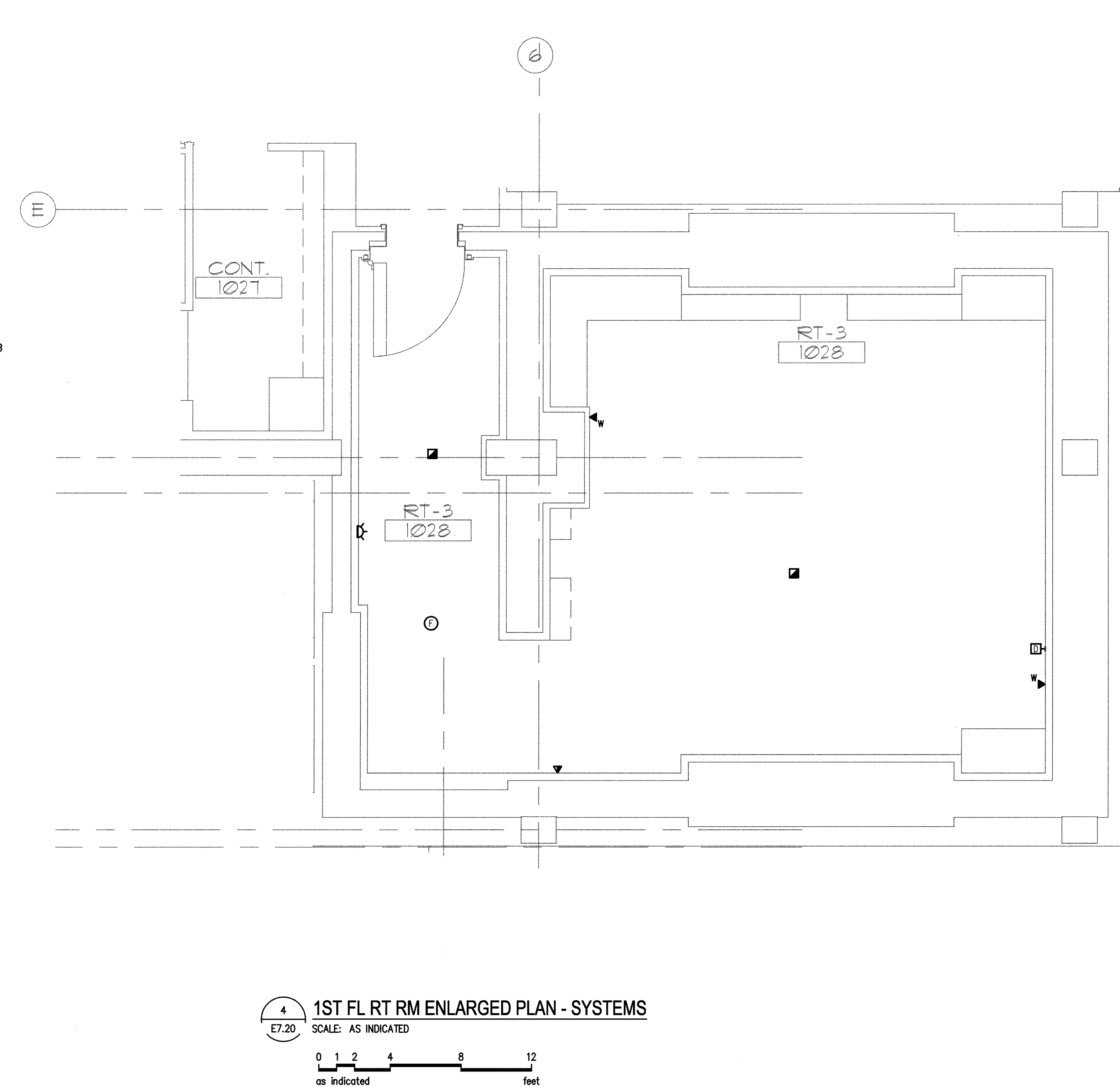


2
E7.20

1ST FL SIMUL HDR ENLARGED PLAN - SYSTEMS

SCALE: AS INDICATED



4 1ST FL RT RM ENLARGED PLAN - SYSTEMS
E7.20 SCALE: AS INDICATED

- ## FLAG NOTES
- PROVIDE MAIN CIRCUIT BREAKER PANEL FOR ON-BOARD WAGER "08" FLUSH MOUNTED WITHIN WALL. PROVIDE 150 MAIN CIRCUIT BREAKER. GE J08B60A480V OR APPROVED EQUAL.
 - PROVIDE MAIN CIRCUIT BREAKER PANEL FOR CLINAC 2100(C) FLUSH MOUNTED WITHIN WALL. PROVIDE 150 MAIN CIRCUIT BREAKER WITH UVF CAPABILITY. RECOMMEND GE #JEDUVFRS 24VDC FOR UVF. CE #J00CB150A OR APPROVED EQUAL.
 - PROVIDE CONNECTION TO SAFETY DOOR INTERLOCK SYSTEM. PROVIDE ALL INTERCONNECTING WIRING AND CONDUIT PER DOOR HARDWARE SCHEDULE AND WIRING DRAWINGS.
 - PROVIDE 4-BOX (12"x12"x6" DEEP) FOR LASER AND ROOM LIGHT CONTROL RELAYS AND LOCATE IN ACCESSIBLE CEILING SPACE NEAR MODULAR CABINET. PROVIDE WITH (4) 20A CONTROL RELAYS - BRUNFELD PRO1100Q-24 OR APPROVED EQUAL. CONTRACTOR SHALL PROVIDE ALL CONTROL WIRING AND CONDUIT.
 - PROVIDE 12"x24"x10" DEEP BASE FRAME PULL BOX FLUSH-MOUNTED IN FLOOR.
 - PROVIDE 18"x24"x6" DEEP PULL BOX FLUSH-MOUNTED IN FLOOR FOR MODULAR CABINET.
 - PROVIDE 18"x24"x6" WALL MOUNTED PULL BOX FLUSH-MOUNTED IN WALL FOR CONTROL EQUIPMENT WIRING.
 - PROVIDE HARD WIRED CONNECTION TO POWER DOOR ASSIST.
 - PROVIDE PULL-BOX SIZED TO PULL (4) CAT-5E CABLES.
 - PROVIDE MAIN CIRCUIT BREAKER PANEL FOR ACUTY MAIN. PROVIDE 60 MAIN CIRCUIT BREAKER WITH UVF CAPABILITY FLUSH MOUNTED WITHIN WALL. GE #JACU60A480V OR APPROVED EQUAL.
 - PROVIDE 18"x12"x6" DEEP BASE FRAME PULL BOX FLUSH-MOUNTED IN FLOOR.
 - PROVIDE 18"x12"x6" WALL MOUNTED PULL BOX FLUSH-MOUNTED IN WALL FOR CONTROL EQUIPMENT WIRING.
 - PROVIDE 4-BOX (12"x12"x6" DEEP) FOR LASER AND ROOM LIGHT CONTROL RELAYS AND LOCATE IN ACCESSIBLE CEILING SPACE NEAR MODULAR CABINET. PROVIDE WITH (2) 20A CONTROL RELAYS - BRUNFELD PRO1100Q-24 OR APPROVED EQUAL. CONTRACTOR SHALL PROVIDE ALL CONTROL WIRING AND CONDUIT.
 - PROVIDE 20A MAIN CIRCUIT BREAKER DISCONNECT FOR GAMMA MED EQUIPMENT FLUSH MOUNTED WITHIN WALL.
 - PROVIDE CONNECTION AND CONTROL WIRING TO "LASER-ON" WARNING LIGHTS FROM RELAY CONTROL BOX.
 - PROVIDE 6"x6"x2" DEEP WALL MOUNTED PULL BOX FLUSH-MOUNTED IN WALL FOR CONTROL CONSOLE WIRING.
 - DOOR TO BE CONNECTED THROUGH VENDOR CONTROL EQUIPMENT. COORDINATE EXACT REQUIREMENTS WITH VENDOR.
 - PROVIDE POWER FROM VENDOR CONTROL EQUIPMENT. COORDINATE EXACT REQUIREMENTS WITH VENDOR.
 - LASER POSITIONING LIGHT CONNECTION.
 - CEILING MOUNTED CAMERA CONNECTION.
 - IN-ROOM MONITOR SWITCHED RECEPTACLE.
 - CONNECT SWITCH TO IN-ROOM MONITOR IN THE TREATMENT VAULT AS SHOWN.
 - CONNECT SWITCH TO CONTROL THE LASER POSITIONING LIGHTS IN THE TREATMENT VAULT AS SHOWN.