

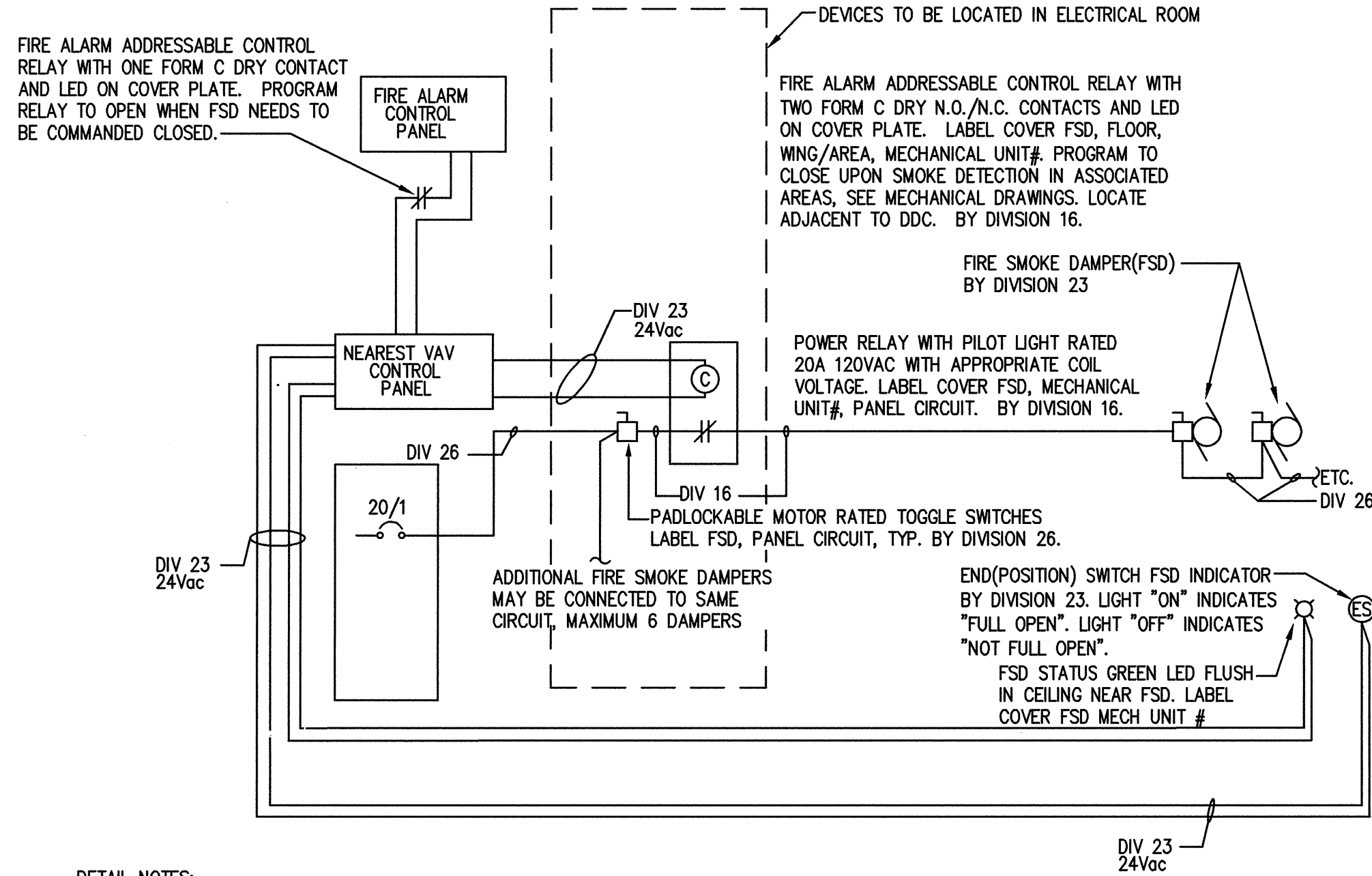
A

B

C

D

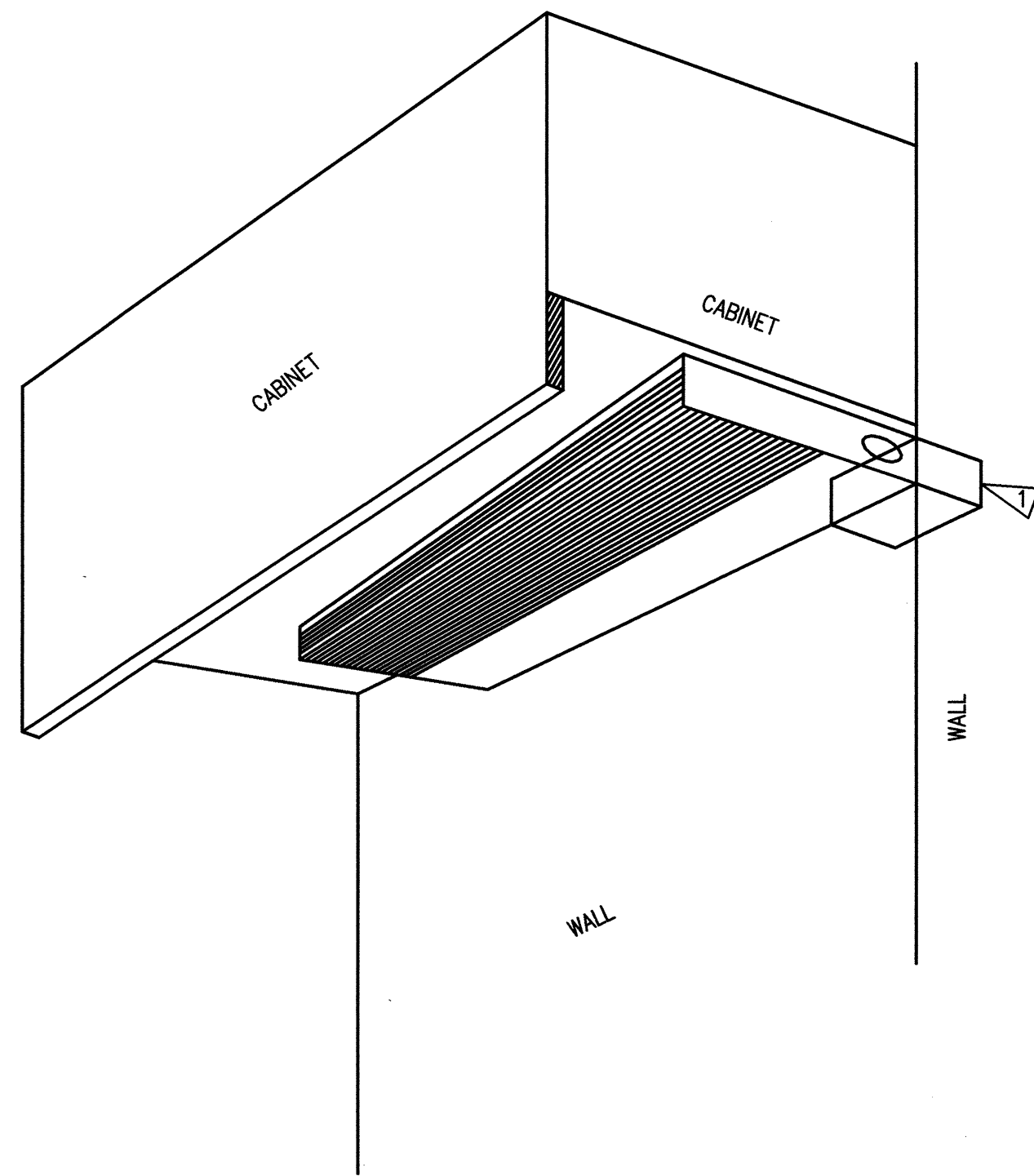
E



DETAIL NOTES:

- DIVISION 23 AND 26 CONTRACTORS SHALL COORDINATE WORK AS INDICATED BELOW. ALL DEVICES SHALL BE U.L. LISTED AND ALL WIRING SHALL BE IN ACCORDANCE WITH CODE. PROGRAM AND SEQUENCE SYSTEMS FOR PROPER OPERATION AND PREVENTION OF DAMAGE TO MECHANICAL DUCTS.
- ONE SET OF RELAYS SHALL BE PROVIDED FOR EACH FAN SYSTEM PER SMOKE ZONE OR SUITE UNLESS OTHERWISE NOTED ON DRAWINGS OR REQUIRED BY SPECIFICATIONS.
- ALL DEVICES SHALL BE LOCATED WHERE ACCESSIBLE AND MAINTAINABLE.
- SEE SEQUENCING MATRIX AND SMOKE DETECTION ZONE MAP(S). SEE BOTH ELECTRICAL AND MECHANICAL DRAWINGS. PROVIDE COORDINATED DOCUMENTATION ON SHOP DRAWINGS.
- DIVISION 23 SHALL BE RESPONSIBLE FOR INCORPORATING PROPER TIME DELAYS BETWEEN FAN START / STOP AND FSD OPEN / CLOSE TO PROTECT SYSTEM DUCTWORK.
- THE TIME DELAY SHALL BE CONTROLLED BY SOFTWARE FOR 30 SECONDS.

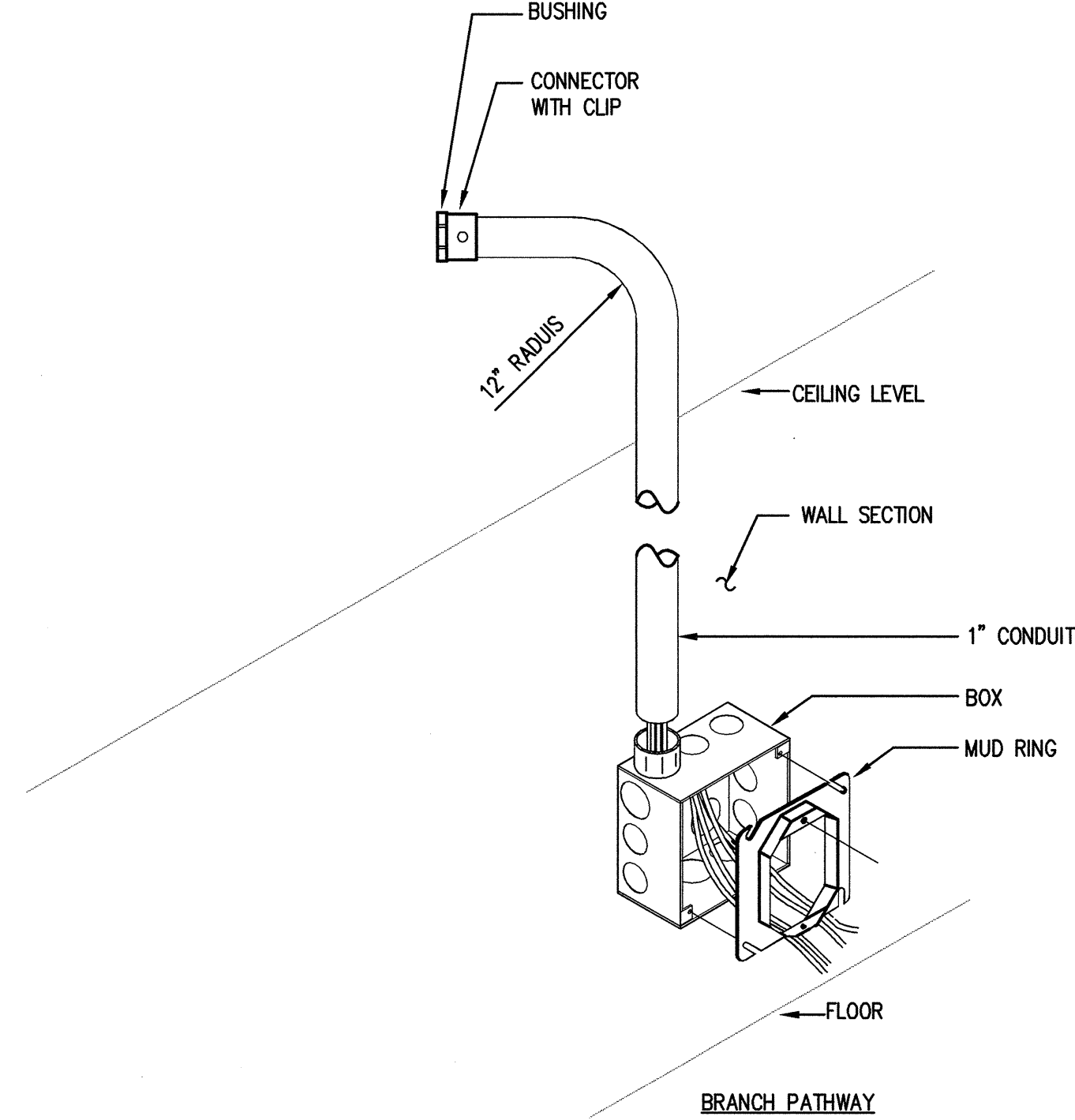
1 FIRE SMOKE DAMPER
E8.00 SCALE: NONE



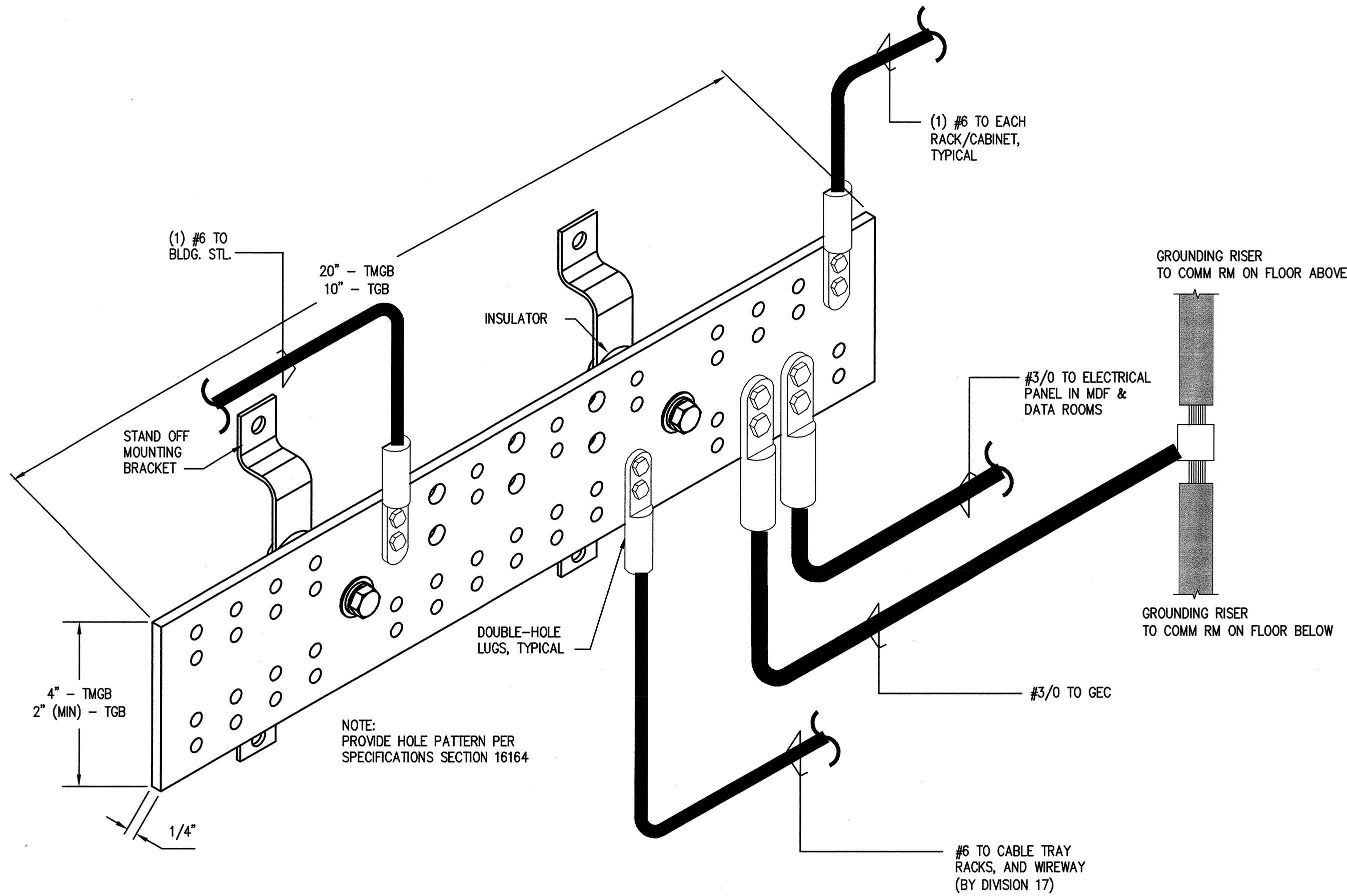
DETAIL NOTES:

- JUNCTION BOX TO BE MOUNTED BEHIND FIXTURE. CONDUCTOR AND CONDUIT SHALL NOT BE VISIBLE AS THEY TRANSITION FROM JUNCTION BOX TO FIXTURE.

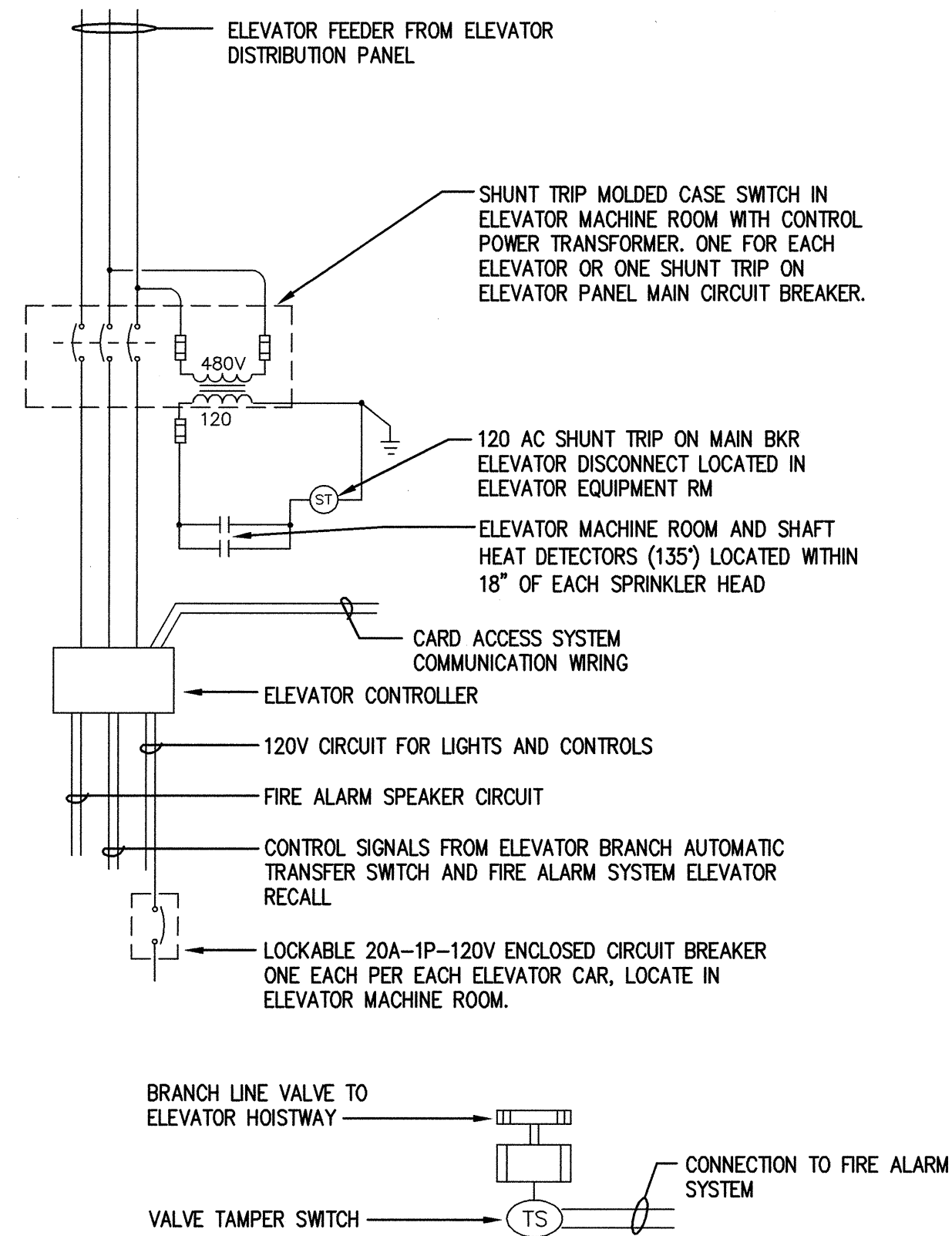
2 UNDER CABINET MOUNTING DETAIL
E8.00 SCALE: NONE



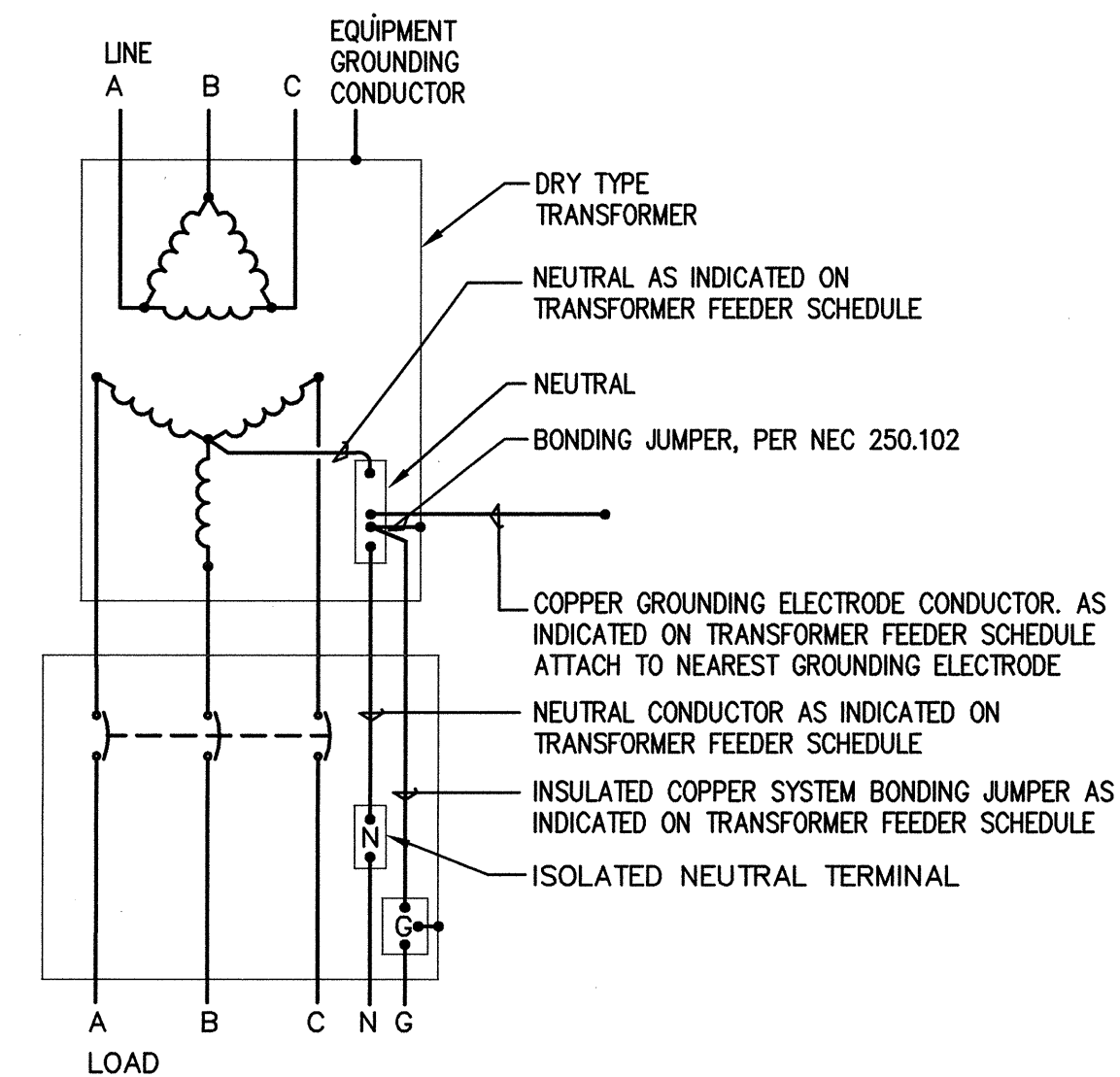
3 TELECOMMUNICATIONS RACEWAY & OUTLET BOX
E8.00 SCALE: NONE



4 TYPICAL (TMGB) AND (TGB) COMMUNICATIONS DOUBLE-LUGGED GROUND BUS BAR DETAIL
E8.00 SCALE: NONE



5 FIRE ALARM PROTECTION DETAIL
E8.00 SCALE: NONE

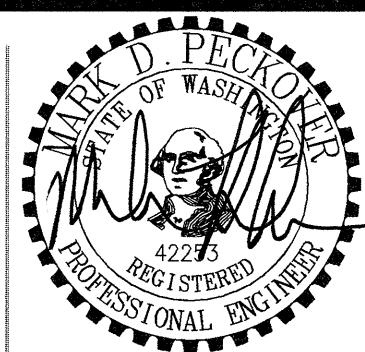


6 TRANSFORMER GROUNDING DETAIL
E8.00 SCALE: NONE

SPARLING
ELECTRICAL ENGINEERING | TECHNOLOGY CONSULTING

GIFFIN • BOLTE • JURGENS
ARCHITECTS

815 S.W. SECOND AVENUE • PORTLAND, OREGON 97204
(503) 223-0992 www.gbjarch.com FAX (503) 294-3961



MultiCare

EMERGENCY DEPARTMENT & CANCER CENTER EXPANSION

TACOMA, WASHINGTON

Date 09-26-2008
Scale NONE
Drawn By JL
Job No. 4034

ELECTRICAL
DETAILS

E8
00