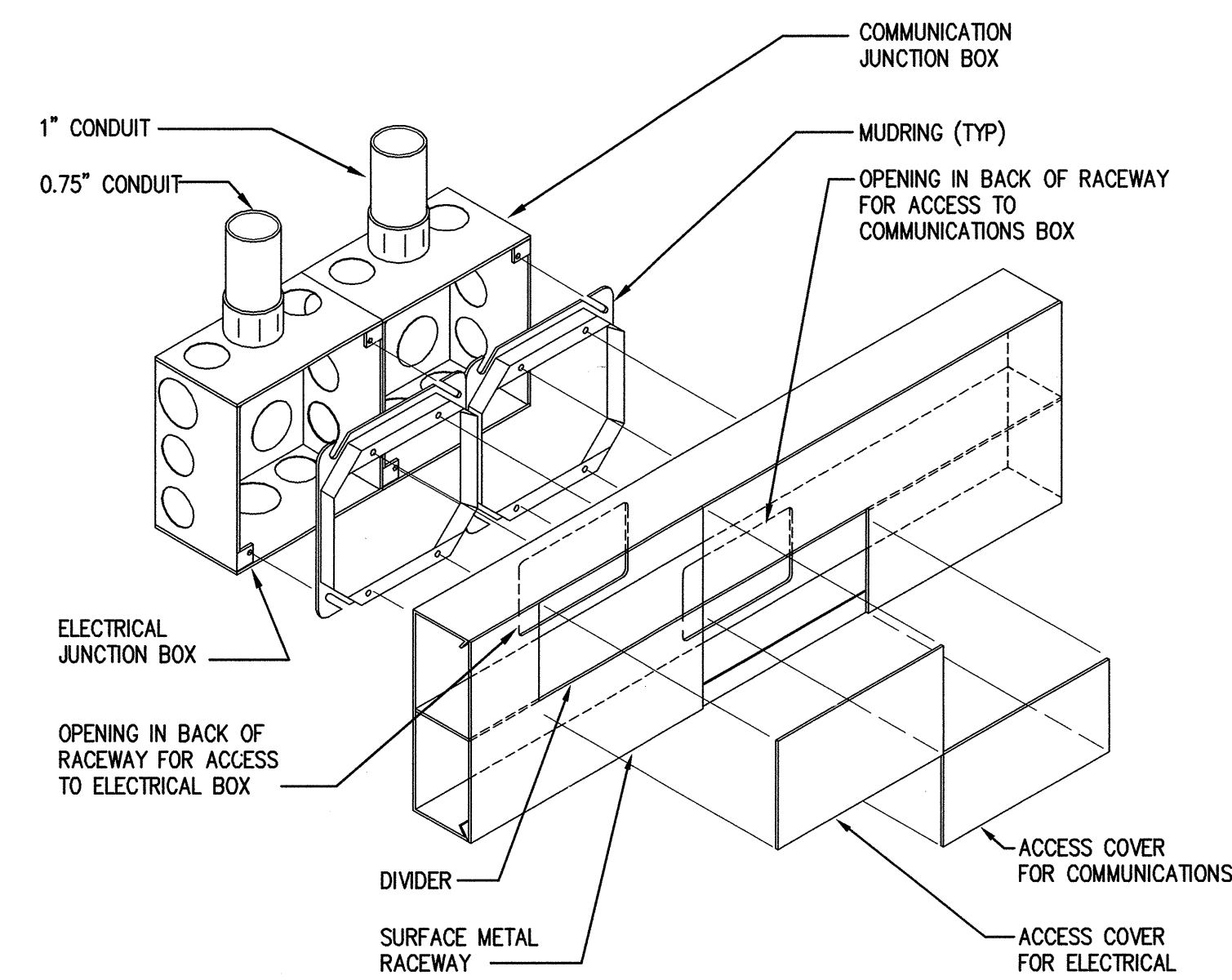


A

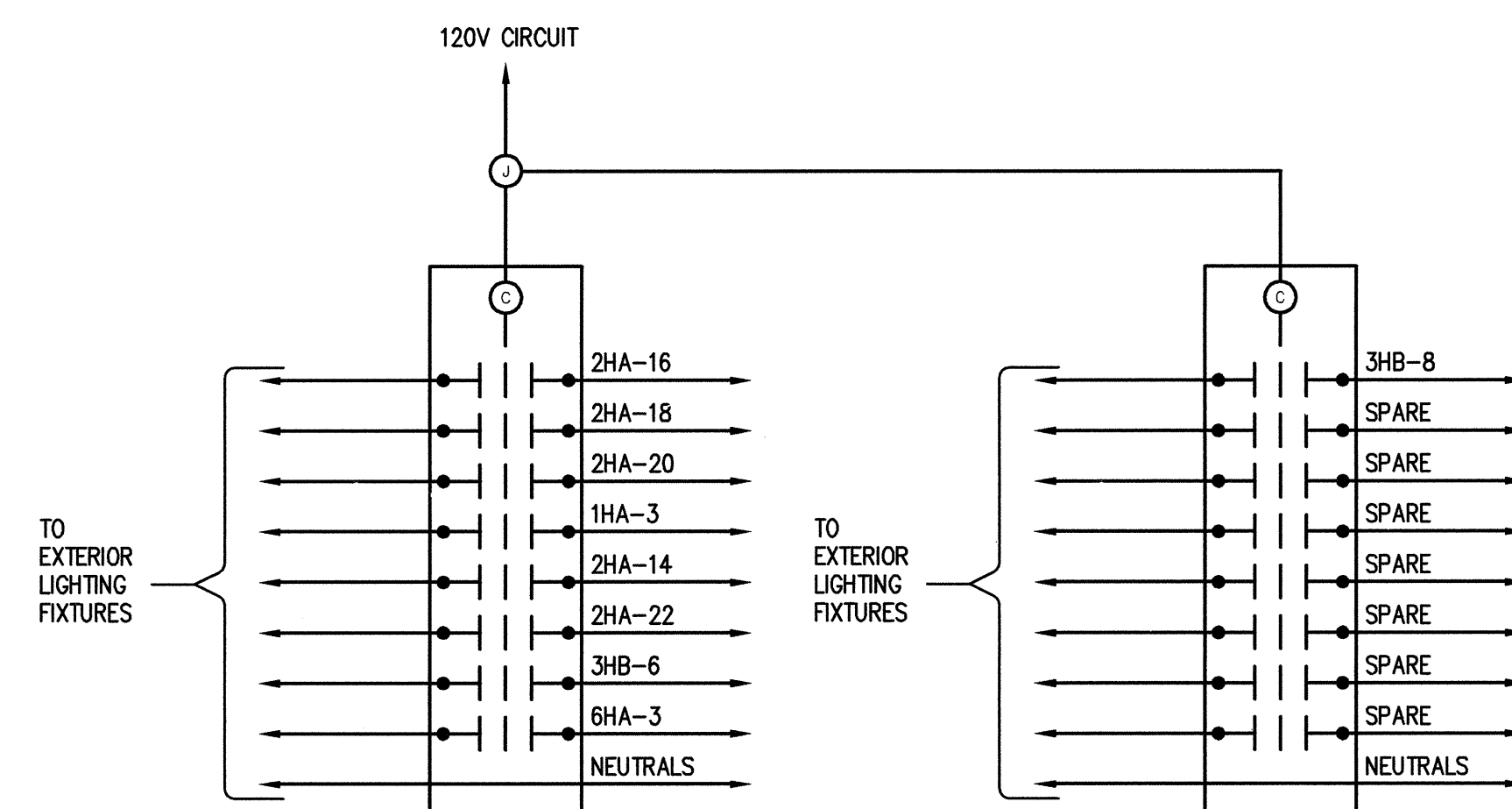
B

C

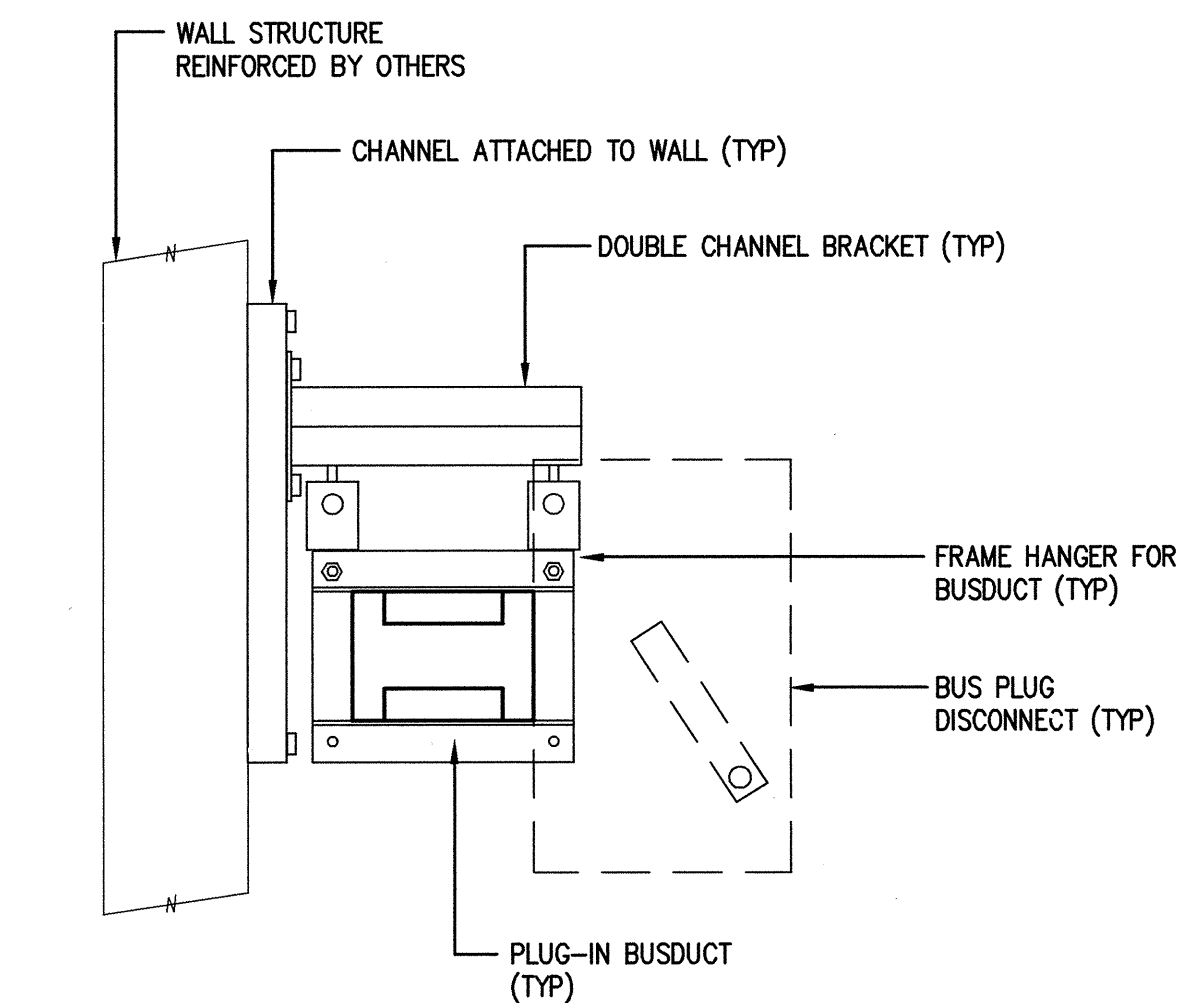
D



1 SURFACE METAL RACEWAY ENTRANCE DETAIL
E8.01 SCALE: NONE

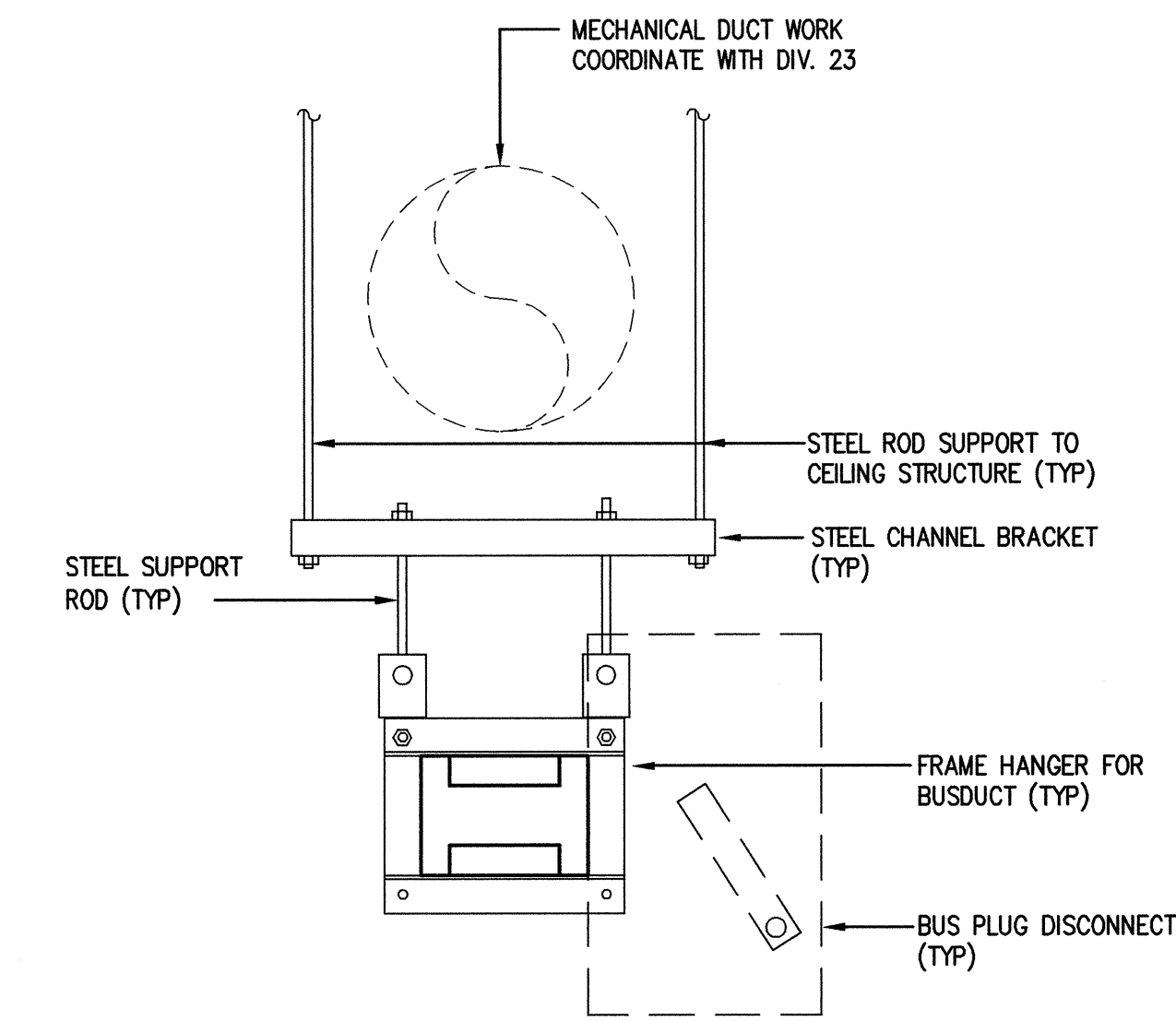


2 LIGHTING CONTROL DIAGRAM
E8.01 SCALE: NONE

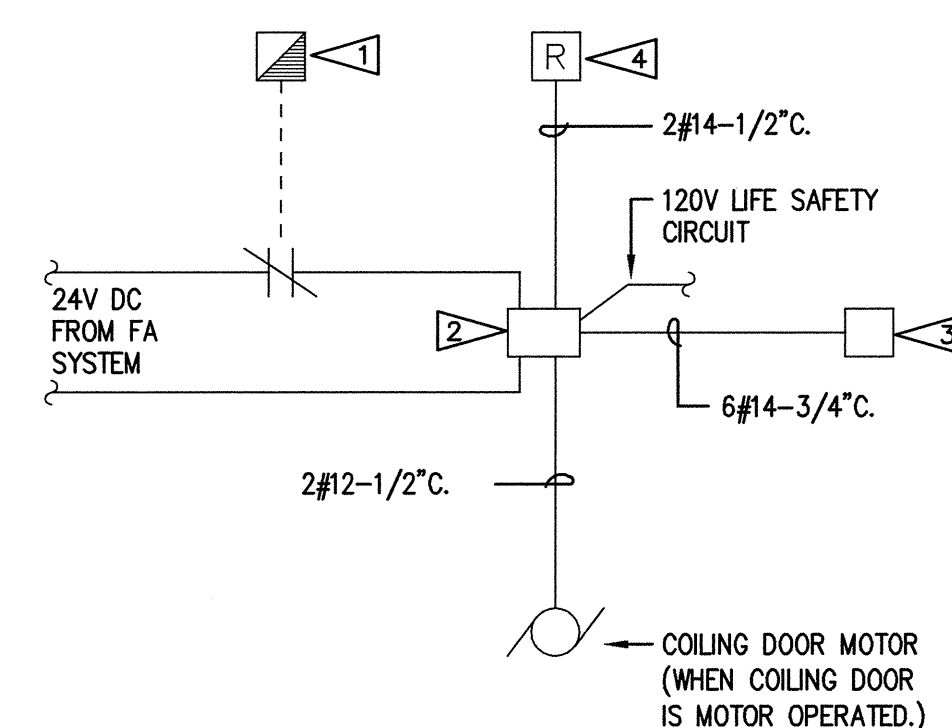


NOTE:
SEE ARCHITECTURAL ELEVATION FOR BRACKET LOCATION
AND MOUNTING HEIGHT.

3 BUSDUCT WALL MOUNTING DETAIL
E8.01 SCALE: NONE

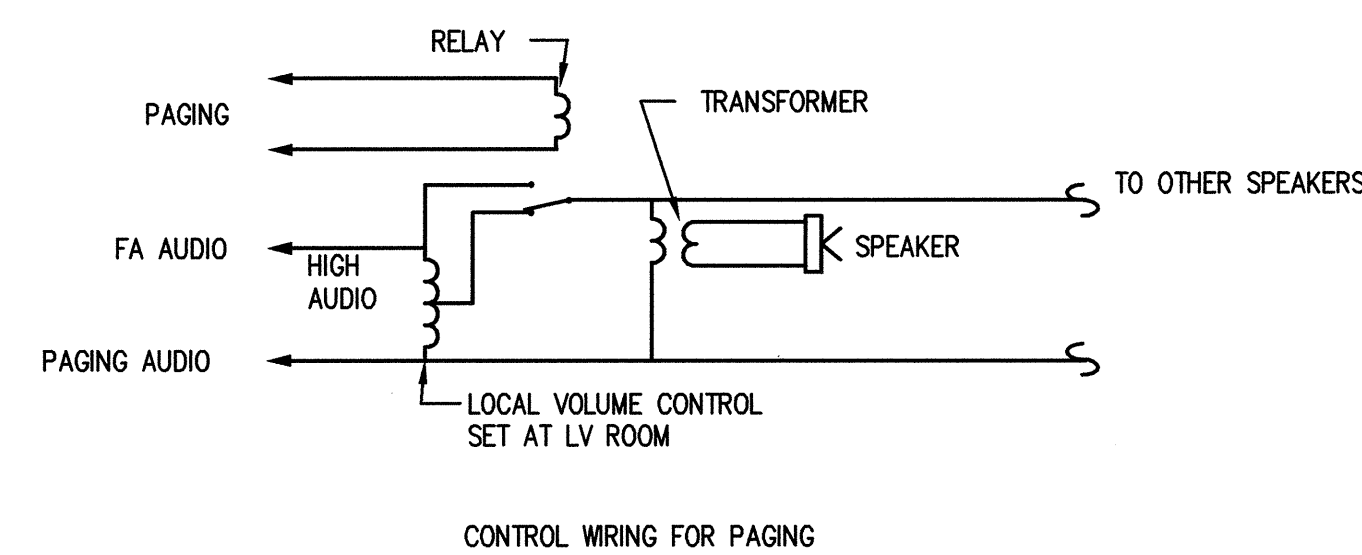


4 BUSDUCT SUPPORT DETAIL
E8.01 SCALE: NONE

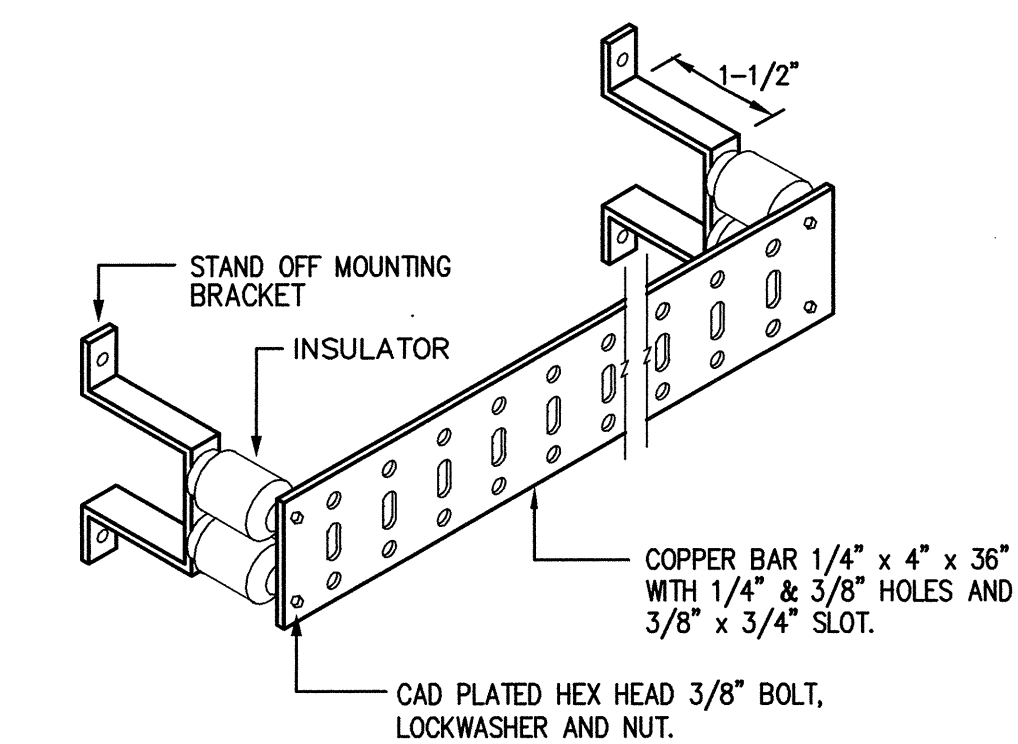


- FLAG NOTES:
- 1 SMOKE DETECTOR WITH AUXILIARY CONTROL POINT IN TRANSPONDER.
 - 2 ROLLING FIRE DOOR AUTO TEST CONTROL PANEL. COOKSON "TEST-A-FIRE". 24V DC, 62A.
 - 3 DOOR CONTROL STATION
 - 4 ROLLING DOOR RELEASE MECHANISM. COOKSON "FIRE FLY", 24V DC, .5A.

5 ROLLING DOOR RELEASE WIRING
E8.01 SCALE: NONE

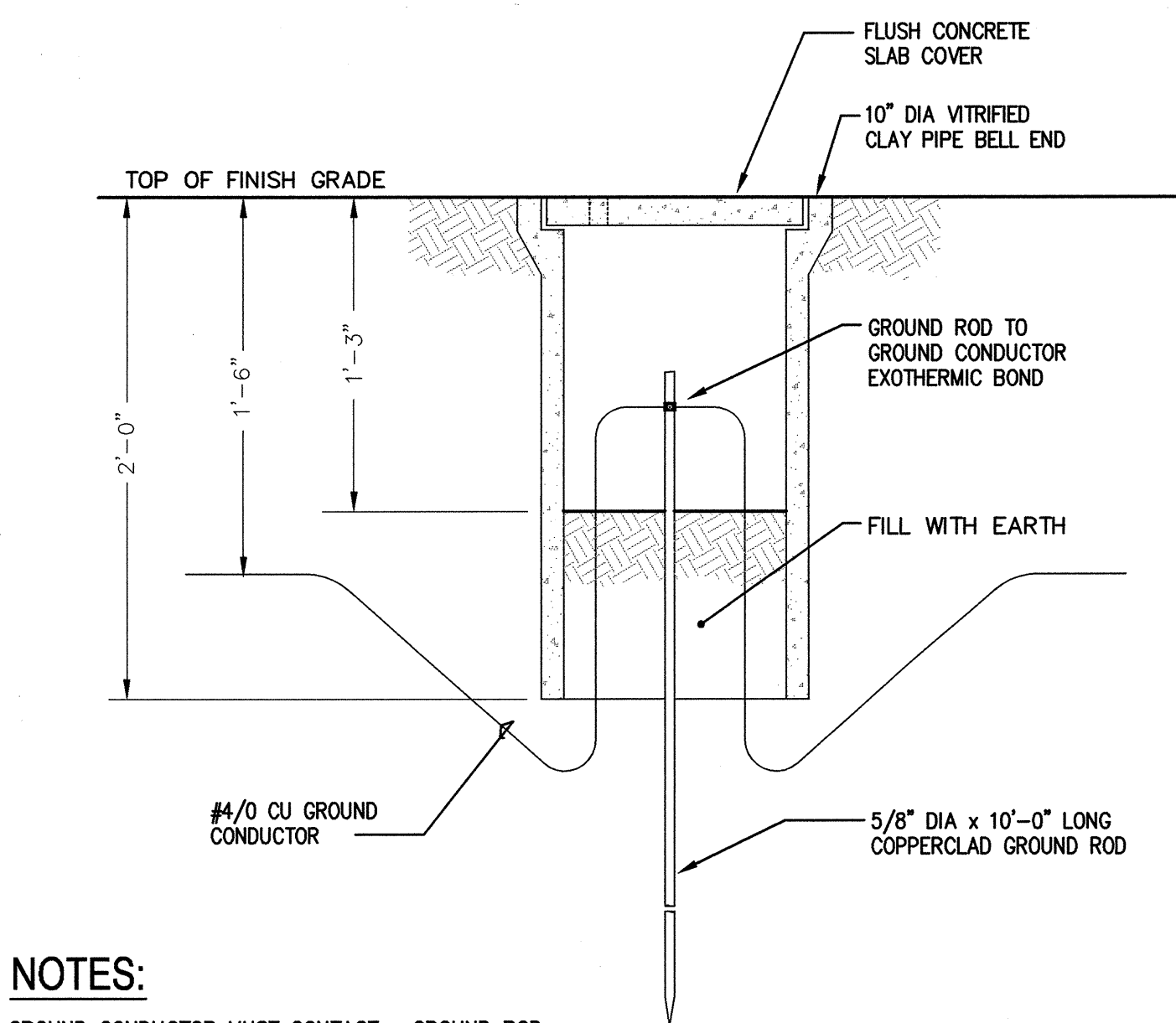


6 FIRE ALARM SPEAKER CONNECTION
E8.01 SCALE: NONE



- NOTES:
1. SPLICES SHALL BE EXOTHERMIC WELD.
 2. ASSEMBLED GROUND BARS SHALL BE FABRICATED FROM STOCKLIST AND DETAIL DRAWINGS CONTAINED WITHIN THIS EXHIBIT.
 3. BUSBAR CONNECTORS SHALL UTILIZE 2 HOLE COMPRESSION CONNECTORS.

7 MASTER GROUNDING BUSBAR DETAIL
E8.01 SCALE: NONE

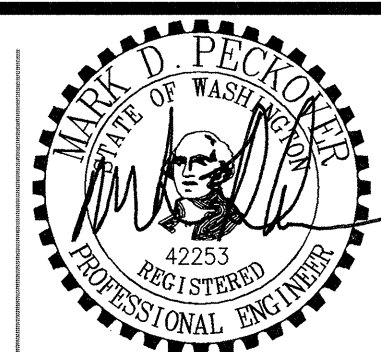


- NOTES:
1. GROUND CONDUCTOR MUST CONTACT GROUND ROD AT CONNECTOR ONLY.

8 GROUND WELL DETAIL
E8.01 SCALE: NONE

SPARLING
ELECTRICAL ENGINEERING | TECHNOLOGY CONSULTING

GIFFIN • BOLTE • JURGENS
ARCHITECTS
815 S.W. SECOND AVENUE - PORTLAND, OREGON 97204
(503) 223-0992 www.gbjarch.com FAX (503) 294-3961



MultiCare
EMERGENCY DEPARTMENT & CANCER CENTER EXPANSION
TACOMA, WASHINGTON

Date 09-26-2008
Scale NONE
Drawn By JL
Job No. 4034

**ELECTRICAL
DETAILS**

**E8
01**