

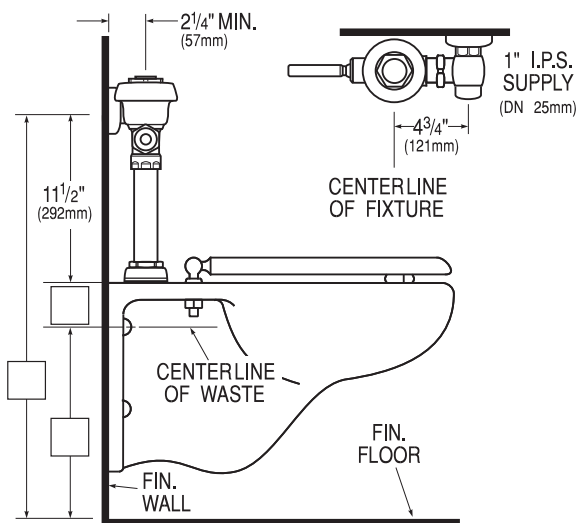
UPPERCUT™

**The Fastest Way to
Start Saving Water!**

HET
HIGH-EFFICIENCY TOILET

UP for liquid waste
Down for solid waste

P1A, P1B



Dual Flush Flushometer

WES-111

Description

Exposed Water Closet Flushometer with Dual Flush Feature, for floor mounted or wall hung top spud bowls.

Flush Cycle

WES-111 High Efficiency (Down 1.6 gpf/6.0 Lpf, Up 1.1 gpf/4.2 Lpf)

Specifications

Dual Flush, Quiet, Exposed, Diaphragm Type, Chrome Plated Closet Flushometer with the following features:

- Lifting Handle UP initiates *reduced* flush (1.1 gpf/4.2 Lpf), eliminating liquid and paper waste, saving a ½-gallon of water
- Pushing Handle DOWN initiates *full* flush (1.6 gpf/6.0 Lpf), eliminating all waste
- Reduces water volume by up to 30% when activated UPWARDS
- Antimicrobial Coating on Handle protects against germs
- PERMEX™ Synthetic Rubber Diaphragm with Dual Filtered Fixed Bypass
- Distinctive Green ADA Compliant Metal Non-Hold-Open Handle with Triple Seal Handle Packing signifies Water Conserving Device
- 1" I.P.S. Screwdriver Bak-Chek™ Angle Stop
- Free Spinning Vandal Resistant Stop Cap
- Adjustable Tailpiece
- High Back Pressure Vacuum Breaker Flush Connection with One-piece Bottom Hex Coupling Nut
- Spud Coupling and Flange for 1½" Top Spud
- Sweat Solder Adapter with Cover Tube and Cast Set Screw Wall Flange
- High Copper, Low Zinc Brass Castings for Dezincification Resistance
- Non-Hold-Open Handle, Fixed Metering Bypass and No External Volume Adjustment to Ensure Water Conservation
- Flush Accuracy Controlled by CID™ Technology
- Diaphragm, Handle Packing, Stop Seat and Vacuum Breaker molded from PERMEX™ Rubber Compound for Chloramine Resistance
- Includes two (2) adhesive backed Metal Wall Plates etched with Instructions

Valve Body, Cover, Tailpiece and Control Stop shall be in conformance with ASTM Alloy Classification for Semi-Red Brass. Valve shall be in compliance to the applicable sections of ASSE 1037.

Variations

- ☐ **TP** Trap Primer
- ☐ **YG** Extended Bumper on Angle Stop (for seat with cover)
- ☐ **YO** Bumper on Angle Stop (for open front seat without cover)

Accessories

See Accessories Section of the Sloan catalog for details on these and other Flushometer variations.

Fixtures

Consult Sloan for Sloan brand matching fixture options.



Patent Pending

This space for Architect/Engineer approval

The information contained in this document is subject to change without notice.

SLOAN®

Made in the U.S.A.

SLOAN VALVE COMPANY • 10500 SEYMOUR AVE. • FRANKLIN PARK, IL. 60131

Ph: 1-800-9-VALVE-9 or 1-847-671-4300 • Fax: 1-800-447-8329 or 1-847-671-4380

www.sloanvalve.com

Description

Exposed Urinal Flushometer for 3/4" top spud urinals.

Flush Cycle

- ☐ Model 186 Water Saver (1.5 gpf/5.7 Lpf)
- ☐ Model 186-1.0 Low Consumption (1.0 gpf/3.8 Lpf)
- ☐ Model 186-0.5 (0.5 gpf/1.9 Lpf)

Specifications

Quiet, Exposed, Diaphragm Type, Chrome Plated Urinal Flushometer with the following features:

- PERMEX™ Synthetic Rubber Diaphragm with Dual Filtered Fixed Bypass
- ADA Compliant Metal Oscillating Non-Hold-Open Handle with Triple Seal Handle Packing
- Aesthetically contoured Cover, Handle Socket and Flanges
- 3/4" I.P.S. Screwdriver Bak-Chek™ Angle Stop
- Free Spinning Vandal Resistant Stop Cap
- Adjustable Tailpiece
- High Back Pressure Vacuum Breaker Flush Connection with One-piece Bottom Hex Coupling Nut
- Spud Coupling and Flange for 3/4" Top Spud
- Sweat Solder Adapter with Cover Tube and Cast Set Screw Wall Flange
- High Copper, Low Zinc Brass Castings for Dezincification Resistance
- Non-Hold-Open Handle, Fixed Metering Bypass and No External Volume Adjustment to Ensure Water Conservation
- Flush Accuracy Controlled by CID™ Technology
- Diaphragm, Handle Packing, Stop Seat and Vacuum Breaker to be molded from PERMEX™ Rubber Compound for Chloramine Resistance

Valve Body, Cover, Tailpiece and Control Stop shall be in conformance with ASTM Alloy Classification for Semi-Red Brass. Valve shall be in compliance to the applicable sections of ASSE 1037, ANSI/ASME 112.19.6, and Military Specification V-29193.

Special Finishes

- ☐ **PB** Polished Brass (PVD Finish)
- ☐ **GP** Gold Plate (PVD Finish)
- ☐ **BN** Brushed Nickel (PVD Finish)
- ☐ **SF** Satin Chrome

See Accessories Section of the Sloan catalog for details on these and other Flushometer variations.



Listed by I.A.P.M.O.

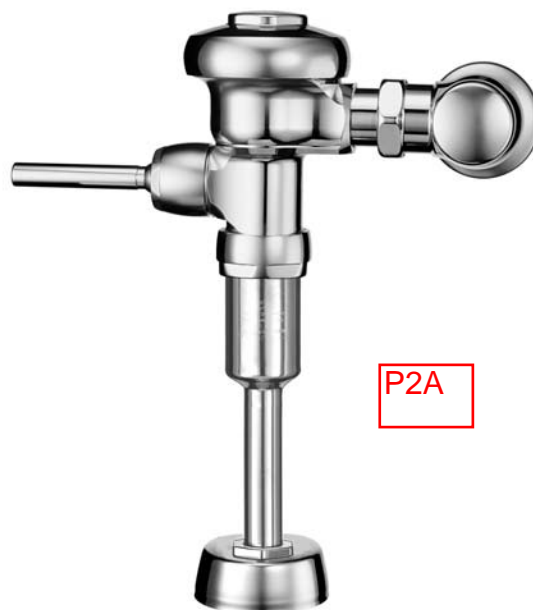
This space for Architect/Engineer approval

Job Name _____	Date _____
Model Specified _____	Quantity _____
Variations Specified _____	
Customer/Wholesaler _____	
Contractor _____	
Architect _____	

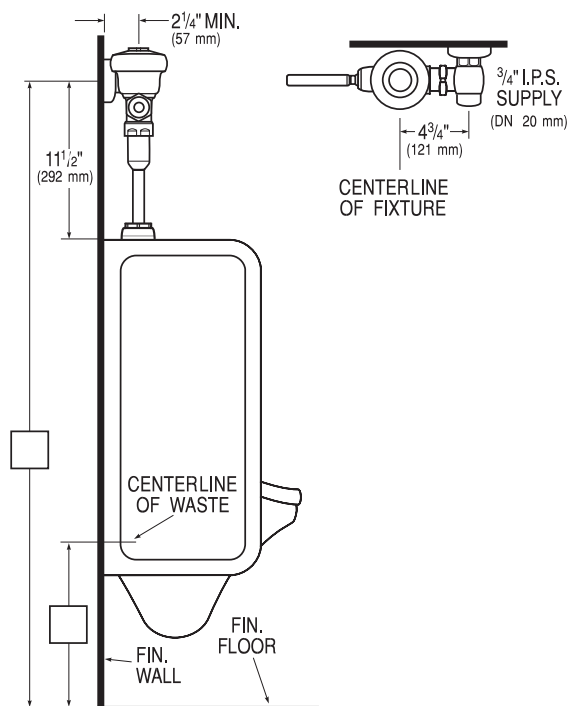
The information contained in this document is subject to change without notice.

SLOAN®

SLOAN VALVE COMPANY • 10500 SEYMOUR AVE. • FRANKLIN PARK, IL. 60131
 Ph: 1-800-9-VALVE-9 or 1-847-671-4300 • Fax: 1-800-447-8329 or 1-847-671-4380
 Made in the U.S.A. www.sloanvalve.com



P2A



Model

WEUS-1015.1311-0.5 ES-S

OPTIMA® Systems Sensor Operated HEU Flushometer and Urinal

DESCRIPTION

Complete HEU system with concealed, sensor activated, Royal® OPTIMA® urinal Flushometer and vitreous china urinal.

Flush Cycle

Model WEUS 1015.1311-0.5 ES-S (0.5 gpf/1.9 Lpf)



Meets the American Disabilities Guidelines and ANSI A117.1 requirements when installed according to these requirements.



NOTE: Plumbing System Requirements

✓ Minimum **Flowing** Pressure: 25 PSI

SPECIFICATIONS

Quiet, concealed, sensor operated diaphragm type, rough brass urinal Flushometer and vitreous china urinal with the following features:

Flushometer and OPTIMA® ES-S Unit

- PERMEX® Synthetic Rubber Diaphragm with Dual Filtered Fixed Bypass
- OPTIMA® EL-1500 Self-Adaptive Infrared Sensor with Indicator Light
- Non-Hold-Open Integral Solenoid Operator
- Die Cast Sensor Cover Plate with no visible Fasteners (for 2-gang Electrical Box)
- 3/4" I.P.S. Screwdriver Bak-Chek® Angle Stop
- Free Spinning Vandal Resistant Stop Cap
- Adjustable Tailpiece
- High Back Pressure Vacuum Breaker Flush Connection and Spud Coupling for 3/4" Concealed Back Spud
- Sweat Solder Adapter
- High copper, low zinc brass castings for dezincification resistance
- Non-Hold-Open Integral Solenoid Operator, Fixed Metering Bypass and no external volume adjustment to ensure water conservation
- Flush accuracy controlled by CID® technology
- Diaphragm, Stop Seat and Vacuum Breaker to be molded from PERMEX® rubber compound for chloramine resistance
- Valve Body, Tailpiece and Control Stop shall be in conformance with ASTM Alloy Classification for Semi-Red Brass. Valve shall be in compliance with the applicable sections of ASSE 1037, ANSI/ASME A112.19.2.

Urinal

- Vitreous china
- Wall mounted
- Washdown flushing action
- 3/4" rear spud inlet
- 100% factory flush tested
- Integral flushing rim
- All mounting hardware included
- Carrier not included
- Compatible with: Jay R. Smith Carrier 0636 or 0637



These products when installed as a combination as shown, meet the "Buy American Act" requirements

FEATURES

Automatic

Sloan OPTIMA® equipped Flushometers provide the ultimate in sanitary protection and automatic operation. There are no handles to trip or buttons to push. The Flushometer operates by means of an infrared sensor that adapts to its surroundings. Once the user enters the sensor's effective range and then steps away, the Flushometer Solenoid initiates the flushing cycle to flush the fixture.

Hygienic

User makes no physical contact with the Flushometer surface. Helps control the spread of infectious diseases. 24-hour Sentinel Flush keeps fixture fresh during periods of nonuse.

Economical

Automatic operation and a low flush volume provide water savings over other flushing devices. Reduces maintenance and operation costs.

Practical

Solid state electronic circuitry assures years of dependable, trouble-free operation. The operational components of the Flushometer are identical to a handle operated Royal® Flushometer, proven by more than 100 years of experience.

Warranty

3 year (limited)

Made In The
USA



Sloan Valve Company is buying renewable energy certificates to meet 100% of the company's purchased electricity use at its Franklin Park, Illinois facility.

SLOAN®

Sloan Valve Company
10500 Seymour Avenue
Franklin Park, IL 60131
Phone: 1-800-9-VALVE-9 (982-5839)
or 1-847-671-4300
Fax: 1-800-447-8329 or 1-847-671-4380
www.sloanvalve.com

Copyright © 2009 Sloan Valve Company
Printed in the U.S.A. Rev. 0 (08/09)

This space for Architect/Engineer approval	
Job Name	Date
Model Specified	Quantity
Variations Specified	
Customer/Wholesaler	
Contractor	
Architect	

DESCRIPTION

Complete HEU system with concealed, sensor activated, Royal® OPTIMA® urinal Flushometer and vitreous china urinal.

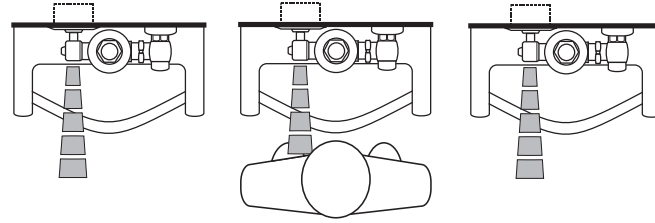
Flush Cycle

Model WEUS 1015.1311-0.5 ES-S (0.5 gpf/1.9 Lpf)

ELECTRICAL SPECIFICATIONS

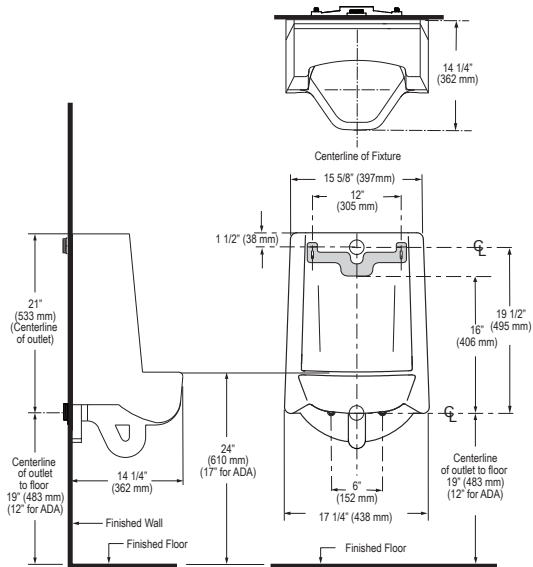
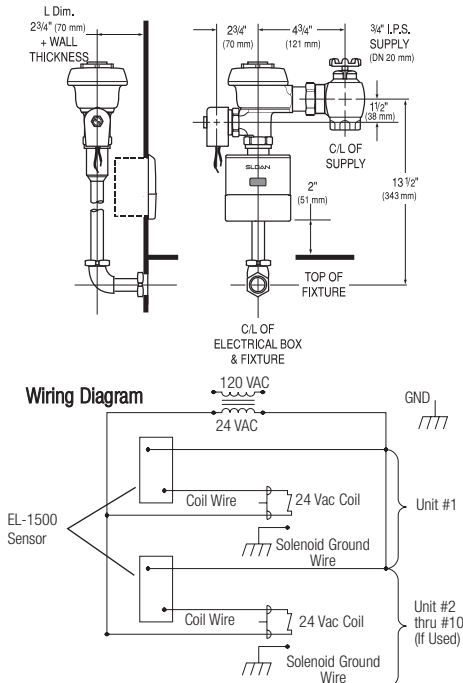
- **Control Circuit**
 - Solid State
 - 24 VAC Input
 - 24 VAC Output
 - 8 Second Arming Delay
 - 24 Hour Sentinel Flush
- **OPTIMA® Sensor Range**
 - Nominal 15" – 30" (381 mm – 762 mm)
 - Self-adaptive Window $\pm 8"$ (203 mm)
- **Solenoid Operator**
 - 24 VAC, 50/60 Hz
- **Transformer Accessories**
 - EL-154 Transformer (120 VAC/24 VAC 50 VA)
 - EL-342 Transformer (240 VAC/24 VAC 50 VA)

OPERATION



1. A continuous, invisible light beam is emitted from the OPTIMA® Sensor.
2. As the user enters the beam's effective range (15" to 30") the beam is reflected into the OPTIMA® Scanner Window and transformed into a low voltage electrical circuit. Once activated, the Output Circuit continues in a "hold" mode for as long as the user remains within the effective range of the sensor.
3. When the user steps away from the OPTIMA® Sensor, the circuit immediately initiates an electrical "one-time" signal that operates the Solenoid. This initiates the flushing cycle to flush the fixture. The Circuit then automatically resets and is ready for the next user.

DIMENSIONS/ROUGH-IN



4" (102 mm) sq. x 2-1/2" (64 mm) deep outlet box – Appleton Elect. #4sd1 or equal (by contractor)

SLOAN

Sloan Valve Company
10500 Seymour Avenue
Franklin Park, IL 60131
Phone: 1-800-9-VALVE-9 (982-5839)
or 1-847-671-4300
Fax: 1-800-447-8329 or 1-847-671-4380
www.sloanvalve.com

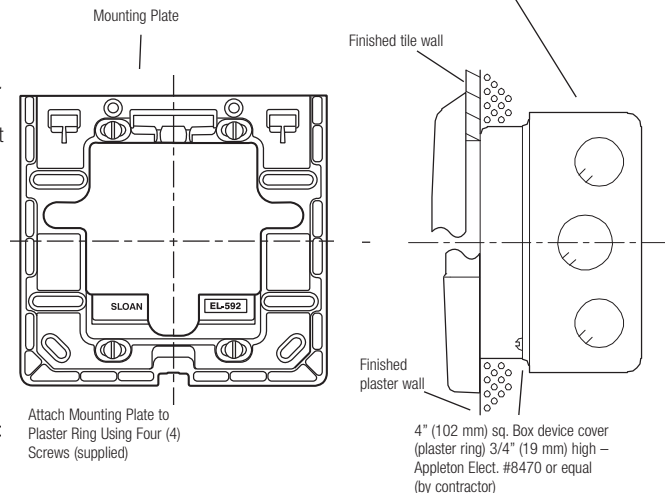
Copyright © 2009 Sloan Valve Company
Printed in the U.S.A. Rev. 0 (08/09)

Electrical Box Installation

Sensor location and positioning is critical.

Failure to properly position the electrical boxes to the plumbing rough-in will result in improper installation and impair product performance. All tradesmen (plumbers, electricians, tile setters, etc.) involved with the installation of this product must coordinate their work to assure proper product installation. Installation template furnished with flushometer.

To ensure a perfect rough-in, Sloan recommends the use of the EL-518-A Flushometer electrical box positioning and support kit. Specify and order the EL-518-A kit separately. Consult factory for installation details.



► **Description**

Wall hung, wall outlet, Waterfree Vitreous China Urinal.

► **Features**

- Touch-free operation
- Uses no water
- Mechanical-free design
- Patented, Sealed Locking Cartridge
- Smooth, non-porous surfaces

► **Benefits**

- Improved hygiene and safety
- Reduced water and sewer costs
- Water supply piping not required
- Odor-free
- Vandal resistant
- Minimal care and easy cleaning

► **Specifications**

Wall hung, wall outlet, waterfree, Vitreous China Urinal with the following features:

- Vitreous China Fixture
- Cartridge Housing (H-1 Mod. 3)
- Cartridge Kit † — Engineered to last for an average of 7000 uses
- One Piece Wall Bracket with Anchors Included
- Uni-coupler (for new and retrofit installations)
- Drain Line Test Cap

† Additional Cartridges sold separately

► **Colors**

☐ Standard White

Consult factory for optional colors.

► **Cartridge Filter**



Patented, Sealed Cartridge uses a Biodegradable Sealant Liquid to control odors.

The patented Cartridge is engineered to last for an average of 7000 uses and to receive waste through drain holes. Waste passes through an immiscible layer of biodegradable Sealant, continues through a Trap System, and flows over a Baffle to prevent the loss of Sealant. A Discharge Tube in the housing directs the flow of waste into the building drain system. The Cartridge is designed as a replaceable component when its function has been exhausted.



Featuring Falcon Waterfree Technology



**The New Sloan Waterfree Urinal —
Preserves our Natural Resources and
saves costs**

Sloan Waterfree Urinals reduce water and sewer costs, maintenance and repair bills, and create more hygienic, odor-free restrooms. A Patented, Sealed Cartridge eliminates the need for water, typically conserving 40,000 gallons per unit per year. Installing Waterfree Urinals along with other Sloan Conservation Products ensures meaningful water savings. In addition, Sloan Waterfree Urinals do not require costly supply piping to fixture.

ANSI/ASME A112.19.19-2006



MEETS THE AMERICAN DISABILITIES ACT
GUIDELINES AND ANSI A117.1
ACCESSIBLE AND USABLE BUILDINGS
AND FACILITIES - CHECK LOCAL CODES.



® Certified

This space for Architect/Engineer approval

Job Name _____ Date _____

Model Specified _____ Quantity _____

Variations Specified _____

Customer/Wholesaler _____

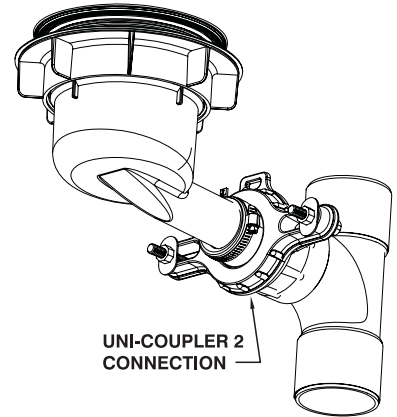
Contractor _____

Architect _____

- **Description**
Wall hung, wall outlet, Waterfree Vitreous China Urinal.
- **Dimensions**
19-5/8" (498 mm) x 13" (330 mm) x 14" (356 mm)
- **Approximate Weight**
27 lbs. (12.3 kg)
- **Mounting For ADA Compliance**
For lip height of 17" (432 mm), distance from finished floor to drain centerline must be 9-3/4" (248 mm).
- **Drain Connection and Material**
Installs on standard 2-inch drain connections with spud flange or threaded nipple. Suitable DWV materials include cast iron, galvanized steel, ABS and PVC. Waterfree urinals are not recommended for installation with copper DWV due to copper's susceptibility to corrosion.

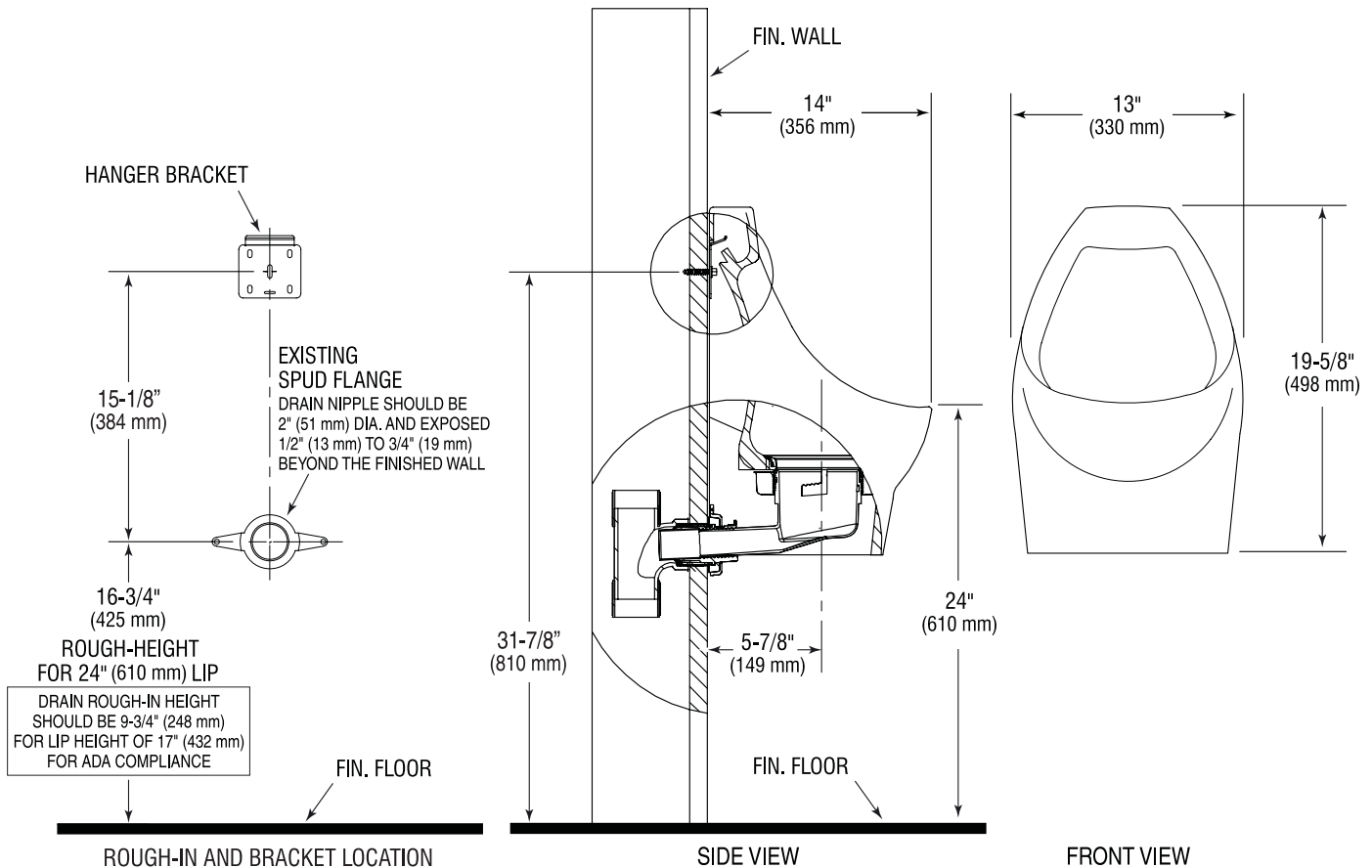
Uni-Coupler

The Uni-coupler connects the urinal housing to the building drain system and conforms to NSF 14 for plastic pipes and fittings. It is designed for use in both new and retrofit applications and offers a variety of configurations to meet most existing drain openings.



UNI-COUPLER 2
CONNECTION

ROUGH-IN



MAINTENANCE AND CLEANING

- Perform cleaning once a day, or as needed
- Remove any litter in the bowl and clear cartridge drain slots
- Use mild disinfectant cleaner on a cloth to wipe the bowl
- DO NOT use aggressive/concentrated detergents or any other chemicals
- DO NOT dispose of water into the urinal

SLOAN VALVE COMPANY • 10500 SEYMOUR AVENUE • FRANKLIN PARK, IL 60131

Phone: 1-800-982-5839 or 1-847-671-4300 • Fax: 1-800-447-8329 or 1-847-671-4380 • www.sloanvalve.com

895-317GN2FCCP

Deck Mounted 4" Centerset Faucet

PRODUCT TYPE

Deck mounted 4" centerset faucet

FEATURES & SPECIFICATIONS

- Polished chrome plated finish
- Solid brass body construction
- 5 1/4" C-C Rigid/Swing field convertible gooseneck spout, catalog #GN2FC
- 1.6 GPM laminar flow control located at spout inlet
- 4" Wristblade metal handles with eight point tapered broach and secured color coded index buttons, catalog #317
- Quatern™ quarter-turn renewable compression cartridge that closes with water pressure with tapered square broach to facilitate handle removal, catalog #1-100XT and #1-099XT
- 1/2" NPSM supply inlets with coupling nuts for 3/8" or 1/2" flexible risers
- Mounting hardware included

PERFORMANCE SPECIFICATION

- Rated Operating Pressure: 20-125 PSI
- Rated Operating Temperature: 40-140° F

WARRANTY

- Lifetime Limited Faucet Warranty
- 5-Year Limited Cartridge Warranty
- 1-Year Limited Finish Warranty

COMPLIANT To

- ASME A112.18.1M
- CSA B125
- NSF 61, Sec. 9
- ADA

Job Name _____
Item Number _____
Section/Tag _____
Model Specified _____
Architect _____
Engineer _____
Contractor _____
☐ Submitted as Shown ☐ Submitted with Variations
Date _____



895-317GN2FCCP

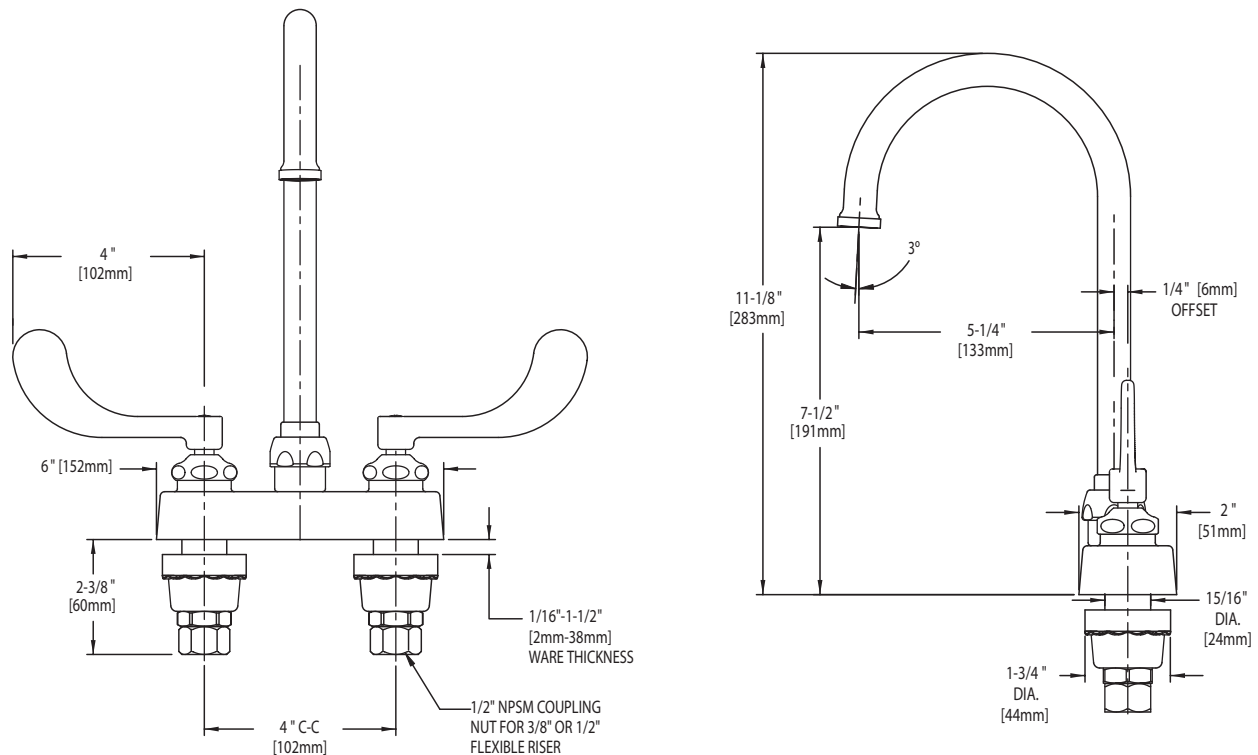
Deck Mounted 4" Centerset Faucet

**CHICAGO
FAUCETS**

a Geberit company

ARCHITECT/ENGINEER SPECIFICATION

Chicago Faucets No. 895-317GN2FCCP, Polished chrome plated solid brass construction with integral shanks. 5 1/4" C-C rigid/swing field convertible gooseneck spout. 1.6 GPM laminar flow control. 4" Wristblade handles with eight point tapered broach and secured color coded index buttons. Quatum™ quarter-turn renewable compression cartridge designed to close with water pressure with square tapered broach feature to help facilitate handle removal. Inlet shanks contain standard 1/2" NPSM threaded inlets with coupling nuts for connection to 3/8" or 1/2" standard flexible risers. Mounting hardware included. This product meets ADA requirements and is tested and certified to industry standards: ASME A112.18.1, NSF 61, Sec. 9 and CSA B125.



OPERATION AND MAINTENANCE

Installation should be in accordance with local plumbing codes. Flush all pipes thoroughly before installation. After installation, remove spout outlet or flow control and flush faucet thoroughly to clear any debris. Care should be taken when cleaning this product. Do not use abrasive cleaners, chemicals or solvents as they can result in surface damage. Use mild soap and warm water for cleaning and protecting the life of Chicago Faucet products. For specific operation and maintenance refer to the installation instructions and repair parts documents that are located at www.chicagofaucets.com.

Chicago Faucets, member of the Geberit Group, is the leading brand of commercial faucets and fittings in the United States, offering a complete range of products for schools, laboratories, hospitals, office buildings, food service, airports and sport facilities. Call 1.800.TECTRUE or 1.847.803.5000 Option 1 for installation or other technical assistance.



2100 South Clearwater Drive
Des Plaines, IL 60018
P: 847/803-5000
F: 847/803-5454
Technical: 800/TEC-TRUE
www.chicagofaucets.com

116.103.21.1

HyTronic™ Gooseneck Deck Mounted Single Hole Faucet - AC

PRODUCT TYPE

Deck mounted single hole faucet

FEATURES & SPECIFICATIONS

- Polished chrome plated finish
- Solid brass internal waterway construction
- Efficient dual beam infrared sensors
- 5 3/8" C-C Rigid/Swing field convertible gooseneck spout, catalog #GN2H8
- .5 GPM (1.9 L/min) vandal resistant spray outlet, catalog #E2805
- Includes optional 2.2 GPM (8.3 L/min) pressure compensating aerator insert
- Multiple field adjustable modes and ranges
- Single supply for tempered water
- Above deck hermetically sealed electronics
- Above deck water-tight solenoid with filter screen
- Inlet supply check valve
- Free spinning flexible braided stainless steel supply hose with filter screen
- Geberit Commander™ software compatible
- Mounting hardware included
- 12 volt AC transformer required (order separately)

OPTIONAL ACCESSORIES

- 4" C-C Trim cover plate
- 8" C-C Trim cover plate
- Copper inlet tube
- Thermostatic mixing valve
- Single use plug-in transformer
- Multi-use hardwire transformer

PERFORMANCE SPECIFICATION

- Rated Operating Pressure: 20-125 PSI
- Rated Operating Temperature: 40-140° F

WARRANTY

- 5-Year Limited Mechanicals Warranty
- 3-Year Limited Electronics and Solenoid Warranty
- 1-Year Limited Finish Warranty

COMPLIANT TO

- ASME A112.18.1M
- CSA B125
- ADA

Job Name	_____
Item Number	_____
Section/Tag	_____
Model Specified	_____
Architect	_____
Engineer	_____
Contractor	_____
<input type="checkbox"/> Submitted as Shown	<input type="checkbox"/> Submitted with Variations
Date	_____



116.103.21.1

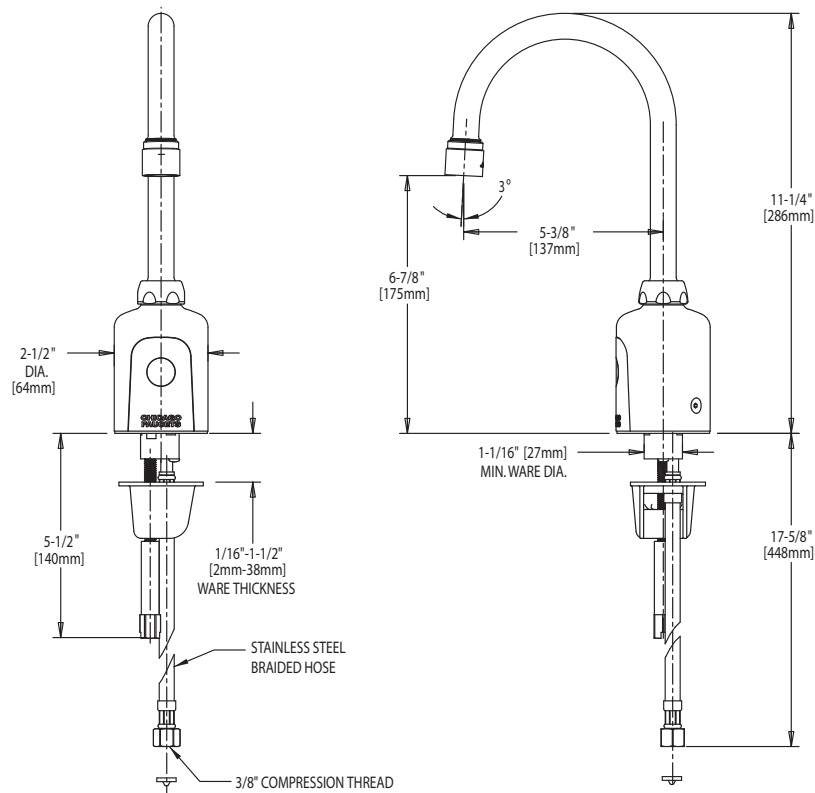
HyTronic™ Gooseneck Deck Mounted Single Hole Faucet - AC



a Geberit company

ARCHITECT/ENGINEER SPECIFICATION

Chicago Faucets No. 116.103.21.1, Polished chrome plated solid brass construction. 5 3/8" C-C rigid/swing field convertible gooseneck spout with .5 GPM vandal resistant spray outlet. Multiple field adjustable modes and ranges. Single supply for tempered water. Above deck hermetically sealed electronics module and solenoid with filter screen. Inlet supply check valve. Free spinning flexible stainless steel supply hose with filter screen. Mounting hardware included. 12 volt AC transformer required (order separately). This product meets ADA requirements and is tested and certified to industry standards: ASME A112.18.1 and CSA B125.



OPERATION AND MAINTENANCE

Installation should be in accordance with local plumbing codes. Flush all pipes thoroughly before installation. After installation, remove spout outlet or flow control and flush faucet thoroughly to clear any debris. Care should be taken when cleaning this product. Do not use abrasive cleaners, chemicals or solvents as they can result in surface damage. Use mild soap and warm water for cleaning and protecting the life of Chicago Faucet products. For specific operation and maintenance refer to the installation instructions and repair parts documents that are located at www.chicagofaucets.com.

Chicago Faucets, member of the Geberit Group, is the leading brand of commercial faucets and fittings in the United States, offering a complete range of products for schools, laboratories, hospitals, office buildings, food service, airports and sport facilities. Call 1.800.TECTRUE or 1.847.803.5000 Option 1 for installation or other technical assistance.



2100 South Clearwater Drive
Des Plaines, IL 60018
P: 847/803-5000
F: 847/803-5454
Technical: 800/TEC-TRUE
www.chicagofaucets.com

786-GN2FCXKCP

Deck Mounted 8" Widespread Faucet

PRODUCT TYPE

Deck mounted 8" widespread faucet

FEATURES & SPECIFICATIONS

- Polished chrome plated finish
- Solid brass body construction
- 8" Rigid valve body centers
- 5 1/4" C-C Rigid/Swing field convertible gooseneck spout with plain end outlet, catalog #GN2FC
- 1.6 GPM (6.1 L/min) internal flow control located at spout inlet
- 4" Wristblade metal handles with eight point broach and secured color coded index buttons, catalog #317
- Ceramic disc cartridge with tapered square broach to facilitate handle removal, catalog #377-XKLH and #377-XKRH
- 1/2" NPSM supply inlets with coupling nuts for 3/8" or 1/2" flexible risers
- Mounting hardware included

PERFORMANCE SPECIFICATION

- Rated Operating Pressure: 20-125 PSI
- Rated Operating Temperature: 40-140° F

WARRANTY

- Lifetime Limited Faucet Warranty
- 5-Year Limited Cartridge Warranty
- 1-Year Limited Finish Warranty

COMPLIANT TO

- ASME A112.18.1
- CSA B125
- NSF 61, Sec. 9
- ADA

Job Name _____
Item Number _____
Section/Tag _____
Model Specified _____
Architect _____
Engineer _____
Contractor _____
☐ Submitted as Shown ☐ Submitted with Variations
Date _____



786-GN2FCXKCP

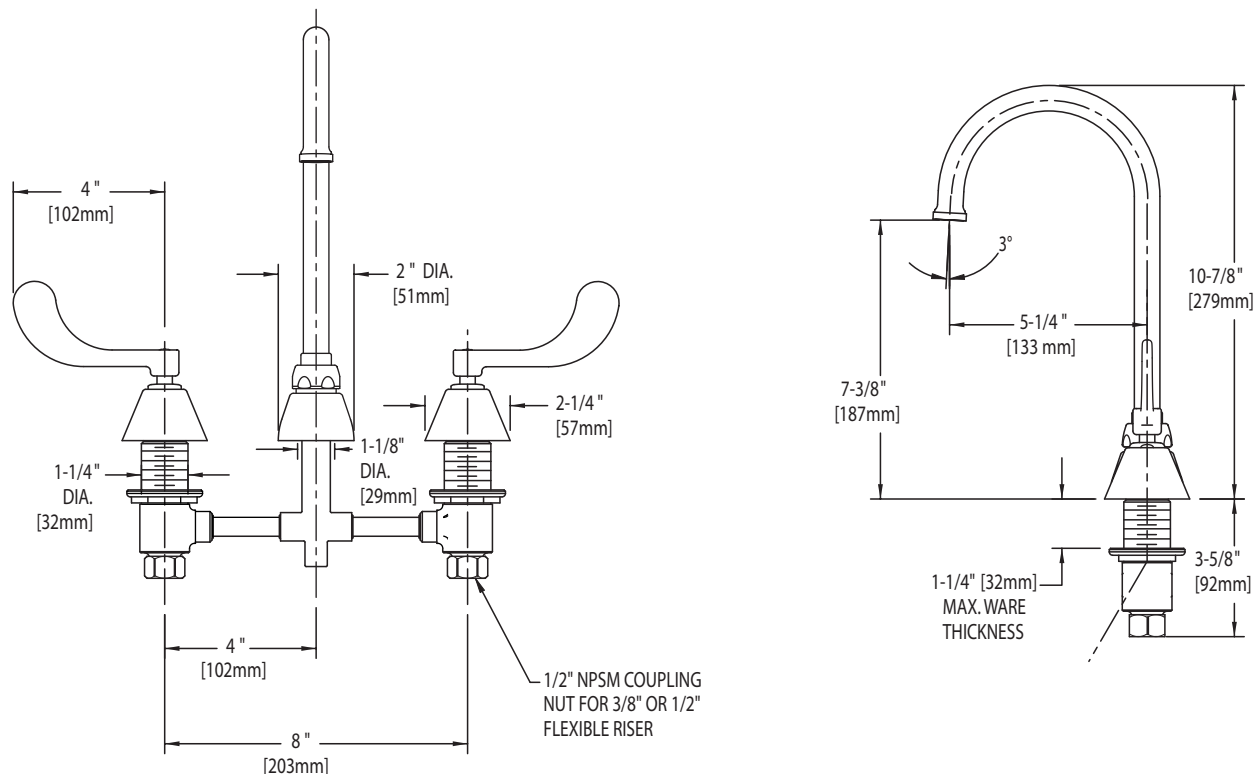
Deck Mounted 8" Widespread Faucet

**CHICAGO
FAUCETS**

a Geberit company

ARCHITECT/ENGINEER SPECIFICATION

Chicago Faucets No. 786-GN2FCXKCP, Polished chrome plated solid brass body and spout. 5 1/4" C-C rigid/swing field convertible gooseneck spout, plain end outlet. 1.6 GPM (6.1 L/min) internal flow control at spout inlet. 4" wristblade handles with eight point tapered broach and secured color coded index buttons. Ceramic disc cartridge with square tapered broach feature to help facilitate handle removal. 8" rigid valve body centers with 1/2" NPSM threaded inlets with coupling nuts for connection to 3/8" or 1/2" standard flexible risers. Mounting hardware included. This product meets ADA requirements and is tested and certified to industry standards: ASME A112.18.1, NSF 61, Sec. 9 and CSA B125.



OPERATION AND MAINTENANCE

Installation should be in accordance with local plumbing codes. Flush all pipes thoroughly before installation. After installation, remove spout outlet or flow control and flush faucet thoroughly to clear any debris. Care should be taken when cleaning this product. Do not use abrasive cleaners, chemicals or solvents as they can result in surface damage. Use mild soap and warm water for cleaning and protecting the life of Chicago Faucet products. For specific operation and maintenance refer to the installation instructions and repair parts documents that are located at www.chicagofaucets.com.

Chicago Faucets, member of the Geberit Group, is the leading brand of commercial faucets and fittings in the United States, offering a complete range of products for schools, laboratories, hospitals, office buildings, food service, airports and sport facilities. Call 1.800.TECTRUE or 1.847.803.5000 Option 1 for installation or other technical assistance.



2100 South Clearwater Drive
Des Plaines, IL 60018
P: 847/803-5000
F: 847/803-5454
Technical: 800/TEC-TRUE
www.chicagofaucets.com

786-GN2FCCP

Deck Mounted 8" Widespread Faucet

PRODUCT TYPE

Deck mounted 8" widespread faucet

FEATURES & SPECIFICATIONS

- Polished chrome plated finish
- Solid brass body construction
- 8" Rigid valve body centers
- 5 1/4" C-C Rigid/Swing field convertible gooseneck spout with plain end outlet, catalog #GN2FC
- 1.6 GPM (6.1 L/min) internal flow control located at spout inlet
- 4" Wristblade metal handles with eight point broach and secured color coded index buttons, catalog #317
- Quatern™ quarter-turn renewable compression cartridge that closes with water pressure with tapered square broach to facilitate handle removal, catalog #377-XTLH and #377-XTRH
- 1/2" NPSM supply inlets with coupling nuts for 3/8" or 1/2" flexible risers
- Mounting hardware included

PERFORMANCE SPECIFICATION

- Rated Operating Pressure: 20-125 PSI
- Rated Operating Temperature: 40-140° F

WARRANTY

- Lifetime Limited Faucet Warranty
- 5-Year Limited Cartridge Warranty
- 1-Year Limited Finish Warranty

COMPLIANT TO

- ASME A112.18.1
- CSA B125
- NSF 61, Sec. 9
- ADA

Job Name _____
Item Number _____
Section/Tag _____
Model Specified _____
Architect _____
Engineer _____
Contractor _____
☐ Submitted as Shown ☐ Submitted with Variations
Date _____



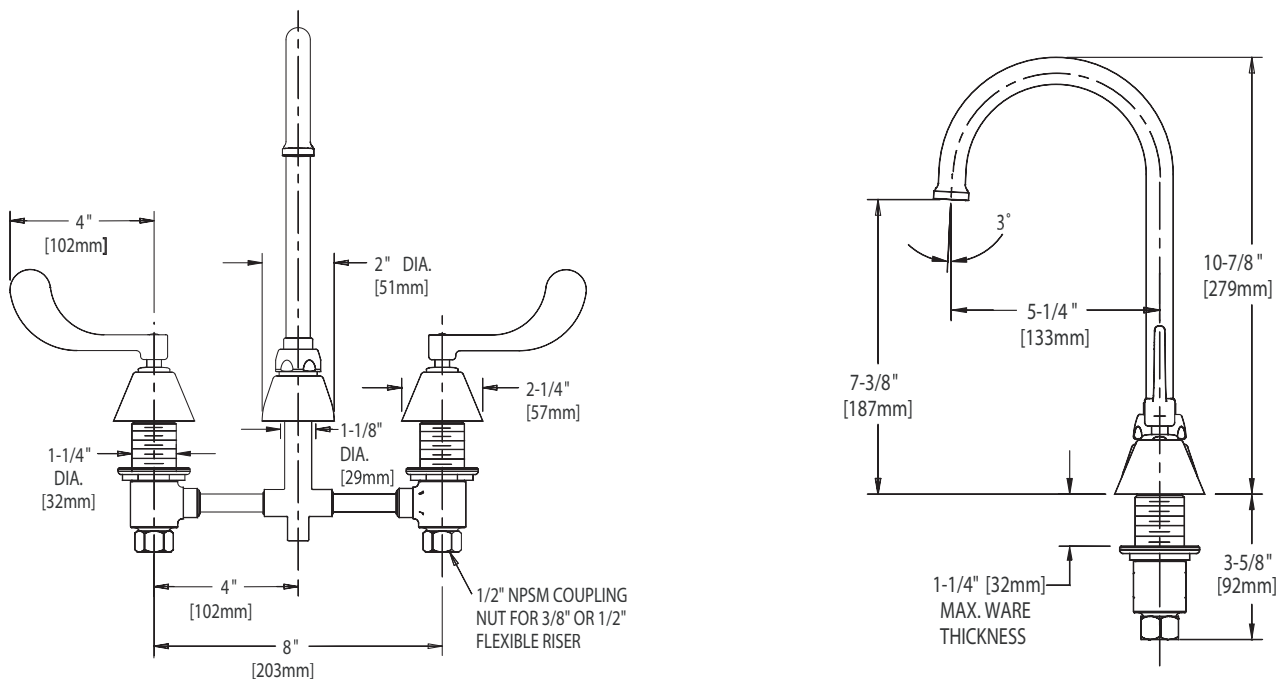
786-GN2FCCP

Deck Mounted 8" Widespread Faucet



ARCHITECT/ENGINEER SPECIFICATION

Chicago Faucets No. 786-GN2FCCP, Polished chrome plated solid brass body and spout. 5 1/4" C-C rigid/swing field convertible gooseneck spout, plain end outlet. 1.6 GPM (6.1 L/min) internal flow control at spout inlet. 4" wristblade handles with eight point tapered broach and secured color coded index buttons. Quatum™ quarter-turn renewable compression cartridge designed to close with water pressure with square tapered broach feature to help facilitate handle removal. 8" rigid valve body centers with 1/2" NPSM threaded inlets with coupling nuts for connection to 3/8" or 1/2" standard flexible risers. Mounting hardware included. This product meets ADA requirements and is tested and certified to industry standards: ASME A112.18.1, NSF 61, Sec. 9 and CSA B125.



OPERATION AND MAINTENANCE

Installation should be in accordance with local plumbing codes. Flush all pipes thoroughly before installation. After installation, remove spout outlet or flow control and flush faucet thoroughly to clear any debris. Care should be taken when cleaning this product. Do not use abrasive cleaners, chemicals or solvents as they can result in surface damage. Use mild soap and warm water for cleaning and protecting the life of Chicago Faucet products. For specific operation and maintenance refer to the installation instructions and repair parts documents that are located at www.chicagofaucets.com.

Chicago Faucets, member of the Geberit Group, is the leading brand of commercial faucets and fittings in the United States, offering a complete range of products for schools, laboratories, hospitals, office buildings, food service, airports and sport facilities. Call 1.800.TECTRUE or 1.847.803.5000 Option 1 for installation or other technical assistance.



2100 South Clearwater Drive
Des Plaines, IL 60018
P: 847/803-5000
F: 847/803-5454
Technical: 800/TEC-TRUE
www.chicagofaucets.com

626-FCCP

Deck Mounted Single Hole Fitting

PRODUCT TYPE

Deck mounted single hole fitting

FEATURES & SPECIFICATIONS

- Polished chrome plated finish
- Solid brass construction
- 5 1/4" C-C Rigid/Swing field convertible gooseneck spout, catalog #GN2FC
- 1.6 GPM laminar flow device at spout inlet
- 1/2" NPSM supply inlet with coupling nuts for 3/8" or 1/2" flexible risers
- Mounting hardware included

PERFORMANCE SPECIFICATION

- Rated Operating Pressure: 20-125 PSI
- Rated Operating Temperature: 40-140° F

WARRANTY

- Lifetime Limited Faucet Warranty
- 1-Year Limited Finish Warranty

COMPLIANT To

- ASME A112.18.1M
- CSA B125
- NSF 61, Sec. 9

Job Name _____
Item Number _____
Section/Tag _____
Model Specified _____
Architect _____
Engineer _____
Contractor _____
☐ Submitted as Shown ☐ Submitted with Variations
Date _____



626-FCCP

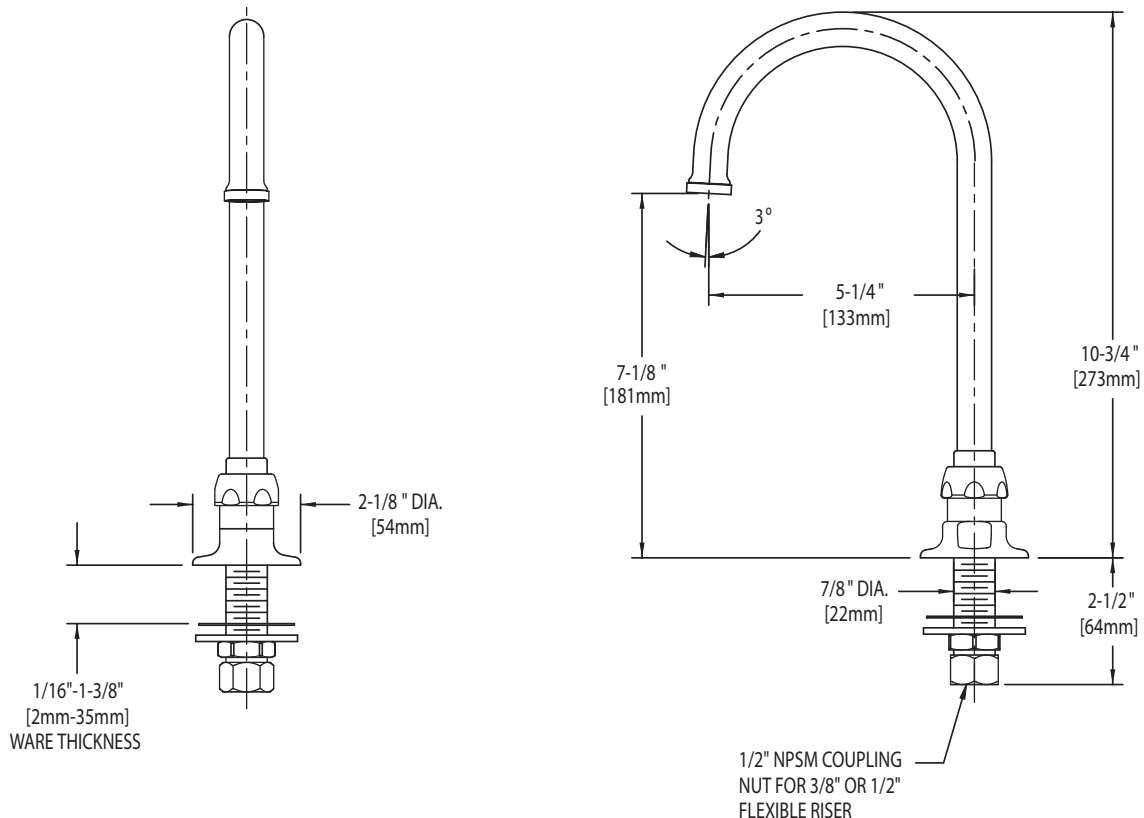
Deck Mounted Single Hole Fitting

**CHICAGO
FAUCETS**

a Geberit company

ARCHITECT/ENGINEER SPECIFICATION

Chicago Faucets No. 626-FCCP, Polished chrome plated solid brass construction. 5 1/4" C-C rigid/swing field convertible gooseneck spout. 1.6 GPM laminar flow device at spout inlet. 1/2" NPSM threaded inlets with coupling nuts for connection to 3/8" or 1/2" standard flexible risers. Mounting hardware included. This product is tested and certified to industry standards: ASME A112.18.1, CSA B125 and NSF 61, section 9.



OPERATION AND MAINTENANCE

Installation should be in accordance with local plumbing codes. Flush all pipes thoroughly before installation. After installation, remove spout outlet or flow control and flush faucet thoroughly to clear any debris. Care should be taken when cleaning this product. Do not use abrasive cleaners, chemicals or solvents as they can result in surface damage. Use mild soap and warm water for cleaning and protecting the life of Chicago Faucet products. For specific operation and maintenance refer to the installation instructions and repair parts documents that are located at www.chicagofaucets.com.

Chicago Faucets, member of the Geberit Group, is the leading brand of commercial faucets and fittings in the United States, offering a complete range of products for schools, laboratories, hospitals, office buildings, food service, airports and sport facilities. Call 1.800.TECTRUE or 1.847.803.5000 Option 1 for installation or other technical assistance.



2100 South Clearwater Drive
Des Plaines, IL 60018
P: 847/803-5000
F: 847/803-5454
Technical: 800/TEC-TRUE
www.chicagofaucets.com

786-GN8FCABCP

Deck Mounted - 8" Centers

P4D, P4E, P4F

PRODUCT TYPE

Deck Mounted 8" Widespread Faucet

FEATURES & SPECIFICATIONS

- Polished chrome plated finish
- Solid brass construction
- ECAST design provides durable brass construction with total lead content less than 0.25% by weighted average
- Rigid valve bodies
- 8" C-C Rigid/Swing field convertible gooseneck spout, plain end, catalog #GN8FC
- 1.6 GPM (6.1 L/min) internal flow control located at spout inlet
- 4" Wristblade handles with eight point broach and secured color coded index buttons, catalog #317
- Quatern™ quarter-turn renewable compression cartridge that closes with water pressure with tapered square broach to facilitate handle removal, catalog #377-XTLH and #377-XTRH
- 1/2" NPSM supply inlets with coupling nuts for 3/8" or 1/2" flexible risers
- Mounting hardware included

PERFORMANCE SPECIFICATION

- Rated Operating Pressure: 20-125 PSI
- Rated Operating Temperature: 40-140° F

WARRANTY

- Lifetime Limited Faucet Warranty
- 5-Year Limited Cartridge Warranty
- 1-Year Limited Finish Warranty

COMPLIANT TO

- California Plumbing Law (AB1953)
- NSF 61, Sec. 9
- CSA AB1953
- ASME A112.18.1
- ADA

Job Name	_____
Item Number	_____
Section/Tag	_____
Model Specified	_____
Architect	_____
Engineer	_____
Contractor	_____
<input type="checkbox"/> Submitted as Shown	<input type="checkbox"/> Submitted with Variations
Date	_____

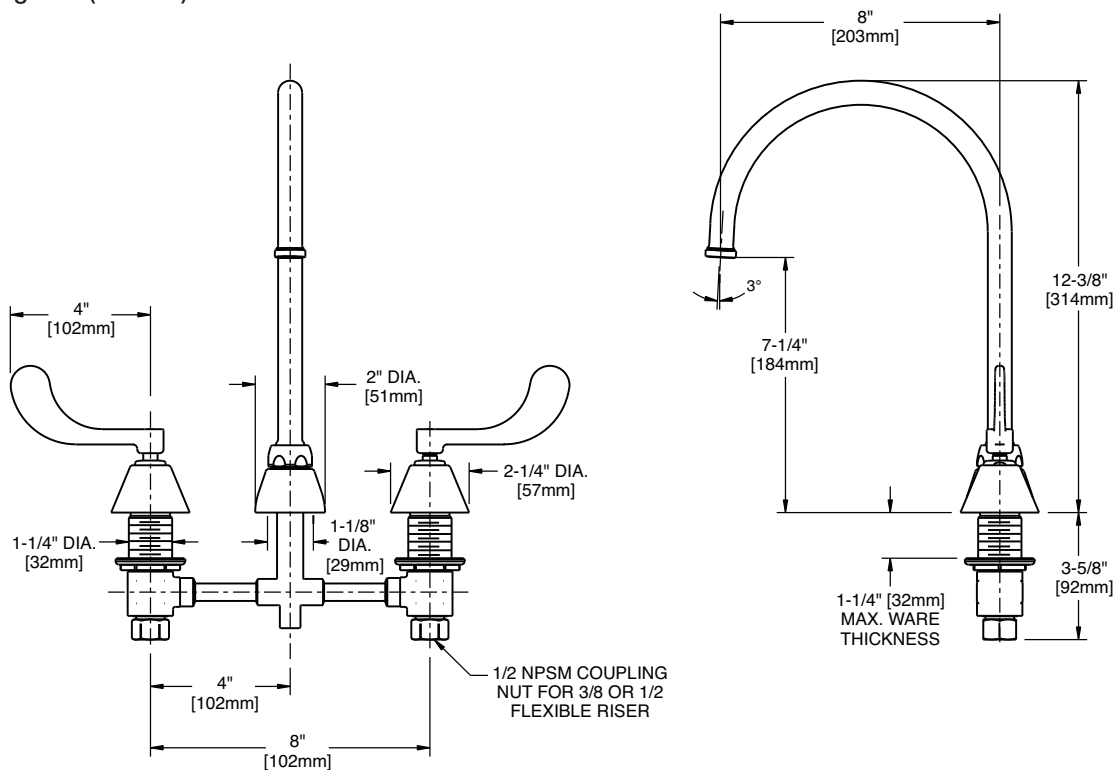


786-GN8FCABCP

Deck Mounted - 8" Centers

ARCHITECT/ENGINEER SPECIFICATION

Chicago Faucets No. 786-GN8FCABCP, Polished chrome plated solid brass body and spout. ECAST™ construction with less than 0.25% lead content by weighted average. 8" C-C rigid/swing field convertible gooseneck spout, plain end outlet. 1.6 GPM (6.1 L/min) internal flow control at spout inlet. 4" Wristblade handles with eight point tapered broach and secured color coded index buttons. Quatern™ quarter-turn renewable compression cartridge designed to close with water pressure with square tapered broach feature to help facilitate handle removal. 8" Rigid valve body centers with 1/2" NPSM threaded inlets with coupling nuts for connection to 3/8" or 1/2" standard flexible risers. Mounting hardware included. This product meets ADA requirements and is tested and certified to industry standards: ASME A112.18.1, NSF 61 Sec. 9, CSA AB1953 and California Lead Plumbing Law (AB1953).



OPERATION AND MAINTENANCE

Installation should be in accordance with local plumbing codes. Flush all pipes thoroughly before installation. After installation, remove spout outlet or flow control and flush faucet thoroughly to clear any debris. Care should be taken when cleaning this product. Do not use abrasive cleaners, chemicals or solvents as they can result in surface damage. Use mild soap and warm water for cleaning and protecting the life of Chicago Faucet products. For specific operation and maintenance refer to the installation instructions and repair parts documents that are located at www.chicagofaucets.com.

ECAST™, from Chicago Faucets, is the line of durable, high-quality brass faucets and fixtures that are designed and manufactured with less than one quarter of one percent (0.25%) total lead content by weighted average. These products are intended for installation where state laws and local codes mandate lead content levels or in any location where lead content is a concern.



2100 South Clearwater Drive
Des Plaines, IL 60018
P: 847/803-5000
F: 847/803-5454
Technical: 800/TEC-TRUE
www.chicagofaucets.com

2300-CP

Single Control Deck Mounted Faucet with 10" Integral Spout

PRODUCT TYPE

Single control deck mounted faucet with 10" integral spout

FEATURES & SPECIFICATIONS

- Polished chrome plated finish
- Solid brass body construction
- 10" C-C Integral spout
- 2.2 GPM (8.3 L/min) pressure compensating aerator outlet, catalog #E12
- Metal lever handle
- Temperature limit stop
- Volume control
- Ceramic mixing cartridge, catalog #2300X
- 3/8" Copper tube supply inlets
- Mounting hardware included

PERFORMANCE SPECIFICATION

- Rated Operating Pressure: 20-125 PSI
- Rated Operating Temperature: 40-140° F

WARRANTY

- Lifetime Limited Faucet Warranty
- 5-Year Limited Cartridge Warranty
- 1-Year Limited Finish Warranty

COMPLIANT TO

- ASME A112.18.1
- CSA B125
- NSF 61, Sec. 9
- ADA

Job Name	_____
Item Number	_____
Section/Tag	_____
Model Specified	_____
Architect	_____
Engineer	_____
Contractor	_____
<input type="checkbox"/> Submitted as Shown	<input type="checkbox"/> Submitted with Variations
Date	_____



2300-CP

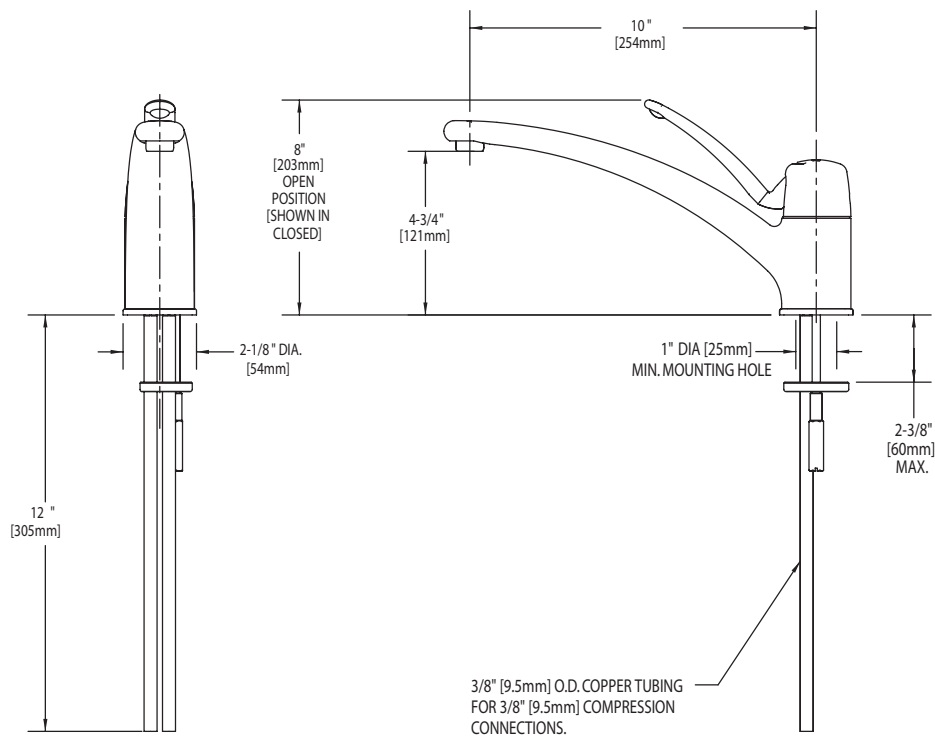
Single Control Deck Mounted Faucet with 10" Integral Spout



a Geberit company

ARCHITECT/ENGINEER SPECIFICATION

Chicago Faucets No. 2300-CP, Polished chrome plated solid cast brass body construction with integral 10" C-C spout. 2.2 GPM pressure compensating aerator outlet. Metal lever handle with temperature limit stop and volume control. Ceramic mixing cartridge. 3/8" copper tube supply inlets. All mounting hardware is included for standard lavatory installations. This product meets ADA requirements and is tested and certified to industry standards: ASME A112.18.1, CSA B125 and NSF 61, section 9.



OPERATION AND MAINTENANCE

Installation should be in accordance with local plumbing codes. Flush all pipes thoroughly before installation. After installation, remove spout outlet or flow control and flush faucet thoroughly to clear any debris. Care should be taken when cleaning this product. Do not use abrasive cleaners, chemicals or solvents as they can result in surface damage. Use mild soap and warm water for cleaning and protecting the life of Chicago Faucet products. For specific operation and maintenance refer to the installation instructions and repair parts documents that are located at www.chicagofaucets.com.

Chicago Faucets, member of the Geberit Group, is the leading brand of commercial faucets and fittings in the United States, offering a complete range of products for schools, laboratories, hospitals, office buildings, food service, airports and sport facilities. Call 1.800.TECTRUE or 1.847.803.5000 Option 1 for installation or other technical assistance.



2100 South Clearwater Drive
Des Plaines, IL 60018
P: 847/803-5000
F: 847/803-5454
Technical: 800/TEC-TRUE
www.chicagofaucets.com

626-GN8FCCP

Deck Mounted Single Water Inlet Fitting

PRODUCT TYPE

Deck mounted single water inlet fitting

FEATURES & SPECIFICATIONS

- Polished chrome plated finish
- Solid brass construction
- 8" C-C Rigid/Swing field convertible gooseneck spout, catalog #GN8FC
- 1.6 GPM laminar flow device at spout inlet
- 1/2" NPSM supply inlet with coupling nuts for 3/8" or 1/2" flexible risers
- Mounting hardware included

PERFORMANCE SPECIFICATION

- Rated Operating Pressure: 20-125 PSI
- Rated Operating Temperature: 40-140° F

WARRANTY

- Lifetime Limited Faucet Warranty
- 1-Year Limited Finish Warranty

COMPLIANT To

- ASME A112.18.1M
- CSA B125
- NSF 61, Sec. 9

Job Name _____
Item Number _____
Section/Tag _____
Model Specified _____
Architect _____
Engineer _____
Contractor _____
☐ Submitted as Shown ☐ Submitted with Variations
Date _____



626-GN8FCCP

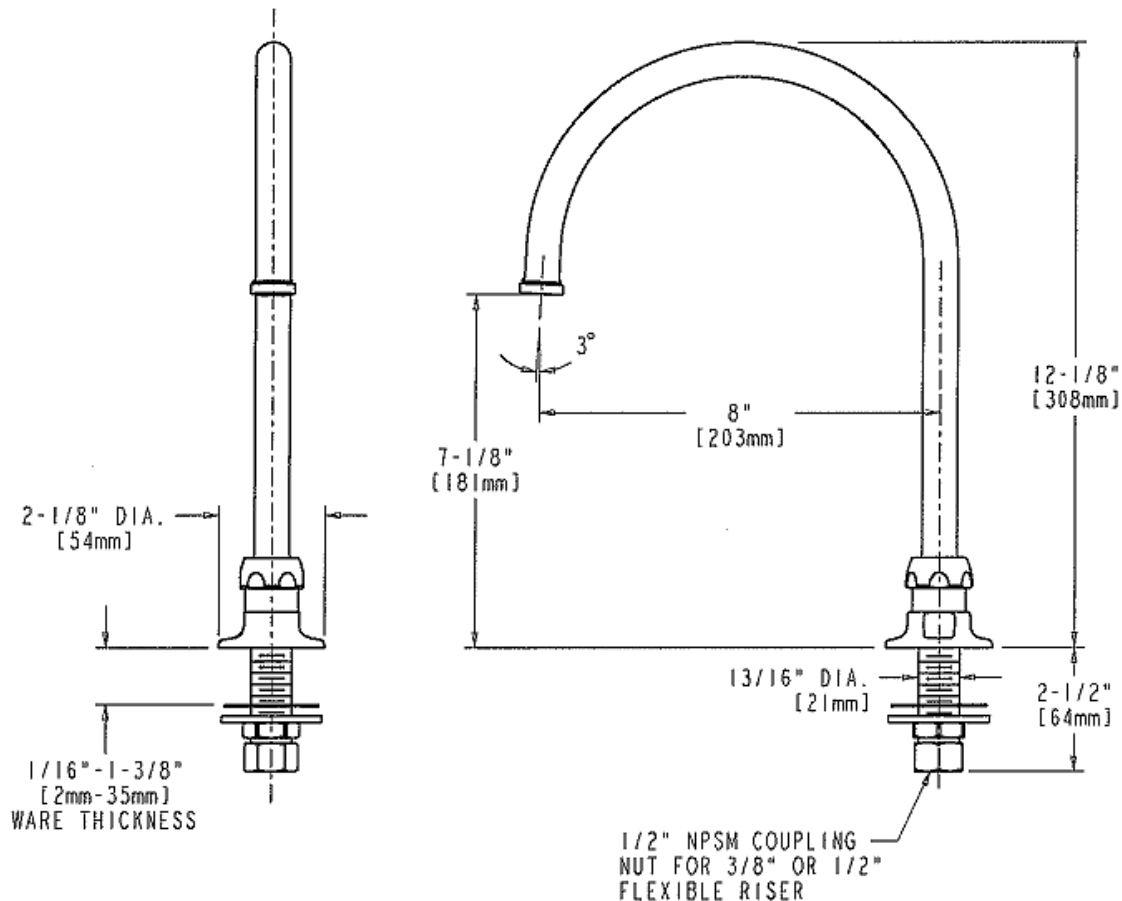
Deck Mounted Single Water Inlet Fitting

**CHICAGO
FAUCETS**

a Geberit company

ARCHITECT/ENGINEER SPECIFICATION

Chicago Faucets No. 626-GN8FCCP, Polished chrome plated solid brass construction. 8" C-C rigid/swing field convertible gooseneck spout. 1.6 GPM laminar flow device at spout inlet. 1/2" NPSM threaded inlets with coupling nuts for connection to 3/8" or 1/2" standard flexible risers. Mounting hardware included. This product is tested and certified to industry standards: ASME A112.18.1, CSA B125 and NSF 61, section 9.



OPERATION AND MAINTENANCE

Installation should be in accordance with local plumbing codes. Flush all pipes thoroughly before installation. After installation, remove spout outlet or flow control and flush faucet thoroughly to clear any debris. Care should be taken when cleaning this product. Do not use abrasive cleaners, chemicals or solvents as they can result in surface damage. Use mild soap and warm water for cleaning and protecting the life of Chicago Faucet products. For specific operation and maintenance refer to the installation instructions and repair parts documents that are located at www.chicagofaucets.com.

Chicago Faucets, member of the Geberit Group, is the leading brand of commercial faucets and fittings in the United States, offering a complete range of products for schools, laboratories, hospitals, office buildings, food service, airports and sport facilities. Call 1.800.TECTRUE or 1.847.803.5000 Option 1 for installation or other technical assistance.

2100 South Clearwater Drive
Des Plaines, IL 60018
P: 847/803-5000
F: 847/803-5454
Technical: 800/TEC-TRUE
www.chicagofaucets.com



897-CP

Wall Mounted Service Sink Faucet with Atmospheric Vacuum Breaker Spout

PRODUCT TYPE

Wall mounted service sink faucet with atmospheric vacuum breaker spout

FEATURES & SPECIFICATIONS

- Polished chrome plated finish
- Solid brass body construction
- Adjustable 7 5/8" - 8 3/8" centers
- Atmospheric vacuum breaker spout with pail hook and wall brace
- 3/4" Male garden hose thread outlet
- 2 3/8" Lever handles with secured color coded index buttons, catalog #369
- Quatern™ quarter-turn renewable compression cartridge that closes with water pressure with tapered square broach to facilitate handle removal, catalog #1-100XT and #1-099XT
- 1/2" NPT female union nut supply inlets
- 5/16" Hex. integral supply stops
- Mounting hardware included

PERFORMANCE SPECIFICATION

- Rated Operating Pressure: 20-125 PSI
- Rated Operating Temperature: 40-140° F

WARRANTY

- Lifetime Limited Faucet Warranty
- 5-Year Limited Cartridge Warranty
- 1-Year Limited Finish Warranty

COMPLIANT TO

- ASME A112.18.1
- CSA B125
- ADA

Job Name	_____
Item Number	_____
Section/Tag	_____
Model Specified	_____
Architect	_____
Engineer	_____
Contractor	_____
<input type="checkbox"/> Submitted as Shown	<input type="checkbox"/> Submitted with Variations
Date	_____



897-CP

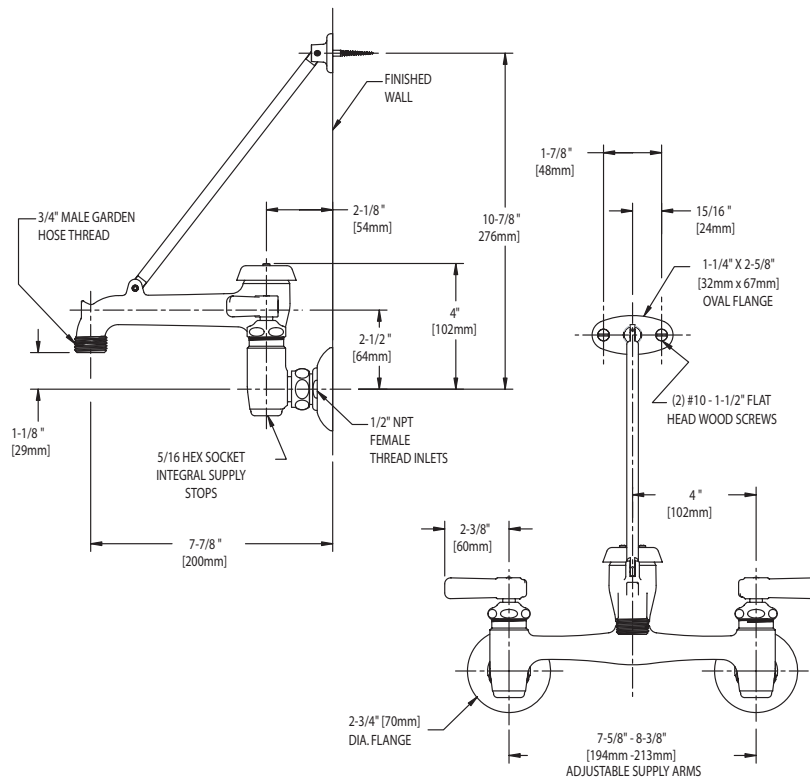
Wall Mounted Service Sink Faucet with Atmospheric Vacuum Breaker Spout

**CHICAGO
FAUCETS**

a Geberit company

ARCHITECT/ENGINEER SPECIFICATION

Chicago Faucets No. 897-CP, Polished chrome plated solid cast brass construction. Atmospheric vacuum breaker spout with pail hook, wall brace and 3/4" male garden hose thread outlet. 2 3/8" metal lever handles with eight point tapered broach and secured color coded index buttons. Quaturn™ quarter-turn renewable compression cartridge designed to close with water pressure with square tapered broach feature to help facilitate handle removal. Inlet supply arms with adjustable centers from 7 5/8" – 8 3/8". Integral supply stops in body for servicing cartridges. Mounting hardware included. This product meets ADA requirements and is tested and certified to ASME A112.18.1 and CSA B125 industry standards.



OPERATION AND MAINTENANCE

Installation should be in accordance with local plumbing codes. Flush all pipes thoroughly before installation. After installation, remove spout outlet or flow control and flush faucet thoroughly to clear any debris. Care should be taken when cleaning this product. Do not use abrasive cleaners, chemicals or solvents as they can result in surface damage. Use mild soap and warm water for cleaning and protecting the life of Chicago Faucet products. For specific operation and maintenance refer to the installation instructions and repair parts documents that are located at www.chicagofaucets.com.

Chicago Faucets, member of the Geberit Group, is the leading brand of commercial faucets and fittings in the United States, offering a complete range of products for schools, laboratories, hospitals, office buildings, food service, airports and sport facilities. Call 1.800.TECTRUE or 1.847.803.5000 Option 1 for installation or other technical assistance.

2100 South Clearwater Drive
Des Plaines, IL 60018
P: 847/803-5000
F: 847/803-5454
Technical: 800/TEC-TRUE
www.chicagofaucets.com



1-25-FSB**Safetymix® Shower System with Hand Spray**

Safetymix Pressure-Balancing mixing valve with lever handle and adjustable stop screw to limit handle turn. Wall/hand shower with flexible 5' metal hose, in-line vacuum breaker, wall connection and flange. 30" slide bar for hand shower mounting.

Modifications:

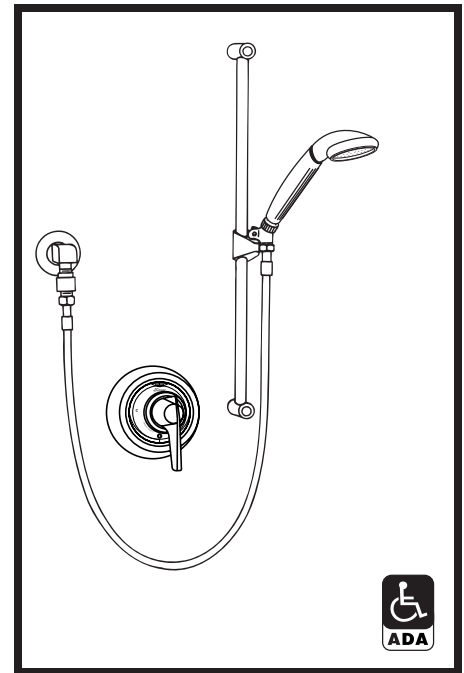
Suffix X: Integral service stops—allows water shut-off at valve for service

Suffix X-CHKS: Integral check stops—for use in installations where a positive shut-off device is used downstream of mixing valve

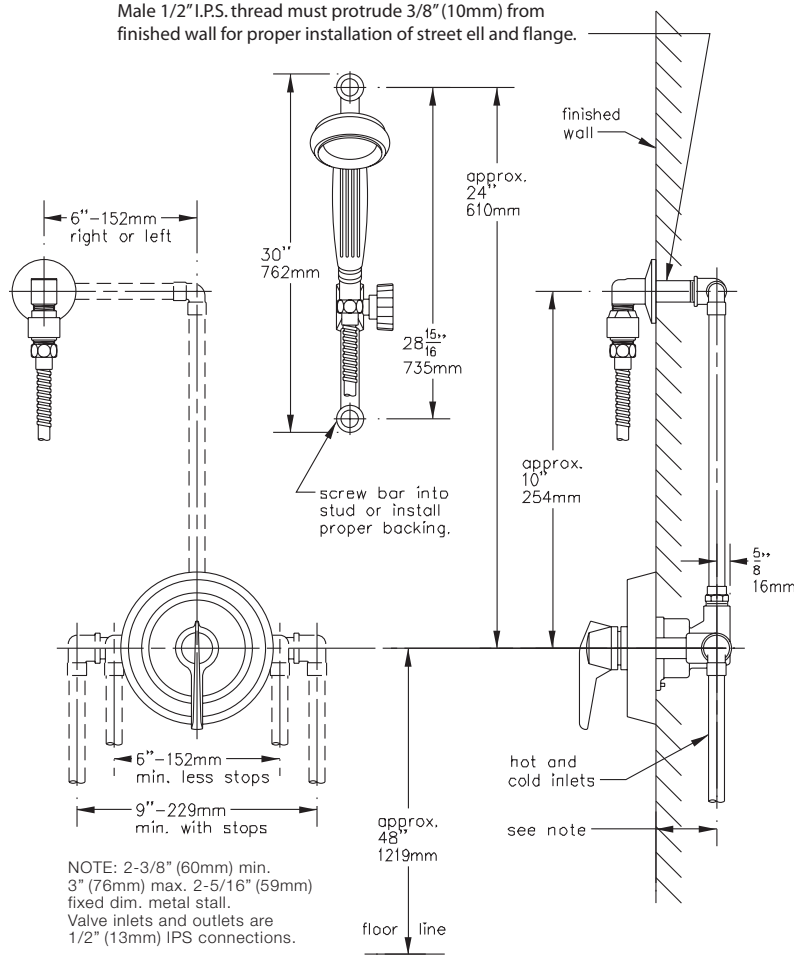
Suffix X-3/4: 3/4" valve to increase flow approximately 20%

Suffix 6: 6' hose in place of standard 5' hose

Suffix B48: 48" adjusting bar in place of standard 30" bar



Male 1/2" I.P.S. thread must protrude 3/8" (10mm) from finished wall for proper installation of street ell and flange.



**SYMMONS PRODUCTS MEET
ANSI A112.18.1M, EPA '92
AND ALL KNOWN FLOW RATE
REQUIREMENTS.
Shower Heads and Hand Showers
2.5 GPM (9.5 L/min)**

Job/Location


.....
.....

Engineer

.....
.....

Contractor

.....
.....

 This drawing to be used for rough-in installation only. All floor to center dimensions optional. Concealed piping and fittings not furnished by manufacturer. Dimensions are for ADA compliance (Americans with Disabilities Act) consult ADAAG or your state regulations for proper product choice and mounting locations. For complete installation, adjustment and service information see installation instructions.

Symmons Industries, Inc. ■ 31 Brooks Drive ■ Braintree, MA 02184
(800) 796-6667, (781) 848-2250 ■ Fax (800) 961-9621, (781) 843-3849
Website: www.symmons.com ■ Email: customerservice@symmons.com

P5A Alternate
P5B Alternate

Location:

SYMMONS® Allura™

Hand Shower System 4703

Specification Submittal

Feature Highlights

- Symmons hand shower system with lever handles.
- Symmons Temptrol® pressure balancing mixing valve with adjustable stop screw to limit handle turn.
- Wall/hand shower with 5 foot flexible metal hose, in-line vacuum breaker, wall connection and cradle for hand shower mounting
- Flow rate 2.5 gpm (9.5 L/min)
- Polished chrome finish

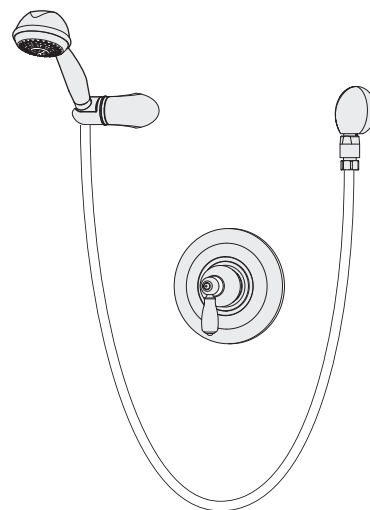
Model Numbers

- ☐ 4703Hand Shower System with Symmons Temptrol® pressure balancing mixing valve
p/n 4000-BODY
- ☐ 4703-TRMTrim only, valve must be ordered separately
- ☐ 4000-BODY Symmons Temptrol® pressure balancing mixing valve without trim
- ☐ 4000-X-BODY ...Symmons Temptrol® pressure balancing mixing valve without trim. Valve includes integral service stops to allow water shut-off for service.

Finish Options / Modifications

Append appropriate -suffix to model number.

- ☐ -STN Satin nickel
- Polished chrome (standard finish)



Options / Modifications

Append appropriate -suffix to model number.

- ☐ -IPS 1/2 inch female IPS connections on Symmons Temptrol® mixing valve
- ☐ -X Symmons Temptrol® pressure balancing mixing valve includes integral service stops to allow water shut-off for service, p/n 4000-X-BODY. (Option only applies when ordering model 4703.)
- ☐ -2.0 2.0 (7.6 L/min) Flow rate restrictor
- ☐ -1.5 1.5 (5.7 L/min) Flow rate restrictor

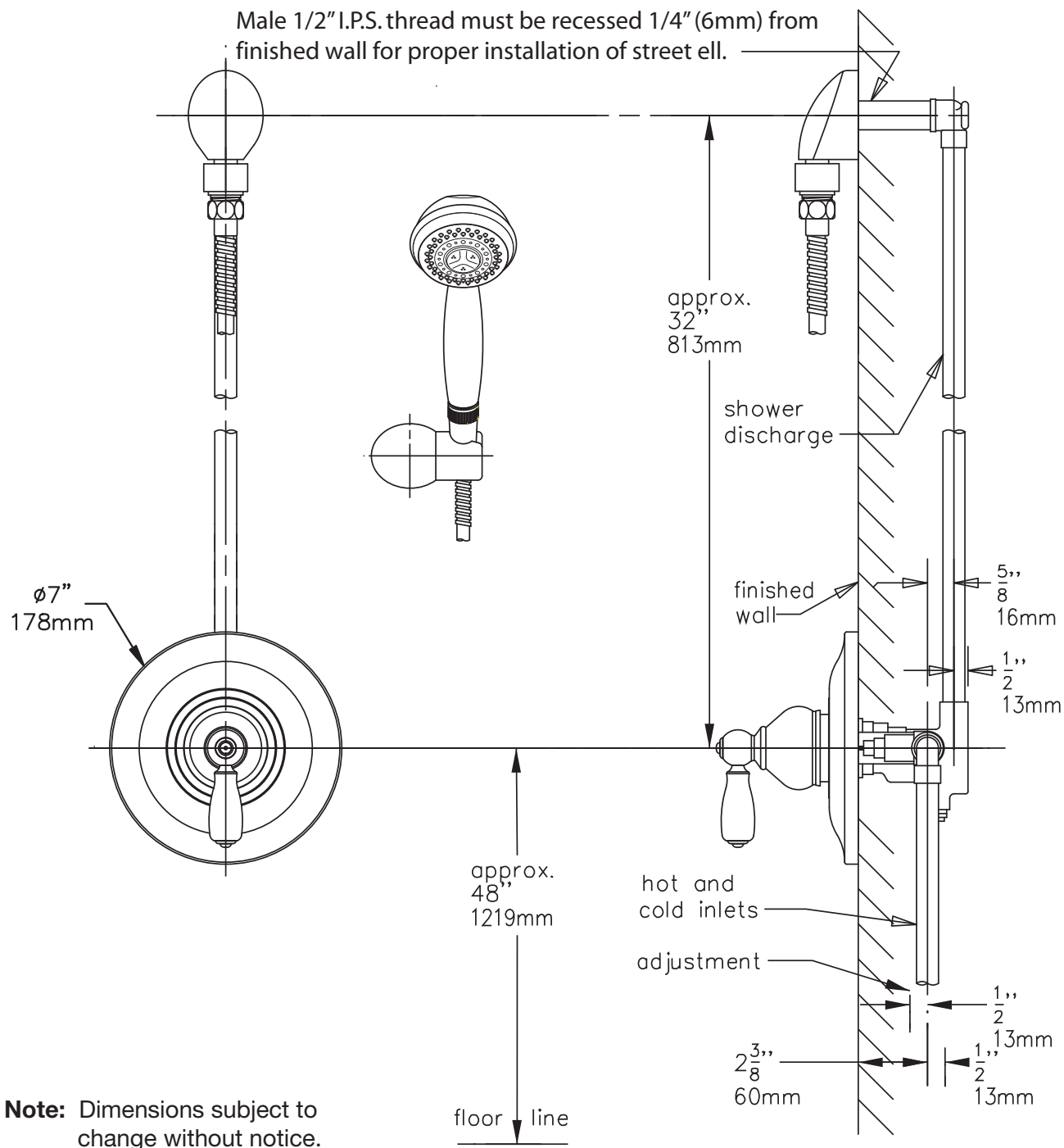
Standards / Certifications

ASME A112.18.1-2005/CSA B125.1-05

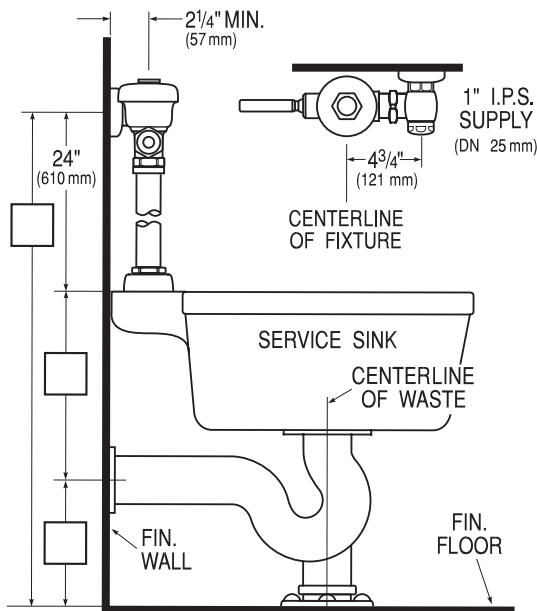
Warranty

- Limited Lifetime - to the original end purchaser in consumer installations.
- 5 years - for commercial installations

Dimensions *Allura Hand Shower System, 4703*



P8A



Sloan® Model Flushometer

117

Description

Exposed Service Sink Flushometer for use with top spud Service Sinks.

Flush Cycle

□ Model 117 (6.5 gpf/24.6 Lpf)

Variations

- **H** Handle on Front of Valve
- **HL-3** 3" Metal Oscillating Push Button on front of Valve
- **O** Offset Vacuum Breaker, Specify: 1" - 1½" - 2"
- **YJ** Split Ring Pipe Support
- **YK** Solid Ring Pipe Support
- **DFB** Dual Filtered Fixed Bypass Diaphragm

Specifications

Quiet, Exposed, Diaphragm Type, Chrome Plated Service Sink Flushometer with the following features:

- High Chloramine Resistant PERMEX™ Synthetic Rubber Diaphragm with Linear Filtered Bypass and Vortex Cleansing Action™
- ADA Compliant Metal Oscillating Non-Hold-Open Handle with Triple Seal Handle Packing
- 1" I.P.S. Screwdriver Bak-Chek™ Angle Stop
- Vandal Resistant Stop Cap
- Adjustable Tailpiece
- Vacuum Breaker with Flush Connection
- Spud Coupling and Spud Flange for 1½" Top Spud
- Sweat Solder Adapter with Cover Tube and Cast Wall Flange
- High Copper, Low Zinc Brass Castings for Dezincification Resistance
- Non-Hold-Open Handle and No External Volume Adjustment to Ensure Water Conservation
- Handle Packing, Stop Seat and Vacuum Breaker Molded from PERMEX™ Rubber Compound for Chloramine Resistance

Valve Body, Cover, Tailpiece and Control Stop shall be in conformance with ASTM Alloy Classification for Semi-Red Brass. Valve shall be in compliance to the applicable sections of ASSE 1037, ANSI/ASME A112.19.2 and Military Specification V-29193.

Contractor-friendly Packaging

Installation time is reduced by packaging rough-in components and finishing components separately. In addition, all main valve components and subassemblies are factory assembled requiring less field assembly of the valve on the job site. Components are packaged as follows:

- Stops and Supply Kits, packaged separately — 6 per package
- Fully assembled Valve, packaged with complete Vacuum Breaker Assembly and Flange Kit — 2 per package

See Accessories Section of the Sloan catalog for details on these and other Flushometer variations.

This space for Architect/Engineer approval

The information contained in this document is subject to change without notice.

SLOAN®

Made in the U.S.A.

SLOAN VALVE COMPANY • 10500 SEYMOUR AVE. • FRANKLIN PARK, IL. 60131
Ph: 1-800-9-VALVE-9 or 1-847-671-4300 • Fax: 1-800-447-8329 or 1-847-671-4380
www.sloanvalve.com