



SSH JV

Milpitas Station Design Unit 023 Readiness for Construction Demolition

SVBX C700

Wednesday, July 10, 2013

HALF SIZE
COPY



TYLIN INTERNATIONAL
engineers | planners | scientists

DEMOLITION NOTES																	
CIVIL			STRUCTURE			ARCHITECTURE			PLUMBING			ELECTRICAL			COMMUNICATION		
① SEE SHEET DB-D901			① PROVIDE DETAILED DESIGN AND DRAWINGS INDICATING THE FULL EXTENT OF THE SHORING WORK. ALL DRAWINGS AND FRONT PAGE OF CALCULATIONS, IF ANY, SHALL BE STAMPED AND WET SIGNED BY A CALIFORNIA LICENSED CIVIL OR STRUCTURAL ENGINEER.			① SEE SHEETS DB-D901 TO DB-D904			① SEE SHEET DB-D901			① REMOVE CONDUIT NP01, NP02 AND ITS ASSOCIATED WIRES FROM COMMUNICATIONS ROOM TO PULL BOX PPB1, A 120V CIRCUITS. SEE AS BUILT DRAWING EP214, EP 216, EP200 AND EP 203.			① REMOVE CONDUIT NO. COM.04, 05 ,06 AND 06A AND ITS ASSOCIATED WIRES FROM CRTC TO PULL BOX CPB2 (SEE DWG. EP 203 AND KC 510)		
			② AFTER SAWCUT OF STRUCTURAL REINFORCED CONCRETE, REMOVE APPROXIMATELY ONE INCH OF ALL EXPOSED REBARS AND FILL THE GAP WITH EPOXY.									② REMOVE CONDUIT NP03 AND ITS CABLE FROM JANITOR ROOM TO PULL BOX PPB1. REFER TO DRAWING EP203 AND EP214.			② REMOVE CONDUIT NO. COM.02 AND 03 AND ITS ASSOCIATED WIRES FROM CRTC TO JUNCTION BOX CPB1 (REFER TO DWG. EP203 / KC510)		
			③ ALL BEARING AND NON-LOAD BEARING REINFORCED CONCRETE WALLS SHALL BE BRACED BEFORE REMOVING THE ATTACHED ROOF OR FLOOR.									③ REMOVE CONDUIT NP22 AND NP23 AND ITS CABLE FROM PULL BOX PPB1 TO POLE NO 2. REFER TO DRAWING EP203, EP214 AND EP216.			③ REMOVE CONDUIT NO TEL01 FROM TCCR TO PB TPB1 PULL BOX AND TEL02, TEL04 TO TVMA & TVMB PULL BOX. REMOVE TEL 03 AND TEL 05 FROM TEL CABINET IN TCCR TO KIOSK A AND B.		
			④ PROVIDE A DETAILED DEMOLITION PLAN FOR BURIED CONCRETE 4 FT DEEP OR MORE. PROVIDE STRUCTURAL CALCULATIONS FOR TEMPORARY RETAINING WALLS AS NECESSARY.									④ REMOVE CONDUIT NP20 AND NP21 AND ITS CABLE FROM PULL NO 1 TO BOX PPB1 REFER TO DRAWING EP203, EP214 AND EP216.			④ REMOVE CONDUIT COM22 FROM COMM. ROOM TO POLE NO.2 AND REMOVE EXISTING PHOTOCCELL LOCATED ON THE TOP OF THE POLE.		
			⑤ REFER TO EXISTING DRAWINGS FOR ALL INFORMATION REGARDING EXISTING CONDITIONS.									⑤ REMOVE CONDUIT NP80 AND ITS CABLE FROM PULL NO 1 TO BOX PPB1. REFER TO DRAWING EP203 AND EP214.			⑤ REMOVE CONDUIT MSO1 AND ITS CABLES FROM COMMUNICATIONS ROOM TO KIOSK B PULL BOX.		
												⑥ DE-ENERGIZE BREAKER PPN2-29 BEFORE REMOVING CONDUIT NP01 AND ITS CABLE FROM PULL NO. 1 TO BOX PPB1. REFER TO DRAWING EP203 AND EP214.			⑥ REFER TO CONTRACT AS BUILT DRAWING EP 203, EP214 AND EP 215 FOR TELEPHONE AND POWER CIRCUITS ON LRT STAIR AND PLATFORM DEMOLITION WORK.		
												⑦ DE-ENERGIZE BREAKER PPN2-26 BEFORE REMOVING CONDUIT NP02 AND ITS CABLE. REFER TO DRAWING EP203 AND EP214.			⑦ REFER TO CONTRACT AS BUILT DRAWING KC 510 FOR COMMUNICATIONS CONDUIT AND CIRCUIT WORKS.		
												⑧ DE-ENERGIZE BREAKER PPN2-27 BEFORE REMOVING CONDUIT NP03 AND ITS CABLE. REFER TO DRAWING EP203 AND EP214.			⑧ PROVIDE TEMPORARY CONNECTION TO ALL COMMUNICATIONS AND TELEPHONE CIRCUIT AFFECTED SO AS NOT TO INTERRUPT SERVICE.		
												⑨ DE-ENERGIZE BREAKER PPN2-1, 2, 32 BEFORE REMOVING CONDUIT NP22 AND NP23 ITS CABLE. REFER TO DRAWING EP203 AND EP214.					

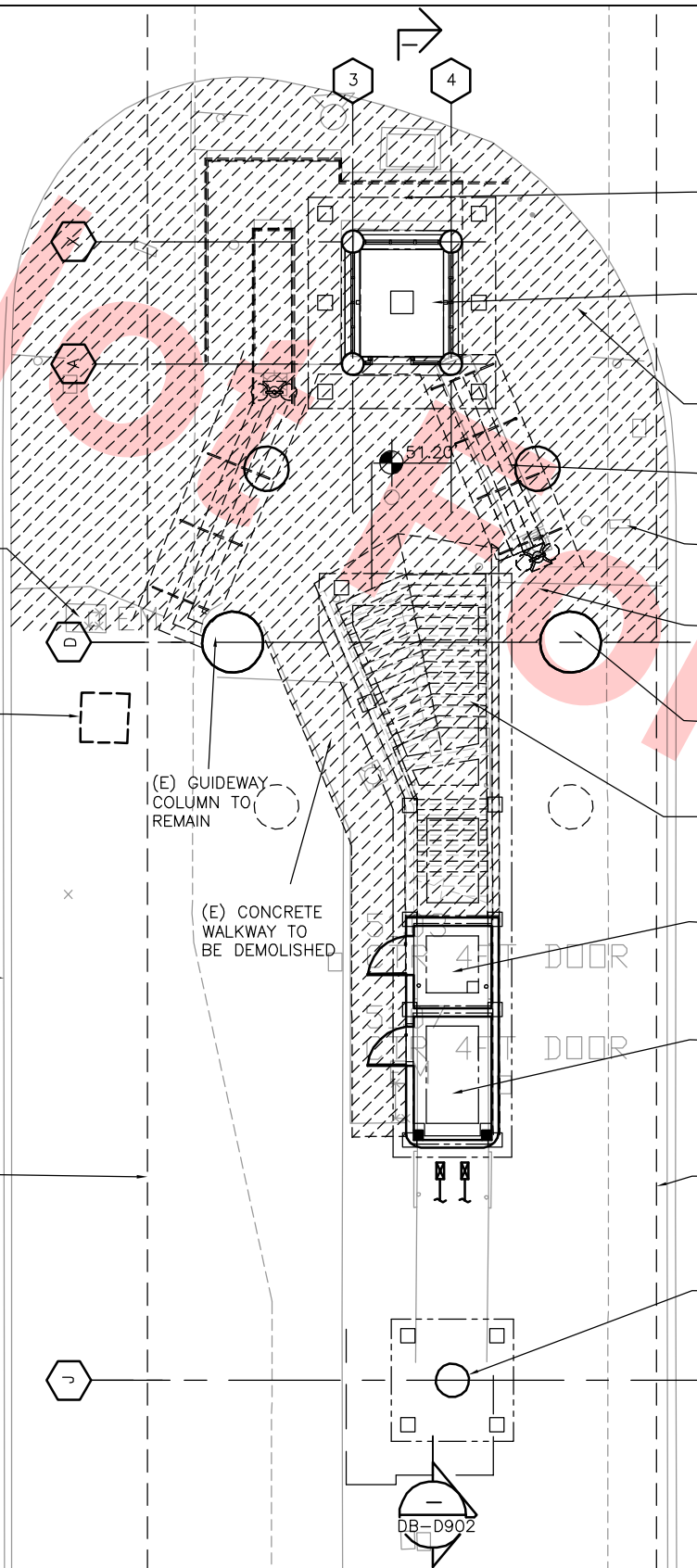


(E) PYLON TO BE REMOVED AND SAVED FOR REUSE

(E) IRRIGATION CONTROLS TO BE REMOVED

(E) ISLAND, CURBS, ASPHALT PAVING TO BE MODIFIED UNDER DU12 SCOPE OF WORK

EDGE OF (E) GUIDEWAY ABOVE



LRT STAIR GROUND LEVEL DEMOLITION PLAN 1
SCALE: 1/8"=1'-0"

DB-D901

(E) RAMP TO BE DEMOLISHED & REMOVED

(E) ELEVATOR TO REMAIN

(E) CONC. PAVING AND CURBCUTS TO BE DEMOLISHED & REMOVED

(E) STAIRS TO BE DEMOLISHED & REMOVED

(E) PYLON TO BE REMOVED AND SAVED FOR REUSE

(E) LIGHT FIXTURE TO BE REMOVED AND STORED FOR REUSE

(E) GUIDEWAY COLUMN TO REMAIN

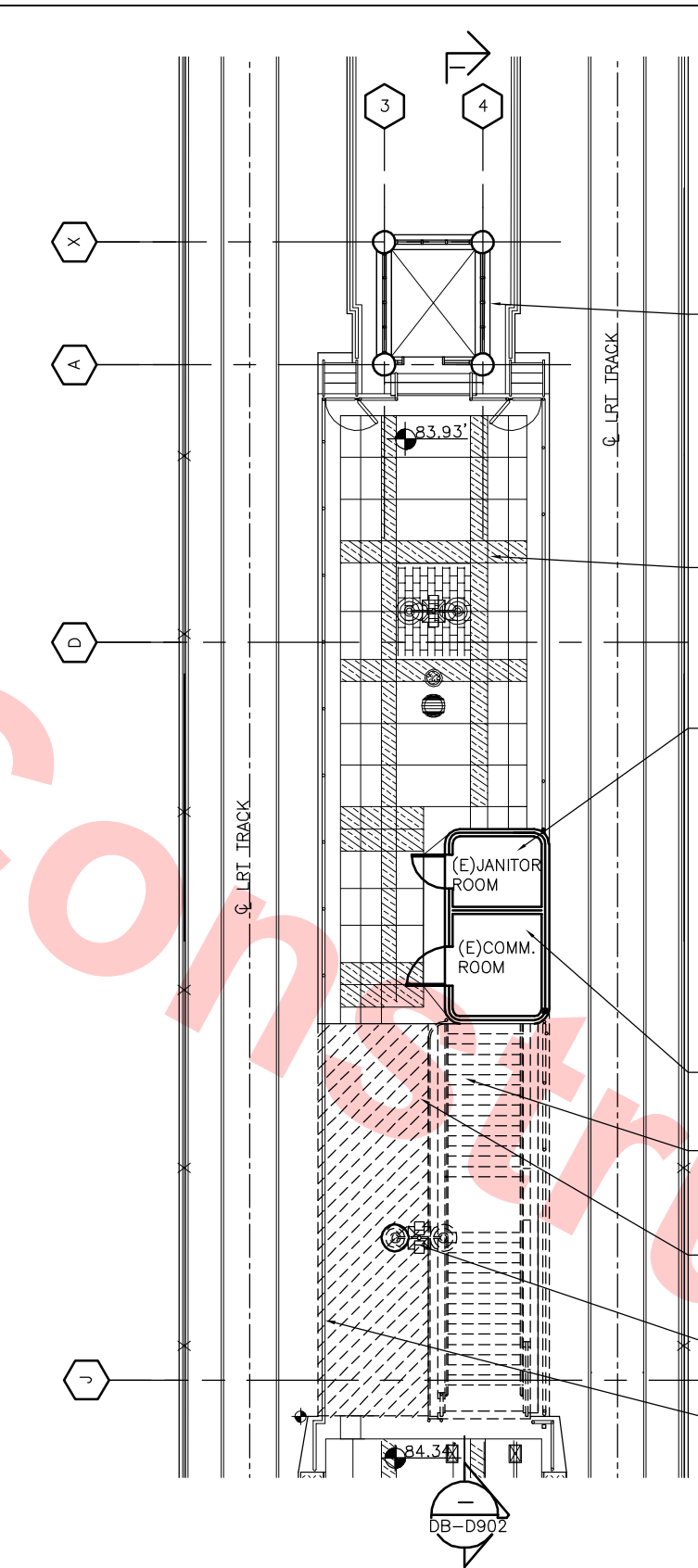
(E) STAIR STRUCTURE TO BE DEMOLISHED & REMOVED

(E) ELEVATOR ROOM BELOW STAIR TO REMAIN

(E) ELECTRICAL EQUIPMENT ROOM BELOW STAIR TO REMAIN

EDGE OF (E) GUIDEWAY ABOVE

(E) COLUMN TO BE MODIFIED TO SUPPORT NEW STAIR AND ESCALATORS



LRT STAIR PLATFORM LEVEL DEMOLITION PLAN 2
SCALE: 1/8"=1'-0"

(E) ELEVATOR TO REMAIN

(E) LRT STATION PLATFORM EXTENSION

TO BE CONVERTED TO ESCALATOR CONTROL ROOM

(E) JANITOR ROOM

(E) COMM. ROOM

(E) ROOMS TO REMAIN

(E) STAIR TO BE DEMOLISHED & REMOVED

EXTENT OF (E) PLATFORM AREA TO BE DEMOLISHED & REMOVED

(E) PLATFORM LIGHT FIXTURE TO BE REMOVED AND STORED FOR REUSE

(E) GUARDRAIL TO BE REMOVED AND STORED FOR REUSE

DEMOLITION LEGEND



ITEM/AREA TO BE DEMOLISHED
CONTRACTOR TO VERIFY ALL EXISTING UTILITIES UNDER AREAS TO BE DEMOLISHED. IF UTILITIES ARE DAMAGED DURING DEMOLITION, CONTRACTOR TO RESTORE WITH NO COST TO THE OWNER.

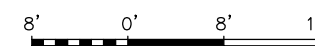
Santa Clara Valley Transportation Authority

NO EXCEPTIONS TAKEN (NET)
MAKE CORRECTIONS NOTED (MCN)
AMEND AND RESUBMIT (A/R)

Any action shown above is subject to the terms of the contract and does not relieve the Contractor of any of its obligations under the contract, including design and detailing.

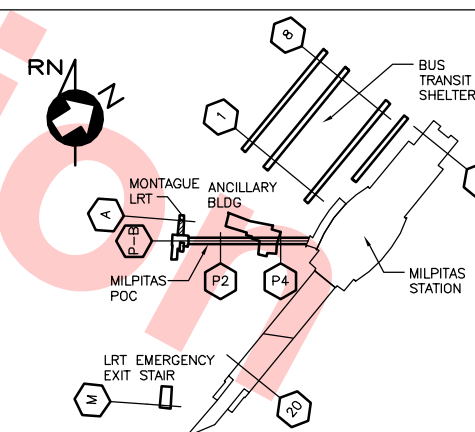
Contract No.: DB11002F

By: Date:



GRAPHIC SCALE

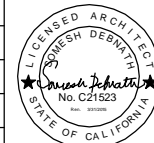
KEY PLAN



Jun 26, 2013 12:23pm G:\Current Projects\Berrysessa Extension Project\Station - Milpitas\CAD Drawings Out\13-0710 C700 MS LRT_POC - RFC Submittal\MS C700-S-DB-D901.dwg

REV	DATE	BY	SUB	APP	DESCRIPTION
0	20130710				READINESS FOR CONSTRUCTION

DESIGNED BY
S. SOPORI
DRAWN BY
K. STEPANIAN
CHECKED BY
S. DEBNATH
IN CHARGE
R. BARLAAN
DATE
20130710



Skanska
Shimmick
Herzog
Anil Verma Associates, Inc.
1970 Broadway, Suite 525
Milpitas, California 95035
A Joint Venture
SUBMITTED

1436 California Circle
Milpitas, California 95035
A Joint Venture
Lockwood, Andrews
& Newnam, Inc.
T-Y-LIN INTERNATIONAL
APPROVED



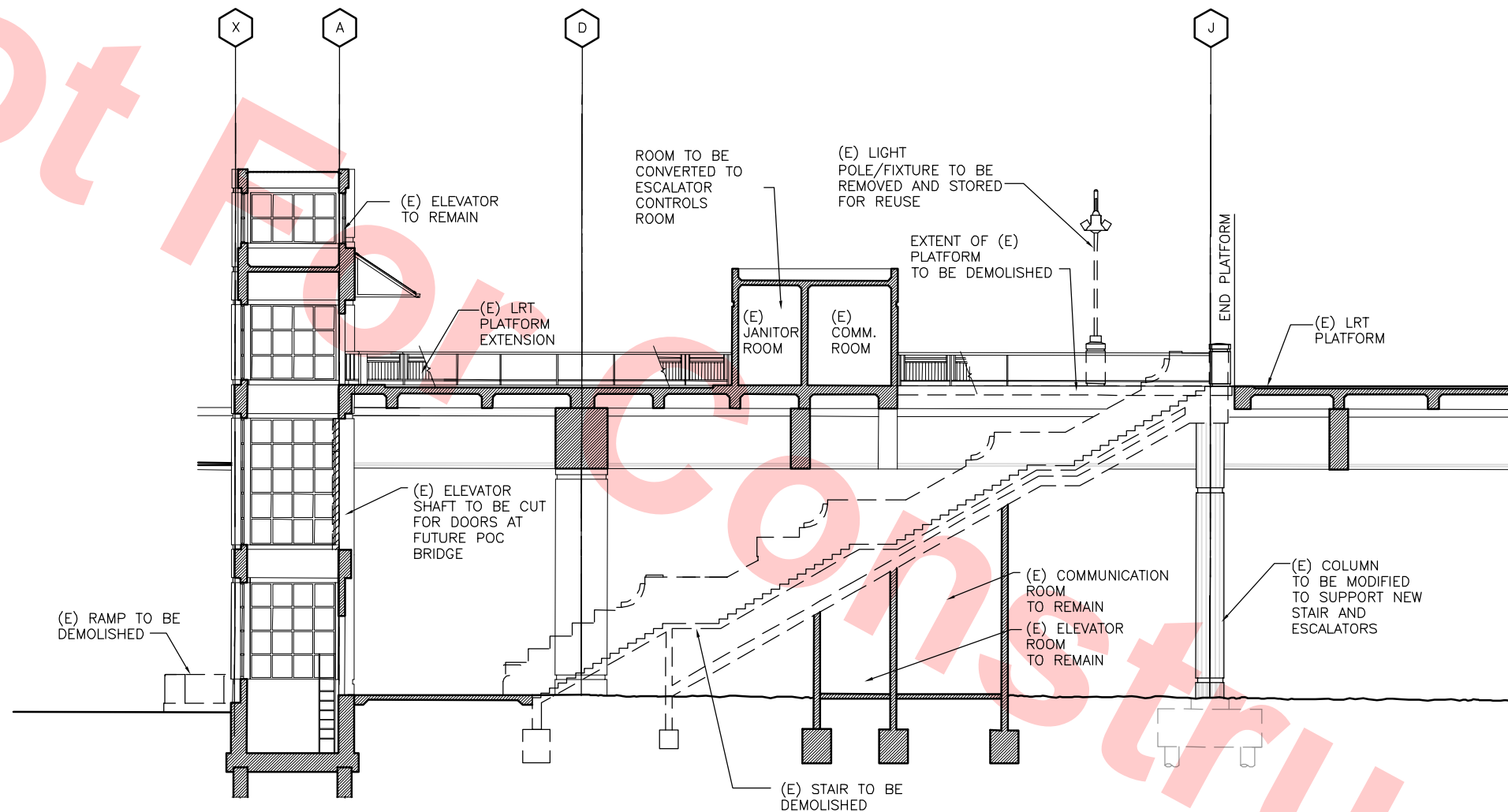
BART SILICON VALLEY BERRYESSA EXTENSION

LINE, TRACK, STATIONS AND SYSTEMS
DESIGN UNIT 023
MONTAGUE LRT AND MILPITAS POC

DEMOLITION PLANS

CADD FILENAME C700-S-DB-D901.dwg	REV.
SIZE SCALE D 1/8"=1'-0"	0
CONTRACT NO. C700	
AREA CODE DB	SHEET NO. D901
	PAGE NO. 0014

Jun 26, 2013 - 12:23pm G:\Current Projects\Berrysa Extension Project\Station - Milpitas\CAD Drawings Out\13-0710 C700 MS LRT_POC - RFC Submittal\MS C700-S-DB-D902.dwg
Joseph K



LRT STAIR DEMOLITION SECTION

SCALE: 1/8"=1'-0"

DB-D901

Santa Clara Valley Transportation Authority

___NO EXCEPTIONS TAKEN (NET)
___MAKE CORRECTIONS NOTED (MCN)
___AMEND AND RESUBMIT (A/R)

Any action shown above is subject to the terms of the contract and does not relieve the Contractor of any of its obligations under the contract, including design and detailing.

Contract No.: DB11002F

By: _____ Date: _____

REV	DATE	BY	SUB	APP	DESCRIPTION
0	20130710				READINESS FOR CONSTRUCTION

DESIGNED BY
S. SOPORI
DRAWN BY
K. STEPANIAN
CHECKED BY
S. DEBNATH
IN CHARGE
R. BARLAAN
DATE
20130710



Skanska Shimmick Herzog
1436 California Circle
Milpitas, California 95035
A Joint Venture
Anil Verma Associates, Inc.
1970 Broadway, Suite 525
Oakland, CA 94612
Phone: (510) 455-2533 Fax: (510) 530-2339

Lockwood, Andrews & Newnam, Inc.
A L&A DAILY COMPANY
T-Y-LIN INTERNATIONAL



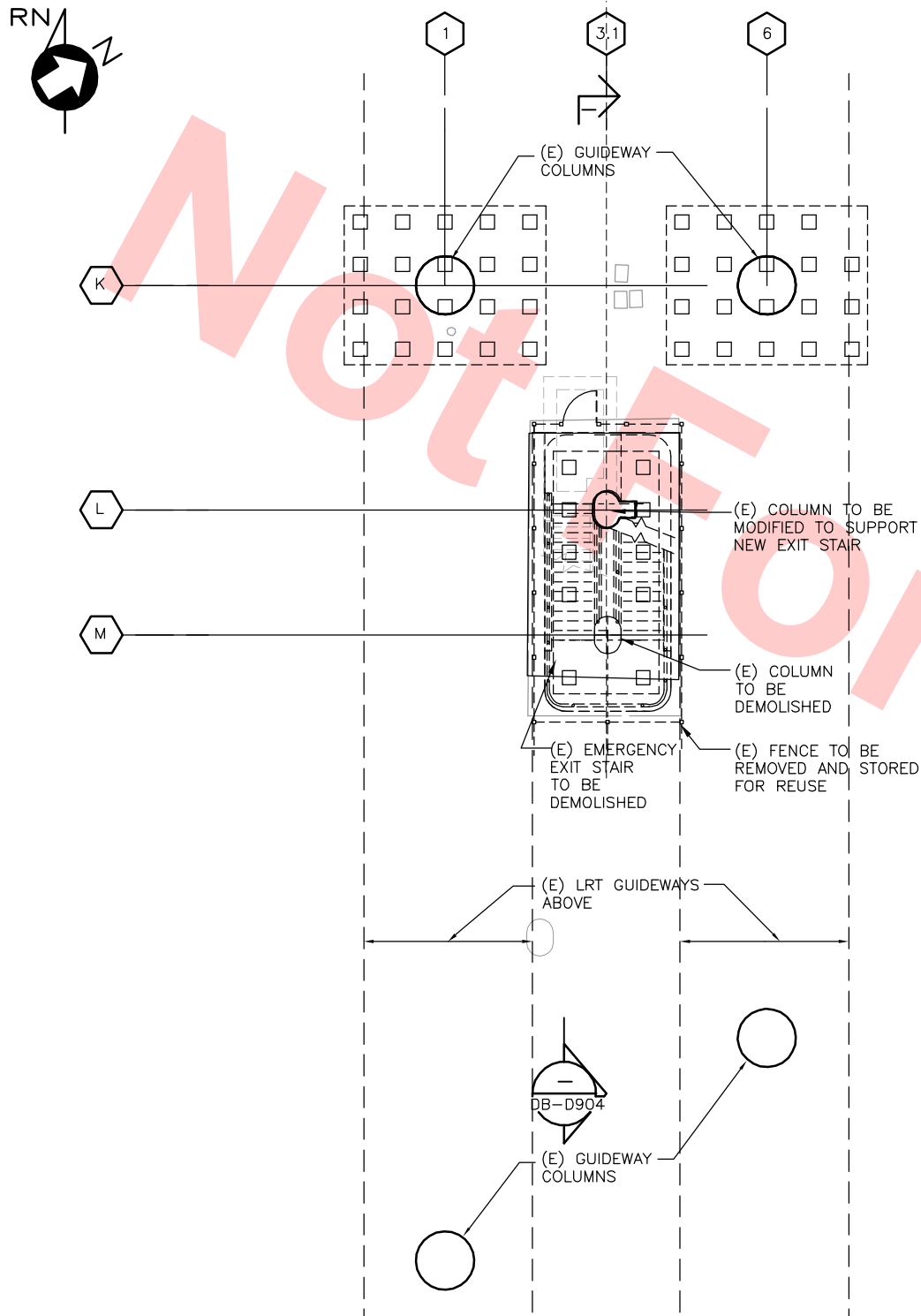
BART SILICON VALLEY BERRYESSA EXTENSION

LINE, TRACK, STATIONS AND SYSTEMS
DESIGN UNIT 023
MONTAGUE LRT AND MILPITAS POC

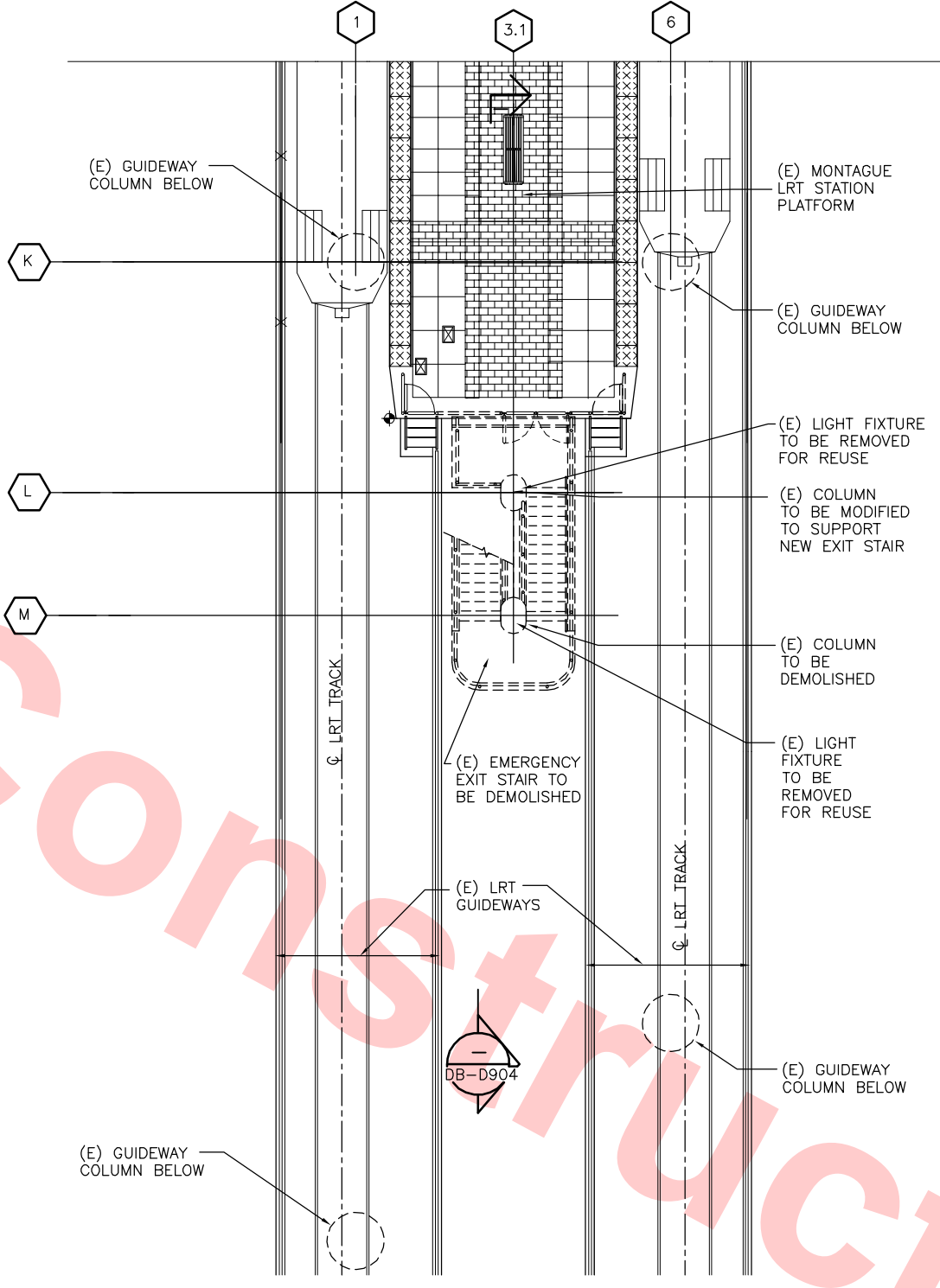
LRT STAIR DEMOLITION
SECTION

CADD FILENAME C700-S-DB-D902.dwg	REV. 0
SIZE D	SCALE 1/8"=1'-0"
CONTRACT NO. C700	SHEET NO. D902
AREA CODE DB	PAGE NO. 0015

Jun 26, 2013 - 12:27pm G:\Current Projects\Berrysessa Extension Project\Station - Milpitas\CAD Drawings Out\13-0710 C700 MS LRT_POC - RFC Submittal\MS C700-S-DB-D903.dwg Joseph K



LRT EMERGENCY EXIT STAIR AT GRADE DEMOLITION PLAN 1
SCALE: 1/8"=1'-0" DB-D903



LRT EMERGENCY EXIT STAIR AT PLATFORM DEMOLITION PLAN 2
SCALE: 1/8"=1'-0" DB-D903

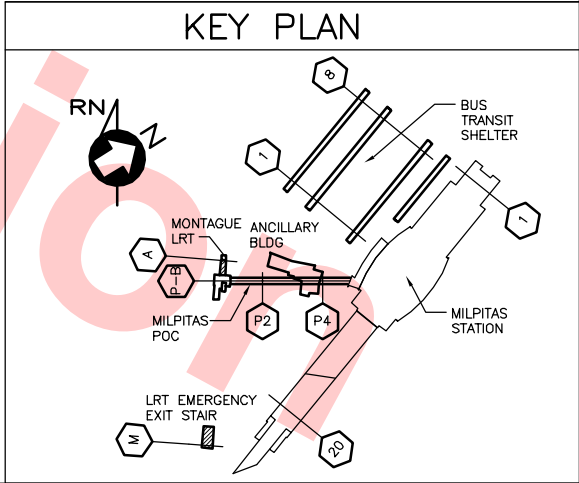
Santa Clara Valley Transportation Authority

NO EXCEPTIONS TAKEN (NET)
MAKE CORRECTIONS NOTED (MCN)
AMEND AND RESUBMIT (A/R)

Any action shown above is subject to the terms of the contract and does not relieve the Contractor of any of its obligations under the contract, including design and detailing.

Contract No.: DB11002F

By: _____ Date: _____



DESIGNED BY	S. SOPORI
DRAWN BY	K. STEPANIAN
CHECKED BY	S. DEBNATH
IN CHARGE	R. BARLAAN
DATE	20130710

REV	DATE	BY	SUB	APP	DESCRIPTION
0	20130710				READINESS FOR CONSTRUCTION



Skanska Shimmick Herzog

1436 California Circle
Milpitas, California 95035
A Joint Venture

Anil Verma Associates, Inc.

1970 Broadway, Suite 525
Oakland, CA 94612
Phone: (510) 455-2532 Fax: (510) 530-2339

Lockwood, Andrews & Newnam, Inc.

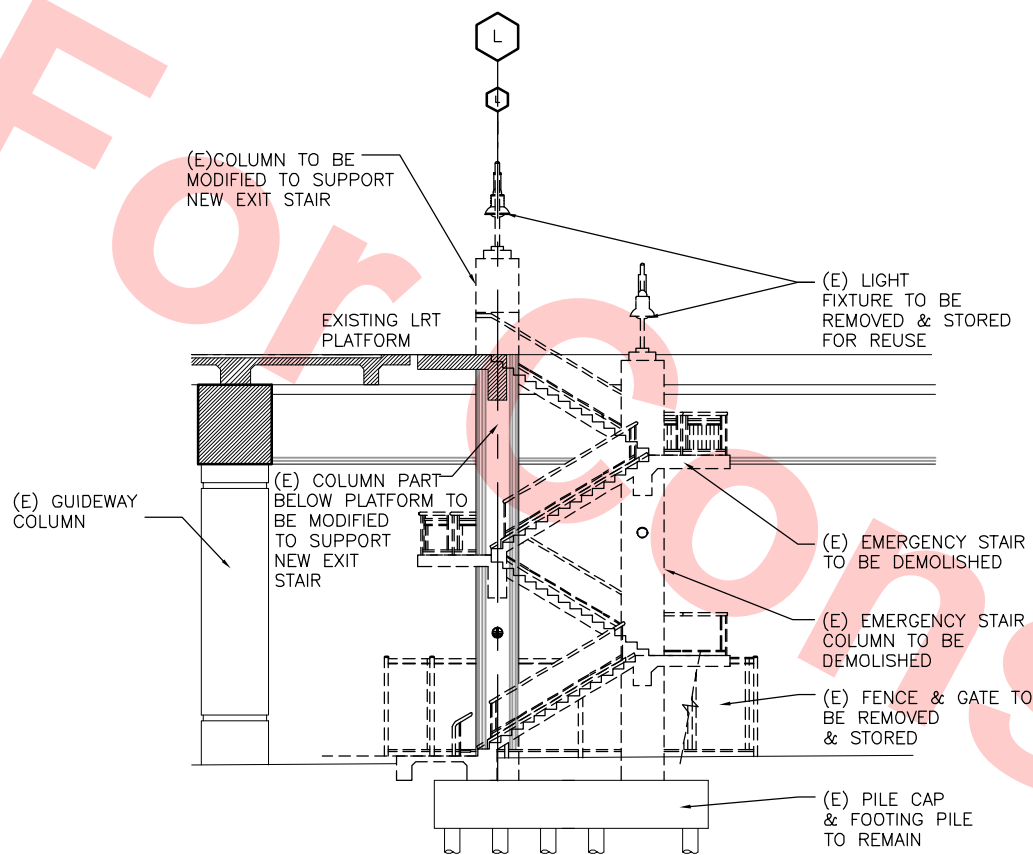
A Joint Venture

T-Y-LIN INTERNATIONAL



LINE, TRACK, STATIONS AND SYSTEMS			
DESIGN UNIT 023			
MONTAGUE LRT AND MILPITAS POC			
LRT EMERGENCY EXIT STAIR DEMOLITION PLANS			

CADD FILENAME	C700-S-DB-D903.dwg
SIZE	D
SCALE	1/8"=1'-0"
CONTRACT NO.	C700
REV.	0
AREA CODE	DB
SHEET NO.	D903
PAGE NO.	0016



LRT EMERGENCY STAIR DEMOLITION SECTION

SCALE: 1/8"=1'-0"

DB-D903

Santa Clara Valley Transportation Authority

☐ NO EXCEPTIONS TAKEN (NET)
☐ MAKE CORRECTIONS NOTED (MCN)
☐ AMEND AND RESUBMIT (A/R)

Any action shown above is subject to the terms of the contract and does not relieve the Contractor of any of its obligations under the contract, including design and detailing.

Contract No.: **DB11002F**

By: _____ Date: _____

Jun 26, 2013 12:28pm G:\Current Projects\VTB-Berryessa Extension Project\Station - Milpitas\CAD Drawings Out\13-0710 C700 MS LRT_POC - RFC Submittal\MS C700-S-DB-D904.dwg
Joseph K

REV	DATE	BY	SUB	APP	DESCRIPTION
0	20130710				READINESS FOR CONSTRUCTION

DESIGNED BY
S. SOPORI
DRAWN BY
K. STEPANIAN
CHECKED BY
S. DEBNATH
IN CHARGE
R. BARLAAN
DATE
20130710



Skanska Shimmick Herzog

1436 California Circle
Milpitas, California 95035
A Joint Venture

Anil Verma Associates, Inc.
1970 Broadway, Suite 525
Phone: (510) 455-2532 Fax: (510) 535-2339
Oakland, CA 94612

Lockwood, Andrews & Newnam, Inc.
A L&A DAILY COMPANY

T-Y LIN INTERNATIONAL

SUBMITTED *[Signature]*

APPROVED *[Signature]*



LINE, TRACK, STATIONS AND SYSTEMS DESIGN UNIT 023 MONTAGUE LRT AND MILPITAS POC LRT EMERGENCY STAIR DEMOLITION SECTION			CADD FILENAME C700-S-DB-D904.dwg
SIZE D	SCALE 1/8"=1'-0"	CONTRACT NO. C700	REV. 0
AREA CODE DB	SHEET NO. D904	PAGE NO. 0017	