



SSH JV

Milpitas Station Design Unit 023 Readiness for Construction Utilities

SVBX C700

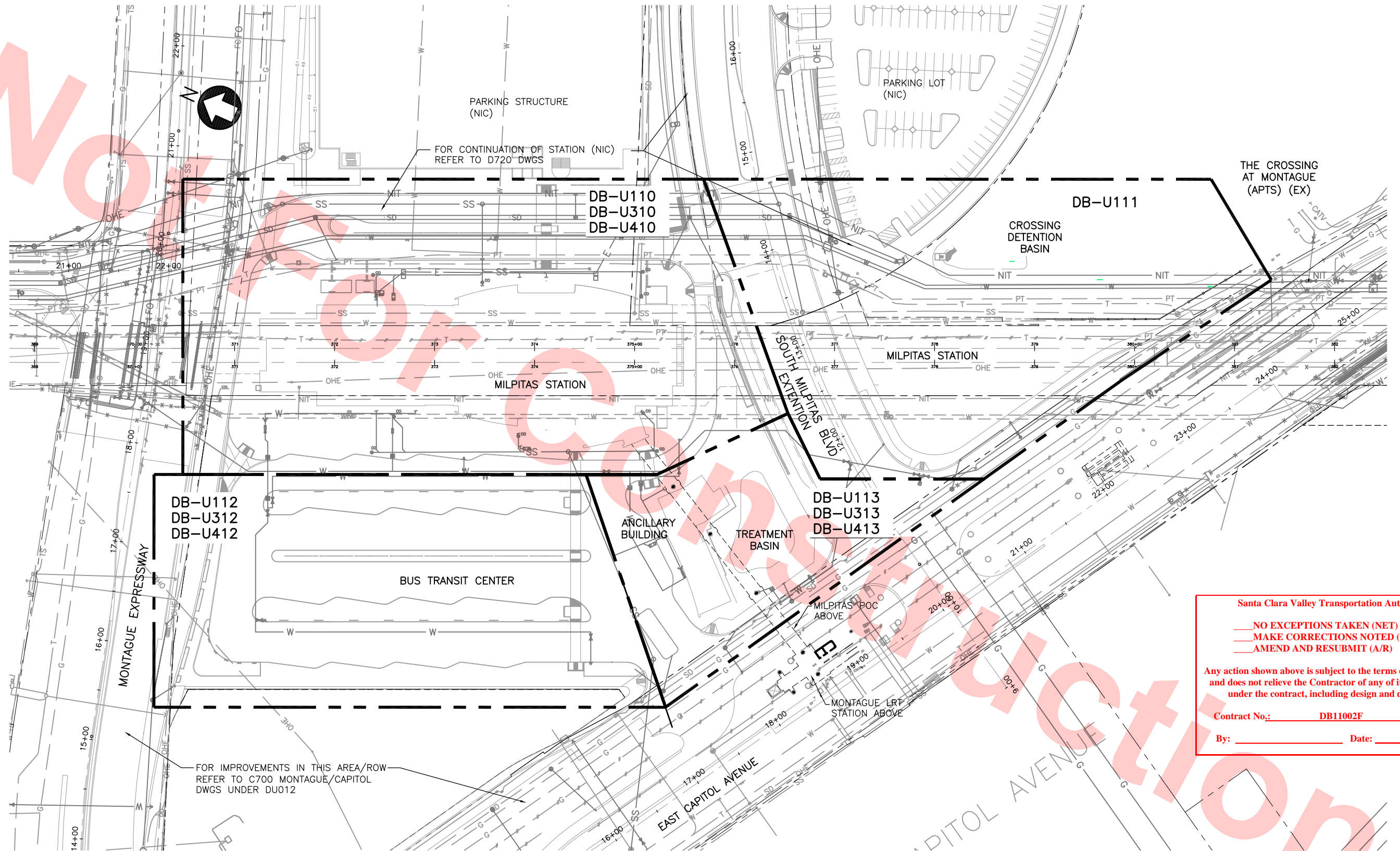
Wednesday, July 10, 2013

HALF SIZE
COPY



TYLIN INTERNATIONAL
engineers | planners | scientists

OWNER / OPERATOR					ABBREVIATIONS		UTILITY SYMBOLS		NOTES:
					EXISTING	PROPOSED	EXISTING	PROPOSED	
ACFC & WCD	ALAMEDA COUNTY FLOOD CONTROL & WATER CONSERVATION DISTRICT	ABN	ABANDON						1. CONTRACTOR SHALL CONTACT UNDERGROUND SERVICE ALERT (USA) TO FIELD VERIFY TYPE AND LOCATION OF UTILITIES BEFORE BEGINNING CONSTRUCTION AND FABRICATING MATERIALS FOR USE IN EXCAVATED AREAS. 2. ALL EXISTING UTILITIES, WHETHER OR NOT SHOWN ON THE DRAWINGS, SHALL BE PROTECTED AT ALL TIMES UNLESS NOTED OTHERWISE. 3. THE PROPOSED PRIVATE UTILITY RELOCATIONS ARE FOR INFORMATION ONLY AND ARE NOT PART OF THIS CONTRACT. THE PRIVATE UTILITY OWNER WILL PERFORM THEIR FINAL DESIGN AND RELOCATIONS. 4. THE PROPOSED PRIVATE RELOCATED UTILITIES BY THIRD PARTIES, AS SHOWN ON THESE UTILITY DRAWINGS, ARE APPROXIMATE BASED UPON INFORMATION PROVIDED BY THE VTA. 5. FOR RIGHT-OF-WAY BOUNDARIES AND UTILITY EASEMENTS REFER TO RIGHT-OF-WAY DRAWINGS. 6. PRIOR TO TRENCHING OVER OR DIRECTLY ADJACENT TO ANY SCVWD PIPELINE, CONTRACTOR MUST POTHOLE TO VERIFY 7. STORM, SANITARY AND WATER TRENCH CONSTRUCTION SHALL BE PER CITY OF MILPITAS STANDARD DRAWING NO 220. INSTALL TRENCH DAM PER DETAIL 1/LM-U900 AT 300' INTERVALS ALONG TRENCH RUNS. PAVEMENT RESTORATION AT TRENCHES SHALL BE PER CITY OF MILPITAS STANDARD DRAWING NO 222. 8. 4" Ø AND LARGER WATER PIPE SHALL BE DICL CLASS 350 WITH RESTRAINED JOINTS AND POLYETHYLENE ENCASEMENT OR RESTRAINED PVC (C900) AS NOTED. WATER PIPES LESS THAN 4" Ø SHALL BE PVC SDR26 (MIN) WITH INTERNAL JOINT RESTRAINT OR SOLVENT WELDS. WATER VALVES SHALL BE MUELLER A2360-20 OR A2360-38 (NRS) PER CITY OF MILPITAS STANDARD DRAWING NO 702. FIRE HYDRANTS SHALL BE CLOW MODEL 960 WITH TWO 2 1/2" PORTS AND ONE 4" PORT PER CITY OF MILPITAS STANDARD DRAWING NO 742. AIR RELEASE VALVES, BLOW OFF VALVES, AND VALVE ASSEMBLY ENCLOSURES SHALL BE PER CITY OF MILPITAS STANDARD DRAWING NO 738. CATHODIC PROTECTION SHALL BE PER CITY OF MILPITAS STANDARD DRAWING NO. 750. ANODES SHALL BE STANDARD POTENTIAL ALLOY MAGNESIUM. ALL ANODE LEADS AND TEST LEADS SHALL BE TERMINATED IN A FLUSH TO GRADE TRAFFIC BOX LOCATED BEHIND THE CURB. ALL BURIED NON-WELDED NON-INSULTATING PIPELINE JOINTS SHALL BE BONDED WITH TWO AWG #6 STRANDED COPPER CABLES WITH HMWPE INSULATION. 9. STORM DRAIN PIPE SHALL BE REINFORCED CONCRETE CLASS III UNLESS NOTED OTHERWISE. PVC STORM DRAIN AND SANITARY SEWER PIPE SHALL BE PER ASTM D3034 (SDR 35) WITH RUBBER GASKETS PER ASTM F477. STORM DRAIN CAPS WHERE SHOWN ON PLANS SHALL BE 3/4" EXTERIOR GRADE PLYWOOD COVERING ENTIRE PIPE OPENING. PLYWOOD SHALL BE SECURELY STAKED IN PLACE WITH A MINIMUM OF 2-2X4 STAKES. 10. SANITARY SEWER MANHOLES AND STORM DRAIN MANHOLES FOR PIPE LESS THAN 48-INCH DIAMETER SHALL BE PER CITY OF MILPITAS STANDARD DRAWING NUMBER 230. 11. FOR UTILITY COVERS GREATER THAN 6 SQUARE FEET, PAN LID IS REQUIRED, SEE LANDSCAPE PLANS FOR SPECIFICATIONS. ALIGN UTILITY COVERS WITH PAVING JOINTS, BANDS AND TACTILE STRIPS UNLESS SPECIFIED OTHERWISE.
ACWD	ALAMEDA COUNTY WATER DISTRICT	BFS	BART FACILITY STANDARDS						
AREMA	AMERICAN RAILWAY ENGINEERING MAINTENANCE-OF-WAY ASSOCIATION	CIR	CIRCLE						
AIR	AIR PRODUCTS	DBC	DIRECT BURIED CABLE						
AT&T	AT&T	DFM	DISTRIBUTION FEEDER MAIN						
BART	BAY AREA RAPID TRANSIT	FT	FEET						
CHEV	CHEVRON	EX	EXISTING						
CMC	COMCAST	FL	FLOW LINE						
COF	CITY OF FREMONT	FM	FORCE MAIN						
COM	CITY OF MILPITAS	FND	FOUND						
CSC	CITY OF SANTA CLARA	HP	HIGH PRESSURE						
CSJ	CITY OF SAN JOSE	JT	JOINT TRENCH						UTILITY LEGEND EXISTING CATV E CATV G JT NIT OHE PT SS SD E T W PV S C
CSJ-FO	CITY OF SAN JOSE SMART FIBER	LF	LINEAR FEET						
ICG	ICG COMMUNICATIONS, INC.	MULT	MULTIPLE						
KIND	KINDER MORGAN, INC.	NIC	NOT IN CONTRACT						
LEVEL 3 / L3	LEVEL (3) COMMUNICATIONS	NO / NOS	NUMBER / NUMBERS						
MCI	MCI, INC.	PL	PIPE LINE						
MCWD / MSD	MILPITAS CITY WATER DISTRICT / MILPITAS SANITARY DISTRICT - (CITY OF MILPITAS)	PROP	PROPOSED						
MFN	METROMEDIA FIBER NETWORK, INC.	RCP	REINFORCED CONCRETE PIPE						
MFS	MFS WORLDCOM	RR	RAILROAD						
OWT	ONE WORLD TELECOMMUNICATIONS	SDMH	STORM DRAIN MANHOLE						
PG&E	PACIFIC GAS & ELECTRIC	SSMH	SANITARY SEWER MANHOLE						
QWEST	QWEST COMMUNICATIONS INC.	TMH	TELEPHONE MANHOLE						
SBC	SBC COMMUNICATIONS, INC.	TP	TRANSMISSION PRESSURE						UTILITY LEGEND PROPOSED CATV E FO G JT NIT OHE PT RS SS SD SL T W RW
SCC	SANTA CLARA COUNTY	TRANS	TRANSFORMER/TRANSITION						
SCSD	SANTA CLARA SEWER DISTRICT	TBD	TO BE DETERMINED						
SCVTA / VTA	SANTA CLARA VALLEY TRANSPORTATION AUTHORITY	UNK	UNKNOWN						
SVRT	SILICON VALLEY RAPID TRANSIT	UTIL	UTILITY						
SCVWD	SANTA CLARA VALLEY WATER DISTRICT	WBO	WORK BY OTHERS						
SFWD	SAN FRANCISCO WATER DEPARTMENT								
SJWC	SAN JOSE WATER COMPANY								
SPRINT / SPR	SPRINT								
SVP	SILICON VALLEY POWER								
USD	UNION SANITARY DISTRICT								
UPRR	UNION PACIFIC RAILROAD								
XO	XO COMMUNICATIONS								
UTILITY TYPE					UTILITY MATERIAL		UTILITY LEGEND		UTILITIES LEGEND LS-01-G-1 UTILITY CODE CATV LINE BURIED ELECTRICAL LINE BURIED FIBER OPTIC LINE GAS LINE JOINT TRENCH LINE NITROGEN LINE OVERHEAD ELECTRICAL LINE PETROLEUM LINE RIPARIAN SETBACK SANITARY SEWER LINE STORM DRAIN LINE STREET LIGHT LINE BURIED TELEPHONE LINE WATER LINE RECYCLED WATER



PLAN
1"=50'



Santa Clara Valley Transportation Authority

- NO EXCEPTIONS TAKEN (NET)
- MAKE CORRECTIONS NOTED (MCN)
- AMEND AND RESUBMIT (A/R)

Any action shown above is subject to the terms of the contract and does not relieve the Contractor of any of its obligations under the contract, including design and detailing.

Contract No.: DB11002F

By: _____ Date: _____

Jun 25 2013 3:05pm C:\projects\copy of mba-template (28)\dms8477\C700-S-DB-U010.dwg

REV	DATE	BY	SUB	APP	DESCRIPTION
0	20130710				READINESS FOR CONSTRUCTION

DESIGNED BY
K. MULLER
DRAWN BY
K. MULLER
CHECKED BY
B. WAGNER
IN CHARGE
J. STREEPER
DATE
20130710



Skanska
Shimmick
Herzog
SUBMITTED

1436 California Circle
Milpitas, California 95035
A Joint Venture

Lookwood, Andrews
& Newnam, Inc.
A LEA A BALLY COMPANY

T-Y LIN INTERNATIONAL

APPROVED



BART SILICON VALLEY BERRYESSA EXTENSION

LINE, TRACK, STATIONS AND SYSTEMS
DESIGN UNIT 023
MILPITAS STATION
UTILITY DRAWING LAYOUT INDEX

CADD FILENAME C700-S-DB-U010.dwg	REV.	0
SIZE D	SCALE 1"=50'-0"	
CONTRACT NO. C700	SHEET NO. DB	PAGE NO. U010
AREA CODE		0077

- NOTES:
- FOR NOTES AND LEGEND, SEE DRAWING DB-U001.
 - ALL UTILITIES PREVIOUSLY ABANDONED OR TO BE ABANDONED WITH THIS CONTRACT SHALL BE REMOVED IF IN CONFLICT WITH WORK.
 - UTILITIES SHOWN OUTSIDE OF STATION AREA ARE FOR INFORMATION PURPOSES ONLY. FOR FURTHER INFORMATION, SEE DESIGN UNIT 012.
 - FOR ADDITIONAL DRAINAGE, SEE GRADING AND DRAINAGE SHEETS.

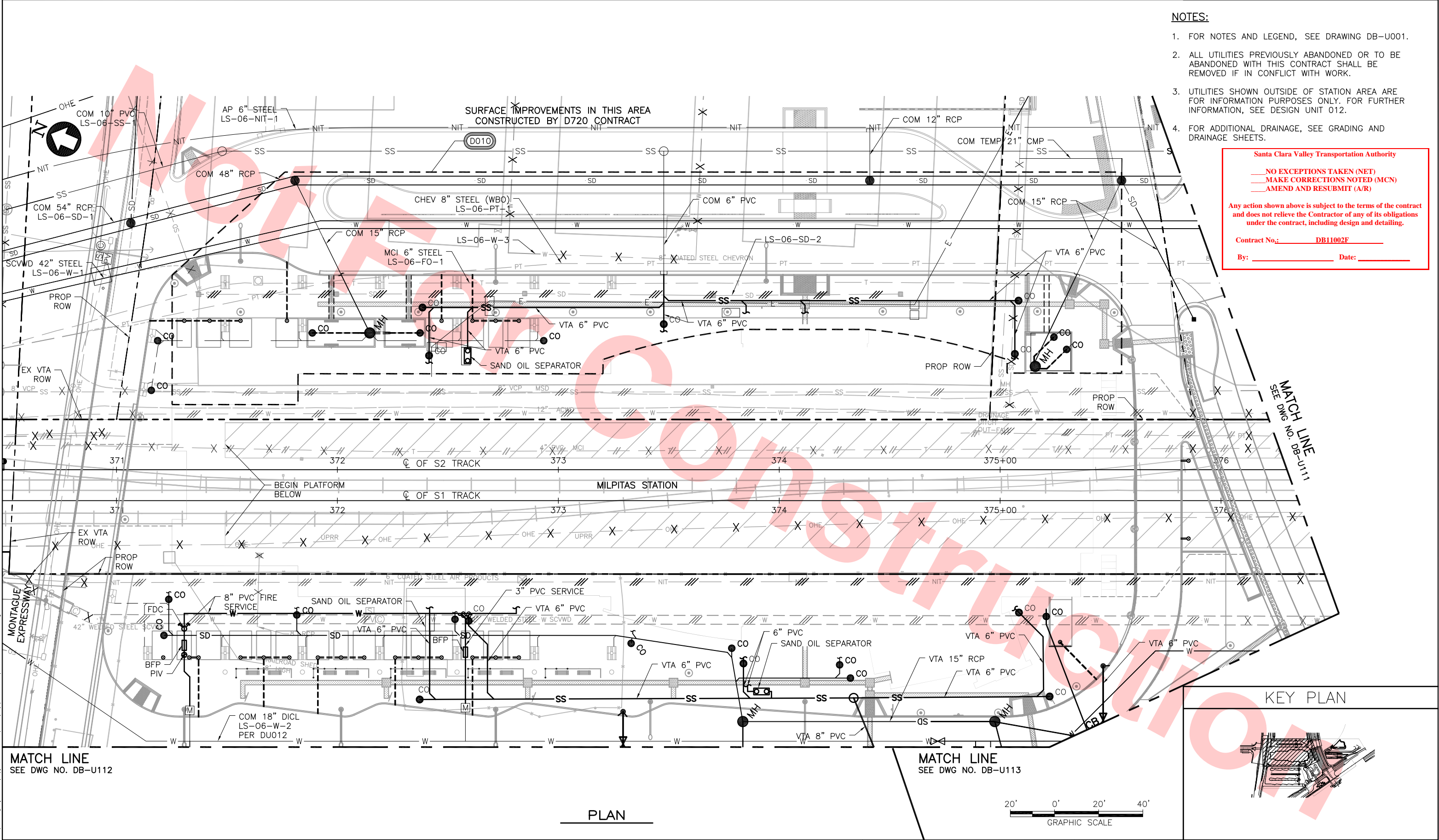
Santa Clara Valley Transportation Authority

NO EXCEPTIONS TAKEN (NET)
MAKE CORRECTIONS NOTED (MCN)
AMEND AND RESUBMIT (A/R)

Any action shown above is subject to the terms of the contract and does not relieve the Contractor of any of its obligations under the contract, including design and detailing.

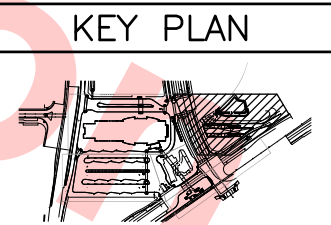
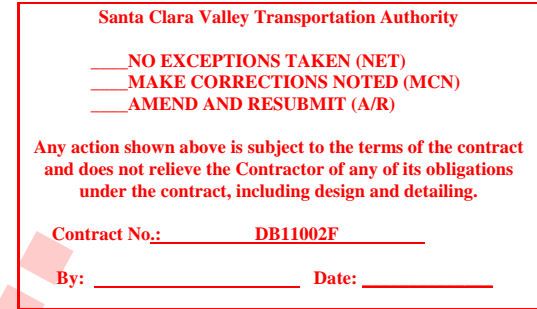
Contract No.: DB11002F

By: _____ Date: _____



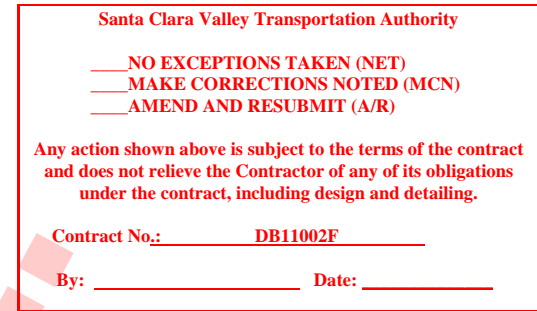
DESIGNED BY K. MULLER DRAWN BY K. MULLER CHECKED BY B. WAGNER IN CHARGE J. STREETER DATE 20130710				1436 California Circle Milpitas, California 95035 A Joint Venture		Lookwood, Andrews & Newman, Inc. A LEI A DALY COMPANY		T-Y LIN INTERNATIONAL		BART VTA SILICON VALLEY		LINE, TRACK, STATIONS AND SYSTEMS DESIGN UNIT 023 MILPITAS STATION COMPOSITE UTILITY PLAN		CADD FILENAME C700-S-DB-U110.dwg SIZE SCALE D 1"=20' CONTRACT NO. C700 AREA CODE DB		REV. 0 SHEET NO. U110 PAGE NO. 0078	
READINESS FOR CONSTRUCTION				SUBMITTED		APPROVED		BART SILICON VALLEY BERRYESSA EXTENSION		SHEET 1 OF 4							

1. FOR NOTES AND LEGEND, SEE DRAWING DB-U001.
2. ALL UTILITIES PREVIOUSLY ABANDONED OR TO BE ABANDONED WITH THIS CONTRACT SHALL BE REMOVED IF IN CONFLICT WITH WORK.
3. UTILITIES SHOWN OUTSIDE OF STATION AREA ARE FOR INFORMATION PURPOSES ONLY. FOR FURTHER INFORMATION, SEE DESIGN UNIT 012.
4. FOR ADDITIONAL DRAINAGE, SEE GRADING AND DRAINAGE SHEETS.



CADD FILENAME C700-S-DB-U111.dwg		
SIZE D	SCALE 1"=20'	
CONTRACT NO. C700		REV. 0
AREA CODE DB	SHEET NO. U111	PAGE NO. 0079

1. FOR NOTES AND LEGEND, SEE DRAWING DB-U001.
2. ALL UTILITIES PREVIOUSLY ABANDONED OR TO BE ABANDONED WITH THIS CONTRACT SHALL BE REMOVED IF IN CONFLICT WITH WORK.
3. UTILITIES SHOWN OUTSIDE OF STATION AREA ARE FOR INFORMATION PURPOSES ONLY. FOR FURTHER INFORMATION, SEE DESIGN UNIT 012.
4. FOR ADDITIONAL DRAINAGE, SEE GRADING AND DRAINAGE SHEETS.



Jun 26, 2013 - 10:01 AM

0

20130710

READINESS FOR CONSTRUCTION

REV

DATE

BY

SUB

APP

DESCRIPTION

DESIGNED BY
K. MULLER

DRAWN BY
K. MULLER

CHECKED BY
B. WAGNER

IN CHARGE
J. STREEPER

DATE
20130710

REGISTERED PROFESSIONAL ENGINEER
JOE STREEPER
No. 61445
STATE OF CALIFORNIA

Skanska
Shimmick
Herzog

1436 California Circle
Milpitas, California 95035
A Joint Venture

Lookwood, Andrews
& Newnam, Inc.
A LEED A RATED COMPANY

T-Y-LIN INTERNATIONAL

SUBMITTED

APPROVED

VTA

BART
SILICON VALLEY

BART SILICON VALLEY BERRYESSA EXTENSION

LINE, TRACK, STATIONS AND SYSTEMS
DESIGN UNIT 023
MILPITAS STATION
COMPOSITE UTILITY PLAN

SHEET 3 OF 4

CADD FILENAME
C700-S-DB-U112.dwg

SIZE D SCALE
1"=20'

CONTRACT NO.
C700

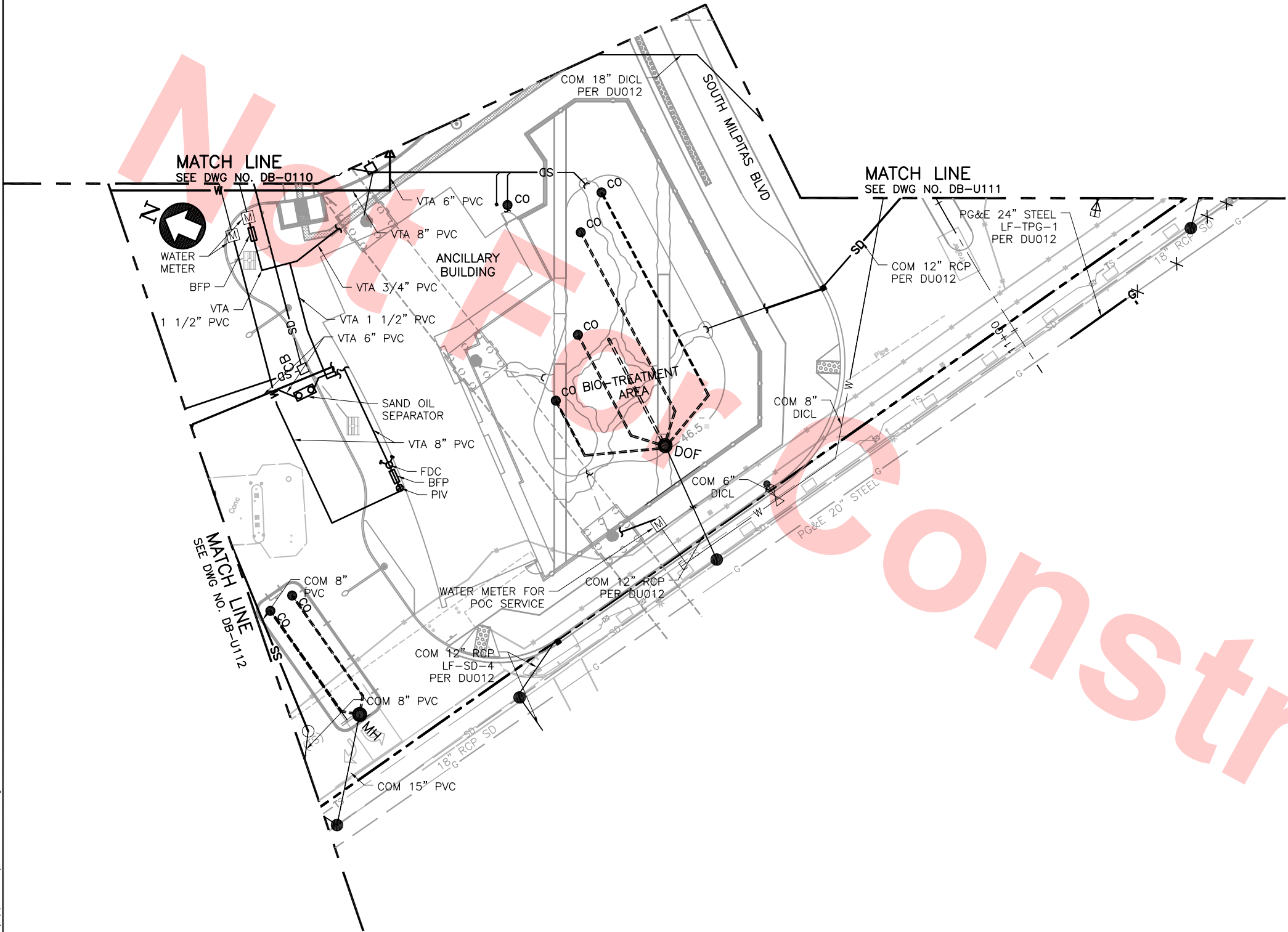
REV.
0

AREA CODE
DB

SHEET NO.
U112

PAGE NO.
0080

- NOTES:
1. FOR NOTES AND LEGEND, SEE DRAWING DB-U001.
 2. ALL UTILITIES PREVIOUSLY ABANDONED OR TO BE ABANDONED WITH THIS CONTRACT SHALL BE REMOVED IF IN CONFLICT WITH WORK.
 3. UTILITIES SHOWN OUTSIDE OF STATION AREA ARE FOR INFORMATION PURPOSES ONLY. FOR FURTHER INFORMATION, SEE DESIGN UNIT 012.
 4. FOR ADDITIONAL DRAINAGE, SEE GRADING AND DRAINAGE SHEETS.



PLAN

Santa Clara Valley Transportation Authority

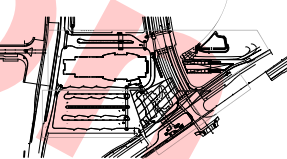
- NO EXCEPTIONS TAKEN (NET)
- MAKE CORRECTIONS NOTED (MCN)
- AMEND AND RESUBMIT (A/R)

Any action shown above is subject to the terms of the contract and does not relieve the Contractor of any of its obligations under the contract, including design and detailing.

Contract No.: DB11002F

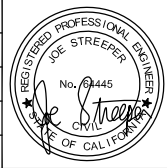
By: _____ Date: _____

KEY PLAN



REV	DATE	BY	SUB	APP	DESCRIPTION
0	20130710				READINESS FOR CONSTRUCTION

DESIGNED BY
K. MULLER
DRAWN BY
K. MULLER
CHECKED BY
B. WAGNER
IN CHARGE
J. STREEPER
DATE
20130710



Skanska
Shimmick
Herzog
SUBMITTED

1436 California Circle
Milpitas, California 95035
A Joint Venture
Lookwood, Andrews
& Newman, Inc.
T-Y LIN INTERNATIONAL
APPROVED



LINE, TRACK, STATIONS AND SYSTEMS
DESIGN UNIT 023
MILPITAS STATION
COMPOSITE UTILITY PLAN
SHEET 4 OF 4

CADD FILENAME C700-S-DB-U113.dwg	REV. 0
SIZE D	SCALE 1"=20'
CONTRACT NO. C700	SHEET NO. U113
AREA CODE DB	PAGE NO. 0081

NOTES:

1. FOR NOTES AND LEGEND, SEE DRAWING LM-U001.

2. STATION/OFFSET REFERS TO THE "S2" LINE UNLESS OTHERWISE NOTED.

3. SAND-OIL SEPARATORS SHALL BE JENSON JP320EE-SO OR APPROVED EQUAL.

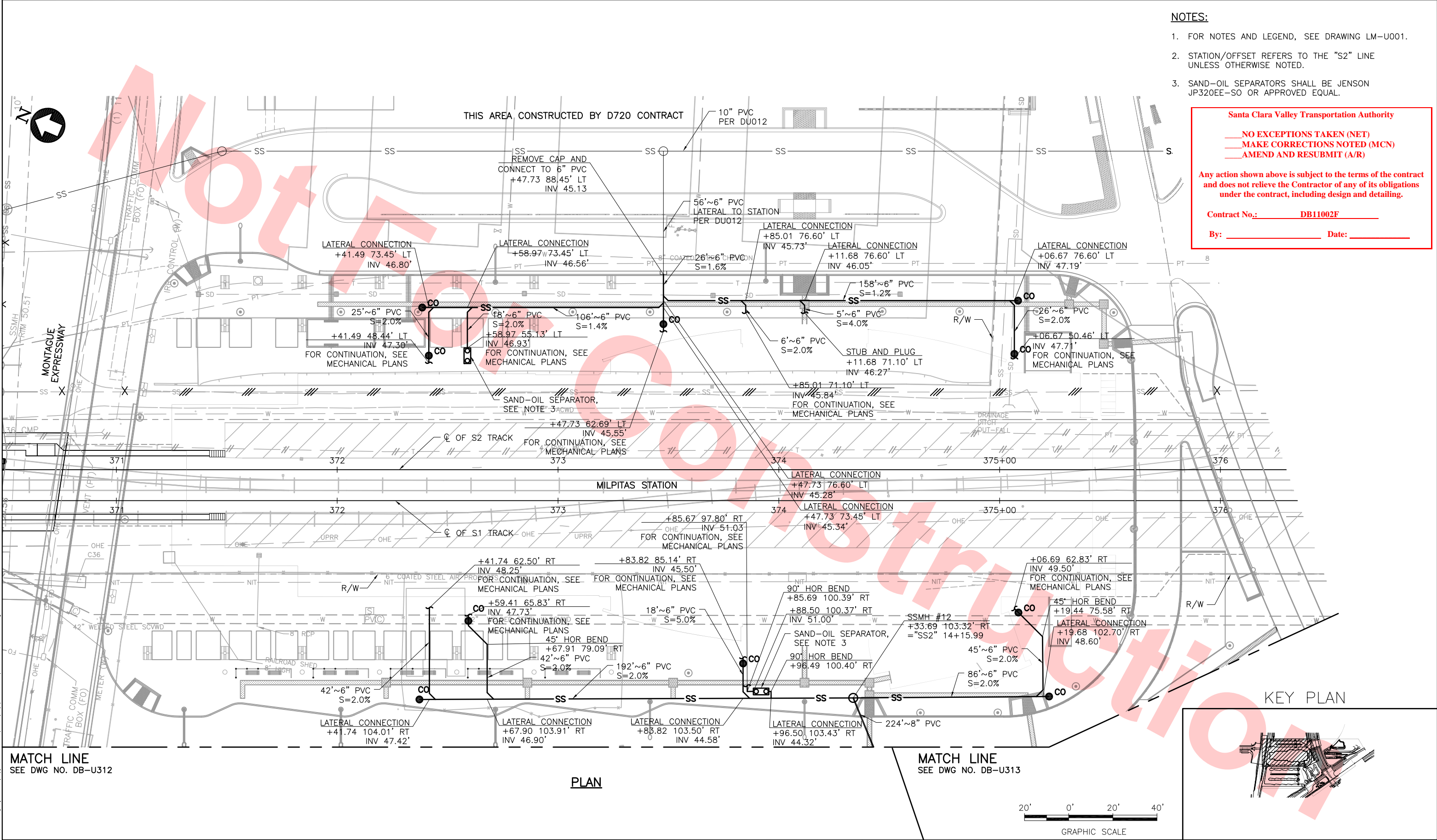
Santa Clara Valley Transportation Authority

NO EXCEPTIONS TAKEN (NET)
MAKE CORRECTIONS NOTED (MCN)
AMEND AND RESUBMIT (A/R)

Any action shown above is subject to the terms of the contract and does not relieve the Contractor of any of its obligations under the contract, including design and detailing.

Contract No.: DB11002F

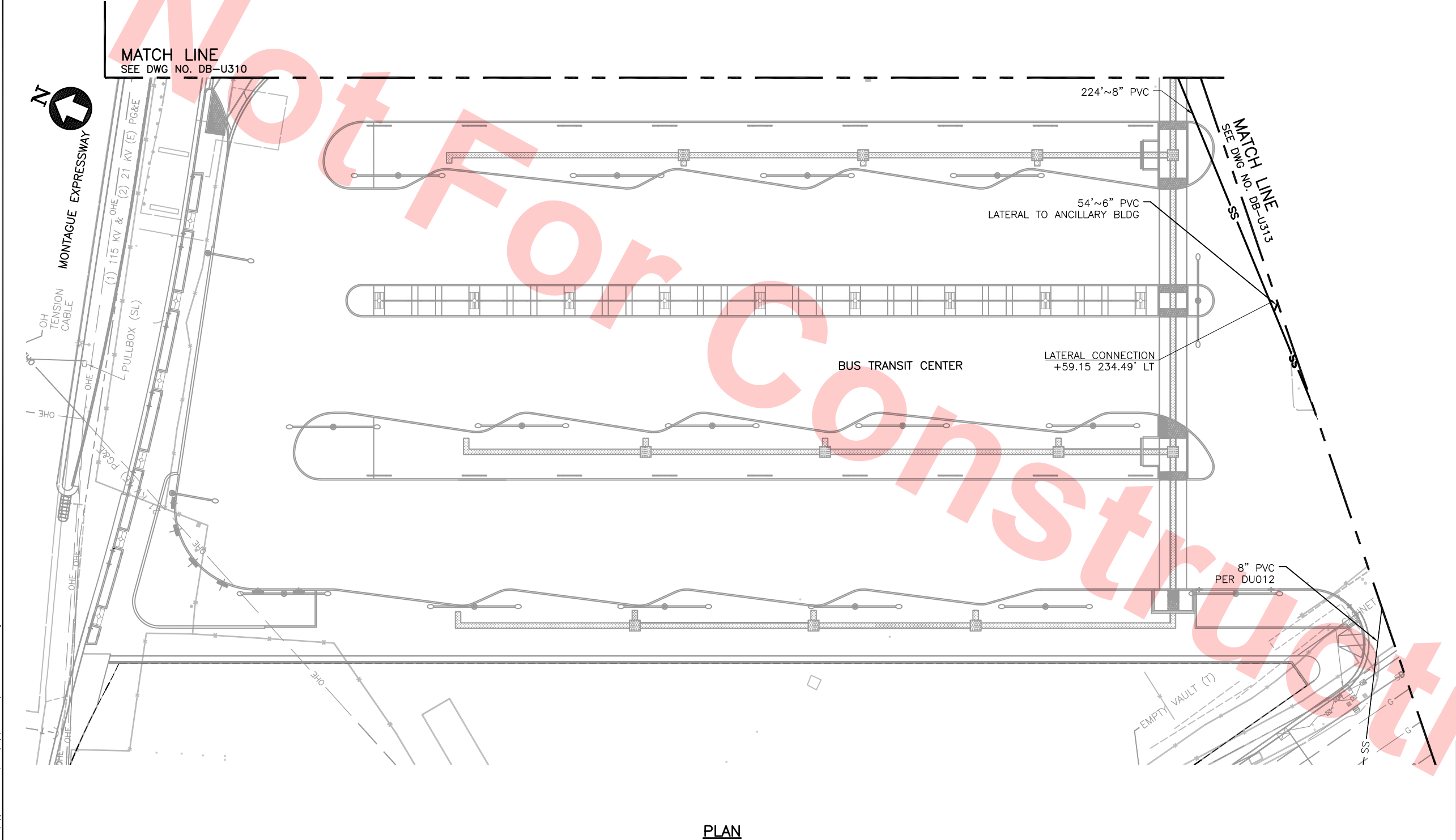
By: _____ Date: _____



						DESIGNED BY J. STREEPER		Skanska Shimmick Herzog	1436 California Circle Milpitas, California 95035 A Joint Venture	 T-Y LIN INTERNATIONAL	 BART SILICON VALLEY BERRYESSA EXTENSION	LINE, TRACK, STATIONS AND SYSTEMS DESIGN UNIT 023 MILPITAS STATION UTILITY RELOCATION PLAN (SANITARY SEWER)	CADD FILENAME C700-S-DB-U310.dwg						
						DRAWN BY K. MULLER							SIZE D	SCALE 1"=20'		CONTRACT NO. C700	REV. 0		
						CHECKED BY B. WAGNER											AREA CODE DB	SHEET NO. U310	PAGE NO. 0082
						IN CHARGE J. STREEPER													
0	20130710					DATE 20130710		SUBMITTED 	APPROVED 			SHEET 1 OF 3							
REV	DATE	BY	SUB	APP	DESCRIPTION														

Jun 26, 2013 - 9:02am C:\projects\BART\BERRYESSA\Drawings\U310-S-DB-U310.dwg
muller

- NOTES:
- FOR NOTES AND LEGEND, SEE DRAWING LM-U001.
 - STATION/OFFSET REFERS TO THE "CA1" LINE UNLESS OTHERWISE NOTED.



PLAN

Santa Clara Valley Transportation Authority

NO EXCEPTIONS TAKEN (NET)
MAKE CORRECTIONS NOTED (MCN)
AMEND AND RESUBMIT (A/R)

Any action shown above is subject to the terms of the contract and does not relieve the Contractor of any of its obligations under the contract, including design and detailing.



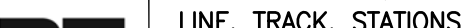
Contract No.: DB11002F

By: _____ Date: _____

KEY PLAN

20' 0' 20' 40'

GRAPHIC SCALE

						DESIGNED BY J. STREEPER		<div>Skanska Shimmick Herzog</div> <div>1436 California Circle Milpitas, California 95035 A Joint Venture</div>			<div>LOCKWOOD, ANDREWS & NEWMAN, INC. A LEO A. DALY COMPANY</div> <div>T-Y-LIN INTERNATIONAL</div>		LINE, TRACK, STATIONS AND SYSTEMS DESIGN UNIT 023 MILPITAS STATION UTILITY RELOCATION PLAN (SANITARY SEWER)		CADD FILENAME C700-S-DB-U312.dwg SIZE SCALE D 1"=20' CONTRACT NO. C700 AREA CODE SHEET NO. PAGE NO. DB U312 0083	
						DRAWN BY K. MULLER										
						CHECKED BY B. WAGNER										
						IN CHARGE J. STREEPER										
0	20130710				READINESS FOR CONSTRUCTION	DATE 20130710							SHEET 2 OF 3			
REV	DATE	BY	SUB	APP	DESCRIPTION											

Jun 26, 2013 - 9:21am C:\projects\mbox-template (28)\dms80477\C700-S-DB-U312.dwg

1. FOR NOTES AND LEGEND, SEE DRAWING LM-U001.
2. STATION/OFFSET REFERS TO THE "CA1" LINE UNLESS OTHERWISE NOTED.
3. SAND-OIL SEPARATORS SHALL BE JENSEN JP320EE-SO OR APPROVED EQUAL.



+12.22 222.46' LT
INV 46.82'
FOR CONTINUATION,
SEE MECHANICAL PLANS

+11.88 220.83' LT
INV 46.82'
FOR CONTINUATION,
SEE MECHANICAL PLANS

54'~6" PVC
LATERAL TO
ANCILLARY BLDG
S=10.0%

SAND OIL
SEPARATOR,
SEE NOTE 3

MATCH LINE
SEE DMG NO. DB-0312

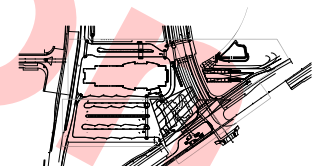
224' ~ 8" PVC

SSMH #11
+34.65 126.42 LT
="SS2" 11+91.66

8" PVC PER DU012

PLAN

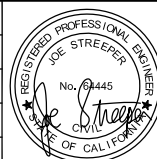
KEY PLAN



GRAPHIC SCALE

Jun 26, 2013 - muller						DESIGNED BY J. STREEPER
						DRAWN BY K. MULLER
						CHECKED BY B. WAGNER
						IN CHARGE J. STREEPER
	0	20130710			READINESS FOR CONSTRUCTION	DATE 20130710
REV	DATE	BY	SUB	APP	DESCRIPTION	

DESIGNED BY	J. STREEPER
DRAWN BY	K. MULLER
CHECKED BY	B. WAGNER
IN CHARGE	J. STREEPER
DATE	20130710



Skanska
Shimmick
Herzog

1436 California Circle
Milpitas, California 95035
A Joint Venture



SUBMITTED



APPROVED

T-Y-LIN INTERNATIONAL



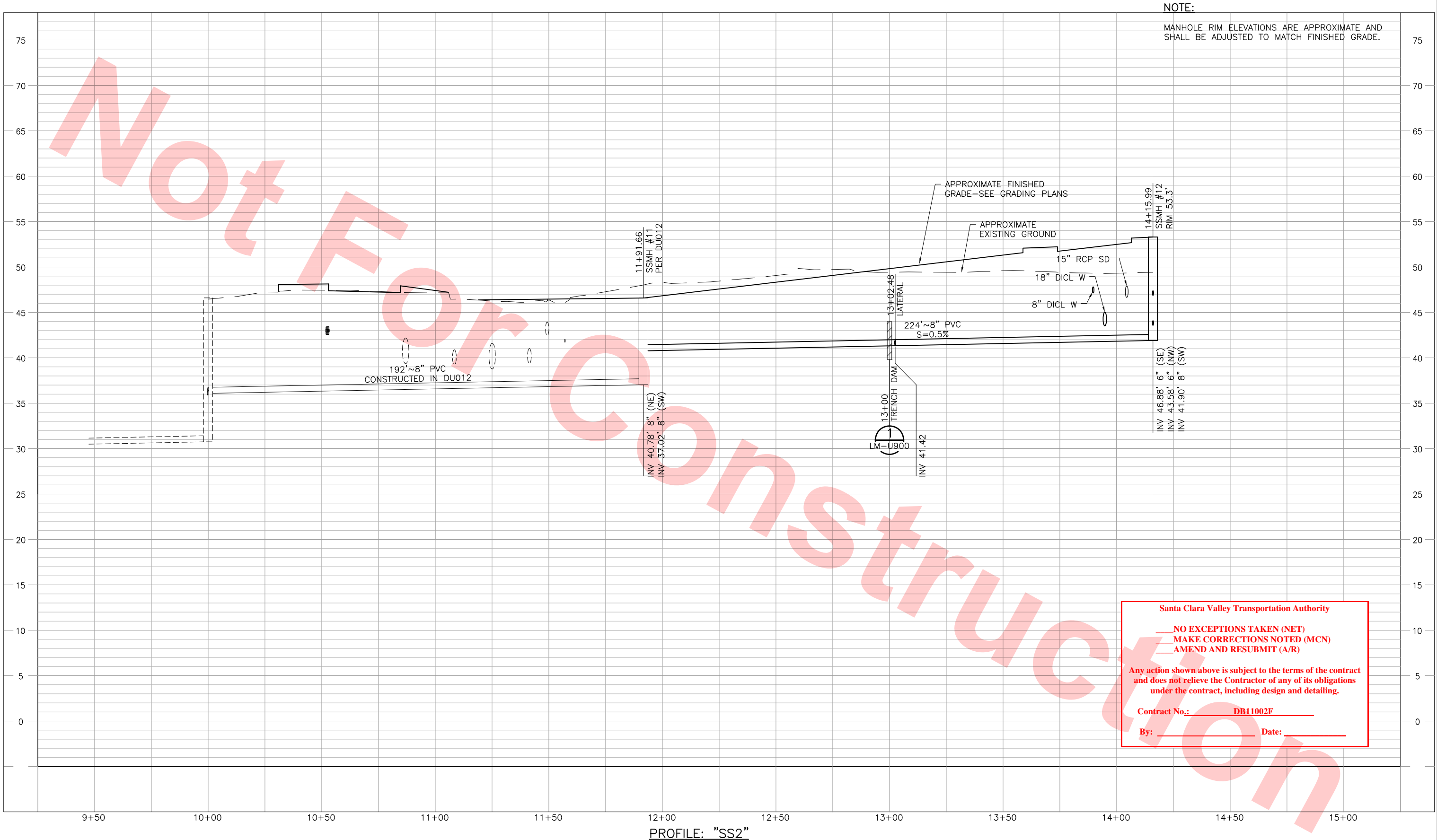
BART SILICON VALLEY BERRYESSA EXTENSION

LINE, TRACK, STATIONS AND SYSTEMS
DESIGN UNIT 023
MILPITAS STATION
UTILITY RELOCATION PLAN (SANITARY SEWER)

SHEET 3 OF 3

CADD FILENAME C700-S-DB-U313.dwg		
SIZE D	SCALE 1"=20'	
CONTRACT NO. C700		REV. 0
AREA CODE DB	SHEET NO. U313	PAGE NO. 0084

Jun 26, 2013 - 9:35am C:\projects\ss2\copy of mbs-template (28)\dms80477\CT00-S-DB-U330.dwg



Santa Clara Valley Transportation Authority

NO EXCEPTIONS TAKEN (NET)
MAKE CORRECTIONS NOTED (MCN)
AMEND AND RESUBMIT (A/R)

Any action shown above is subject to the terms of the contract and does not relieve the Contractor of any of its obligations under the contract, including design and detailing.

Contract No.: DB11002F

By: _____ Date: _____

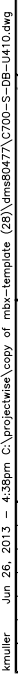
Jun 26, 2013 remiller																																																																																																																																																																																																																																																																																																																																																																																																																																																																																																																																																																																																																																																																																																																																																																																																																																																																																																																																																																																																																																																																																																																																																																																																																																																																																																																																																																																																																																																																																																																																																										
--------------------------	--	--	--	--	--	--	--	--	--	--	--	--	--	--	--	--	--	--	--	--	--	--	--	--	--	--	--	--	--	--	--	--	--	--	--	--	--	--	--	--	--	--	--	--	--	--	--	--	--	--	--	--	--	--	--	--	--	--	--	--	--	--	--	--	--	--	--	--	--	--	--	--	--	--	--	--	--	--	--	--	--	--	--	--	--	--	--	--	--	--	--	--	--	--	--	--	--	--	--	--	--	--	--	--	--	--	--	--	--	--	--	--	--	--	--	--	--	--	--	--	--	--	--	--	--	--	--	--	--	--	--	--	--	--	--	--	--	--	--	--	--	--	--	--	--	--	--	--	--	--	--	--	--	--	--	--	--	--	--	--	--	--	--	--	--	--	--	--	--	--	--	--	--	--	--	--	--	--	--	--	--	--	--	--	--	--	--	--	--	--	--	--	--	--	--	--	--	--	--	--	--	--	--	--	--	--	--	--	--	--	--	--	--	--	--	--	--	--	--	--	--	--	--	--	--	--	--	--	--	--	--	--	--	--	--	--	--	--	--	--	--	--	--	--	--	--	--	--	--	--	--	--	--	--	--	--	--	--	--	--	--	--	--	--	--	--	--	--	--	--	--	--	--	--	--	--	--	--	--	--	--	--	--	--	--	--	--	--	--	--	--	--	--	--	--	--	--	--	--	--	--	--	--	--	--	--	--	--	--	--	--	--	--	--	--	--	--	--	--	--	--	--	--	--	--	--	--	--	--	--	--	--	--	--	--	--	--	--	--	--	--	--	--	--	--	--	--	--	--	--	--	--	--	--	--	--	--	--	--	--	--	--	--	--	--	--	--	--	--	--	--	--	--	--	--	--	--	--	--	--	--	--	--	--	--	--	--	--	--	--	--	--	--	--	--	--	--	--	--	--	--	--	--	--	--	--	--	--	--	--	--	--	--	--	--	--	--	--	--	--	--	--	--	--	--	--	--	--	--	--	--	--	--	--	--	--	--	--	--	--	--	--	--	--	--	--	--	--	--	--	--	--	--	--	--	--	--	--	--	--	--	--	--	--	--	--	--	--	--	--	--	--	--	--	--	--	--	--	--	--	--	--	--	--	--	--	--	--	--	--	--	--	--	--	--	--	--	--	--	--	--	--	--	--	--	--	--	--	--	--	--	--	--	--	--	--	--	--	--	--	--	--	--	--	--	--	--	--	--	--	--	--	--	--	--	--	--	--	--	--	--	--	--	--	--	--	--	--	--	--	--	--	--	--	--	--	--	--	--	--	--	--	--	--	--	--	--	--	--	--	--	--	--	--	--	--	--	--	--	--	--	--	--	--	--	--	--	--	--	--	--	--	--	--	--	--	--	--	--	--	--	--	--	--	--	--	--	--	--	--	--	--	--	--	--	--	--	--	--	--	--	--	--	--	--	--	--	--	--	--	--	--	--	--	--	--	--	--	--	--	--	--	--	--	--	--	--	--	--	--	--	--	--	--	--	--	--	--	--	--	--	--	--	--	--	--	--	--	--	--	--	--	--	--	--	--	--	--	--	--	--	--	--	--	--	--	--	--	--	--	--	--	--	--	--	--	--	--	--	--	--	--	--	--	--	--	--	--	--	--	--	--	--	--	--	--	--	--	--	--	--	--	--	--	--	--	--	--	--	--	--	--	--	--	--	--	--	--	--	--	--	--	--	--	--	--	--	--	--	--	--	--	--	--	--	--	--	--	--	--	--	--	--	--	--	--	--	--	--	--	--	--	--	--	--	--	--	--	--	--	--	--	--	--	--	--	--	--	--	--	--	--	--	--	--	--	--	--	--	--	--	--	--	--	--	--	--	--	--	--	--	--	--	--	--	--	--	--	--	--	--	--	--	--	--	--	--	--	--	--	--	--	--	--	--	--	--	--	--	--	--	--	--	--	--	--	--	--	--	--	--	--	--	--	--	--	--	--	--	--	--	--	--	--	--	--	--	--	--	--	--	--	--	--	--	--	--	--	--	--	--	--	--	--	--	--	--	--	--	--	--	--	--	--	--	--	--	--	--	--	--	--	--	--	--	--	--	--	--	--	--	--	--	--	--	--	--	--	--	--	--	--	--	--	--	--	--	--	--	--	--	--	--	--	--	--	--	--	--	--	--	--	--	--	--	--	--	--	--	--	--	--	--	--	--	--	--	--	--	--	--	--	--	--	--	--	--	--	--	--	--	--	--	--	--	--	--	--	--	--	--	--	--	--	--	--	--	--	--	--	--	--	--	--	--	--	--	--	--	--	--	--	--	--	--	--	--	--	--	--	--	--	--	--	--	--	--	--	--	--	--	--	--	--	--	--	--	--	--	--	--	--	--	--	--	--	--	--	--	--	--	--	--	--	--	--	--	--	--	--	--	--	--	--	--	--	--	--	--	--	--	--	--	--	--	--	--	--	--	--	--	--	--	--	--	--	--	--	--	--	--	--	--	--	--	--	--	--	--	--	--	--	--	--	--	--	--	--	--	--	--	--	--	--	--	--	--	--	--	--	--	--	--	--	--	--	--	--	--	--	--	--	--	--	--	--	--	--	--	--	--	--	--	--	--	--	--	--	--	--	--	--	--	--	--	--	--	--	--	--	--	--	--	--	--	--	--	--	--	--	--	--	--	--	--	--	--	--	--	--	--	--	--	--	--	--	--	--	--	--	--	--	--	--	--	--	--	--	--	--	--	--	--	--	--	--	--	--	--	--	--	--	--	--	--	--	--	--	--	--	--	--	--	--	--	--	--	--	--	--	--	--	--	--	--	--	--	--	--	--	--	--	--	--	--	--	--	--	--	--	--	--	--	--	--	--	--	--	--	--	--	--	--	--	--	--	--	--	--	--	--	--	--	--	--	--	--	--	--	--	--	--	--	--	--	--	--	--	--	--	--	--	--	--	--	--	--	--	--	--	--	--	--	--	--	--	--	--	--	--	--	--	--	--	--	--	--	--	--	--	--	--	--	--	--	--	--	--	--	--	--	--	--	--	--	--	--	--	--	--	--	--	--	--	--	--	--	--	--	--	--	--	--	--	--	--	--	--	--	--	--	--	--	--	--	--	--	--	--	--	--	--	--	--	--	--	--	--	--	--	--	--	--	--	--	--	--	--	--	--	--	--	--	--	--	--	--	--	--	--	--	--	--	--	--	--	--	--	--	--	--	--	--	--	--	--	--	--	--	--	--	--	--	--	--	--	--	--	--	--	--	--	--	--	--	--	--	--	--	--	--	--	--	--	--	--	--	--	--	--	--	--	--	--	--	--	--	--	--	--	--	--	--	--	--	--	--	--	--	--	--	--	--	--	--	--	--	--	--	--	--	--	--	--	--	--	--	--	--	--	--	--	--	--	--	--	--	--	--	--	--	--	--	--	--	--	--	--





FOR NOTES AND LEGEND, SEE DRAWING LM-U001.

☐ NO EXCEPTIONS TAKEN (NET)
☐ MAKE CORRECTIONS NOTED (MCN)
☐ AMEND AND RESUBMIT (A/R)

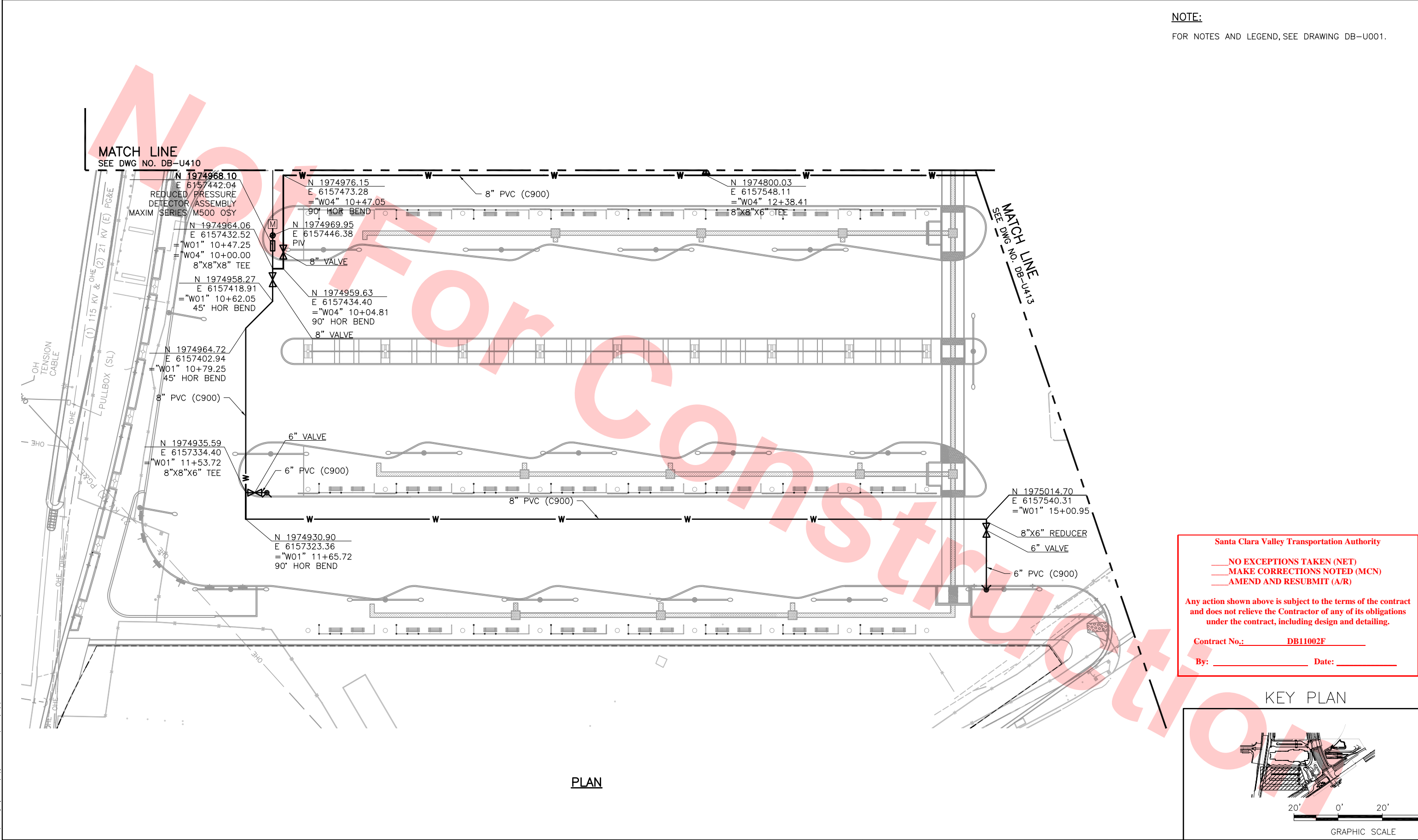
Contract No.: DB11002F

By: _____ **Date:** _____



Jun 26, 2013 kmuller						DESIGNED BY J. STREEPER		Skanska Shimmick Herzog 1436 California Circle Milpitas, California 95035 A Joint Venture	 BART SILICON VALLEY	LINE, TRACK, STATIONS AND SYSTEMS DESIGN UNIT 023 MILPITAS STATION UTILITY RELOCATION PLAN (WATER AND FIRE)	CADD FILENAME C700-S-DB-U410.dwg
						DRAWN BY K. MULLER					SIZE D SCALE 1"=20'
						CHECKED BY B. WAGNER					CONTRACT NO. C700
						IN CHARGE J. STREEPER					REV. 0
	0	20130710				READINESS FOR CONSTRUCTION					DATE 20130710
	REV	DATE	BY	SUB	APP	DESCRIPTION		SUBMITTED 	APPROVED 		PAGE NO. 0086

NOTE:
FOR NOTES AND LEGEND, SEE DRAWING DB-U001.



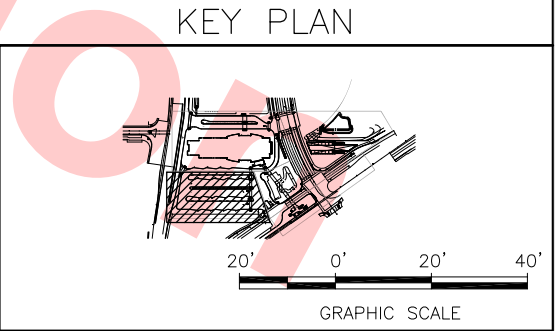
Santa Clara Valley Transportation Authority



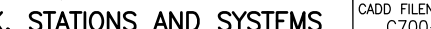


NO EXCEPTIONS TAKEN (NET)
MAKE CORRECTIONS NOTED (MCN)
AMEND AND RESUBMIT (A/R)

Any action shown above is subject to the terms of the contract and does not relieve the Contractor of any of its obligations under the contract, including design and detailing.

Contract No.: DB11002F

By: _____ Date: _____



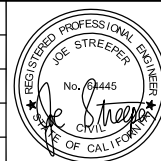
						DESIGNED BY J. STREEPER		Skanska Shimmick Herzog	1436 California Circle Milpitas, California 95035 A Joint Venture			LINE, TRACK, STATIONS AND SYSTEMS DESIGN UNIT 023 MILPITAS STATION UTILITY RELOCATION PLAN (WATER & FIRE)	CADD FILENAME C700-S-DB-U412.dwg				
					DRAWN BY K. MULLER	SIZE D							SCALE	1"=20'	CONTRACT NO. C700	REV.	
					CHECKED BY B. WAGNER												AREA CODE DB
0	20130710				READINESS FOR CONSTRUCTION	IN CHARGE J. STREEPER											
REV	DATE	BY	SUB	APP	DESCRIPTION	DATE											
						20130710		SUBMITTED 	APPROVED 								

Jun 26, 2013 - 4:43pm C:\projects\csc\copy of mbs-template (28)\dms80477\C700-S-DB-U412.dwg
k.muller

FOR NOTES AND LEGEND, SEE DRAWING LM-U001.



DESIGNED BY	J. STREEPER
DRAWN BY	K. MULLER
CHECKED BY	B. WAGNER
IN CHARGE	J. STREEPER
DATE	20130710



Skanska
Shimmick
Herzog

1436 California Circle
Milpitas, California 95035
A Joint Venture



T-Y-LIN INTERNATIONAL



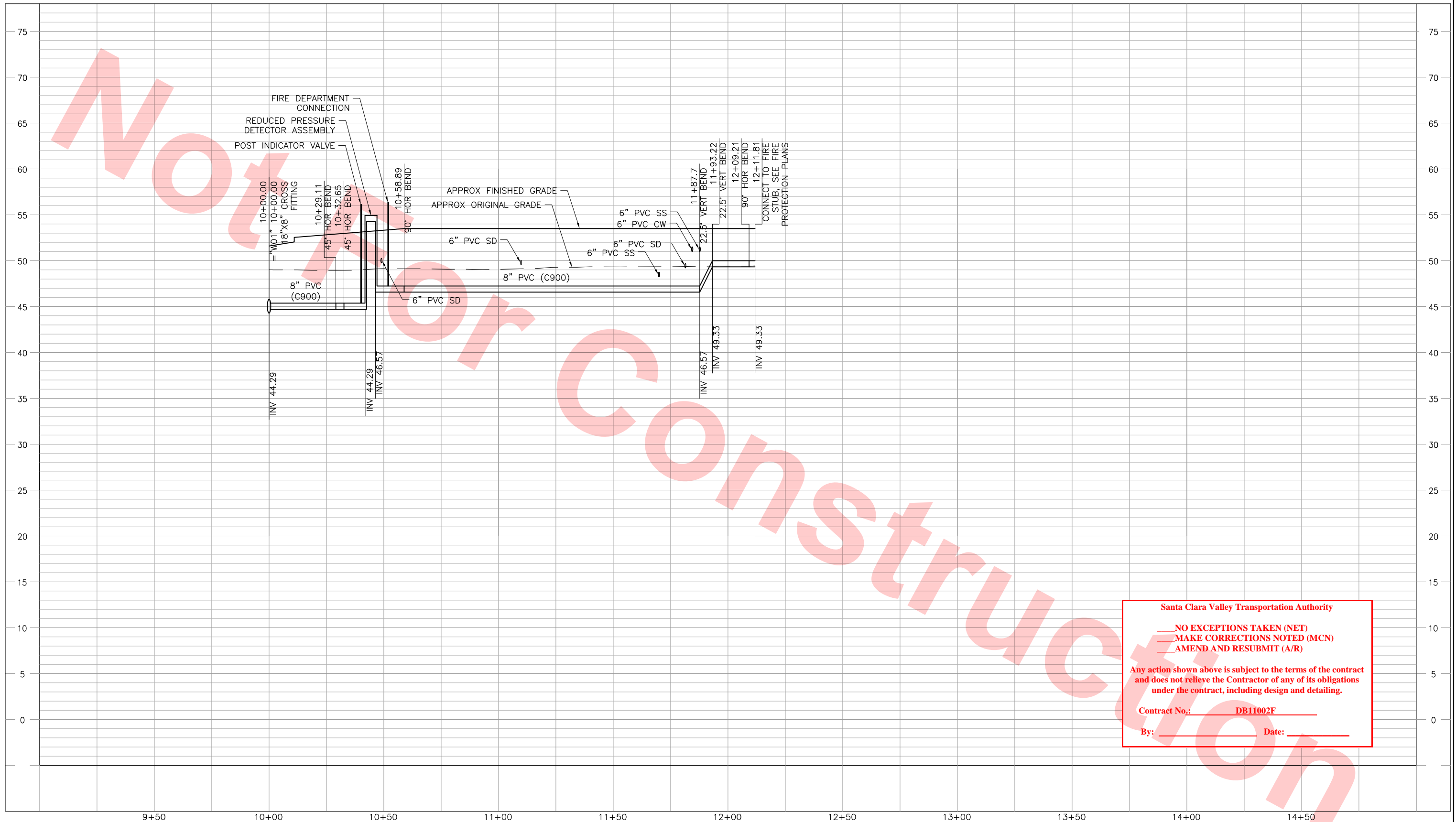
BART SILICON VALLEY BERRYESSA EXTENSION

LINE, TRACK, STATIONS AND SYSTEMS
DESIGN UNIT 023
MILPITAS STATION
UTILITY RELOCATION PLAN (WATER & FIRE)

SHEET 3 OF 3

CADD FILENAME C700-S-DB-U413.dwg		
SIZE D	SCALE 1"=20'	
CONTRACT NO. C700		REV. 0
AREA CODE DB	SHEET NO. U413	PAGE NO. 0088

Jun 26, 2013 - 3:40pm C:\projects\csc\copy of mbs-template (28)\dms80477\CT00-S-DB-U432.dwg



PROFILE: "W05"

Santa Clara Valley Transportation Authority


NO EXCEPTIONS TAKEN (NET)
MAKE CORRECTIONS NOTED (MCN)
AMEND AND RESUBMIT (A/R)

Any action shown above is subject to the terms of the contract and does not relieve the Contractor of any of its obligations under the contract, including design and detailing.

Contract No.: DB11002F

By: _____ Date: _____

REV	DATE	BY	SUB	APP	DESCRIPTION
0	20130710				READINESS FOR CONSTRUCTION

DESIGNED BY K. MULLER	
DRAWN BY K. MULLER	
CHECKED BY B. WAGNER	
IN CHARGE J. STREEPER	
DATE 20130710	

Skanska
Shimmick
Herzog

1436 California Circle
Milpitas, California 95035
A Joint Venture

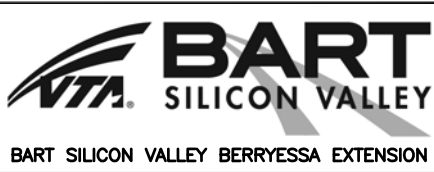
 HMM

SUBMITTED 

 Lookwood, Andrews
& Newman, Inc.
A LEO A DALY COMPANY

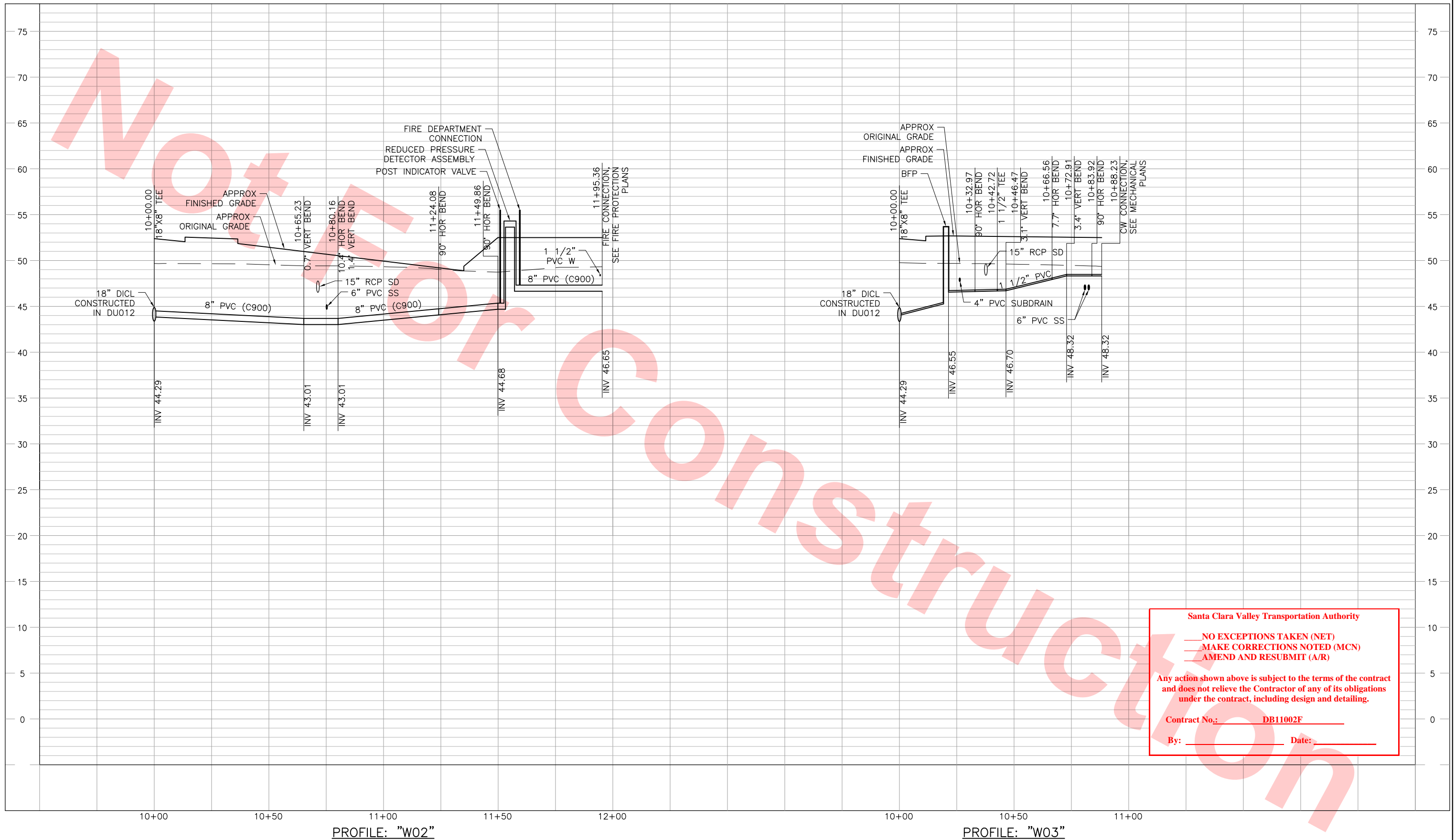
T-Y LIN INTERNATIONAL

APPROVED 



LINE, TRACK, STATIONS AND SYSTEMS DESIGN UNIT 023 MILPITAS STATION PROFILE - "W05" WATER & FIRE				CADD FILENAME C700-S-DB-U432.dwg
SIZE D	SCALE 1"=20' H; 1"=5' V	CONTRACT NO. C700	REV. 0	
AREA CODE DB	SHEET NO. U432	PAGE NO. 0091		

Jun 26, 2013 - 5:07pm C:\projects\csc\copy of mbs-template (28)\csc8477\c700-S-DB-U433.dwg
knuller



Santa Clara Valley Transportation Authority

NO EXCEPTIONS TAKEN (NET)
MAKE CORRECTIONS NOTED (MCN)
AMEND AND RESUBMIT (A/R)

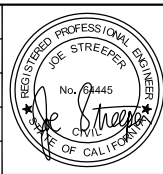
Any action shown above is subject to the terms of the contract and does not relieve the Contractor of any of its obligations under the contract, including design and detailing.

Contract No.: DB11002F

By: _____ Date: _____

REV	DATE	BY	SUB	APP	DESCRIPTION
0	20130710				READINESS FOR CONSTRUCTION

DESIGNED BY
K. MULLER
DRAWN BY
K. MULLER
CHECKED BY
B. WAGNER
IN CHARGE
J. STREEPER
DATE
20130710



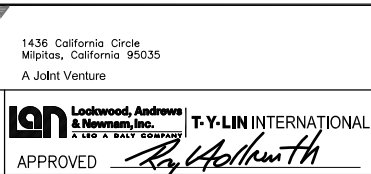
Skanska
Shimmick
Herzog

1436 California Circle
Milpitas, California 95035
A Joint Venture

Lookwood, Andrews
& Newman, Inc.
A LEO A DALY COMPANY

T-Y LIN INTERNATIONAL

SUBMITTED *[Signature]* APPROVED *[Signature]*



LINE, TRACK, STATIONS AND SYSTEMS
DESIGN UNIT 023
MILPITAS STATION
PROFILE - "W02" & "W03"
WATER & FIRE

CADD FILENAME C700-S-DB-U433.dwg	SIZE D 1"=20' H; 1"=5' V	CONTRACT NO. C700	REV. 0
AREA CODE DB	SHEET NO. U433	PAGE NO. 0092	

NO EXCEPTIONS TAKEN (NET)
MAKE CORRECTIONS NOTED (MCN)
AMEND AND RESUBMIT (A/R)

Any action shown above is subject to the terms of the contract and does not relieve the Contractor of any of its obligations under the contract, including design and detailing.

Contract No.: DB11002F

By: _____ **Date:** _____



1. CONTRACTOR TO PROVIDE FORMS AND CONSTRUCT TRENCH DAMS 18" TO 24" THICK.

TRENCH DAM

NTS

DB-U900

DB-U001

						DESIGNED BY J. STREEPER		Skanska Shimmick Herzog			1436 California Circle Milpitas, California 95035 A Joint Venture			LINE, TRACK, STATIONS AND SYSTEMS DESIGN UNIT 023 MILPITAS STATION DETAILS			CADD FILENAME C700-S-DB-U900.dwg				
						DRAWN BY J. STREEPER								SIZE D SCALE AS NOTED		CONTRACT NO. C700 REV. 0		AREA CODE DB SHEET NO. U900 PAGE NO. 0093			
						CHECKED BY B. WAGNER															
						IN CHARGE J. STREEPER															
0	20130710				READINESS FOR CONSTRUCTION	DATE 20130710			SUBMITTED 		APPROVED 		BART SILICON VALLEY BERRYESSA EXTENSION								
REV	DATE	BY	SUB	APP	DESCRIPTION																