

Skanska
Shimmick
Herzog

A Joint Venture in Association with LAN | TY Lin

SSH JV

Milpitas Station Design Unit 023 Readiness for Construction BFS-Architectural (Reference Drawings)

SVBX C700

Wednesday, July 10, 2013

HALF SIZE
COPY



TYLIN INTERNATIONAL
engineers | planners | scientists

ABBREVIATIONS

SYMBOLS

AC	ACRES	ENCL	ENCLOSURE	LKR	LOCKER	S	SOUTH OR SLOPE
ACOUS	ACOUSTICAL	EQ	EQUAL	LP	LOW POINT	SC	SOLID CORE
AD	AREA DRAIN	EQPT	EQUIPMENT	LT	LIGHT	SCD	SEAT COVER DISPENSER
ADJ	ADJUSTABLE	ESC	ESCALATOR	LTG	LIGHTING	SCHED	SCHEDULE
AFC	AUTOMATIC FARE COLLECTION	EW	EACH WAY	LWP	LOWER WORKING POINT	SD	SOAP DISPENSER
AL/ALUM	ALUMINUM	EXTG	EXISTING			SEC	SECTION
AP	ACCESS PANEL	EXP	EXPANSION			SF	SQUARE FEET
APPROX	APPROXIMATE	EXPO	EXPOSED			SHT	SHEET
ARCH	ARCHITECTURAL	EXT	EXTERIOR			SIM	SIMILAR
ASPH	ASPHALT			MAX	MAXIMUM	SND	SANITARY NAPKIN DISPENSER
				MECH	MECHANICAL	SNR	SANITARY NAPKIN RECEPTACLE
				MEM	MEMBRANE	SPEC	SPECIFICATION
				MET	METAL	SPKR	SPEAKER
				MFR	MANUFACTURER	SQ	SQUARE
				MH	MANHOLE	ST STL	STAINLESS STEEL
				MIN	MINIMUM	SS	SERVICE SINK
				MISC	MISCELLANEOUS	STA	STATION
				MO	MASONRY OPENING	STD	STANDARD
				MTD	MOUNTED	STL	STEEL
				MUL	MULLION	STOR	STORAGE
						STRL	STRUCTURAL
						SUSP	SUSPENDED
						SYM	SYMMETRICAL

REVISION CLOUD AROUND REVISION		5
WORK POINT, CONTROL POINT, OR DATUM POINT		
NEW SPOT ELEVATION	+ 986.5	
EXISTING SPOT ELEVATION	+ (986.5)	
TOP OF WALL		TW 15.0
TOP OF CURB		TC 16.0
TOP OF PAVEMENT		TP 15.4
MATCH LINE		
CENTER LINE		
PROPERTY LINE		
FENCE		
DIMENSION TICK		
LEADER ARROW		
CONCRETE MASONRY UNIT OR BRICK		
CONCRETE		
EARTH		
FINISHED STONE		
COMPOSITE PANEL		
INSULATION (BATT)		
INSULATION (RIGID)		
METAL		
PLYWOOD		
PRECAST CONCRETE		
SAND, GROUT, MORTAR		
TILE		
COLUMN LINE		
ROOM IDENTIFICATION		
ROOM NAME	JANITOR	
ROOM NO	P02	
DETAIL		
DETAIL IDENTIFICATION	4	
DWG WHERE DETAIL IS DRAWN	AD20	
REFERENCE BOUNDARY		
SECTION		
SECTION IDENTIFICATION	A	
DWG WHERE SECTION IS DRAWN	AD14	
EXTERIOR ELEVATION(S)		
ELEVATION ORIENTATION	N	
DWG WHERE ELEVATION IS DRAWN	AD10	
INTERIOR ELEVATION(S)		
ELEVATION IDENTIFICATION	1, 2, 3	
DWG WHERE ELEVATION IS DRAWN	AD16	
DOOR SYMBOL		
FLOOR LEVEL/AREA	P	
DOOR NO	02	

00	08/04				DRAWN PER BECO EM001151
REV.	DATE	BY	CHKD.	APP.	DESCRIPTION

THIS DRAWING IS INTENDED SOLELY FOR BART USE IN ORDER TO DESIGN, CONSTRUCT, ALTER, OR MAINTAIN ITS FACILITIES. BART DOES NOT RECOMMEND OR WARRANT USE OF THE DRAWING FOR ANY OTHER PURPOSE. USE OF THE DRAWING BEYOND THE INTENDED PURPOSE WILL BE AT USER'S OWN RISK.

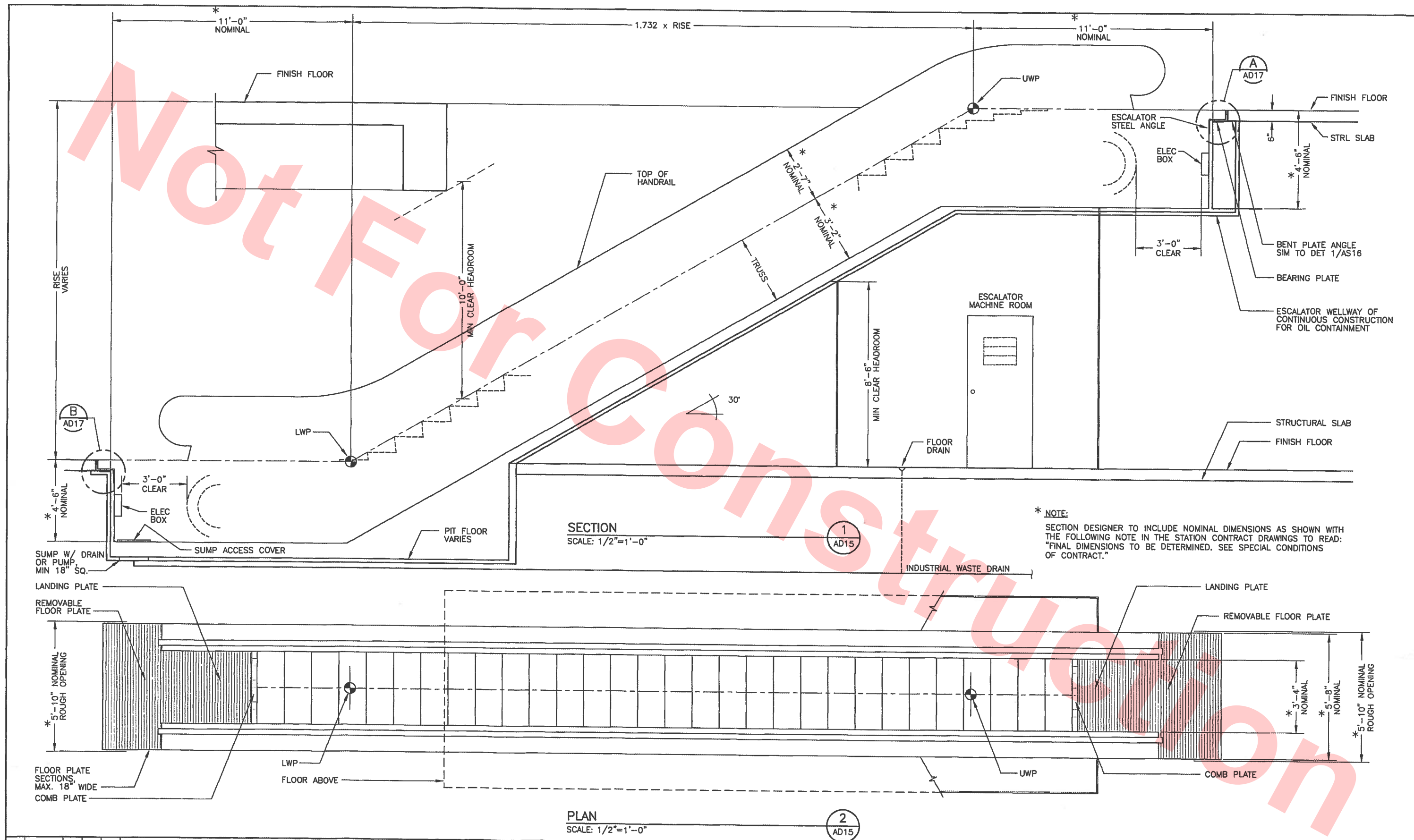



DESIGNED:	DATE:
DRAWN:	
CHECKED:	
APPROVED:	

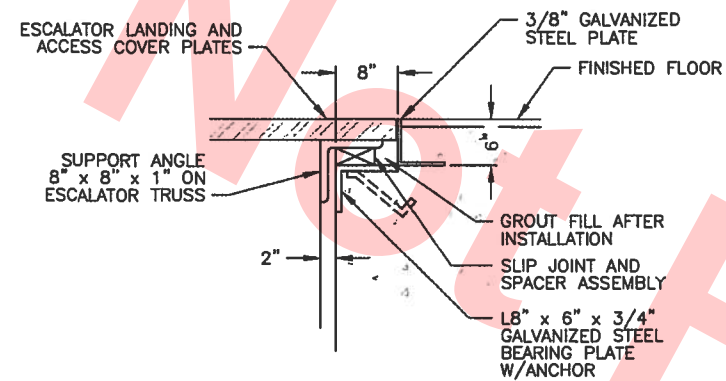
**BART FACILITIES STANDARDS
ARCHITECTURAL**

ABBREVIATIONS AND SYMBOLS

REF. NO.	
SIZE: D	SCALE: NONE
CONTRACT	REV. 00
SHEET NO. AS00	PG. NO. 1085

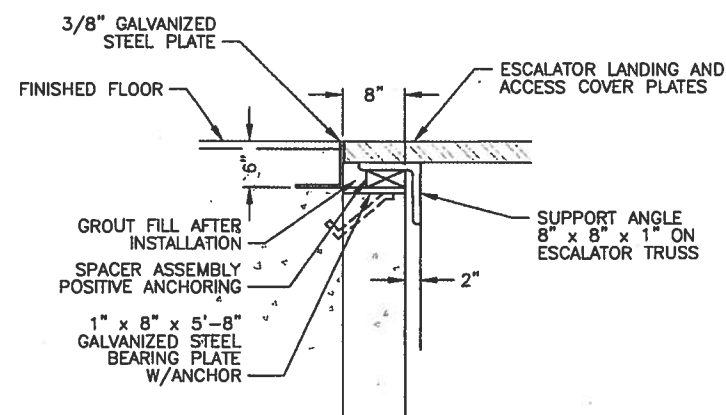


					THIS DRAWING IS INTENDED SOLELY FOR BART USE IN ORDER TO DESIGN, CONSTRUCT, ALTER, OR MAINTAIN ITS FACILITIES. BART DOES NOT RECOMMEND OR WARRANT USE OF THE DRAWING FOR ANY OTHER PURPOSE. USE OF THE DRAWING BEYOND THE INTENDED PURPOSE WILL BE AT USER'S OWN RISK.		ORIGINAL DRAWING BEARS THE REGISTERED PROFESSIONAL ENGINEER SEAL NO.: E014904 AND SIGNATURE OF: MARK ALAN PFEIFFER				DESIGNED: BATC DRAWN: <i>[Signature]</i> CHECKED: <i>[Signature]</i> APPROVED: <i>[Signature]</i>		DATE: 12/91 01/06 01/06 1-06		BART FACILITIES STANDARDS ARCHITECTURAL				REF. NO. AD15	
															ESCALATOR LAYOUT AND CLEARANCE DIAGRAM				SIZE: SCALE D NOTED	
																			CONTRACT	
																			REV. 01	
																			SHEET NO. AD15	
																			PG. NO. 1086	
01 01/06 2 <i>[Signature]</i> <i>[Signature]</i>					REVISED PER BECO EM001430															
REV. DATE BY SEAL APP.					DESCRIPTION															



DETAIL
SCALE: 1"=1'-0"

A
AD17

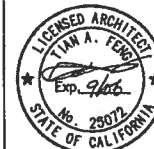


DETAIL
SCALE: 1"=1'-0"

B
AD17

REV.	DATE	BY	CHKD.	APP.	DESCRIPTION
00	08/04				DRAWN PER BECO EM001151

THIS DRAWING IS INTENDED SOLELY FOR BART USE IN ORDER TO DESIGN, CONSTRUCT, ALTER, OR MAINTAIN ITS FACILITIES. BART DOES NOT RECOMMEND OR WARRANT USE OF THE DRAWING FOR ANY OTHER PURPOSE. USE OF THE DRAWING BEYOND THE INTENDED PURPOSE WILL BE AT USER'S OWN RISK.

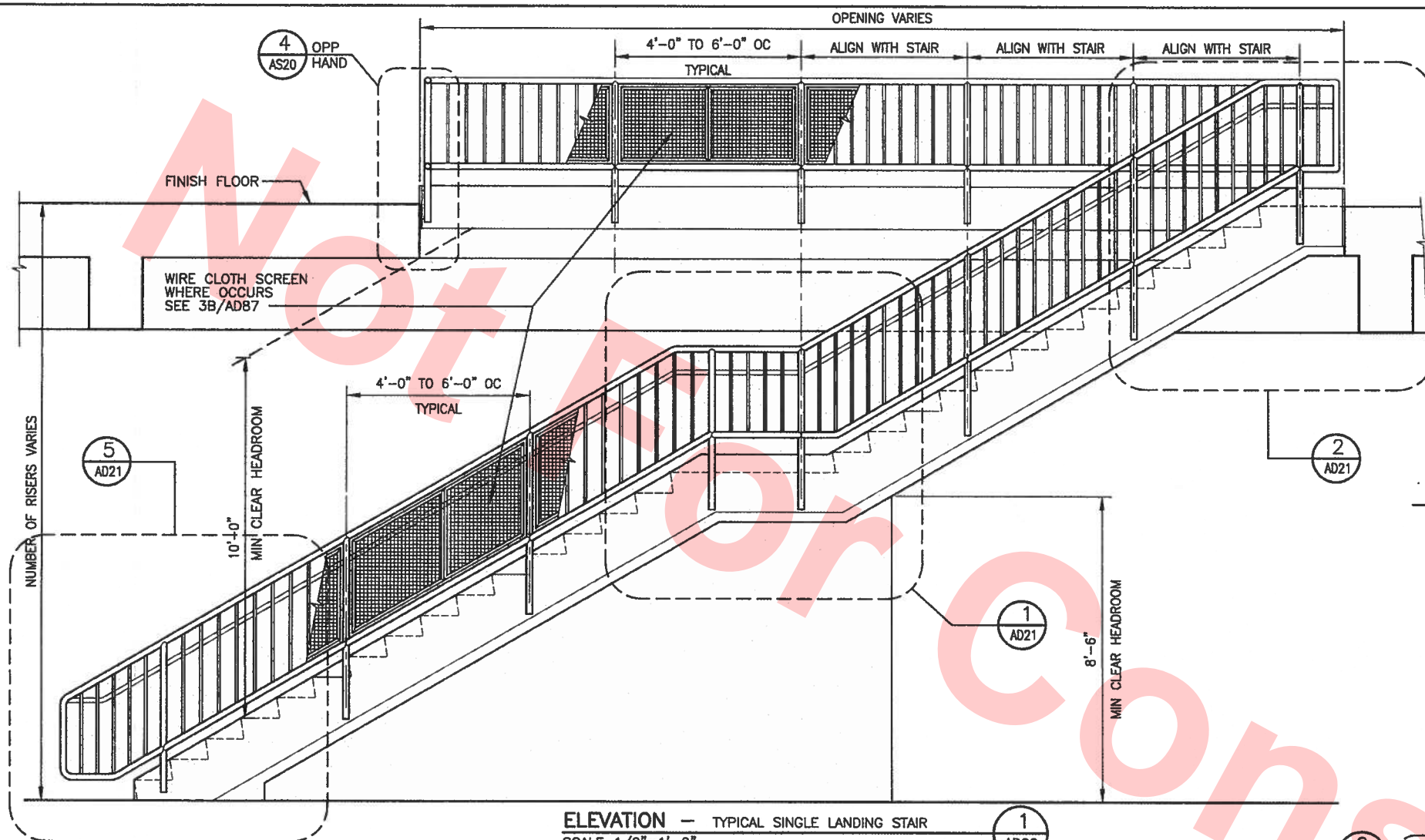


DESIGNED:	DATE:
DRAWN:	
CHECKED:	
APPROVED:	

**BART FACILITIES STANDARDS
ARCHITECTURAL**

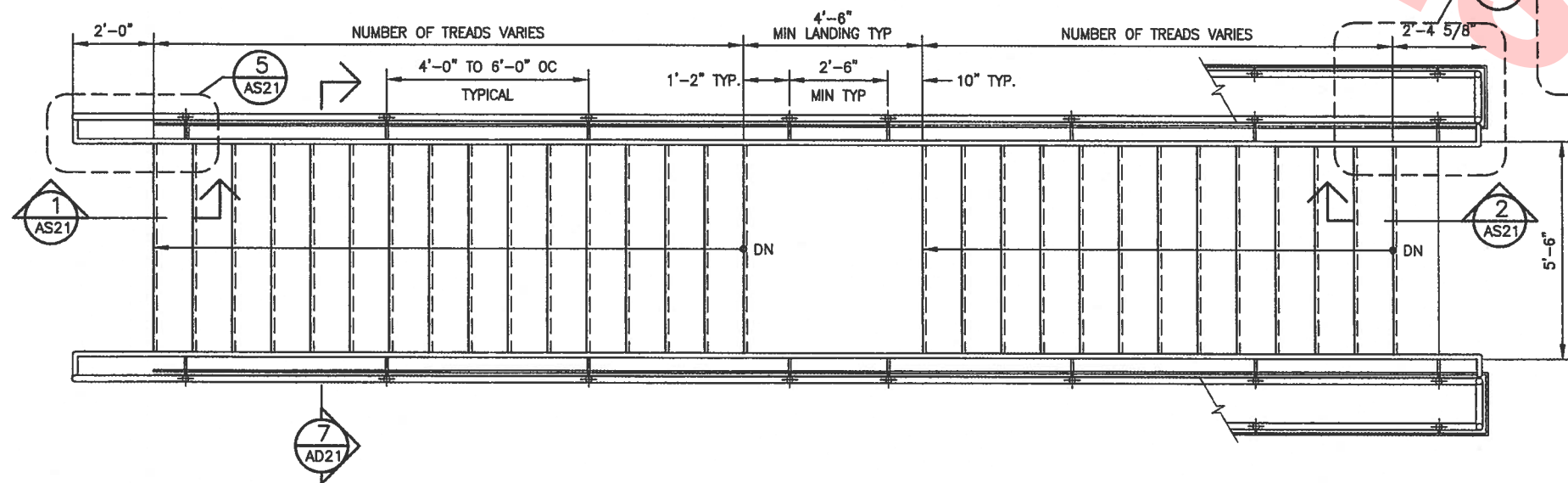
ESCALATOR
INSTALLATION DETAILS

REF. NO.	
SIZE: SCALE	NOTED
CONTRACT	REV. 00
SHEET NO. AD17	PG. NO. 1088



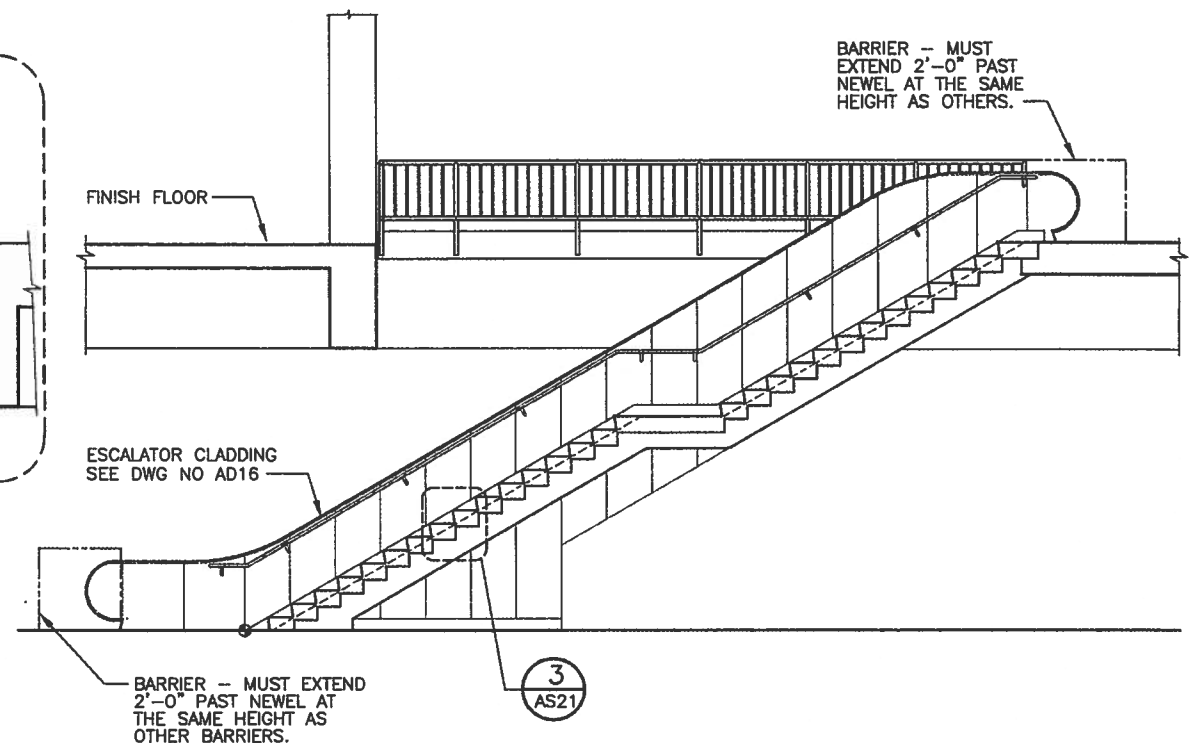
ELEVATION — TYPICAL SINGLE LANDING STAIR
SCALE: 1/2"=1'-0"

1
AD20



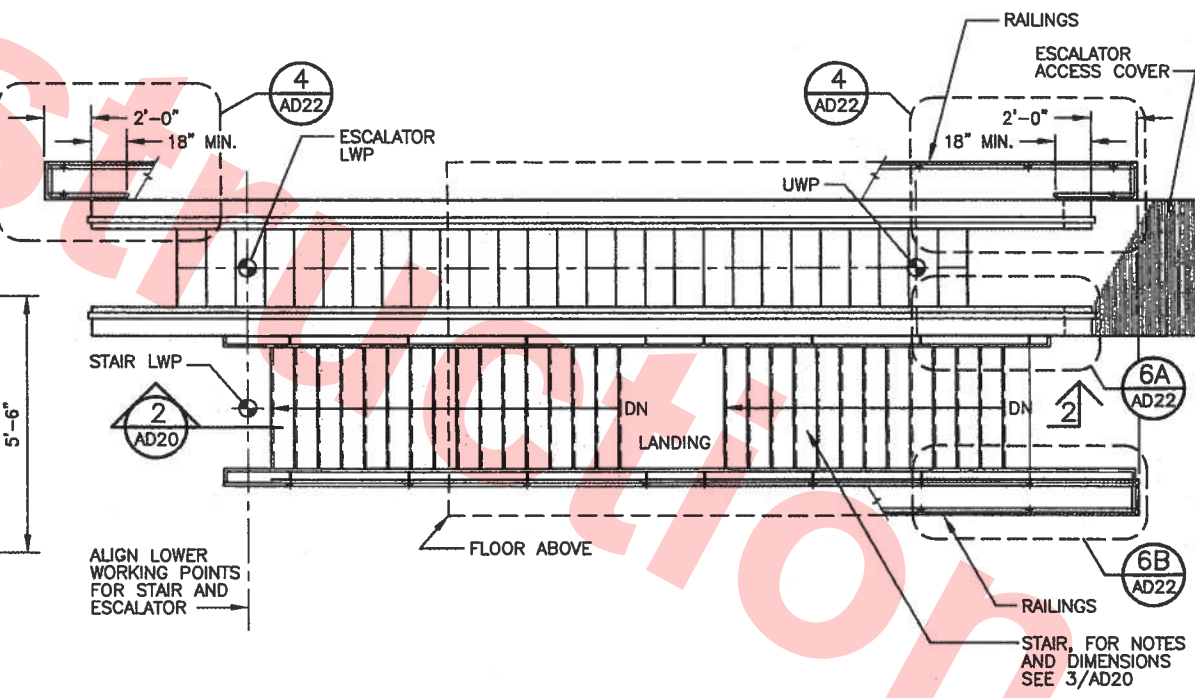
PLAN — TYPICAL SINGLE LANDING STAIR
SCALE: 1/2"=1'-0"

3
AD20



SECTION — STAIR SHOWING ESCALATOR BALUSTRADE
SCALE: 1/4"=1'-0"

2
AD20



PLAN — STAIR TO ADJACENT ESCALATOR
SCALE: 1/4"=1'-0"

4
AD20

REV	DATE	BY	APP	DESCRIPTION
01	09/08	REVISOR	REVISOR	REVISED PER BECO EM001531

THIS DRAWING IS INTENDED SOLELY FOR BART USE IN ORDER TO DESIGN, CONSTRUCT, ALTER, OR MAINTAIN ITS FACILITIES. BART DOES NOT RECOMMEND OR WARRANT USE OF THE DRAWING FOR ANY OTHER PURPOSE. USE OF THE DRAWING BEYOND THE INTENDED PURPOSE WILL BE AT USER'S OWN RISK.

ORIGINAL DRAWING BEARS THE REGISTERED ARCHITECT SEAL NO.: 25072 AND SIGNATURE OF: TIAN A. FENG

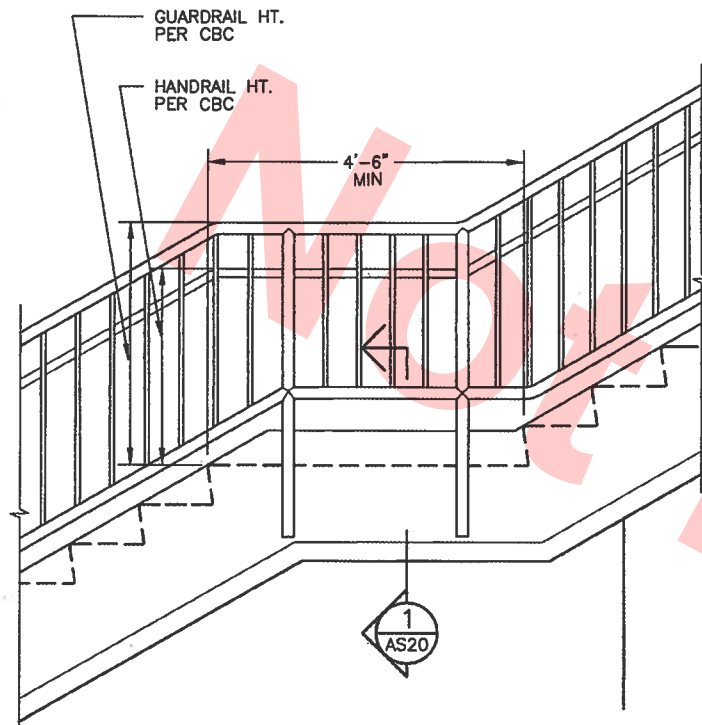


DESIGNED: BATC	DATE: 12/91
DRAWN: [Signature]	09/08
CHECKED: [Signature]	09/08
APPROVED: [Signature]	09/08

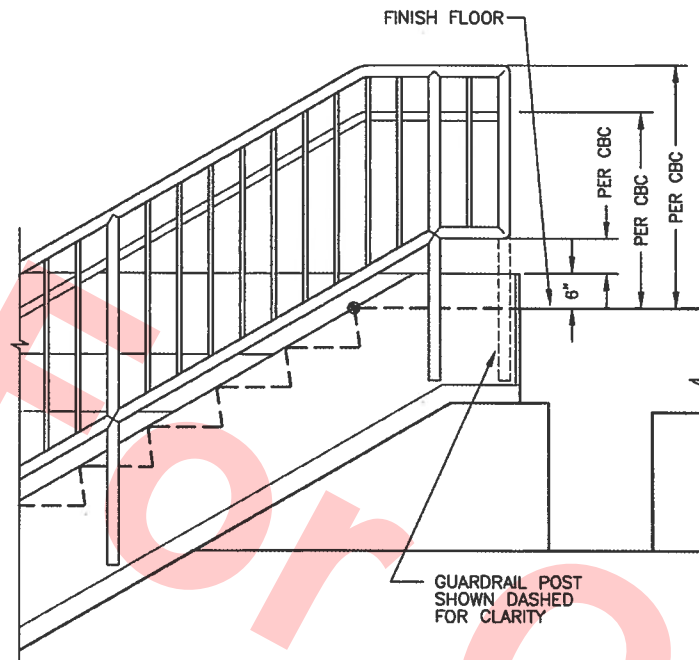
**BART FACILITIES STANDARDS
ARCHITECTURAL**

STAIR/HANDRAIL/GUARDRAIL

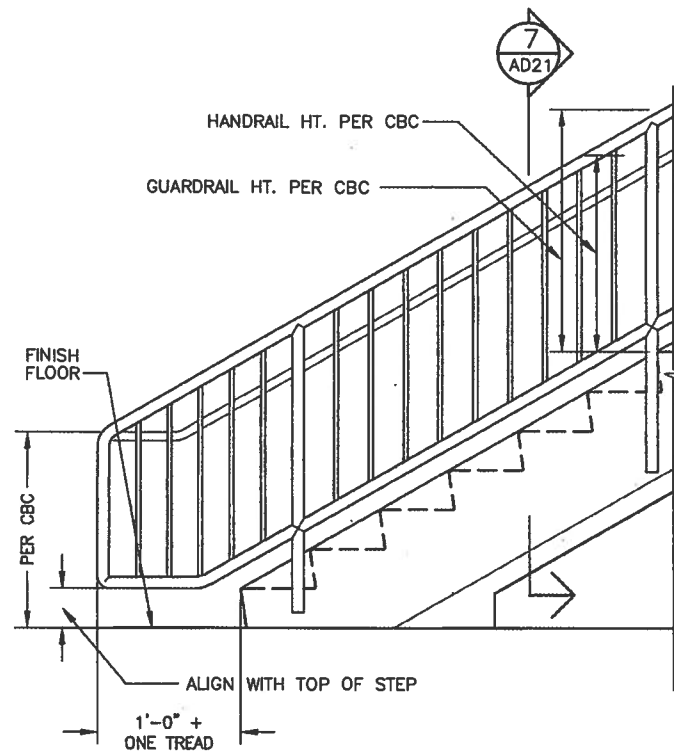
REF. NO. AD20	NOTED
CONTRACT	REV. 01
SHEET NO. AD20	PG. NO. 1089



DETAIL — ELEVATION • LANDING 1
SCALE: 3/4"=1'-0" AD21



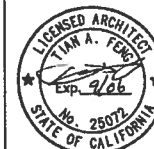
DETAIL — ELEVATION • TOP OF STAIR 2
SCALE: 3/4"=1'-0" AD21



DETAIL — ELEVATION • BOTTOM OF STAIR 5
SCALE: 3/4"=1'-0" AD21

REV.	DATE	BY	CHKD.	APP.	DESCRIPTION
00	08/04				DRAWN PER BECO EM001151

THIS DRAWING IS INTENDED SOLELY FOR BART USE IN ORDER TO DESIGN, CONSTRUCT, ALTER, OR MAINTAIN ITS FACILITIES. BART DOES NOT RECOMMEND OR WARRANT USE OF THE DRAWING FOR ANY OTHER PURPOSE. USE OF THE DRAWING BEYOND THE INTENDED PURPOSE WILL BE AT USER'S OWN RISK.

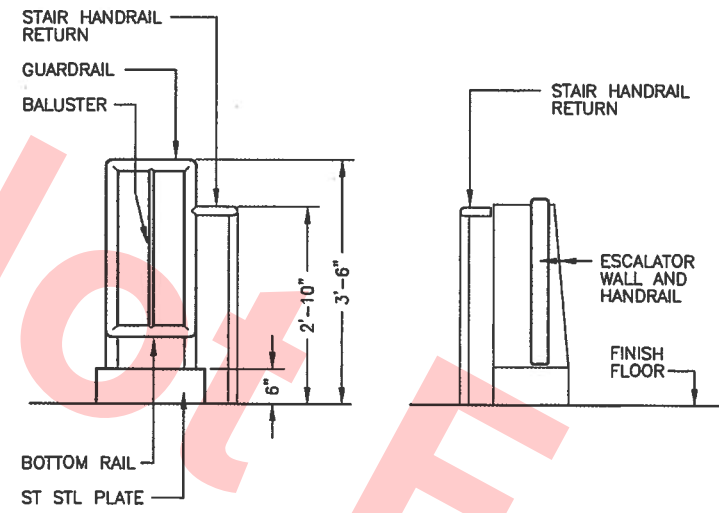


DESIGNED: BATC	DATE: 12/91
DRAWN:	
CHECKED:	
APPROVED:	

**BART FACILITIES STANDARDS
ARCHITECTURAL**

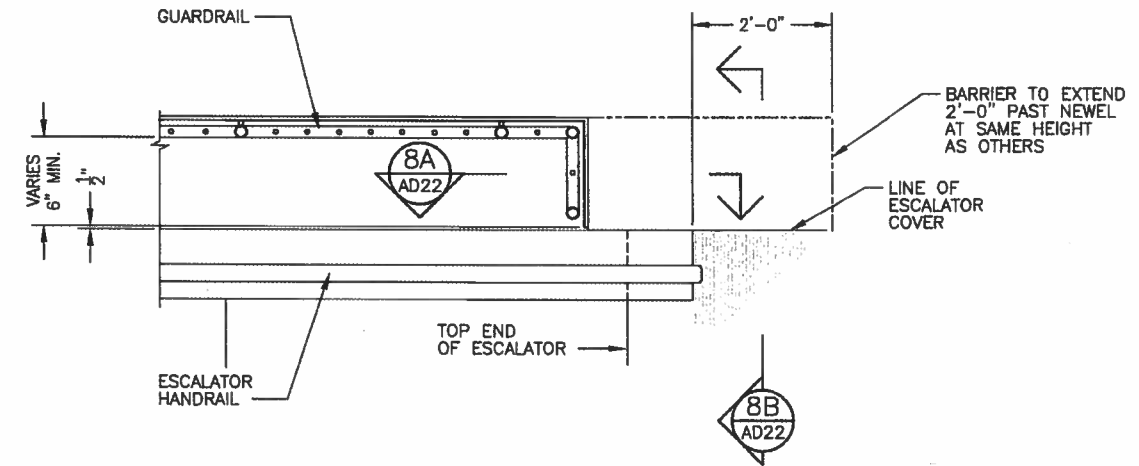
STAIR/HANDRAIL/GUARDRAIL

REF. NO. AD21	REV. 00
SIZE: SCALE D NOTED	
SHEET NO. AD21	PG. NO. 1090

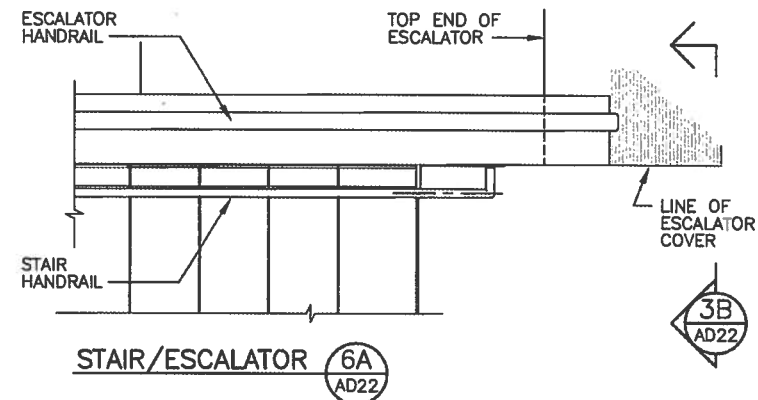


STAIR/GUARDRAIL (3A) AD22
STAIR/ESCALATOR (3B) AD22

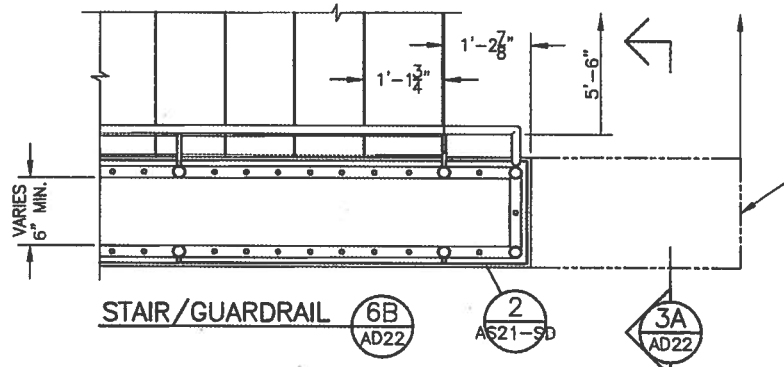
ELEVATIONS — TOP OF STAIR (3) AD22
SCALE: 3/4"=1'-0"



GUARDRAIL PLAN — ESCALATOR (4) AD22
SCALE: 3/4"=1'-0"

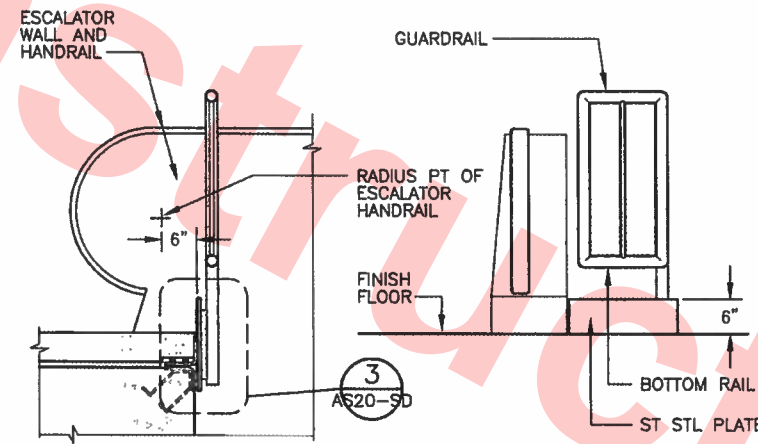


STAIR/ESCALATOR (6A) AD22



STAIR/GUARDRAIL (6B) AD22

PLANS — TOP OF STAIR (6) AD22
SCALE: 3/4"=1'-0"



SECTION (8A) AD22

ELEVATION (8B) AD22

GUARDRAIL — ESCALATOR (8) AD22
SCALE: 3/4"=1'-0"

REV.	DATE	BY	CHKD.	APP.	DESCRIPTION
00	08/04				DRAWN PER BECO EM001151

THIS DRAWING IS INTENDED SOLELY FOR BART USE IN ORDER TO DESIGN, CONSTRUCT, ALTER, OR MAINTAIN ITS FACILITIES. BART DOES NOT RECOMMEND OR WARRANT USE OF THE DRAWING FOR ANY OTHER PURPOSE. USE OF THE DRAWING BEYOND THE INTENDED PURPOSE WILL BE AT USER'S OWN RISK.

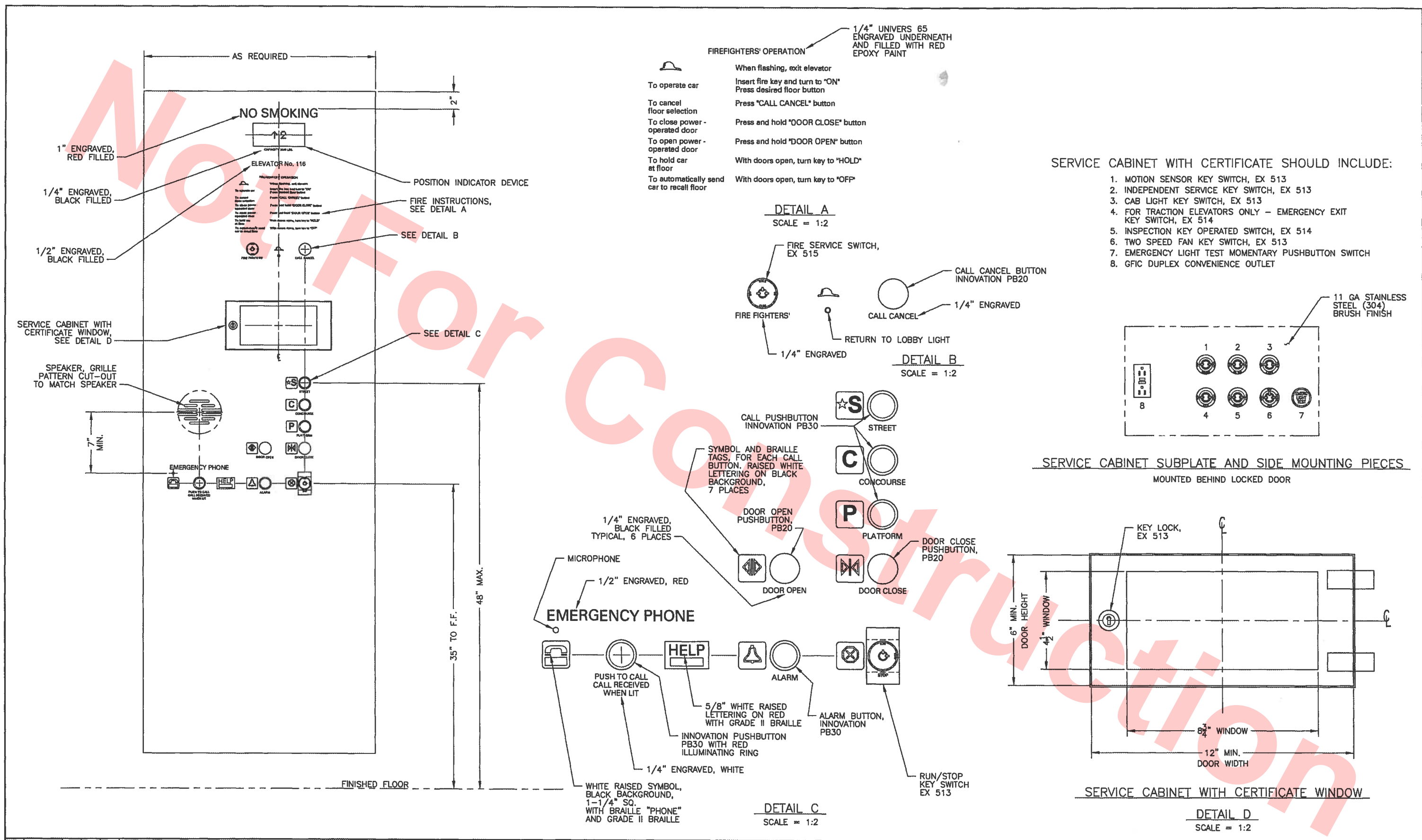


DESIGNED:	DATE:
DRAWN:	
CHECKED:	
APPROVED:	

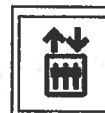
**BART FACILITIES STANDARDS
ARCHITECTURAL**

STAIR/HANDRAIL/GUARDRAIL

REF. NO.	
SIZE: SCALE	NOTED
CONTRACT	REV. 00
SHEET NO. AD22	PG. NO. 1091



01 REV. DATE BY DES. APP. REVISED PER BECO EM001430				THIS DRAWING IS INTENDED SOLELY FOR BART USE IN ORDER TO DESIGN, CONSTRUCT, ALTER, OR MAINTAIN ITS FACILITIES. BART DOES NOT RECOMMEND OR WARRANT USE OF THE DRAWING FOR ANY OTHER PURPOSE. USE OF THE DRAWING BEYOND THE INTENDED PURPOSE WILL BE AT USER'S OWN RISK.		ORIGINAL DRAWING BEARS THE REGISTERED ARCHITECT SEAL NO.: 25072 AND SIGNATURE OF: TIAN A. FENG		DESIGNED: BATC DATE: 03/94 DRAWN: <i>Shirley</i> 01/06 CHECKED: <i>John</i> 01/06 APPROVED: <i>John</i> 1-06		BART FACILITIES STANDARD ARCHITECTURAL ELEVATOR CAR OPERATING PANEL DETAILS		REF. NO. SIZE: SCALE D NOTED CONTRACT SHEET NO. AS08 PG. NO. 1093	
--	--	--	--	--	--	--	--	---	--	--	--	---	--



Elevator to BART

SEE NOTES 1 AND 2

ELEVATOR NAME PLATE,
2" WHITE LETTERS ON
BLACK BACKGROUND.

EL #XXX

SERVICE KEY SWITCH
(STREET ELEVATORS ONLY)

HALL LANTERN

MAINTENANCE
ACCESS KEY SWITCH

FLOOR DESTINATION SIGN
WITH BRAILLE, 2 PLACES

HANDS-FREE WHITE
COURTESY PHONE
SEE DWG. AS11

ELEVATOR TACTILE SIGN,
SEE DETAIL "C"
MIN. 18" x 18"
SEE NOTE 1

HALL CALL
STATION SIGN,
SEE DWG. AS10

84" MIN
CLEAR OPENING

68"
TYP

42"

FINISHED FLOOR

18"

11"
MIN, TYP

42" MIN
CLEAR OPENING

60"
TYP

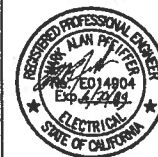
72"

NOTES:

1. THIS SIGN IS REQUIRED IN STATION ELEVATORS ONLY.
2. AT PLATFORM ELEVATOR ENTRANCE, SIGN SHALL READ "ELEVATOR".

00	09/08	GL	AP	DR	DRAWN PER BECO EM001368
REV.	DATE	BY	CHK	APP.	DESCRIPTION

THIS DRAWING IS INTENDED SOLELY FOR
BART USE IN ORDER TO DESIGN,
CONSTRUCT, ALTER, OR MAINTAIN ITS
FACILITIES. BART DOES NOT RECOMMEND
OR WARRANT USE OF THE DRAWING FOR
ANY OTHER PURPOSE. USE OF THE
DRAWING BEYOND THE INTENDED PURPOSE
WILL BE AT USER'S OWN RISK.

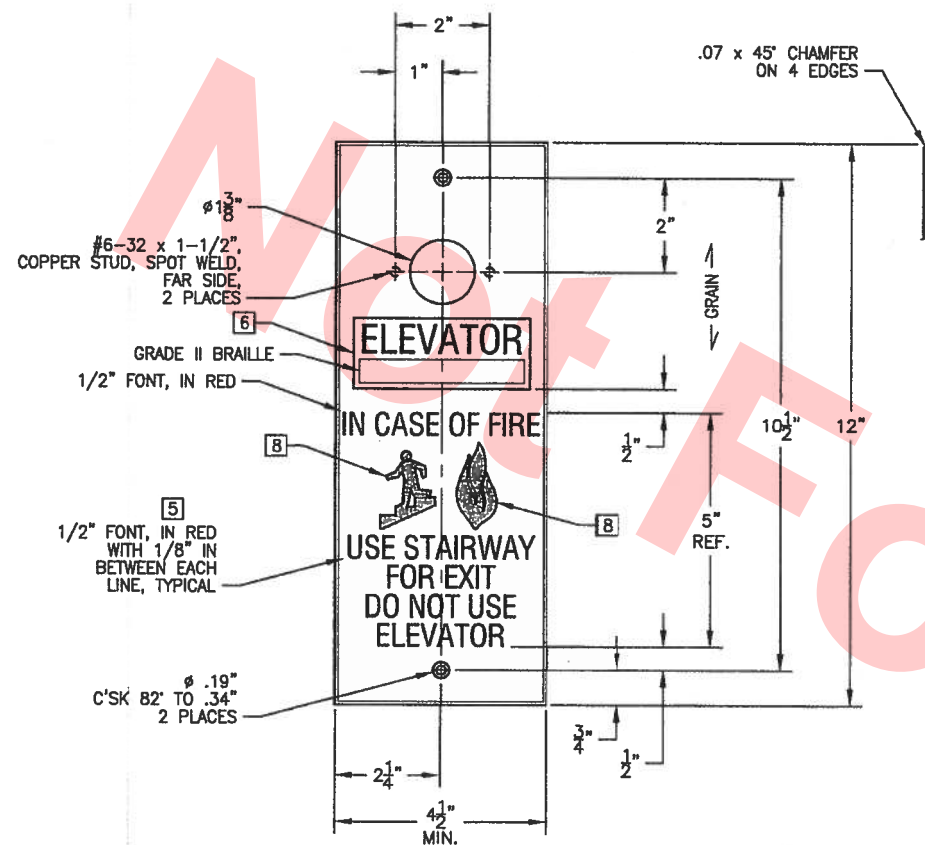


DESIGNED:	DATE:
DRAWN: G. Lee	09/08
CHECKED: J. Lee	09/08
APPROVED: J. Lee	09/08

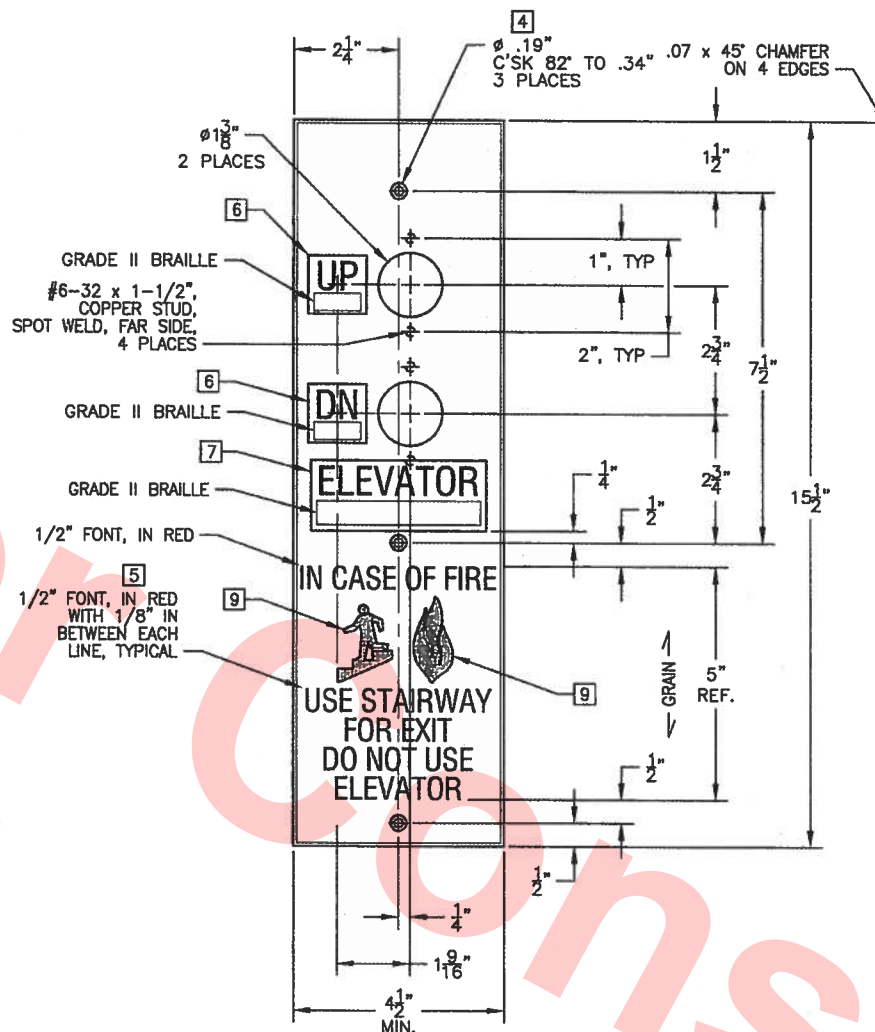
BART FACILITIES STANDARDS ARCHITECTURAL ELEVATOR DETAILS

ENTRANCE

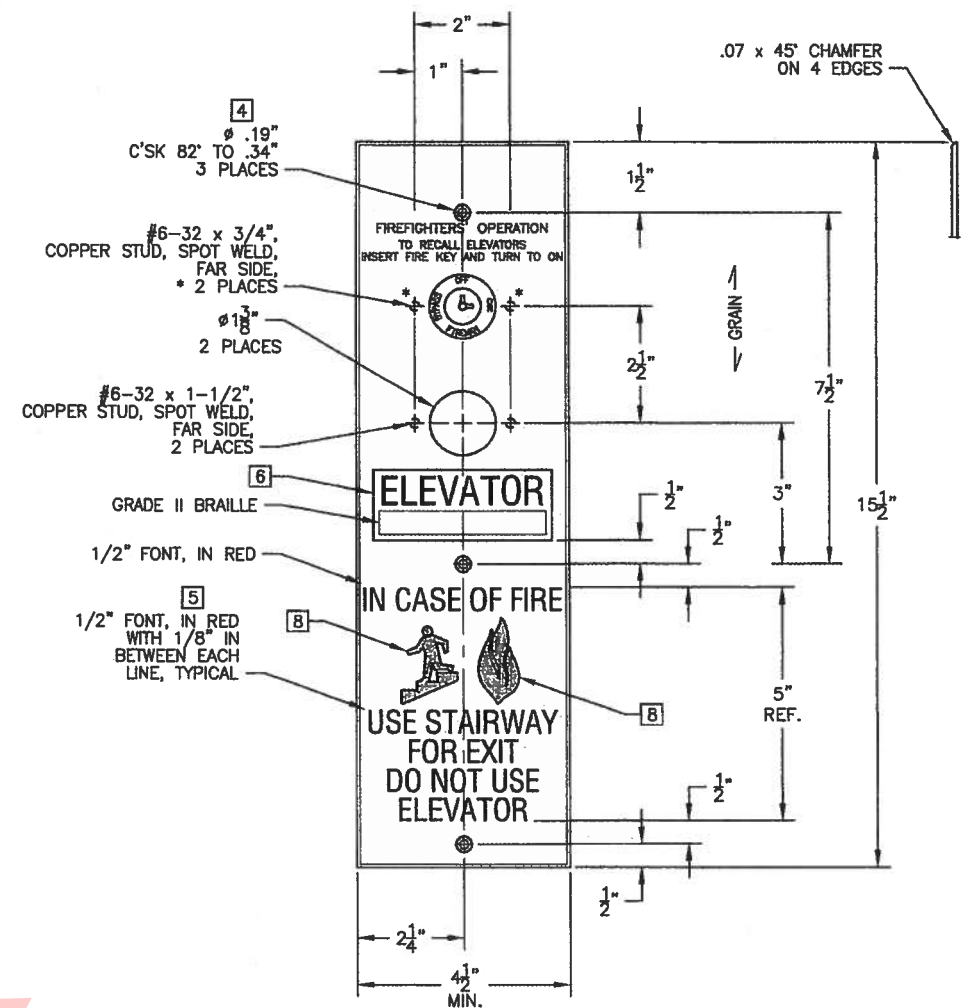
REF. NO.	SIZE: SCALE D
CONTRACT	REV. 00
SHEET NO. AS09	PG. NO. 1094



TOP OR BOTTOM LEVEL



INTERMEDIATE LANDING



BUILDING EXIT LEVEL

NOTES:

1. MATERIAL: 12 GAUGE #4 BRUSHED 304 STAINLESS STEEL.
2. DEBURR AND BREAK SHARP EDGES.
3. PUSH-BUTTON, BRAILLE PLATE, PICTORIAL SYMBOLS AND WORD ENGRAVING SHALL BE ADA COMPLIANT.
4. PROVIDE STAINLESS STEEL, OVAL HEAD, SPANNER DRILLED TAMPER PROOF, #8-32 x 3/4" SCREWS AND TINNEMAN HEAVY DUTY RATED SCREW CLIPS.
5. ENGRAVED TEXT TO REMAIN CLEAR OF ALL HOLES.
6. RECESSED BRAILLE PLATE SHALL BE 1-1/4" SQUARE WITH 5/8" WHITE RAISED CHARACTERS COPY 22 GAUGE THICK, ON POWDER EPOXY BLACK BACKGROUND, 20 MIL FULL BACK 3M VHB ADHESIVE AND FLUSH WITH SURFACE OF FACE PLATE.
7. RECESSED BRAILLE PLATE SHALL BE 1-1/2" x 3-3/4" WITH 5/8" WHITE RAISED CHARACTERS COPY 22 GAUGE THICK, ON POWDER EPOXY BLACK BACKGROUND, 20 MIL FULL BACK 3M VHB ADHESIVE AND FLUSH WITH SURFACE OF FACE PLATE.
8. TWO INNOVATION PB30 BUTTONS ARE NOT INCLUDED.
9. ENGRAVED PICTORIAL SYMBOLS IN RED.

00	09/08	GL	BY	mm	DRAWN PER BECO EM001368
REV.	DATE	BY	CHKD.	APP.	DESCRIPTION

THIS DRAWING IS INTENDED SOLELY FOR BART USE IN ORDER TO DESIGN, CONSTRUCT, ALTER, OR MAINTAIN ITS FACILITIES. BART DOES NOT RECOMMEND OR WARRANT USE OF THE DRAWING FOR ANY OTHER PURPOSE. USE OF THE DRAWING BEYOND THE INTENDED PURPOSE WILL BE AT USER'S OWN RISK.

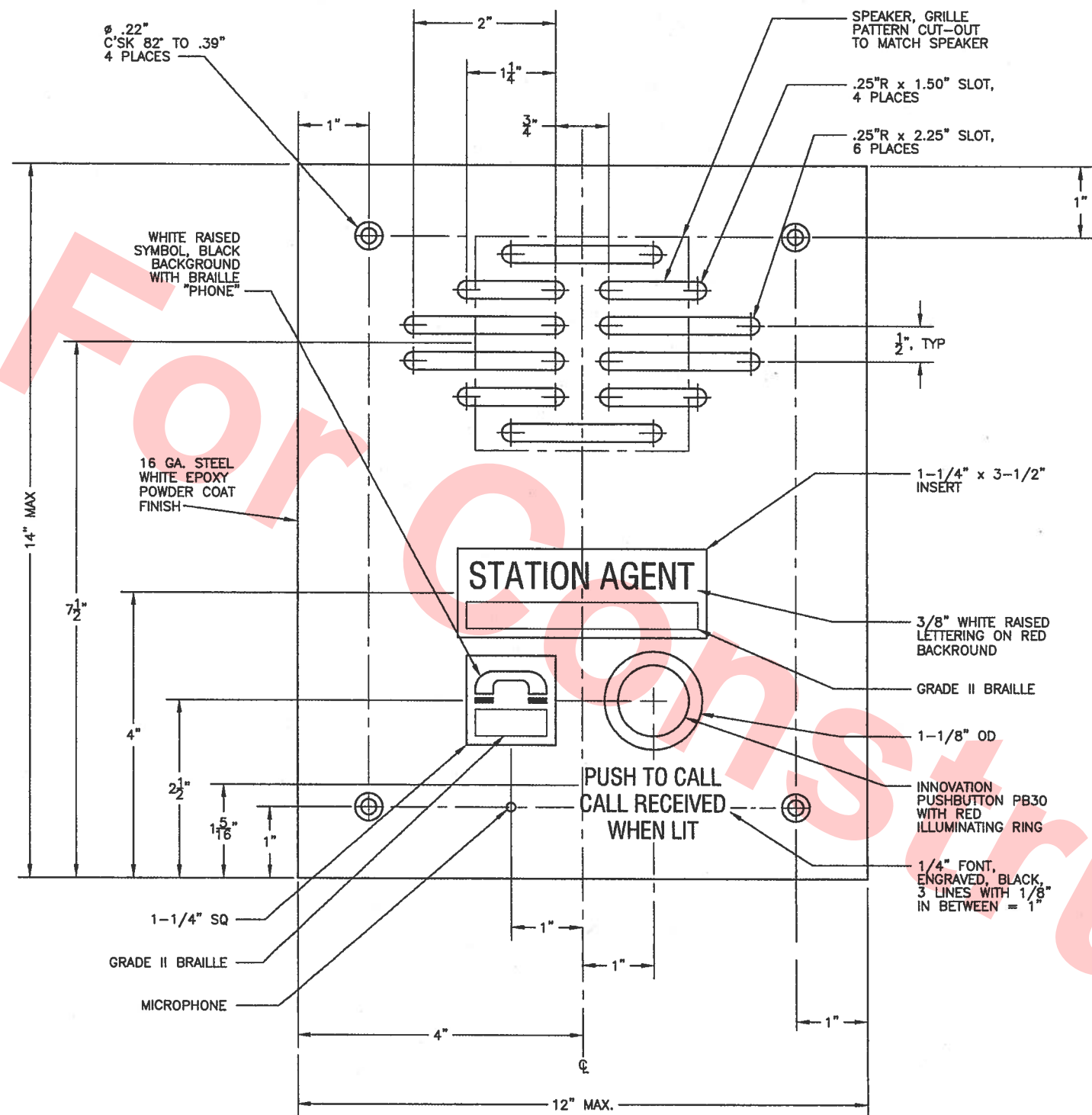


DESIGNED:	DATE:
DRAWN:	09/08
CHECKED:	09/08
APPROVED:	09/08

**BART FACILITIES STANDARDS
ARCHITECTURAL
ELEVATOR DETAILS**

ELEVATOR HALL CALL DETAILS

REF. NO.	SIZE: SCALE
	D
CONTRACT	REV. 00
SHEET NO. AS10	PG. NO. 1095

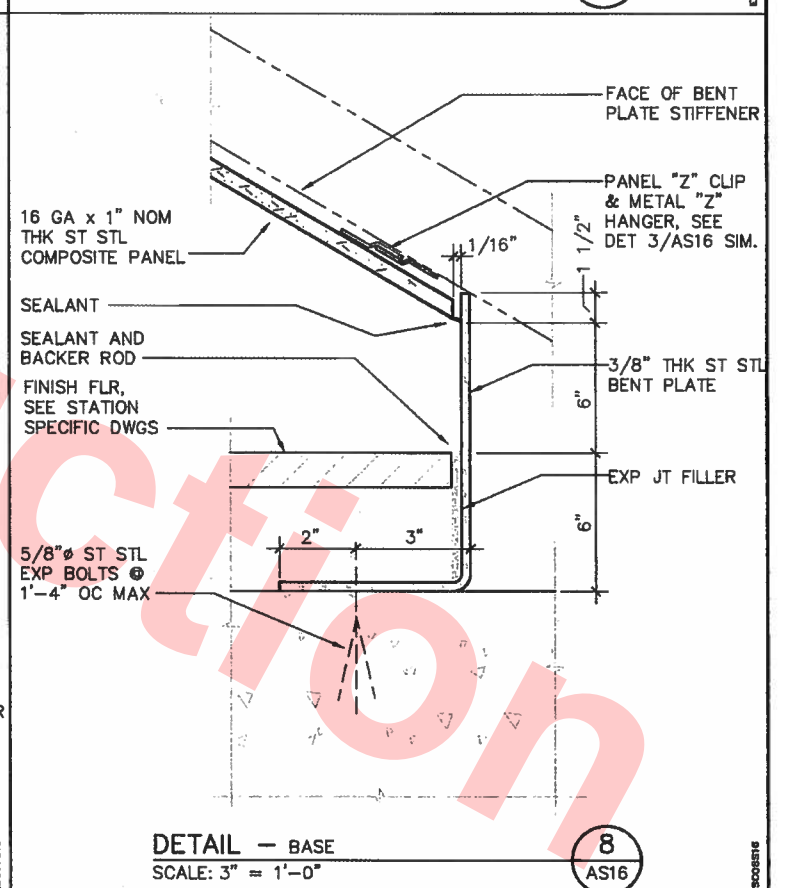
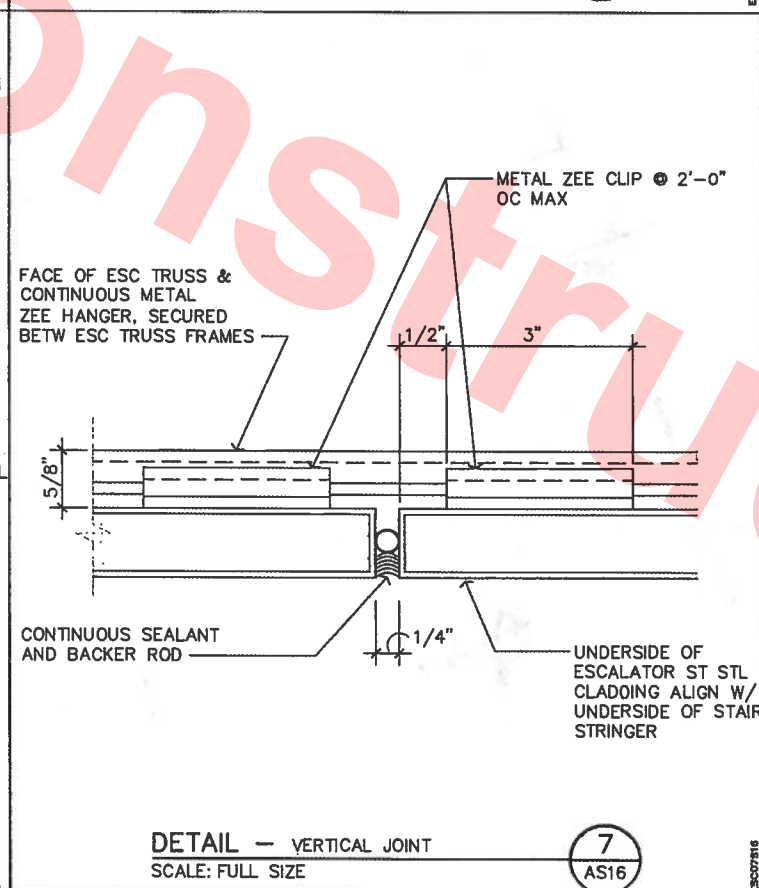
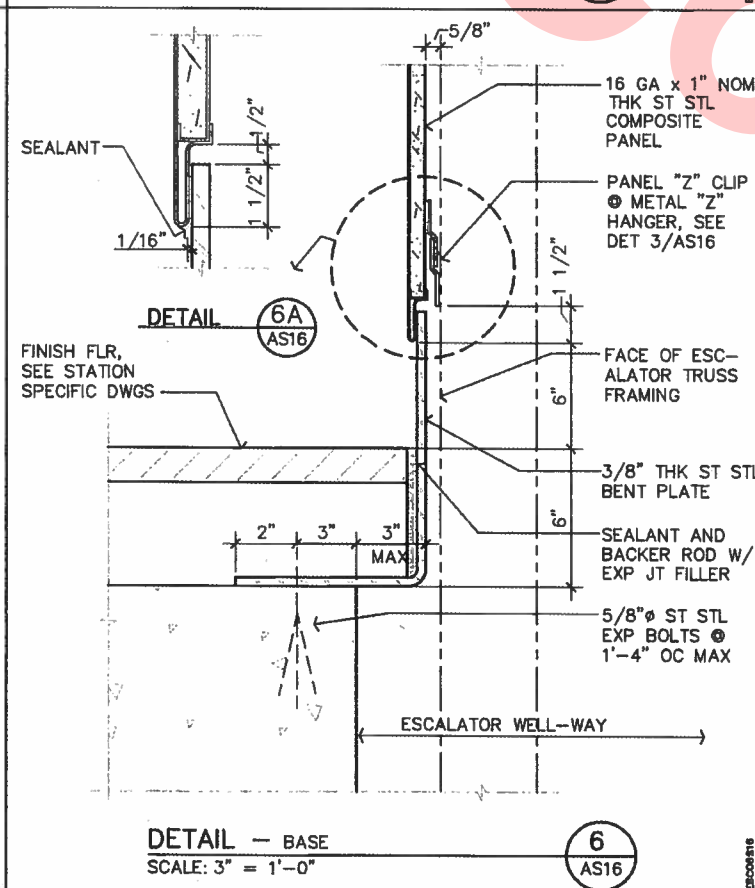
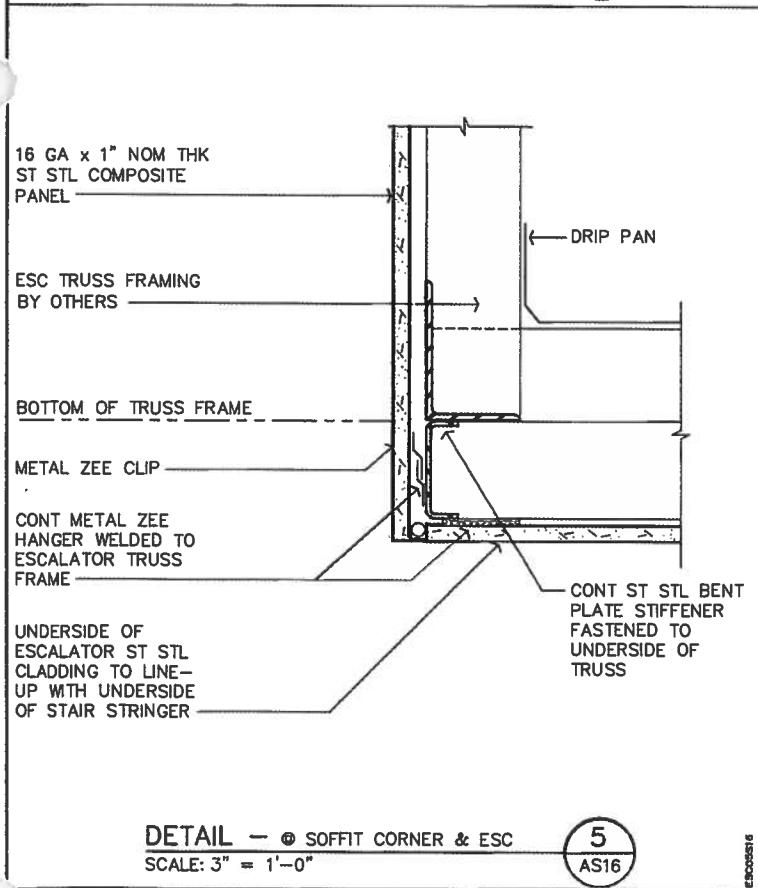
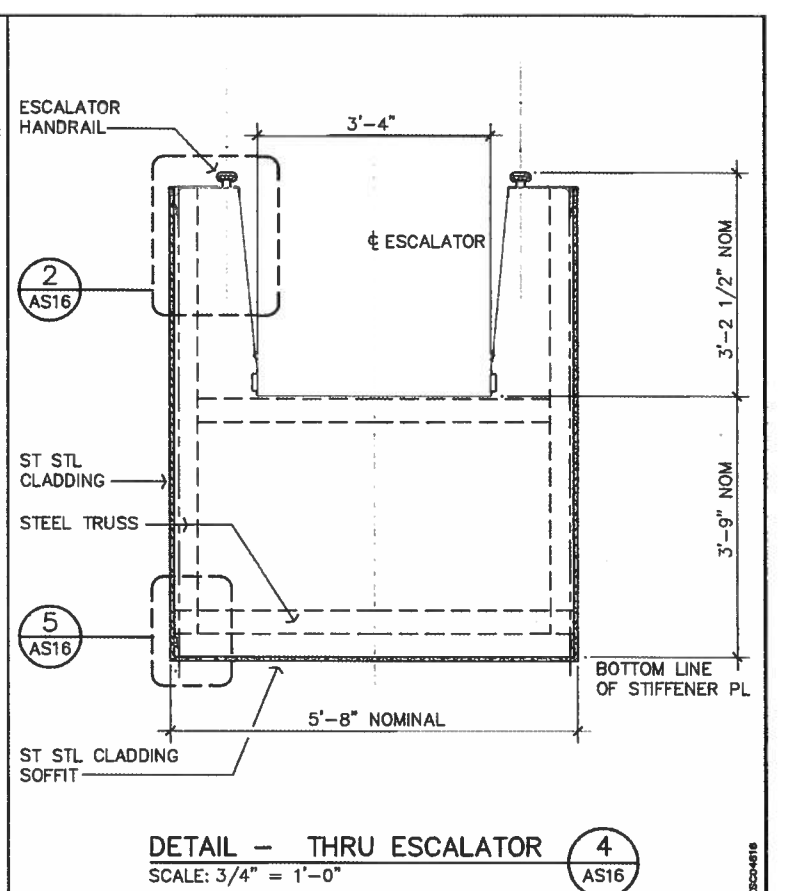
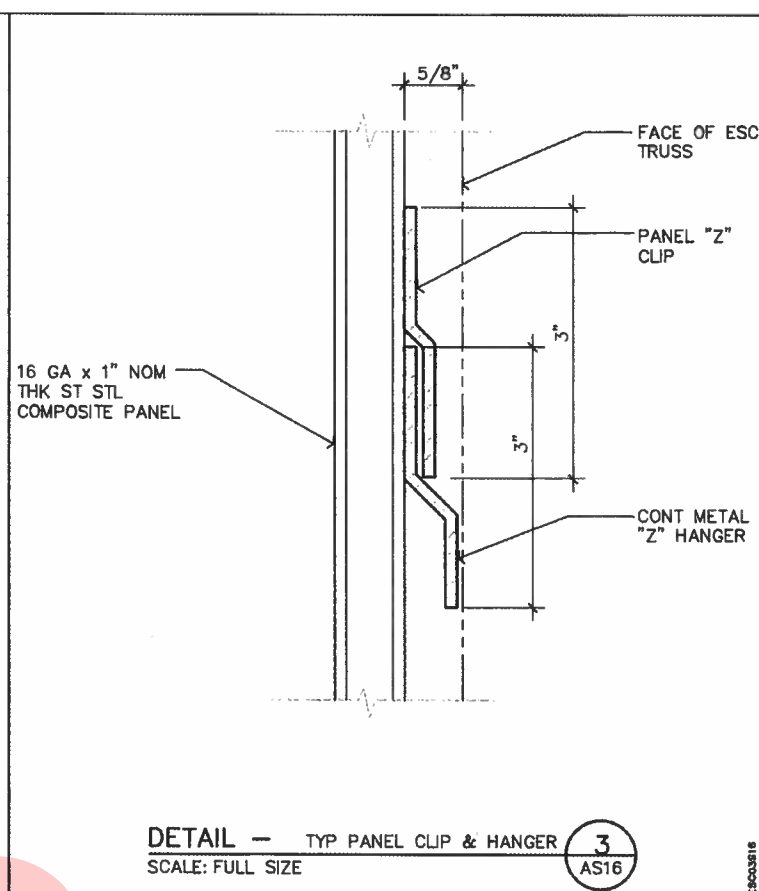
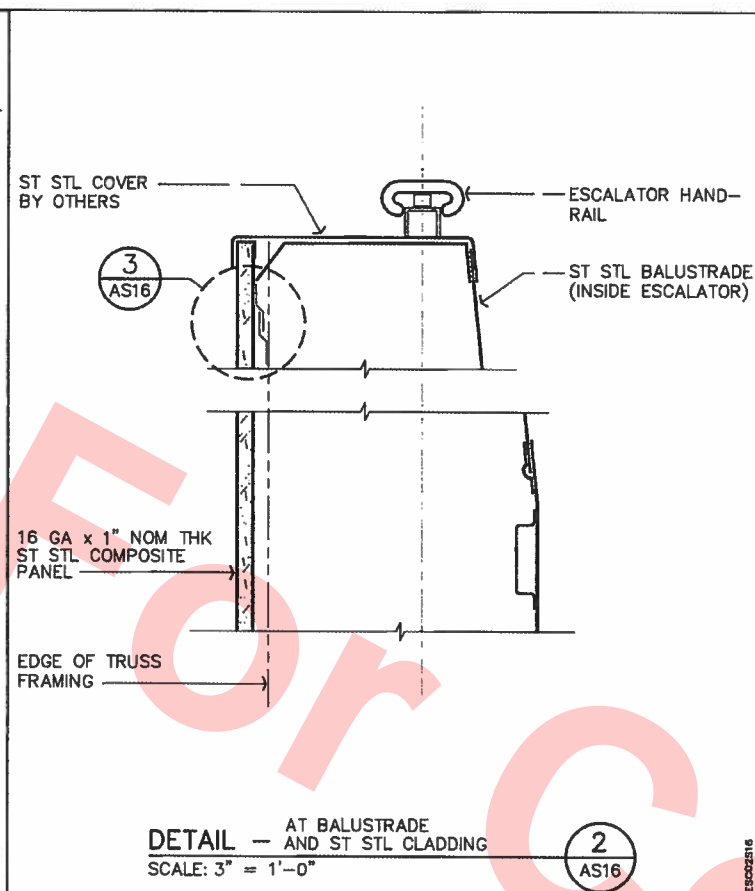
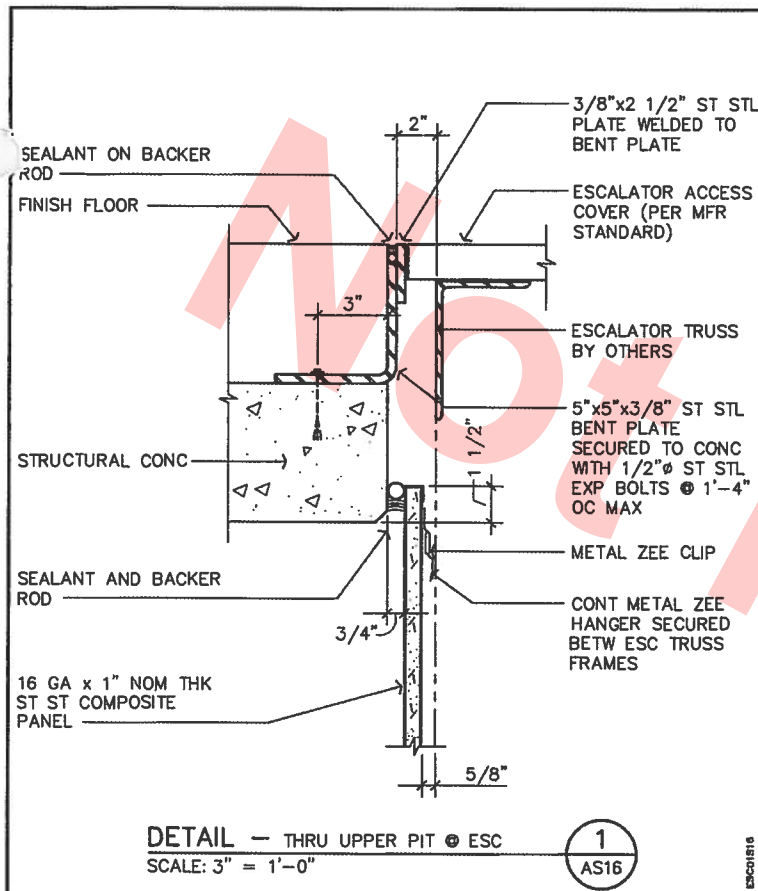


WHITE COURTESY PHONE

NOTE:

1. SLIGHT VARIATION IN COMPONENT LOCATION
TO ALLOW FOR PHYSICAL CLEARANCES ARE ACCEPTABLE.

																																																																																																																																																																																																																																																																																																																																																																																																																																																																																																																																																																																																																																																																																																																																																																																																																																																																																																																																																																																																																																																																																																																																																																																																																																																																																																																																																																																																																					</
--	--	--	--	--	--	--	--	--	--	--	--	--	--	--	--	--	--	--	--	--	--	--	--	--	--	--	--	--	--	--	--	--	--	--	--	--	--	--	--	--	--	--	--	--	--	--	--	--	--	--	--	--	--	--	--	--	--	--	--	--	--	--	--	--	--	--	--	--	--	--	--	--	--	--	--	--	--	--	--	--	--	--	--	--	--	--	--	--	--	--	--	--	--	--	--	--	--	--	--	--	--	--	--	--	--	--	--	--	--	--	--	--	--	--	--	--	--	--	--	--	--	--	--	--	--	--	--	--	--	--	--	--	--	--	--	--	--	--	--	--	--	--	--	--	--	--	--	--	--	--	--	--	--	--	--	--	--	--	--	--	--	--	--	--	--	--	--	--	--	--	--	--	--	--	--	--	--	--	--	--	--	--	--	--	--	--	--	--	--	--	--	--	--	--	--	--	--	--	--	--	--	--	--	--	--	--	--	--	--	--	--	--	--	--	--	--	--	--	--	--	--	--	--	--	--	--	--	--	--	--	--	--	--	--	--	--	--	--	--	--	--	--	--	--	--	--	--	--	--	--	--	--	--	--	--	--	--	--	--	--	--	--	--	--	--	--	--	--	--	--	--	--	--	--	--	--	--	--	--	--	--	--	--	--	--	--	--	--	--	--	--	--	--	--	--	--	--	--	--	--	--	--	--	--	--	--	--	--	--	--	--	--	--	--	--	--	--	--	--	--	--	--	--	--	--	--	--	--	--	--	--	--	--	--	--	--	--	--	--	--	--	--	--	--	--	--	--	--	--	--	--	--	--	--	--	--	--	--	--	--	--	--	--	--	--	--	--	--	--	--	--	--	--	--	--	--	--	--	--	--	--	--	--	--	--	--	--	--	--	--	--	--	--	--	--	--	--	--	--	--	--	--	--	--	--	--	--	--	--	--	--	--	--	--	--	--	--	--	--	--	--	--	--	--	--	--	--	--	--	--	--	--	--	--	--	--	--	--	--	--	--	--	--	--	--	--	--	--	--	--	--	--	--	--	--	--	--	--	--	--	--	--	--	--	--	--	--	--	--	--	--	--	--	--	--	--	--	--	--	--	--	--	--	--	--	--	--	--	--	--	--	--	--	--	--	--	--	--	--	--	--	--	--	--	--	--	--	--	--	--	--	--	--	--	--	--	--	--	--	--	--	--	--	--	--	--	--	--	--	--	--	--	--	--	--	--	--	--	--	--	--	--	--	--	--	--	--	--	--	--	--	--	--	--	--	--	--	--	--	--	--	--	--	--	--	--	--	--	--	--	--	--	--	--	--	--	--	--	--	--	--	--	--	--	--	--	--	--	--	--	--	--	--	--	--	--	--	--	--	--	--	--	--	--	--	--	--	--	--	--	--	--	--	--	--	--	--	--	--	--	--	--	--	--	--	--	--	--	--	--	--	--	--	--	--	--	--	--	--	--	--	--	--	--	--	--	--	--	--	--	--	--	--	--	--	--	--	--	--	--	--	--	--	--	--	--	--	--	--	--	--	--	--	--	--	--	--	--	--	--	--	--	--	--	--	--	--	--	--	--	--	--	--	--	--	--	--	--	--	--	--	--	--	--	--	--	--	--	--	--	--	--	--	--	--	--	--	--	--	--	--	--	--	--	--	--	--	--	--	--	--	--	--	--	--	--	--	--	--	--	--	--	--	--	--	--	--	--	--	--	--	--	--	--	--	--	--	--	--	--	--	--	--	--	--	--	--	--	--	--	--	--	--	--	--	--	--	--	--	--	--	--	--	--	--	--	--	--	--	--	--	--	--	--	--	--	--	--	--	--	--	--	--	--	--	--	--	--	--	--	--	--	--	--	--	--	--	--	--	--	--	--	--	--	--	--	--	--	--	--	--	--	--	--	--	--	--	--	--	--	--	--	--	--	--	--	--	--	--	--	--	--	--	--	--	--	--	--	--	--	--	--	--	--	--	--	--	--	--	--	--	--	--	--	--	--	--	--	--	--	--	--	--	--	--	--	--	--	--	--	--	--	--	--	--	--	--	--	--	--	--	--	--	--	--	--	--	--	--	--	--	--	--	--	--	--	--	--	--	--	--	--	--	--	--	--	--	--	--	--	--	--	--	--	--	--	--	--	--	--	--	--	--	--	--	--	--	--	--	--	--	--	--	--	--	--	--	--	--	--	--	--	--	--	--	--	--	--	--	--	--	--	--	--	--	--	--	--	--	--	--	--	--	--	--	--	--	--	--	--	--	--	--	--	--	--	--	--	--	--	--	--	--	--	--	--	--	--	--	--	--	--	--	--	--	--	--	--	--	--	--	--	--	--	--	--	--	--	--	--	--	--	--	--	--	--	--	--	--	--	--	--	--	--	--	--	--	--	--	--	--	--	--	--	--	--	--	--	--	--	--	--	--	--	--	--	--	--	--	--	--	--	--	--	--	--	--	--	--	--	--	--	--	--	--	--	--	--	--	--	--	--	--	--	--	--	--	--	--	--	--	--	--	--	--	--	--	--	--	--	--	--	--	--	--	--	--	--	--	--	--	--	--	--	--	--	--	--	--	--	--	--	--	--	--	--	--	--	--	--	--	--	--	--	--	--	--	--	--	--	--	--	--	--	--	--	--	--	--	--	--	--	--	--	--	--	--	--	--	--	--	--	--	--	--	--	--	--	--	--	--	--	--	--	--	--	--	--	--	--	--	--	--	--	--	--	--	--	--	--	--	--	--	--	--	--	--	--	--	--	--	--	--	--	--	--	--	--	--	--	--	--	--	--	--	--	--	--	--	--	--	--	--	--	--	--	--	--	--	--	--	--	--	--	--	--	--	--	--	--	--	--	--	--	--	--	--	--	--	--	--	--	--	--	--	--	--	--	--	--	--	--	--	--	--	--	--	--	--	--	--	--	--	--	--	--	--	--	--	--	--	--	--	--	--	--	--	--	--	--	--	--	--	--	--	--	--	--	--	--	--	--	--	--	--	--	--	--	--	--	--	--	--	--	--	--	--	--	--	--	--	--	--	--	--	--	--	--	--	--	--	--	--	--	--	--	--	--	--	--	--	--	--	--	--	--	--	--	--	--	--	--	--	--	----



00	08/04				DRAWN PER BECO EM001151
REV.	DATE	BY	CHD.	APP.	DESCRIPTION

THIS DRAWING IS INTENDED SOLELY FOR BART USE IN ORDER TO DESIGN, CONSTRUCT, ALTER, OR MAINTAIN ITS FACILITIES. BART DOES NOT RECOMMEND OR WARRANT USE OF THE DRAWING FOR ANY OTHER PURPOSE. USE OF THE DRAWING BEYOND THE INTENDED PURPOSE WILL BE AT USER'S OWN RISK.



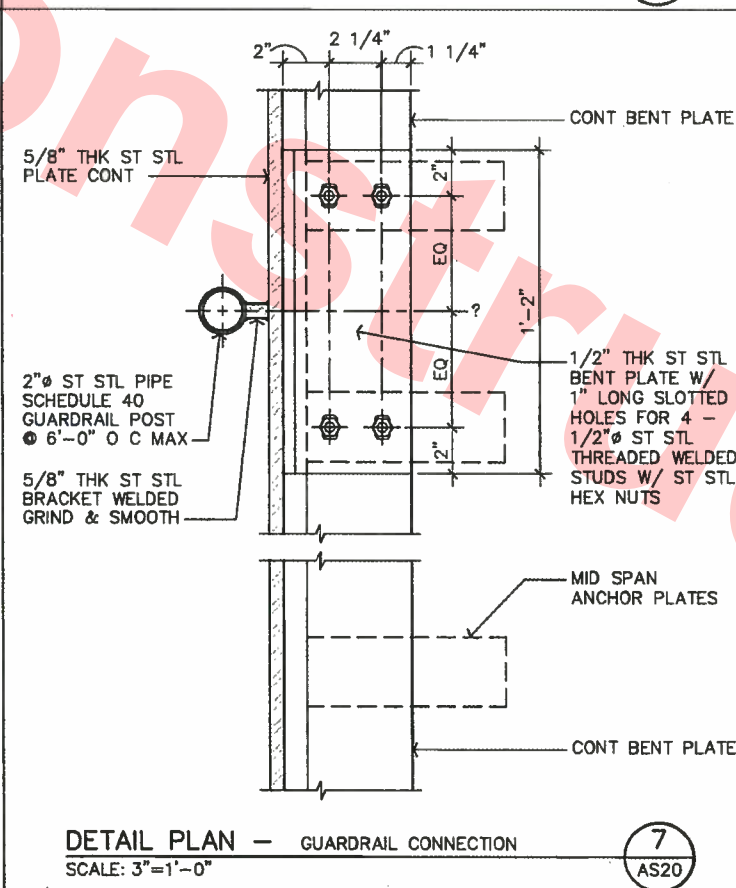
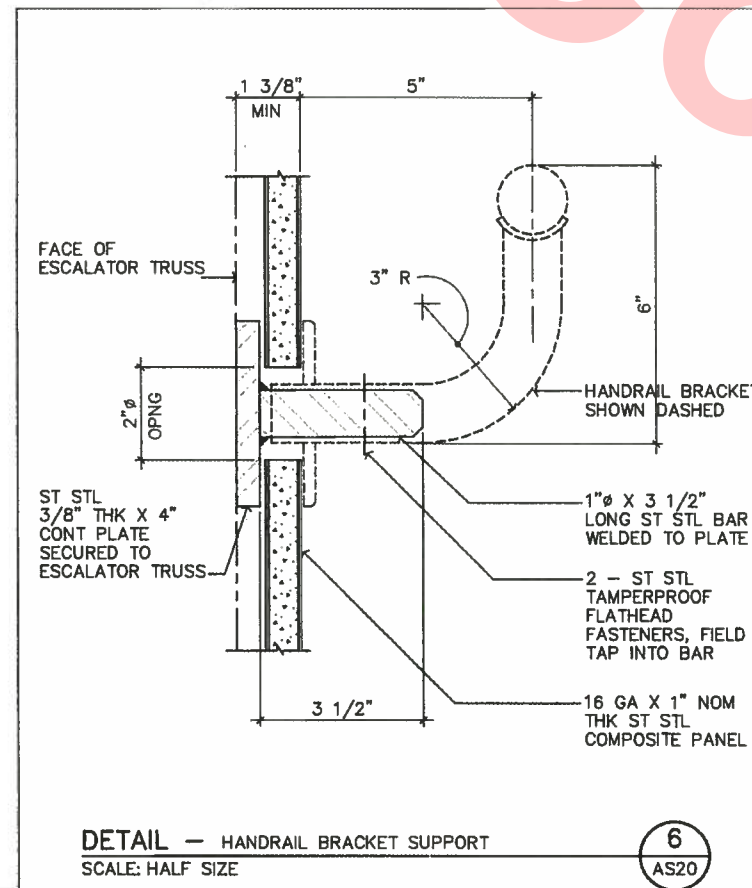
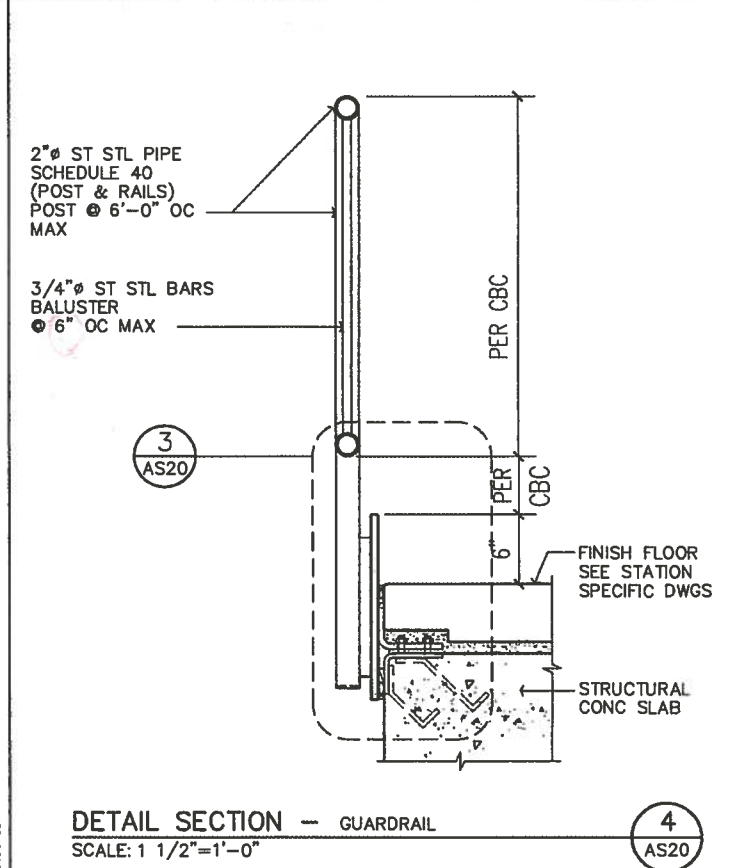
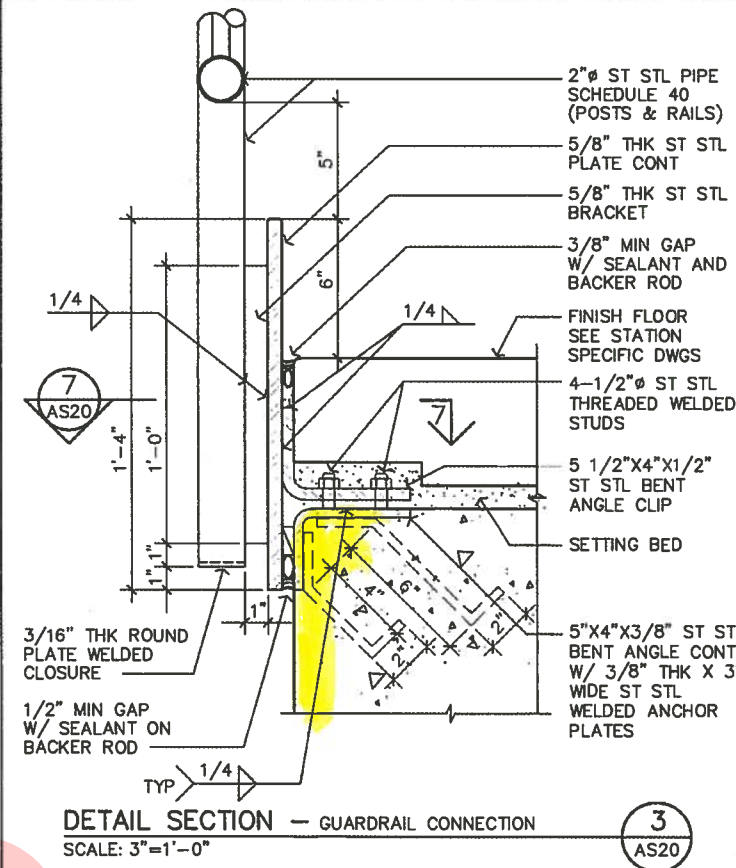
DESIGNED:	BATC	DATE:	12/91
DRAWN:			
CHECKED:			
APPROVED:			

BART FACILITIES STANDARDS ARCHITECTURAL

ESCALATOR CLADDING DETAILS

REF. NO.	AS16
SIZE: SCALE	D NOTED
CONTRACT	REV. 00
SHEET NO.	PG. NO.
AS16	1097

Not For Construction



00	08/04				DRAWN PER BECO EM001151
REV.	DATE	BY	CHKD.	APP.	DESCRIPTION

THIS DRAWING IS INTENDED SOLELY FOR BART USE IN ORDER TO DESIGN, CONSTRUCT, ALTER, OR MAINTAIN ITS FACILITIES. BART DOES NOT RECOMMEND OR WARRANT USE OF THE DRAWING FOR ANY OTHER PURPOSE. USE OF THE DRAWING BEYOND THE INTENDED PURPOSE WILL BE AT USER'S OWN RISK.

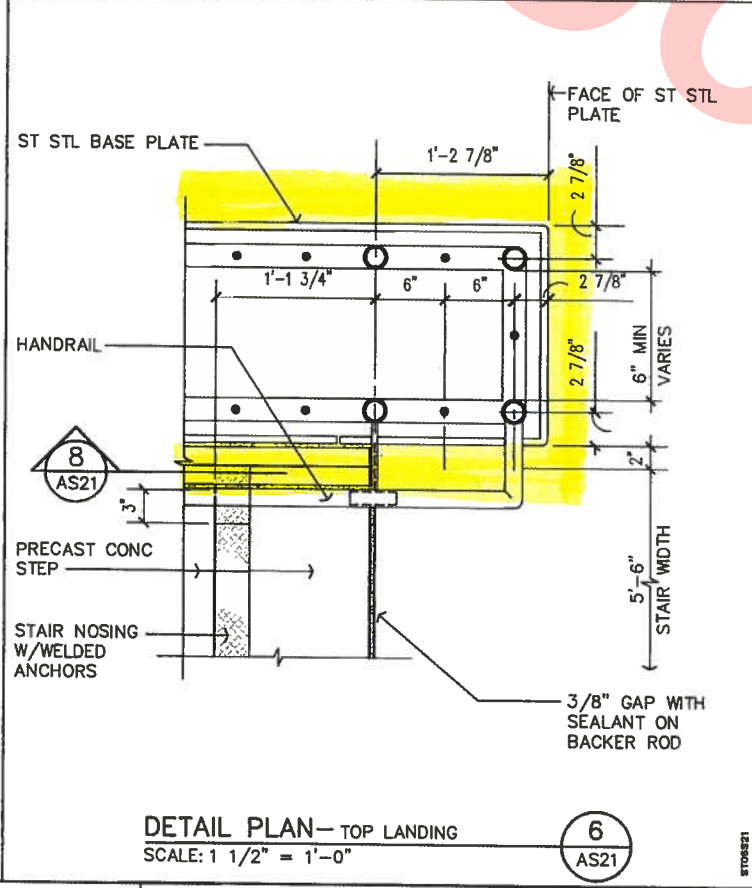
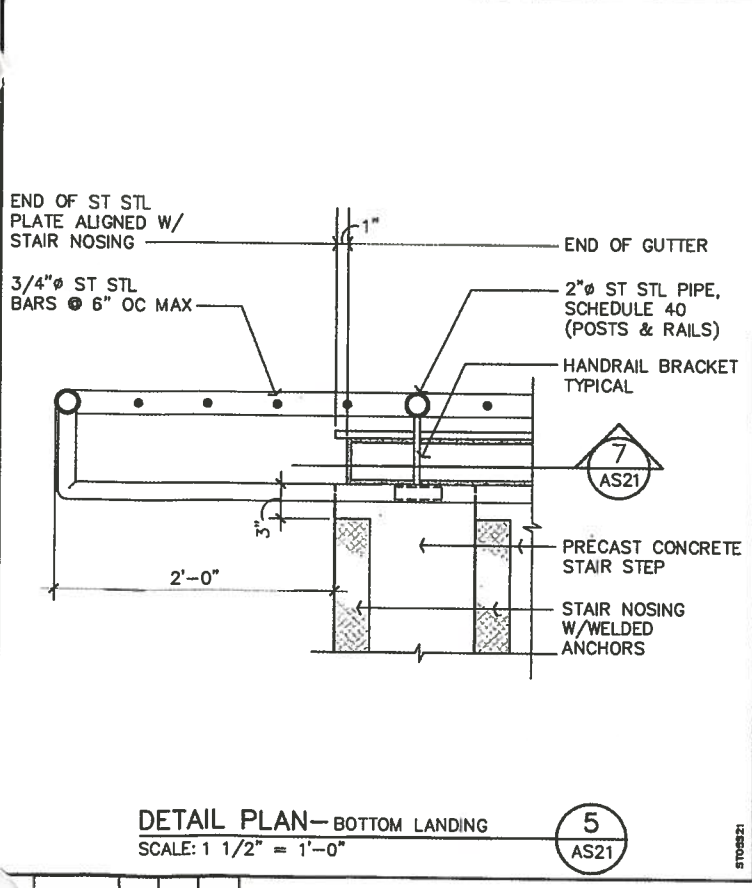
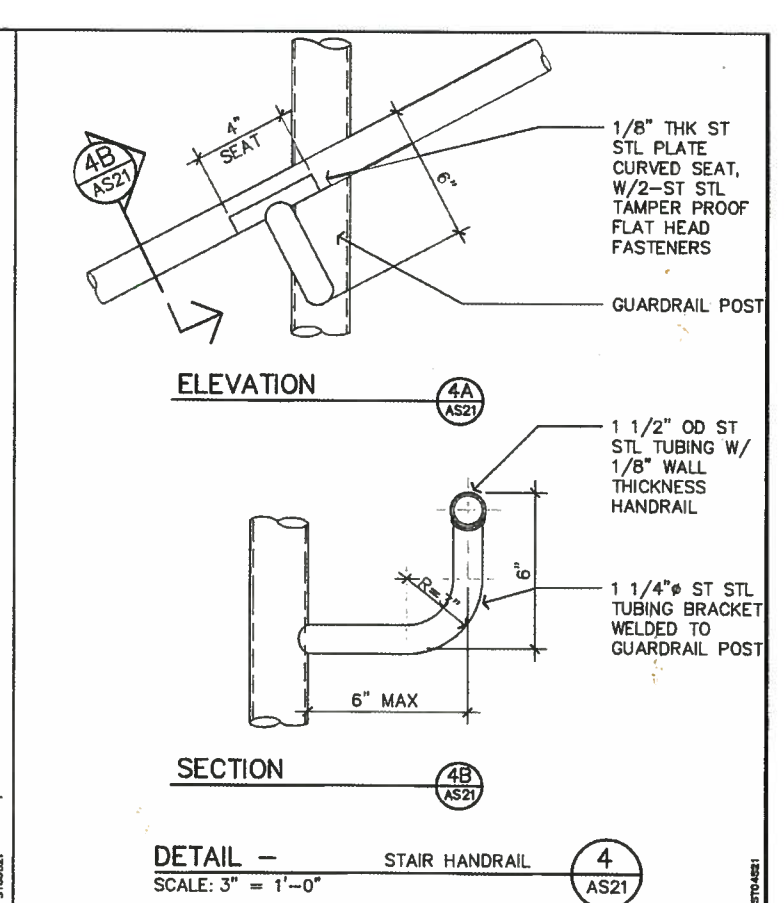
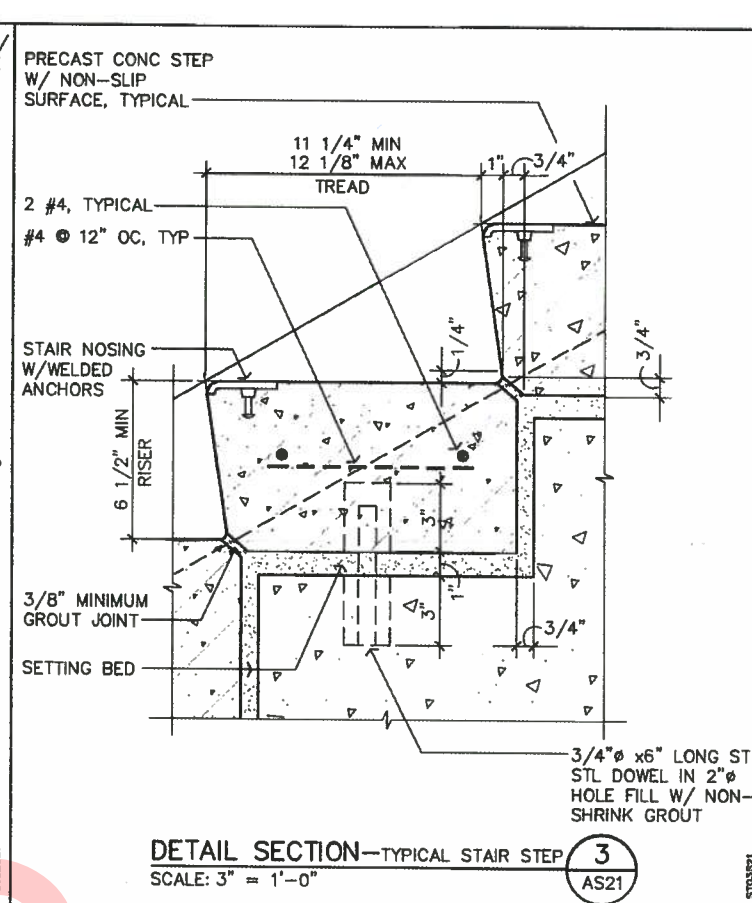
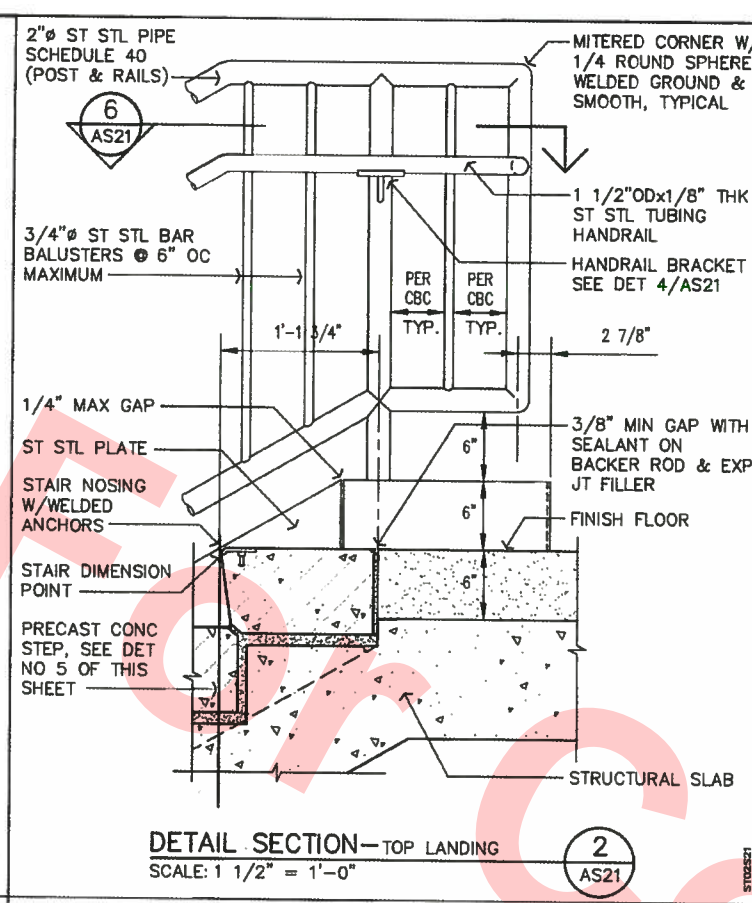
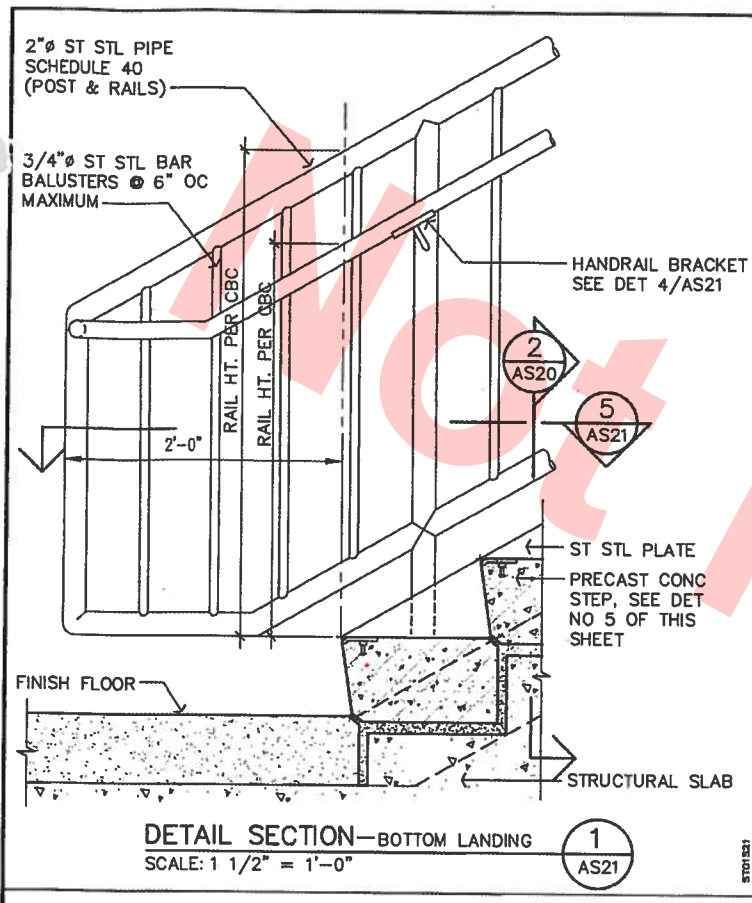


DESIGNED:	BATC	DATE:	12/91
DRAWN:			
CHECKED:			
APPROVED:			

**BART FACILITIES STANDARDS
ARCHITECTURAL**

STAIR/HANDRAIL/GUARDRAIL DETAILS

REF. NO.	AS20
SIZE/SCALE	D NOTED
CONTRACT	REV. 00
SHEET NO.	PG. NO.
AS20	1098



00	08/04				DRAWN PER BECO EM001151
REV.	DATE	BY	CHKD.	APP.	DESCRIPTION

THIS DRAWING IS INTENDED SOLELY FOR BART USE IN ORDER TO DESIGN, CONSTRUCT, ALTER, OR MAINTAIN ITS FACILITIES. BART DOES NOT RECOMMEND OR WARRANT USE OF THE DRAWING FOR ANY OTHER PURPOSE. USE OF THE DRAWING BEYOND THE INTENDED PURPOSE WILL BE AT USER'S OWN RISK.

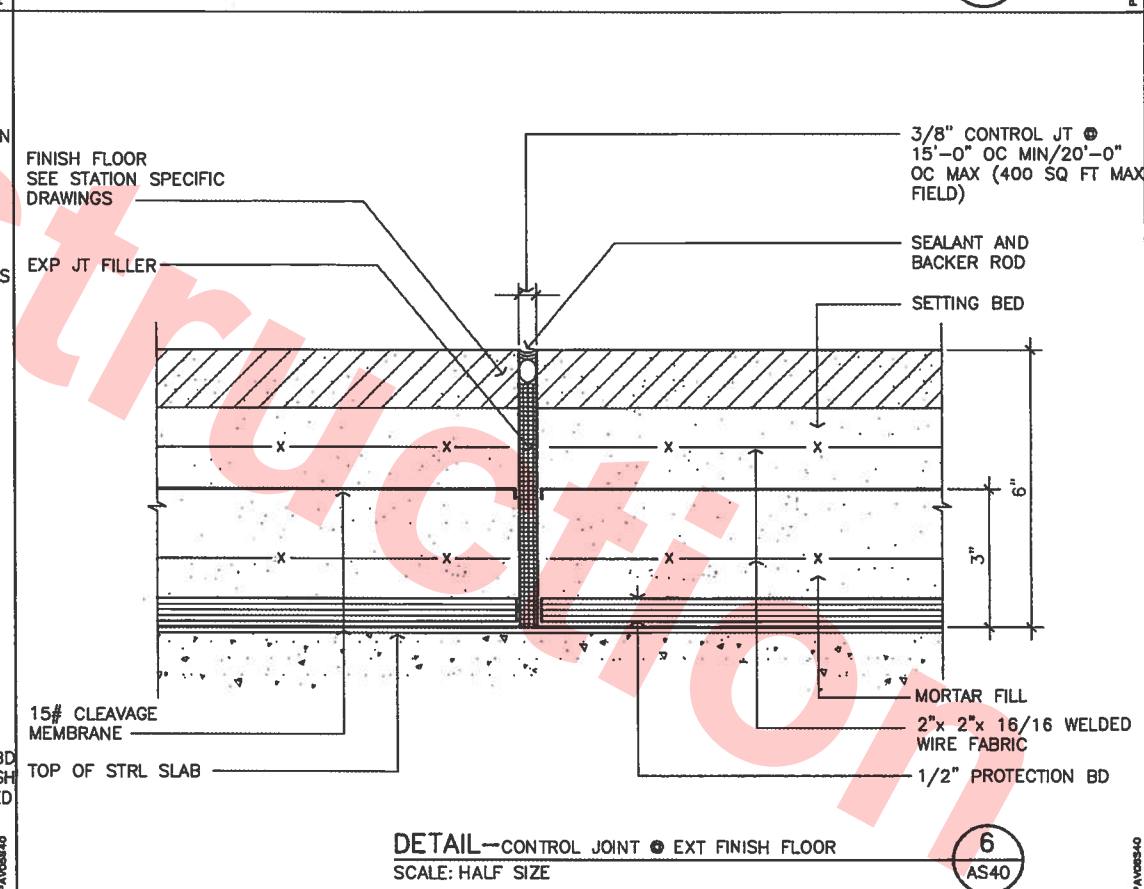
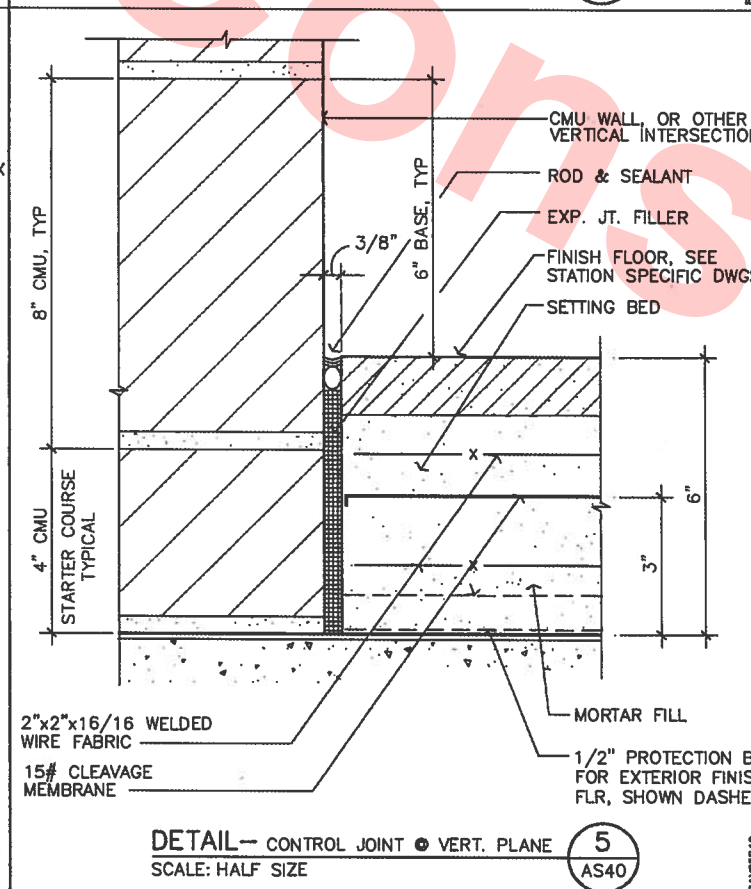
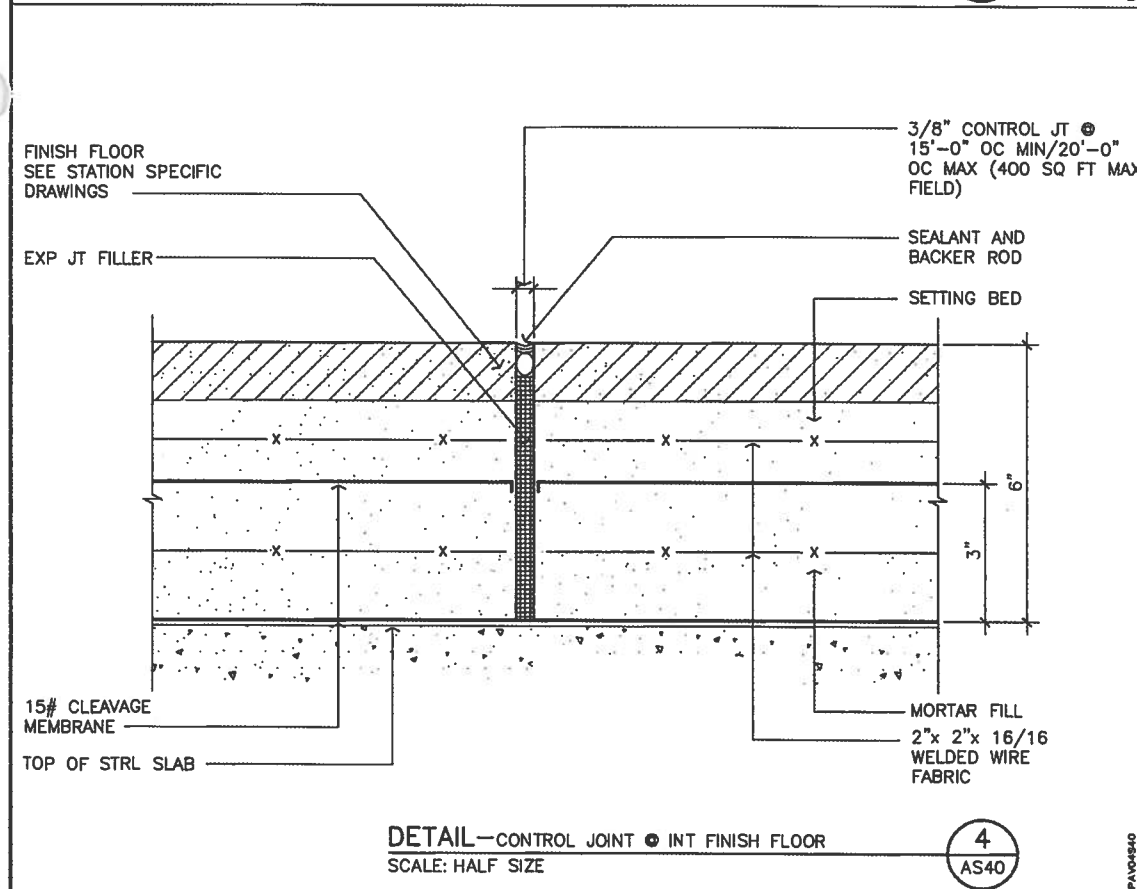
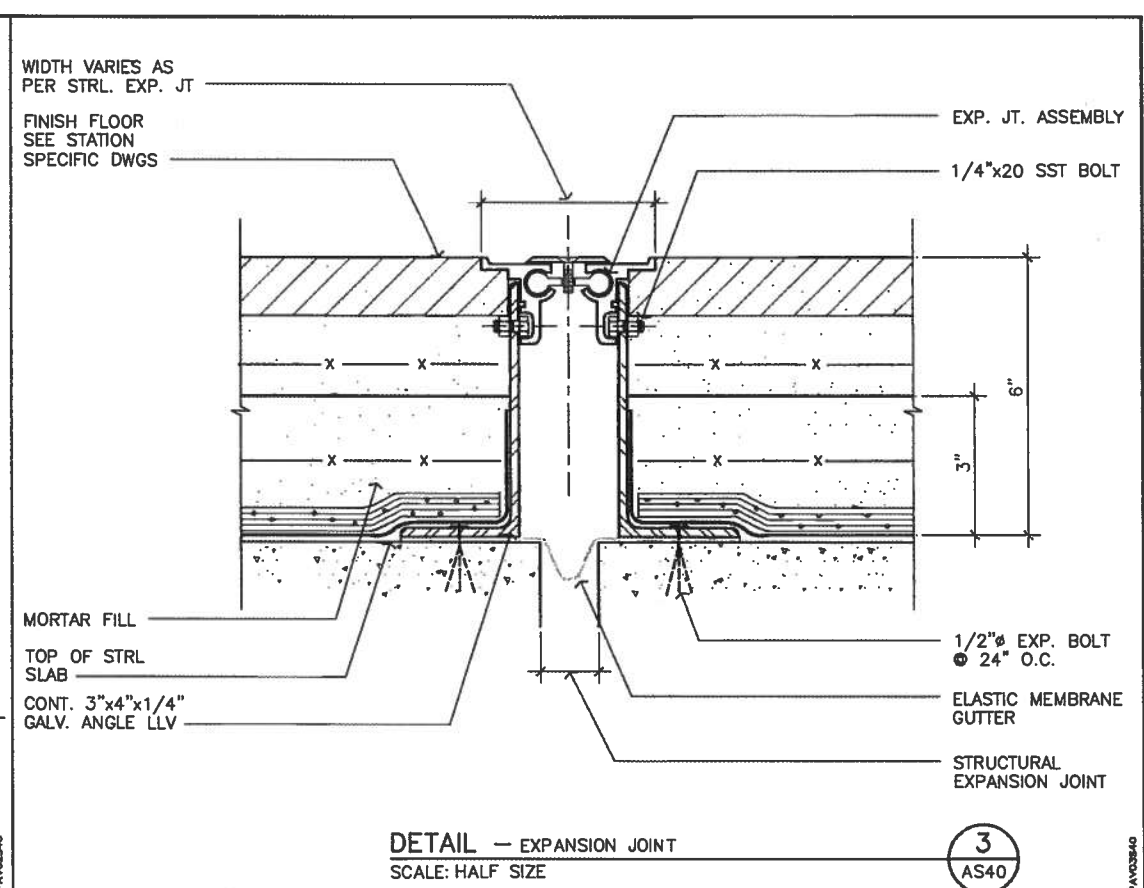
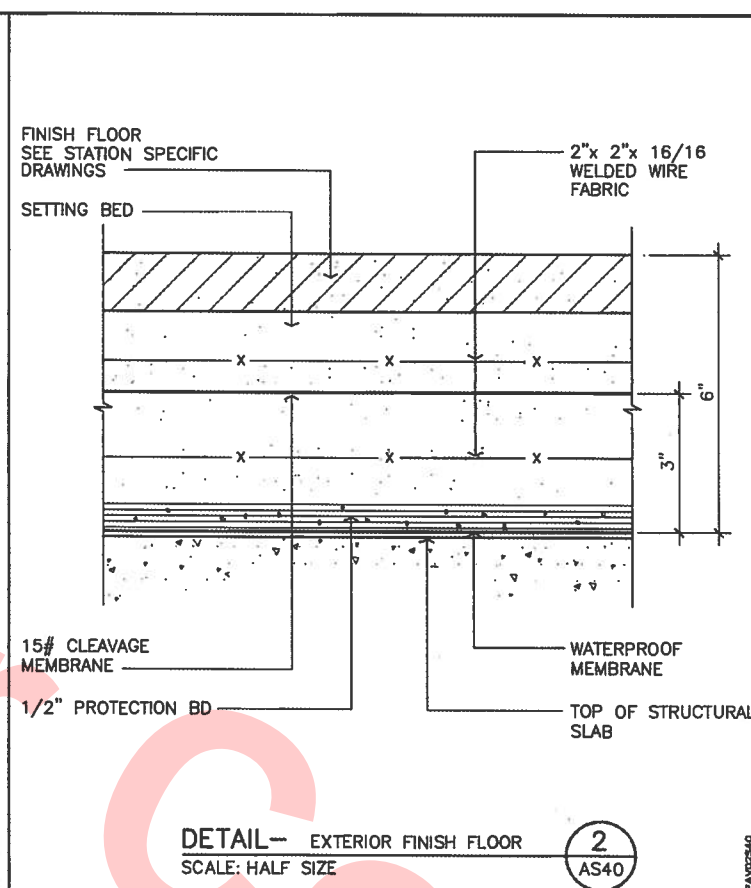
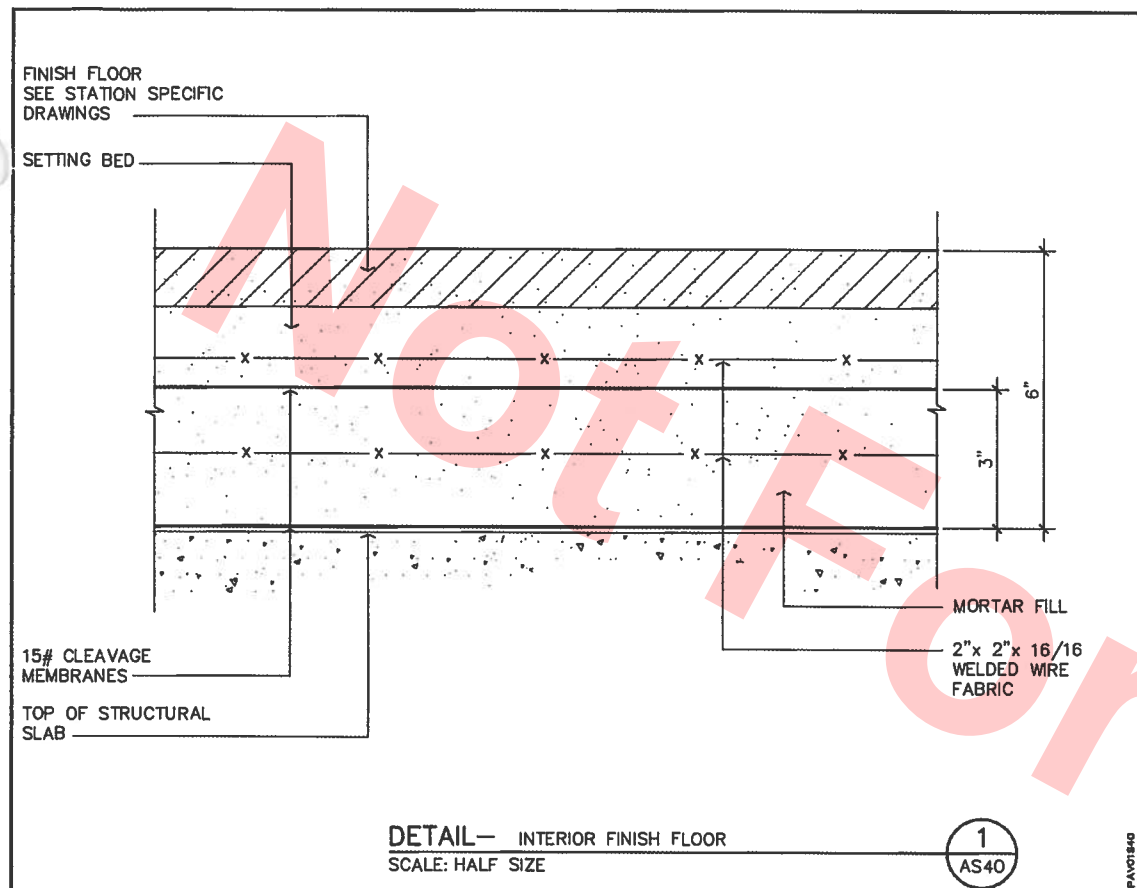


DESIGNED: BATC	DATE: 12/91
DRAWN:	
CHECKED:	
APPROVED:	

**BART FACILITIES STANDARDS
ARCHITECTURAL**

STAIR/HANDRAIL/GUARDRAIL DETAILS

REF. NO. AS21	REV. NO. 00
SIZE: SCALE D NOTED	
SHEET NO. AS21	PG. NO. 1099



00	08/04				DRAWN PER BECO EMO01151
REV.	DATE	BY	CHKD.	APP.	DESCRIPTION

THIS DRAWING IS INTENDED SOLELY FOR BART USE IN ORDER TO DESIGN, CONSTRUCT, ALTER, OR MAINTAIN ITS FACILITIES. BART DOES NOT RECOMMEND OR WARRANT USE OF THE DRAWING FOR ANY OTHER PURPOSE. USE OF THE DRAWING BEYOND THE INTENDED PURPOSE WILL BE AT USER'S OWN RISK.



DESIGNED: BATC	DATE: 12/91
DRAWN:	
CHECKED:	
APPROVED:	

**BART FACILITIES STANDARDS
ARCHITECTURAL**

FLOOR PAVING DETAILS

REF. NO. AS40	REV. 00
SIZE: SCALE D NOTED	PG. NO. 1100
SHEET NO. AS40	

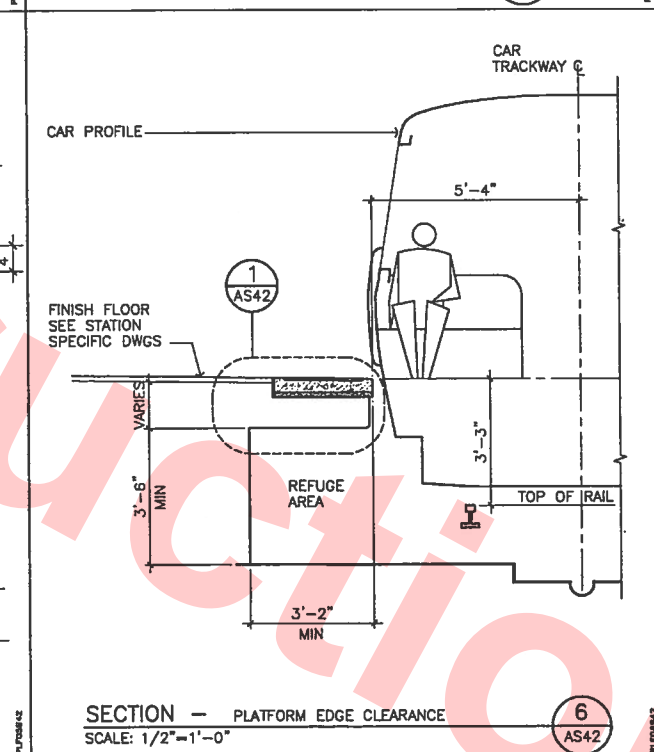
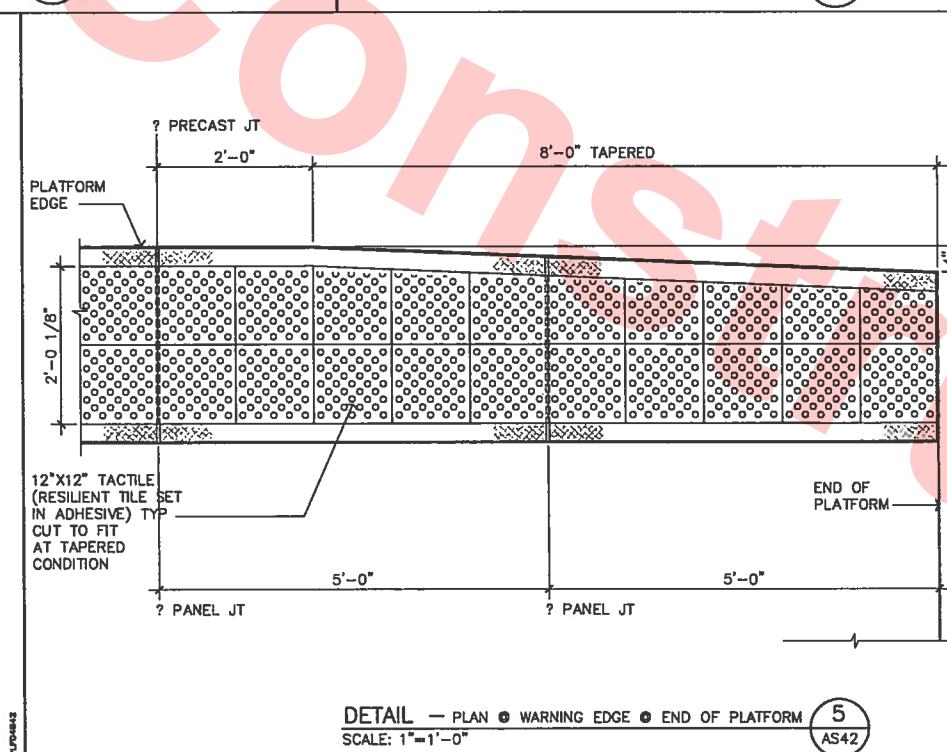
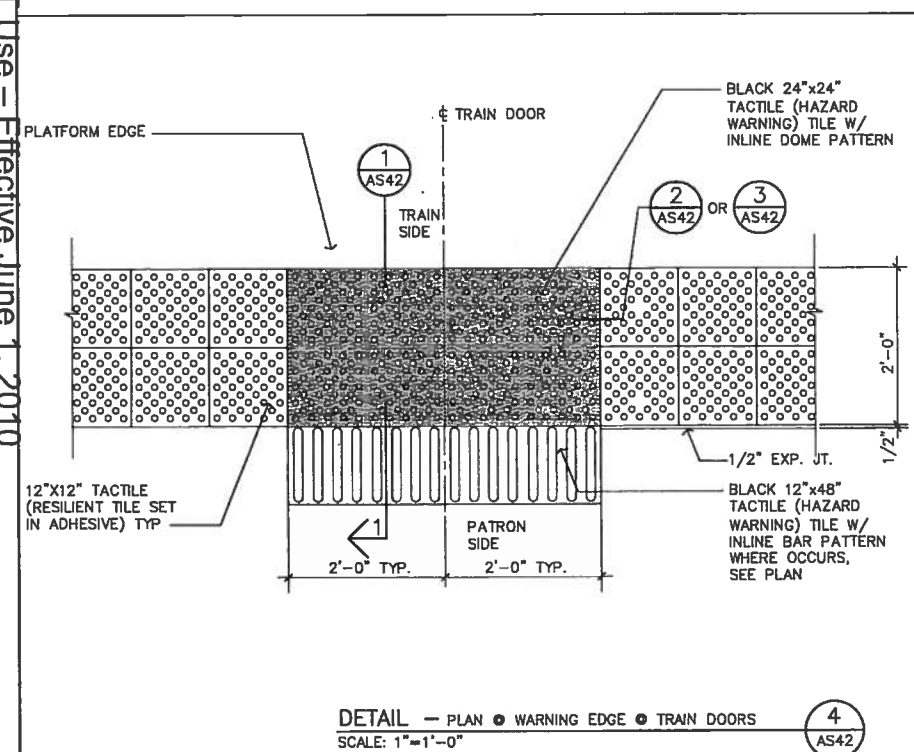
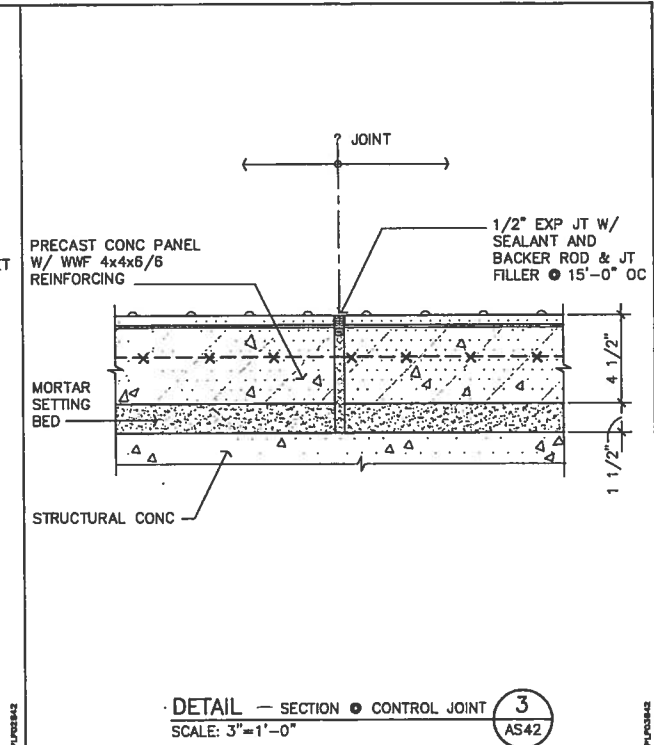
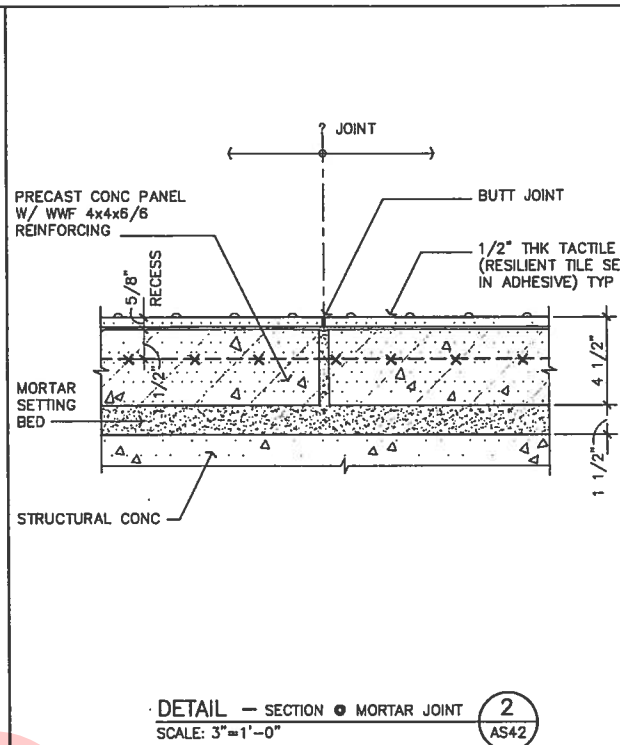
DETAIL - SECTION AT PLATFORM EDGE

SCALE: 3" = 1'-0"

AS42

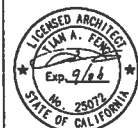
Annotations:

- 1/2" EXP JT W/ SEALANT AND BACKER ROD & JOINT FILLER
- TURN WATERPROOF MEMBRANE VERTICAL AT JOINT - PROVIDE DRAINAGE FROM ABOVE MEMBRANE TO TRACKBED
- FINISH FLOOR
- ADDITIONAL WARNING TILE (SHOWN DASHED) WHERE REQUIRED, SEE PLAN
- WATERPROOFING MEMBRANE & PROTECTION BD-SEE AS40
- CON'T. 2" DEEP x 6" WIDE KEY @ CENTER OF STR. CONC
- TACTILE HAZARD WARNING TILE
- PRECAST POLYMER CONC.
- 1" MIN. N.S. LEVELING GROUT
- VARIABLES
- 3/4" CHAMFER
- 1/2" R, QUARTER ROUND DRIP
- CEMENTITIOUS SOUND ABSORBENT MATERIAL ON METAL LATH WHERE INDICATED
- CLEAN THE TOP OF STR. SLAB THOROUGHLY AND PROVIDE EPOXY ADHESIVE CONT. AS SHOWN.
- 1 1/2" RECESS FOR CEMENTITIOUS SOUND ABSORBENT MATERIAL
- 2 1/2"
- 1 1/2"
- 2"-0"
- 1'-0"
- 1 1/2"
- 6"
- 6"
- 3/8"
- 2"
- 2"
- 1 1/2"
- 2 1/2"
- 1 1/2"



00	08/04				DRAWN PER BECO EM001151
SPV	DATE	BY	CHECK	APP.	DESCRIPTION

THIS DRAWING IS INTENDED SOLELY FOR
BART USE IN ORDER TO DESIGN,
CONSTRUCT, ALTER, OR MAINTAIN ITS
FACILITIES. BART DOES NOT RECOMMEND
OR WARRANT USE OF THE DRAWING FOR
ANY OTHER PURPOSE. USE OF THE
DRAWING BEYOND THE INTENDED PURPOSE
WILL BE AT USER'S OWN RISK.

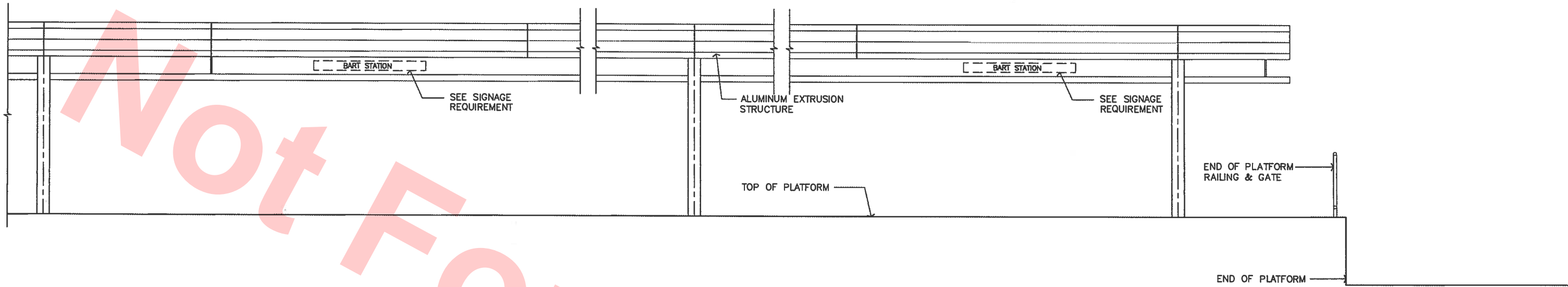


DESIGNED:	DATE:
BATC	12/91
DRAWN:	
CHECKED:	
APPROVED:	

**BART FACILITIES STANDARDS
ARCHITECTURAL**

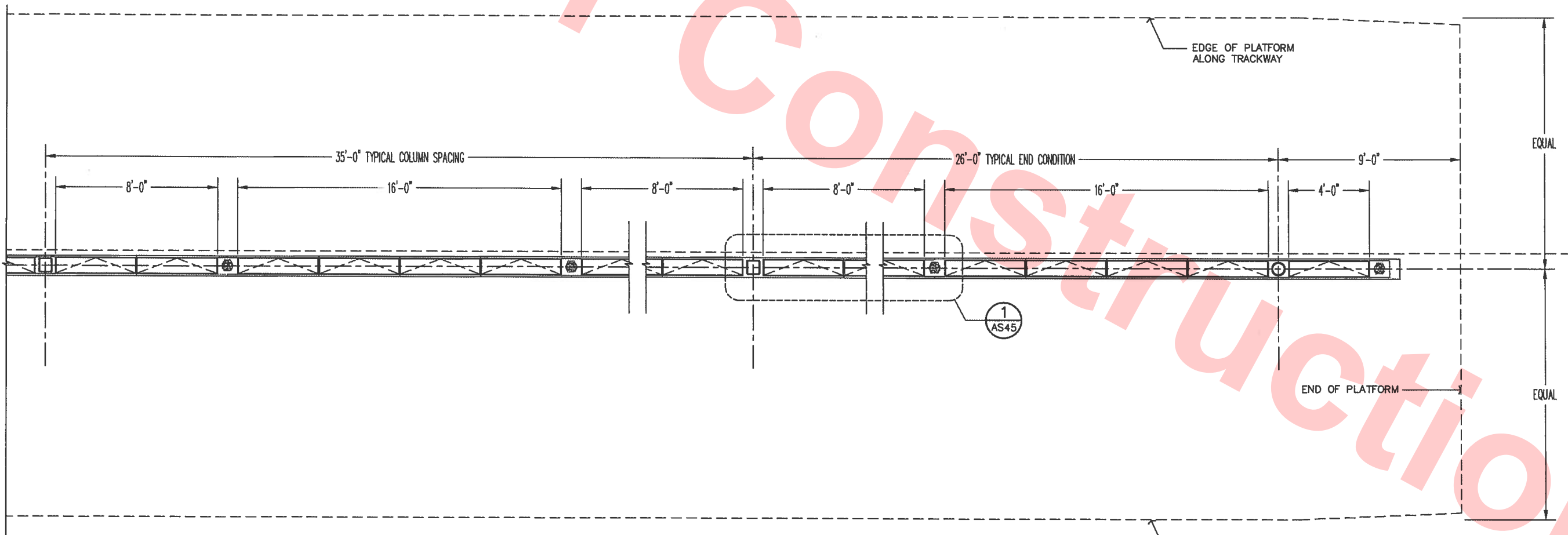
PLATFORM EDGE DETAILS

REF. NO.		AS42	
SIZE:	SCALE		
D		NOTED	
CONTRACT			REV.
			00
SHEET NO.		PG. NO.	
AS42		1101	



ELEVATION
SCALE: NONE

1
AS44



REFLECTED PLAN
SCALE: NONE

2
AS44

00	08/04				DRAWN PER BECO EM001151
REV.	DATE	BY	CHKD.	APP.	DESCRIPTION

THIS DRAWING IS INTENDED SOLELY FOR BART USE IN ORDER TO DESIGN, CONSTRUCT, ALTER, OR MAINTAIN ITS FACILITIES. BART DOES NOT RECOMMEND OR WARRANT USE OF THE DRAWING FOR ANY OTHER PURPOSE. USE OF THE DRAWING BEYOND THE INTENDED PURPOSE WILL BE AT USER'S OWN RISK.

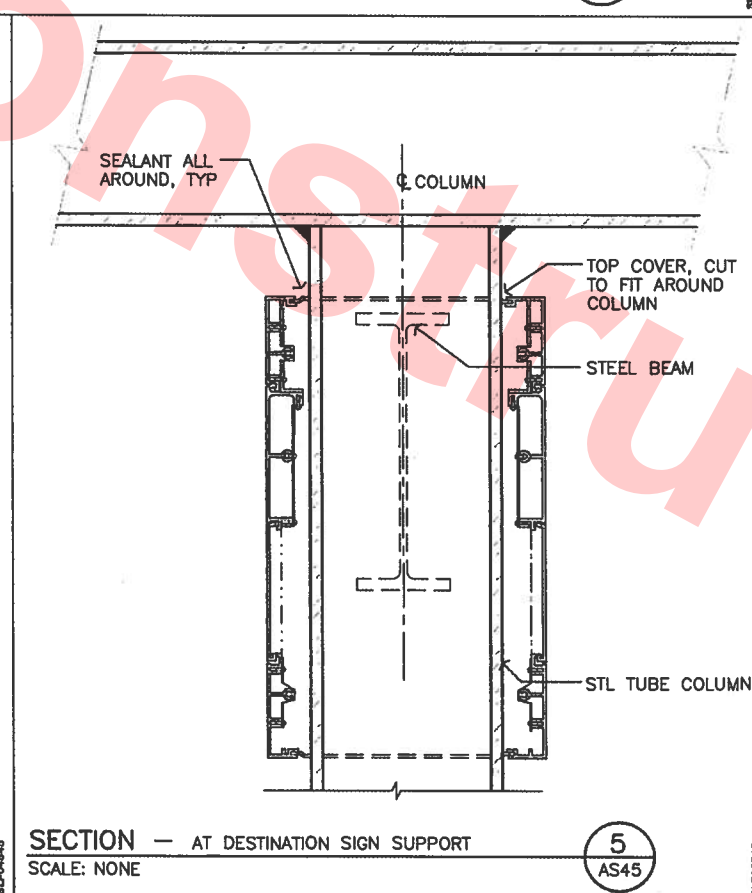
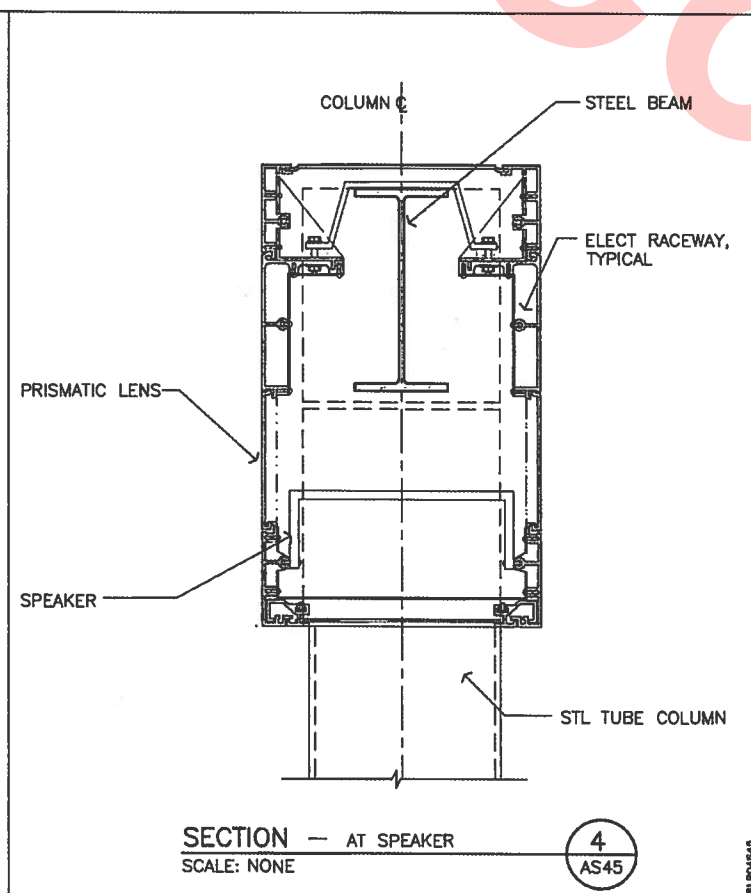
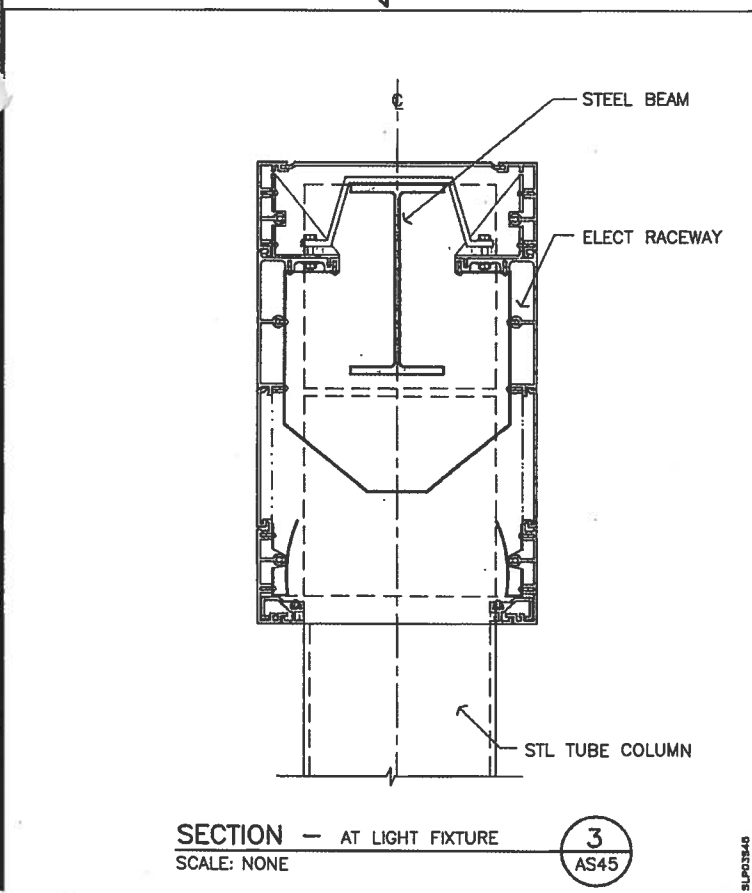
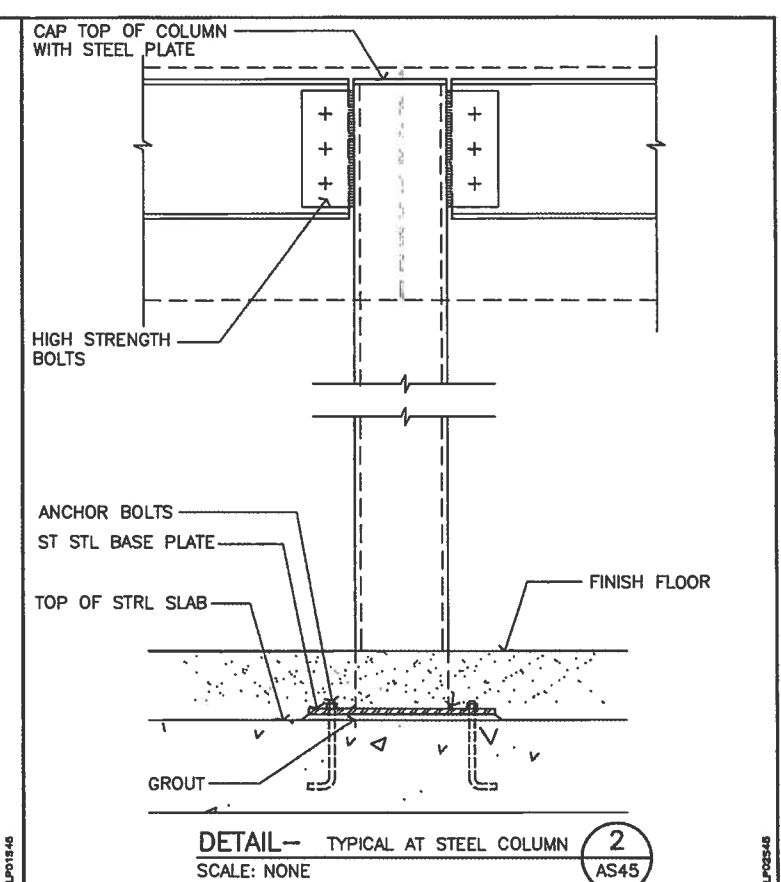
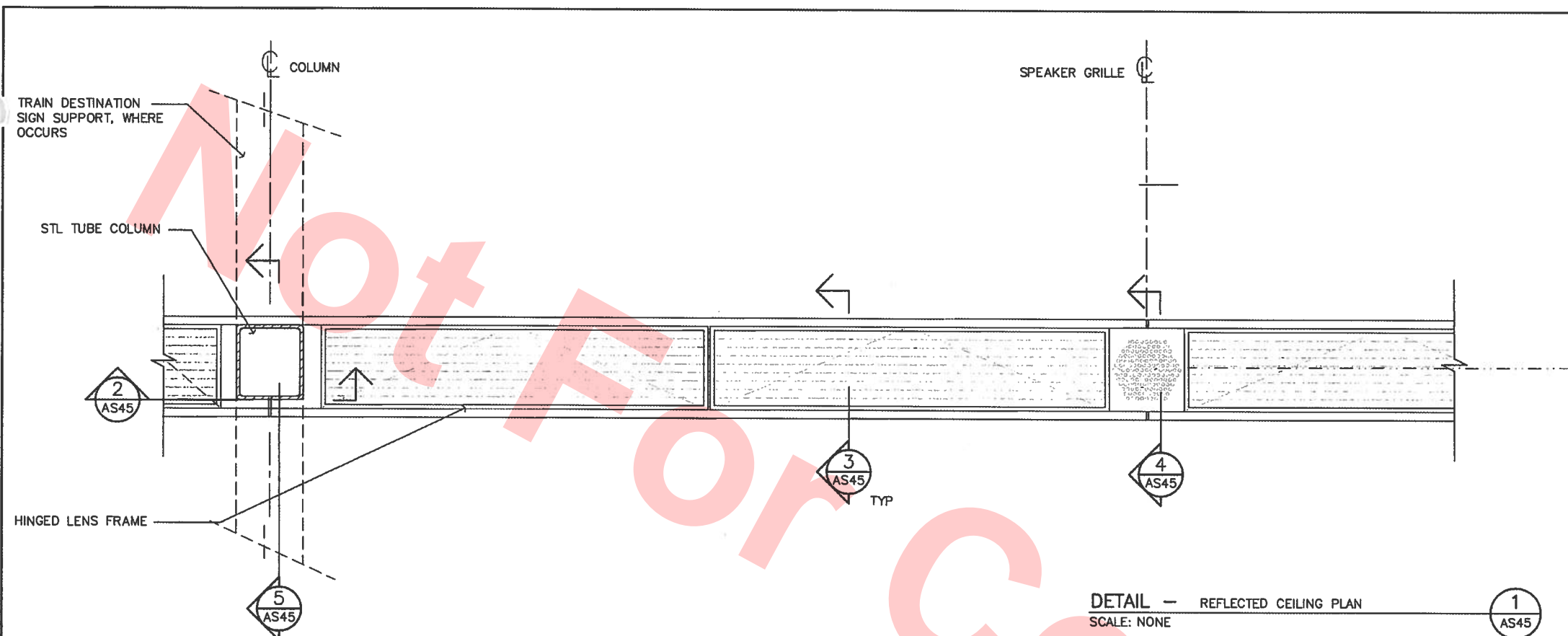


DESIGNED: BATC	DATE: 12/91
DRAWN:	
CHECKED:	
APPROVED:	

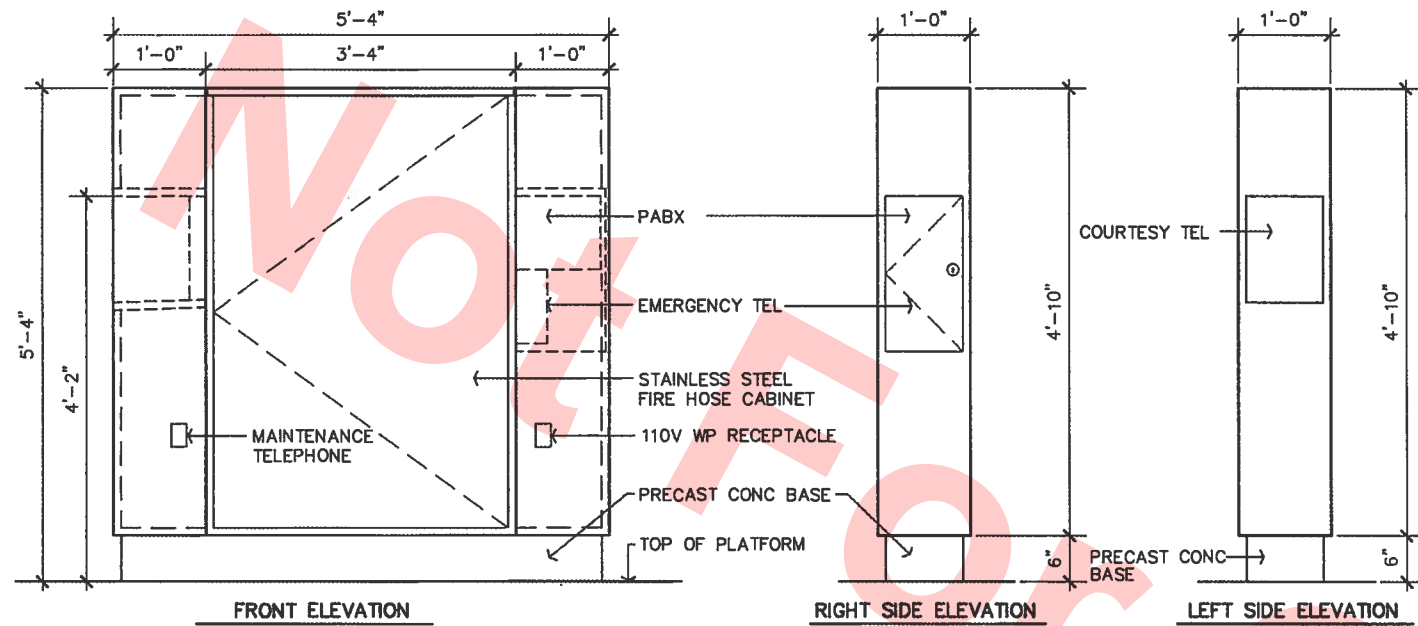
**BART FACILITIES STANDARDS
ARCHITECTURAL**

SIGNAGE/LIGHTING/PUBLIC ADDRESS STRUCTURE
- PROFILE

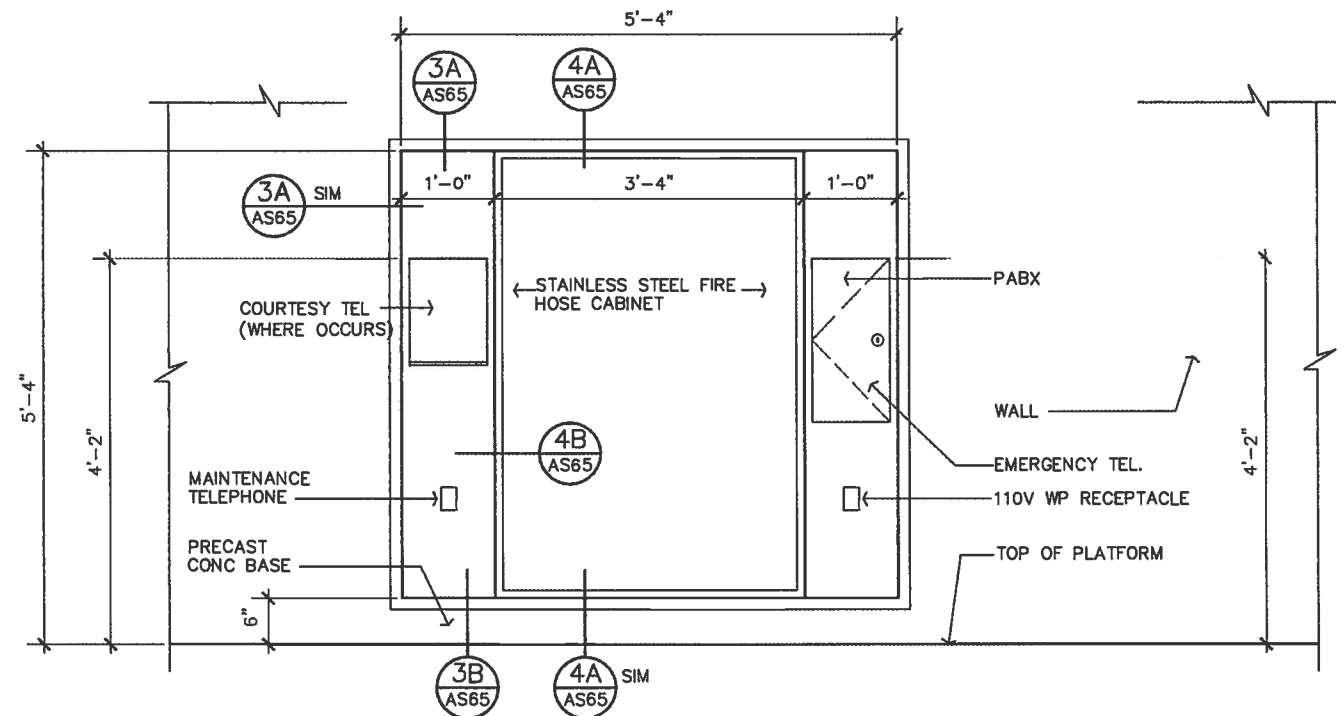
REF. NO. AS44	REV. NO. 00
SIZE: SCALE D NONE	PG. NO. 1102
CONTRACT	
SHEET NO. AS44	



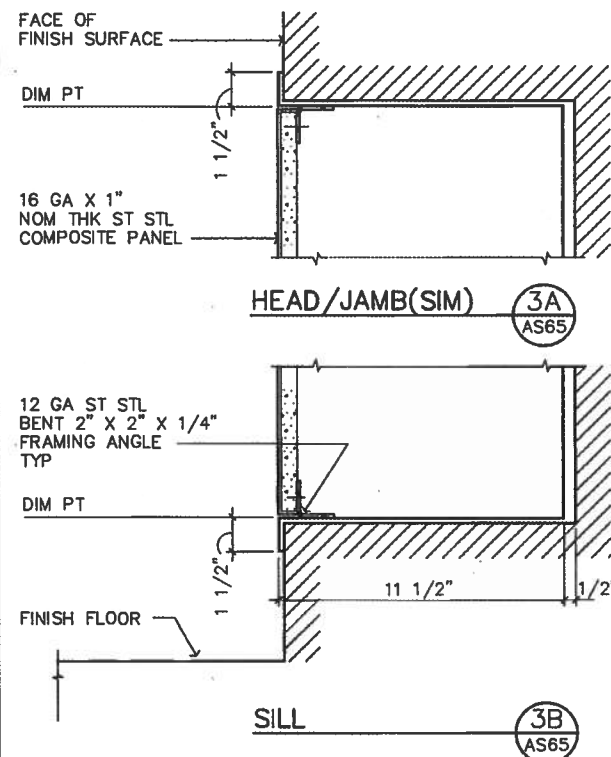
Approved for SVRT Use – Effective June 1, 2010



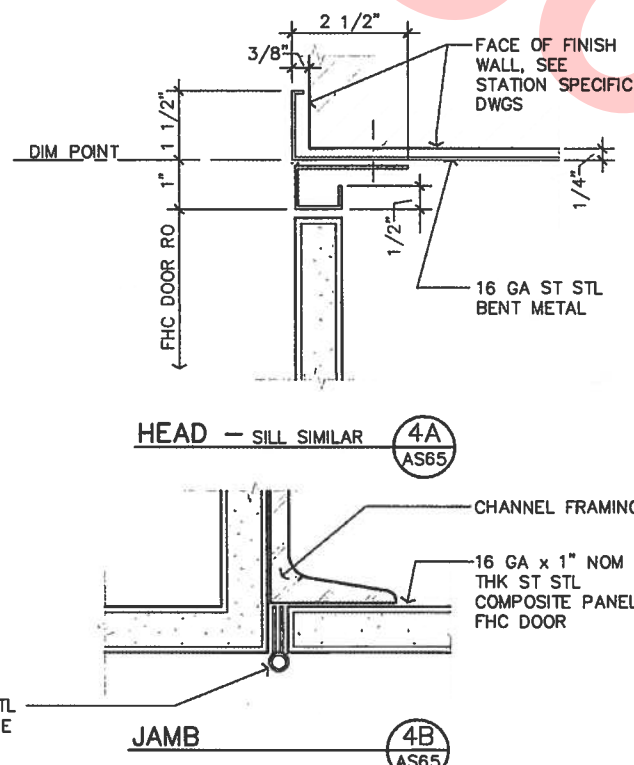
ELEVATIONS — FIRE HOSE CABINET TYPE "A" WITH
SCALE: 1"=1'-0"



ELEVATION—RECESSED FIRE HOSE CABINET TYPE "B"
SCALE: 1"=1'-0"



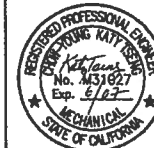
DETAIL — RECESSED FHC TYPE "B"
SCALE: 3"=1'-0"



DETAIL — FHC DOOR
SCALE: HALF SIZE

REV.	DATE	BY	CHKD.	APP.	DESCRIPTION
00	08/04				DRAWN PER BECO EM001151

THIS DRAWING IS INTENDED SOLELY FOR BART USE IN ORDER TO DESIGN, CONSTRUCT, ALTER, OR MAINTAIN ITS FACILITIES. BART DOES NOT RECOMMEND OR WARRANT USE OF THE DRAWING FOR ANY OTHER PURPOSE. USE OF THE DRAWING BEYOND THE INTENDED PURPOSE WILL BE AT USER'S OWN RISK.



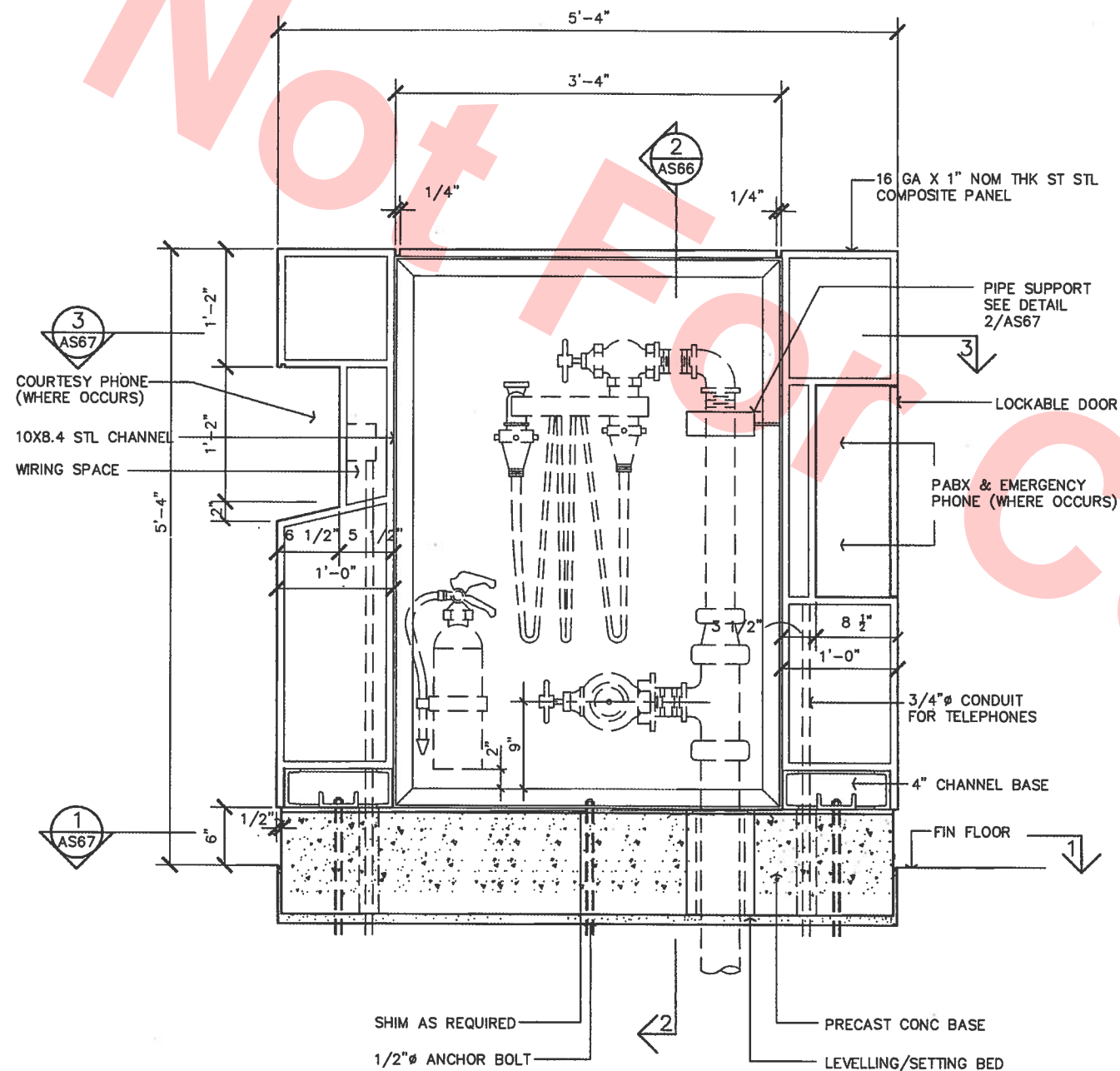
DESIGNED:	BATC
DRAWN:	
CHECKED:	
APPROVED:	

DATE: 10/93

**BART FACILITIES STANDARDS
ARCHITECTURAL**

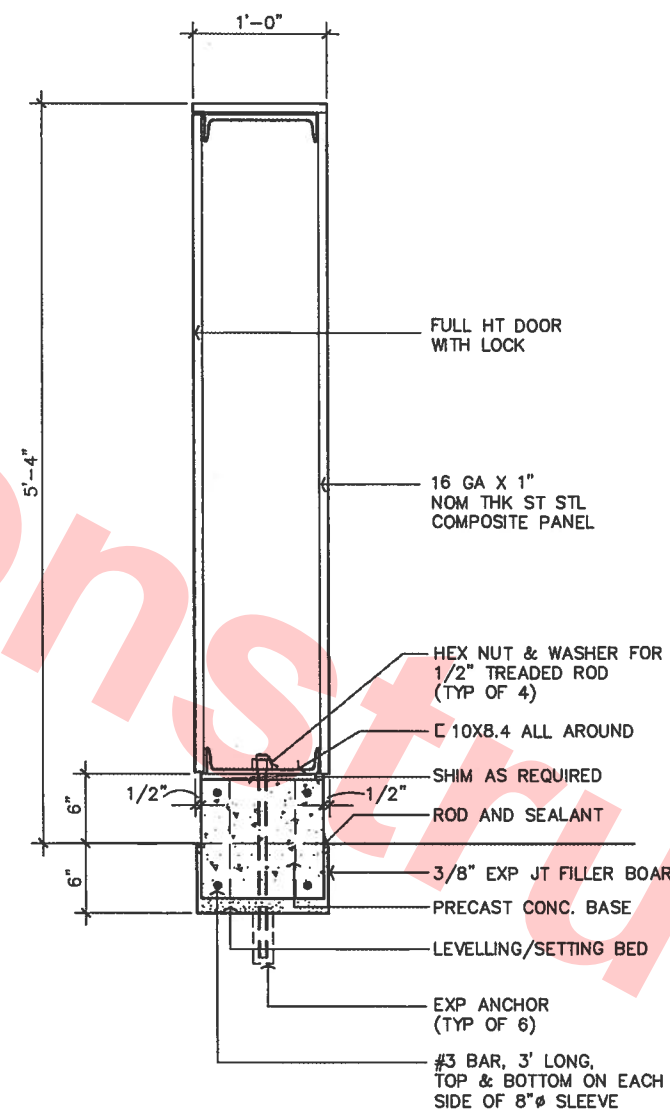
FIRE HOSE CABINETS

REF. NO.	AS65
SIZE/SCALE	D NOTED
CONTRACT	REV. 00
SHEET NO.	PG. NO.
AS65	1104



SECTION—FREESTANDING FIRE HOSE CABINET
SCALE: 1 1/2"=1'-0"

1
AS66

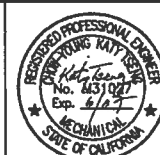


SECTION—FREESTANDING FIRE HOSE CABINET
SCALE: 1 1/2"=1'-0"

2
AS66

REV.	DATE	BY	CHKD.	APP.	DESCRIPTION
00	08/04				DRAWN PER BECO EM001151

THIS DRAWING IS INTENDED SOLELY FOR BART USE IN ORDER TO DESIGN, CONSTRUCT, ALTER, OR MAINTAIN ITS FACILITIES. BART DOES NOT RECOMMEND OR WARRANT USE OF THE DRAWING FOR ANY OTHER PURPOSE. USE OF THE DRAWING BEYOND THE INTENDED PURPOSE WILL BE AT USER'S OWN RISK.

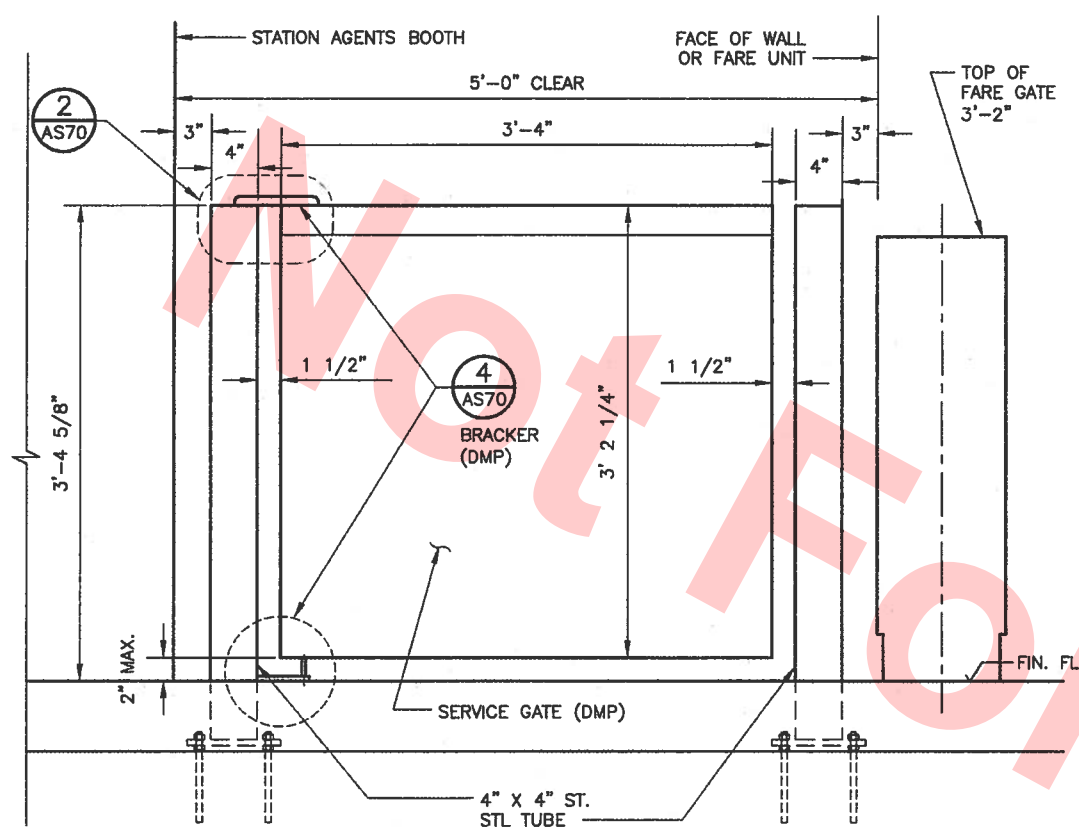


DESIGNED:	BATC
DATE:	10/93
DRAWN:	
CHECKED:	
APPROVED:	

**BART FACILITIES STANDARDS
ARCHITECTURAL**

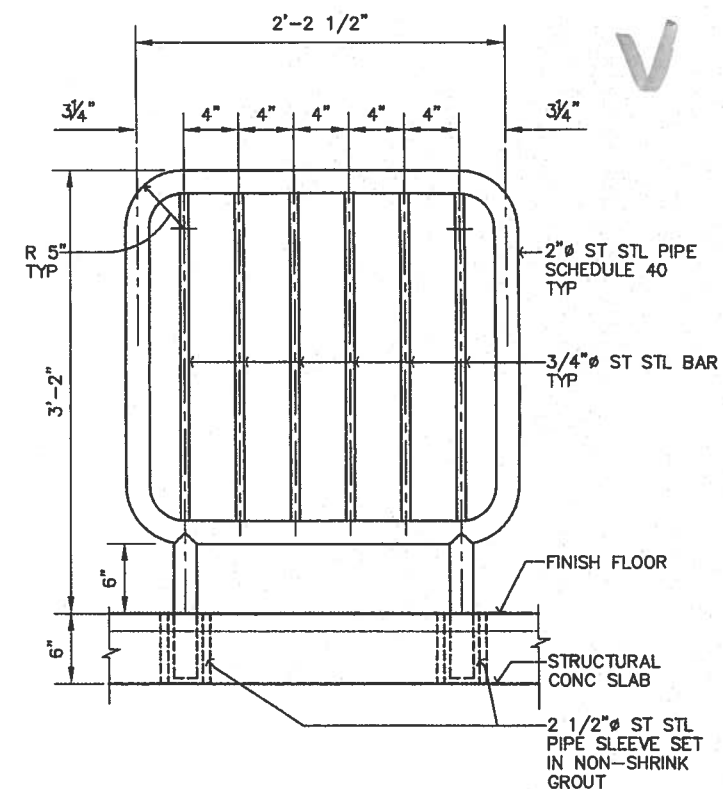
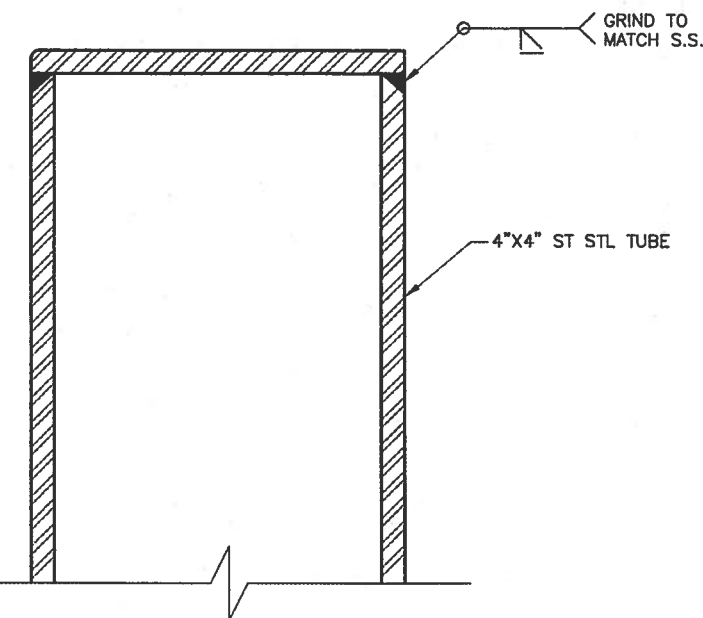
FIRE HOSE CABINETS

REF. NO.	AS66
SIZE: SCALE	D NOTED
CONTRACT	REV. 00
SHEET NO.	PG. NO.
AS66	1105

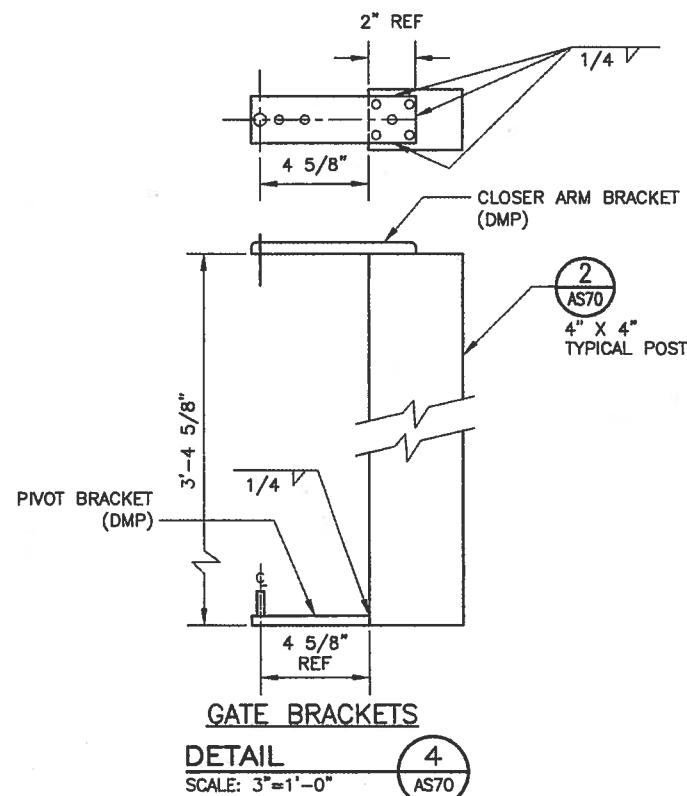


ELEVATION — SERVICE GATE
SCALE: 1 1/2"=1'-0"

DETAIL — SERVICE GATE POST
SCALE: FULL SIZE



ELEVATION — REMOVABLE BARRIER RAIL — TYP
SCALE: 1 1/2"=1'-0"



DETAIL — GATE BRACKETS
SCALE: 3"=1'-0"

REV.	DATE	BY	CHKD.	DESCRIPTION
01	09/08	12/1	8	REVISED PER BECO EM001537

THIS DRAWING IS INTENDED SOLELY FOR BART USE IN ORDER TO DESIGN, CONSTRUCT, ALTER, OR MAINTAIN ITS FACILITIES. BART DOES NOT RECOMMEND OR WARRANT USE OF THE DRAWING FOR ANY OTHER PURPOSE. USE OF THE DRAWING BEYOND THE INTENDED PURPOSE WILL BE AT USER'S OWN RISK.

ORIGINAL DRAWING BEARS THE REGISTERED ARCHITECT SEAL NO.: 25072 AND SIGNATURE OF: TIAN A. FENG

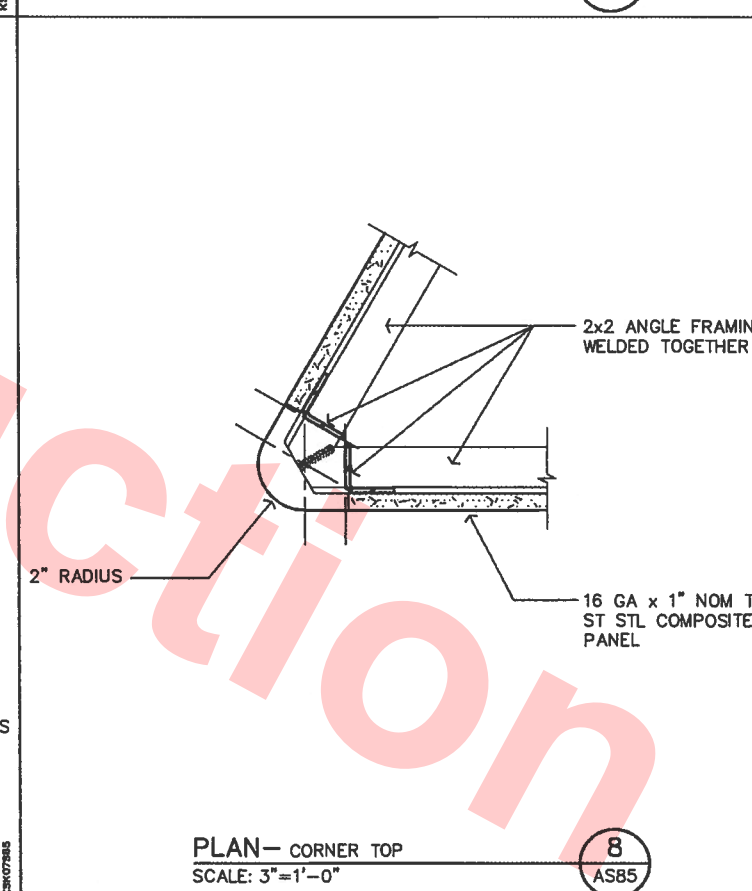
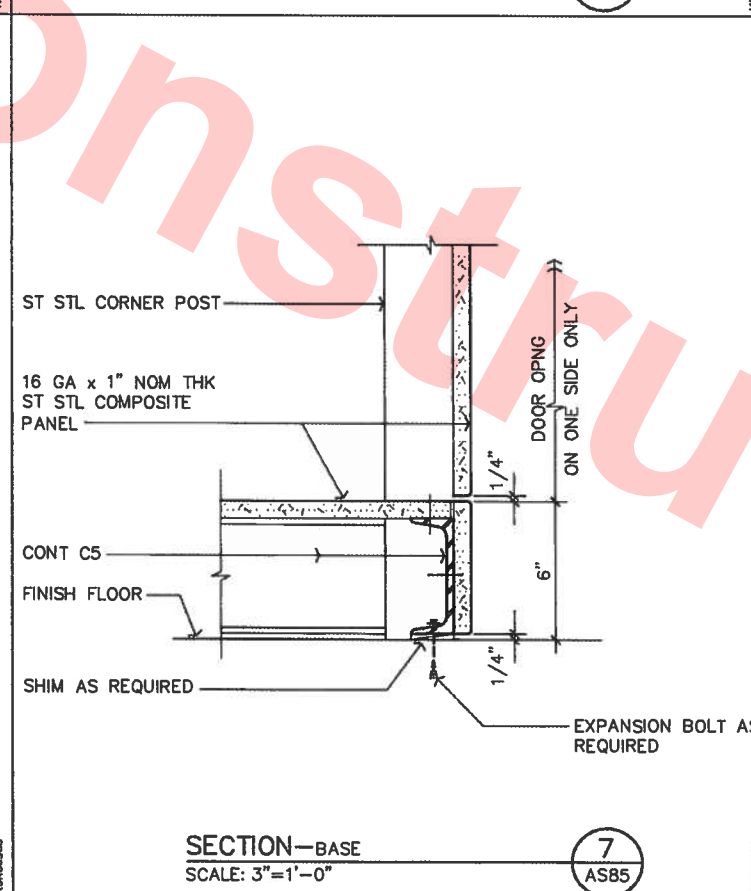
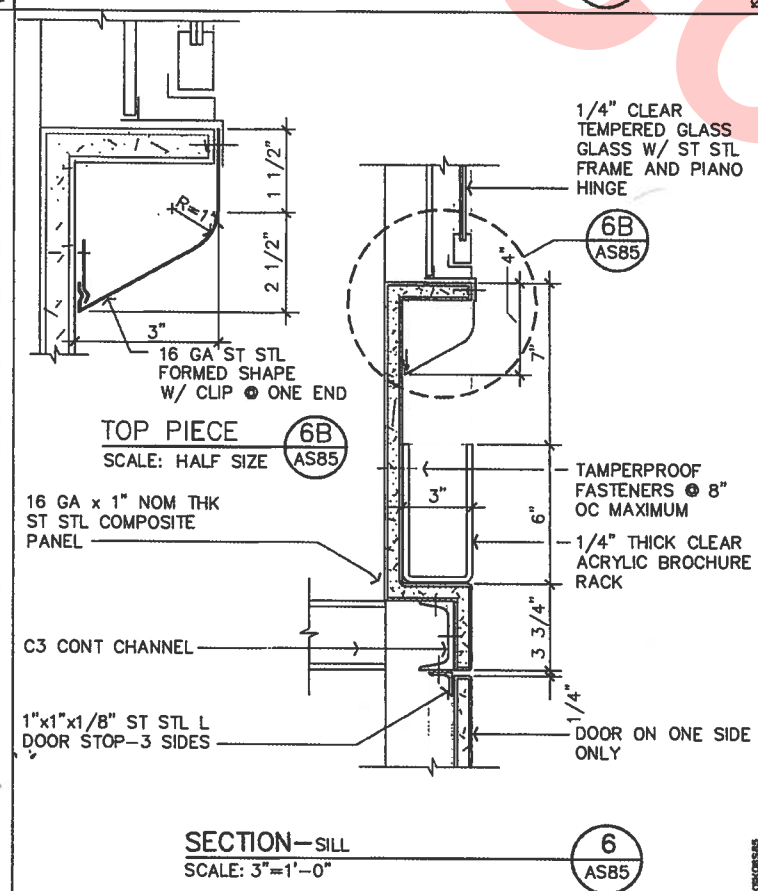
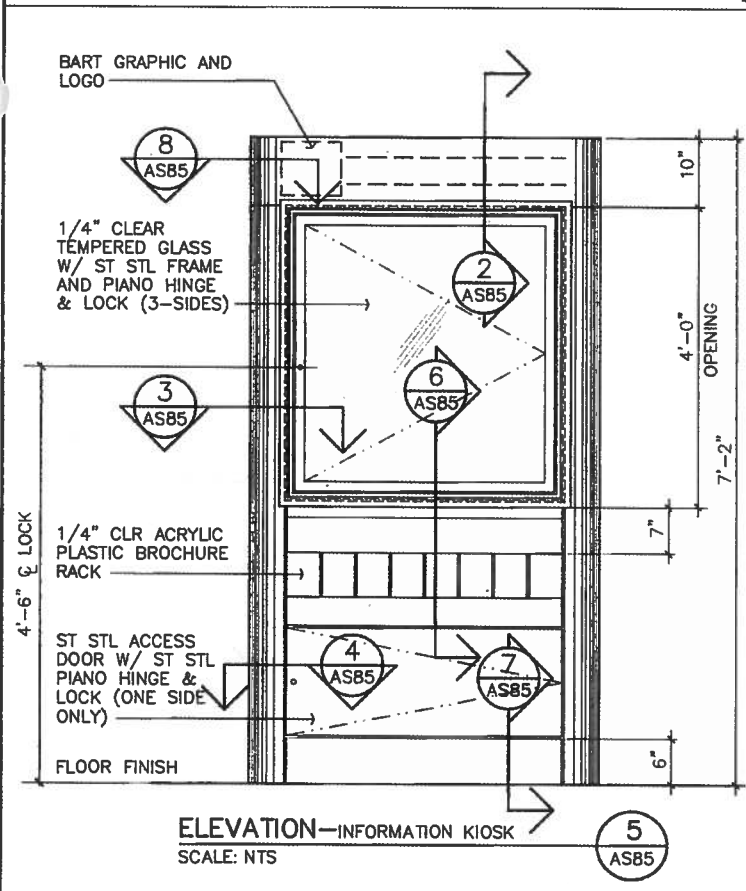
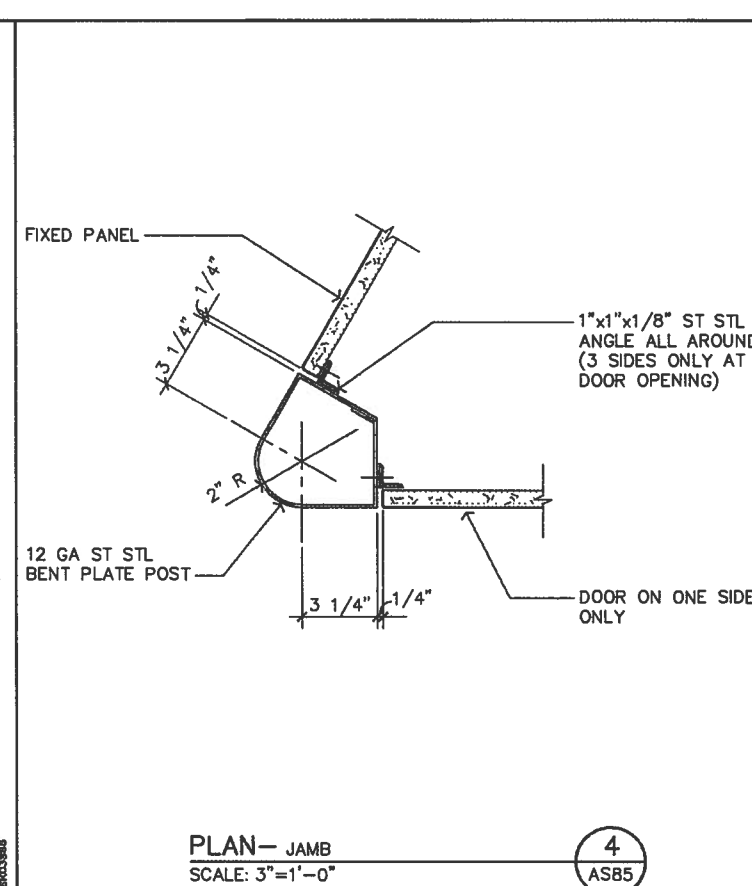
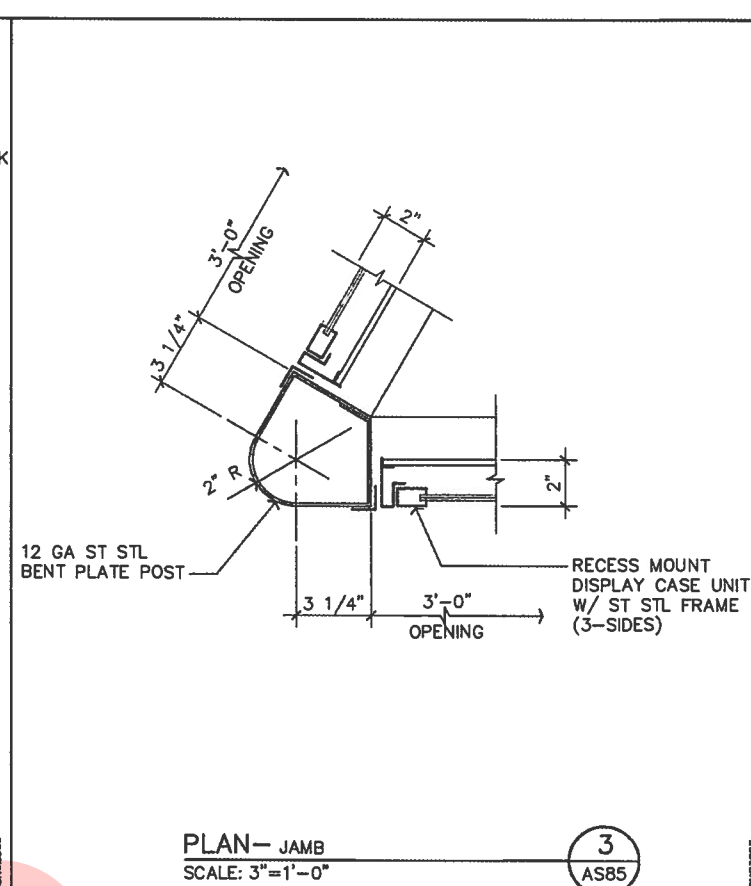
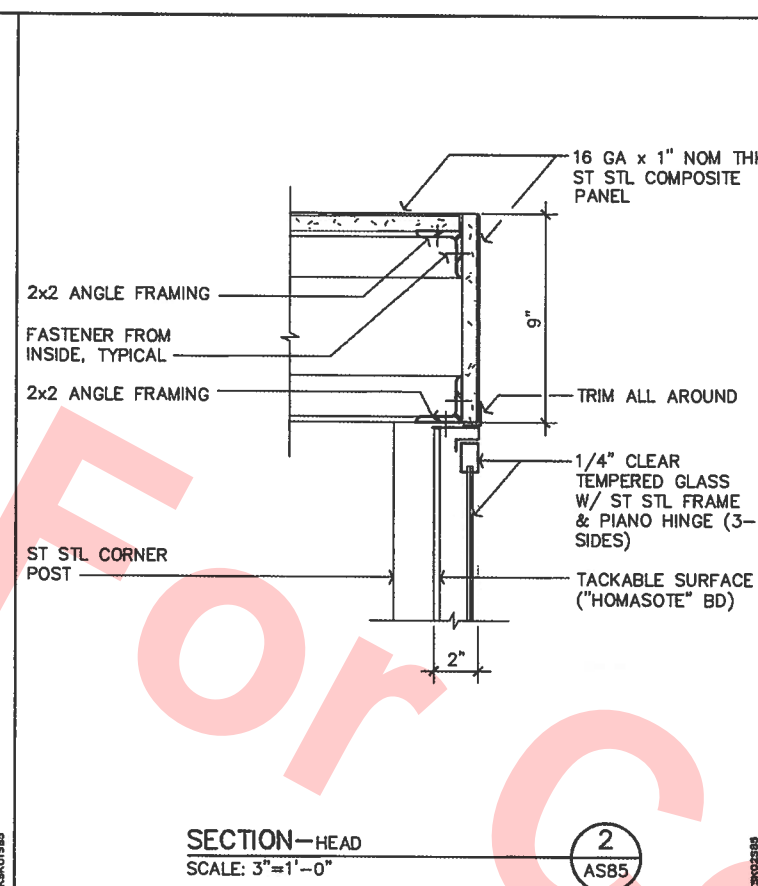
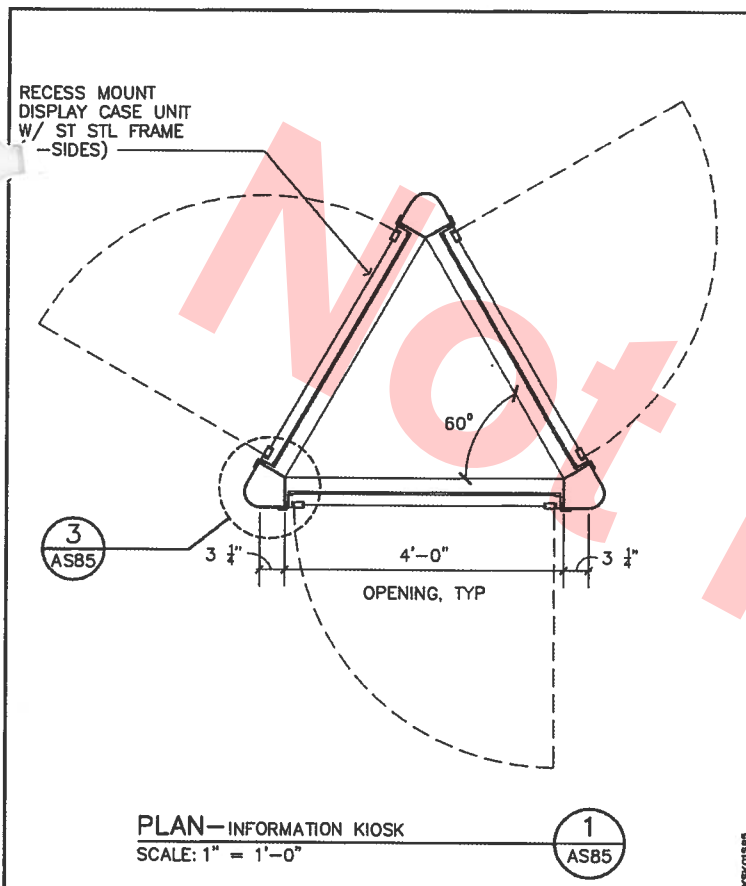


DESIGNED: BATC	DATE: 12/91
DRAWN: [Signature]	09/08
CHECKED: [Signature]	09/08
APPROVED: [Signature]	09/08

BART FACILITIES STANDARDS ARCHITECTURAL

SERVICE GATES AND BARRIER DETAILS

REF. NO. AS70	SIZE: SCALE D NTS
CONTRACT	REV. 01
SHEET NO. AS70	PG. NO. 1107



00	08/04					DRAWN PER BECO EM001151
REV.	DATE	BY	CHKD.	APP.		DESCRIPTION

THIS DRAWING IS INTENDED SOLELY FOR BART USE IN ORDER TO DESIGN, CONSTRUCT, ALTER, OR MAINTAIN ITS FACILITIES. BART DOES NOT RECOMMEND OR WARRANT USE OF THE DRAWING FOR ANY OTHER PURPOSE. USE OF THE DRAWING BEYOND THE INTENDED PURPOSE WILL BE AT USER'S OWN RISK.



DESIGNED:	BATC	DATE:	10/93
DRAWN:			
CHECKED:			
APPROVED:			

BART FACILITIES STANDARDS ARCHITECTURAL

INFORMATION KIOSK

REF. NO.	AS85
SIZE: SCALE	D NOTED
CONTRACT	REV. 00
SHEET NO.	AS85
PG. NO.	1110