



RECEIVED
SVBX PDCC
JULY 02, 2013

P0728-C700-DU-012WP01.RFC.R3

DU-012

SSH JV

SCVWD 42" Milpitas Pipeline Design Unit 012 – Work Package 01 Ready for Construction Revision 3

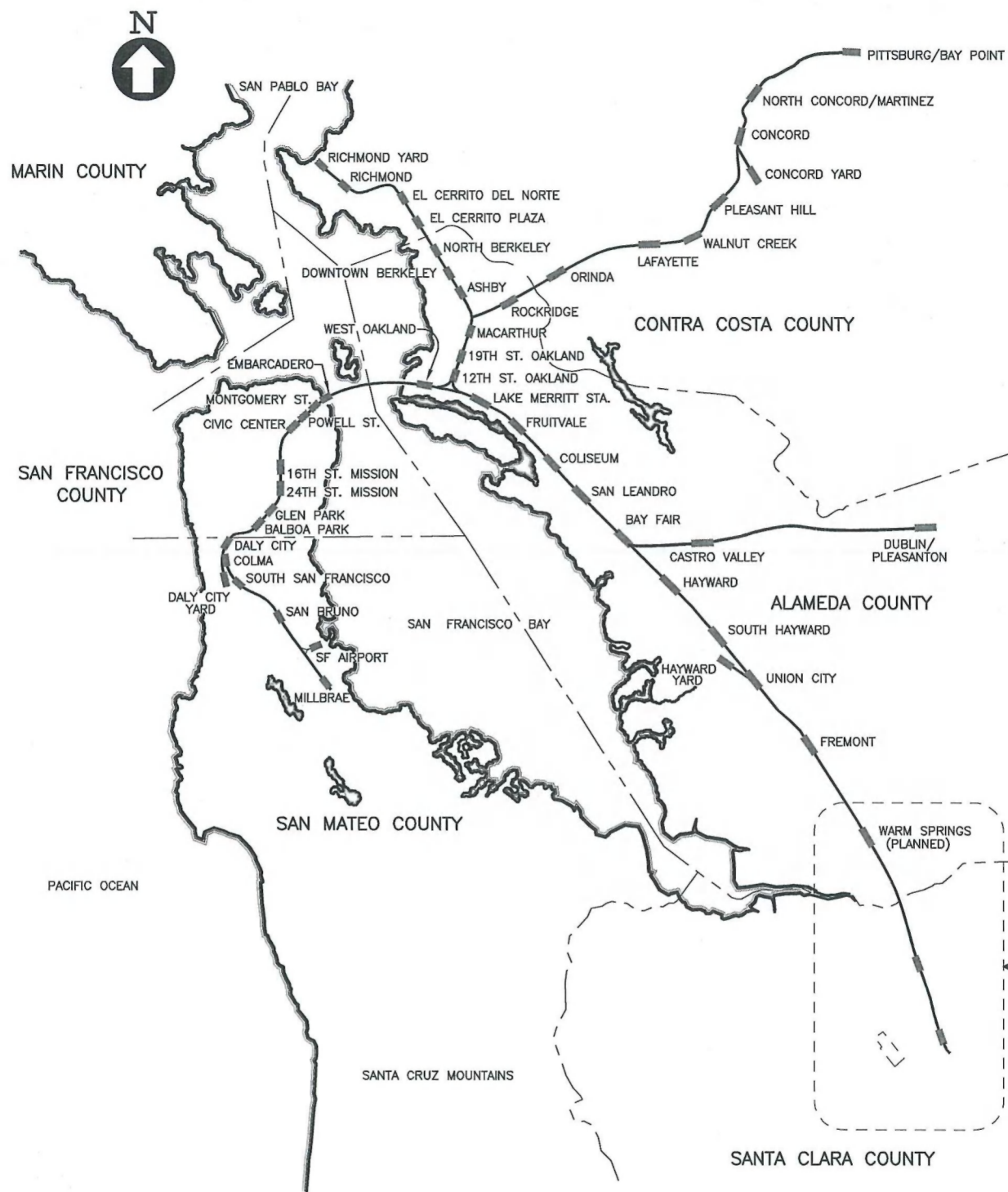
SVBX C700

Monday, July 01, 2013

HALF SIZE
COPY

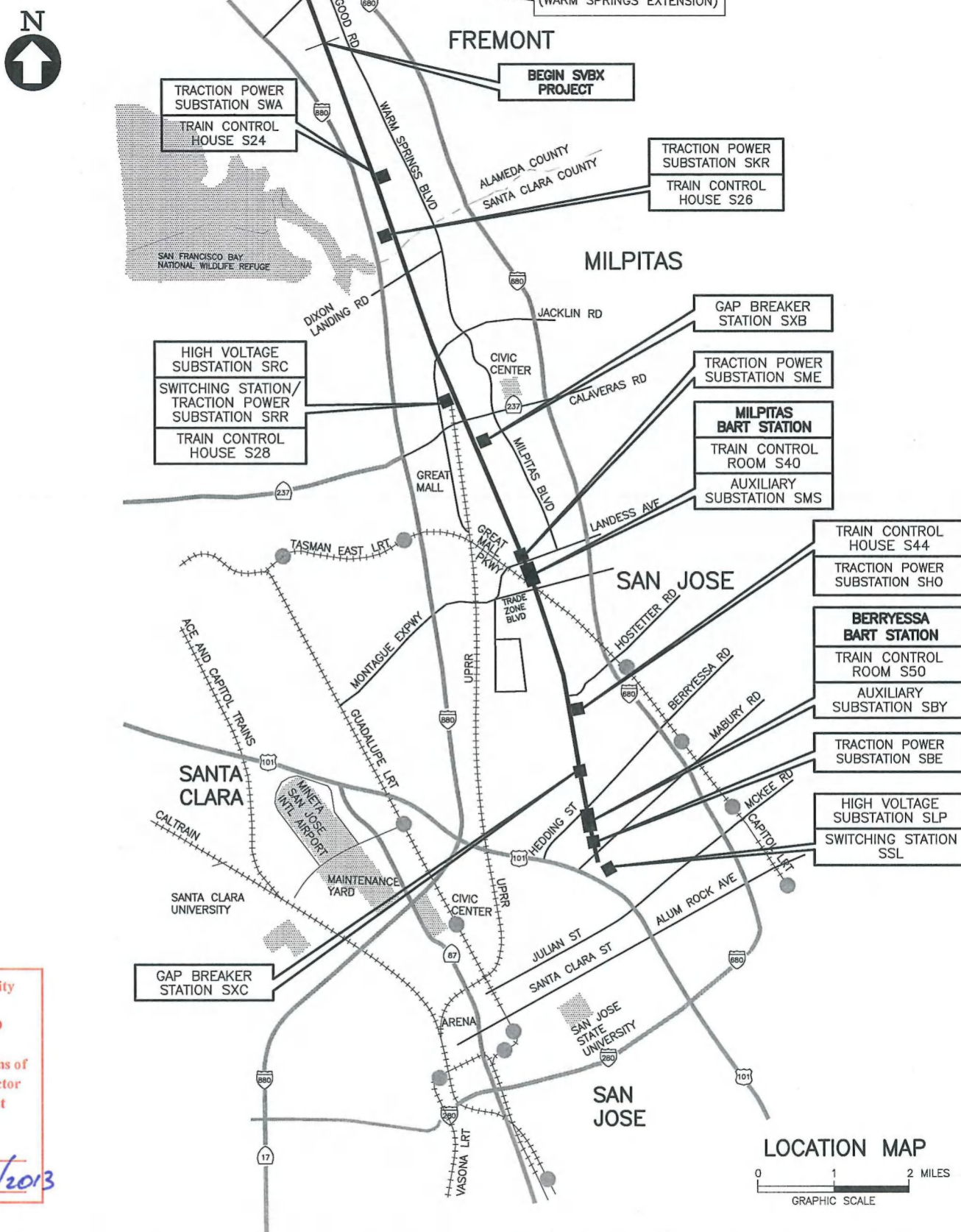


B1307-F053



SEE LOCATION MAP

Santa Clara Valley Transportation Authority
 X NO EXCEPTION TAKEN
 MAKE CORRECTIONS NOTED
 AMEND AND RESUBMIT
 Any action shown above is subject to the terms of the contract and does not relieve the contractor of any of its obligations under the contract including design and detailing.
 Contract No.: DB11002F
 By: *[Signature]* Date: 03/29/2013



Jun 15, 2013 5:46pm C:\projects\scv\scvwd\42in\rfc\17\c700-s-lm-x003.dwg
 k Muller

REV	DATE	BY	SUB	APP	DESCRIPTION
1	20130117				READY FOR CONSTRUCTION
0	20121019				READY FOR CONSTRUCTION

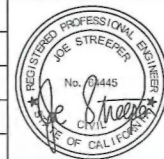
DESIGNED BY
J. STREEPER

DRAWN BY
K. MULLER

CHECKED BY
B. WAGNER

IN CHARGE
J. STREEPER

DATE
20130117



Skanska Shimmick Herzog

1436 California Circle
 Milpitas, California 95035
 A Joint Venture

HMM

Lackwood, Andrews & Newnam, Inc.
 A LEAD A DAILY COMPANY

T-Y-LIN INTERNATIONAL

SUBMITTED *[Signature]* APPROVED *[Signature]*

BART
 SILICON VALLEY

BART SILICON VALLEY BERRYESSA EXTENSION

LINE, TRACK, STATIONS, AND SYSTEMS

TITLE SHEET

CADD FILENAME C700-S-LM-X003.DWG	SIZE D	SCALE AS SHOWN
CONTRACT NO. C700	SHEET NO. LM X003	REV. 1
AREA CODE	PAGE NO. 0001	

PAGE NO.	DWG NO.	REV NO.	TITLE
GENERAL			
0001	LM-X003	1	TITLE SHEET
0002	LM-X030	2	INDEX OF DRAWINGS
0003	LM-X230	1	GENERAL ABBREVIATIONS, SHEET 1 OF 4
0004	LM-X231	1	GENERAL ABBREVIATIONS, SHEET 2 OF 4
0005	LM-X232	1	GENERAL ABBREVIATIONS, SHEET 3 OF 4
0006	LM-X233	1	GENERAL ABBREVIATIONS, SHEET 4 OF 4
0007	LM-U001A	1	SUPPLEMENTAL UTILITY NOTES, ABBREVIATIONS AND SYMBOLS
0008	LM-U030	1	MONTAGUE EXPRESSWAY, SOUTH MILPITAS BOULEVARD, EAST CAPITOL AVENUE, PIPER DRIVE DRAWING LAYOUT INDEX
SURVEY CONTROL			
**	LS-C030	P	SURVEY CONTROL DATA NOTES
**	LS-C031	P	SURVEY CONTROL DATA INDEX SHEET
**	LS-C043	P	SURVEY CONTROL DATA 12 OF 18
**	LS-C044	P	SURVEY CONTROL DATA 13 OF 18
EXISTING UTILITIES			
0009	LM-U101A	1	MONTAGUE EXPRESSWAY EXISTING UTILITIES PLAN AND DATA MO1 17+00 TO MO1 22+00
0010	LM-U109A	1	SOUTH MILPITAS BOULEVARD EXISTING UTILITIES PLAN AND DATA S1 371+25 TO S1 374+75
0011	LM-U110A	1	SOUTH MILPITAS BOULEVARD EXISTING UTILITIES PLAN AND DATA S1 374+75 TO S1 379+25
0012	LM-U113A	1	EAST CAPITOL AVENUE EXISTING UTILITIES PLAN AND DATA CA1 18+50 TO CA1 22+30
0013	LM-U114A	1	EAST CAPITOL AVENUE EXISTING UTILITIES PLAN AND DATA CA1 22+30 TO S1 384+00
0014	LM-U115A	1	CAPITOL/MONTAGUE/PIPER EXISTING UTILITIES DATA
0015	LM-U116A	1	CAPITOL/MONTAGUE/PIPER EXISTING UTILITIES DATA
0016	LM-U117A	1	CAPITOL/MONTAGUE/PIPER EXISTING UTILITIES DATA
COMPOSITE UTILITIES			
0017	LM-U201A	1	MONTAGUE EXPRESSWAY COMPOSITE UTILITIES RELOCATION PLAN PR2 19+70 TO S1 371+25
0018	LM-U209A	1	SOUTH MILPITAS BOULEVARD COMPOSITE UTILITIES RELOCATION PLAN S1 371+25 TO S1 374+75
0019	LM-U210A	1	SOUTH MILPITAS BOULEVARD COMPOSITE UTILITIES RELOCATION PLAN S1 374+75 TO S1 379+25
0020	LM-U213A	1	EAST CAPITOL AVENUE COMPOSITE UTILITIES RELOCATION PLAN CA1 18+50 TO CA1 22+30
0021	LM-U214A	1	EAST CAPITOL AVENUE COMPOSITE UTILITIES RELOCATION PLAN CA1 22+30 TO S1 384+00

PAGE NO.	DWG NO.	REV NO.	TITLE
UTILITY RELOCATION - 42" WATER			
0022	LM-U501	1	MONTAGUE EXPRESSWAY UTILITY RELOCATION PLAN (42" WATER) PR2 19+70 TO S1 371+25
0023	LM-U509	1	SOUTH MILPITAS BOULEVARD UTILITY RELOCATION PLAN (42" WATER) S1 371+25 TO S1 374+75
0024	LM-U510	1	SOUTH MILPITAS BOULEVARD UTILITY RELOCATION PLAN (42" WATER) S1 374+75 TO S1 379+25
0025	LM-U513	1	EAST CAPITOL AVENUE UTILITY RELOCATION PLAN (42" WATER) CA1 18+50 TO CA1 22+30
0026	LM-U514	1	EAST CAPITOL AVENUE UTILITY RELOCATION PLAN (42" WATER) CA1 22+30 TO CA1 27+50
UTILITY PROFILE - 42" WATER			
0027	LM-U530	1	PROFILE "W42" 42" WATER LINE
0028	LM-U531	1	PROFILE "W42" 42" WATER LINE
0029	LM-U532	3	PROFILE "W42" 42" WATER LINE
DETAILS - 42" WATER			
0030	LS-U450	1	SCVWD WATER PIPELINE DETAILS FIELD JOINTS
0031	LS-U451	1	SCVWD WATER PIPELINE DETAILS JOINTS
0032	LS-U452	1	SCVWD WATER PIPELINE DETAILS NOZZLE
0033	LS-U453	1	SCVWD WATER PIPELINE DETAILS TEMPORARY ACCESS HOLE
0034	LS-U454	1	SCVWD WATER PIPELINE DETAILS BULKHEADS
0035	LS-U456	1	SCVWD WATER PIPELINE DETAILS TYPICAL WELDS
0036	LS-U457	2	SCVWD WATER PIPELINE DETAILS PRECAST VAULTS
	LS-U457A	0	SCVWD WATER PIPELINE DETAILS PRECAST VAULTS
0037	LS-U458	2	SCVWD WATER PIPELINE DETAILS BASE SLABS
	LS-U458A	0	SCVWD WATER PIPELINE DETAILS BASE SLABS
0038	LS-U459	1	SCVWD WATER PIPELINE DETAILS AIR RELEASE VALVES
0039	LS-U460	1	SCVWD WATER PIPELINE DETAILS TRENCH SECTIONS

PAGE NO.	DWG NO.	REV NO.	TITLE
DETAILS - 42" WATER (CONTINUED)			
0040	LS-U461	1	SCVWD WATER PIPELINE DETAILS TRENCH SECTIONS
0041	LS-U462	1	SCVWD WATER PIPELINE DETAILS TRENCH CUTOFF
0042	LS-U463	1	SCVWD WATER PIPELINE DETAILS TELEMETRY CABLE INSTALLATIONS
0043	LS-U464	1	SCVWD WATER PIPELINE DETAILS TELEMETRY CABLE PULLBOX
0044	LS-U465	1	SCVWD WATER PIPELINE DETAILS TEST LEAD AND BOND CABLE DETAILS
0045	LS-U466	1	SCVWD WATER PIPELINE DETAILS CORROSION CONTROL TEST STATION
0046	LS-U467	1	SCVWD WATER PIPELINE DETAILS INSULATING JOINTS
0047	LS-U469	1	SCVWD WATER PIPELINE PIPE DATA 42" DIAMETER
0048	LS-U471	1	SCVWD WATER PIPELINE DETAILS TEST STATION INSTALLATION SCHEMATIC DETAILS
0049	LS-U472	1	SCVWD WATER PIPELINE DETAILS VAULT LADDER
0050	LS-U474	1	SCVWD WATER PIPELINE DETAILS SEALANT
0051	LS-U476	1	SCVWD WATER PIPELINE DETAILS ARV ASSEMBLY AND MANHOLE LETTERING

Not Provided

Not Provided

Not Provided

Santa Clara Valley Transportation Authority
X NO EXCEPTION TAKEN
MAKE CORRECTIONS NOTED
AMEND AND RESUBMIT
 Any action shown above is subject to the terms of the contract and does not relieve the contractor of any of its obligations under the contract including design and detailing.
 Contract No.: DB11002F
 By: *[Signature]* Date: 7/8/13

NOTE:
 ** FOR REFERENCE ONLY

Jul 01, 2013 12:27pm C:\projects\scvwd\copy of mbi-templates (30)\mbs\templates\0127\mbs\scvwd\0127-05-LM-X030.dwg

REV	DATE	BY	SUB	APP	DESCRIPTION
2	20130701				READY FOR CONSTRUCTION
1	20130117				READY FOR CONSTRUCTION
0	20121019				READY FOR CONSTRUCTION

DESIGNED BY
J. STREEPER
 DRAWN BY
K. MULLER
 CHECKED BY
B. WAGNER
 IN CHARGE
J. STREEPER
 DATE
20130701



Skanska Shimmick Herzog
 1436 California Circle
 Milpitas, California 95035
 A Joint Venture

HMM
 SUBMITTED *[Signature]*

LAN Lookwood, Andrews & Newnam, Inc. T-Y LIN INTERNATIONAL
 APPROVED *[Signature]*



LINE, TRACK, STATIONS, AND SYSTEMS
 INDEX OF DRAWINGS

CADD FILENAME C700-S-LM-X030.dwg		
SIZE	SCALE	
D	NONE	
CONTRACT NO.	C700	REV. 2
AREA CODE	SHEET NO.	PAGE NO.
LM	X030	0002

- N -

N	NORTH, NEUTRAL
(N)	NEW
N/A	NOT APPLICABLE
N/R	NON-RELATED
N12	NEGATIVE 12V DC
N28	NEGATIVE 28V DC
NAD27	NORTH AMERICAN DATUM OF 1927 (HORIZONTAL)
NAD83	NORTH AMERICAN DATUM OF 1983 (HORIZONTAL)
NAVD88	NORTH AMERICAN VERTICAL DATUM OF 1988
NB	NEGATIVE BUS, NORTH BOUND
NC	NOISE CRITERIA, NORMALLY CLOSED
NE	NORTHEAST
NEC	NATIONAL ELECTRIC CODE
NEG	NEGATIVE
NEG RET	NEGATIVE RETURN
NE'LY	NORTHEASTERLY
NGS	NATIONAL GEODETIC SURVEY
NIC	NOT IN CONTRACT
NIT	NITROGEN GAS LINE
NK	NECK
N'LY	NORTHERLY
nm	NANOMETER
NMC	NON-METALLIC CONDUIT
NMS	NETWORK MANAGEMENT SYSTEM
NO	NORMALLY OPEN, NUMBER
NO(S)	NUMBERS
NOM	NOMINAL
NON-ESS	NON-ESSENTIAL
NOR	NORMAL
NOTC	NORMALLY OPEN TIME CLOSED
NS	NEAR SIDE
NTS	NOT TO SCALE
NV	NON-VITAL
NVI	NON-VITAL INPUT
NVO	NON-VITAL OUTPUT
NVR	NETWORK VIDEO RECORDER
NW	NORTHWEST
NWCR	SWITCH NORMAL CORRESPONDENCE RELAY
NW'LY	NORTHWESTERLY
NWPR	NORMAL SWITCH REPEATER RELAY
NX	AC VOLTAGE
NX12	12VAC
NXTGEN	ARCHITECTURE OF BART'S NEXT GENERATION EQUIPMENT

- P -

OSP	OUTSIDE PLANT
OSYT	NEW/ALL YARD CONTROL TOWER
OTDR	OPTICAL TIME DOMAIN REFLECTOMETER
OTE	OVER TRACK EXHAUST
OTM	OTHER TRACK MATERIAL
OTN	OPTICAL TRANSPORT NETWORK
OV	OUTLET VELOCITY, OUTSIDE VELOCITY
OVC	OVERCROSSING

- P -

P	POWER LINE, PAINT, NON-VITAL REPEATER
P LAM	PLASTIC LAMINATE
P&S	POWER AND SUPPORT
P&W	POWER AND WAY
P.B., PB	PULLBOX OR PUSH BUTTON
P/L	PROPERTY LINE
P/O	PART OF
PA	PUBLIC ADDRESS, PLANTING AREA
PABX, PBX	PRIVATE AUTOMATIC BRANCH EXCHANGE
PAE	PEDESTRIAN ACCESS EASEMENT
PART	PARTNERS
PATS	PROPERTY ACQUISITION TRACKING SYSTEM
PB	PULL BOX, PUSH BUTTON
PC	PERSONAL COMPUTER, PRECAST, PRECAST CONCRETE, POINT OF CURVATURE, POINT OF CHANGE FROM TANGENT TO CIRCULAR CURVE
PCC	PORTLAND CEMENT CONCRETE, POINT OF COMPOUND CURVATURE
PCF	POINT OF CURVATURE, POUND PER CUBIC FOOT
PCM	PARKING CONTROL MACHINE, PULSE CODE MODULATION
PCR	PORTAL COMMUNICATIONS ROOM
PCTL	PRECAST TUNNEL LINING
PCV	PRESSURE CONTROL VALVE
PCVC	POINT OF COMPOUND VERTICAL CURVE
PD	PRESSURE DROP, PUMP DISCHARGE
PDN	PLANTER DRAIN
PDU	PROTOCOL DATA UNIT
PE	POLYETHYLENE PIPE, PNEUMATIC-ELECTRIC
PED	PEDESTRIAN
PERF	PERFORATED
PERM	PERMEABLE
PERM MTL	PERMEABLE MATERIAL
PET, PETRO,	PETROLEUM LINE
PT	POINT OF FROG
PF	PROFILE GRADE
PG	PEAK GROUND ACCELERATION
PGA	PROFILE GRADE LINE
PGL	PRIME GROUND TERMINAL
PGT	PHASE, POTHOLE
PH, Ø	PHASE
PI	POINT OF INFLECTION, POINT OF INTERSECTION
PIDS	PORTAL INTRUSION DETECTION SYSTEM
PIN	PROPERTY IDENTIFICATION NUMBER
PIP	POURED-IN-PLACE
PITO	POINT OF INTERSECTION OF TURNOUT
PIV	POST INDICATOR VALVE
PIVC	POINT OF INTERSECTION OF TWO PROFILE TANGENTS
PL	PIPE LINE, PLATE, PROPERTY LINE, PLATFORM, PLASTIC
PLAS	PLASTER
PLC	PROGRAMMABLE LOGIC CONTROLLER, PLASTIC COATED
PLP	PLASTIC PIPE
PLUM	PLUMBING
PLY	PLYWOOD
PM	POST MILE
PNL	PANEL
PNEU	PNEUMATIC
POC	PEDESTRIAN OVERCROSSING, POINT ON CIRCULAR CURVE, POINT OF CONNECTION
POE	POINT OF EQUATION, POWER OVER ETHERNET
POS	POSITIVE OR POSITION, POINT ON SPIRAL
POT	POINT ON TANGENT
POVC	POINT ON VERTICAL CURVE
POVT	POINT ON VERTICAL TANGENT
PP	POWER POLE, NON-VITAL REPEATER
PPL	PERFORMED PERMEABLE LINER
PPP	PERFORATED PLASTIC PIPE
PPTM	PLC PANEL TERMINAL INTERFACE MODULE

- P -

PR	PAIR(S), PRESSURE
PRC	POINT OF REVERSE CURVATURE
PREP	PREPARATION
PRI	PRIMARY
PRKG	PARKING
PROP	PROPERTY, PROPOSED
PROT	PROTECTOR
PRS	PAIRS
PRV	PRESSURE REDUCING VALVE
PRVAL	PRESSURE RELIEF VALVE
PRVC	POINT ON REVERSE VERTICAL CURVE
ps	PICO SECOND
PS	POINT OF SWITCH, POSITION SWITCH, POWER SUPPLY, PUMP STATION, PRE-STRESSED
PS/L	PROTECTOR SHELF/L BLOCK
PSE	PUBLIC SERVICE EASEMENT
PSI	POUNDS PER SQUARE INCH
PSIG	POUNDS PER SQUARE INCH GAUGE
PSTN	PUBLIC SWITCHED TELEPHONE NETWORK
PSUE	PUBLIC SERVICE UTILITY EASEMENT
PT	POINT, POINT OF TANGENT, POINT OF CHANGE FROM CIRCULAR CURVE TO TANGENT, POTENTIAL TRANSFORMER, PORCELAIN TILE, PETROLEUM
PTD/R	PAPER TOWEL DISPENSER & RECEPTACLE
PTEAC	PERMIT TO ENTER AND CONSTRUCT
PTM	PLATFORM TRIP MODULE
PTS	PLATFORM TRIP STATION
PTT	PUSH TO TALK
PTZ	PAN, TILT AND ZOOM
PU	POWER UNIT
PUE	PUBLIC UTILITY EASEMENT
PVC	POLYVINYL CHLORIDE (CONDUIT) OR (PIPE), POINT OF VERTICAL CURVE
PVI	POST VALVE INDICATOR
PVMT	PAVEMENT
PWR	POWER

- Q -

QR	SEQUENTIAL DETECTION RELAY
QS	QUEUING SPACE
QT	QUARRY TILE
QTY	QUANTITY

- R -

R	RADIUS, RESISTOR, RISER, RING, ROUTER
(R)	RELOCATE OR REMOVE AND SALVAGE
R NO.	RACK NUMBER
R/C	RATE OF CHANGE
R/R	RUNNING RAIL
R/W	RIGHT-OF-WAY
R1	RING 1
RA	RETURN AIR
RAA	RESCUE ASSISTANCE AREA
RAC	RIGHT ACTIVE CHANNEL
RAD	RETURN AIR DAMPER, RADIUS
RAT	REMOTE ATO TERMINAL
RB	RESILIENT RUBBER BASE
RBC	REINFORCED BOX CULVERT
RBM	RAILBOUND MANGANESE FROG
RC	REINFORCED CONCRETE, REMOTE CONTROL, RIGHT CABLE
RCB	REINFORCED CONCRETE BOX
RCP	REINFORCED CONCRETE PIPE
RCR	ROUTE CHECK RELAY
RCV	RECEIVE, REMOTE CONTROL VALVE
RCVR, REC	RECEIVER
RD	ROAD, ROOF DRAIN, ROUND
RDC	RADIO DISTRIBUTION CABINET
RDMH	ROADWAY
SDP	RED ASPECT LAMP
RE	REINFORCEMENT BAR
REBAR	RECTIFIER, RECTANGULAR
RECT	REFERENCE
REF	REINFORCED, REINFORCING, REINFORCEMENT
REINF	RELOCATE
REL	REMOTE
REM	REQUIRED
REQ, REQD	REQUIRED
RES	RESISTOR
RESIL	RESILIENT
RET	RETURN
REV	REVISION, REVERSE
RF	RADIO FREQUENCY, RETURN FAN
RGB	RED, GREEN, BLUE VIDEO COLORS
RGS	RIGID GALVANIZED STEEL
RH	RADIANT HEATER, RIGHT HAND, RELATIVE

RIDS	HUMIDITY
RIL	RAILROAD INTRUSION DETECTION SYSTEM
RIM	RED INDICATION LIGHT
RIO	TOP OF XMH
RJ	REMOTE INPUT/OUTPUT
RL	AUDIO FREQ. TRACK INTERMEDIATE
RLA	TRACK RELAY
RLY	REFRIGERANT LIQUID
RM	RATED LOAD AMPS
RN	RELAY
RNS	ROOM
RO	REFERENCE NORTH
ROW	RUNNING RAIL NEGATIVE RETURN SWITCH
RP	ROUGH OPENING
RPM	RIGHT-OF-WAY
RPTR	REFERENCE POINT
RS	REVOLUTIONS PER MINUTE
RSC	REPEATER
RSP	RAILROADS
RSR	REFRIGERANT SUCTION, RIPARIAN
RST	SETBACK
RT	RIGID STEEL CONDUIT
RTAC	ROCK SLOPE PROTECTION
RTD	RESTRICTED SPEED RELAY
RTE	RESILIENT TILE
RTU	RIGHT, ROUTE, RANDOM TWIST
RV	ROOF TOP AIR CONDITIONING UNIT
RW	RESISTANCE TEMPERATURE DETECTOR
RWCR	ROUTE
RWE	REMOTE TERMINAL UNIT
RWL	ROOF VENTILATOR
RWLOL	RECYCLED WATER, RETAINING WALL
RWP/R	SWITCH REVERSE
RX, RCV (R)	CORRESPONDENCE RELAY
	ROADWAY EASEMENT
	RAIN WATER LEADER
	RETAINING WALL LAYOUT LINE
	REVERSE SWITCH REPEATER RELAY
	RECEIVE (R)

- S -

S	SOUTH, SLOPE
SO.	SOUTH
S.I.C.	SUPPORT IN PLACE
S1	SVRT MAIN LINE TRACK (SB)
S2	SVRT MAIN LINE TRACK (NB)
S3	SVRT POCKET OR STORAGE TRACK
Sa	SPECTRAL ACCELERATION
SA	SUPPLY AIR, SURGE ARRESTER
SAB	STATION AGENTS BOOTH
SAN	SANITARY
SAR	SOUND ATTENUATOR
SAT	SATURATION
SB	SOUTH BOUND
SBGR	STEEL BEAM GUARDRAIL
SBO	SINGLE BREAK OUTPUT
SC	SOLID CORE, POINT OF CHANGE FROM SPIRAL TO CIRCULAR CURVE
SCAC	SELF CONTAINED AIR CONDITIONER
SCADA	SUPERVISORY CONTROL AND DATA ACQUISITION
SCD	SEAT COVER DISPENSER, SMOKE CONTROL DAMPER
SCS	SMOKE CONTROL SENSOR
SCH	SCHEDULE
SCHP	SELF CONTAINED HEAT PUMP
SCN	SYSTEMWIDE CABLE NETWORK
SCTB	SHORT CIRCUITING TERMINATION BLOCK
SD	SOAP DISPENSER, STORM DRAIN, TUNNEL ISOLATION DAMPER, SUBWAY DAMPER
SDCB	STORM DRAIN CATCH BASIN OR DRAINAGE INLET
SDE	STORM DRAIN EASEMENT
SDMH	STORM DRAIN MANHOLE
SDP	SPLITTER DAMPER, SMOKE/FIRE DAMPER WITH ACCESS PANEL
SE	SOUTHEAST
SEC	SECOND, SECONDARY
SECT	SECTION, SECTIONALIZING
SE'LY	SOUTHEASTERLY
SES	SECTIONALIZING STATION
SF	SQUARE FEET, SUPPLY FAN
SG	SUBGRADE, SUPPLY GRILLE
SH	SHIELD, SHUNT
SHG	SHOWER GANG
SHH	SHOWER HANDICAP
SHC	SENSIBLE HEATING CAPACITY
SHL	SHOULDER
SHR	SHOWER
SHT	SHEET
SIG	SIGNAL
SIM	SIMILAR

SJW TEST	SAN JOSE WATER CO TEST STATION
SL	STREET LIGHT
SLC	LEFT CIRCUIT (34.5KV TPSS)
SLPA	SIGNAGE/LIGHTING/PUBLIC ADDRESS SPEAKERS
SLR	SEALER
SLV	SHORT LEG VERTICAL
S'LY	SOUTHERLY
SM	SINGLE MODE (FIBER CABLE), SOLID MANGANESE FROG, SWITCH MACHINE
SMF	SINGLE MODE FIBER
SMH	SANITARY MANHOLE
SND	SANITARY NAPKIN DISPENSER
SNF	SWING NOSE FROG, MOVABLE POINT FROG
SNR	SANITARY NAPKIN RECEPTACLE
SNT	STATION NETWORK TERMINAL
SOE	SUPPORT OF EXCAVATION
SOL	SOLENOID
SOM	SOMASTIC COATED PIPE
SONET	SYNCHRONOUS OPTICAL NETWORK
SORS	SEQUENTIAL OCCUPANCY RELEASE SYSTEM
SOV	SHUT-OFF VALVE
SP	STEEL PIPE, SUMP PUMP, STATIC PRESSURE, SPARE, SPLICE
SP1, SP2	BART SPUR TRACK
SPA	SPACES, SPACING
SPD	SANITARY PRESSURE DISCHARGE
SPDT	SINGLE POLE DOUBLE THROW
SPEC	SPECIFICATION
SPECS	SPECIFICATIONS
SPK	SPEAKER
SPO	POINT OF ORIGIN OF COMPOUND SPIRAL
SPRK	SPRINKLER
SPRR COMM	SOUTHERN PACIFIC RAILROAD COMMUNICATION
SPSC	SWITCH POWER SUPPLY CABINET, SWITCH MACHINE POWER SUPPLY CABINET
SPST	SINGLE POLE SINGLE THROW
SPT	SPRINT COMMUNICATIONS
SPTC	SOLDIER PILE TREMIE CONCRETE
SPWG	STATIC PRESSURE WATER GAUGE
SQ	SQUARE
SQ.FT.	SQUARE FOOT (FEET)
SQYD,SY	SQUARE YARD
SR	SUPPLY REGISTER
SRC	RIGHT CIRCUIT (34.5KV TPSS)
SS	SELECTOR SWITCH, STAINLESS STEEL, SANITARY SEWER, SUBSTATION, POINT OF CHANGE FROM ONE SPIRAL TO ANOTHER
SSCO	SANITARY SEWER CLEANOUT
SSE	SUBSURFACE EASEMENT, SANITARY SEWER EASEMENT
SSK	SERVICE SINK
SSMH, SMH	SANITARY SEWER MANHOLE
SSR	SOUTH STICK RELAY
SSS	SYSTEM SELECTOR SWITCH
SST	SOAP STONE
ST	STREET, SAINT, POINT OF CHANGE FROM SPIRAL TO TANGENT, STONE TILE ALIGNMENT STATION, STATION, STATIONING
STA	STANDBY
STBY	STANDBY
STC	SOUND TRANSMISSION CLASS
STD	STANDARD
STE	SPECIAL TEST EQUIPMENT
STIFF	STIFFENER
STL	STEEL
STOPR	STOP SPEED COMMAND RELAY
STOR	STORAGE
STR	STAIR, STRANDED
STRUC	STRUCTURAL, STRUCTURE
STS	SYNCHRONOUS TRANSPORT SIGNAL
SUB	SUBSTATION
SUPP	SUPPLY
SUSP	SUSPENDED
SV	TUNNEL VENTILATION FAN, SOLID VEE FROG, SHEET VINYL
SVL	SERVICE
SVR	SERVER
SW	SIDEWALK, SOUNDWALL, SOUTHWEST, SWITCH
SWAC POR	SWITCH MACHINE POWER OFF
SWBD	SWITCH BOARD
SWGR	SWITCH GEAR
SWL	SOUNDWALL
SW'LY	SOUTHWESTERLY
SWR	SYSTEMWIDE RACEWAY
SWS	SWITCHING STATION
SWT PT	SWITCH POINT

SY	SQUARE YARD
SYM	SYMMETRICAL
SYS	SYSTEM(S)

Santa Clara Valley Transportation Authority

X NO EXCEPTION TAKEN

MAKE CORRECTIONS NOTED

AMEND AND RESUBMIT

Any action shown above is subject to the terms of the contract and does not relieve the contractor of any of its obligations under the contract including design and detailing.

Contract No.: DB11002F

By: *[Signature]* Date: 03/29/2013

REV	DATE	BY	SUB	APP	DESCRIPTION
1	20130117				READY FOR CONSTRUCTION
0	20121019				READY FOR CONSTRUCTION

DESIGNED BY
J. STREEPER

DRAWN BY
K. MULLER

CHECKED BY
B. WAGNER

IN CHARGE
J. STREEPER

DATE
20130117

Skanska Shimmick Herzog

1436 California Circle
Milpitas, California 95035
A Joint Venture

HMM

SUBMITTED *[Signature]*

LAN Leachwood, Andrews & Newman, Inc.
A Joint Venture

T-Y-LIN INTERNATIONAL
APPROVED *[Signature]*

BART SILICON VALLEY

BART SILICON VALLEY BERRYESSA EXTENSION

LINE, TRACK, STATIONS, AND SYSTEMS

GENERAL ABBREVIATIONS
SHEET 3 OF 4

CADD FILENAME	C700-S-LM-X232.dwg
SIZE	SCALE NONE
CONTRACT NO.	C700
REV.	1
AREA CODE	LM
SHEET NO.	X232
PAGE NO.	0005

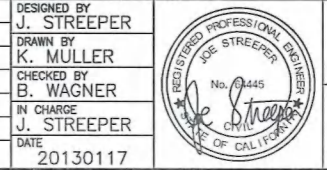
- T -		TIM	TENANT IMPROVEMENT, TRAIN INFORMATION MONITOR	VAR	VOLT-AMPERE REACTIVE, VARIES	- X -	
t	THICKNESS	TL	TREE LIGHTING	VAV	VARIABLE AIR VOLUME, VARIABLE AIR DAMPER	X	
T	TELEPHONE, COMMUNICATION LINE, TOP, TRANSFORMER, TREAD, TIP, TRANSDUCER, THERMOSTAT TOP & BOTTOM	TLC	TRIP LOGIC CIRCUIT	VB	VACUUM BREAKER	X-OVER	CROSSOVER (TRACK)
T&B	TEMPERATURE AND PRESSURE RELIEF VALVE	TM	TERMINAL ZONE	VC	VERTICAL CURVE, VITRIFIED CLAY, VIDEO CARD	X/O	CROSSOVER
T&P	TEMPERATURE AND PRESSURE RELIEF VALVE	TMH	TELEPHONE MANHOLE	VCD	VITRIFIED CLAY DUCT	XCVR	TRANSCEIVER
T.O., T/O	TURNOUT	TN	TRUE NORTH	VCN	VERTICAL CIRCULATION NODE	XFMR	TRANSFORMER
T/	TOP OF	T.O.	TORQUE OIL REEL	VCP	VENTILATION CONTROL PANEL, VITRIFIED CLAY PIPE	XING	CROSSING
T/C, T.C.	TRAIN CONTROL	TOD	TOP OF CONCRETE	VCT	VINYL COMPOSITION TILE	XL	INTERLOCKING ZONE
T/P	TOP OF PAVEMENT, TOP OF PIPE	TOF	TRANSIT ORIENTED DEVELOPMENT	VCTB	VINYL COVERED TACK BOARD	XMT, XMIT	TRANSMIT
T/R	TOP OF RAIL	TOL	TOP OF FOOTING	VD	VOLUME DAMPER, VIBRATION DETECTOR	XMR	TRANSMITTER
T/W	TOP OF WALL	TOS	TOLERANCE	VDA	VIDEO DISTRIBUTION AMPLIFIER	XSR	DIRECTIONAL ROUTE LOCKING RELAY
T1	T1 TELEPHONE CARRIER	TOT	TOP OF STRUCTURE (STEEL, SLAB)	VE	VOLTS DIRECT CURRENT	XT	X-TERMINAL COMPUTER
TA	TRUNK AMPLIFIER	TOTW	TOTAL	VEL	MOTOR VIBRATION DETECTOR, VIBRATION ELEMENT		
TAH	TEMPERATURE ALARM HIGH	TP	TOP OF WALL	VENT	VELOCITY	- Y -	
TAN	TANGENT	TPD	TRACTION POWER, TWISTED PAIR, TRAP PRIMER, TEST PIT, TRANSMISSION PRESSURE	VERT	VENTILATION	Y	OVERLAP, YARD
TB	TERMINAL BOX, TERMINAL BLOCKS, TEST BORING	TPSS	TOILET PAPER DISPENSER	VEST	VERTICAL	Y&S	YARDS AND SHOPS
TBD	TO BE DETERMINED	TR	TRACTION POWER SUB STATION	VFD	VESTIBULE	YAH	TORQUE ALARM (HIGH)
TBDC	TO BE DETERMINED BY THE CONTRACTOR	TRACS	TRUNKED RADIO AND COMMUNICATIONS SYSTEMS	VHF	VOICE FREQUENCY	YCT	YARD CONTROL TOWER
TBL	TROUBLE	TRANS	TRANSFORMER, TRANSITION, TRANSVERSE	VI	VARIABLE FREQUENCY DRIVE	YE	YELLOW ASPECT LAMP
TBM	TUNNEL BORING MACHINE	TR-FO	TRUNKED RADIO FIBER OPTIC INTERFACE	VIB	VERY HIGH FREQUENCY	YL	INDICATOR LIGHT
TBP	TERMINATION BLOCK POST	TRK	TRACK	VIC	VIBRATION INDICATOR	YSH	TORQUE SWITCH (HIGH)
TBPC	TERMINATION BLOCK POST	TS	POINT OF CHANGE FROM TANGENT TO SPIRAL, TRAFFIC SIGNAL, TUBE SECTION, TUBE STEEL, TEST SWITCH	VIM	VIBRATION INDICATION HIGH	YT	YARD TRACK
TC	TIME CLOCK, TOP OF CURB, TRAIN CONTROL, TERMINAL CABINET, TEMPERATURE CONTROLLER	TSL	TRAFFIC SIGNAL	VMS	VOLTMETER		
TC/C	TRAIN CONTROL & COMMUNICATIONS	TSP	TOTAL STATIC PRESSURE	VMTF	VARIABLE MESSAGE SIGN, VISUAL MESSAGING SYSTEM	- Z -	
TCB	TRAIN CONTROL BUILDING	TT	TRANSFER TRIP	VOL	VIBRATION MITIGATION TRACK FORM VOLUME	Z	ZONE
TCC	TOTAL COOLING CAPACITY	TTC	TRANSFER TRIP CABINET	VOX	VOICE OPERATED TRANSMITTER	ZIC	POSITION INDICATOR CLOSED
TCE	TEMPORARY CONSTRUCTION EASEMENT	TV	TELEVISION, TURNING VANE	VPI	GENERAL RAILWAY SIGNAL'S VITAL PROCESSOR INTERLOCKING SYSTEM	ZIO	POSITION INDICATOR OPEN
TCH	TRAIN CONTROL HOUSE	TVE	TUNNEL VENTILATION EQUIPMENT	VR	SPEED CODE APPLICATION RELAY, VIDEO REPEATER	ZSC	POSITION SWITCH CLOSED
TCP	TEMPERATURE CONTROL PANEL, TRANSPORT CONTROL PROTOCOL	TVF	TUNNEL VENTILATION FAN	VRD	VITAL RELAY DRIVER, VPI VITAL RELAY DRIVER RELAY	ZSCA	POSITION SWITCH CLOSED ALARM
TCR	TRAIN CONTROL ROOM	TVM(S)	TICKET VENDING MACHINE(S)	VRD01R	FIRST REPEATER OF VRD	ZSO	POSITION SWITCH OPEN
TCS	TELEMETRY CABLE SPLICE	TVS	TUNNEL VENTILATION SHAFT	VS	VOLTMETER SWITCH		
TCSA	TEMPORARY CONSTRUCTION STAGING AREA	TW	TRAVELED WAY	VSC	VITAL SERIAL CONTROLLER		
TCT	TRACK CIRCUIT TUNING	TWA	TRANSPARENT WALL ASSEMBLY	VT	VOLTMETER TRANSDUCER, VOLTAGE TRANSFORMER		
TD	TRENCH DRAIN, TUNNEL DAMPER, TIRE DERIVED AGGREGATE	TWC	TRAIN-TO-WAYSIDE COMMUNICATIONS	VTR	VENT THRU ROOF		
TDA	TIRE DERIVED AGGREGATE	TWPR	TWISTED PAIR	VZ	VENT ZONE		
TDC	TIME DELAY CLOSE	TWR	TOWER				
TDCR	TUNNEL DAMPER CLOSE RELAY	TX, XMT	TRANSMIT				
TDD	TELECOMMUNICATIONS DEVICE FOR THE DEAF	TYP	TYPICAL				
TDDO	TIME DELAY DROPOUT						
TDF	TIME DELAY DE-ENERGIZING RELAY	- U -					
TDO	TIME DELAY OPEN	<U>	UPGRADE				
TDOR	TUNNEL DAMPER OPEN RELAY	U	UNBALANCED SUPERELEVATION (IN INCHES), TURN-BACK				
TDP	TIME DELAY PICK UP	U/L	UP LINK				
TDR	TIME DELAY DE-ENERGIZING RELAY	UA	COMMON ALARM				
TE	TEMPERATURE ELEMENT, THREADED END	UB	UTILITY BOX				
TEB	MOTOR BEARING TEMPERATURE (RTD'S)	UBC	UNIFORM BUILDING CODE				
TEH	TEMPERATURE ELEMENT MOTOR ENCLOSURE SPACE HEATER	UC	UNDERCUT, UNDERCROSSING				
TEL	BURIED TEL, TELEPHONE	UCD	UNDER CAR DELUGE				
TELCO	TELEPHONE COMPANY	UD	UNDERDRAIN				
TELECOM	TELECOMMUNICATIONS	UDF	UNITED DEFENSE				
TELVLT	TELEPHONE VAULT	UE	UTILITY EASEMENT				
TEMP	TEMPERATURE, TEMPORARY	UG	UNDERGROUND				
TER	TIMER RELAY, TERRATZO	UH	UNIT HEATER				
TEW	MOTOR WINDING TEMPERATURE (RTD'S)	UHF	ULTRA HIGH FREQUENCY				
TF	TRACK FEET, TRANSFER (ATO TO MANUAL OR MANUAL TO ATO), FORWARD CURRENT CONDUCTION	UHH	UNIT HEATER HYDRONIC				
TFD	TUNNEL VENTILATION FAN DAMPER	UMC	UNIFORM MECHANICAL CODE				
TFE	TETRAFLUOROETHYLENE	UNF	UNFINISHED				
TG	TOP OF GRATE (ELEVATION), TRANSFER GRILLE	UNK	UNKNOWN				
TH	TEST HOLE (SUBSURFACE INVESTIGATION)	UNO	UNLESS NOTED OTHERWISE				
THH	TELEPHONE HAND HOLE	UP	UPWARD, UTILITY POLE				
THK	THICK, THICKNESS	UPC	UNIFORM PLUMBING CODE				
THR	TOTAL HEAT REJECTION	UPRR-OHE	OVERHEAD SIGNAL/COMM LINE UNINTERRUPTIBLE POWER SUPPLY				
THRU	THROUGH	UR	URNAL				
TI	TEMPERATURE INDICATION	URH	URNAL HANDICAP				
TICHL	TEMPERATURE INDICATION CONTROL (HIGH/LOW)	US	TURN-BACK. THE ROUTE INTO THE TM ZONE, WHEN TURN-BACK, IS ALIGNED, UNITED STATES, COMMON TROUBLE				
TIEE	TEMPORARY INGRESS/EGRESS EASEMENT	UT	ULTRASONIC TESTING				
TIH	TEMPERATURE INDICATION HIGH FOR MOTOR ENCLOSURE OR BEARINGS	UTC	UNSHIELDED TWISTED PAIR				
		UTIL	UTILITY				
		UTP	UNSHIELDED TWISTED PAIR CABLE				
		UV	ULTRA VIOLET, UNDERVOLTAGE				
		UWP	UPPER WORKING POINT				
		- V -					
		V	VENT, VOLTS, DESIGN VELOCITY (MPH)				
		VA	VOLT AMPERES				
		VAC	VOLTS ALTERNATING CURRENT, VACUUM				

ADDITIONAL HORIZONTAL AND VERTICAL ALIGNMENT NOMENCLATURE	
k ₁	TANGENT DISTANCE OF SHIFTED PC REFERRED TO THE TS
k ₂	TANGENT DISTANCE OF SHIFTED PT REFERRED TO THE ST
Lc	TOTAL LENGTH OF CIRCULAR CURVE FROM PC TO PT OR SC TO CS
Lsc	LENGTH OF COMPOUND SPIRAL FROM CS TO SC
Ls ₁	LENGTH OF SPIRAL FROM TS TO SC
Ls ₂	LENGTH OF SPIRAL FROM CS TO ST
pc	OFFSET BETWEEN CIRCLES AT POINT OF COMPOUND CURVATURE
P ₁	OFFSET FROM INITIAL TANGENT TO PC OF THE SHIFTED CIRCLE OF SPIRALIZED CURVE
P ₂	OFFSET FROM INITIAL TANGENT TO PT OF THE SHIFTED CIRCLE OF SPIRALIZED CURVE
Rc	RADIUS OF CIRCULAR CURVE
Ts ₁	TANGENT DISTANCE FROM TS TO PI
Ts ₂	TANGENT DISTANCE FROM ST TO PI
TS	POINT OF CHANGE FROM TANGENT TO SPIRAL
Xs ₁	TANGENT DISTANCE AT THE SC
Xs ₂	TANGENT DISTANCE AT THE CS
Ys ₁	TANGENT OFFSET AT THE SC
Ys ₂	TANGENT OFFSET AT THE CS
Δ	TOTAL CENTRAL ANGLE OF THE SPIRALIZED CURVE
Δc	CENTRAL ANGLE OF CIRCULAR CURVE (Lc) FROM SC TO CS
Δc ₁	CENTRAL ANGLE OF FIRST CIRCULAR CURVE OF COMPOUND CURVATURE
Δc ₂	CENTRAL ANGLE OF SECOND CIRCULAR CURVE OF COMPOUND CURVATURE
∅s ₁	CENTRAL ANGLE OF SPIRAL LENGTH Ls ₁ OR SPIRAL ANGLE OF FIRST SPIRAL IN SPIRALIZED CURVE
∅s ₂	CENTRAL ANGLE OF SPIRAL LENGTH Ls ₂ OR SPIRAL ANGLE OF SECOND SPIRAL IN SPIRALIZED CURVE
∅s ₃	CENTRAL ANGLE OF COMPOUND SPIRAL OR COMPOUND SPIRAL ANGLE FROM CS TO SC
#10	TRACK TURNOUT DESIGNATION
#15 EQ	EQUALATERAL TURNOUT

Santa Clara Valley Transportation Authority
 NO EXCEPTION TAKEN
 MAKE CORRECTIONS NOTED
 AMEND AND RESUBMIT
 Any action shown above is subject to the terms of the contract and does not relieve the contractor of any of its obligations under the contract including design and detailing.
 Contract No: DBN 002F
 By: [Signature] Date: 03/29/2013

Jan 16, 2013 5:43pm C:\projects\scvwd\copy of mba-template (28)\dms57815\7700-S-LM-X233.dwg
 kmuller

DESIGNED BY	J. STREEPER
DRAWN BY	K. MULLER
CHECKED BY	B. WAGNER
IN CHARGE	J. STREEPER
DATE	20130117



Skanska Shimmick Herzog
 1436 California Circle
 Milpitas, California 95035
 A Joint Venture
HMM
 LOCKWOOD, ANDREWS & NEWNAM, INC.
 T-Y-LIN INTERNATIONAL
 APPROVED [Signature]

BART SILICON VALLEY
 BART SILICON VALLEY BERRYESSA EXTENSION

LINE, TRACK, STATIONS, AND SYSTEMS
 GENERAL ABBREVIATIONS
 SHEET 4 OF 4

CADD FILENAME	C700-S-LM-X233.dwg
SIZE	NONE
CONTRACT NO.	C700
REV.	1
AREA CODE	LM
SHEET NO.	X233
PAGE NO.	0006

OWNER / OPERATOR	
ACFC & WCD	ALAMEDA COUNTY FLOOD CONTROL & WATER CONSERVATION DISTRICT
ACWD	ALAMEDA COUNTY WATER DISTRICT
AREMA	AMERICAN RAILWAY ENGINEERING MAINTENANCE-OF-WAY ASSOCIATION
AIR	AIR PRODUCTS
AT&T	AT&T
BART	BAY AREA RAPID TRANSIT
CHEV	CHEVRON
CMC	COMCAST
COF	CITY OF FREMONT
COM	CITY OF MILPITAS
CSC	CITY OF SANTA CLARA
CSJ	CITY OF SAN JOSE
CSJ-FO	CITY OF SAN JOSE SMART FIBER
ICG	ICG COMMUNICATIONS, INC.
KIND	KINDER MORGAN, INC.
LEVEL 3 / L3	LEVEL (3) COMMUNICATIONS
MCI	MCI, INC.
MCWD / MSD	MILPITAS CITY WATER DISTRICT / MILPITAS SANITARY DISTRICT - (CITY OF MILPITAS)
MFN	METROMEDIA FIBER NETWORK, INC.
MFS	MFS WORLDCOM
OWT	ONE WORLD TELECOMMUNICATIONS
PG&E	PACIFIC GAS & ELECTRIC
QWEST	QWEST COMMUNICATIONS INC.
SBC	SBC COMMUNICATIONS, INC.
SCC	SANTA CLARA COUNTY
SCSD	SANTA CLARA SEWER DISTRICT
SCVTA / VTA	SANTA CLARA VALLEY TRANSPORTATION AUTHORITY
SVRT	SILICON VALLEY RAPID TRANSIT
SCVWD	SANTA CLARA VALLEY WATER DISTRICT
SFWD	SAN FRANCISCO WATER DEPARTMENT
SJWC	SAN JOSE WATER COMPANY
SPRINT / SPR	SPRINT
SVP	SILICON VALLEY POWER
USD	UNION SANITARY DISTRICT
UPRR	UNION PACIFIC RAILROAD
XO	XO COMMUNICATIONS

ABBREVIATIONS	
ABN	ABANDON
BFS	BART FACILITY STANDARDS
CIR	CIRCLE
DBC	DIRECT BURIED CABLE
DFM	DISTRIBUTION FEEDER MAIN
FT	FEET
EX	EXISTING
FL	FLOW LINE
FM	FORCE MAIN
FND	FOUND
HP	HIGH PRESSURE
JT	JOINT TRENCH
LF	LINEAR FEET
MULT	MULTIPLE
NIC	NOT IN CONTRACT
NO / NOS	NUMBER / NUMBERS
PL	PIPE LINE
PROP	PROPOSED
RCP	REINFORCED CONCRETE PIPE
RR	RAILROAD
SDMH	STORM DRAIN MANHOLE
SSMH	SANITARY SEWER MANHOLE
TMH	TELEPHONE MANHOLE
TP	TRANSMISSION PRESSURE
TRANS	TRANSFORMER/TRANSITION
TBD	TO BE DETERMINED
UNK	UNKNOWN
UTIL	UTILITY
WBO	WORK BY OTHERS

UTILITY SYMBOLS		
EXISTING	PROPOSED	
		STORM DRAIN INLET
		ELECTRICAL BOX / VAULT
		ELECTRICAL MANHOLE
		FIRE HYDRANT
		MCI TEST POINT
		MONITORING WELL
		NATURAL GAS VALVE
		RAILROAD CONTROL BOX
		SANITARY SEWER MANHOLE
		SANITARY SEWER CLEANOUT
		STORM DRAIN MANHOLE
		SOLAR PANEL POLE
		TELEPHONE MANHOLE
		TELEPHONE JUNCTION BOX
		UTILITY MARKER
		UPRR SIGNAL BOX
		WATER METER
		WATER VALVE
		ABANDONED UTILITY
		REMOVED UTILITY
		POTHOLE LOCATION
		UTILITY POLE
		UTILITY CAP
		POLE ANCHOR
		AIR RELEASE VALVE INSIDE PRECAST VAULT
		TELEMETRY CABLE SPLICE INSIDE PRECAST VAULT
		CORROSION CONTROL TEST STATION

- NOTES:**
- CONTRACTOR SHALL CONTACT UNDERGROUND SERVICE ALERT (USA) TO FIELD VERIFY TYPE AND LOCATION OF UTILITIES BEFORE BEGINNING CONSTRUCTION AND FABRICATING MATERIALS FOR USE IN EXCAVATED AREAS.
 - ALL EXISTING UTILITIES, WHETHER OR NOT SHOWN ON THE DRAWINGS, SHALL BE PROTECTED AT ALL TIMES UNLESS NOTED OTHERWISE.
 - THE PROPOSED PRIVATE UTILITY RELOCATIONS ARE FOR INFORMATION ONLY AND ARE NOT PART OF THIS CONTRACT. THE PRIVATE UTILITY OWNER WILL PERFORM THEIR FINAL DESIGN AND RELOCATIONS.
 - THE PROPOSED RELOCATED UTILITIES, AS SHOWN ON THESE UTILITY DRAWINGS, ARE SCHEMATIC IN NATURE.
 - FOR RIGHT-OF-WAY BOUNDARIES AND UTILITY EASEMENTS REFER TO RIGHT-OF-WAY DRAWINGS.
 - PRIOR TO TRENCHING OVER OR DIRECTLY ADJACENT TO ANY SCVWD PIPELINE, CONTRACTOR MUST POTHOLE TO VERIFY THE SCVWD PIPELINE. TRENCHING WITHIN 1 FOOT OF COVER OVER THE SCVWD PIPELINE SHALL BE BY HAND METHOD ONLY.
 - HORIZONTAL DATA (COORDINATES AND STATIONING) ON THE PIPELINE ARE TO THE CENTERLINE OF THE PIPE.

UTILITY MATERIAL	
ABS	ACRYLONITRILE--BUTADIENE--STYRENE
AC, ACP	ASBESTOS CEMENT PIPE
ACWP	ASBESTOS CEMENT WATER PIPE
CD	CONCRETE DUCT
CIP	CAST IRON PIPE
CPC	CONCRETE PIPE
CMP	CORRUGATED METAL PIPE
CSP	CORRUGATED STEEL PIPE
DICL	DUCTILE IRON CEMENT LINED
DIP	DUCTILE IRON PIPE
HDPE	HIGH DENSITY POLYETHYLENE
IP	IRON PIPE
PE	POLYETHYLENE PIPE
PLA / PL	PLASTIC
PVC	POLYVINYL CHLORIDE
RBC	REINFORCED BOX CULVERT
RCP	REINFORCED CONCRETE PIPE
SOM	SOMATIC COATED PIPE
STL	STEEL
VCD	VITRIFIED CLAY DUCT
VCP	VITRIFIED CLAY PIPE

UTILITY LEGEND		PROPOSED UTILITIES LEGEND	
EXISTING	PROPOSED	LD-G-1	UTILITY CODE
		CATV	CATV LINE
		E	BURIED ELECTRICAL LINE
		FO	BURIED FIBER OPTIC LINE
		G	GAS LINE
		JT	JOINT TRENCH LINE
		NIT	NITROGEN LINE
		OHE	OVERHEAD ELECTRICAL LINE
		PT	PETROLEUM LINE
		RS	RIPARIAN SETBACK
		SS	SANITARY SEWER LINE
		SD	STORM DRAIN LINE
		SL	STREET LIGHT LINE
		T	BURIED TELEPHONE LINE
		W	WATER LINE

Santa Clara Valley Transportation Authority
X NO EXCEPTION TAKEN
MAKE CORRECTIONS NOTED
AMEND AND RESUBMIT
 Any action shown above is subject to the terms of the contract and does not relieve the contractor of any of its obligations under the contract including design and detailing.
 Contract No.: DB11002F
 By: *[Signature]* Date: 03/29/2013

Jan 16, 2013 5:47pm C:\projects\scvwd\42in RFC Rev1\Drawings\DU-012.dwg

REV	DATE	BY	SUB	APP	DESCRIPTION
1	20130117				READY FOR CONSTRUCTION
0	20121019				READY FOR CONSTRUCTION

DESIGNED BY
J. CACCIOTTI
 DRAWN BY
K. MULLER
 CHECKED BY
B. WAGNER
 IN CHARGE
J. STREEPER
 DATE
 20130117

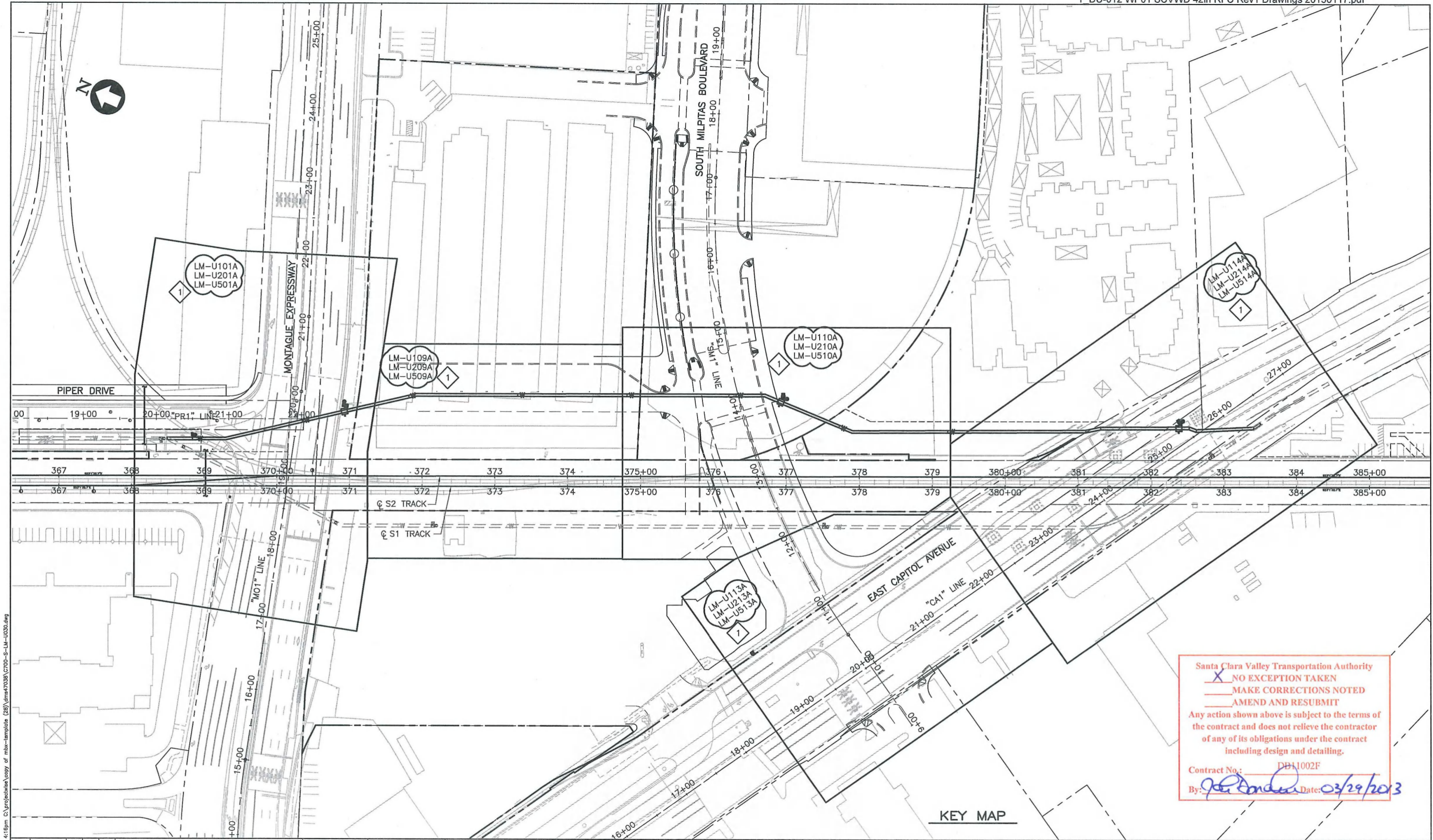
Skanska Shimmick Herzog
 1436 California Circle
 Milpitas, California 95035
 A Joint Venture

Lockwood, Andrews & Newnam, Inc.
 T-Y-LIN INTERNATIONAL
 APPROVED *[Signature]*

BART SILICON VALLEY
 BART SILICON VALLEY BERRYESSA EXTENSION

LINE, TRACK, STATIONS AND SYSTEMS
 SUPPLEMENTAL UTILITY NOTES, ABBREVIATIONS AND SYMBOLS

CADD FILENAME	C700-S-LM-U001.dwg
SIZE	D
SCALE	NTS
CONTRACT NO.	C700
SHEET NO.	U001A
PAGE NO.	0007
REV.	1



Santa Clara Valley Transportation Authority
 NO EXCEPTION TAKEN
 MAKE CORRECTIONS NOTED
 AMEND AND RESUBMIT
 Any action shown above is subject to the terms of the contract and does not relieve the contractor of any of its obligations under the contract including design and detailing.
 Contract No.: DB11002F
 By: *[Signature]* Date: 03/29/2013

KEY MAP

REV	DATE	BY	SUB	APP	DESCRIPTION
1	20130117				READY FOR CONSTRUCTION
0	20121019				READY FOR CONSTRUCTION

DESIGNED BY
K. MULLER
 DRAWN BY
K. MULLER
 CHECKED BY
B. WAGNER
 IN CHARGE
J. STREEPER
 DATE
20130117



Skanska
Shimmick
Herzog
 1436 California Circle
Milpitas, California 95035
A Joint Venture

LMN Leckwood, Andrews & Newman, Inc. T-Y-LIN INTERNATIONAL
 APPROVED *[Signature]*



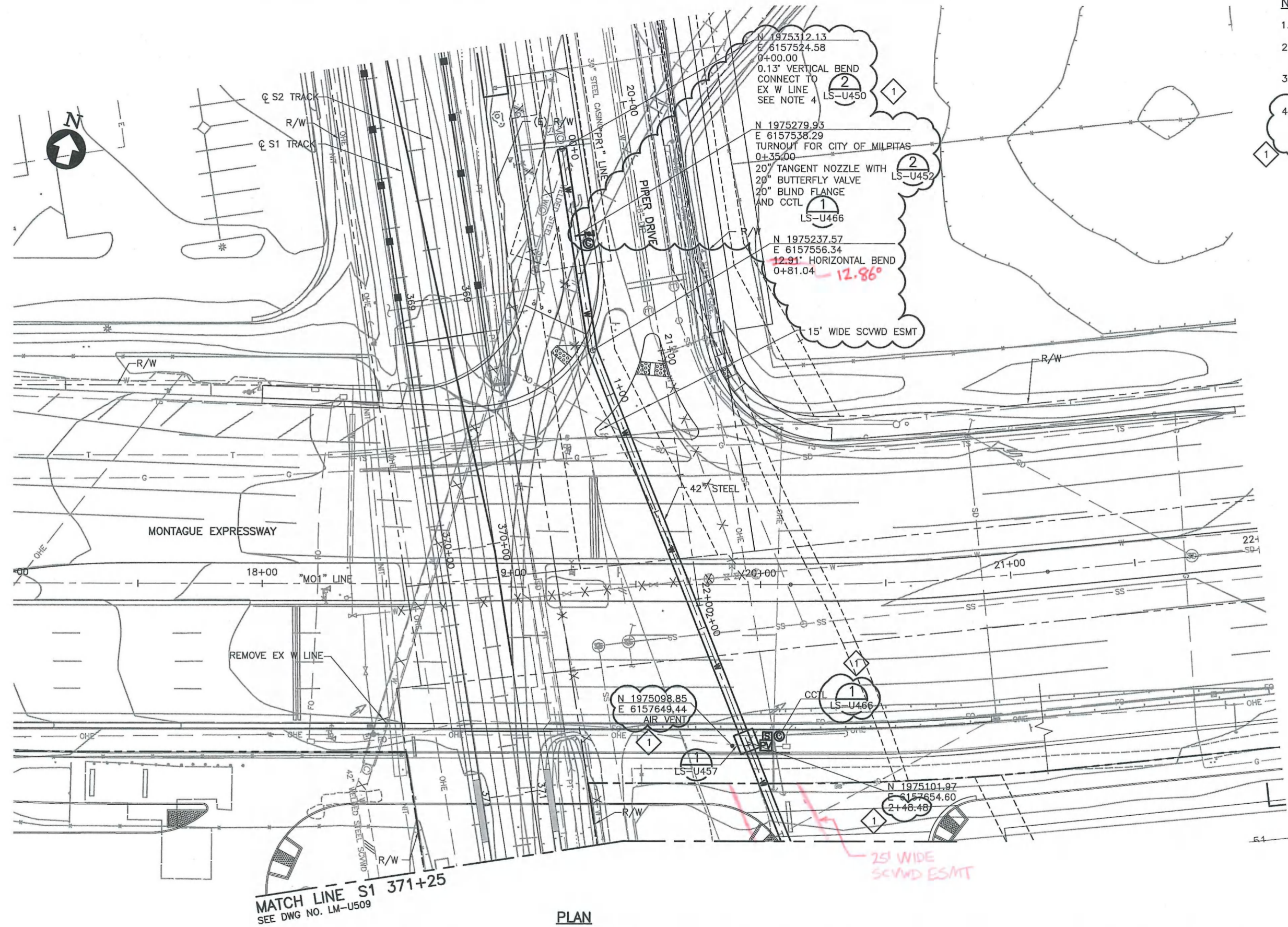
LINE, TRACK, STATIONS AND SYSTEMS
 MONTAGUE EXPRESSWAY, SOUTH MILPITAS
 BOULEVARD, EAST CAPITOL AVENUE, PIPER DRIVE
 DRAWING LAYOUT INDEX

CADD FILENAME C700-S-LM-U030.dwg	CONTRACT NO. C700	REV. 1
SIZE D	SCALE 1"=60'	
AREA CODE LM	SHEET NO. U030	PAGE NO. 0008

Jan 16, 2013 4:16pm C:\projects\scv\template (28)\ems47038\C700-S-LM-U030.dwg
 k Muller

NOTES:

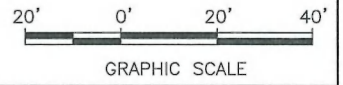
1. FOR NOTES AND LEGEND, SEE DRAWING LM-U001A.
2. STATION/OFFSET REFERS TO THE "W42" LINE UNLESS OTHERWISE NOTED.
3. SEE DRAWING LM-U401 IN MONTAGUE CAPITOL WORK PACKAGE FOR COM WATER RELOCATIONS.
4. CONNECT NEW 2" TELEMETRY CONDUIT TO EXISTING 2" CONDUIT. REMOVE EXISTING TELEMETRY CABLE AND PULL NEW TELEMETRY CABLE FROM EXISTING SPLICE BOX, APPROX 9' TO THE NORTH.



Santa Clara Valley Transportation Authority
 NO EXCEPTION TAKEN
 X MAKE CORRECTIONS NOTED
 AMEND AND RESUBMIT
 Any action shown above is subject to the terms of the contract and does not relieve the contractor of any of its obligations under the contract including design and detailing.
 Contract No.: DB11002F
 By: *J. D. D...* Date: 03/29/2013

MATCH LINE S1 371+25
SEE DWG NO. LM-U509

PLAN



REV	DATE	BY	SUB	APP	DESCRIPTION
1	20130117				READY FOR CONSTRUCTION
0	20121019				READY FOR CONSTRUCTION

DESIGNED BY
J. STREEPER
DRAWN BY
K. MULLER
CHECKED BY
B. WAGNER
IN CHARGE
J. STREEPER
DATE
20130117



Skanska Shimmick Herzog
1436 California Circle
Milpitas, California 95035
A Joint Venture

HMM
SUBMITTED *[Signature]*

LAN Lockwood, Andrews & Newnam, Inc.
T-Y-LIN INTERNATIONAL
APPROVED *[Signature]*



LINE, TRACK, STATIONS AND SYSTEMS

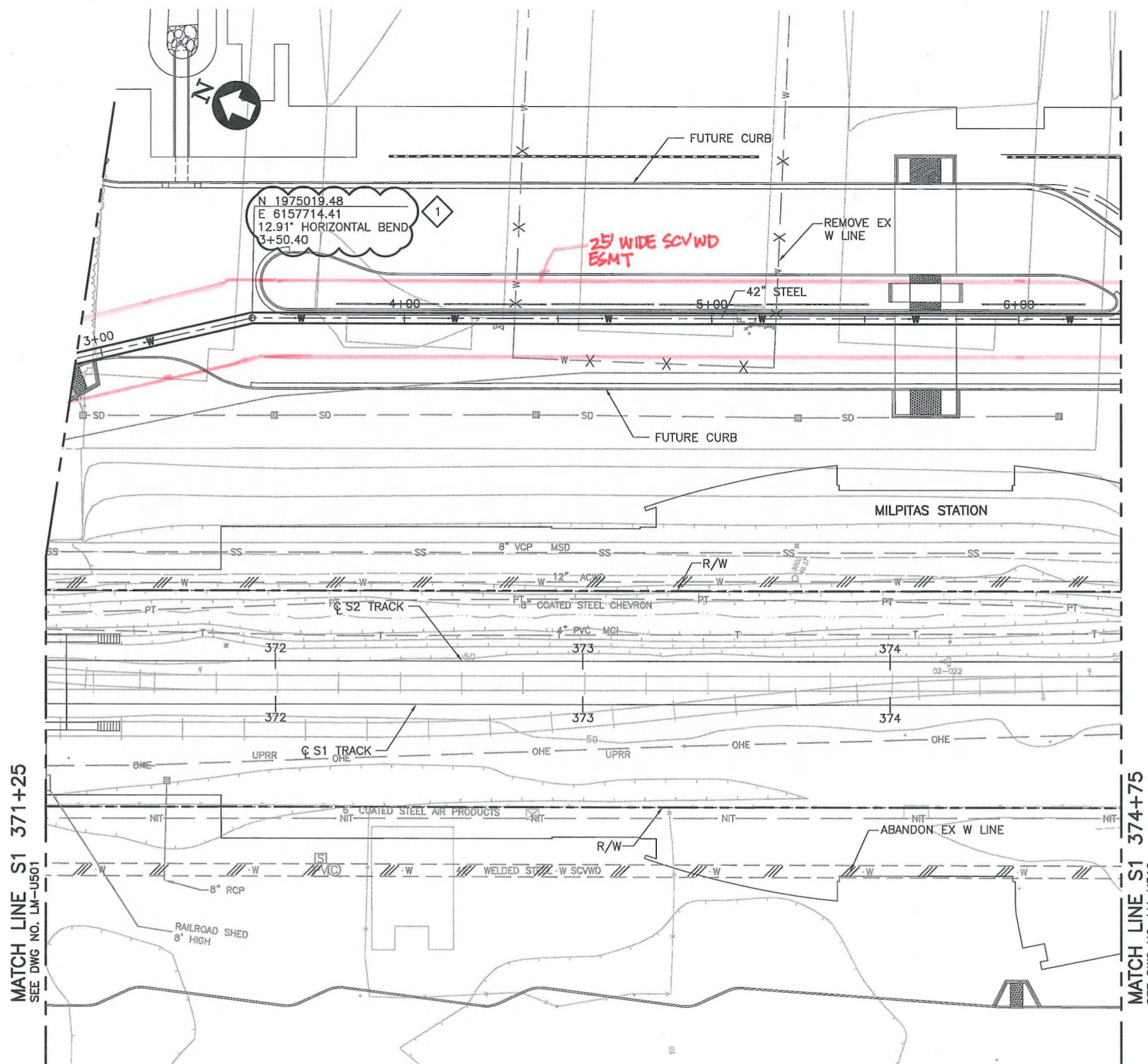
MONTAGUE EXPRESSWAY
UTILITY RELOCATION PLAN (42" WATER)
PR2 19+70 TO S1 371+25

CADD FILENAME C700-S-LM-U501.dwg	REV. 1
SIZE SCALE D 1"=20'	
CONTRACT NO. C700	PAGE NO. 0022
AREA CODE LM	SHEET NO. U501

Jan 16, 2013 4:52pm C:\projects\wae\copy of mxb-template (28)\dms47038\700-S-LM-U501.dwg

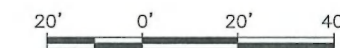
NOTES:

- FOR NOTES AND LEGEND, SEE DRAWING LM-U001A.
- STATION/OFFSET REFERS TO THE "W42" LINE UNLESS OTHERWISE NOTED.
- SEE DRAWING LM-U409 IN MONTAGUE CAPITOL WORK PACKAGE FOR COM WATER RELOCATIONS.



PLAN

Santa Clara Valley Transportation Authority
 NO EXCEPTION TAKEN
 MAKE CORRECTIONS NOTED
 AMEND AND RESUBMIT
 Any action shown above is subject to the terms of the contract and does not relieve the contractor of any of its obligations under the contract including design and detailing.
 Contract No.: DB11002F
 By: *[Signature]* Date: 03/19/2013



GRAPHIC SCALE

Jan 17, 2013 11:23am c:\projects\scvwd\du-012\wp01\scvwd_42in_rfc_rev1.dwg

REV	DATE	BY	SUB	APP	DESCRIPTION
1	20130117				READY FOR CONSTRUCTION
0	20121019				READY FOR CONSTRUCTION

DESIGNED BY
J. STREEPER

DRAWN BY
K. MULLER

CHECKED BY
B. WAGNER

IN CHARGE
J. STREEPER

DATE
20130117

Skanska
Shimmick
Herzog

1438 California Circle
Milpitas, California 95035
A Joint Venture

HMM

LOCKWOOD, ANDREWS
& NEWSON, INC.

T-Y-LIN INTERNATIONAL

APPROVED *[Signature]*

BART
SILICON VALLEY

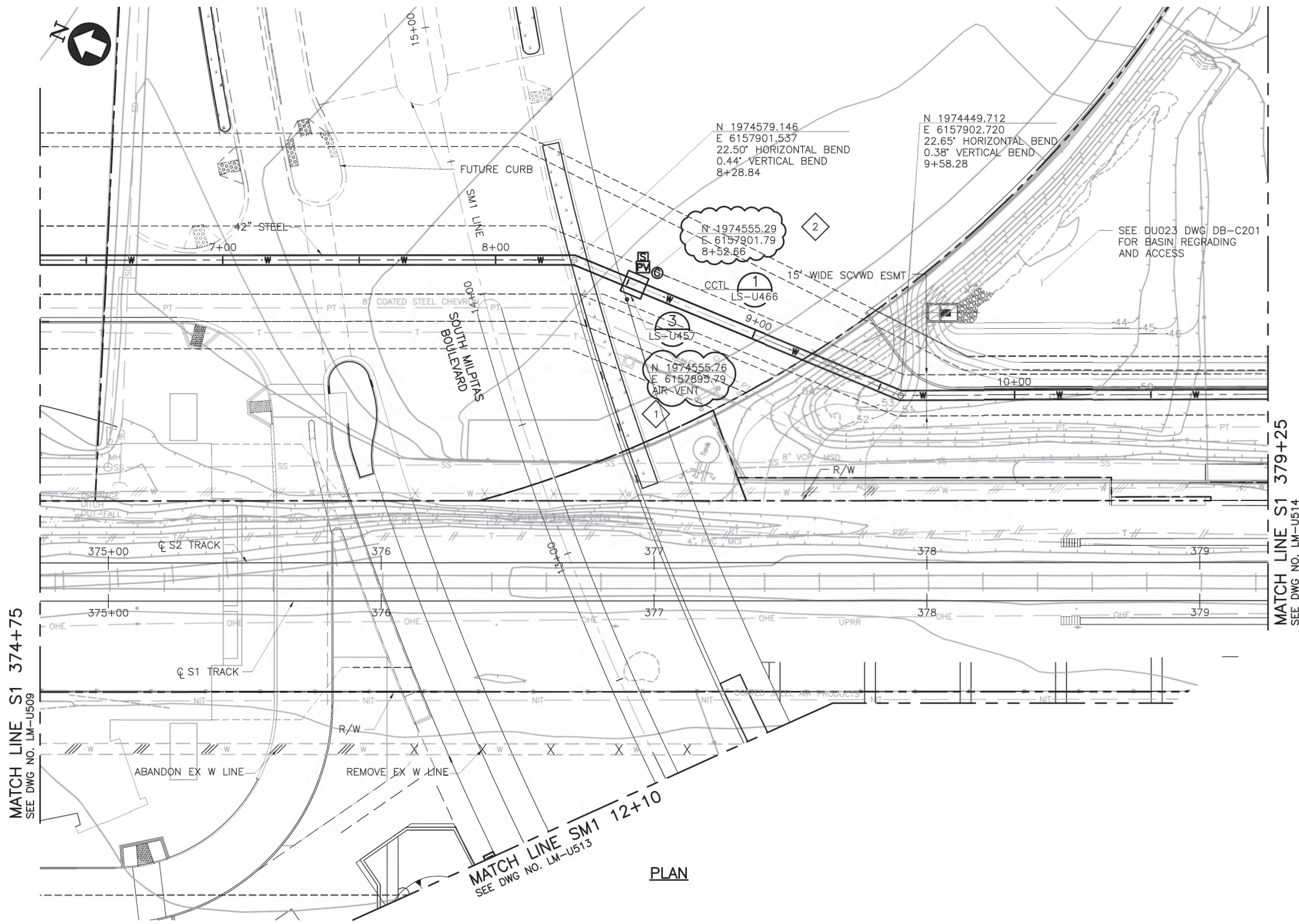
BART SILICON VALLEY BERRYESSA EXTENSION

LINE, TRACK, STATIONS AND SYSTEMS

SOUTH MILPITAS BOULEVARD
UTILITY RELOCATION PLAN (42" WATER)
S1 371+25 TO S1 374+75

CADD FILENAME C700-S-LM-U509.dwg	REV. 1
SIZE SCALE D 1"=20'	
CONTRACT NO. C700	PAGE NO. 0023
AREA CODE LM	SHEET NO. U509

- NOTES:**
- FOR NOTES AND LEGEND, SEE DRAWING LM-U001A.
 - STATION/OFFSET REFERS TO THE "W42" LINE UNLESS OTHERWISE NOTED.
 - SEE DRAWING LM-U410 IN MONTAGUE CAPITOL WORK PACKAGE FOR COM WATER RELOCATIONS.



Note: Drawing approved for 42" pipeline only. Final grading at The Crossing's basin pending review & approval in DU023. Do not fill above existing grade until final grading is approved. Final Design drawings to reflect approved final grades.

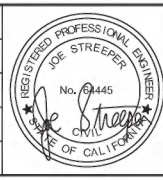
Santa Clara Valley Transportation Authority
 NO EXCEPTION TAKEN
 MAKE CORRECTIONS NOTED
 AMEND AND RESUBMIT
 Any action shown above is subject to the terms of the contract and does not relieve the contractor of any of its obligations under the contract including design and detailing.
 Contract No.: DB11002F
 By: *[Signature]* Date: 6/26/13



Jun 07, 2013 4:52pm C:\projects\work\copy of mba-template (50)\dms47038\0200-5-LM-U510.dwg

REV	DATE	BY	SUB	APP	DESCRIPTION
2	20130522				READY FOR CONSTRUCTION
1	20130117				READY FOR CONSTRUCTION
0	20121019				READY FOR CONSTRUCTION

DESIGNED BY
J. STREEPER
 DRAWN BY
K. MULLER
 CHECKED BY
K. MULLER
 IN CHARGE
J. STREEPER
 DATE
20130522



Skanska
Shimmick
Herzog
 1436 California Circle
Milpitas, California 95035
A Joint Venture
 SUBMITTED *[Signature]*

Lockwood, Andrews & Newnam, Inc.
 T-Y LIN INTERNATIONAL
 APPROVED *[Signature]*

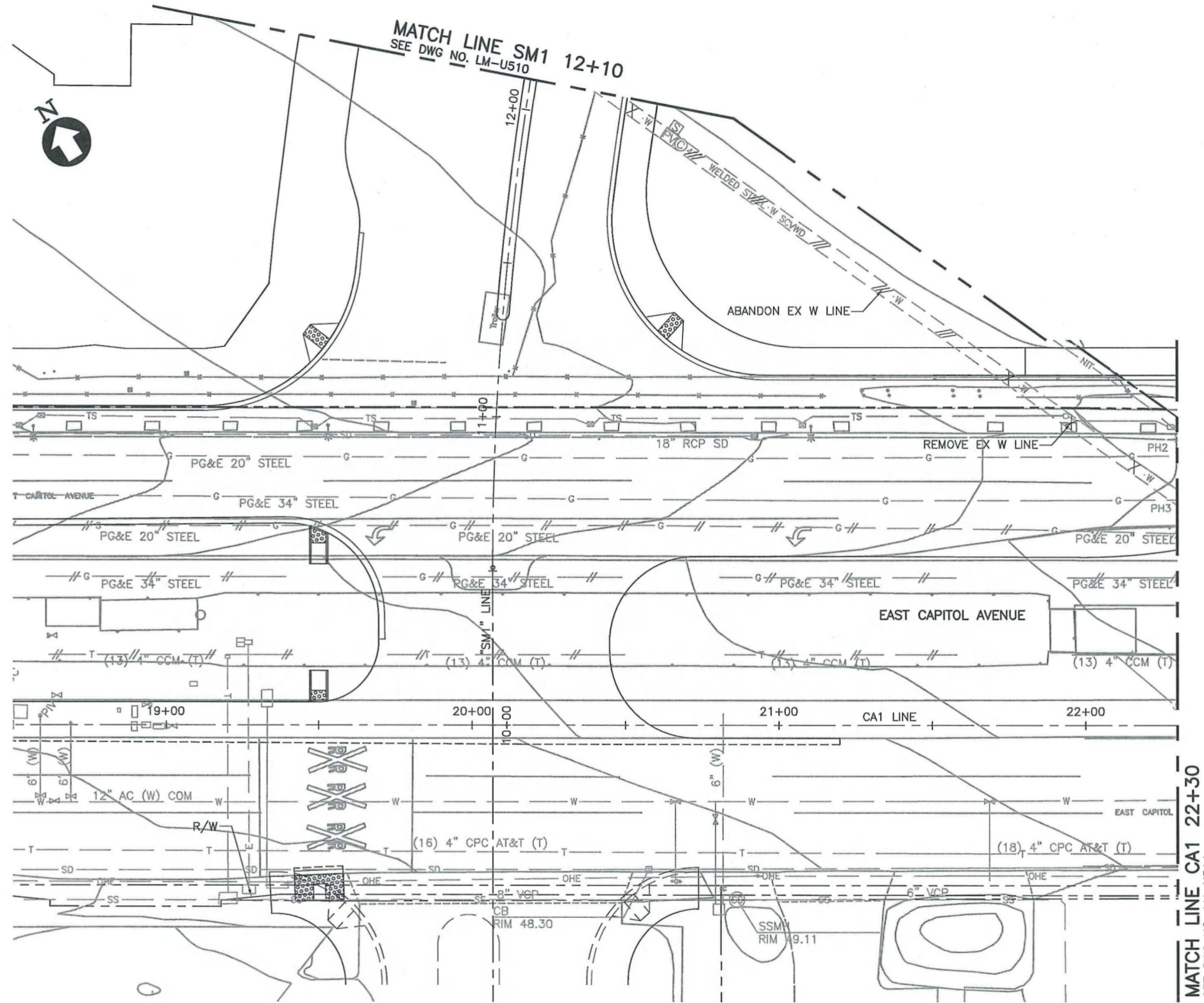


LINE, TRACK, STATIONS AND SYSTEMS
 DESIGN UNIT 012-WORK PACKAGE 01
 SOUTH MILPITAS BOULEVARD
 UTILITY RELOCATION PLAN (42" WATER)
 S1 374+75 TO S1 379+25

CADD FILENAME	C700-S-LM-U510.dwg
SIZE	D
SCALE	1"=20'
CONTRACT NO.	C700
REV.	2
AREA CODE	LM
SHEET NO.	U510
PAGE NO.	0024

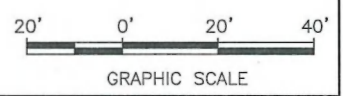
NOTES:

1. FOR NOTES AND LEGEND, SEE DRAWING LM-U001A.
2. STATION/OFFSET REFERS TO THE "CA1" LINE, UNLESS OTHERWISE NOTED.
3. SEE DRAWING LM-U413 IN MONTAGUE CAPITOL WORK PACKAGE FOR COM WATER RELOCATIONS.



PLAN

Santa Clara Valley Transportation Authority
 NO EXCEPTION TAKEN
 MAKE CORRECTIONS NOTED
 AMEND AND RESUBMIT
 Any action shown above is subject to the terms of the contract and does not relieve the contractor of any of its obligations under the contract including design and detailing.
 Contract No.: DB11002F
 By: *[Signature]* Date: 03/29/2013



Jan 16, 2013 5:41pm C:\projects\scvwd\42in RFC Rev1 Drawings\20130117.dwg

REV	DATE	BY	SUB	APP	DESCRIPTION
1	20130117				READY FOR CONSTRUCTION
0	20121019				READY FOR CONSTRUCTION

DESIGNED BY
J. CACCIOTTI
 DRAWN BY
J. CACCIOTTI
 CHECKED BY
B. WAGNER
 IN CHARGE
J. STREEPER
 DATE
20130117



Skanska
Shimmick
Herzog
 1436 California Circle
Milpitas, California 95035
A Joint Venture

LOCKWOOD, ANDREWS & NEVENS, INC.
 T-Y-LIN INTERNATIONAL

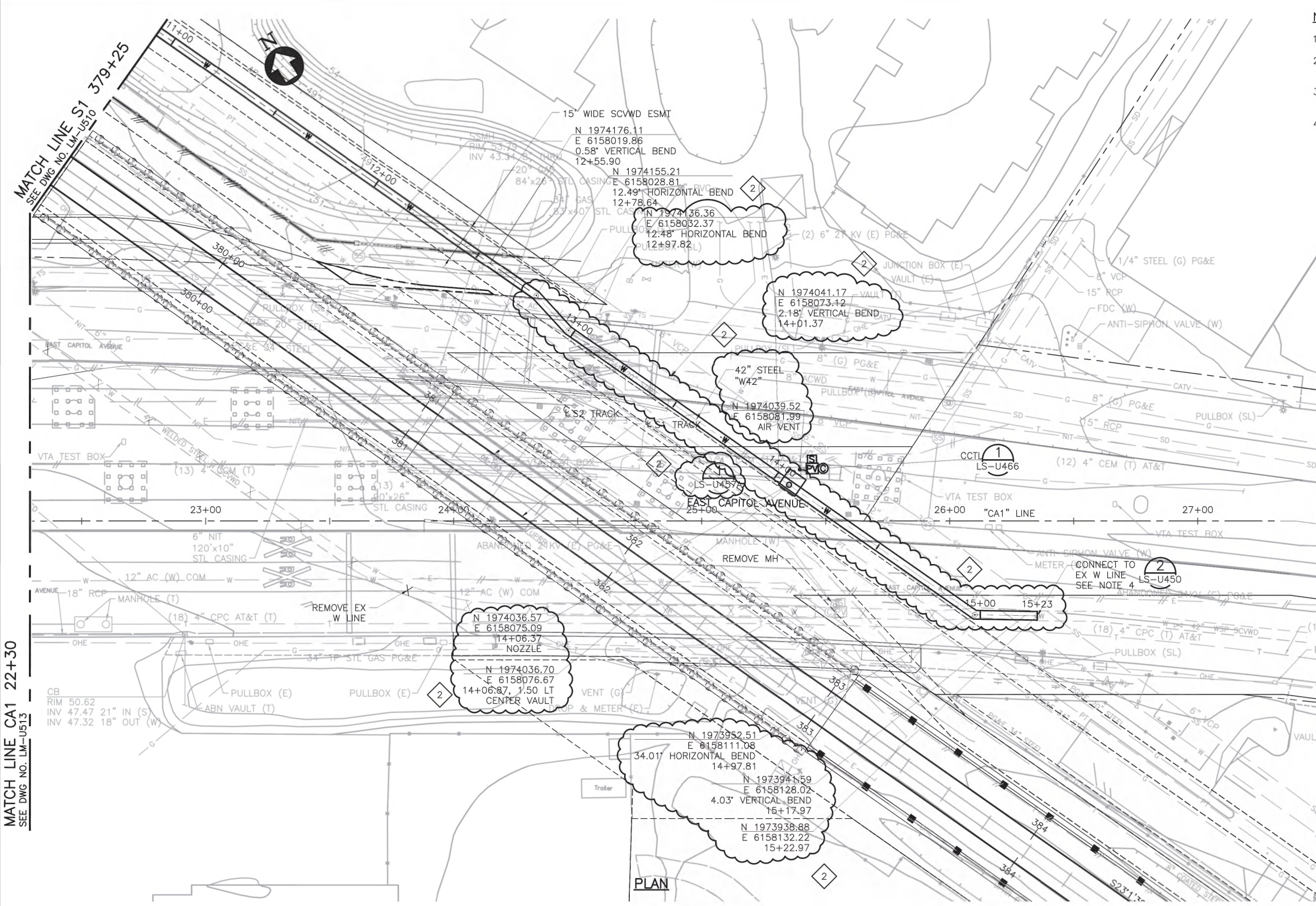


LINE, TRACK, STATIONS AND SYSTEMS
 EAST CAPITOL AVENUE
 UTILITY RELOCATION PLAN (42" WATER)
 CA1 18+50 TO CA1 22+30

CADD FILENAME C700-S-LM-U513.dwg	SIZE D	SCALE 1"=20'
CONTRACT NO. C700	SHEET NO. U513	PAGE NO. 0025
REV. 1		

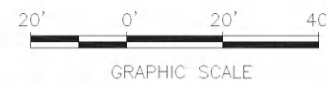
NOTES:

- FOR NOTES AND LEGEND, SEE DRAWING LM-U001A.
- STATION/OFFSET REFERS TO THE "W42" LINE, UNLESS OTHERWISE NOTED.
- SEE DRAWING LM-U414 IN MONTAGUE CAPITOL DU012 FOR COM WATER RELOCATIONS.
- CONNECT NEW 2" TELEMETRY CONDUIT TO EXISTING 2" CONDUIT. REMOVE EXISTING TELEMETRY CABLE AND PULL NEW TELEMETRY CABLE FROM EXISTING SPLICE BOX (NOT SHOWN), APPROX 350' TO THE SOUTHEAST.



Note: Drawing approved for 42" pipeline only. Final grading at The Crossing's basin pending review & approval in DU023. Do not fill above existing grade until final grading is approved. Final Design drawings to reflect approved final grades.

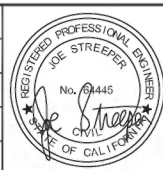
Santa Clara Valley Transportation Authority
 NO EXCEPTION TAKEN
 MAKE CORRECTIONS NOTED
 AMEND AND RESUBMIT
 Any action shown above is subject to the terms of the contract and does not relieve the contractor of any of its obligations under the contract including design and detailing.
 Contract No.: DB11002F
 By: *[Signature]* Date: 6/26/13



MATCH LINE CA1 22+30
 SEE DWG NO. LM-U513
 MATCH LINE S1 379+25
 SEE DWG NO. LM-U510

REV	DATE	BY	SUB	APP	DESCRIPTION
2	20130522				READY FOR CONSTRUCTION
1	20130117				READY FOR CONSTRUCTION
0	20121019				READY FOR CONSTRUCTION

DESIGNED BY
J. STREEPER
 DRAWN BY
K. MULLER
 CHECKED BY
K. MULLER
 IN CHARGE
J. STREEPER
 DATE
20130522



Skanska Shimmick Herzog
 1436 California Circle
 Milpitas, California 95035
 A Joint Venture

LOCKWOOD, ANDREWS & NEWNAM, INC.
 T.Y. LIN INTERNATIONAL

APPROVED *[Signature]*

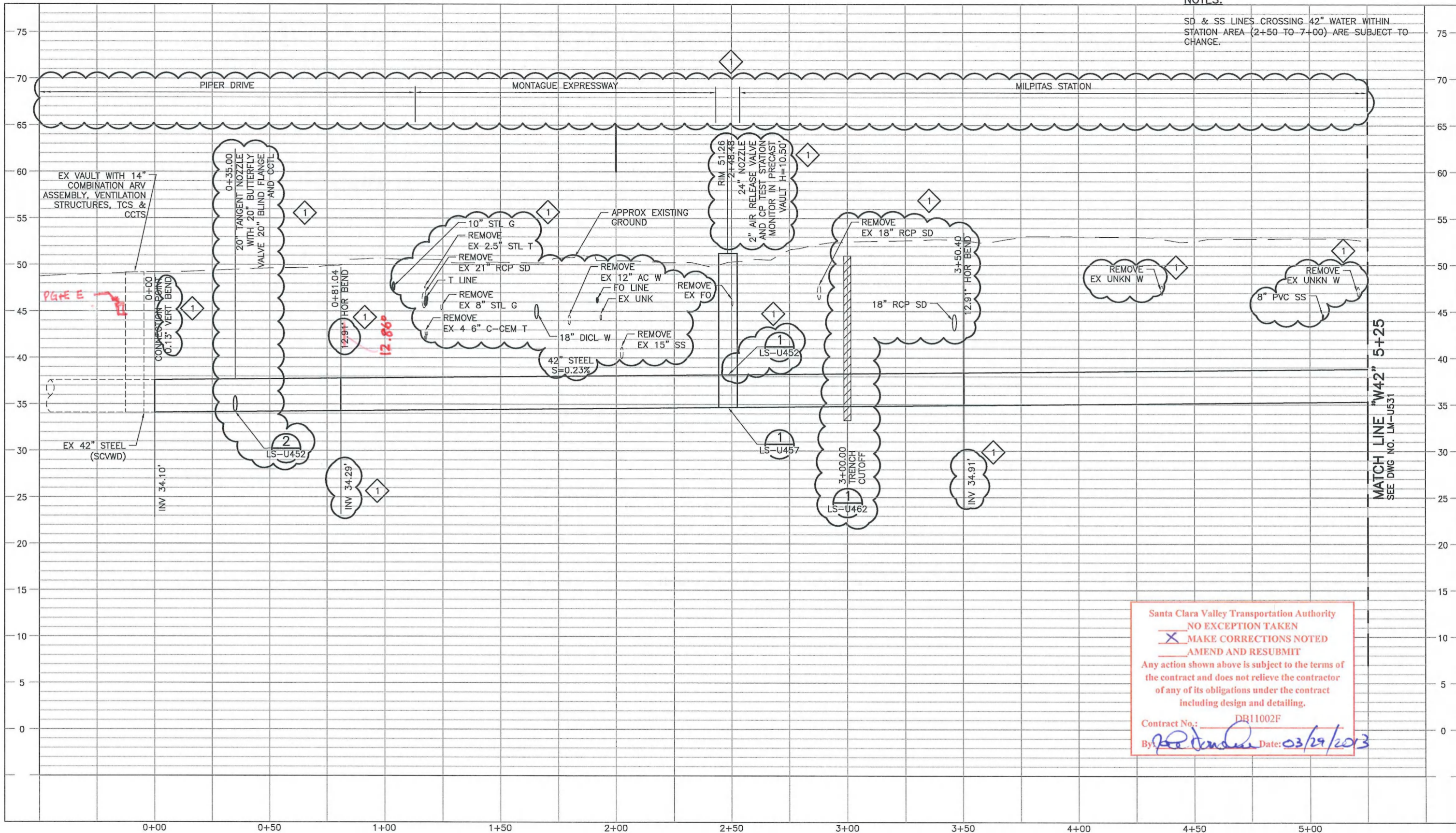
BART
 SILICON VALLEY
 BART SILICON VALLEY BERRYESSA EXTENSION

LINE, TRACK, STATIONS AND SYSTEMS
 DESIGN UNIT 012-WORK PACKAGE 01
 EAST CAPITOL AVENUE
 UTILITY RELOCATION PLAN (42" WATER)
 CA1 22+30 TO CA1 27+50

CADD FILENAME	C700-S-LM-U514.dwg
SIZE	D
SCALE	1"=20'
CONTRACT NO.	C700
REV.	2
AREA CODE	LM
SHEET NO.	U514
PAGE NO.	0026

NOTES:

SD & SS LINES CROSSING 42" WATER WITHIN STATION AREA (2+50 TO 7+00) ARE SUBJECT TO CHANGE.



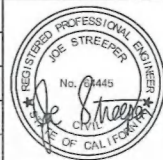
Santa Clara Valley Transportation Authority
 NO EXCEPTION TAKEN
 MAKE CORRECTIONS NOTED
 AMEND AND RESUBMIT
 Any action shown above is subject to the terms of the contract and does not relieve the contractor of any of its obligations under the contract including design and detailing.
 Contract No.: DR11002F
 By: *[Signature]* Date: 03/29/2013

PROFILE: "W42"

Jan 16, 2013 5:24pm C:\projects\scvwd\copy of mxb-template (28)\dms47038\700-S-LM-U530.dwg

REV	DATE	BY	SUB	APP	DESCRIPTION
1	20130117				READY FOR CONSTRUCTION
0	20121019				READY FOR CONSTRUCTION

DESIGNED BY
J. STREEPER
 DRAWN BY
K. MULLER
 CHECKED BY
B. WAGNER
 IN CHARGE
J. STREEPER
 DATE
20130117



Skanska Shimmick Herzog
 1436 California Circle
 Milpitas, California 95035
 A Joint Venture

LOCKWOOD ANDREWS & NEWMAN, INC.
 A LEOPOLD COMPANY

T-Y-LIN INTERNATIONAL

APPROVED: *[Signature]*



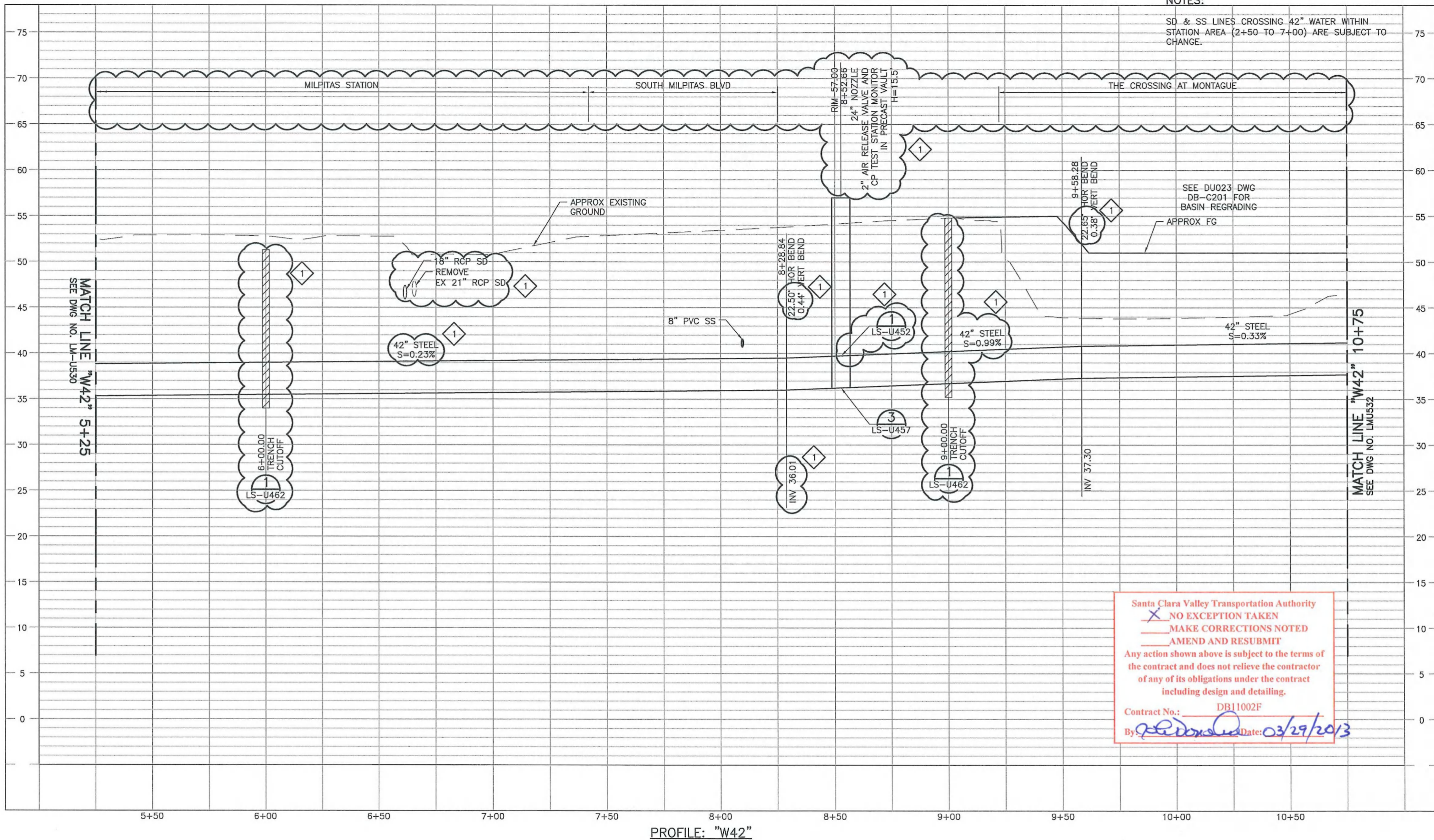
LINE, TRACK, STATIONS AND SYSTEMS

PROFILE
 "W42"
 42" WATER LINE

CADD FILENAME C700-S-LM-U530.dwg	SIZE D	SCALE 1"=20' H; 1"=5' V
CONTRACT NO. C700	SHEET NO. LM U530	REV. 1
AREA CODE	PAGE NO. 0027	

NOTES:

SD & SS LINES CROSSING 42" WATER WITHIN STATION AREA (2+50 TO 7+00) ARE SUBJECT TO CHANGE.

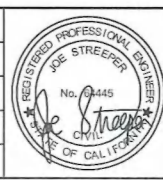


Santa Clara Valley Transportation Authority
 NO EXCEPTION TAKEN
 MAKE CORRECTIONS NOTED
 AMEND AND RESUBMIT
 Any action shown above is subject to the terms of the contract and does not relieve the contractor of any of its obligations under the contract including design and detailing.
 Contract No.: DB11002F
 By: *[Signature]* Date: 03/29/2013

Jan 16, 2013 5:27pm C:\projects\scvwd\copy of msk-template (28)\dms47038\c700-s-lm-u531.dwg

REV	DATE	BY	SUB	APP	DESCRIPTION
1	20130117				READY FOR CONSTRUCTION
0	20121019				READY FOR CONSTRUCTION

DESIGNED BY
J. STREEPER
 DRAWN BY
K. MULLER
 CHECKED BY
B. WAGNER
 IN CHARGE
J. STREEPER
 DATE
20130117



Skanska Shimmick Herzog
 1436 California Circle
 Milpitas, California 95035
 A Joint Venture

HMM
 SUBMITTED *[Signature]*

LAN Lockwood, Andrews & Newnam, Inc.
 APPROVED *[Signature]*

T-Y-LIN INTERNATIONAL

BART
 SILICON VALLEY
 BART SILICON VALLEY BERRYESSA EXTENSION

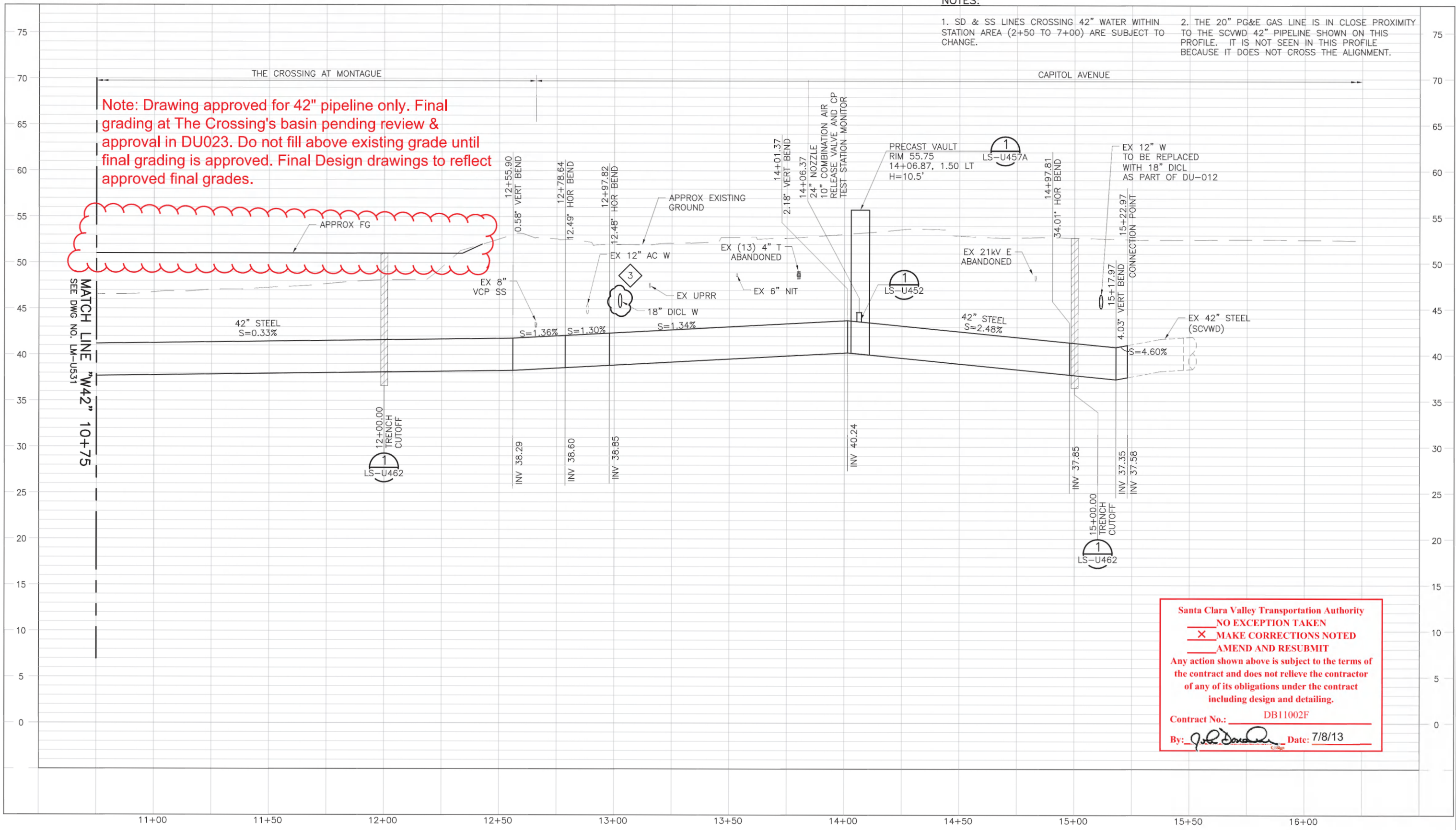
LINE, TRACK, STATIONS AND SYSTEMS
 PROFILE
 "W42"
 42" WATER LINE

CADD FILENAME C700-S-LM-U531.dwg	SIZE D	SCALE 1"=20' H; 1"=5' V	CONTRACT NO. C700	REV. 1
AREA CODE LM	SHEET NO. U531	PAGE NO. 0028		

NOTES:

1. SD & SS LINES CROSSING 42" WATER WITHIN STATION AREA (2+50 TO 7+00) ARE SUBJECT TO CHANGE.
2. THE 20" PG&E GAS LINE IS IN CLOSE PROXIMITY TO THE SCVWD 42" PIPELINE SHOWN ON THIS PROFILE. IT IS NOT SEEN IN THIS PROFILE BECAUSE IT DOES NOT CROSS THE ALIGNMENT.

Note: Drawing approved for 42" pipeline only. Final grading at The Crossing's basin pending review & approval in DU023. Do not fill above existing grade until final grading is approved. Final Design drawings to reflect approved final grades.

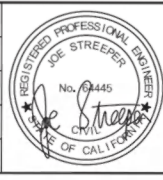


Santa Clara Valley Transportation Authority
 NO EXCEPTION TAKEN
 X MAKE CORRECTIONS NOTED
 AMEND AND RESUBMIT
 Any action shown above is subject to the terms of the contract and does not relieve the contractor of any of its obligations under the contract including design and detailing.
 Contract No.: DB11002F
 By: *[Signature]* Date: 7/8/13

PROFILE: "W42"

REV	DATE	BY	SUB	APP	DESCRIPTION
3	20130701				READY FOR CONSTRUCTION
2	20130522				READY FOR CONSTRUCTION
1	20130117				READY FOR CONSTRUCTION
0	20121019				READY FOR CONSTRUCTION

DESIGNED BY
J. STREEPER
 DRAWN BY
K. MULLER
 CHECKED BY
K. MULLER
 IN CHARGE
J. STREEPER
 DATE
20130701



Skanska Shimmick Herzog
 1436 California Circle
 Milpitas, California 95035
 A Joint Venture
 T.Y. LIN INTERNATIONAL
 APPROVED *[Signature]*

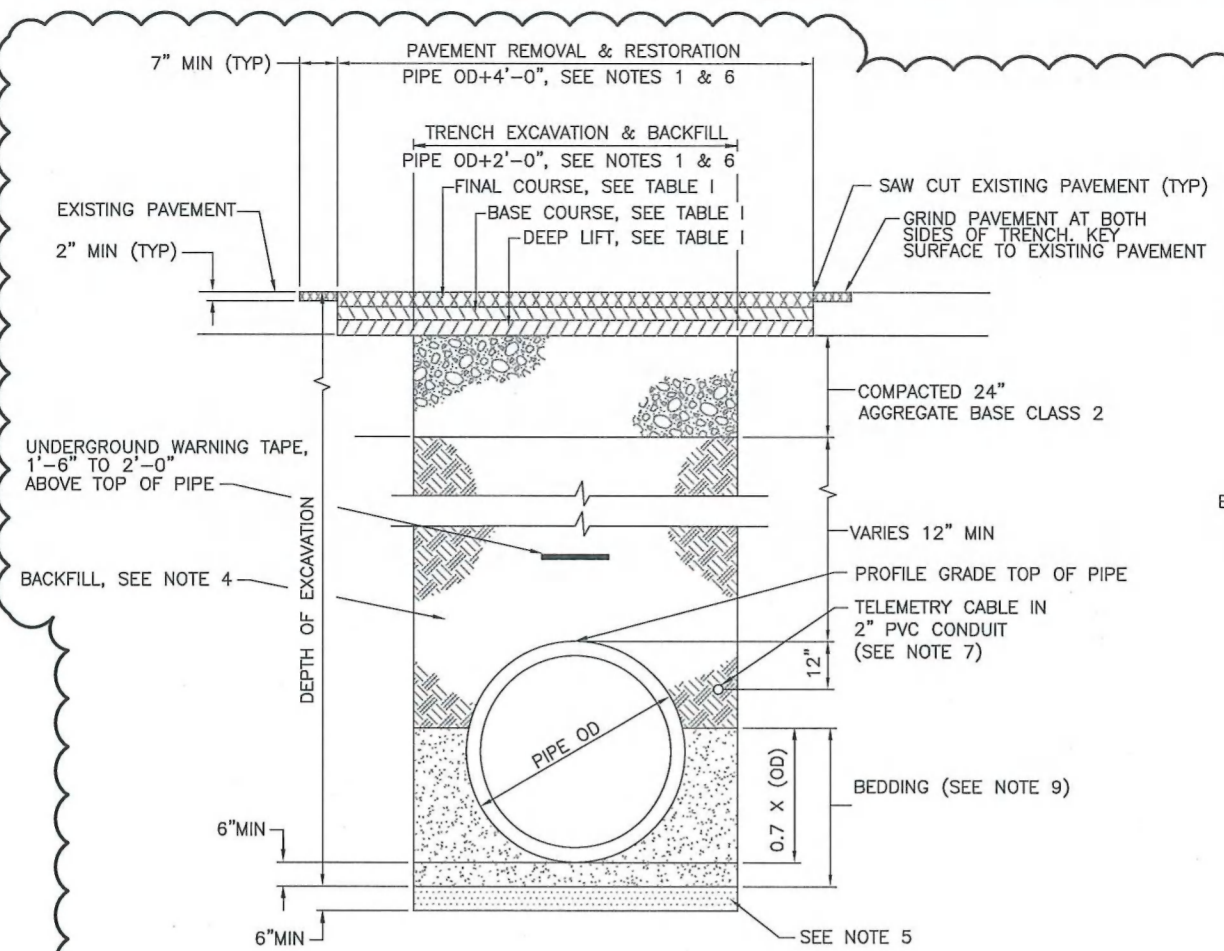
Lookwood, Andrews & Newsum, Inc.
 A T.Y. LIN COMPANY
 APPROVED *[Signature]*



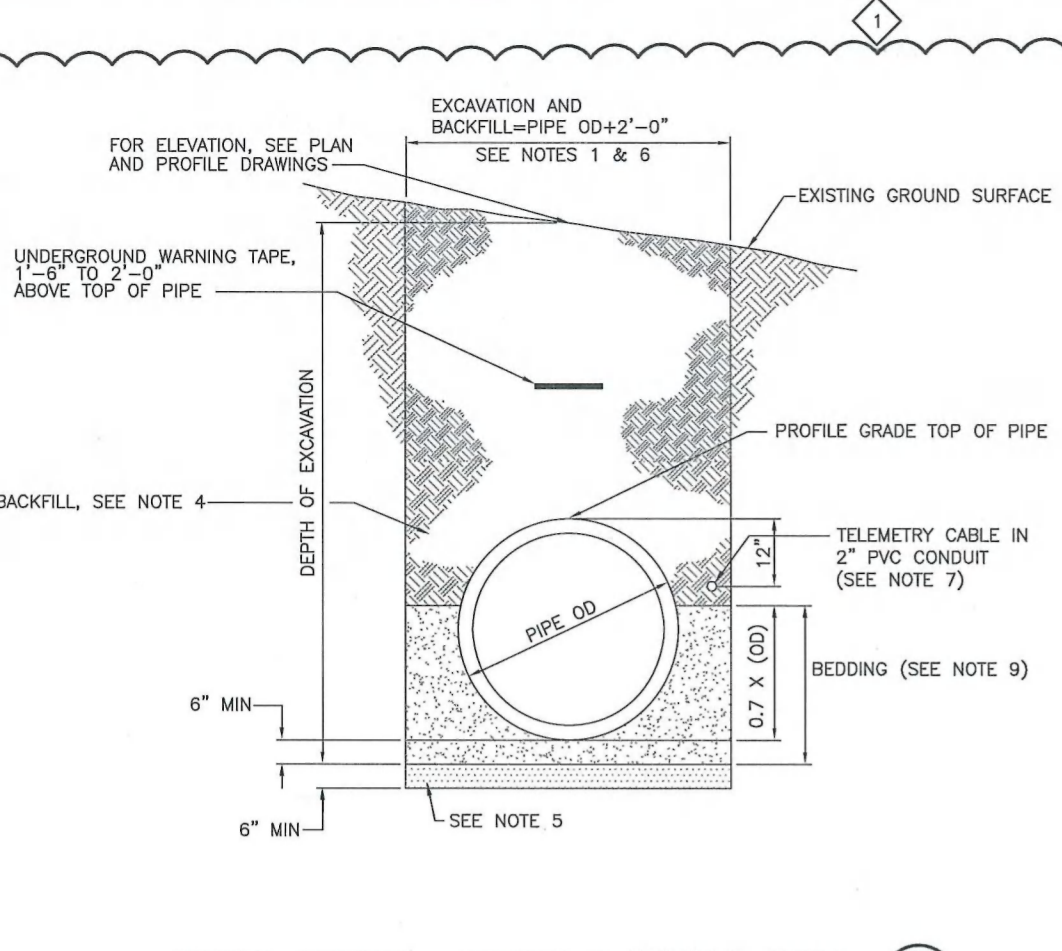
LINE, TRACK, STATIONS AND SYSTEMS
 DESIGN UNIT 012-WORK PACKAGE 01
 PROFILE
 "W42"
 42" WATER LINE

CADD FILENAME C700-S-LM-U532.dwg	SIZE D	SCALE 1"=20' H; 1"=5' V
CONTRACT NO. C700	SHEET NO. U532	REV. 3
AREA CODE LM	PAGE NO. 0029	

Jul 01, 2013 9:06am C:\projects\w42\copy of mba-template (50)\dm47038\0200-s-lm-u532.dwg



TYPICAL SECTION - TRENCH @ PAVED AREAS
NTS LS-U460



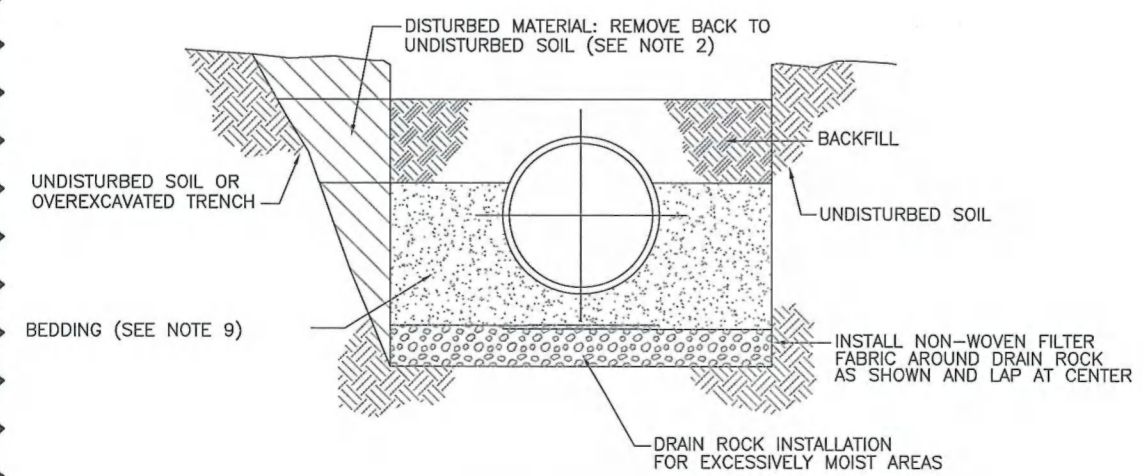
TYPICAL SECTION - TRENCH @ UNPAVED AREAS
NTS LS-U460

NOTES:

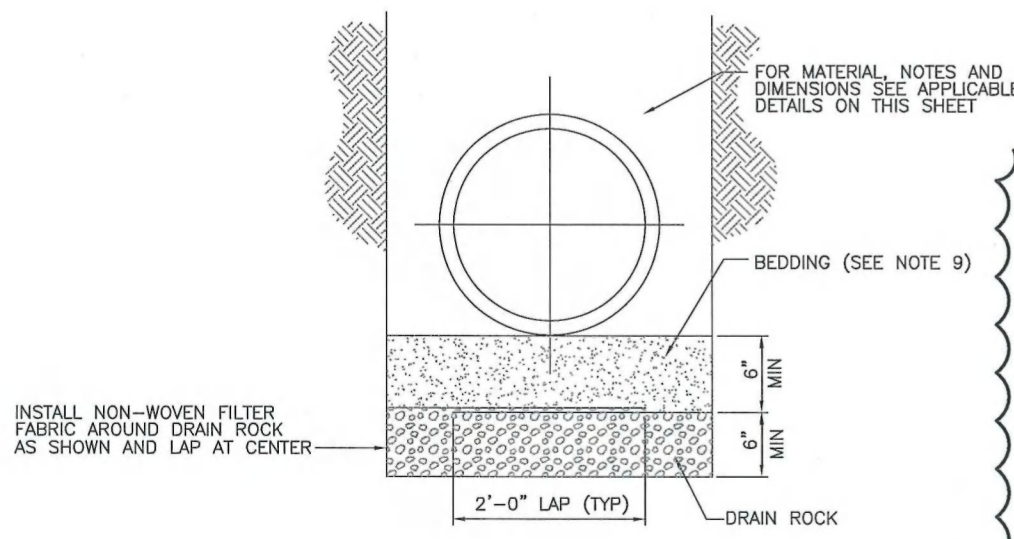
- TRENCHING SHALL CONFORM TO SAFETY REQUIREMENTS REGARDLESS OF TRENCH WIDTH.
- ALL OVEREXCAVATION OR DISTURBED NATIVE MATERIAL SHALL BE REMOVED FROM THE TRENCH AND BACKFILLED WITH THE SAME MATERIAL AS REQUIRED FOR TRENCH BACKFILL FOR THE DESIGNATED DEPTHS.
- ALL EXISTING FACILITIES DAMAGED BY THE CONTRACTOR SHALL BE RESTORED IN ACCORDANCE WITH THE REQUIREMENTS OF THE AUTHORITY WITH JURISDICTION.
- BEDDING MATERIAL MAY BE USED AS AN ALTERNATIVE TO TYPE "A" AND TYPE "B" BACKFILL. IN CITY OF MILPITAS R/W, USE AGGREGATE BASE CLASS 2.
- IF UNSUITABLE MATERIAL IS ENCOUNTERED, AS DEFINED IN THE SPECIFICATIONS, OVEREXCAVATE AND REPLACE WITH SUITABLE MATERIAL OR DRAIN ROCK PER DETAIL 4.
- MINIMUM TRENCH WIDTH SHALL BE AS SHOWN. VARIATION OF THE TRENCH DIMENSIONS OR CONFIGURATION FROM THOSE SHOWN ON THE DRAWINGS MAY RESULT IN A CHANGE IN THE PIPE DESIGN. SEE SPECIFICATIONS.
- 2" PVC CONDUIT WITH TELEMETRY CABLE IS NOT INCLUDED ON THE 66" CENTRAL PIPELINE
- REMOVAL OF SHORING SHALL BE COORDINATED WITH PLACEMENT OF SOIL-CEMENT.
- BEDDING SHALL BE ANY OF:
A) COMPACTED SELECT BACKFILL MATERIAL
B) SOIL CEMENT
C) CONTROLLED LOW STRENGTH MATERIAL (CLSM)
D) CONTROLLED DENSITY FILL (CDF)
- WHEN BEDDING USED IS SOIL CEMENT, CLSM, OR CDF, SEE DRAWING LS-U461 FOR SAND PADS.

JURISDICTION	ASPHALT CONCRETE PAVEMENT		
	DEEP LIFT (INCHES)	BASE COURSE (INCHES)	FINAL COURSE (INCHES)
COUNTY OF SANTA CLARA	*	*	*
CITY OF MILPITAS	6	4	1

* MATCH EXIST



OVEREXCAVATION OR CAVE-IN CORRECTIVE PROCEDURE
NTS LS-U460



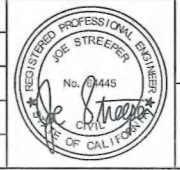
DRAIN ROCK INSTALLATION
NTS LS-U460

Santa Clara Valley Transportation Authority
 NO EXCEPTION TAKEN
 MAKE CORRECTIONS NOTED
 AMEND AND RESUBMIT
 Any action shown above is subject to the terms of the contract and does not relieve the contractor of any of its obligations under the contract including design and detailing.
 Contract No.: DB11002F
 By: *[Signature]* Date: 03/19/2013

Jun 16, 2013 3:28pm C:\projects\scvwd\mbox-occur\dm34586\7700-S-LS-U460.dwg
 ocanivel

REV	DATE	BY	SUB	APP	DESCRIPTION
1	20130117				READY FOR CONSTRUCTION
0	20121019				READY FOR CONSTRUCTION

DESIGNED BY
J. STREEPER
 DRAWN BY
A. CANIVEL
 CHECKED BY
B. WAGNER
 IN CHARGE
J. STREEPER
 DATE
20130117



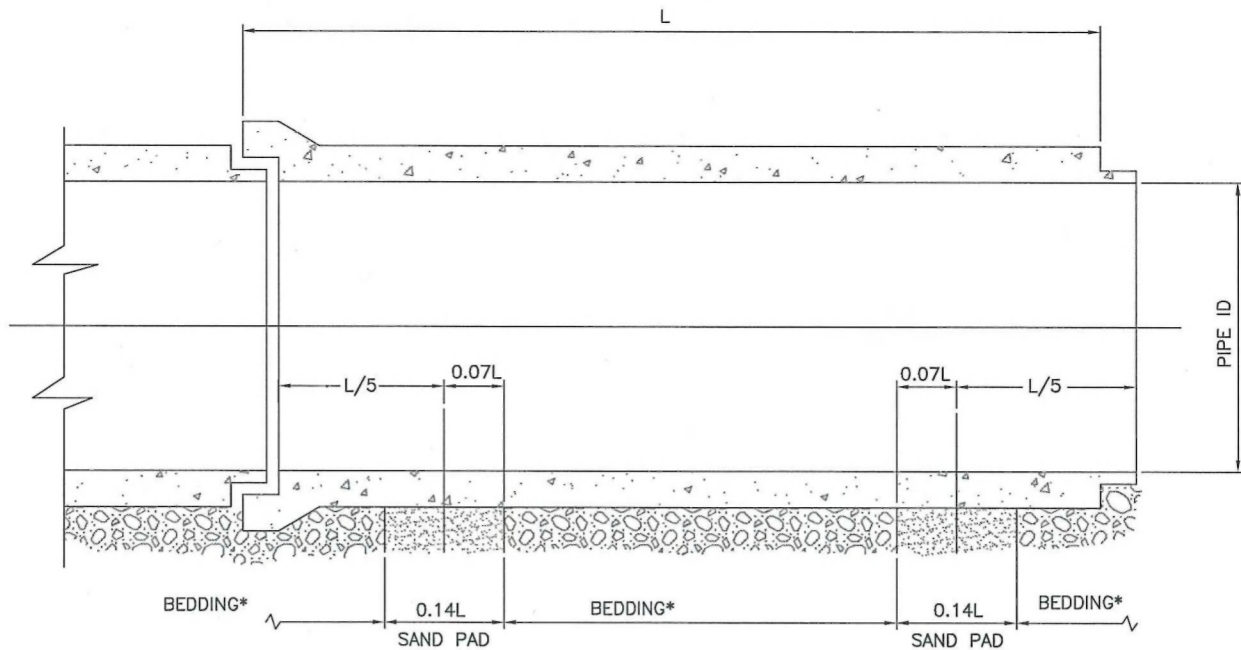
Skanska Shimmick Herzog
 1436 California Circle
 Milpitas, California 95035
 A Joint Venture

Submitted: *[Signature]*
 Approved: *[Signature]*



LINE, TRACK, STATIONS AND SYSTEMS
 SCVWD WATER PIPELINE
 DETAILS
 TRENCH SECTIONS

CADD FILENAME C700-S-LS-U460.dwg	SIZE D	SCALE AS NOTED
CONTRACT NO. C700	SHEET NO. LS U460	REV. 1
AREA CODE LS	PAGE NO. 0039	



SAND PADS*

1
NTS LS-U461

* THIS DETAIL DOES NOT APPLY WHERE BEDDING IS SELECT BACKFILL MATERIAL.

Santa Clara Valley Transportation Authority

NO EXCEPTION TAKEN

MAKE CORRECTIONS NOTED

AMEND AND RESUBMIT

Any action shown above is subject to the terms of the contract and does not relieve the contractor of any of its obligations under the contract including design and detailing.

Contract No.: DB11002F

By: *[Signature]* Date: 03/29/2013

Jan 16, 2013 3:30pm C:\project\scvwd\mbox-ocanivel\gms\4596\C700-S-LS-U461.dwg

REV	DATE	BY	SUB	APP	DESCRIPTION
1	20130117				READY FOR CONSTRUCTION
0	20121019				READY FOR CONSTRUCTION

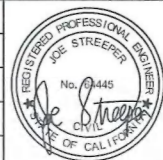
DESIGNED BY
J. STREEPER

DRAWN BY
A. CANIVEL

CHECKED BY
B. WAGNER

IN CHARGE
J. STREEPER

DATE
20130117



Skanska Shimmick Herzog

1436 California Circle
Milpitas, California 95035
A Joint Venture

HMM

SUBMITTED *[Signature]*

LAN Lockwood, Andrews & Newnam, Inc. T-Y-LIN INTERNATIONAL

APPROVED *[Signature]*

BART
VTA SILICON VALLEY

BART SILICON VALLEY BERRYESSA EXTENSION

LINE, TRACK, STATIONS AND SYSTEMS

SCVWD WATER PIPELINE
DETAILS
TRENCH SECTIONS

CADD FILENAME C700-S-LS-U461.dwg		
SIZE D	SCALE AS NOTED	REV. 1
CONTRACT NO. C700		PAGE NO. 0040
AREA CODE LS	SHEET NO. U461	