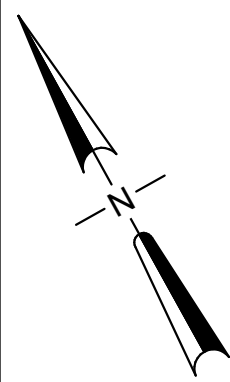
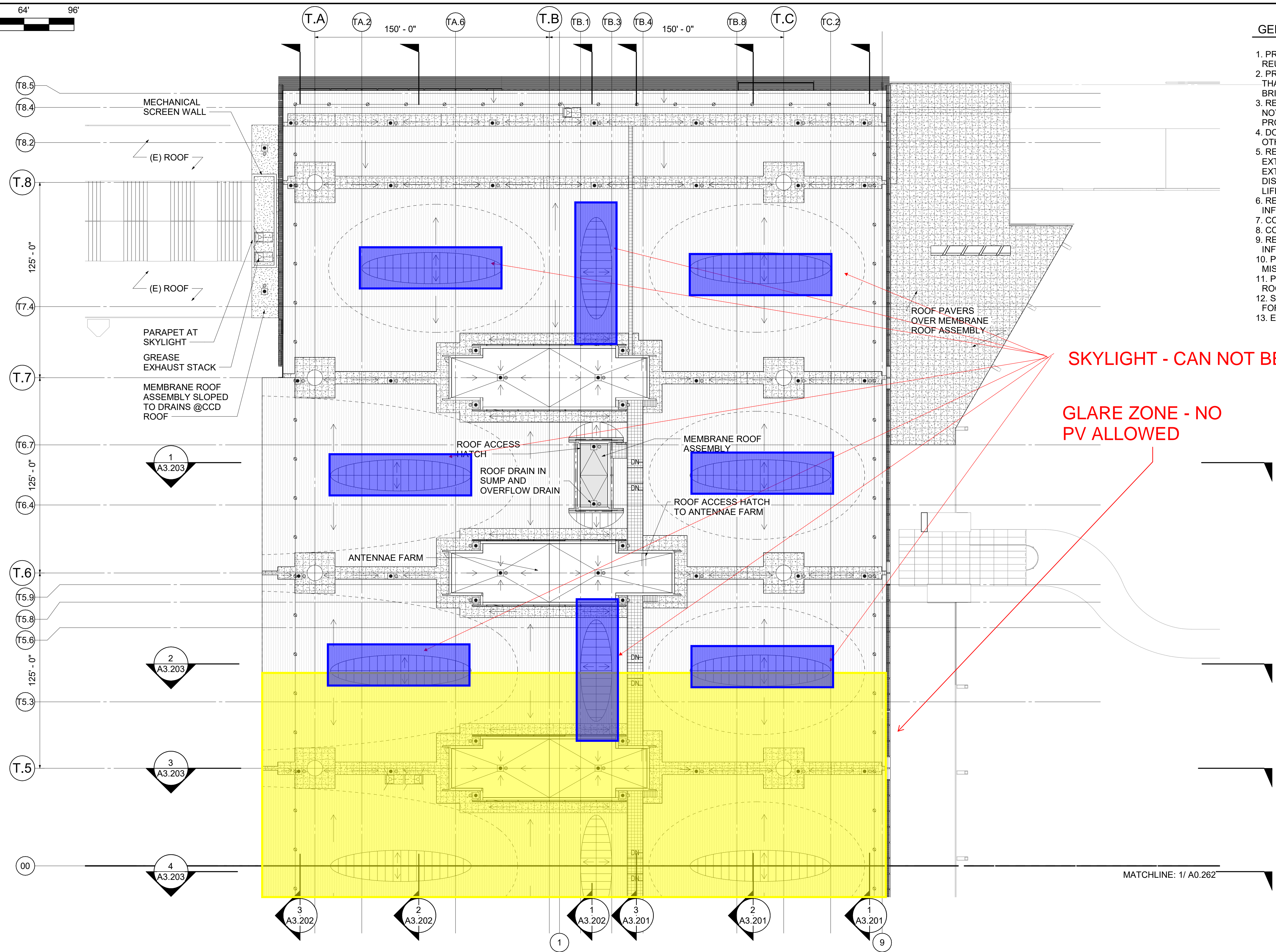


0" 16' 32' 64' 96'  
SCALE: IN FEET



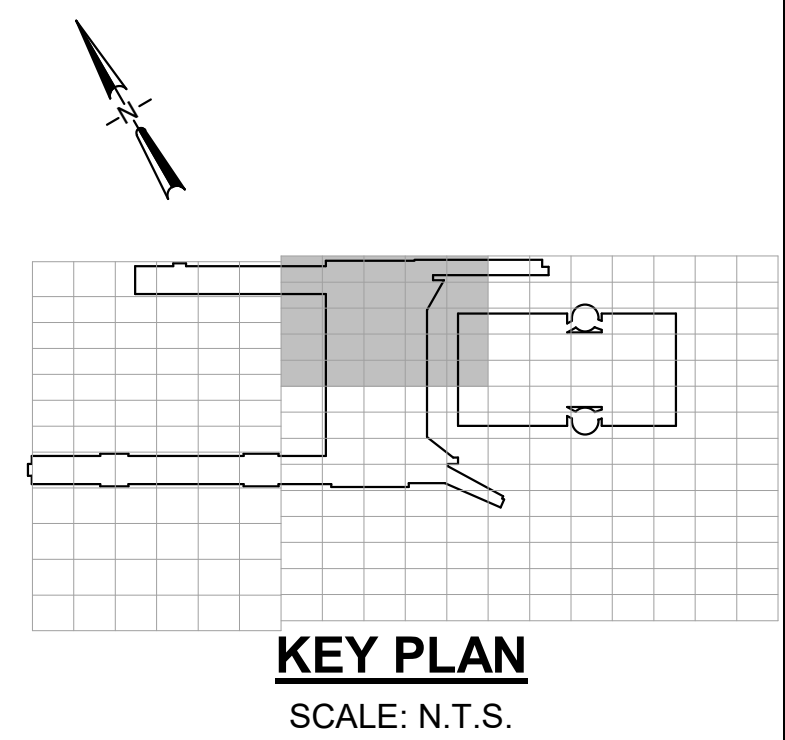
GENERAL NOTES

1. PROTECT EXISTING BUILDING ELEMENTS THAT ARE BEING REUSED.
2. PROTECT EXISTING BUILDING ELEMENTS FROM STAINING THAT ARE TO BE EXPOSED, SUCH AS CONC, MTL AND BRICK.
3. REFER TO G1.200 SHEET SERIES ADDITIONAL GENERAL NOTES, ABBREVIATIONS, SYMBOL LEGEND AND OTHER PROJECT INFORMATION.
4. DOOR LOCATIONS ARE PER SHEET (TBD) UNLESS OTHERWISE NOTED IN PLAN.
5. REFER TO LIFE SAFETY DRAWINGS FOR LOCATION & EXTENT OF ALL FIRE RATED ASSEMBLIES, FIRE EXTINGUISHER LOCATIONS, EXIT SIGNS, TRAVEL DISTANCES, EXIT LOCATIONS, OCCUPANCY LOADS & OTHER LIFE SAFETY REQUIREMENTS.
6. REFER TO ENLARGED PLANS FOR ADDITIONAL INFORMATION
7. COORDINATE OPENINGS THROUGH WALLS
8. COORDINATE ALL DEVICES ON WALLS
9. REFER TO SHEET (TBD) FOR INTERIOR WALL PARTITION INFORMATION.
10. PROVIDE WALL BACKING TO SUPPORT HANDRAILS & MISCELLANEOUS EQUIPMENT MOUNTED ON STUD WALLS.
11. PROVIDE FIRE TREATED PLYWOOD AT TELECOM (TC) ROOMS, ELECTRICAL & RADIO ROOMS.
12. SEE VERTICAL TRANSPORTATION (VT.# SERIES SHEETS) FOR ELEVATOR INFORMATION.
13. EXTERIOR ASSEMBLIES PER SHEETS A8.000 SERIES.



SKYLIGHT - CAN NOT BE COVERED

GLARE ZONE - NO PV ALLOWED

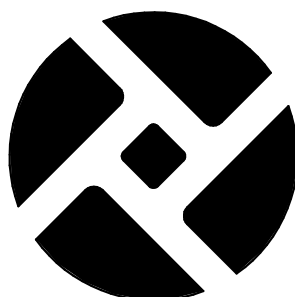


KEY PLAN  
SCALE: N.T.S.

CAN YOU SEE THE AIRPLANES? THE ADJACENT SAMPLES SHOW THREE DIFFERENT LEVELS OF SHADING. SETTINGS FOR VIEWING AND PRINTING DRAWING CONTENT ARE OPTIMIZED WHEN ALL THREE PLANES ARE VISIBLE. THIS GUIDANCE IS PROVIDED FOR REFERENCE ONLY.



NO.	DATE	BY	REVISIONS	APP'VD	CK'D	NO.	DATE	BY	REVISIONS	APP'VD	CK'D



PORT OF PORTLAND  
PORTLAND, OREGON

ZGF  
ZIMMER GANDE FRASCA ARCHITECTS LLP  
1223 SW Washington Street, Suite 200  
Portland, OR 97205  
T 503 224 3880 • F 503 224 2482

102191  
PROJECT NUMBER

DESIGN NUMBER

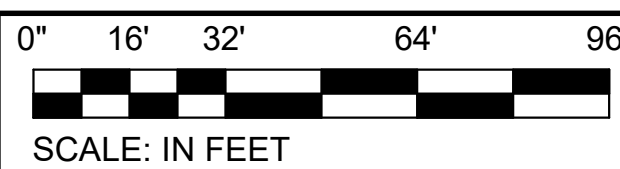
SD PROGRESS  
PRELIMINARY NOT FOR  
CONSTRUCTION

DESIGNED BY	G. SANDOVAL
DRAWN BY	K. MURNEY
CHECKED BY	N. SLAYTON
DATE	SEPTEMBER 2018
SCALE	As indicated

PORTLAND INTERNATIONAL AIRPORT				
PDXNEXT TCORE ROOF - NORTH - CORE AND SHELL				
SUBMITTED BY	TYPE	DRAWING NO.	SHEET NO.	DISC. SHT. NO.
PROJECT ENGINEER	SD		A0.261	

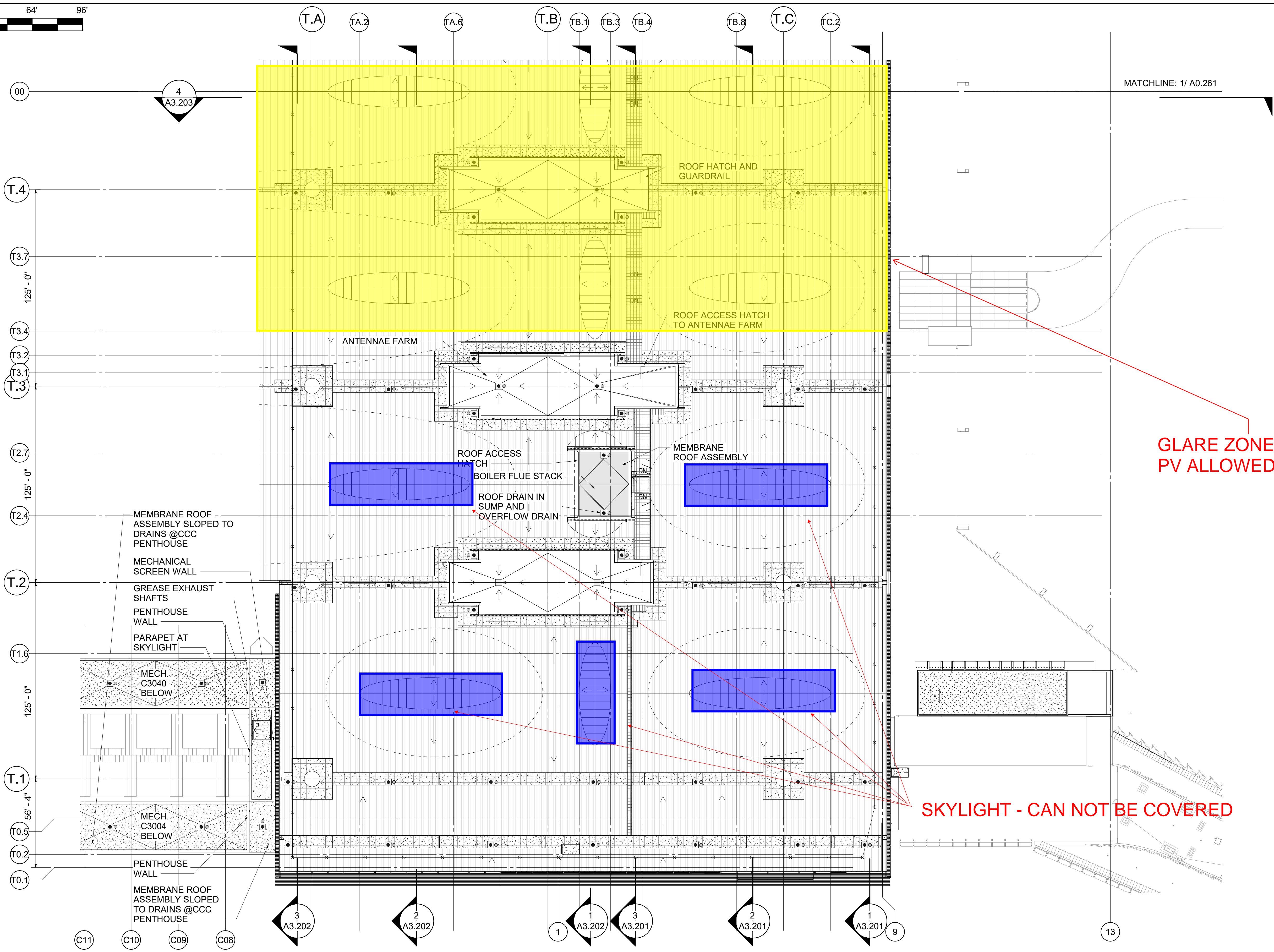


GRAPHIC SCALE FOR REFERENCE ONLY



SCALE: IN FEET

CAN YOU SEE THE AIRPLANES? THE ADJACENT SAMPLES SHOW THREE DIFFERENT LEVELS OF SHADING. SETTINGS FOR VIEWING AND PRINTING DRAWING CONTENT ARE OPTIMIZED WHEN ALL THREE PLANES ARE VISIBLE. THIS GUIDANCE IS PROVIDED FOR REFERENCE ONLY.

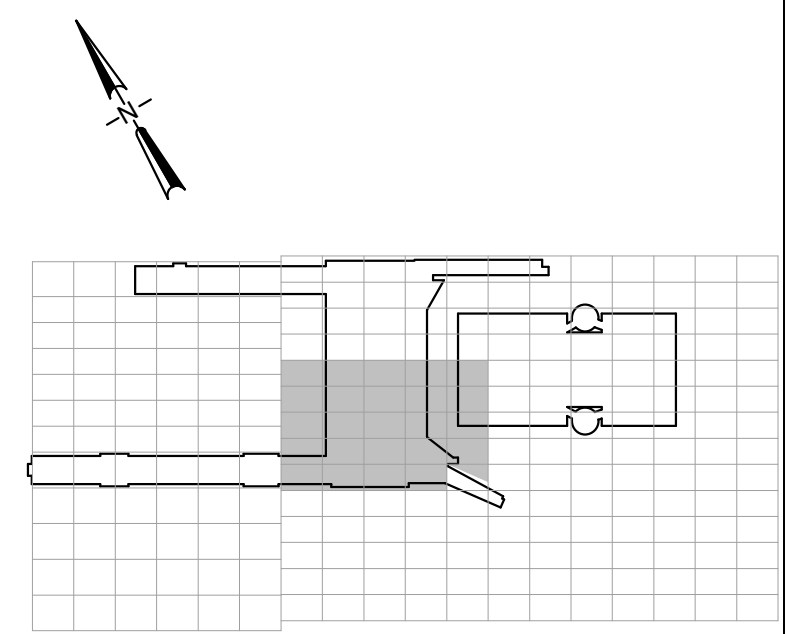


- GENERAL NOTES
1. PROTECT EXISTING BUILDING ELEMENTS THAT ARE BEING REUSED
  2. PROTECT EXISTING BUILDING ELEMENTS FROM STAINING THAT ARE TO BE EXPOSED, SUCH AS CONC, MTL AND BRICK.
  3. REFER TO GI.200 SHEET SERIES ADDITIONAL GENERAL NOTES, ABBREVIATIONS, SYMBOL LEGEND AND OTHER PROJECT INFORMATION.
  4. DOOR LOCATIONS ARE PER SHEET (TBD) UNLESS OTHERWISE NOTED IN PLAN.
  5. REFER TO LIFE SAFETY DRAWINGS FOR LOCATION & EXTENT OF ALL FIRE RATED ASSEMBLIES, FIRE EXTINGUISHER LOCATIONS, EXIT SIGNS, TRAVEL DISTANCES, EXIT LOCATIONS, OCCUPANCY LOADS & OTHER LIFE SAFETY REQUIREMENTS.
  6. REFER TO ENLARGED PLANS FOR ADDITIONAL INFORMATION
  7. COORDINATE OPENINGS THROUGH WALLS
  8. COORDINATE ALL DEVICES ON WALLS
  9. REFER TO SHEET (TBD) FOR INTERIOR WALL PARTITION INFORMATION.
  10. PROVIDE WALL BACKING TO SUPPORT HANDRAILS & MISCELLANEOUS EQUIPMENT MOUNTED ON STUD WALLS.
  11. PROVIDE FIRE TREATED PLYWOOD AT TELECOM (TC) ROOMS, ELECTRICAL & RADIO ROOMS.
  12. SEE VERTICAL TRANSPORTATION (VT.# SERIES SHEETS) FOR ELEVATOR INFORMATION.
  13. EXTERIOR ASSEMBLIES PER SHEETS A8.000 SERIES.

MATCHLINE: 1/ A0.261

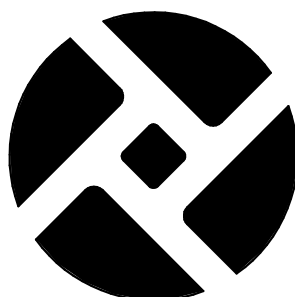
GLARE ZONE - NO PV ALLOWED

SKYLIGHT - CAN NOT BE COVERED



KEY PLAN  
SCALE: N.T.S.

NO.	DATE	BY	REVISIONS	APP'VD	CK'D	NO.	DATE	BY	REVISIONS	APP'VD	CK'D



PORT OF PORTLAND  
PORTLAND, OREGON

**ZGF**  
ZIMMER GANDE FRASCA ARCHITECTS LLP  
1223 SW Washington Street, Suite 200  
Portland, OR 97205  
T 503 224 3880 • F 503 224 2482

102191  
PROJECT NUMBER

SD PROGRESS  
PRELIMINARY NOT FOR  
CONSTRUCTION

DESIGNED BY	G. SANDOVAL
DRAWN BY	K. MURNEY
CHECKED BY	N. SLAYTON
DATE	SEPTEMBER 2018
SCALE	As indicated

PORTLAND INTERNATIONAL AIRPORT			
PDXNEXT TCORE ROOF - SOUTH - CORE AND SHELL			
SUBMITTED BY	PROJECT ENGINEER	TYPE	SD
DRAWING NO.	SHEET NO.	DISC. SHT. NO.	A0.262



GROUND MOUNTED SITE 1



GLARE ZONE - NO PV ALLOWED

AVAILABLE AREA



## GROUND MOUNTED SITE 2



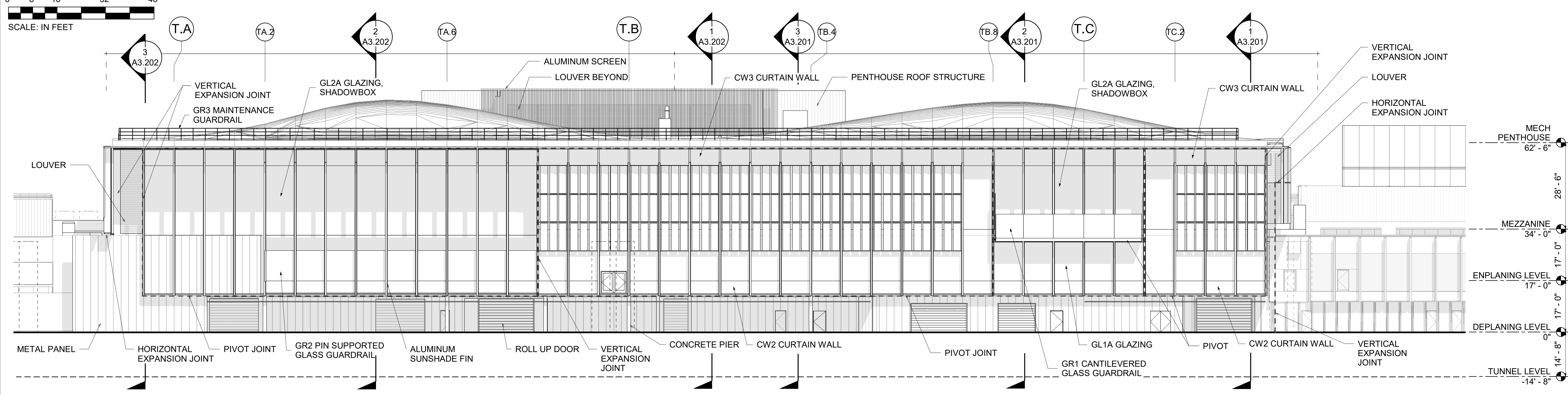
AVAILABLE AREA

CAN YOU SEE THE AIRPLANES? THE ADJACENT SAMPLES SHOW THREE DIFFERENT LEVELS OF SHADING. SETTINGS FOR VIEWING AND PRINTING DRAWING CONTENT ARE OPTIMIZED WHEN ALL THREE PLANES ARE VISIBLE. THIS GUIDANCE IS PROVIDED FOR REFERENCE ONLY.

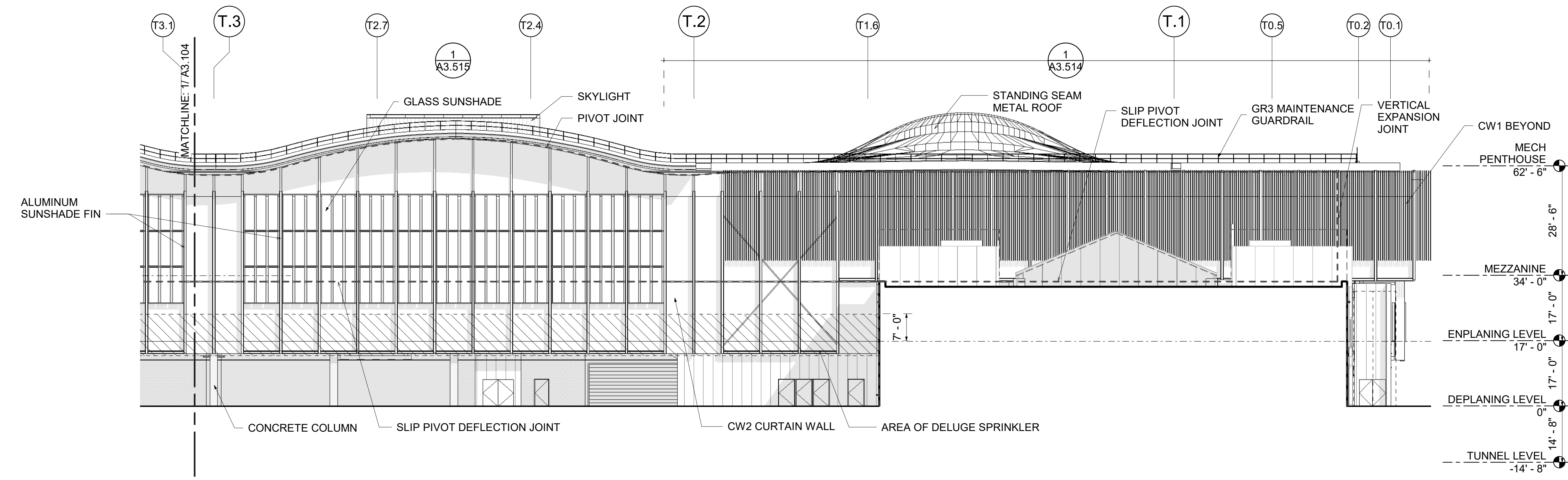


GRAPHIC SCALE FOR REFERENCE ONLY  
0 1/4" 1/2" 1" 2"

0' 8' 16' 32' 48'  
SCALE: IN FEET



1 EXTERIOR ELEVATION 1/16" - SOUTH  
1/16" = 1'-0"



2 EXTERIOR ELEVATION 1/16" - WEST 1  
1/16" = 1'-0"

REVISIONS					REVISIONS				
NO.	DATE	BY	REVISIONS	APP'VD	NO.	DATE	BY	REVISIONS	APP'VD



PORT OF PORTLAND  
PORTLAND, OREGON

**ZGF**  
ZIMMER GANDE FRASCA ARCHITECTS LLP  
1223 SW Washington Street, Suite 200  
Portland, OR 97205  
T 503 224 3860 • F 503 224 2482

102191  
PROJECT NUMBER

SD PROGRESS  
PRELIMINARY NOT FOR  
CONSTRUCTION

DESIGNED BY G. SANDOVAL  
DRAWN BY M. RICK  
CHECKED BY K. STOREY  
DATE SEPTEMBER 2018  
SCALE AS SHOWN

PORTLAND INTERNATIONAL AIRPORT

PDXNEXT TCORE  
EXTERIOR ELEVATIONS - SOUTH - WEST 1

SUBMITTED BY \_\_\_\_\_ TYPE **SD** DRAWING NO. \_\_\_\_\_ SHEET NO. **A3.103** DISC. SHT. NO. \_\_\_\_\_  
PROJECT ENGINEER





PV Technology Comparison

	Roof Mounted PV	Ground Mounted PV	Building Integrated PV Curtain Wall
Unit Cost, including Installation (\$/panel)	\$1,250	\$1,100	\$3,800
Panel Dimensions	3.3' H x 6.5' W	3.3' H x 6.5' W	5.7' H x 4.5' W
Panel Capacity (kW per Panel)	0.35	0.35	0.15
Recommended Azimuth (degrees)	215	180	300
Recommended Tilt (degrees)	20	25	90
Energy Productivity @ Recommended Azimuth/Tilt (kWh/kW PV/year)	1102	1152	519
Value of Electricity Generated (\$/kWh)	\$0.0970	\$0.0350	\$0.0970
Plan Area per Panel (square feet)	20.2	19.4	N/A
Required Spacing Between Rows to avoid self-shading (feet)	4.1	5.1	N/A
Installation Crew	1 Electrician + 1 Electrician Apprentice	1 Electrician + 1 Electrician Apprentice	2 Glaziers + 2 Steel Workers + 1 Electrician
Productivity	31 panels per day per crew	60 panels per day per crew	200 square feet per day per crew (no difference from standard curtain wall)
Additional Costs/Credits	None	1. Add additional \$100,000 per site installed for infrastructure upgrades to connect to grid power	1. Deduct \$90 per sf of PV curtain wall for replaced standard curtain wall 2. Deduct \$25/lf of PV curtain wall for removed exterior solar shading