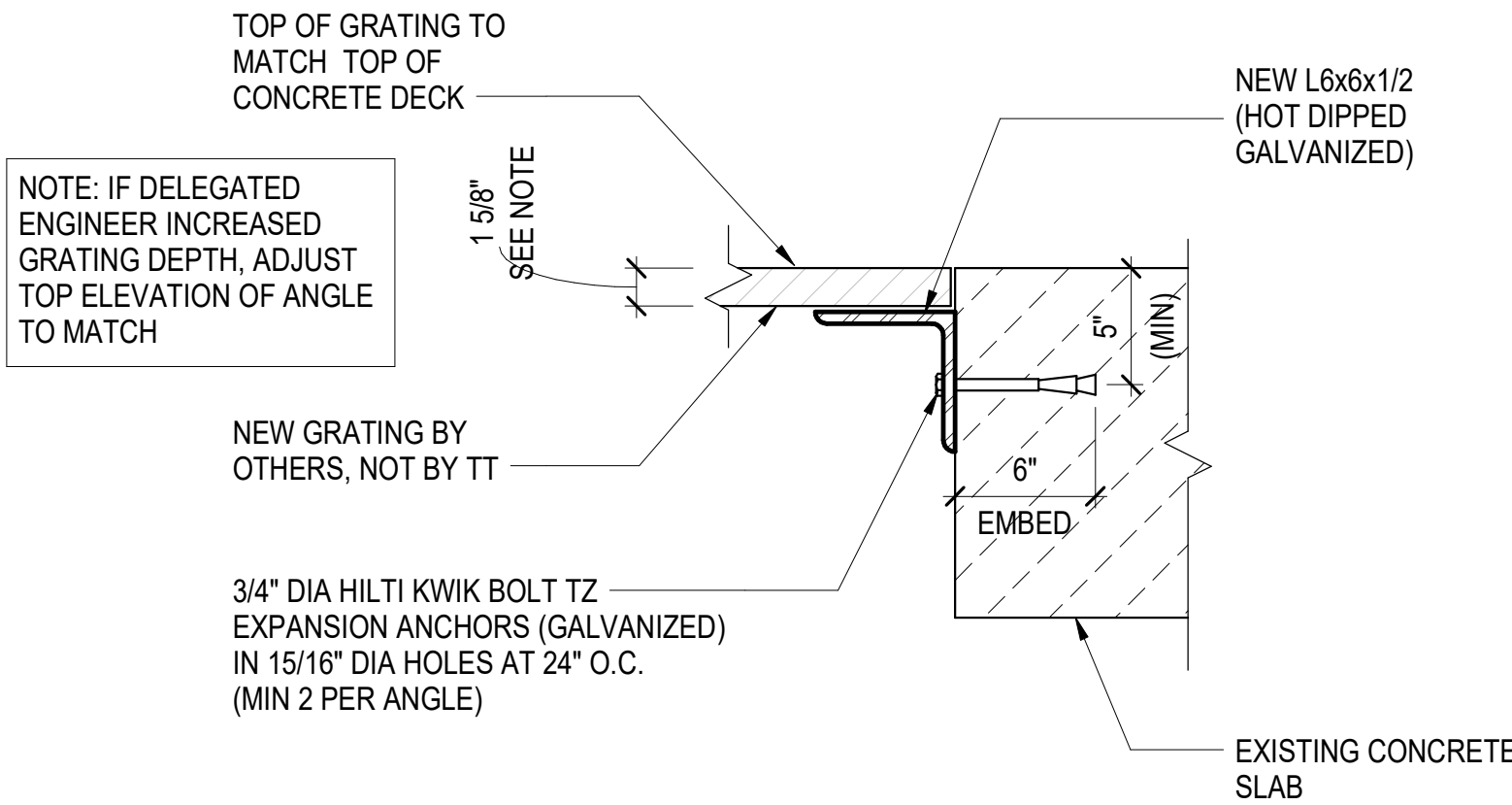
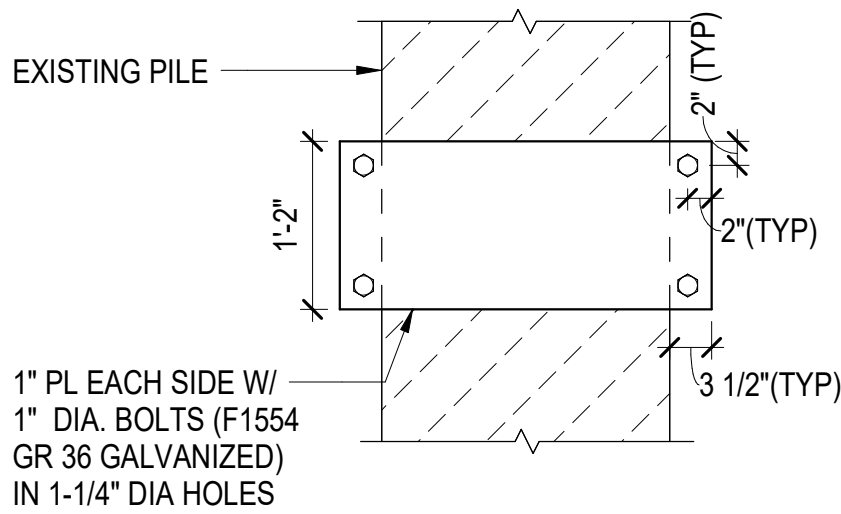


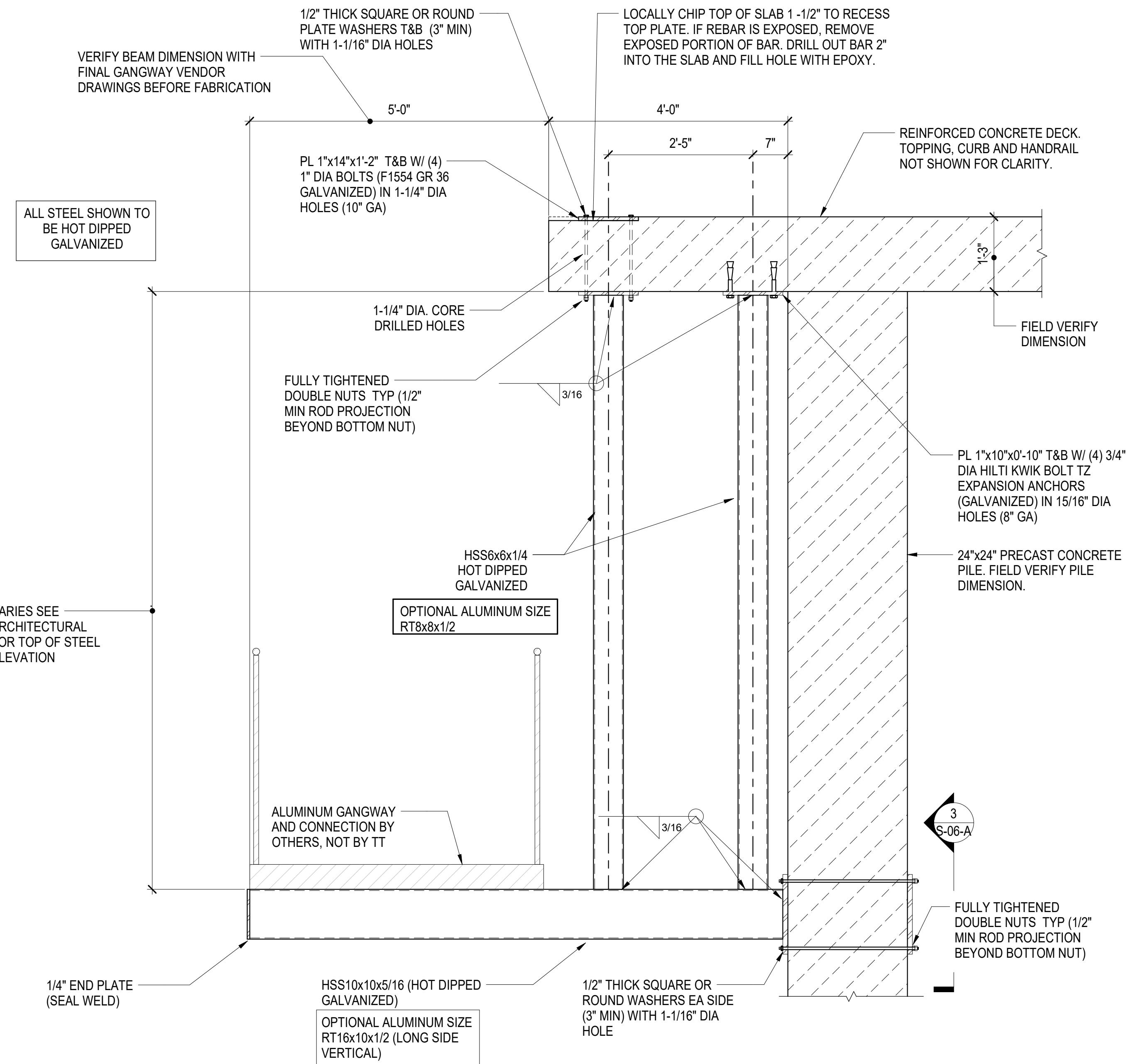
1 PARTIAL PLAN - GANGWAY  
SCALE: 1/8" = 1'-0"



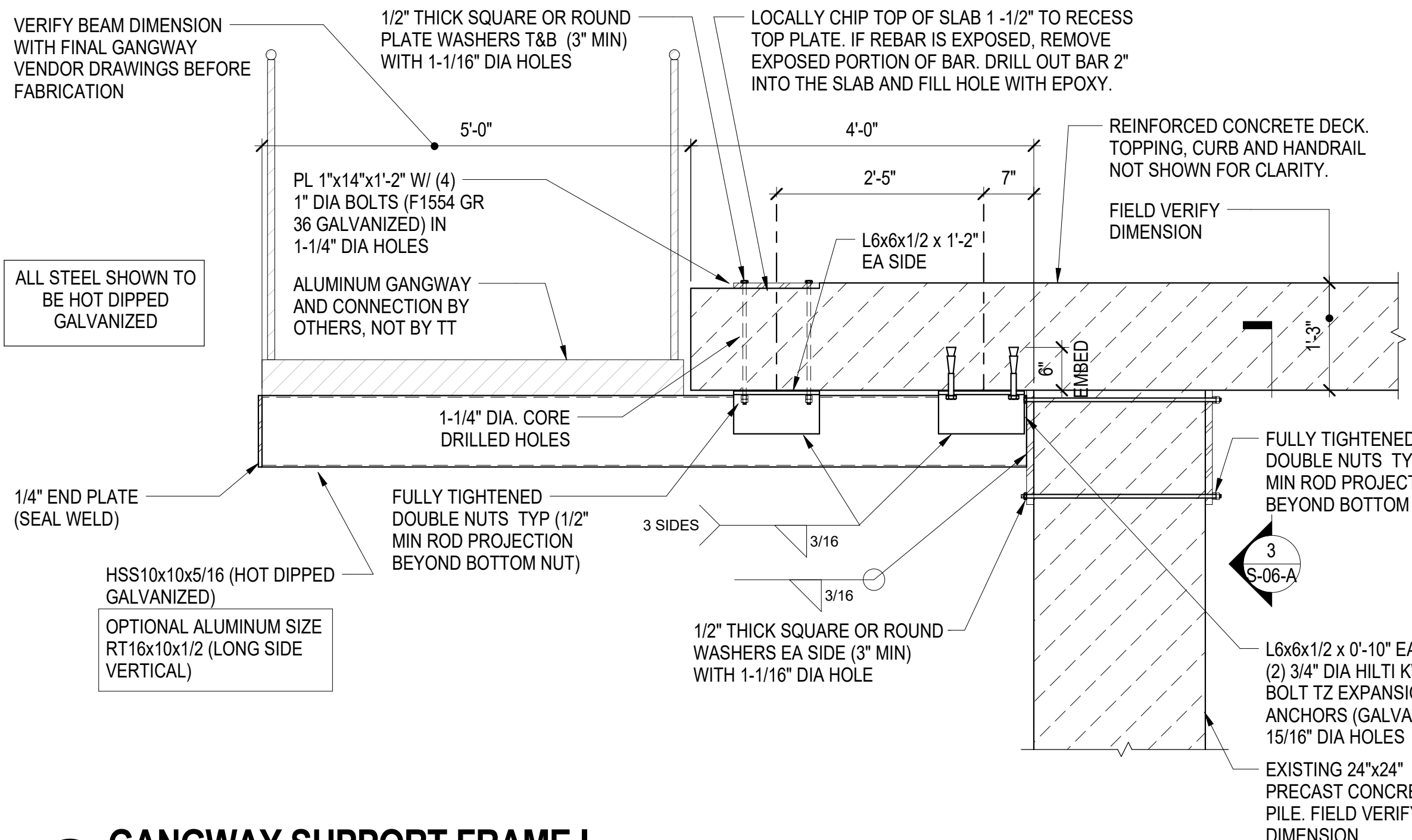
2 ANGLE CONNECTION DETAIL  
SCALE: 1 1/2" = 1'-0"



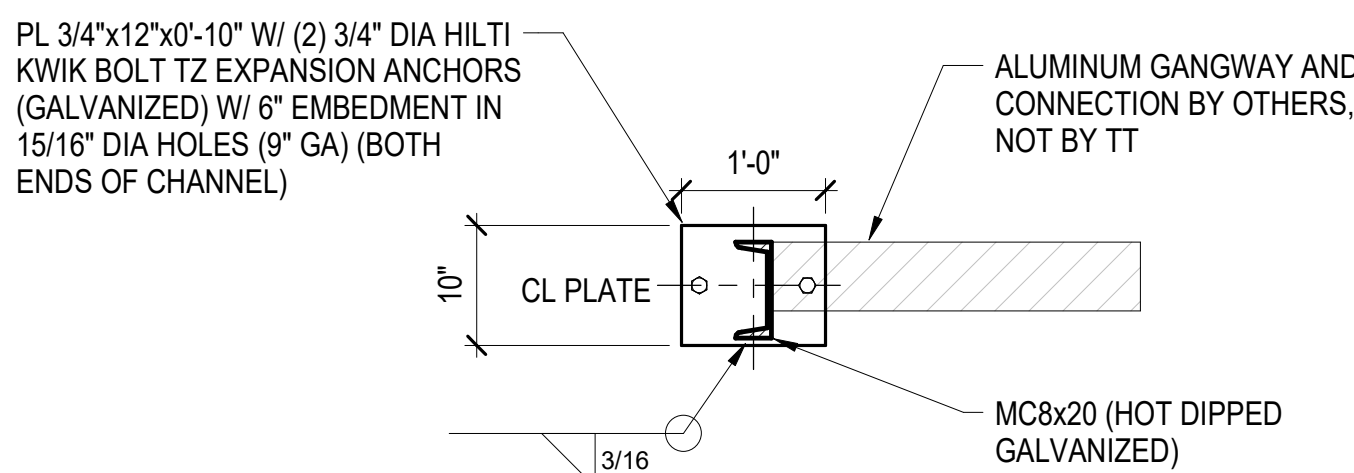
3 PLATE DETAIL  
SCALE: 3/4" = 1'-0"



4 GANGWAY SUPPORT FRAME II  
SCALE: 3/4" = 1'-0"



5 GANGWAY SUPPORT FRAME I  
SCALE: 3/4" = 1'-0"



6 GANGWAY SUPPORT CHANNEL  
SCALE: 3/4" = 1'-0"

## GENERAL NOTES

- GENERAL CONDITIONS**
- GR-1 THE CONTRACTOR IS RESPONSIBLE FOR COORDINATION OF THE STRUCTURAL WORK WITH THE ARCHITECTURAL, CIVIL, MEP CONTRACT DOCUMENTS, AS WELL AS ANY OTHER APPLICABLE TRADES.
  - GR-2 THE CONTRACTOR IS RESPONSIBLE FOR THE STABILITY OF THE STRUCTURE UNTIL THE CONSTRUCTION OF THE STRUCTURE REACHES ITS FINAL CONDITION
  - GR-3 THE CONTRACTOR SHALL VERIFY ALL EXISTING DIMENSIONS AND CONDITIONS AND COORDINATE WITH THE STRUCTURAL DRAWINGS, ARCHITECTURAL DRAWINGS, DRAWINGS FROM OTHER CONSULTANTS, PROJECT SHOP DRAWINGS AND FIELD CONDITIONS.
  - GR-4 APPLY DETAILS, SECTIONS, AND NOTES ON THE DRAWINGS WHERE CONDITIONS ARE SIMILAR TO THOSE INDICATED BY DETAIL, DETAIL TITLE OR NOTE.
  - GR-5 CENTERLINES OF FRAMING MEMBERS COINCIDE WITH COLUMN CENTERLINES, UON.
  - GR-6 THE CONTRACTOR SHALL VERIFY THAT CONSTRUCTION LOADS DO NOT EXCEED THE CAPACITY OF THE STRUCTURE AT THE TIME THE LOAD IS APPLIED.

CODES AND DESIGN CRITERIA	
CD-1	PERFORM ALL CONSTRUCTION IN CONFORMANCE WITH THE BUILDING AND DESIGN CODES REFERENCED WITHIN THESE DOCUMENTS. THE PROJECT DOCUMENTS REFER TO THE FOLLOWING CODES AND STANDARDS, UON: FLORIDA BUILDING CODE, BUILDING (6TH EDITION) 2014
CD-2	STRUCTURAL CONCRETE: "BUILDING CODE REQUIREMENTS FOR STRUCTURAL CONCRETE" THE AMERICAN CONCRETE INSTITUTE (ACI 318)
CD-3	STRUCTURAL STEEL: "SPECIFICATION FOR STRUCTURAL STEEL BUILDINGS", (AISC 360) CONFORMING TO THE PROVISIONS OF LOAD RESISTANCE DESIGN BY THE AMERICAN INSTITUTE OF STEEL CONSTRUCTION (AISC-LRFD)
CD-4	LIVE LOADS: 100 LBS./SQ. FT.
CD-5	DEAD LOADS: 15 LBS./SQ. FT.
CD-6	GANGWAY OCCUPANCY CATEGORY II
CD-7	WIND LOAD DESIGN DATA BASIC WIND SPEED, V 145 MPH
CD-8	FLOOD LOADS D SEE ASCE 24
CD-9	SERVICEABILITY LIVE LOAD DEFLECTION IS LESS THAN L/360

- DELEGATED DESIGN ITEMS**
- DI-1 THE CONTRACTOR SHALL EMPLOY OR RETAIN A PROFESSIONAL ENGINEER LICENSED IN THE STATE OF FLORIDA TO DESIGN AND DETAIL DELEGATED DESIGN ITEMS TO MEET THE PERFORMANCE AND DESIGN CRITERIA ESTABLISHED AS PART OF THE BASE BUILDING STRUCTURE INDICATED IN THE CONTRACT DOCUMENTS INCLUDING BUT NOT LIMITED TO: GANGWAY SYSTEM

**STRUCTURAL STEEL**  
SS-1 STEEL MATERIALS SHALL CONFORM TO THE FOLLOWING MINIMUM REQUIREMENTS UNLESS OTHERWISE NOTED ON THE CONTRACT DOCS:

ROLLED SHAPES AND CHANNELS:	ASTM A572 OR A992, MIN YIELD STRENGTH 50 KSI
ANGLES:	ASTM A36 MIN YIELD STRENGTH 36 KSI
HOLLOW STRUCTURAL SECTIONS:	ASTM A500 GRADE B, MIN YIELD STRENGTH 46 KSI FOR RECTANGULAR HSS
CONNECTION MATERIAL SHALL CONFORM TO THE FOLLOWING MINIMUM REQUIREMENTS OR AS NEEDED FOR CONNECTION DESIGN:	
ANGLES:	ASTM A36
PLATES:	ASTM A36, MIN YIELD STRENGTH 36 KSI OR
BOLTS:	ASTM A325 OR A490
NUTS:	ASTM A563
WASHERS:	ASTM F436
ANCHOR RODS:	ASTM F1554 GRADE 55 WITH WELDABILITY SUPPLEMENT S1
WELD ELECTRODES:	E70XX

**STRUCTURAL ALUMINUM**  
SA-1 ALUMINUM MATERIALS SHALL CONFORM TO THE FOLLOWING MINIMUM REQUIREMENTS UNLESS OTHERWISE NOTED ON THE CONTRACT DOCUMENTS:

- TUBE: 6061-T6
- SA-2 CONNECTION MATERIAL SHALL CONFORM TO THE FOLLOWING MINIMUM REQUIREMENTS OR AS NEEDED FOR CONNECTION DESIGN:
  - PLATES: 6061-T6
  - BOLTS: AISI 316 STAINLESS STEEL "CW"
  - NUTS: AISI 316 STAINLESS STEEL
  - WASHERS: AISI 316 STAINLESS STEEL
  - WELD FILLER: 5356

ISSUED FOR CONSTRUCTION

ASD | SKY

ROGERSPARTNERS

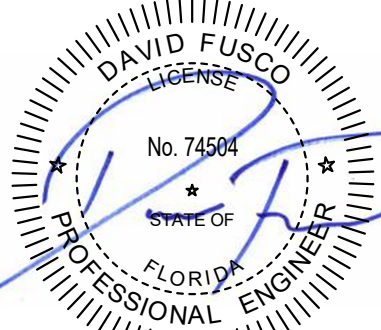
Architects+Urban Designers  
100 Roscoe Street  
New York, New York 10013  
212-300-7570  
www.rogerspartners.com

WORKSHOP

KEN SMITH LANDSCAPE ARCHITECT  
450 West 21st Street, 5th Fl., New York, NY 10011  
212-791-5595  
ken@smithworkshop.com

NO.	REVISIONS:	DATE:
1	SEAWALL AND PIER DECK	5/2/17
2	DEADMAN AND MISC.	5/19/17
3	ASI 01 - GRADING + PUMP STATION	7/31/17
4	ASI 18 - WET CLASSROOM GANGWAY	8/07/19

Thornton Tomasetti  
Thornton Tomasetti, Inc.  
400 N Ashley Drive, Suite 2180  
Tampa, FL 33602-4303  
P 813.906.1290 • F 813.903.9301  
www.thorntontomasetti.com • PE: G4P7019



THIS ITEM HAS BEEN DIGITALLY SIGNED AND SEALED BY DAVID FUSCO, PE ON 08-08-2019 USING A DIGITAL SIGNATURE PRINTED COPIES OF THIS DOCUMENT ARE NOT CONSIDERED SIGNED AND SEALED AND THE SHA AUTHENTICATION CODE MUST BE VERIFIED ON ANY ELECTRONIC COPIES

THE NEW ST PETERSBURG PIER  
CITY OF ST PETERSBURG  
CITY PROJECT NO. 09227-019

ENGINEERING AND CAPITAL IMPROVEMENTS DEPARTMENT  
CITY OF ST. PETERSBURG  
APPROVED BY:

100% CONSTRUCTION DOCUMENTS

WET CLASSROOM GANGWAY SUPPORT STRUCTURE

ISSUE DATE: 08/02/2019

DRAWN BY: MB CHECKED BY: SZ

COPY NUMBER: 11063-

S-06-A