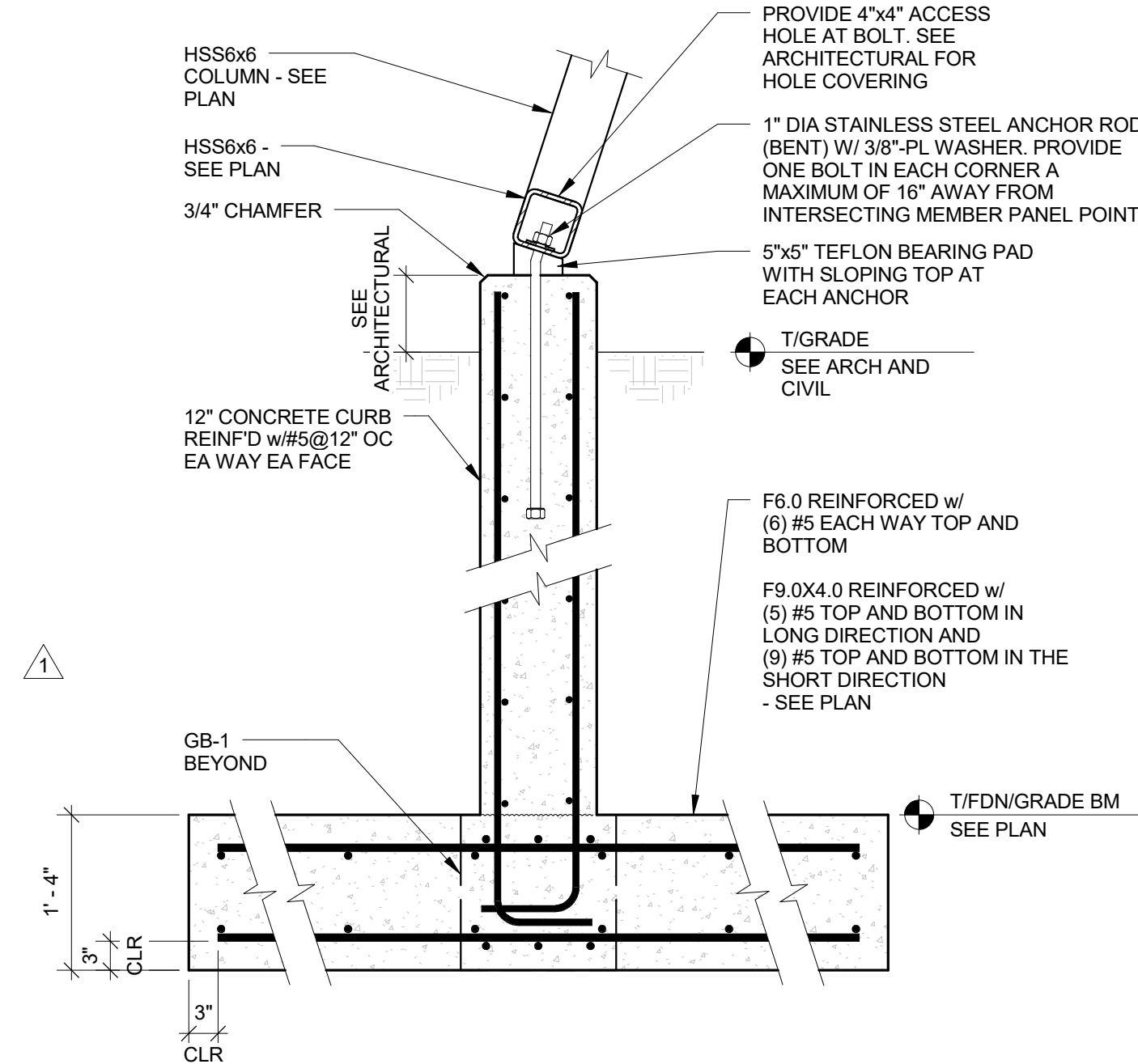
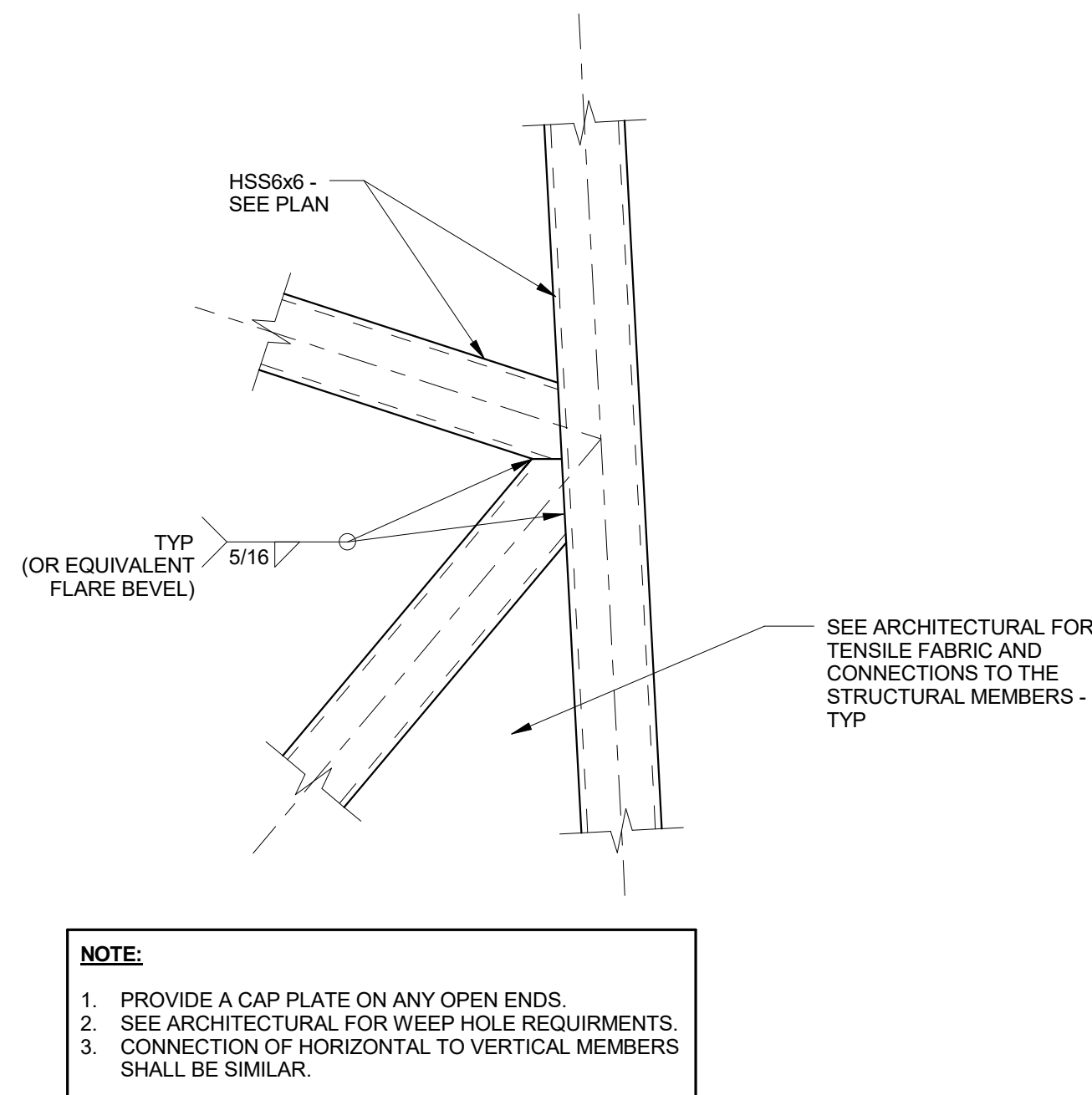


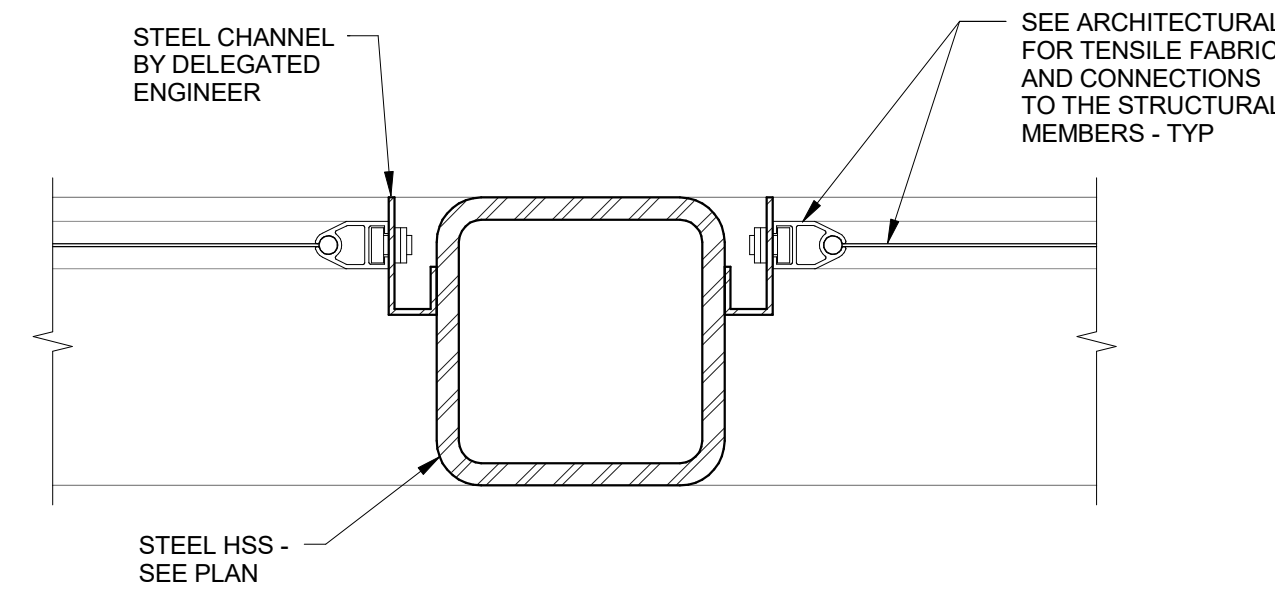
1 HSS CONNECTION AT CURB
S1.63 3/4" = 1'-0"



2 HSS CONNECTION AT FOUNDATION
S1.63 3/4" = 1'-0"



3 TYPICAL HSS CONNECTION DETAIL
S1.63 1" = 1'-0"



4 SHADE STRUCTURE - FABRIC ATTACHMENT
S1.63 3" = 1'-0"

TENSION DEVELOPMENT AND LAP SPLICE LENGTHS (INCHES)

BAR SIZE	LAP CLASS	f _c = 4000 psi	
		TOP BARS	OTHER BARS
#3	B	25	19
#4	B	33	25
#5	B	41	31
#6	B	49	37
#7	B	71	54
#8	B	81	62
#9	B	91	70
#10	B	102	79
#11	B	114	87

- NOTES:
1. VALUES SHALL BE INCREASED BY 1.5 IN CASES OF COVER LESS THAN d_b AND/OR SPACING IS LESS THAN $2d_b$.
 2. REFER TO TOP BARS AS BARS PLACED ON THE TOP FACE OF BEAMS AND SLABS.

TO THE BEST OF THE STRUCTURAL ENGINEER'S KNOWLEDGE, THE PLANS AND SPECIFICATIONS COMPLY WITH THE APPLICABLE MINIMUM CODES AS DETERMINED BY LOCAL AUTHORITY IN ACCORDANCE WITH CHAPTER 553, FLORIDA STATUTES.