

FLOOR FRAMING PLAN NOTES

1. FOR DIMENSIONS NOT INDICATED ON THIS DRAWING REFER TO ARCHITECTURAL DRAWINGS.
2. FOR BALANCE OF INFORMATION NOT INDICATED IN STRUCTURAL DRAWINGS, SEE ARCHITECTURAL DRAWINGS.
3. REFER TO NOTES AND SPECIFICATIONS FOR ADDITIONAL SLAB AND BEAM REQUIREMENTS.
4. CONTRACTOR IS RESPONSIBLE FOR THE MEANS AND METHODS OF ERECTION AND ENGINEERING OF ANY TEMPORARY SUPPORT OR LOADING CONDITIONS. CONTRACTOR TO SUBMIT ERECTION SEQUENCE PLAN FOR APPROVAL. DESIGN IS BASED ON SHORED CONSTRUCTION.
5. CANTILEVERED SLABS MUST BE SHORED UNTIL 28 DAY COMPRESSIVE STRENGTH IS ACHIEVED.
6. GC TO COORDINATE OPENING SIZES AND/OR PENETRATIONS WITH MEP AND ARCHITECTURAL DRAWINGS.
7. REFER TO ARCHITECTURAL DWGS/SPECS FOR ADDITIONAL SLAB/EXPOSED CONCRETE FINISH REQUIREMENTS.
8. REFER TO ARCHITECTURAL DRAWINGS FOR CONTROL JOINTS WITHIN TOPPING SLABS.
9. REFER TO ARCHITECTURAL DRAWINGS FOR CONTROL JOINTS WITHIN ALL EXPOSED CONCRETE WALLS.
10. PENETRATIONS SHALL NOT MODIFY PT CABLE PROFILE.

FRAMING PLAN TAG LEGEND

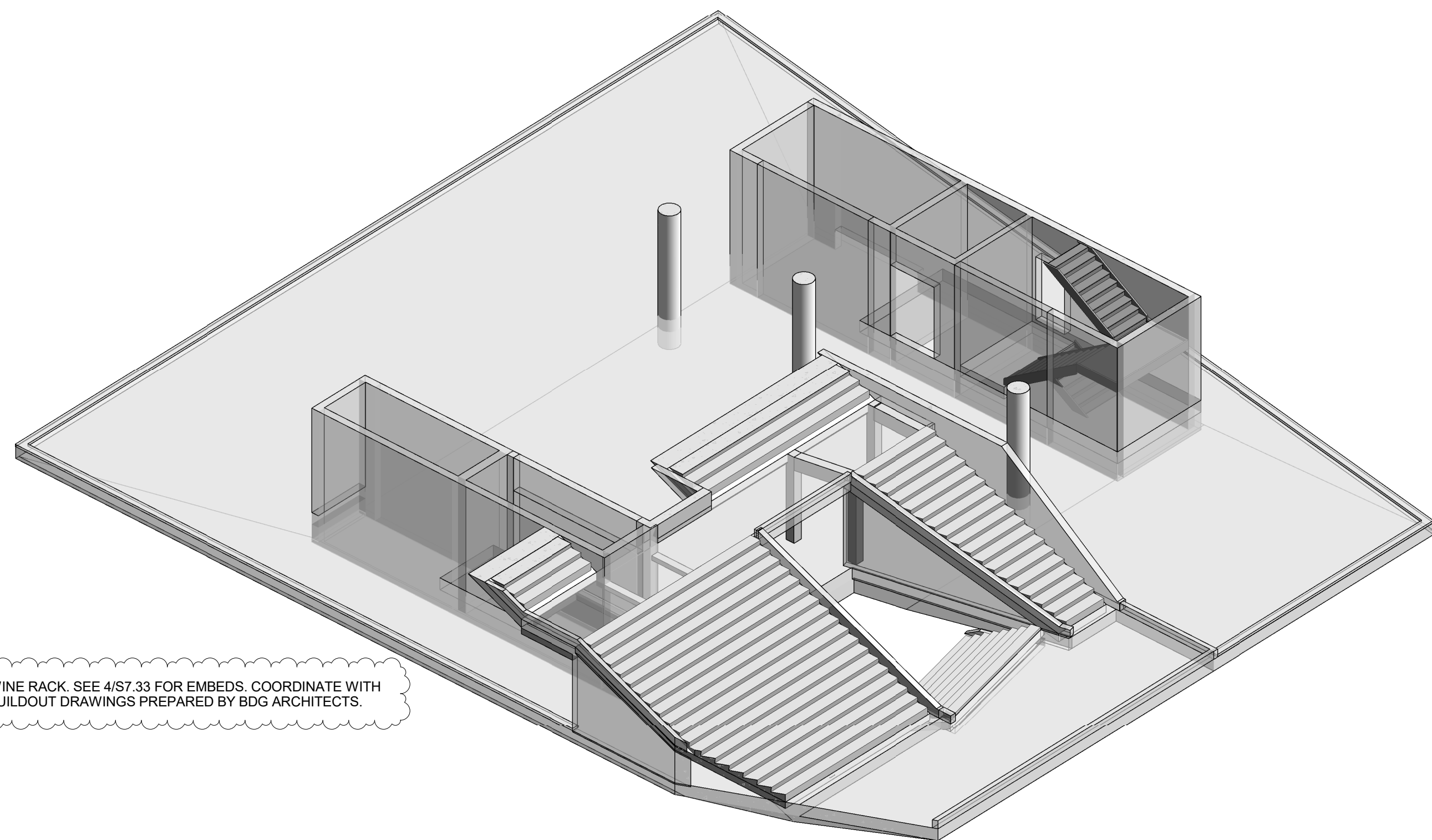
- | | |
|-------|---|
| CW-X | INDICATES CIP CONC CORE WALL AND THICKNESS (IN). REF S7.11 FOR REINFORCEMENT SCHEDULE AND INFORMATION. REF GENERAL NOTES FOR REQUIRED CONC STRENGTH. |
| BW-X | INDICATES CIP CONC BEARING WALL WALL AND THICKNESS (IN). REF S7.11 FOR REINFORCEMENT SCHEDULE AND INFORMATION. REF GENERAL NOTES FOR REQUIRED CONC STRENGTH. |
| C-X | INDICATES CIP CONC CURB THICKNESS (IN). REF TYP DETAIL FOR REINFORCEMENT INFORMATION. REF GENERAL NOTES FOR REQUIRED CONC STRENGTH. REF WALL SCHEDULE FOR CURB REINF. |
| BX-X | INDICATES CIP BEAM. REFER S7.13 FOR BEAM DIMENSIONS AND REINFORCEMENT. |
| SS-X | INDICATES CIP STAIR RAMP. REFER S7.13 FOR REINFORCEMENT INFORMATION. |
| MS-X | INDICATES MILD REINFORCED CIP SLAB. REF S7.13 FOR REINFORCEMENT INFORMATION. |
| MSR-X | INDICATES STUD RAIL IN MILD REINFORCED SLAB. REF SCHEDULE AND TYP DETAIL FOR ADDL INFORMATION. |

FRAMING PLAN LEGEND

- | | |
|-----|---|
| --- | INDICATES TYP. WALL BELOW |
| --- | INDICATES CAST-IN-PLACE CONCRETE WALL |
| --- | INDICATES CAST-IN-PLACE CONCRETE WALL WITH 2\" |
| --- | (ON FOUNDATION PLAN ONLY) INDICATES SHEAR WALL BOUNDARY ZONE FOR AT CONCRETE CORE WALLS AT LEVEL 1 ONLY. EXTENTS INDICATED ON PLAN. REF TYP WALL DETAILS FOR REINF INFORMATION. |
| --- | INDICATES LIGHT GAUGE METAL STUD WALL BY DELEGATED ENGINEER |
| --- | INDICATES CAST-IN-PLACE CONCRETE CURB. |
| --- | INDICATES DIRECTION PRIMARY REINFORCEMENT SPAN IN SLAB |
| T | INDICATES GALV. STEEL EMBEDMENT PLATE. REFER TO DETAILS AND SECTIONS FOR INFO. |

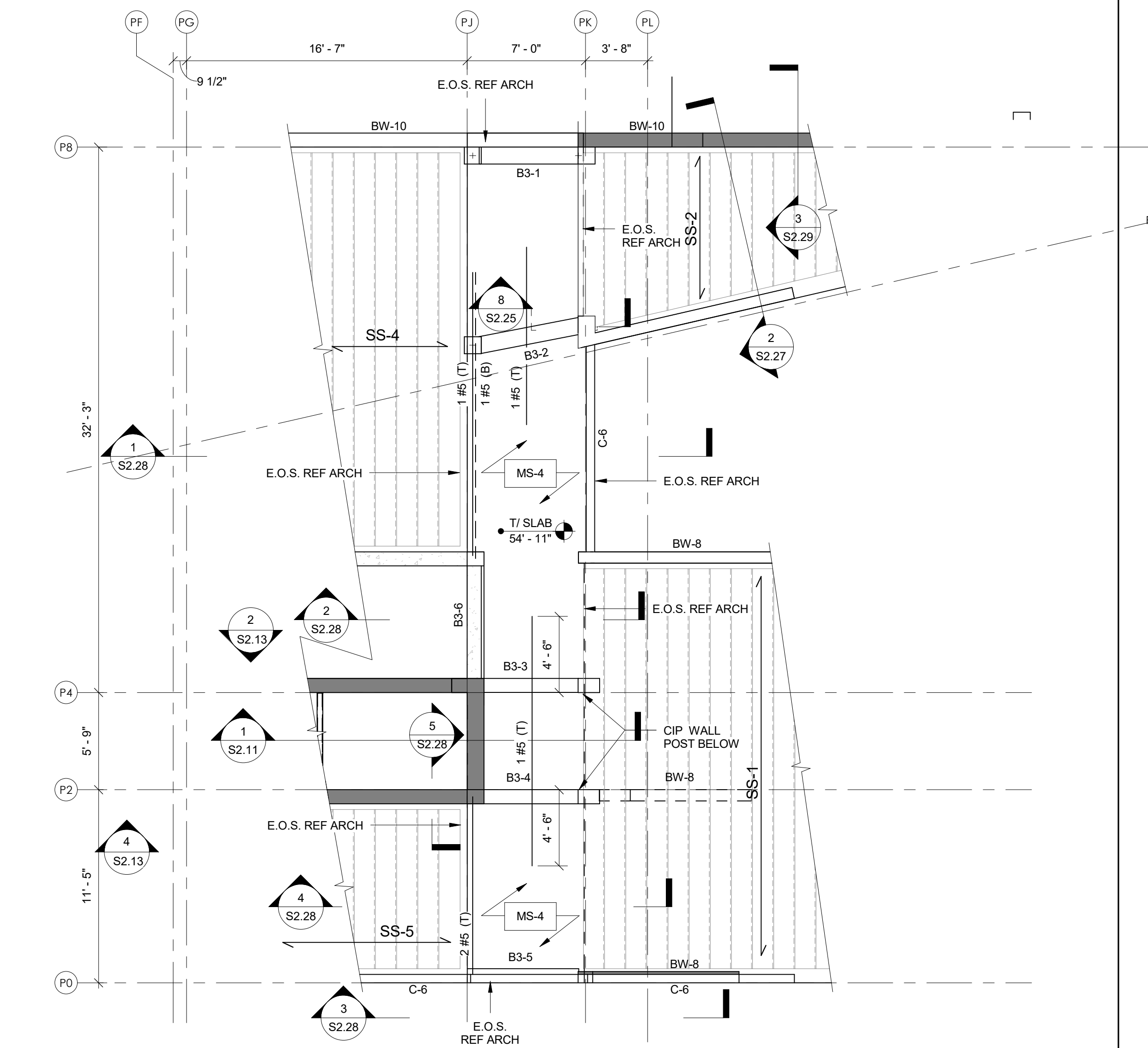
RESTAURANT PLAN KEYNOTES:

- 1 CIP SLAB, REFER CONCRETE SLAB SCHEDULE ON S7.13 FOR REINFORCING INFORMATION.
- 2 MECHANICAL SHAFT OPENING, REFER MEP DRAWINGS FOR ADDL INFORMATION.
- 3 SLAB TAPER RIDGE, REFER VSL PLANS FOR LOCATIONS AND EXTENTS.
- 4 LOCATION OF TRENCH DRAIN IN THE TOPPING SLAB, REF. PLUMBING DRAWINGS FOR LOCATION AND EXTENTS.
- 5 ELEVATOR BEAM, REFER ELEVATOR SHOP DRAWINGS FOR SIZES AND LOCATIONS.
- 6 36\"
- 7 CONCRETE WALL PROJECTION TO END ABOVE DINING SLAB. SEE ARCH.
- 8 LIGHT GAGE METAL STUD INFILL WALL (BY DELEGATED ENGINEER). REFER ARCH DRAWINGS FOR SHEATHING TYPE AND FASTENERS. REF GENERAL NOTES FOR MINIMUM GAGE REQUIREMENTS.
- 9 PRE-ENGINEERED STAIR, REF ARCH.
- 10 DASHED LINE REPRESENTS 16\"
- 11 INDICATES LOCATION OF ADDITIONAL #4 U-BARS @ 12\"



2 LEVEL 04 - RESTAURANT - 3D ISOMETRIC

N.T.S.



3 LEVEL 04 - UPPER LANDING

3/16\"

NOTES:

1. REFER TO 2/S2.03 FOR NOTES

TO THE BEST OF THE STRUCTURAL ENGINEER'S KNOWLEDGE, THE PLANS AND SPECIFICATIONS COMPLY WITH THE APPLICABLE MINIMUM CODES AS DETERMINED BY LOCAL AUTHORITY IN ACCORDANCE WITH CHAPTER 553, FLORIDA STATUTES.

1 LEVEL 04 - RESTAURANT PLAN
S2.04/S2.04
3/16\"

ASD SKY ROGERS PARTNERS
Architects+Urban Designers
100 Reade Street
New York, New York 10013
212-300-7570
www.rogersarchitects.com

WORKSHOP
KEN SMITH LANDSCAPE ARCHITECT
450 West 21st Street, 5th Fl, New York, NY 10011
212-791-3395
ken@smithworkshop.com

NO.	REVISIONS:	DATE:
1	ISSUED FOR PERMIT - CONSTRUCTION	11/06/2019
2	ADDENDUM #1	11/13/2019
3		06/20/2017

TLC
4880 W. Kennedy Blvd.
Suite 250
Tampa, Florida 33609
Phone: 813-637-0110
Fax: 813-637-0013
www.tlc-engineers.com
©Copyright 2017 TLC Engineering for Architecture, Inc.
COA 15 TLC NO. 714128

THE NEW ST PETERSBURG PIER
CITY OF ST PETERSBURG
CITY PROJECT NO. 09227-019

ENGINEERING AND CAPITAL IMPROVEMENTS DEPARTMENT
CITY OF ST. PETERSBURG
APPROVED BY:

100% CONSTRUCTION DOCUMENTS
PIERHEAD - LEVEL 04 - RESTAURANT LEVEL

ISSUE DATE: 06-19-2017
DRAWN BY: DAF
CHECKED BY: TLC
COPIED BY: 11063-
S2.04