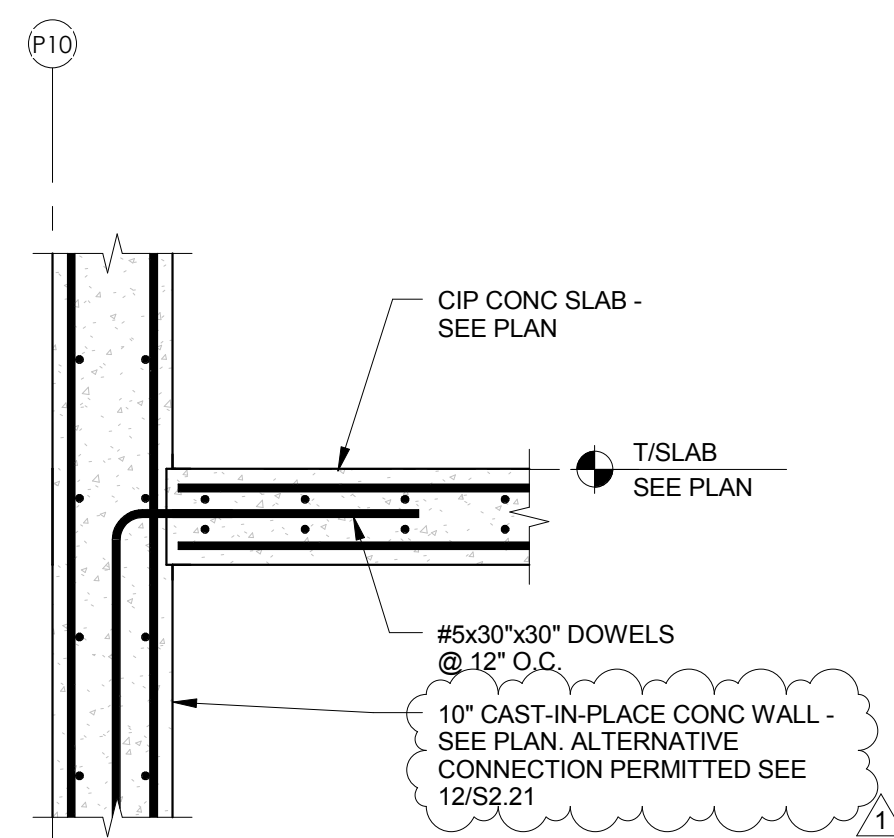
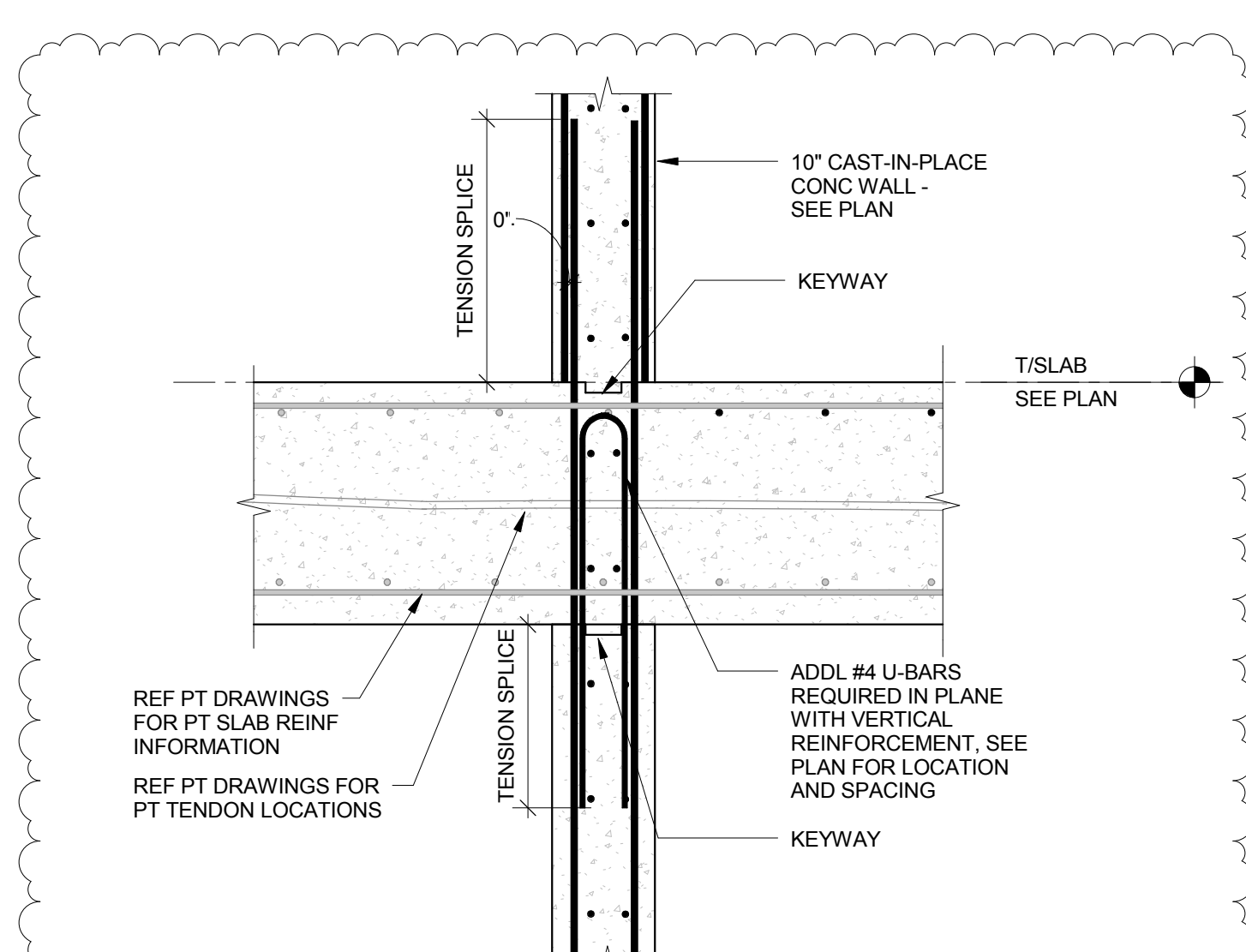


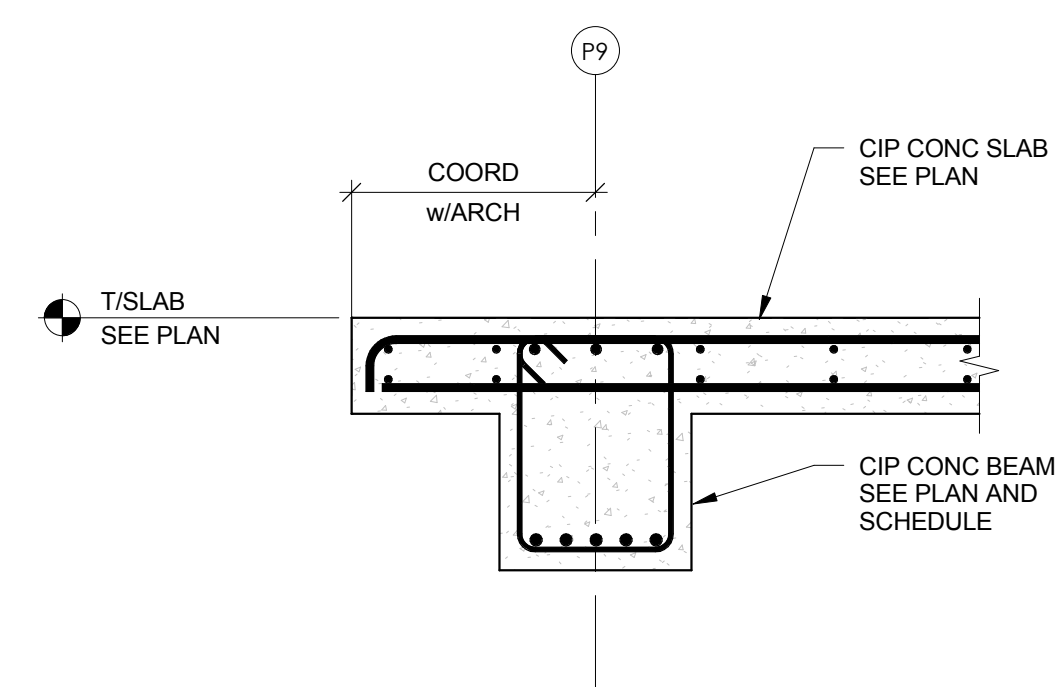
12 CIP SLAB AT CONC WALL - ALTERNATIVE  
3/4" = 1'-0"



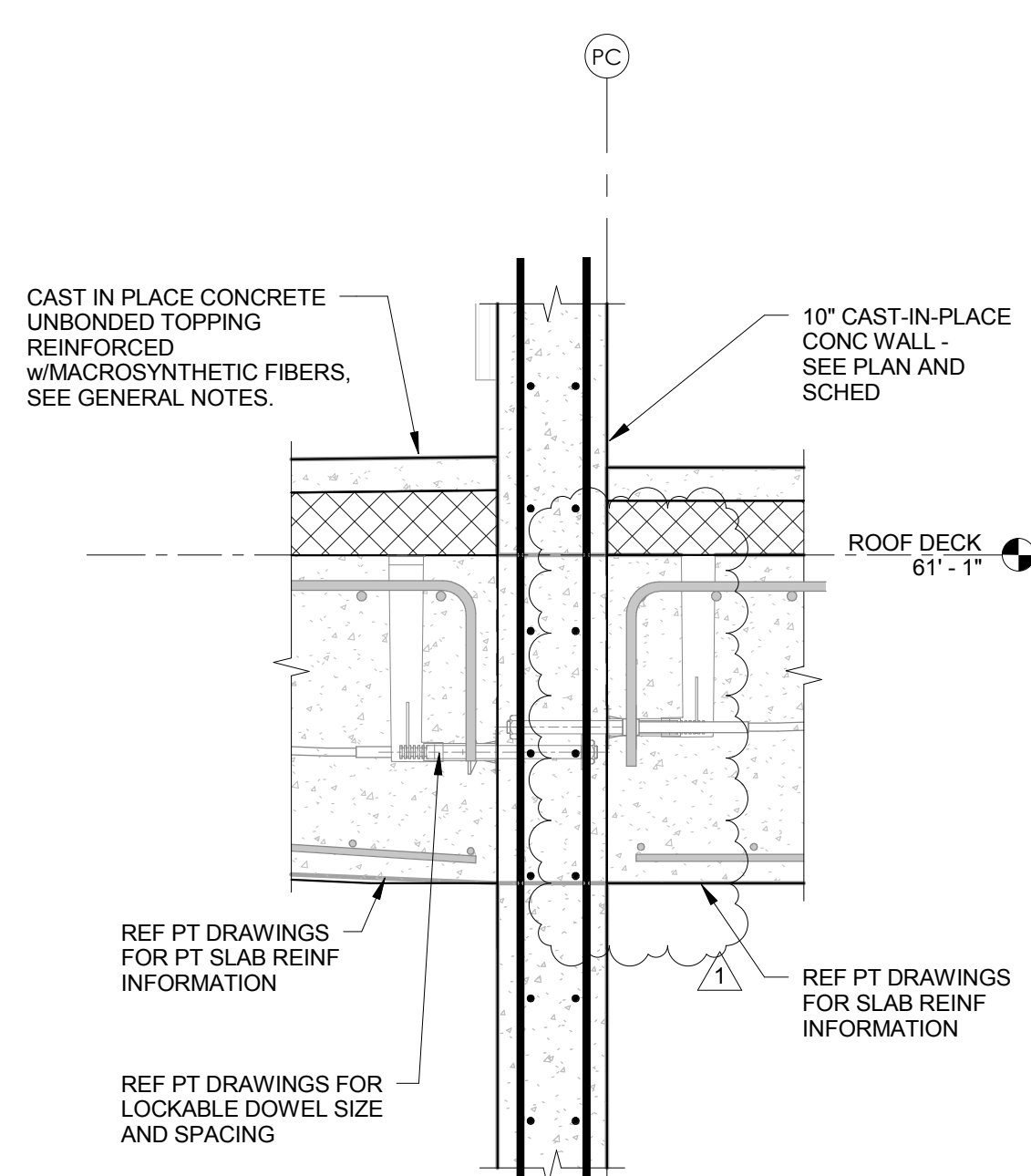
9 CIP SLAB AT CONC WALL  
3/4" = 1'-0"



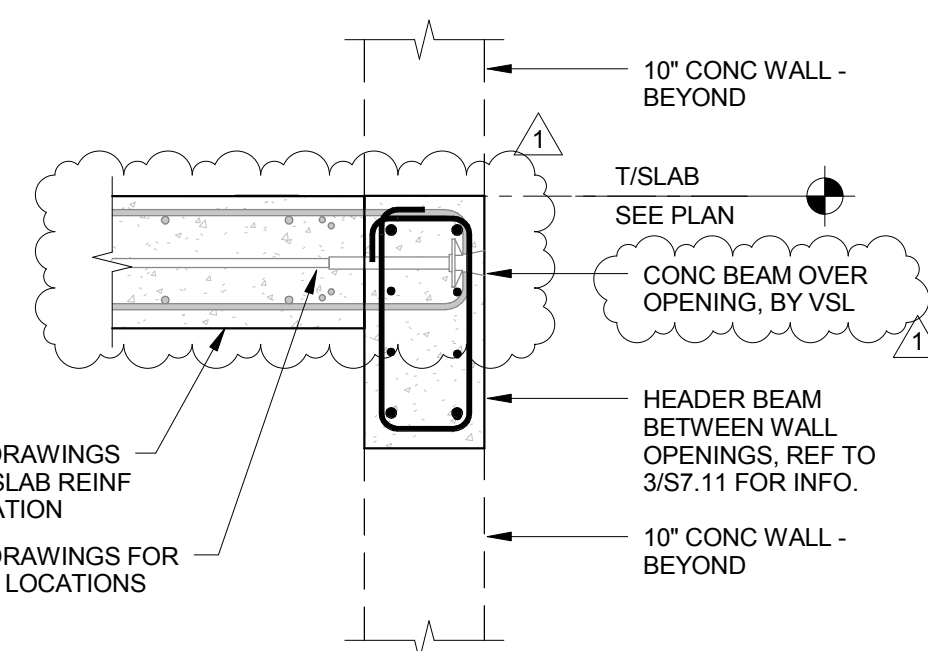
13 PT SLAB AT NORTH CORE CONCRETE WALL WITH ADDL REINF  
3/4" = 1'-0"



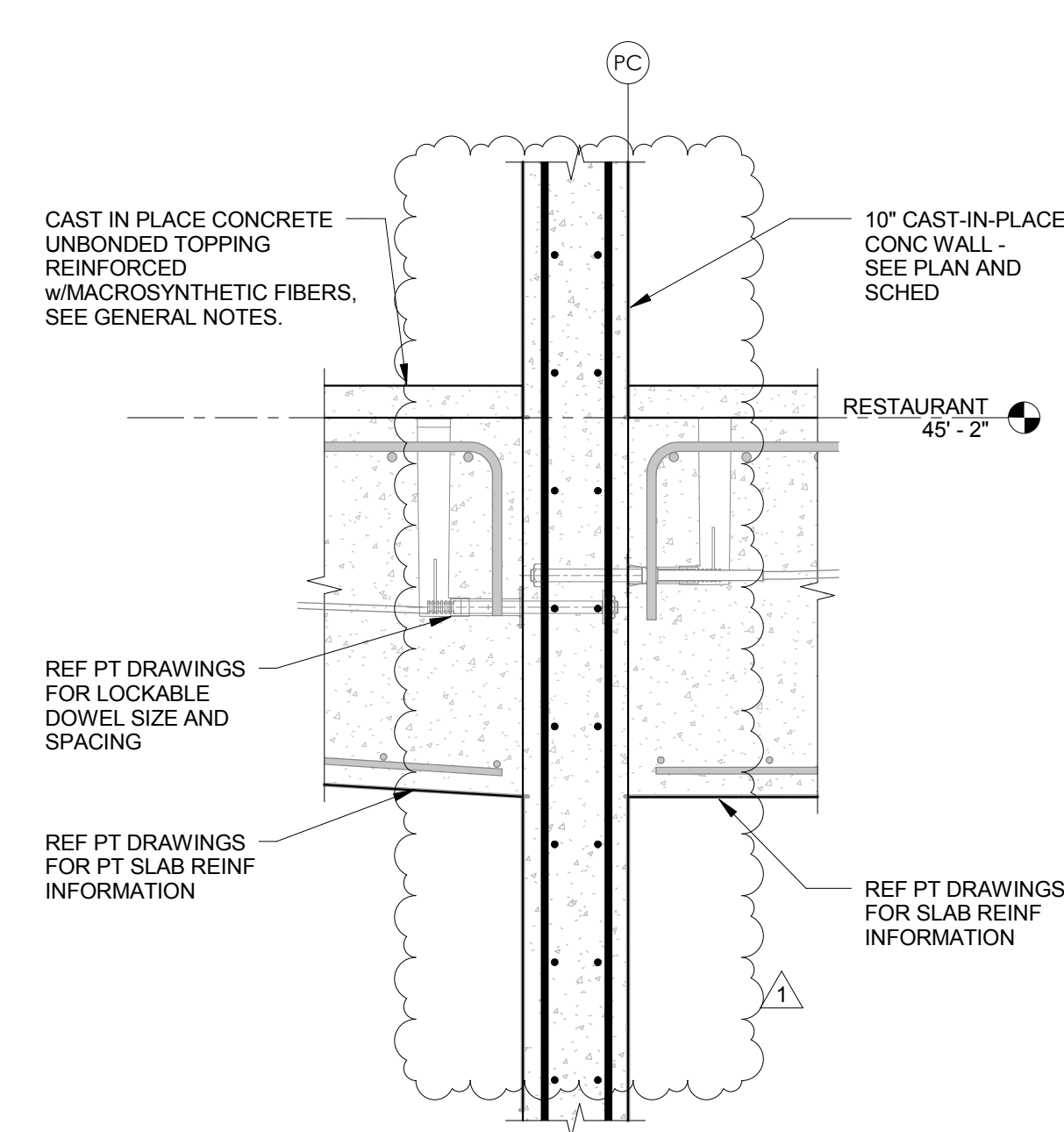
8 SECTION AT TERRACE/STORAGE LEVEL SLAB  
3/4" = 1'-0"



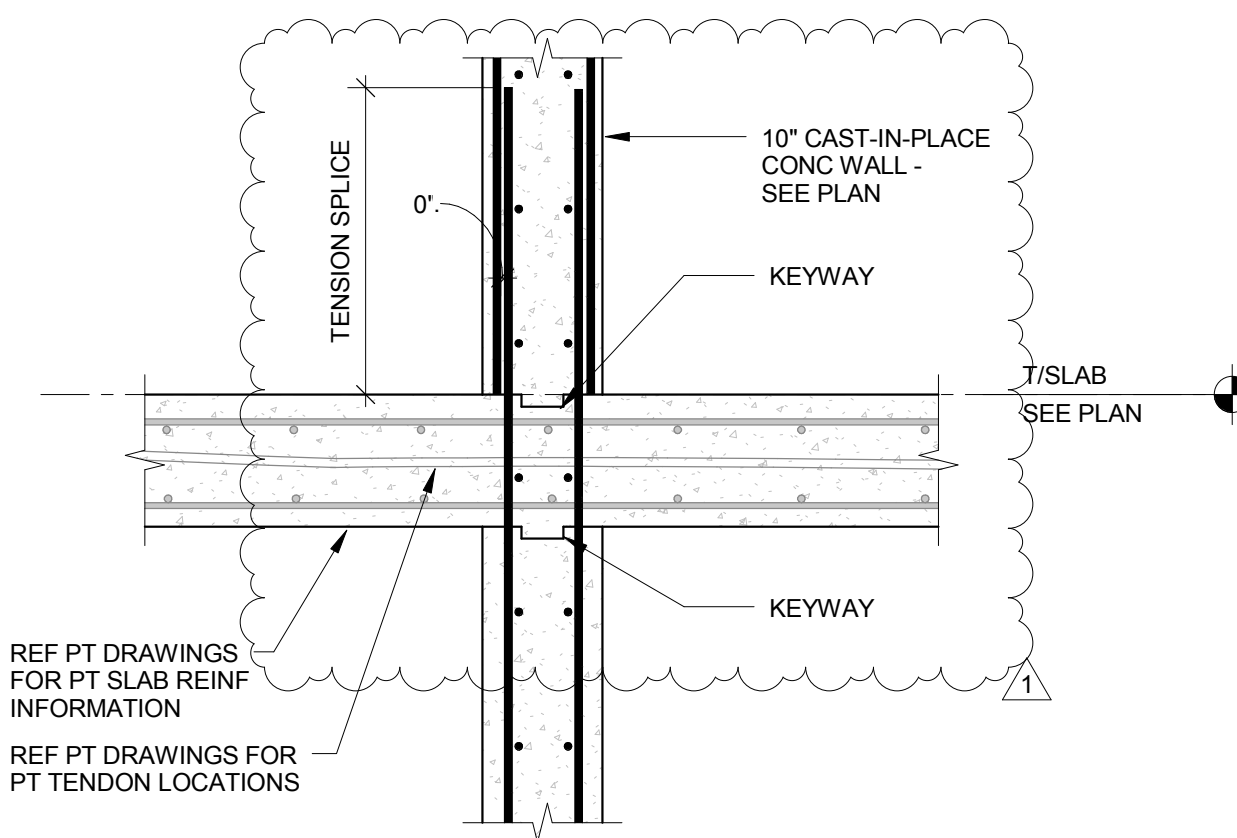
11 SECTION AT SOUTH CORE SHEARWALL  
3/4" = 1'-0"



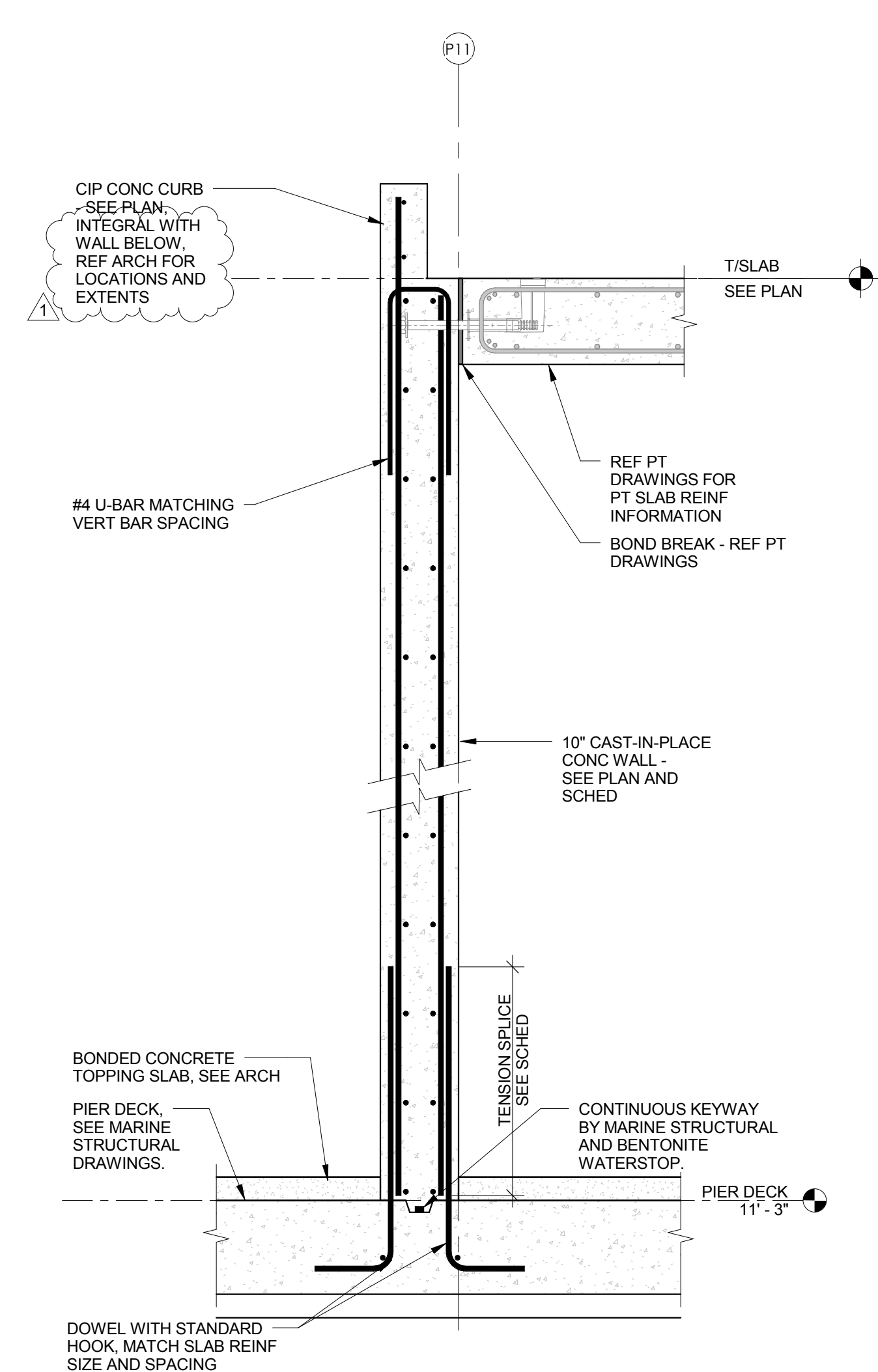
7 SECTION @ CORE WALL ELEVATOR OPENING  
3/4" = 1'-0"



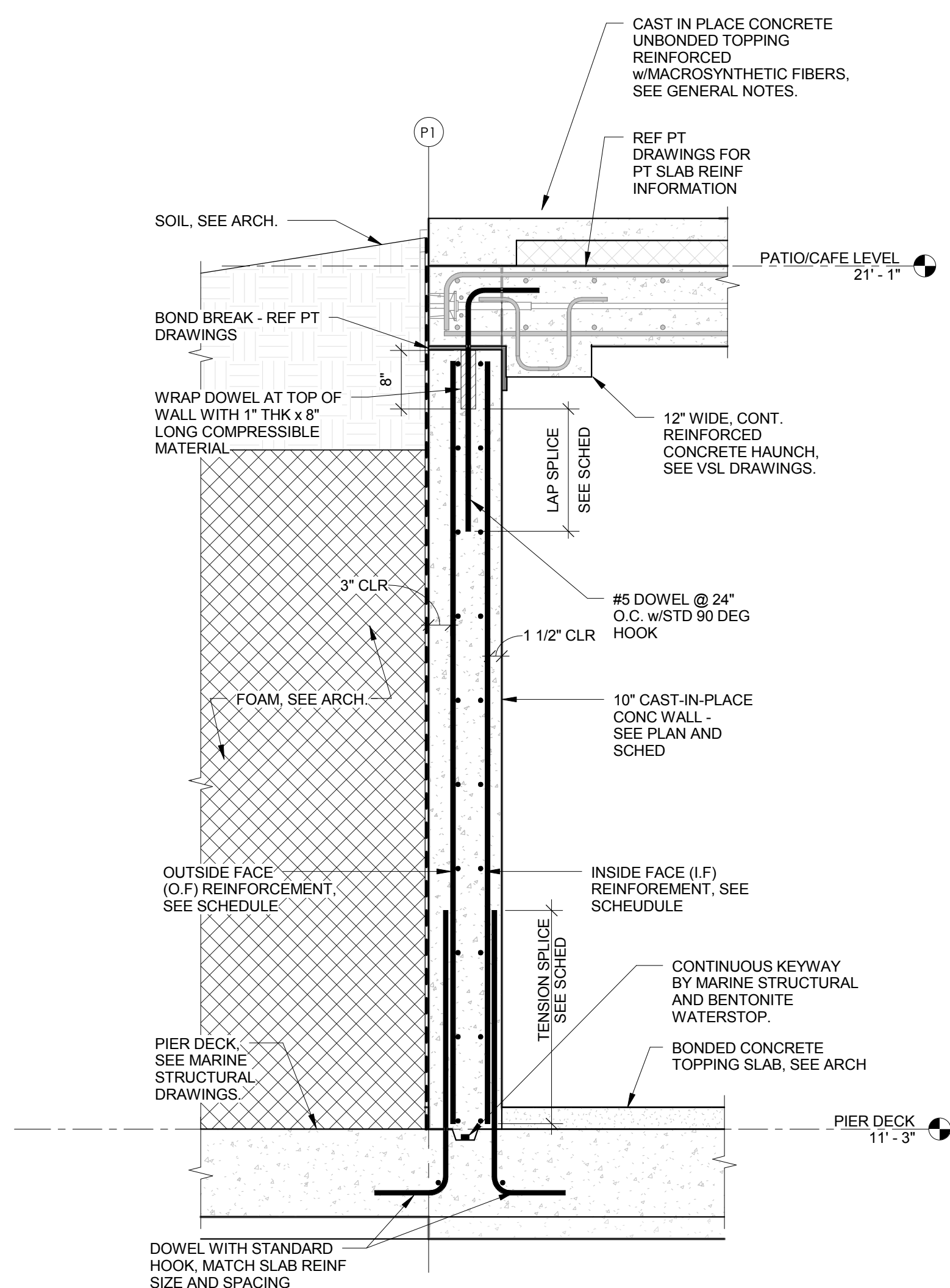
10 SECTION AT SOUTH CORE SHEARWALL 2  
3/4" = 1'-0"



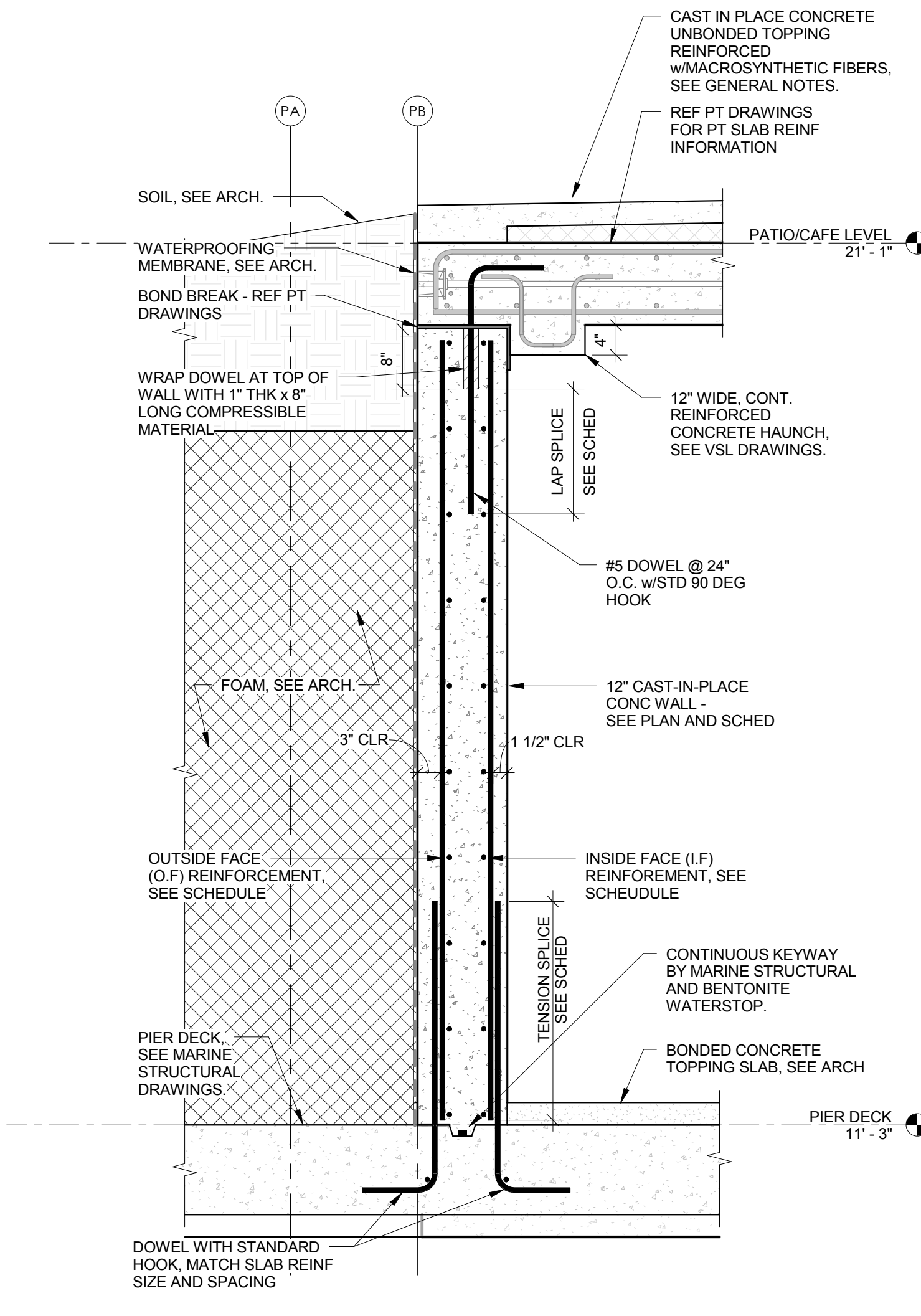
6 PT SLAB AT NORTH CORE CONCRETE WALL  
3/4" = 1'-0"



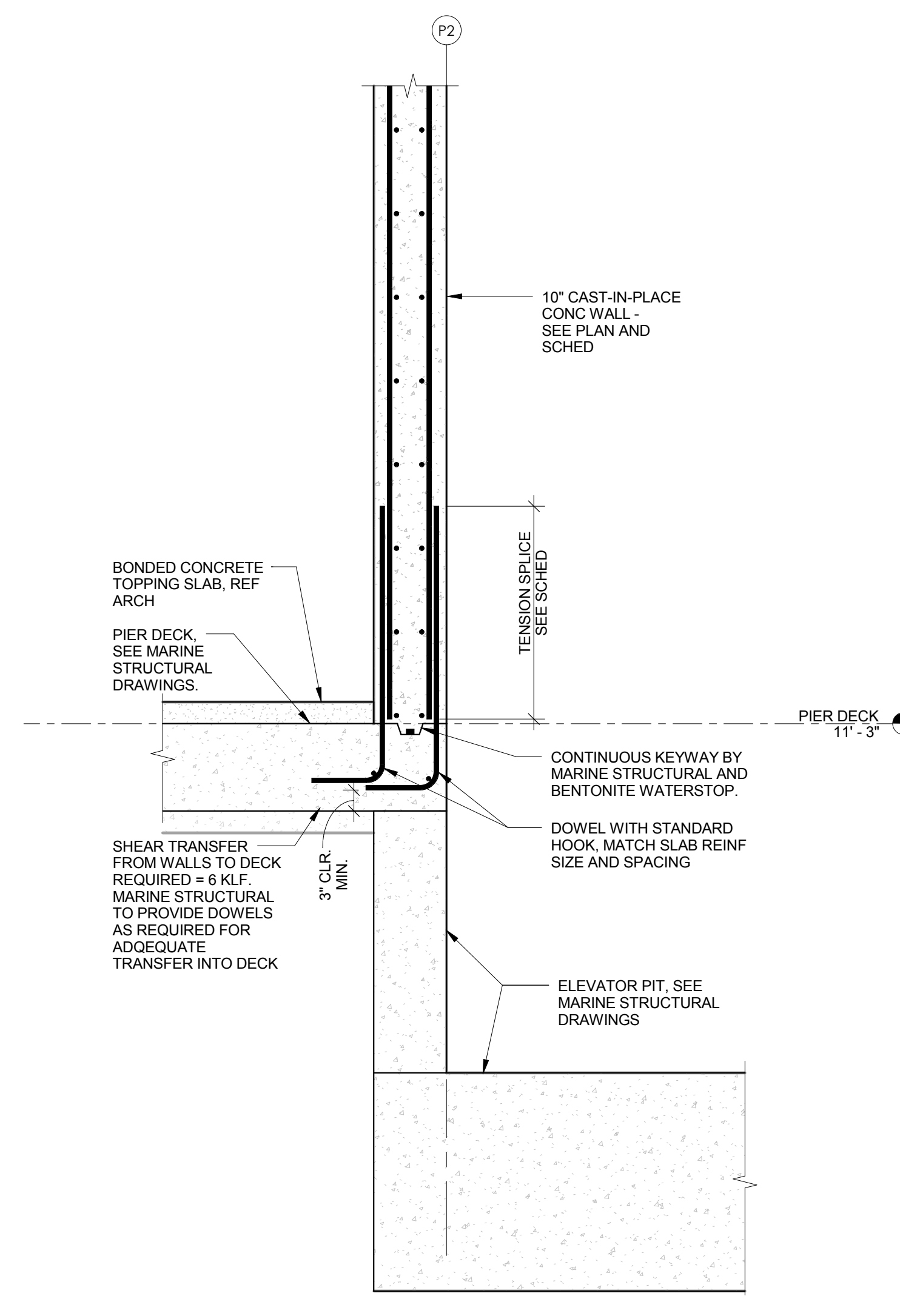
5 SECTION @ TYP. WALL  
3/4" = 1'-0"



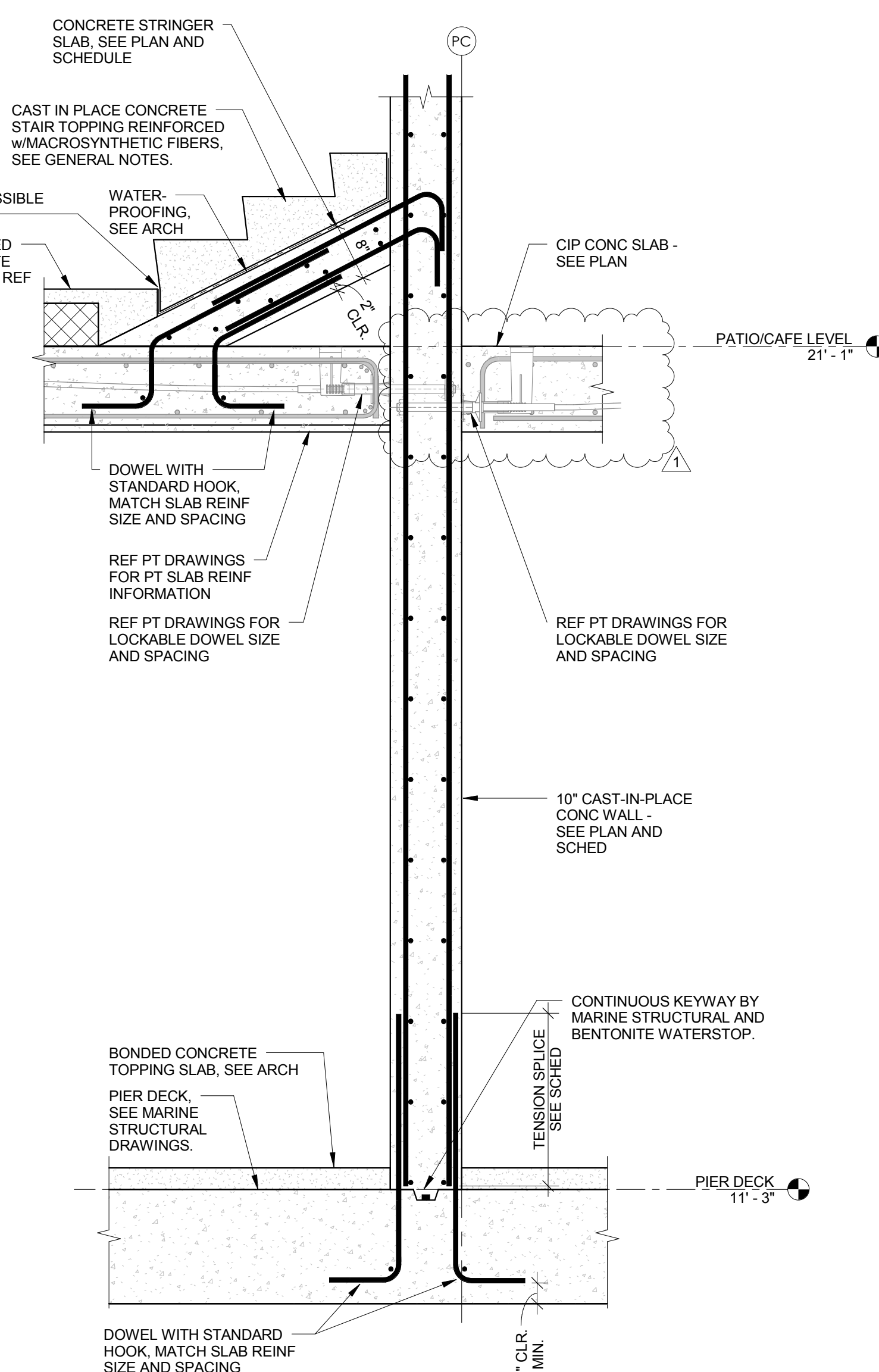
4 SECTION AT SOUTH BASEMENT WALL  
3/4" = 1'-0"



3 SECTION AT WEST BASEMENT WALL  
3/4" = 1'-0"



2 TYP. SECTION @ CORE WALL ELEVATOR PIT  
3/4" = 1'-0"



1 SECTION AT SOUTH CORE WALL TO PIER DECK  
3/4" = 1'-0"

TO THE BEST OF THE STRUCTURAL ENGINEER'S KNOWLEDGE, THE PLANS AND SPECIFICATIONS COMPLY WITH THE APPLICABLE MINIMUM CODES AS DETERMINED BY LOCAL AUTHORITY IN ACCORDANCE WITH CHAPTER 553, FLORIDA STATUTES.