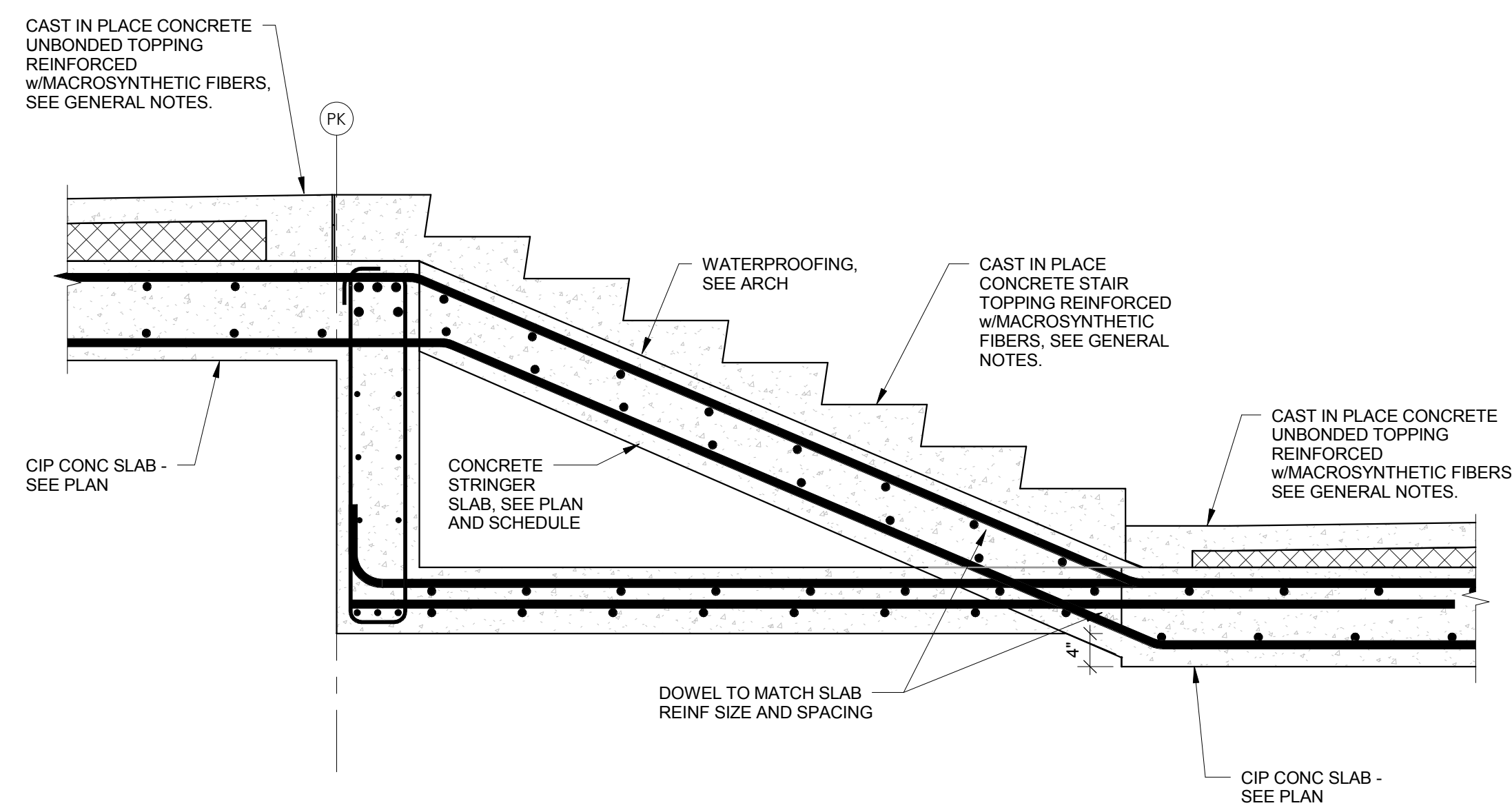
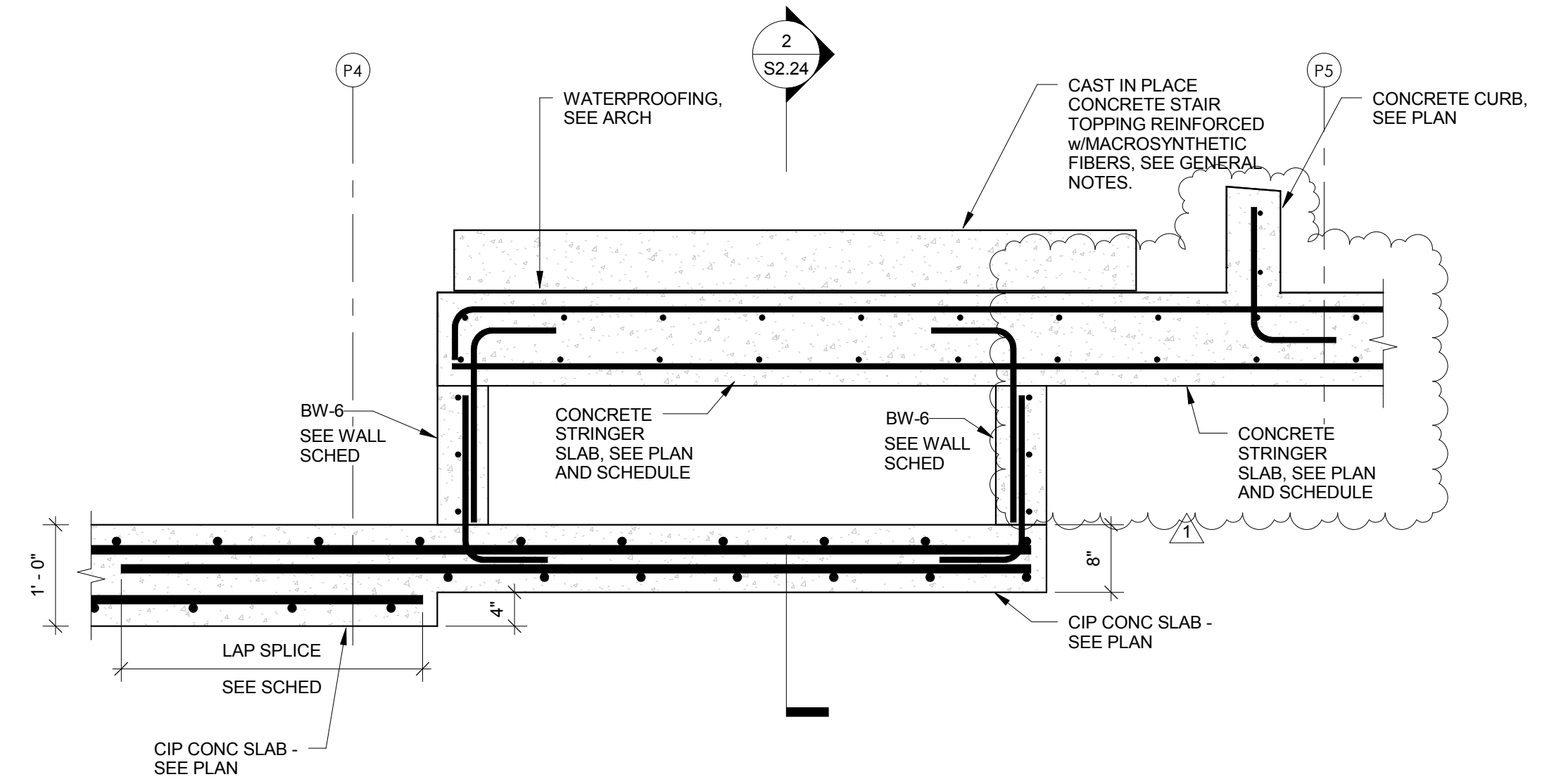


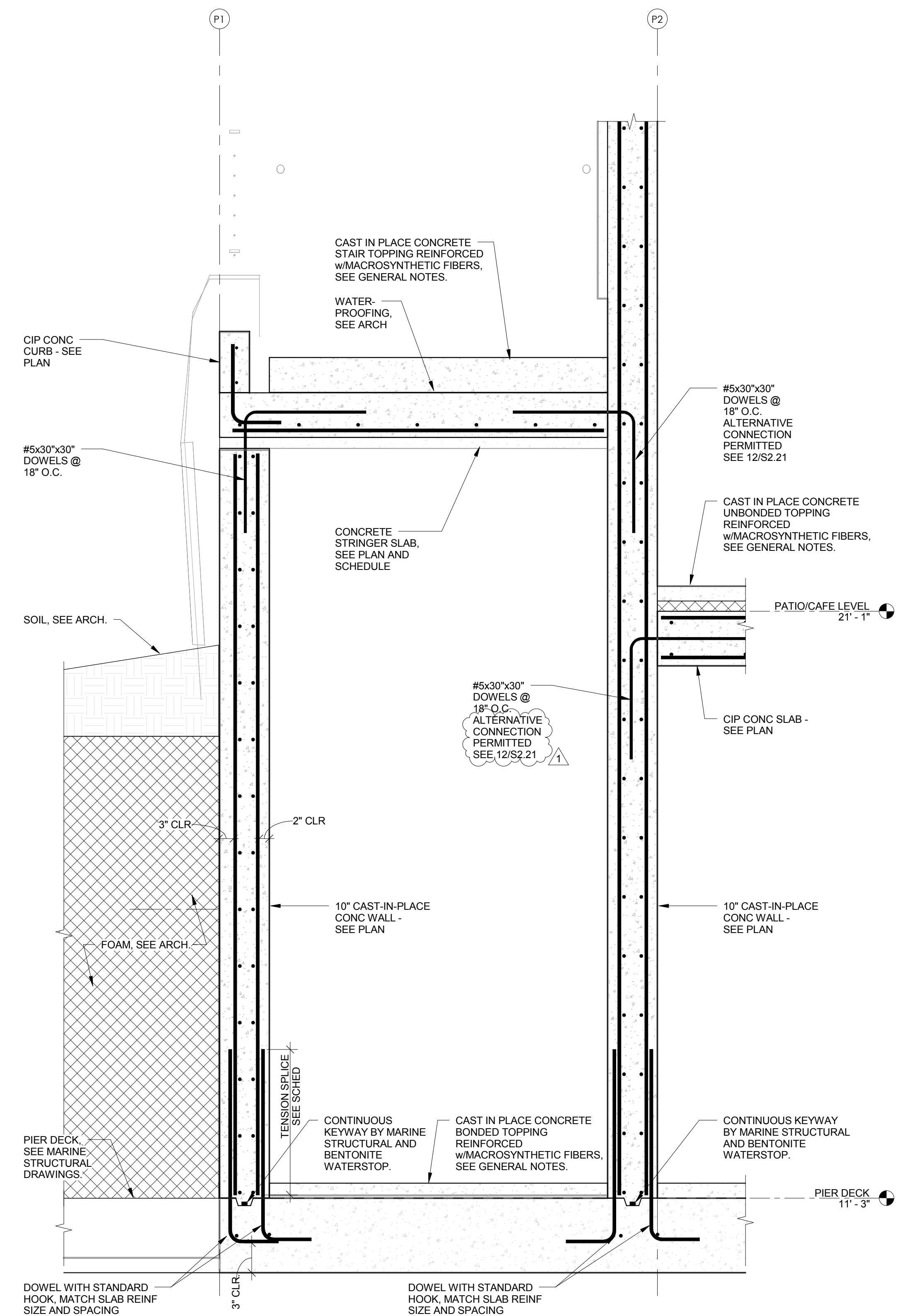
3 SECTION @ BEAM TO COLUMN CONNECTION @ STORAGE  
3/4" = 1'-0"



2 SECTION @ TERRACE SLAB STEP  
3/4" = 1'-0"



4 SECTION @ TERRACE STAIR SLAB  
3/4" = 1'-0"



1 SECTION AT SOUTH BASEMENT WALL @ STAIR  
3/4" = 1'-0"

TO THE BEST OF THE STRUCTURAL ENGINEER'S KNOWLEDGE, THE PLANS AND SPECIFICATIONS COMPLY WITH THE APPLICABLE MINIMUM CODES AS DETERMINED BY LOCAL AUTHORITY IN ACCORDANCE WITH CHAPTER 553, FLORIDA STATUTES.