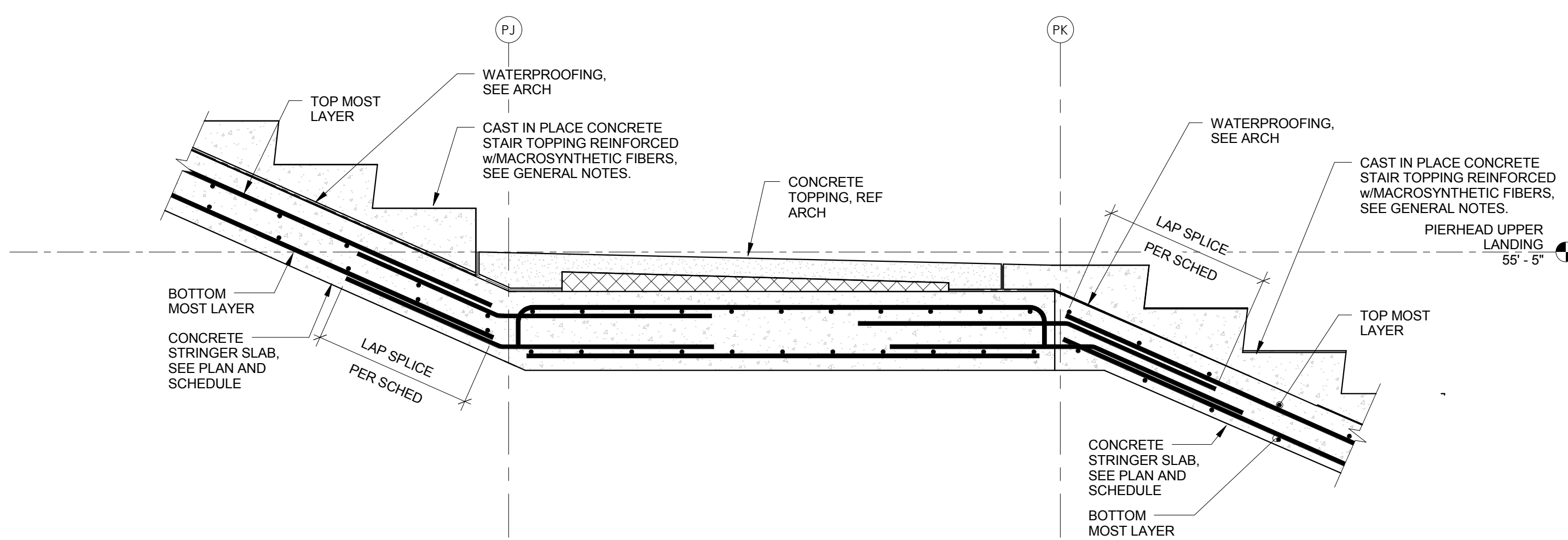
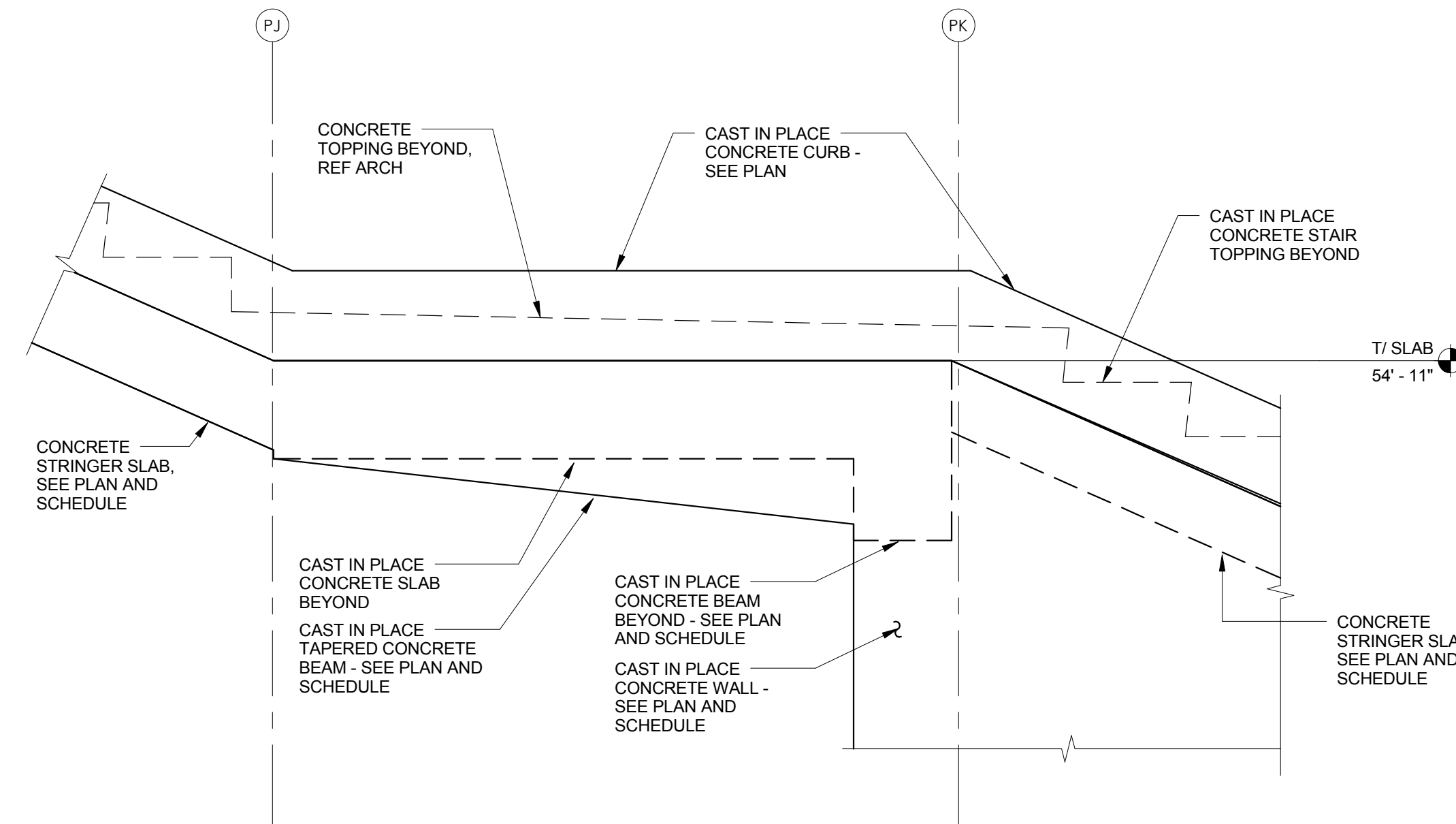


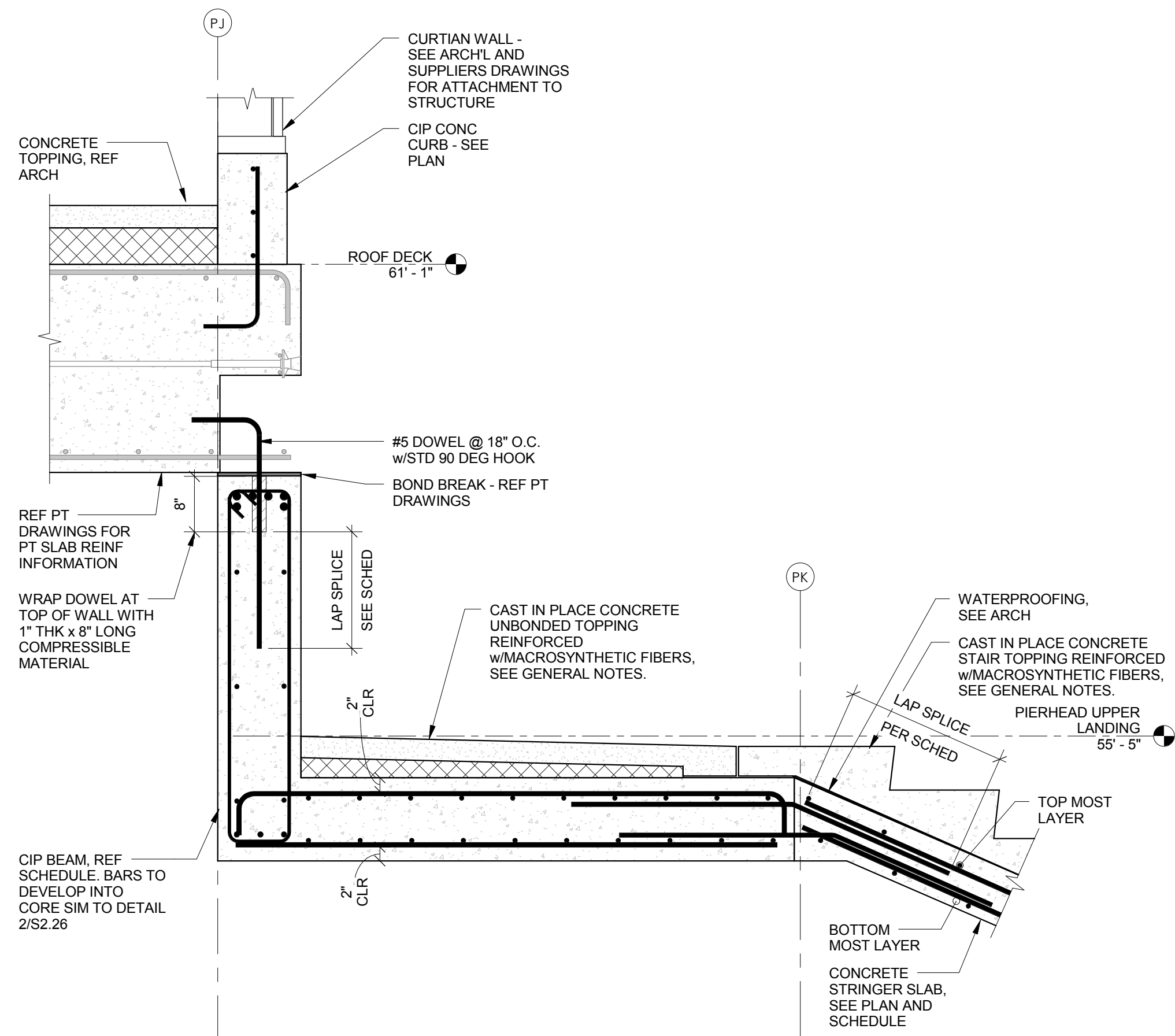
5 TYP. STRINGER SLAB TO CONCRETE WALL  
3/4" = 1'-0"



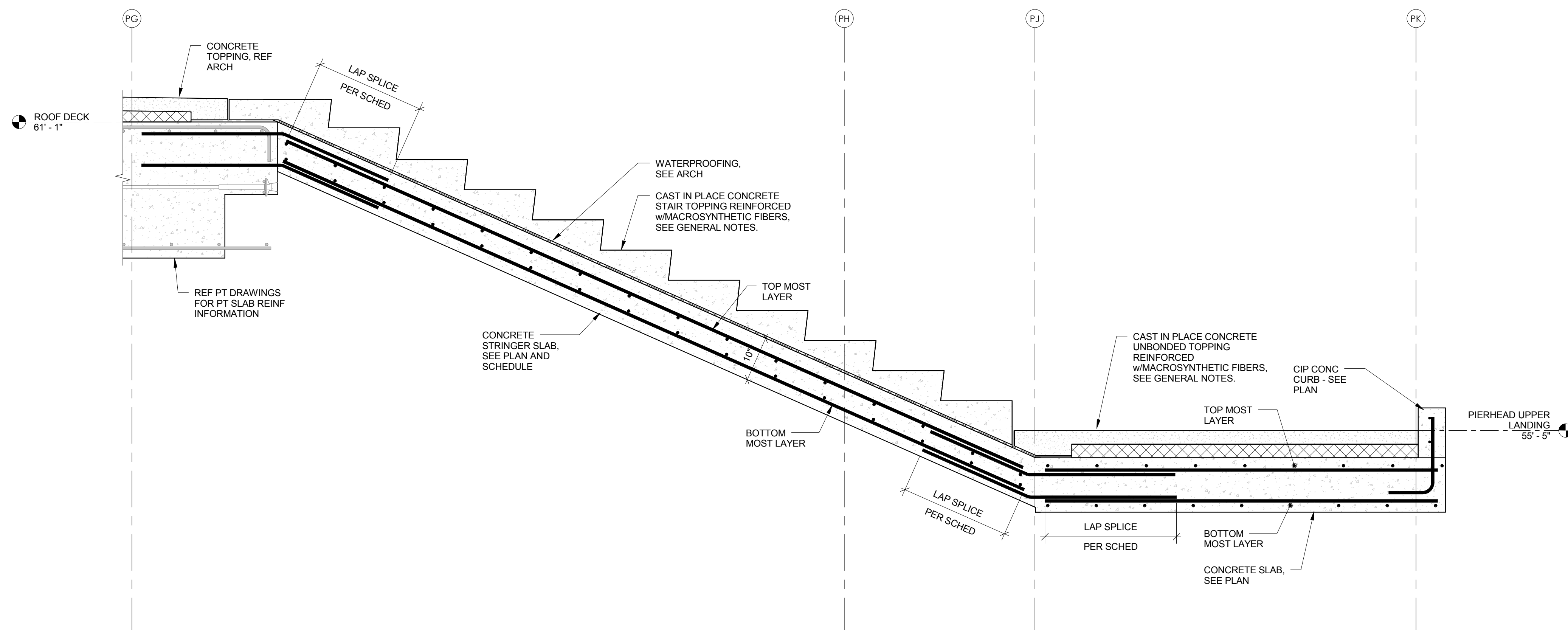
4 SECTION @ UPPER LANDING SLAB  
3/4" = 1'-0"



3 SECTION @ UPPER LANDING TAPERED BEAM  
3/4" = 1'-0"



2 SECTION @ UPPER LANDING FRAMING  
3/4" = 1'-0"



1 SECTION @ UPPER LANDING STAIR  
3/4" = 1'-0"

TO THE BEST OF THE STRUCTURAL ENGINEER'S KNOWLEDGE, THE PLANS AND SPECIFICATIONS COMPLY WITH THE APPLICABLE MINIMUM CODES AS DETERMINED BY LOCAL AUTHORITY IN ACCORDANCE WITH CHAPTER 553, FLORIDA STATUTES.