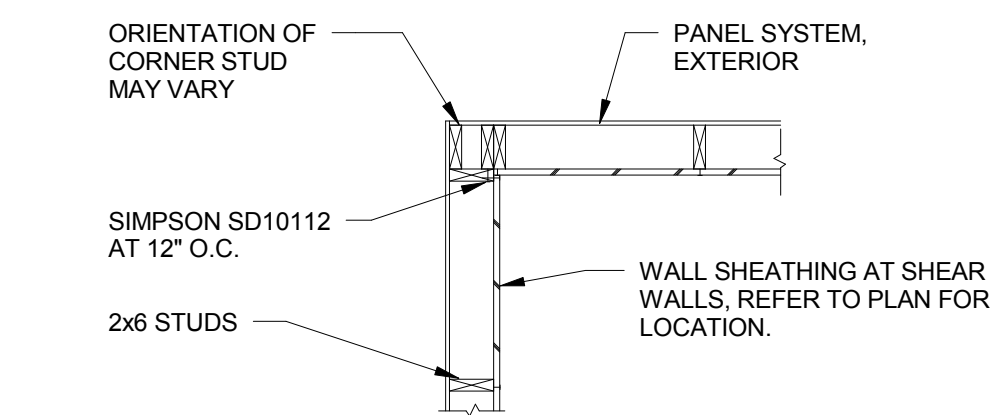
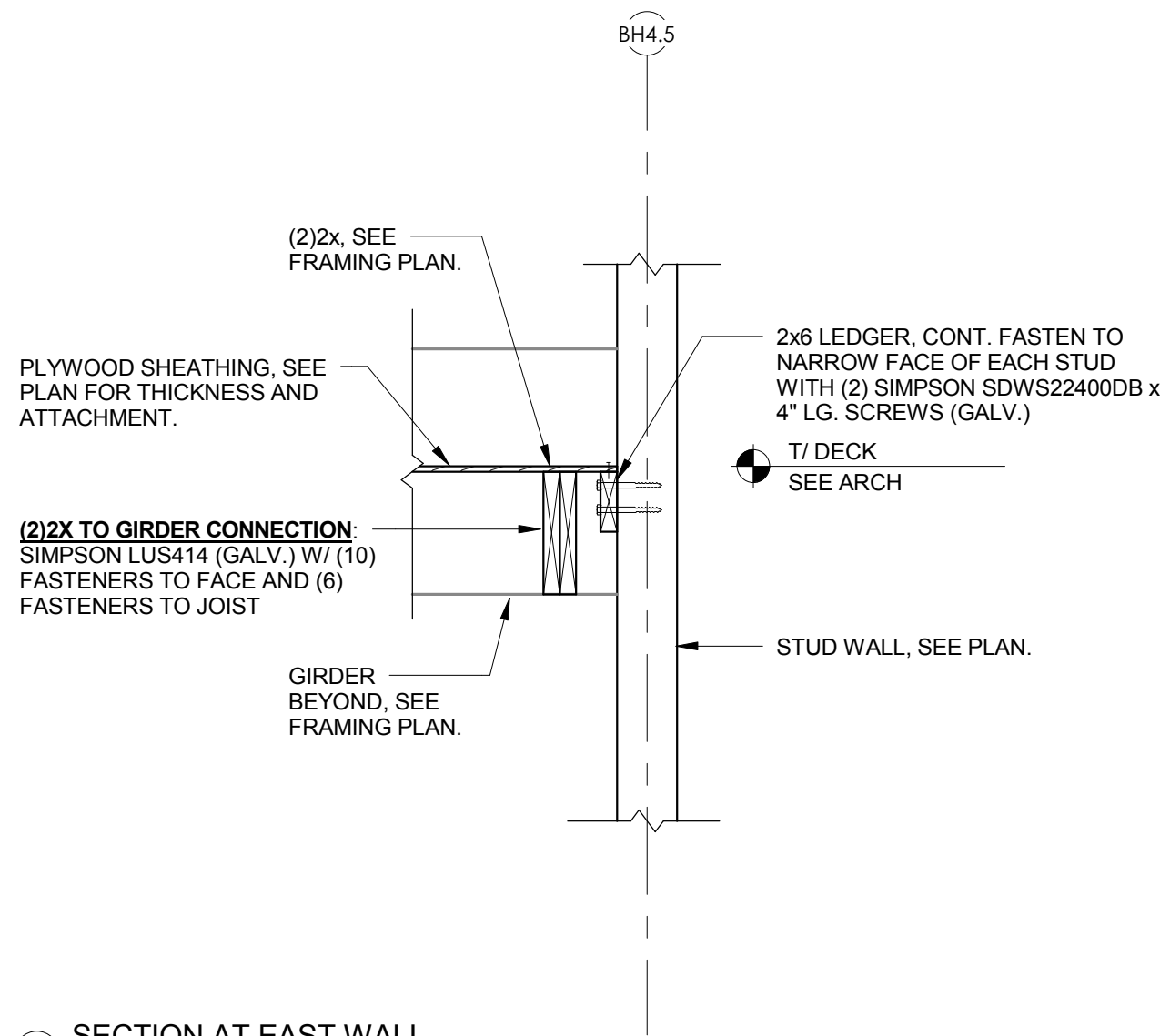


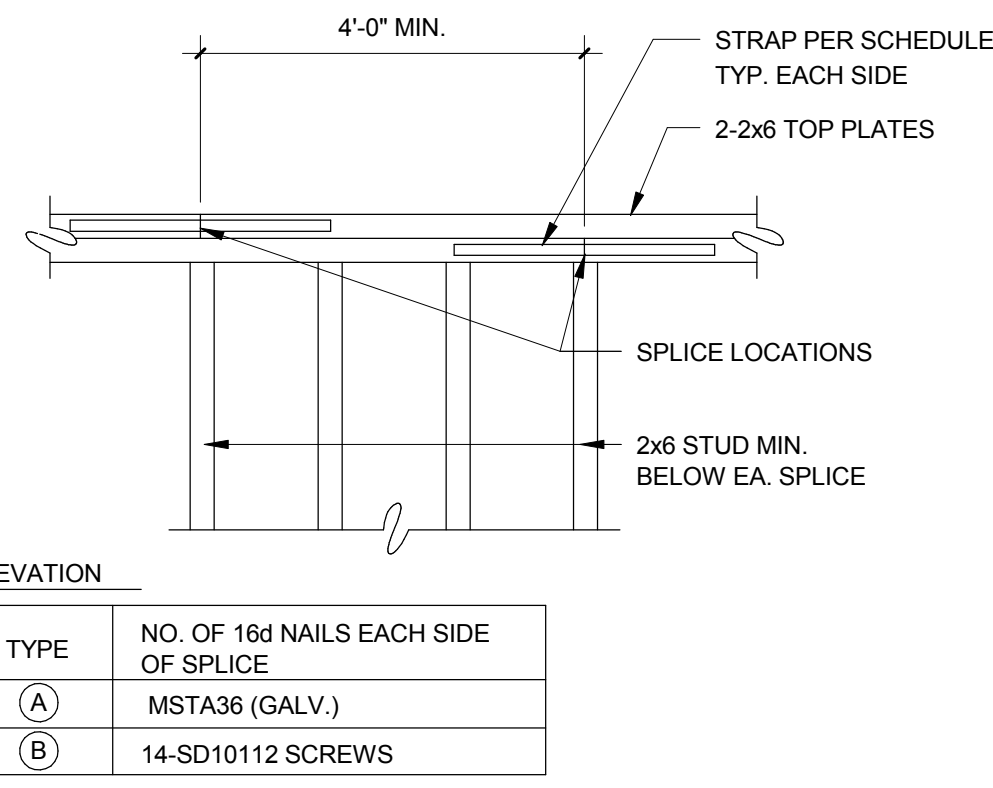
9 TYP. HOLD DOWN ANCHOR  
3/4" = 1'-0"



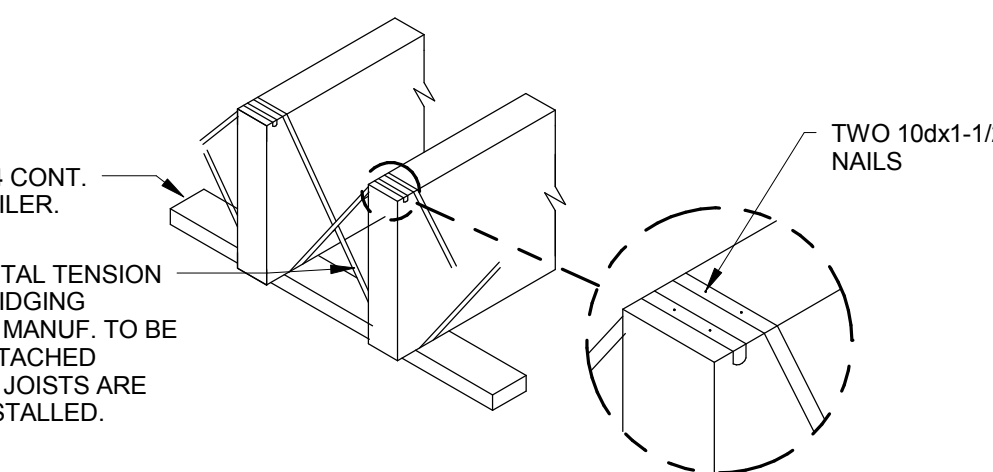
7 INSIDE CORNER DETAIL  
1/2" = 1'-0"



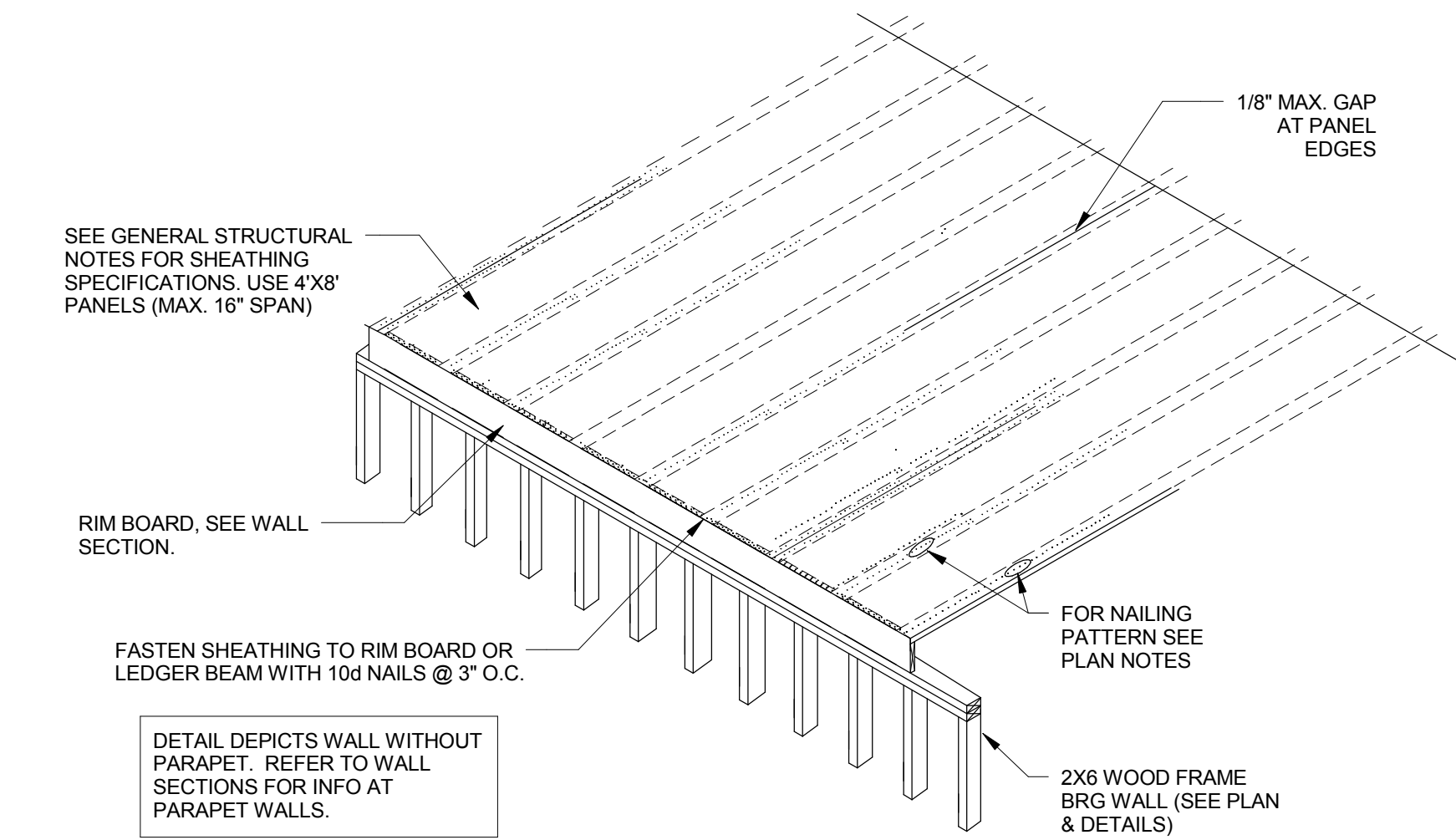
4 SECTION AT EAST WALL  
3/4" = 1'-0"



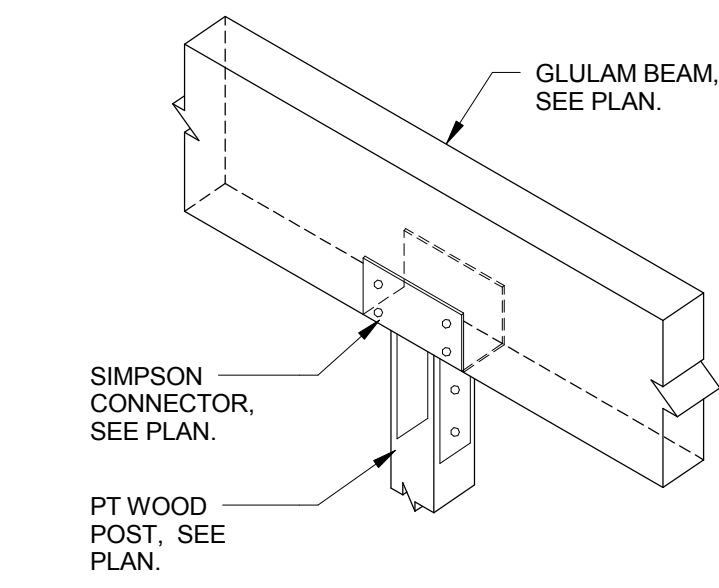
8 TOP PLATE SPLICE  
3/4" = 1'-0"



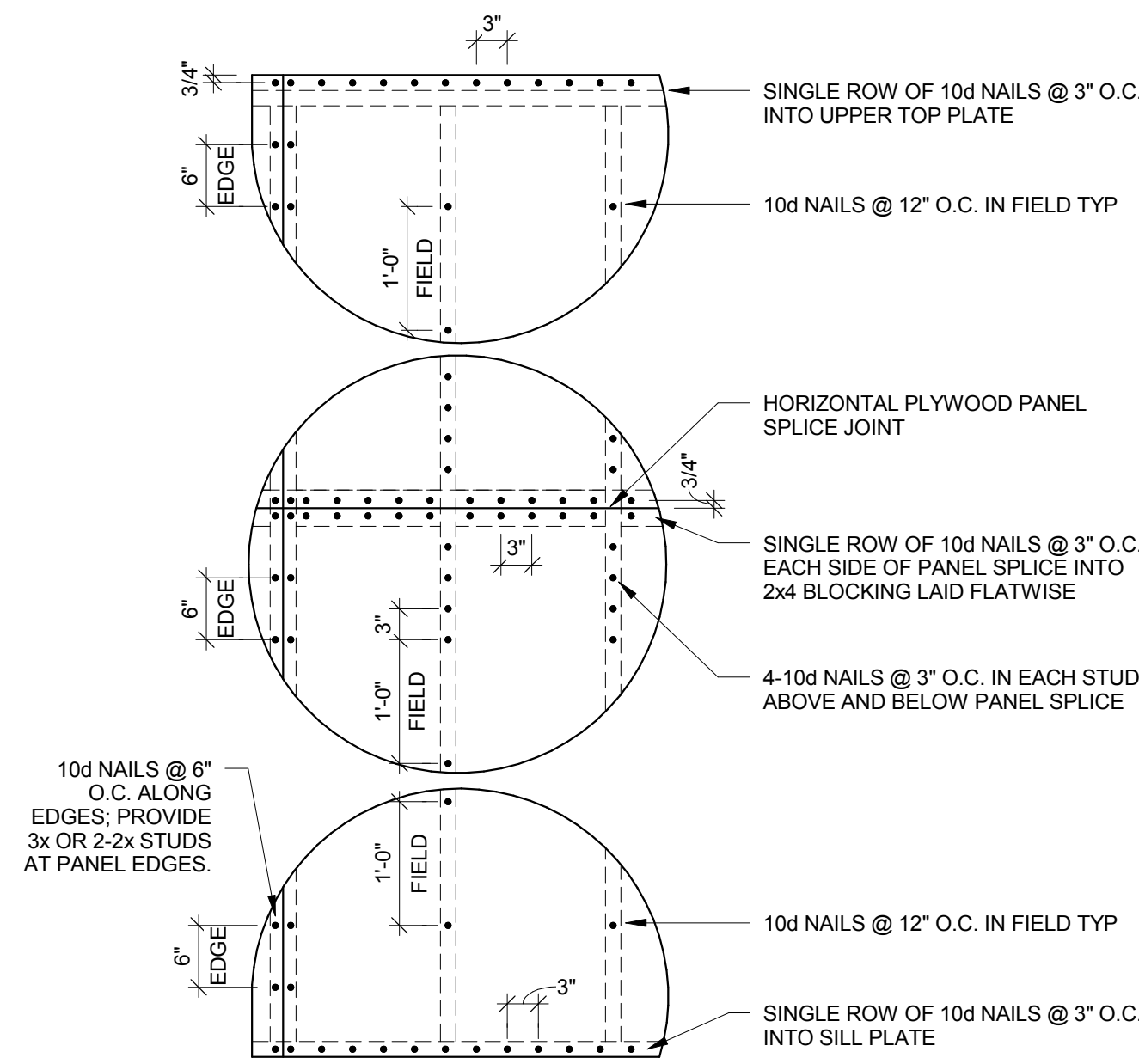
6 JOIST BRIDGING DETAIL  
3/4" = 1'-0"



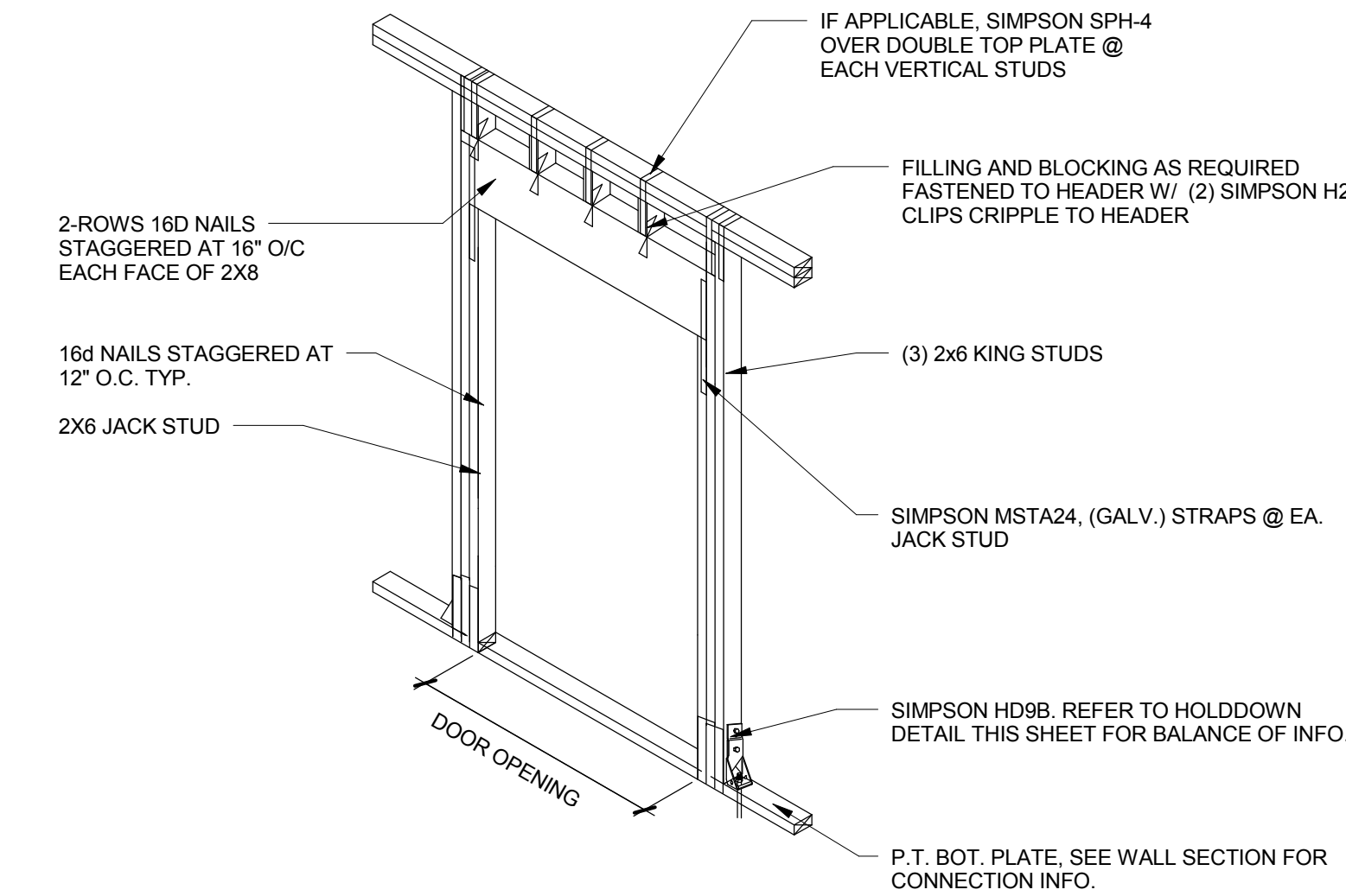
13 FLOOR NAILING PLAN  
3/4" = 1'-0"



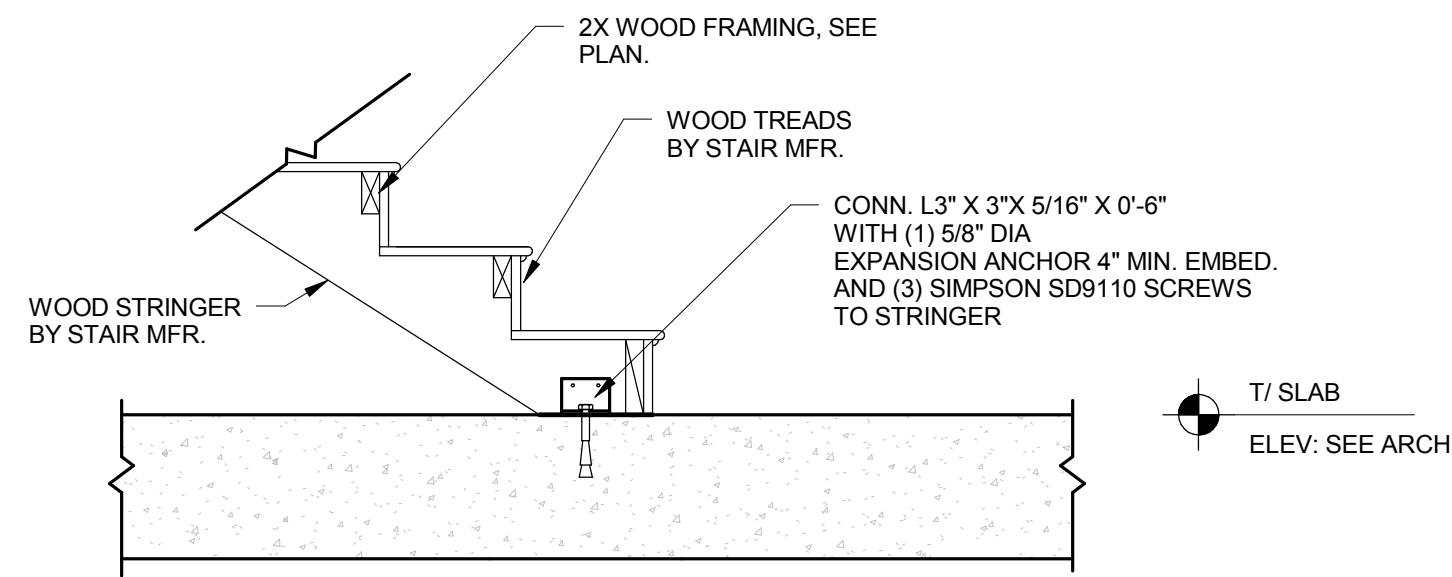
12 GIRDER TO POST CONNECTION  
1 1/2" = 1'-0"



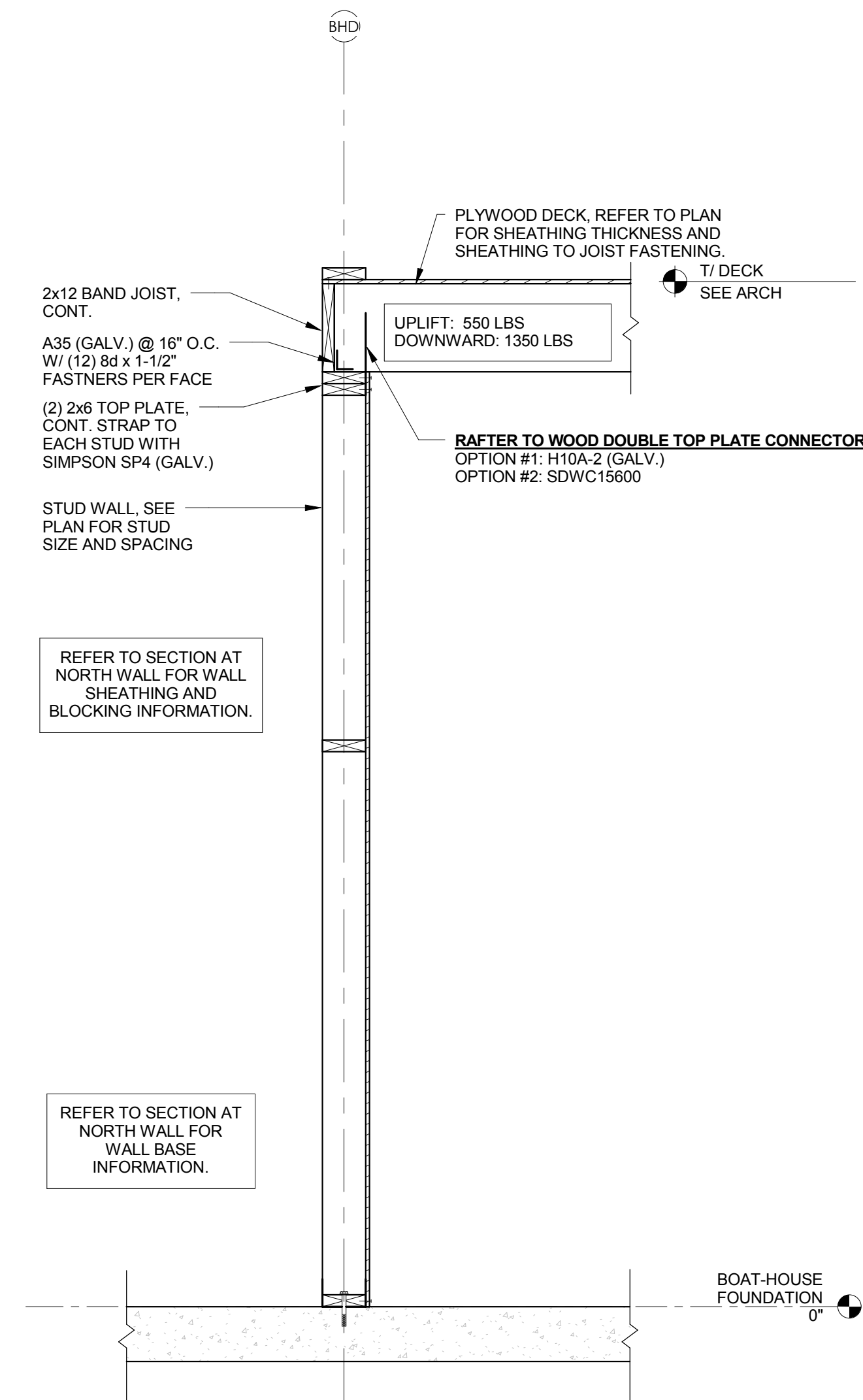
5 TYPICAL PLYWOOD WALL SHEATHING ATTACHMENT  
3/4" = 1'-0"



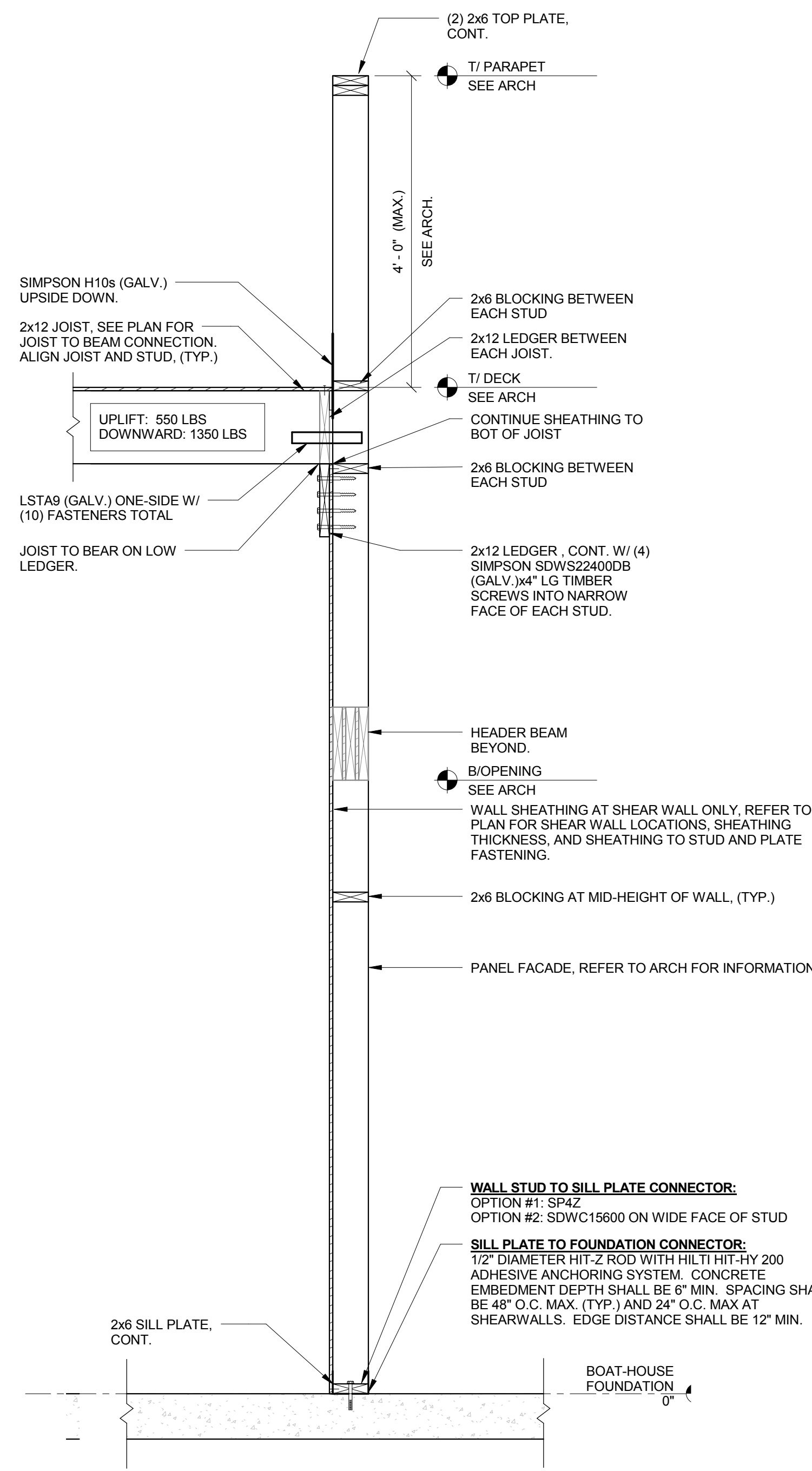
11 WOOD FRAMED OPENING DETAIL  
1/4" = 1'-0"



10 TYPICAL STAIR FOOTING SECTION  
3/4" = 1'-0"



2 SECTION AT SOUTH WALL  
3/4" = 1'-0"



1 SECTION AT NORTH WALL  
3/4" = 1'-0"

TO THE BEST OF THE STRUCTURAL ENGINEER'S KNOWLEDGE, THE PLANS AND SPECIFICATIONS COMPLY WITH THE APPLICABLE MINIMUM CODES AS DETERMINED BY LOCAL AUTHORITY IN ACCORDANCE WITH CHAPTER 553, FLORIDA STATUTES.