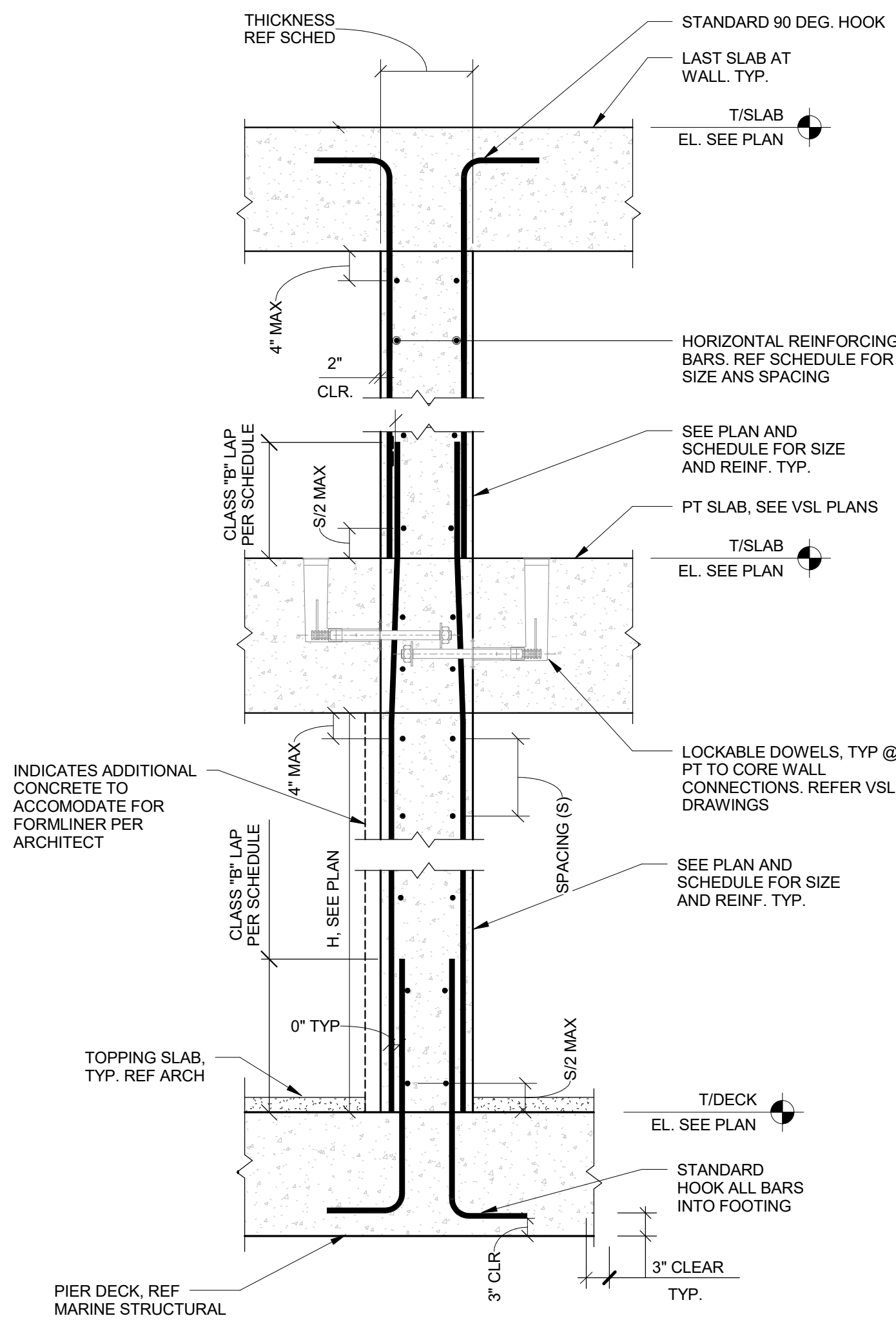
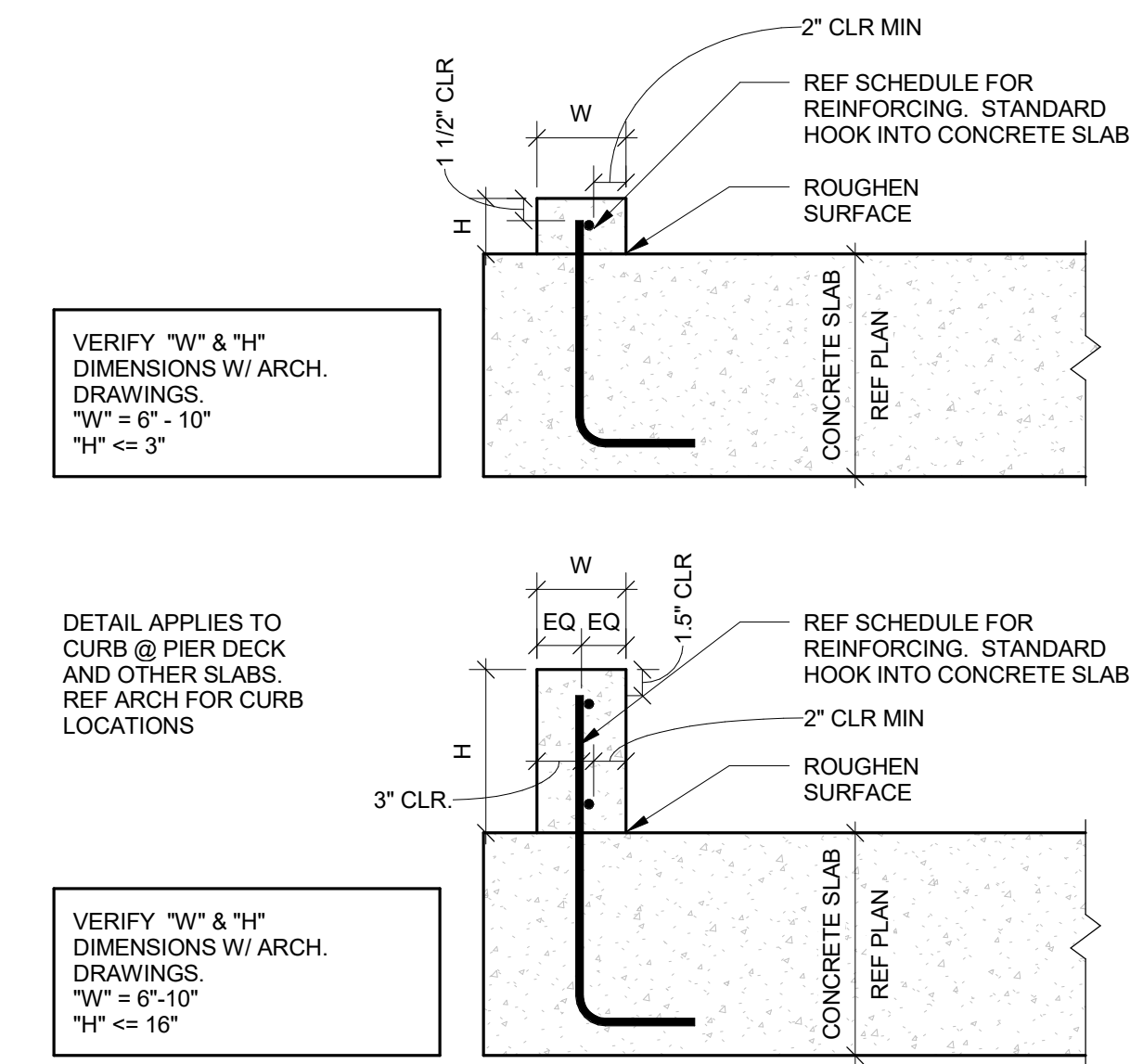
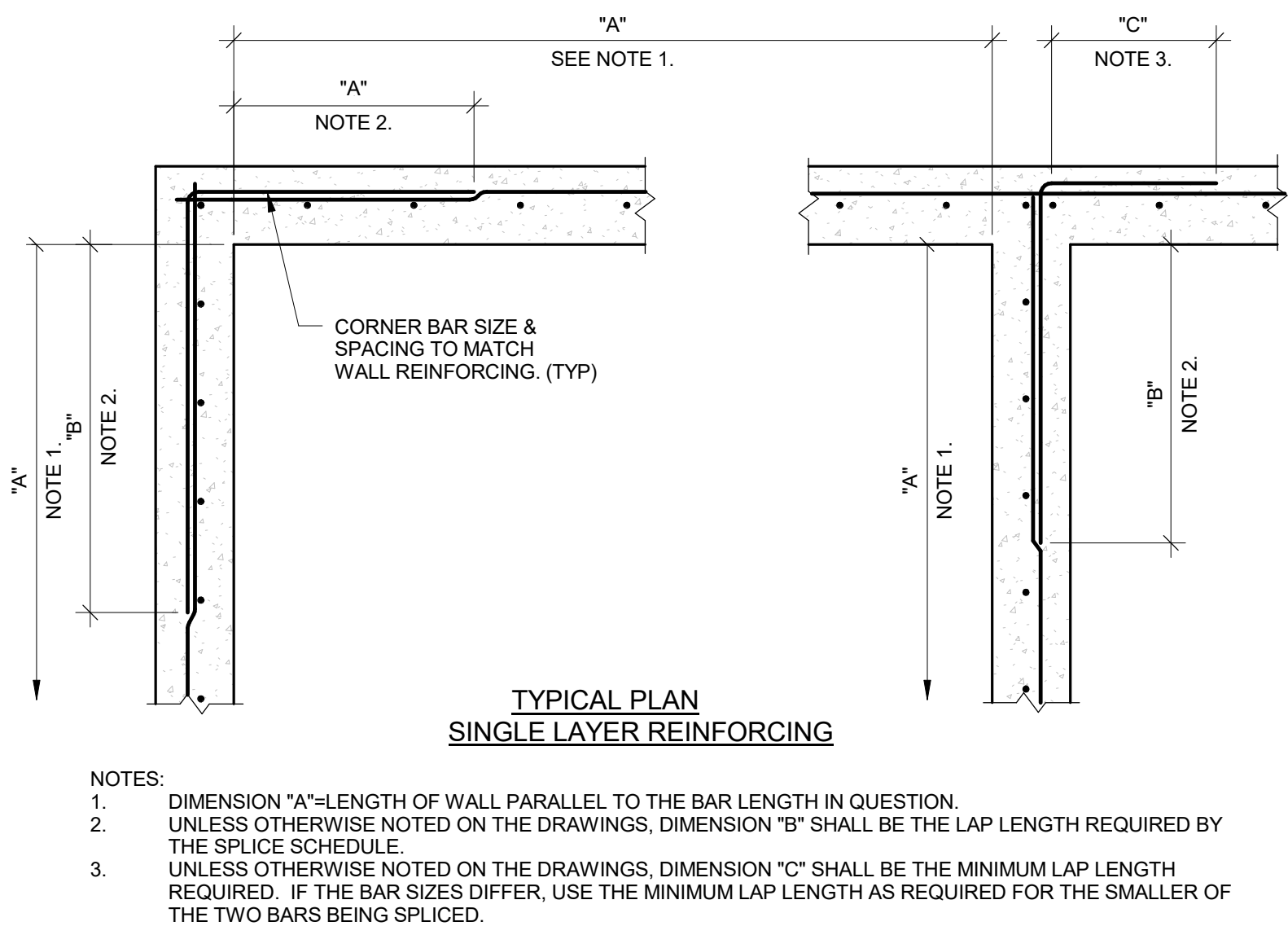
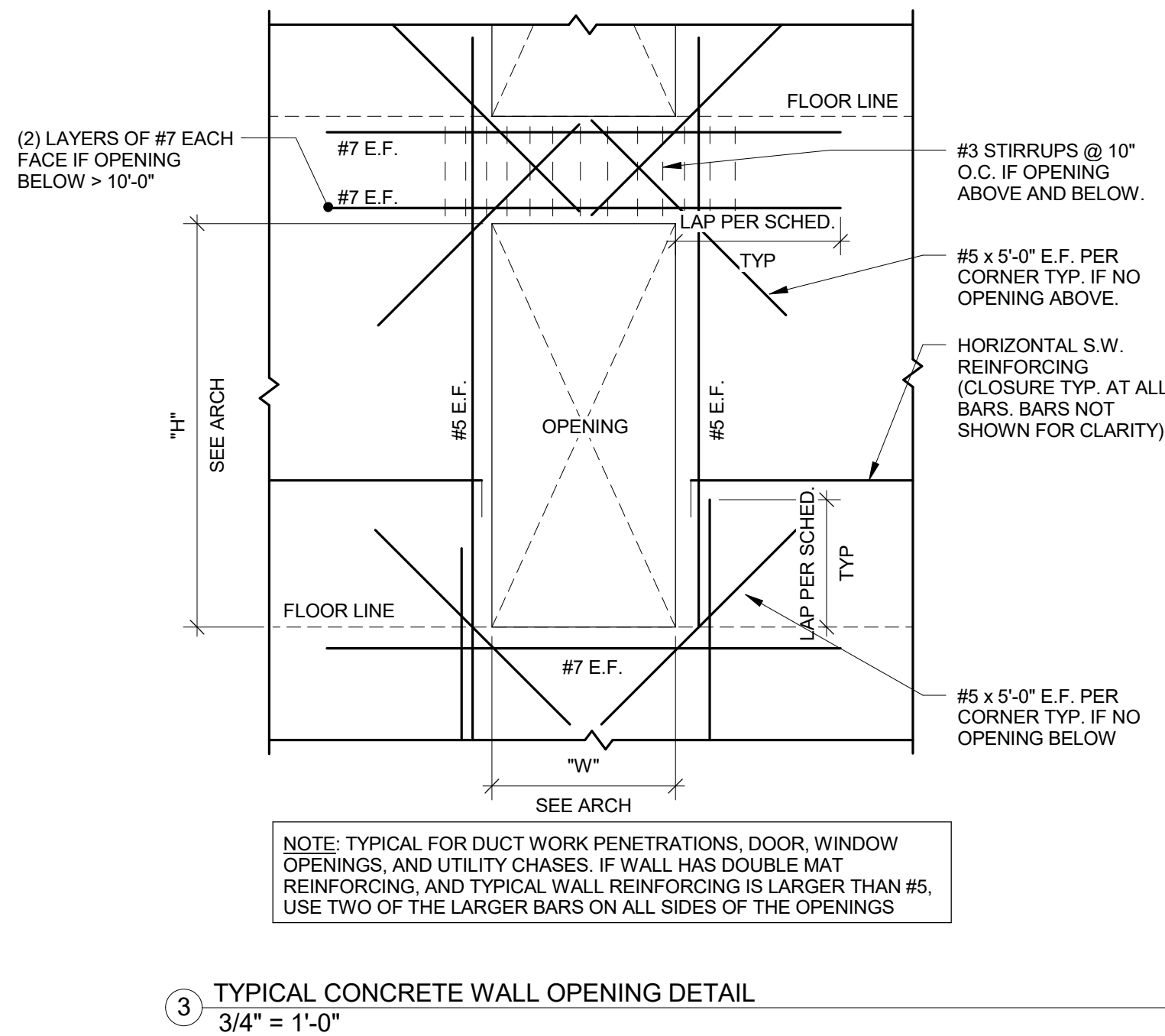
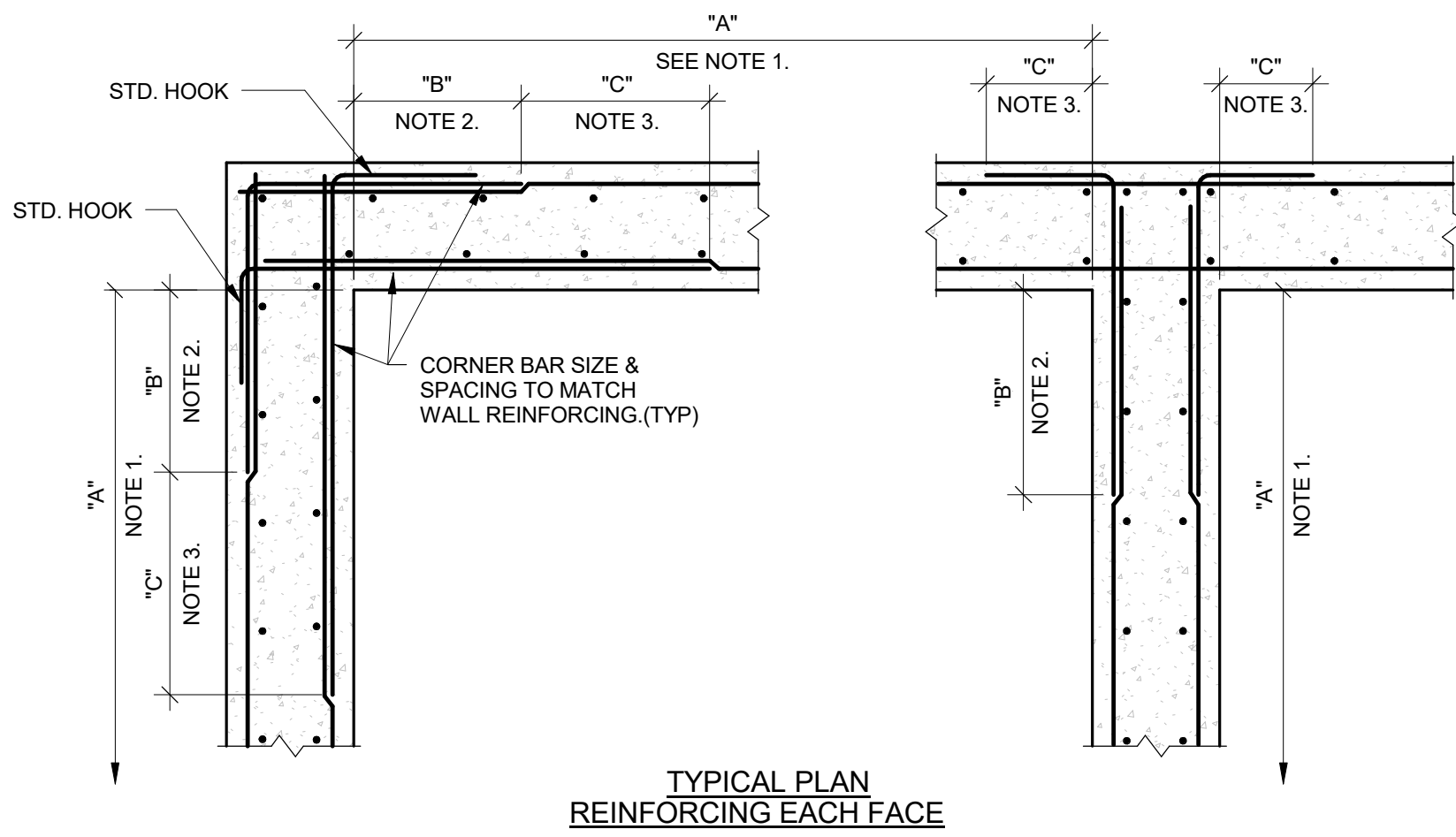
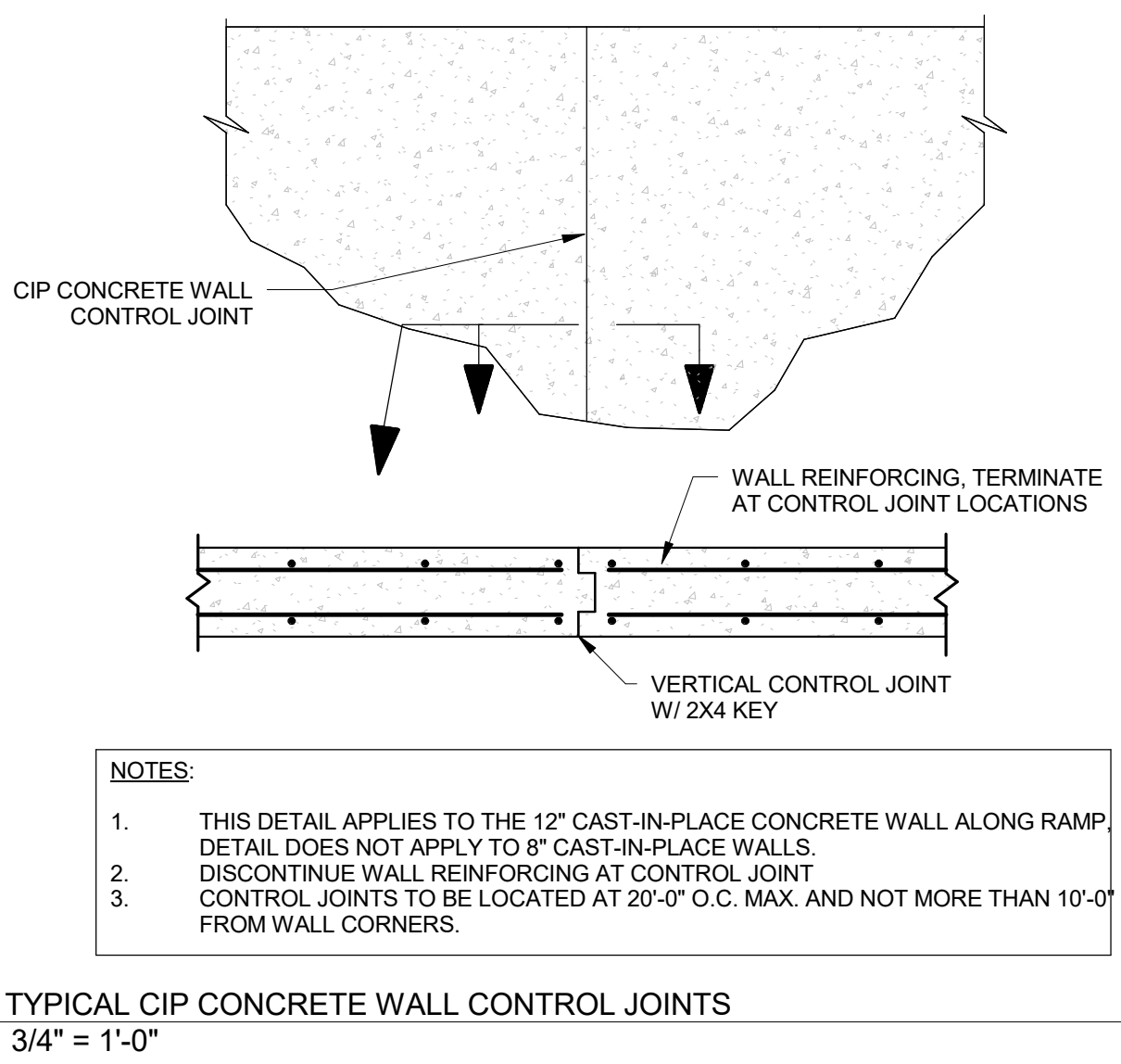
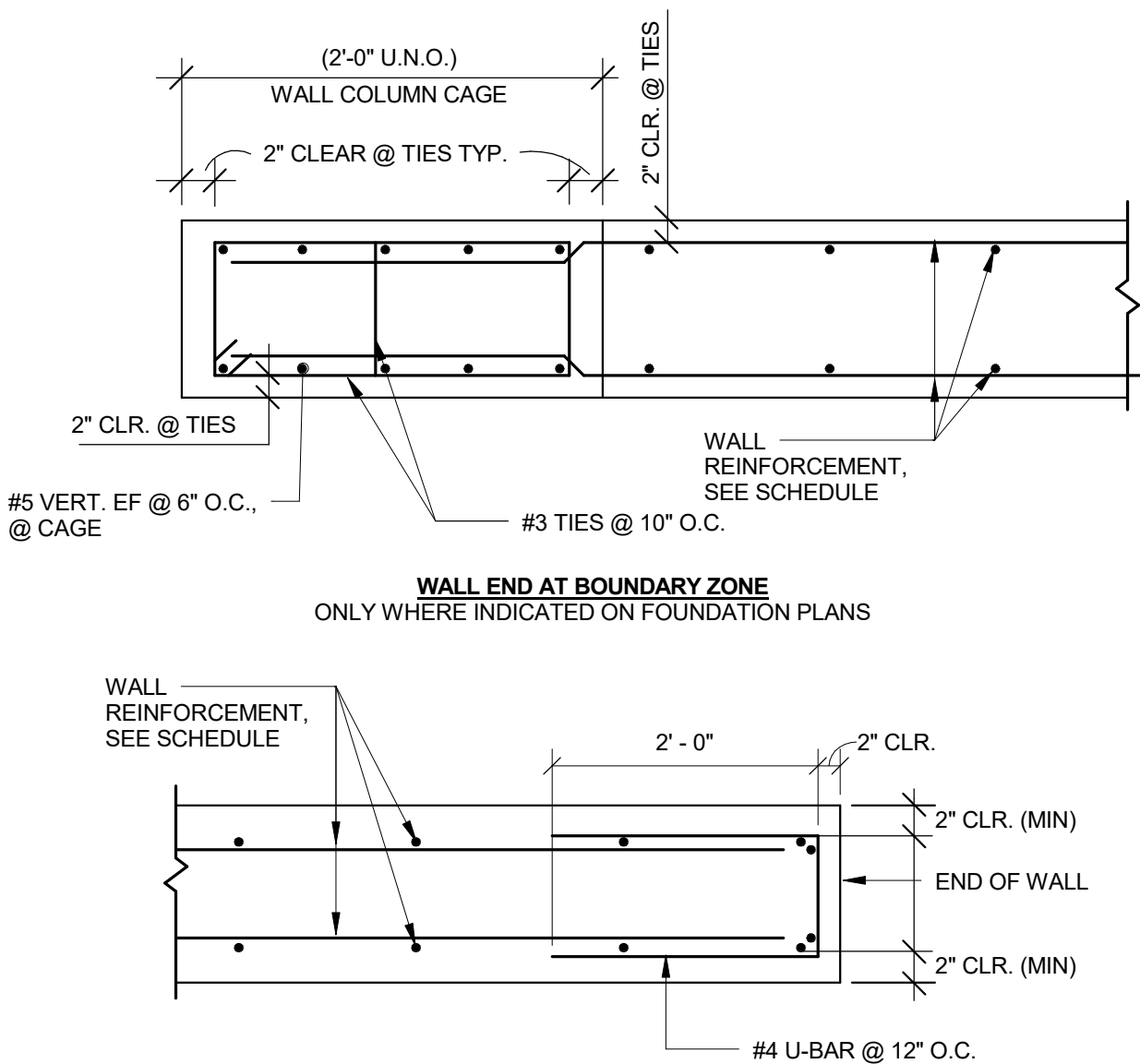


CONCRETE WALL SCHEDULE							
			REINFORCEMENT		ADD'L BARS		REMARKS
MARK	TYPE	THICKNESS	VERT.	HORIZ.	BOUND	TIES	
BW-6	BEARING WALL	6"	#5 @ 12"	#5@ 12"	-	-	TERRACE STAIR SUPPORT
BW-8	BEARING WALL	8"	#5 @ 18" E.F.	#5 @ 18" E.F.	-	-	PIER HEAD
BW-10	BEARING WALL	10"	#5 @ 18" E.F.	#5 @ 18" E.F.	-	-	PIER HEAD & PAVILION
C-6	CURB		#4 @ 12"	(2) #4	-	-	SEE DETAIL 5/S7.11
C-6B	KNEE WALL/CURB	6"	#5 @ 8"	#4@ 12"	-	-	PAVILION
C-8	CURB	8"	#5 @ 8"	#4@ 12"	-	-	TILTED LAWN & PAVILION
C-10	KNEE WALL/CURB	10"	#5 @ 8"	#4@ 12"	-	-	PAVILION
C-10B	CURB	10"	#4 @ 12"	(1) #4	-	-	CURB HEIGHT 3" OR LESS
CW-8	CORE SHEAR WALL	8"	#5 @ 12" E.F.	#5 @ 18" E.F.	6 #5 BARS	#3 @ 12"	REF 1/S7.11 FOR BOUNDARY CONDITIONS
CW-10	CORE SHEAR WALL	10"	#5 @ 12" E.F.	#5 @ 18" E.F.	6# 5 BARS	#3 @ 12"	REF 1/S7.11 FOR BOUNDARY CONDITIONS
CW-12	CORE SHEAR WALL	1' - 0"	#5 @ 12" E.F.	#5 @ 18" E.F.	6 #5 BARS	#3 @ 12"	REF 1/S7.11 FOR BOUNDARY CONDITIONS
RW-8	RETAINING WALL	8"	#4 @ 12"	#4@ 12"	-	-	PAVILION
RW-10	RETAINING WALL	10"	#4@ 10" O.F., #6 @ 10" I.F.	#4 @ 12" E.F.	-	-	CONCRETE COVER @ EXPOSED EARTH = 3"
RW-12	RETAINING WALL	1' - 0"	#4@ 10" O.F., #6 @ 10" I.F.	#4 @ 12" E.F.	-	-	CONCRETE COVER @ EXPOSED EARTH = 3"
SW-8	SHEAR WALL		#5 @ 12" E.F.	#5 @ 18" E.F.	-	-	PAVILION AND EDUCATION CENTER
SW-10	SHEAR WALL	10"	#5 @ 12" E.F.	#5 @ 18" E.F.	-	-	
SW-12	SHEAR WALL	1' - 0"	#5 @ 12" E.F.	#5 @ 18" E.F.	-	-	EDUCATION CENTER

- NOTES:
- 2" CLEAR COVER TO REINF FOR ALL WALLS AND CURBS
 - REF GENERAL NOTES FOR REQUIRED CONCRETE STRENGTH OF WALLS AND CURBS
 - E.F. = EACH FACE
 - I.F. = INSIDE FACE, TYP @ SIDE OF WALL NOT EXPOSED TO EXTERIOR CONDITIONS, REF SECTION FOR ADDL INFORMATION
 - O.F. = OUTSIDE FACE, TYP @ SIDE OF WALL EXPOSED TO INTERIOR CONDITIONS, REF SECTION FOR ADDLS INFORMATION
 - TILTED LAWN WALL REINFORCEMENT INDICATED ON THE TILTED LAWN WALL SECTIONS, NOT SCHEDULED HERE
 - ALL ARCHITECTURAL FORMLINER TO BE PROVIDED IN ADDITION TO CONCRETE WALL THICKNESS SHOWN IN SCHEDULE



TO THE BEST OF THE STRUCTURAL ENGINEER'S KNOWLEDGE, THE PLANS AND SPECIFICATIONS COMPLY WITH THE APPLICABLE MINIMUM CODES AS DETERMINED BY LOCAL AUTHORITY IN ACCORDANCE WITH CHAPTER 553, FLORIDA STATUTES.

ASD SKY

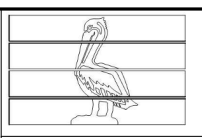
ROGERS PARTNERS
Architects+Urban Designers
100 Roadside Street
New York, New York 10013
212-309-7270
www.rogersarchitects.com

WORKSHOP
KEN SMITH LANDSCAPE ARCHITECT
450 West 21st Street, 5th Fl, New York, NY 10011
212-791-3325
ken@smithworkshop.com

NO.	REVISIONS:	DATE:
2	2019	10/21/2019
1	ADD 06 - EDUCATION CENTER TENANT REVISIONS	09/17/2019

4880 W. Kennedy Blvd.
Suite 250
Tampa, Florida 33609
Phone: 813-637-0110
Fax: 813-637-0013
www.k-engineers.com
©Copyright 2017 TLC Engineering for Architecture, Inc.
COA 15
TLC NO. 714128

THE NEW ST PETERSBURG PIER
CITY OF ST PETERSBURG
CITY PROJECT NO. 09227-019



ENGINEERING AND CAPITAL
IMPROVEMENTS DEPARTMENT
CITY OF ST. PETERSBURG

APPROVED BY:

100% CONSTRUCTION DOCUMENTS
CONCRETE WALL SCHEDULE
AND DETAILS

ISSUE DATE: 05-19-2017
DRAWN BY: Author
CHECKED BY: Checker
COP DRAWING: 11063-
S7.11