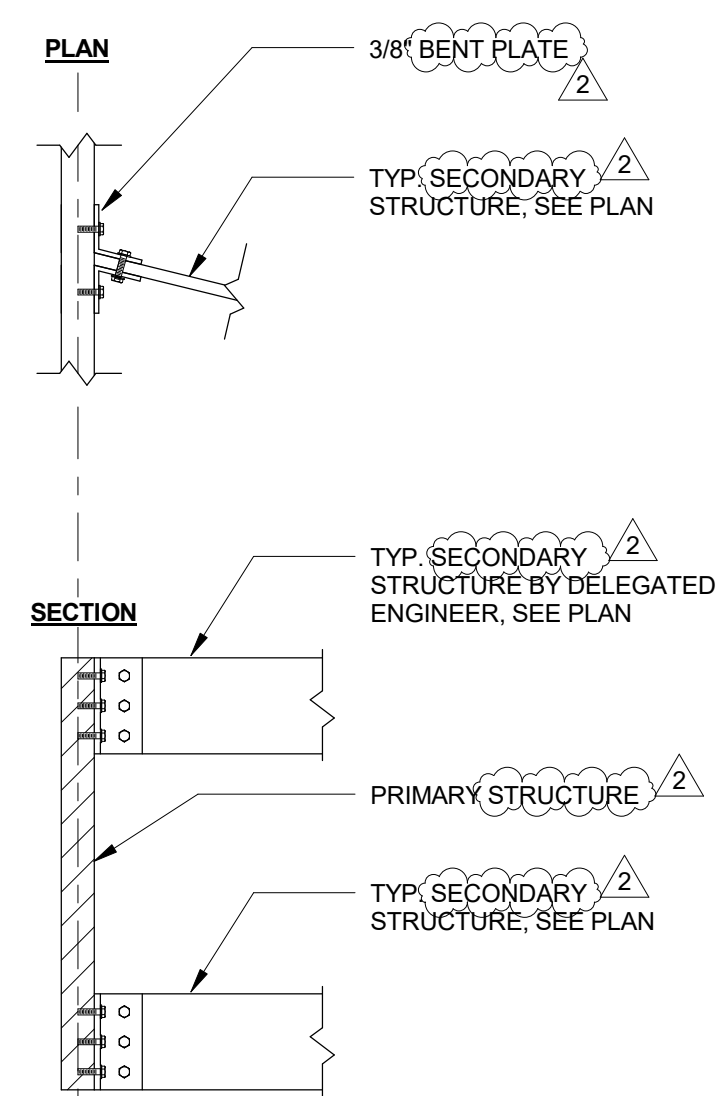


SECTION

HARD CONNECTION

NOTE: PLACEMENT OF ANCHOR RODS IS OF CRITICAL IMPORTANCE TO THE CONSTRUCTABILITY OF THE CANOPY STRUCTURE. CONCRETE CONTRACTOR TO USE A 1/8" STEEL PLATE TEMPLATE TO SET THE ANCHOR BOLTS. SURVEY TEMPLATE PRIOR TO CASTING



TYP. CANTILEVER TO GIRDER CONNECTION
3/4" = 1'-0"

1 TYP. CANTILEVER INTERMEDIATE BRACE CONNECTION
3/4" = 1'-0"

TO THE BEST OF THE STRUCTURAL ENGINEER'S
KNOWLEDGE, THE PLANS AND SPECIFICATIONS
COMPLY WITH THE APPLICABLE MINIMUM CODES AS
DETERMINED BY LOCAL AUTHORITY IN ACCORDANCE
WITH CHAPTER 553, FLORIDA STATUTES.