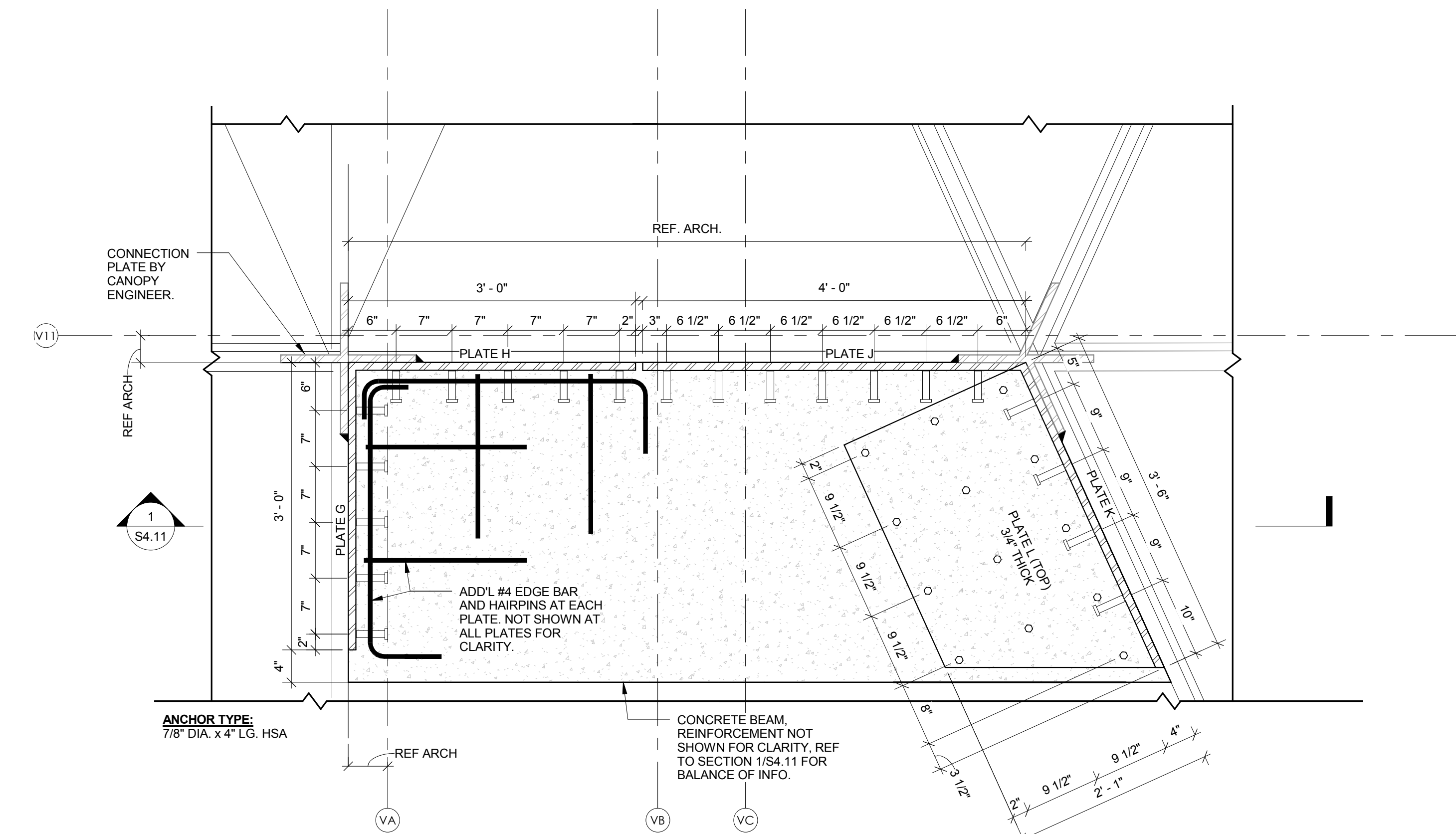


CANOPY CONNECTION DESIGN - ULTIMATE LOADS								
BLDG	KEY NOTE MARK	DIM	AXIAL C OR T (KIPS)	MAJOR AXIS SHEAR (+ OR -) (KIPS)	MINOR AXIS SHEAR (+ OR -) (KIPS)	MAJOR AXIS MOMENT (+ OR -) (KIP-FT)	MINOR AXIS MOMENT (+ OR -) (KIP-FT)	TORSION
PIERHEAD	A	TB 36X6	90	250	20	1375	60	
PIERHEAD	B	PL 36X3	220	50	-	1200	-	-
PIERHEAD	C	PL 18X1.5	95	15	-	80	-	-
PIERHEAD	D	VARIABLES			-		-	-
PAV/EDU	7	14X4.5	15	35	-	370	-	-
PAV/EDU	4	14X4	25	40	-	285	-	-
PAV/EDU	3	14X3	25	20		185		REF PLAN FOR AREA...
PAV/EDU	2	14X2.5	40	20		155		
PAV/EDU	1	14X2	22	15		65		
PAV/EDU	TYP	14/12X1.5	15	15		70		
PAV/EDU	PERIMETER	14/12X1	3	10		15		

NOTES:  
1. REF PLANS FOR ADDL INFORMATION NOT SHOWN  
2. PAV = PAVILION; EDU = EDUCATION CENTER  
3. C = COMPRESSION FORCE  
4. T = TENSION FORCE

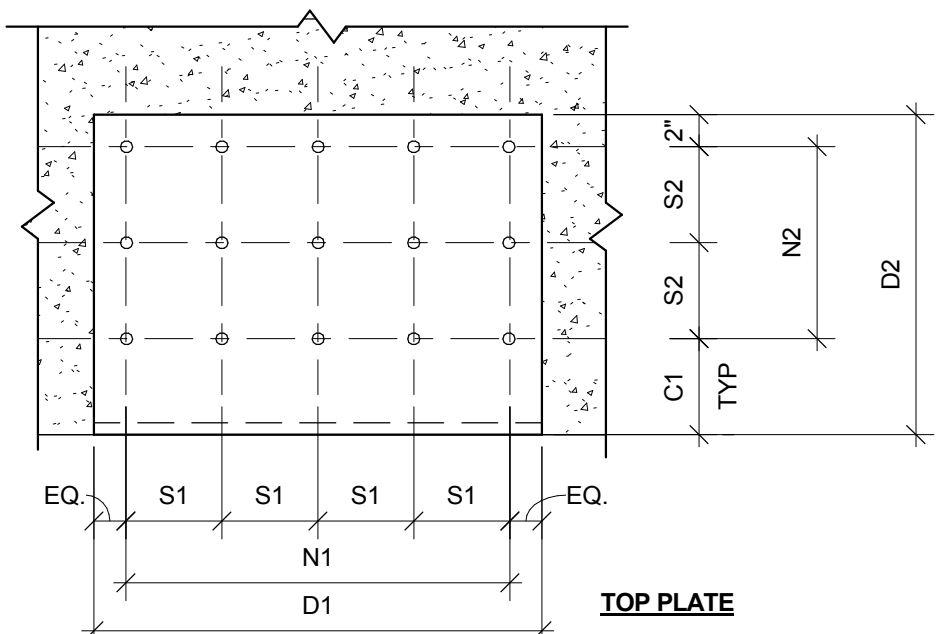
PAVILION - EMBED PLATE SCHEDULE															
CONNECTION MARK	SIDE PLATE THICKNESS (IN)	D1 (IN)	D2 (IN)	D3 (IN)	N1	N2	N3	N4	S1 (IN)	S2 (IN)	S3 (IN)	S4 (IN)	C1 (IN)	C2(IN)	C3(IN)
A	2	60	36	13.5	6	4	16	1	11	10	3.5	-	6	4	3.75
B	2	48	30	13.5	5	3	12	1	11	11	4	-	6	4	2
C	2	48	30	13.5	5	3	12	1	11	11	4	-	6	4	2
D	1.5	40	36	13.5	5	3	10	1	9	14	4	-	6	4	2
E	1	20	12	13.5	4	2	5	1	4	6	4	-	4	4	2
F	3/4	16	12	11.5	4	2	4	1	4	6	4	-	4	3.5	2
G	1.5	36	-	24	-	-	5	3	-	-	7	9	-	3	*
H	1.5	36	-	24	-	-	5	3	-	-	7	9	-	3	*
J	1.5	48	-	24	-	-	7	3	-	-	6.5	9	-	3	*
K	1.5	42	-	24	-	-	4	3	-	-	9	9	-	3	*

NOTES:  
1. EMBEDMENT PLATES TO FOLLOW PROFILE OF CORNER CONDITIONS WITH COMPLETE JOINT PENETRATION WELDS AT SPLICE JOINT.  
ADJUST HEADED STUDS AS REQUIRED TO AVOID INTERFERENCE AT CORNER CONDITION.  
2. COVER ALL FIELD WELDS WITH GALV. PAINT.  
3. \* INDICATES THAT C DIMENSION IS SHOWN ON DETAIL 4/S7.32



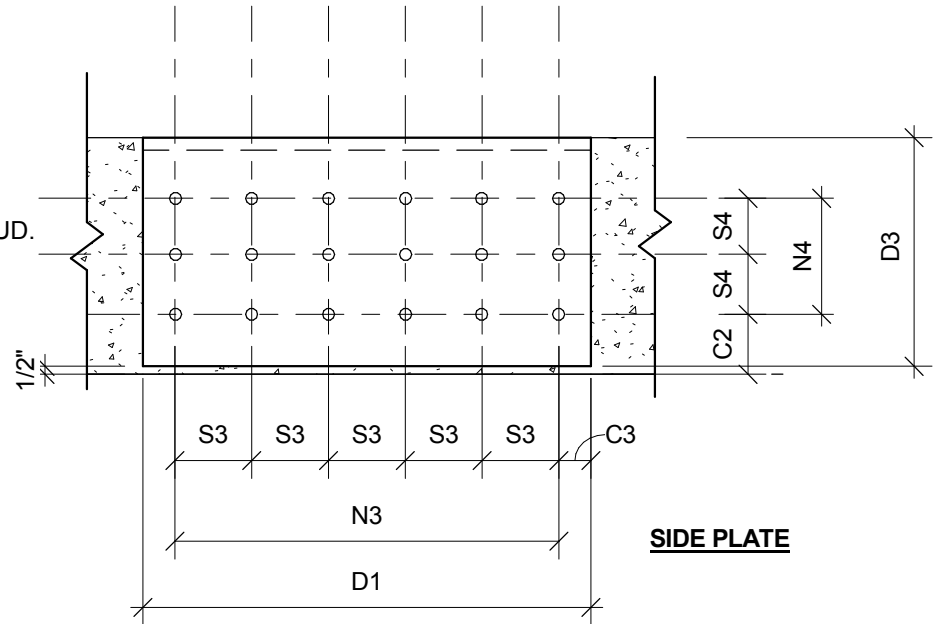
④ PAVILION ROOF - CANOPY TO V-COLUMN CONNECTION  
1" = 1'-0"

ANCHOR TYPE:  
3/4" DIA. x 4" LONG, HEADED STUD.  
TOP PLATE THICKNESS:  
3/4"

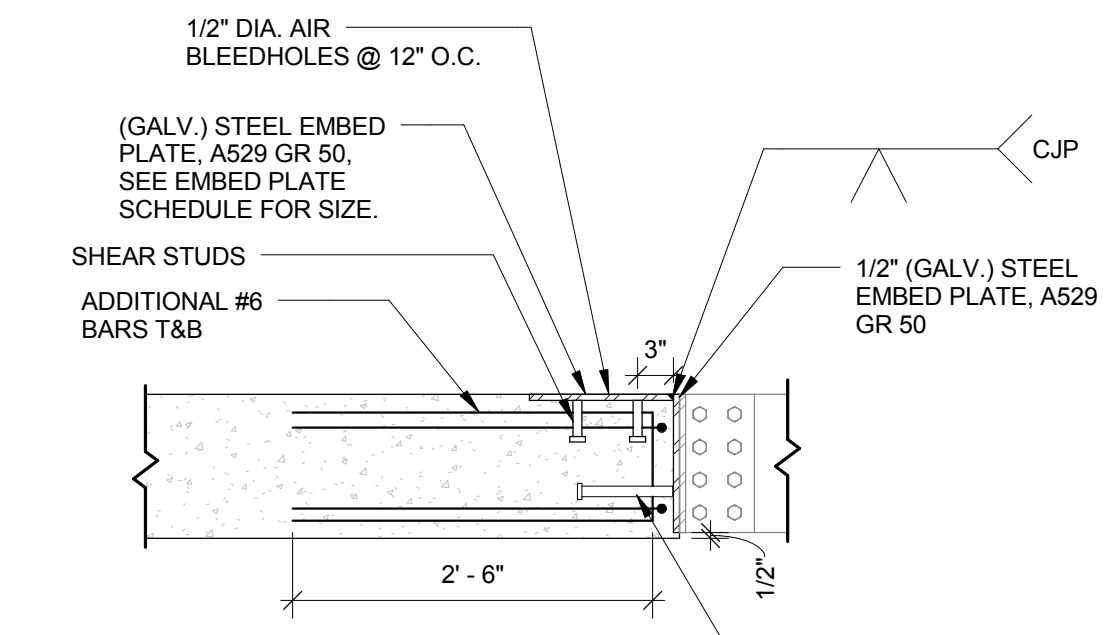


TOP PLATE  
NOTE: TOP PLATE SHALL HAVE 1/2" DIA. AIR BLEEDHOLES @ 12" O.C. EW. (TYP.)

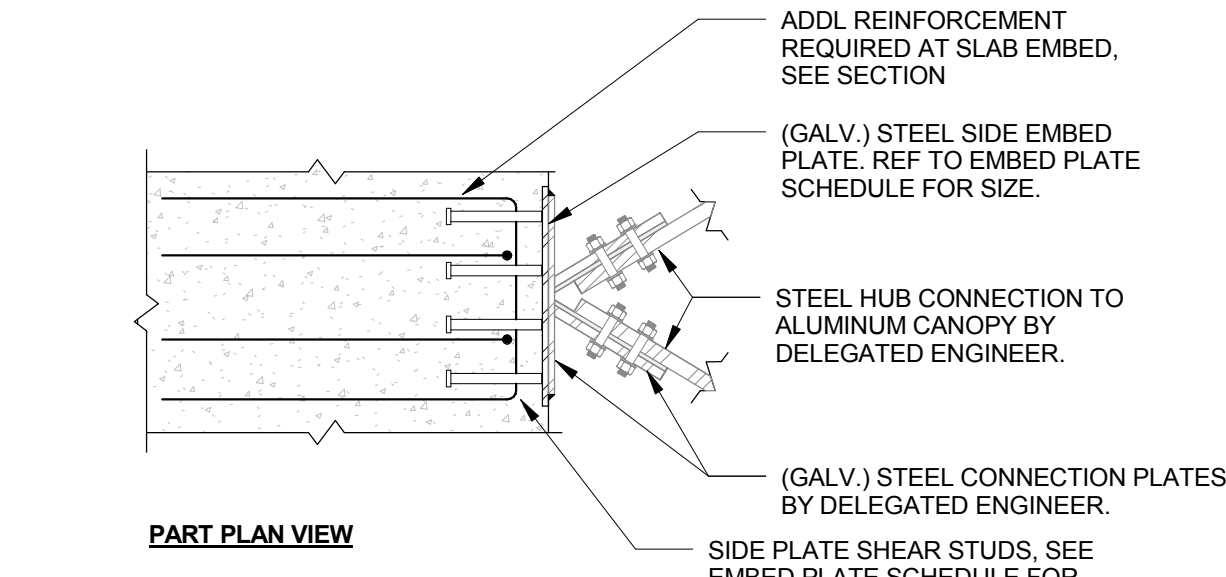
ANCHOR TYPE:  
3/4" DIA. x 8" LONG, HEADED STUD.  
SIDE PLATE THICKNESS:  
REF SCHEDULE



SIDE PLATE

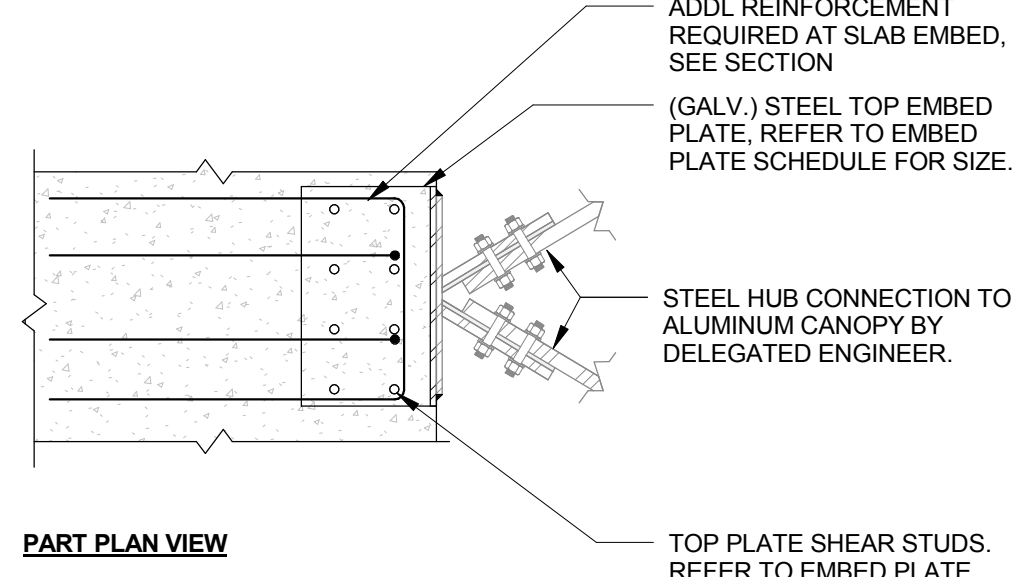


③ SECTION @ TYPICAL EMBED PLATE  
3/4" = 1'-0"



② TYPICAL EMBED PLATE DETAIL @ B.O. SLAB  
3/4" = 1'-0"

NOTE: COVER ALL FIELD WELDS WITH GALV. PAINT.



① TYPICAL EMBED PLATE DETAIL @ T.O. SLAB  
3/4" = 1'-0"

NOTE: COVER ALL FIELD WELDS WITH GALV. PAINT.

TO THE BEST OF THE STRUCTURAL ENGINEER'S KNOWLEDGE, THE PLANS AND SPECIFICATIONS COMPLY WITH THE APPLICABLE MINIMUM CODES AS DETERMINED BY LOCAL AUTHORITY IN ACCORDANCE WITH CHAPTER 553, FLORIDA STATUTES.