

Core Academics

It is the goal of the core academic program to provide opportunities for students of all grade levels to foster mastery of basic skills in reading, language, social studies, mathematics, science, citizenship, health, technology, and other content areas; experience and enhance their awareness and understanding of multi-cultural values, beliefs, and other aspects of society; and become involved in inquiry-based learning expressed by hands-on, minds-on, experiences.

The core academic area is composed of spaces associated with typical academic content areas such as language arts, mathematics, science, and social studies. Spaces include

classrooms, teacher workrooms, restrooms, and materials storage.

Specific spaces associated with the core academics and corresponding illustrations and adjacencies are described herein. Additionally, descriptions of activities and persons to be accommodated as well as design considerations are listed.

Overview

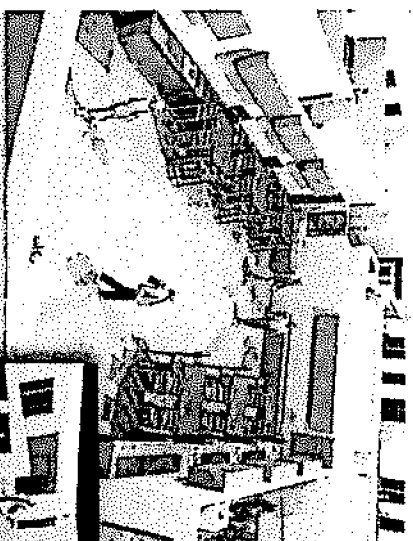
The core academics concept should be organized to facilitate an interdisciplinary approach to instruction. Characteristics of this area are:

- Ability to organize space by teams
 - Instruction and facility space to encourage team and student communication
 - A flexible learning environment that is:
 - ✓ adaptable to change and supportive of different program delivery/organizational patterns
 - ✓ adequately sized with space to support the work of teams and production of student work, and encourages the integration of curricula
- The concepts that will give direction to this interdisciplinary approach are:
- Integrated curricula
 - Performance objectives for students
 - Individualized/intra-dependent learning environments
 - Performance assessment
 - Decentralized/shared decision-making
 - Coordination of services provided to students



In addition to the traditional large and small group instruction, many varied activities take place in the various Core Academic learning areas:

- Writing/composing
- Role playing – skits, acting out situations
- Hands-on projects and activities – individuals and groups
- Oral presentations
- Interactive activities – room-to-room, school-to-school, class-to-community
- Team teaching among all the disciplines
- Group and teamwork activities



SCIENCE LAB

RESOURCE CENTER



Core Academics Space Requirements

Plan A: Centralized Career / Tech Ed

Learning Community	Suggested			
	TS	Quantity	SF	Total
Core Academics				
Classrooms	6	6	850	5,100
Small Resource Room		1	300	300
Resource Room	1	1	850	850
Science Classroom	2	2	900	1,800
Science Lab - Shared		1	1,200	1,200
Science Prep/Storage		1	300	300
Student Production Center [Decentralized Media]		1	1,500	1,500
Instructional Material Storage		1	150	150
Teacher Prep		1	500	500
Student Restroom (male / female)		2	200	400
Cluster	9			12,100
Number of Clusters				6
Totals Core Academic Area	54			72,600
Decentralized Admin (3 Areas Shared btwn Clusters)				
Conference Room		1	250	250
Office		2	150	300
Work/Copy		1	300	300
Staff Restrooms		2	50	100
Each Decentralized Area				950
Number of Decentralized Areas				3
Total Decentralized Administrative Area				2,850



Plan B: Integrated Tech Ed Thematic Focus Program Areas

Learning Community	Suggested			
	TS	Quantity	SF	Total
Core Academics				
Classrooms	6	6	850	5,100
Small Resource Room		1	300	300
Resource Room	1	1	850	850
Science Classroom	2	2	900	1,800
Science Lab - Shared		1	1,200	1,200
Science Prep/Storage		1	300	300
Tech Ed/Thematic Focus Area	2	2	1,200	2,400
Student Production Center [Decentralized Media]		1	1,500	1,500
Instructional Material Storage		1	150	150
Teacher Prep		1	500	500
Student Restroom (male / female)		2	200	400
Cluster	11			14,500
Number of Clusters				6
Totals Core Academic Area	66			87,000
Decentralized Admin (3 Areas Shared btwn Clusters)				
Conference Room		1	250	250
Office		2	150	300
Work/Copy		1	300	300
Staff Restrooms		2	50	100
Each Decentralized Area				950
Number of Decentralized Areas				3
Total Decentralized Administrative Area				2,850



Core Academics Space Descriptions Classrooms

CLASSROOMS	
ACTIVITIES	PERSONS
Individual, small, and large group activities	Students
Storage of materials	Teachers
Project-based learning	Aides
Demonstrations	Volunteers
Computer-based instruction	Paraprofessionals
	Staff

CLASSROOMS		QTY
MECHANICAL	Quiet air conditioning	Yes
	Sink with hot and cold water	1
PLUMBING	Duplex outlet	1 per wall
	Quad outlet @ each data port	1
ELECTRICAL / LIGHTING	Overhead lighting	Yes
	Room darkening capability - dimmer switches	Yes
	Controlled day lighting, banked lighting	Yes
	Mobile tables need variety of ways to set electricity [floor or fixed table]	Yes
	Front row of light, dimmable	Yes
	Voice, data, video outlets at teacher desk	1
	6 data drops with double, triple, or quad Communications Network Outlets	6
TECHNOLOGY	2 data drops at teacher desk area	2
	Single data drop dedicated to wireless, high on wall	1
	Telephone	1
	Intercom	Yes
	Interactive whiteboard with integral computer projector	1
	Ceiling mounted computer projector with retractable screen	Yes
	Laptop computers with carts, shared	26
	Access to voice, video, data ports, and electrical outlets	Yes
	Teacher data port separate from student data ports	Yes
	Audio enhancement	1 system
	Document cameras for each class	Yes

Core Academics Space Descriptions
Classrooms

CLASSROOMS		QTY
FURNITURE / EQUIPMENT	Student work tables, 2 students each	Yes
	Comfortable ergonomic student chairs that allow movement	Yes
	Countertop over base cabinets	Yes
	Lockable overhead cabinets	Yes
	Magnetic marker board with tack strips above whiteboard	Yes
	Bulletin board	Yes
	Shelving	Yes
	Clock	Yes
	Locking storage cabinet with outlet	Yes
	All in One Computer Device	Yes
	Retractable projection screen	Yes
	Flexible or multiple display surfaces	Yes
	Adjustable, lockable, and mobile storage cabinets and shelving	Yes
DOORS & WINDOWS	Flexible furniture: can be used as individual desks or fit together to make tables	Yes
	Double Door with windows or view panel	Yes
	Locking mechanism	Yes
SPECIAL CONSIDERATIONS	Large energy efficient windows that can open to outdoors with blinds & screens	Yes
	Climate control for each classroom	Yes
	Vinyl tile, no scratch flooring	Yes
	Acoustical privacy	Yes
	Walls painted with warm and cool colors	Yes



DeJON

Core Academics Space Descriptions
Resource Room

RESOURCE ROOM	
ACTIVITIES	PERSONS
Individual, small, and large group activities	Teachers
Physical therapy	Aides
Tutoring	Staff
	Volunteers
	Students

RESOURCE ROOM		QTY
MECHANICAL	Quiet air conditioning	Yes
	PLUMBING	1
ELECTRICAL / LIGHTING	Sink with hot and cold water	
	Duplex electrical outlets on each wall	Yes
	Quad outlet @ each data port	Yes
	Overhead lighting	Yes
TECHNOLOGY	Banked lighting	Yes
	Front row of light, dimmable	1
	Telephone	1
	Intercom	Yes
	6 data drops with double, triple, or quad Communications Network Outlets	Yes
	Access to voice, video, data ports, and electrical outlets	Yes

Core Academics Space Descriptions
Resource Room

RESOURCE ROOM		QTY
FURNITURE / EQUIPMENT	Student work tables	1
	Comfortable ergonomic student chairs	1 / 25 SF
	Magnetic whiteboard	8LF
	Ceiling mounted data projector	1
	Retractable projection screen	1
	Bulletin board	4 LF
	Clock	1
	Lockable storage cabinets	Yes
	Flexible surfaces	Yes
	Abundant shelving	Yes
DOORS & WINDOWS	Flexible or multiple display surfaces	Yes
	Door with windows or view panel	Yes
	Locking mechanism	Yes
	Large energy efficient windows to outdoors with blinds	Yes
SPECIAL CONSIDERATIONS	Windows to corridor and / or Learning Community	Yes
	Spill and stain-resistant flooring	Yes
	Walls painted with warm / cool colors	Yes



Core Academics Space Descriptions

Science Lab

SCIENCE LAB	
ACTIVITIES	PERSONS
Cooperative learning	Students
Hands-on experiments	Teachers
Demonstrations	Aides
Long-term projects	Volunteers
Independent study	Staff
Interdisciplinary team teaching	
Computer-based instruction	

SCIENCE LAB		QTY
MECHANICAL	Fume hood	Yes
	Air conditioning	Yes
	Exhaust fan	Yes
	Gas at each sink	Yes
PLUMBING	Access to water, air, electric, and gas at every lab station	Yes
	Sinks with sliding / lockable cover (possibly with quick disconnects)	Yes
	Eye washing station, shower station, and sprinkler system	Yes
	Front row of light, dimmable	Yes
ELECTRICAL / LIGHTING	Quad outlet @ each data port	Yes
	6 data drops with double, triple, or quad Communications Network Outlets	Yes
	Banked lighting	Yes
	Controlled day lighting	Yes
	Room darkening capability	Yes
	Access to voice, video, data ports, and electrical outlets at lab stations	Yes
	Ceiling-mounted computer projector with retractable screen	Yes
	Localized routers for computer WIFI wireless network access	Yes
TECHNOLOGY	Interactive whiteboard w/integral computer projector	1
	Audio enhancement	1 system
	Voice, data, video outlets at teacher desk	1
	6 data drops with double, triple, or quad Communications Network Outlets	6
	2 data drops at teacher desk area	2
	Single data drop dedicated to wireless, high on wall	1
	Analog telephone	Yes
	Intercom	Yes
	Laptop computers with carts, shared	1 per student



Core Academics Space Descriptions

Science Lab

SCIENCE LAB		QTY
FURNITURE / EQUIPMENT	Flexible or multiple display surfaces	Yes
	Magnetic whiteboard with tack strips above	Yes
	Lab seating	Yes
	Hanging display area [i.e. atom models, DNA models, cells, art projects, etc.]	Yes
	Easels	Yes
	Mobile Labs	Yes
	Equipment storage / display cabinets	Yes
	Students work tables, 4 students each, 4' x 6'	Yes
	Lab stools	24
	Countertop over lockable base cabinets	Perimeter
	Lockable overhead cabinets	Perimeter
	Bulletin board	24 LF
	Shelving	24 LF
	Clock	Yes
	Locking storage cabinet	6 LF
DOORS & WINDOWS	All in One Device	1
	Teacher demonstration desk	Yes
	Equipment storage / display cabinets	6 LF
	Retractable projection screen	1
	View panel in double door	Yes
SPECIAL CONSIDERATIONS	Windows with blinds to control natural lighting	Yes
	Screens on windows	Yes
	Spill and stain resistant flooring	Yes
	Accessible to science prep area and storage	Yes
	Fire blankets and first aid kits	Yes
	Meet OSHA requirements for science	Yes
	Climate control for each classroom	Yes
	Lamps	Yes
	Copier / scanner / fax	Yes
	Bio lab, physical sciences, chemical lab	Yes
	Place to store / display projects	Yes
	Vandal and acid resistant surfaces	Yes
	Master shut-off switch for water, gas, and electricity	Yes
	Flip down gas outlets to regain table-top space	Yes
	Secure gas outlets below table-top with sliding, locking cover	Yes
	General exhaust fan to outside	Yes



Core Academics Space Descriptions

Science Prep / Storage

SCIENCE PREP STORAGE	
ACTIVITIES	PERSONS
Staff meetings	Teachers
Lesson planning and grading	Aides
Scheduling of appointments	Volunteers
Record keeping	Staff
Development and review of teacher materials	
Lab preparations	
Chemical (acid) storage	
Flammable storage	
Storage of refrigerated items	

SCIENCE PREP STORAGE		QTY
MECHANICAL	Fume hood	Yes
	Exhaust fan	Yes
PLUMBING	Quad outlet @ each data port	Yes
	For Dishwasher	Yes
	Eye washing station, shower station, and sprinkler system	Yes
ELECTRICAL / LIGHTING	Duplex electrical outlets on each wall	Yes
	Overhead lighting	Yes
TECHNOLOGY	Access to voice, video, data ports, and electrical outlets	Yes



Core Academics Space Descriptions
Science Prep / Storage

SCIENCE PREP STORAGE

		QTY
FURNITURE / EQUIPMENT	Lockable storage cabinets	Yes
	Dishwasher	Yes
	Abundant shelving	Yes
	Flexible or multiple display surfaces	Yes
	Chemical storage cabinet	Yes
	Adequate counter-top space for small appliances and production equipment	Yes
DOORS & WINDOWS	View panel at door	Yes
	Lockable	Yes
SPECIAL CONSIDERATIONS	Spill and stain resistant flooring	Yes
	Accessible to Science Lab / Classroom	Yes
	Vandal and acid resistant surfaces	Yes
	Layout to maximize storage and efficiency	Yes
	Temperature and humidity control	Yes
	Secure	Yes
	Fire safety equipment	Yes
	Acid storage cabinet	Yes
	Nitric acid storage	Yes
	Flammable storage	Yes
	Corrosives storage	Yes



Core Academics Space Descriptions
Student Production Center

STUDENT PRODUCTION CENTER	
ACTIVITIES	PERSONS
Reading	Students
Circulation of materials and resources	Individual students for research
Whole group and small group instruction	Media specialist
Provide meeting areas	Community patrons for after school hours
Research	Volunteers
Processing new media	Teachers
	Technology Information Specialist

STUDENT PRODUCTION CENTER		QTY
MECHANICAL	No special requirements	
PLUMBING	No special requirements	
ELECTRICAL / LIGHTING	Multiple duplex electrical outlets on each wall	Yes
	Full spectrum lighting	Yes
TECHNOLOGY	Ability to control specific lighting areas; dimmable	Yes
	Telephone/intercom/voicemail port	Yes
	Video and data ports	Yes
	Quad outlet adjacent to each data port	Yes
	Wireless laptops with carts for battery recharging	Yes
	Electronic surveillance system	Yes
	Interactive whiteboards, computer projection opportunities throughout the room	Yes



Core Academics Space Descriptions
Student Production Center

STUDENT PRODUCTION CENTER		QTY
FURNITURE / EQUIPMENT	Bookshelves, some portable	Yes
	Portable, lightweight 4-person tables with chairs	Yes
	Soft seating for recreational reading	20
	Scanner	1
	Computer tables with chairs	Yes
	Clock	Yes
	Copier / printer	1
	Printers and printer tables	Yes
	Networked computers with access to programs and online-card catalog	Yes
	Computer projector and mounted screen	2
DOORS & WINDOWS	Door: double doors, large view panel	Yes
	Windows: operable, with blinds to allow controlled natural lighting	Yes
SPECIAL CONSIDERATIONS	Controlled natural light	Yes
	Open flow for traffic in reference/ professional/periodicals area	Yes
	Auditory privacy	Yes
	Provide method to darken room for AV presentations	Yes
	During/ after school hours access while maintaining security in the remainder of the school	Yes
	Magnetic marker boards	Yes
	Glass walls to corridor	
	Wireless, portable microphone to use when teaching	Yes
	Laptop charging stations	Yes



Dejong

Core Academics Space Descriptions

Conference Room

CONFERENCE ROOM

ACTIVITIES	PERSONS
Small group meetings/conferences	Administrators
	Counselors
	Parents
	Students
	Visitors
	Staff

CONFERENCE ROOM

QTY

MECHANICAL	Air conditioning	Yes
PLUMBING	Sink with hot and cold water	Yes
ELECTRICAL / LIGHTING	Multiple duplex electrical outlets on each wall	Yes
	Duplex outlet	1
	Overhead lighting [dimable]	Yes
TECHNOLOGY	Telephone/intercom/voicemail port	Yes
	Video and data ports	Yes
	Quad outlet adjacent to each data port	Yes
	Whiteboard screen on whole wall	Yes
FURNITURE / EQUIPMENT	Countertop with sink, base, and wall cabinets	Yes
	Ceiling mounted data projector	1
	Modular conference table	1
	Conference chairs	1/25 SF
	Credenza	Yes
	Magnetic marker board	Yes
	Retractable projection screen	1
	Tack board	Yes
	Bulletin board	4 LF
	Bookshelves	Yes
	Clock	1
DOORS & WINDOWS	Door: large view panel with optional sidelight	Yes
	Windows: to hallway with mini-blinds	Yes
SPECIAL CONSIDERATIONS	Consideration for sound transfer	Yes

Core Academics Space Descriptions

Offices

OFFICES	
ACTIVITIES	PERSONS
Meeting with students	School staff
	Student population

OFFICES		QTY
MECHANICAL	Quiet air conditioning	Yes
PLUMBING	No special requirements	
ELECTRICAL / LIGHTING	Duplex electrical outlets on each wall	Yes
	Quad outlet at each data port	Yes
TECHNOLOGY	Telephone/Intercom/voicemail port	Yes
	Video and data ports	Yes
	Duplex outlet	Yes
	Quad outlet @ each data port	Yes
	Intercom	Yes
FURNITURE / EQUIPMENT	Flexible surfaces	Yes
	Legal size file lateral drawer	Yes
	6 data drops with double, triple, or quad Communications Network Outlets	1
	Desk chair	1
	Guest chairs	2
	Lamps	Yes
	Bookshelves	18LF
	Marker board	4LF
	Laptop computer	1
	Printer	1
	Locking file cabinet, 4 drawer	1 to 2
	Bulletin board	4LF
	Clock	1
DOORS & WINDOWS		Yes
Door: view panel		
SPECIAL CONSIDERATIONS		Yes
Bright, soft lighting		



DeJON



Core Academics Space Descriptions
Instructional Material Storage

INSTRUCTIONAL MATERIAL STORAGE		
ACTIVITIES	PERSONS	
Storage of instructional team materials	Teachers	
	Staff	

INSTRUCTIONAL MATERIAL STORAGE		QTY
MECHANICAL	No Special Requirements	
PLUMBING	No Special Requirements	
ELECTRICAL & LIGHTING	Duplex outlets on each wall	Yes
	Overhead lighting	Yes
TECHNOLOGY	No Special Requirements	
FURNITURE / EQUIPMENT	Casework to include:	
	Countertop with base and wall cabinets	Yes
	Lockable storage cabinets	Yes
	Abundant wall shelving	Yes
DOORS & WINDOWS	Solid door	Yes
	Keypad access	Yes
SPECIAL CONSIDERATIONS	Vinyl tile	Yes



Core Academics Space Descriptions

Work / Copy

WORK / COPY

ACTIVITIES	PERSONS
Copying	Teachers
Collating	Staff
Laminating, book making, poster making	
General office work	

WORK / COPY

QTY

MECHANICAL

Quiet air conditioning

Yes

PLUMBING

No special requirements

ELECTRICAL / LIGHTING

Duplex outlet

Quad outlet @ each data port

Yes
1

TECHNOLOGY

Telephone/intercom/voicemail port

Yes

Video and data ports

Yes

Quad outlet adjacent to each data port

Yes

Intercom

Yes

FURNITURE / EQUIPMENT

Work tables

2

Counter over base cabinets

16 LF

Overhead cabinets

8 LF

Chairs

2

Computer workstations

1

Wall shelving

8 LF

Lockable storage cabinet

Yes

Fax machine

1

Copier w/Sorter

1

B&W and color printer

1

Scanner

1

Laminating machine

1

Paper storage, shredder, and cutter

Yes

Marker board

8 LF

Tack board

Yes

Bookshelves

Yes

Clock

1

DOORS & WINDOWS

Door: large view panel with optional sidelight

Yes

SPECIAL CONSIDERATIONS

Consideration for sound transfer

Yes

Tile flooring

Yes

Core Academics Space Descriptions

Staff Restrooms

STAFF RESTROOMS

ACTIVITIES

PERSONS

Personal hygiene

Teachers

Administrators

STAFF RESTROOMS

QTY

MECHANICAL

Exhaust fan

Yes

PLUMBING

Sink with hot and cold water

Yes

Toilet

Yes

ELECTRICAL / LIGHTING

Duplex electrical outlets on each wall

Yes

TECHNOLOGY

No special requirements

FURNITURE / EQUIPMENT

Casework to include cabinet with mirror

Yes

DOORS & WINDOWS

Solid door

Yes

SPECIAL CONSIDERATIONS

Hand-free dispensers

Yes



Core Academics Space Descriptions

Teacher Prep

TEACHER PREP

ACTIVITIES	PERSONS
Teacher planning and collaboration	Teachers
Team meetings	Staff
Professional development	Paraprofessionals
Recordkeeping	
Preparation of teaching materials	
Faculty lunch	
Storage	

TEACHER PREP

TEACHER PREP		QTY
MECHANICAL	Quiet air conditioning	Yes
PLUMBING	Sink with hot and cold water	Yes
ELECTRICAL / LIGHTING	Duplex outlet	Yes
	Quad outlet @ each data port	Yes
	Controlled day lighting	Yes
TECHNOLOGY	Access to voice, video, data ports, and electrical outlets	Yes
	Intercom	Yes

Core Academics Space Descriptions
Teacher Prep

TEACHER PREP		QTY
FURNITURE / EQUIPMENT	Teacher desks	12
	Lockable storage cabinets and closets	Yes
	Flexible surfaces	Yes
	Adequate counter top space for small appliances and production equipment	Yes
	Computer station with Internet access	Yes
	Work tables	2
	Conference chairs	Yes
	Conference table	Yes
	Abundant shelving	Yes
	Layout of shelving to maximize efficiency	Yes
	File cabinet, 4 drawer	12
	Refrigerator w/ ice maker	Yes
	Microwave	Yes
	Laptop computer	6
	Printer	1
DOORS & WINDOWS	Magnetic Marker board	Yes
	Bulletin board	4 LF
	Clock	1
	Door: view panel	Yes
SPECIAL CONSIDERATIONS	Acoustical privacy	Yes

Core Academics Space Descriptions
Student Restroom

STUDENT RESTROOMS		
ACTIVITIES		PERSONS
Personal hygiene	Students	

STUDENT RESTROOMS		QTY	
MECHANICAL	Exhaust fan		Yes
PLUMBING	Sinks with hot and cold water		Yes
	Toilets		Yes
ELECTRICAL / LIGHTING	Duplex electrical outlets on each wall		Yes
TECHNOLOGY	No special requirements		
FURNITURE / EQUIPMENT	Casework to include cabinet with mirror		Yes
DOORS & WINDOWS	Door: no view panel		Yes
	Windows: none		
SPECIAL CONSIDERATIONS	Hand-free dispensers		Yes

