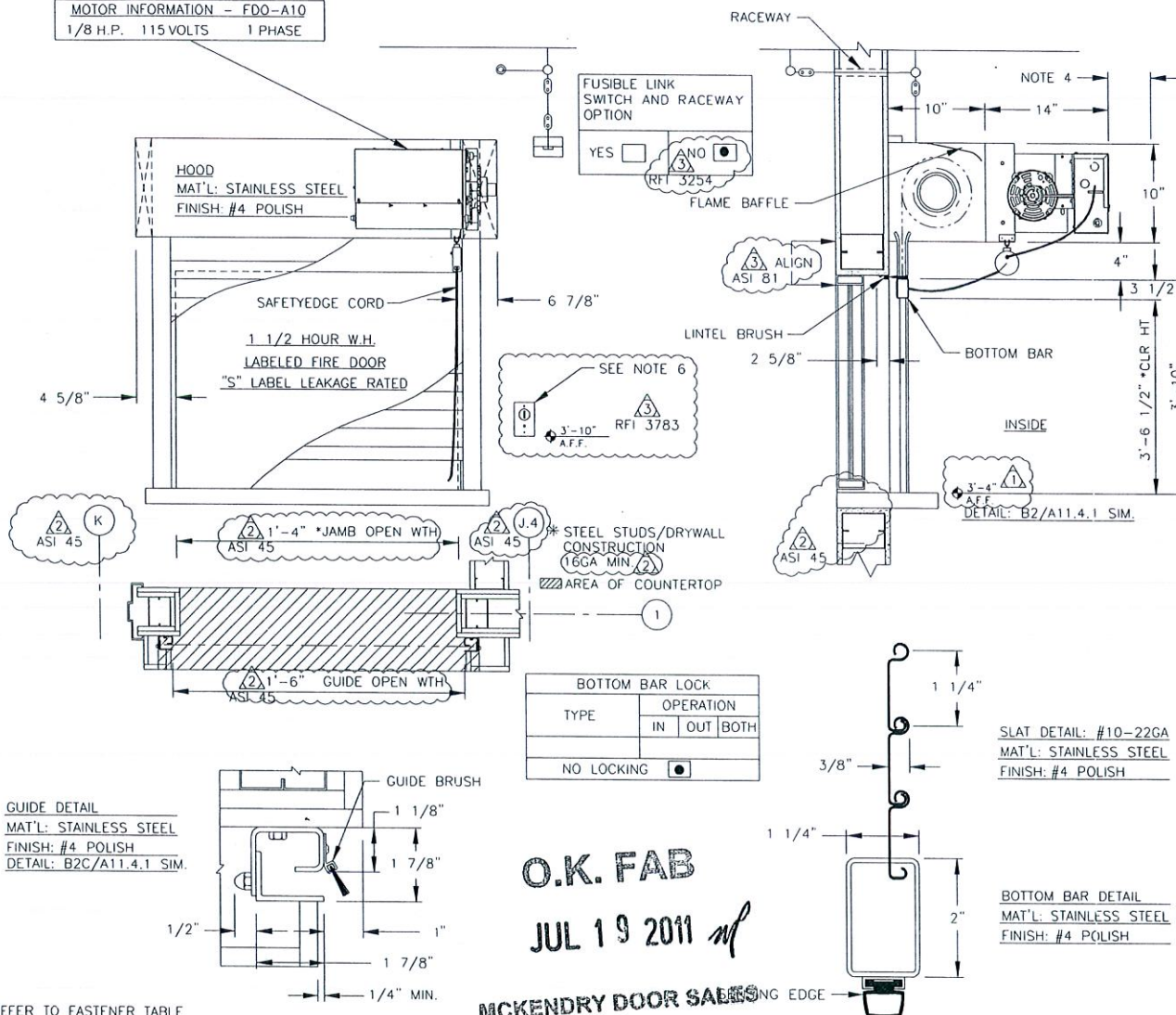


MOTOR INFORMATION - FDO-A10
1/8 H.P. 115 VOLTS 1 PHASE



NOTE: REFER TO FASTENER TABLE SHOWN IN THE INSTALLATION MANUAL FOR CORRECT FASTENERS TO BE APPLIED BASED ON SUPPORT TYPE REQUIRED.

SMOKE CONTROL DOOR || FDO-A10 MOTOR || VERT MNT || FACEMTD

NOTES:

- GENERAL SPECIFICATIONS SEE SHEET 1.
- APPROX. WT. OF DOOR IS 300 LBS.
- THE MANUFACTURER ASSUMES THAT THE FIRE DOOR(S), THE WALL AND/OR MOUNTING CONDITIONS, ALONG WITH THE FASTENERS USED IN ATTACHING THE DOOR(S) TO THE STRUCTURE MEET WITH THE "AUTHORITY HAVING JURISDICTION'S" APPROVAL. FOR FURTHER REFERENCE CONSULT N.F.P.A. BULLETIN 80.
- CONSULT WITH LOCAL CODES / INSPECTOR OF RECORD REGARDING CLEARANCE REQUIREMENTS FOR ELECTRICAL PANEL WIRING.
- PROVIDE CORD REEL
- PROVIDE 1 NEMA 1 FLUSH KEY ST(S) W/BEST CYL MMTC: HBFS
- SEE SHEET 6 FOR COUNTER TOP DETAILS.

FAB PER Agreement w/McCarthy - SEE EMAIL

DIMENSIONS AND CLEARANCES AS NOTED BY ASTERISK (*) MUST BE FIELD CHECKED.

VERIFIED BY: _____ ON: _____

MAKE	HAND	ARCH. MARK	DOOR MARK
1	AS SHOWN	1.070.34B LVL 1 AREA N A3.1N	R5
	OPPOSITE		
3	SB	06/03/11	AS NOTED
2	SB	03/29/11	PER RTRND SBMTL / AS NOTED
1	SB	01/12/11	PER RTRND SBMTL / AS NOTED
	SB	06/30/10	ORIGINAL DRAWING
NO.	BY	DATE	REVISION



JOB: CHOC HOSPITAL - TOWER II
CONTRACTOR: MCCARTHY
ARCHITECT: FKP ARCHITECTS
DISTRIBUTOR: MCKENDRY DOOR SALES

DRAWING NO. 0811040203

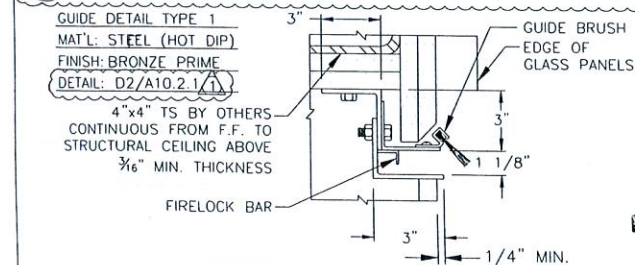
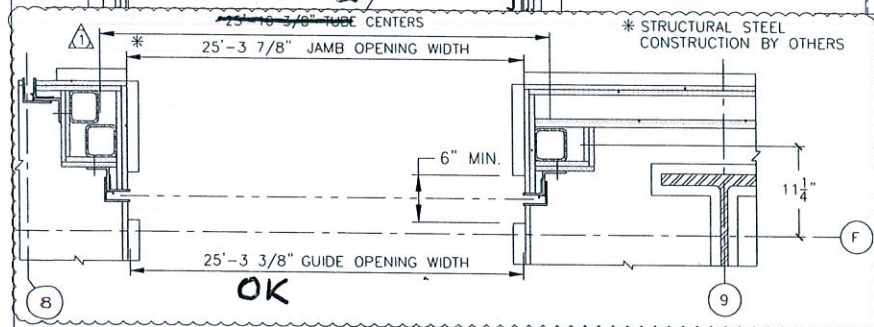
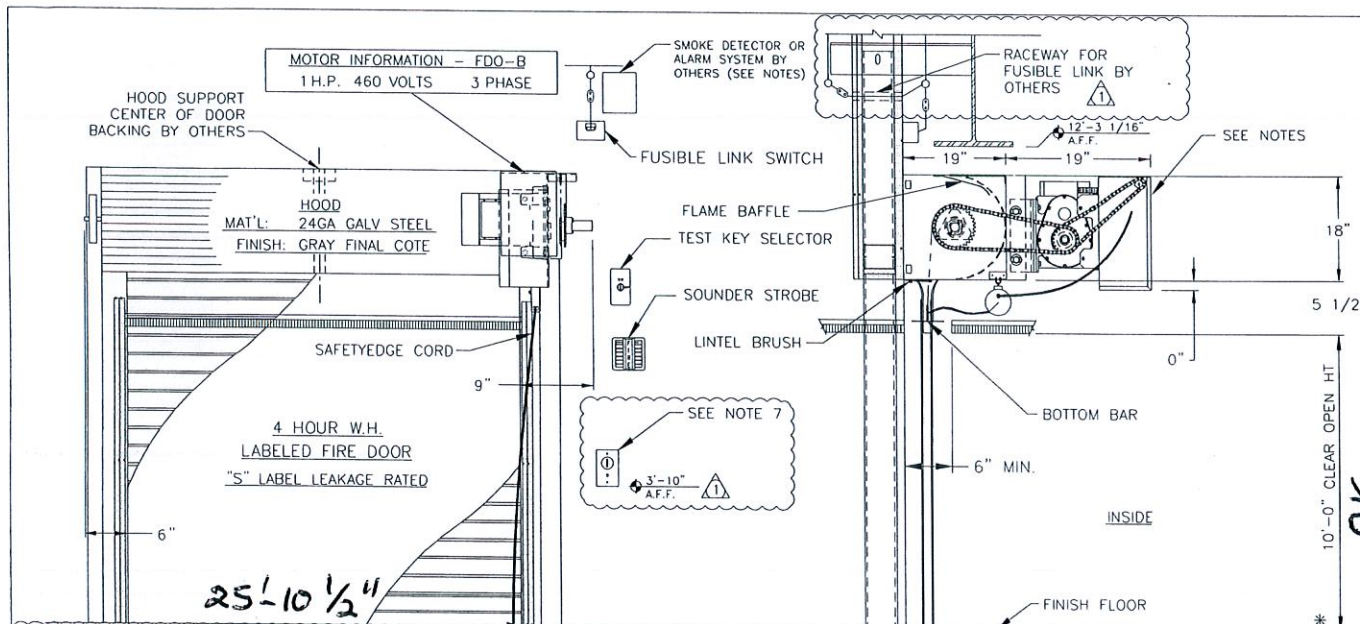
5 OF 38

LEGEND
[A] RECOMMENDATION / DEVIATION FROM CONTRACT
DOCS / CLARIFICATION - SEE SUBMITTAL
NARRATIVE SHEET

O.K. FAB

JUL 19 2011

MCKENDRY DOOR SALES

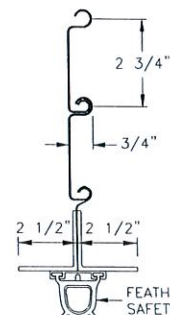


O.K. FAB

APR 27 2011

MCKENDRY DOOR SALES

BOTTOM BAR LOCK			
TYPE	OPERATION		
	IN	OUT	BOTH
NO LOCKING			



SLAT: #4-18GA
MAT'L: GALV STEEL
FINISH: GRAY FINAL COTE
FIRELOCKS: YES

BOTTOM BAR DETAIL
MAT'L: STEEL (HOT DIP)
FINISH: BRONZE PRIME

NOTES:

- GENERAL SPECIFICATIONS SEE SHEET 1.
- APPROX. WT. OF DOOR IS 3,071 LBS.
- THE MANUFACTURER ASSUMES THAT THE FIRE DOOR(S), THE WALL AND/OR MOUNTING CONDITIONS, ALONG WITH THE FASTENERS USED IN ATTACHING THE DOOR(S) TO THE STRUCTURE MEET WITH THE "AUTHORITY HAVING JURISDICTION'S" APPROVAL. FOR FURTHER REFERENCE CONSULT N.F.P.A. BULLETIN 80.
- SMOKE DETECTOR AND/OR ALARM SYSTEM TO PROVIDE DRY CONTACTS.
- CONSULT WITH LOCAL CODES / INSPECTOR OF RECORD REGARDING CLEARANCE REQUIREMENTS FOR ELECTRICAL PANEL WIRING.
- PROVIDE CORD REEL
- PROVIDE 1 NEMA 1 FLUSH KEY ST(S) W/BEST CYL MMTC: HBFS
- MOTOR BY LIFT MASTER.

DIMENSIONS AND CLEARANCES AS NOTED BY
ASTERISK (*) MUST BE FIELD CHECKED.

VERIFIED BY: **BP/BG** ON: **4-11-11**

MAKE	HAND	ARCH. MARK	DOOR MARK
	AS SHOWN	2.004.00.CA LVL 2-ABEA F A3.2E 1	RG
1	OPPOSITE		LG

3			
2			
1	SB	01/12/11	PER RTRND SBMTL / AS NOTED
	SB	06/29/10	ORIGINAL DRAWING
NO.	BY	DATE	REVISION



JOB: CHOC HOSPITAL - TOWER II
CONTRACTOR: MCCARTHY
ARCHITECT: FKP ARCHITECTS
DISTRIBUTOR: MCKENDRY DOOR SALES

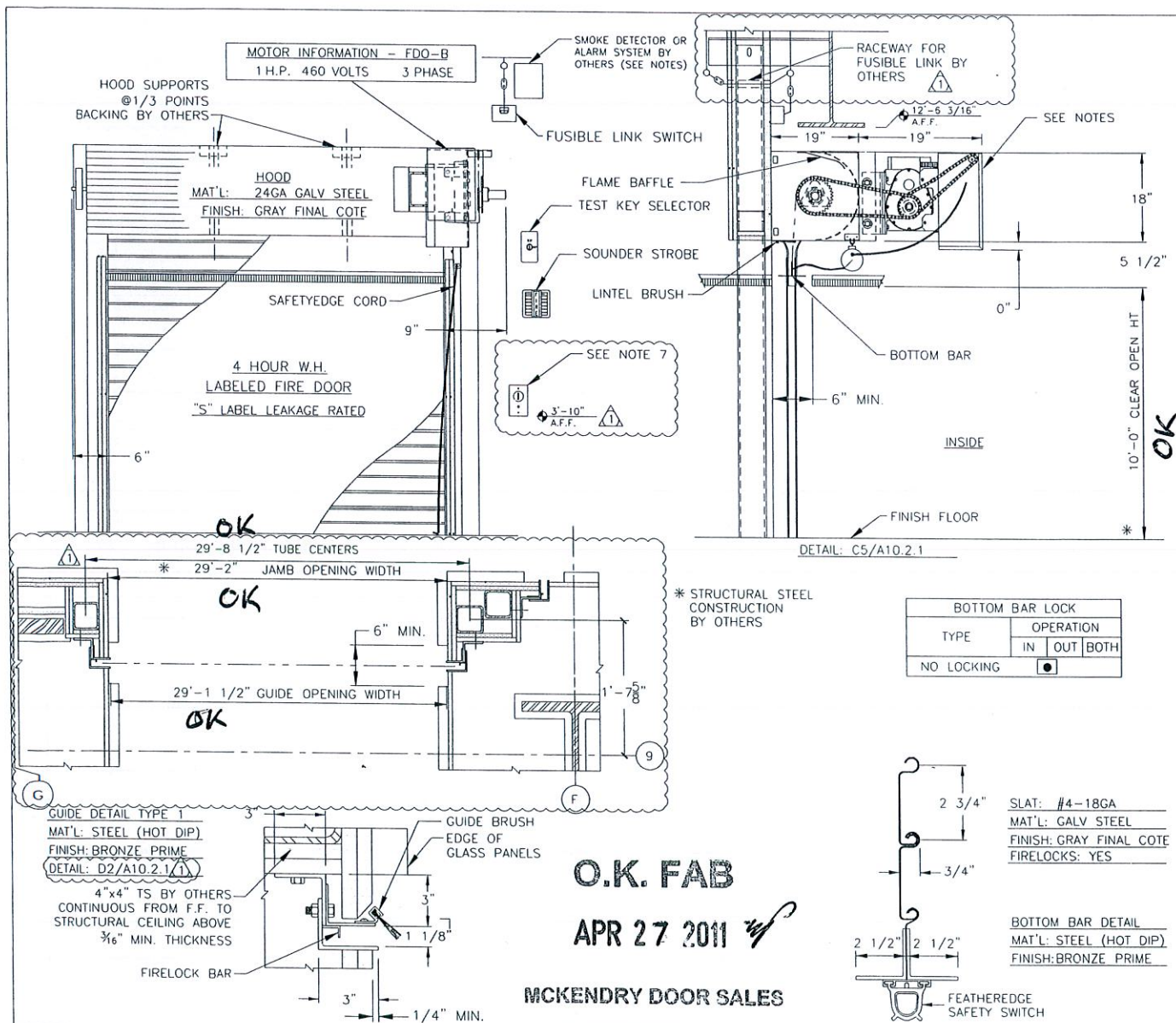
DRAWING NO. 0811040203

7 OF 38

NOTE: REFER TO FASTENER TABLE
SHOWN IN THE INSTALLATION
MANUAL FOR CORRECT FASTENERS
TO BE APPLIED BASED ON SUPPORT
TYPE REQUIRED.

LEGEND
[A] RECOMMENDATION / DEVIATION FROM CONTRACT
DOCS / CLARIFICATION - SEE SUBMITTAL
NARRATIVE SHEET

FIRE DOOR || FDO-B MOTOR || FACEMTD



NOTES:

01. GENERAL SPECIFICATIONS SEE SHEET 1.
02. APPROX. WT. OF DOOR IS 3,543 LBS.
03. THE MANUFACTURER ASSUMES THAT THE FIRE DOOR(S), THE WALL AND/OR MOUNTING CONDITIONS, ALONG WITH THE FASTENERS USED IN ATTACHING THE DOOR(S) TO THE STRUCTURE MEET WITH THE "AUTHORITY HAVING JURISDICTION'S" APPROVAL. FOR FURTHER REFERENCE CONSULT N.F.P.A. BULLETIN 80.
04. SMOKE DETECTOR AND/OR ALARM SYSTEM TO PROVIDE DRY CONTACTS.
05. CONSULT WITH LOCAL CODES / INSPECTOR OF RECORD REGARDING CLEARANCE REQUIREMENTS FOR ELECTRICAL PANEL WIRING.
06. PROVIDE CORD REEL
07. PROVIDE 1 NEMA 1 FLUSH KEY ST(S) W/BEST CYL MMTC: HBFS
08. MOTOR BY LIFT MASTER.

DIMENSIONS AND CLEARANCES AS NOTED BY ASTERISK (*) MUST BE FIELD CHECKED.

VERIFIED BY: BP/Bea ON: 4/16/11

MAKE	HAND	ARCH. MARK	DOOR MARK
1	AS SHOWN	2.004.00.CB LVL 2 AREA E A3.2E	R7
	OPPOSITE		

NO.	BY	DATE	REVISION
3			
2			
1	SB	01/12/11	PER RTRND SBMTL / AS NOTED
	SB	06/29/10	ORIGINAL DRAWING



JOB: CHOC HOSPITAL - TOWER II
CONTRACTOR: MCCARTHY
ARCHITECT: FKP ARCHITECTS
DISTRIBUTOR: MCKENDRY DOOR SALES

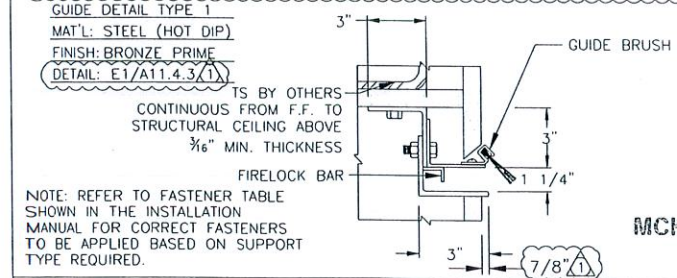
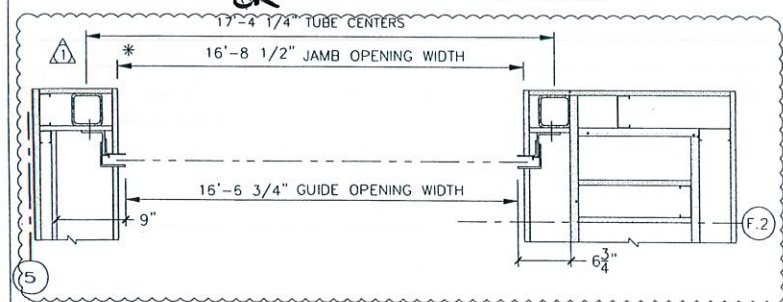
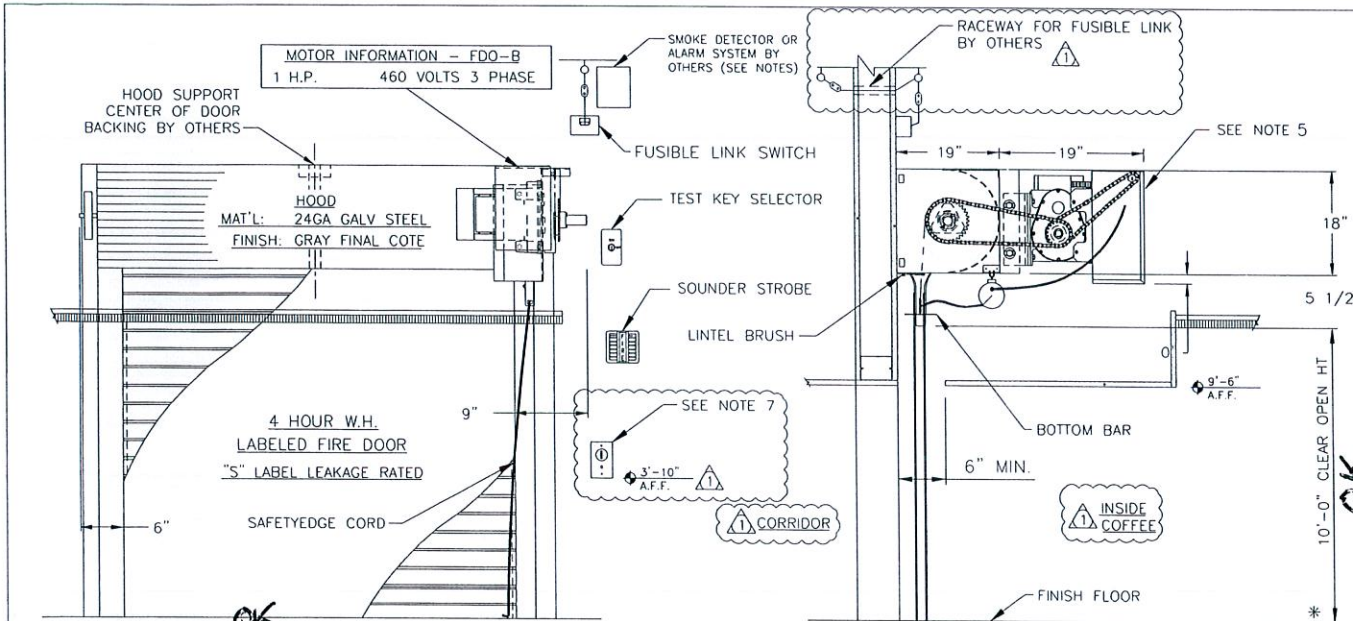
DRAWING NO. 0811040203

8 OF 38

NOTE: REFER TO FASTENER TABLE SHOWN IN THE INSTALLATION MANUAL FOR CORRECT FASTENERS TO BE APPLIED BASED ON SUPPORT TYPE REQUIRED.

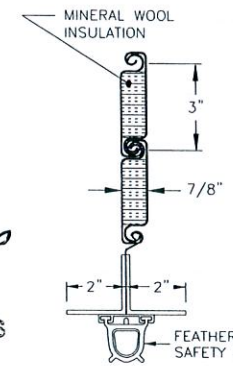
LEGEND
[A] RECOMMENDATION / DEVIATION FROM CONTRACT
DOCS / CLARIFICATION - SEE SUBMITTAL NARRATIVE SHEET

FIRE DOOR || FDO-B MOTOR || FACEMTD



* STRUCTURAL STEEL CONSTRUCTION BY OTHERS

BOTTOM BAR LOCK		
TYPE	OPERATION	
	IN	OUT BOTH
NO LOCKING	<input type="checkbox"/>	<input checked="" type="checkbox"/>



SLAT: #45-22/22GA
MAT'L: GALV STEEL
FINISH: GRAY FINAL COTE
FIRELOCKS: YES

BOTTOM BAR DETAIL
MAT'L: STEEL (HOT DIP)
FINISH: BRONZE PRIME

O.K. FAB

APR 27 2011

MCKENDRY DOOR SALES

FIRE DOOR || FDO-B MOTOR || FACEMTD

NOTES:

01. GENERAL SPECIFICATIONS SEE SHEET 1.
02. APPROX. WT. OF DOOR IS 2,333 LBS.
03. THE MANUFACTURER ASSUMES THAT THE FIRE DOOR(S), THE WALL AND/OR MOUNTING CONDITIONS, ALONG WITH THE FASTENERS USED IN ATTACHING THE DOOR(S) TO THE STRUCTURE MEET WITH THE "AUTHORITY HAVING JURISDICTION'S" APPROVAL. FOR FURTHER REFERENCE CONSULT N.F.P.A. BULLETIN 80.
04. SMOKE DETECTOR AND/OR ALARM SYSTEM TO PROVIDE DRY CONTACTS.
05. CONSULT WITH LOCAL CODES / INSPECTOR OF RECORD REGARDING CLEARANCE REQUIREMENTS FOR ELECTRICAL PANEL WIRING.
06. PROVIDE CORD REEL
07. PROVIDE 1 NEMA 1 FLUSH KEY ST(S) W/BEST CYL MMTC: HBFS
08. MOTOR BY LIFT MASTER.

DIMENSIONS AND CLEARANCES AS NOTED BY ASTERISK (*) MUST BE FIELD CHECKED.

VERIFIED BY: **BP/ BG** ON: **4/11/11**

MAKE	HAND	ARCH. MARK	DOOR MARK
	AS SHOWN		
1	OPPOSITE	2.061.00.AB LEVEL 2, AREA L COFFEE KIOSK A3.2L	L10

NO.	BY	DATE	REVISION
3			
2			
1	SB	01/12/11	PER RTRND SBMTL / AS NOTED
	SB	06/29/10	ORIGINAL DRAWING



JOB: CHOC HOSPITAL - TOWER II
CONTRACTOR: MCCARTHY
ARCHITECT: FKP ARCHITECTS
DISTRIBUTOR: MCKENDRY DOOR SALES
DRAWING NO. 0811040203

LEGEND
[A] RECOMMENDATION / DEVIATION FROM CONTRACT
DOCS / CLARIFICATION - SEE SUBMITTAL
NARRATIVE SHEET

\\JOB FILE FOLDERS\0801090149 - 0812300051\0811040203 CHOC Hospital Tower II\Engineering\Submittals\10 - Updated Set per Recent RFI\12_R16_Rev3.dwg, Model, 6/3/2011 3:04:01 PM

MOVE COPPER PIPE

all To Be moved per revision
6/16/11

G.C. TO
MOVE SPRINKLER

Reverse Handing
W/OLD RH

Copper Pipe

MOTOR INFORMATION -- FDO-B
1 1/2 H.P. 115 VOLTS 1 PHASE

SMOKE DETECTOR OR
ALARM SYSTEM BY
OTHERS (SEE NOTES)

1.9

14" Sprinkler

FUSIBLE LINK SWITCH

TEST KEY SELECTOR

SOUNDER STROBE

INTEL BRUSH

SEE NOTE 7

RFI 0238.2

ALCOVE FAMILY
NOURISH

OUTSIDE
CORRIDOR

FINISH FLOOR

MAT'L: 24GA GALV STEEL
FINISH: GRAY FINAL COTE

SAFETYEDGE CORB

4 HOUR W.H.
LABELED FIRE DOOR

"S" LABEL LEAKAGE RATED

6 1/2"

9 1/2"

5 1/2"

0"

8'-0" A.F.F.

8'-6" CLEAR OPEN HT

NOTES:

01. GENERAL SPECIFICATIONS SEE SHEET 1.
02. APPROX. WT. OF DOOR IS 1,039 LBS.
03. THE MANUFACTURER ASSUMES THAT THE FIRE DOOR(S), THE WALL AND/OR MOUNTING CONDITIONS, ALONG WITH THE FASTENERS USED IN ATTACHING THE DOOR(S) TO THE STRUCTURE MEET WITH THE "AUTHORITY HAVING JURISDICTION'S" APPROVAL. FOR FURTHER REFERENCE CONSULT N.F.P.A. BULLETIN 80.
04. SMOKE DETECTOR AND/OR ALARM SYSTEM TO PROVIDE DRY CONTACTS.
05. CONSULT WITH LOCAL CODES / INSPECTOR OF RECORD REGARDING CLEARANCE REQUIREMENTS FOR ELECTRICAL PANEL WIRING.
06. PROVIDE CORD REEL
07. PROVIDE 1 NEMA 1 FLUSH KEY ST(S) W/BEST CYL MMTC: HBFS
08. MOTOR BY LIFT MASTER.

DIMENSIONS AND CLEARANCES AS NOTED BY
ASTERISK (*) MUST BE FIELD CHECKED.

VERIFIED BY: _____ ON: _____

MAKE	HAND	ARCH. MARK	DOOR MARK
1	AS SHOWN		R-17
1	OPPOSITE	5.116.00.A LEVEL 5, AREA A ALCOVE NOURISH. A3.5A	L17

NO.	BY	DATE	REVISION
3			
2	SB	06/03/11	AS NOTED
1	SB	01/12/11	PER RTRND SBMTL / AS NOTED
	SB	06/29/10	ORIGINAL DRAWING



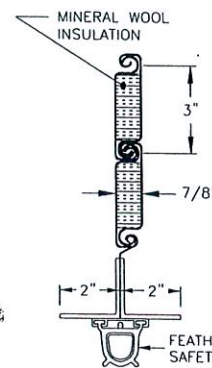
JOB: CHOC HOSPITAL - TOWER II
CONTRACTOR: MCCARTHY
ARCHITECT: FKP ARCHITECTS
DISTRIBUTOR: MCKENDRY DOOR SALES

DRAWING NO. 0811040203 13 OF 38

LEGEND
[A] RECOMMENDATION / DEVIATION FROM CONTRACT
DOCS / CLARIFICATION - SEE SUBMITTAL
NARRATIVE SHEET

* STRUCTURAL STEEL
CONSTRUCTION BY OTHERS

BOTTOM BAR LOCK		
TYPE	OPERATION	
	IN	OUT BOTH
NO LOCKING		



SLAT: #45-22/22GA
MAT'L: GALV STEEL
FINISH: GRAY FINAL COTE

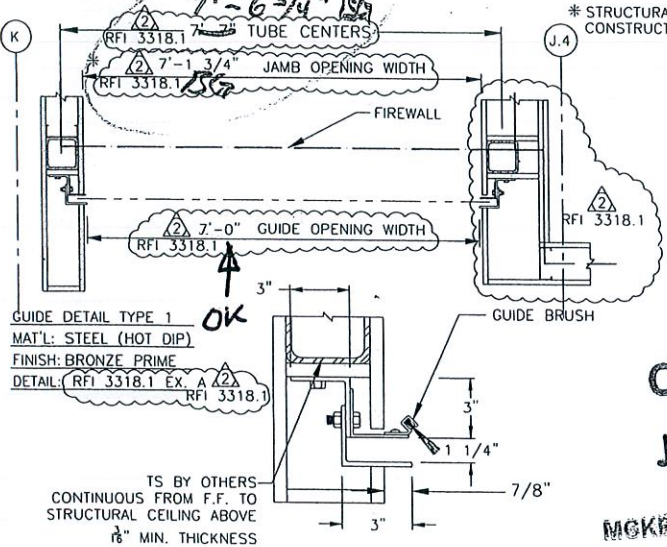
BOTTOM BAR DETAIL
MAT'L: STEEL (HOT DIP)
FINISH: BRONZE PRIME

FEATHEREDGE
SAFETY SWITCH

O.K. FAB

JUN 17 2011 mp

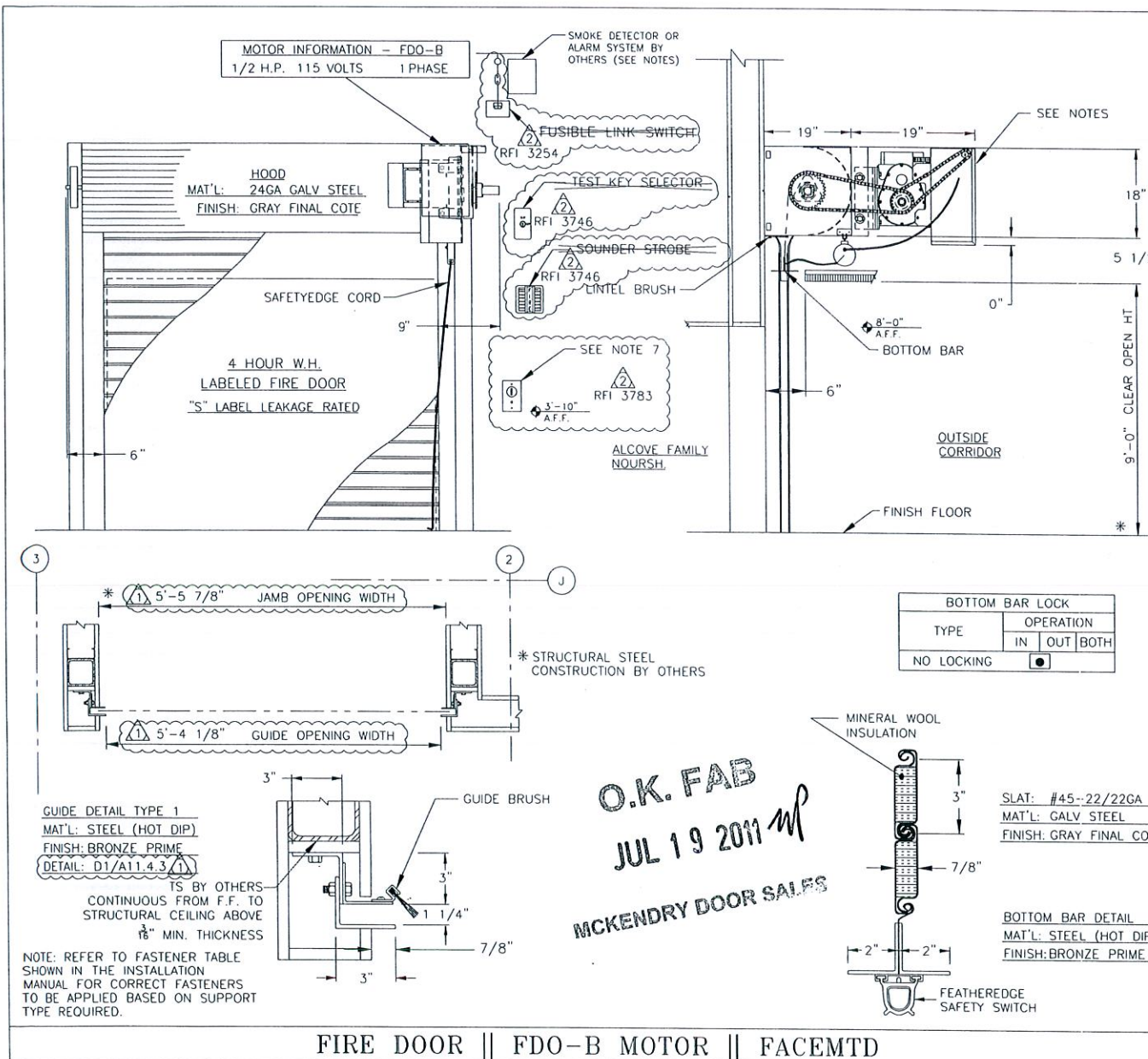
MCKENDRY DOOR SALES



GUIDE DETAIL TYPE 1
MAT'L: STEEL (HOT DIP)
FINISH: BRONZE PRIME
DETAIL: RFI 3318.1 EX. A

TS BY OTHERS
CONTINUOUS FROM F.F. TO
STRUCTURAL CEILING ABOVE
1/8" MIN. THICKNESS

DOOR || FDO-B MOTOR || FACEMTD



NOTES:

- GENERAL SPECIFICATIONS SEE SHEET 1.
- APPROX. WT. OF DOOR IS 862 LBS.
- THE MANUFACTURER ASSUMES THAT THE FIRE DOOR(S), THE WALL AND/OR MOUNTING CONDITIONS, ALONG WITH THE FASTENERS USED IN ATTACHING THE DOOR(S) TO THE STRUCTURE MEET WITH THE "AUTHORITY HAVING JURISDICTION'S" APPROVAL. FOR FURTHER REFERENCE CONSULT N.F.P.A. BULLETIN 80.
- SMOKE DETECTOR AND/OR ALARM SYSTEM TO PROVIDE DRY CONTACTS.
- CONSULT WITH LOCAL CODES / INSPECTOR OF RECORD REGARDING CLEARANCE REQUIREMENTS FOR ELECTRICAL PANEL WIRING.
- PROVIDE CORD REEL
- PROVIDE 1 NEMA 1 FLUSH KEY ST(S) W/BEST CYL MNTC: HBFS
- MOTOR BY LIFT MASTER.

FAB PER AGREEMENT
w/ McCarthy - See Email

DIMENSIONS AND CLEARANCES AS NOTED BY
ASTERISK (*) MUST BE FIELD CHECKED.

VERIFIED BY: _____ ON: _____

MAKE	HAND	ARCH. MARK	DOOR MARK
1	AS SHOWN	1.070.31.B LEVEL 1, AREA N ALCOVE NOURSH (A3.1N)	R23
	OPPOSITE		

NO.	BY	DATE	REVISION
3			
2	SB	06/03/11	AS NOTED
1	SB	01/12/11	PER RTRND SBMTTL / AS NOTED
	SB	07/02/10	ORIGINAL DRAWING



JOB: CHOC HOSPITAL - TOWER II

CONTRACTOR: MCCARTHY

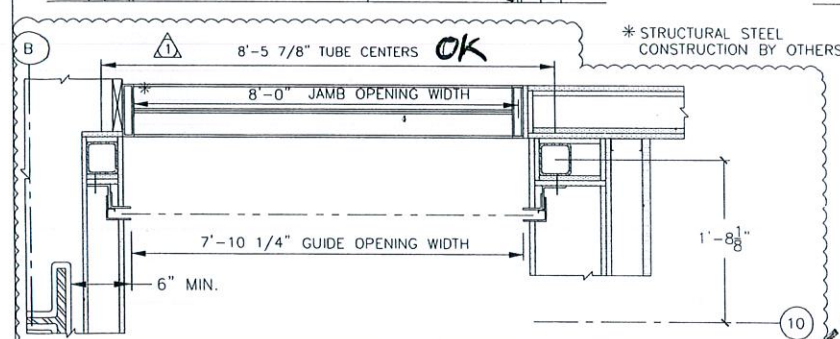
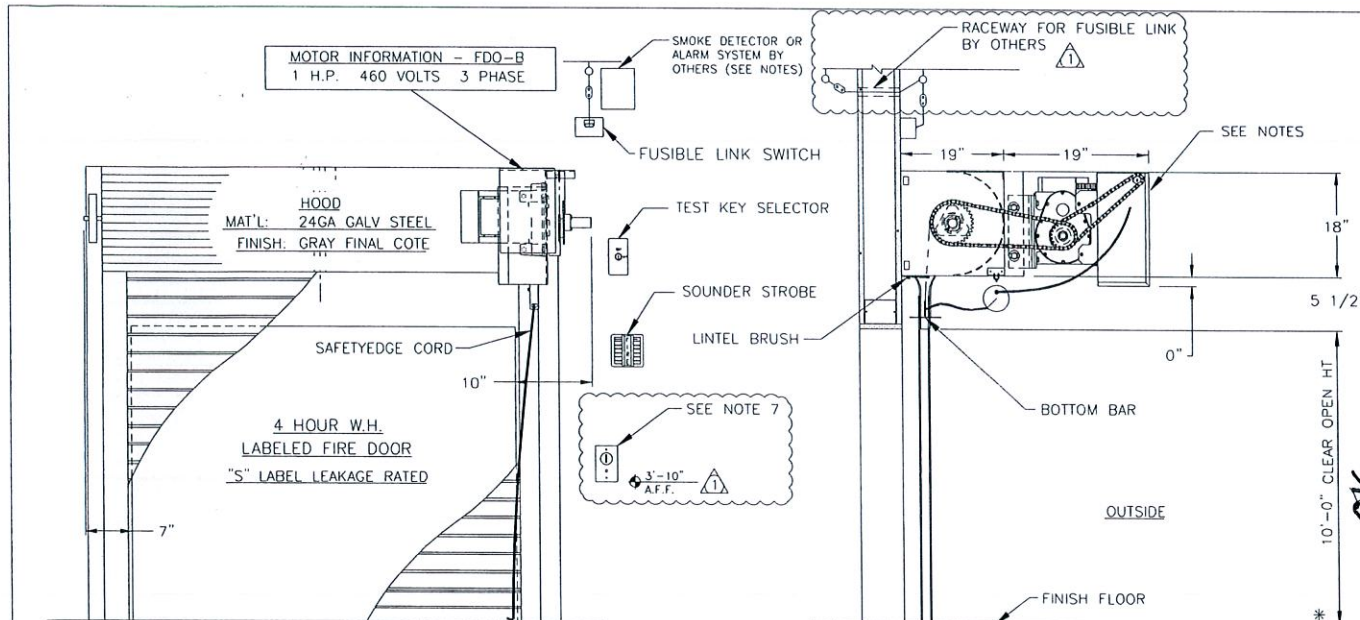
ARCHITECT: FKP ARCHITECTS

DISTRIBUTOR: MCKENDRY DOOR SALES

DRAWING NO. 0811040203

15 OF 38

LEGEND
A RECOMMENDATION / DEVIATION FROM CONTRACT
DOCS / CLARIFICATION - SEE SUBMITTAL
NARRATIVE SHEET

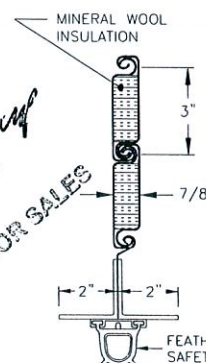
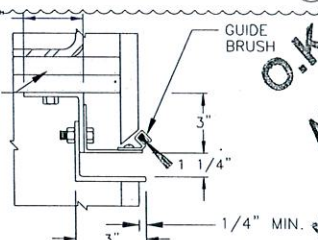


BOTTOM BAR LOCK		
TYPE	OPERATION	
	IN	OUT BOTH
NO LOCKING	<input checked="" type="checkbox"/>	<input type="checkbox"/>

GUIDE DETAIL TYPE 1
 MAT'L: STEEL (HOT DIP)
 FINISH: BRONZE PRIME
 DETAIL: C3/A11.4.3

TS BY OTHERS
 CONTINUOUS FROM F.F. TO
 STRUCTURAL CEILING ABOVE
 3/16" MIN. THICKNESS

NOTE: REFER TO FASTENER TABLE
 SHOWN IN THE INSTALLATION
 MANUAL FOR CORRECT FASTENERS
 TO BE APPLIED BASED ON SUPPORT
 TYPE REQUIRED.



SLAT: #45-22/22GA
 MAT'L: GALV STEEL
 FINISH: GRAY FINAL COTE
 FIRELOCKS: YES

BOTTOM BAR DETAIL
 MAT'L: STEEL (HOT DIP)
 FINISH: BRONZE PRIME

NOTES:

- GENERAL SPECIFICATIONS SEE SHEET 1
- APPROX. WT. OF DOOR IS 1691 LBS.
- THE MANUFACTURER ASSUMES THAT THE FIRE DOOR(S), THE WALL AND/OR MOUNTING CONDITIONS, ALONG WITH THE FASTENERS USED IN ATTACHING THE DOOR(S) TO THE STRUCTURE MEET WITH THE "AUTHORITY HAVING JURISDICTION'S" APPROVAL. FOR FURTHER REFERENCE CONSULT N.F.P.A. BULLETIN 80.
- SMOKE DETECTOR AND/OR ALARM SYSTEM TO PROVIDE DRY CONTACTS.
- CONSULT WITH LOCAL CODES / INSPECTOR OF RECORD REGARDING CLEARANCE REQUIREMENTS FOR ELECTRICAL PANEL WIRING.
- PROVIDE CORD REEL
- PROVIDE 1 NEMA 1 FLUSH KEY ST(S) W/BEST CYL MMT: HBFS
- MOTOR BY LIFT MASTER.

DIMENSIONS AND CLEARANCES AS NOTED BY
 ASTERISK (*) MUST BE FIELD CHECKED.

VERIFIED BY: BP/BG ON: 4/11/11

MAKE	HAND	ARCH. MARK	DOOR MARK
1	AS SHOWN	1.016.00CBA LEVEL 1, AREA D A2.1B	R24
	OPPOSITE		

3			
2			
1	SB	01/12/11	PER RTRND SBMITL / AS NOTED
	SB	07/02/10	ORIGINAL DRAWING
NO.	BY	DATE	REVISION



JOB: CHOC HOSPITAL - TOWER II
 CONTRACTOR: MCCARTHY
 ARCHITECT: FKP ARCHITECTS
 DISTRIBUTOR: MCKENDRY DOOR SALES

DRAWING NO. 0811040203

16 OF 38

LEGEND

- A** RECOMMENDATION / DEVIATION FROM CONTRACT
 DOCS / CLARIFICATION - SEE SUBMITTAL
 NARRATIVE SHEET

FIRE DOOR || FDO-B MOTOR || FACEMTD

O.K. FAB
 APR 27 2011
 MCKENDRY DOOR SALES

- A** RECOMMENDATION / DEVIATION FROM CONTRACT
DOCS / CLARIFICATION - SEE SUBMITTAL
NARRATIVE SHEET

O.K. FAB

DEC 07 2011 *mt*

Pipe @ 11'2"
Emt @ 10'9" must move

MOTOR INFORMATION - FDO-A10
1/8 H.P. 115 VOLTS 1 PHASE

MCKENDRY DOOR SALES

FUSIBLE LINK
SWITCH AND RACEWAY
OPTION

YES ☐ NO ☒

RFI 3254

FLAME Baffle

3 ALIGN
ASI 81

7.2 1/4"

LINTEL BRUSH

2 5/8"

3 1/2"

3 1/2"

3 1/2"

3 1/2"

3 1/2"

3 1/2"

3 1/2"

3 1/2"

3 1/2"

3 1/2"

3 1/2"

3 1/2"

3 1/2"

3 1/2"

3 1/2"

3 1/2"

3 1/2"

3 1/2"

3 1/2"

3 1/2"

3 1/2"

3 1/2"

3 1/2"

3 1/2"

3 1/2"

3 1/2"

3 1/2"

3 1/2"

3 1/2"

3 1/2"

SEE NOTE 6
3'-10" AFF. RFI 3783

* STEEL STUDS/DRYWALL
CONSTRUCTION
16GA MIN. (3)
AREA OF COUNTERTOP

BOTTOM BAR LOCK		
TYPE	OPERATION	
	IN	OUT BOTH
NO LOCKING	<input checked="" type="checkbox"/>	<input type="checkbox"/>

GUIDE DETAIL
MAT'L: STAINLESS STEEL
FINISH: #4 POLISH
DETAIL: B2C/A11.4.1 SIM.

SLAT DETAIL: #10-22GA
MAT'L: STAINLESS STEEL
FINISH: #4 POLISH

BOTTOM BAR DETAIL
MAT'L: STAINLESS STEEL
FINISH: #4 POLISH

NOTES:

01. GENERAL SPECIFICATIONS SEE SHEET 1.
02. APPROX. WT. OF DOOR IS 460 LBS.
03. THE MANUFACTURER ASSUMES THAT THE FIRE DOOR(S), THE WALL AND/OR MOUNTING CONDITIONS, ALONG WITH THE FASTENERS USED IN ATTACHING THE DOOR(S) TO THE STRUCTURE MEET WITH THE "AUTHORITY HAVING JURISDICTION'S" APPROVAL. FOR FURTHER REFERENCE CONSULT N.F.P.A. BULLETIN 80.
04. CONSULT WITH LOCAL CODES / INSPECTOR OF RECORD REGARDING CLEARANCE REQUIREMENTS FOR ELECTRICAL PANEL WIRING.
05. PROVIDE CORD REEL
06. PROVIDE 1 NEMA 1 FLUSH KEY ST(S) W/BEST CYL MMT: HBFS
07. SEE SHEET 22 FOR COUNTER TOP DETAILS.

TL HT = 7'-10"

4 RFI 4880-0

DIMENSIONS AND CLEARANCES AS NOTED BY ASTERISK (*) MUST BE FIELD CHECKED.

VERIFIED BY: _____ ON: _____

MAKE	HAND	ARCH. MARK	DOOR MARK
1	AS SHOWN	B.007.19F LL. AREA A3.0J (1)	R2B
	OPPOSITE		

NO.	BY	DATE	REVISION
3	SB	06/03/11	AS NOTED
2	SB	03/29/11	PER RTRND SBMTL / AS NOTED
1	SB	01/12/11	PER RTRND SBMTL / AS NOTED
	SB	06/30/10	ORIGINAL DRAWING



JOB: CHOC HOSPITAL - TOWER II
CONTRACTOR: MCCARTHY
ARCHITECT: FKP ARCHITECTS
DISTRIBUTOR: MCKENDRY DOOR SALES

DRAWING NO. 0811040203 21 OF 38

LEGEND
[A] RECOMMENDATION / DEVIATION FROM CONTRACT
DOCS / CLARIFICATION - SEE SUBMITTAL
NARRATIVE SHEET

SMOKE CONTROL DOOR || FDO-A10 MOTOR || VERT MNT || FACEMTD

Revised

O.K. FAB

DEC 14 2011 *mf*

MOTOR INFORMATION - FDO-A10
1/8 H.P. 115 VOLTS 1 PHASE

MCKENDRY DOOR SALES
RACEWAY

FUSIBLE LINK
SWITCH AND RACEWAY
OPTION
YES ☐ NO ☒
RFT 3254

HOOD
MAT'L: STAINLESS STEEL
FINISH: #4 POLISH

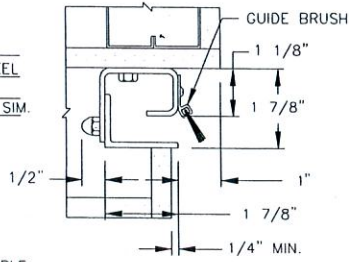
SAFETYEDGE CORD
1 1/2 HOUR W.H.
LABELED FIRE DOOR
"S" LABEL LEAKAGE RATED

SEE NOTE 6
3'-10" AFF.
RFT 3783

* STEEL STUDS/DRYWALL
CONSTRUCTION
AREA OF COUNTERTOP

BOTTOM BAR LOCK
OPERATION
TYPE IN OUT BOTH
NO LOCKING ☒

GUIDE DETAIL
MAT'L: STAINLESS STEEL
FINISH: #4 POLISH
DETAIL: B2C/A11.4.1 SIM.



NOTE: REFER TO FASTENER TABLE
SHOWN IN THE INSTALLATION
MANUAL FOR CORRECT FASTENERS
TO BE APPLIED BASED ON SUPPORT
TYPE REQUIRED.

FLAME Baffle
ALIGN
ASI 81
7'-1 3/4"

LINTEL BRUSH
2 5/8"

DETAIL: B2/A11.4.1 SIM.

5'-8 1/4"
+ 1'-3"
6'-11 1/4" TL HT DR.

SLAT DETAIL: #10-22GA
MAT'L: STAINLESS STEEL
FINISH: #4 POLISH

BOTTOM BAR DETAIL
MAT'L: STAINLESS STEEL
FINISH: #4 POLISH

SENSING EDGE

NOTES:

01. GENERAL SPECIFICATIONS SEE SHEET 1.
02. APPROX. WT. OF DOOR IS 300 LBS.
03. THE MANUFACTURER ASSUMES THAT THE FIRE DOOR(S), THE WALL AND/OR MOUNTING CONDITIONS, ALONG WITH THE FASTENERS USED IN ATTACHING THE DOOR(S) TO THE STRUCTURE MEET WITH THE "AUTHORITY HAVING JURISDICTION'S" APPROVAL. FOR FURTHER REFERENCE CONSULT N.F.P.A. BULLETIN 80.
04. CONSULT WITH LOCAL CODES / INSPECTOR OF RECORD REGARDING CLEARANCE REQUIREMENTS FOR ELECTRICAL PANEL WIRING.
05. PROVIDE CORD REEL
06. PROVIDE 1 NEMA 1 FLUSH KEY ST(S) W/BEST CYL MMTC: HBFS
07. SEE SHEET 26 FOR COUNTER TOP DETAILS.

Hard lid ceiling
(4" Stud) 5/8" Drywall
1/8" Tape mud

DIMENSIONS AND CLEARANCES AS NOTED BY
ASTERISK (*) MUST BE FIELD CHECKED.

VERIFIED BY: *Ben* ON: _____

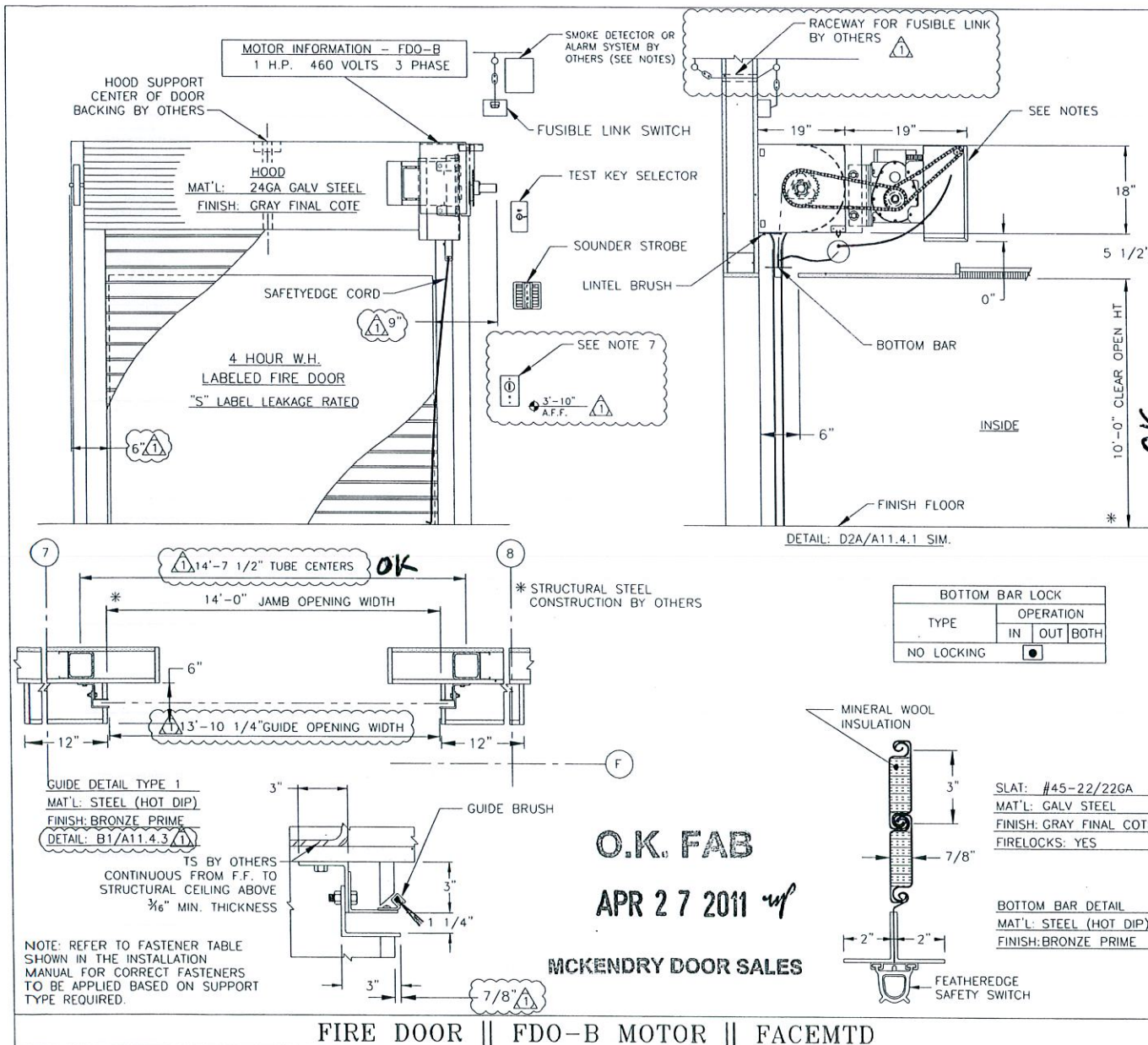
MAKE	HAND	ARCH. MARK	DOOR MARK
1	AS SHOWN	3.001.46C LVL 3 - AREA H A3.3H (1)	R30
	OPPOSITE		
3	SB	06/03/11	AS NOTED
2	SB	03/29/11	PER RTRND SBMTTL / AS NOTED
1	SB	01/12/11	PER RTRND SBMTTL / AS NOTED
	SB	06/30/10	ORIGINAL DRAWING
NO.	BY	DATE	REVISION



JOB: CHOC HOSPITAL - TOWER II
CONTRACTOR: MCCARTHY
ARCHITECT: FKP ARCHITECTS
DISTRIBUTOR: MCKENDRY DOOR SALES
DRAWING NO. 0811040203 25 OF 38

LEGEND
[A] RECOMMENDATION / DEVIATION FROM CONTRACT
DOCS / CLARIFICATION - SEE SUBMITTAL
NARRATIVE SHEET

SMOKE CONTROL DOOR || FDO-A10 MOTOR || VERT MNT || FACEMTD



NOTES:

- GENERAL SPECIFICATIONS SEE SHEET 1.
- APPROX. WT. OF DOOR IS 1,981 LBS.
- THE MANUFACTURER ASSUMES THAT THE FIRE DOOR(S), THE WALL AND/OR MOUNTING CONDITIONS, ALONG WITH THE FASTENERS USED IN ATTACHING THE DOOR(S) TO THE STRUCTURE MEET WITH THE "AUTHORITY HAVING JURISDICTION'S" APPROVAL. FOR FURTHER REFERENCE CONSULT N.F.P.A. BULLETIN 80.
- SMOKE DETECTOR AND/OR ALARM SYSTEM TO PROVIDE DRY CONTACTS.
- CONSULT WITH LOCAL CODES / INSPECTOR OF RECORD REGARDING CLEARANCE REQUIREMENTS FOR ELECTRICAL PANEL WIRING.
- PROVIDE CORD REEL
- PROVIDE 1 NEMA 1 FLUSH KEY ST(S) W/BEST CYL MMTC: HBFS
- MOTOR BY LIFT MASTER.

DIMENSIONS AND CLEARANCES AS NOTED BY
ASTERISK (*) MUST BE FIELD CHECKED.

VERIFIED BY: **BP/BC** ON: **4/11/11**

MAKE	HAND	ARCH. MARK	DOOR MARK
1	AS SHOWN	1.007D LEVEL 1 AREA H A3.1H	R42
	OPPOSITE		

3			
2			
1	SB	01/12/11	PER RTRND SBMTL / AS NOTED
	SB	07/05/10	ORIGINAL DRAWING
NO.	BY	DATE	REVISION



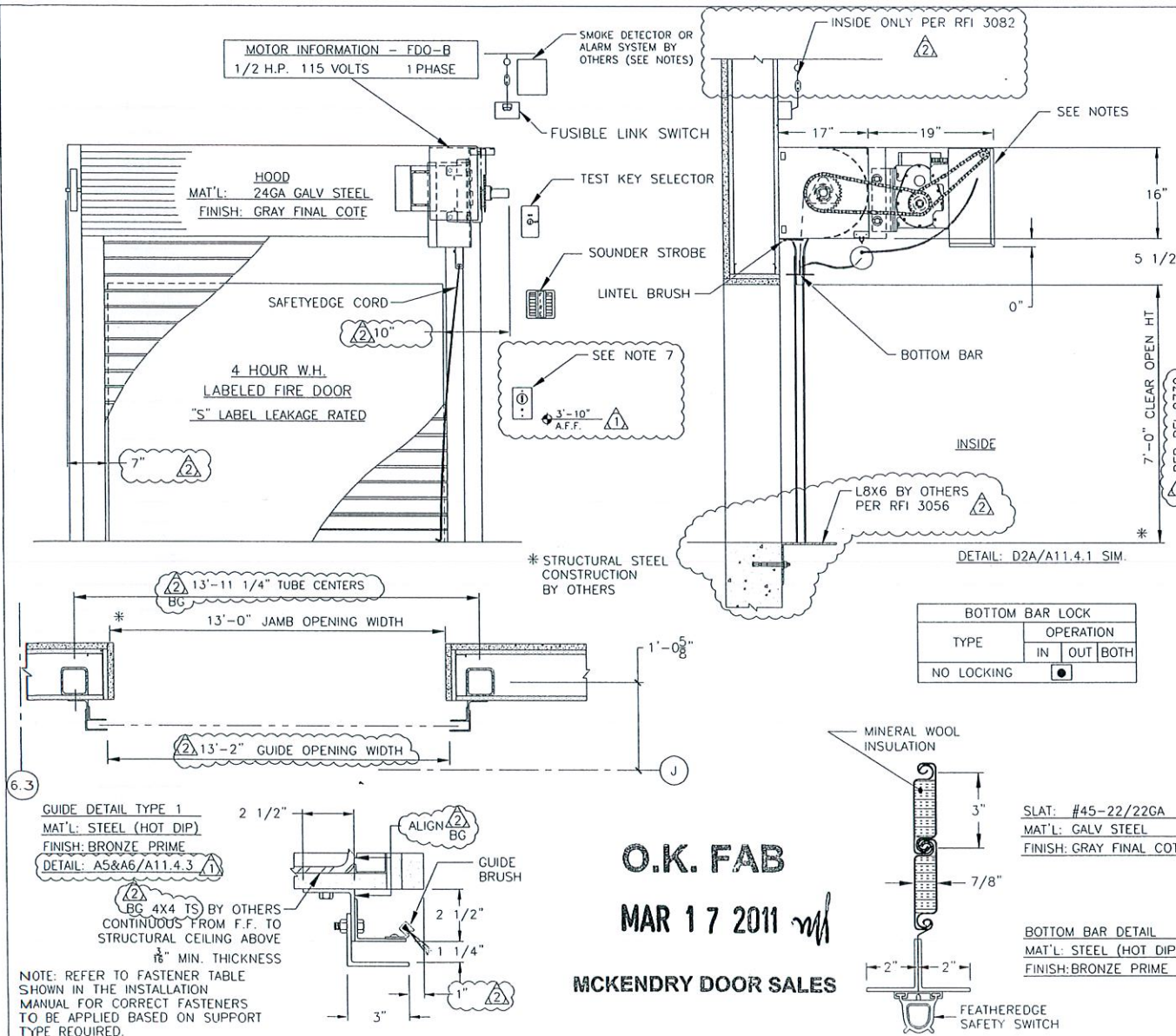
JOB: CHOC HOSPITAL - TOWER II
CONTRACTOR: MCCARTHY
ARCHITECT: FKP ARCHITECTS
DISTRIBUTOR: MCKENDRY DOOR SALES

DRAWING NO. 0811040203

33 OF 38

LEGEND

- A** RECOMMENDATION / DEVIATION FROM CONTRACT
DOCS / CLARIFICATION - SEE SUBMITTAL
NARRATIVE SHEET



NOTES:

- GENERAL SPECIFICATIONS SEE SHEET 1.
- APPROX. WT. OF DOOR IS 1,386 LBS.
- THE MANUFACTURER ASSUMES THAT THE FIRE DOOR(S), THE WALL AND/OR MOUNTING CONDITIONS, ALONG WITH THE FASTENERS USED IN ATTACHING THE DOOR(S) TO THE STRUCTURE MEET WITH THE "AUTHORITY HAVING JURISDICTION'S" APPROVAL. FOR FURTHER REFERENCE CONSULT N.F.P.A. BULLETIN 80.
- SMOKE DETECTOR AND/OR ALARM SYSTEM TO PROVIDE DRY CONTACTS.
- CONSULT WITH LOCAL CODES / INSPECTOR OF RECORD REGARDING CLEARANCE REQUIREMENTS FOR ELECTRICAL PANEL WIRING.
- PROVIDE CORD REEL
- PROVIDE 1 NEMA 1 FLUSH KEY ST(S) W/BEST CYL MMTC: HBFS
- MOTOR BY LIFT MASTER.

DIMENSIONS AND CLEARANCES AS NOTED BY ASTERISK (*) MUST BE FIELD CHECKED.

VERIFIED BY: _____ ON: _____

MAKE	HAND	ARCH. MARK	DOOR MARK
1	AS SHOWN	R.130A LEVEL 8, PENT 1 A2.8.1	RS1
	OPPOSITE		
3			
2	SB	03/16/11	PER FIELD VISIT / AS NOTED
1	SB	01/12/11	PER RTRND SBMTL / AS NOTED
	SB	07/02/10	ORIGINAL DRAWING
NO.	BY	DATE	REVISION



JOB: CHOC HOSPITAL - TOWER II

CONTRACTOR: MCCARTHY

ARCHITECT: FKP ARCHITECTS

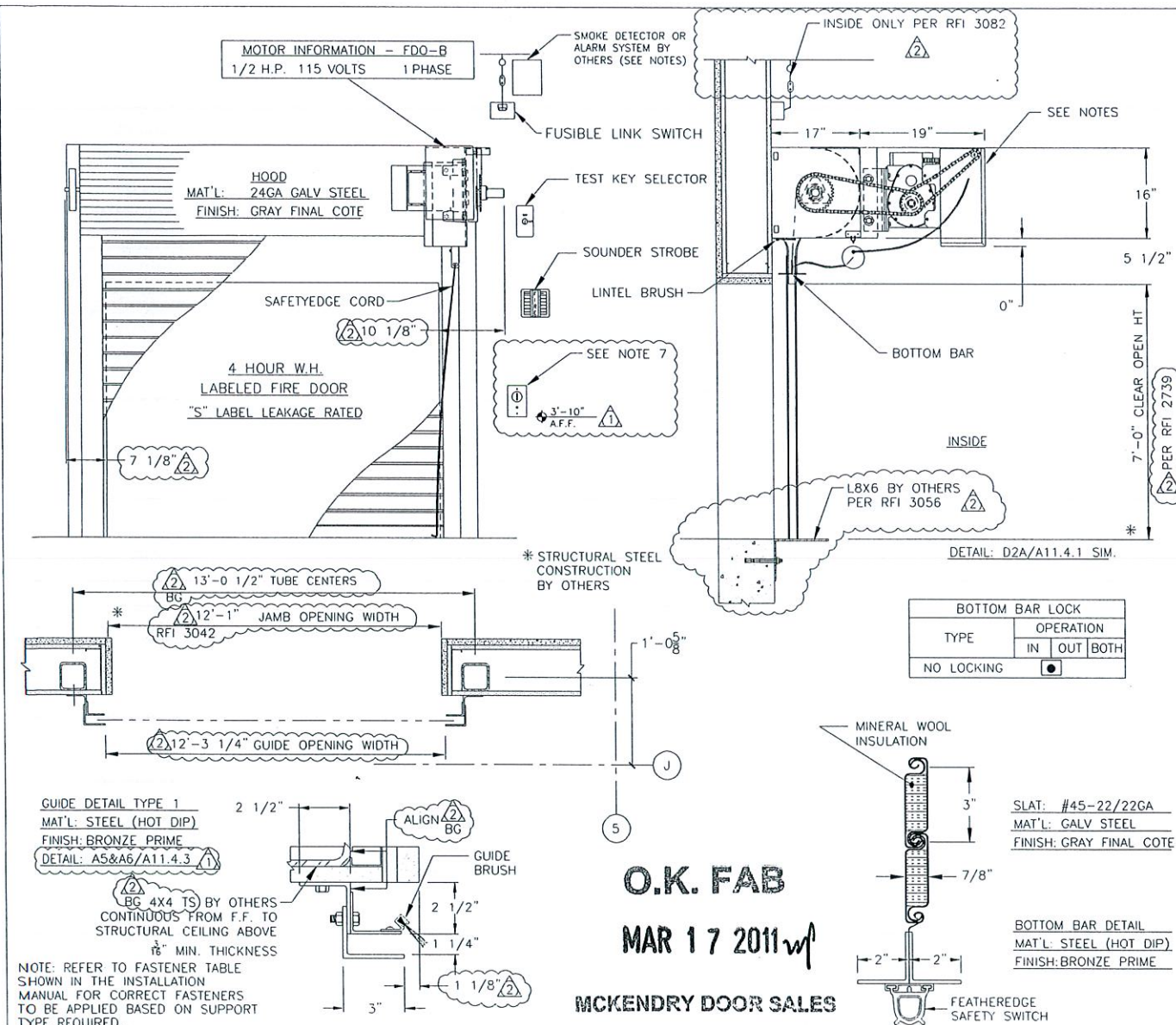
DISTRIBUTOR: MCKENDRY DOOR SALES

DRAWING NO. 0811040203

14A OF 38

LEGEND
A RECOMMENDATION / DEVIATION FROM CONTRACT DOCS / CLARIFICATION - SEE SUBMITTAL NARRATIVE SHEET

FIRE DOOR || FDO-B MOTOR || FACEMTD

**NOTES:**

- GENERAL SPECIFICATIONS SEE SHEET 1.
- APPROX. WT. OF DOOR IS 1,386 LBS.
- THE MANUFACTURER ASSUMES THAT THE FIRE DOOR(S), THE WALL AND/OR MOUNTING CONDITIONS, ALONG WITH THE FASTENERS USED IN ATTACHING THE DOOR(S) TO THE STRUCTURE MEET WITH THE "AUTHORITY HAVING JURISDICTION'S" APPROVAL. FOR FURTHER REFERENCE CONSULT N.F.P.A. BULLETIN 80.
- SMOKE DETECTOR AND/OR ALARM SYSTEM TO PROVIDE DRY CONTACTS.
- CONSULT WITH LOCAL CODES / INSPECTOR OF RECORD REGARDING CLEARANCE REQUIREMENTS FOR ELECTRICAL PANEL WIRING.
- PROVIDE CORD REEL
- PROVIDE 1 NEMA 1 FLUSH KEY ST(S) W/BEST CYL MMTC: HBFS
- MOTOR BY LIFT MASTER.

DIMENSIONS AND CLEARANCES AS NOTED BY ASTERISK (*) MUST BE FIELD CHECKED.

VERIFIED BY: _____ ON: _____

MAKE	HAND	ARCH. MARK	DOOR MARK
	AS SHOWN		
1	OPPOSITE	R.130E LEVEL 8, PENT 1 A2.8.1	L52
3			
2	SB	03/16/11	PER FIELD VISIT / AS NOTED
1	SB	01/12/11	PER RTRND SBMTL / AS NOTED
	SB	07/02/10	ORIGINAL DRAWING
NO.	BY	DATE	REVISION



JOB: CHOC HOSPITAL - TOWER II
CONTRACTOR: MCCARTHY
ARCHITECT: FKP ARCHITECTS
DISTRIBUTOR: MCKENDRY DOOR SALES

DRAWING NO. 0811040203

14B OF 38

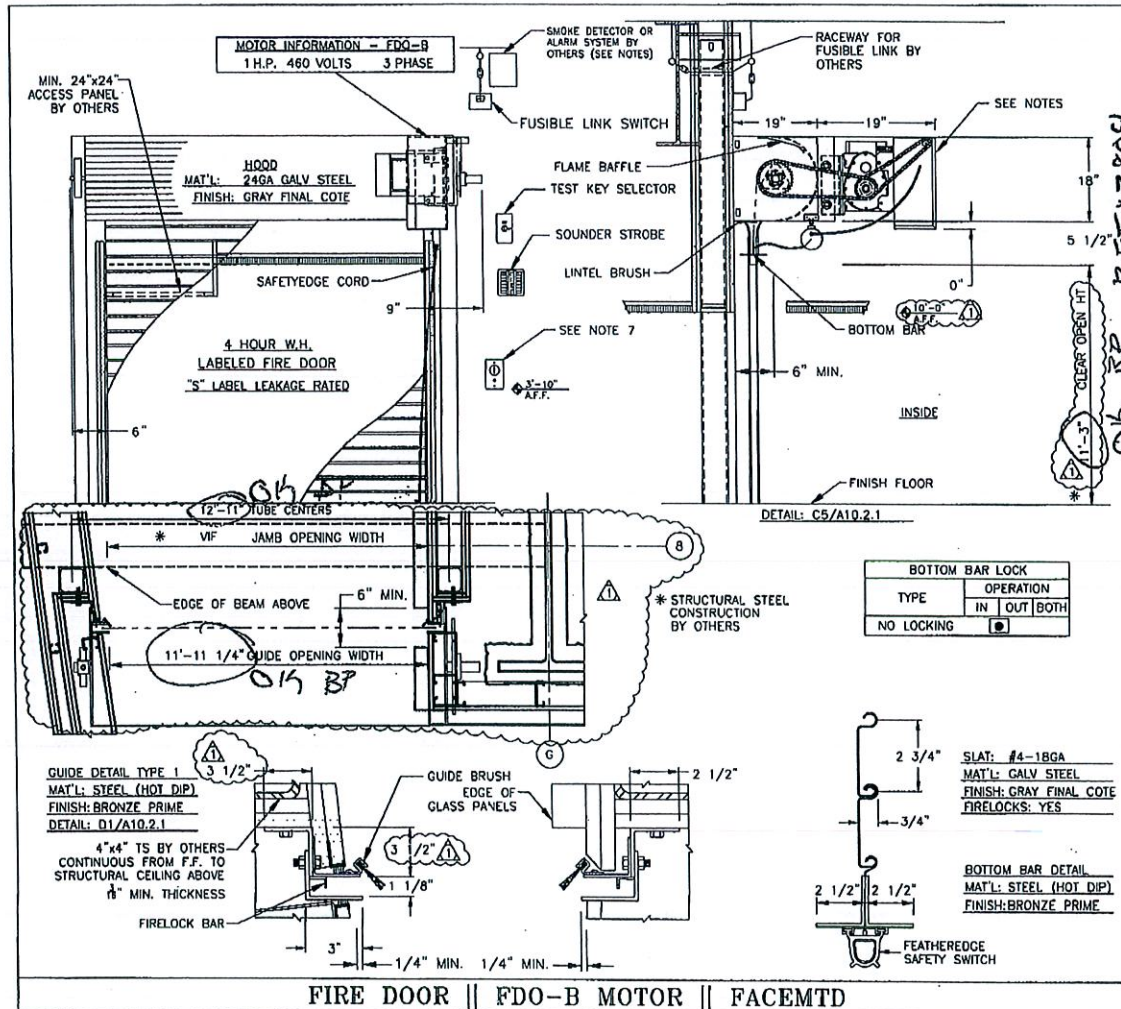
LEGEND
A RECOMMENDATION / DEVIATION FROM CONTRACT DOCS / CLARIFICATION - SEE SUBMITTAL NARRATIVE SHEET

FIRE DOOR || FDO-B MOTOR || FACEMTD

O.K. FAB

JUN 08 2011

MCKENDRY DOOR SALES



NOTES:

01. GENERAL SPECIFICATIONS SEE SHEET 1.
02. APPROX. WT. OF DOOR IS 1,844 LBS.
03. THE MANUFACTURER ASSUMES THAT THE FIRE DOOR(S), THE WALL AND/OR MOUNTING CONDITIONS, ALONG WITH THE FASTENERS USED IN ATTACHING THE DOOR(S) TO THE STRUCTURE MEET WITH THE "AUTHORITY HAVING JURISDICTION'S" APPROVAL. FOR FURTHER REFERENCE CONSULT N.F.P.A. BULLETIN 80.
04. SMOKE DETECTOR AND/OR ALARM SYSTEM TO PROVIDE DRY CONTACTS.
05. CONSULT WITH LOCAL CODES / INSPECTOR OF RECORD REGARDING CLEARANCE REQUIREMENTS FOR ELECTRICAL PANEL WIRING.
06. PROVIDE CORD REEL
07. PROVIDE 1 NEMA 1 FLUSH KEY ST(S) W/BEST CYL MMT: HBFS
08. MOTOR BY LIFT MASTER.

DIMENSIONS AND CLEARANCES AS NOTED BY ASTERISK (*) MUST BE FIELD CHECKED.

VERIFIED BY: *BP* ON: *4/11*

MAKE	HAND	ARCH. MARK	DOOR MARK
1	AS SHOWN	2.004.00.CC LVL 2, AREA E A3.2E	R53
OPPOSITE			

NO.	BY	DATE	REVISION
1	SB	03/29/11	PER RTRND SBMITL / AS NOTED
2	SB	01/13/11	ORIGINAL DRAWING



OOKSON ROLLING DOORS

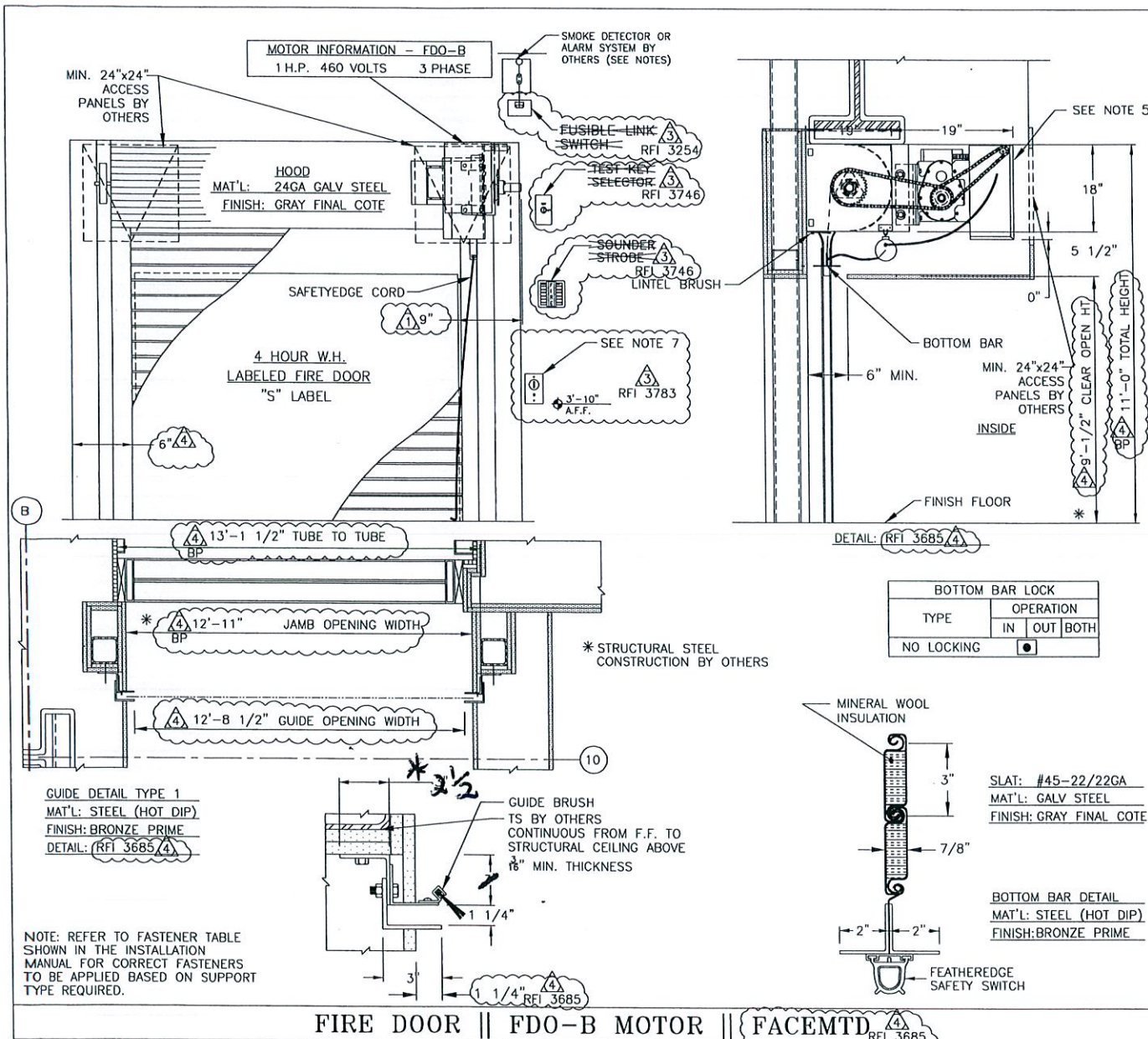
JOB: CHOC HOSPITAL - TOWER II
CONTRACTOR: MCCARTHY
ARCHITECT: FKP ARCHITECTS
DISTRIBUTOR: MCKENDRY DOOR SALES
DRAWING NO. 0811040203

35 OF 38

LEGEND

- A** RECOMMENDATION / DEVIATION FROM CONTRACT DOCS / CLARIFICATION - SEE SUBMITTAL NARRATIVE SHEET

13X08 FILE FOLDERS\08100109149 - 081230065\0810040203 CHOC Hospital Tower II\Engineering\0810040203 - Revision per Comments\081230065\0810040203.dwg, Model, 4/7/2011 9:29:53 AM



SB 08/17/11 PER FIELD VISIT / RFI 3685

NOTES:

01. GENERAL SPECIFICATIONS SEE SHEET 1.
02. APPROX. WT. OF DOOR IS 1,867 LBS.
03. THE MANUFACTURER ASSUMES THAT THE FIRE DOOR(S), THE WALL AND/OR MOUNTING CONDITIONS, ALONG WITH THE FASTENERS USED IN ATTACHING THE DOOR(S) TO THE STRUCTURE MEET WITH THE "AUTHORITY HAVING JURISDICTION'S" APPROVAL. FOR FURTHER REFERENCE CONSULT N.F.P.A. BULLETIN 80.
04. SMOKE DETECTOR AND/OR ALARM SYSTEM TO PROVIDE DRY CONTACTS.
05. CONSULT WITH LOCAL CODES / INSPECTOR OF RECORD REGARDING CLEARANCE REQUIREMENTS FOR ELECTRICAL PANEL WIRING.
06. PROVIDE CORD REEL
07. PROVIDE 1 NEMA 1 FLUSH KEY ST(S) W/BEST CYL MMTC: HBFS
08. MOTOR BY LIFT MASTER.

O.K. FAB

AUG 22 2011

MCKENDRY DOOR SALES

DIMENSIONS AND CLEARANCES AS NOTED BY ASTERISK (*) MUST BE FIELD CHECKED

VERIFIED BY: *JP* ON: *8/19*

MAKE	HAND	ARCH. MARK	DOOR MARK
1	AS SHOWN	2.160A LEVEL 2, AREA B A3.2D/1	R60
	OPPOSITE		

NO.	BY	DATE	REVISION
3	SB	06/03/11	AS NOTED
2	SB	03/29/11	PER RTRND SBMTL / AS NOTED
1	SB	01/12/11	PER RTRND SBMTL / AS NOTED
	SB	06/29/10	ORIGINAL DRAWING



JOB: CHOC HOSPITAL - TOWER II

CONTRACTOR: MCCARTHY

ARCHITECT: FKP ARCHITECTS

DISTRIBUTOR: MCKENDRY DOOR SALES

DRAWING NO. 0811040203

3 OF 38

LEGEND

- A** RECOMMENDATION / DEVIATION FROM CONTRACT DOCS / CLARIFICATION - SEE SUBMITTAL NARRATIVE SHEET

* HENZ WILL
PUSH BOLT OUT
2 1/2" IS STANDARD!

THIS USED TO BE R2