

FKP Architects

ARCHITECT OF RECORD

CONSULTANT

T M A D
TAYLOR
& G AINES

- STRUCTURAL
- MECHANICAL
- ELECTRICAL
- CIVIL

100 South Anaheim Boulevard, Suite 150
Anaheim, California 92805
Phone: 714.490.5555 Fax: 714.490.5560
Project No. 2305-163-07

REVISIONS

89A 12/05/11 CHANGE ORDER #303

APPROVAL

PROJECT NAME

**CHILDREN'S HOSPITAL
OF ORANGE COUNTY**
455 S. Main St.
Orange, CA 92868-3874

TOWER II



PROJECT NUMBER

**12011.00
Increment #7**

OSHPD - PROJECT NUMBER
IL 072072-30

ISSUE

OSHPD PERMIT

DATE

01/27/2010

SCALE

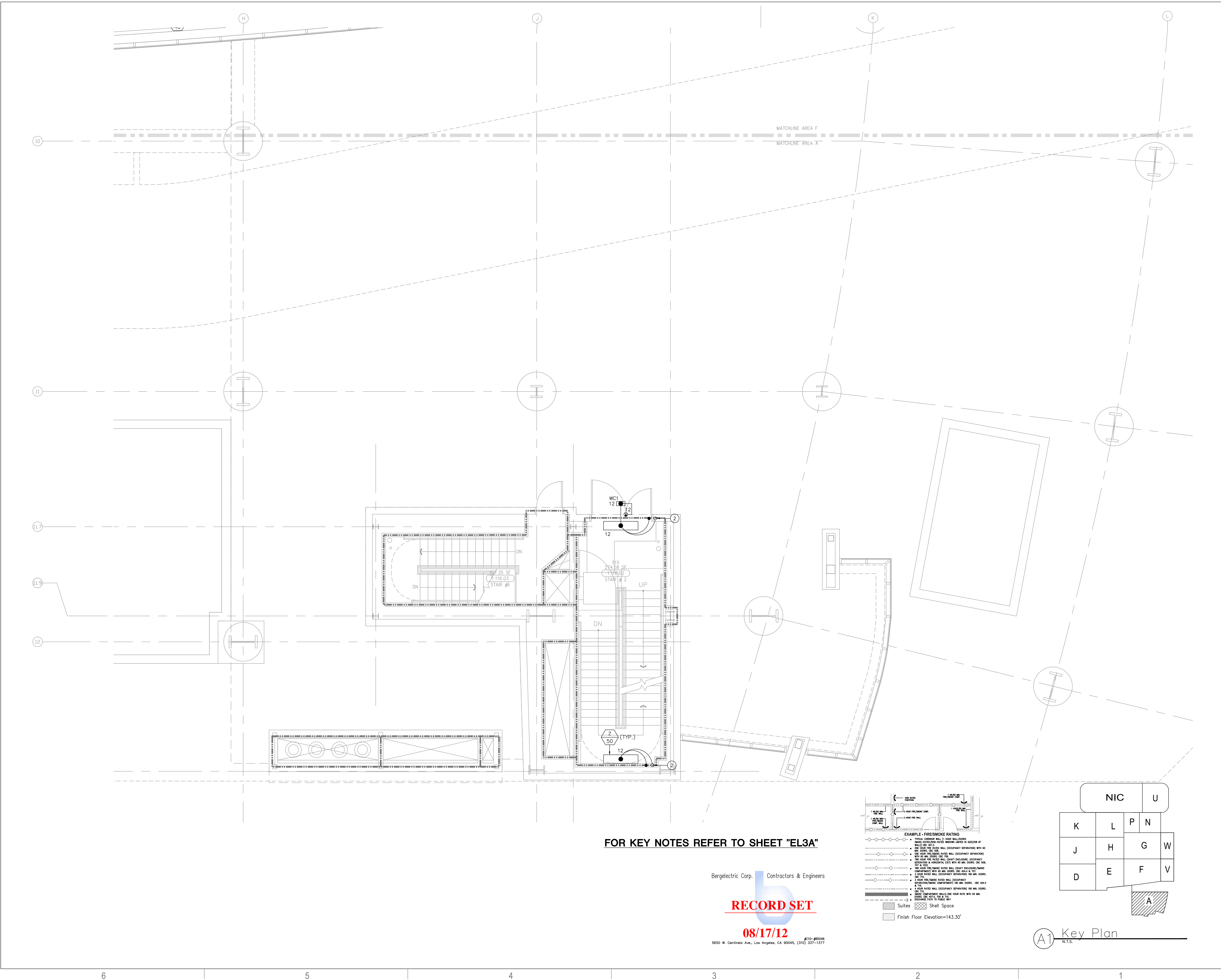
1/4"=1' 0"

DRAWING TITLE

**LEVEL 1 LIGHTING PLAN
AREA - A**

DRAWING NUMBER

EL3.1A



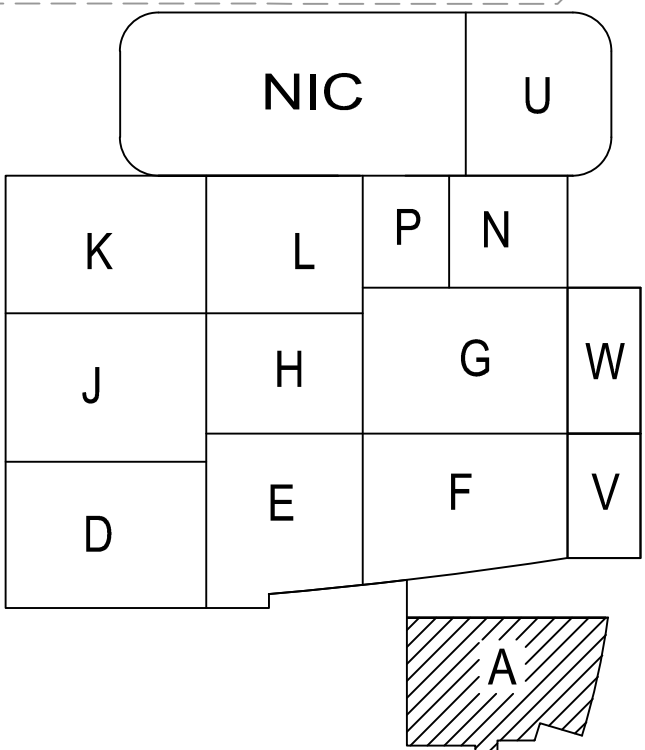
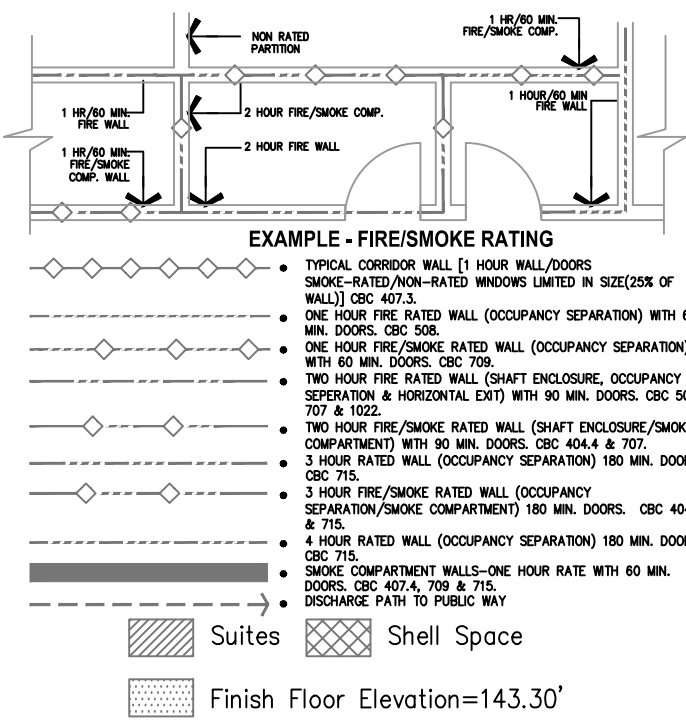
FOR KEY NOTES REFER TO SHEET "EL3A"

Bergelectric Corp. Contractors & Engineers

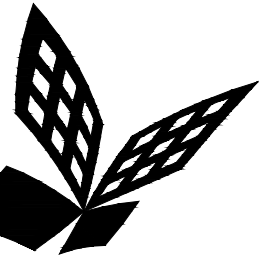
RECORD SET

08/17/12

#C10-JB5046
5650 W. Centinela Ave., Los Angeles, CA 90045, (310) 337-1377



A1 Key Plan
N.T.S.



FKP Architects

ARCHITECT OF RECORD

CONSULTANT

T M A D
TAYLOR
& G AINES
100 South Anaheim Boulevard, Suite 150
Anaheim, California 92805
Phone: 714.490.5555 Fax: 714.490.5560
Project No. 2305-163-07

REVISIONS
11/22/10 CHANGE ORDER #29
12/05/11 CHANGE ORDER #303

APPROVAL

PROJECT NAME
CHILDREN'S HOSPITAL
OF ORANGE COUNTY
455 S. Main St.
Orange, CA 92868-3874

TOWER II



PROJECT NUMBER

12011.00
Increment #7

OSHPD - PROJECT NUMBER
IL 072072-30

ISSUE

OSHPD PERMIT

DATE

01/27/2010

SCALE

1/4" = 1'-0"

DRAWING TITLE

LEVEL 1 LIGHTING PLAN
AREA - D

DRAWING NUMBER

EL3.1D

FOR KEY NOTES REFER TO SHEET "EL3A"

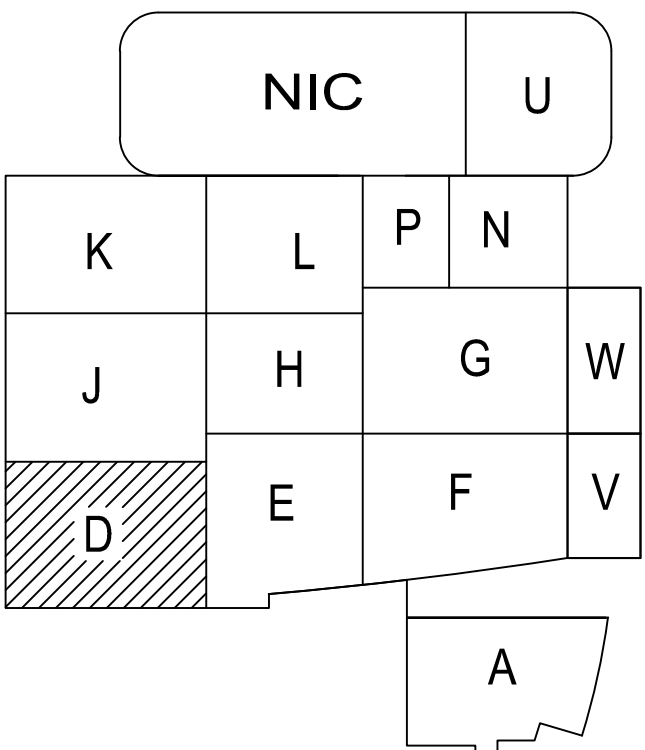
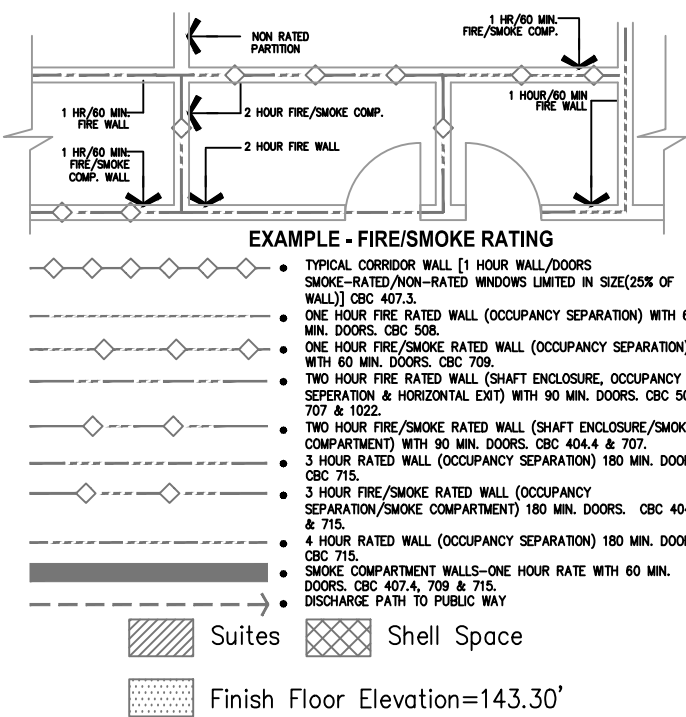
Bergelectric Corp. Contractors & Engineers

RECORD SET

08/17/12

#210-85046

5650 W. Centinela Ave., Los Angeles, CA 90045, (310) 337-1377



A1 Key Plan
N.T.S.

08/17/12

5850 W. Centinela Ave., Los Angeles, CA 90045, (310) 337-1377

PROJECT NAME
CHILDREN'S HOSPITAL
OF ORANGE COUNTY
455 S. Main St.
Orange, CA 92868-3874

TOWER II



PROJECT NUMBER

12011.00
Increment #7

OSHPD - PROJECT NUMBER
IL 072072-30

ISSUE

OSHPD PERMIT

01/27/2010

SCALE

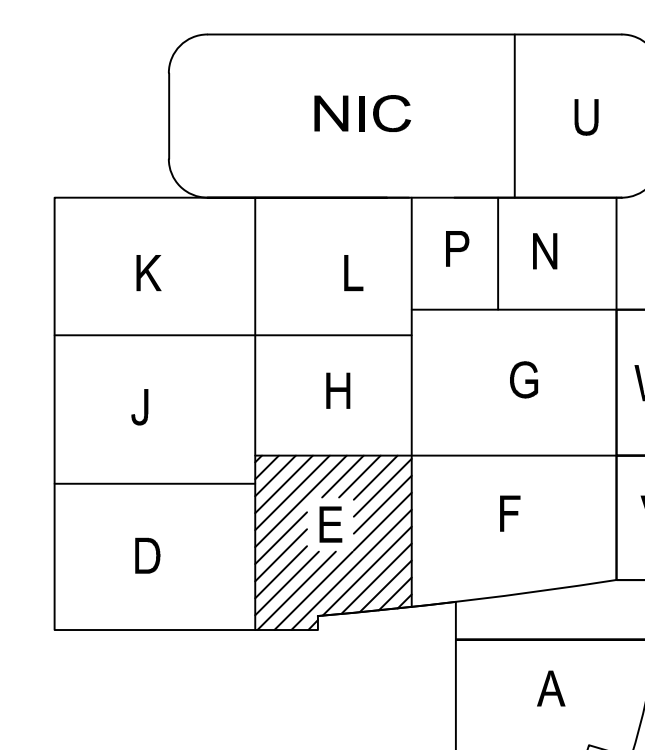
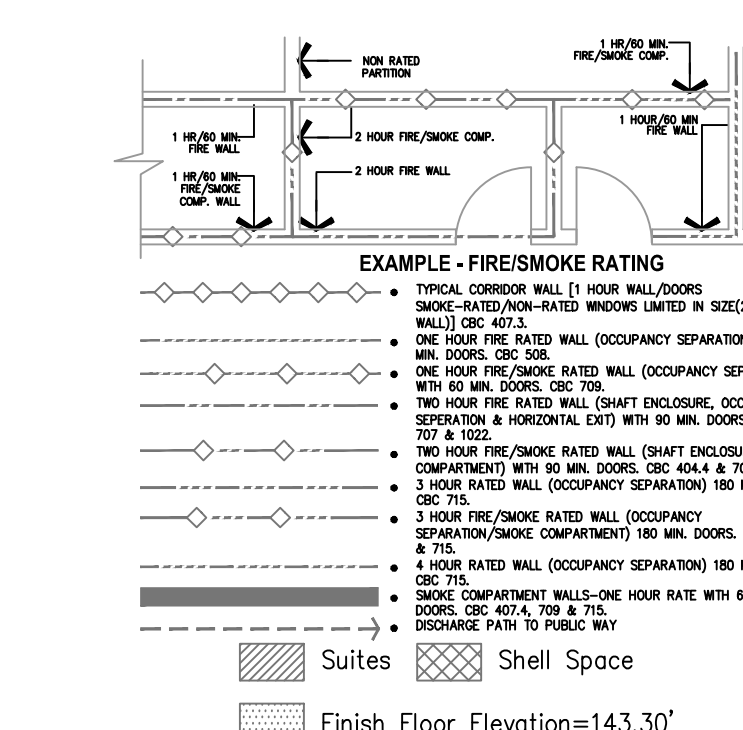
1/4" = 1'-0"

DRAWING TITLE

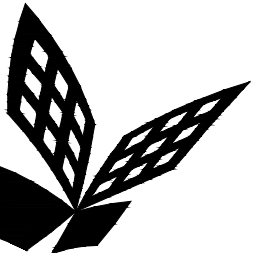
LEVEL 1 LIGHTING PLAN
AREA - E

DRAWING NUMBER

EL3.1E



A1 Key Plan



FKP Architects

ARCHITECT OF RECORD

CONSULTANT

T M A D
TAYLOR
& G AINES

STRUCTURAL
MECHANICAL
ELECTRICAL
CIVIL

100 South Anaheim Boulevard, Suite 150
Anaheim, California 92805
Phone: 714.490.5555 Fax: 714.490.5560
Project No. 2305-163-07

REVISIONS

12/19/11 CHANGE ORDER #294

APPROVAL

PROJECT NAME

CHILDREN'S HOSPITAL
OF ORANGE COUNTY

455 S. Main St.
Orange, CA 92868-3874

TOWER II



PROJECT NUMBER

12011.00
Increment #7

OSHPD - PROJECT NUMBER

IL 072072-30

ISSUE

OSHPD PERMIT

DATE

01/27/2010

SCALE

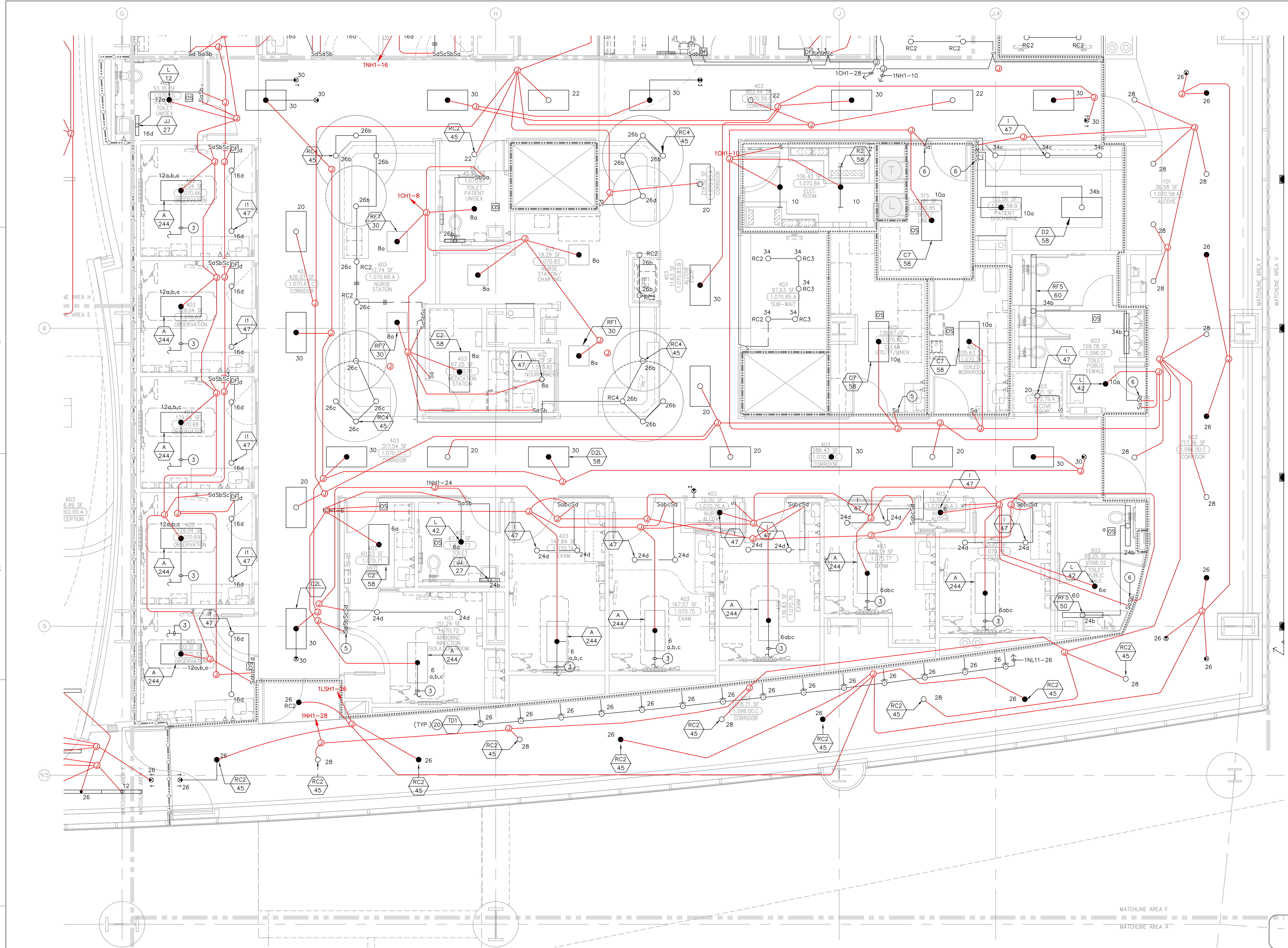
1/4" = 1'-0"

DRAWING TITLE

LEVEL 1 LIGHTING PLAN
AREA - F

DRAWING NUMBER

EL3.1F



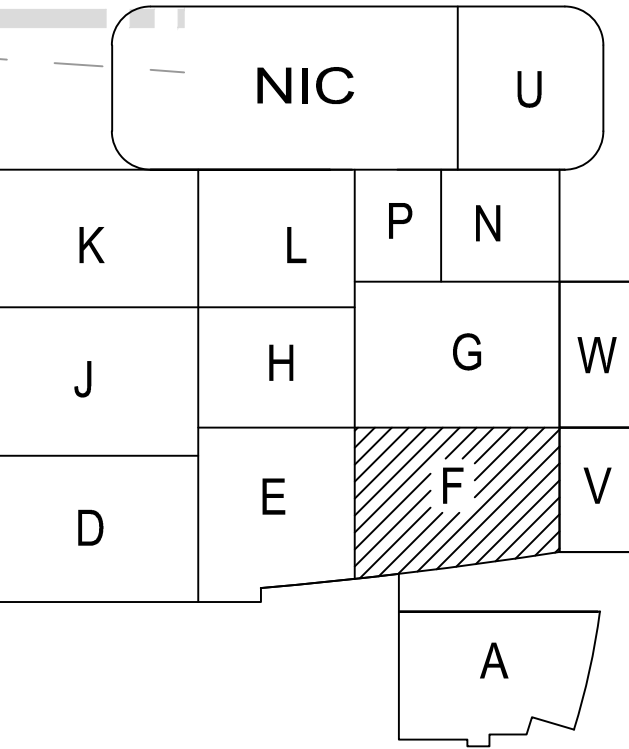
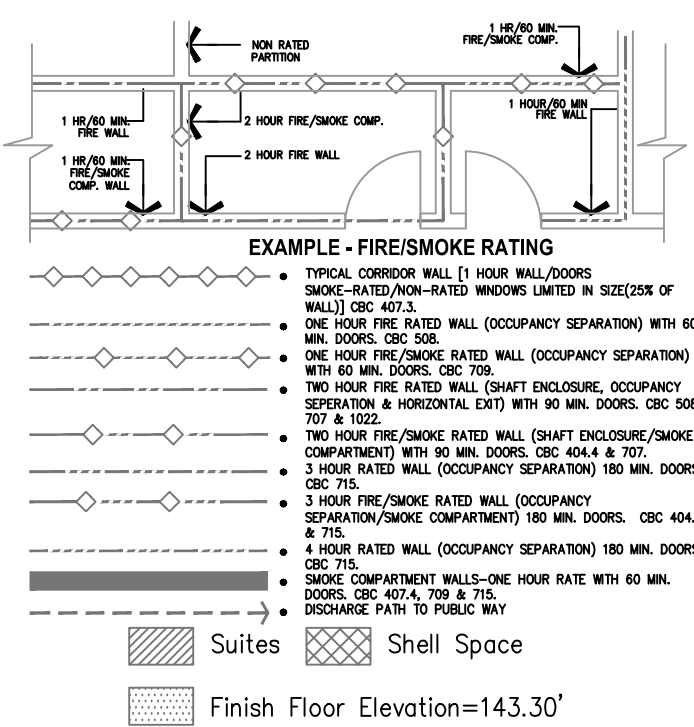
FOR KEY NOTES REFER TO SHEET "EL3A"

Bergelectric Corp. Contractors & Engineers

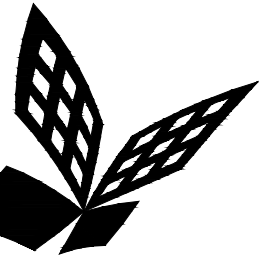
RECORD SET

08/17/12

5650 W. Centinela Ave., Los Angeles, CA 90045, (310) 337-1377



Key Plan
N.T.S.



FKP Architects

ARCHITECT OF RECORD

CONSULTANT

T M A D
TAYLOR
& GAINES

STRUCTURAL
MECHANICAL
ELECTRICAL
CIVIL

100 South Anaheim Boulevard, Suite 150
Anaheim, California 92805
Phone: 714.490.5555 Fax: 714.490.5560
Project No. 2305-163-07

REVISIONS

08/12/11 CHANGE ORDER #266

APPROVAL

PROJECT NAME

CHILDREN'S HOSPITAL
OF ORANGE COUNTY

455 S. Main St.
Orange, CA 92668-3874

TOWER II



PROJECT NUMBER

12011.00
Increment #7

OSHPD - PROJECT NUMBER
IL 072072-30

ISSUE

OSHPD PERMIT

DATE

01/27/2010

SCALE

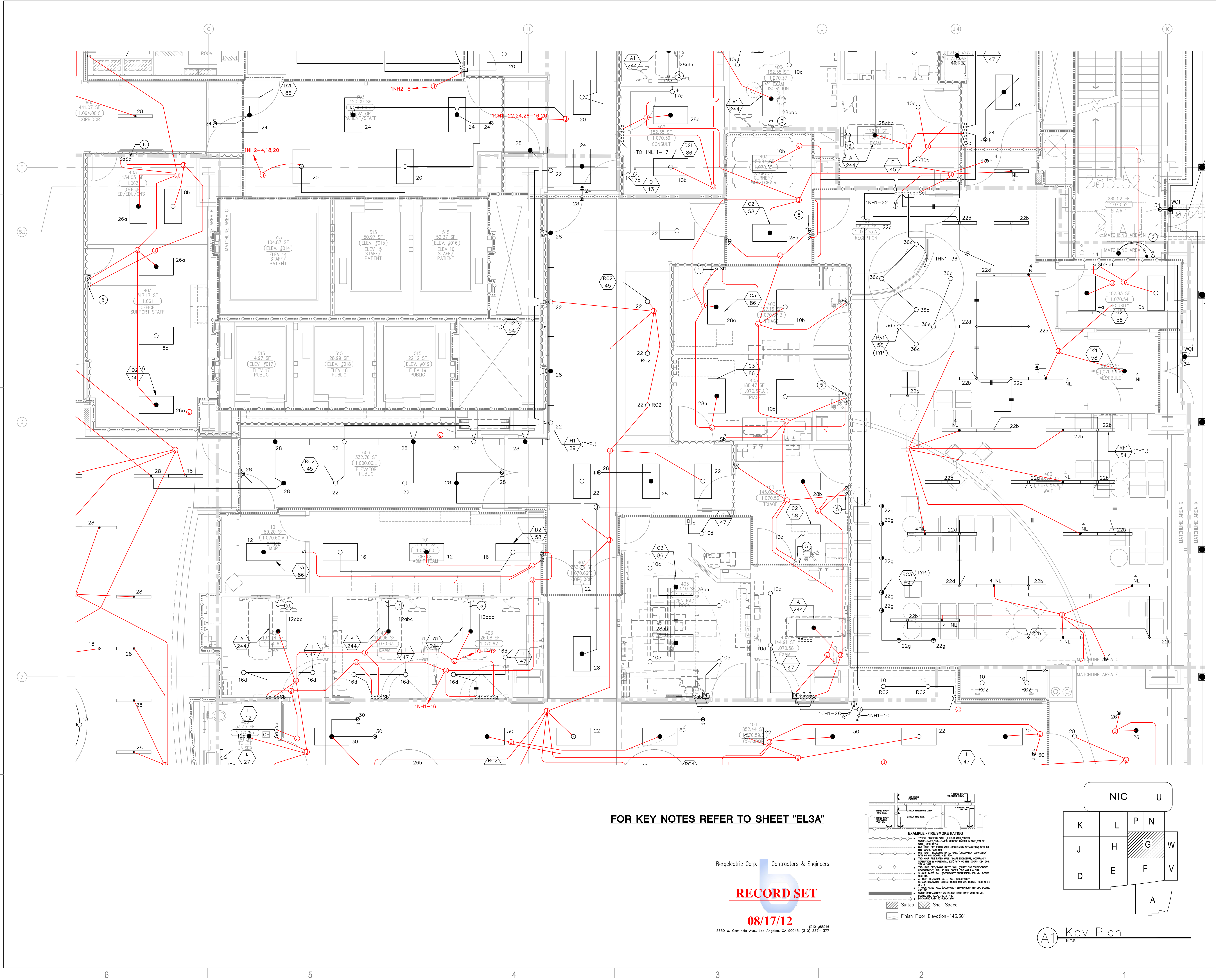
1/4" = 1'-0"

DRAWING TITLE

LEVEL 1 LIGHTING PLAN
AREA - G

DRAWING NUMBER

EL3.1G



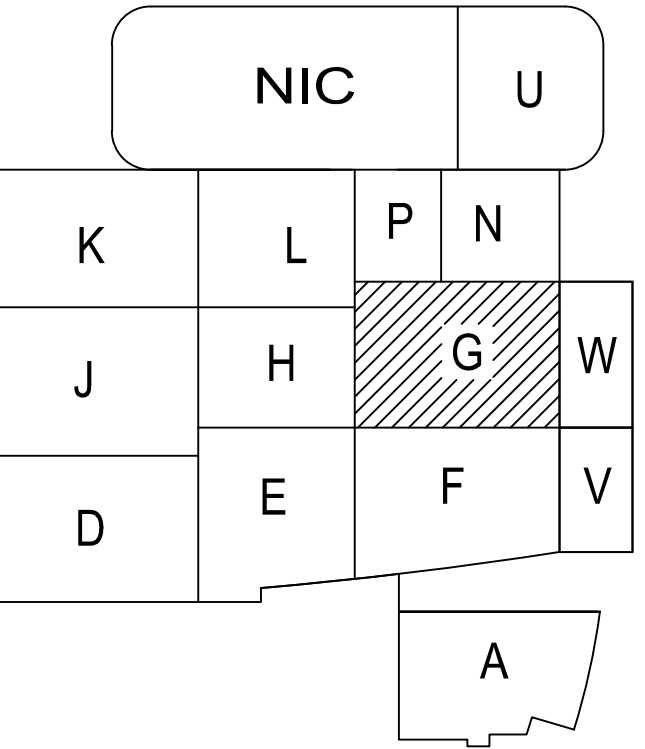
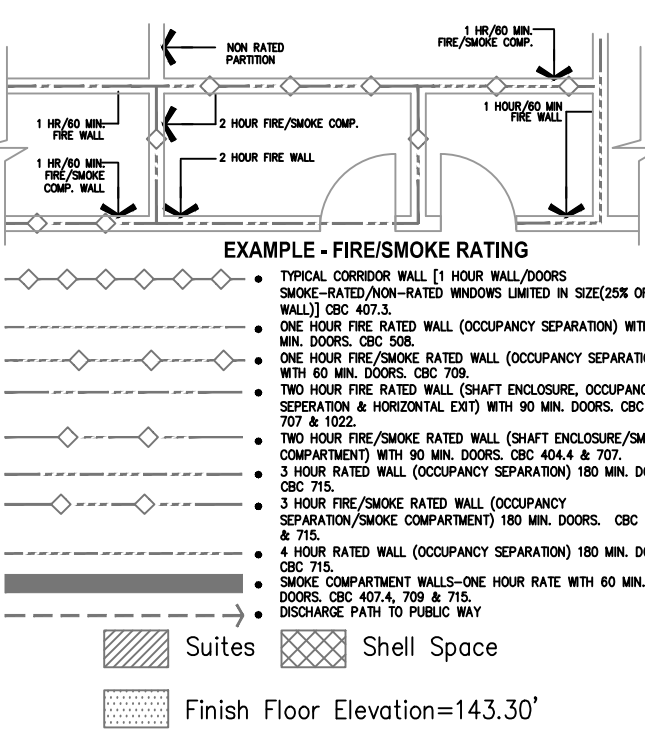
FOR KEY NOTES REFER TO SHEET "EL3A"

Bergelectric Corp. Contractors & Engineers

RECORD SET

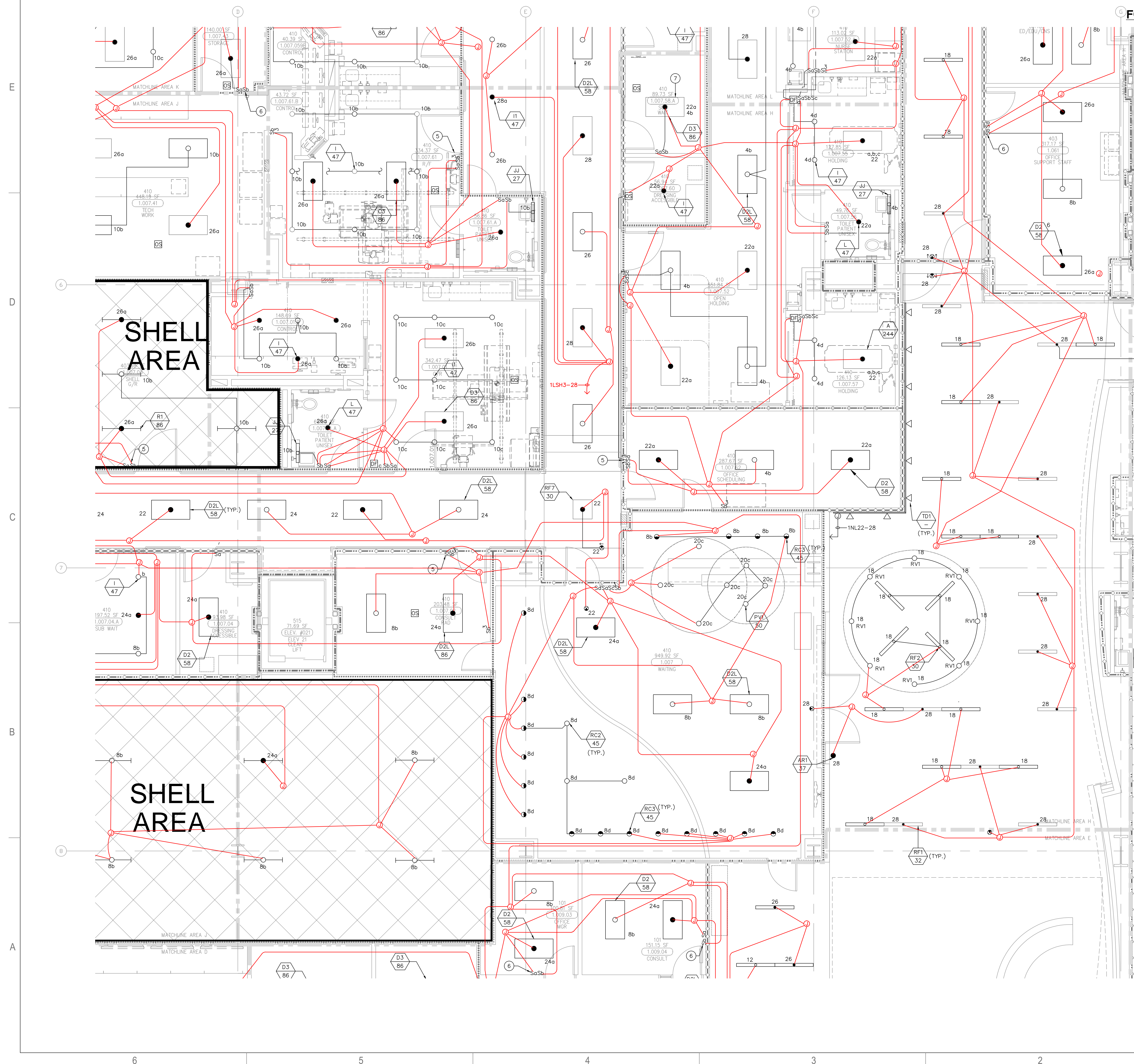
08/17/12

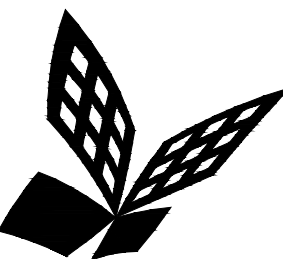
5650 W. Centinela Ave., Los Angeles, CA 90045 (310) 357-1377



A1 Key Plan
N.T.S.

EL3.1H





FKP Architects

ARCHITECT OF RECORD

CONSULTANT

T M A D
TAYLOR
& G AINES
100 South Anaheim Boulevard, Suite 150
Anaheim, California 92805
Phone: 714.490.5555 Fax: 714.490.5560
Project No. 2305-163-07

REVISIONS

APPROVAL

Bergelectric Corp. Contractors & Engineers

RECORD SET

08/17/12

5650 W. Centinella Ave., Los Angeles, CA 90045, (310) 337-1377

PROJECT NAME
**CHILDREN'S HOSPITAL
OF ORANGE COUNTY**
455 S. Main St.
Orange, CA 92868-3874

TOWER II



PROJECT NUMBER

**12011.00
Increment #7**

OSHPD - PROJECT NUMBER
IL 072072-30

ISSUE

OSHPD PERMIT

DATE

01/27/2010

SCALE

1/4" = 1' - 0"

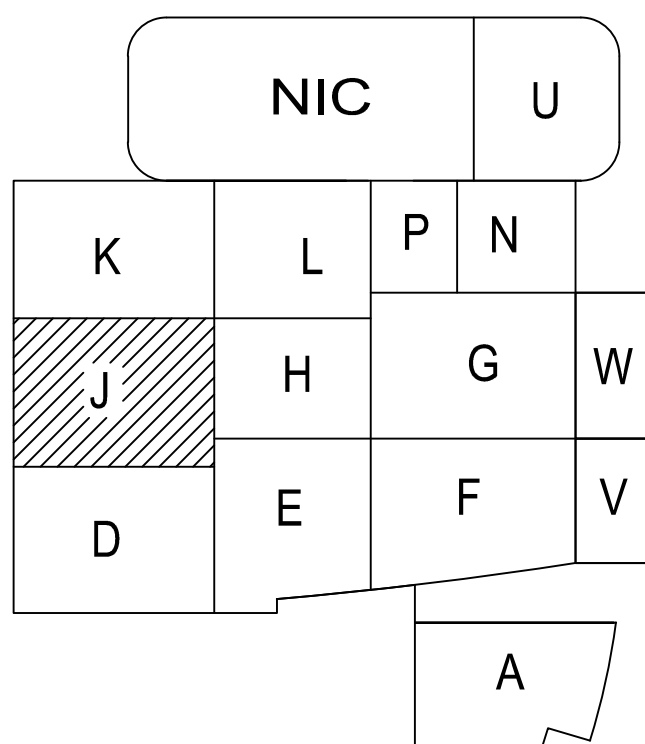
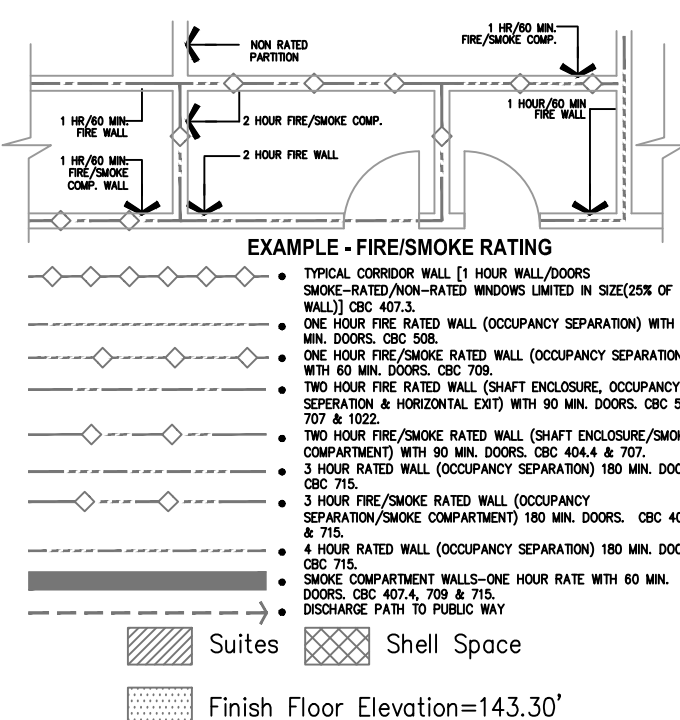
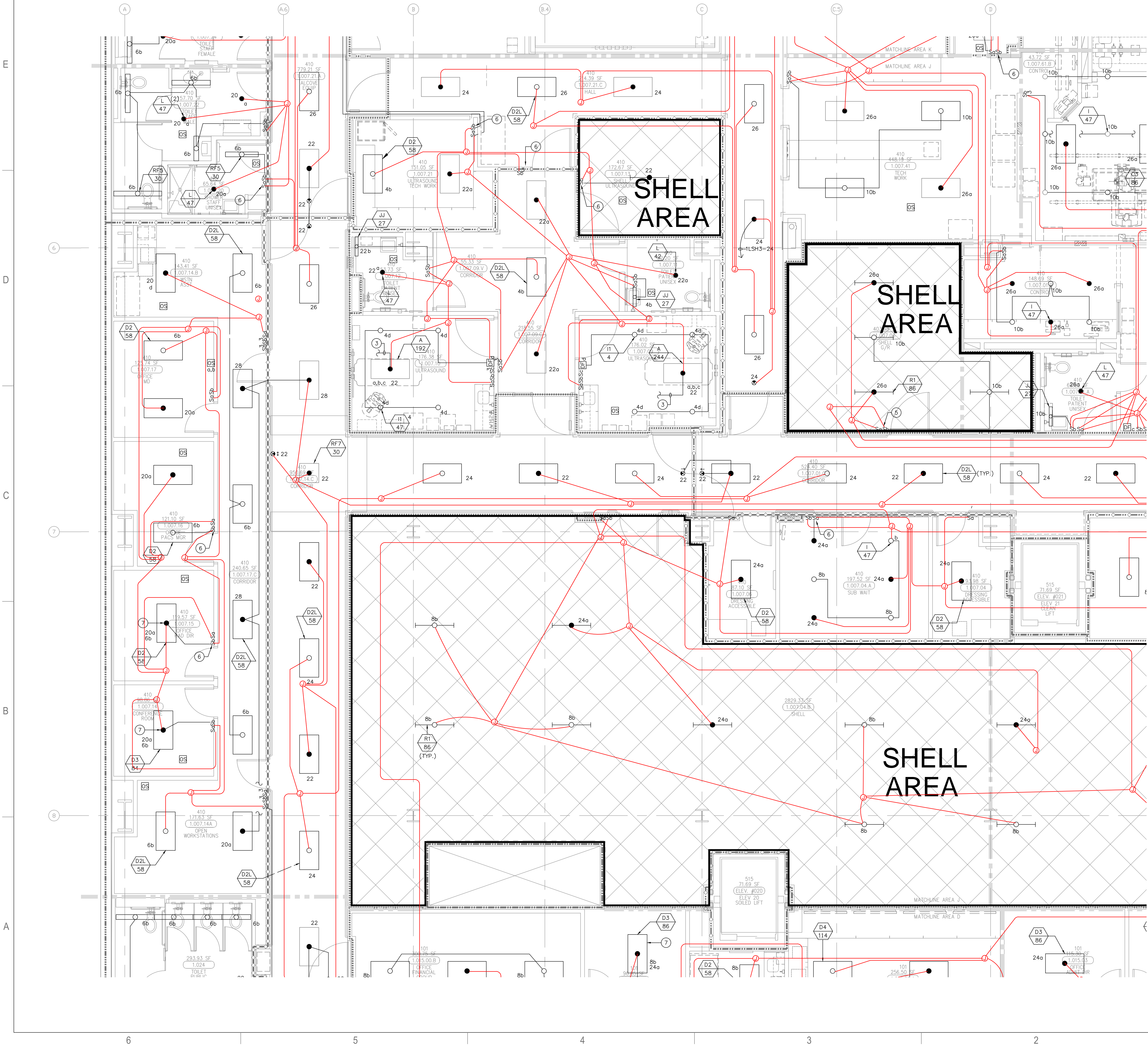
DRAWING TITLE

**LEVEL 1 LIGHTING PLAN
AREA - J**

DRAWING NUMBER

EL3.1J

FOR KEY NOTES REFER TO SHEET "EL3A"

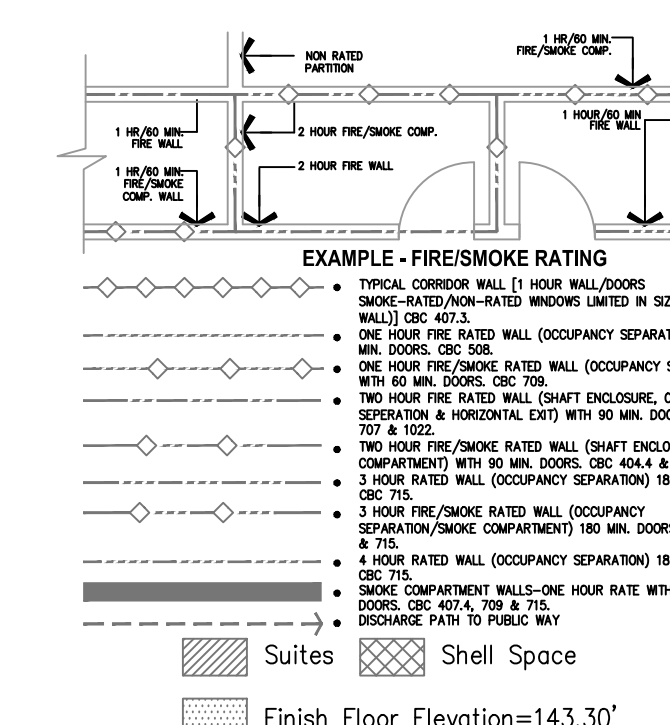


A1 Key Plan
N.T.S.

RECORD SET

08/17/12

5850 W. Centinela Ave., Los Angeles, CA 90045, (310) 337-1377



PROJECT NAME

CHILDREN'S HOSPITAL
OF ORANGE COUNTY

455 S. Main St.
Orange, CA 92868-3874

TOWER II



PROJECT NUMBER

12011.00
Increment #7

OSHPD - PROJECT NUMBER
IL 072072-30

ISSUE

OSHPD PERMIT

DATE _____

01/27/2010

SCALE

$$1/4" = 1'-0"$$

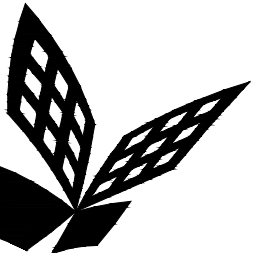
LEVEL 1 LIGHTING PLAN
AREA - L

DRAWING NUMBER

EL3.1L

A1 Key Plan
N.T.S.

A1 Key Plan
N.T.S.



FKP Architects

ARCHITECT OF RECORD

CONSULTANT

T M A D
TAYLOR
& GAINES

- STRUCTURAL
- MECHANICAL
- ELECTRICAL
- CIVIL

100 South Anaheim Boulevard, Suite 150
Anaheim, California 92805
Phone: 714.490.5555 Fax: 714.490.5560
Project No. 2305-163-07

REVISIONS

| | | |
|-----|----------|-------------------|
| 72 | 11/18/10 | CHANGE ORDER #63 |
| 81A | 08/22/11 | CHANGE ORDER #247 |
| 89A | 12/05/11 | CHANGE ORDER #303 |
| 89T | 12/19/11 | CHANGE ORDER #294 |
| 87A | 12/20/11 | ASI #128 |

APPROVAL

FOR KEY NOTES
REFER TO SHEET "EL3A"

Bergelectric Corp. Contractors & Engineers

RECORD SET

08/17/12

#C10-885046
5650 W. Centinella Ave., Los Angeles, CA 90045, (310) 337-1377

PROJECT NAME

**CHILDREN'S HOSPITAL
OF ORANGE COUNTY**
455 S. Main St.
Orange, CA 92668-3874

TOWER II



PROJECT NUMBER

**12011.00
Increment #7**

OSHPD - PROJECT NUMBER

IL 072072-30

ISSUE

OSHPD PERMIT

DATE

01/27/2010

SCALE

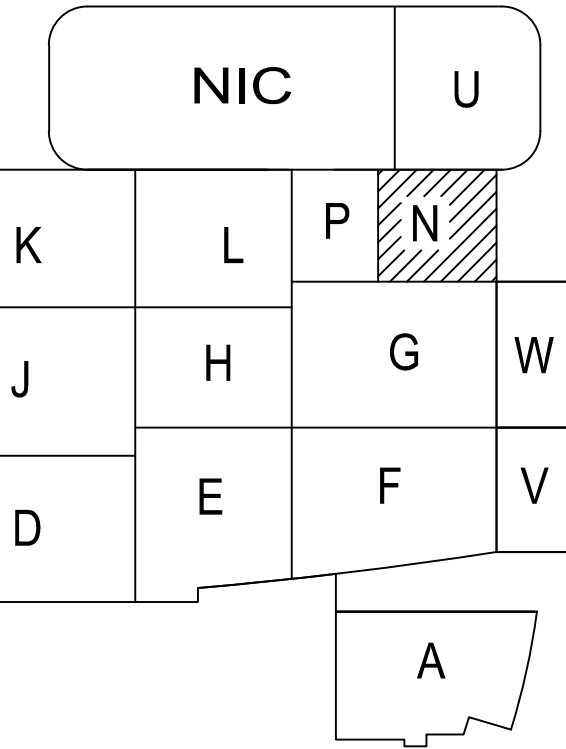
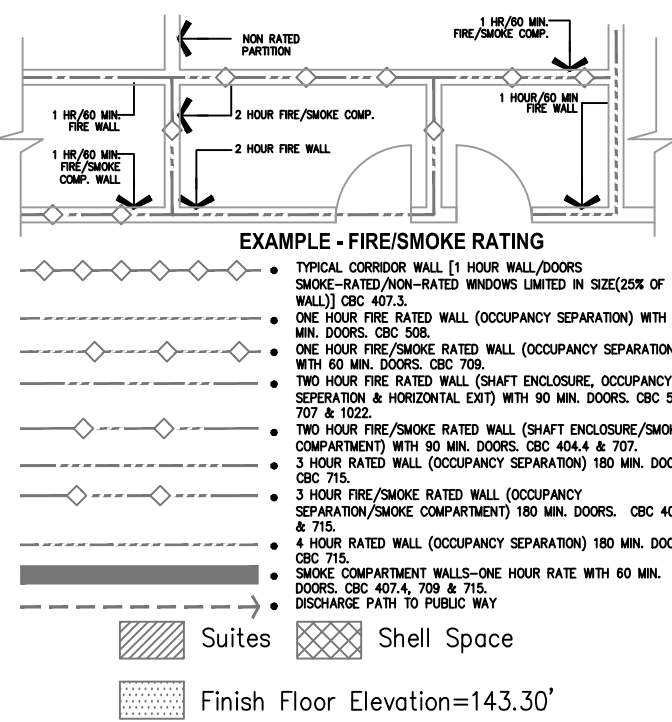
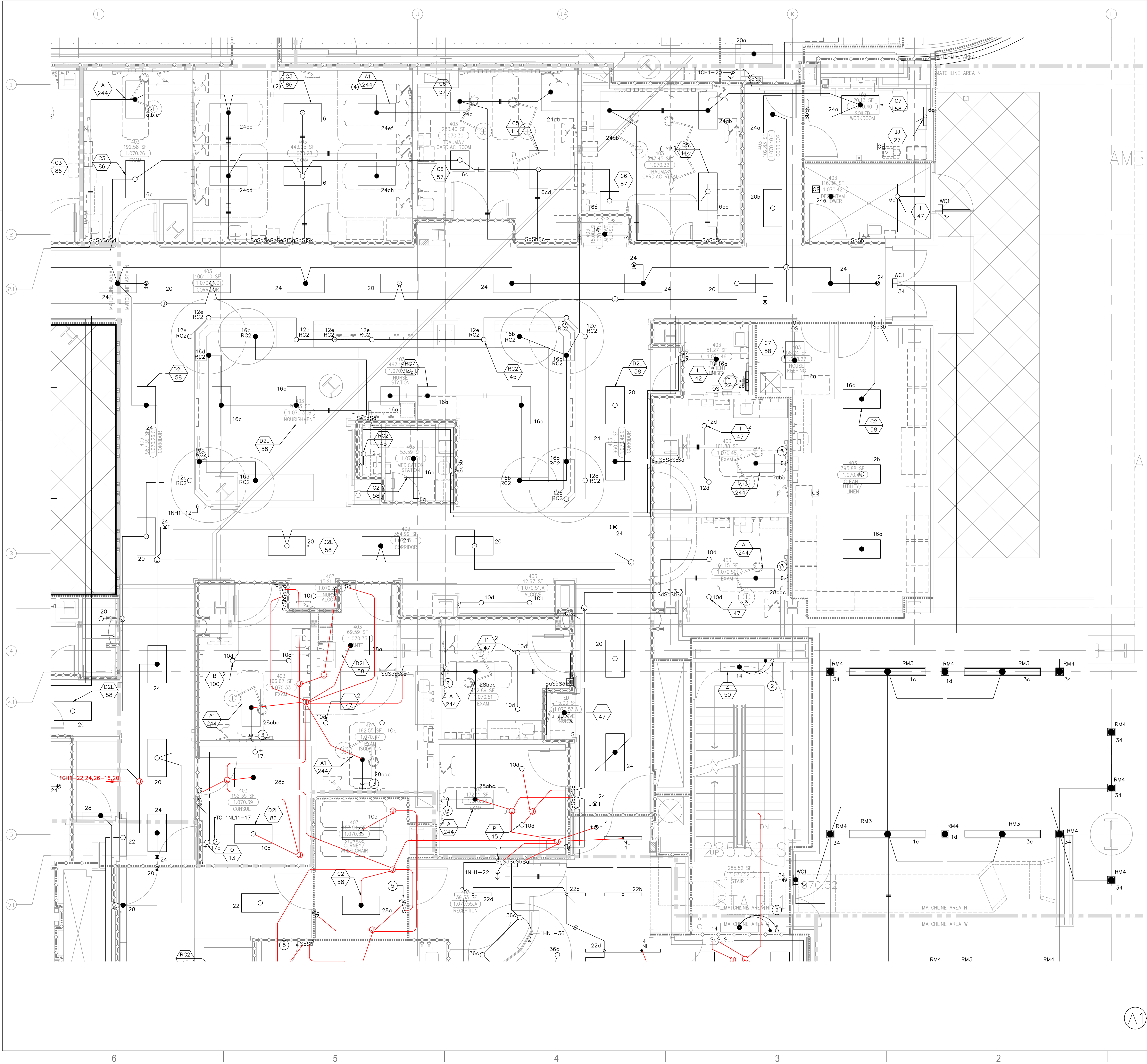
1/4"=1'-0"

DRAWING TITLE

**LEVEL 1 LIGHTING PLAN
AREA - N**

DRAWING NUMBER

EL3.1N



A1 Key Plan
N.T.S.

08/17/12

5650 W. Centinela Ave., Los Angeles, CA 90045. (310) 337-1377

PROJECT NAME

CHILDREN'S HOSPITAL
OF ORANGE COUNTY

455 S. Main St.
Orange, CA 92868-3874

TOWER II



PROJECT NUMBER

12011.00
Increment #7

OSHPD - PROJECT NUMBER
IL 072072-30

ISSUE

OSHPD PERMIT

DATE _____

01/27/2010

SCALE

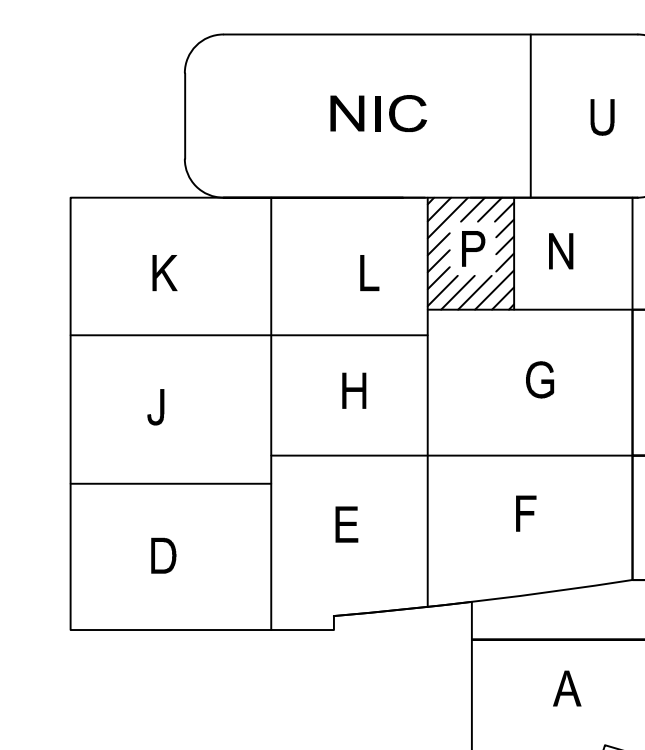
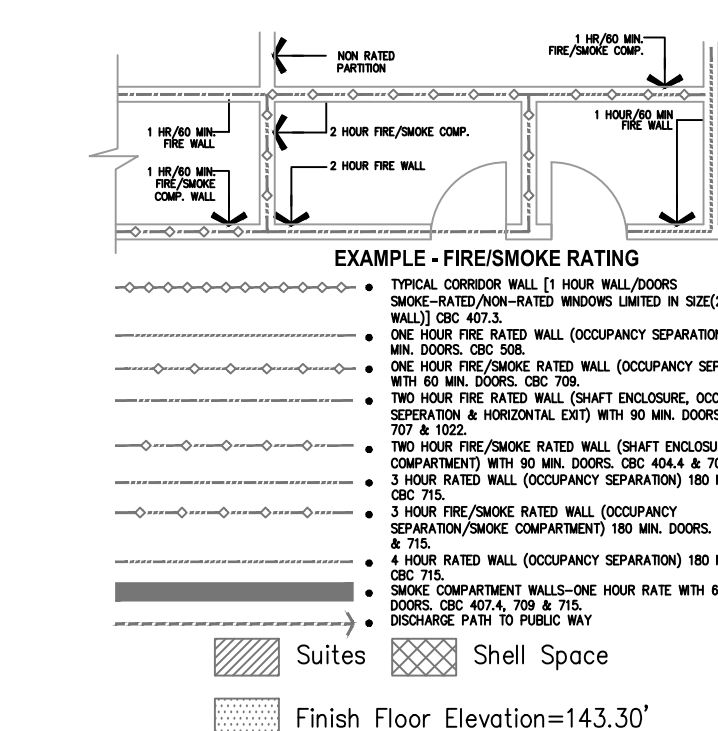
$$1/4'' = 1' 0''$$

DRAWING TITLE

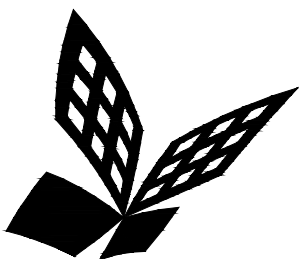
LEVEL 1 LIGHTING PLAN
AREA - P

DRAWING NUMBER

EL3.1P



A1 Key Plan
N.T.S.



FKP Architects

ARCHITECT OF RECORD

CONSULTANT

T M A D
TAYLOR
& G AINES

- STRUCTURAL
- MECHANICAL
- ELECTRICAL
- CIVIL

100 South Anaheim Boulevard, Suite 150
Anaheim, California 92805
Phone: 714.490.5555 Fax: 714.490.5560
Project No. 2305-163-07

REVISIONS

8/7 10/26/11 CHANGE ORDER #289

APPROVAL

PROJECT NAME

**CHILDREN'S HOSPITAL
OF ORANGE COUNTY**
455 S. Main St.
Orange, CA 92668-3874

TOWER II



PROJECT NUMBER

**12011.00
Increment #7**

OSHPD - PROJECT NUMBER
IL 072072-30

ISSUE

OSHPD PERMIT

DATE

01/27/2010

SCALE

1/4"=1'-0"

DRAWING TITLE

**LEVEL 1 LIGHTING PLAN
AREA - U**

DRAWING NUMBER

EL3.1U

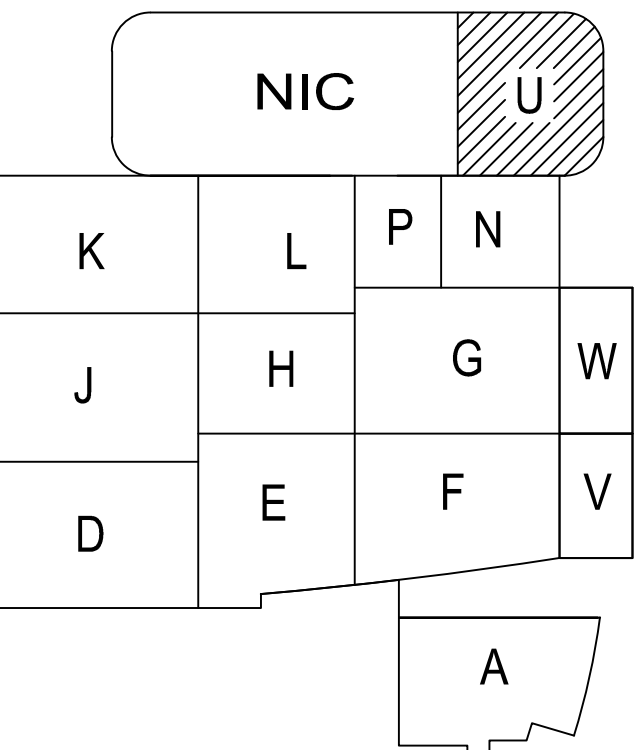
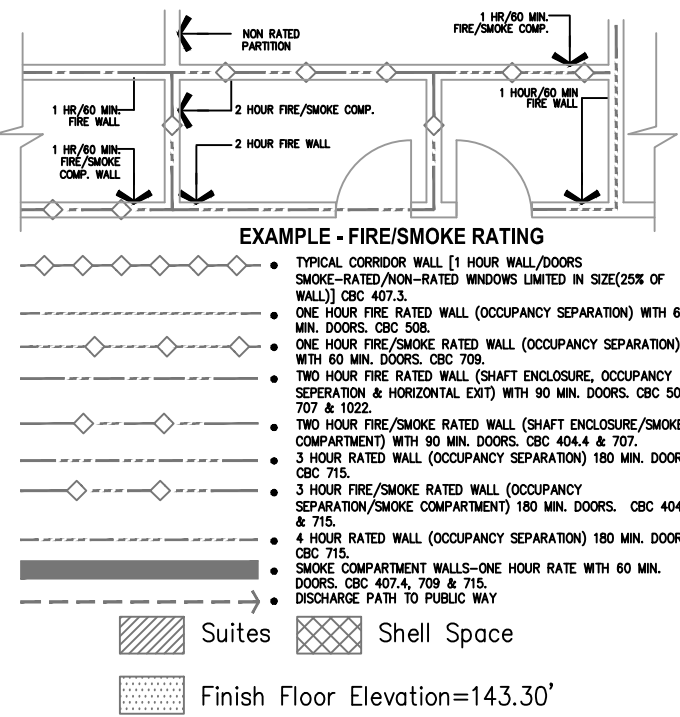
FOR KEY NOTES REFER TO SHEET "EL3A"

Bergelectric Corp. Contractors & Engineers

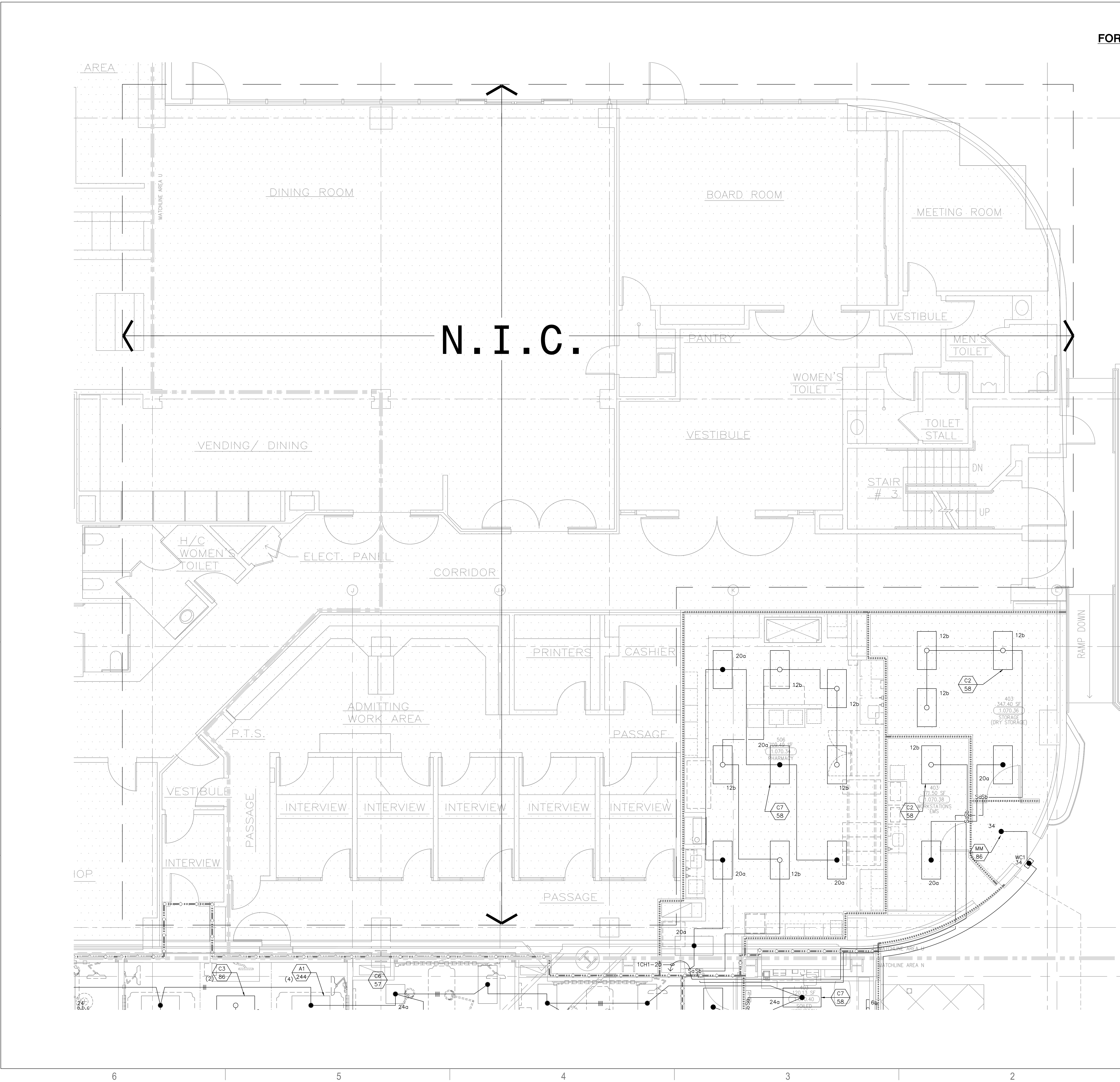
RECORD SET

08/17/12

8/10-85046
5650 W. Centinela Ave., Los Angeles, CA 90045, (310) 357-1377



(A1) Key Plan
N.T.S.



EL3.1W
