

FKP Architects

ARCHITECT OF RECORD

CONSULTANT

T M A D
TAYLOR
& GAINES

- STRUCTURAL
- MECHANICAL
- ELECTRICAL
- CIVIL

100 South Anaheim Boulevard, Suite 150
Anaheim, California 92805
Phone: 714.490.5555 Fax: 714.490.5560
Project No. 2305-163-07

REVISIONS

492 02/02/12 CHANGE ORDER #300

APPROVAL

PROJECT NAME

**CHILDREN'S HOSPITAL
OF ORANGE COUNTY**

455 S. Main St.
Orange, CA 92868-3874

TOWER II



PROJECT NUMBER

12011.00
Increment #7

OSHPD - PROJECT NUMBER
IL 072072-30

ISSUE

OSHPD PERMIT

DATE

01/27/2010

SCALE

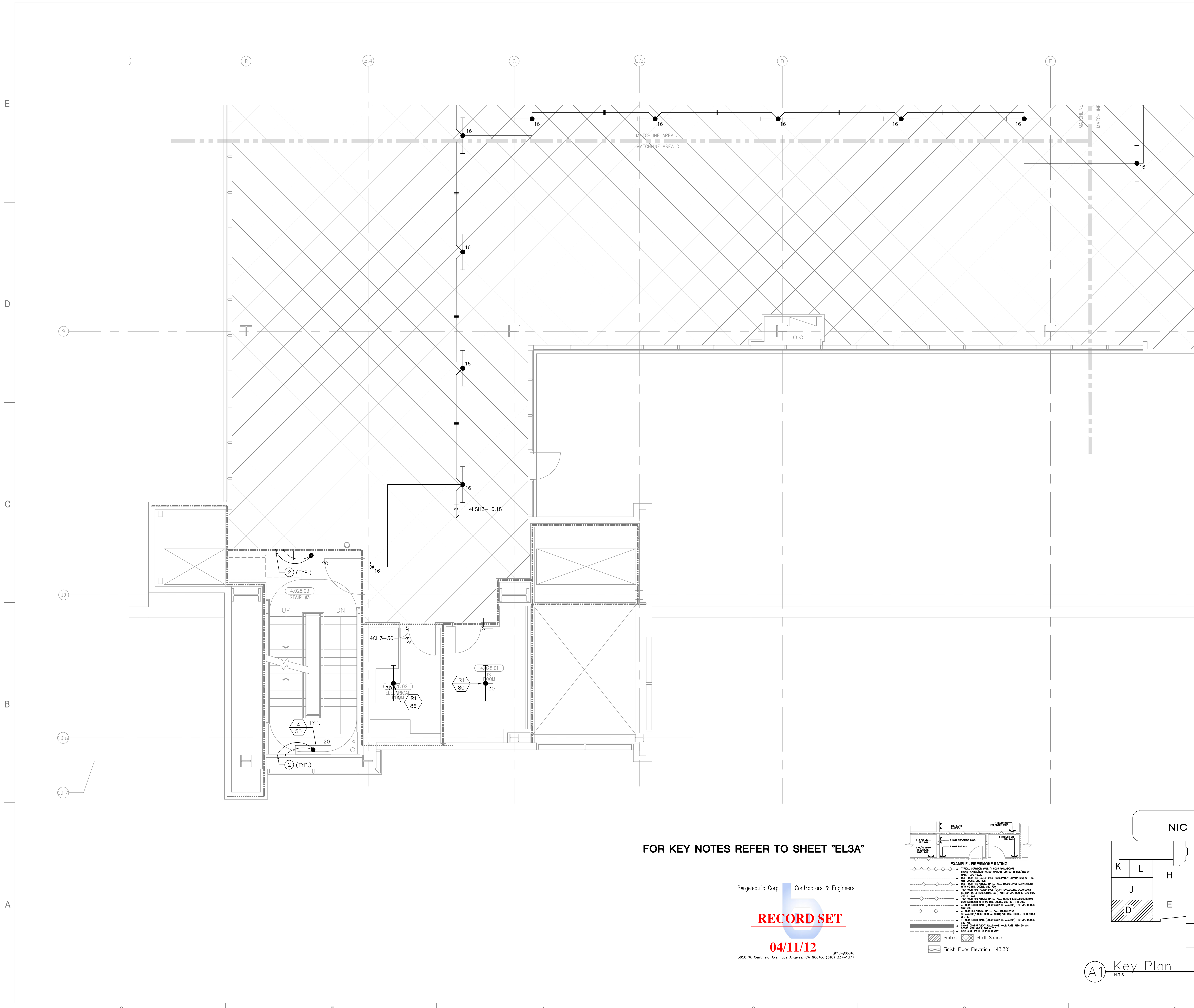
1/4" = 1' - 0"

DRAWING TITLE

LEVEL 4 LIGHTING PLAN
AREA - D

DRAWING NUMBER

EL3.4D



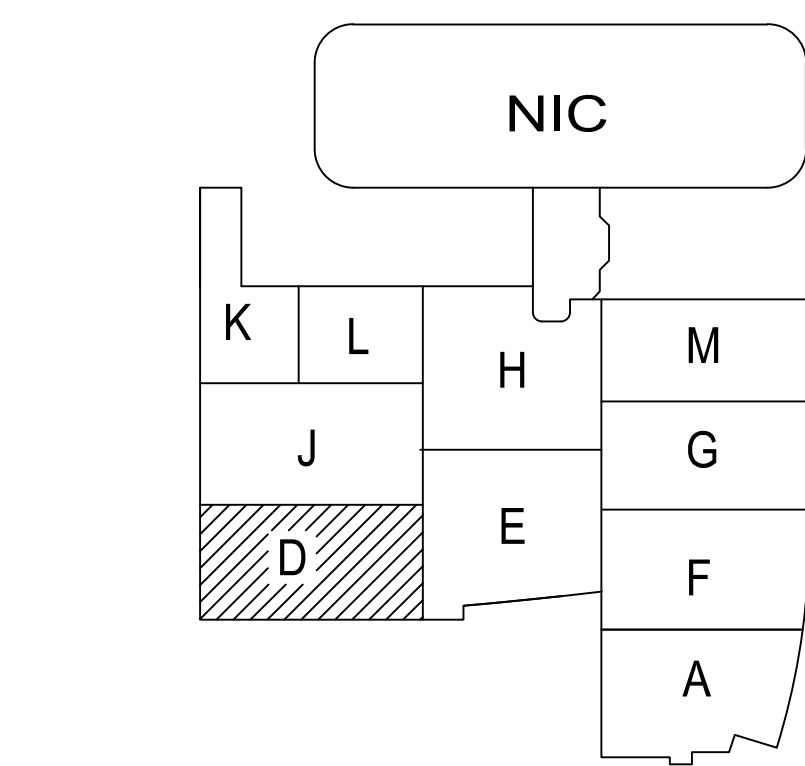
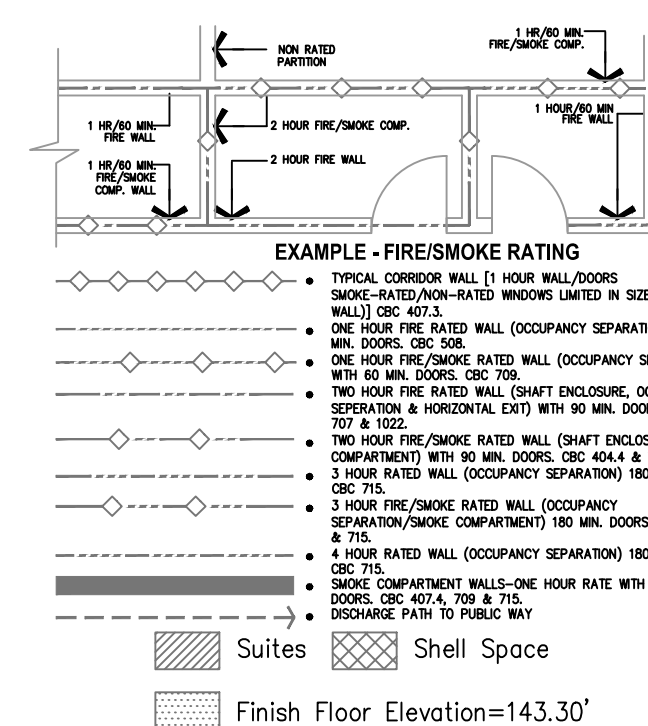
FOR KEY NOTES REFER TO SHEET "EL3A"

Bergelectric Corp. Contractors & Engineers

RECORD SET

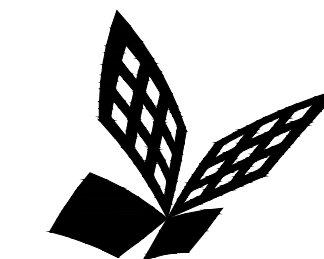
04/11/12

#C10-#85046
5850 W. Centinela Ave., Los Angeles, CA 90045, (310) 337-1377



A1 Key Plan
N.T.S.

F:\Projects\12011\12011_04_11_12\12011_04_11_12.dwg
 4/8/2012
 NE



FKP Architects

ARCHITECT OF RECORD

CONSULTANT

T M A D
TAYLOR
& GAINES

• STRUCTURAL
• MECHANICAL
• ELECTRICAL
• CIVIL

100 South Anaheim Boulevard, Suite 150
Anaheim, California 92805
Phone: 714.490.5555 Fax: 714.490.5560
Project No. 2305-163-07

REVISIONS

APPROVAL

PROJECT NAME

CHILDREN'S HOSPITAL
OF ORANGE COUNTY

455 S. Main St.
Orange, CA 92868-3874

TOWER II



PROJECT NUMBER

12011.00
Increment #7

OSHPD - PROJECT NUMBER
IL 072072-30

ISSUE

OSHPD PERMIT

DATE

01/27/2010

SCALE

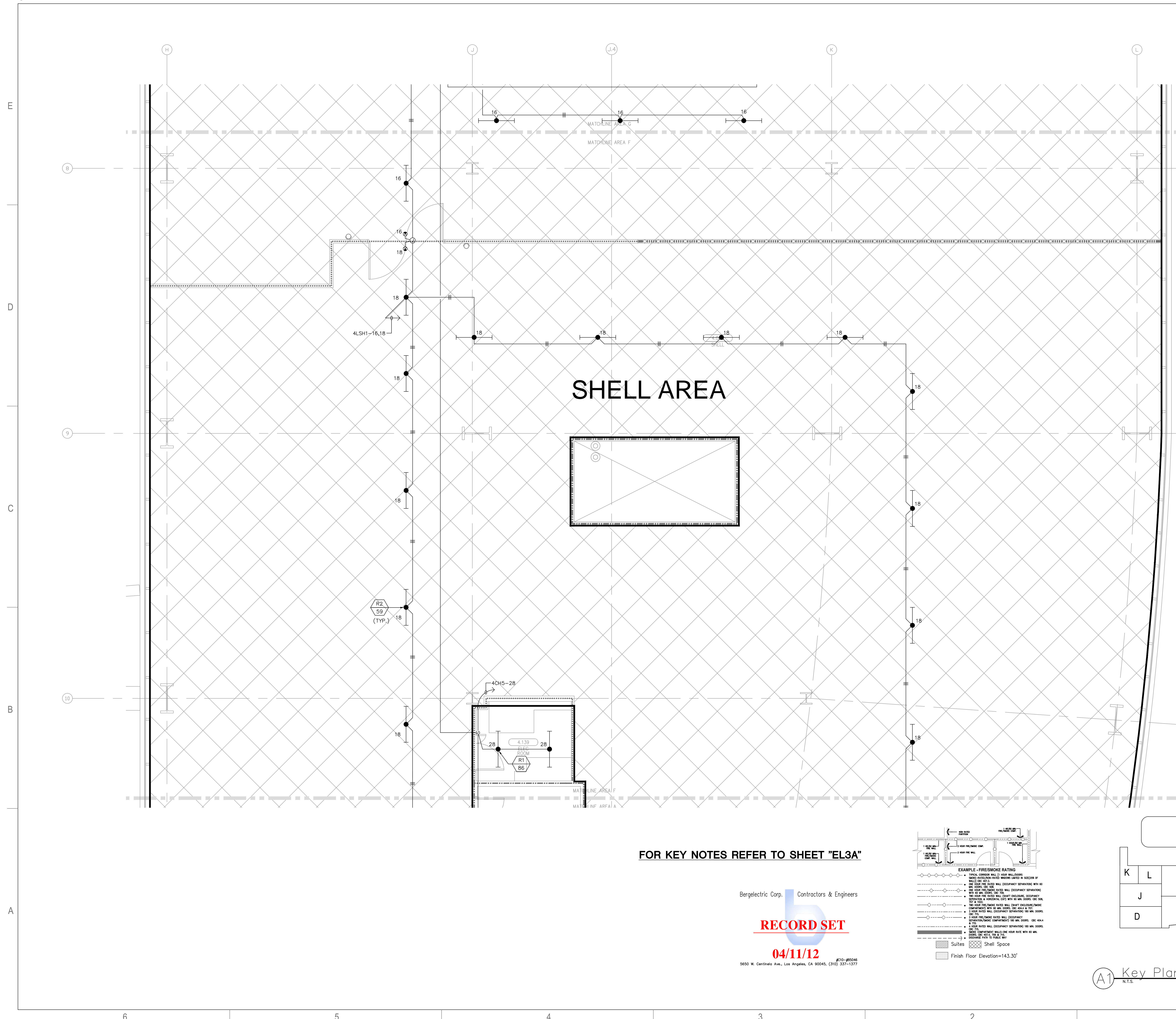
1/4" = 1' - 0"

DRAWING TITLE

LEVEL 4 LIGHTING PLAN
AREA - F

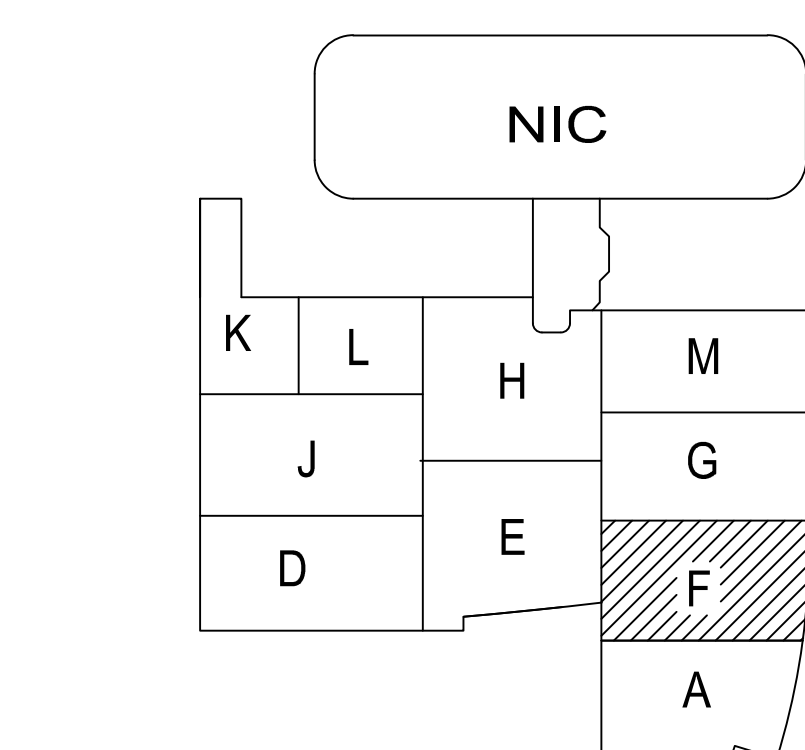
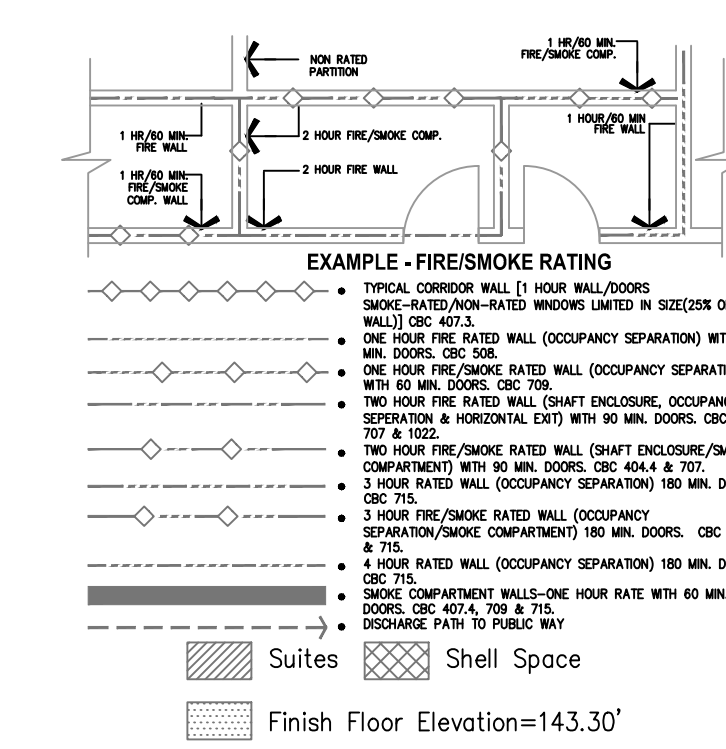
DRAWING NUMBER

EL3.4F

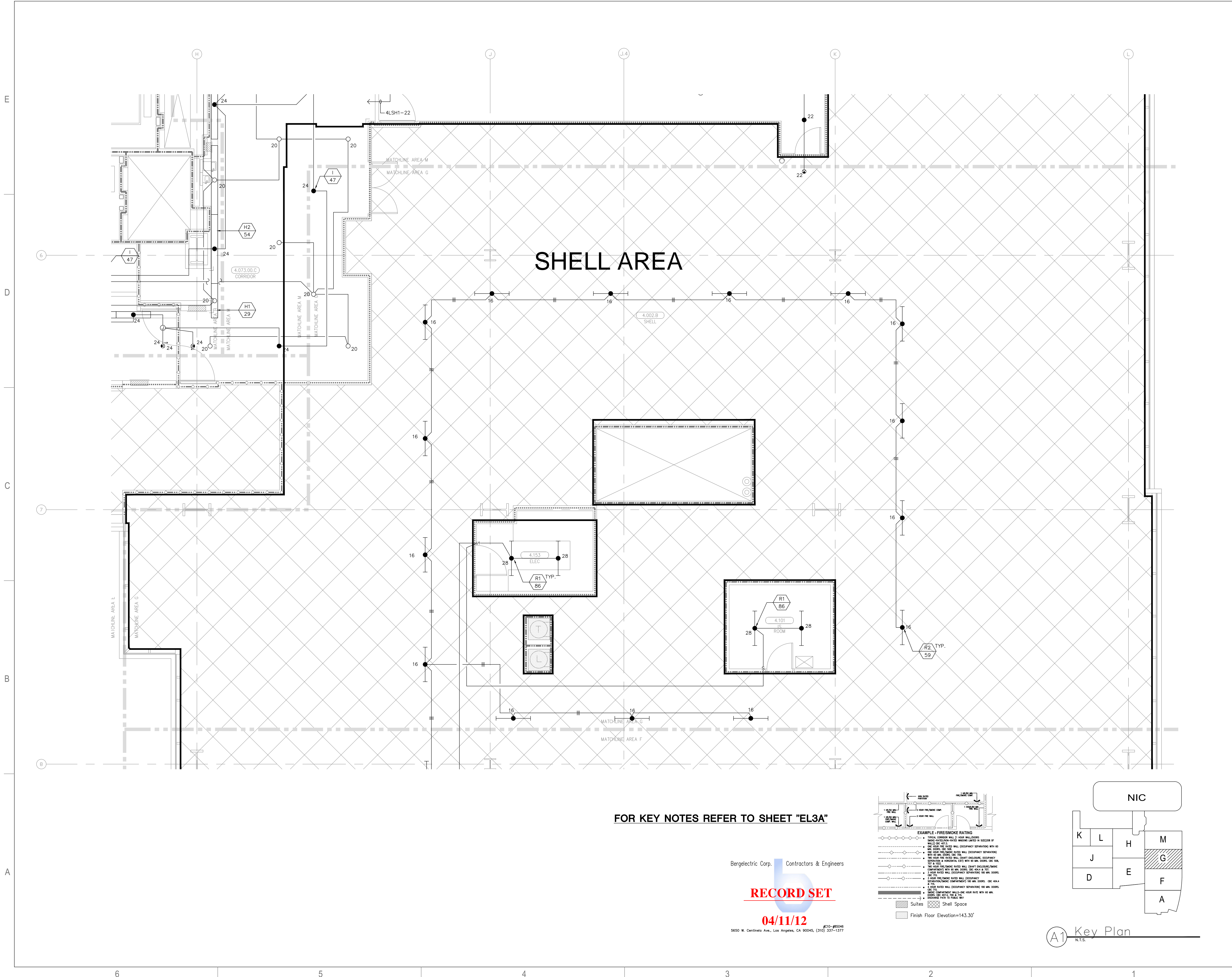
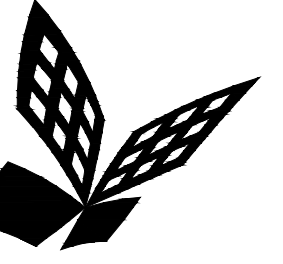


FOR KEY NOTES REFER TO SHEET "EL3A"

Bergelectric Corp. Contractors & Engineers
RECORD SET
04/11/12
#10-#55046
5650 W. Centinela Ave., Los Angeles, CA 90045, (310) 337-1377



F:\Projects\12011.00\12011.00_04_11_12\12011.00_04_11_12_04_11_12.dwg
 4/8/2012 11:56:00 AM



SHELL AREA

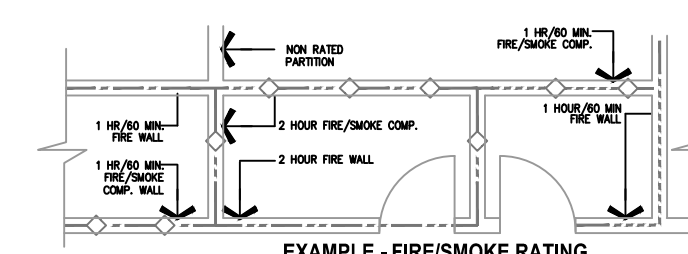
FOR KEY NOTES REFER TO SHEET "EL3A"

Bergelectric Corp. Contractors & Engineers

RECORD SET

04/11/12

5650 W. Centinela Ave., Los Angeles, CA 90045, (310) 337-1377

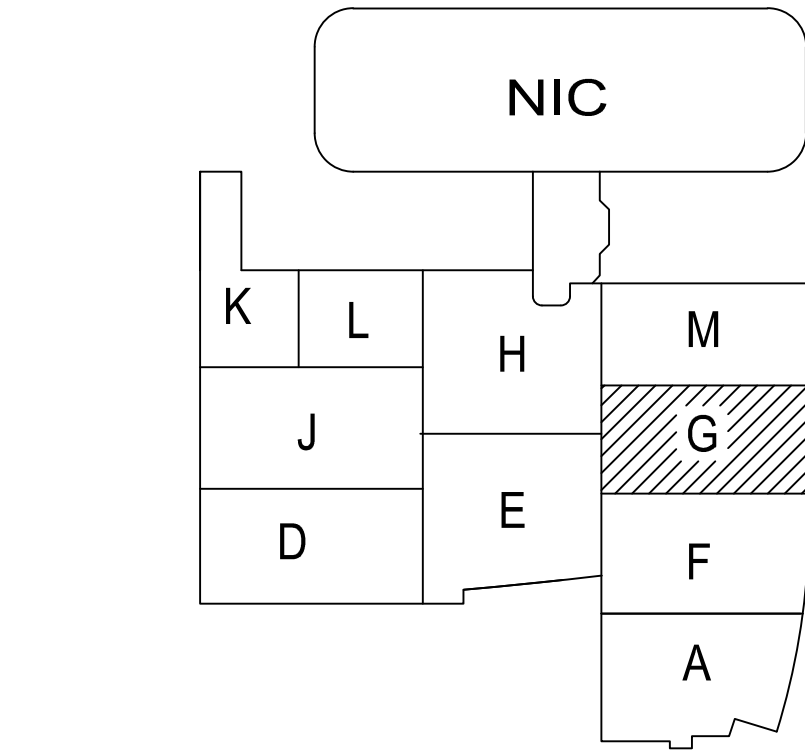


EXAMPLE - FIRE/SMOKE RATING

- 1 HOUR FIRE/SMOKE COMP.
- 2 HOUR FIRE/SMOKE COMP.
- 3 HOUR FIRE/SMOKE COMP.
- 4 HOUR FIRE/SMOKE COMP.

1 HOUR FIRE/SMOKE COMP. (with 45 min. door)
 2 HOUR FIRE/SMOKE COMP. (with 1 1/2 hr. door)
 3 HOUR FIRE/SMOKE COMP. (with 2 1/2 hr. door)
 4 HOUR FIRE/SMOKE COMP. (with 3 1/2 hr. door)

Legend:
 Suitses
 Shell Space
 Finish Floor Elevation=143.30'



A1 Key Plan
N.T.S.

ARCHITECT OF RECORD

CONSULTANT

T M A D
TAYLOR
& GAINES

- STRUCTURAL
- MECHANICAL
- ELECTRICAL
- CIVIL

100 South Anaheim Boulevard, Suite 150
 Anaheim, California 92805
 Phone: 714.490.5555 Fax: 714.490.5560
 Project No. 2305-163-07

REVISIONS

APPROVAL

PROJECT NAME

**CHILDREN'S HOSPITAL
OF ORANGE COUNTY**
 455 S. Main St.
 Orange, CA 92868-3874

TOWER II



PROJECT NUMBER

12011.00
Increment #7

OSHPD - PROJECT NUMBER
IL 072072-30

ISSUE

OSHPD PERMIT

DATE

01/27/2010

SCALE

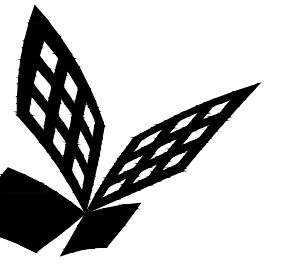
1/4" = 1' - 0"

DRAWING TITLE

**LEVEL 4 LIGHTING PLAN
AREA - G**

DRAWING NUMBER

EL3.4G



FKP Architects

ARCHITECT OF RECORD

CONSULTANT
T M A D
TAYLOR
& GAINES
• STRUCTURAL
• MECHANICAL
• ELECTRICAL
• CIVIL
100 South Anaheim Boulevard, Suite 150
Anaheim, California 92805
Phone: 714.490.5555 Fax: 714.490.5560
Project No. 2305-163-07

REVISIONS
A 02/02/12 CHANGE ORDER #300

APPROVAL

PROJECT NAME
CHILDREN'S HOSPITAL
OF ORANGE COUNTY
455 S. Main St.
Orange, CA 92868-3874

TOWER II



PROJECT NUMBER
12011.00
Increment #7
OSHPD - PROJECT NUMBER
IL 072072-30

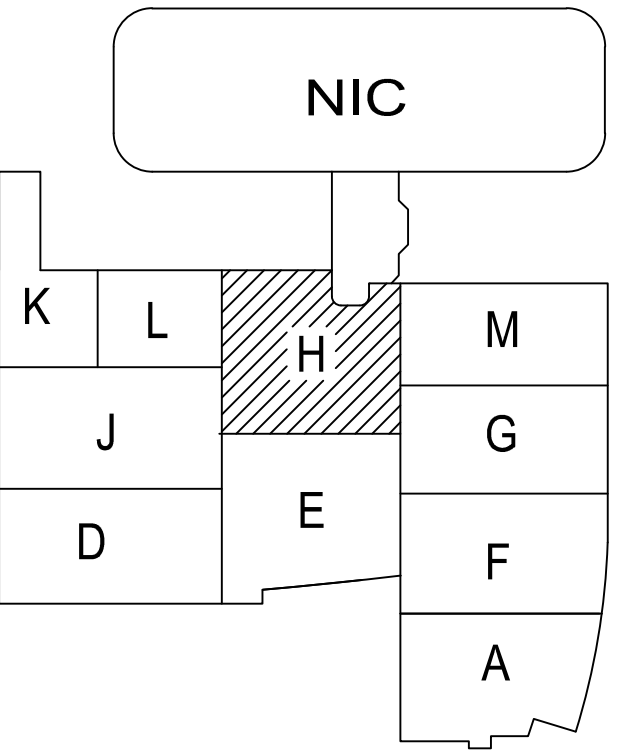
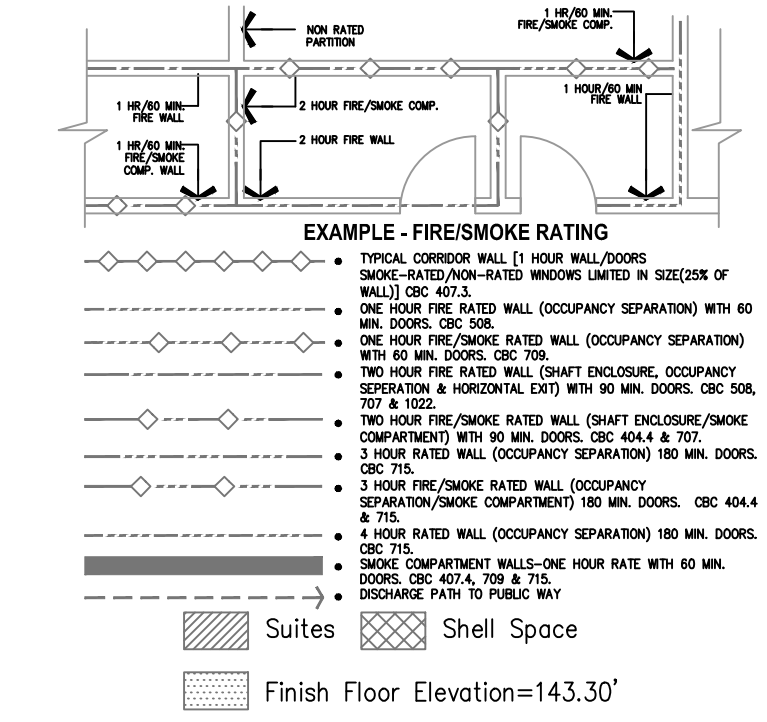
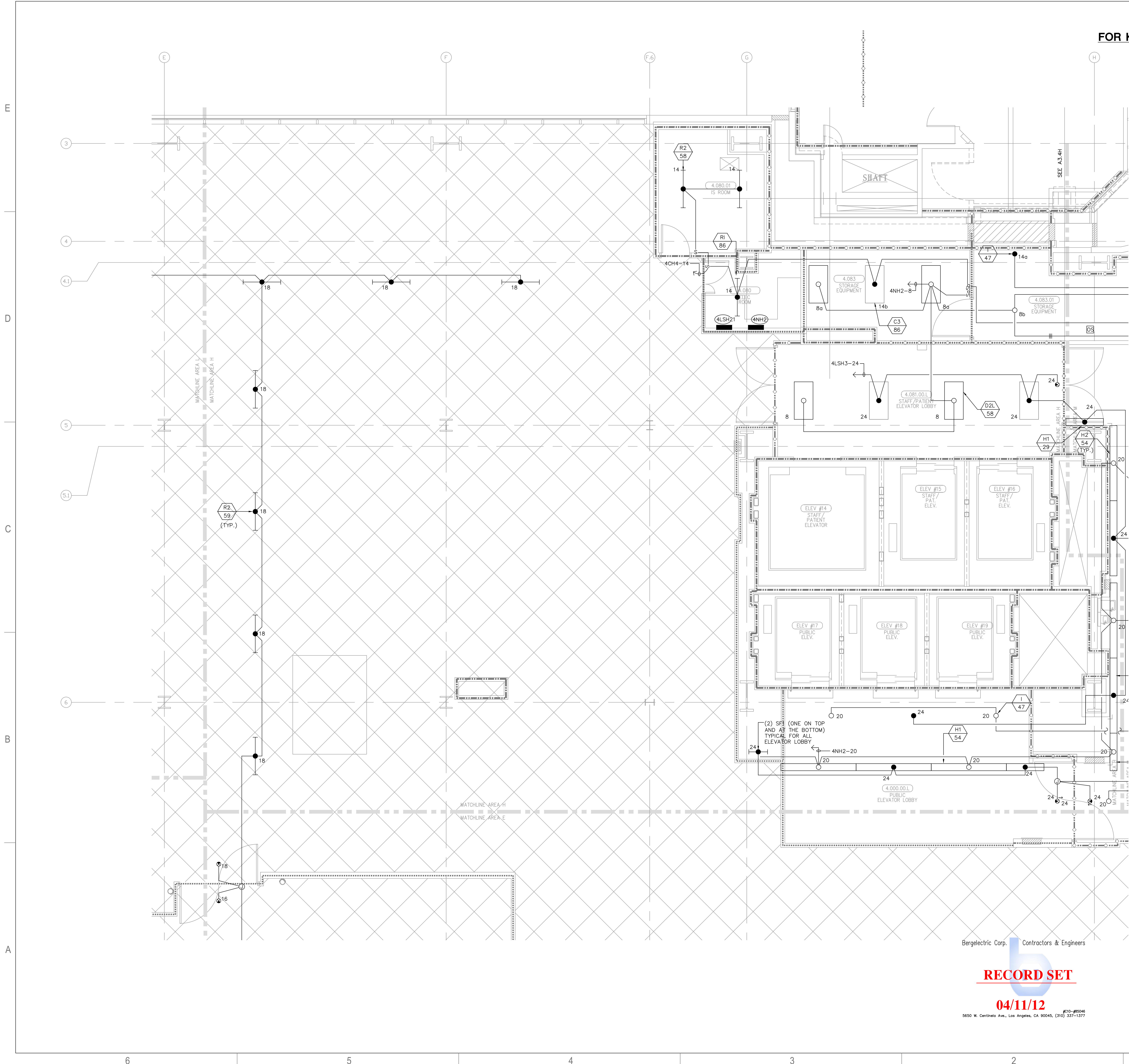
ISSUE
OSHPD PERMIT
DATE
01/27/2010
SCALE
1/4" = 1' - 0"
DRAWING TITLE

LEVEL 4 LIGHTING PLAN
AREA - H

DRAWING NUMBER

EL3.4H

FOR KEY NOTES REFER TO SHEET "EL3A"



Bergelectric Corp. Contractors & Engineers

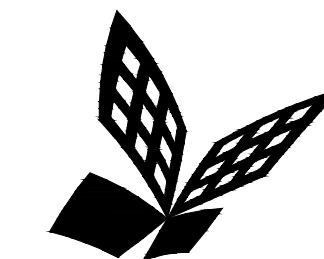
RECORD SET

04/11/12

5650 W. Centinela Ave., Los Angeles, CA 90045, (310) 337-1377

A1 Key Plan
N.T.S.

4/8/2012



FKP Architects

ARCHITECT OF RECORD

CONSULTANT

T M A D
TAYLOR
& GAINES

- STRUCTURAL
- MECHANICAL
- ELECTRICAL
- CIVIL

100 South Anaheim Boulevard, Suite 150
Anaheim, California 92805
Phone: 714.490.5555 Fax: 714.490.5560
Project No. 2305-163-07

REVISIONS

22A	11/22/10	CHANGE ORDER #29
59A	02/02/12	CHANGE ORDER #300

APPROVAL

PROJECT NAME

CHILDREN'S HOSPITAL
OF ORANGE COUNTY
455 S. Main St.
Orange, CA 92868-3874

TOWER II



PROJECT NUMBER

12011.00
Increment #7

OSHPD - PROJECT NUMBER
IL 072072-30

ISSUE

OSHPD PERMIT

DATE

01/27/2010

SCALE

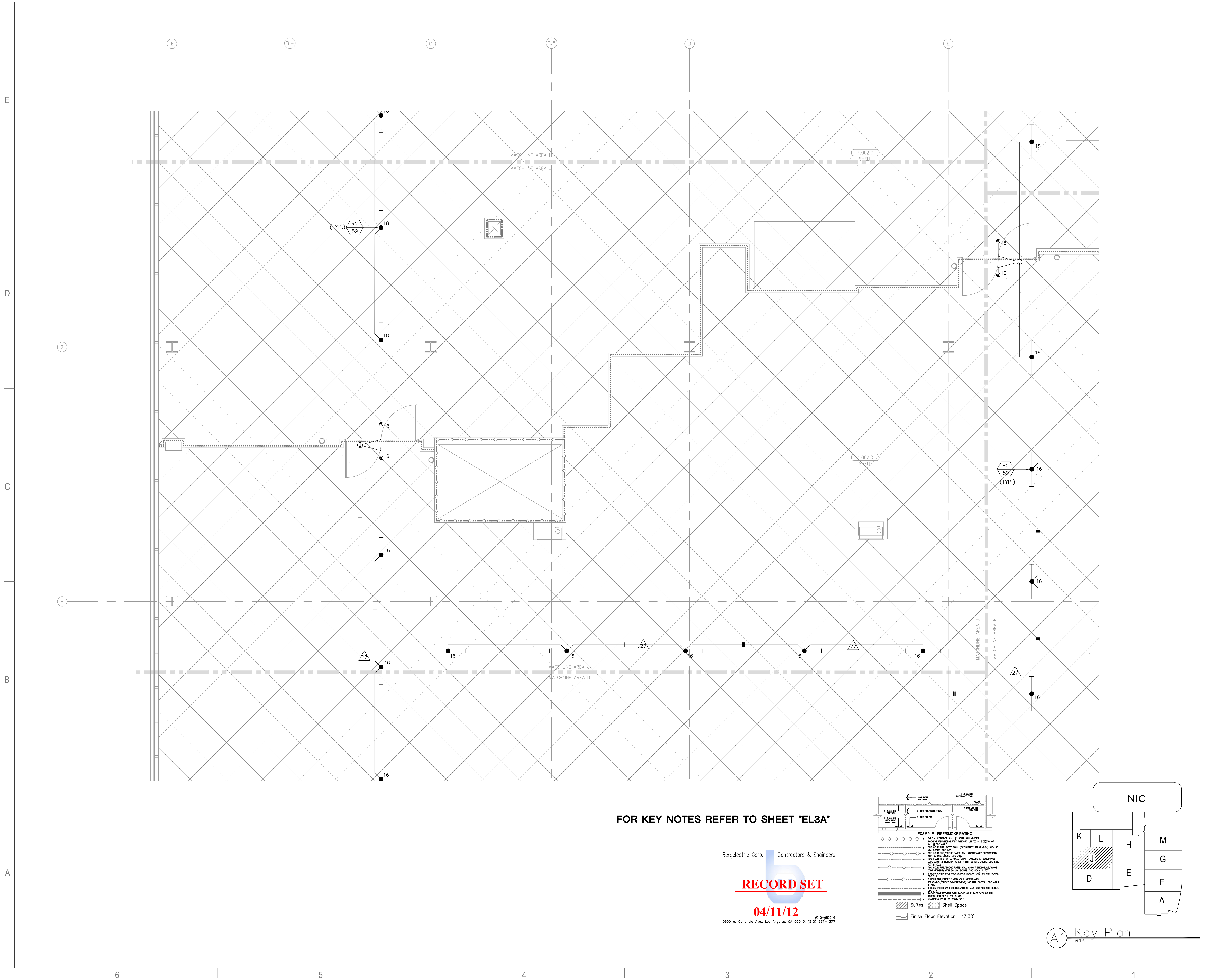
1/4" = 1' - 0"

DRAWING TITLE

LEVEL 4 LIGHTING PLAN
AREA - J

DRAWING NUMBER

EL3.4J



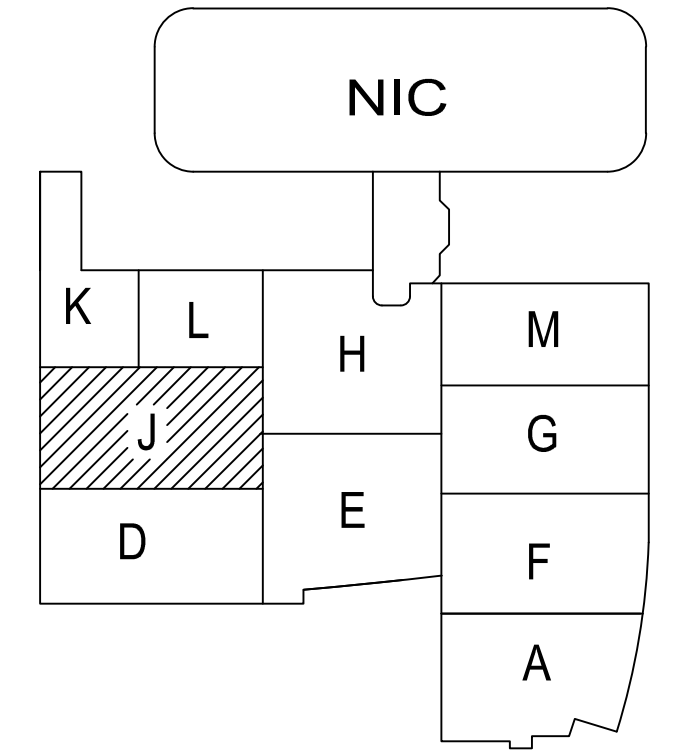
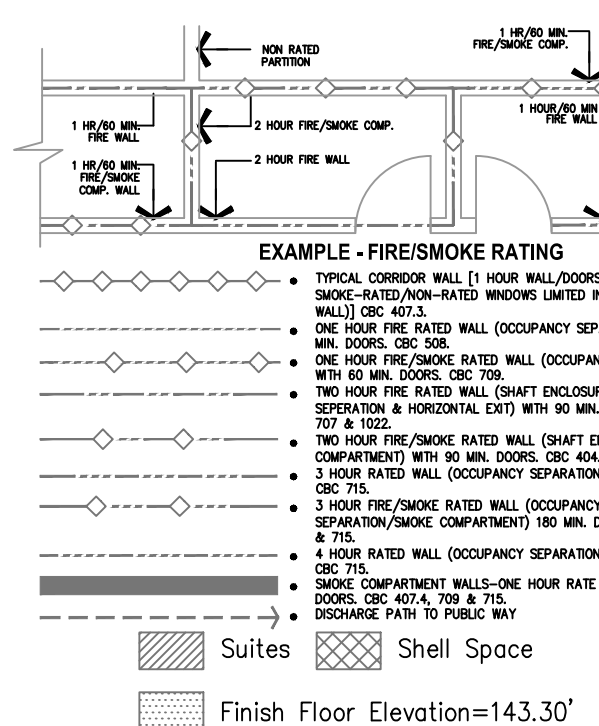
FOR KEY NOTES REFER TO SHEET "EL3A"

Bergelectric Corp. Contractors & Engineers

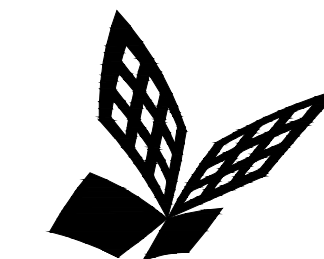
RECORD SET

04/11/12

5650 W. Centinela Ave., Los Angeles, CA 90045, (310) 337-1377



F:\Projects\12011\00\12011.00_07\004 - Level 4 Lighting Plan.dwg
 4/9/2012 11:12 AM



FKP Architects

ARCHITECT OF RECORD

CONSULTANT

T M A D
TAYLOR
& GAINES

- STRUCTURAL
- MECHANICAL
- ELECTRICAL
- CIVIL

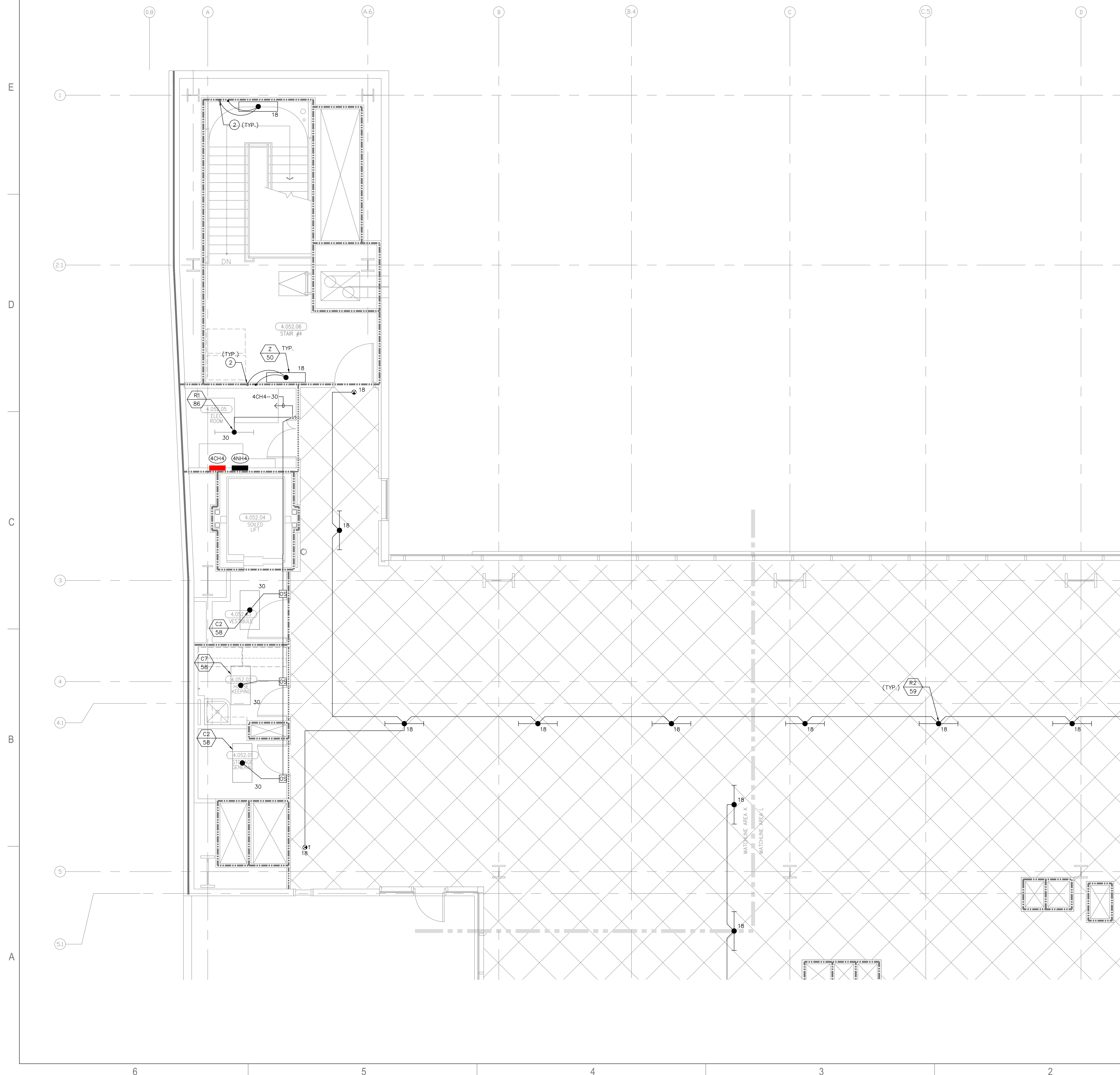
100 South Anaheim Boulevard, Suite 150
Anaheim, California 92805
Phone: 714.490.5555 Fax: 714.490.5560
Project No. 2305-163-07

REVISIONS

A 02/02/12 CHANGE ORDER #300

APPROVAL

FOR KEY NOTES REFER TO SHEET "EL3A"

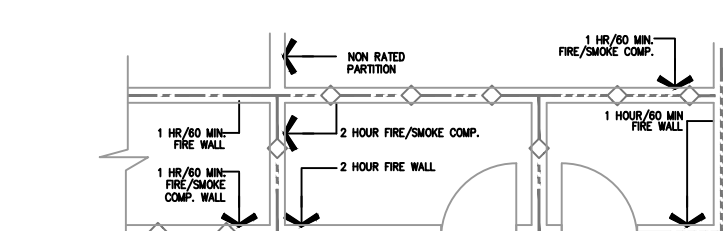


Bergelectric Corp. Contractors & Engineers

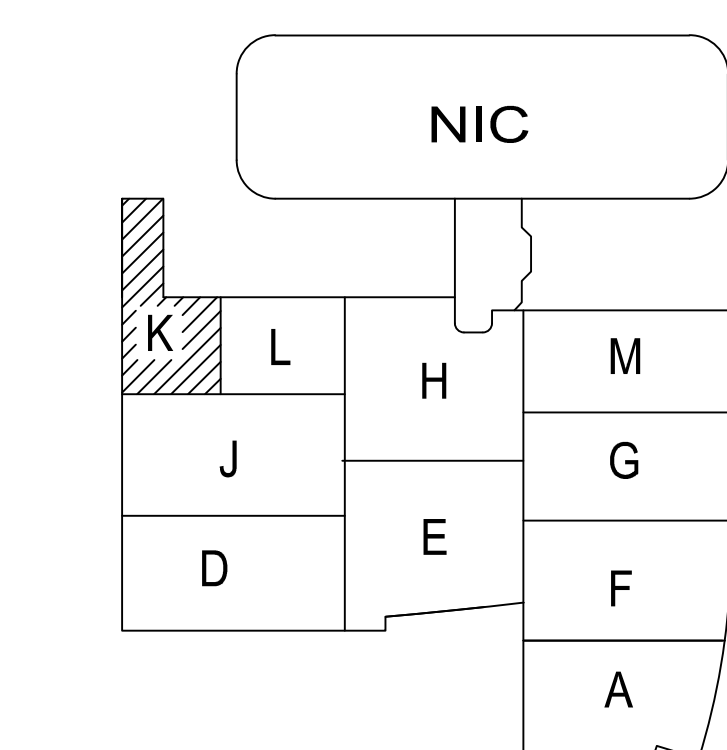
RECORD SET

04/11/12

5650 W. Centinela Ave., Los Angeles, CA 90045, (310) 537-1377



- EXAMPLE - FIRE/SMOKE RATING**
- TYPICAL CORRIDOR WALL (1) WITH WALL/DOOR
 - TYPICAL CORRIDOR WALL (2) WITH WALL/DOOR
 - TYPICAL CORRIDOR WALL (3) WITH WALL/DOOR
 - TYPICAL CORRIDOR WALL (4) WITH WALL/DOOR
 - TYPICAL CORRIDOR WALL (5) WITH WALL/DOOR
 - TYPICAL CORRIDOR WALL (6) WITH WALL/DOOR
 - TYPICAL CORRIDOR WALL (7) WITH WALL/DOOR
 - TYPICAL CORRIDOR WALL (8) WITH WALL/DOOR
 - TYPICAL CORRIDOR WALL (9) WITH WALL/DOOR
 - TYPICAL CORRIDOR WALL (10) WITH WALL/DOOR
 - TYPICAL CORRIDOR WALL (11) WITH WALL/DOOR
 - TYPICAL CORRIDOR WALL (12) WITH WALL/DOOR
 - TYPICAL CORRIDOR WALL (13) WITH WALL/DOOR
 - TYPICAL CORRIDOR WALL (14) WITH WALL/DOOR
 - TYPICAL CORRIDOR WALL (15) WITH WALL/DOOR
 - TYPICAL CORRIDOR WALL (16) WITH WALL/DOOR
 - TYPICAL CORRIDOR WALL (17) WITH WALL/DOOR
 - TYPICAL CORRIDOR WALL (18) WITH WALL/DOOR
 - TYPICAL CORRIDOR WALL (19) WITH WALL/DOOR
 - TYPICAL CORRIDOR WALL (20) WITH WALL/DOOR
- Legend:
 [Hatched] Suites
 [Cross-hatched] Shell Space
 [Dotted] Finish Floor Elevation=143.30'



A1 Key Plan
N.T.S.

PROJECT NAME
**CHILDREN'S HOSPITAL
OF ORANGE COUNTY**
455 S. Main St.
Orange, CA 92868-3874



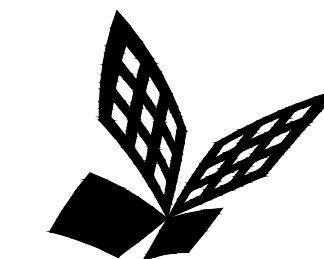
PROJECT NUMBER
**12011.00
Increment #7**
OSHPD - PROJECT NUMBER
IL 072072-30

ISSUE
OSHPD PERMIT
DATE
01/27/2010

SCALE
1/4" = 1' - 0"
DRAWING TITLE
**LEVEL 4 LIGHTING PLAN
AREA - K**

DRAWING NUMBER
EL3.4K

F:\Projects\12011.00\12011.00-07\12011.00-07-07.dwg
 4/6/2012
 NE



FKP Architects

ARCHITECT OF RECORD

CONSULTANT

T M A D
TAYLOR
& GAINES

• STRUCTURAL
• MECHANICAL
• ELECTRICAL
• CIVIL

100 South Anaheim Boulevard, Suite 150
Anaheim, California 92805
Phone: 714.490.5555 Fax: 714.490.5560
Project No. 2305-163-07

REVISIONS

A 02/02/12 CHANGE ORDER #300

APPROVAL

PROJECT NAME

CHILDREN'S HOSPITAL
OF ORANGE COUNTY

455 S. Main St.
Orange, CA 92868-3874

TOWER II



PROJECT NUMBER

12011.00
Increment #7

OSHPD - PROJECT NUMBER
IL 072072-30

ISSUE

OSHPD PERMIT

DATE

01/27/2010

SCALE

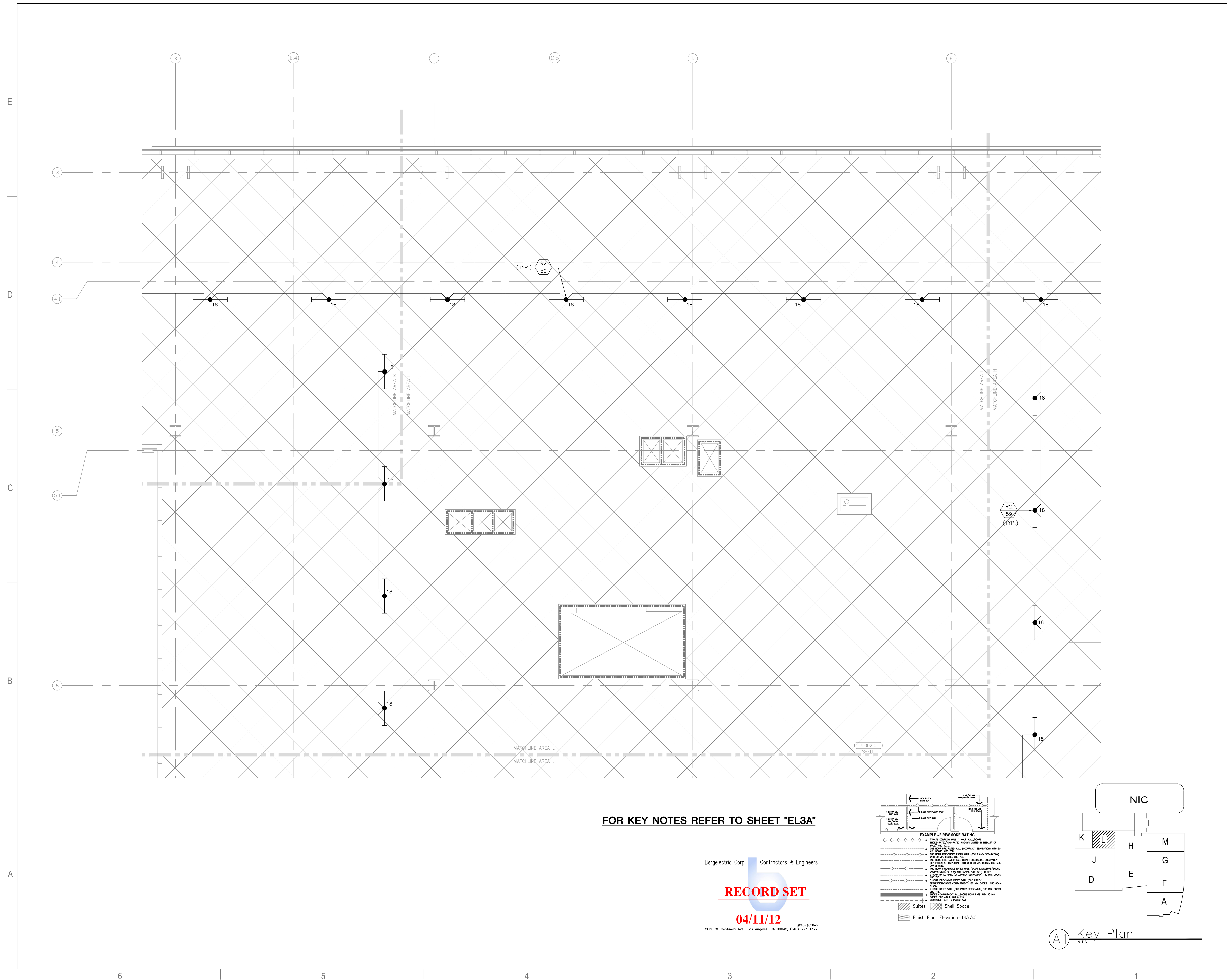
1/4" = 1' - 0"

DRAWING TITLE

LEVEL 4 LIGHTING PLAN
AREA - L

DRAWING NUMBER

EL3.4L



Bergelectric Corp. Contractors & Engineers

RECORD SET

04/11/12

6550 W. Centinela Ave., Los Angeles, CA 90045, (310) 537-1377

F:\Projects\12011.00\12011.00-000000.dwg, 4/6/2012 4:16:20 PM, NE

