

FKP Architects

ARCHITECT OF RECORD

CONSULTANT  
T M A D  
TAYLOR  
& G AINES  
100 South Anaheim Boulevard, Suite 150  
Anaheim, California 92805  
Phone: 714.490.5555 Fax: 714.490.5560  
Project No. 2305-163-07

REVISIONS

APPROVAL

PROJECT NAME  
CHILDREN'S HOSPITAL  
OF ORANGE COUNTY  
455 S. Main St.  
Orange, CA 92868-3874

TOWER II  
CHOC  
HOSPITAL

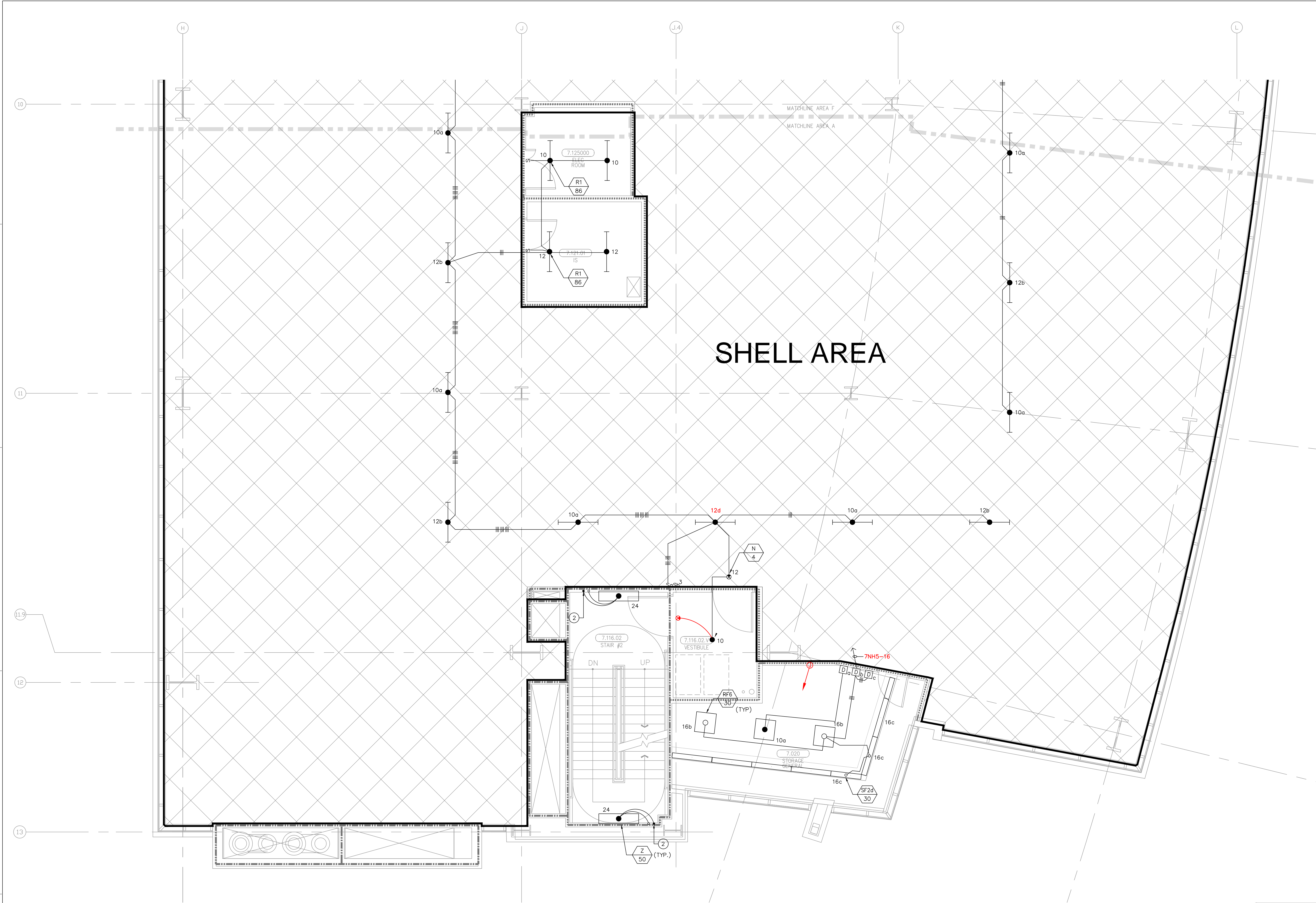
PROJECT NUMBER  
12011.00  
Increment #7  
OSHPD - PROJECT NUMBER  
IL 072072-30

ISSUE  
OSHPD PERMIT  
DATE  
01/27/2010  
SCALE

1/4" = 1' - 0"  
DRAWING TITLE  
LEVEL 7 LIGHTING PLAN  
AREA - A

DRAWING NUMBER

EL3.7A



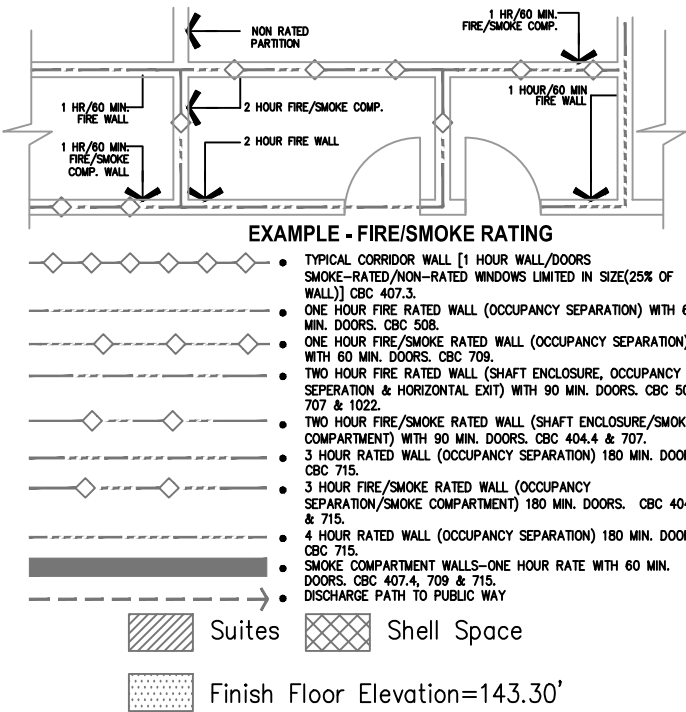
FOR KEY NOTES REFER TO SHEET "EL3A"

Bergelectric Corp. Contractors & Engineers

RECORD SET

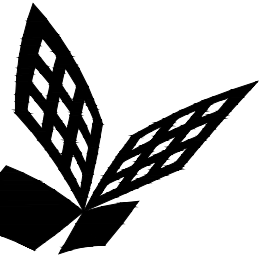
08/17/12

5850 W. Centinela Ave., Los Angeles, CA 90045, (310) 337-1377



(A1) Key Plan  
N.T.S.





FKP Architects

ARCHITECT OF RECORD

CONSULTANT  
T M A D  
TAYLOR  
& G AINES  
100 South Anaheim Boulevard, Suite 150  
Anaheim, California 92805  
Phone: 714.490.5555 Fax: 714.490.5560  
Project No. 2305-163-07

REVISIONS

APPROVAL

PROJECT NAME  
CHILDREN'S HOSPITAL  
OF ORANGE COUNTY  
455 S. Main St.  
Orange, CA 92868-3874

TOWER II



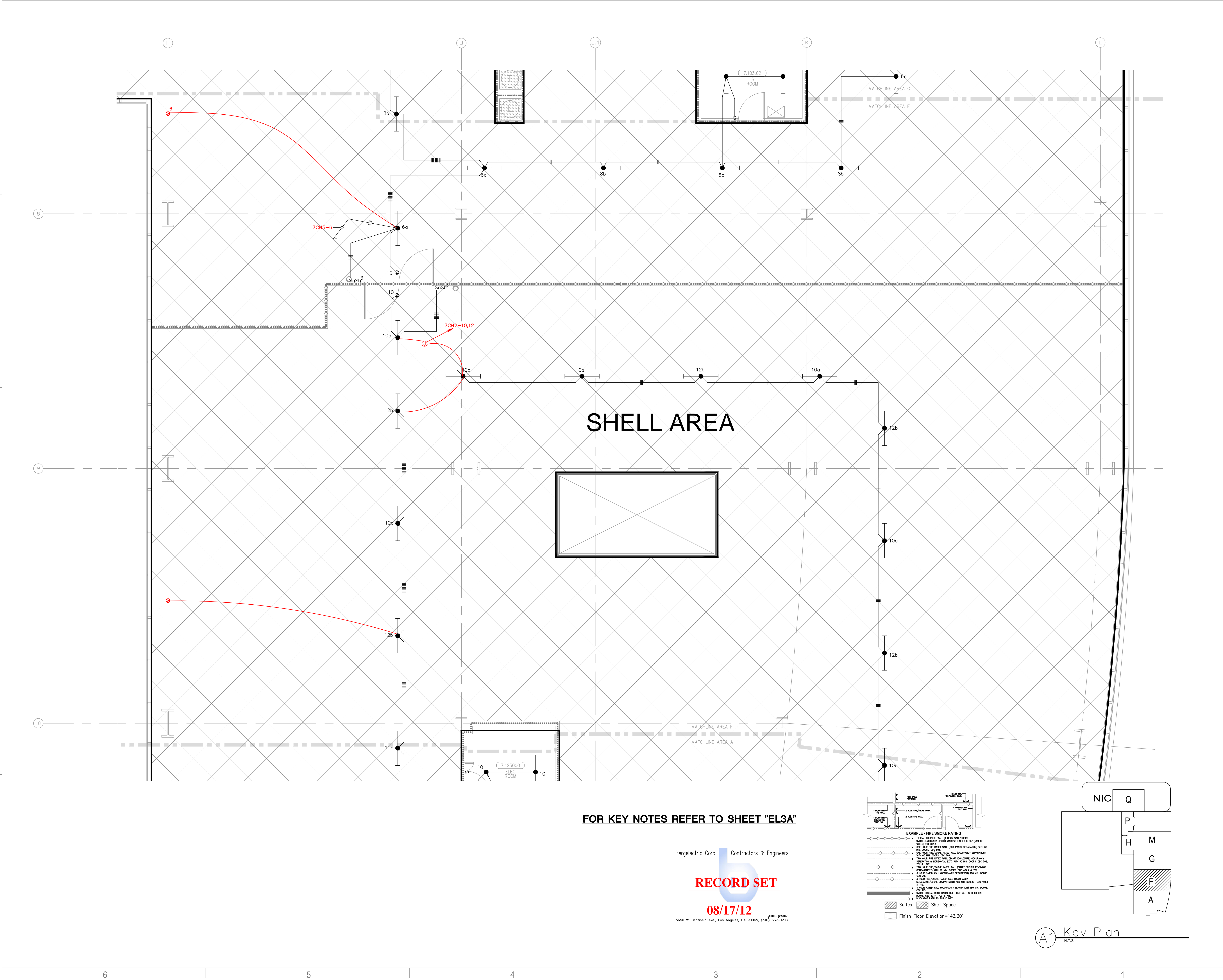
PROJECT NUMBER  
12011.00  
Increment #7  
OSHPD - PROJECT NUMBER  
IL 072072-30

ISSUE  
OSHPD PERMIT  
DATE  
01/27/2010  
SCALE

1/4" = 1' - 0"  
DRAWING TITLE  
LEVEL 7 LIGHTING PLAN  
AREA - F

DRAWING NUMBER

EL3.7F



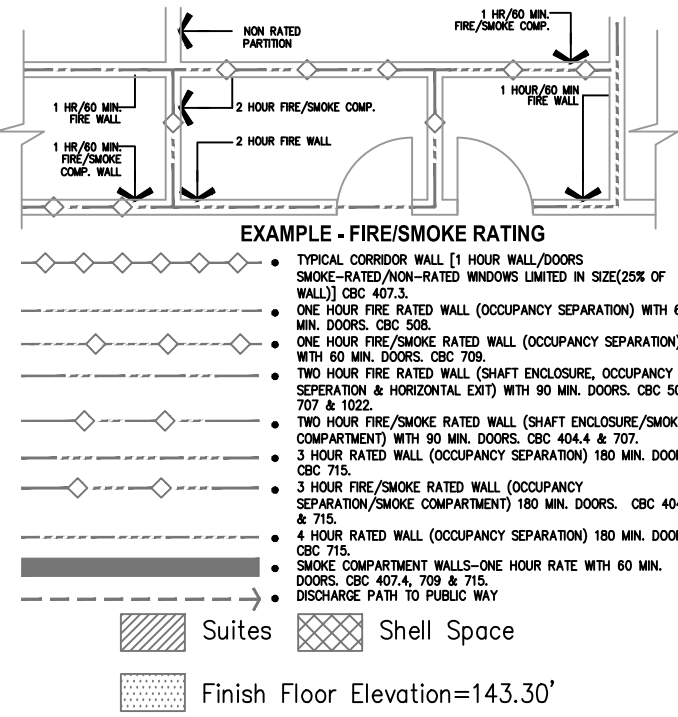
FOR KEY NOTES REFER TO SHEET "EL3A"

Bergelectric Corp. Contractors & Engineers

RECORD SET

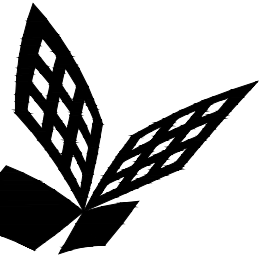
08/17/12

5650 W. Centinela Ave., Los Angeles, CA 90045, (310) 337-1377



A1 Key Plan  
N.T.S.





FKP Architects

ARCHITECT OF RECORD

CONSULTANT  
T M A D  
TAYLOR  
& G AINES  
100 South Anaheim Boulevard, Suite 150  
Anaheim, California 92805  
Phone: 714.490.5555 Fax: 714.490.5560  
Project No. 2305-163-07

REVISIONS

APPROVAL

PROJECT NAME  
CHILDREN'S HOSPITAL  
OF ORANGE COUNTY  
455 S. Main St.  
Orange, CA 92868-3874

TOWER II



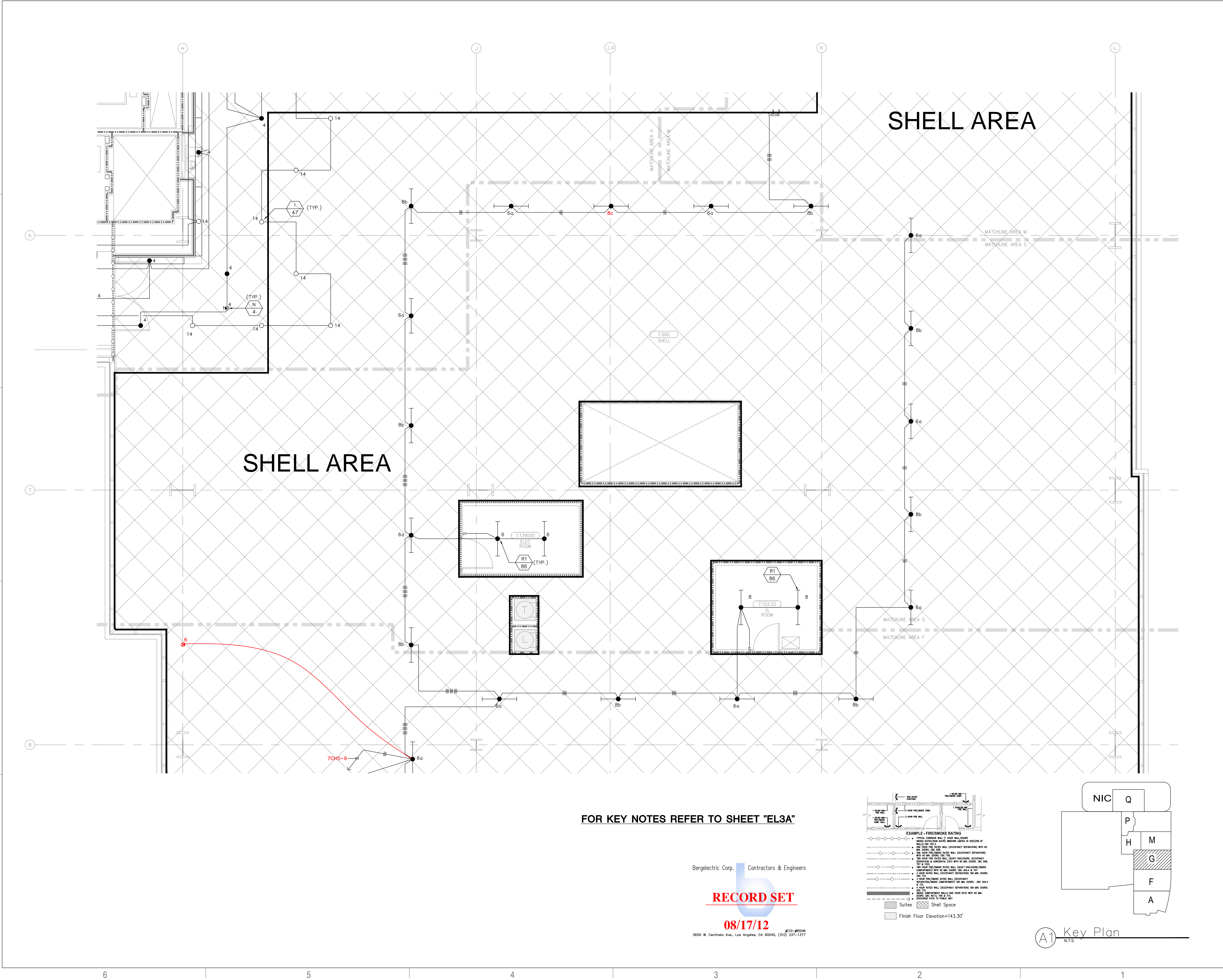
PROJECT NUMBER  
12011.00  
Increment #7  
OSHPD - PROJECT NUMBER  
IL 072072-30

ISSUE  
OSHPD PERMIT  
DATE  
01/27/2010  
SCALE

1/4" = 1' - 0"  
DRAWING TITLE  
LEVEL 7 LIGHTING PLAN  
AREA - G

DRAWING NUMBER

EL3.7G



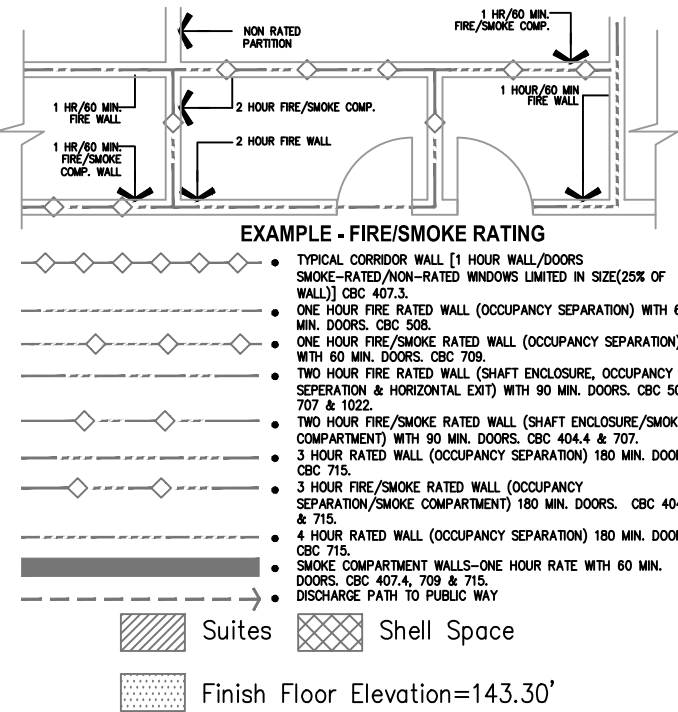
FOR KEY NOTES REFER TO SHEET "EL3A"

Bergelectric Corp. Contractors & Engineers

RECORD SET

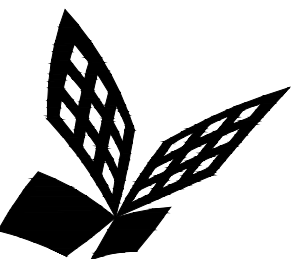
08/17/12

6500 W. Centinela Ave., Los Angeles, CA 90045, (310) 337-1377



A1 Key Plan  
N.T.S.





FKP Architects

ARCHITECT OF RECORD

CONSULTANT

**T M A D**  
**TAYLOR**  
**& G AINES**

- STRUCTURAL
- MECHANICAL
- ELECTRICAL
- CIVIL

100 South Anaheim Boulevard, Suite 150  
Anaheim, California 92805  
Phone: 714.490.5555 Fax: 714.490.5560  
Project No. 2305-163-07

REVISIONS

**27** 11/22/10 CHANGE ORDER #29

APPROVAL

Bergelectric Corp. Contractors & Engineers

**RECORD SET**

**08/17/12**

5650 W. Centinela Ave., Los Angeles, CA 90045, (310) 337-1377

PROJECT NAME

**CHILDREN'S HOSPITAL  
OF ORANGE COUNTY**  
455 S. Main St.  
Orange, CA 92668-3874

TOWER II



PROJECT NUMBER

**12011.00  
Increment #7**

OSHPD - PROJECT NUMBER  
**IL 072072-30**

ISSUE

OSHPD PERMIT

DATE

**01/27/2010**

SCALE

**1/4" = 1' - 0"**

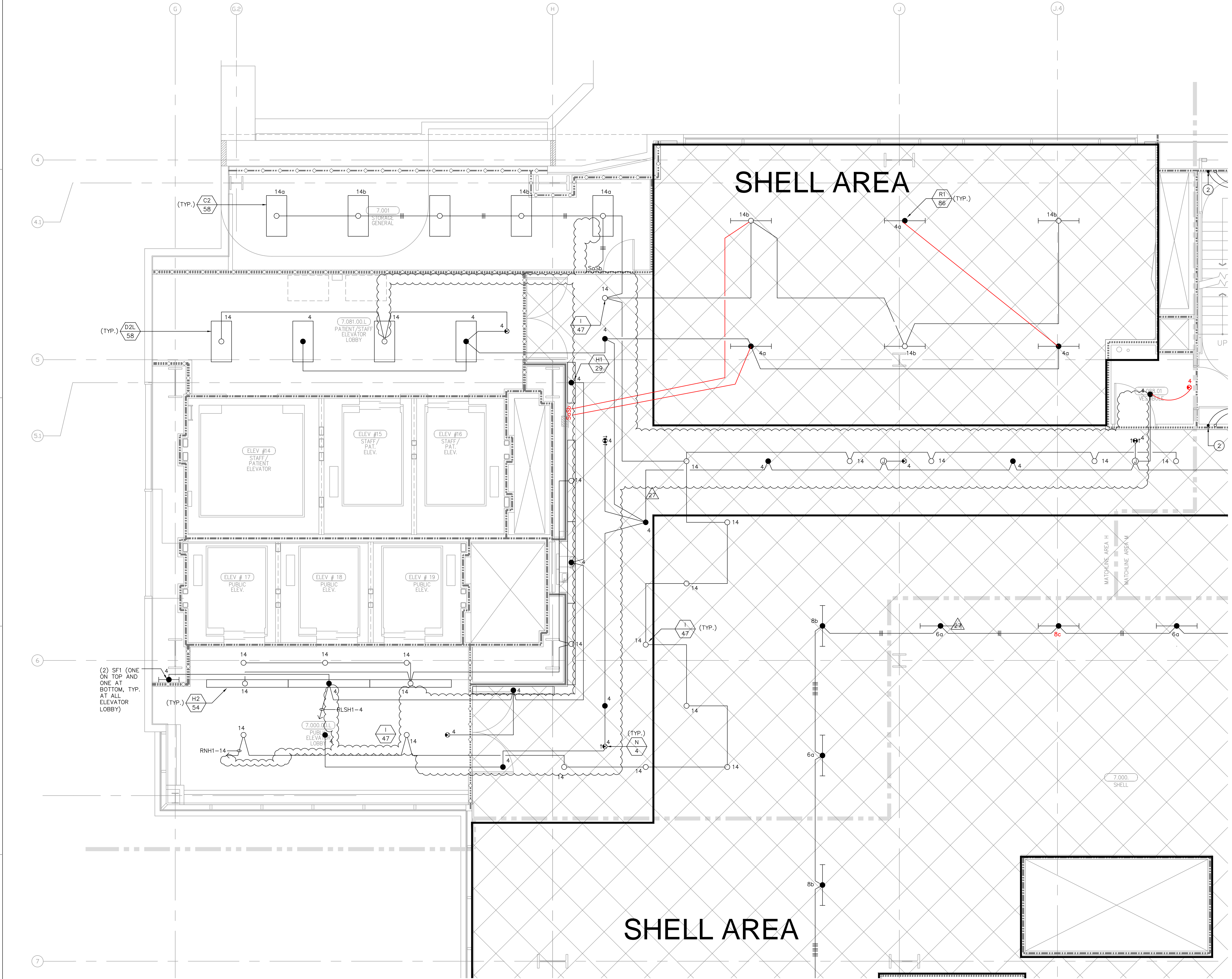
DRAWING TITLE

**LEVEL 7 LIGHTING PLAN  
AREA - H**

DRAWING NUMBER

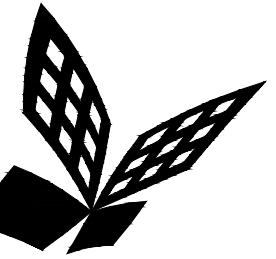
**EL3.7H**

FOR KEY NOTES REFER TO SHEET "EL3A"



**A1** Key Plan  
N.T.S.





FKP Architects

ARCHITECT OF RECORD

CONSULTANT

**T M A D**  
**TAYLOR**  
**& G AINES**

- STRUCTURAL
- MECHANICAL
- ELECTRICAL
- CIVIL

100 South Anaheim Boulevard, Suite 150  
Anaheim, California 92805  
Phone: 714.490.5555 Fax: 714.490.5560  
Project No. 2305-163-07

REVISIONS

**27** 11/22/10 CHANGE ORDER #29

APPROVAL

PROJECT NAME

**CHILDREN'S HOSPITAL  
OF ORANGE COUNTY**  
455 S. Main St.  
Orange, CA 92868-3874

TOWER II



PROJECT NUMBER

**12011.00  
Increment #7**

OSHPD - PROJECT NUMBER  
**IL 072072-30**

ISSUE

**OSHPD PERMIT**

DATE

**01/27/2010**

SCALE

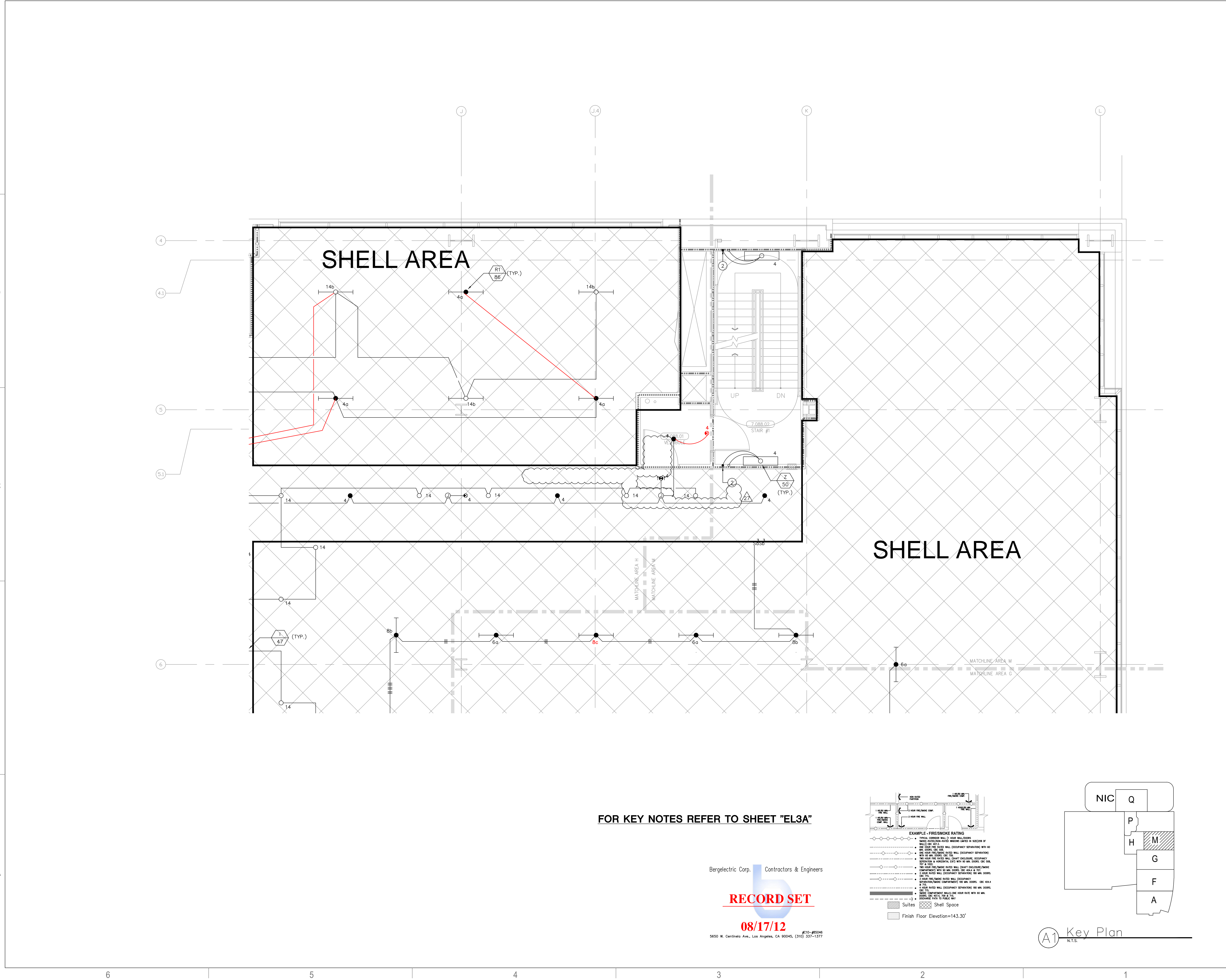
**1/4" = 1' - 0"**

DRAWING TITLE

**LEVEL 7 LIGHTING PLAN  
AREA - M**

DRAWING NUMBER

**EL3.7M**



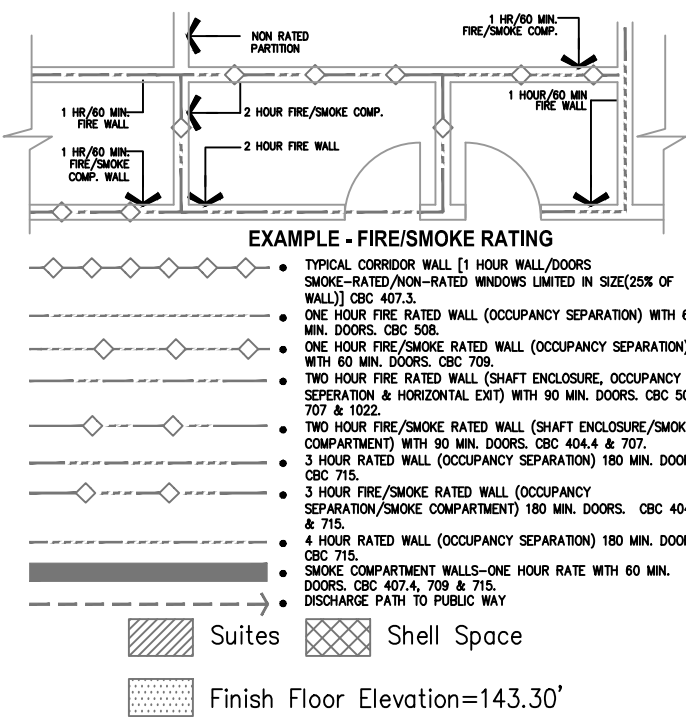
FOR KEY NOTES REFER TO SHEET "EL3A"

Bergelectric Corp. Contractors & Engineers

**RECORD SET**

**08/17/12**

5550 W. Centinela Ave., Los Angeles, CA 90045, (310) 337-1377



**A1** Key Plan  
N.T.S.