

ARCHITECT OF RECORD

CONSULTANT

T M A D
TAYLOR
& GAINES

- STRUCTURAL
- MECHANICAL
- ELECTRICAL
- CIVIL

100 South Anaheim Boulevard, Suite 150
Anaheim, California 92805
Phone: 714.490.5555 Fax: 714.490.5560
Project No. 2305-163-07

REVISIONS

APPROVAL

PROJECT NAME _____

CHILDREN'S HOSPITAL
OF ORANGE COUNTY
455 S. Main St.
Orange, CA 92668-3874

TOWER II



PROJECT NUMBER _____

12011.00
Increment #7

OSHPD - PROJECT NUMBER
IL 072072-30

ISSUE

OSHDPD PERMIT

DATE _____

01/27/2010

SCALE

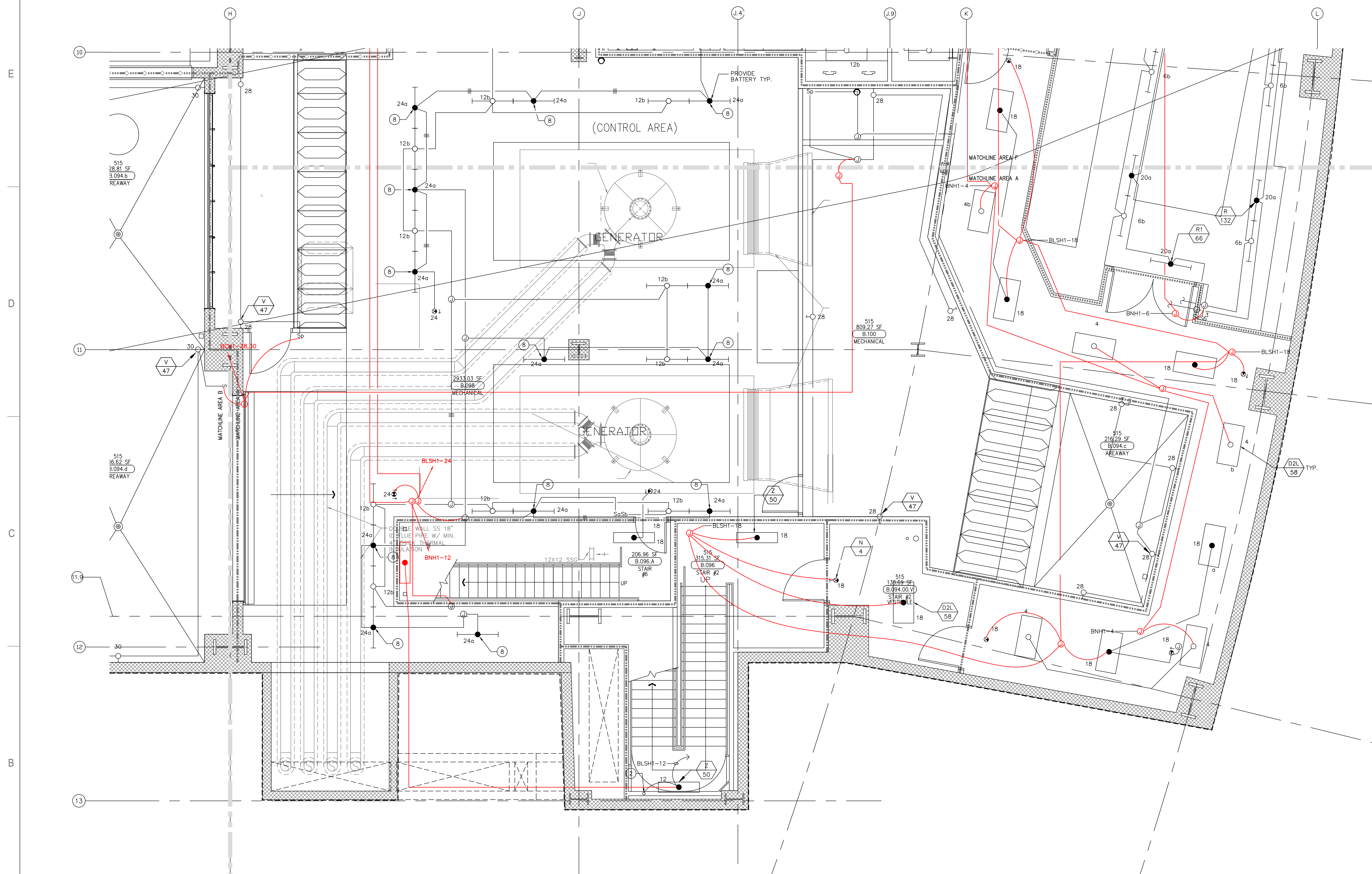
1/4"-1' 0"

DRAWING TITLE

LOWER LEVEL LIGHTING
PLAN AREA - A

DRAWING NUMBER

EL3.0A

[illegible]

	S	NIC	
	R		
K	L	P	N
J	H	M	
D	E	G	
C	B	F	
		A	

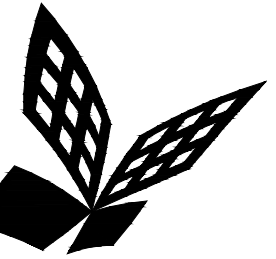
A1 Key Plan
N.T.S.

Bergelectric Corp. Contractors & Engineers

RECORD SET

08/17/12

5650 W. Centinela Ave., Los Angeles, CA 90045, (310) 337-1377



FKP Architects

ARCHITECT OF RECORD

CONSULTANT

T M A D
TAYLOR
& G AINES

- STRUCTURAL
- MECHANICAL
- ELECTRICAL
- CIVIL

100 South Anaheim Boulevard, Suite 150
Anaheim, California 92805
Phone: 714.490.5555 Fax: 714.490.5560
Project No. 2305-163-07

REVISIONS

APPROVAL

PROJECT NAME

**CHILDREN'S HOSPITAL
OF ORANGE COUNTY**
455 S. Main St.
Orange, CA 92868-3874

TOWER II



PROJECT NUMBER

**12011.00
Increment #7**

OSHPD - PROJECT NUMBER
IL 072072-30

ISSUE

OSHPD PERMIT

DATE

01/27/2010

SCALE

1/4"=1'- 0"

DRAWING TITLE

**LOWER LEVEL LIGHTING
PLAN AREA - B**

DRAWING NUMBER

EL3.0B

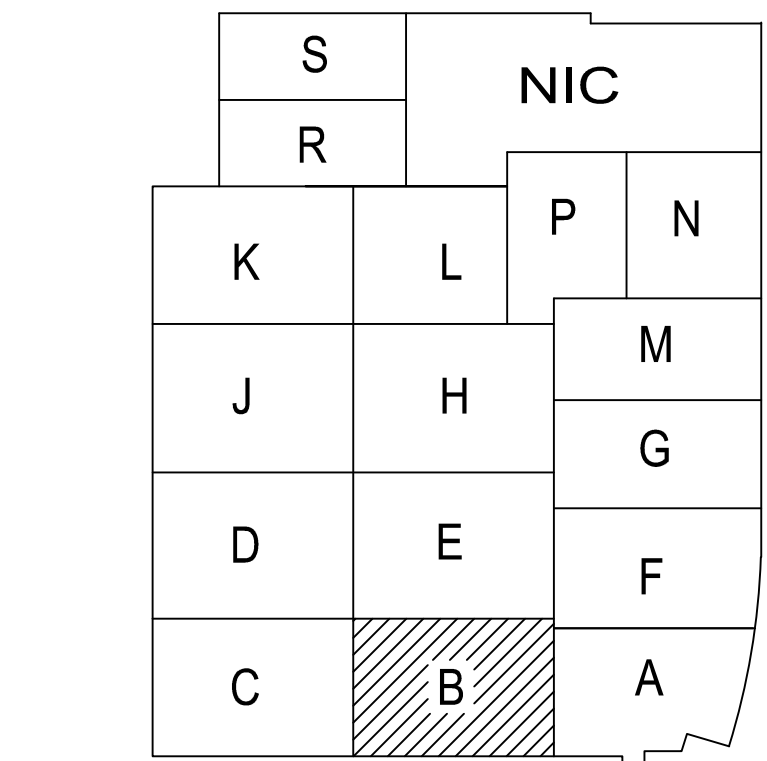
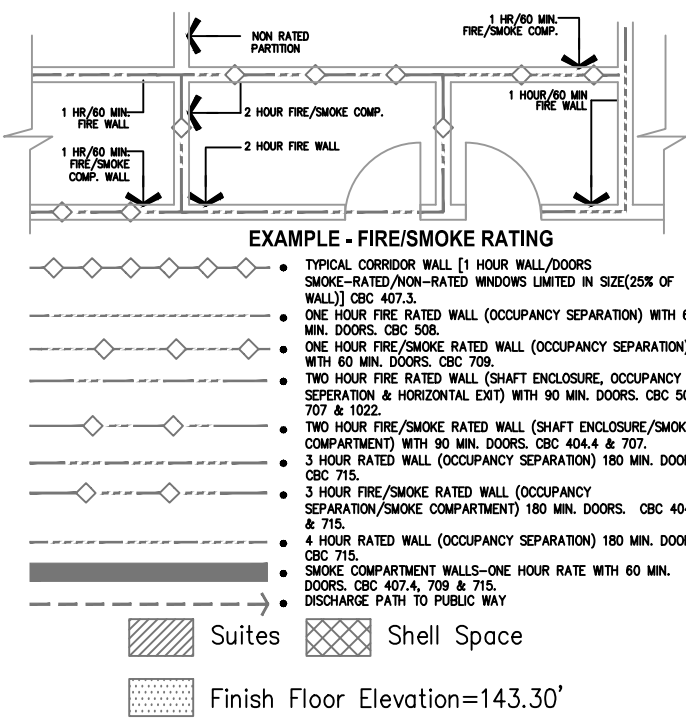
FOR KEY NOTES REFER TO SHEET "EL3A"

Bergelectric Corp. Contractors & Engineers

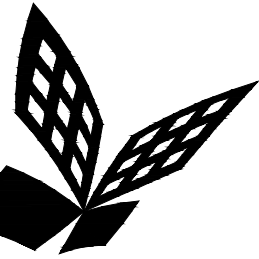
RECORD SET

08/17/12

#C10-#05046
5650 W. Centinela Ave., Los Angeles, CA 90045, (310) 337-1377



A1 Key Plan
N.T.S.



FKP Architects

ARCHITECT OF RECORD

CONSULTANT

T M A D
TAYLOR
& G AINES

- STRUCTURAL
- MECHANICAL
- ELECTRICAL
- CIVIL

100 South Anaheim Boulevard, Suite 150
Anaheim, California 92805
Phone: 714.490.5555 Fax: 714.490.5560
Project No. 2305-163-07

REVISIONS

APPROVAL

PROJECT NAME
**CHILDREN'S HOSPITAL
OF ORANGE COUNTY**
455 S. Main St.
Orange, CA 92868-3874

TOWER II



PROJECT NUMBER

**12011.00
Increment #7**

OSHPD - PROJECT NUMBER
IL 072072-30

ISSUE

OSHPD PERMIT

DATE

01/27/2010

SCALE

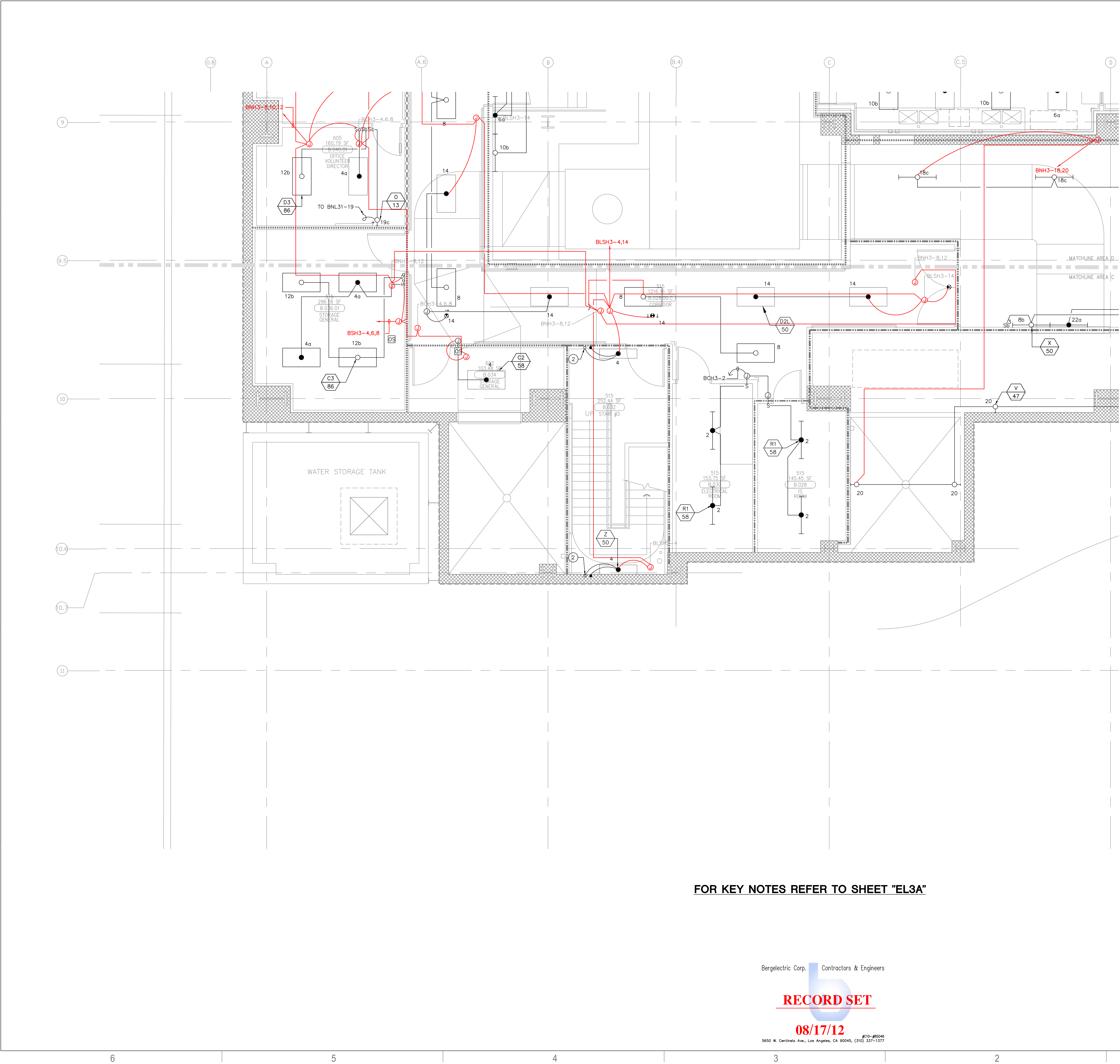
1/4"=1'-0"

DRAWING TITLE

**LOWER LEVEL LIGHTING
PLAN AREA - C**

DRAWING NUMBER

EL3.0C



FOR KEY NOTES REFER TO SHEET "EL3A"

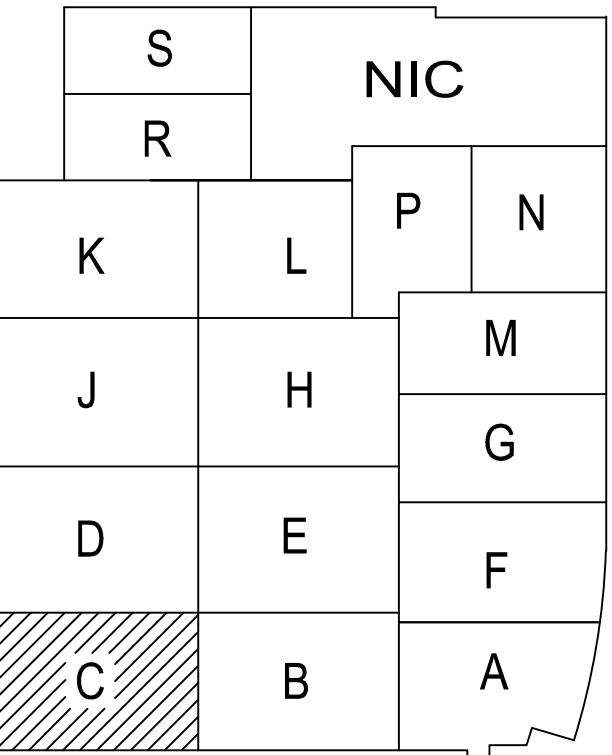
Bergelectric Corp. Contractors & Engineers

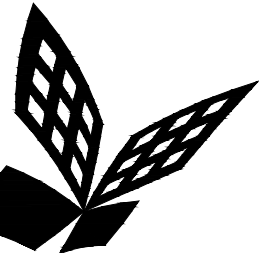
RECORD SET

08/17/12

#C10-#5006
5650 W. Centinela Ave., Los Angeles, CA 90045, (310) 337-1377

A1 Key Plan
N.T.S.





FKP Architects

ARCHITECT OF RECORD

CONSULTANT

T M A D
TAYLOR
& GAINES
100 South Anaheim Boulevard, Suite 150
Anaheim, California 92805
Phone: 714.490.5555 Fax: 714.490.5560
Project No. 2305-163-07

REVISIONS

12/19/11 CHANGE ORDER #294

APPROVAL

PROJECT NAME

CHILDREN'S HOSPITAL
OF ORANGE COUNTY
455 S. Main St.
Orange, CA 92868-3874

TOWER II



PROJECT NUMBER

12011.00
Increment #7

OSHPD - PROJECT NUMBER
IL 072072-30

ISSUE

OSHPD PERMIT

DATE

01/27/2010

SCALE

1/4"=1'-0"

DRAWING TITLE

LOWER LEVEL LIGHTING
PLAN AREA - D

DRAWING NUMBER

EL3.0D

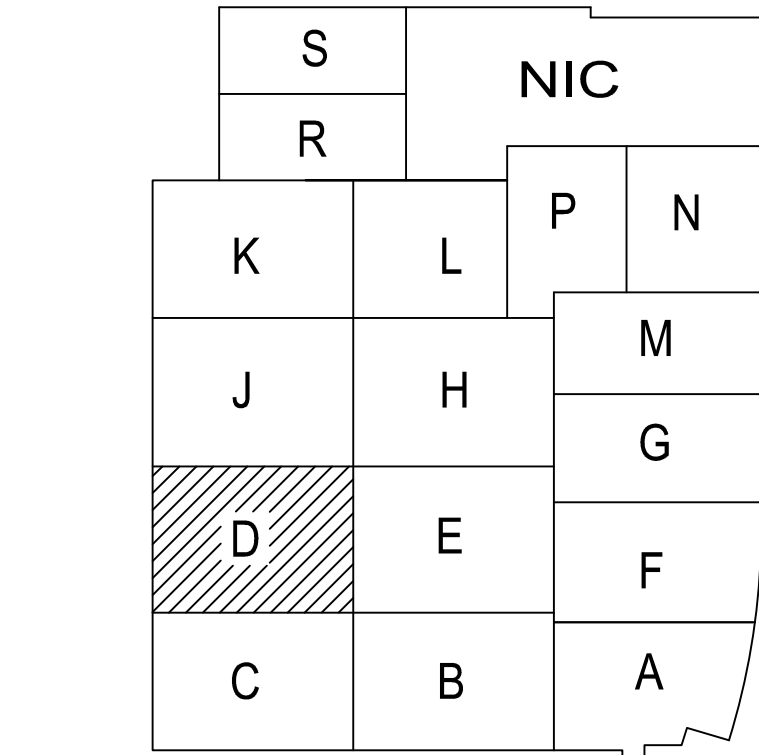
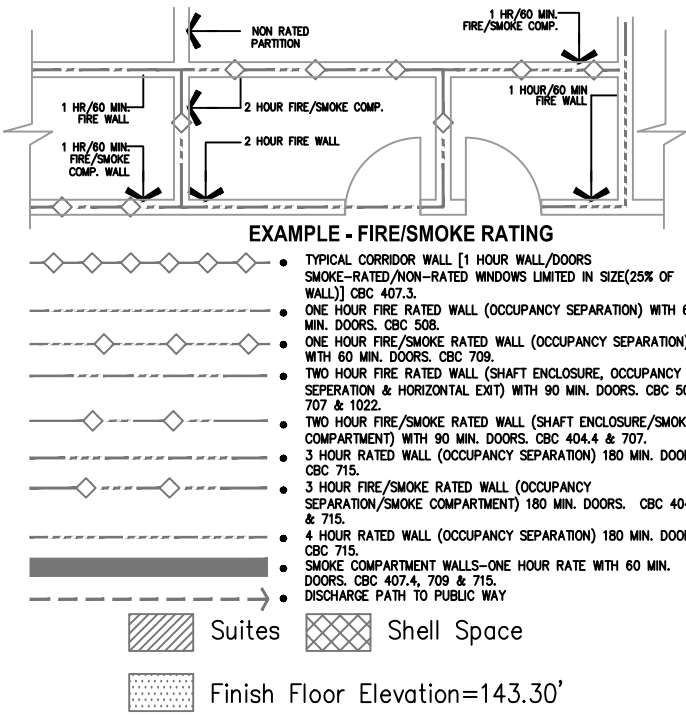
FOR KEY NOTES REFER TO SHEET "EL3A"

Bergelectric Corp. Contractors & Engineers

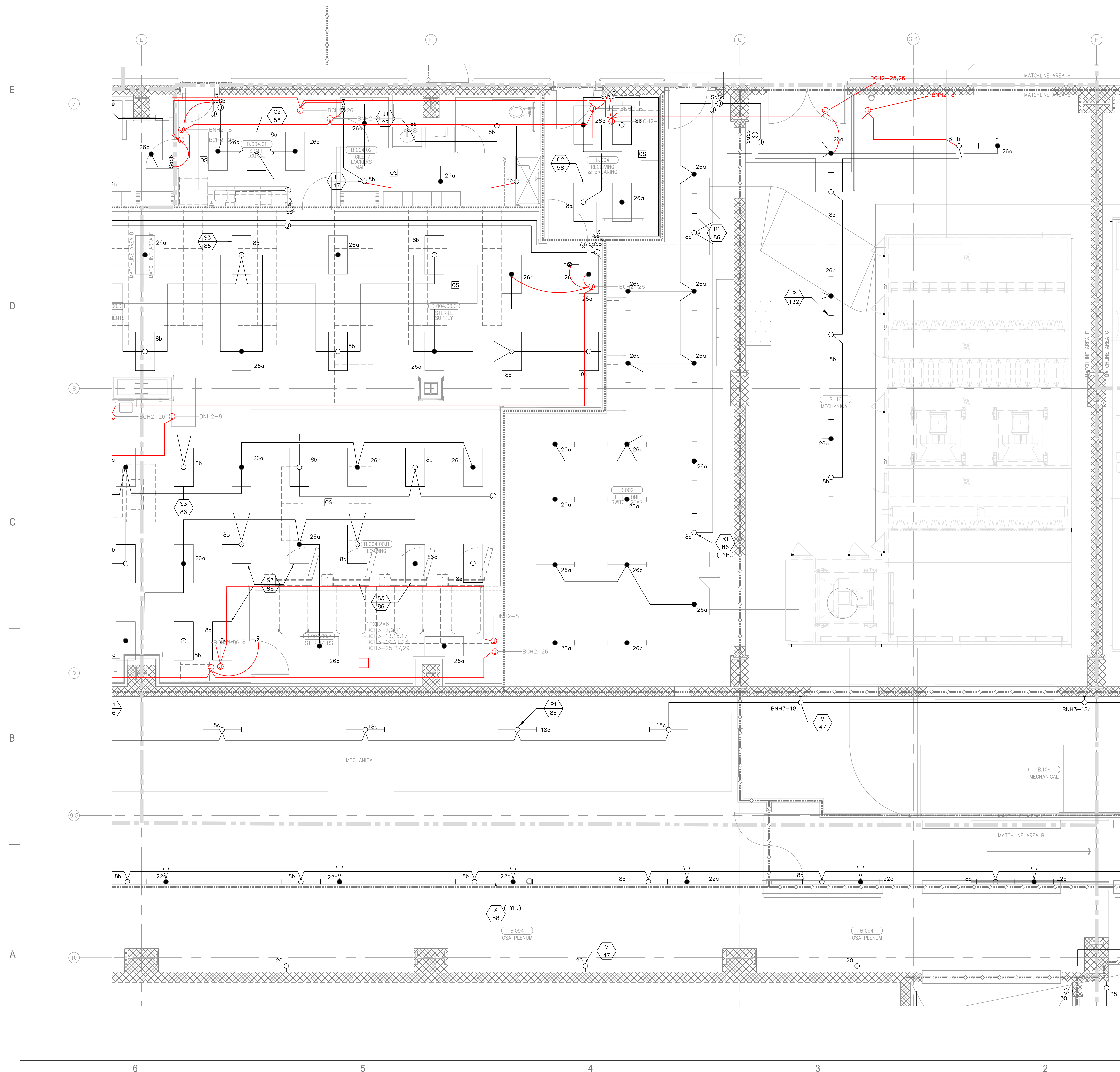
RECORD SET

08/17/12

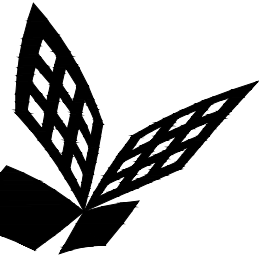
5650 W. Centinela Ave., Los Angeles, CA 90045, (310) 337-1377



A1 Key Plan
N.T.S.



A1 Key Plan
N.T.S.



FKP Architects

ARCHITECT OF RECORD

CONSULTANT

T M A D
TAYLOR
& G AINES

- STRUCTURAL
- MECHANICAL
- ELECTRICAL
- CIVIL

100 South Anaheim Boulevard, Suite 150
Anaheim, California 92805
Phone: 714.490.5555 Fax: 714.490.5560
Project No. 2305-163-07

REVISIONS

12/19/11 CHANGE ORDER #294

APPROVAL

PROJECT NAME

**CHILDREN'S HOSPITAL
OF ORANGE COUNTY**
455 S. Main St.
Orange, CA 92868-3874

TOWER II



PROJECT NUMBER

**12011.00
Increment #7**

OSHPD - PROJECT NUMBER
IL 072072-30

ISSUE

OSHPD PERMIT

DATE

01/27/2010

SCALE

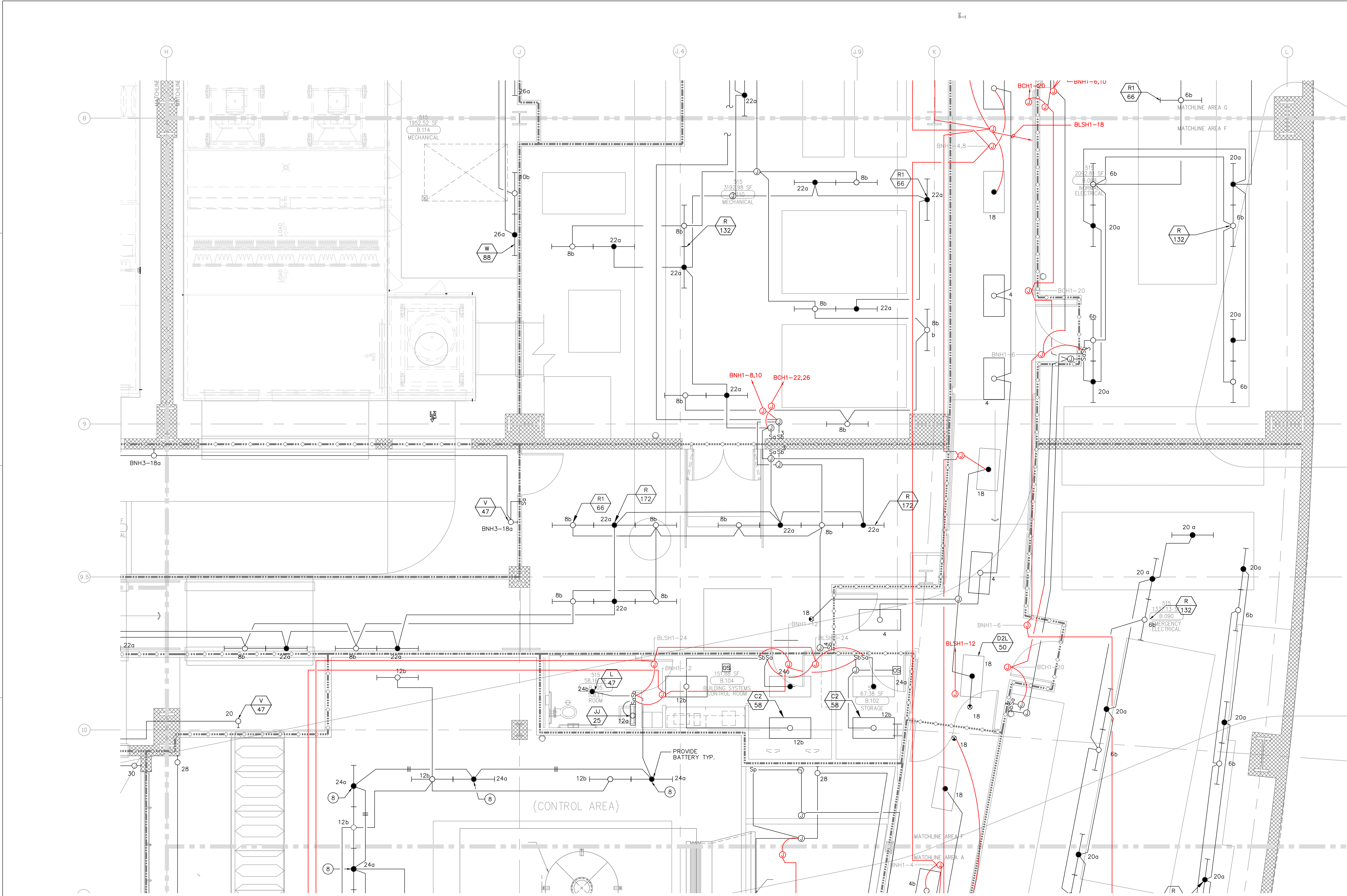
1/4"=1'-0"

DRAWING TITLE

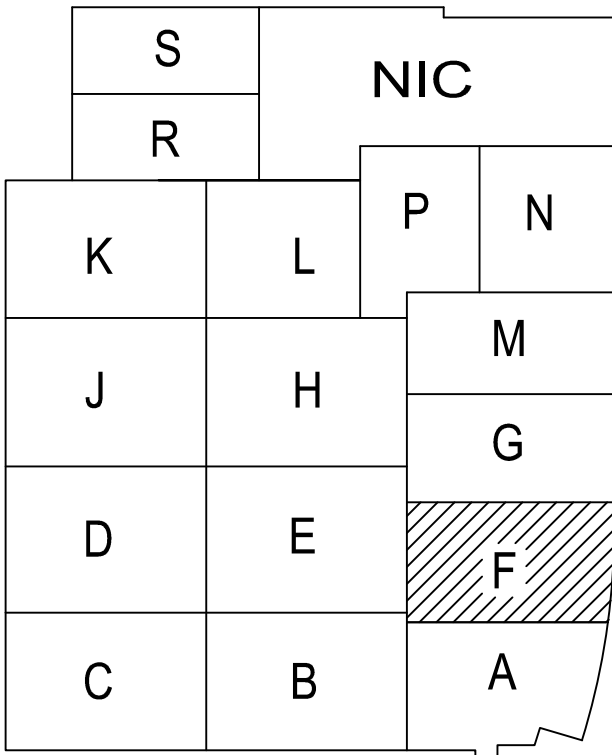
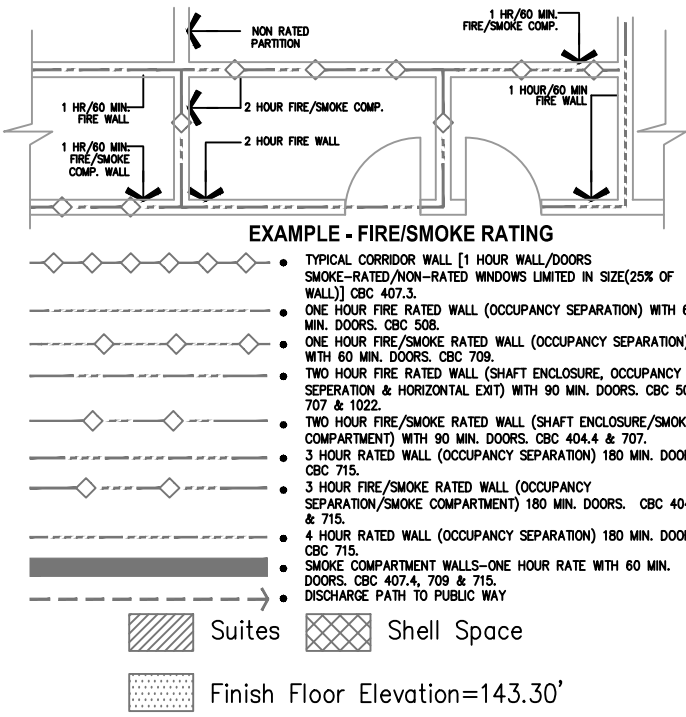
**LOWER LEVEL LIGHTING
PLAN AREA - F**

DRAWING NUMBER

EL3.0F



FOR KEY NOTES REFER TO SHEET "EL3A"



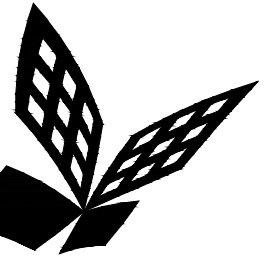
Bergelectric Corp. Contractors & Engineers

RECORD SET

08/17/12

5650 W. Centinela Ave., Los Angeles, CA 90045, (310) 337-1377

A1 Key Plan
N.T.S.



FKP Architects

ARCHITECT OF RECORD

CONSULTANT

T M A D
TAYLOR
& G AINES

- STRUCTURAL
- MECHANICAL
- ELECTRICAL
- CIVIL

100 South Anaheim Boulevard, Suite 150
Anaheim, California 92805
Phone: 714.490.5555 Fax: 714.490.5560
Project No. 2305-163-07

REVISIONS

12/19/11 CHANGE ORDER #294

APPROVAL

PROJECT NAME

**CHILDREN'S HOSPITAL
OF ORANGE COUNTY**
455 S. Main St.
Orange, CA 92668-3874

TOWER II



PROJECT NUMBER

**12011.00
Increment #7**

OSHPD - PROJECT NUMBER

IL 072072-30

ISSUE

OSHPD PERMIT

DATE

01/27/2010

SCALE

1/4"=1'- 0"

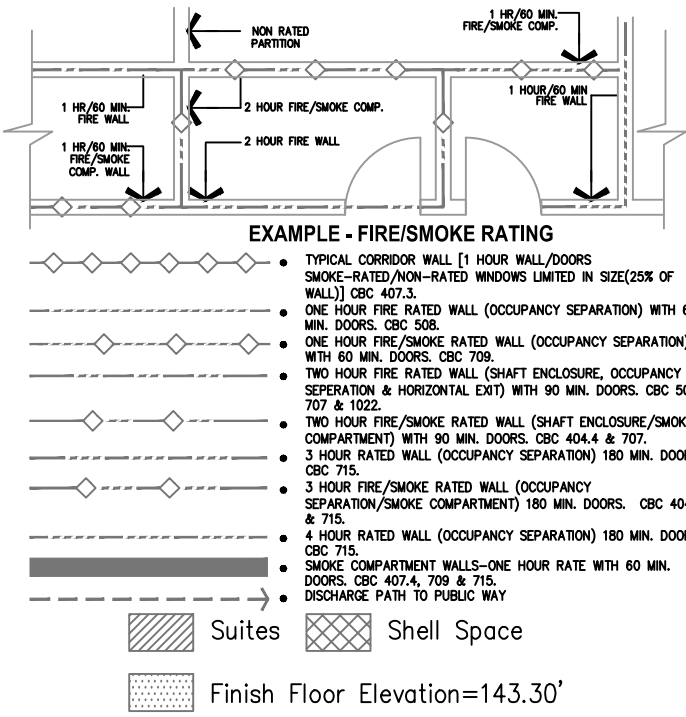
DRAWING TITLE

**LOWER LEVEL LIGHTING
PLAN AREA - G**

DRAWING NUMBER

EL3.0G

FOR KEY NOTES REFER TO SHEET "EL3A"



S	NIC	
R		
K	L	P N
J	H	M
D	E	G
C	B	F
		A

Bergelectric Corp. Contractors & Engineers

RECORD SET

08/17/12

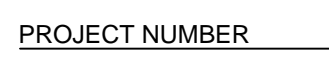
1650 W. Centinela Ave., Los Angeles, CA 90045, (310) 337-1377

A1 Key Plan
N.T.S.

RECORD SET

5650 W. Centinela Ave., Los Angeles, CA 90045, (310) 337-1377

TOWER II



ISSUE

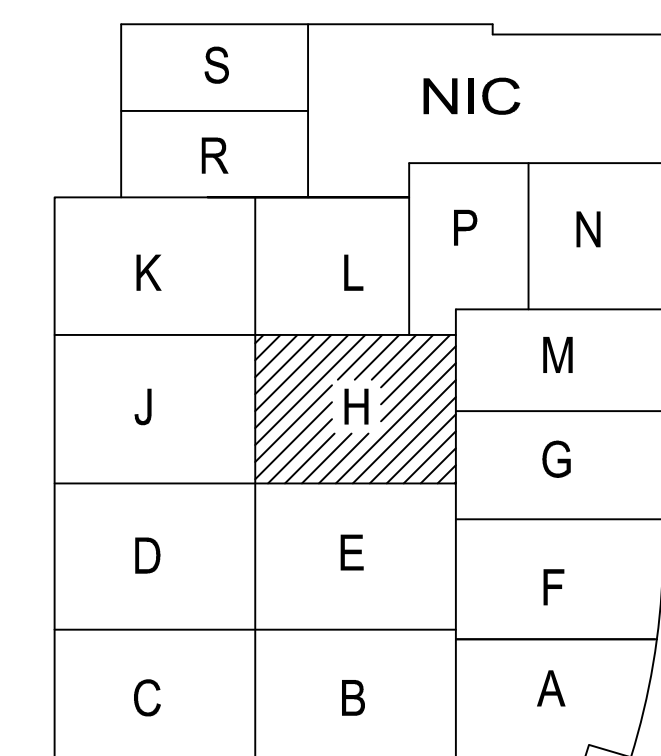
DATE _____

SCALE _____

DRAWING TITLE

DRAWING NUMBER

EL3.0H



A1 Key Plan
N.T.S.

ARCHITECT OF RECORD

REVISIONS

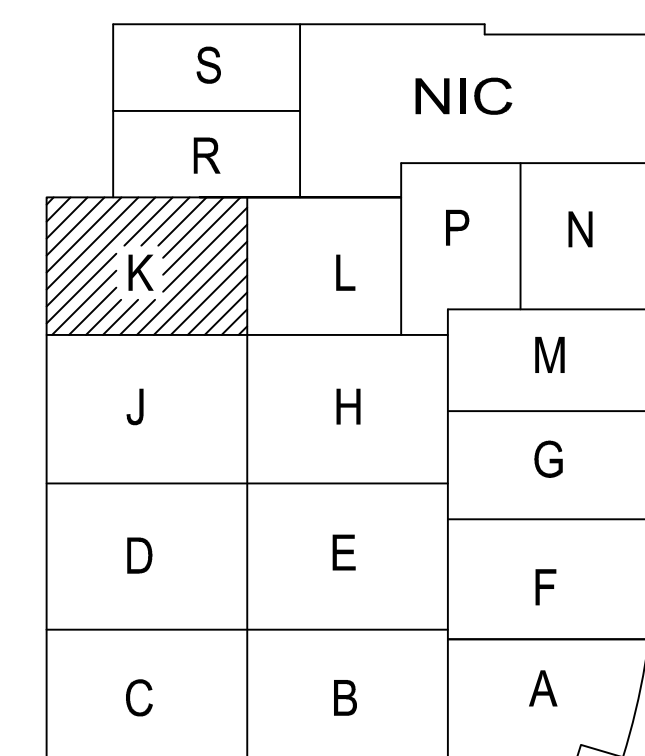
APPROVAL



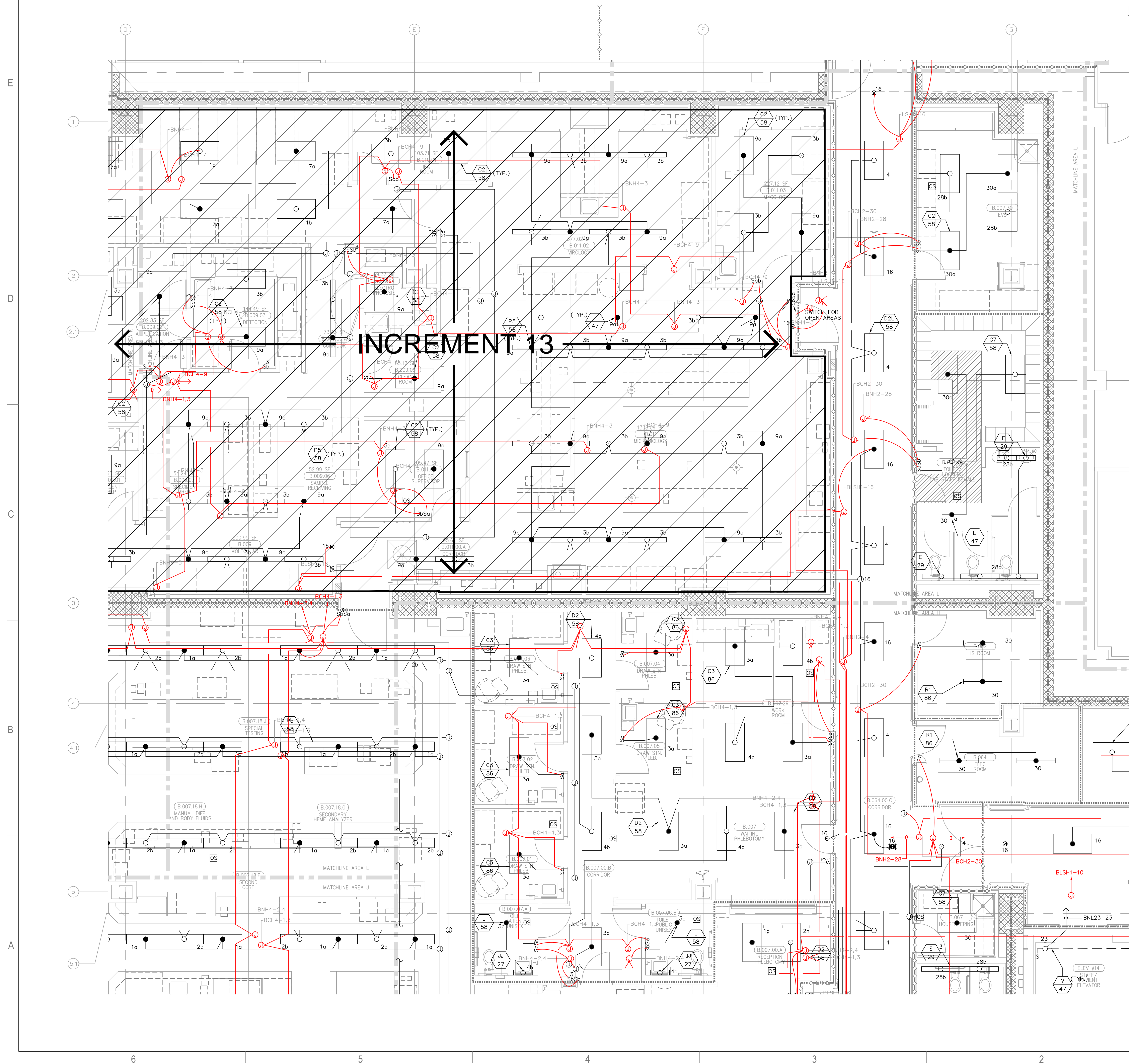
EL3.0J

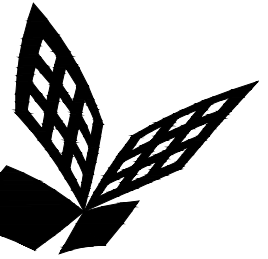


5650 W. Centinela Ave., Los Angeles, CA 90045, (310) 337-1377



A1 Key Plan
N.T.S.





FKP Architects

ARCHITECT OF RECORD

CONSULTANT

T M A D
TAYLOR
& GAINES
100 South Anaheim Boulevard, Suite 150
Anaheim, California 92805
Phone: 714.490.5555 Fax: 714.490.5560
Project No. 2305-163-07

REVISIONS

1 02/02/10 OSHPD CHANGE ORDER #9
2 02/14/11 CHANGE ORDER #122
3 12/19/11 CHANGE ORDER #294

APPROVAL

PROJECT NAME

CHILDREN'S HOSPITAL
OF ORANGE COUNTY
455 S. Main St.
Orange, CA 92868-3874

TOWER II



PROJECT NUMBER

12011.00
Increment #7

OSHPD - PROJECT NUMBER

IL 072072-30

ISSUE

OSHPD PERMIT

DATE

01/27/2010

SCALE

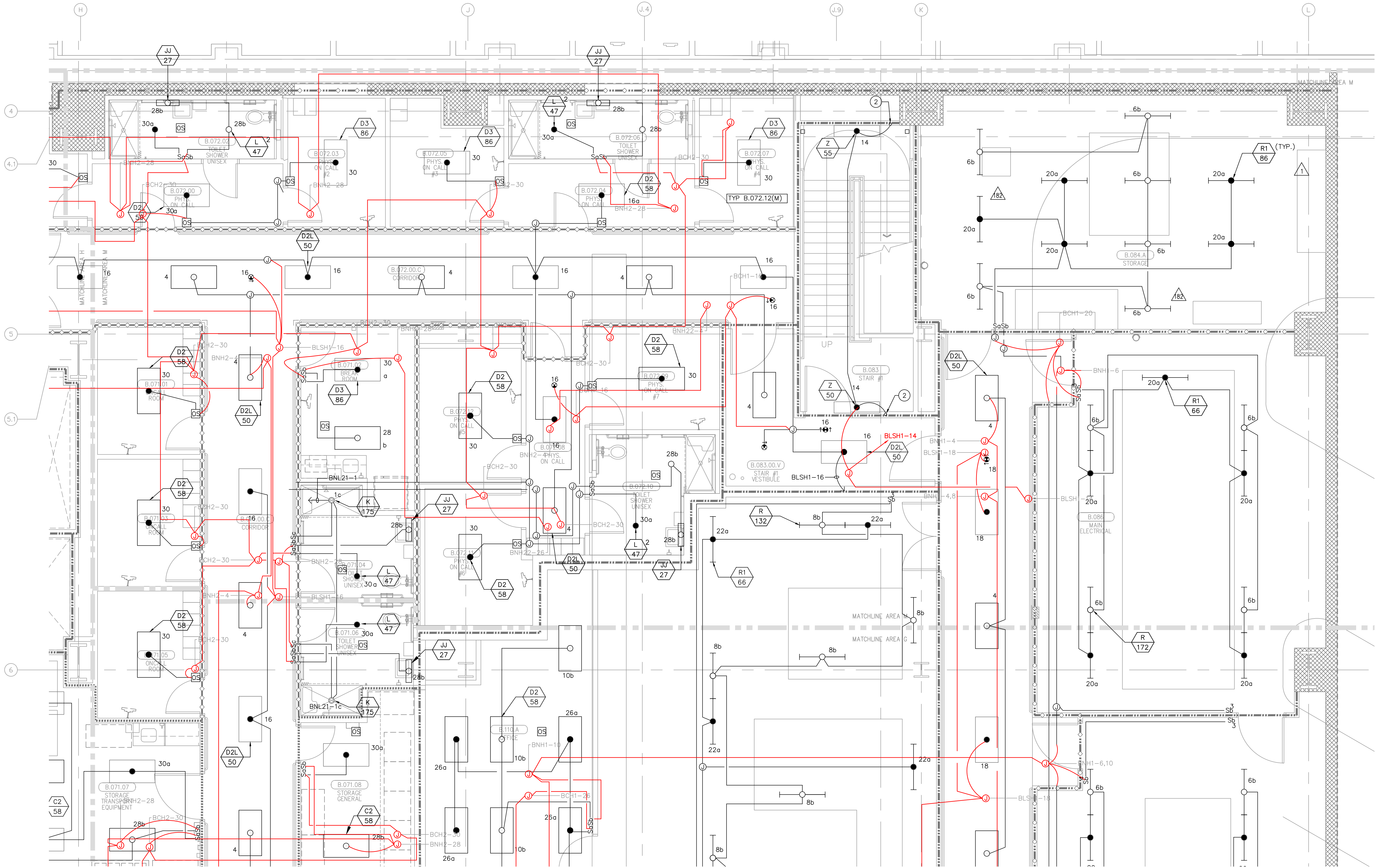
1/4"=1'-0"

DRAWING TITLE

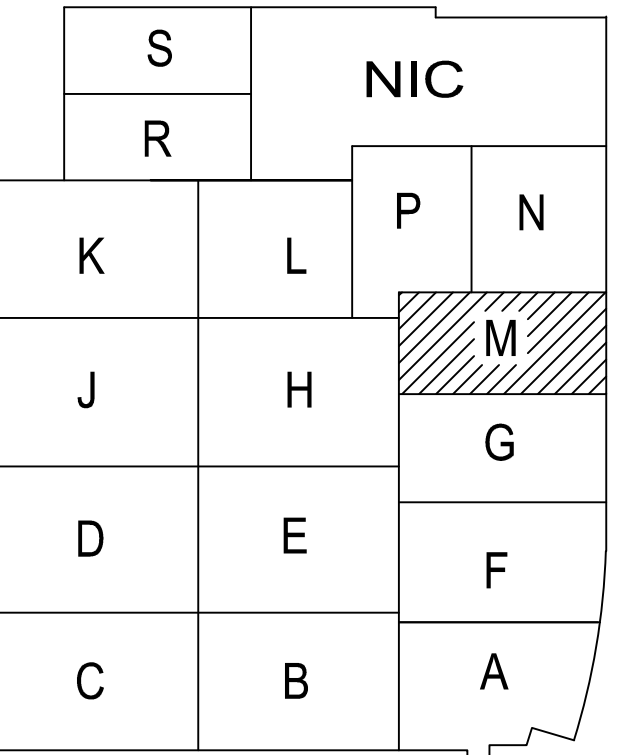
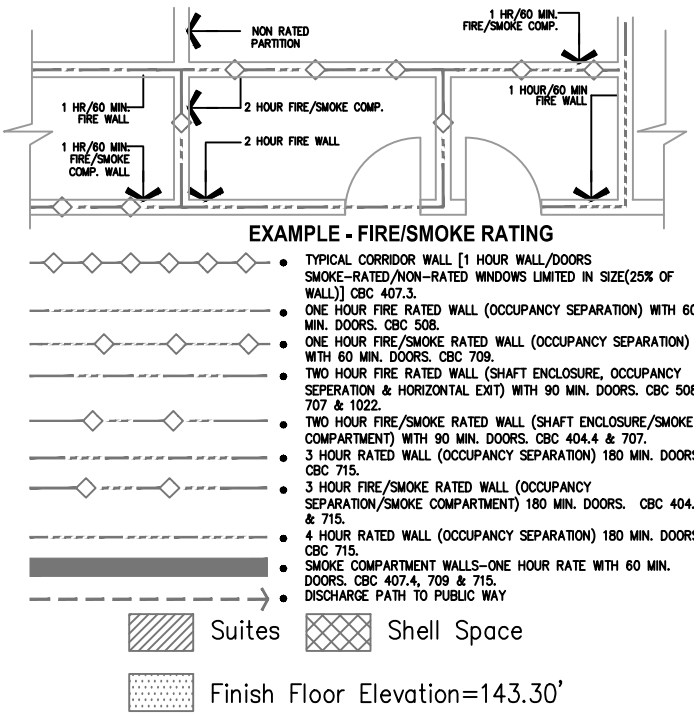
LOWER LEVEL LIGHTING
PLAN AREA - M

DRAWING NUMBER

EL3.0M



FOR KEY NOTES REFER TO SHEET "EL3A"



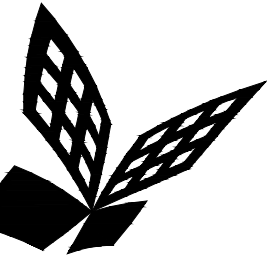
Bergelectric Corp. Contractors & Engineers

RECORD SET

08/17/12

1650 W. Centinela Ave., Los Angeles, CA 90045, (310) 337-1377

A1 Key Plan
N.T.S.



FKP Architects

ARCHITECT OF RECORD

CONSULTANT

T M A D
TAYLOR
& G AINES

- STRUCTURAL
- MECHANICAL
- ELECTRICAL
- CIVIL

100 South Anaheim Boulevard, Suite 150
Anaheim, California 92805
Phone: 714.490.5555 Fax: 714.490.5560
Project No. 2305-163-07

REVISIONS

A23 09/12/11 CHANGE ORDER #257

APPROVAL

PROJECT NAME

**CHILDREN'S HOSPITAL
OF ORANGE COUNTY**
455 S. Main St.
Orange, CA 92868-3874

TOWER II



PROJECT NUMBER

**12011.00
Increment #7**

OSHPD - PROJECT NUMBER
IL 072072-30

ISSUE

OSHPD PERMIT

DATE

01/27/2010

SCALE

1/4"=1'-0"
DRAWING TITLE

**LOWER LEVEL LIGHTING
PLAN AREA - Q**

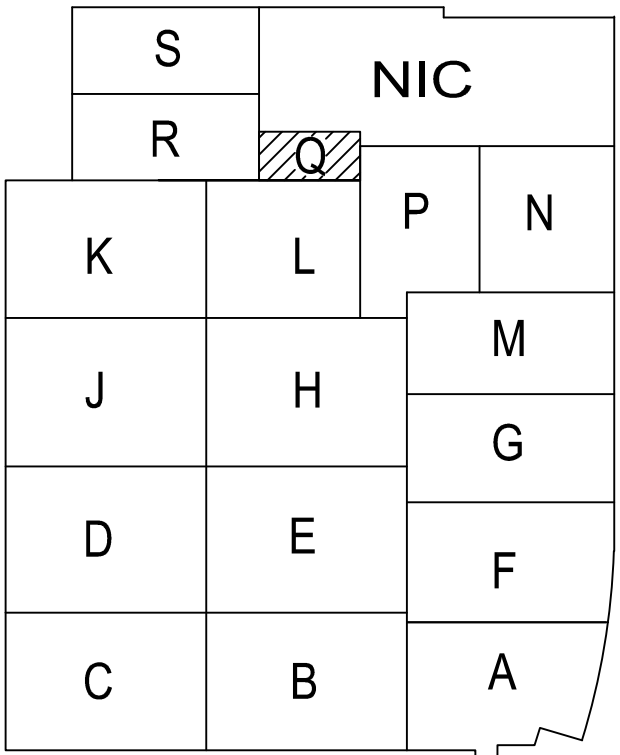
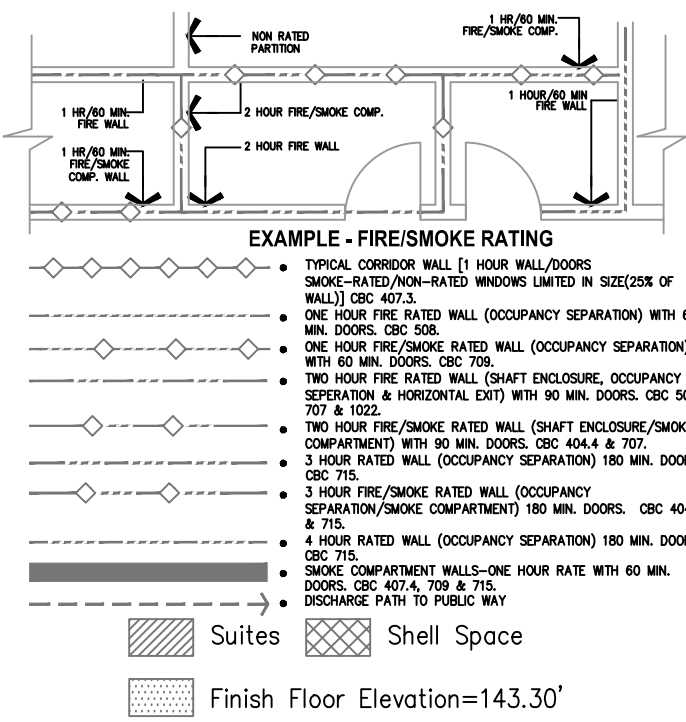
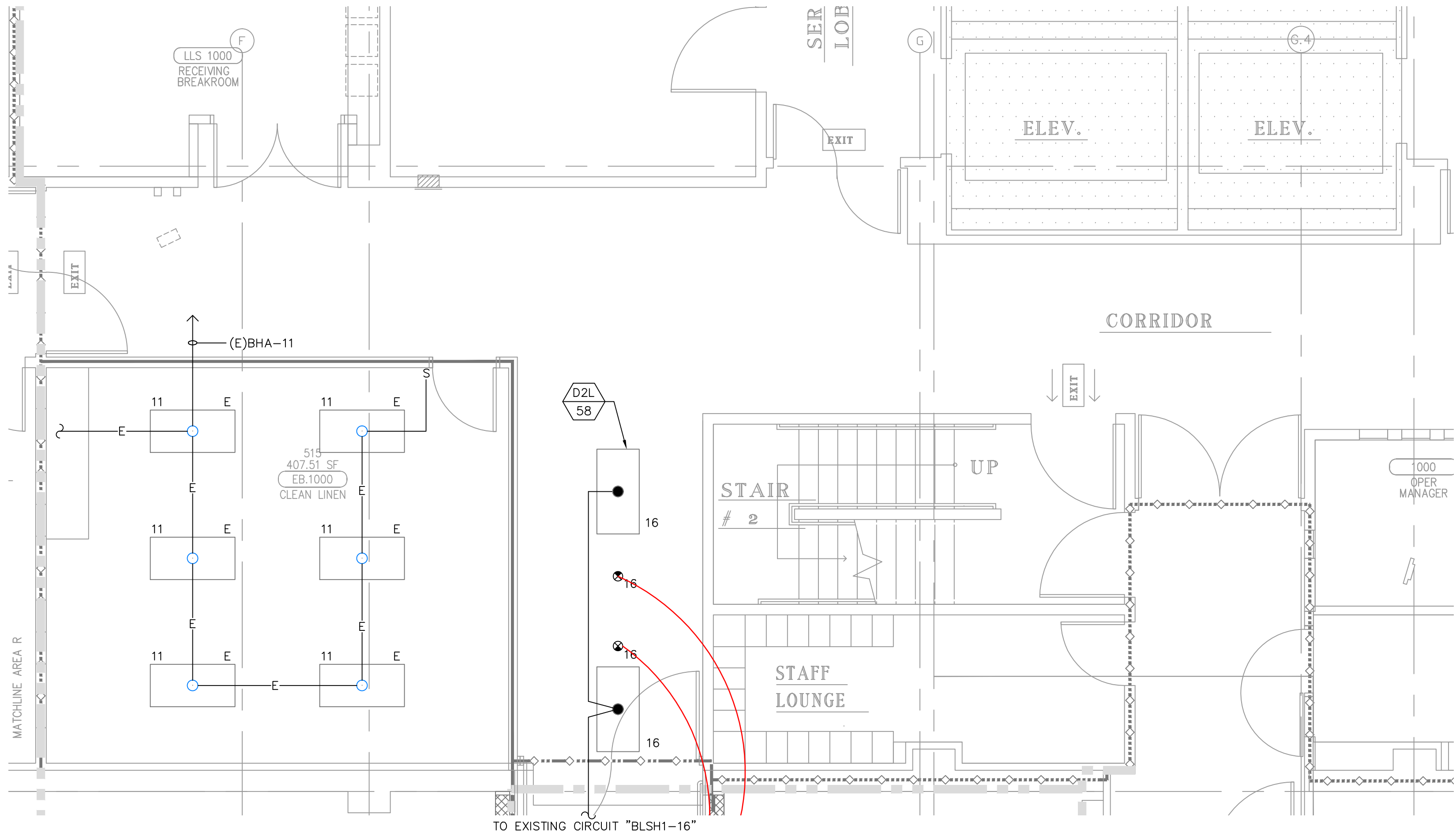
DRAWING NUMBER

EL3.0Q

MOUNTING: SURFACE										EXISTING PANEL-BHA										LOCATION:									
VOLTAGE: 277/480V, 3Ø, 4W																				225 AMP BUS									
																				225A-3P MCB									
DESCRIPTION										VOLT-AMPERES										DESCRIPTION									
										ØA ØB ØC																			
BOILER PLAN (EXISTING)										2300										CORRIDOR (EXISTING)									
BOILER PLAN (EXISTING)										2400										CORRIDOR (EXISTING)									
BOILER PLAN (EXISTING)										2800										400									
OFFICE SOUTH (EXISTING)										2700										CORRIDOR (EXISTING)									
OFFICE SOUTH (EXISTING)										2650										CORRIDOR (EXISTING)									
OFFICE, EVS (EXISTING)										2000										700									
PHAR. AREA (EXISTING)										2700										CORR. & TUNNEL (EXISTING)									
PHAR. AREA (EXISTING)										2350										N. E. OFFICE (EXISTING)									
PHAR. AREA (EXISTING)										2400										N. E. OFFICE (EXISTING)									
OFFICE (EXISTING)										1900										TRACE HTRS. (EXISTING)									
OFF. & ELEC. (EXISTING)										1950										TRACE HTRS. (EXISTING)									
EQUIP. (EXISTING)										1830										1000									
EQUIP. (EXISTING)										400										AREA D (EXISTING)									
EQUIP. (EXISTING)										400										AREA D (EXISTING)									
EXIST.HTR. (EXISTING)										1500										SPARE									
EXIST.HTR. (EXISTING)										1500										SPARE									
EXIST.HTR. (EXISTING)										1500										AREA D (EXISTING)									
EXIST.HTR. (EXISTING)										1500										SPARE									
EXIST.HTR. (EXISTING)										1500										SPARE									
SUBTOTAL										13000 12750 12430										SUBTOTAL									
CONTINUOUS LOAD, 58080 VA X 1.25 = 72600 VA										435 LIGHTING OUTLETS										VA PER PHASE									
+ OTHER LOAD = 13600 VA										21 MISCELLANEOUS OUTLETS										27800 24850 19030									
TOTAL LOAD = 86200 VA																				71.7 KVA									
OR = 104 AMPS																				TOTAL CONNECTED LOAD									
																				NOTES									

KEY NOTES:

LETTER "E" INDICATES EXISTING TO STAY.



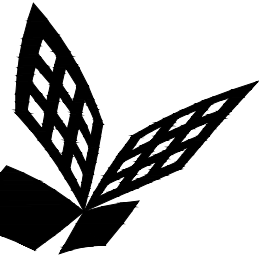
(A1) Key Plan
N.T.S.

Bergelectric Corp. Contractors & Engineers

RECORD SET

08/17/12

#C10-#00046
5650 W. Centinela Ave., Los Angeles, CA 90045, (310) 337-1377



FKP Architects

ARCHITECT OF RECORD

CONSULTANT

T M A D
TAYLOR
& G AINES

- STRUCTURAL
- MECHANICAL
- ELECTRICAL
- CIVIL

100 South Anaheim Boulevard, Suite 150
Anaheim, California 92805
Phone: 714.490.5555 Fax: 714.490.5560
Project No. 2305-163-07

REVISIONS

29a 07/14/11 CHANGE ORDER #230

APPROVAL

PROJECT NAME

**CHILDREN'S HOSPITAL
OF ORANGE COUNTY**
455 S. Main St.
Orange, CA 92668-3874

TOWER II



PROJECT NUMBER

**12011.00
Increment #7**

OSHPD - PROJECT NUMBER

IL 072072-30

ISSUE

OSHPD PERMIT

DATE

01/27/2010

SCALE

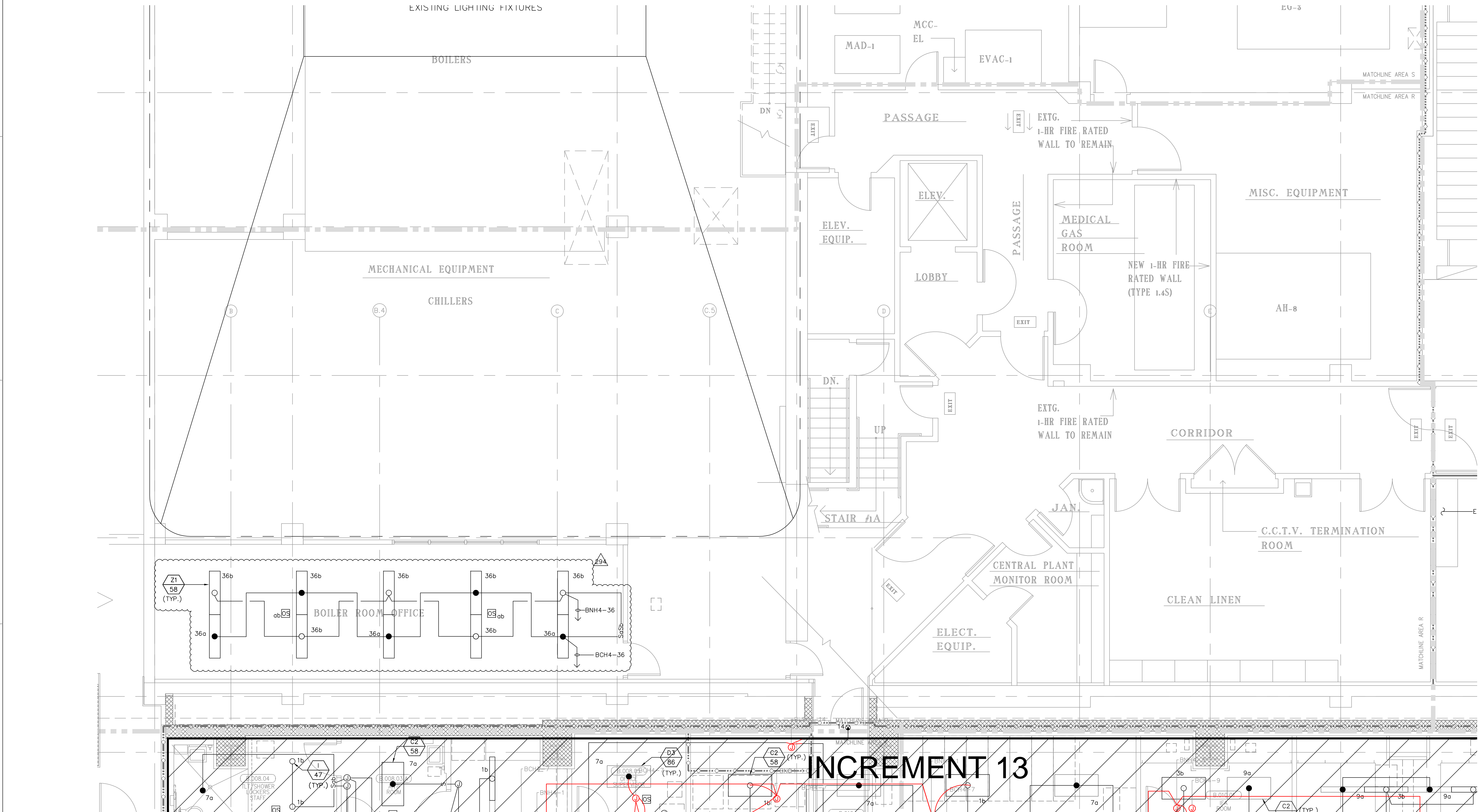
1/4"=1'-0"

DRAWING TITLE

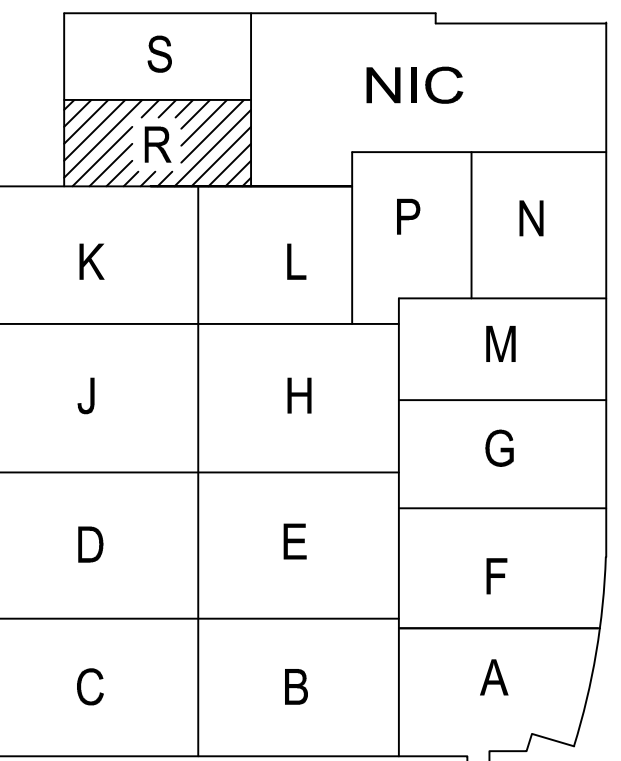
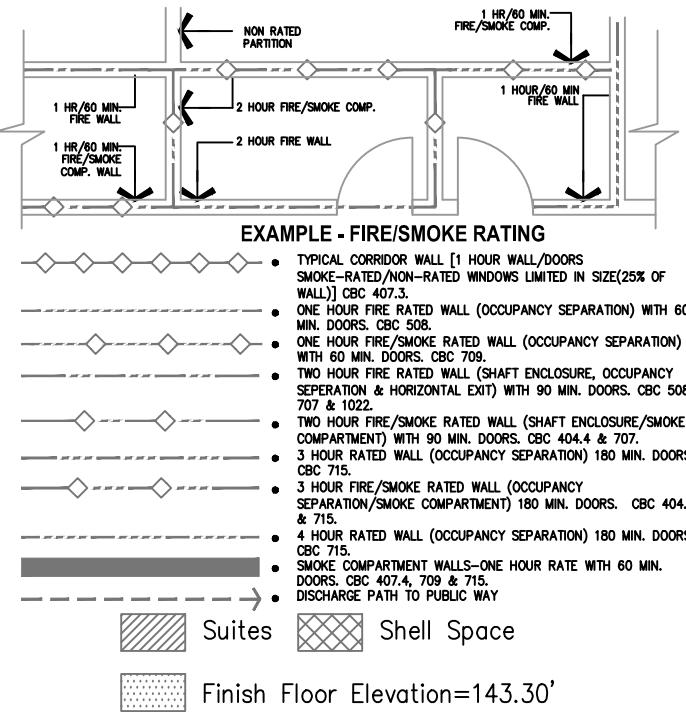
**LOWER LEVEL LIGHTING
PLAN AREA - R**

DRAWING NUMBER

EL3.0R



FOR KEY NOTES REFER TO SHEET "EL3A"



(A1) Key Plan
N.T.S.

Bergelectric Corp. Contractors & Engineers

RECORD SET

08/17/12

5650 W. Centinela Ave., Los Angeles, CA 90045, (310) 337-1377

