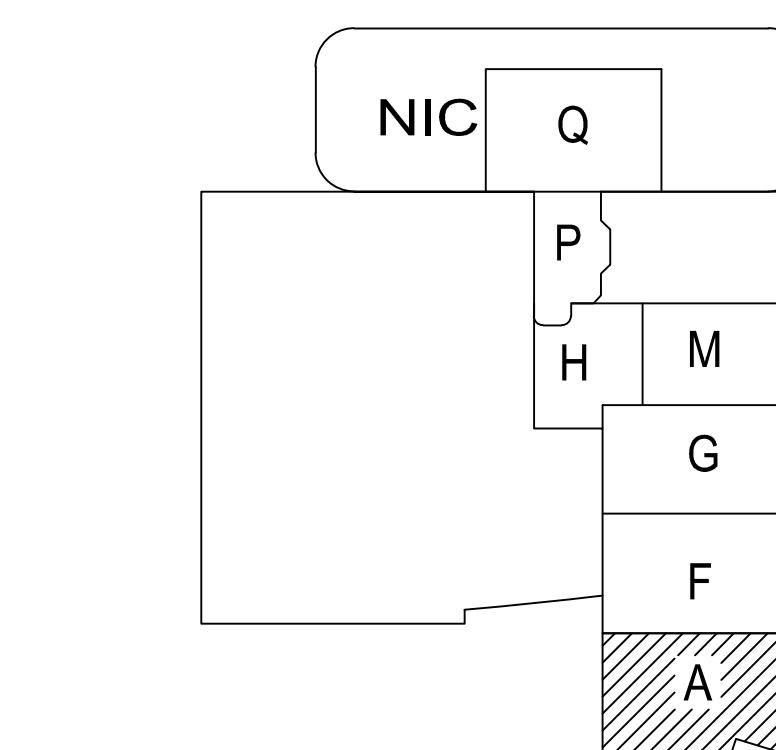
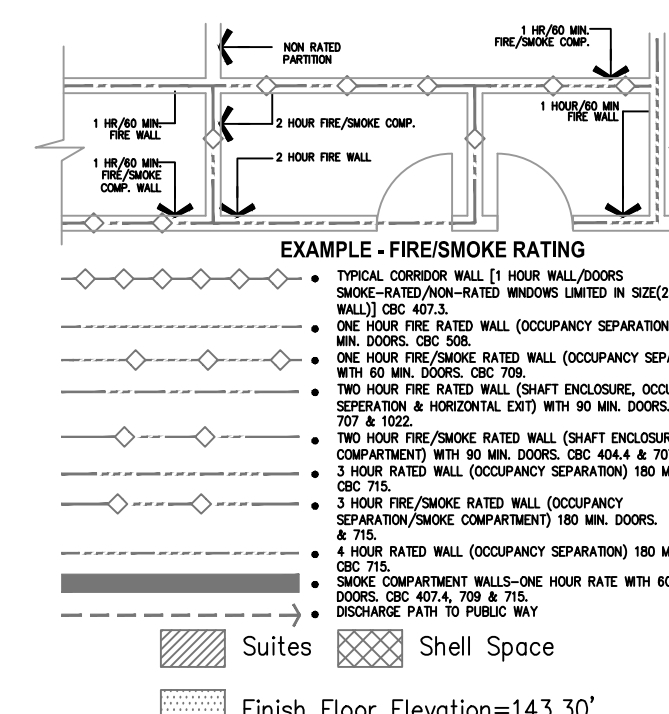
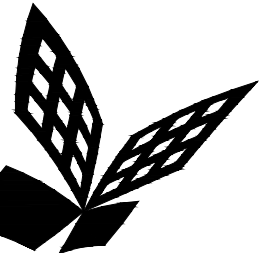


EL3.8A



A1 Key Plan
N.T.S.



FKP Architects

ARCHITECT OF RECORD

CONSULTANT

T M A D
TAYLOR
& G AINES

• STRUCTURAL
• MECHANICAL
• ELECTRICAL
• CIVIL

100 South Anaheim Boulevard, Suite 150
Anaheim, California 92805
Phone: 714.490.5555 Fax: 714.490.5560
Project No. 2305-163-07

REVISIONS

APPROVAL

PROJECT NAME

CHILDREN'S HOSPITAL
OF ORANGE COUNTY
455 S. Main St.
Orange, CA 92868-3874

TOWER II



PROJECT NUMBER

12011.00
Increment #7

OSHPD - PROJECT NUMBER
IL 072072-30

ISSUE

OSHPD PERMIT

DATE

01/27/2010

SCALE

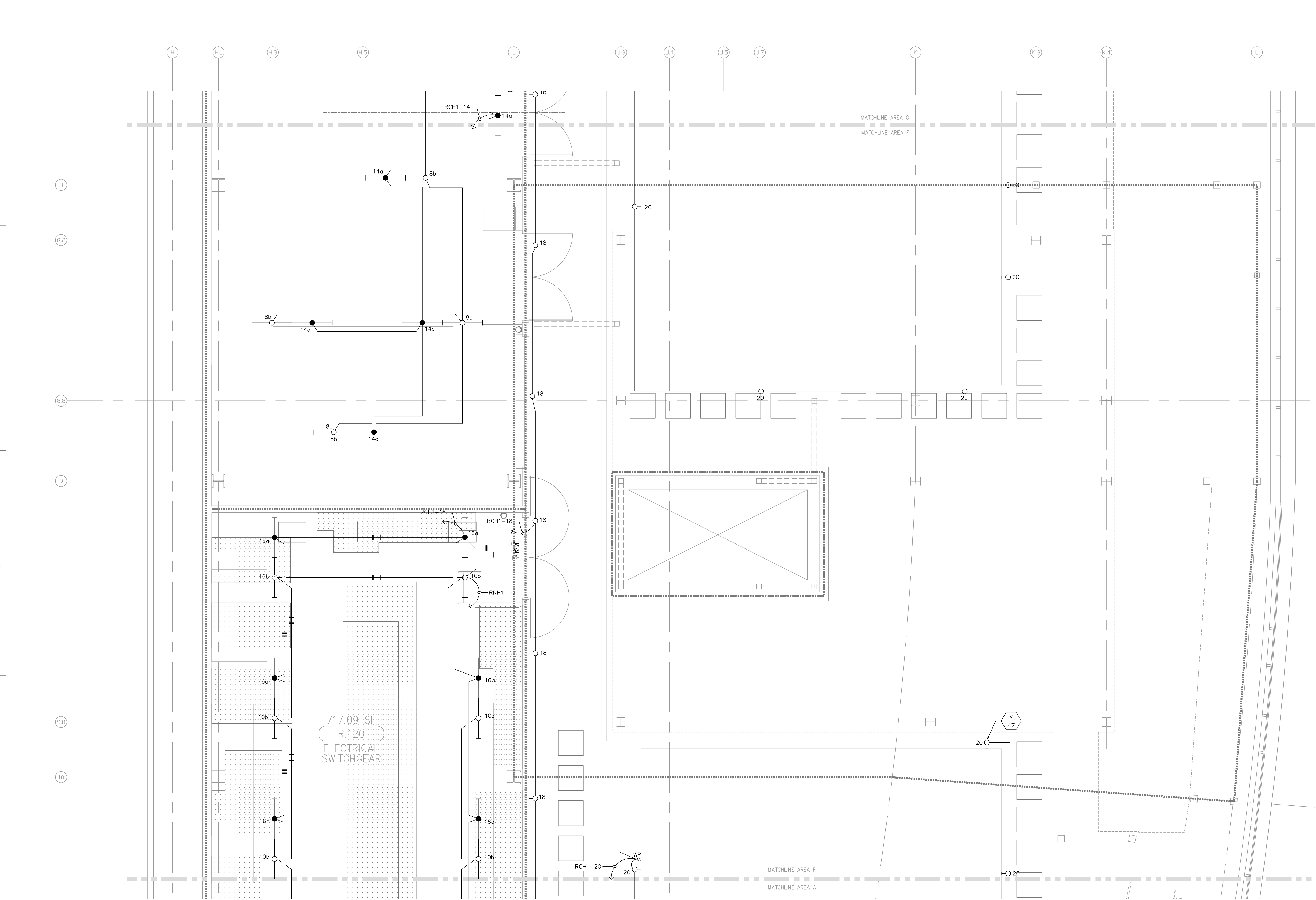
1/4" = 1' - 0"

DRAWING TITLE

PENTHOUSE 1 LIGHTING
PLAN AREA - F

DRAWING NUMBER

EL3.8F



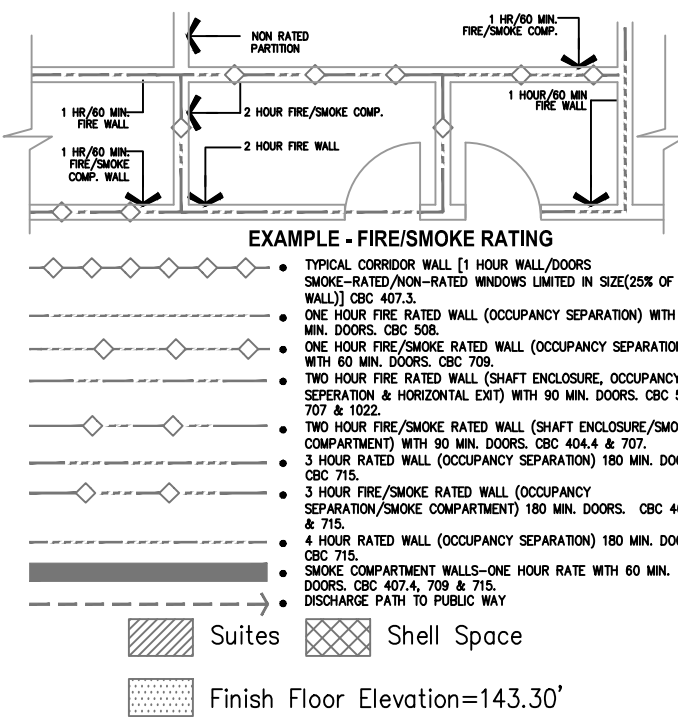
FOR KEY NOTES REFER TO SHEET "EL3A"

Bergelectric Corp. Contractors & Engineers

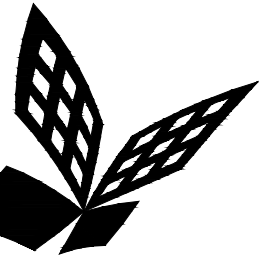
RECORD SET

08/17/12

5650 W. Centinella Ave., Los Angeles, CA 90045, (310) 337-1377



A1 Key Plan
N.T.S.



FKP Architects

ARCHITECT OF RECORD

CONSULTANT

T M A D
TAYLOR
& GAINES

- STRUCTURAL
- MECHANICAL
- ELECTRICAL
- CIVIL

100 South Anaheim Boulevard, Suite 150
Anaheim, California 92805
Phone: 714.490.5555 Fax: 714.490.5560
Project No. 2305-163-07

REVISIONS

APPROVAL

PROJECT NAME

**CHILDREN'S HOSPITAL
OF ORANGE COUNTY**
455 S. Main St.
Orange, CA 92668-3874

TOWER II



PROJECT NUMBER

**12011.00
Increment #7**

OSHPD - PROJECT NUMBER
IL 072072-30

ISSUE

OSHPD PERMIT

DATE

01/27/2010

SCALE

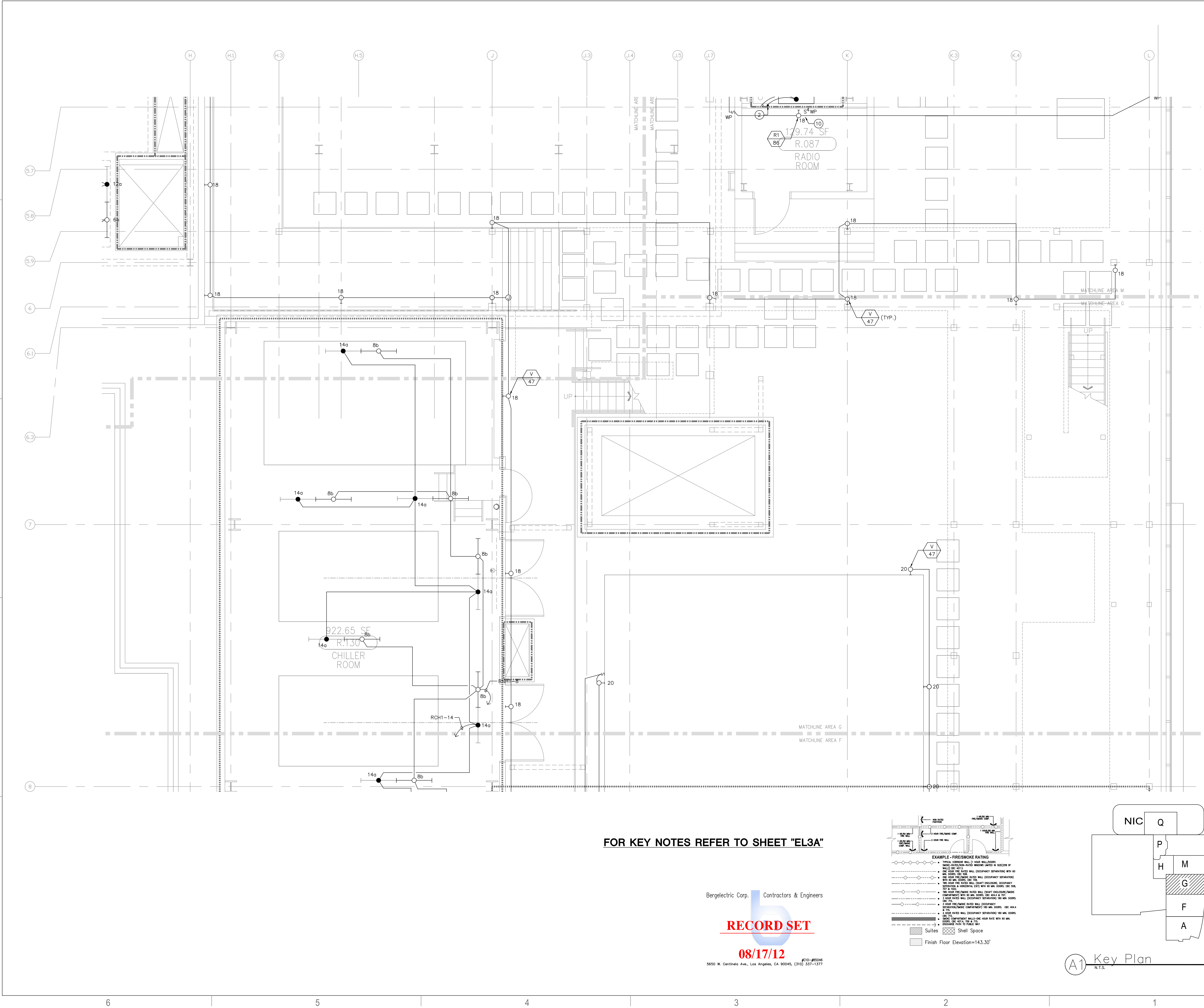
1/4" = 1' - 0"

DRAWING TITLE

**PENTHOUSE 1 LIGHTING
PLAN AREA - G**

DRAWING NUMBER

EL3.8G



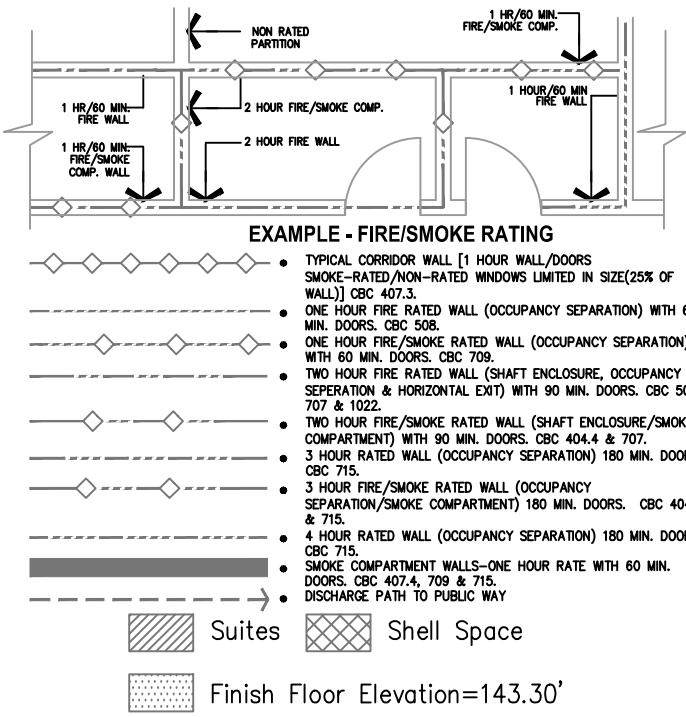
FOR KEY NOTES REFER TO SHEET "EL3A"

Bergelectric Corp. Contractors & Engineers

RECORD SET

08/17/12

6500 W. Centinela Ave., Los Angeles, CA 90045, (310) 537-1377



A1 Key Plan
N.T.S.

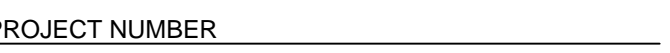
ARCHITECT OF RECORD

CONSULTANT _____

REVISIONS

APPROVAL _____

TOWER II



ISSUE

DOSH PD PERMIT

DATE

01/27/2010

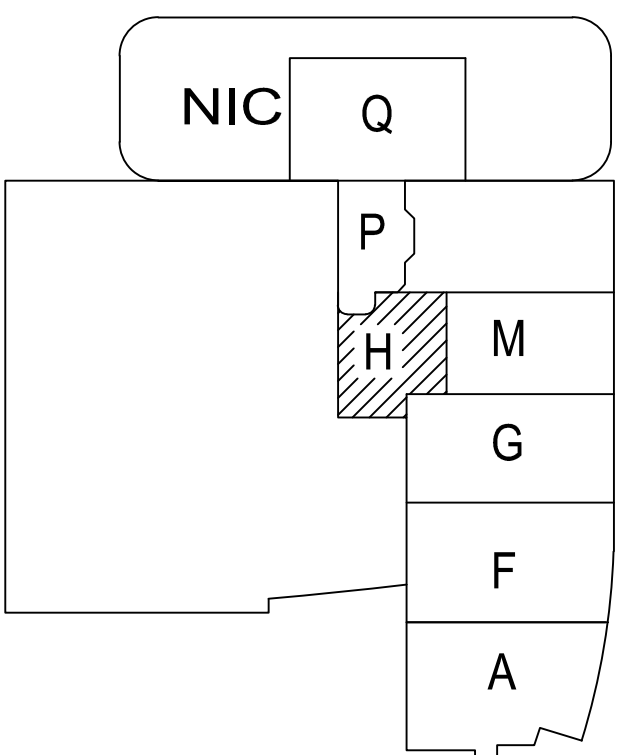
SCALE

DRAWING NUMBER _____

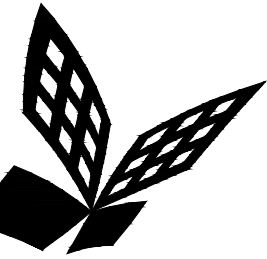
EL3.8H



5650 W. Centinela Ave., Los Angeles, CA 90045, (310) 337-1377



A1 Key Plan
N.T.S.



FKP Architects

ARCHITECT OF RECORD

CONSULTANT

T M A D
TAYLOR
& G AINES

- STRUCTURAL
- MECHANICAL
- ELECTRICAL
- CIVIL

100 South Anaheim Boulevard, Suite 150
Anaheim, California 92805
Phone: 714.490.5555 Fax: 714.490.5560
Project No. 2305-163-07

REVISIONS

27 11/22/10 CHANGE ORDER #29

APPROVAL

PROJECT NAME

**CHILDREN'S HOSPITAL
OF ORANGE COUNTY**
455 S. Main St.
Orange, CA 92668-3874

TOWER II



PROJECT NUMBER

**12011.00
Increment #7**

OSHPD - PROJECT NUMBER

IL 072072-30

ISSUE

OSHPD PERMIT

DATE

01/27/2010

SCALE

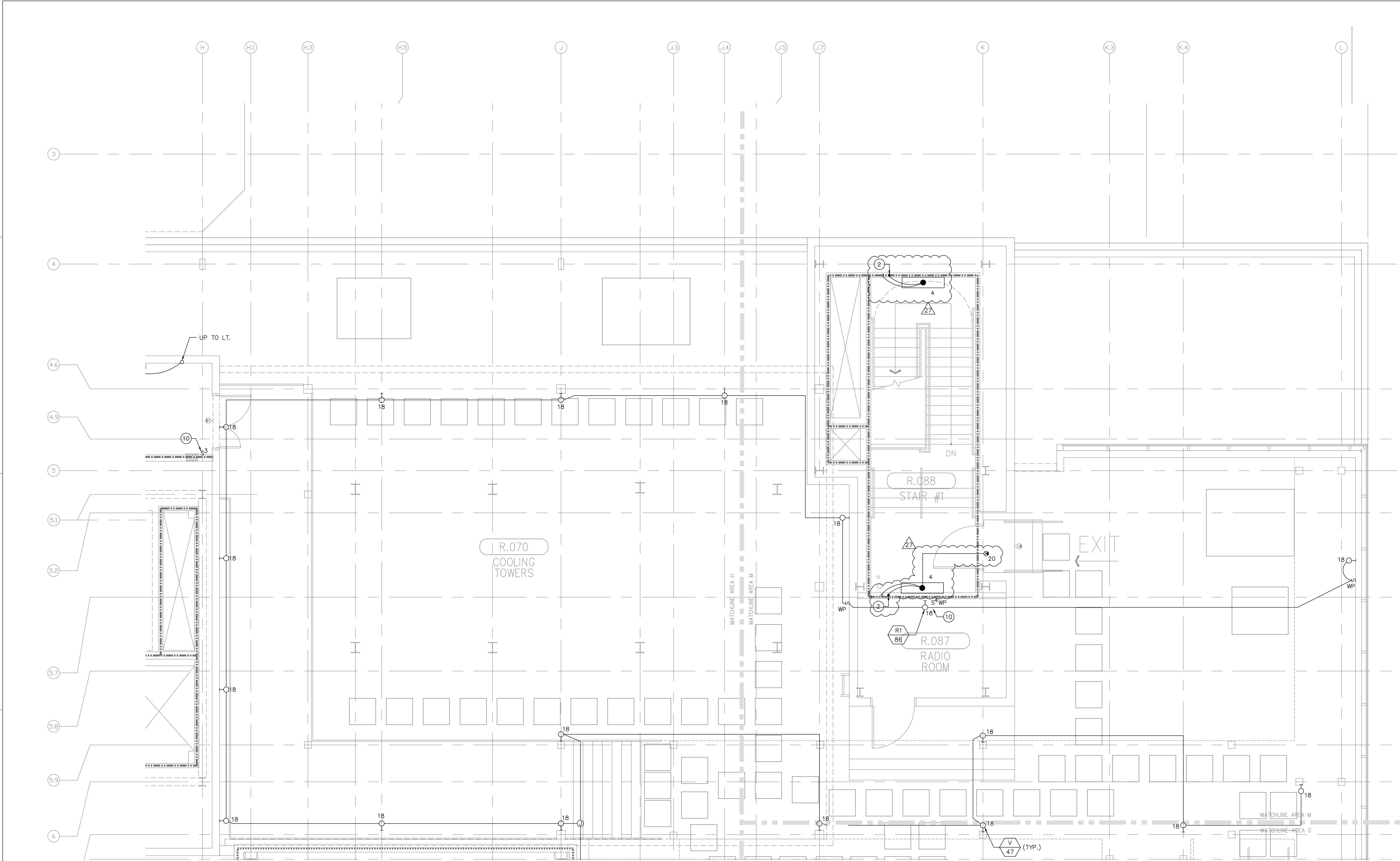
1/4" = 1' - 0"

DRAWING TITLE

**PENTHOUSE 1 LIGHTING
PLAN AREA - M**

DRAWING NUMBER

EL3.8M



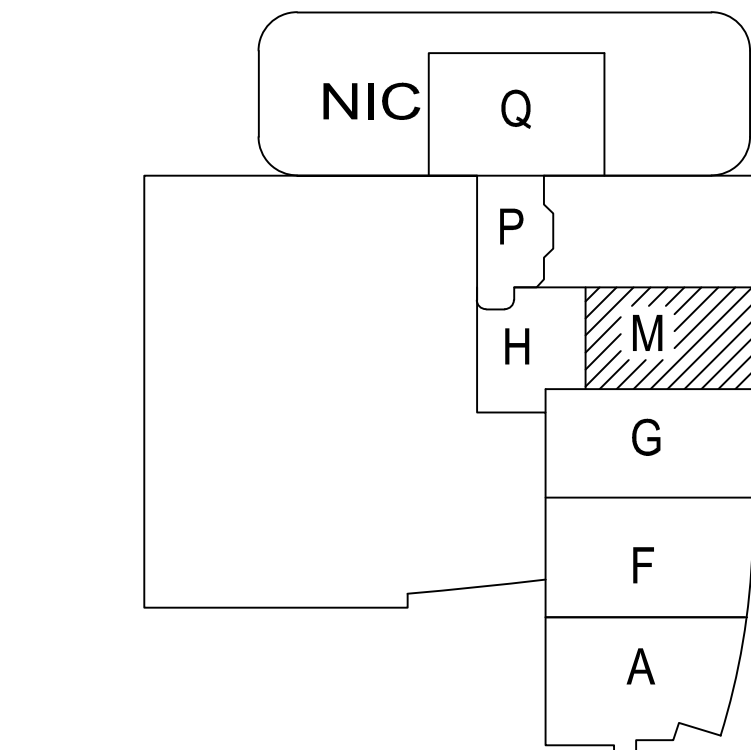
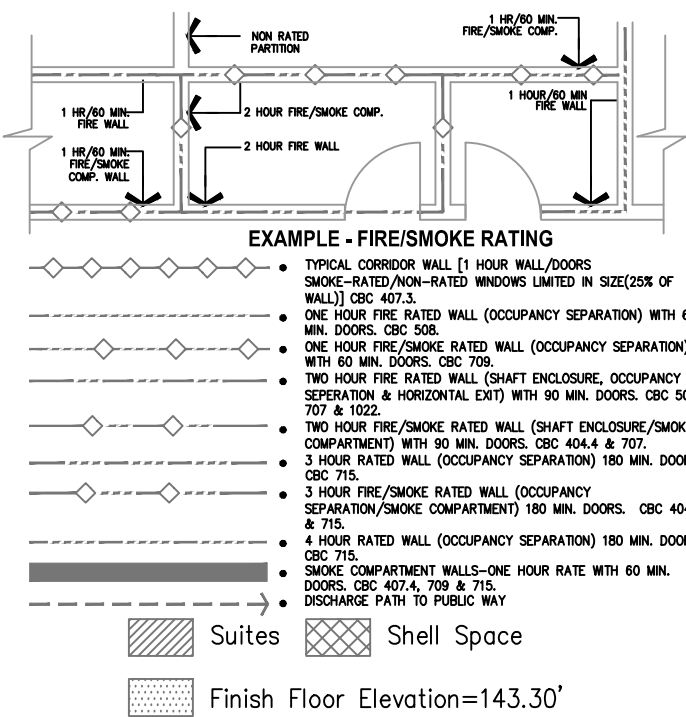
FOR KEY NOTES REFER TO SHEET "EL3A"

Bergelectric Corp. Contractors & Engineers

RECORD SET

08/17/12

5650 W. Centinela Ave., Los Angeles, CA 90045, (310) 337-1377



A1 Key Plan
N.T.S.