

ARCHITECT OF RECORD

CONSULTANT

STRUCTURAL
MECHANICAL
ELECTRICAL
CIVIL

REVISIONS

APPROVAL _____

TOWER II



OSHPD - PROJECT NUMBER
L 072072-30

DATE _____

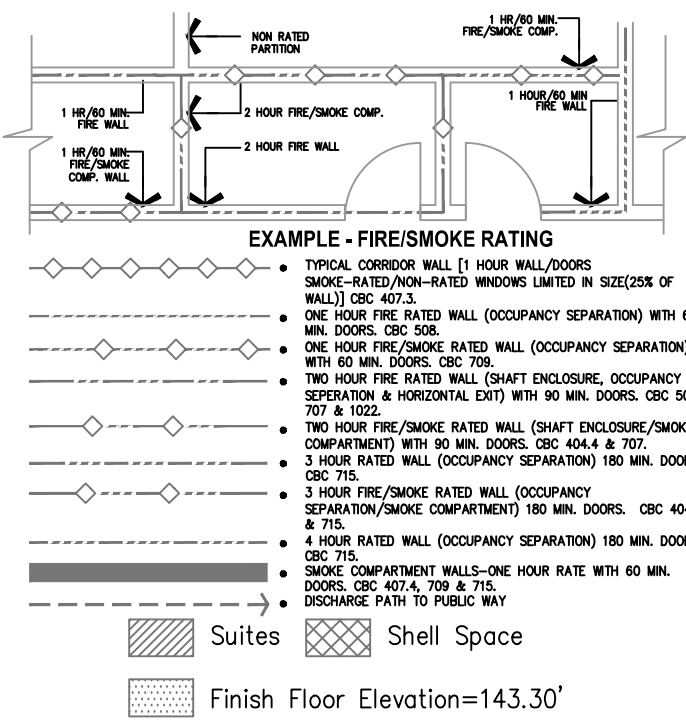
SCALE _____

LEVEL 1 POWER PLAN

AREA - A

DRAWING NUMBER

EP3.1A



FOR KEY NOTES REFER TO SHEET "EP3A"

Bergelectric Corp.  Contractors & Engineers

RECORD SET

08/17/12

5650 W. Centinela Ave., Los Angeles, CA 90045, (310) 337-1377

A1 Key Plan
N.T.S.

ARCHITECT OF RECORD

CONSULTANT

T M A D
TAYLOR
& GAINES

- STRUCTURAL
- MECHANICAL
- ELECTRICAL
- CIVIL

100 South Anaheim Boulevard, Suite 150
Anaheim, California 92805
Phone: 714.490.5555 Fax: 714.490.5560
Project No. 2305-163-07

REVISIONS

1	2.2.10	OSHPD CHANGE ORDER #
27	11/22/10	CHANGE ORDER #29
163	02/24/10	CHANGE ORDER #141
897	12/19/11	CHANGE ORDER #294

APPROVAL

Bergelectric Corp. Contractors & Engineers

08/17/12

AC10-#85048
5650 W. Centinela Ave., Los Angeles, CA 90045. (310) 337-1377

PROJECT NAME

CHILDREN'S HOSPITAL
OF ORANGE COUNTY

455 S. Main St.
Orange, CA 92868-3874

TOWER II



PROJECT NUMBER

12011.00
Increment #7

OSHPD - PROJECT NUMBER
IL 072072-30

ISSUE

OSHPD PERMIT

DATE _____

01/27/2010

SCALE

$$1/4'' = 1' - 0''$$

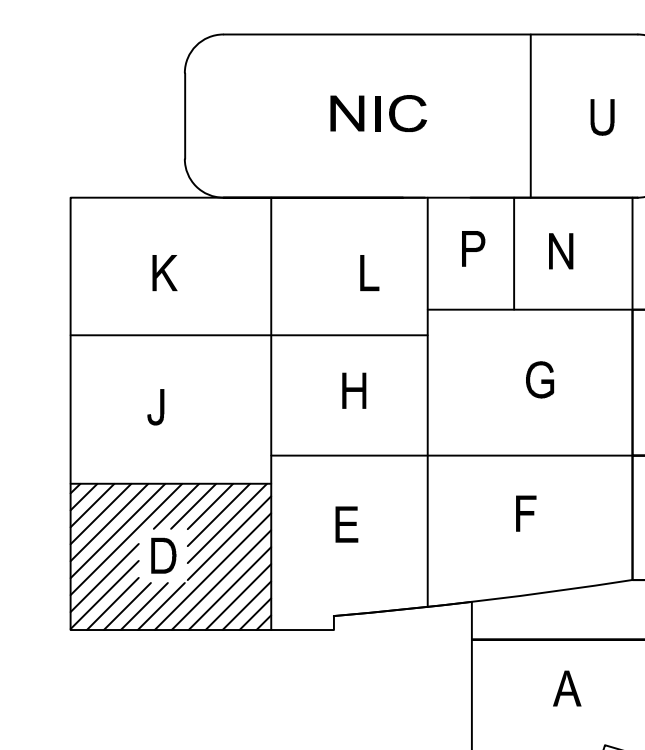
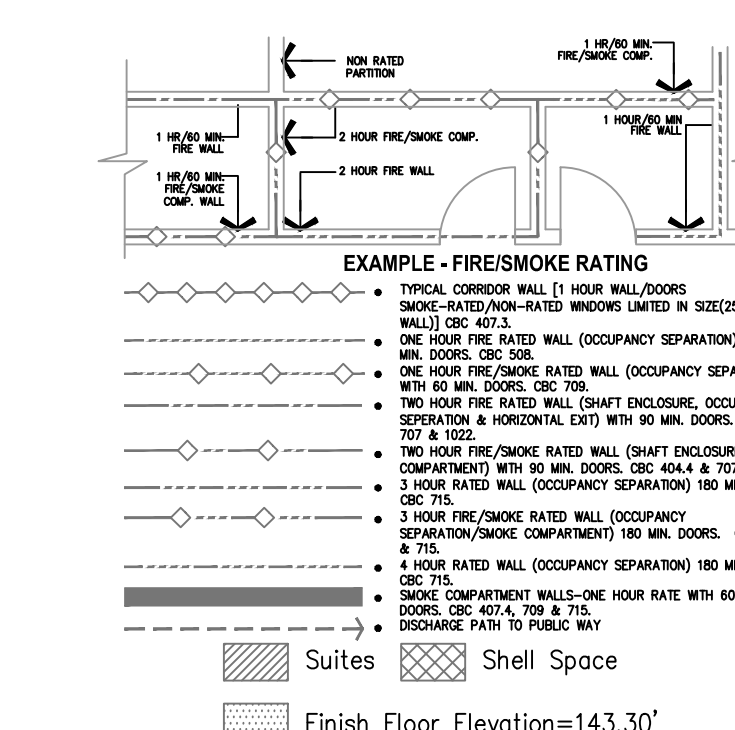
DRAWING TITLE

LEVEL 1

LEVEL 1 POWER PLAN
AREA - D

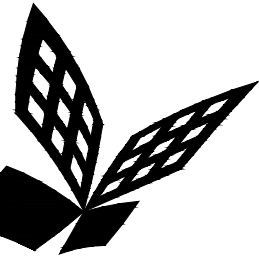
DRAWING NUMBER

EP3.1D



A1 Key Plan

FOR KEY NOTES REFER TO SHEET "EP3A"



FKP Architects

ARCHITECT OF RECORD

CONSULTANT

T M A D
TAYLOR
& G AINES

- STRUCTURAL
- MECHANICAL
- ELECTRICAL
- CIVIL

100 South Anaheim Boulevard, Suite 150
Anaheim, California 92805
Phone: 714.490.5555 Fax: 714.490.5560
Project No. 2305-163-07

REVISIONS

807	12/19/11	CHANGE ORDER #294
883	12/22/11	CHANGE ORDER #295

APPROVAL

Bergelectric Corp. Contractors & Engineers

RECORD SET

08/17/12

6550 W. Centinela Ave., Los Angeles, CA 90045, (310) 337-1377

PROJECT NAME

**CHILDREN'S HOSPITAL
OF ORANGE COUNTY**
455 S. Main St.
Orange, CA 92868-3874

TOWER II



PROJECT NUMBER

**12011.00
Increment #7**

OSHPD - PROJECT NUMBER

IL 072072-30

ISSUE

OSHPD PERMIT

DATE

01/27/2010

SCALE

1/4" = 1'-0"

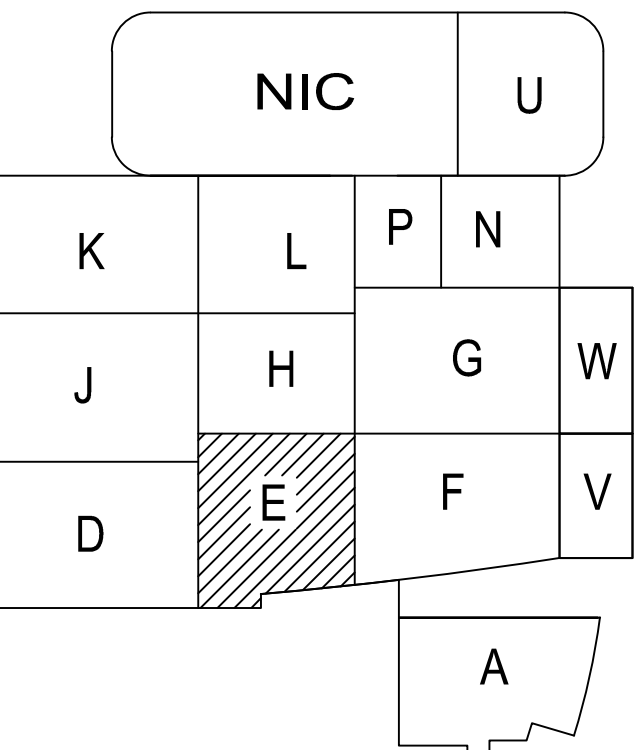
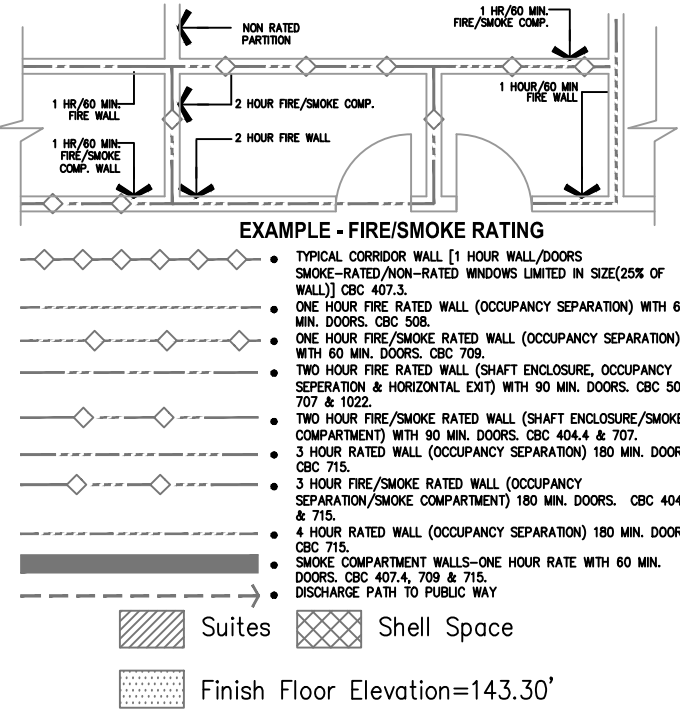
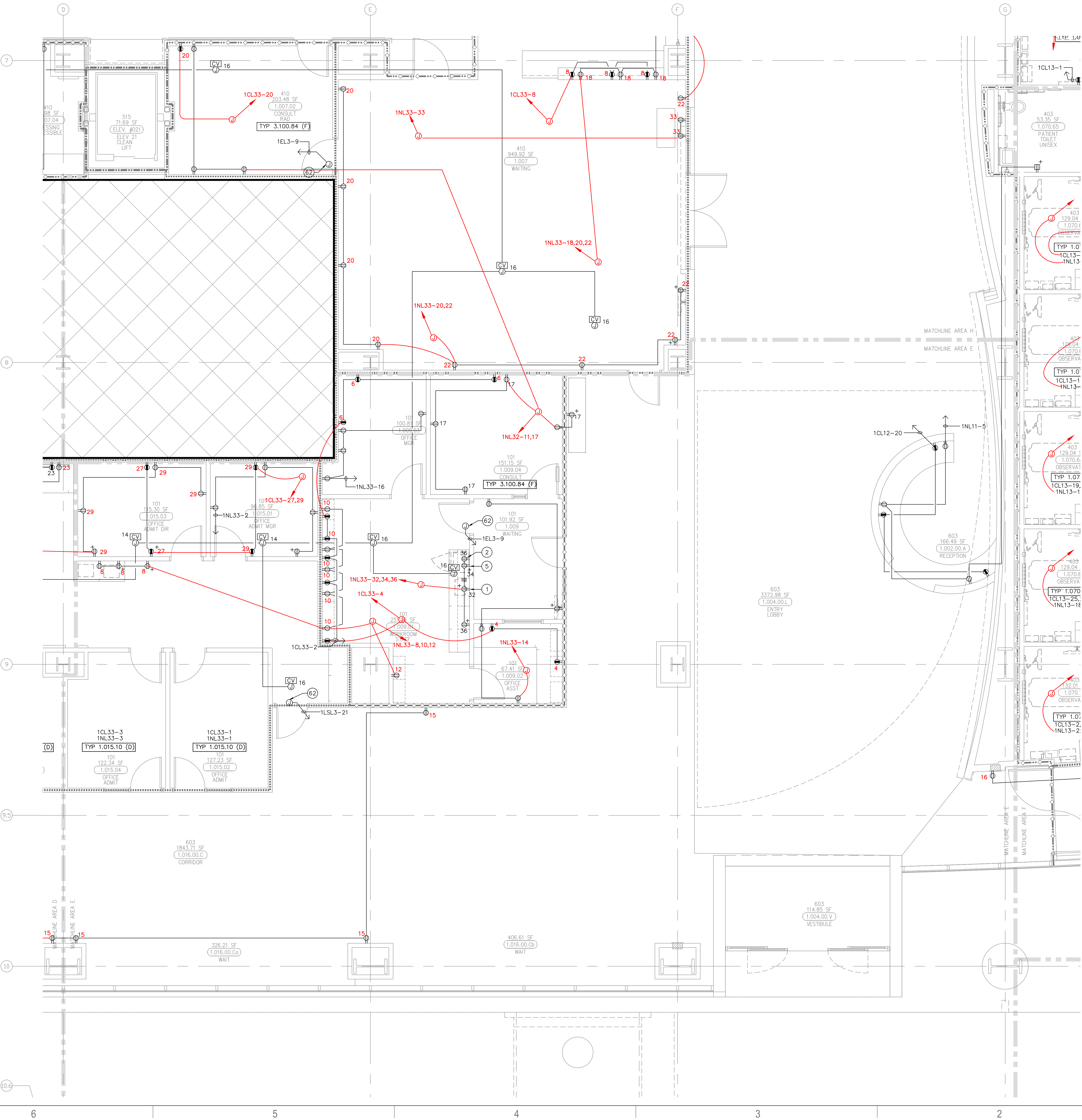
DRAWING TITLE

**LEVEL 1 POWER PLAN
AREA - E**

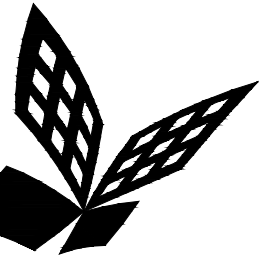
DRAWING NUMBER

EP3.1E

FOR KEY NOTES REFER TO SHEET "EP3A"



A1 Key Plan
N.T.S.



FKP Architects

ARCHITECT OF RECORD

CONSULTANT

T M A D
TAYLOR
& GAINES
100 South Anaheim Boulevard, Suite 150
Anaheim, California 92805
Phone: 714.490.5555 Fax: 714.490.5560
Project No. 2305-163-07

REVISIONS		
27	11/22/10	CHANGE ORDER #29
28	05/09/11	CHANGE ORDER #170
29	12/19/11	CHANGE ORDER #294
30	03/28/11	CHANGE ORDER #335

APPROVAL

PROJECT NAME
CHILDREN'S HOSPITAL
OF ORANGE COUNTY
455 S. Main St.
Orange, CA 92868-3874

TOWER II

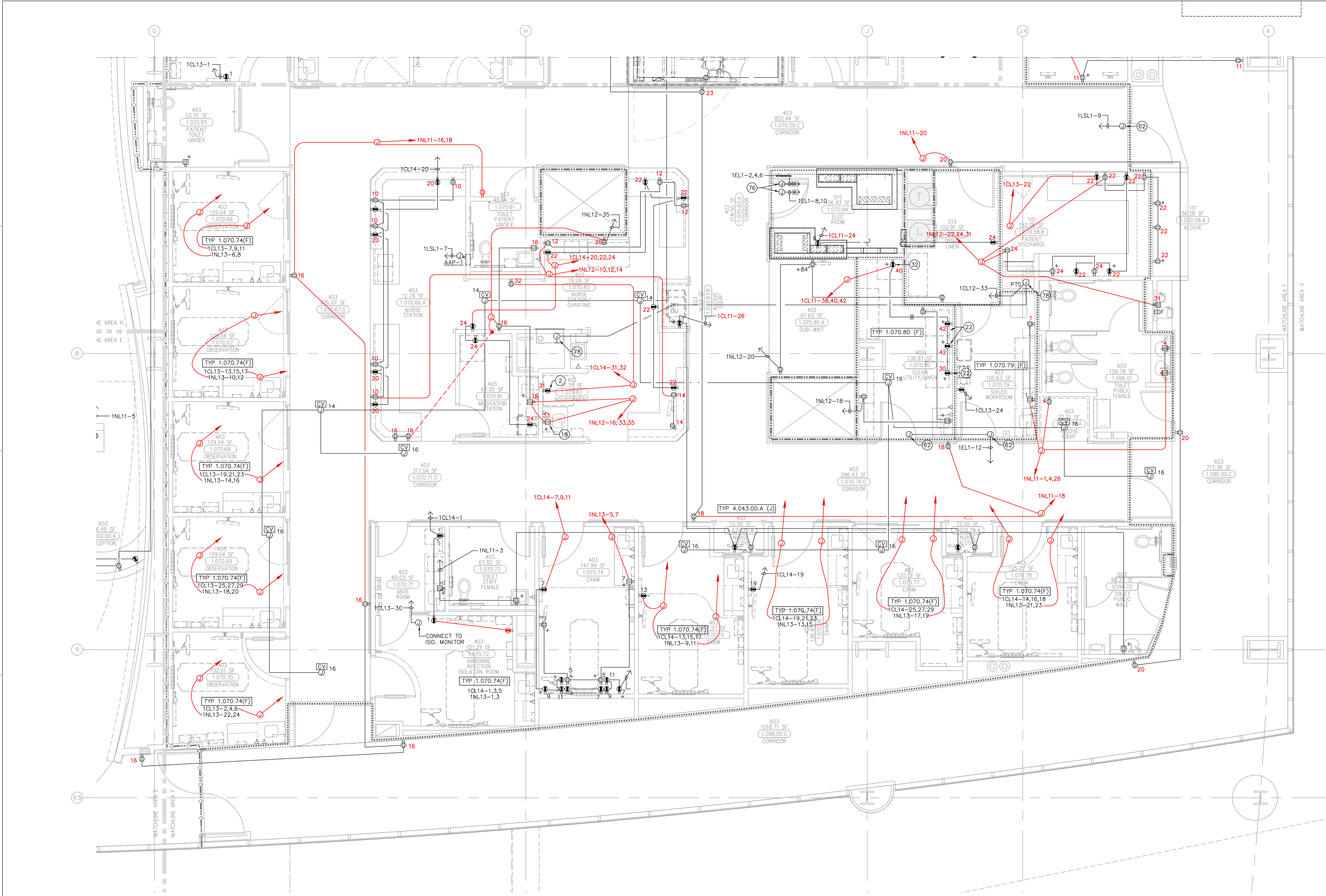


PROJECT NUMBER
12011.00
Increment #7
OSHPD - PROJECT NUMBER
IL 072072-30

ISSUE
OSHPD PERMIT
DATE
01/27/2010
SCALE
1/4" = 1'-0"
DRAWING TITLE
LEVEL 1 POWER PLAN
AREA - F

DRAWING NUMBER

EP3.1F



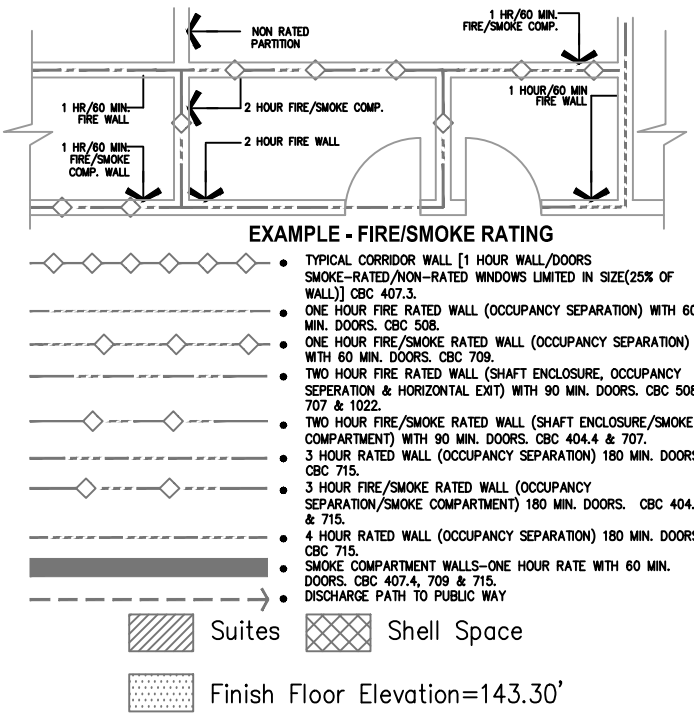
FOR KEY NOTES REFER TO SHEET "EP3A"

Bergelectric Corp. Contractors & Engineers

RECORD SET

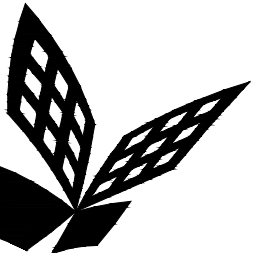
08/17/12

5550 W. Centinela Ave., Los Angeles, CA 90045, (310) 337-1377



NIC		U	
K	L	P	N
J	H	G	W
D	E	F	V
A			

A1 Key Plan
N.T.S.



FKP Architects

ARCHITECT OF RECORD

CONSULTANT

T M A D
TAYLOR
& GAINES

STRUCTURAL
MECHANICAL
ELECTRICAL
CIVIL

100 South Anaheim Boulevard, Suite 150
Anaheim, California 92805
Phone: 714.490.5555 Fax: 714.490.5560
Project No. 2305-163-07

REVISIONS

157	03/08/11	CHANGE ORDER #130
158	03/28/10	CHANGE ORDER #161
159	05/09/11	CHANGE ORDER #170
160	12/19/11	CHANGE ORDER #294
161	03/28/11	CHANGE ORDER #335

APPROVAL

PROJECT NAME

CHILDREN'S HOSPITAL
OF ORANGE COUNTY
455 S. Main St.
Orange, CA 92868-3874

TOWER II



PROJECT NUMBER

12011.00
Increment #7

OSHPD - PROJECT NUMBER
IL 072072-30

ISSUE

OSHPD PERMIT

DATE

01/27/2010

SCALE

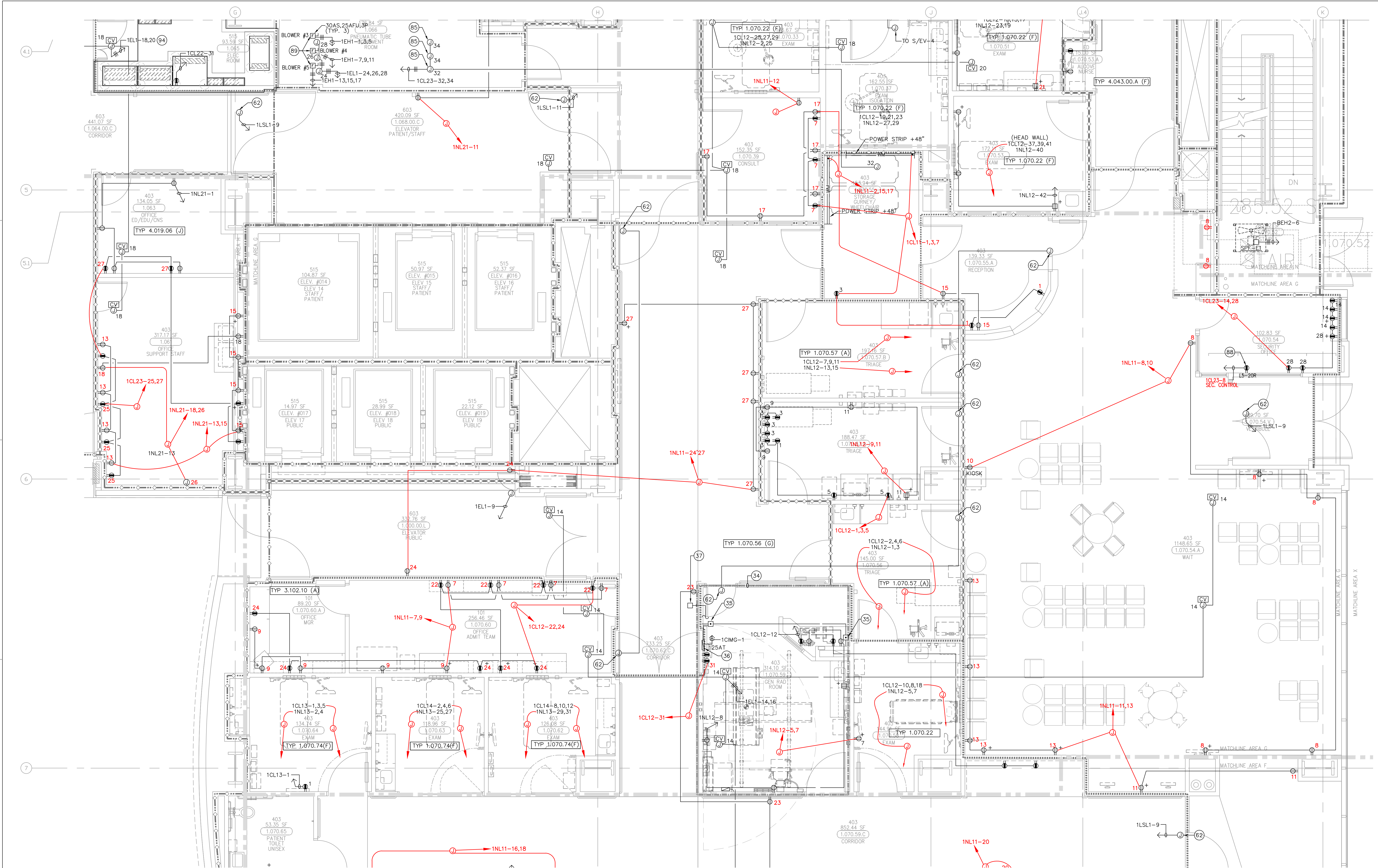
1/4" = 1'-0"

DRAWING TITLE

LEVEL 1 POWER PLAN
AREA - G

DRAWING NUMBER

EP3.1G



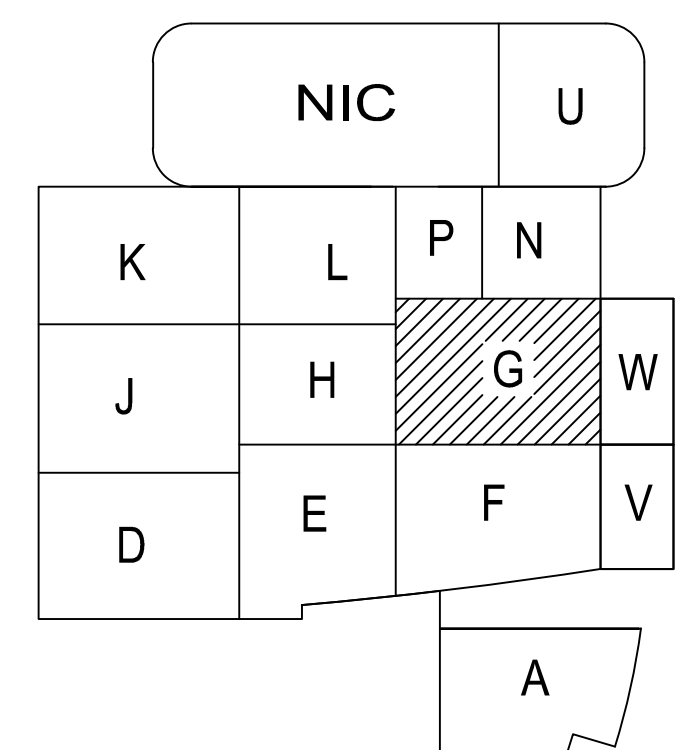
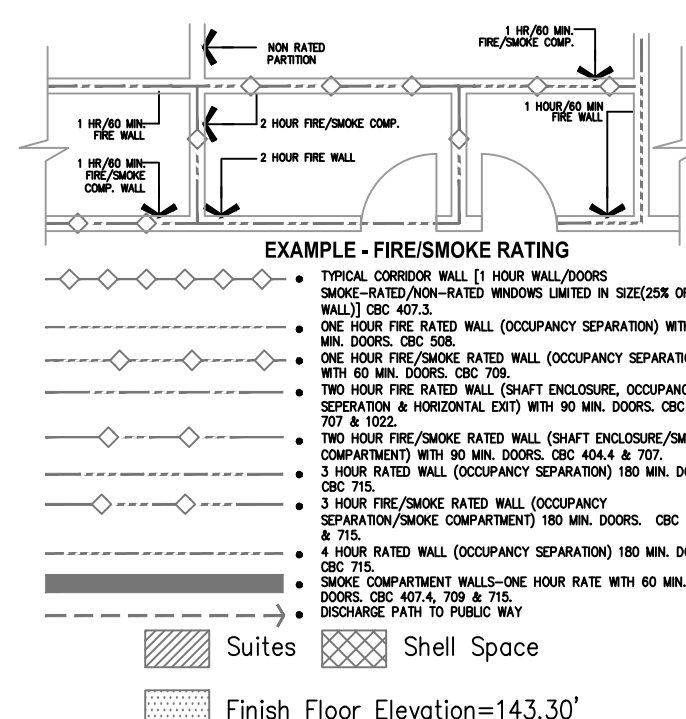
FOR KEY NOTES REFER TO SHEET "EP3A"

Berglectric Corp. Contractors & Engineers

RECORD SET

08/17/12

5650 W. Centinela Ave., Los Angeles, CA 90045, (310) 337-1377



A1 Key Plan
N.T.S.

ARCHITECT OF RECORD

CONSULTANT

T M A D
TAYLOR
& GAINES

- STRUCTURAL
- MECHANICAL
- ELECTRICAL
- CIVIL

100 South Anaheim Boulevard, Suite 150
Anaheim, California 92805
Phone: 714.490.5555 Fax: 714.490.5560
Project No. 2305-163-07

REVISIONS

897 12/19/11 CHANGE ORDER #294

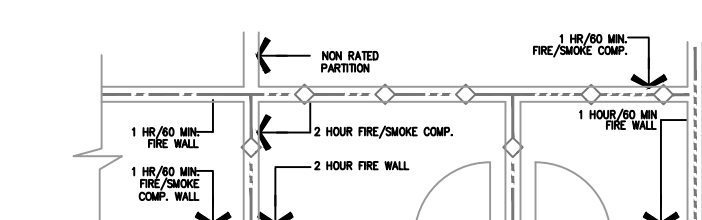
APPROVAL

Bergaelectric Corp. Contractors & Engineers

RECORD SET

08/17/12

5650 W. Centinela Ave., Los Angeles, CA 90045, (310) 337-1377



EXAMPLE - FIRES/SMOKE RATING

TYPICAL CORRIDOR WALL (1 HOUR RATED WALL)
ROOF RATED IN-PLACE ROOF (RATED IN SIZE RATING)
COR-407.3

2 HOUR FIRE RATED WALL (OCCUPANCY SEPARATION)
COR-500.0

2 HOUR FIRE RATED WALL (OCCUPANCY SEPARATION)
W/ 60 MIN. DOORS COR-700.0

2 HOUR FIRE RATED WALL (SMALL ENCLOSURE, OCCUPANCY & HORIZONTAL EXIT) W/ 60 MIN. DOORS COR-700.0 & 1000.0

2 HOUR FIRE/SMOKE RATED WALL (SMALL ENCLOSURE)
COR-700.0 W/ 60 MIN. DOORS COR-400.0 & 700.0

3 HOUR FIRE/SMOKE RATED WALL (OCCUPANCY SEPARATION)
COR-775.0


3 HOUR FIRE/SMOKE RATED WALL (OCCUPANCY SEPARATION)
COR-775.0


4 HOUR FIRE RATED WALL (OCCUPANCY SEPARATION)
COR-875.0


4 HOUR RATED WALL (OCCUPANCY SEPARATION)
COR-875.0

4 HOUR FIRE/SMOKE RATED WALL (OCCUPANCY SEPARATION)
COR-975.0 W/ 60 MIN. DOORS COR-475.0, 775.0 & 975.0

DOORS OPEN TO THE RAMP

 Suites

 Shell Space

 Finish Floor Elevation=143.30'

 Suites
  Shell Space

NIC			U
K	L	P	N
J	H	G	
D	E	F	
		A	

A1 Key Plan

PROJECT NAME
CHILDREN'S HOSPITAL
OF ORANGE COUNTY
455 S. Main St.
Orange, CA 92868-3874

TOWER II



PROJECT NUMBER

12011.00
Increment #7

OSHPD - PROJECT NUMBER
IL 072072-30

ISSUE

OSHPD PERMIT

DATE _____

01/27/2010

SCALE

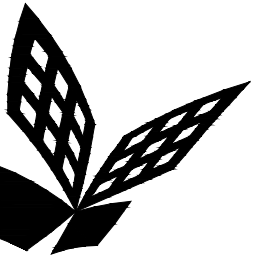
$$1/4'' = 1' - 0''$$

DRAWING TITLE

LEVEL 1 POWER PLAN
AREA - J

DRAWING NUMBER

EP3.1J



FKP Architects

ARCHITECT OF RECORD

CONSULTANT

T M A D
TAYLOR
& G AINES
100 South Anaheim Boulevard, Suite 150
Anaheim, California 92805
Phone: 714.490.5555 Fax: 714.490.5560
Project No. 2305-163-07

REVISIONS

12/19/11 CHANGE ORDER #294
01/23/12 CHANGE ORDER #272

APPROVAL

PROJECT NAME
CHILDREN'S HOSPITAL
OF ORANGE COUNTY
455 S. Main St.
Orange, CA 92868-3874

TOWER II



PROJECT NUMBER

12011.00
Increment #7

OSHPD - PROJECT NUMBER
IL 072072-30

ISSUE

OSHPD PERMIT

DATE

01/27/2010

SCALE

1/4"=1'-0"

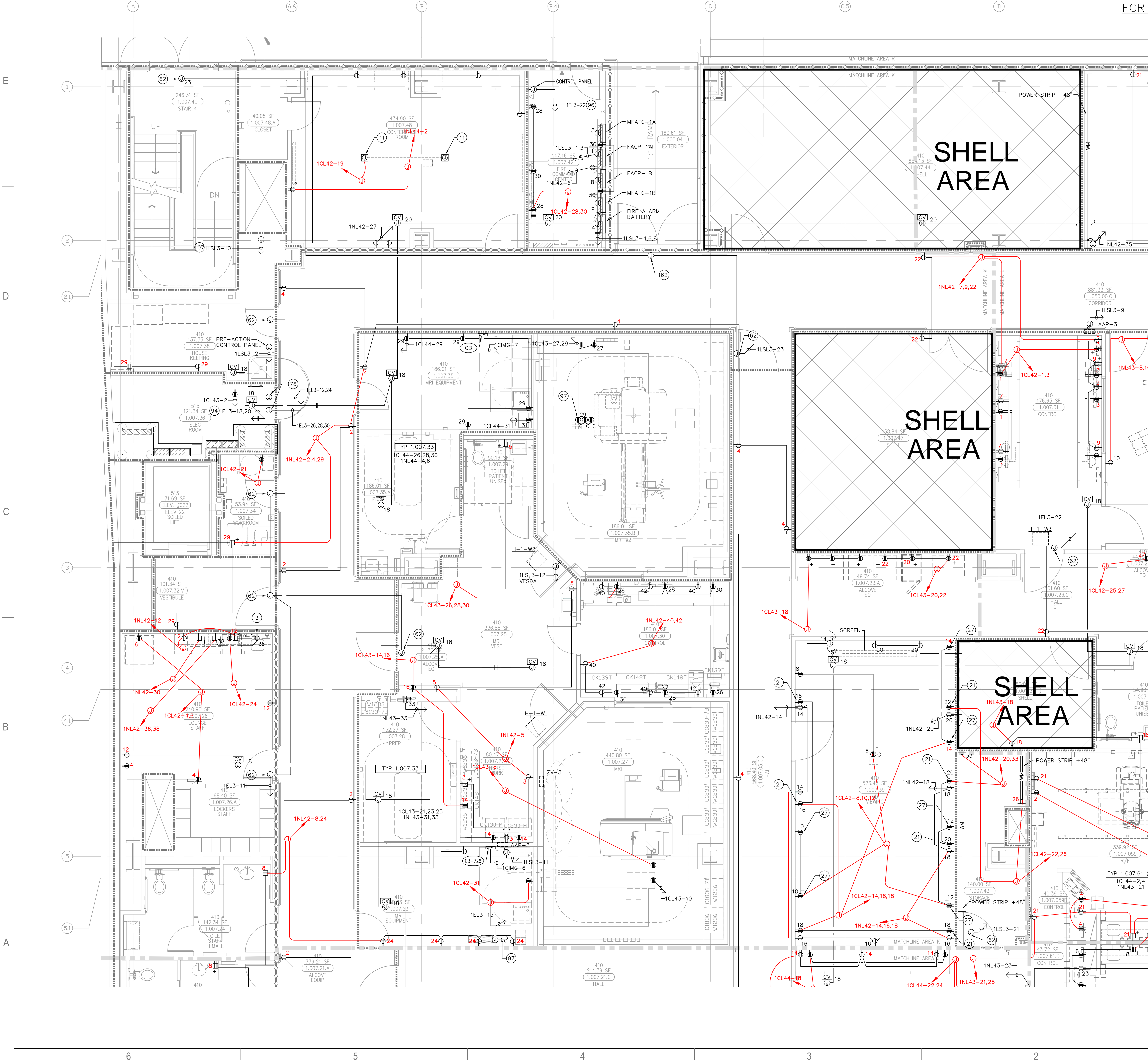
DRAWING TITLE

LEVEL 1 POWER PLAN
AREA - K

DRAWING NUMBER

EP3.1K

FOR KEY NOTES REFER TO SHEET "EP3A"

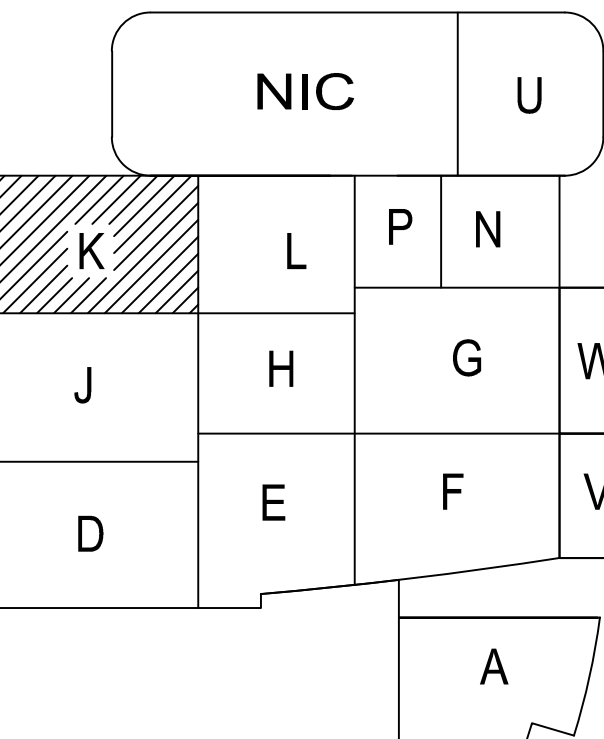
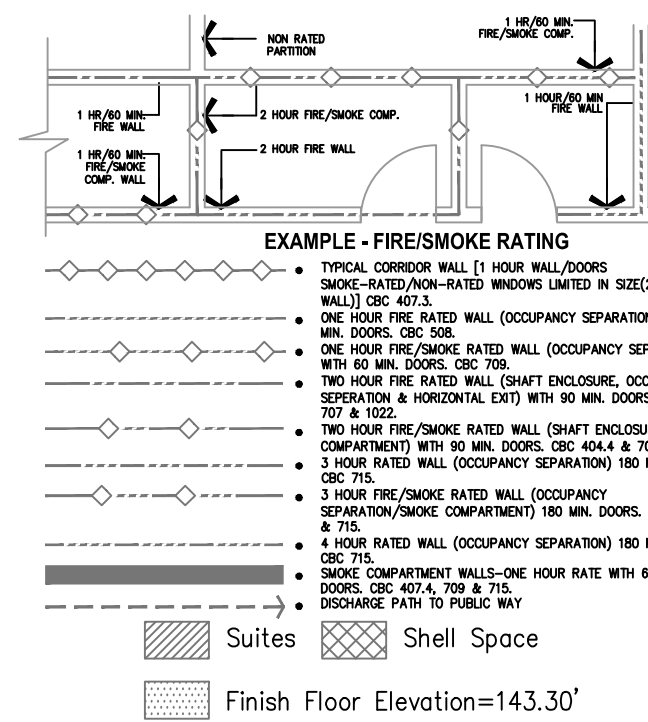


Bergelectric Corp. Contractors & Engineers

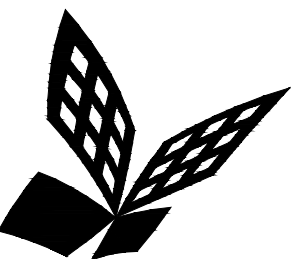
RECORD SET

08/17/12

5600 W. Centinela Ave., Los Angeles, CA 90045, (310) 337-1377



A1 Key Plan
N.T.S.



FKP Architects

ARCHITECT OF RECORD

CONSULTANT

T M A D
TAYLOR
& G AINES

- STRUCTURAL
- MECHANICAL
- ELECTRICAL
- CIVIL

100 South Anaheim Boulevard, Suite 150
Anaheim, California 92805
Phone: 714.490.5555 Fax: 714.490.5560
Project No. 2305-163-07

REVISIONS

18	05/09/11	CHANGE ORDER #170
897	12/19/11	CHANGE ORDER #294

APPROVAL

Bergelectric Corp. Contractors & Engineers

RECORD SET

08/17/12

5650 W. Centinela Ave., Los Angeles, CA 90045, (310) 357-1377

PROJECT NAME

**CHILDREN'S HOSPITAL
OF ORANGE COUNTY**
455 S. Main St.
Orange, CA 92668-3874

TOWER II



PROJECT NUMBER

**12011.00
Increment #7**

OSHPD - PROJECT NUMBER

IL 072072-30

ISSUE

OSHPD PERMIT

DATE

01/27/2010

SCALE

1/4" = 1'-0"

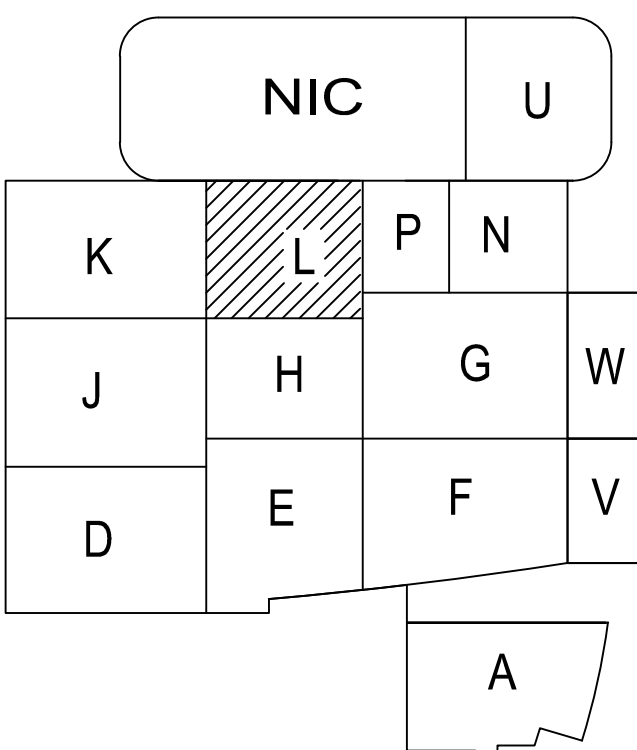
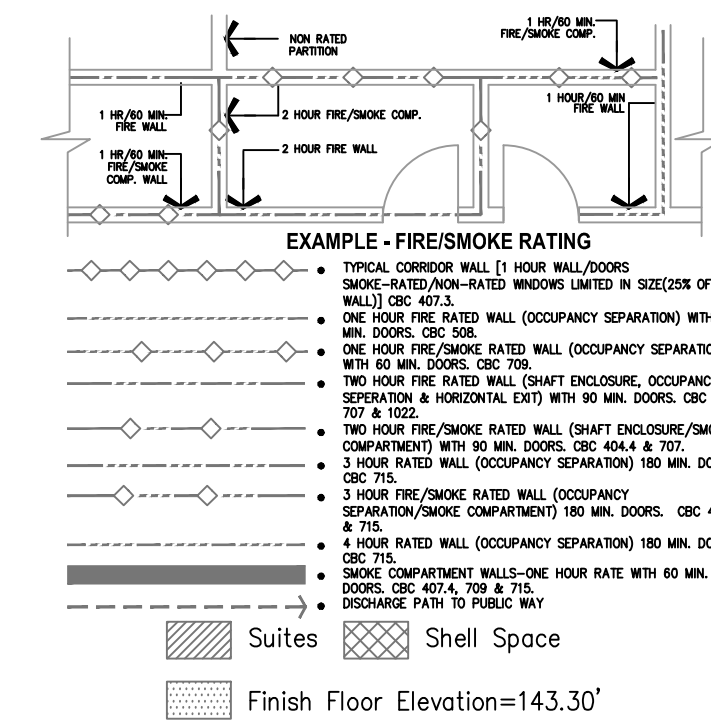
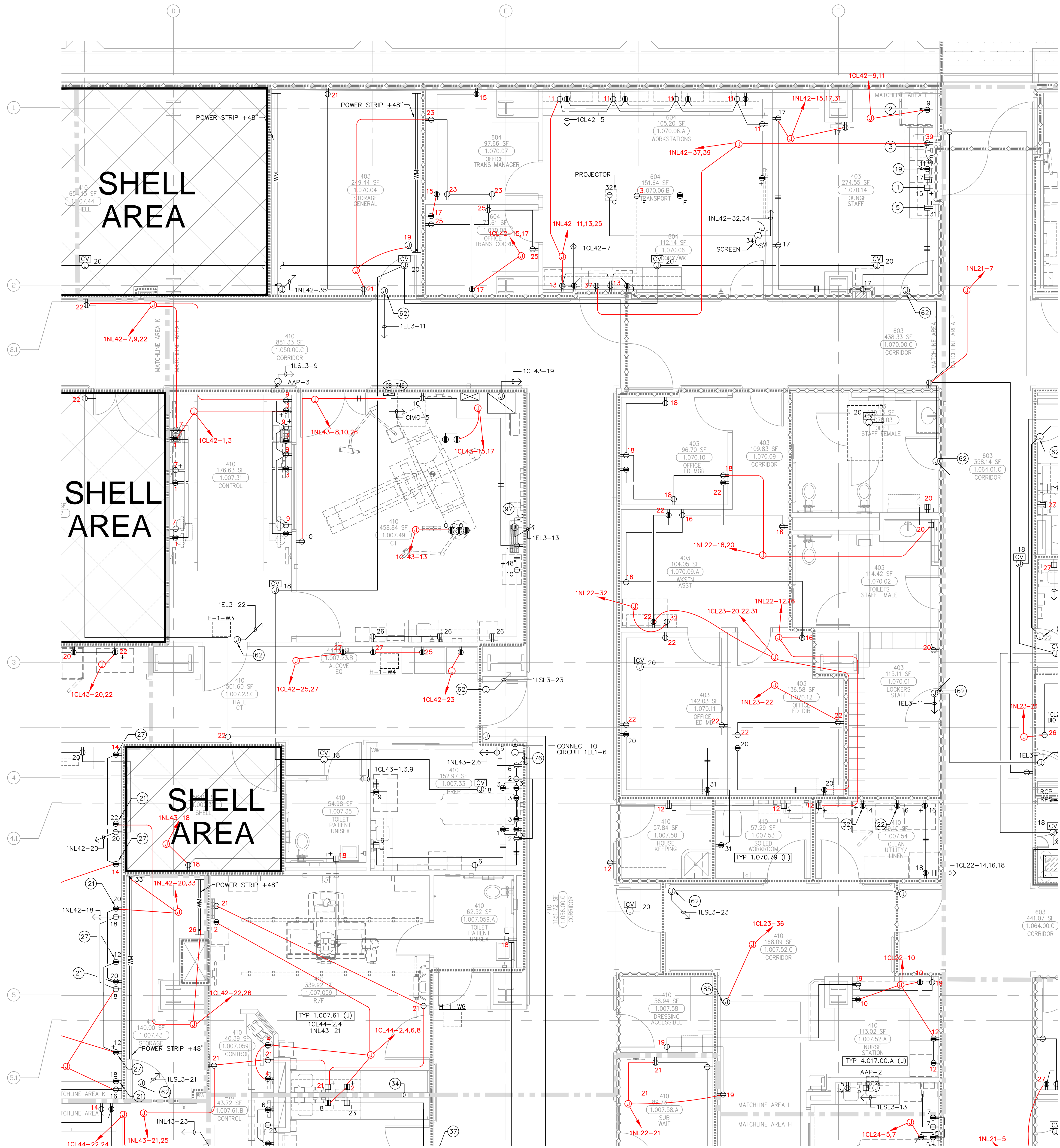
DRAWING TITLE

**LEVEL 1 POWER PLAN
AREA - L**

DRAWING NUMBER

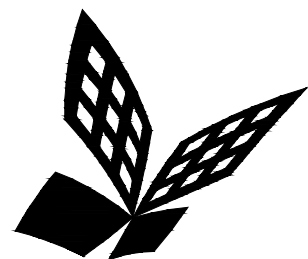
EP3.1L

FOR KEY NOTES REFER TO SHEET "EP3A"



A1 Key Plan
N.T.S.

FOR KEY NOTES REFER TO SHEET "EP3A"



FKP Architects

ARCHITECT OF RECORD

CONSULTANT

T M A D
TAYLOR
& G AINES
100 South Anaheim Boulevard, Suite 150
Anaheim, California 92805
Phone: 714.490.5555 Fax: 714.490.5560
Project No. 2305-163-07

REVISIONS

	02/05/10	INFORMATION BULLETIN #5
44	05/28/10	A.S.I. #8
27	11/22/10	CHANGE ORDER #29
89	12/19/11	CHANGE ORDER #284

APPROVAL

Bergelectric Corp. Contractors & Engineers

RECORD SET

08/17/12

#C10-85546

5650 W. Centinela Ave., Los Angeles, CA 90045, (310) 337-1377

PROJECT NAME

CHILDREN'S HOSPITAL
OF ORANGE COUNTY
455 S. Main St.
Orange, CA 92668-3874

TOWER II



PROJECT NUMBER

12011.00
Increment #7

OSHPD - PROJECT NUMBER

IL 072072-30

ISSUE

OSHPD PERMIT

DATE

01/27/2010

SCALE

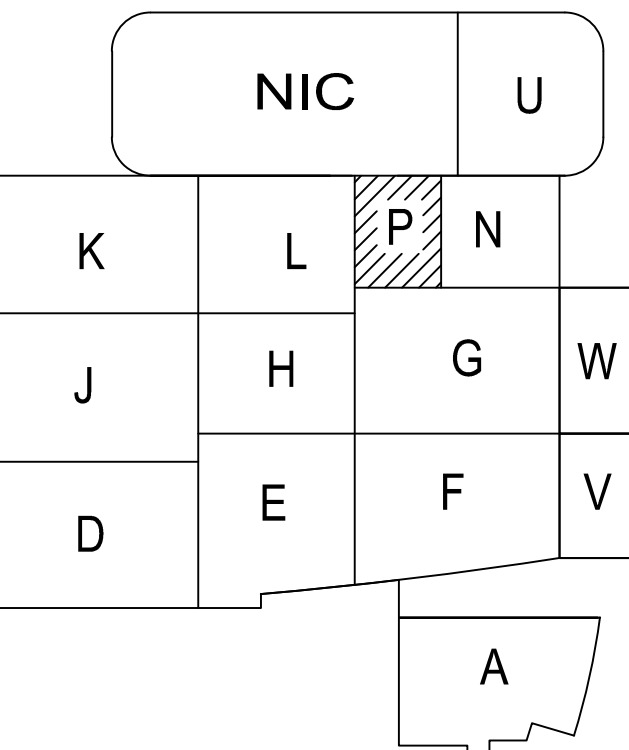
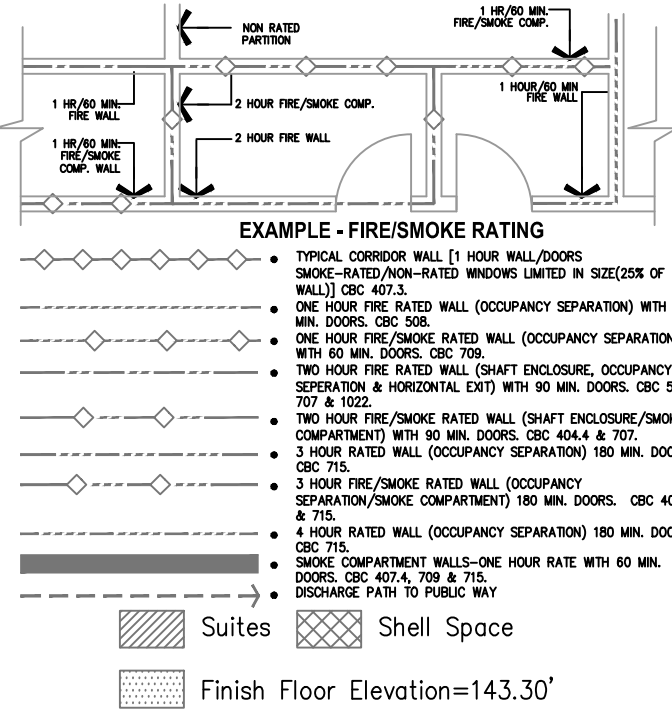
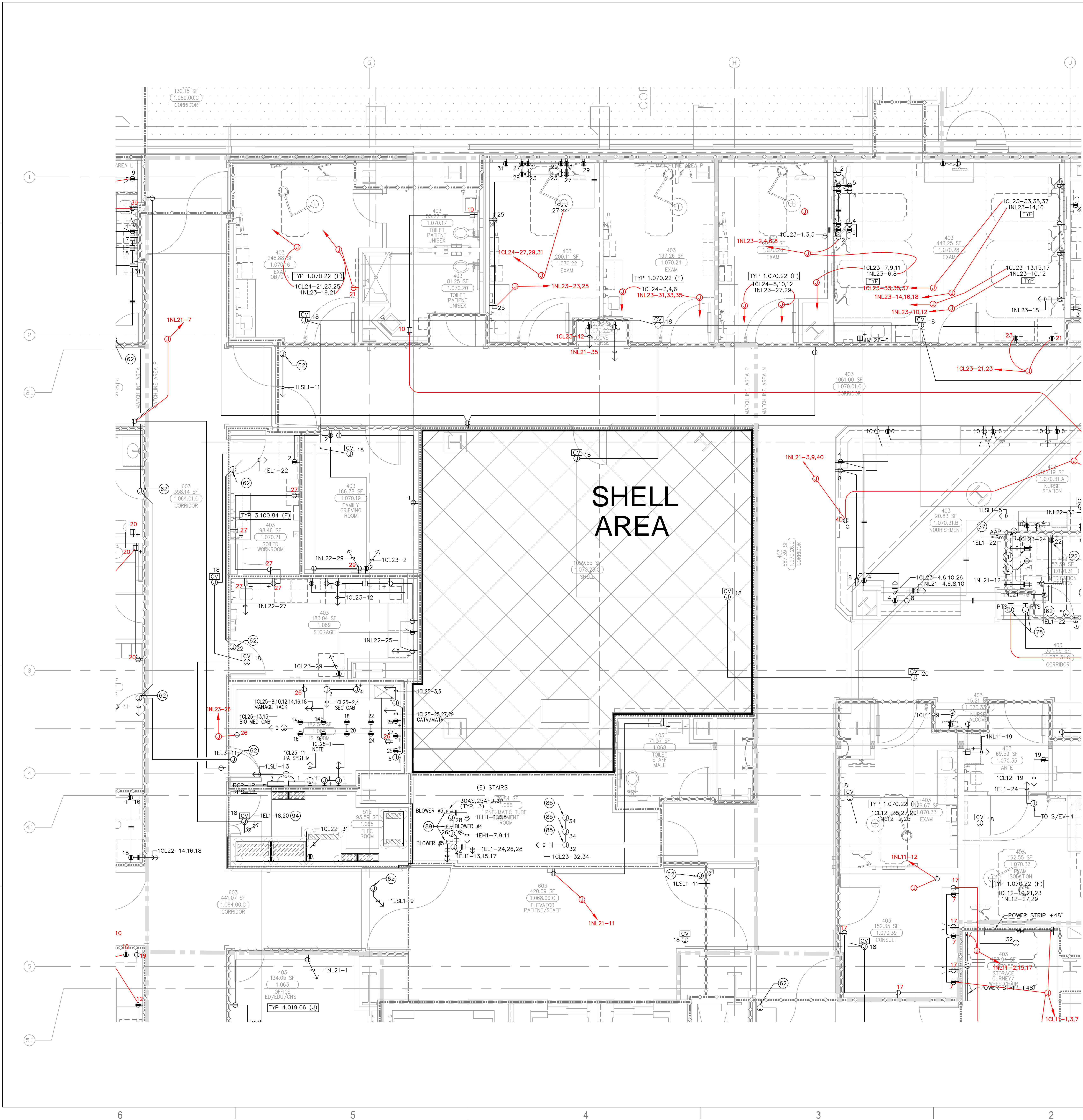
1/4" = 1' 0"

DRAWING TITLE

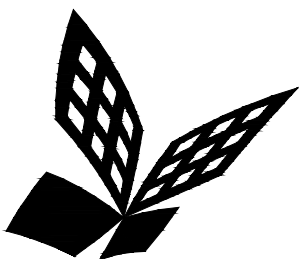
LEVEL 1 POWER PLAN
AREA - P

DRAWING NUMBER

EP3.1P



A1 Key Plan
N.T.S.



FKP Architects

ARCHITECT OF RECORD

CONSULTANT

T M A D
TAYLOR
& G AINES

- STRUCTURAL
- MECHANICAL
- ELECTRICAL
- CIVIL

100 South Anaheim Boulevard, Suite 150
Anaheim, California 92805
Phone: 714.490.5555 Fax: 714.490.5560
Project No. 2305-163-07

REVISIONS

APPROVAL

PROJECT NAME

**CHILDREN'S HOSPITAL
OF ORANGE COUNTY**
455 S. Main St.
Orange, CA 92868-3874

TOWER II



PROJECT NUMBER

**12011.00
Increment #7**

OSHPD - PROJECT NUMBER
IL 072072-30

ISSUE

OSHPD PERMIT

DATE

01/27/2010

SCALE

1/4" = 1'-0"

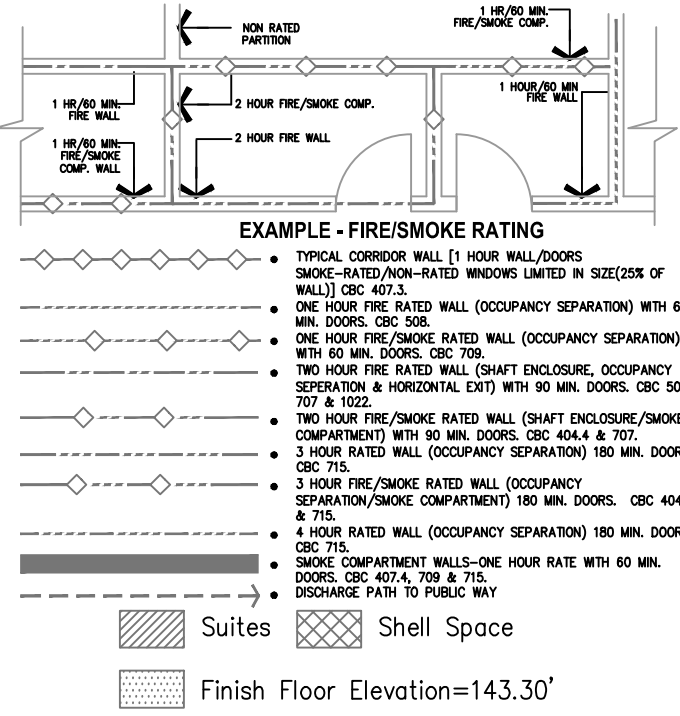
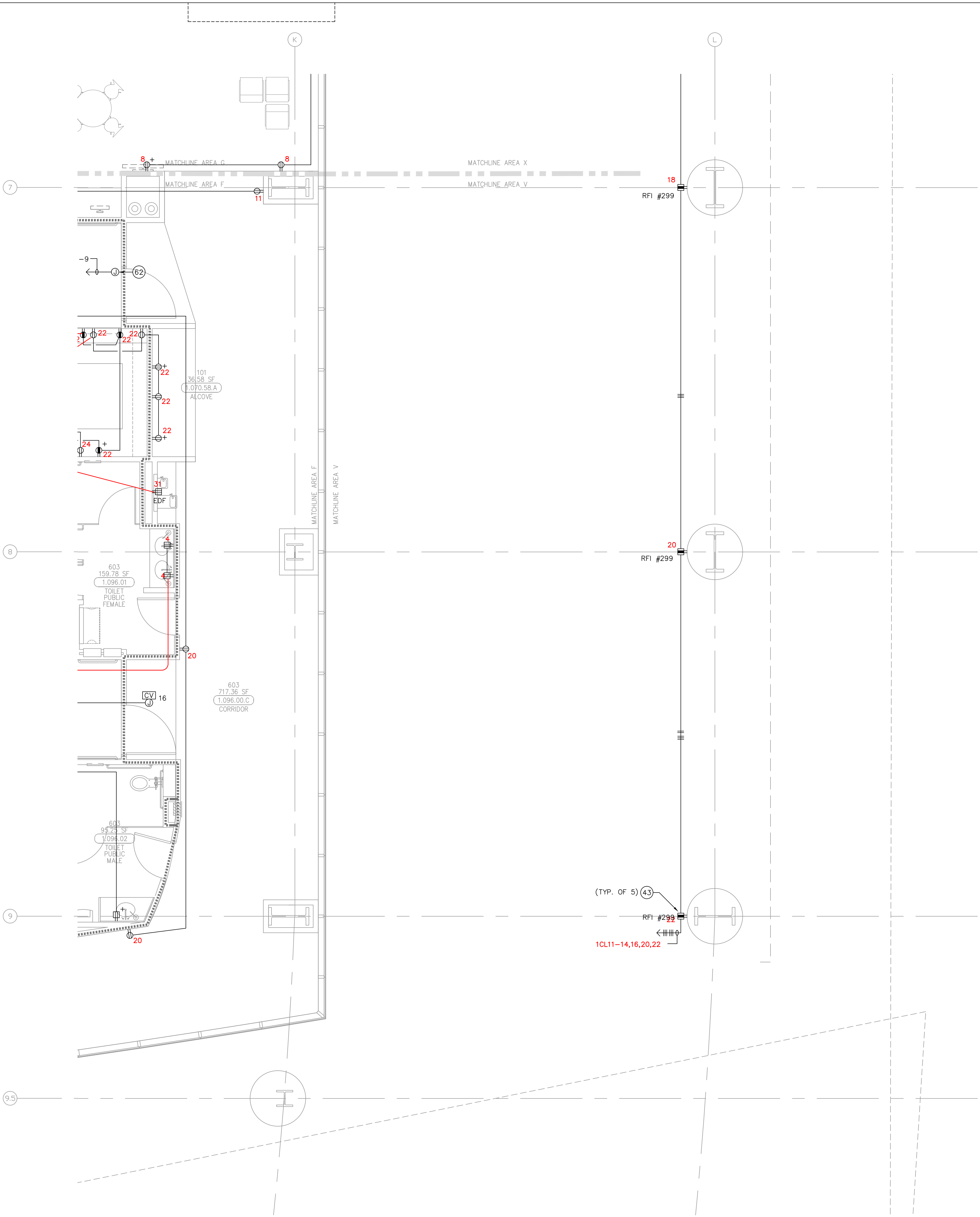
DRAWING TITLE

**LEVEL 1 POWER PLAN
AREA - V**

DRAWING NUMBER

EP3.1V

FOR KEY NOTES REFER TO SHEET "EP3A"



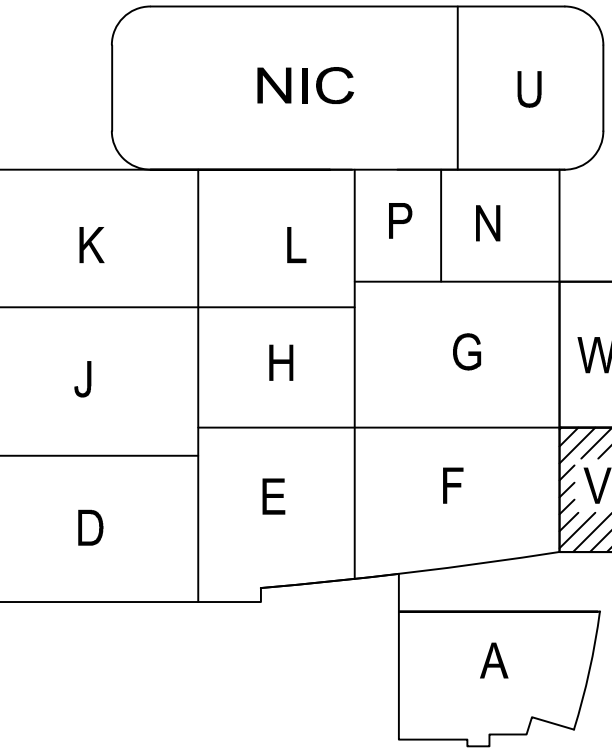
Bergelectric Corp. Contractors & Engineers

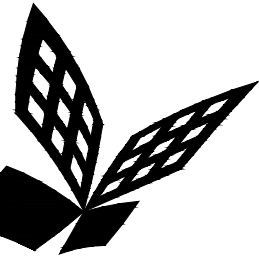
RECORD SET

08/17/12

5650 W. Centinela Ave., Los Angeles, CA 90045, (310) 357-1377

A1 Key Plan
N.T.S.





FKP Architects

ARCHITECT OF RECORD

CONSULTANT

T M A D
TAYLOR
& G AINES

- STRUCTURAL
- MECHANICAL
- ELECTRICAL
- CIVIL

100 South Anaheim Boulevard, Suite 150
Anaheim, California 92805
Phone: 714.490.5555 Fax: 714.490.5560
Project No. 2305-163-07

REVISIONS

APPROVAL

PROJECT NAME

**CHILDREN'S HOSPITAL
OF ORANGE COUNTY**
455 S. Main St.
Orange, CA 92868-3874

TOWER II



PROJECT NUMBER

**12011.00
Increment #7**

OSHPD - PROJECT NUMBER
IL 072072-30

ISSUE

OSHPD PERMIT

DATE

01/27/2010

SCALE

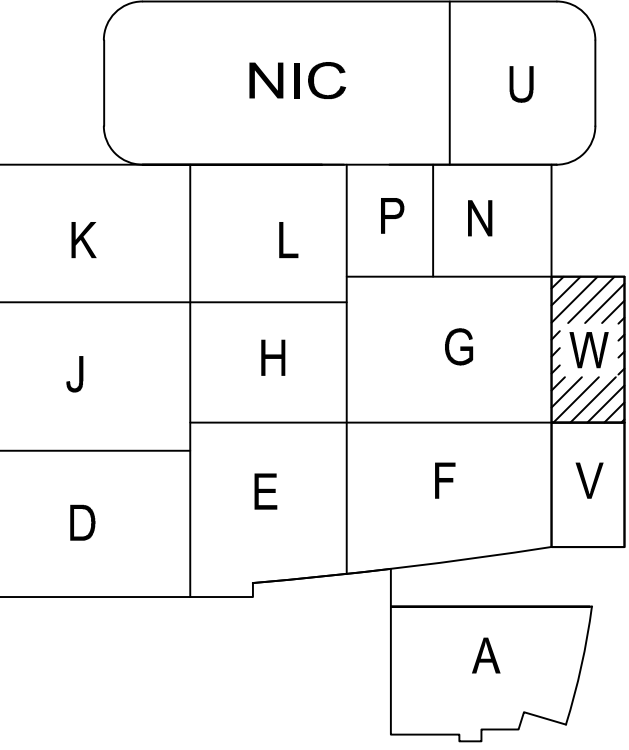
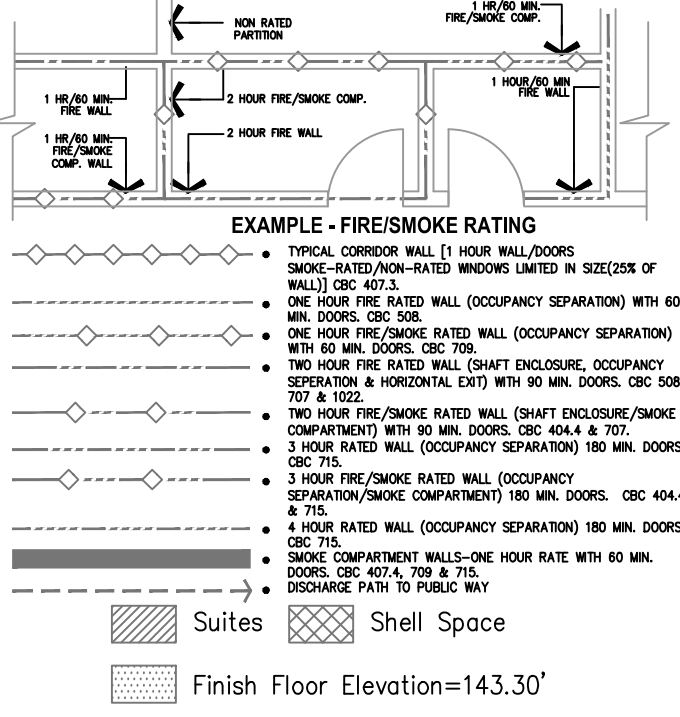
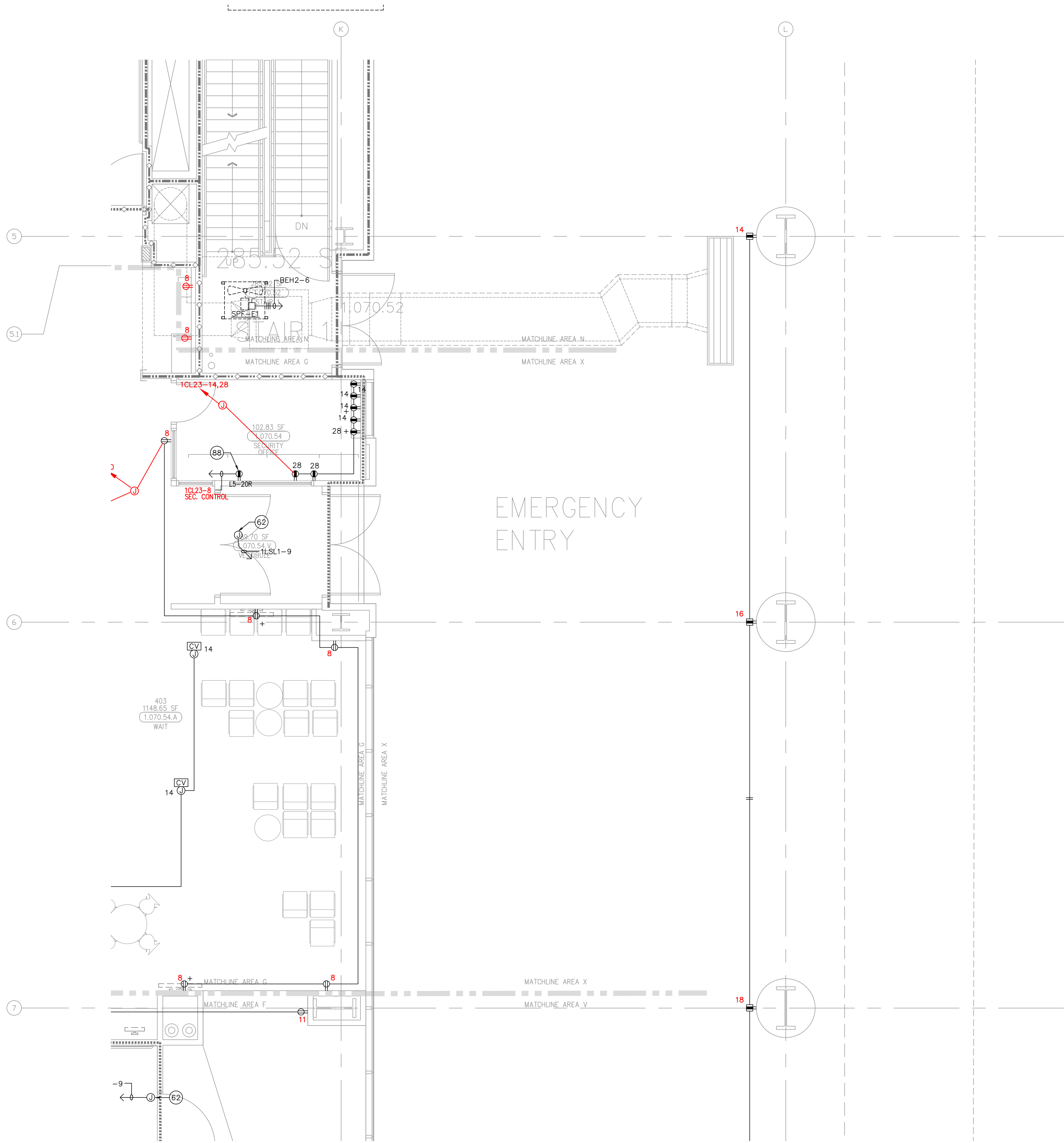
1/4" = 1'- 0"

DRAWING TITLE

**LEVEL 1 POWER PLAN
AREA - W**

DRAWING NUMBER

EP3.1W



(A1) Key Plan
N.T.S.

FOR KEY NOTES REFER TO SHEET "EP3A"

Bergelectric Corp. Contractors & Engineers

RECORD SET

08/17/12

5650 W. Centinela Ave., Los Angeles, CA 90045, (310) 357-1377

#310-#85046

(310) 357-1377