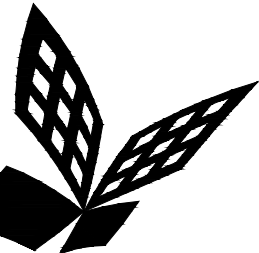


5650 W. Centinela Ave., Los Angeles, CA 90045, (310) 337-1377

A1 Key Plan
N.T.S.



FKP Architects

ARCHITECT OF RECORD

CONSULTANT

T M A D
TAYLOR
& G AINES

- STRUCTURAL
- MECHANICAL
- ELECTRICAL
- CIVIL

100 South Anaheim Boulevard, Suite 150
Anaheim, California 92805
Phone: 714.490.5555 Fax: 714.490.5560
Project No. 2305-163-07

REVISIONS

897 12/19/11 CHANGE ORDER #294

APPROVAL

PROJECT NAME

**CHILDREN'S HOSPITAL
OF ORANGE COUNTY**
455 S. Main St.
Orange, CA 92868-3874

TOWER II



PROJECT NUMBER

**12011.00
Increment #7**

OSHPD - PROJECT NUMBER

IL 072072-30

ISSUE

OSHPD PERMIT

DATE

01/27/2010

SCALE

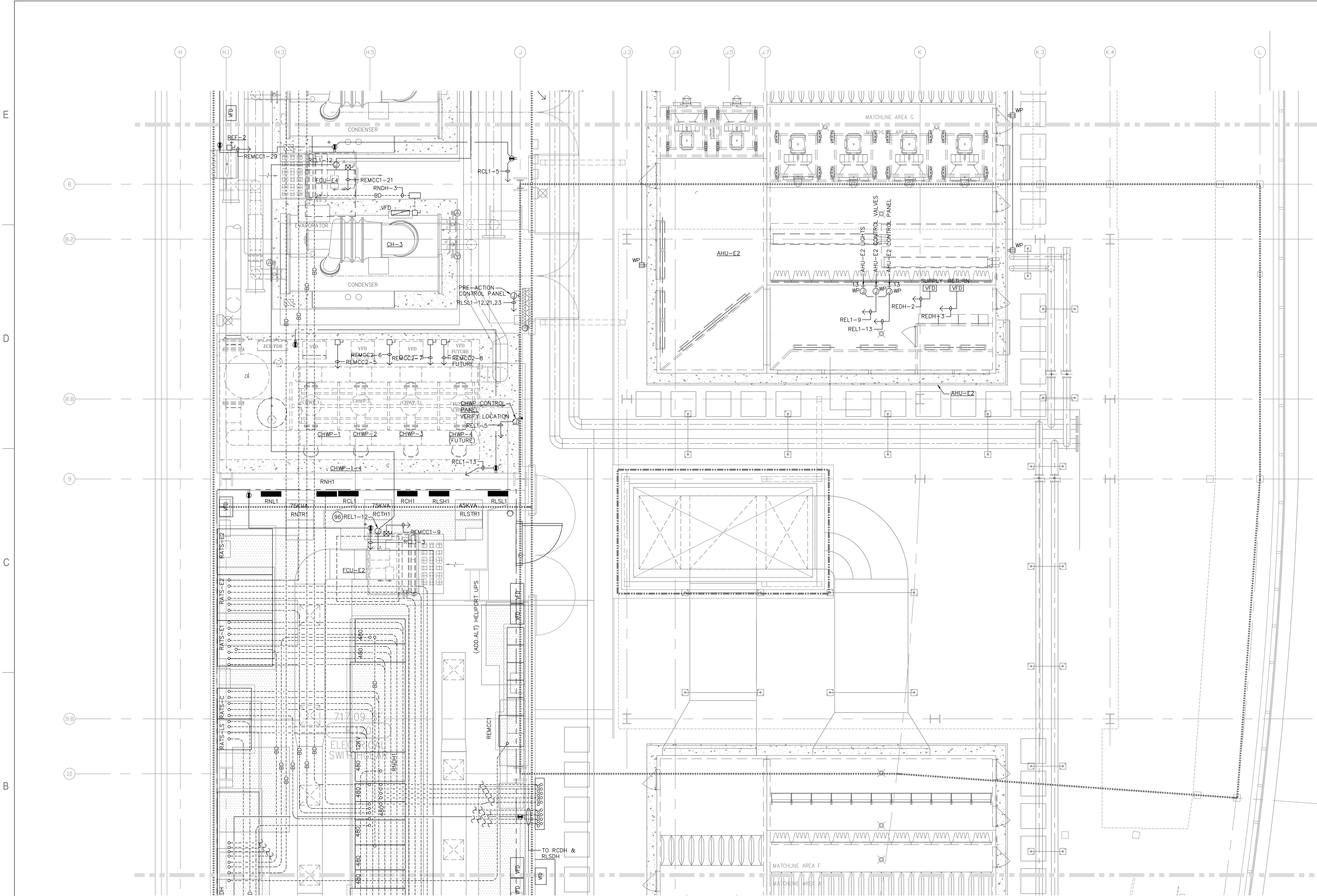
1/4" = 1' - 0"

DRAWING TITLE

**PENTHOUSE 1 POWER
PLAN AREA - F**

DRAWING NUMBER

EP3.8F



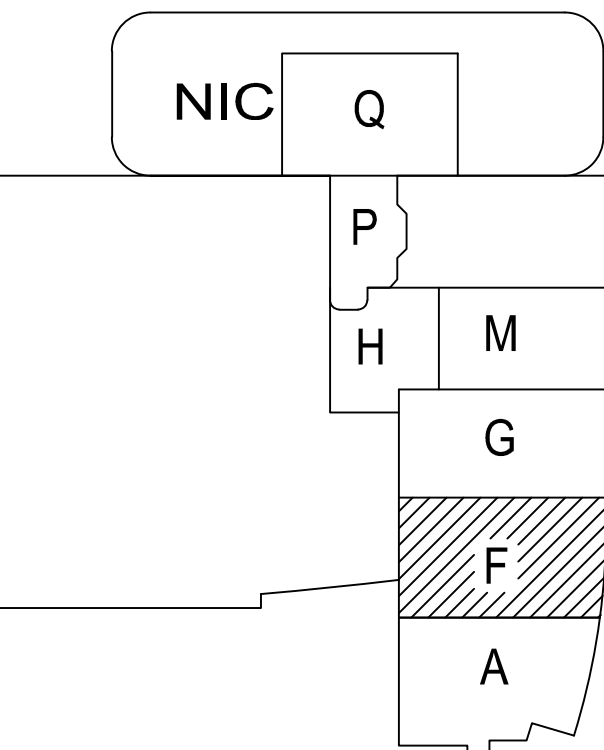
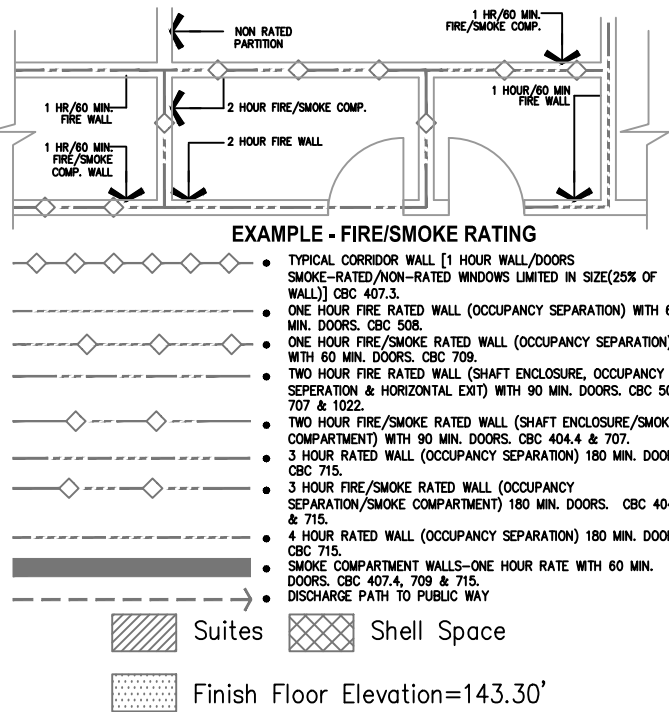
FOR KEY NOTES REFER TO SHEET "EP3A"

Bergelectric Corp. Contractors & Engineers

RECORD SET

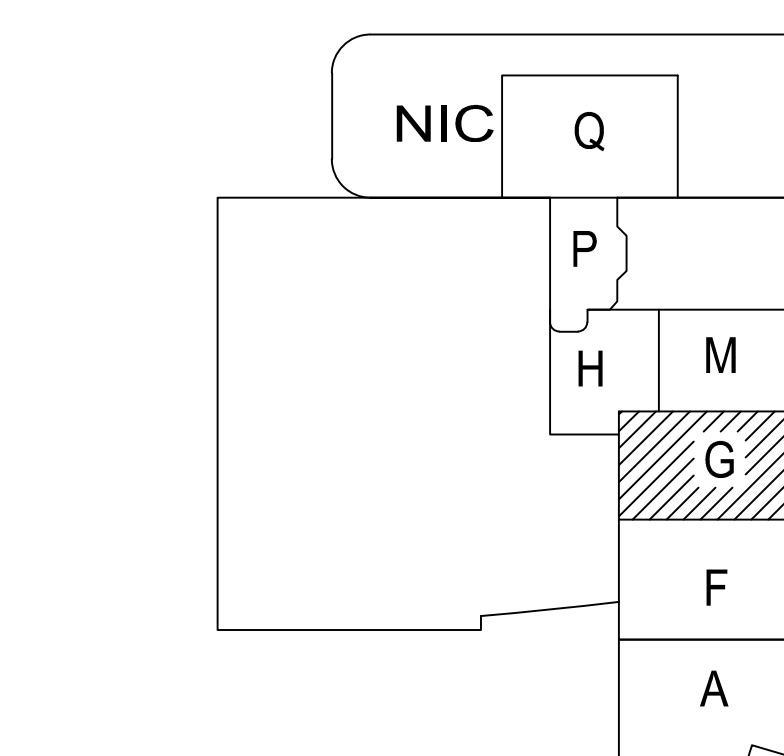
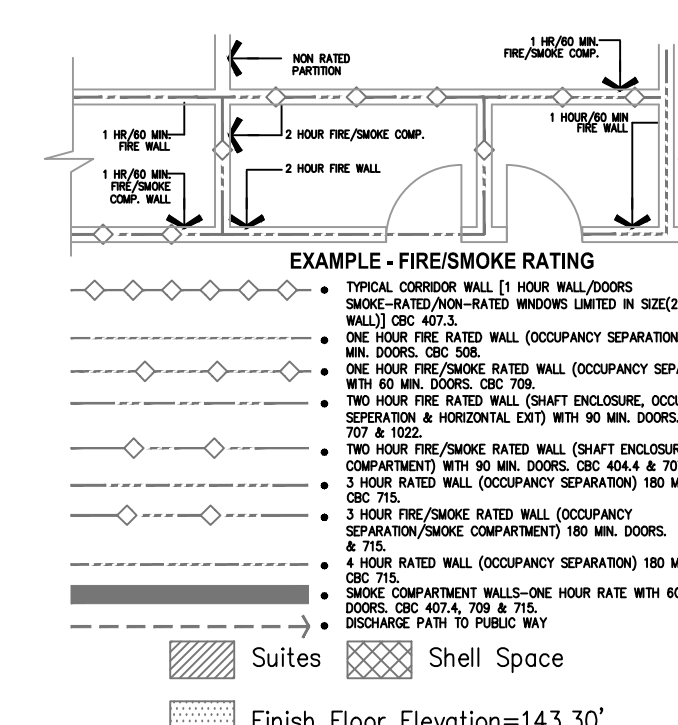
08/17/12

8500 W. Centinela Ave., Los Angeles, CA 90045, (310) 337-1377

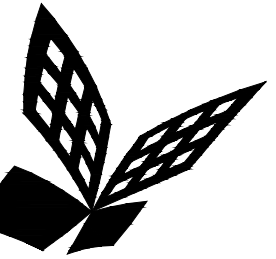


A1 Key Plan
N.T.S.

EP3.8G



A1 Key Plan



FKP Architects

ARCHITECT OF RECORD

CONSULTANT

T M A D
TAYLOR
& G AINES

- STRUCTURAL
- MECHANICAL
- ELECTRICAL
- CIVIL

100 South Anaheim Boulevard, Suite 150
Anaheim, California 92805
Phone: 714.490.5555 Fax: 714.490.5560
Project No. 2305-163-07

REVISIONS

897 12/19/11 CHANGE ORDER #294

APPROVAL

PROJECT NAME

**CHILDREN'S HOSPITAL
OF ORANGE COUNTY**
455 S. Main St.
Orange, CA 92868-3874

TOWER II



PROJECT NUMBER

**12011.00
Increment #7**

OSHPD - PROJECT NUMBER

IL 072072-30

ISSUE

OSHPD PERMIT

DATE

01/27/2010

SCALE

1/4" = 1' - 0"

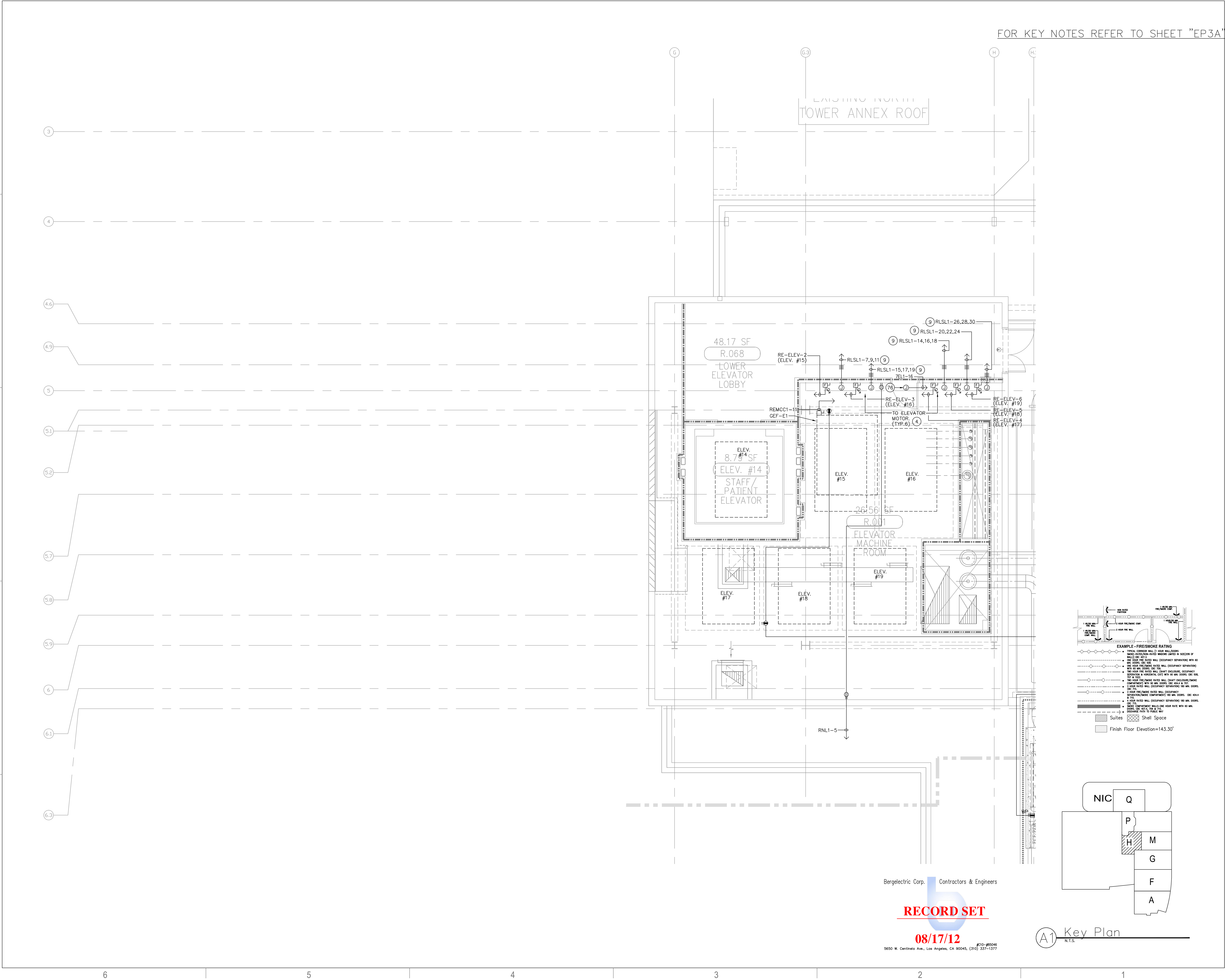
DRAWING TITLE

**PENTHOUSE 1 POWER
PLAN AREA - H**

DRAWING NUMBER

EP3.8H

FOR KEY NOTES REFER TO SHEET "EP3A"



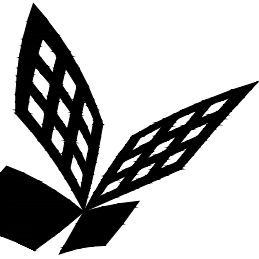
Bergelectric Corp. Contractors & Engineers

RECORD SET

08/17/12

#C10-#85046
5650 W. Centinela Ave., Los Angeles, CA 90045, (310) 337-1377

A1 Key Plan
N.T.S.



FKP Architects

ARCHITECT OF RECORD

CONSULTANT

T M A D
TAYLOR
& G AINES

- STRUCTURAL
- MECHANICAL
- ELECTRICAL
- CIVIL

100 South Anaheim Boulevard, Suite 150
Anaheim, California 92805
Phone: 714.490.5555 Fax: 714.490.5560
Project No. 2305-163-07

REVISIONS

Z	06/14/10	CHANGE ORDER #11
A	02/24/10	CHANGE ORDER #141

APPROVAL

PROJECT NAME

**CHILDREN'S HOSPITAL
OF ORANGE COUNTY**
455 S. Main St.
Orange, CA 92668-3874

TOWER II



PROJECT NUMBER

**12011.00
Increment #7**

OSHPD - PROJECT NUMBER
IL 072072-30

ISSUE

OSHPD PERMIT

DATE

01/27/2010

SCALE

1/4" = 1' - 0"

DRAWING TITLE

**PENTHOUSE 1 POWER PLAN
AREA - M**

DRAWING NUMBER

EP3.8M

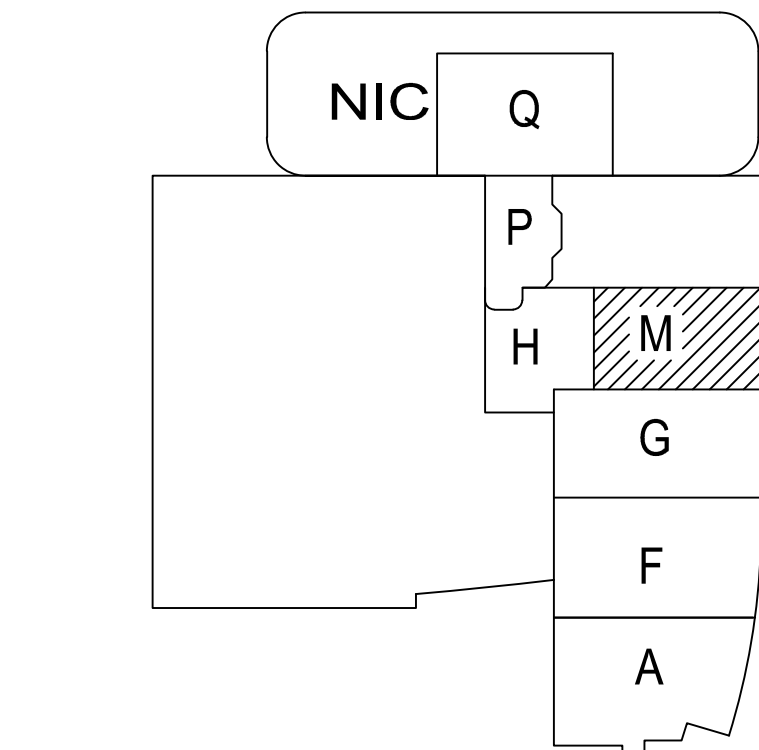
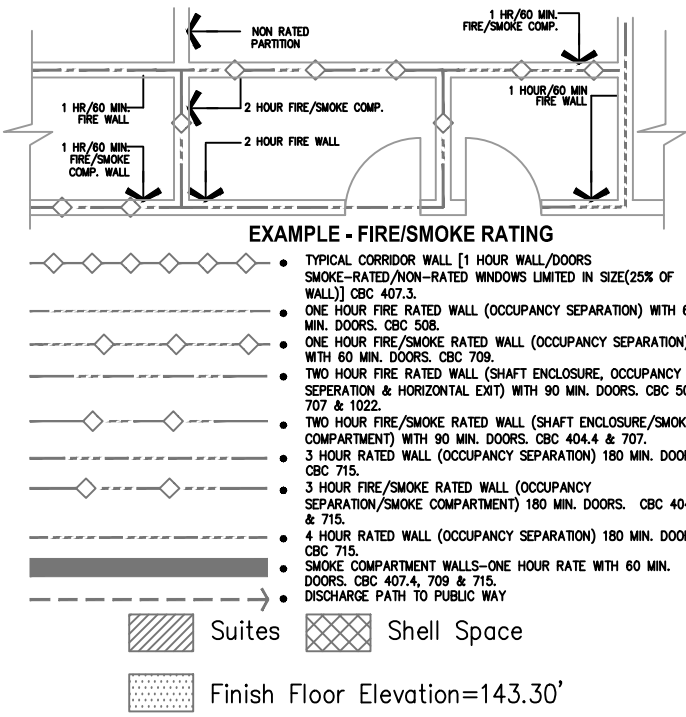
FOR KEY NOTES REFER TO SHEET "EP3A"

Bergelectric Corp. Contractors & Engineers

RECORD SET

08/17/12

810-85046
5650 W. Centinela Ave., Los Angeles, CA 90045, (310) 337-1377



A1 Key Plan
N.T.S.