

SIEMENS

CALIFORNIA STATE CONTRACTORS
LICENSE NO.: #758796 - B/ C10/ C16/ C20

Siemens Building Technologies, Inc.
FIS FIRE/LIFE SAFETY DIVISION
10775 Business Center Drive
Cypress, California 90630 USA
Phone: (714) 761-2200
Fax: (714) 220-4956

This drawing and the information and design application herein contained is the property of SIEMENS BUILDING TECHNOLOGIES, Inc. and is loaned upon the express condition that the same be returned to SIEMENS BUILDING TECHNOLOGIES, Inc. upon request; all information herein contained shall be treated as secret and confidential; no reproduction of this drawing or part thereof shall be made without the written consent of SIEMENS BUILDING TECHNOLOGIES, Incorporated.



BUILDING ELECTRONIC CONTROLS, INC.
2246 Lindsay Way
Glendora, CA 91740
PHONE: (909) 305-1600
FAX #: (909) 305-1604
LICENSE NO.: 729905
CLASSIFICATION: C1, C-7, C10
EXPIRATION DATE: 11/30/2012
RICHARD TAYLOR



- NOTES:
- ① INTERFACE TO PATIENT ROOM BONE LIGHT, DOME LIGHT & POWER SHALL BE FURNISHED AND INSTALLED BY OTHERS.
 - ② NOT USED
 - ③ INTERFACE TO VEN DOOR / ROLL-DOWN DOOR / SHUTTER FOR RELEASE EQUIPMENT & POWER SHALL BE FURNISHED AND INSTALLED BY OTHERS.
 - ④ INTERFACE FOR MONITORING STATUS OF EQUIPMENT.
 - ⑤ SYNCHRONIZING CONFIGURATION OF ALL PAD PANELS.
 - ⑥ GFI/ACTIVATION & MONITORING / GFI/RS MONITORING FOR PAD PANELS.
 - ⑦ INTERFACE FOR RELEASE OF MAGNETIC DOOR HOLD OPEN DEVICES.
 - ⑧ INTERFACE FOR RELEASE OF COMBINATION SMOKE FIRE DAMPER CIRCUITS (EXCLUDING ISOLATION ROOMS).
 - ⑨ INTERFACE FOR ELEVATOR RECALL (PRIMARY)
 - ⑩ INTERFACE FOR ELEVATOR RECALL (ALT-RECALL)
 - ⑪ INTERFACE FOR ELEVATOR SHUNT TRIP
 - ⑫ INTERFACE FOR ELEVATOR SHUNT TRIP (BATTERY)
 - ⑬ INTERFACE FOR ELEVATOR CAB LIGHT (STEADY)
 - ⑭ INTERFACE FOR ELEVATOR CAB LIGHT (FLASHING)
 - ⑮ INTERFACE FOR RELEASE OF COMBINATION SMOKE FIRE DAMPER CIRCUITS FOR ISOLATION ROOMS ONLY.
 - ⑯ INTERFACE FOR HVAC SHUTDOWN
 - ⑰ INTERFACE FOR MONITORING OF DISCONNECT SWITCH
 - ⑱ MONITOR MODULE TO MONITOR ASPIRATING SMOKE DETECTION PANEL.
-FIRE 2
-FIRE 1
-TROUBLE
 - ⑲ CONTROL RELAY (GTRI-R) IS PROVIDED FOR ASPIRATING SMOKE DETECTION PANEL RESET
 - ⑳ MONITOR MODULES TO MONITOR PREACTION PANEL
-ALARM
-SUPERVISORY
-TROUBLE
 - ㉑ PROVIDE 120V AC, 200 AMP'S DEDICATED CIRCUIT FOR THE POWER SUPPLY
 - ㉒ CONTROL RELAY (GTRI-R) IS PROVIDED FOR DIMMER CONTROLS ACTIVATION

☐ MXL ☐ VOICE ☐ XL3 ☐ SYSTEM3
☒ XLS ☐ FS-250 ☐ EST3 ☐ OTHER

OSHPD NO. #: IL-072072-30

Rev No.	Date	Remarks	Initial
1	07/20/12	DESIGN REVISION	
2	11/21/11	DESIGN REVISION	
3	07/21/11	DESIGN REVISION	
4	05/02/11	FULLERTON FIRE DEPARTMENT CORRECTIONS	
5	11/30/10	DISPATCH CENTER	LF
6	07/30/10	WIRE BACKLOG	LF
7	11/05/09	BACKGROUND REVISIONS	FM

Rev No. Date Remarks Initial

Drawn: H. JEANG

Checked: -

Approved: -

Date: 07.30.09

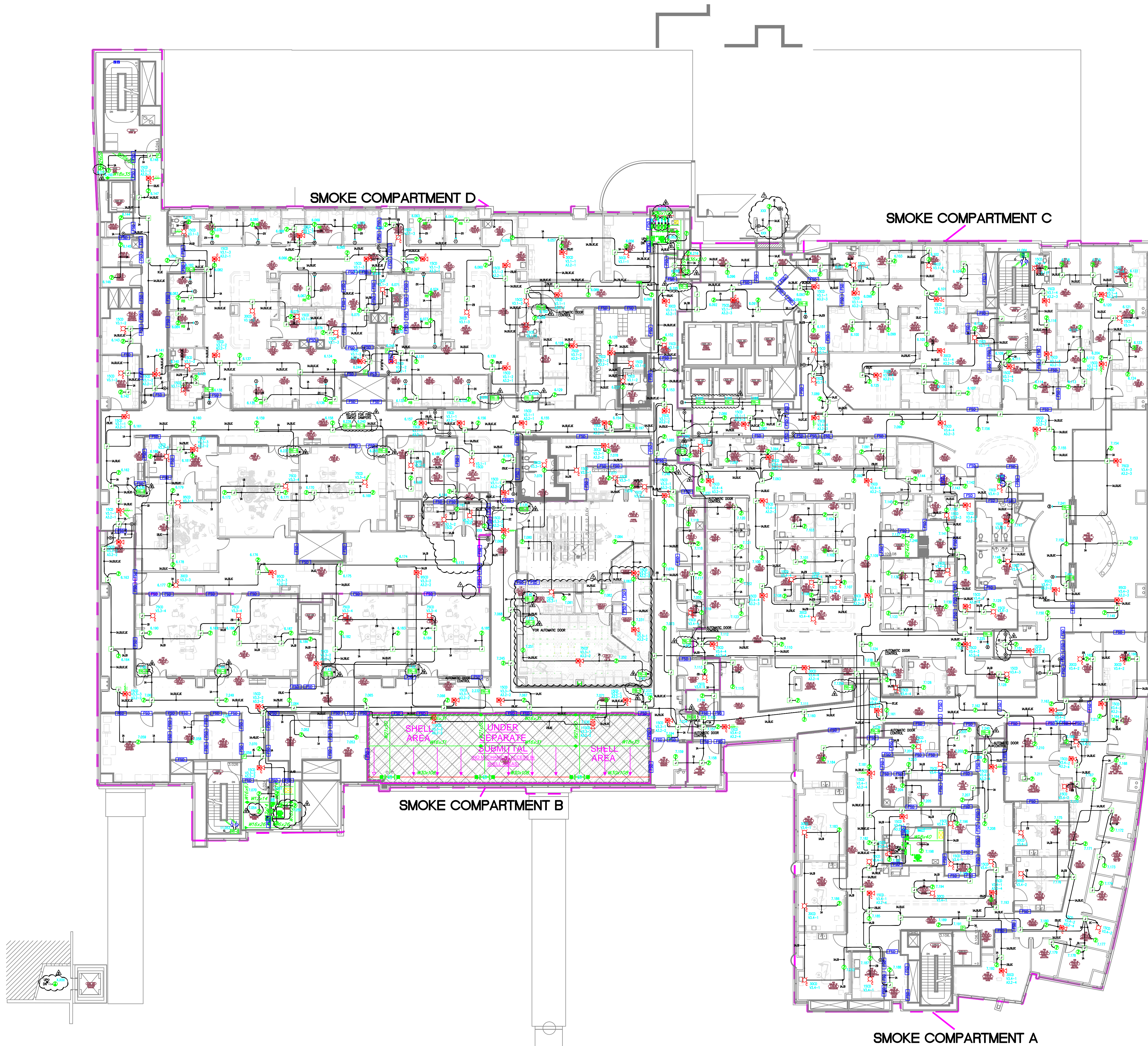
Scale: 0'-1/16" = 1'-0"

FIRE ALARM FLOORPLAN
LEVEL 3 - COMPOSITE

Job Number: 440P-056306

Project: CHILDRENS HOSPITAL OF
ORANGE COUNTY - TOWER II
455 SOUTH MAIN STREET
ORANGE, CALIFORNIA 92668-3874

Drawing Number: EF1.30



SMOKE COMPARTMENT A

SMOKE COMPARTMENT B

SMOKE COMPARTMENT D

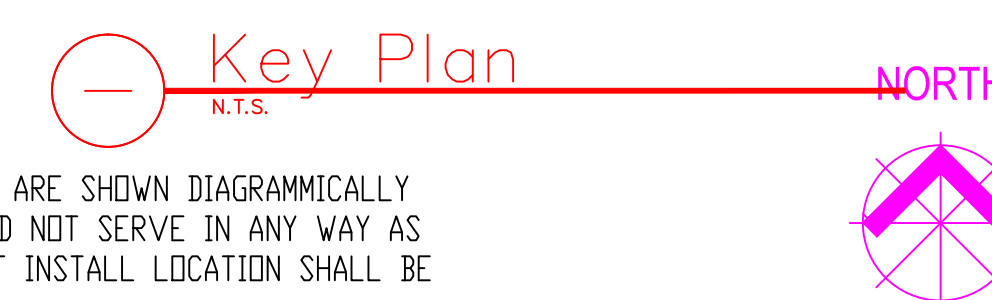
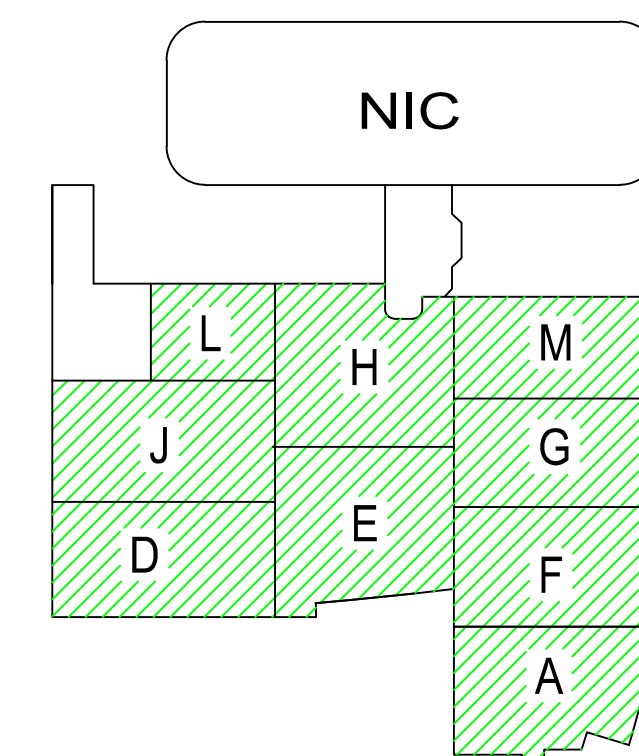
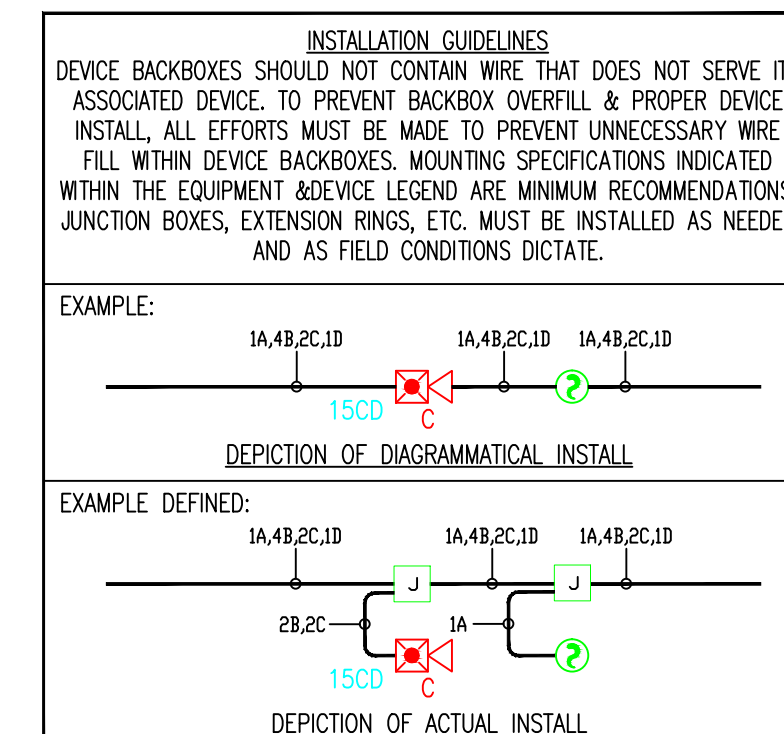
SMOKE COMPARTMENT C

MCCARTHY APPROVAL

A. Approved as noted for Architectural Review
B. Review and Rebuild
C. Rejected

This review is for general conformance with Plans and Specifications only. Any deviations from same not clearly noted by the Designer hereon shall be the responsibility of the Designer. Review shall not constitute a complete check of contract documents or shall be used to release the Designer of contractual responsibility for any error or deviation from contract requirements.

McCarthy
By: _____ Date: _____
SHEP DRAWING REFERENCE NO.



4.) AS FIELD CONDITIONS DICTATE ACTUAL RACEWAY INSTALLATIONS, DEVICE BACK BOXES AND JUNCTION BOXES SHALL BE SIZED PER FIELD INSTALLING CONDITIONS. DEVICE BACK BOX SIZES INDICATED WITHIN THIS DRAWING PACKAGE ARE MINIMUM REQUIREMENTS ONLY. AN INCREASE IN BACK BOX DEPTH, ADDITION OF EXTENSION BOX/RING, ETC. MAY BE REQUIRED IN ORDER TO PROPERLY ACCOMMODATE FOR WIRE QUANTITIES INSTALLED WITHIN THE RACEWAY.

3.) THE INSTALLATION OF DEVICE BACKBOXES & WIRE SHALL BE SIZED AND INSTALLED PER CEC. IN ADDITION SUCH BOXES & WIRE SHALL BE INSTALLED IN A MANNER AS TO ALLOW FOR THE EASE OF DEVICE INSTALLATION. THE INSTALLATION OF DEVICES WHICH REQUIRE EXCESSIVE FORCE, THE PINCHING OF WIRES, RESULT IN GROUND FAULTS, ETC. IN ORDER TO PROPERLY SEAT THE DEVICE TO IT'S FINISHED SURFACE SHALL BE CONSIDERED UNACCEPTABLE AND A NON-SIEMENS INSTALLATION STANDARD.

2.) ADDITIONAL JUNCTION BOXES NOT SHOWN WITHIN THESE PLANS MAY BE REQUIRED TO ACCOMMODATE PROPER RACEWAY INSTALLATIONS & SIZING. IT IS THE ELECTRICAL CONTRACTORS RESPONSIBILITY TO DETERMINE THE NECESSARY AMOUNT OF JUNCTION BOXES/EXTENSION RINGS REQUIRED.

1.) ALL RACEWAY RUNS INDICATED WITHIN THIS DRAWING PACKAGE ARE SHOWN DIAGRAMMATICALLY AND ARE FOR CIRCUITING PURPOSES ONLY. ALL RUNS SHOWN SHOULD NOT SERVE IN ANY WAY AS AN ACTUAL ROUTING GUIDE FOR INSTALLATION OF RACEWAYS. EXACT INSTALL LOCATION SHALL BE FIELD DETERMINED.

DAMPER MONITORING SYSTEM

CHILDRENS HOSPITAL OF
ORANGE COUNTY - TOWER II
455 SOUTH MAIN STREET
ORANGE, CALIFORNIA 92868-3874

REVISIONS

ISSUED FOR PLANCHER	03/08/11
DESIGN REVISION	07/18/11
DESIGN REVISION	11/22/11
DESIGN REVISION	11/06/12

RECORD DRAWINGS

THESE DRAWINGS HAVE BEEN PREPARED BY BEC EXCLUSIVELY FOR INSTALLATION BY BEC. BEC ACCEPTS NO LIABILITY FOR CLAIMS BY OTHERS IF BEC IS NOT THE INSTALLER. THESE DRAWINGS ARE INSTRUMENTS OF SERVICE AND ARE THE PROPERTY OF BEC. ALL DESIGNS AND OTHER INFORMATION CONTAINED ON THESE DRAWINGS ARE FOR USE ON THE SPECIFIED PROJECT, INSTALLED ONLY BY BEC, AND SHALL NOT BE REPRODUCED, ALTERED, USED TO OBTAIN PERMITS OR USED TO COMPLETE THIS PROJECT OR ANY OTHER PROJECT, BY OTHERS, WITHOUT FIRST OBTAINING THE EXPRESSED WRITTEN PERMISSION AND CONSENT OF BEC. THESE DRAWINGS SHALL NOT BE ASSIGNED TO A THIRD PARTY WITHOUT WRITTEN PERMISSION AND CONSENT FROM BEC. USE OF THESE DRAWINGS IN ANY SUCH MANNER WITHOUT BEC'S WRITTEN CONSENT SHALL CONSTITUTE TOTAL INDEMNIFICATION OF BEC LIABILITY.

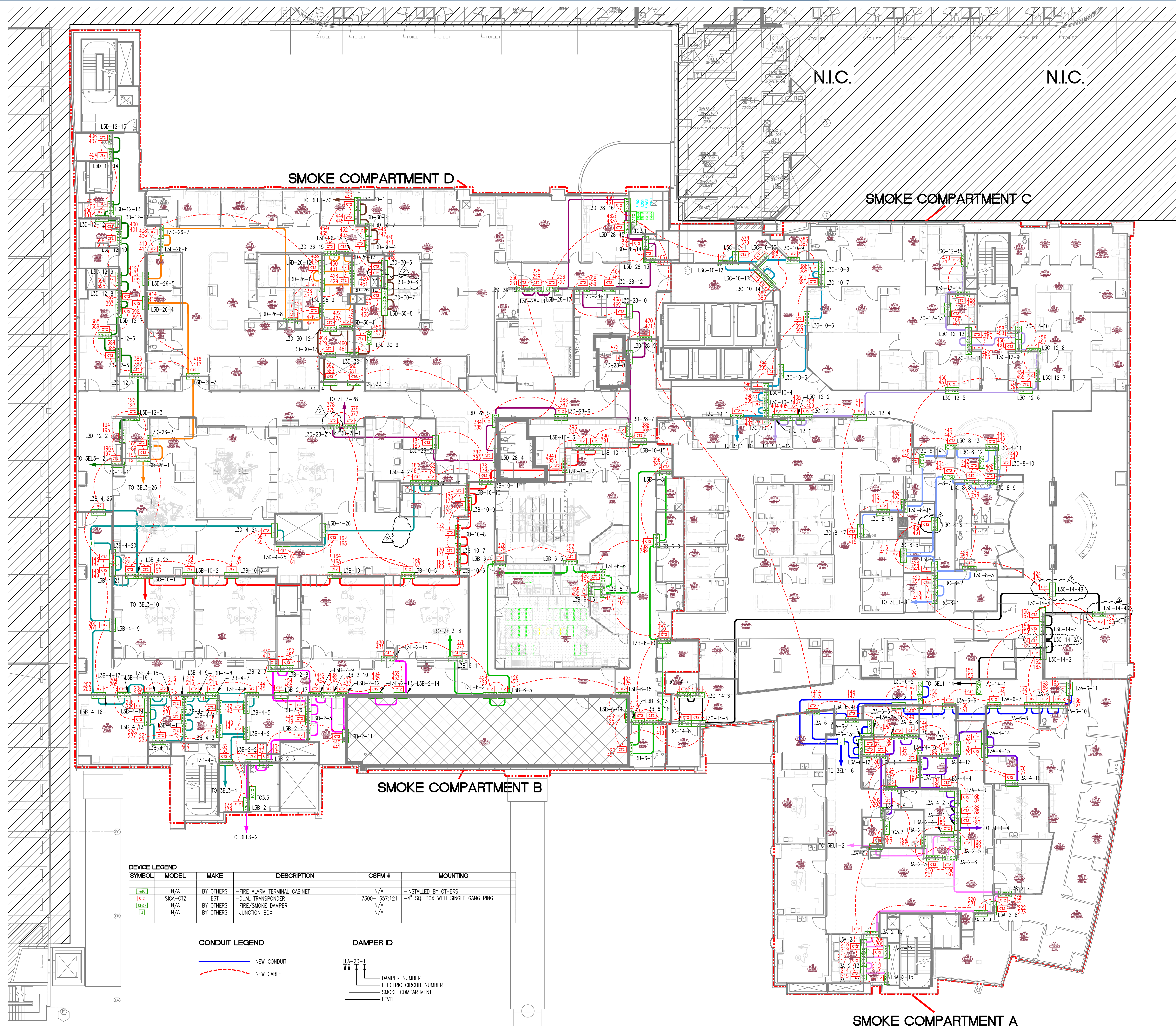




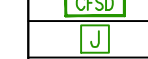
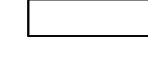
DRAWING DATE: 03/08/11
 SCALE: 1/16" = 1'-0"
 FILE NAME: FA0000LDWG
 DESIGNED BY: C.S.
 PROJECT MANAGER: KYLE OBERMIRE
 CONTACT NUMBER: (909) 305-1600

SHEET TITLE

DAMPER MONITORING
SYSTEM
LEVEL 3
SHEET No.

FA-03.4



SYMBOL	MODEL	MAKE	DESCRIPTION	CSFM #	MOUNTING
	N/A	BY OTHERS	-FIRE ALARM TERMINAL CABINET	N/A	-INSTALLED BY OTHERS
	SGA-012	EST	-DUAL TRANSPONDER	7300-1857-121	-4" SQ. BOX WITH SINGLE GANG RING
	N/A	BY OTHERS	-FIRE/SMOKE DAMPER	N/A	
	N/A	BY OTHERS	-JUNCTION BOX	N/A	

CONDUIT LEGEND

— NEW CONDUIT
 - - - NEW CABLE

DAMPER ID

— DAMPER NUMBER
 — ELECTRIC CIRCUIT NUMBER
 — SMOKE COMPARTMENT
 — LEVEL

SIEMENS

CALIFORNIA STATE CONTRACTORS
LICENSE NO.: #758796 - B/ C10/ C16/ C20

Siemens Building Technologies, Inc.
FIS FIRE/LIFE SAFETY DIVISION

10775 Business Center Drive
Cypress, California 90630 USA

Phone: (714) 761-2200
Fax: (714) 220-4958

This drawing and the information and design application herein contained is the property of SIEMENS BUILDING TECHNOLOGIES, Inc. and is loaned upon the express condition that the same be returned to SIEMENS BUILDING TECHNOLOGIES, Inc. upon request; all information herein contained shall be treated as secret and confidential; no reproduction of this drawing or part thereof shall be made without the written consent of SIEMENS BUILDING TECHNOLOGIES, Incorporated.



BUILDING ELECTRONIC CONTROLS, INC.

2246 Lindsay Way
Glendora, CA 91740

PHONE: (909) 305-1600
FAX #: (909) 305-1604

LICENSE NO.: 729805
CLASSIFICATION: ESI-C-7 C10

EXPIRATION DATE: 11/30/2012
RICHARD TAYLOR



NOTES:

- INTERFERENCE TO PATIENT ROOM BONE LIGHT, DOME LIGHT & POWER SHALL BE FURNISHED AND INSTALLED BY OTHERS.
- NOT USED
- INTERFERENCE TO VEN DOOR / ROLL-DOWN DOOR / SHUTTER FOR RELEASE EQUIPMENT & POWER SHALL BE FURNISHED AND INSTALLED BY OTHERS.
- INTERFERENCE FOR MONITORING STATUS OF EQUIPMENT.
- SYNCHRONIZING CONFIGURATION OF ALL PAD PANELS.
- KEY ACTIVATION & MONITORING / HTR-20 MONITORING FOR PAD PANELS.
- INTERFERENCE FOR RELEASE OF MAGNETIC DOOR HOLD OPEN DEVICES.
- INTERFERENCE FOR RELEASE OF COMBINATION SMOKE FIRE DAMPER CIRCUITS (EXCLUDING ISOLATION ROOMS).
- INTERFERENCE FOR ELEVATOR RECALL (PRIMARY).
- INTERFERENCE FOR ELEVATOR RECALL (ALT-RECALL).
- INTERFERENCE FOR ELEVATOR SHUNT TRIP.
- INTERFERENCE FOR ELEVATOR SHUNT TRIP (BATTERY).
- INTERFERENCE FOR ELEVATOR CAB LIGHT (STEADY).
- INTERFERENCE FOR ELEVATOR CAB LIGHT (FLASHING).
- INTERFERENCE FOR RELEASE OF COMBINATION SMOKE FIRE DAMPER CIRCUITS FOR ISOLATION ROOMS ONLY.
- INTERFERENCE FOR HVAC SHUTDOWN.
- INTERFERENCE FOR MONITORING OF DISCONNECT SWITCH.
- MONITOR MODULE TO MONITOR ASPIRATING SMOKE DETECTION PANEL.
- PRE-ALARM - FIRE 2
- TRouble - FIRE 1
- CONTROL RELAY (HTR-20) IS PROVIDED FOR ASPIRATING SMOKE DETECTION PANEL RESET.
- MONITOR MODULES TO MONITOR PREACTION PANEL.
- ALARM - SUPERVISORY
- TRouble - FIRE 1
- PROVIDE 120V AC - 200 AMP DEDICATED CIRCUIT FOR THE POWER SUPPLY.
- CONTROL RELAY (HTR-20) IS PROVIDED FOR DIMMER CONTROLS ACTIVATION.

MCCARTHY APPROVAL

A. Approved as noted for architectural Review

B. Review and Revisit

C. Reissue

This review is for general conformance with Plans and Specifications only. Any deviations from same not clearly noted by the Engineer have not been reviewed. Reviewer shall not constitute a complete check of detailed dimensions or notes to which to release the Engineer of contractual responsibility for any error or deviation from contract requirements.

McCarthy

By: _____ Date: _____

CHOP DRAWING REFERENCE NO. _____

- ☐ MXL ☐ VOICE ☐ XL3 ☐ SYSTEMS
☒ XLS ☐ FS-250 ☐ EST3 ☐ OTHER

OSHPD NO. #: IL-072072-30

Rev No.	Date	Remarks	Initial
1	07/20/12	DESIGN REVISION	
2	11/27/11	DESIGN REVISION	
3	07/21/11	DESIGN REVISION	
4	05/02/11	FULLERTON FIRE DEPARTMENT CORRECTIONS	
5	11/30/10	DISPATCH CENTER	LF
6	07/30/10	WASTE BACKLOG	FM
7	11/05/09	BACKGROUND REVISIONS	

Rev No. Date Remarks Initial

Drawn: H.JEANG

Checked: -

Approved: -

Date: 07.30.09

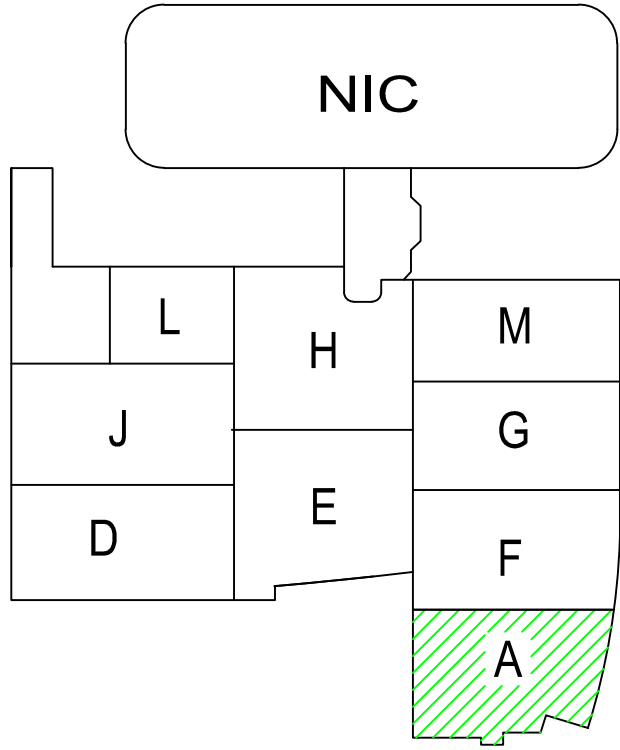
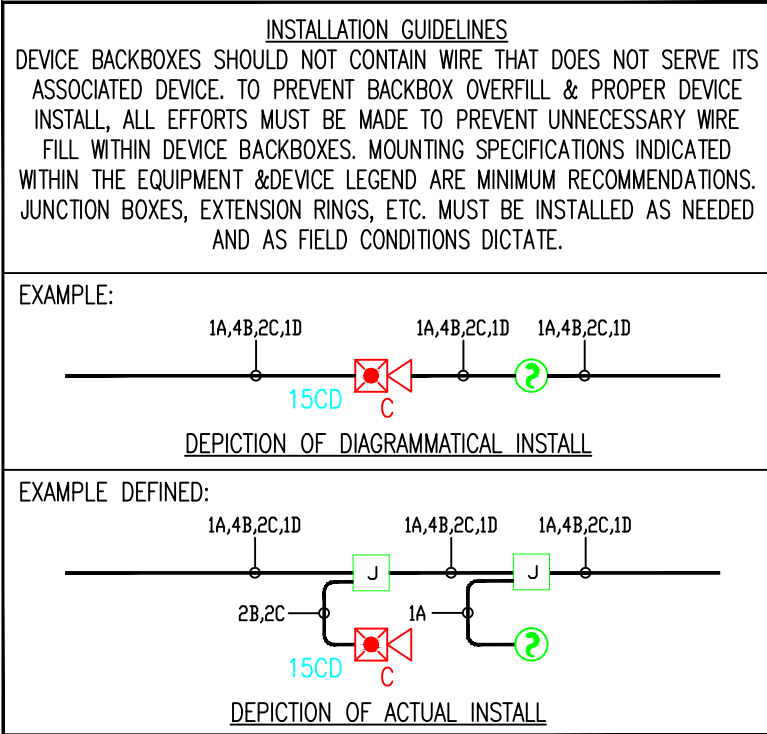
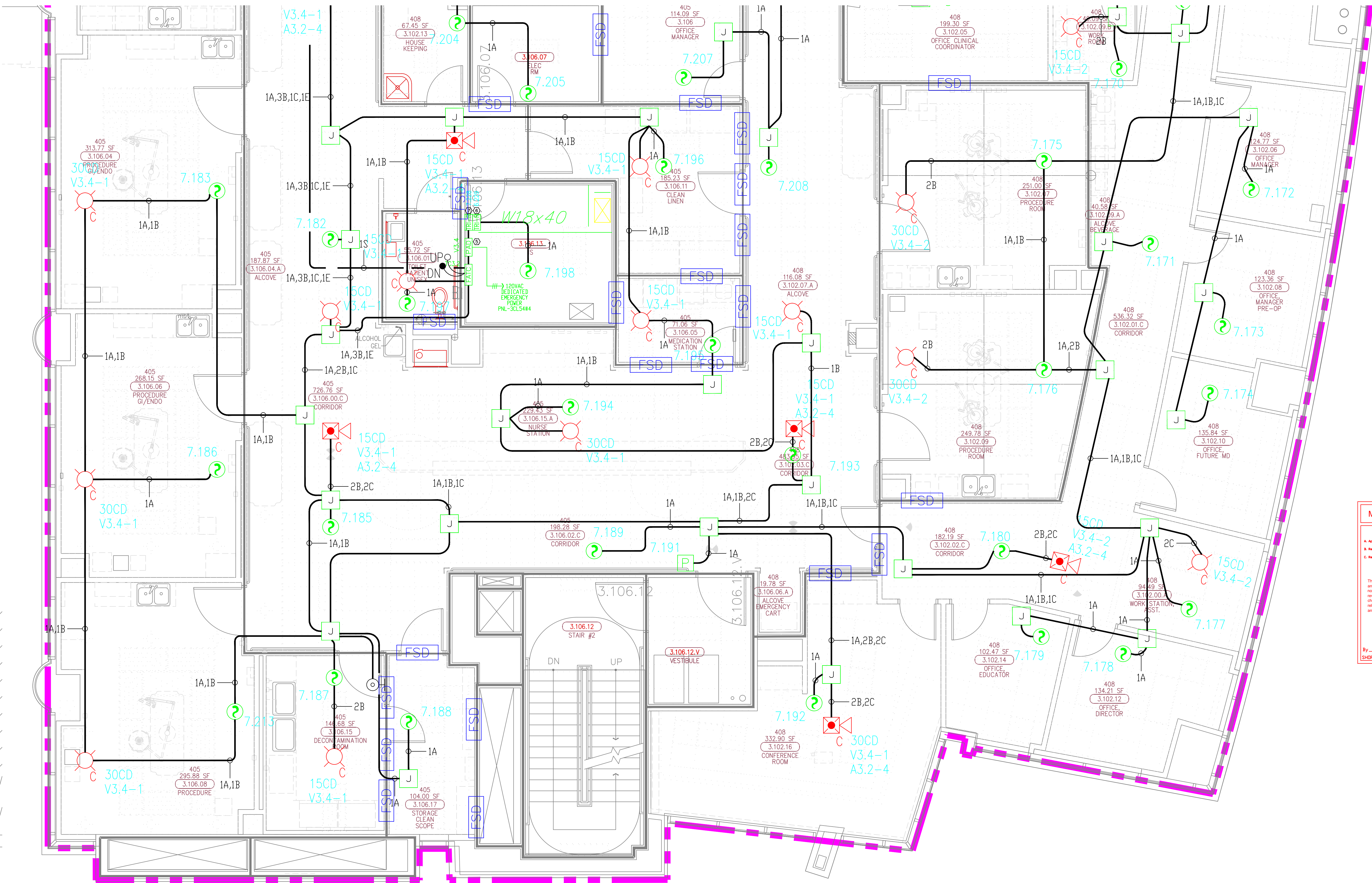
Scale: 0'-1/4" = 1'-0"

FIRE ALARM FLOORPLAN
LEVEL 3 - AREA A

Job Number: 440P-056306

Project: CHILDRENS HOSPITAL OF
ORANGE COUNTY - TOWER II
455 SOUTH MAIN STREET
ORANGE, CALIFORNIA 92668-3874

Drawing Number: EF3.3A



4) AS FIELD CONDITIONS DICTATE ACTUAL RACEWAY INSTALLATIONS, DEVICE BACK BOXES AND JUNCTION BOXES SHALL BE SIZED PER FIELD INSTALLING CONDITIONS. DEVICE BACK BOX SIZES INDICATED WITHIN THIS DRAWING PACKAGE ARE MINIMUM REQUIREMENTS ONLY. AN INCREASE IN BACK BOX DEPTH, ADDITION OF EXTENSION BOX/RING, ETC. MAY BE REQUIRED IN ORDER TO PROPERLY ACCOMMODATE FOR WIRE QUANTITIES INSTALLED WITHIN THE RACEWAY.

3) THE INSTALLATION OF DEVICE BACKBOXES & WIRE SHALL BE SIZED AND INSTALLED PER CEC. IN ADDITION SUCH BOXES & WIRE SHALL BE INSTALLED IN A MANNER AS TO ALLOW FOR THE EASE OF DEVICE INSTALLATION. THE INSTALLATION OF DEVICES WHICH REQUIRE EXCESSIVE FORCE, THE PINCHING OF WIRES, RESULT IN GROUND FAULTS, ETC. IN ORDER TO PROPERLY SEAT THE DEVICE TO IT'S FINISHED SURFACE SHALL BE CONSIDERED UNACCEPTABLE AND A NON-SIEMENS INSTALLATION STANDARD.

2) ADDITIONAL JUNCTION BOXES NOT SHOWN WITHIN THESE PLANS MAY BE REQUIRED TO ACCOMMODATE PROPER RACEWAY INSTALLATIONS & SIZING. IT IS THE ELECTRICAL CONTRACTORS RESPONSIBILITY TO DETERMINE THE NECESSARY AMOUNT OF JUNCTION BOXES/EXTENSION RINGS REQUIRED.

1) ALL RACEWAY RUNS INDICATED WITHIN THIS DRAWING PACKAGE ARE SHOWN DIAGRAMMATICALLY AND ARE FOR CIRCUITING PURPOSES ONLY. ALL RUNS SHOWN SHOULD NOT SERVE IN ANY WAY AS AN ACTUAL ROUTING GUIDE FOR INSTALLATION OF RACEWAYS. EXACT INSTALL LOCATION SHALL BE FIELD DETERMINED.

SIEMENS

CALIFORNIA STATE CONTRACTORS
LICENSE NO.: #758796 - B/ C10/ C16/ C20

Siemens Building Technologies, Inc.
FIS FIRE/LIFE SAFETY DIVISION
10775 Business Center Drive
Cypress, California 90630 USA
Phone: (714) 761-2200
Fax: (714) 220-4958

This drawing and the information and design application herein contained is the property of SIEMENS BUILDING TECHNOLOGIES, Inc. and is loaned upon the express condition that the same be returned to SIEMENS BUILDING TECHNOLOGIES, Inc. upon request; all information herein contained shall be treated as secret and confidential; no reproduction of this drawing or part thereof shall be made without the written consent of SIEMENS BUILDING TECHNOLOGIES, Incorporated.



BUILDING ELECTRONIC CONTROLS, INC.
2246 Lindsay Way
Glendora, CA 91740
PHONE: (909) 305-1600
FAX #: (909) 305-1604
LICENSE NO.: 729805
CLASSIFICATION: E5, C-7, C10
EXPIRATION DATE: 11/30/2012
RICHARD TAYLOR



- NOTES:
- ① INTERFACE TO PATIENT ROOM BONE LIGHT, BONE LIGHT & POWER SHALL BE FURNISHED AND INSTALLED BY OTHERS.
 - ② NOT USED
 - ③ INTERFACE TO VEN DOOR / ROLL-UP DOOR / SHUTTER FOR RELEASE. EQUIPMENT & POWER SHALL BE FURNISHED AND INSTALLED BY OTHERS.
 - ④ INTERFACE FOR MONITORING STATUS OF EQUIPMENT.
 - ⑤ SYNCHRONIZING CONFIGURATION OF ALL PAD PANELS.
 - ⑥ GFDY ACTIVATION & MONITORING / GFDY-S MONITORING FOR PAD PANELS.
 - ⑦ INTERFACE FOR RELEASE OF MAGNETIC DOOR HOLD OPEN DEVICES.
 - ⑧ INTERFACE FOR RELEASE OF COMBINATION SMOKE FIRE DAMPER CIRCUITS (EXCLUDING ISOLATION ROOMS).
 - ⑨ INTERFACE FOR ELEVATOR RECALL (PRIMARY).
 - ⑩ INTERFACE FOR ELEVATOR RECALL (ALT-RECALL).
 - ⑪ INTERFACE FOR ELEVATOR SHUNT TRIP.
 - ⑫ INTERFACE FOR ELEVATOR SHUNT TRIP (BATTERY).
 - ⑬ INTERFACE FOR ELEVATOR CAB LIGHT (STEADY).
 - ⑭ INTERFACE FOR ELEVATOR CAB LIGHT (FLASHING).
 - ⑮ INTERFACE FOR RELEASE OF COMBINATION SMOKE FIRE DAMPER CIRCUITS FOR ISOLATION ROOMS ONLY.
 - ⑯ INTERFACE FOR HVAC SHUTDOWN.
 - ⑰ INTERFACE FOR MONITORING OF DISCONNECT SWITCH.
 - ⑱ MONITOR MODULE TO MONITOR ASPIRATING SMOKE DETECTION PANEL.
 - ⑲ PRE-ALARM - FIRE 2 - TROUBLE
 - ⑳ CONTROL RELAY (HTRI-2) IS PROVIDED FOR ASPIRATING SMOKE DETECTION PANEL RESET.
 - ㉑ MONITOR MODULES TO MONITOR PREACTION PANEL.
 - ㉒ -ALARM - SUPERVISORY - TROUBLE
 - ㉓ PROVIDE 120V AC, 200 AMP'S DEDICATED CIRCUIT FOR THE POWER SUPPLY.
 - ㉔ CONTROL RELAY (HTRI-2) IS PROVIDED FOR DIMMER CONTROLS ACTIVATION.

- ☐ MXL ☐ VOICE ☐ XL3 ☐ SYSTEMS
☒ XLS ☐ FS-250 ☐ EST3 ☐ OTHER

OSHPD NO. #: IL-072072-30

Rev No.	Date	Remarks	Initial
1	07/20/12	DESIGN REVISION	
2	11/21/11	DESIGN REVISION	
3	07/21/11	DESIGN REVISION	
4	05/02/11	FULLERTON FIRE DEPARTMENT CORRECTIONS	
5	11/30/10	DISPATCH	LF
6	07/30/10	BACKLOG REVISIONS	FM
7	11/05/09	BACKGROUND REVISIONS	

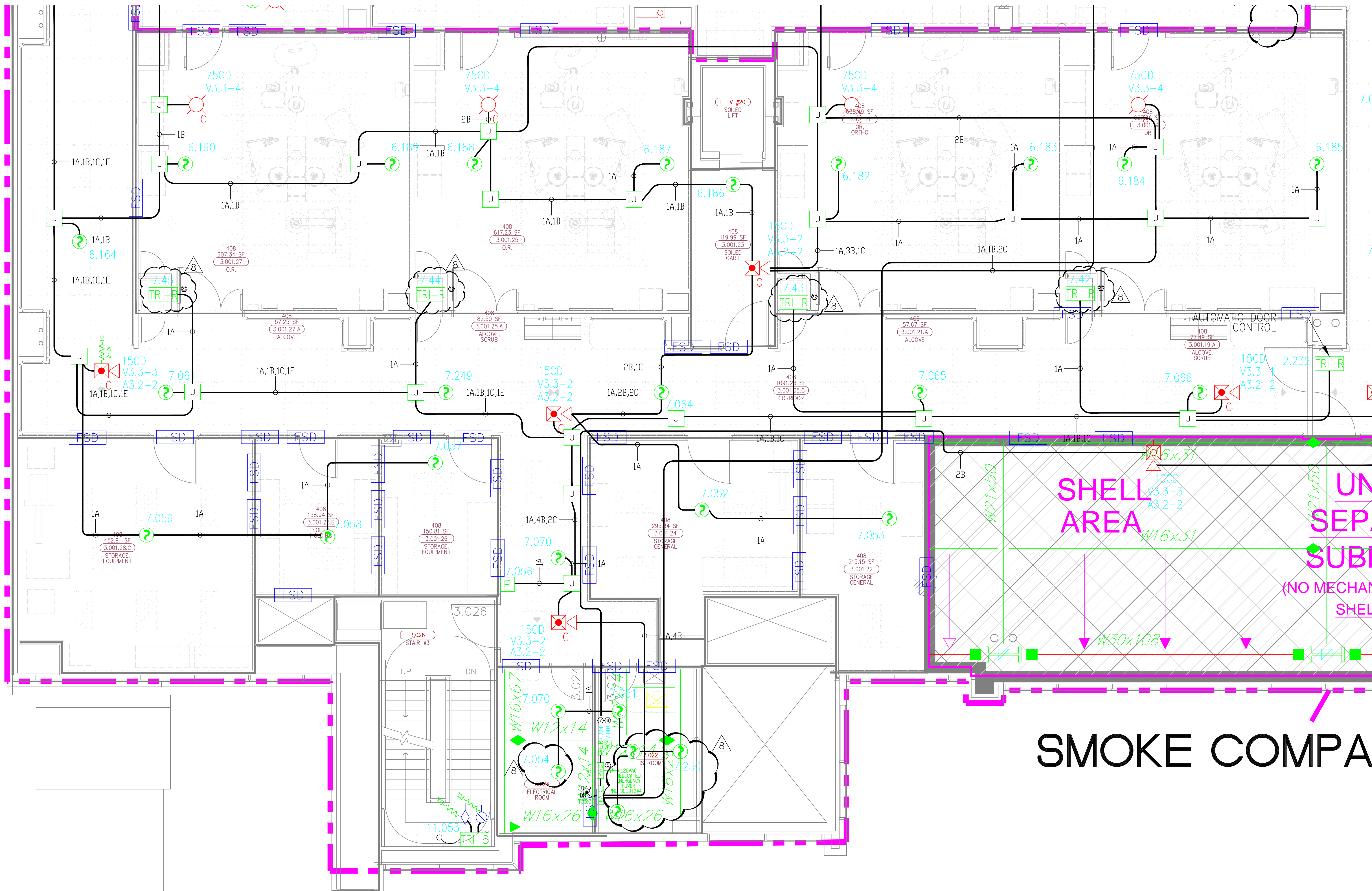
Drawn:	H. JEANG
Checked:	-
Approved:	-
Date:	07.30.09
Scale:	0'-1/4" = 1'-0"

FIRE ALARM FLOORPLAN LEVEL 3 - AREA D

Job Number: 440P-056306

Project: CHILDRENS HOSPITAL OF
ORANGE COUNTY - TOWER II
455 SOUTH MAIN STREET
ORANGE, CALIFORNIA 92668-3874

Drawing Number: EF3.3D



4.) THE INSTALLATION OF DEVICE BACKBOXES & WIRE SHALL BE SIZED AND INSTALLED PER CEC. IN ADDITION SUCH BOXES & WIRE SHALL BE INSTALLED IN A MANNER AS TO ALLOW FOR THE EASE OF DEVICE INSTALLATION. THE INSTALLATION OF DEVICES WHICH REQUIRE EXCESSIVE FORCE, THE PINCHING OF WIRES, RESULT IN GROUND FAULTS, ETC. IN ORDER TO PROPERLY SEAT THE DEVICE TO IT'S FINISHED SURFACE SHALL BE CONSIDERED UNACCEPTABLE AND A NON-SIEMENS INSTALLATION STANDARD.



Drawing Number: EF3.3E

SIEMENS

CALIFORNIA STATE CONTRACTORS
LICENSE NO.: #758796 - B/ C10/ C16/ C20

Siemens Building Technologies, Inc.
FIS FIRE/LIFE SAFETY DIVISION
10775 Business Center Drive
Cypress, California 90630 USA
Phone: (714) 761-2200
Fax: (714) 220-4958

This drawing and the information and design application herein contained is the property of SIEMENS BUILDING TECHNOLOGIES, Inc. and is loaned upon the express condition that the same be returned to SIEMENS BUILDING TECHNOLOGIES, Inc. upon request; all information herein contained shall be treated as secret and confidential; no reproduction of this drawing or part thereof shall be made without the written consent of SIEMENS BUILDING TECHNOLOGIES, Incorporated.



BUILDING ELECTRONIC CONTROLS, INC.
2246 Lindsay Way
Glendora, CA 91740
PHONE: (909) 305-1600
FAX #: (909) 305-1604



LICENSE NO.: 729805
CLASSIFICATION: B1, C-7, C10
EXPIRATION DATE: 11/30/2012
RICHARD TAYLOR

- NOTES:
- ① INTERFACE TO PATIENT ROOM BONE LIGHT, DOME LIGHT & POWER SHALL BE FURNISHED AND INSTALLED BY OTHERS.
 - ② NOT USED
 - ③ INTERFACE TO VEN DOOR / ROLL-DOWN DOOR / SHUTTER FOR RELEASE. EQUIPMENT & POWER SHALL BE FURNISHED AND INSTALLED BY OTHERS.
 - ④ INTERFACE FOR MONITORING STATUS OF EQUIPMENT.
 - ⑤ SYNCHRONIZATION CONFIGURATION OF ALL PAD PANELS.
 - ⑥ KEY ACTIVATION & MONITORING / KHS-MS MONITORING FOR PAD PANELS.
 - ⑦ INTERFACE FOR RELEASE OF MAGNETIC DOOR HOLD OPEN DEVICES.
 - ⑧ INTERFACE FOR RELEASE OF COMBINATION SMOKE FIRE DAMPER CIRCUITS (EXCLUDING ISOLATION ROOMS).
 - ⑨ INTERFACE FOR ELEVATOR RECALL (PRIMARY).
 - ⑩ INTERFACE FOR ELEVATOR RECALL (ALT-RECALL).
 - ⑪ INTERFACE FOR ELEVATOR SHUNT TRIP.
 - ⑫ INTERFACE FOR ELEVATOR SHUNT TRIP (BATTERY).
 - ⑬ INTERFACE FOR ELEVATOR CAB LIGHT (STEADY).
 - ⑭ INTERFACE FOR ELEVATOR CAB LIGHT (FLASHING).
 - ⑮ INTERFACE FOR RELEASE OF COMBINATION SMOKE FIRE DAMPER CIRCUITS FOR ISOLATION ROOMS ONLY.
 - ⑯ INTERFACE FOR HVAC SHUTDOWN.
 - ⑰ INTERFACE FOR MONITORING OF DISCONNECT SWITCH.
 - ⑱ MONITOR MODULE TO MONITOR ASPIRATING SMOKE DETECTION PANEL.
-PRE-ALARM
-FIRE 2
-TROUBLE
⑲ CONTROL RELAY (HTRI-R) IS PROVIDED FOR ASPIRATING SMOKE DETECTION PANEL RESET.
 - ⑳ MONITOR MODULES TO MONITOR PREACTION PANEL.
-ALARM
-SUPERVISORY
-TROUBLE
㉑ PROVIDE 120V AC, 20 AMP DEDICATED CIRCUIT FOR THE POWER SUPPLY.
 - ㉒ CONTROL RELAY (HTRI-R) IS PROVIDED FOR DIMMER CONTROLS ACTIVATION.

MXL VOICE XL3 SYSTEMS
XLS FS-250 EST3 OTHER

OSHPD NO. #: IL-072072-30

Rev No.	Date	Remarks	Initial
1	07/20/12	DESIGN REVISION	
2	11/21/11	DESIGN REVISION	
3	07/21/11	DESIGN REVISION	
4	05/02/11	FULLERTON FIRE DEPARTMENT CORRECTIONS	
5	11/30/10	DISPATCH ROOM	LF
6	07/30/10	DISPATCH ROOM	LF
7	11/05/09	BACKGROUND REVISIONS	FM

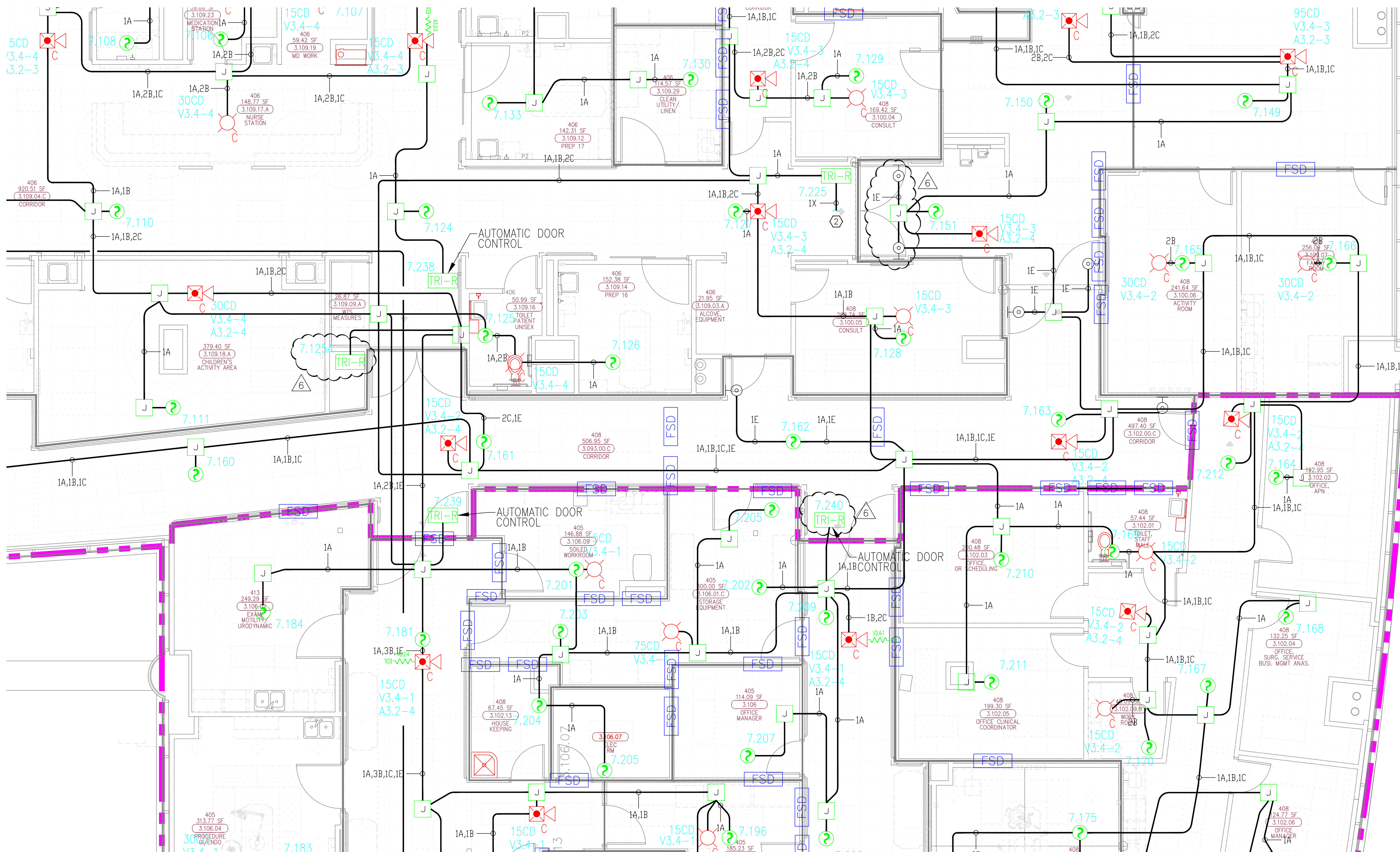
Drawn	H. JEANG
Checked	-
Approved	-
Date	07.30.09
Scale	0'-1/4" = 1'-0"

FIRE ALARM FLOORPLAN LEVEL 3 - AREA F

Job Number: 440P-056306

Project: CHILDRENS HOSPITAL OF
ORANGE COUNTY - TOWER II
455 SOUTH MAIN STREET
ORANGE, CALIFORNIA 92668-3874

Drawing Number: EF3.3F



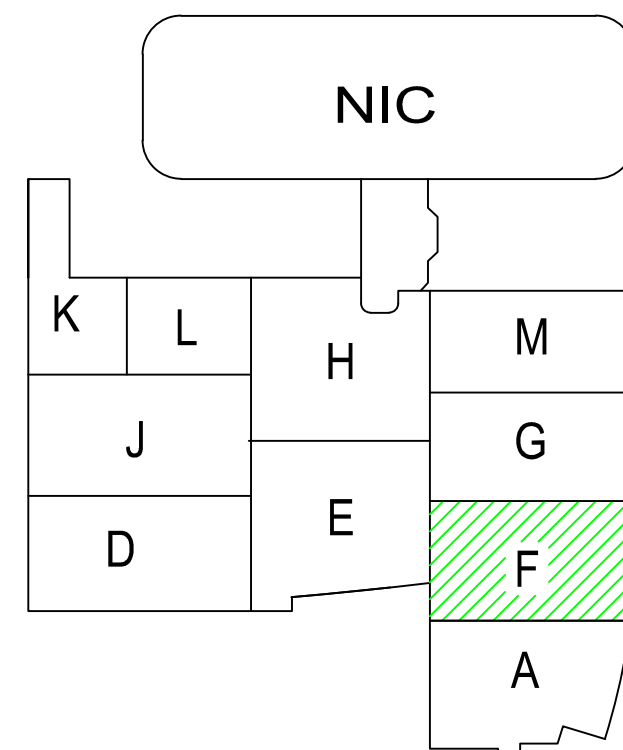
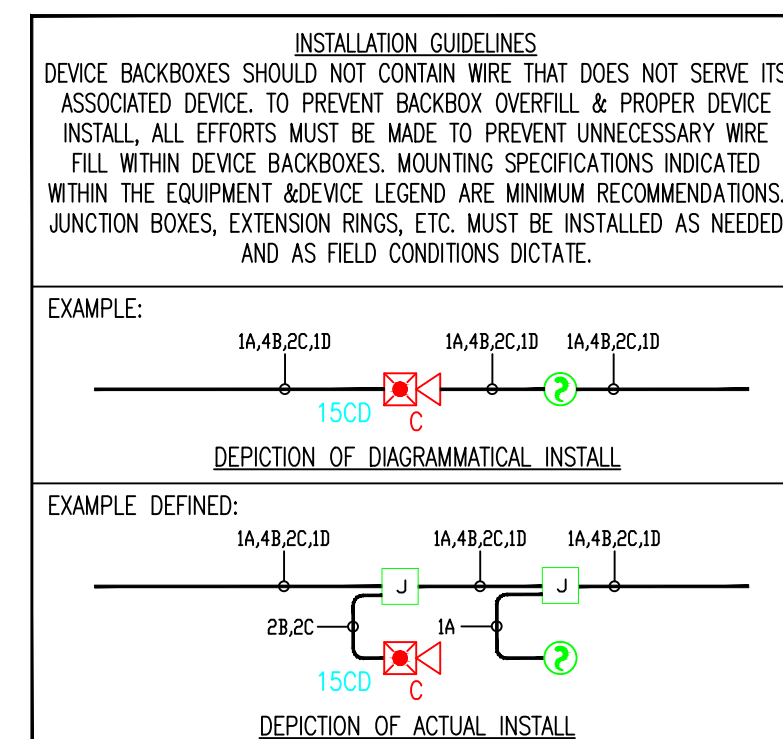
MCCARTHY APPROVAL

A. Approved as noted for Architectural Review ☐
B. Review and Re-submit ☐
C. Rejected ☐

This review is for general conformance with Plans and Specifications only. Any deviation from same not clearly noted by the Designer shall be the responsibility of the Designer. Review shall not constitute a complete check of design or construction. The Designer shall release the Designer of contractual responsibility for any error or deviation from contract requirements.

McCarthy

By: _____ Date: _____
SHEP DRAWING REFERENCE NO.



4) AS FIELD CONDITIONS DICTATE ACTUAL RACEWAY INSTALLATIONS, DEVICE BACK BOXES AND JUNCTION BOXES SHALL BE SIZED PER FIELD INSTALLING CONDITIONS. DEVICE BACK BOX SIZES INDICATED WITHIN THIS DRAWING PACKAGE ARE MINIMUM REQUIREMENTS ONLY. AN INCREASE IN BACK BOX DEPTH, ADDITION OF EXTENSION BOX/RING, ETC. MAY BE REQUIRED IN ORDER TO PROPERLY ACCOMMODATE FOR WIRE QUANTITIES INSTALLED WITHIN THE RACEWAY.

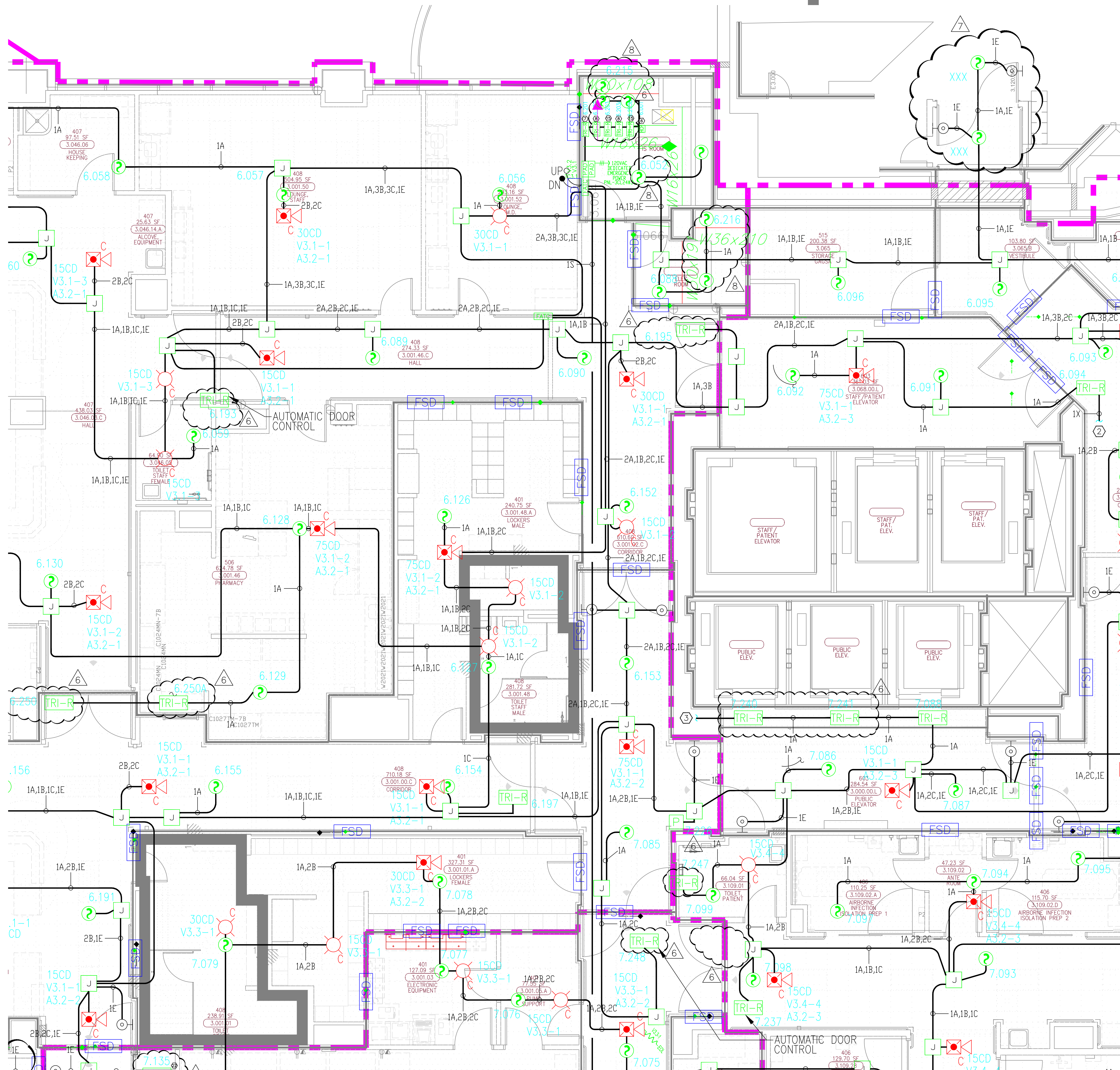
3) THE INSTALLATION OF DEVICE BACKBOXES & WIRE SHALL BE SIZED AND INSTALLED PER CEC. IN ADDITION SUCH BOXES & WIRE SHALL BE INSTALLED IN A MANNER AS TO ALLOW FOR THE EASE OF DEVICE INSTALLATION. THE INSTALLATION OF DEVICES WHICH REQUIRE EXCESSIVE FORCE, THE PINCHING OF WIRES, RESULT IN GROUND FAULTS, ETC. IN ORDER TO PROPERLY SEAT THE DEVICE TO IT'S FINISHED SURFACE SHALL BE CONSIDERED UNACCEPTABLE AND A NON-SIEMENS INSTALLATION STANDARD.

2) ADDITIONAL JUNCTION BOXES NOT SHOWN WITHIN THESE PLANS MAY BE REQUIRED TO ACCOMMODATE PROPER RACEWAY INSTALLATIONS & SIZING. IT IS THE ELECTRICAL CONTRACTORS RESPONSIBILITY TO DETERMINE THE NECESSARY AMOUNT OF JUNCTION BOXES/EXTENSION RINGS REQUIRED.

1) ALL RACEWAY RUNS INDICATED WITHIN THIS DRAWING PACKAGE ARE SHOWN DIAGRAMMATICALLY AND ARE FOR CIRCUITING PURPOSES ONLY. ALL RUNS SHOWN SHOULD NOT SERVE IN ANY WAY AS AN ACTUAL ROUTING GUIDE FOR INSTALLATION OF RACEWAYS. EXACT INSTALL LOCATION SHALL BE FIELD DETERMINED.

1.) ALL RACEWAY RUNS INDICATED WITHIN THIS DRAWING PACKAGE ARE SHOWN DIAGRAMMATICALLY AND ARE FOR CIRCUITING PURPOSES ONLY. ALL RUNS SHOWN SHOULD NOT SERVE IN ANY WAY AS AN ACTUAL ROUTING GUIDE FOR INSTALLATION OF RACEWAYS. EXACT INSTALL LOCATION SHALL BE FIELD DETERMINED.

4.) THE INSTALLATION OF DEVICE BACKBOXES & WIRE SHALL BE SIZED AND INSTALLED PER CEC. IN ADDITION SUCH BOXES & WIRE SHALL BE INSTALLED IN A MANNER AS TO ALLOW FOR THE EASE OF DEVICE INSTALLATION. THE INSTALLATION OF DEVICES WHICH REQUIRE EXCESSIVE FORCE, THE PINCHING OF WIRES, RESULT IN GROUND FAULTS, ETC. IN ORDER TO PROPERLY SEAT THE DEVICE TO IT'S FINISHED SURFACE SHALL BE CONSIDERED UNACCEPTABLE AND A NON-SIEMENS INSTALLATION STANDARD.



INSTALLATION GUIDELINES

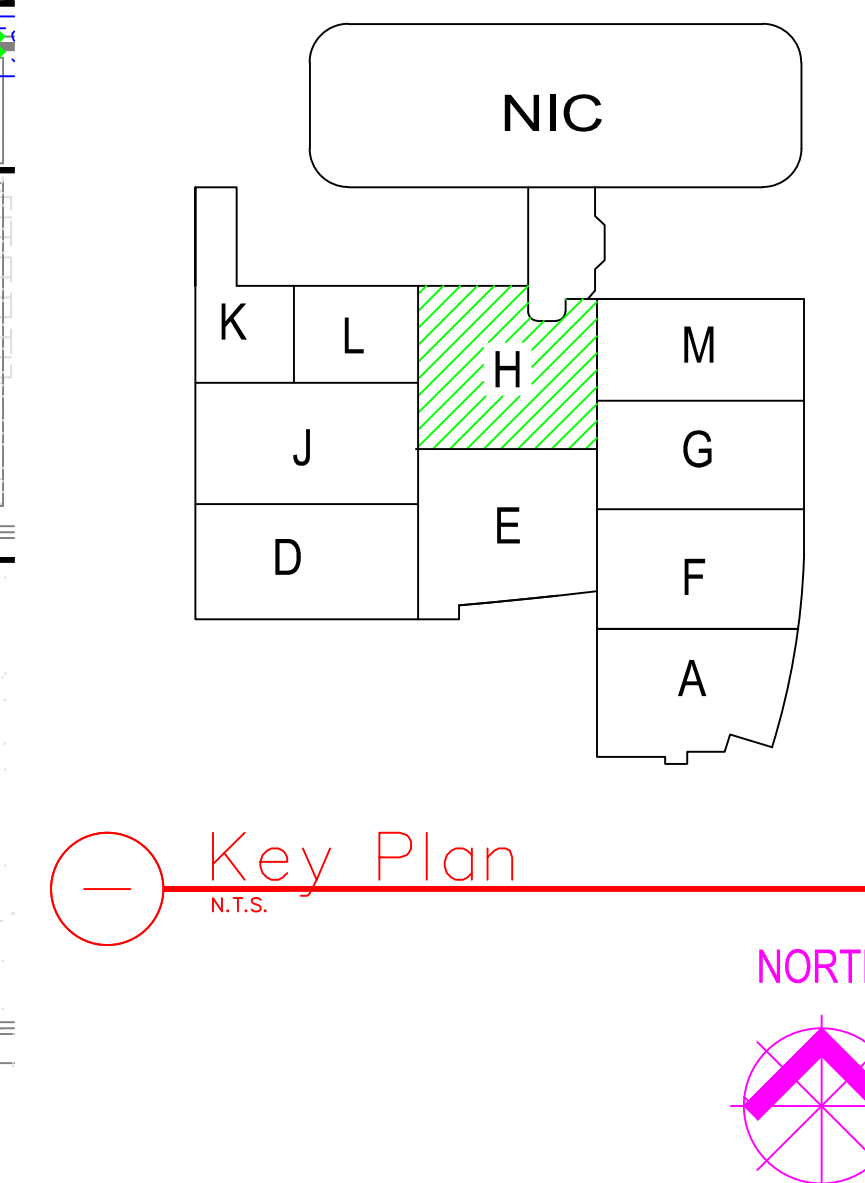
DEVICE BACKBOXES SHOULD NOT CONTAIN WIRE THAT DOES NOT SERVE IT ASSOCIATED. TO PREVENT BACKBOX OVERFILL & PROPER DEVICE INSTALL, ALL EFFORTS MUST BE MADE TO PREVENT UNNECESSARY WIRE FILL WITHIN THE EQUIPMENT. MOVING SCHEDULES INDICATED WITHIN THE EQUIPMENT EQUIPMENT LEGEND ARE MINIMUM RECOMMENDATIONS. JUNCTION BOXES, EXTENSION RINGS, ETC. MUST BE INSTALLED AS NEEDED AND AS FIELD CONDITIONS DICTATE.

EXAMPLE:

DEPICTION OF DIAGRAMMATICAL INSTALL

EXAMPLE DEFINED:

DEPICTION OF ACTUAL INSTALL



NOTES:

- ① INTERFACE TO PATIENT ROOM DIMM LIGHT, DIMM LIGHT & POWER SHALL BE FURNISHED AND INSTALLED BY OTHERS.
- ② NOT USED
- ③ INTERFACE TO VEN DOWN / ROLL-DOWN DOOR / SHUTTER FOR RELEASE, EQUIPMENT & POWER SHALL BE FURNISHED AND INSTALLED BY OTHERS.
- ④ INTERFACE FOR MONITORING STATUS OF EQUIPMENT.
- ⑤ SYNCHRONIZING CONFIGURATION OF ALL PAD PANELS.
- ⑥ (RPE) ACTIVATION & MONITORING / GHTH-40 MONITORING FOR PAD PANELS.
- ⑦ INTERFACE FOR RELEASE OF MAGNETIC DOOR HOLD OPEN DEVICES.
- ⑧ INTERFACE FOR RELEASE OF COMBINATION SMOKE FIRE DAMPER CIRCUITS EXCLUDING ISOLATION ROOMS.
- ⑨ INTERFACE FOR ELEVATOR RECALL (PRIMARY)
- ⑩ INTERFACE FOR ELEVATOR RECALL (ALT-RECALL)
- ⑪ INTERFACE FOR ELEVATOR SHUNT TRIP
- ⑫ INTERFACE FOR ELEVATOR SLIST TRIP (BATTERY)
- ⑬ INTERFACE FOR ELEVATOR CAB LIGHT (STEADY)
- ⑭ INTERFACE FOR ELEVATOR CAB LIGHT (FLASHING)
- ⑮ INTERFACE FOR RELEASE OF COMBINATION SMOKE FIRE DAMPER CIRCUITS FOR ISOLATION ROOMS ONLY.
- ⑯ INTERFACE FOR HVAC SHUTDOWN
- ⑰ INTERFACE FOR MONITORING OF DISCONNECT SWITCH
- ⑱ MONITOR MODULE TO MONITOR ASPIRATING SMOKE DETECTION PANEL
-PRE-ALARM -FIRE 2
-FIRE 1 -TROUBLE
- ⑲ CONTROL RELAY (GHTH-40) IS PROVIDED FOR ASPIRATING SMOKE DETECTION PANEL RESET
- ⑳ MONITOR MODULES TO MONITOR PREACTION PANEL
-ALARM
-SUPERVISORY
-TROUBLE
- ㉑ PROVIDE 120V AC, 200 AMPS DEDICATED CIRCUIT FOR THE POWER SUPPLY
- ㉒ CONTROL RELAY (GHTH-40) IS PROVIDED FOR DIMMER CONTROLS ACTIVATION.

7/20/12	DESIGN REVISION	-
11/21/11	DESIGN REVISION	-
7/21/11	DESIGN REVISION	-
05/02/11	FULLERTON FIRE DEPARTMENT CORRECTIONS	-
11/30/10	OSHA BACKLOG	LF
07/30/10	OSHA BACKLOG	LF
11/05/09	BACKGROUND REVISIONS	PK

Drawn:	H.JEANG
Checked:	-
Approved:	-

Date: 07.30.09

Scale: $0' - 1/4" = 1' - 0"$

[illegible]

1000

FIRE ALARM

FIRE ALARM
LEVEL 3

LEVEL 5

Job
Number:

440P-1

Project: CHILDRENS H

ORANGE COUNTY

455 SOUTH M

ORANGE, CALIFC

30 *Journal of Management Inquiry* 18(1)

Drawing Number: EE 2

LTS

[illegible]

This drawing and the information and design application herein contained is the property of SIEMENS BUILDING TECHNOLOGIES, Inc. and is loaned upon the express condition that the same be returned to SIEMENS BUILDING TECHNOLOGIES, Inc. upon request; all information herein contained shall be treated as secret and confidential; no reproduction of this drawing or part thereof shall be made without the written consent of SIEMENS BUILDING TECHNOLOGIES, Incorporated.



BUILDING ELECTRONIC CONTROLS, INC.
2246 Lindsay Way
Glendora, CA 91740
PHONE: (909) 305-1600
FAX #: (909) 305-1604
LICENSE NO.: 729805
CLASSIFICATION: E5, C-7, C10
EXPIRATION DATE: 11/30/2012
RICHARD TAYLOR



- NOTES:
- ① INTERFACE TO PATIENT ROOM BONE LIGHT, DOME LIGHT & POWER SHALL BE FURNISHED AND INSTALLED BY OTHERS.
 - ② NOT USED
 - ③ INTERFACE TO VEN DOOR / ROLL-DOWN DOOR / SHUTTER FOR RELEASE. EQUIPMENT & POWER SHALL BE FURNISHED AND INSTALLED BY OTHERS.
 - ④ INTERFACE FOR MONITORING STATUS OF EQUIPMENT.
 - ⑤ SYNCHRONIZING CONFIGURATION OF ALL PAD PANELS.
 - ⑥ KEY ACTIVATION & MONITORING / OTHERS MONITORING FOR PAD PANELS.
 - ⑦ INTERFACE FOR RELEASE OF MAGNETIC DOOR HOLD OPEN DEVICES.
 - ⑧ INTERFACE FOR RELEASE OF COMBINATION SMOKE FIRE DAMPER CIRCUITS EXCLUDING ISOLATION ROOMS.
 - ⑨ INTERFACE FOR ELEVATOR RECALL (PRIMARY).
 - ⑩ INTERFACE FOR ELEVATOR RECALL (ALT-RECALL).
 - ⑪ INTERFACE FOR ELEVATOR SHUNT TRIP.
 - ⑫ INTERFACE FOR ELEVATOR SHUNT TRIP (BATTERY).
 - ⑬ INTERFACE FOR ELEVATOR CAB LIGHT (STEADY).
 - ⑭ INTERFACE FOR ELEVATOR CAB LIGHT (FLASHING).
 - ⑮ INTERFACE FOR RELEASE OF COMBINATION SMOKE FIRE DAMPER CIRCUITS FOR ISOLATION ROOMS ONLY.
 - ⑯ INTERFACE FOR HVAC SHUTDOWN.
 - ⑰ INTERFACE FOR MONITORING OF DISCONNECT SWITCH.
 - ⑱ MONITOR MODULE TO MONITOR ASPIRATING SMOKE DETECTION PANEL.
 - ⑲ PRE-ALARM - FIRE 2 - TROUBLE
 - ⑳ CONTROL RELAY (HTRI-R) IS PROVIDED FOR ASPIRATING SMOKE DETECTION PANEL RESET.
 - ㉑ MONITOR MODULES TO MONITOR PREACTION PANEL.
 - ㉒ -ALARM - SUPERVISORY - TROUBLE
 - ㉓ PROVIDE 120V AC, 20 AMP DEDICATED CIRCUIT FOR THE POWER SUPPLY.
 - ㉔ CONTROL RELAY (HTRI-R) IS PROVIDED FOR DIMMER CONTROLS ACTIVATION.

- ☐ MXL ☐ VOICE ☐ XL3 ☐ SYSTEM3
☒ XLS ☐ FS-250 ☐ EST3 ☐ OTHER

OSHPD NO. #: IL-072072-30

Rev No.	Date	Remarks	Initial
1	07/20/12	DESIGN REVISION	
2	11/21/11	DESIGN REVISION	
3	07/21/11	DESIGN REVISION	
4	05/02/11	FULLERTON FIRE DEPARTMENT CORRECTIONS	
5	11/30/10	DISPATCH ROOM	LF
6	07/30/10	DISPATCH ROOM	LF
7	11/05/09	BACKGROUND REVISIONS	FM

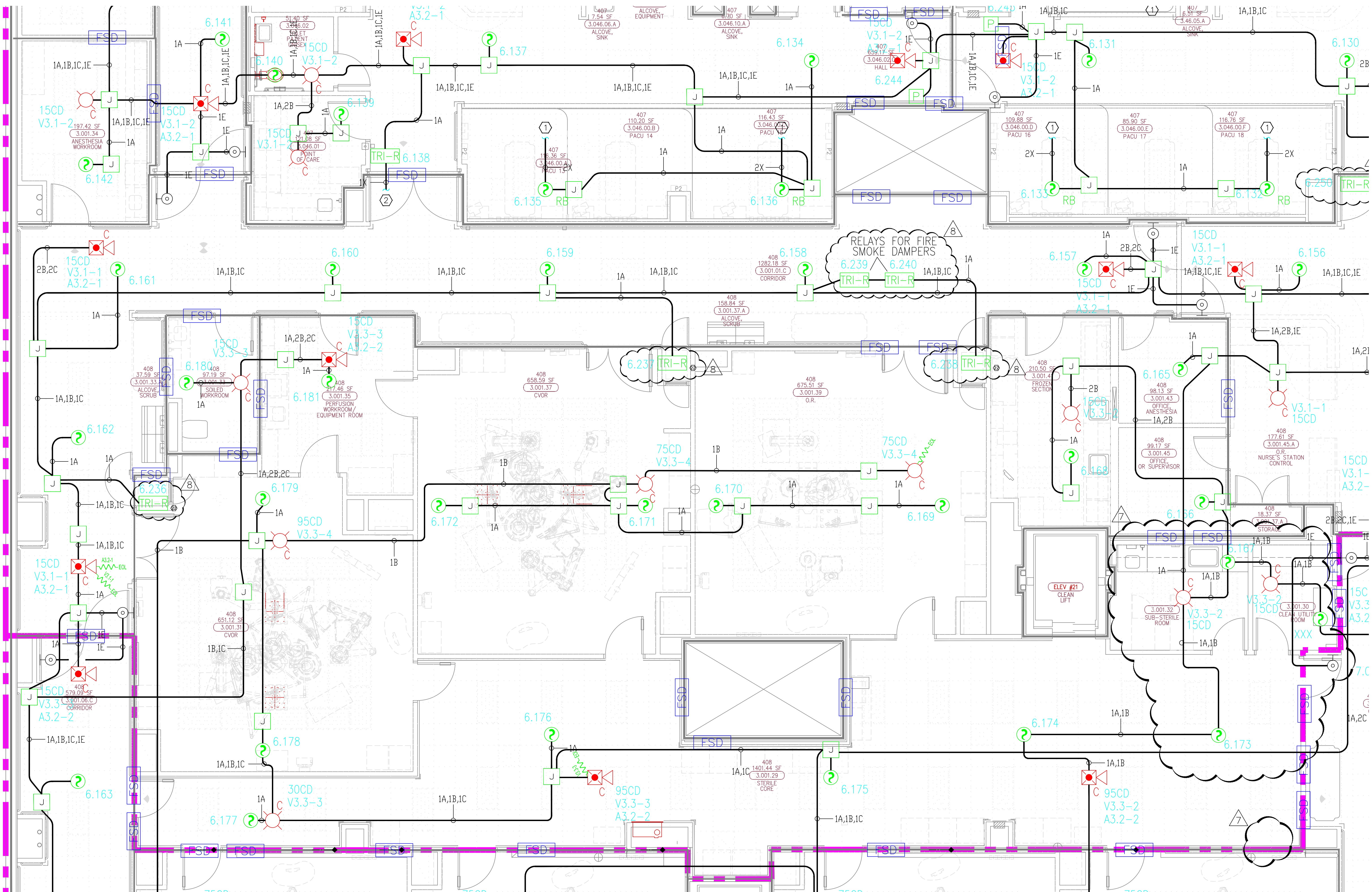
Drawn	H. JEANG
Checked	-
Approved	-
Date	07.30.09
Scale	0'-1/4" = 1'-0"

FIRE ALARM FLOORPLAN
LEVEL 3 - AREA J

Job Number: 440P-056306

Project: CHILDRENS HOSPITAL OF
ORANGE COUNTY - TOWER II
455 SOUTH MAIN STREET
ORANGE, CALIFORNIA 92668-3874

Drawing Number: EF3.3J



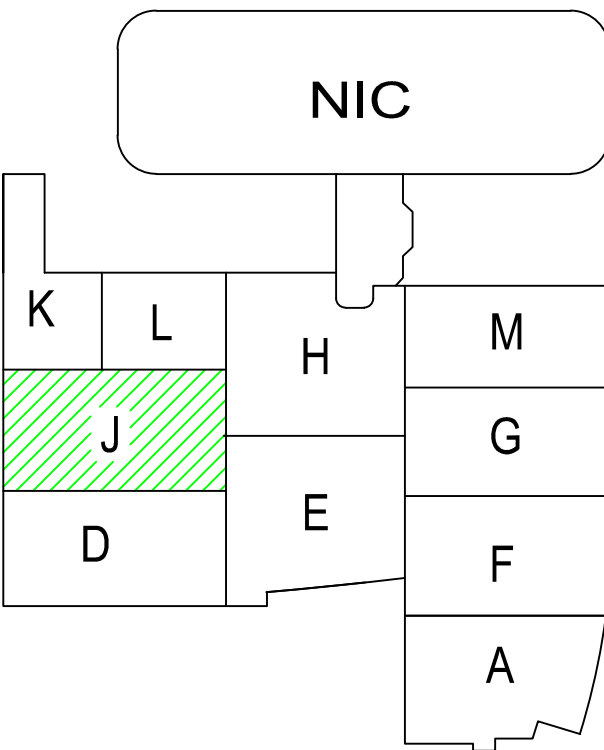
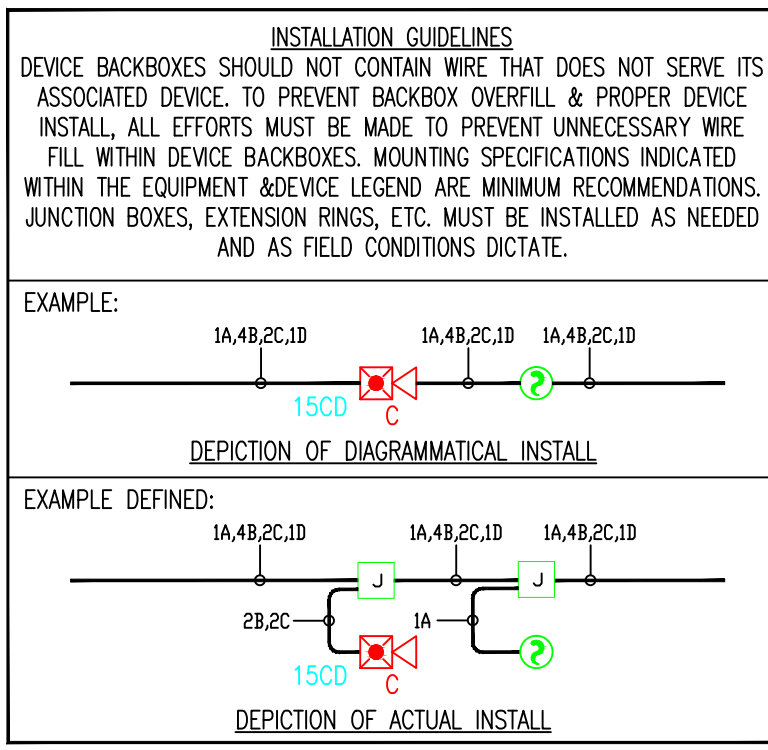
MCCARTHY APPROVAL

A. Approved as noted for Architectural Review ☐
B. Review and Re-submit ☐
C. Rejected ☐

This review is for general conformance with Plans and Specifications only. Any deviation from same not clearly noted by the Engineer herein shall not be construed as approval. Review shall not constitute a complete check of design or dimensions or shall be taken to release the Engineer of contractual responsibility for any error or deviation from contract requirements.

McCarthy

By: _____ Date: _____
SHEP DRAWING REFERENCE NO. _____



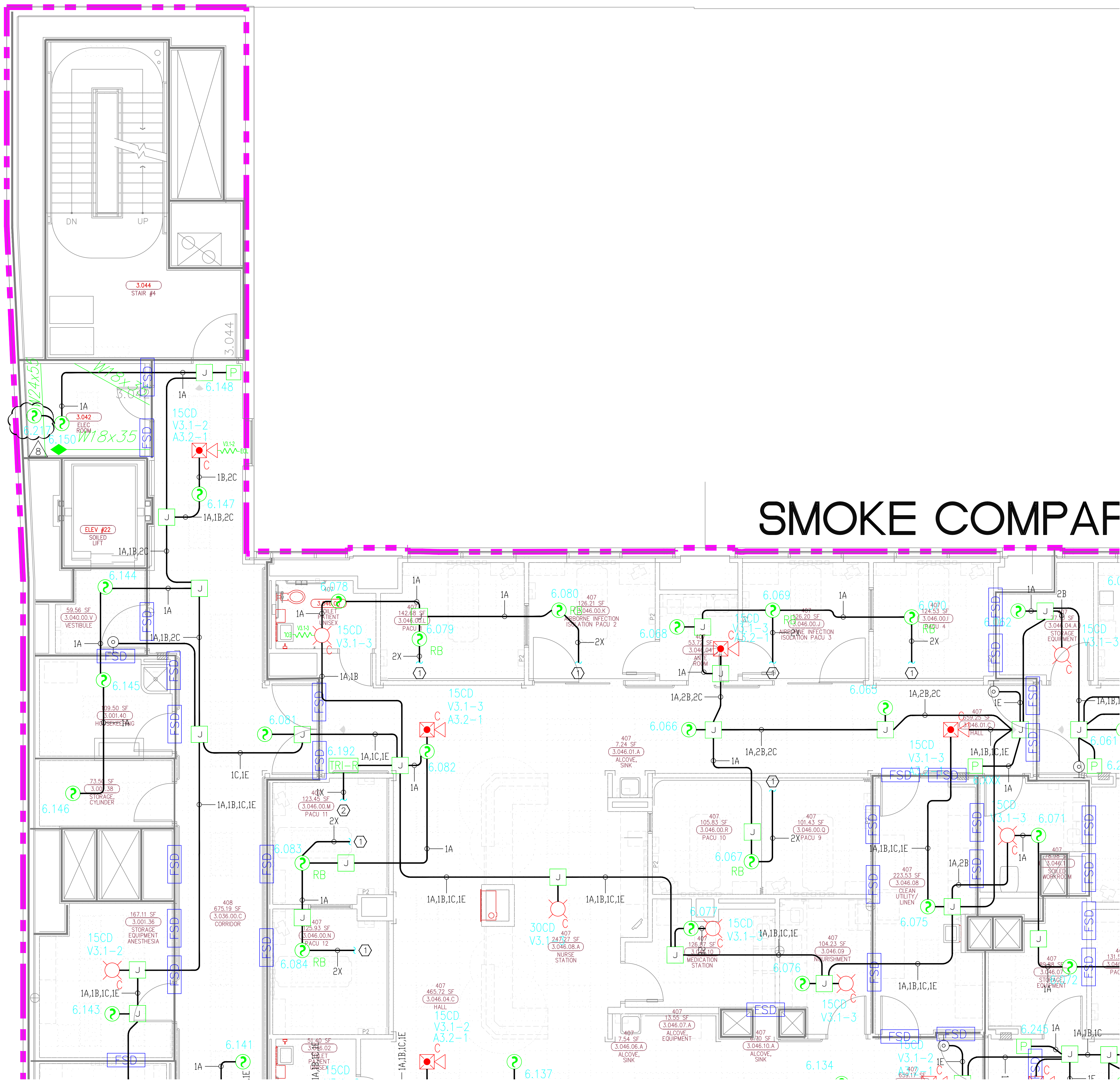
4) AS FIELD CONDITIONS DICTATE ACTUAL RACEWAY INSTALLATIONS, DEVICE BACK BOXES AND JUNCTION BOXES SHALL BE SIZED PER FIELD INSTALLING CONDITIONS. DEVICE BACK BOX SIZES INDICATED WITHIN THIS DRAWING PACKAGE ARE MINIMUM REQUIREMENTS ONLY. AN INCREASE IN BACK BOX DEPTH, ADDITION OF EXTENSION BOX/RING, ETC. MAY BE REQUIRED IN ORDER TO PROPERLY ACCOMMODATE FOR WIRE QUANTITIES INSTALLED WITHIN THE RACEWAY.

3) THE INSTALLATION OF DEVICE BACKBOXES & WIRE SHALL BE SIZED AND INSTALLED PER CEC. IN ADDITION SUCH BOXES & WIRE SHALL BE INSTALLED IN A MANNER AS TO ALLOW FOR THE EASE OF DEVICE INSTALLATION. THE INSTALLATION OF DEVICES WHICH REQUIRE EXCESSIVE FORCE, THE PINCHING OF WIRES, RESULT IN GROUND FAULTS, ETC. IN ORDER TO PROPERLY SEAT THE DEVICE TO IT'S FINISHED SURFACE SHALL BE CONSIDERED UNACCEPTABLE AND A NON-SIEMENS INSTALLATION STANDARD.

2) ADDITIONAL JUNCTION BOXES NOT SHOWN WITHIN THESE PLANS MAY BE REQUIRED TO ACCOMMODATE PROPER RACEWAY INSTALLATIONS & SIZING. IT IS THE ELECTRICAL CONTRACTORS RESPONSIBILITY TO DETERMINE THE NECESSARY AMOUNT OF JUNCTION BOXES/EXTENSION RINGS REQUIRED.

1) ALL RACEWAY RUNS INDICATED WITHIN THIS DRAWING PACKAGE ARE SHOWN DIAGRAMMATICALLY AND ARE FOR CIRCUITING PURPOSES ONLY. ALL RUNS SHOWN SHOULD NOT SERVE IN ANY WAY AS AN ACTUAL ROUTING GUIDE FOR INSTALLATION OF RACEWAYS. EXACT INSTALL LOCATION SHALL BE FIELD DETERMINED.

4.) THE INSTALLATION OF DEVICE BACKBOXES & WIRE SHALL BE SIZED AND INSTALLED PER CEC. IN ADDITION SUCH BOXES & WIRE SHALL BE INSTALLED IN A MANNER AS TO ALLOW FOR THE EASE OF DEVICE INSTALLATION. THE INSTALLATION OF DEVICES WHICH REQUIRE EXCESSIVE FORCE, THE PINCHING OF WIRES, RESULT IN GROUND FAULTS, ETC. IN ORDER TO PROPERLY SEAT THE DEVICE TO IT'S FINISHED SURFACE SHALL BE CONSIDERED UNACCEPTABLE AND A NON-SIEMENS INSTALLATION STANDARD.



SMOKE COMPAF

By _____ Date _____

LEGEND

- (S) INTERFACES FOR MONITORING OF DISCONNECT SWITCH
- (M) MONITOR MODULE TO MONITOR ASPIRATING SMOKE DETECTION PANEL.
- FIRE-ALARM -FIRE 2
- FIRE 1 -TROUBLE
- (C) CONTROL RELAY (GTRI-RD) IS PROVIDED FOR ASPIRATING SMOKE DETECTION PANEL RESET.
- (M) MONITOR MODULES TO MONITOR PREACTION PANEL ALARM
- SUPERVISORY
- TROUBLE
- (P) PROVIDE 120V AC , 200 AMPS DEDICATED CIRCUIT FOR THE POWER SUPPLY.
- (C) CONTROL RELAY (GTRI-RD) IS PROVIDED FOR DIMMER CONTROLS ACTIVATION

```

graph TD
    S[S] --- M1[M]
    M1 --- C1[C]
    C1 --- M2[M]
    M2 --- P[P]
    P --- C2[C]
    C2 --- M3[M]
    M3 --- C3[C]
    C3 --- M4[M]
    M4 --- C4[C]
    C4 --- M5[M]
    M5 --- C5[C]
    C5 --- M6[M]
    M6 --- C6[C]
    C6 --- M7[M]
    M7 --- C7[C]
    C7 --- M8[M]
    M8 --- C8[C]
    C8 --- M9[M]
    M9 --- C9[C]
    C9 --- M10[M]
    M10 --- C10[C]
    C10 --- M11[M]
    M11 --- C11[C]
    C11 --- M12[M]
    M12 --- C12[C]
    C12 --- M13[M]
    M13 --- C13[C]
    C13 --- M14[M]
    M14 --- C14[C]
    C14 --- M15[M]
    M15 --- C15[C]
    C15 --- M16[M]
    M16 --- C16[C]
    C16 --- M17[M]
    M17 --- C17[C]
    C17 --- M18[M]
    M18 --- C18[C]
    C18 --- M19[M]
    M19 --- C19[C]
    C19 --- M20[M]
    M20 --- C20[C]
    C20 --- M21[M]
    M21 --- C21[C]
    C21 --- M22[M]
    M22 --- C22[C]
    C22 --- M23[M]
    M23 --- C23[C]
    C23 --- M24[M]
    M24 --- C24[C]
    C24 --- M25[M]
    M25 --- C25[C]
    C25 --- M26[M]
    M26 --- C26[C]
    C26 --- M27[M]
    M27 --- C27[C]
    C27 --- M28[M]
    M28 --- C28[C]
    C28 --- M29[M]
    M29 --- C29[C]
    C29 --- M30[M]
    M30 --- C30[C]
    C30 --- M31[M]
    M31 --- C31[C]
    C31 --- M32[M]
    M32 --- C32[C]
    C32 --- M33[M]
    M33 --- C33[C]
    C33 --- M34[M]
    M34 --- C34[C]
    C34 --- M35[M]
    M35 --- C35[C]
    C35 --- M36[M]
    M36 --- C36[C]
    C36 --- M37[M]
    M37 --- C37[C]
    C37 --- M38[M]
    M38 --- C38[C]
    C38 --- M39[M]
    M39 --- C39[C]
    C39 --- M40[M]
    M40 --- C40[C]
    C40 --- M41[M]
    M41 --- C41[C]
    C41 --- M42[M]
    M42 --- C42[C]
    C42 --- M43[M]
    M43 --- C43[C]
    C43 --- M44[M]
    M44 --- C44[C]
    C44 --- M45[M]
    M45 --- C45[C]
    C45 --- M46[M]
    M46 --- C46[C]
    C46 --- M47[M]
    M47 --- C47[C]
    C47 --- M48[M]
    M48 --- C48[C]
    C48 --- M49[M]
    M49 --- C49[C]
    C49 --- M50[M]
    M50 --- C50[C]
    C50 --- M51[M]
    M51 --- C51[C]
    C51 --- M52[M]
    M52 --- C52[C]
    C52 --- M53[M]
    M53 --- C53[C]
    C53 --- M54[M]
    M54 --- C54[C]
    C54 --- M55[M]
    M55 --- C55[C]
    C55 --- M56[M]
    M56 --- C56[C]
    C56 --- M57[M]
    M57 --- C57[C]
    C57 --- M58[M]
    M58 --- C58[C]
    C58 --- M59[M]
    M59 --- C59[C]
    C59 --- M60[M]
    M60 --- C60[C]
    C60 --- M61[M]
    M61 --- C61[C]
    C61 --- M62[M]
    M62 --- C62[C]
    C62 --- M63[M]
    M63 --- C63[C]
    C63 --- M64[M]
    M64 --- C64[C]
    C64 --- M65[M]
    M65 --- C65[C]
    C65 --- M66[M]
    M66 --- C66[C]
    C66 --- M67[M]
    M67 --- C67[C]
    C67 --- M68[M]
    M68 --- C68[C]
    C68 --- M69[M]
    M69 --- C69[C]
    C69 --- M70[M]
    M70 --- C70[C]
    C70 --- M71[M]
    M71 --- C71[C]
    C71 --- M72[M]
    M72 --- C72[C]
    C72 --- M73[M]
    M73 --- C73[C]
    C73 --- M74[M]
    M74 --- C74[C]
    C74 --- M75[M]
    M75 --- C75[C]
    C75 --- M76[M]
    M76 --- C76[C]
    C76 --- M77[M]
    M77 --- C77[C]
    C77 --- M78[M]
    M78 --- C78[C]
    C78 --- M79[M]
    M79 --- C79[C]
    C79 --- M80[M]
    M80 --- C80[C]
    C80 --- M81[M]
    M81 --- C81[C]
    C81 --- M82[M]
    M82 --- C82[C]
    C82 --- M83[M]
    M83 --- C83[C]
    C83 --- M84[M]
    M84 --- C84[C]
    C84 --- M85[M]
    M85 --- C85[C]
    C85 --- M86[M]
    M86 --- C86[C]
    C86 --- M87[M]
    M87 --- C87[C]
    C87 --- M88[M]
    M88 --- C88[C]
    C88 --- M89[M]
    M89 --- C89[C]
    C89 --- M90[M]
    M90 --- C90[C]
    C90 --- M91[M]
    M91 --- C91[C]
    C91 --- M92[M]
    M92 --- C92[C]
    C92 --- M93[M]
    M93 --- C93[C]
    C93 --- M94[M]
    M94 --- C94[C]
    C94 --- M95[M]
    M95 --- C95[C]
    C95 --- M96[M]
    M96 --- C96[C]
    C96 --- M97[M]
    M97 --- C97[C]
    C97 --- M98[M]
    M98 --- C98[C]
    C98 --- M99[M]
    M99 --- C99[C]
    C99 --- M100[M]
    M100 --- C100[C]
    C100 --- M101[M]
    M101 --- C101[C]
    C101 --- M102[M]
    M102 --- C102[C]
    C102 --- M103[M]
    M103 --- C103[C]
    C103 --- M104[M]
    M104 --- C104[C]
    C104 --- M105[M]
    M105 --- C105[C]
    C105 --- M106[M]
    M106 --- C106[C]
    C106 --- M107[M]
    M107 --- C107[C]
    C107 --- M108[M]
    M108 --- C108[C]
    C108 --- M109[M]
    M109 --- C109[C]
    C109 --- M110[M]
    M110 --- C110[C]
    C110 --- M111[M]
    M111 --- C111[C]
    C111 --- M112[M]
    M112 --- C112[C]
    C112 --- M113[M]
    M113 --- C113[C]
    C113 --- M114[M]
    M114 --- C114[C]
    C114 --- M115[M]
    M115 --- C115[C]
    C115 --- M116[M]
    M116 --- C116[C]
    C116 --- M117[M]
    M117 --- C117[C]
    C117 --- M118[M]
    M118 --- C118[C]
    C118 --- M119[M]
    M119 --- C119[C]
    C119 --- M120[M]
    M120 --- C120[C]
    C120 --- M121[M]
    M121 --- C121[C]
    C121 --- M122[M]
    M122 --- C122[C]
    C122 --- M123[M]
    M123 --- C123[C]
    C123 --- M124[M]
    M124 --- C124[C]
    C124 --- M125[M]
    M125 --- C125[C]
    C125 --- M126[M]
    M126 --- C126[C]
    C126 --- M127[M]
    M127 --- C127[C]
    C127 --- M128[M]
    M128 --- C128[C]
    C128 --- M129[M]
    M129 --- C129[C]
    C129 --- M130[M]
    M130 --- C130[C]
    C130 --- M131[M]
    M131 --- C131[C]
    C131 --- M132[M]
    M132 --- C132[C]
    C132 --- M133[M]
    M133 --- C133[C]
    C133 --- M134[M]
    M134 --- C134[C]
    C134 --- M135[M]
    M135 --- C135[C]
    C135 --- M136[M]
    M136 --- C136[C]
    C136 --- M137[M]
    M137 --- C137[C]
    C137 --- M138[M]
    M138 --- C138[C]
    C138 --- M139[M]
    M139 --- C139[C]
    C139 --- M140[M]
    M140 --- C140[C]
    C140 --- M141[M]
    M141 --- C141[C]
    C141 --- M142[M]
    M142 --- C142[C]
    C142 --- M143[M]
    M143 --- C143[C]
    C143 --- M144[M]
    M144 --- C144[C]
    C144 --- M145[M]
    M145 --- C145[C]
    C145 --- M146[M]
    M146 --- C146[C]
    C146 --- M147[M]
    M147 --- C147[C]
    C147 --- M148[M]
    M148 --- C148[C]
    C148 --- M149[M]
    M149 --- C149[C]
    C149 --- M150[M]
    M150 --- C150[C]
    C150 --- M151[M]
    M151 --- C151[C]
    C151 --- M152[M]
    M152 --- C152[C]
    C152 --- M153[M]
    M153 --- C153[C]
    C153 --- M154[M]
    M154 --- C154[C]
    C154 --- M155[M]
    M155 --- C155[C]
    C155 --- M156[M]
    M156 --- C156[C]
    C156 --- M157[M]
    M157 --- C157[C]
    C157 --- M158[M]
    M158 --- C158[C]
    C158 --- M159[M]
    M159 --- C159[C]
    C159 --- M160[M]
    M160 --- C160[C]
    C160 --- M161[M]
    M161 --- C161[C]
    C161 --- M162[M]
    M162 --- C162[C]
    C162 --- M163[M]
    M1
```

INSTALLATION GUIDELINES

DEVICE BACKBOXES SHOULD NOT CONTAIN WIRE THAT DOES NOT SERVE ITS ASSOCIATED DEVICE. TO PREVENT BACKBOX OVERFILL & PROPER DEVICE INSTALL, ALL EFFORTS MUST BE MADE TO PREVENT UNNECESSARY WIRE FILL WITHIN DEVICE BACKBOXES. WIRING SPECIFICATIONS INDICATED WITHIN THE EQUIPMENT ABOVE LEGEND ARE MINIMUM RECOMMENDATIONS. JUNCTION BOXES, EXTENSION RINGS, ETC. MUST BE INSTALLED AS NEEDED AND AS FIELD CONDITIONS DICTATE.

EXAMPLE:

DEPICTION OF DIAGRAMMATICAL INSTALL

EXAMPLE DEFINED:

DEPICTION OF ACTUAL INSTALL

<input type="checkbox"/> MXL	<input type="checkbox"/> VOICE	<input type="checkbox"/> XL3	<input type="checkbox"/> SYSTEM
<input checked="" type="checkbox"/> XLS	<input type="checkbox"/> FS-250	<input type="checkbox"/> EST3	<input type="checkbox"/> OTHER

OSHPD NO.#: IL-072072-30

△	07/20/12	DESIGN REVISION	-
△	11/21/11	DESIGN REVISION	-
△	07/21/11	DESIGN REVISION	-
△	05/02/11	FULLERTON FIRE DEPARTMENT CORRECTIONS	-
△	11/30/10	OSHPD BACKGROUND	L
△	07/30/10	OSHPD BACKGROUND	L
△	11.05.09	BACKGROUND REVISIONS	P

Rev No.	Date	Remarks	Initials
---------	------	---------	----------

Drawn: H.JEANG

Checked: -

Approved: -

Date: 07.30.09

Scale: $0 = 1/4 \quad = \quad 1 = 0$

FIRE ALARM FLOORPLAN

LEVEL 3 - AREA K

loh

Number: 44OP-056306

1101 000000

Project: SALE OF THE HOUSEHOLD OF

CHILDRENS HOSPITAL OF
ORANGE COUNTY, TOWER 11

ORANGE COUNTY - TOWER II
455 SOUTH MAIN STREET

455 SOUTH MAIN STREET
ORANGE, CALIFORNIA 92668-2874

ORANGE, CALIFORNIA 92868-3874

Drawing Number: _____

EF3.3K

100%

- NOTES:
- ① INTERFACE TO PATIENT ROOM BONE LIGHT, DOME LIGHT & POWER SHALL BE FURNISHED AND INSTALLED BY OTHERS.
 - ② NOT USED
 - ③ INTERFACE TO VEN DOOR / ROLL-UP DOWN DOOR / SHUTTER FOR RELEASE EQUIPMENT & POWER SHALL BE FURNISHED AND INSTALLED BY OTHERS.
 - ④ INTERFACE FOR MONITORING STATUS OF EQUIPMENT.
 - ⑤ SYNCHRONIZING CONFIGURATION OF ALL PAD PANELS.
 - ⑥ HSP ACTIVATION & MONITORING / HTRIS MONITORING FOR PAD PANELS.
 - ⑦ INTERFACE FOR RELEASE OF MAGNETIC DOOR HOLD OPEN DEVICES.
 - ⑧ INTERFACE FOR RELEASE OF COMBINATION SMOKE FIRE DAMPER CIRCUITS (EXCLUDING ISOLATION ROOMS).
 - ⑨ INTERFACE FOR ELEVATOR RECALL (PRIMARY).
 - ⑩ INTERFACE FOR ELEVATOR RECALL (ALT-RECALL).
 - ⑪ INTERFACE FOR ELEVATOR SHUNT TRIP.
 - ⑫ INTERFACE FOR ELEVATOR SHUNT TRIP (BATTERY).
 - ⑬ INTERFACE FOR ELEVATOR CAB LIGHT (STEADY).
 - ⑭ INTERFACE FOR ELEVATOR CAB LIGHT (FLASHING).
 - ⑮ INTERFACE FOR RELEASE OF COMBINATION SMOKE FIRE DAMPER CIRCUITS FOR ISOLATION ROOMS ONLY.
 - ⑯ INTERFACE FOR HVAC SHUTDOWN.
 - ⑰ INTERFACE FOR MONITORING OF DISCONNECT SWITCH.
 - ⑱ MONITOR MODULE TO MONITOR ASPIRATING SMOKE DETECTION PANEL.
-PRE-ALARM
-FIRE 2
-TROUBLE
 - ⑲ CONTROL RELAY (HTRIS) IS PROVIDED FOR ASPIRATING SMOKE DETECTION PANEL RESET.
 - ⑳ MONITOR MODULES TO MONITOR PREACTION PANEL.
-ALARM
-SUPERVISORY
-TROUBLE
 - ㉑ PROVIDE 120V AC - 200 AMP DEDICATED CIRCUIT FOR THE POWER SUPPLY.
 - ㉒ CONTROL RELAY (HTRIS) IS PROVIDED FOR DIMMER CONTROLS ACTIVATION.

MXL VOICE XL3 SYSTEMS
XLS FS-250 EST3 OTHER

OSHPD NO. #: IL-072072-30

Rev No.	Date	Remarks	Initial
1	07/20/12	DESIGN REVISION	
2	11/27/11	DESIGN REVISION	
3	07/21/11	DESIGN REVISION	
4	05/02/11	FULLERTON FIRE DEPARTMENT CORRECTIONS	
5	11/30/10	DISPATCH	LF
6	07/30/10	DISPATCH	LF
7	11/05/09	BACKGROUND REVISIONS	FM

Rev No. Date Remarks Initial

Drawn: H.JEANG

Checked: -

Approved: -

Date: 07.30.09

Scale: 0'-1/4" = 1'-0"

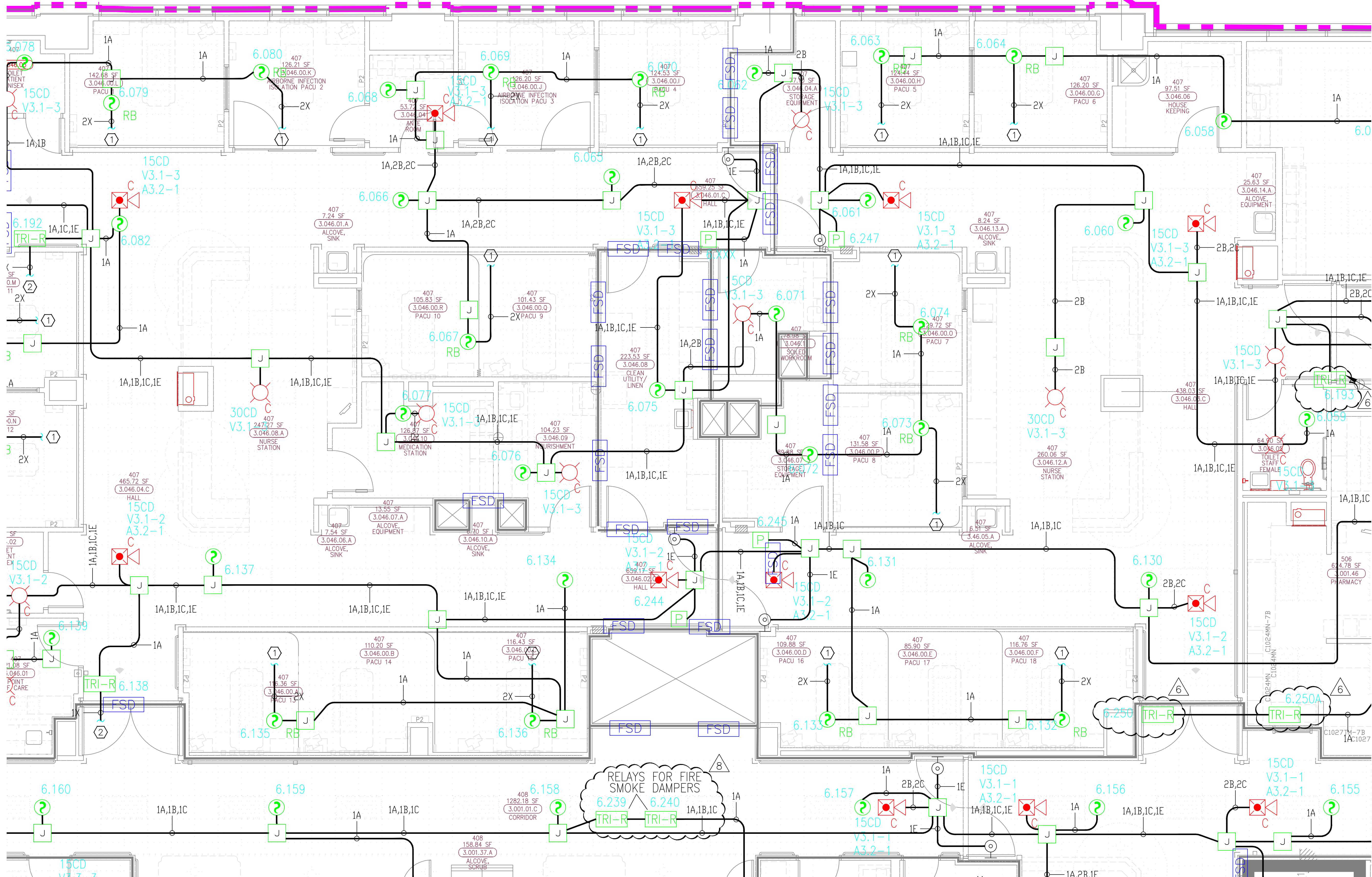
FIRE ALARM FLOORPLAN
LEVEL 3 - AREA L

Job Number: 440P-056306

Project: CHILDRENS HOSPITAL OF
ORANGE COUNTY - TOWER II
455 SOUTH MAIN STREET
ORANGE, CALIFORNIA 92668-3874

Drawing Number: EF3.3L

SMOKE COMPARTMENT D



This drawing and the information and design application herein contained is the property of SIEMENS BUILDING TECHNOLOGIES, Inc. and is loaned upon the express condition that the same be returned to SIEMENS BUILDING TECHNOLOGIES, Inc. upon request; all information herein contained shall be treated as secret and confidential; no reproduction of this drawing or part thereof shall be made without the written consent of SIEMENS BUILDING TECHNOLOGIES, Incorporated.



BUILDING ELECTRONIC CONTROLS, INC.

2246 Lindsay Way
Glendora, CA 91740

PHONE: (909) 305-1600
FAX #: (909) 305-1604

LICENSE NO.: 729805
CLASSIFICATION: E1-C-7 C10
EXPIRATION DATE: 11/30/2012
RICHARD TAYLOR



- NOTES:
- ① INTERFACE TO PATIENT ROOM DOOR LIGHT, DOME LIGHT & POWER SHALL BE FURNISHED AND INSTALLED BY OTHERS.
 - ② NOT USED
 - ③ INTERFACE TO VEN DOOR / ROLL-UP DOOR / SHUTTER FOR RELEASE. EQUIPMENT & POWER SHALL BE FURNISHED AND INSTALLED BY OTHERS.
 - ④ INTERFACE FOR MONITORING STATUS OF EQUIPMENT.
 - ⑤ SYNCHRONIZING CONFIGURATION OF ALL PAD PANELS.
 - ⑥ HPIV ACTIVATION & MONITORING / HPIV'S MONITORING FOR PAD PANELS.
 - ⑦ INTERFACE FOR RELEASE OF MAGNETIC DOOR HOLD OPEN DEVICES.
 - ⑧ INTERFACE FOR RELEASE OF COMBINATION SMOKE FIRE DAMPER CIRCUITS (EXCLUDING ISOLATION ROOMS).
 - ⑨ INTERFACE FOR ELEVATOR RECALL (PRIMARY)
 - ⑩ INTERFACE FOR ELEVATOR RECALL (ALT-RECALL)
 - ⑪ INTERFACE FOR ELEVATOR SHUNT TRIP
 - ⑫ INTERFACE FOR ELEVATOR SHUNT TRIP (BATTERY)
 - ⑬ INTERFACE FOR ELEVATOR CAB LIGHT (STEADY)
 - ⑭ INTERFACE FOR ELEVATOR CAB LIGHT (FLASHING)
 - ⑮ INTERFACE FOR RELEASE OF COMBINATION SMOKE FIRE DAMPER CIRCUITS FOR ISOLATION ROOMS ONLY.
 - ⑯ INTERFACE FOR HVAC SHUTDOWN
 - ⑰ INTERFACE FOR MONITORING OF DISCONNECT SWITCH
 - ⑱ MONITOR MODULE TO MONITOR ASPIRATING SMOKE DETECTION PANEL.
-PRE-ALARM -FIRE
-FIRE 1 -TROUBLE
 - ⑲ CONTROL RELAY (HTRI-R) IS PROVIDED FOR ASPIRATING SMOKE DETECTION PANEL RESET
 - ⑳ MONITOR MODULES TO MONITOR PREACTION PANEL
-ALARM
-TROUBLE
-SUPERVISORY
 - ㉑ PROVIDE 120V AC, 20 AMP DEDICATED CIRCUIT FOR THE POWER SUPPLY
 - ㉒ CONTROL RELAY (HTRI-R) IS PROVIDED FOR DIMMER CONTROLS ACTIVATION

MXL XLS VOICE FS-250 XL3 EST3 SYSTEMS OTHER

OSHPD NO. #: IL-072072-30

Rev No.	Date	Remarks	Initial
1	07/20/12	DESIGN REVISION	
2	11/21/11	DEPARTMENT OF HEALTH	
3	07/21/11	DEPARTMENT OF HEALTH	
4	05/02/11	FULLERTON FIRE DEPARTMENT CORRECTIONS	
5	11/30/10	DISPATCH CENTER	LF
6	07/30/10	WASH STATE BACKLOG	LF
7	11/05/09	BACKGROUND REVISIONS	FM

Rev No. Date Remarks Initial

Drawn: H.JEANG

Checked: -

Approved: -

Date: 07.30.09

Scale: 0'-1/4" = 1'-0"

FIRE ALARM FLOORPLAN
LEVEL 3 - AREA M

Job Number: 440P-056306

Project: CHILDRENS HOSPITAL OF
ORANGE COUNTY - TOWER II
455 SOUTH MAIN STREET
ORANGE, CALIFORNIA 92668-3874

Drawing Number: EF3.3M

