

SIEMENS

CALIFORNIA STATE CONTRACTORS
LICENSE NO.: #758796 - B/ C10/ C16/ C20

Siemens Building Technologies, Inc.
FIS FIRE/LIFE SAFETY DIVISION
10775 Business Center Drive
Cypress, California 90630 USA
Phone: (714) 761-2200
Fax: (714) 220-4958

This drawing and the information and design application herein contained is the property of SIEMENS BUILDING TECHNOLOGIES, Inc. and is loaned upon the express condition that the same be returned to SIEMENS BUILDING TECHNOLOGIES, Inc. upon request; all information herein contained shall be treated as secret and confidential; no reproduction of this drawing or part thereof shall be made without the written consent of SIEMENS BUILDING TECHNOLOGIES, Incorporated.



BUILDING ELECTRONIC CONTROLS, INC.
2246 Lindsay Way
Glendora, CA 91740
PHONE: (909) 305-1600
FAX #: (909) 305-1604
LICENSE NO.: 729805
CLASSIFICATION: CS-C-7 C10
EXPIRATION DATE: 11/30/2012
RICHARD TAYLOR



- NOTES:
- INTERFERENCE TO PATIENT ROOM BONE LIGHT, DOME LIGHT & POWER SHALL BE FURNISHED AND INSTALLED BY OTHERS.
 - NOT USED
 - INTERFERENCE TO VEN DOOR / ROLL-DOWN DOOR / SHUTTER FOR RELEASE EQUIPMENT & POWER SHALL BE FURNISHED AND INSTALLED BY OTHERS.
 - INTERFERENCE FOR MONITORING STATUS OF EQUIPMENT.
 - SYNCHRONIZING CONFIGURATION OF ALL PAD PANELS.
 - KEY ACTIVATION & MONITORING / GFI-SS MONITORING FOR PAD PANELS.
 - INTERFERENCE FOR RELEASE OF MAGNETIC DOOR HOLD OPEN DEVICES.
 - INTERFERENCE FOR RELEASE OF COMBINATION SMOKE FIRE DAMPER CIRCUITS (EXCLUDING ISOLATION ROOMS).
 - INTERFERENCE FOR ELEVATOR RECALL (PRIMARY)
 - INTERFERENCE FOR ELEVATOR RECALL (ALT-RECALL)
 - INTERFERENCE FOR ELEVATOR SHUNT TRIP
 - INTERFERENCE FOR ELEVATOR SHUNT TRIP (BATTERY)
 - INTERFERENCE FOR ELEVATOR CAB LIGHT (STEADY)
 - INTERFERENCE FOR ELEVATOR CAB LIGHT (FLASHING)
 - INTERFERENCE FOR RELEASE OF COMBINATION SMOKE FIRE DAMPER CIRCUITS FOR ISOLATION ROOMS ONLY.
 - INTERFERENCE FOR HVAC SHUTDOWN
 - INTERFERENCE FOR MONITORING OF DISCONNECT SWITCH
 - MONITOR MODULE TO MONITOR ASPIRATING SMOKE DETECTION PANEL.
 - FIRE 2
 - FIRE 1
 - TROUBLE
 - CONTROL RELAY (GFI-SS) IS PROVIDED FOR ASPIRATING SMOKE DETECTION PANEL RESET
 - MONITOR MODULES TO MONITOR PREACTION PANEL.
 - ALARM
 - SUPERVISORY
 - TROUBLE
 - PROVIDE 120V AC, 20 AMP DEDICATED CIRCUIT FOR THE POWER SUPPLY
 - CONTROL RELAY (GFI-SS) IS PROVIDED FOR DIMMER CONTROLS ACTIVATION

MCCARTHY APPROVAL

A. Approved as noted for Architectural Review
B. Review and Rejected
C. Rejected

This review is for general conformance with Plans and Specifications only. Any deviations from same not clearly noted by the Engineer have not been reviewed. Reviewer shall not constitute a complete check of detailed drawings or plans to verify the accuracy of the same or to assume responsibility for any error or deviation from contract requirements.

McCarthy

By: _____ Date: _____
CHOP DRAWING REFERENCE NO. _____

MXL VOICE XL3 SYSTEMS
XLS FS-250 EST3 OTHER

OSHPD NO. #: IL-072072-30

Rev No.	Date	Revision	By	Check
1	07/20/12	DESIGN REVISION		
2	11/27/11	DESIGN REVISION		
3	07/21/11	DESIGN REVISION		
4	05/02/11	FULLERTON FIRE DEPARTMENT CORRECTIONS		
5	11/30/10	DESIGN REVISION		
6	07/30/10	DESIGN REVISION		
7	11/05/09	BACKGROUND REVISIONS		

Rev No. Date Remarks Initial

Drawn: H.JEANG

Checked: -

Approved: -

Date: 07.30.09

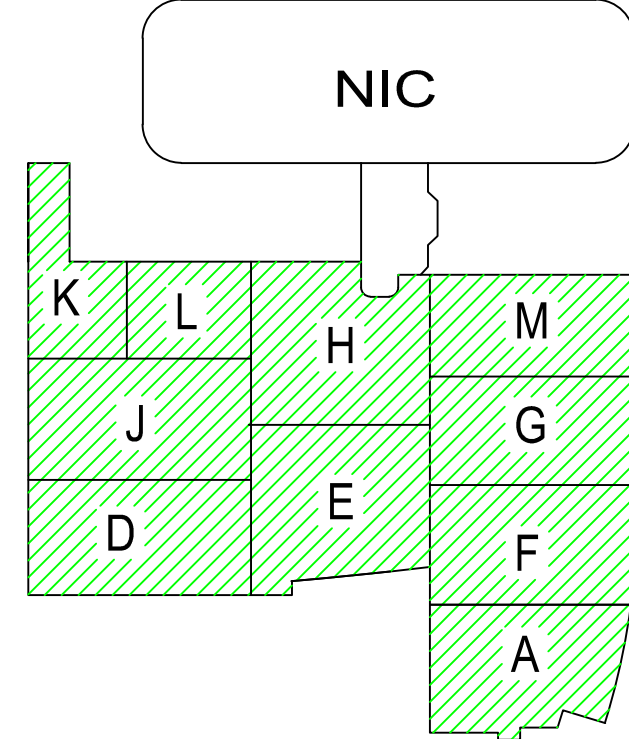
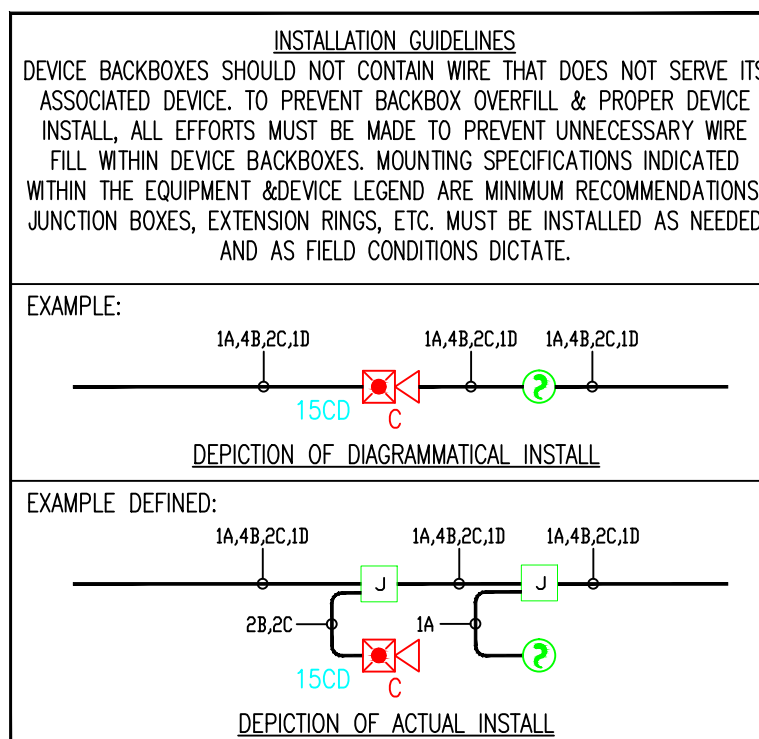
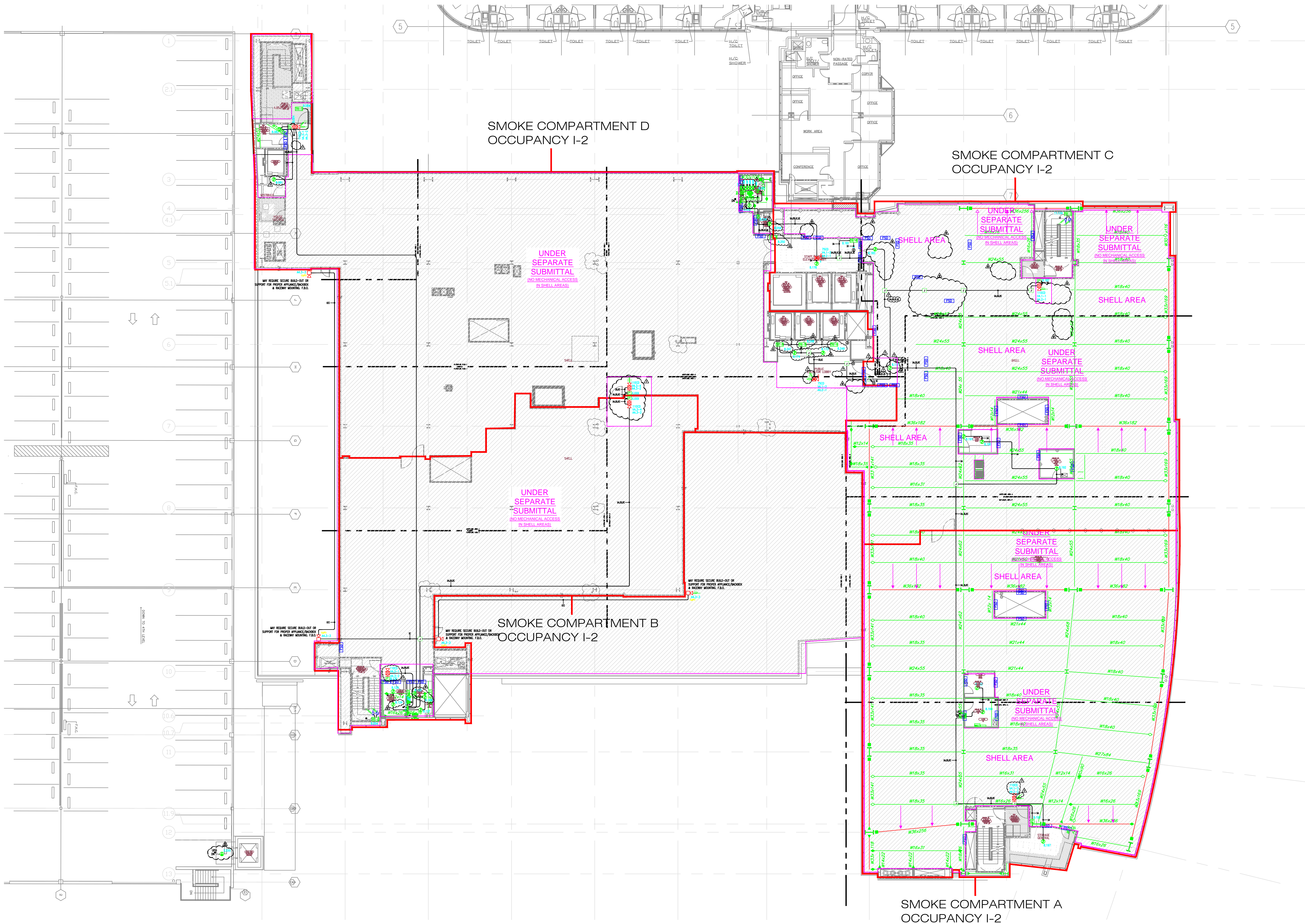
Scale: 0'-1/16" = 1'-0"

FIRE ALARM FLOORPLAN
LEVEL 4 - COMPOSITE

Job Number: 440P-056306

Project: CHILDRENS HOSPITAL OF
ORANGE COUNTY - TOWER II
455 SOUTH MAIN STREET
ORANGE, CALIFORNIA 92668-3874

Drawing Number: EF1.40



Key Plan

NORTH



4.) AS FIELD CONDITIONS DICTATE ACTUAL RACEWAY INSTALLATIONS, DEVICE BACK BOXES AND JUNCTION BOXES SHALL BE SIZED PER FIELD INSTALLING CONDITIONS. DEVICE BACK BOX SIZES INDICATED WITHIN THIS DRAWING PACKAGE ARE MINIMUM REQUIREMENTS ONLY. AN INCREASE IN BACK BOX DEPTH, ADDITION OF EXTENSION BOX/RING, ETC. MAY BE REQUIRED IN ORDER TO PROPERLY ACCOMMODATE FOR WIRE QUANTITIES INSTALLED WITHIN THE RACEWAY.

3.) THE INSTALLATION OF DEVICE BACKBOXES & WIRE SHALL BE SIZED AND INSTALLED PER CEC. IN ADDITION SUCH BOXES & WIRE SHALL BE INSTALLED IN A MANNER AS TO ALLOW FOR THE EASE OF DEVICE INSTALLATION. THE INSTALLATION OF DEVICES WHICH REQUIRE EXCESSIVE FORCE, THE PINCHING OF WIRES, RESULT IN GROUND FAULTS, ETC. IN ORDER TO PROPERLY SEAT THE DEVICE TO IT'S FINISHED SURFACE SHALL BE CONSIDERED UNACCEPTABLE AND A NON-SIEMENS INSTALLATION STANDARD.

2.) ADDITIONAL JUNCTION BOXES NOT SHOWN WITHIN THESE PLANS MAY BE REQUIRED TO ACCOMMODATE PROPER RACEWAY INSTALLATIONS & SIZING. IT IS THE ELECTRICAL CONTRACTORS RESPONSIBILITY TO DETERMINE THE NECESSARY AMOUNT OF JUNCTION BOXES/EXTENSION RINGS REQUIRED.

1.) ALL RACEWAY RUNS INDICATED WITHIN THIS DRAWING PACKAGE ARE SHOWN DIAGRAMMATICALLY AND ARE FOR CIRCUITING PURPOSES ONLY. ALL RUNS SHOWN SHOULD NOT SERVE IN ANY WAY AS AN ACTUAL ROUTING GUIDE FOR INSTALLATION OF RACEWAYS. EXACT INSTALL LOCATION SHALL BE FIELD DETERMINED.



DAMPER MONITORING SYSTEM
CHILDRENS HOSPITAL OF
ORANGE COUNTY - TOWER II
455 SOUTH MAIN STREET
ORANGE, CALIFORNIA 92868-3874

REVISIONS

ISSUED FOR PLANCHECK	03/08/11
DESIGN REVISION	07/18/11
DESIGN REVISION	11/22/11
DESIGN REVISION	11/06/12

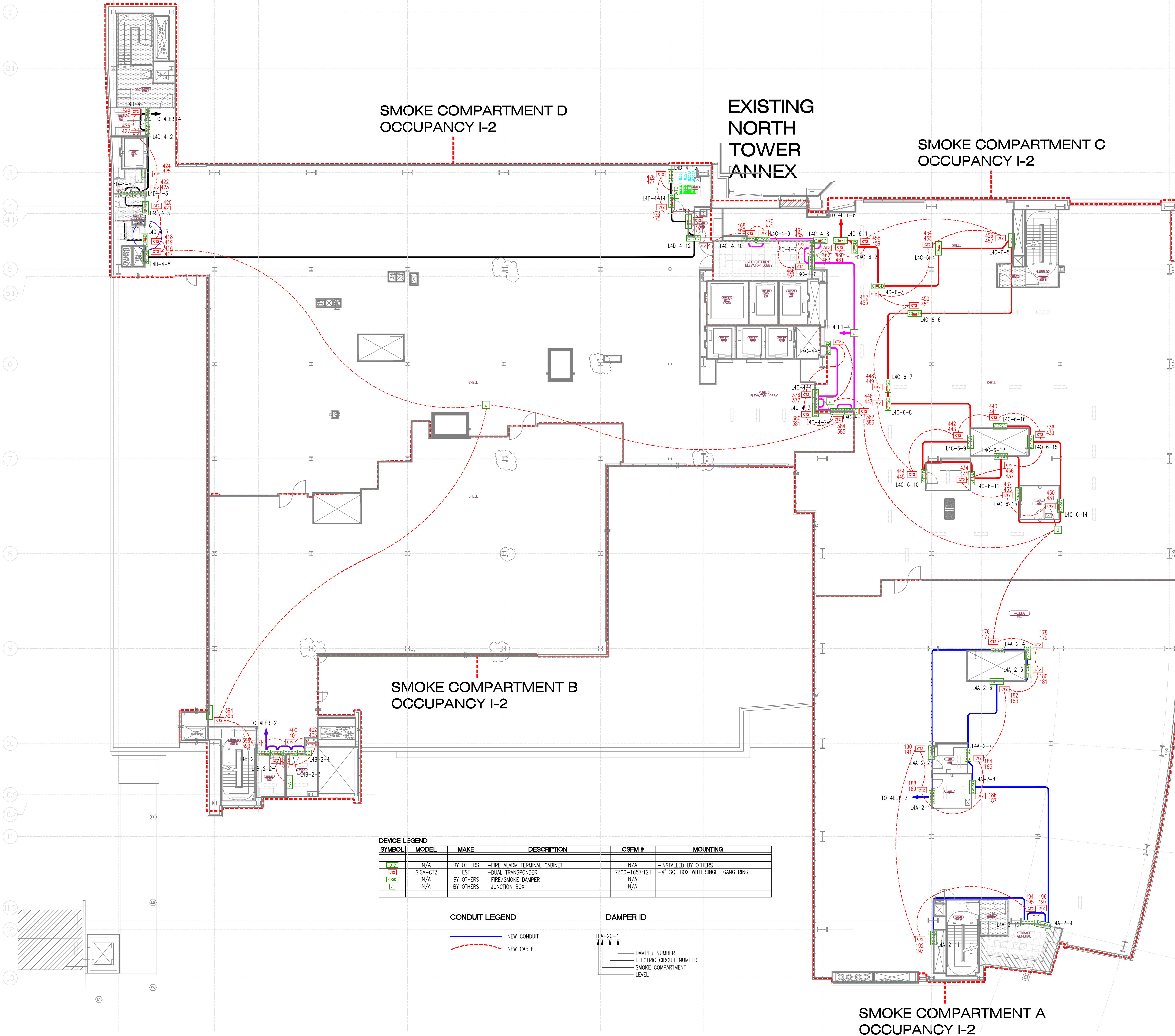
RECORD
DRAWINGS

THESE DRAWINGS HAVE BEEN PREPARED BY BEC EXCLUSIVELY FOR INSTALLATION BY BEC. BEC ACCEPTS NO LIABILITY FOR CLAIMS BY OTHERS IF BEC IS NOT THE INSTALLER. THESE DRAWINGS ARE INSTRUMENTS OF SERVICE AND ARE THE PROPERTY OF BEC. ALL DESIGNS AND OTHER INFORMATION CONTAINED ON THESE DRAWINGS ARE FOR USE ON THE SPECIFIED PROJECT, INSTALLED ONLY BY BEC, AND SHALL NOT BE REPRODUCED, ALTERED, USED TO OBTAIN PERMITS OR USED TO COMPLETE THIS PROJECT OR ANY OTHER PROJECT, BY OTHERS, WITHOUT FIRST OBTAINING THE EXPRESSED WRITTEN PERMISSION AND CONSENT OF BEC. THESE DRAWINGS SHALL NOT BE ASSIGNED TO A THIRD PARTY WITHOUT WRITTEN PERMISSION AND CONSENT FROM BEC. USE OF THESE DRAWINGS IN ANY SUCH MANNER WITHOUT BEC'S WRITTEN CONSENT SHALL CONSTITUTE TOTAL INDEMNIFICATION OF BEC LIABILITY.



DRAWING DATE:	03/08/11
SCALE:	1/16" = 1'-0"
FILE NAME:	FA000LDWG
DESIGNED BY:	C.S.
PROJECT MANAGER:	KYLE OBERMIRE
CONTACT NUMBER:	(909) 305-1800

SHEET TITLE
DAMPER MONITORING
SYSTEM
LEVEL 4
SHEET No.
FA-04.5



SIEMENS

CALIFORNIA STATE CONTRACTORS
LICENSE NO.: #758796 - B/ C10/ C16/ C20

Siemens Building Technologies, Inc.
FIS FIRE/LIFE SAFETY DIVISION
10775 Business Center Drive
Cypress, California 90630 USA
Phone: (714) 761-2200
Fax: (714) 220-4956

This drawing and the information and design application herein contained is the property of SIEMENS BUILDING TECHNOLOGIES, Inc. and is loaned upon the express condition that the same be returned to SIEMENS BUILDING TECHNOLOGIES, Inc. upon request; all information herein contained shall be treated as secret and confidential; no reproduction of this drawing or part thereof shall be made without the written consent of SIEMENS BUILDING TECHNOLOGIES, Incorporated.



BUILDING ELECTRONIC CONTROLS, INC.
2246 Lindsay Way
Glendora, CA 91740
PHONE: (909) 305-1600
FAX #: (909) 305-1604
LICENSE NO.: 729805
CLASSIFICATION: (S), C-7, C10
EXPIRATION DATE: 11/30/2012
RICHARD TAYLOR



- NOTES:
- ① INTERFACE TO PATIENT ROOM DOME LIGHT, DOME LIGHT & POWER SHALL BE FURNISHED AND INSTALLED BY OTHERS.
 - ② NOT USED
 - ③ INTERFACE TO VEN DOOR / ROLL-DOWN DOOR / SHUTTER FOR RELEASE. EQUIPMENT & POWER SHALL BE FURNISHED AND INSTALLED BY OTHERS.
 - ④ INTERFACE FOR MONITORING STATUS OF EQUIPMENT.
 - ⑤ SYNCHRONIZING CONFIGURATION OF ALL PAD PANELS.
 - ⑥ (RED) ACTIVATION & MONITORING / (GREEN) MONITORING FOR PAD PANELS.
 - ⑦ INTERFACE FOR RELEASE OF MAGNETIC DOOR HOLD OPEN DEVICES.
 - ⑧ INTERFACE FOR RELEASE OF COMBINATION SMOKE FIRE DAMPER CIRCUITS (EXCLUDING ISOLATION ROOMS).
 - ⑨ INTERFACE FOR ELEVATOR RECALL (PRIMARY)
 - ⑩ INTERFACE FOR ELEVATOR RECALL (ALT-RECALL)
 - ⑪ INTERFACE FOR ELEVATOR SHUNT TRIP
 - ⑫ INTERFACE FOR ELEVATOR SHUNT TRIP (BATTERY)
 - ⑬ INTERFACE FOR ELEVATOR CAB LIGHT (STEADY)
 - ⑭ INTERFACE FOR ELEVATOR CAB LIGHT (FLASHING)
 - ⑮ INTERFACE FOR RELEASE OF COMBINATION SMOKE FIRE DAMPER CIRCUITS FOR ISOLATION ROOMS ONLY.
 - ⑯ INTERFACE FOR HVAC SHUTDOWN
 - ⑰ INTERFACE FOR MONITORING OF DISCONNECT SWITCH
 - ⑱ MONITOR MODULE TO MONITOR ASPIRATING SMOKE DETECTION PANEL.
-FIRE 2
-TROUBLE
-FIRE 1
-TROUBLE
 - ⑲ CONTROL RELAY (HTRI-2) IS PROVIDED FOR ASPIRATING SMOKE DETECTION PANEL RESET
 - ⑳ MONITOR MODULES TO MONITOR PREACTION PANEL
-ALARM
-SUPERVISORY
-TROUBLE
 - ㉑ PROVIDE 120V AC, 200 AMP'S DEDICATED CIRCUIT FOR THE POWER SUPPLY
 - ㉒ CONTROL RELAY (HTRI-2) IS PROVIDED FOR DIMMER CONTROLS ACTIVATION

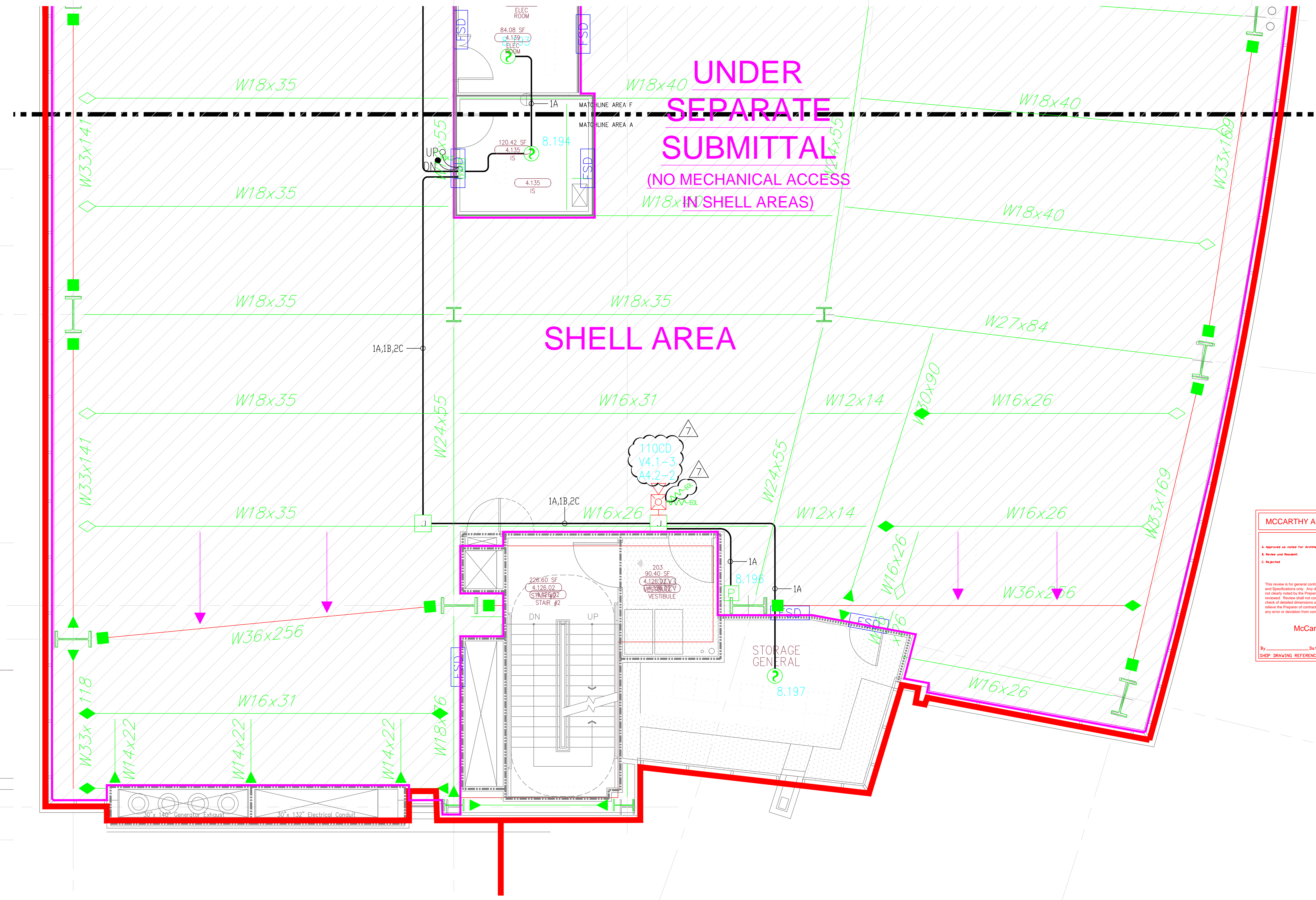
MCCARTHY APPROVAL

A. Approved as noted for architectural Review
B. Review and Rebuild
C. Rebuild

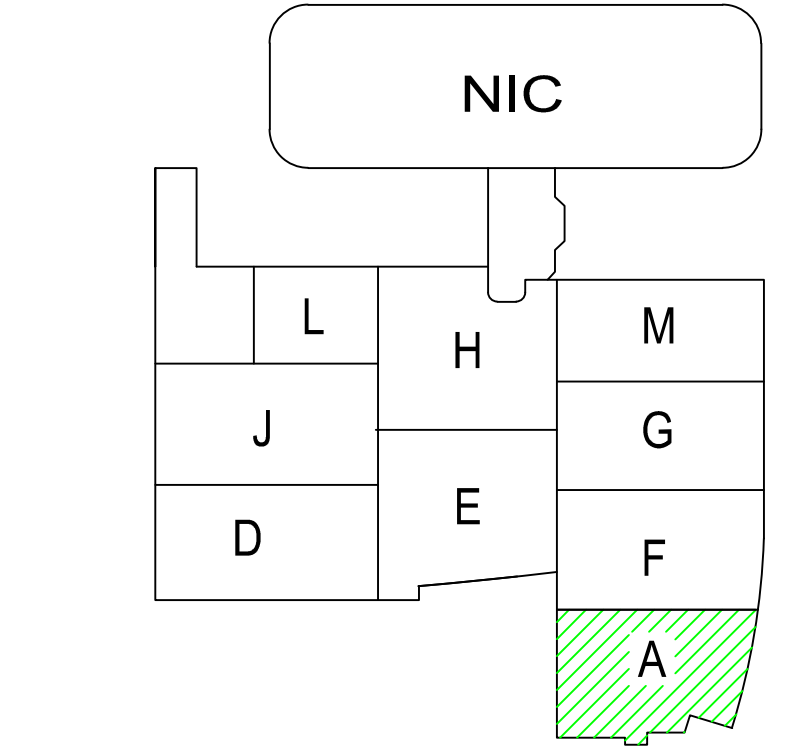
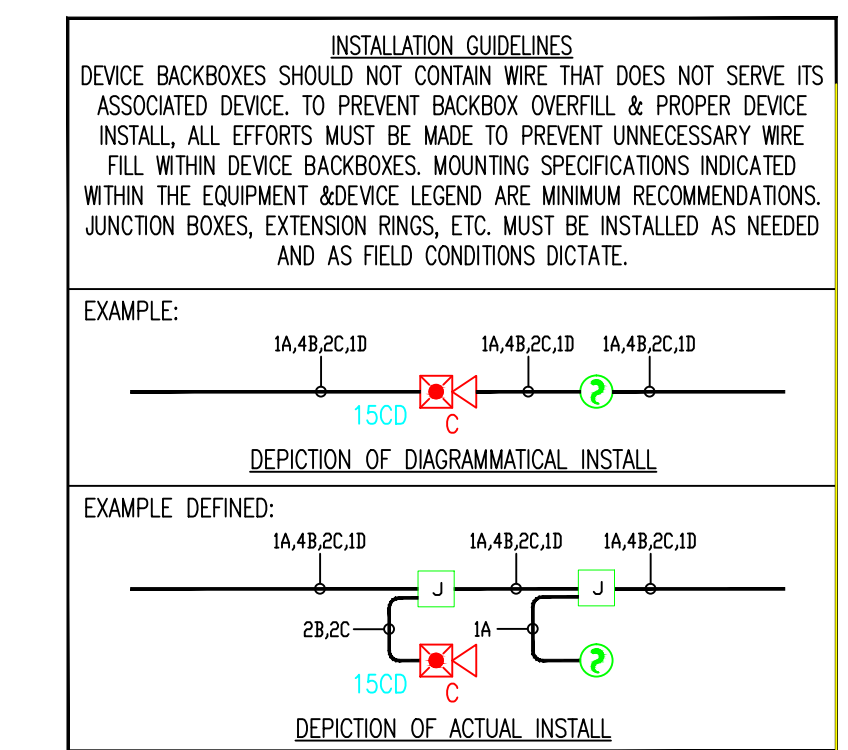
This review is for general conformance with Plans and Specifications only. Any deviations from same not clearly noted by the Engineer have not been reviewed. Reviewer shall not constitute a complete check of detailed dimensions or notes to verify to release the Engineer of contractual responsibility for any error or deviation from contract requirements.

McCarthy

By: _____ Date: _____
CHOP DRAWING REFERENCE NO. _____



SMOKE COMPARTMENT A



Key Plan
N.T.S.

NORTH

4) AS FIELD CONDITIONS DICTATE ACTUAL RACEWAY INSTALLATIONS, DEVICE BACK BOXES AND JUNCTION BOXES SHALL BE SIZED PER FIELD INSTALLING CONDITIONS. DEVICE BACK BOX SIZES INDICATED WITHIN THIS DRAWING PACKAGE ARE MINIMUM REQUIREMENTS ONLY. AN INCREASE IN BACK BOX DEPTH, ADDITION OF EXTENSION BOX/RING, ETC. MAY BE REQUIRED IN ORDER TO PROPERLY ACCOMMODATE FOR WIRE QUANTITIES INSTALLED WITHIN THE RACEWAY.

3) THE INSTALLATION OF DEVICE BACKBOXES & WIRE SHALL BE SIZED AND INSTALLED PER CEC. IN ADDITION DEVICE BOXES & WIRE SHALL BE INSTALLED IN A MANNER AS TO ALLOW FOR THE EASE OF DEVICE INSTALLATION. THE INSTALLATION OF DEVICES WHICH REQUIRE EXCESSIVE FORCE, THE PINCHING OF WIRES, RESULT IN GROUND FAULTS, ETC. IN ORDER TO PROPERLY SEAT THE DEVICE TO IT'S FINISHED SURFACE SHALL BE CONSIDERED UNACCEPTABLE AND A NON-SIEMENS INSTALLATION STANDARD.

2) ADDITIONAL JUNCTION BOXES NOT SHOWN WITHIN THESE PLANS MAY BE REQUIRED TO ACCOMMODATE PROPER RACEWAY INSTALLATIONS & SIZING. IT IS THE ELECTRICAL CONTRACTORS RESPONSIBILITY TO DETERMINE THE NECESSARY AMOUNT OF JUNCTION BOXES/EXTENSION RINGS REQUIRED.

1) ALL RACEWAY RUNS INDICATED WITHIN THIS DRAWING PACKAGE ARE SHOWN DIAGRAMMATICALLY AND ARE FOR CIRCUITING PURPOSES ONLY. ALL RUNS SHOWN SHOULD NOT SERVE IN ANY WAY AS AN ACTUAL ROUTING GUIDE FOR INSTALLATION OF RACEWAYS. EXACT INSTALL LOCATION SHALL BE FIELD DETERMINED.

- ☐ MXL ☐ VOICE ☐ XL3 ☐ SYSTEM3
☒ XLS ☐ FS-250 ☐ EST3 ☐ OTHER

OSHPD NO. #: IL-072072-30

Rev No.	Date	Remarks	Initial
1	07/20/12	DESIGN REVISION	
2	11/21/11	DESIGN REVISION	
3	07/21/11	DESIGN REVISION	
4	05/02/11	FULLERTON FIRE DEPARTMENT CORRECTIONS	
5	11/30/10	DISPATCH CENTER	LF
6	07/30/10	DISPATCH CENTER	LF
7	11/05/09	BACKGROUND REVISIONS	FM

Drawn: H. JEANG
Checked: -
Approved: -
Date: 07.30.09
Scale: 0'-1/4" = 1'-0"

FIRE ALARM FLOORPLAN
LEVEL 4 - AREA A

Job Number: 440P-056306

Project: CHILDRENS HOSPITAL OF
ORANGE COUNTY - TOWER II
455 SOUTH MAIN STREET
ORANGE, CALIFORNIA 92668-3874

Drawing Number: EF3.4A

SIEMENS

CALIFORNIA STATE CONTRACTORS
LICENSE NO.: #758796 - B/ C10/ C16/ C20

Siemens Building Technologies, Inc.
FIS FIRE/LIFE SAFETY DIVISION
10775 Business Center Drive
Cypress, California 90630 USA
Phone: (714) 761-2200
Fax: (714) 220-4958

This drawing and the information and design application herein contained is the property of SIEMENS BUILDING TECHNOLOGIES, Inc. and is loaned upon the express condition that the same be returned to SIEMENS BUILDING TECHNOLOGIES, Inc. upon request; all information herein contained shall be treated as secret and confidential; no reproduction of this drawing or part thereof shall be made without the written consent of SIEMENS BUILDING TECHNOLOGIES, Incorporated.



BUILDING ELECTRONIC CONTROLS, INC.
2246 Lindsay Way
Glendora, CA 91740
PHONE: (909) 305-1600
FAX #: (909) 305-1604
LICENSE NO.: 729805
CLASSIFICATION (S): C-7 C10
EXPIRATION DATE: 11/30/2012
RICHARD TAYLOR



- NOTES:
- ① INTERFACE TO PATIENT ROOM DOOR LIGHT, DOME LIGHT & POWER SHALL BE FURNISHED AND INSTALLED BY OTHERS.
 - ② NOT USED
 - ③ INTERFACE TO VEN DOOR / ROLL-DOWN DOOR / SHUTTER FOR RELEASE. EQUIPMENT & POWER SHALL BE FURNISHED AND INSTALLED BY OTHERS.
 - ④ INTERFACE FOR MONITORING STATUS OF EQUIPMENT.
 - ⑤ SYNCHRONIZING CONFIGURATION OF ALL PAD PANELS.
 - ⑥ KEY ACTIVATION & MONITORING / GFI-SS MONITORING FOR PAD PANELS.
 - ⑦ INTERFACE FOR RELEASE OF MAGNETIC DOOR HOLD OPEN DEVICES.
 - ⑧ INTERFACE FOR RELEASE OF COMBINATION SMOKE FIRE DAMPER CIRCUITS (EXCLUDING ISOLATION ROOMS).
 - ⑨ INTERFACE FOR ELEVATOR RECALL (PRIMARY)
 - ⑩ INTERFACE FOR ELEVATOR RECALL (ALT-RECALL)
 - ⑪ INTERFACE FOR ELEVATOR SHUNT TRIP
 - ⑫ INTERFACE FOR ELEVATOR SHUNT TRIP (BATTERY)
 - ⑬ INTERFACE FOR ELEVATOR CAB LIGHT (STEADY)
 - ⑭ INTERFACE FOR ELEVATOR CAB LIGHT (FLASHING)
 - ⑮ INTERFACE FOR RELEASE OF COMBINATION SMOKE FIRE DAMPER CIRCUITS FOR ISOLATION ROOMS ONLY.
 - ⑯ INTERFACE FOR HVAC SHUTDOWN
 - ⑰ INTERFACE FOR MONITORING OF DISCONNECT SWITCH
 - ⑱ MONITOR MODULE TO MONITOR ASPIRATING SMOKE DETECTION PANEL.
-PRE-ALARM
-FIRE 2
-TROUBLE
-FIRE 1
⑲ CONTROL RELAY (GFI-SS) IS PROVIDED FOR ASPIRATING SMOKE DETECTION PANEL RESET
 - ⑳ MONITOR MODULES TO MONITOR PREACTION PANEL.
-ALARM
-SUPERVISORY
-TROUBLE
 - ㉑ PROVIDE 120V AC, 200 AMP'S DEDICATED CIRCUIT FOR THE POWER SUPPLY
 - ㉒ CONTROL RELAY (GFI-SS) IS PROVIDED FOR DIMMER CONTROLS ACTIVATION

MCCARTHY APPROVAL

A. Approved as noted for architectural Review
B. Review and Rejected
C. Rejected

This review is for general conformance with Plans and Specifications only. Any deviation from same not clearly noted by the Engineer here not been reviewed. Reviewer shall not constitute a complete check of detailed drawings or plans to verify to reduce the Engineer of contractual responsibility for any error or deviation from contract requirements.

McCarthy

By: _____ In the presence of: _____
CHIEF DRAWING ENGINEER NO. _____

- MXL VOICE XL3 SYSTEMS
XLS FS-250 EST3 OTHER

OSHPD NO. #: IL-072072-30

Rev No.	Date	Remarks	Initial
1	07/20/12	DESIGN REVISION	
2	11/21/11	DESIGN REVISION	
3	07/21/11	DESIGN REVISION	
4	05/02/11	FULLERTON FIRE DEPARTMENT CORRECTIONS	
5	11/30/10	DISPATCH CENTER	LF
6	07/30/10	DISPATCH CENTER	LF
7	11/05/09	BACKGROUND REVISIONS	FM

Rev No. Date Remarks Initial

Drawn: H. JEANG

Checked: -

Approved: -

Date: 07.30.09

Scale: 0'-1/4" = 1'-0"

FIRE ALARM FLOORPLAN
LEVEL 4 - AREA D

Job Number: 440P-056306

Project: CHILDRENS HOSPITAL OF
ORANGE COUNTY - TOWER II
455 SOUTH MAIN STREET
ORANGE, CALIFORNIA 92668-3874

Drawing Number: EF3.4D

SMOKE COMPARTMENT OCCUPANCY I-2

MAY REQUIRE SECURE BUILD-OUT OR
SUPPORT FOR PROPER APPLIANCE/BACKBOX
& RACEWAY MOUNTING. F.B.O.

A4.3-3
(WP)

A4.3-2
(WP)

A4.3-1
(WP)

A4.3-4
(WP)

A4.3-5
(WP)

A4.3-6
(WP)

A4.3-7
(WP)

A4.3-8
(WP)

A4.3-9
(WP)

A4.3-10
(WP)

A4.3-11
(WP)

A4.3-12
(WP)

A4.3-13
(WP)

A4.3-14
(WP)

A4.3-15
(WP)

A4.3-16
(WP)

A4.3-17
(WP)

A4.3-18
(WP)

A4.3-19
(WP)

A4.3-20
(WP)

A4.3-21
(WP)

A4.3-22
(WP)

A4.3-23
(WP)

A4.3-24
(WP)

A4.3-25
(WP)

A4.3-26
(WP)

A4.3-27
(WP)

A4.3-28
(WP)

A4.3-29
(WP)

A4.3-30
(WP)

A4.3-31
(WP)

A4.3-32
(WP)

A4.3-33
(WP)

A4.3-34
(WP)

A4.3-35
(WP)

A4.3-36
(WP)

A4.3-37
(WP)

A4.3-38
(WP)

A4.3-39
(WP)

A4.3-40
(WP)

A4.3-41
(WP)

A4.3-42
(WP)

A4.3-43
(WP)

A4.3-44
(WP)

A4.3-45
(WP)

A4.3-46
(WP)

A4.3-47
(WP)

A4.3-48
(WP)

A4.3-49
(WP)

A4.3-50
(WP)

A4.3-51
(WP)

A4.3-52
(WP)

A4.3-53
(WP)

A4.3-54
(WP)

A4.3-55
(WP)

A4.3-56
(WP)

A4.3-57
(WP)

A4.3-58
(WP)

A4.3-59
(WP)

A4.3-60
(WP)

A4.3-61
(WP)

A4.3-62
(WP)

A4.3-63
(WP)

A4.3-64
(WP)

A4.3-65
(WP)

A4.3-66
(WP)

A4.3-67
(WP)

A4.3-68
(WP)

A4.3-69
(WP)

A4.3-70
(WP)

A4.3-71
(WP)

A4.3-72
(WP)

A4.3-73
(WP)

A4.3-74
(WP)

A4.3-75
(WP)

A4.3-76
(WP)

A4.3-77
(WP)

A4.3-78
(WP)

A4.3-79
(WP)

A4.3-80
(WP)

A4.3-81
(WP)

A4.3-82
(WP)

A4.3-83
(WP)

A4.3-84
(WP)

A4.3-85
(WP)

A4.3-86
(WP)

A4.3-87
(WP)

A4.3-88
(WP)

A4.3-89
(WP)

A4.3-90
(WP)

A4.3-91
(WP)

A4.3-92
(WP)

A4.3-93
(WP)

A4.3-94
(WP)

A4.3-95
(WP)

A4.3-96
(WP)

A4.3-97
(WP)

A4.3-98
(WP)

A4.3-99
(WP)

A4.3-100
(WP)

A4.3-101
(WP)

A4.3-102
(WP)

A4.3-103
(WP)

A4.3-104
(WP)

A4.3-105
(WP)

A4.3-106
(WP)

A4.3-107
(WP)

A4.3-108
(WP)

A4.3-109
(WP)

A4.3-110
(WP)

A4.3-111
(WP)

A4.3-112
(WP)

A4.3-113
(WP)

A4.3-114
(WP)

A4.3-115
(WP)

A4.3-116
(WP)

A4.3-117
(WP)

A4.3-118
(WP)

A4.3-119
(WP)

A4.3-120
(WP)

A4.3-121
(WP)

A4.3-122
(WP)

A4.3-123
(WP)

A4.3-124
(WP)

A4.3-125
(WP)

A4.3-126
(WP)

A4.3-127
(WP)

A4.3-128
(WP)

A4.3-129
(WP)

A4.3-130
(WP)

A4.3-131
(WP)

A4.3-132
(WP)

A4.3-133
(WP)

A4.3-134
(WP)

A4.3-135
(WP)

A4.3-136
(WP)

A4.3-137
(WP)

A4.3-138
(WP)

A4.3-139
(WP)

A4.3-140
(WP)

A4.3-141
(WP)

A4.3-142
(WP)

A4.3-143
(WP)

A4.3-144
(WP)

A4.3-145
(WP)

A4.3-146
(WP)

A4.3-147
(WP)

A4.3-148
(WP)

A4.3-149
(WP)

A4.3-150
(WP)

A4.3-151
(WP)

A4.3-152
(WP)

A4.3-153
(WP)

A4.3-154
(WP)

A4.3-155
(WP)

A4.3-156
(WP)

A4.3-157
(WP)

A4.3-158
(WP)

A4.3-159
(WP)

A4.3-160
(WP)

A4.3-161
(WP)

A4.3-162
(WP)

A4.3-163
(WP)

A4.3-164
(WP)

A4.3-165
(WP)

A4.3-166
(WP)

A4.3-167
(WP)

A4.3-168
(WP)

A4.3-169
(WP)

A4.3-170
(WP)

A4.3-171
(WP)

A4.3-172
(WP)

A4.3-173
(WP)

A4.3-174
(WP)

A4.3-175
(WP)

A4.3-176
(WP)

A4.3-177
(WP)

A4.3-178
(WP)

A4.3-179
(WP)

A4.3-180
(WP)

A4.3-181
(WP)

A4.3-182
(WP)

A4.3-183
(WP)

A4.3-184
(WP)

A4.3-185
(WP)

A4.3-186
(WP)

A4.3-187
(WP)

A4.3-188
(WP)

A4.3-189
(WP)

A4.3-190
(WP)

A4.3-191
(WP)

A4.3-192
(WP)

A4.3-193
(WP)

A4.3-194
(WP)

A4.3-195
(WP)

A4.3-196
(WP)

A4.3-197
(WP)

A4.3-198
(WP)

A4.3-199
(WP)

A4.3-200
(WP)

A4.3-201
(WP)

A4.3-202
(WP)

A4.3-203
(WP)

A4.3-204
(WP)

A4.3-205
(WP)

A4.3-206
(WP)

A4.3-207
(WP)

A4.3-208
(WP)

A4.3-209
(WP)

A4.3-210
(WP)

A4.3-211
(WP)

A4.3-212
(WP)

A4.3-213
(WP)

A4.3-214
(WP)

A4.3-215
(WP)

A4.3-216
(WP)

A4.3-217
(WP)

A4.3-218
(WP)

A4.3-219
(WP)

A4.3-220
(WP)

A4.3-221
(WP)

A4.3-222
(WP)

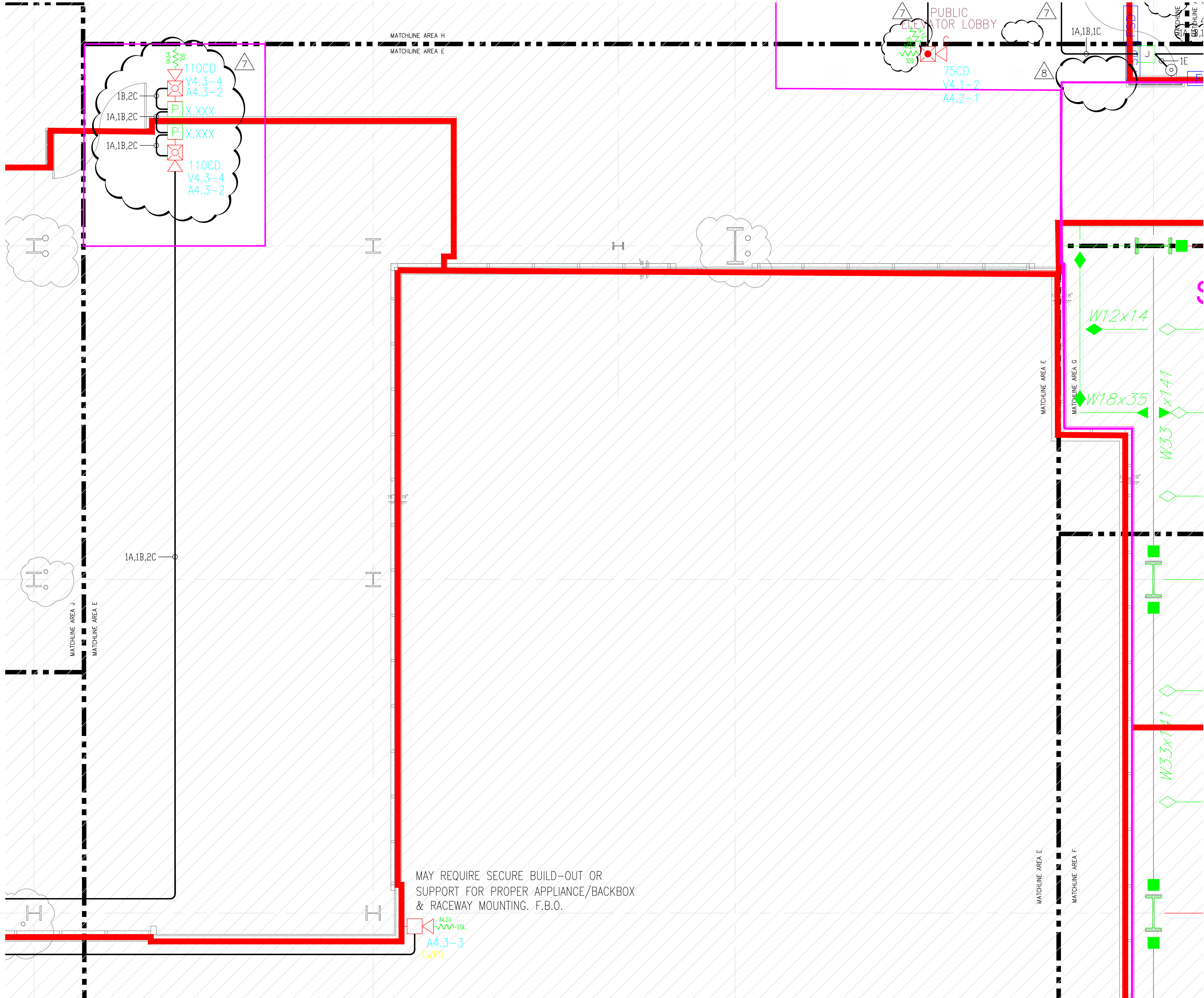
A4.3-223

1) ALL RACEWAY RUNS INDICATED WITHIN THIS DRAWING PACKAGE ARE SHOWN DIAGRAMMATICALLY AND ARE FOR CIRCUITING PURPOSES ONLY. ALL RUNS SHOWN SHOULD NOT SERVE IN ANY WAY AS AN ACTUAL ROUTING GUIDE FOR INSTALLATION OF RACEWAYS. EXACT INSTALL LOCATION SHALL BE FIELD DETERMINED.

2) ADDITIONAL JUNCTION BOXES NOT SHOWN WITHIN THESE PLANS MAY BE REQUIRED TO ACCOMMODATE PROPER RACEWAY INSTALLATIONS & SIZING. IT IS THE ELECTRICAL CONTRACTORS RESPONSIBILITY TO DETERMINE THE NECESSARY AMOUNT OF JUNCTION BOXES/EXTENSION RINGS REQUIRED. ALL INSTALLATION MATERIAL SUCH AS CONDUIT FITTING, BOXES, AND HANGERS, ETC. NOT SUPPLIED BY SIEMENS.

3) AS FIELD CONDITIONS DICTATE ACTUAL RACEWAY INSTALLATIONS, DEVICE BACK BOXES AND JUNCTION BOXES SHALL BE SIZED PER FIELD INSTALLING CONDITIONS. DEVICE BACK BOX SIZES INDICATED WITHIN THIS DRAWING PACKAGE ARE MINIMUM REQUIREMENTS ONLY. AN INCREASE IN BACK BOX DEPTH, ADDITION OF EXTENSION BOX/RING, ETC. MAY BE REQUIRED IN ORDER TO PROPERLY ACCOMMODATE FOR WIRE QUANTITIES INSTALLED WITHIN THE RACEWAY.

4) THE INSTALLATION OF DEVICE BACKBOXES & WIRE SHALL BE SIZED AND INSTALLED PER CEC. IN ADDITION SUCH BOXES & WIRE SHALL BE INSTALLED IN A MANNER AS TO ALLOW FOR THE EASE OF DEVICE INSTALLATION. THE INSTALLATION OF DEVICES WHICH REQUIRE EXCESSIVE FORCE, THE PINCHING OF WIRES, RESULT IN GROUND FAULTS, ETC. IN ORDER TO PROPERLY SEAT THE DEVICE TO IT'S FINISHED SURFACE SHALL BE CONSIDERED UNACCEPTABLE AND A NON-SIEMENS INSTALLATION STANDARD.



MAY REQUIRE SECURE BUILD-OUT OR SUPPORT FOR PROPER APPLIANCE/BACKBOX & RACEWAY MOUNTING. F.B.O.

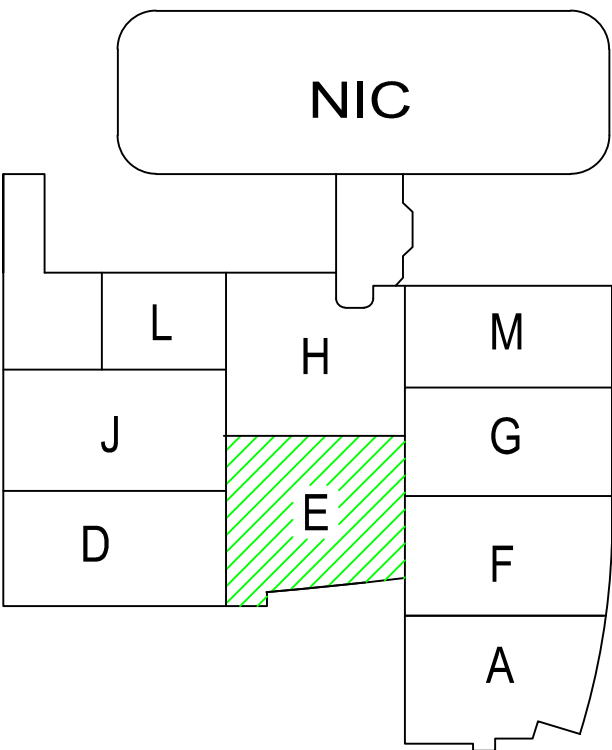
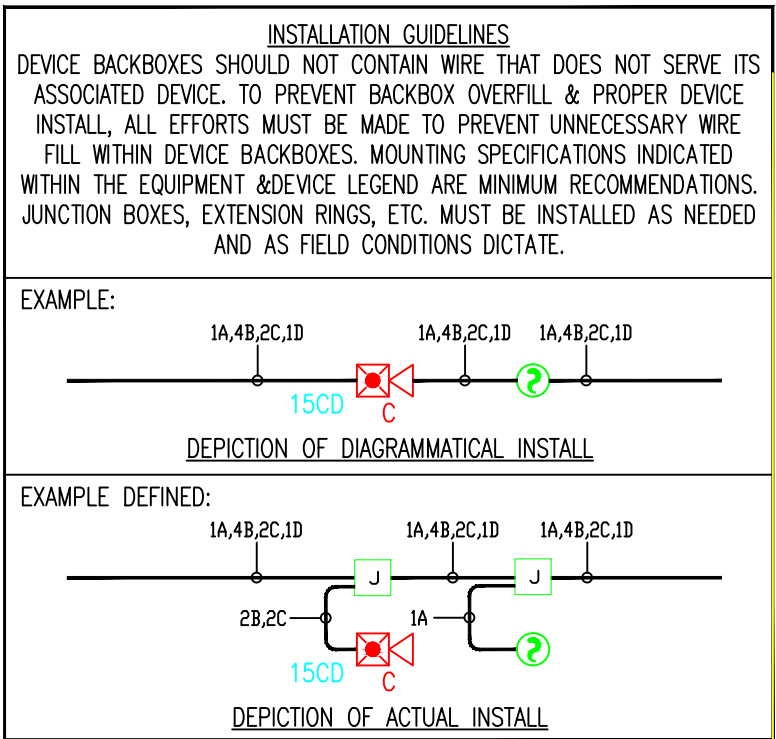
MCCARTHY APPROVAL

A. Approved as noted for architectural Review ☐
B. Review and Reinstall ☐
C. Reissue ☐

This review is for general conformance with Plans and Specifications only. Any deviations from same not clearly noted by the Engineer have not been reviewed. Reviewer shall not constitute a complete check of detailed dimensions or cover to verify to release the Engineer of contractual responsibility for any error or deviation from contract requirements.

McCarthy

By _____ Date _____
CHOP DRAWING REFERENCE NO. _____



SIEMENS

CALIFORNIA STATE CONTRACTORS
LICENSE NO.: #758796 - B/ C10/ C16/ C20

Siemens Building Technologies, Inc.
FIS FIRE/LIFE SAFETY DIVISION

10775 Business Center Drive
Cypress, California 90630 USA

Phone: (714) 761-2200
Fax: (714) 220-4958

This drawing and the information and design application herein contained is the property of SIEMENS BUILDING TECHNOLOGIES, Inc. and is loaned upon the express condition that the same be returned to SIEMENS BUILDING TECHNOLOGIES, Inc. upon request; all information herein contained shall be treated as secret and confidential; no reproduction of this drawing or part thereof shall be made without the written consent of SIEMENS BUILDING TECHNOLOGIES, Incorporated.



BUILDING ELECTRONIC CONTROLS, INC.
2246 Lindsay Way
Glendora, CA 91740
PHONE: (909) 305-1600
FAX #: (909) 305-1604

LICENSE NO.: 729805
CLASSIFICATION: C1-C7 C10
EXPIRATION DATE: 11/30/2012
RICHARD TAYLOR



- NOTES:**
- ① INTERFACE TO PATIENT ROOM DOME LIGHT. DOME LIGHT & POWER SHALL BE FURNISHED AND INSTALLED BY OTHERS.
 - ② NOT USED
 - ③ INTERFACE TO VEN DOOR / ROLL-DOWN DOOR / SHUTTER FOR RELEASE. EQUIPMENT & POWER SHALL BE FURNISHED AND INSTALLED BY OTHERS.
 - ④ INTERFACE FOR MONITORING STATUS OF EQUIPMENT.
 - ⑤ SYNCHRONIZING CONFIGURATION OF ALL PAD PANELS.
 - ⑥ (HPI) ACTIVATION & MONITORING / (HPI-S) MONITORING FOR PAD PANELS.
 - ⑦ INTERFACE FOR RELEASE OF MAGNETIC DOOR HOLD OPEN DEVICES.
 - ⑧ INTERFACE FOR RELEASE OF COMBINATION SMOKE FIRE DAMPER CIRCUITS (EXCLUDING ISOLATION ROOMS).
 - ⑨ INTERFACE FOR ELEVATOR RECALL (PRIMARY)
 - ⑩ INTERFACE FOR ELEVATOR RECALL (ALT-RECALL)
 - ⑪ INTERFACE FOR ELEVATOR SHUNT TRIP
 - ⑫ INTERFACE FOR ELEVATOR SHUNT TRIP (BATTERY)
 - ⑬ INTERFACE FOR ELEVATOR CAB LIGHT (STEADY)
 - ⑭ INTERFACE FOR ELEVATOR CAB LIGHT (FLASHING)
 - ⑮ INTERFACE FOR RELEASE OF COMBINATION SMOKE FIRE DAMPER CIRCUITS FOR ISOLATION ROOMS ONLY.
 - ⑯ INTERFACE FOR HVAC SHUTDOWN
 - ⑰ INTERFACE FOR MONITORING OF DISCONNECT SWITCH
 - ⑱ MONITOR MODULE TO MONITOR ASPIRATING SMOKE DETECTION PANEL.
-FIRE 2
-TROUBLE
-FIRE 1
 - ⑲ CONTROL RELAY (HTRI-R) IS PROVIDED FOR ASPIRATING SMOKE DETECTION PANEL RESET
 - ⑳ MONITOR MODULES TO MONITOR PREACTION PANEL
-ALARM
-SUPERVISORY
-TROUBLE
 - ㉑ PROVIDE 120V AC, 200 AMP'S DEDICATED CIRCUIT FOR THE POWER SUPPLY
 - ㉒ CONTROL RELAY (HTRI-R) IS PROVIDED FOR DIMMER CONTROLS ACTIVATION

- ☐ MXL ☐ VOICE ☐ XL3 ☐ SYSTEM3
☒ XLS ☐ FS-250 ☐ EST3 ☐ OTHER

OSHPD NO. #: IL-072072-30

Rev No.	Date	Remarks	Initial
1	07/20/12	DESIGN REVISION	-
2	11/21/11	DESIGN REVISION	-
3	07/21/11	DESIGN REVISION	-
4	05/02/11	FULLERTON FIRE DEPARTMENT CORRECTIONS	-
5	11/30/10	DISPATCH CENTER	LF
6	07/30/10	DISPATCH CENTER	LF
7	11/05/09	BACKGROUND REVISIONS	PM

Rev No. Date Remarks Initial

Drawn: H.JEANG

Checked: -

Approved: -

Date: 07.30.09

Scale: 0'-1/4" = 1'-0"

FIRE ALARM FLOORPLAN
LEVEL 4 - AREA E

Job Number: 440P-056306

Project: CHILDRENS HOSPITAL OF
ORANGE COUNTY - TOWER II
455 SOUTH MAIN STREET
ORANGE, CALIFORNIA 92868-3874

Drawing Number: EF3.4E

SIEMENS

CALIFORNIA STATE CONTRACTORS
LICENSE NO.: #758796 - B/ C10/ C16/ C20

Siemens Building Technologies, Inc.
FIS FIRE/LIFE SAFETY DIVISION

10775 Business Center Drive
Cypress, California 90630 USA
Phone: (714) 761-2200
Fax: (714) 220-4958

This drawing and the information and design application herein contained is the property of SIEMENS BUILDING TECHNOLOGIES, Inc. and is loaned upon the express condition that the same be returned to SIEMENS BUILDING TECHNOLOGIES, Inc. upon request; all information herein contained shall be treated as secret and confidential; no reproduction of this drawing or part thereof shall be made without the written consent of SIEMENS BUILDING TECHNOLOGIES, Incorporated.



BUILDING ELECTRONIC CONTROLS, INC.

2246 Lindsay Way
Glendora, CA 91740
PHONE: (909) 305-1600
FAX #: (909) 305-1604

LICENSE NO.: 728905
CLASSIFICATION: E-7 C10
EXPIRATION DATE: 11/30/2012
RICHARD TAYLOR



- NOTES:
- ① INTERFACE TO PATIENT ROOM DOME LIGHT, DOME LIGHT & POWER SHALL BE FURNISHED AND INSTALLED BY OTHERS.
 - ② NOT USED
 - ③ INTERFACE TO VEN DOOR / ROLL-DOWN DOOR / SHUTTER FOR RELEASE. EQUIPMENT & POWER SHALL BE FURNISHED AND INSTALLED BY OTHERS.
 - ④ INTERFACE FOR MONITORING STATUS OF EQUIPMENT.
 - ⑤ SYNCHRONIZING CONFIGURATION OF ALL PAD PANELS.
 - ⑥ (HPI) ACTIVATION & MONITORING / (HPI-S) MONITORING FOR PAD PANELS.
 - ⑦ INTERFACE FOR RELEASE OF MAGNETIC DOOR HOLD OPEN DEVICES.
 - ⑧ INTERFACE FOR RELEASE OF COMBINATION SMOKE FIRE DAMPER CIRCUITS (EXCLUDING ISOLATION ROOMS).
 - ⑨ INTERFACE FOR ELEVATOR RECALL (PRIMARY)
 - ⑩ INTERFACE FOR ELEVATOR RECALL (ALT-RECALL)
 - ⑪ INTERFACE FOR ELEVATOR SHUNT TRIP
 - ⑫ INTERFACE FOR ELEVATOR SHUNT TRIP (BATTERY)
 - ⑬ INTERFACE FOR ELEVATOR CAB LIGHT (STEADY)
 - ⑭ INTERFACE FOR ELEVATOR CAB LIGHT (FLASHING)
 - ⑮ INTERFACE FOR RELEASE OF COMBINATION SMOKE FIRE DAMPER CIRCUITS FOR ISOLATION ROOMS ONLY.
 - ⑯ INTERFACE FOR HVAC SHUTDOWN
 - ⑰ INTERFACE FOR MONITORING OF DISCONNECT SWITCH
 - ⑱ MONITOR MODULE TO MONITOR ASPIRATING SMOKE DETECTION PANEL.
-PRE-ALARM
-FIRE 2
-TROUBLE
-FIRE 1
 - ⑲ CONTROL RELAY (HTRI-R) IS PROVIDED FOR ASPIRATING SMOKE DETECTION PANEL RESET
 - ⑳ MONITOR MODULES TO MONITOR PREACTION PANEL
-ALARM
-SUPERVISORY
-TROUBLE
 - ㉑ PROVIDE 120V AC, 200 AMP'S DEDICATED CIRCUIT FOR THE POWER SUPPLY
 - ㉒ CONTROL RELAY (HTRI-R) IS PROVIDED FOR DIMMER CONTROLS ACTIVATION

MCCARTHY APPROVAL

Approved as noted for architectural Review
By: _____ Date: _____
Title: _____
Signature: _____

This review is for general conformance with these specifications only. Any deviation from same for design noted by the Engineer has not been reviewed. Review shall not constitute a complete check of detailed dimensions or cause to accept or release the Engineer of contractual responsibility for any error or deviation from contract requirements.

McCarthy

By: _____ Date: _____
Title: _____
Signature: _____

PROJECT DRAWING REFERENCE NO. _____

- ☐ MXL ☐ VOICE ☐ XL3 ☐ SYSTEM3
☒ XLS ☐ FS-250 ☐ EST3 ☐ OTHER

OSHPD NO. #: IL-072072-30

Rev No.	Date	Remarks	Initial
1	07/20/12	DESIGN REVISION	
2	11/27/11	DESIGN REVISION	
3	07/21/11	DESIGN REVISION	
4	05/02/11	FULLERTON FIRE DEPARTMENT CORRECTIONS	
5	11/30/10	DISPATCH CENTER	LF
6	07/30/10	DISPATCH CENTER	LF
7	11/05/09	BACKGROUND REVISIONS	FM

Rev No. Date Remarks Initial

Drawn: H.JEANG

Checked: -

Approved: -

Date: 07.30.09

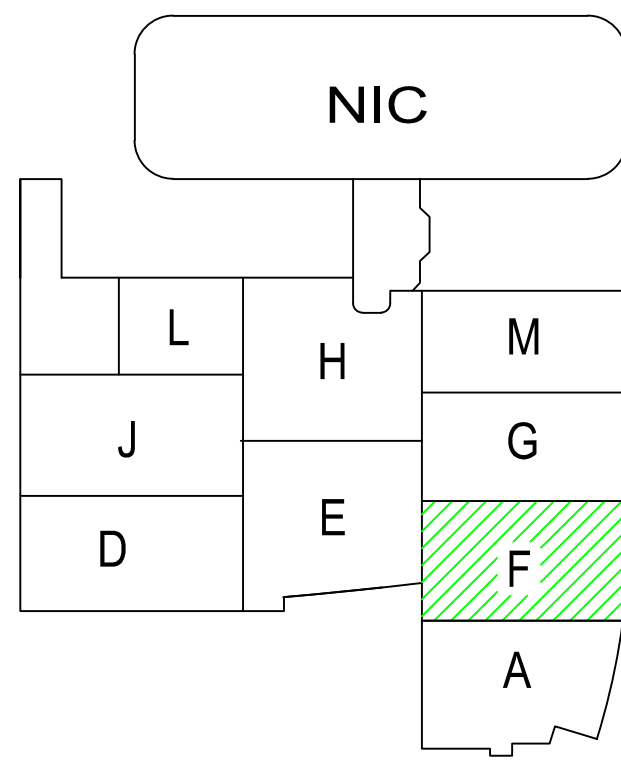
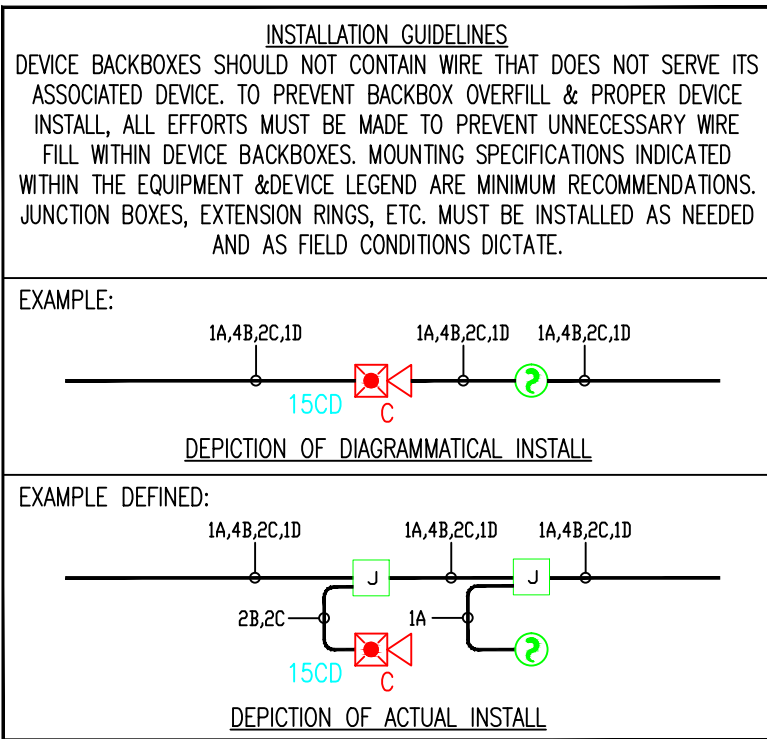
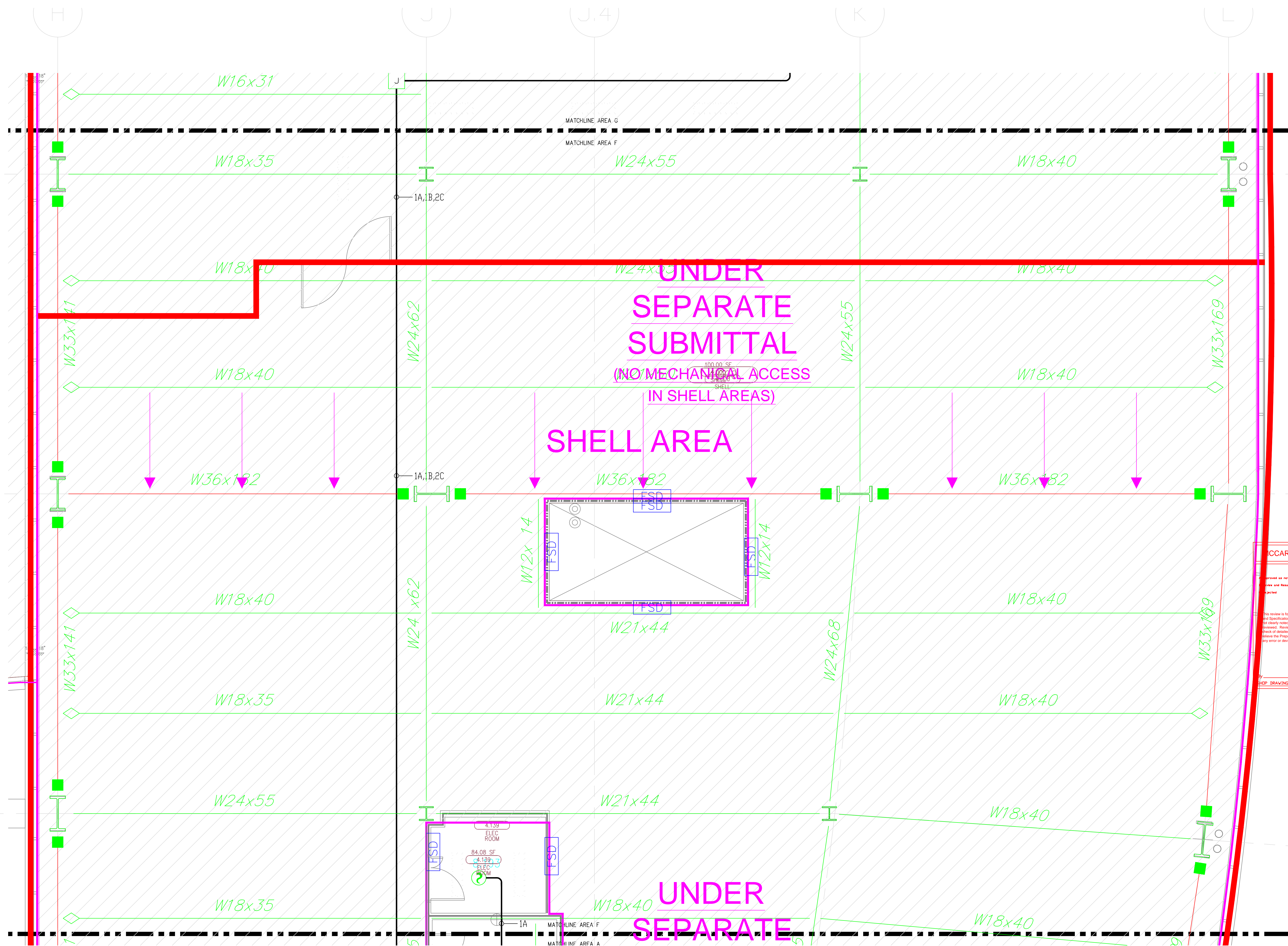
Scale: 0'-1/4" = 1'-0"

FIRE ALARM FLOORPLAN LEVEL 4 - AREA F

Job Number: 440P-056306

Project: CHILDRENS HOSPITAL OF
ORANGE COUNTY - TOWER II
455 SOUTH MAIN STREET
ORANGE, CALIFORNIA 92868-3874

Drawing Number: EF3.4F



4) AS FIELD CONDITIONS DICTATE ACTUAL RACEWAY INSTALLATIONS, DEVICE BACK BOXES AND JUNCTION BOXES SHALL BE SIZED PER FIELD INSTALLING CONDITIONS. DEVICE BACK BOX SIZES INDICATED WITHIN THIS DRAWING PACKAGE ARE MINIMUM REQUIREMENTS ONLY. AN INCREASE IN BACK BOX DEPTH, ADDITION OF EXTENSION BOX/RING, ETC. MAY BE REQUIRED IN ORDER TO PROPERLY ACCOMMODATE FOR WIRE QUANTITIES INSTALLED WITHIN THE RACEWAY.

3) THE INSTALLATION OF DEVICE BACKBOXES & WIRE SHALL BE SIZED AND INSTALLED PER CEC. IN ADDITION SUCH BOXES & WIRE SHALL BE INSTALLED IN A MANNER AS TO ALLOW FOR THE EASE OF DEVICE INSTALLATION. THE INSTALLATION OF DEVICES WHICH REQUIRE EXCESSIVE FORCE, THE PINCHING OF WIRES, RESULT IN GROUND FAULTS, ETC. IN ORDER TO PROPERLY SEAT THE DEVICE TO IT'S FINISHED SURFACE SHALL BE CONSIDERED UNACCEPTABLE AND A NON-SIEMENS INSTALLATION STANDARD.

2) ADDITIONAL JUNCTION BOXES NOT SHOWN WITHIN THESE PLANS MAY BE REQUIRED TO ACCOMMODATE PROPER RACEWAY INSTALLATIONS & SIZING. IT IS THE ELECTRICAL CONTRACTORS RESPONSIBILITY TO DETERMINE THE NECESSARY AMOUNT OF JUNCTION BOXES/EXTENSION RINGS REQUIRED.

1) ALL RACEWAY RUNS INDICATED WITHIN THIS DRAWING PACKAGE ARE SHOWN DIAGRAMMATICALLY AND ARE FOR CIRCUITING PURPOSES ONLY. ALL RUNS SHOWN SHOULD NOT SERVE IN ANY WAY AS AN ACTUAL ROUTING GUIDE FOR INSTALLATION OF RACEWAYS. EXACT INSTALL LOCATION SHALL BE FIELD DETERMINED.

1) ALL RACEWAY RUNS INDICATED WITHIN THIS DRAWING PACKAGE ARE SHOWN DIAGRAMMATICALLY AND ARE FOR CIRCUITING PURPOSES ONLY. ALL RUNS SHOWN SHOULD NOT SERVE IN ANY WAY AS AN ACTUAL ROUTING GUIDE FOR INSTALLATION OF RACEWAYS. EXACT INSTALL LOCATION SHALL BE FIELD DETERMINED.

2) ADDITIONAL JUNCTION BOXES NOT SHOWN WITHIN THESE PLANS MAY BE REQUIRED TO ACCOMMODATE PROPER RACEWAY INSTALLATIONS & SIZING. IT IS THE ELECTRICAL CONTRACTORS RESPONSIBILITY TO DETERMINE THE NECESSARY AMOUNT OF JUNCTION BOXES/EXTENSION RINGS REQUIRED. ALL INSTALLATION MATERIAL SUCH AS CONDUIT FITTING, BOXES, AND HANGERS, ETC. NOT SUPPLIED BY SIEMENS.

3) AS FIELD CONDITIONS DICTATE ACTUAL RACEWAY INSTALLATIONS, DEVICE BACK BOXES & JUNCTION BOXES SHALL BE SIZED PER FIELD INSTALLING CONDITIONS. DEVICE BACK BOX SIZES INDICATED WITHIN THIS DRAWING PACKAGE ARE MINIMUM REQUIREMENTS ONLY. AN INCREASE IN BACK BOX DEPTH, ADDITION OF EXTENSION BOX/RING, ETC. MAY BE REQUIRED IN ORDER TO PROPERLY ACCOMMODATE FOR WIRE QUANTITIES INSTALLED WITHIN THE RACEWAY.

4) THE INSTALLATION OF DEVICE BACKBOXES & WIRE SHALL BE SIZED AND INSTALLED PER NEC. IN ADDITION SUCH BOXES & WIRE SHALL BE INSTALLED IN A MANNER AS TO ALLOW FOR THE EASE OF DEVICE INSTALLATION. THE INSTALLATION OF DEVICES WHICH REQUIRE EXCESSIVE FORCE, THE PINCHING OF WIRES, RESULT IN GROUND FAULTS, ETC. IN ORDER TO PROPERLY SEAT THE DEVICE TO IT'S FINISHED SURFACE SHALL BE CONSIDERED UNACCEPTABLE AND A NON-SIEMENS INSTALLATION STANDARD.

