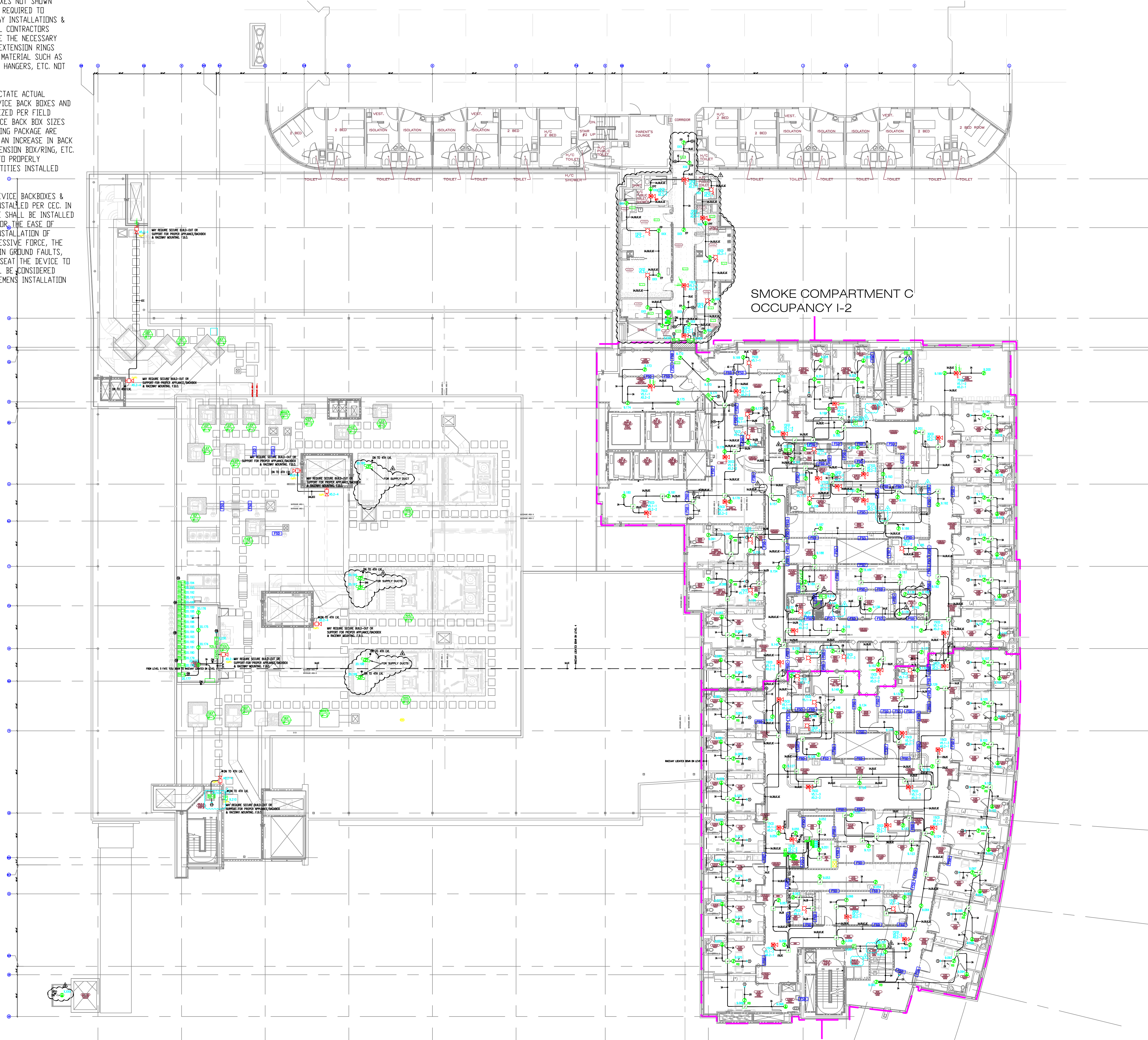


1) ALL RACEWAY RUNS INDICATED WITHIN THIS DRAWING PACKAGE ARE SHOWN DIAGRAMMATICALLY AND ARE FOR CIRCUITING PURPOSES ONLY. ALL RUNS SHOWN SHOULD NOT SERVE IN ANY WAY AS AN ACTUAL ROUTING GUIDE FOR INSTALLATION OF RACEWAYS. EXACT INSTALL LOCATION SHALL BE FIELD DETERMINED.

2) ADDITIONAL JUNCTION BOXES NOT SHOWN WITHIN THESE PLANS MAY BE REQUIRED TO ACCOMMODATE PROPER RACEWAY INSTALLATIONS & SIZING. IT IS THE ELECTRICAL CONTRACTORS RESPONSIBILITY TO DETERMINE THE NECESSARY AMOUNT OF JUNCTION BOXES/EXTENSION RINGS REQUIRED. ALL INSTALLATION MATERIAL SUCH AS CONDUIT FITTING, BOXES, AND HANGERS, ETC. NOT SUPPLIED BY SIEMENS.

3) AS FIELD CONDITIONS DICTATE ACTUAL RACEWAY INSTALLATIONS, DEVICE BACK BOXES AND JUNCTION BOXES SHALL BE SIZED PER FIELD INSTALLING CONDITIONS. DEVICE BACK BOX SIZES INDICATED WITHIN THIS DRAWING PACKAGE ARE MINIMUM REQUIREMENTS ONLY. AN INCREASE IN BACK BOX DEPTH, ADDITION OF EXTENSION BOX/RING, ETC. MAY BE REQUIRED IN ORDER TO PROPERLY ACCOMMODATE FOR WIRE QUANTITIES INSTALLED WITHIN THE RACEWAY.

4) THE INSTALLATION OF DEVICE BACKBOXES & WIRE SHALL BE SIZED AND INSTALLED PER CEC. IN ADDITION SUCH BOXES & WIRE SHALL BE INSTALLED IN A MANNER AS TO ALLOW FOR THE EASE OF DEVICE INSTALLATION. THE INSTALLATION OF DEVICES WHICH REQUIRE EXCESSIVE FORCE, THE PINCHING OF WIRES, RESULT IN GROUND FAULTS, ETC. IN ORDER TO PROPERLY SEAT THE DEVICE TO IT'S FINISHED SURFACE SHALL BE CONSIDERED UNACCEPTABLE AND A NON-SIEMENS INSTALLATION STANDARD.



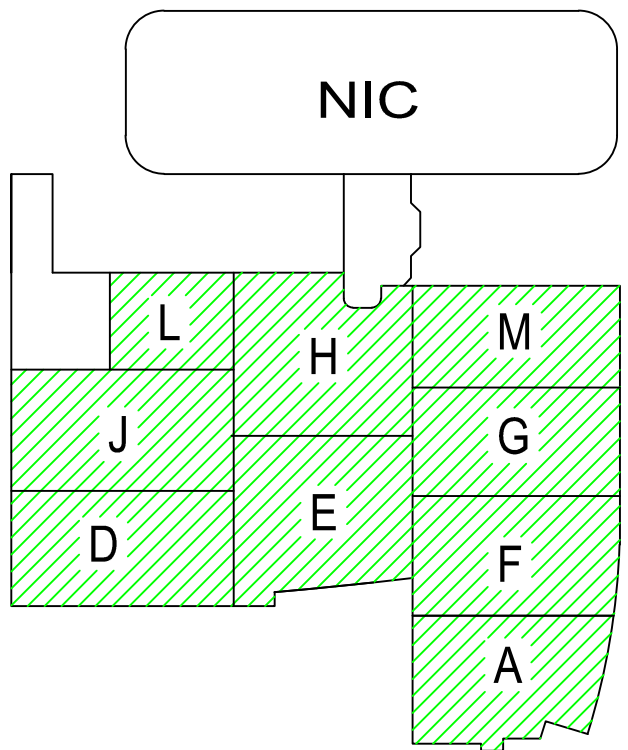
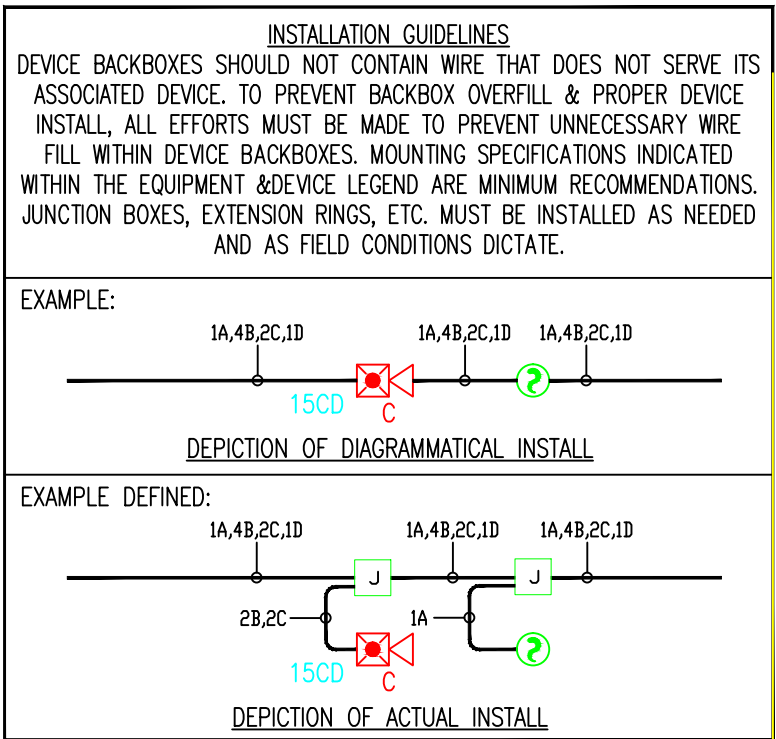
MCCARTHY APPROVAL

A. Approved as noted for architectural Review ☐
B. Review and Revisit ☐
C. Reissue ☐

This review is for general conformance with Plans and Specifications only. Any deviations from same not clearly noted by the Engineer have not been reviewed. Reviewer shall not constitute a complete check of detailed dimensions or construction, which shall be the responsibility of the Contractor. Reviewer shall not constitute a complete check of detailed dimensions or construction, which shall be the responsibility of the Contractor.

McCarthy

By _____ Date _____
SHOP DRAWING REFERENCE NO. _____



SIEMENS

CALIFORNIA STATE CONTRACTORS
LICENSE NO.: #758796 - B/ C10/ C16/ C20

Siemens Building Technologies, Inc.
FIS FIRE/LIFE SAFETY DIVISION

10775 Business Center Drive
Cypress, California 90630 USA

Phone: (714) 761-2200
Fax: (714) 220-4956

This drawing and the information and design application herein contained is the property of SIEMENS BUILDING TECHNOLOGIES, Inc. and is loaned upon the express condition that the same be returned to SIEMENS BUILDING TECHNOLOGIES, Inc. upon request; all information herein contained shall be treated as secret and confidential; no reproduction of this drawing or part thereof shall be made without the written consent of SIEMENS BUILDING TECHNOLOGIES, Incorporated.

BEC
Building Electronic Controls, Inc.

BUILDING ELECTRONIC CONTROLS, INC.
2246 Lindsay Way
Glendora, CA 91740
PHONE: (909) 305-1600
FAX #: (909) 305-1604

LICENSE NO.: 729805
CLASSIFICATION: C10, C16, C20
EXPIRATION DATE: 11/30/2012
RICHARD TAYLOR



- NOTES:**
- INTERFERENCE TO PATIENT ROOM BONE LIGHT, DOME LIGHT & POWER SHALL BE FURNISHED AND INSTALLED BY OTHERS.
 - NOT USED
 - INTERFERENCE TO VEN DOOR / ROLL-DOWN DOOR / SHUTTER FOR RELEASE EQUIPMENT & POWER SHALL BE FURNISHED AND INSTALLED BY OTHERS.
 - INTERFERENCE FOR MONITORING STATUS OF EQUIPMENT.
 - SYNCHRONIZING CONFIGURATION OF ALL PAD PANELS.
 - KEY ACTIVATION & MONITORING / GFI-PS MONITORING FOR PAD PANELS.
 - INTERFERENCE FOR RELEASE OF MAGNETIC DOOR HOLD OPEN DEVICES.
 - INTERFERENCE FOR RELEASE OF COMBINATION SMOKE FIRE DAMPER CIRCUITS (EXCLUDING ISOLATION ROOMS).
 - INTERFERENCE FOR ELEVATOR RECALL (PRIMARY)
 - INTERFERENCE FOR ELEVATOR RECALL (ALT-RECALL)
 - INTERFERENCE FOR ELEVATOR SHUNT TRIP
 - INTERFERENCE FOR ELEVATOR SHUNT TRIP (BATTERY)
 - INTERFERENCE FOR ELEVATOR CAB LIGHT (STEADY)
 - INTERFERENCE FOR ELEVATOR CAB LIGHT (FLASHING)
 - INTERFERENCE FOR RELEASE OF COMBINATION SMOKE FIRE DAMPER CIRCUITS FOR ISOLATION ROOMS ONLY.
 - INTERFERENCE FOR HVAC SHUTDOWN
 - INTERFERENCE FOR MONITORING OF DISCONNECT SWITCH
 - MONITOR MODULE TO MONITOR ASPIRATING SMOKE DETECTION PANEL.
-FIRE 2
-FIRE 1
-TROUBLE
 - CONTROL RELAY (GFI-PS) IS PROVIDED FOR ASPIRATING SMOKE DETECTION PANEL RESET
 - MONITOR MODULES TO MONITOR PREACTION PANEL
-ALARM
-TROUBLE
-SUPERVISORY
 - PROVIDE 120V AC, 20 AMP DEDICATED CIRCUIT FOR THE POWER SUPPLY
 - CONTROL RELAY (GFI-PS) IS PROVIDED FOR DIMMER CONTROLS ACTIVATION

- ☐ MXL ☐ VOICE ☐ XL3 ☐ SYSTEMS
☒ XLS ☐ FS-250 ☐ EST3 ☐ OTHER

OSHPD NO. #: IL-072072-30

Rev	No.	Date	Revision
1	07/20/12	07/20/12	DESIGN REVISION
2	11/21/11	11/21/11	DESIGN REVISION
3	07/21/11	07/21/11	DESIGN REVISION
4	05/02/11	05/02/11	FULLERTON FIRE DEPARTMENT CORRECTIONS
5	11/30/10	11/30/10	DESIGN REVISION
6	07/30/10	07/30/10	DESIGN REVISION
7	11/05/09	11/05/09	BACKGROUND REVISIONS

Rev No. Date Remarks Initial

Drawn: H.JEANG
Checked: -
Approved: -
Date: 07.30.09
Scale: 0'-1/16" = 1'-0"

FIRE ALARM FLOORPLAN
LEVEL 5 - COMPOSITE

Job Number: 440P-056306

Project: CHILDRENS HOSPITAL OF
ORANGE COUNTY - TOWER II
455 SOUTH MAIN STREET
ORANGE, CALIFORNIA 92668-3874

Drawing Number: EF1.50

- NOTES:
1. INTERFACE TO PATIENT ROOM BONE LIGHT, DOME LIGHT & POWER SHALL BE FURNISHED AND INSTALLED BY OTHERS.
 2. NOT USED
 3. INTERFACE TO VEN DOOR / ROLL-DOWN DOOR / SHUTTER FOR RELEASE EQUIPMENT & POWER SHALL BE FURNISHED AND INSTALLED BY OTHERS.
 4. INTERFACE FOR MONITORING STATUS OF EQUIPMENT.
 5. SYNCHRONIZING CONFIGURATION OF ALL PAD PANELS.
 6. GFI/ACTIVATION & MONITORING / GFI/RS MONITORING FOR PAD PANELS.
 7. INTERFACE FOR RELEASE OF MAGNETIC DOOR HOLD OPEN DEVICES.
 8. INTERFACE FOR RELEASE OF COMBINATION SMOKE FIRE DAMPER CIRCUITS (EXCLUDING ISOLATION ROOMS).
 9. INTERFACE FOR ELEVATOR RECALL (PRIMARY).
 10. INTERFACE FOR ELEVATOR RECALL (ALT-RECALL).
 11. INTERFACE FOR ELEVATOR SHUNT TRIP.
 12. INTERFACE FOR ELEVATOR SHUNT TRIP (BATTERY).
 13. INTERFACE FOR ELEVATOR CAB LIGHT (STEADY).
 14. INTERFACE FOR ELEVATOR CAB LIGHT (FLASHING).
 15. INTERFACE FOR RELEASE OF COMBINATION SMOKE FIRE DAMPER CIRCUITS FOR ISOLATION ROOMS ONLY.
 16. INTERFACE FOR HVAC SHUTDOWN.
 17. INTERFACE FOR MONITORING OF DISCONNECT SWITCH.
 18. MONITOR MODULE TO MONITOR ASPIRATING SMOKE DETECTION PANEL.
-FIRE 2
-FIRE 1
-TROUBLE
 19. CONTROL RELAY (GTRI-R) IS PROVIDED FOR ASPIRATING SMOKE DETECTION PANEL RESET.
 20. MONITOR MODULES TO MONITOR PREACTION PANEL.
-ALARM
-SUPERVISORY
-TROUBLE
 21. PROVIDE 120V AC, 20 AMP DEDICATED CIRCUIT FOR THE POWER SUPPLY.
 22. CONTROL RELAY (GTRI-R) IS PROVIDED FOR DIMMER CONTROLS ACTIVATION.

MCCARTHY APPROVAL

A. Approved as noted for Architectural Review
B. Review and Revisit
C. Reissue

This review is for general conformance with Plans and Specifications only. Any deviations from same not clearly noted by the Engineer hereon are not intended. Reviewer shall not constitute a complete check of detailed drawings or plans to verify the absence of errors or omissions or to verify the absence of errors or omissions or to verify the absence of errors or omissions.

McCarthy

By: _____ Date: _____
CHOP DRAWING REFERENCE NO. _____

☐ MXL ☐ VOICE ☐ XL3 ☐ SYSTEM3
☒ XLS ☐ FS-250 ☐ EST3 ☐ OTHER

OSHPD NO. #: IL-072072-30

Rev No.	Date	Remarks	Initial
1	07/20/12	DESIGN-REVISION	
2	11/21/11	DESIGN-REVISION	
3	07/21/11	DESIGN-REVISION	
4	05/02/11	FULLERTON FIRE DEPARTMENT CORRECTIONS	
5	11/30/10	DISPATCH AREA	LF
6	07/30/10	DISPATCH AREA	LF
7	11/05/09	BACKGROUND-REVISIONS	FM

Rev No. Date Remarks Initial

Drawn: H.JEANG

Checked: -

Approved: -

Date: 07.30.09

Scale: 0'-1/4" = 1'-0"

FIRE ALARM FLOORPLAN
LEVEL 5 - AREA A

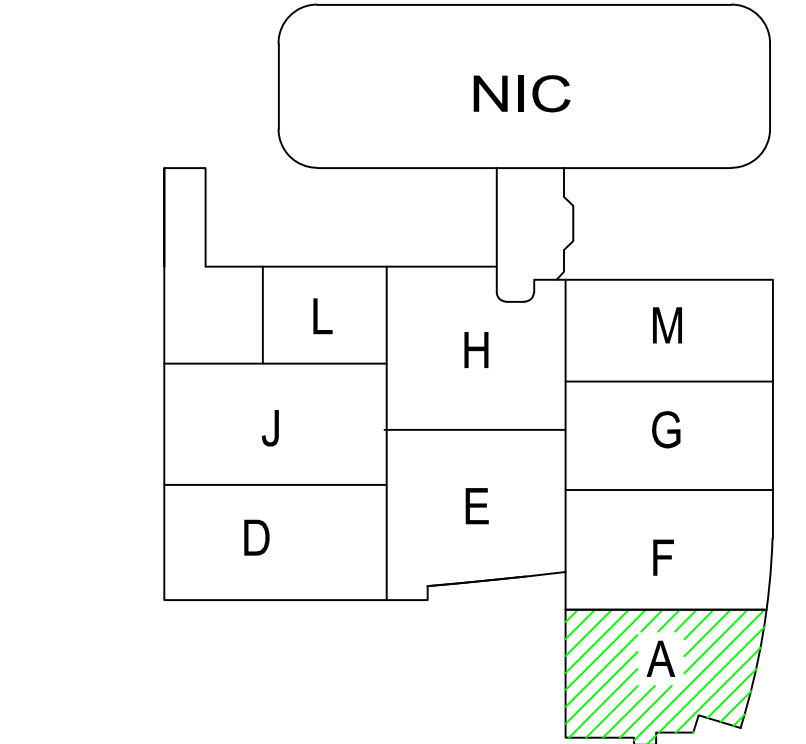
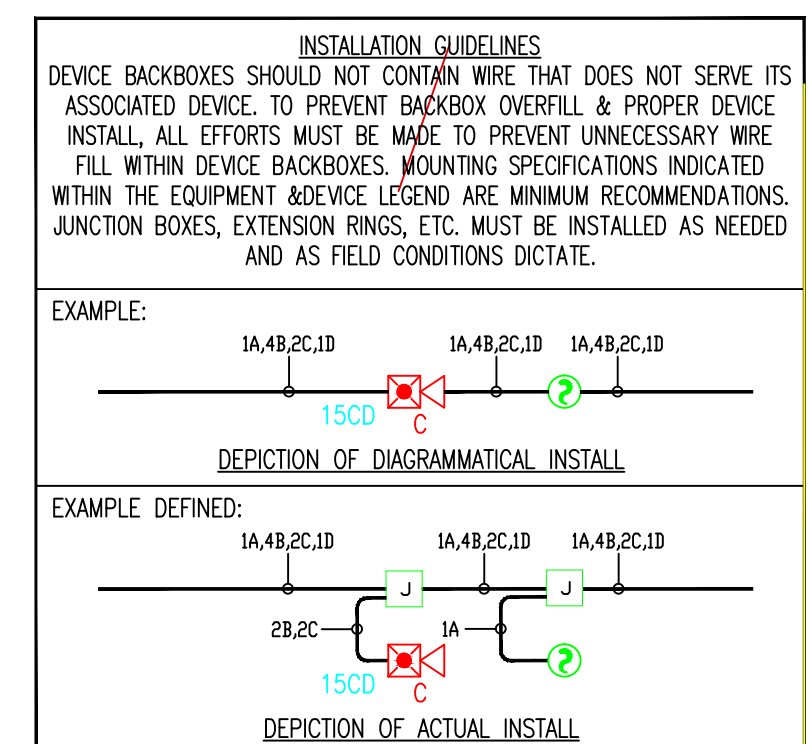
Job Number: 440P-056306

Project: CHILDRENS HOSPITAL OF
ORANGE COUNTY - TOWER II
455 SOUTH MAIN STREET
ORANGE, CALIFORNIA 92668-3874

Drawing Number: EF3.5A



SMOKE COMPARTMENT A OCCUPANCY I-2



4.) AS FIELD CONDITIONS DICTATE ACTUAL RACEWAY INSTALLATIONS, DEVICE BACK BOXES AND JUNCTION BOXES SHALL BE SIZED PER FIELD INSTALLING CONDITIONS. DEVICE BACK BOX SIZES INDICATED WITHIN THIS DRAWING PACKAGE ARE MINIMUM REQUIREMENTS ONLY. AN INCREASE IN BACK BOX DEPTH, ADDITION OF EXTENSION BOX/RING, ETC. MAY BE REQUIRED IN ORDER TO PROPERLY ACCOMMODATE FOR WIRE QUANTITIES INSTALLED WITHIN THE RACEWAY.

3.) THE INSTALLATION OF DEVICE BACKBOXES & WIRE SHALL BE SIZED AND INSTALLED PER CEC. IN ADDITION SUCH BOXES & WIRE SHALL BE INSTALLED IN A MANNER AS TO ALLOW FOR THE EASE OF DEVICE INSTALLATION. THE INSTALLATION OF DEVICES WHICH REQUIRE EXCESSIVE FORCE, THE PINCHING OF WIRES, RESULT IN GROUND FAULTS, ETC. IN ORDER TO PROPERLY SEAT THE DEVICE TO IT'S FINISHED SURFACE SHALL BE CONSIDERED UNACCEPTABLE AND A NON-SIEMENS INSTALLATION STANDARD.

2.) ADDITIONAL JUNCTION BOXES NOT SHOWN WITHIN THESE PLANS MAY BE REQUIRED TO ACCOMMODATE PROPER RACEWAY INSTALLATIONS & SIZING. IT IS THE ELECTRICAL CONTRACTORS RESPONSIBILITY TO DETERMINE THE NECESSARY AMOUNT OF JUNCTION BOXES/EXTENSION RINGS REQUIRED.

1.) ALL RACEWAY RUNS INDICATED WITHIN THIS DRAWING PACKAGE ARE SHOWN DIAGRAMMATICALLY AND ARE FOR CIRCUITING PURPOSES ONLY. ALL RUNS SHOWN SHOULD NOT SERVE IN ANY WAY AS AN ACTUAL ROUTING GUIDE FOR INSTALLATION OF RACEWAYS. EXACT INSTALL LOCATION SHALL BE FIELD DETERMINED.

SIEMENS

CALIFORNIA STATE CONTRACTORS
LICENSE NO.: #758796 - B/ C10/ C16/ C20

Siemens Building Technologies, Inc.
FIS FIRE/LIFE SAFETY DIVISION

10775 Business Center Drive
Cypress, California 90630 USA
Phone: (714) 761-2200
Fax: (714) 220-4958

This drawing and the information and design application herein contained is the property of SIEMENS BUILDING TECHNOLOGIES, Inc. and is loaned upon the express condition that the same be returned to SIEMENS BUILDING TECHNOLOGIES, Inc. upon request; all information herein contained shall be treated as secret and confidential; no reproduction of this drawing or part thereof shall be made without the written consent of SIEMENS BUILDING TECHNOLOGIES, Incorporated.



BUILDING ELECTRONIC CONTROLS, INC.
2248 Lindsay Way
Glendora, CA 91740
PHONE: (909) 305-1600
FAX #: (909) 305-1604
LICENSE NO.: 729805
CLASSIFICATION (S): C-7 C10
EXPIRATION DATE: 11/30/2012
RICHARD TAYLOR



- NOTES:
- ① INTERFACE TO PATIENT ROOM BONE LIGHT, BONE LIGHT & POWER SHALL BE FURNISHED AND INSTALLED BY OTHERS.
 - ② NOT USED
 - ③ INTERFACE TO VEN DOOR / ROLL-DOWN DOOR / SHUTTER FOR RELEASE EQUIPMENT & POWER SHALL BE FURNISHED AND INSTALLED BY OTHERS.
 - ④ INTERFACE FOR MONITORING STATUS OF EQUIPMENT.
 - ⑤ SYNCHRONIZING CONFIGURATION OF ALL PAD PANELS.
 - ⑥ GEPY ACTIVATION & MONITORING / GTRI-SD MONITORING FOR PAD PANELS.
 - ⑦ INTERFACE FOR RELEASE OF MAGNETIC DOOR HOLD OPEN DEVICES.
 - ⑧ INTERFACE FOR RELEASE OF COMBINATION SMOKE FIRE DAMPER CIRCUITS (EXCLUDING ISOLATION ROOMS).
 - ⑨ INTERFACE FOR ELEVATOR RECALL (PRIMARY)
 - ⑩ INTERFACE FOR ELEVATOR RECALL (ALT-RECALL)
 - ⑪ INTERFACE FOR ELEVATOR SHUNT TRIP
 - ⑫ INTERFACE FOR ELEVATOR SHUNT TRIP (BATTERY)
 - ⑬ INTERFACE FOR ELEVATOR CAB LIGHT (STEADY)
 - ⑭ INTERFACE FOR ELEVATOR CAB LIGHT (FLASHING)
 - ⑮ INTERFACE FOR RELEASE OF COMBINATION SMOKE FIRE DAMPER CIRCUITS FOR ISOLATION ROOMS ONLY.
 - ⑯ INTERFACE FOR HVAC SHUTDOWN
 - ⑰ INTERFACE FOR MONITORING OF DISCONNECT SWITCH
 - ⑱ MONITOR MODULE TO MONITOR ASPIRATING SMOKE DETECTION PANEL.
-FIRE 2
-FIRE 2
-TROUBLE
 - ⑲ CONTROL RELAY (GTRI-SD) IS PROVIDED FOR ASPIRATING SMOKE DETECTION PANEL RESET
 - ⑳ MONITOR MODULES TO MONITOR PREACTION PANEL
-ALARM
-SUPERVISORY
-TROUBLE
 - ㉑ PROVIDE 120V AC, 200 AMP'S DEDICATED CIRCUIT FOR THE POWER SUPPLY
 - ㉒ CONTROL RELAY (GTRI-SD) IS PROVIDED FOR DIMMER CONTROLS ACTIVATION

MCCARTHY APPROVAL

A. Approved as noted for Architectural Review ☐
B. Review and Revisit ☐
C. Reissue ☐

This review is for general conformance with Plans and Specifications only. Any deviations from same not clearly noted by the Engineer have not been reviewed. Reviewer shall not constitute a complete check of detailed dimensions or notes to verify to release the Engineer of contractual responsibility for any error or deviation from contract requirements.

McCarthy

By: _____ Date: _____
CHOP DRAWING REFERENCE NO. _____

- ☐ MXL ☐ VOICE ☐ XL3 ☐ SYSTEM3
☒ XLS ☐ FS-250 ☐ EST3 ☐ OTHER

OSHPD NO. #: IL-072072-30

Rev No.	Date	Remarks	Initial
07/20/12	DESIGN REVISION		
11/21/11	DESIGN REVISION		
07/21/11	DESIGN REVISION		
05/02/11	FULLERTON FIRE DEPARTMENT CORRECTIONS		
11/30/10	DISPATCH CENTER		
07/30/10	DISPATCH CENTER		
11/05/09	BACKGROUND REVISIONS		

Rev No. Date Remarks Initial

Drawn: H.JEANG

Checked: -

Approved: -

Date: 07.30.09

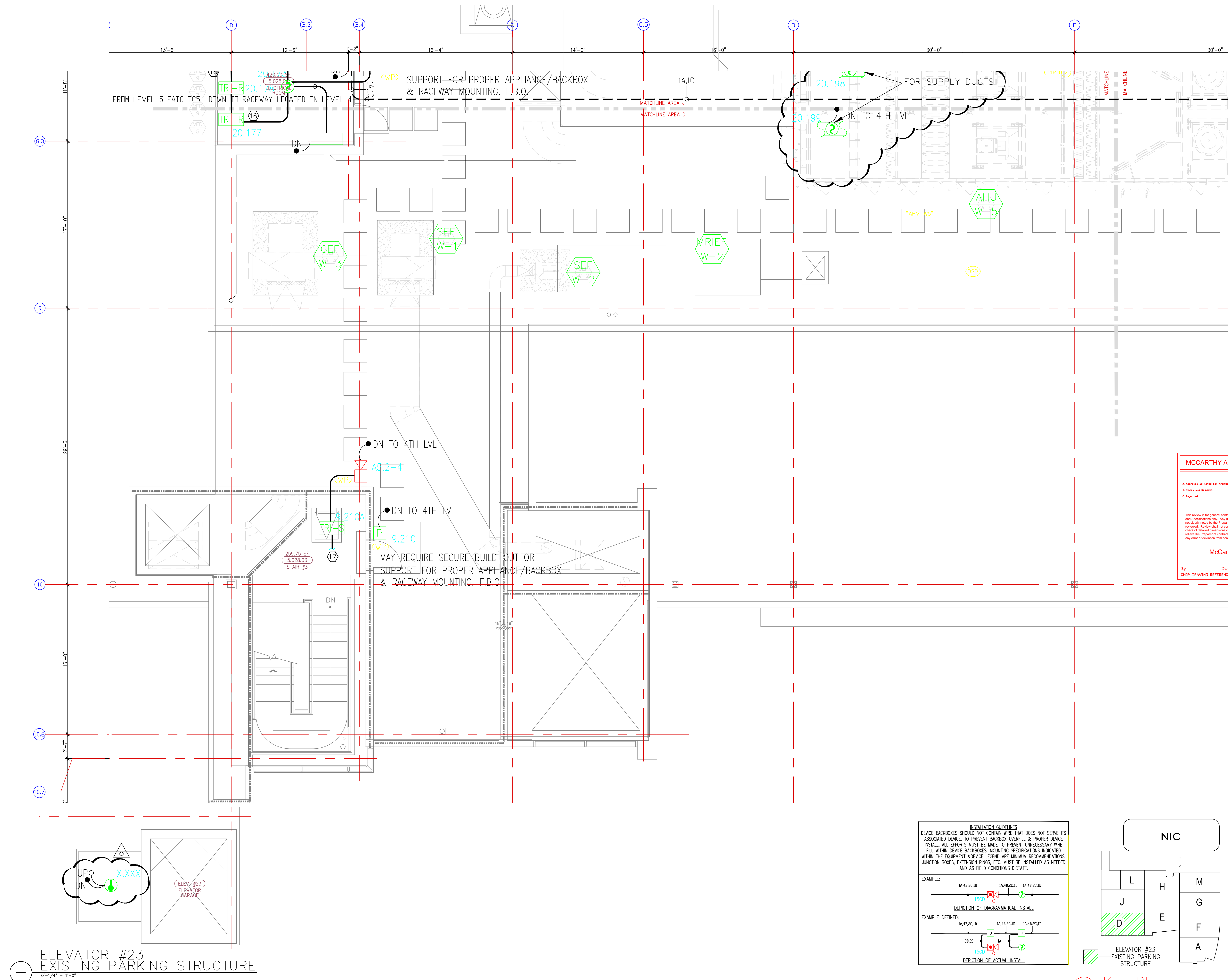
Scale: 0'-1/4" = 1'-0"

FIRE ALARM FLOORPLAN
LEVEL 5 - AREA D

Job Number: 440P-056306

Project: CHILDRENS HOSPITAL OF
ORANGE COUNTY - TOWER II
455 SOUTH MAIN STREET
ORANGE, CALIFORNIA 92668-3874

Drawing Number: EF3.5D



4) AS FIELD CONDITIONS DICTATE ACTUAL RACEWAY INSTALLATIONS, DEVICE BACK BOXES AND JUNCTION BOXES SHALL BE SIZED PER FIELD INSTALLING CONDITIONS. DEVICE BACK BOX SIZES INDICATED WITHIN THIS DRAWING PACKAGE ARE MINIMUM REQUIREMENTS ONLY. AN INCREASE IN BACK BOX DEPTH, ADDITION OF EXTENSION BOX/RING, ETC. MAY BE REQUIRED IN ORDER TO PROPERLY ACCOMMODATE FOR WIRE QUANTITIES INSTALLED WITHIN THE RACEWAY.

3) THE INSTALLATION OF DEVICE BACKBOXES & WIRE SHALL BE SIZED AND INSTALLED PER CEC. IN ADDITION SUCH BOXES & WIRE SHALL BE INSTALLED IN A MANNER AS TO ALLOW FOR THE EASE OF DEVICE INSTALLATION. THE INSTALLATION OF DEVICES WHICH REQUIRE EXCESSIVE FORCE, THE PINCHING OF WIRES, RESULT IN GROUND FAULTS, ETC. IN ORDER TO PROPERLY SEAT THE DEVICE TO IT'S FINISHED SURFACE SHALL BE CONSIDERED UNACCEPTABLE AND A NON-SIEMENS INSTALLATION STANDARD.

2) ADDITIONAL JUNCTION BOXES NOT SHOWN WITHIN THESE PLANS MAY BE REQUIRED TO ACCOMMODATE PROPER RACEWAY INSTALLATIONS & SIZING. IT IS THE ELECTRICAL CONTRACTORS RESPONSIBILITY TO DETERMINE THE NECESSARY AMOUNT OF JUNCTION BOXES/EXTENSION RINGS REQUIRED.

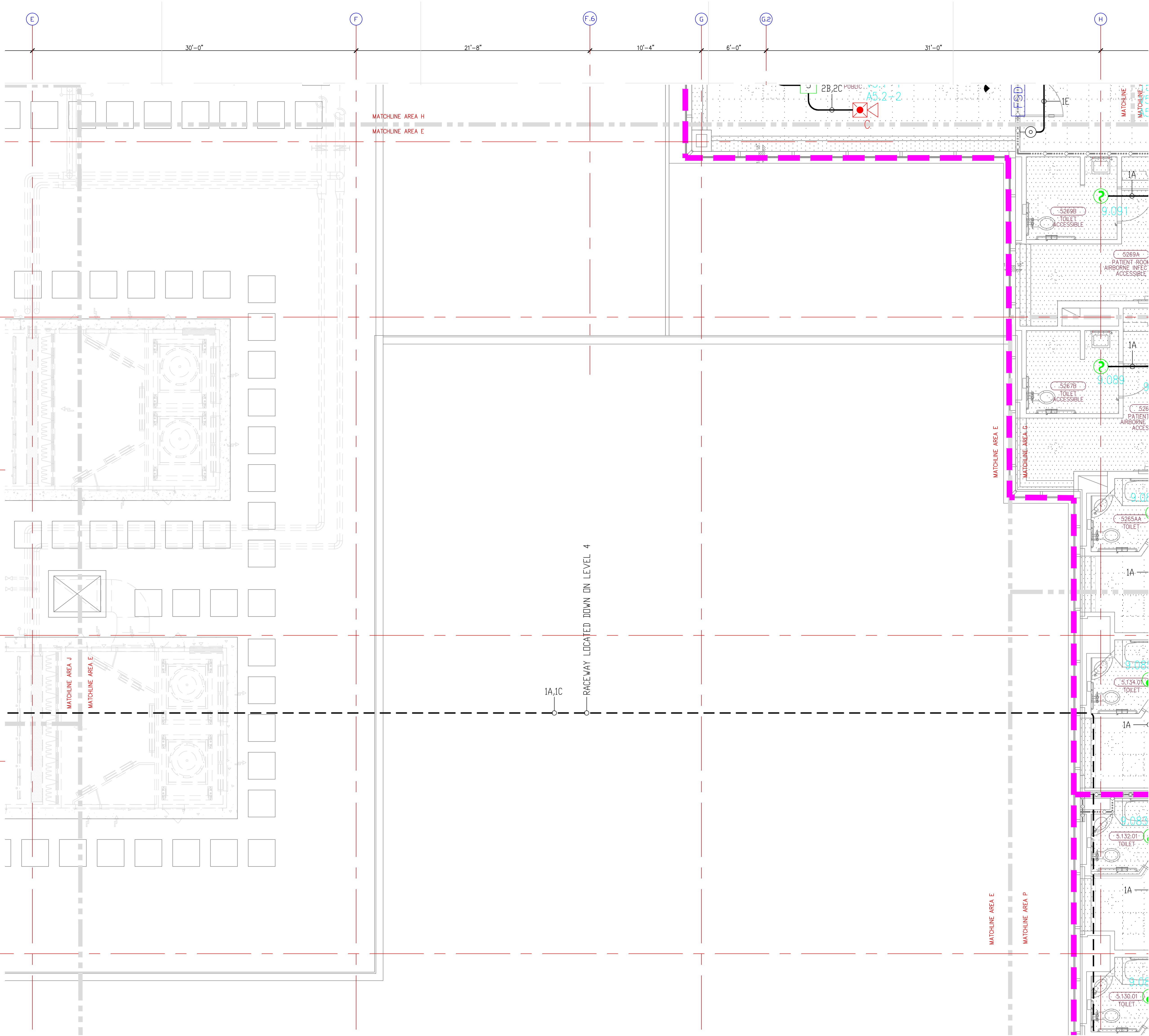
1) ALL RACEWAY RUNS INDICATED WITHIN THIS DRAWING PACKAGE ARE SHOWN DIAGRAMMATICALLY AND ARE FOR CIRCUITING PURPOSES ONLY. ALL RUNS SHOWN SHOULD NOT SERVE IN ANY WAY AS AN ACTUAL ROUTING GUIDE FOR INSTALLATION OF RACEWAYS. EXACT INSTALL LOCATION SHALL BE FIELD DETERMINED.

1.) ALL RACEWAY RUNS INDICATED WITHIN THIS DRAWING PACKAGE ARE SHOWN DIAGRAMMATICALLY AND ARE FOR CIRCUITING PURPOSES ONLY. ALL RUNS SHOWN SHOULD NOT SERVE IN ANY WAY AS AN ACTUAL ROUTING GUIDE FOR INSTALLATION OF RACEWAYS. EXACT INSTALL LOCATION SHALL BE FIELD DETERMINED.

2.) ADDITIONAL JUNCTION BOXES NOT SHOWN WITHIN THESE PLANS MAY BE REQUIRED TO ACCOMMODATE PROPER RACEWAY INSTALLATIONS & SIZING. IT IS THE ELECTRICAL CONTRACTORS RESPONSIBILITY TO DETERMINE THE NECESSARY AMOUNT OF JUNCTION BOXES/EXTENSION RINGS REQUIRED. ALL INSTALLATION MATERIAL SUCH AS CONDUIT FITTING, BOXES, AND HANGERS, ETC. NOT SUPPLIED BY SIEMENS.

3.) AS FIELD CONDITIONS DICTATE ACTUAL RACEWAY INSTALLATIONS, DEVICE BACK BOXES AND JUNCTION BOXES SHALL BE SIZED PER FIELD INSTALLING CONDITIONS. DEVICE BACK BOX SIZES INDICATED WITHIN THIS DRAWING PACKAGE ARE MINIMUM REQUIREMENTS ONLY. AN INCREASE IN BACK BOX DEPTH, ADDITION OF EXTENSION BOX/RING, ETC. MAY BE REQUIRED IN ORDER TO PROPERLY ACCOMMODATE FOR WIRE QUANTITIES INSTALLED WITHIN THE RACEWAY.

4.) THE INSTALLATION OF DEVICE BACKBOXES & WIRE SHALL BE SIZED AND INSTALLED PER CEC. IN ADDITION SUCH BOXES & WIRE SHALL BE INSTALLED IN A MANNER AS TO ALLOW FOR THE EASE OF DEVICE INSTALLATION. THE INSTALLATION OF DEVICES WHICH REQUIRE EXCESSIVE FORCE, THE PINCHING OF WIRES, RESULT IN GROUND FAULTS, ETC. IN ORDER TO PROPERLY SEAT THE DEVICE TO IT'S FINISHED SURFACE SHALL BE CONSIDERED UNACCEPTABLE. AND A NON-SIEMENS INSTALLATION STANDARD.



MCCARTHY APPROVAL

A. Approved as noted for Architectural Review

B. Review and Re-submit

C. Re-approve

This review is for general conformance with Plans and Specifications only. Any deviations from same not clearly noted by the Designer have not been reviewed. Reviewer shall not constitute a complete check of detailed dimensions or notes to verify the release the Designer of contractual responsibility for any error or deviation from contract requirements.

McCarthy

By: _____ On: _____

CHOP DRAWING REFERENCE NO. _____

INSTALLATION GUIDELINES

DEVICE BACKBOXES SHOULD NOT CONTAIN WIRE THAT DOES NOT SERVE ITS ASSOCIATED DEVICE. TO PREVENT BACKBOX OVERHILL & PROPER DEVICE INSTALL. ALL EFFORTS MUST BE MADE TO PREVENT UNNECESSARY WIRE FILL WITHIN DEVICE BACKBOXES. MOUNTING SPECIFICATIONS INDICATED WITHIN THE EQUIPMENT ADOVICE LEGEND ARE MINIMUM RECOMMENDATIONS. JUNCTION BOXES, EXTENSION RINGS, ETC. MUST BE INSTALLED AS NEEDED AND AS FIELD CONDITIONS DICTATE.

EXAMPLE:

1A,4B,2C,1D

1A,4B,2C,1D

1A,4B,2C,1D

15CD

15CD

DEPICTION OF DIAGRAMMATICAL INSTALL

EXAMPLE DEFINED:

1A,4B,2C,1D

1A,4B,2C,1D

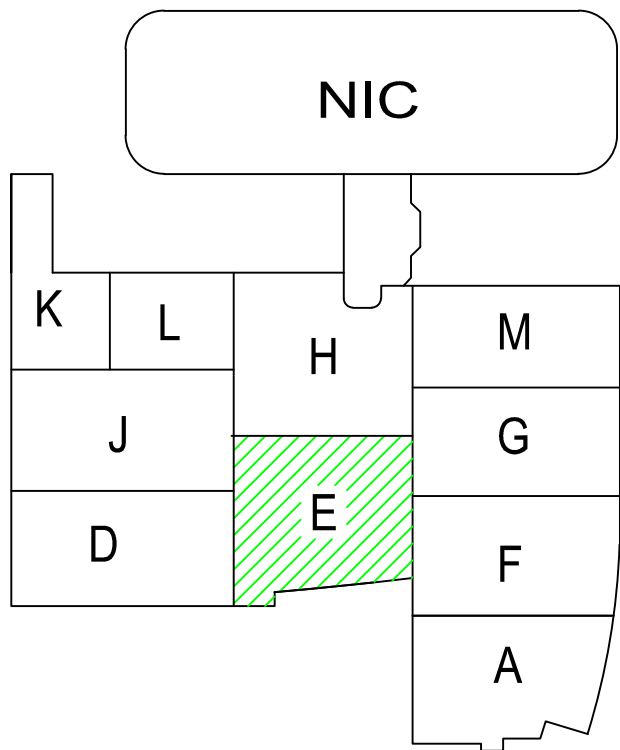
1A,4B,2C,1D

2B,2C

1A

15CD

DEPICTION OF ACTUAL INSTALL



Key Plan

N.T.S.

NORTH

SIEMENS

CALIFORNIA STATE CONTRACTORS
LICENSE NO.: #758796 - B/ C10/ C16/ C20

Siemens Building Technologies, Inc.
FIS FIRE/LIFE SAFETY DIVISION
10775 Business Center Drive
Cypress, California 90630 USA
Phone: (714) 761-2200
Fax: (714) 220-4956

This drawing and the information and design application herein contained is the property of SIEMENS BUILDING TECHNOLOGIES, Inc. and is loaned upon the express condition that the same be returned to SIEMENS BUILDING TECHNOLOGIES, Inc. upon request; all information herein contained shall be treated as secret and confidential; no reproduction of this drawing or part thereof shall be made without the written consent of SIEMENS BUILDING TECHNOLOGIES, Incorporated.

BEC

Building Electronic Controls, Inc.

BUILDING ELECTRONIC CONTROLS, INC.
2246 Lindsay Way
Glendora, CA 91740
PHONE: (909) 305-1600
FAX #: (909) 305-1604
LICENSE NO.: 729805
CLASSIFICATION (S): C-7 C10
EXPIRATION DATE: 11/30/2012
RICHARD TAYLOR

UL

NIC

- NOTES:
- ①

INTERFACE TO PATIENT ROOM DOME LIGHT. DOME LIGHT & POWER SHALL BE FURNISHED AND INSTALLED BY OTHERS.
- ②

NOT USED
- ③

INTERFACE TO VEN DOOR / ROLL-DOWN DOOR / SHUTTER FOR RELEASE. EQUIPMENT & POWER SHALL BE FURNISHED AND INSTALLED BY OTHERS.
- ④

INTERFACE FOR MONITORING STATUS OF EQUIPMENT.
- ⑤

SYNCHRONIZING CONFIGURATION OF ALL PAD PANELS.
- ⑥

KEY? ACTIVATION & MONITORING / GFI-RO MONITORING FOR PAD PANELS.
- ⑦

INTERFACE FOR RELEASE OF MAGNETIC DOOR HOLD OPEN DEVICES.
- ⑧

INTERFACE FOR RELEASE OF COMBINATION SMOKE FIRE DAMPER CIRCUITS (EXCLUDING ISOLATION ROOMS).
- ⑨

INTERFACE FOR ELEVATOR RECALL (PRIMARY)
- ⑩

INTERFACE FOR ELEVATOR RECALL (ALT-RECALL)
- ⑪

INTERFACE FOR ELEVATOR SHUNT TRIP
- ⑫

INTERFACE FOR ELEVATOR SHUNT TRIP (BATTERY)
- ⑬

INTERFACE FOR ELEVATOR CAB LIGHT (STEADY)
- ⑭

INTERFACE FOR ELEVATOR CAB LIGHT (FLASHING)
- ⑮

INTERFACE FOR RELEASE OF COMBINATION SMOKE FIRE DAMPER CIRCUITS FOR ISOLATION ROOMS ONLY.
- ⑯

INTERFACE FOR HVAC SHUTDOWN
- ⑰

INTERFACE FOR MONITORING OF DISCONNECT SWITCH
- ⑱

MONITOR MODULE TO MONITOR ASPIRATING SMOKE DETECTION PANEL.
-FIRE 2
-FIRE 1
-TROUBLE
- ⑲

CONTROL RELAY (GFI-RO) IS PROVIDED FOR ASPIRATING SMOKE DETECTION PANEL RESET
- ⑳

MONITOR MODULES TO MONITOR PREACTION PANEL
-ALARM
-SUPERVISORY
-TROUBLE
- ㉑

PROVIDE 120V AC, 200 AMP'S DEDICATED CIRCUIT FOR THE POWER SUPPLY
- ㉒

CONTROL RELAY (GFI-RO) IS PROVIDED FOR DIMMER CONTROLS ACTIVATION

- ☐ MXL

☐ XLS

☒ FS-250

☐ EST3

☐ SYSTEM3

☐ OTHER

OSHPD NO. #: IL-072072-30

07/20/12	DESIGN REVISION	-
11/21/11	DESIGN REVISION	-
07/21/11	DESIGN REVISION	-
05/02/11	FULLERTON FIRE DEPARTMENT CORRECTIONS	-
11/30/10	DISPATCH	LF
07/30/10	DISPATCH	LF
11/05/09	BACKGROUND REVISIONS	FM

Rev No.	Date	Remarks	Initial
Drawn	H,JEANG		
Checked	-		
Approved	-		
Date:	07.30.09		
Scale:	0'-1/4" = 1'-0"		

FIRE ALARM FLOORPLAN
LEVEL 5 – AREA E

Job Number: 440P-056306

Project: CHILDRENS HOSPITAL OF ORANGE COUNTY - TOWER II
455 SOUTH MAIN STREET
ORANGE, CALIFORNIA 92868-3874

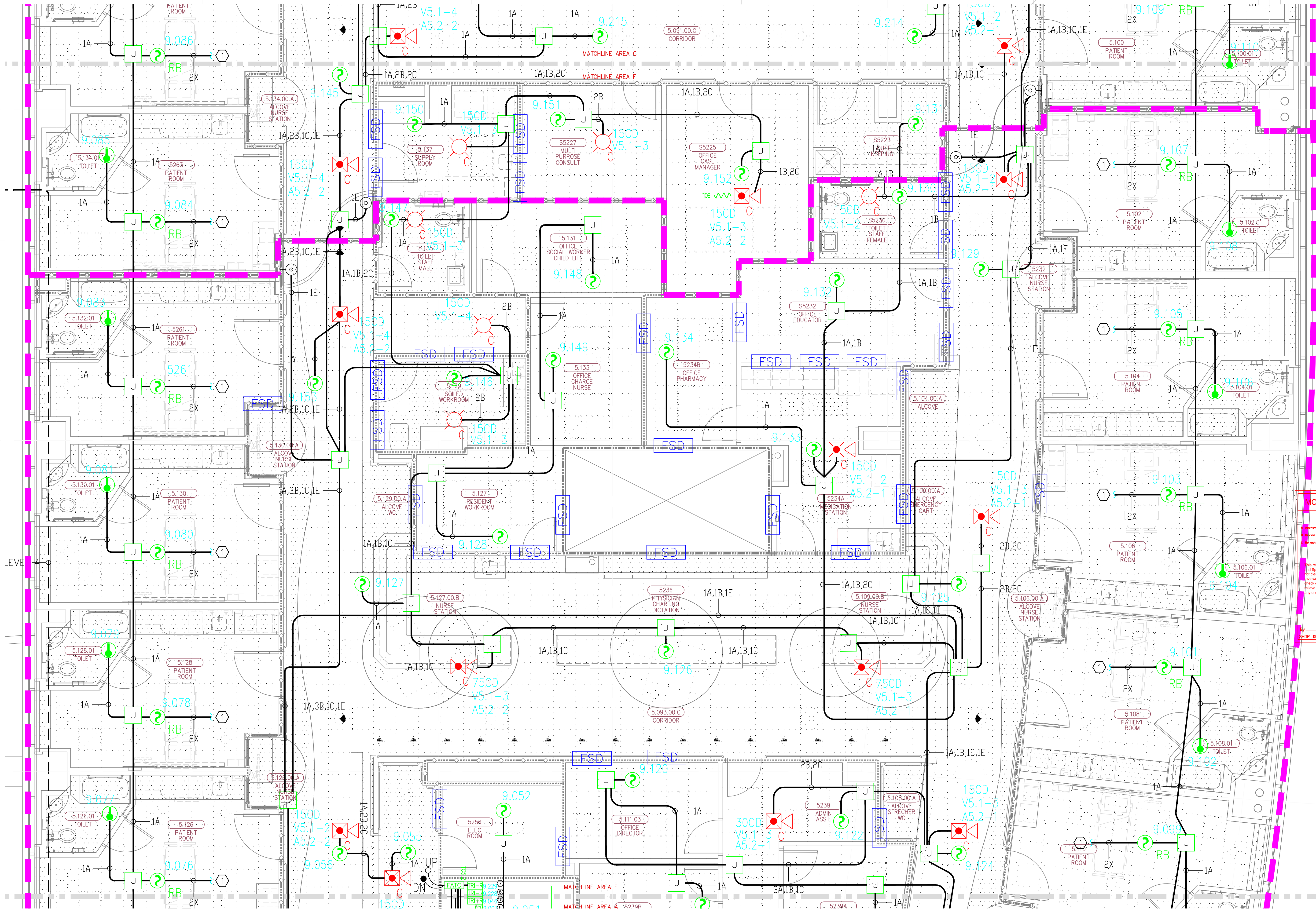
Drawing Number: EF3.5E

1) ALL RACEWAY RUNS INDICATED WITHIN THIS DRAWING PACKAGE ARE SHOWN DIAGRAMMATICALLY AND ARE FOR CIRCUITING PURPOSES ONLY. ALL RUNS SHOWN SHOULD NOT SERVE IN ANY WAY AS AN ACTUAL ROUTING GUIDE FOR INSTALLATION OF RACEWAYS. EXACT INSTALL LOCATION SHALL BE FIELD DETERMINED.

2) ADDITIONAL JUNCTION BOXES NOT SHOWN WITHIN THESE PLANS MAY BE REQUIRED TO ACCOMMODATE PROPER RACEWAY INSTALLATIONS & SIZING. IT IS THE ELECTRICAL CONTRACTORS RESPONSIBILITY TO DETERMINE THE NECESSARY AMOUNT OF JUNCTION BOXES/EXTENSION RINGS REQUIRED. ALL INSTALLATION MATERIAL, SUCH AS CONDUIT FITTING, BOXES, AND HANGERS, ETC. NOT SUPPLIED BY SIEMENS.

3) AS FIELD CONDITIONS DICTATE ACTUAL RACEWAY INSTALLATIONS, DEVICE BACK BOXES AND JUNCTION BOXES SHALL BE SIZED PER FIELD INSTALLING CONDITIONS. DEVICE BACK BOX SIZES INDICATED WITHIN THIS DRAWING PACKAGE ARE MINIMUM REQUIREMENTS ONLY. AN INCREASE IN BACK BOX DEPTH, ADDITION OF EXTENSION BOX/RING, ETC. MAY BE REQUIRED IN ORDER TO PROPERLY ACCOMMODATE FOR WIRE QUANTITIES INSTALLED WITHIN THE RACEWAY.

4) THE INSTALLATION OF DEVICE BACKBOXES & WIRE SHALL BE SIZED AND INSTALLED PER NEC. IN ADDITION SUCH BOXES & WIRE SHALL BE INSTALLED IN A MANNER AS TO ALLOW FOR THE EASE OF DEVICE INSTALLATION. THE INSTALLATION OF DEVICES WHICH REQUIRE EXCESSIVE FORCE, THE PINCHING OF WIRES, RESULT IN GROUND FAULTS, ETC. IN ORDER TO PROPERLY SEAT THE DEVICE TO IT'S FINISHED SURFACE SHALL BE CONSIDERED UNACCEPTABLE AND A NON-SIEMENS INSTALLATION STANDARD.



This drawing and the information and design application herein contained is the property of SIEMENS BUILDING TECHNOLOGIES, Inc. and is loaned upon the express condition that the same be returned to SIEMENS BUILDING TECHNOLOGIES, Inc. upon request; all information herein contained shall be treated as secret and confidential; no reproduction of this drawing or part thereof shall be made without the written consent of SIEMENS BUILDING TECHNOLOGIES, Incorporated.



BUILDING ELECTRONIC CONTROLS, INC.
2246 Lindsay Way
Glendora, CA 91740
PHONE: (909) 305-1600
FAX #: (909) 305-1604
LICENSE NO.: 729805
CLASSIFICATION: ESI-C-7 C10
EXPIRATION DATE: 11/30/2012
RICHARD TAYLOR



- NOTES:
- ① INTERFACE TO PATIENT ROOM BONE LIGHT, BONE LIGHT & POWER SHALL BE FURNISHED AND INSTALLED BY OTHERS.
 - ② NOT USED
 - ③ INTERFACE TO VEN DOOR / ROLL-DOWN DOOR / SHUTTER FOR RELEASE EQUIPMENT & POWER SHALL BE FURNISHED AND INSTALLED BY OTHERS.
 - ④ INTERFACE FOR MONITORING STATUS OF EQUIPMENT.
 - ⑤ SYNCHRONIZING CONFIGURATION OF ALL PAD PANELS.
 - ⑥ HSP ACTIVATION & MONITORING / HTRIS MONITORING FOR PAD PANELS.
 - ⑦ INTERFACE FOR RELEASE OF MAGNETIC DOOR HOLD OPEN DEVICES.
 - ⑧ INTERFACE FOR RELEASE OF COMBINATION SMOKE FIRE DAMPER CIRCUITS (EXCLUDING ISOLATION ROOMS).
 - ⑨ INTERFACE FOR ELEVATOR RECALL (PRIMARY).
 - ⑩ INTERFACE FOR ELEVATOR RECALL (ALT-RECALL).
 - ⑪ INTERFACE FOR ELEVATOR SHUNT TRIP.
 - ⑫ INTERFACE FOR ELEVATOR SHUNT TRIP (BATTERY).
 - ⑬ INTERFACE FOR ELEVATOR CAB LIGHT (STEADY).
 - ⑭ INTERFACE FOR ELEVATOR CAB LIGHT (FLASHING).
 - ⑮ INTERFACE FOR RELEASE OF COMBINATION SMOKE FIRE DAMPER CIRCUITS FOR ISOLATION ROOMS ONLY.
 - ⑯ INTERFACE FOR HVAC SHUTDOWN.
 - ⑰ INTERFACE FOR MONITORING OF DISCONNECT SWITCH.
 - ⑱ MONITOR MODULE TO MONITOR ASPIRATING SMOKE DETECTION PANEL.
 - ⑲ PRE-ALARM - FIRE 2 - TROUBLE
 - ⑳ CONTROL RELAY (HTRIS) IS PROVIDED FOR ASPIRATING SMOKE DETECTION PANEL RESET.
 - ㉑ MONITOR MODULES TO MONITOR PREACTION PANEL.
 - ㉒ -ALARM - SUPERVISORY - TROUBLE
 - ㉓ PROVIDE 120V AC, 200 AMP'S DEDICATED CIRCUIT FOR THE POWER SUPPLY.
 - ㉔ CONTROL RELAY (HTRIS) IS PROVIDED FOR DIMMER CONTROLS ACTIVATION.

- MXL VOICE XL3 SYSTEM3
XLS FS-250 EST3 OTHER

OSHPD NO. #: IL-072072-30

Rev No.	Date	Revision	Initials
1	11/27/11	DESIGN REVISION	
2	07/27/11	DESIGN REVISION	
3	07/27/11	DESIGN REVISION	
4	05/02/11	FULLERTON FIRE DEPARTMENT CORRECTIONS	
5	11/30/10	DESIGN REVISION	
6	07/30/10	DESIGN REVISION	
7	11/05/09	BACKGROUND REVISIONS	

Rev No. Date Revision Initials

Drawn: H.JEANG

Checked: -

Approved: -

Date: 07.30.09

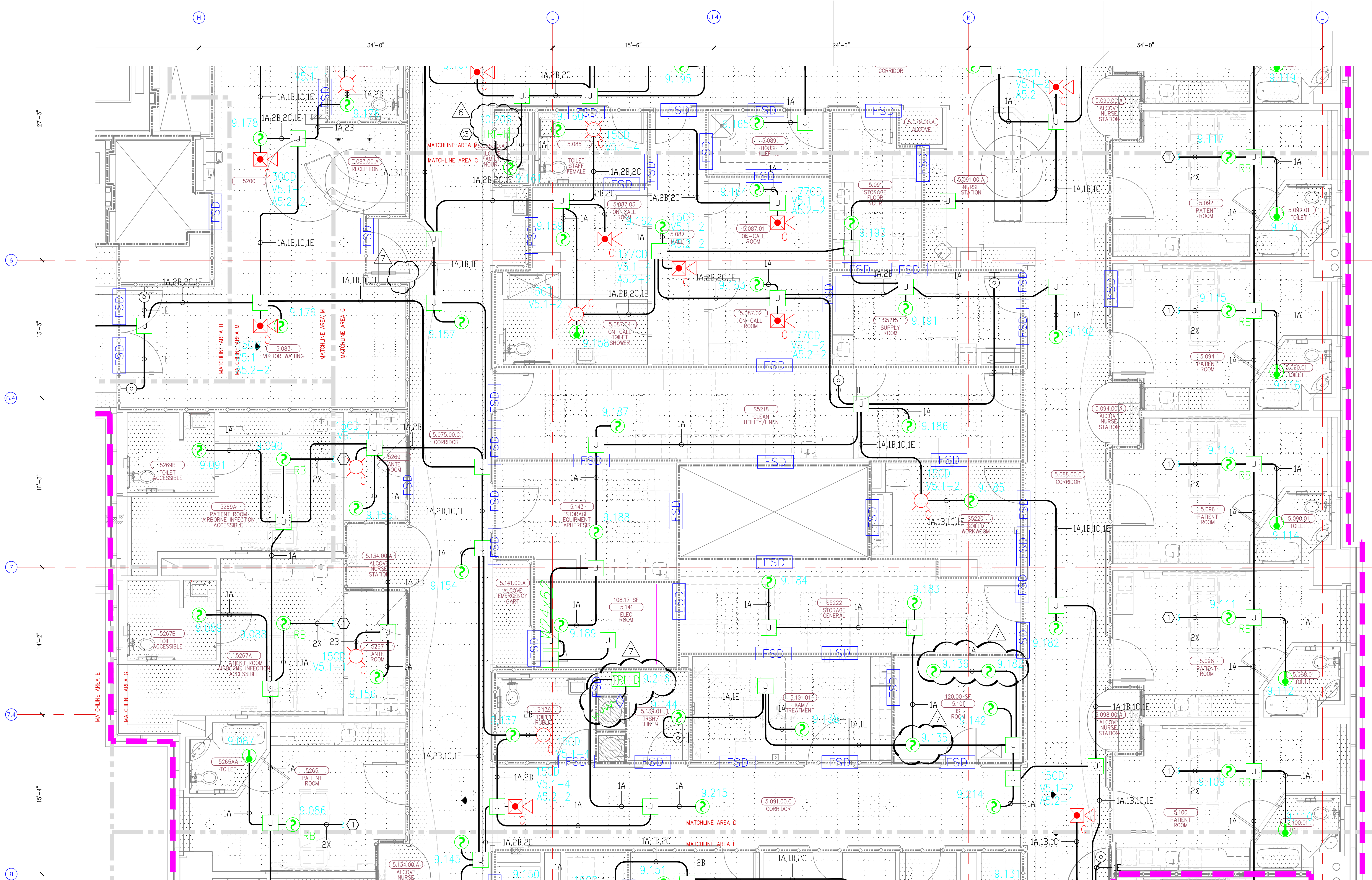
Scale: 0'-1/4" = 1'-0"

FIRE ALARM FLOORPLAN
LEVEL 5 - AREA G

Job Number: 440P-056306

Project: CHILDRENS HOSPITAL OF
ORANGE COUNTY - TOWER II
455 SOUTH MAIN STREET
ORANGE, CALIFORNIA 92668-3874

Drawing Number: EF3.5G



MCCARTHY APPROVAL

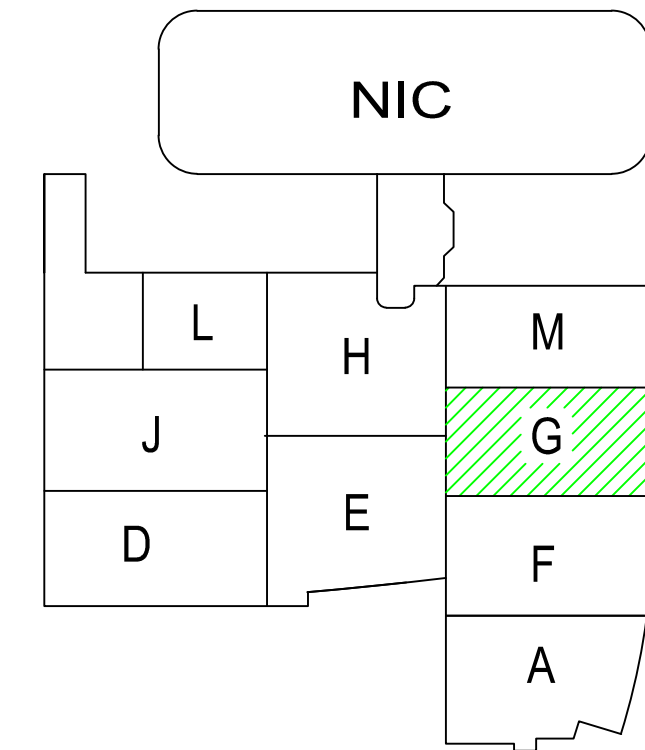
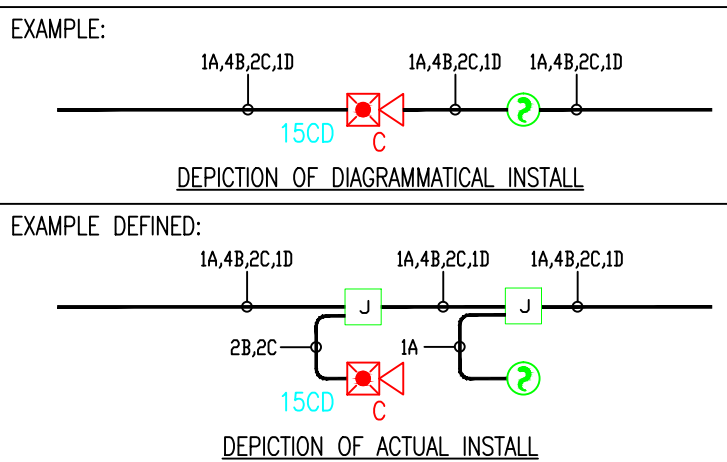
- A. Approved as noted for Architectural Review
B. Review and Re-submit
C. Rejected

This review is for general conformance with Plans and Specifications only. Any deviation from same is not intended to be a warranty or guarantee of any kind. Review shall not constitute a complete release of design liability or shift of liability to the contractor. The Designer shall remain responsible for any error or deviation from contract requirements.

McCarthy

By: _____ Date: _____
SHEP DRAWING REFERENCE NO.

INSTALLATION GUIDELINES
DEVICE BACKBOXES SHOULD NOT CONTAIN WIRE THAT DOES NOT SERVE ITS ASSOCIATED DEVICE. TO PREVENT BACKBOX OVERHEAT & PROPER DEVICE INSTALL, ALL EFFORTS MUST BE MADE TO PREVENT UNNECESSARY WIRE FILL WITHIN DEVICE BACKBOXES. MOUNTING SPECIFICATIONS INDICATED WITHIN THE EQUIPMENT PROVIDE LEGEND ARE MINIMUM RECOMMENDATIONS. JUNCTION BOXES, EXTENSION RINGS, ETC. MUST BE INSTALLED AS NEEDED AND AS FIELD CONDITIONS DICTATE.



Key Plan
N.T.S.

NORTH



4) AS FIELD CONDITIONS DICTATE ACTUAL RACEWAY INSTALLATIONS, DEVICE BACK BOXES AND JUNCTION BOXES SHALL BE SIZED PER FIELD INSTALLING CONDITIONS. DEVICE BACK BOX SIZES INDICATED WITHIN THIS DRAWING PACKAGE ARE MINIMUM REQUIREMENTS ONLY. AN INCREASE IN BACK BOX DEPTH, ADDITION OF EXTENSION BOX/RING, ETC. MAY BE REQUIRED IN ORDER TO PROPERLY ACCOMMODATE FOR WIRE QUANTITIES INSTALLED WITHIN THE RACEWAY.

3) THE INSTALLATION OF DEVICE BACKBOXES & WIRE SHALL BE SIZED AND INSTALLED PER CEC. IN ADDITION SUCH BOXES & WIRE SHALL BE INSTALLED IN A MANNER AS TO ALLOW FOR THE EASE OF DEVICE INSTALLATION. THE INSTALLATION OF DEVICES WHICH REQUIRE EXCESSIVE FORCE, THE PINCHING OF WIRES, RESULT IN GROUND FAULTS, ETC. IN ORDER TO PROPERLY SEAT THE DEVICE TO IT'S FINISHED SURFACE SHALL BE CONSIDERED UNACCEPTABLE AND A NON-SIEMENS INSTALLATION STANDARD.

2) ADDITIONAL JUNCTION BOXES NOT SHOWN WITHIN THESE PLANS MAY BE REQUIRED TO ACCOMMODATE PROPER RACEWAY INSTALLATIONS & SIZING. IT IS THE ELECTRICAL CONTRACTORS RESPONSIBILITY TO DETERMINE THE NECESSARY AMOUNT OF JUNCTION BOXES/EXTENSION RINGS REQUIRED.

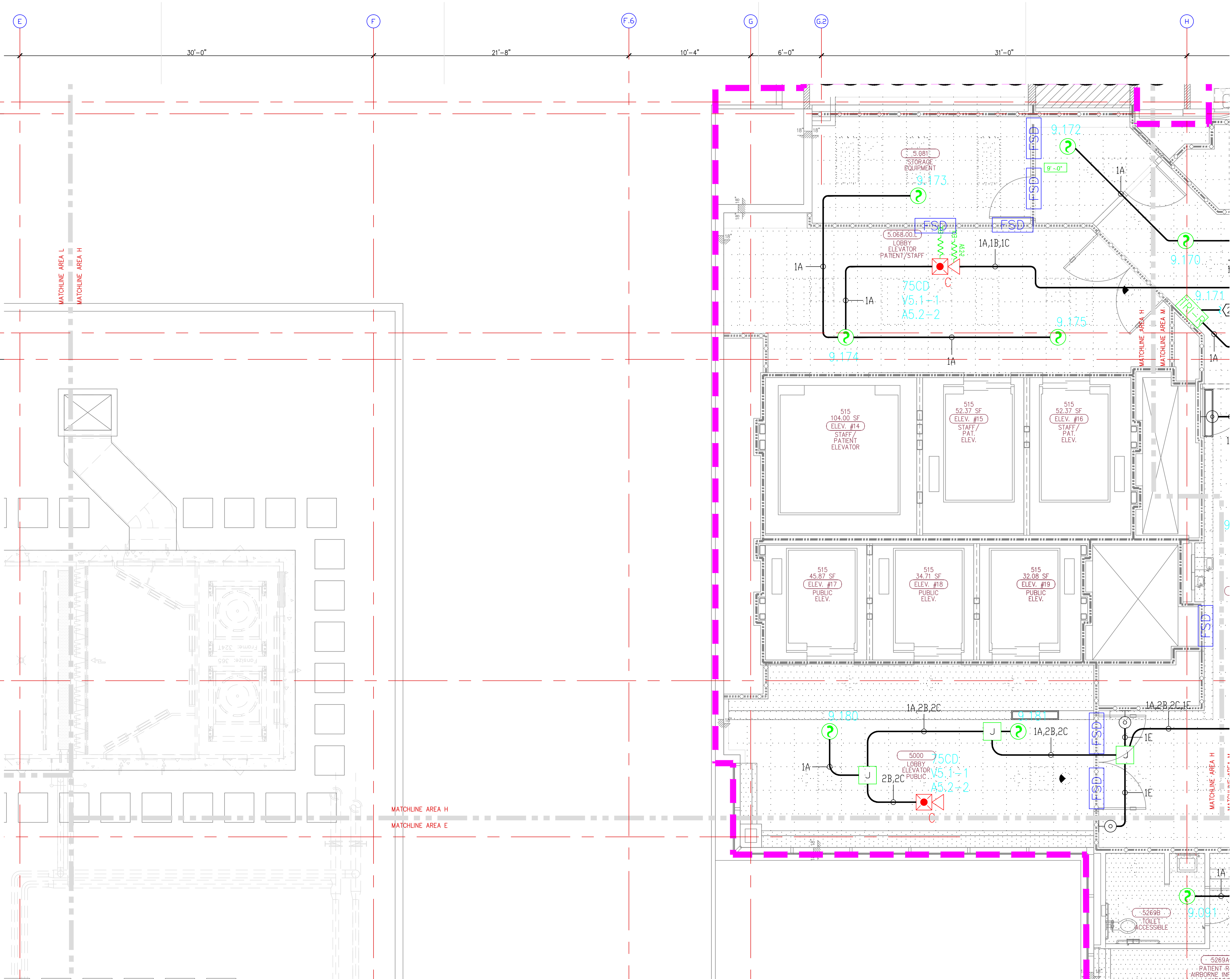
1) ALL RACEWAY RUNS INDICATED WITHIN THIS DRAWING PACKAGE ARE SHOWN DIAGRAMMATICALLY AND ARE FOR CIRCUITING PURPOSES ONLY. ALL RUNS SHOWN SHOULD NOT SERVE IN ANY WAY AS AN ACTUAL ROUTING GUIDE FOR INSTALLATION OF RACEWAYS. EXACT INSTALL LOCATION SHALL BE FIELD DETERMINED.

1) ALL RACEWAY RUNS INDICATED WITHIN THIS DRAWING PACKAGE ARE SHOWN DIAGRAMMATICALLY AND ARE FOR CIRCUITING PURPOSES ONLY. ALL RUNS SHOWN SHOULD NOT SERVE IN ANY WAY AS AN ACTUAL ROUTING GUIDE FOR INSTALLATION OF RACEWAYS. EXACT INSTALL LOCATION SHALL BE FIELD DETERMINED.

2) ADDITIONAL JUNCTION BOXES NOT SHOWN WITHIN THESE PLANS MAY BE REQUIRED TO ACCOMMODATE PROPER RACEWAY INSTALLATIONS & SIZING. IT IS THE ELECTRICAL CONTRACTORS RESPONSIBILITY TO DETERMINE THE NECESSARY AMOUNT OF JUNCTION BOXES/EXTENSION RINGS REQUIRED. ALL INSTALLATION MATERIAL SUCH AS CONDUIT FITTING, BOXES, AND HANGERS, ETC. NOT SUPPLIED BY SIEMENS.

3) AS FIELD CONDITIONS DICTATE ACTUAL RACEWAY INSTALLATIONS, DEVICE BACK BOXES AND JUNCTION BOXES SHALL BE SIZED PER FIELD INSTALLING CONDITIONS. DEVICE BACK BOX SIZES INDICATED WITHIN THIS DRAWING PACKAGE ARE MINIMUM REQUIREMENTS ONLY. AN INCREASE IN BACK BOX DEPTH, ADDITION OF EXTENSION BOX/RING, ETC. MAY BE REQUIRED IN ORDER TO PROPERLY ACCOMMODATE FOR WIRE QUANTITIES INSTALLED WITHIN THE RACEWAY.

4) THE INSTALLATION OF DEVICE BACKBOXES & WIRE SHALL BE SIZED AND INSTALLED PER NEC-110. ADDITION SUCH BOXES & WIRE SHALL BE INSTALLED IN A MANNER AS TO ALLOW FOR THE EASE OF DEVICE INSTALLATION. THE INSTALLATION OF DEVICES WHICH REQUIRE EXCESSIVE FORCE, THE PINCHING OF WIRES, RESULT IN GROUND FAULTS, ETC. IN ORDER TO PROPERLY SEAT THE DEVICE TO IT'S FINISHED SURFACE SHALL BE CONSIDERED UNACCEPTABLE AND A NON-SIEMENS INSTALLATION STANDARD.



McCarthy APPROVAL

A. Approved as noted for architectural Review

B. Review and Reinstall

C. Reinspect

This review is for general conformance with Plans and Specifications only. Any deviations from same not clearly noted by the Inspector have not been reviewed. Reviewer shall not constitute a complete check of installed dimensions or count to verify to, release the Inspector of contractual responsibility for any error or deviation from contract requirements.

McCarthy

By: _____ On: _____

CHOP DRAWING REFERENCE NO. _____

INSTALLATION GUIDELINES

DEVICE BACKBOXES SHOULD NOT CONTAIN WIRE THAT DOES NOT SERVE ITS ASSOCIATED DEVICE TO PREVENT BACKBOX OVERHEAT & PROPER DEVICE INSTALL. ALL DEVICES MUST BE MADE TO PREVENT UNNECESSARY WIRE FILL WITHIN DEVICE BACKBOXES. MOUNTING SPECIFICATIONS INDICATED WITHIN THE EQUIPMENT AGENCY LEGEND ARE MINIMUM RECOMMENDATIONS. JUNCTION BOXES, EXTENSION RINGS, ETC. MUST BE INSTALLED AS NEEDED AND AS FIELD CONDITIONS DICTATE.

EXAMPLE:

1A,1B,2C,1D

15CD

1A,1B,2C,1D

DEPICTION OF DIAGRAMMATICAL INSTALL

EXAMPLE DEFINED:

1A,1B,2C,1D

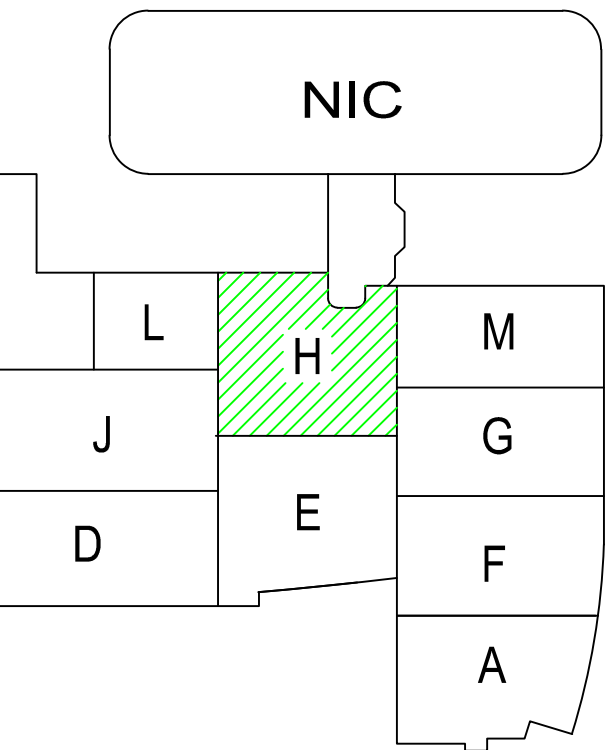
2B,2C

1A

15CD

1A,1B,2C,1D

DEPICTION OF ACTUAL INSTALL



Key Plan

N.T.S.

NORTH

SIEMENS

CALIFORNIA STATE CONTRACTORS
LICENSE NO.: #758796 - B/ C10/ C16/ C20

Siemens Building Technologies, Inc.
FIS FIRE/LIFE SAFETY DIVISION
10775 Business Center Drive
Cypress, California 90630 USA
Phone: (714) 761-2200
Fax: (714) 220-4958

This drawing and the information and design application herein contained is the property of SIEMENS BUILDING TECHNOLOGIES, Inc. and is loaned upon the express condition that the same be returned to SIEMENS BUILDING TECHNOLOGIES, Inc. upon request; all information herein contained shall be treated as secret and confidential; no reproduction of this drawing or part thereof shall be made without the written consent of SIEMENS BUILDING TECHNOLOGIES, Incorporated.

BEC

Building Electronic Controls, Inc.

BUILDING ELECTRONIC CONTROLS, INC.
2246 Lindsay Way
Glendora, CA 91740
PHONE: (909) 305-1600
FAX #: (909) 305-1604
LICENSE NO.: 728905
CLASSIFICATION (S): C-7 C10
EXPIRATION DATE: 11/30/2012
RICHARD TAYLOR

UL

NIC

NOTES:

① INTERFACE TO PATIENT ROOM DOOR LIGHT. DOOR LIGHT & POWER SHALL BE FURNISHED AND INSTALLED BY OTHERS.

② NOT USED

③ INTERFACE TO VEN DOOR / ROLL-DOWN DOOR / SHUTTER FOR RELEASE EQUIPMENT & POWER SHALL BE FURNISHED AND INSTALLED BY OTHERS.

④ INTERFACE FOR MONITORING STATUS OF EQUIPMENT.

⑤ SYNCHRONIZING CONFIGURATION OF ALL PAD PANELS.

⑥ KEY ACTIVATION & MONITORING / HTRI-20 MONITORING FOR PAD PANELS.

⑦ INTERFACE FOR RELEASE OF MAGNETIC DOOR HOLD OPEN DEVICES.

⑧ INTERFACE FOR RELEASE OF COMBINATION SMOKE FIRE DAMPER CIRCUITS (EXCLUDING ISOLATION ROOMS).

⑨ INTERFACE FOR ELEVATOR RECALL (PRIMARY)

⑩ INTERFACE FOR ELEVATOR RECALL (ALT-RECALL)

⑪ INTERFACE FOR ELEVATOR SHUNT TRIP

⑫ INTERFACE FOR ELEVATOR SHUNT TRIP (BATTERY)

⑬ INTERFACE FOR ELEVATOR CAB LIGHT (STEADY)

⑭ INTERFACE FOR ELEVATOR CAB LIGHT (FLASHING)

⑮ INTERFACE FOR RELEASE OF COMBINATION SMOKE FIRE DAMPER CIRCUITS FOR ISOLATION ROOMS ONLY.

⑯ INTERFACE FOR HVAC SHUTDOWN

⑰ INTERFACE FOR MONITORING OF DISCONNECT SWITCH

⑱ MONITOR MODULE TO MONITOR ASPIRATING SMOKE DETECTION PANEL.
-FIRE 2
-TROUBLE
-FIRE 1

⑲ CONTROL RELAY (HTRI-20) IS PROVIDED FOR ASPIRATING SMOKE DETECTION PANEL RESET

⑳ MONITOR MODULES TO MONITOR PREACTION PANEL
-ALARM
-SUPERVISORY
-TROUBLE

㉑ PROVIDE 120V AC, 200 AMP'S DEDICATED CIRCUIT FOR THE POWER SUPPLY

㉒ CONTROL RELAY (HTRI-20) IS PROVIDED FOR DIMMER CONTROLS ACTIVATION

☐ MXL☐ XLS☐ FS-250☐ EST3☐ OTHER

☐ VOICE☐ FS-250☐ EST3☐ OTHER

☐ XL3☐ FS-250☐ EST3☐ OTHER

☐ SYSTEM3☐ FS-250☐ EST3☐ OTHER

OSHPD NO. #: IL-072072-30

RECORD

REVIEWS

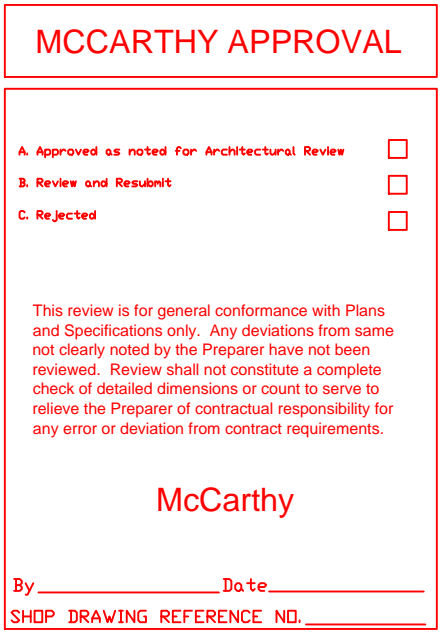
Rev No.	Date	Remarks	Initial
07/20/12	DESIGN REVISION		
11/21/11	DESIGN REVISION		
07/21/11	DESIGN REVISION		
05/02/11	FULLERTON FIRE DEPARTMENT CORRECTIONS		
11/30/10	DISPATCH		
07/30/10	DISPATCH		
11/05/09	BACKGROUND REVISIONS		

Job Number: 440P-056306

Project: CHILDRENS HOSPITAL OF ORANGE COUNTY - TOWER II
455 SOUTH MAIN STREET
ORANGE, CALIFORNIA 92668-3874

Drawing Number: EF3.5H

This drawing and the information and design application herein contained is the property of SIEMENS BUILDING TECHNOLOGIES, Inc. and is loaned upon the express condition that the same be returned to SIEMENS BUILDING TECHNOLOGIES, Inc. upon request; all information herein contained shall be treated as secret and confidential; no reproduction of this drawing or part thereof shall be made without the written consent of SIEMENS BUILDING TECHNOLOGIES, Incorporated.



1.) ALL RACEWAY RUNS INDICATED WITHIN THIS DRAWING PACKAGE ARE SHOWN DIAGRAMMATICALLY, AND ARE FOR CIRCUITING PURPOSES ONLY. ALL RUNS SHOWN SHOULD NOT SERVE IN ANY WAY AS AN ACTUAL ROUTING GUIDE FOR INSTALLATION OF RACEWAYS. EXACT INSTALL LOCATION SHALL BE FIELD DETERMINED.

SIEMENS

CALIFORNIA STATE CONTRACTORS
LICENSE NO.: #758796 - B/ C10/ C16/ C20

Siemens Building Technologies, Inc.
FIS FIRE/LIFE SAFETY DIVISION
10775 Business Center Drive
Cypress, California 90630 USA
Phone: (714) 761-2200
Fax: (714) 220-4958

This drawing and the information and design application herein contained is the property of SIEMENS BUILDING TECHNOLOGIES, Inc. and is loaned upon the express condition that the same be returned to SIEMENS BUILDING TECHNOLOGIES, Inc. upon request; all information herein contained shall be treated as secret and confidential; no reproduction of this drawing or part thereof shall be made without the written consent of SIEMENS BUILDING TECHNOLOGIES, Incorporated.



BUILDING ELECTRONIC CONTROLS, INC.
2246 Lindsay Way
Glendora, CA 91740
PHONE: (909) 305-1600
FAX #: (909) 305-1604
LICENSE NO.: 729805
CLASSIFICATION (S): C-7 C10
EXPIRATION DATE: 11/30/2012
RICHARD TAYLOR



- NOTES:
- ① INTERFACE TO PATIENT ROOM BONE LIGHT, DOME LIGHT & POWER SHALL BE FURNISHED AND INSTALLED BY OTHERS.
 - ② NOT USED
 - ③ INTERFACE TO VEN DOOR / ROLL-DOWN DOOR / SHUTTER FOR RELEASE. EQUIPMENT & POWER SHALL BE FURNISHED AND INSTALLED BY OTHERS.
 - ④ INTERFACE FOR MONITORING STATUS OF EQUIPMENT.
 - ⑤ SYNCHRONIZING CONFIGURATION OF ALL PAD PANELS.
 - ⑥ GEPY ACTIVATION & MONITORING / GTRI-S MONITORING FOR PAD PANELS.
 - ⑦ INTERFACE FOR RELEASE OF MAGNETIC DOOR HOLD OPEN DEVICES.
 - ⑧ INTERFACE FOR RELEASE OF COMBINATION SMOKE FIRE DAMPER CIRCUITS (EXCLUDING ISOLATION ROOMS).
 - ⑨ INTERFACE FOR ELEVATOR RECALL (PRIMARY)
 - ⑩ INTERFACE FOR ELEVATOR RECALL (ALT-RECALL)
 - ⑪ INTERFACE FOR ELEVATOR SHUNT TRIP
 - ⑫ INTERFACE FOR ELEVATOR SHUNT TRIP (BATTERY)
 - ⑬ INTERFACE FOR ELEVATOR CAB LIGHT (STEADY)
 - ⑭ INTERFACE FOR ELEVATOR CAB LIGHT (FLASHING)
 - ⑮ INTERFACE FOR RELEASE OF COMBINATION SMOKE FIRE DAMPER CIRCUITS FOR ISOLATION ROOMS ONLY.
 - ⑯ INTERFACE FOR HVAC SHUTDOWN
 - ⑰ INTERFACE FOR MONITORING OF DISCONNECT SWITCH
 - ⑱ MONITOR MODULE TO MONITOR ASPIRATING SMOKE DETECTION PANEL.
-FIRE 2
-FIRE 2
-TROUBLE
 - ⑲ CONTROL RELAY (GTRI-R) IS PROVIDED FOR ASPIRATING SMOKE DETECTION PANEL RESET
 - ⑳ MONITOR MODULES TO MONITOR PREACTION PANEL
-ALARM
-SUPERVISORY
-TROUBLE
 - ㉑ PROVIDE 120V AC, 20A AMP'S DEDICATED CIRCUIT FOR THE POWER SUPPLY
 - ㉒ CONTROL RELAY (GTRI-R) IS PROVIDED FOR DIMMER CONTROLS ACTIVATION

MCCARTHY APPROVAL

A. Approved as noted for architectural Review
B. Review and Rejected
C. Rejected

This review is for general conformance with Plans and Specifications only. Any deviations from same not clearly noted by the Designer have not been noted. Review shall not constitute a complete check of detailed dimensions or notes to verify the accuracy of construction requirements.

McCarthy

By: _____ Date: _____
CHIEF, DRAWING REFERENCE NO. _____

- ☐ MXL ☐ VOICE ☐ XL3 ☐ SYSTEM3
☒ XLS ☐ FS-250 ☐ EST3 ☐ OTHER

OSHPD NO. #: IL-072072-30

Rev No.	Date	Revision	Remarks	Initial
1	07/20/12	DESIGN REVISION		
2	11/21/11	DESIGN REVISION		
3	07/21/11	DESIGN REVISION		
4	05/02/11	FULLERTON FIRE DEPARTMENT CORRECTIONS		
5	11/30/10	DISPATCH		
6	07/30/10	DISPATCH		
7	11/05/09	BACKGROUND REVISIONS		

Rev No. Date Revision Remarks Initial

Drawn: H. JEANG

Checked: -

Approved: -

Date: 07.30.09

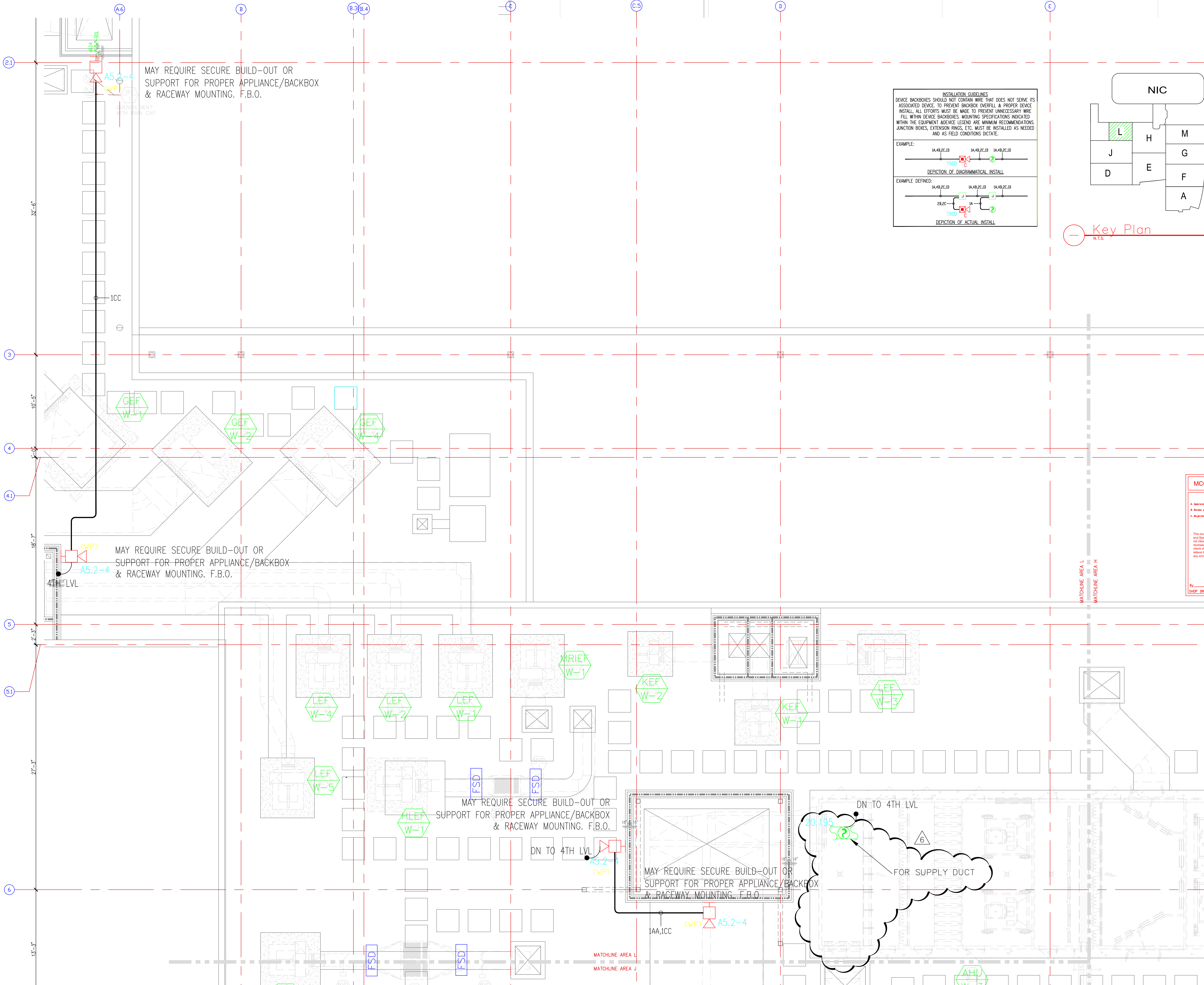
Scale: 0'-1/4" = 1'-0"

FIRE ALARM FLOORPLAN
LEVEL 5 - AREA L

Job Number: 440P-056306

Project: CHILDRENS HOSPITAL OF
ORANGE COUNTY - TOWER II
455 SOUTH MAIN STREET
ORANGE, CALIFORNIA 92668-3874

Drawing Number: EF3.5L



4) AS FIELD CONDITIONS DICTATE ACTUAL RACEWAY INSTALLATIONS, DEVICE BACK BOXES AND JUNCTION BOXES SHALL BE SIZED PER FIELD INSTALLING CONDITIONS. DEVICE BACK BOX SIZES INDICATED WITHIN THIS DRAWING PACKAGE ARE MINIMUM REQUIREMENTS ONLY. AN INCREASE IN BACK BOX DEPTH, ADDITION OF EXTENSION BOX/RING, ETC. MAY BE REQUIRED IN ORDER TO PROPERLY ACCOMMODATE FOR WIRE QUANTITIES INSTALLED WITHIN THE RACEWAY.

3) THE INSTALLATION OF DEVICE BACKBOXES & WIRE SHALL BE SIZED AND INSTALLED PER CEC. IN ADDITION SUCH BOXES & WIRE SHALL BE INSTALLED IN A MANNER AS TO ALLOW FOR THE EASE OF DEVICE INSTALLATION. THE INSTALLATION OF DEVICES WHICH REQUIRE EXCESSIVE FORCE, THE PINCHING OF WIRES, RESULT IN GROUND FAULTS, ETC. IN ORDER TO PROPERLY SEAT THE DEVICE TO IT'S FINISHED SURFACE SHALL BE CONSIDERED UNACCEPTABLE AND A NON-SIEMENS INSTALLATION STANDARD.

2) ADDITIONAL JUNCTION BOXES NOT SHOWN WITHIN THESE PLANS MAY BE REQUIRED TO ACCOMMODATE PROPER RACEWAY INSTALLATIONS & SIZING. IT IS THE ELECTRICAL CONTRACTORS RESPONSIBILITY TO DETERMINE THE NECESSARY AMOUNT OF JUNCTION BOXES/EXTENSION RINGS REQUIRED.

1) ALL RACEWAY RUNS INDICATED WITHIN THIS DRAWING PACKAGE ARE SHOWN DIAGRAMMATICALLY AND ARE FOR CIRCUITING PURPOSES ONLY. ALL RUNS SHOWN SHOULD NOT SERVE IN ANY WAY AS AN ACTUAL ROUTING GUIDE FOR INSTALLATION OF RACEWAYS. EXACT INSTALL LOCATION SHALL BE FIELD DETERMINED.

SMOKE COMPARTMENT C OCCUPANCY I-2

SIEMENS

CALIFORNIA STATE CONTRACTORS
LICENSE NO.: #758796 - B/ C10/ C16/ C20

Siemens Building Technologies, Inc.
FIS FIRE/LIFE SAFETY DIVISION
10775 Business Center Drive
Cypress, California 90630 USA
Phone: (714) 761-2200
Fax: (714) 220-4958

This drawing and the information and design application herein contained is the property of SIEMENS BUILDING TECHNOLOGIES, Inc. and is loaned upon the express condition that the same be returned to SIEMENS BUILDING TECHNOLOGIES, Inc. upon request; all information herein contained shall be treated as secret and confidential; no reproduction of this drawing or part thereof shall be made without the written consent of SIEMENS BUILDING TECHNOLOGIES, Incorporated.

BEC
Building Electronic Controls, Inc.

BUILDING ELECTRONIC CONTROLS, INC.

2248 Lindsay Way
Brea, CA 92610
PHONE: (909) 305-1600
FAX #: (909) 305-1604

LICENSE NO.: 729805
CLASSIFICATION: B1, C-7, C10
EXPIRATION DATE: 11/30/2012
RICHARD TAYLOR



- NOTES:
- ① INTERFACE TO PATIENT ROOM DOME LIGHT, DOME LIGHT & POWER SHALL BE FURNISHED AND INSTALLED BY OTHERS.
 - ② NOT USED
 - ③ INTERFACE TO VEN DOOR / ROLL-DOWN DOOR / SHUTTER FOR RELEASE. EQUIPMENT & POWER SHALL BE FURNISHED AND INSTALLED BY OTHERS.
 - ④ INTERFACE FOR MONITORING STATUS OF EQUIPMENT.
 - ⑤ SYNCHRONIZING CONFIGURATION OF ALL PAD PANELS.
 - ⑥ GEPY ACTIVATION & MONITORING / GTRI-DS MONITORING FOR PAD PANELS.
 - ⑦ INTERFACE FOR RELEASE OF MAGNETIC DOOR HOLD OPEN DEVICES.
 - ⑧ INTERFACE FOR RELEASE OF COMBINATION SMOKE FIRE DAMPER CIRCUITS (EXCLUDING ISOLATION ROOMS).
 - ⑨ INTERFACE FOR ELEVATOR RECALL (PRIMARY).
 - ⑩ INTERFACE FOR ELEVATOR RECALL (ALT-RECALL).
 - ⑪ INTERFACE FOR ELEVATOR SHUNT TRIP.
 - ⑫ INTERFACE FOR ELEVATOR SHUNT TRIP (BATTERY).
 - ⑬ INTERFACE FOR ELEVATOR CAB LIGHT (STEADY).
 - ⑭ INTERFACE FOR ELEVATOR CAB LIGHT (FLASHING).
 - ⑮ INTERFACE FOR RELEASE OF COMBINATION SMOKE FIRE DAMPER CIRCUITS FOR ISOLATION ROOMS ONLY.
 - ⑯ INTERFACE FOR HVAC SHUTDOWN.
 - ⑰ INTERFACE FOR MONITORING OF DISCONNECT SWITCH.
 - ⑱ MONITOR MODULE TO MONITOR ASPIRATING SMOKE DETECTION PANEL.
 - ⑲ PRE-ALARM - FIRE 2 - TROUBLE
 - ⑳ CONTROL RELAY (GTRI-DS) IS PROVIDED FOR ASPIRATING SMOKE DETECTION PANEL RESET.
 - ㉑ MONITOR MODULES TO MONITOR PREACTION PANEL.
 - ㉒ -ALARM - SUPERVISORY - TROUBLE
 - ㉓ PROVIDE 120V AC, 20A MPD DEDICATED CIRCUIT FOR THE POWER SUPPLY.
 - ㉔ CONTROL RELAY (GTRI-DS) IS PROVIDED FOR DIMMER CONTROLS ACTIVATION.

☐ MXL ☐ VOICE ☐ XL3 ☐ SYSTEMS
☒ XLS ☐ FS-250 ☐ EST3 ☐ OTHER

OSHPD NO. #: IL-072072-30

Rev No.	Date	Remarks	Initial
1	07/20/12	DESIGN-REVISION	
2	11/21/11	DESIGN-REVISION	
3	07/21/11	DESIGN-REVISION	
4	05/02/11	FULLERTON FIRE DEPARTMENT CORRECTIONS	
5	11/30/10	DISPATCH AREA	LF
6	07/30/10	DISPATCH AREA	LF
7	11/05/09	BACKGROUND-REVISIONS	FM

Rev No. Date Remarks Initial

Drawn: H.JEANG

Checked: -

Approved: -

Date: 07.30.09

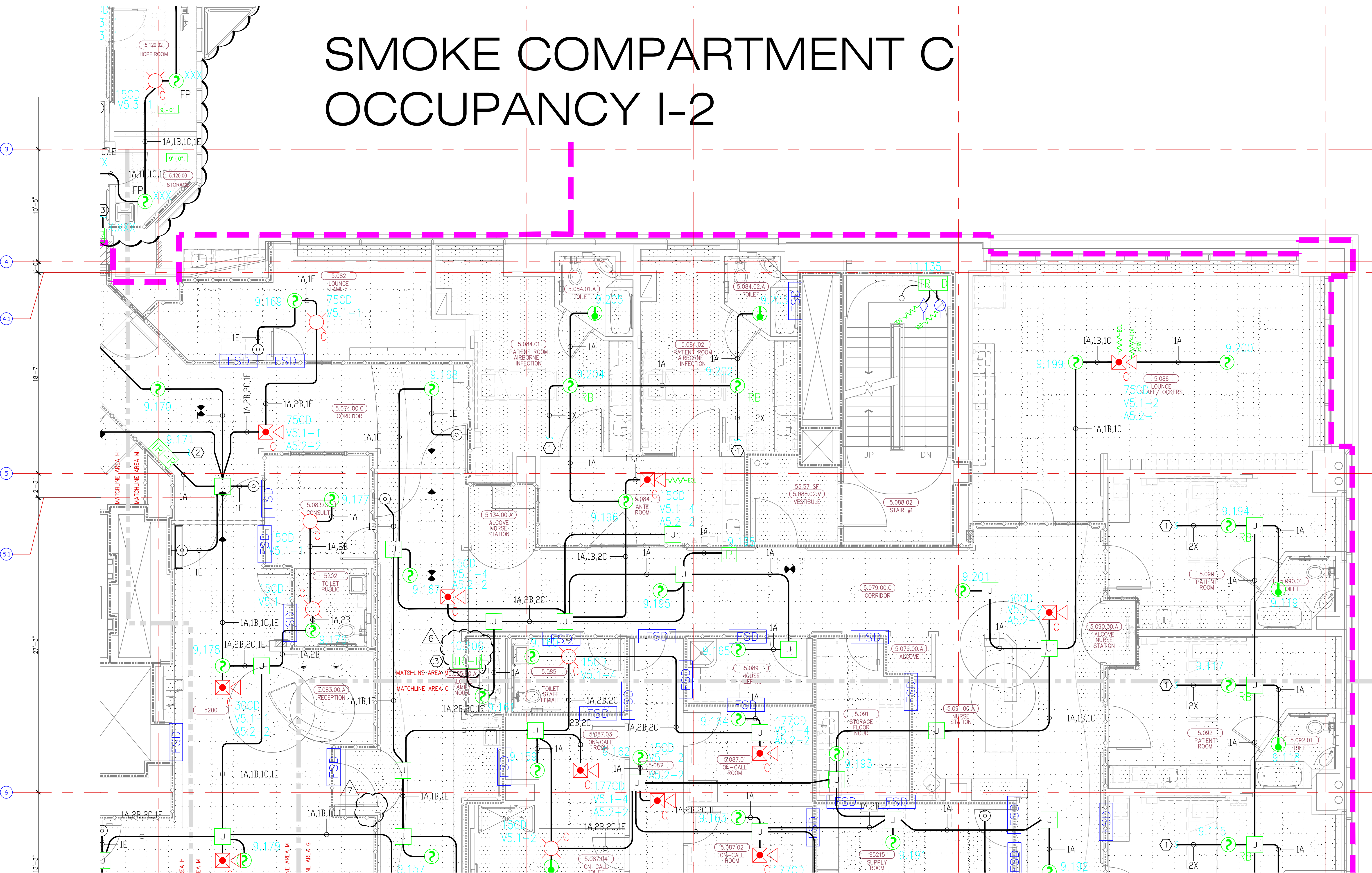
Scale: 0'-1/4" = 1'-0"

FIRE ALARM FLOORPLAN
LEVEL 5 - AREA M

Job Number: 440P-056306

Project: CHILDRENS HOSPITAL OF
ORANGE COUNTY - TOWER II
455 SOUTH MAIN STREET
ORANGE, CALIFORNIA 92668-3874

Drawing Number: EF3.5M



MCCARTHY APPROVAL

A. Approved as noted for Architectural Review
B. Review and Re-submit
C. Rejected

This review is for general conformance with Plans and Specifications only. Any deviations from same not clearly noted by the Approver hereon shall not be construed as approval. Review shall not constitute a complete check of installed dimensions or shall be taken to release the Approver of contractual responsibility for any error or deviation from contract requirements.

McCarthy

By: _____ Date: _____

SHEP DRAWING REFERENCE NO.

INSTALLATION GUIDELINES

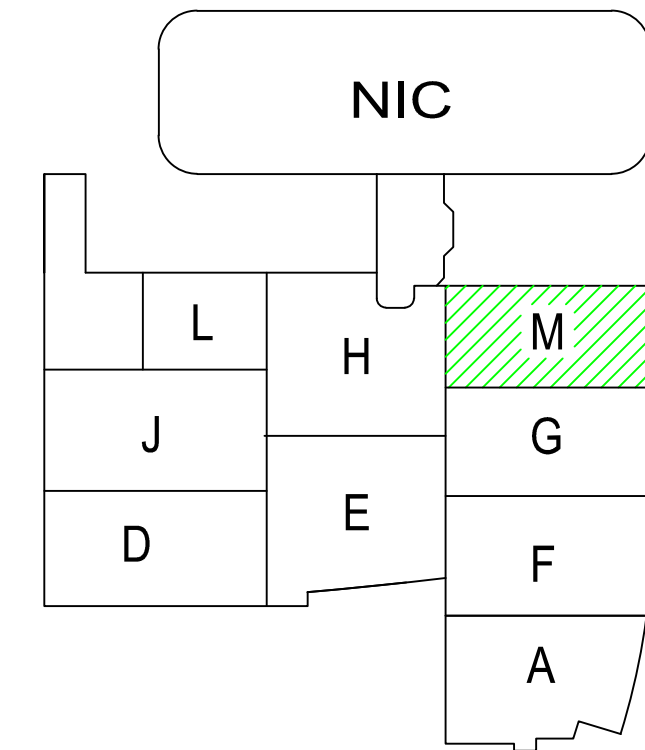
DEVICE BACKBOXES SHOULD NOT CONTAIN WIRE THAT DOES NOT SERVE ITS ASSOCIATED DEVICE. TO PREVENT BACKBOX OVERHEAT & PROPER DEVICE INSTALL, ALL EFFORTS MUST BE MADE TO PREVENT UNNECESSARY WIRE FILL WITHIN DEVICE BACKBOXES. MOUNTING SPECIFICATIONS INDICATED WITHIN THE EQUIPMENT ADVISE LEGEND ARE MINIMUM RECOMMENDATIONS. JUNCTION BOXES, EXTENSION RINGS, ETC. MUST BE INSTALLED AS NEEDED AND AS FIELD CONDITIONS DICTATE.

EXAMPLE: 1A/4B/2C/1D 1A/4B/2C/1D 1A/4B/2C/1D

DEPICTION OF DIAGRAMMATICAL INSTALL

EXAMPLE DEFINED: 1A/4B/2C/1D 1A/4B/2C/1D 1A/4B/2C/1D

DEPICTION OF ACTUAL INSTALL



Key Plan

N.T.S.

NORTH



4) AS FIELD CONDITIONS DICTATE ACTUAL RACEWAY INSTALLATIONS, DEVICE BACK BOXES AND JUNCTION BOXES SHALL BE SIZED PER FIELD INSTALLING CONDITIONS. DEVICE BACK BOX SIZES INDICATED WITHIN THIS DRAWING PACKAGE ARE MINIMUM REQUIREMENTS ONLY. AN INCREASE IN BACK BOX DEPTH, ADDITION OF EXTENSION BOX/RING, ETC. MAY BE REQUIRED IN ORDER TO PROPERLY ACCOMMODATE FOR WIRE QUANTITIES INSTALLED WITHIN THE RACEWAY.

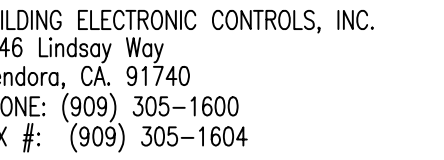
3) THE INSTALLATION OF DEVICE BACKBOXES & WIRE SHALL BE SIZED AND INSTALLED PER CEC. IN ADDITION SUCH BOXES & WIRE SHALL BE INSTALLED IN A MANNER AS TO ALLOW FOR THE EASE OF DEVICE INSTALLATION. THE INSTALLATION OF DEVICES WHICH REQUIRE EXCESSIVE FORCE, THE PINCHING OF WIRES, RESULT IN GROUND FAULTS, ETC. IN ORDER TO PROPERLY SEAT THE DEVICE TO IT'S FINISHED SURFACE SHALL BE CONSIDERED UNACCEPTABLE. AND A NON-SIEMENS INSTALLATION STANDARD.

2) ADDITIONAL JUNCTION BOXES NOT SHOWN WITHIN THESE PLANS MAY BE REQUIRED TO ACCOMMODATE PROPER RACEWAY INSTALLATIONS & SIZING. IT IS THE ELECTRICAL CONTRACTORS RESPONSIBILITY TO DETERMINE THE NECESSARY AMOUNT OF JUNCTION BOXES/EXTENSION RINGS REQUIRED.

1) ALL RACEWAY RUNS INDICATED WITHIN THIS DRAWING PACKAGE ARE SHOWN DIAGRAMMATICALLY AND ARE FOR CIRCUITING PURPOSES ONLY. ALL RUNS SHOWN SHOULD NOT SERVE IN ANY WAY AS AN ACTUAL ROUTING GUIDE FOR INSTALLATION OF RACEWAYS. EXACT INSTALL LOCATION SHALL BE FIELD DETERMINED.

CALIFORNIA STATE CONTRACTORS
LICENSE NO.: #758796 - B/ C10/ C16/ C20

is drawing and the information and design application herein contained is the property of SIEMENS BUILDING TECHNOLOGIES, Inc. and is loaned upon the express condition that the same be returned to SIEMENS BUILDING TECHNOLOGIES, Inc. upon request; all information herein contained shall be treated as secret and confidential; no production of this drawing or part thereof shall be made without the written consent of SIEMENS BUILDING TECHNOLOGIES, Incorporated.



- | | | | |
|-----|---------------------------------|-------------------------------|----------------------------------|
| MXL | <input type="checkbox"/> VOICE | <input type="checkbox"/> XL3 | <input type="checkbox"/> SYSTEM3 |
| XLS | <input type="checkbox"/> FS-250 | <input type="checkbox"/> EST3 | <input type="checkbox"/> OTHER |

OSHPD NO. #: IL-072072-30

07/20/12	DESIGN REVISION	-
11/21/11	DESIGN REVISION	-
07/21/11	DESIGN REVISION	-
05/02/11	FULLERTON FIRE DEPARTMENT CORRECTIONS	-
11/30/10	OSHPD BACKCHECK #1	LF
07/30/10	OSHPD BACKCHECK #1	-
11/05/09	BACKGROUND REVISIONS	PM

No.	Date	Remarks	Initial
own	H. IFANG		

QWR: H. JEANG

checked: -

proved: =

07.00.00

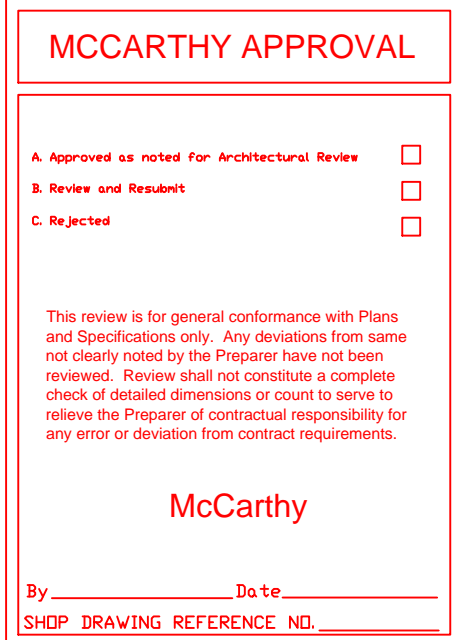
ale: $0' - 1/4'' = 1' - 0''$

FIRE ALARM FLOORPLAN
LEVEL 5 - AREA P

44OP-056306

ject: CHILDRENS HOSPITAL OF
ORANGE COUNTY - TOWER II
455 SOUTH MAIN STREET
ORANGE, CALIFORNIA 92868-3874

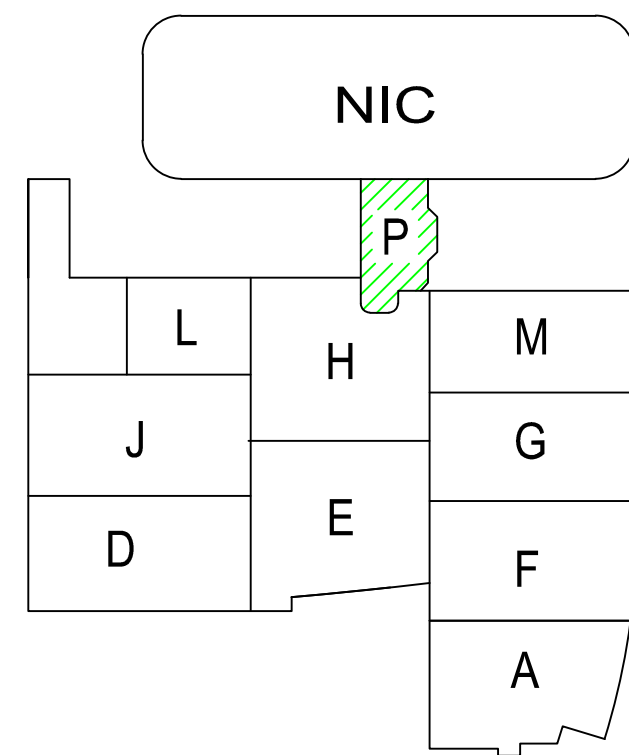
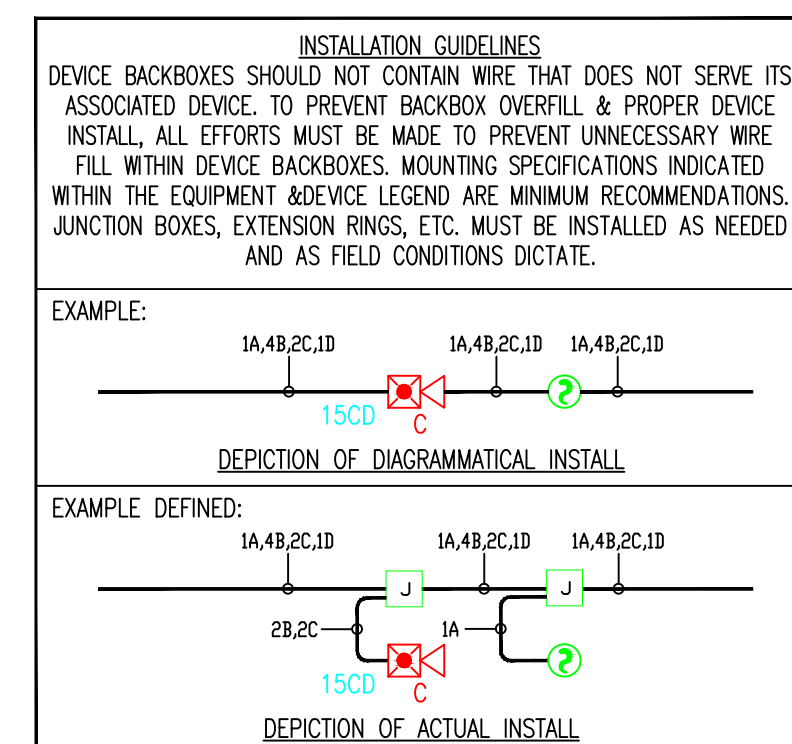
EF3.5P



3.) THE INSTALLATION OF DEVICE BACKBOXES & WIRE SHALL BE SIZED AND INSTALLED PER CEC. IN ADDITION SUCH BOXES & WIRE SHALL BE INSTALLED IN A MANNER AS TO ALLOW FOR THE EASE OF DEVICE INSTALLATION. THE INSTALLATION OF DEVICES WHICH REQUIRE EXCESSIVE FORCE, THE PINCHING OF WIRES, RESULT IN GROUND FAULTS, ETC. IN ORDER TO PROPERLY SEAT THE DEVICE TO IT'S FINISHED SURFACE SHALL BE CONSIDERED UNACCEPTABLE AND A NON-SIEMENS INSTALLATION STANDARD).

2.) ADDITIONAL JUNCTION BOXES NOT SHOWN WITHIN THESE PLANS MAY BE REQUIRED TO ACCOMMODATE PROPER RACEWAY INSTALLATIONS & SIZING. IT IS THE ELECTRICAL CONTRACTORS RESPONSIBILITY TO DETERMINE THE NECESSARY AMOUNT OF JUNCTION BOXES/EXTENSION RINGS REQUIRED.

1.) ALL RACEWAY RUNS INDICATED WITHIN THIS DRAWING PACKAGE ARE SHOWN DIAGRAMMATICALLY AND ARE FOR CIRCUITING PURPOSES ONLY. ALL RUNS SHOWN SHOULD NOT SERVE IN ANY WAY AS AN ACTUAL ROUTING GUIDE FOR INSTALLATION OF RACEWAYS. EXACT INSTALL LOCATION SHALL BE FIELD DETERMINED.



Key Plan

