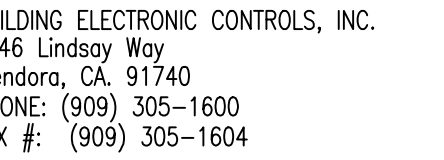


CALIFORNIA STATE CONTRACTORS
LICENSE NO.: #758796 - B/ C10/ C16/ C20

is drawing and the information and design application herein contained is the property of SIEMENS BUILDING TECHNOLOGIES, Inc. and is loaned upon the express condition that the same be returned to SIEMENS BUILDING TECHNOLOGIES, Inc. upon request; all information herein contained shall be treated as secret and confidential; no production of this drawing or part thereof shall be made without the written consent of SIEMENS BUILDING TECHNOLOGIES, Incorporated.



INTERFERENCE TO PATIENT ROOM LIGHT, DOOR, LIGHT, LIGHT & POWER SHALL BE FURNISHED AND INSTALLED BY OTHERS.

NOT USED.

INTERFERENCE TO WIND DOWN / RECALL-DOWN DOOR / SHUTTER FOR RELEASE EQUIPMENT & POWER SHALL BE FURNISHED AND INSTALLED BY OTHERS.

INTERFERENCE FOR MONITORING STATUS OF EQUIPMENT.

SYNCHRONIZING CONFIGURATION OF ALL PAID PANELS.

KEEP: ACTIVATION & MONITORING / (GRIFF-IR) MONITORING FOR PAID PANELS.

INTERFERENCE FOR RELEASE OF MAGNETIC DOOR HOLD OPEN DEVICES.

INTERFERENCE FOR RELEASE OF COMBINATION SMOKE FIRE DAMPER CIRCUITS (EXCLUDING ISOLATION ROOMS).

INTERFERENCE FOR ELEVATOR RECALL (PRIMARY).

INTERFERENCE FOR ELEVATOR RECALL (ALT-RECALL).

INTERFERENCE FOR ELEVATOR SHUNT TRIP.

INTERFERENCE FOR ELEVATOR SHUNT TRIP (BATTERY).

INTERFERENCE FOR ELEVATOR CAB LIGHT (STEADY).

INTERFERENCE FOR ELEVATOR CAB LIGHT (FLASHING).

INTERFERENCE FOR RELEASE OF COMBINATION SMOKE FIRE DAMPER CIRCUITS FOR PATIENT ROOMS ONLY.

INTERFERENCE FOR HVAC SHUTDOWN.

INTERFERENCE FOR MONITORING OF DISCONNECT SWITCH

MONITOR MODULE TO MONITOR ASPIRATING SMOKE DETECTION PANEL.

-PRE-ALARM -FIRE 2

-FIRE 1 -TROUBLE

MONITOR RELAY (GRIFF-IR) IS PROVIDED FOR ASPIRATING SMOKE DETECTION PANEL RESET.

MONITOR MODULES TO MONITOR PREACTION PANEL

-ALARM

-SUPERVISORY

-TROUBLE

PROVIDE 100V AC, 200 AMPS DEDICATED CIRCUIT FOR POWER SUPPLY.

CENTRAL RELAY (GRIFF-IR) IS PROVIDED FOR DUMPER CONTROLS ACTIVATION.

OSHPD NO. #: IL-072072-30

07/20/12	DESIGN REVISION	-
11/21/11	DESIGN REVISION	-
07/21/11	DESIGN REVISION	-
05/02/11	FULLERTON FIRE DEPARTMENT CORRECTIONS	-
11/30/10	OSHPD BACKCHECK #1	LF
07/30/10	OSHPD BACKCHECK #1	-
11/05/09	BACKGROUND REVISIONS	PM

No.	Date	Remarks	Initial
-----	------	---------	---------

awr H.JEANG

ecked: -

proved: -

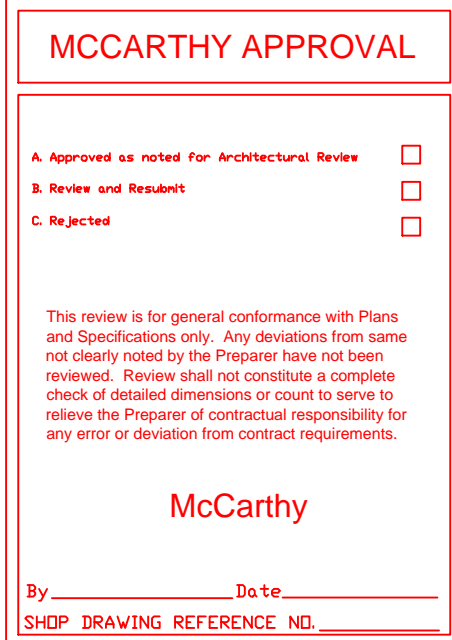
te:	07.30.09
ale:	$0'-1/16" = 1'-0"$

FIRE ALARM FLOORPLAN
LEVEL 7 - COMPOSITE

44OP-056306

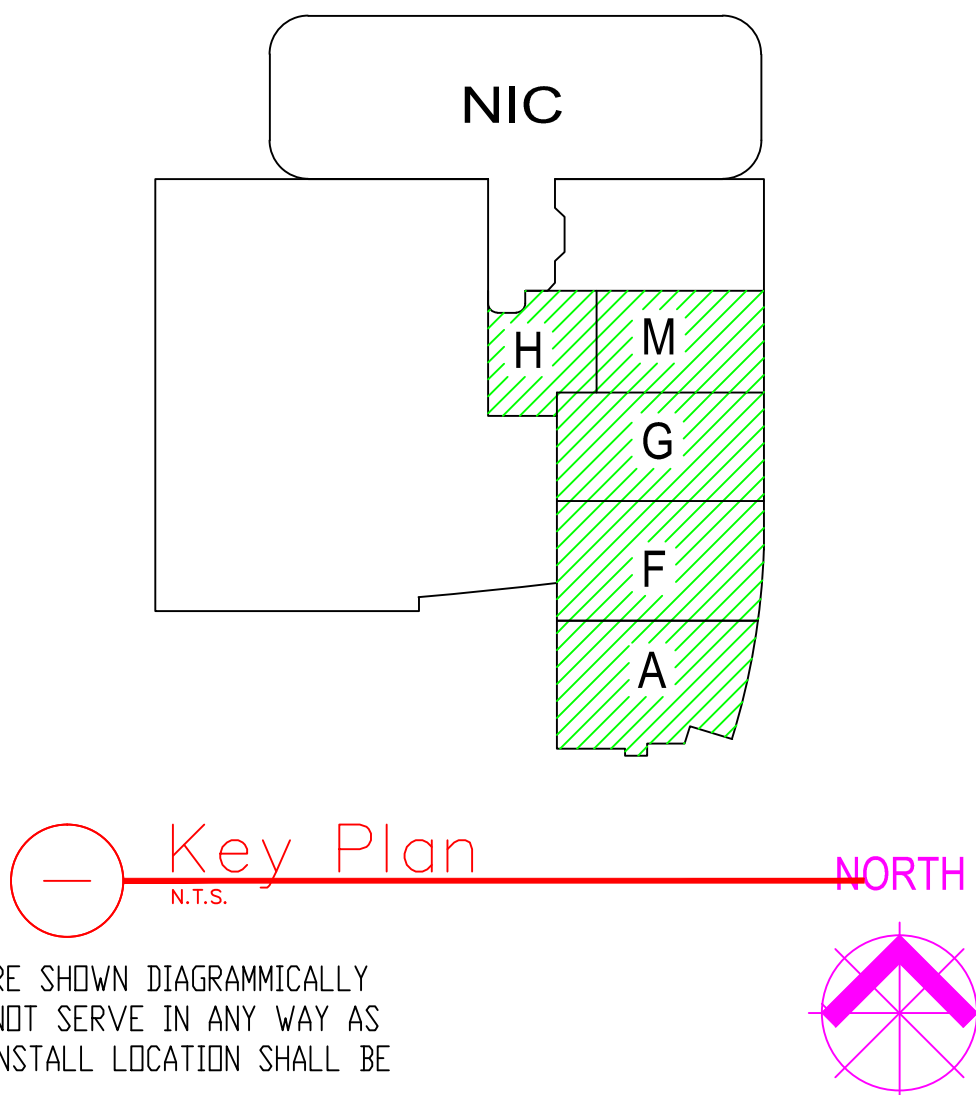
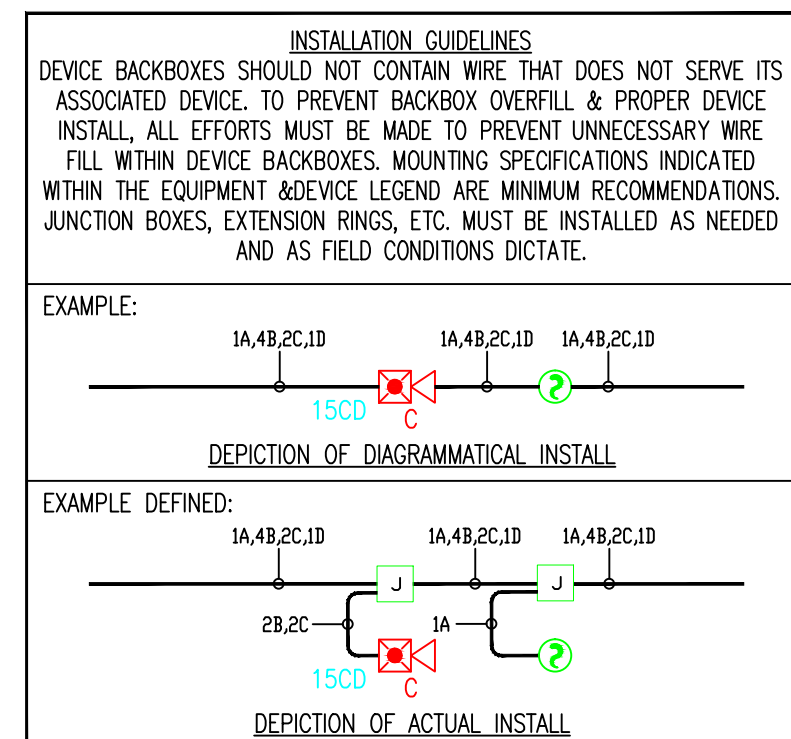
CHILDRENS HOSPITAL OF
ORANGE COUNTY - TOWER II
455 SOUTH MAIN STREET
ORANGE, CALIFORNIA 92868-3874

EF1.70



3.) THE INSTALLATION OF DEVICE BACKBOXES & WIRE SHALL BE SIZED AND INSTALLED PER CCC. IN ADDITION SUCH BOXES & WIRE SHALL BE INSTALLED IN A MANNER AS TO ALLOW FOR THE EASE OF DEVICE INSTALLATION. THE INSTALLATION OF DEVICES WHICH REQUIRE EXCESSIVE FORCE, THE PINCHING OF WIRES, RESULT IN GROUND FAULTS, ETC. IN ORDER TO PROPERLY SEAT THE DEVICE TO IT'S FINISHED SURFACE SHALL BE CONSIDERED UNACCEPTABLE AND A NON-SIEMENS INSTALLATION STANDARD.

1.) ALL RACEWAY RUNS INDICATED WITHIN THIS DRAWING PACKAGE ARE SHOWN DIAGRAMMATICALLY AND ARE FOR CIRCUITING PURPOSES ONLY. ALL RUNS SHOWN SHOULD NOT SERVE IN ANY WAY AS AN ACTUAL ROUTING GUIDE FOR INSTALLATION OF RACEWAYS. EXACT INSTALL LOCATION SHALL BE FIELD DETERMINED.






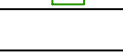


BEC
Building Electronic Controls, Inc.

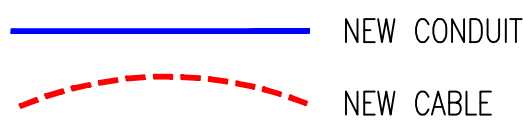
BUILDING ELECTRONIC CONTROLS, INC.
2246 Lindsay Way
Glendora, CA 91740
PHONE: (909) 305-1600
FAX #: (909) 305-1604

LICENSE NO.: 729905
CLASSIFICATION (S): C-7, C10
EXPIRATION DATE: 11/30/2012
RICHARD TAYLOR

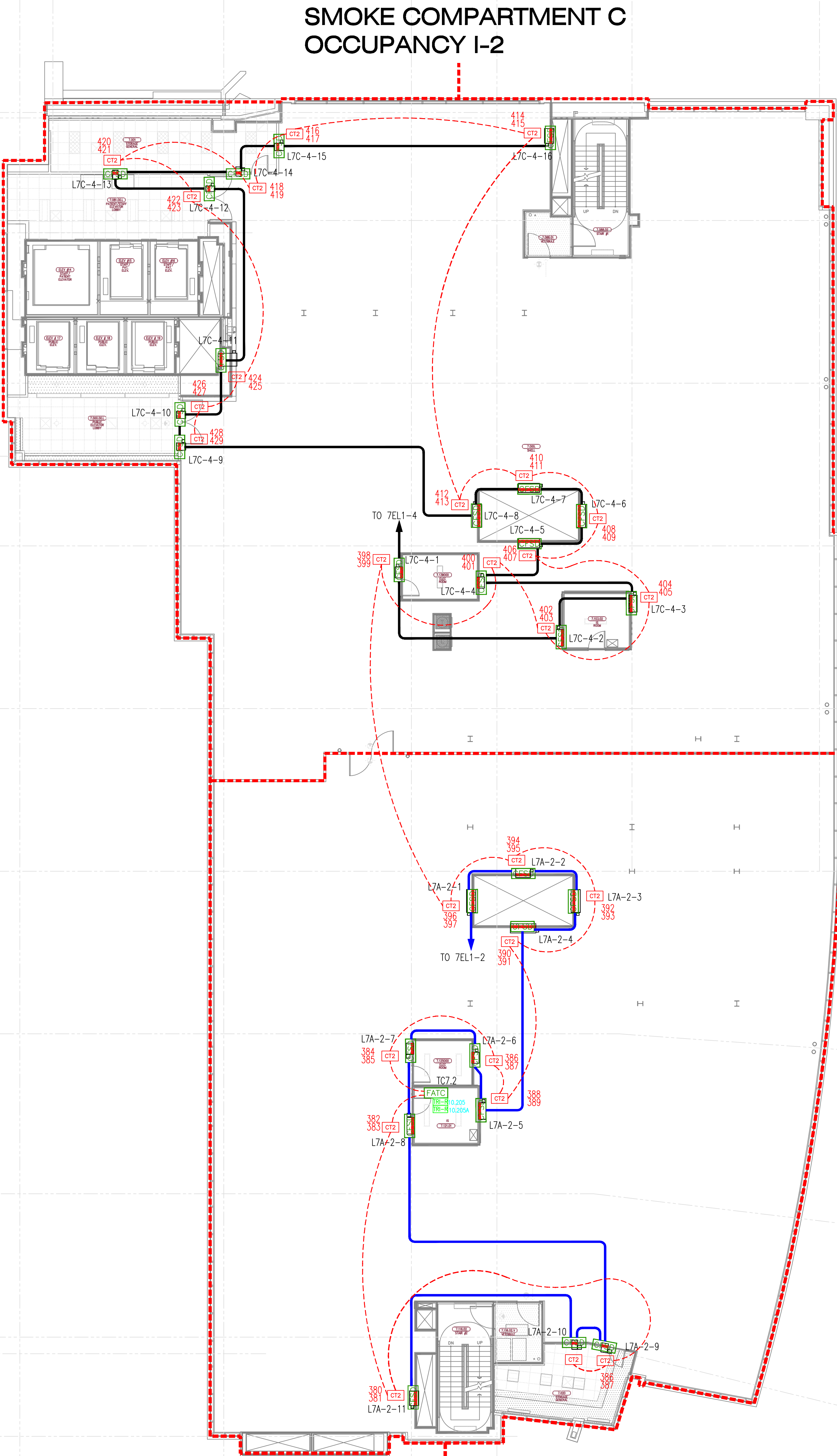
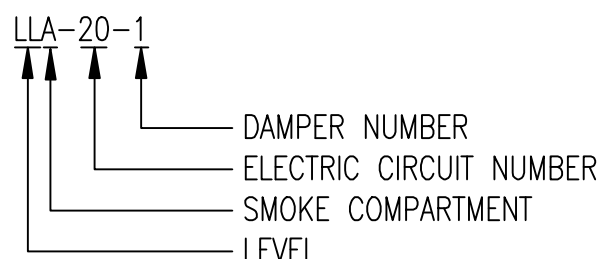


DEVICE LEGEND					
SYMBOL	MODEL	MAKE	DESCRIPTION	CSFM #	MOUNTING
	N/A	BY OTHERS	-FIRE ALARM TERMINAL CABINET	N/A	-INSTALLED BY OTHERS
	SIGA-CT2	EST	-DUAL TRANSPONDER	7300-1657:121	-4" SQ. BOX WITH SINGLE GANG RING
	N/A	BY OTHERS	-FIRE/SMOKE DAMPER	N/A	
	N/A	BY OTHERS	-JUNCTION BOX	N/A	

CONDUIT LEGEND






DAMPER ID



DAMPER MONITORING SYSTEM

CHILDRENS HOSPITAL OF
ORANGE COUNTY - TOWER II
455 SOUTH MAIN STREET
ORANGE, CALIFORNIA 92868-3874

REVISIONS

ISSUED FOR PLANCHECK	03/08/11
 DESIGN REVISION	07/18/11
 DESIGN REVISION	11/22/11
 DESIGN REVISION	11/06/12

**RECORD
DRAWINGS**

THESE DRAWINGS HAVE BEEN PREPARED BY BEC EXCLUSIVELY FOR INSTALLATION BY BEC. BEC ACCEPTS NO LIABILITY FOR CLAIMS BY OTHERS IF BEC IS NOT THE INSTALLER. THESE DRAWINGS ARE INSTRUMENTS OF SERVICE AND ARE THE PROPERTY OF BEC. ALL DESIGNS AND OTHER INFORMATION CONTAINED ON THESE DRAWINGS ARE FOR USE ON THE SPECIFIC PROJECT, INSTALLED ONLY BY BEC, AND SHALL NOT BE REPRODUCED, ALTERED, USED TO OBTAIN PERMITS OR USED TO COMPLETE THIS PROJECT OR ANY OTHER PROJECT, BY OTHERS, WITHOUT FIRST OBTAINING THE EXPRESSED WRITTEN PERMISSION AND CONSENT OF BEC. THESE DRAWINGS SHALL NOT BE ASSIGNED TO A THIRD PARTY WITHOUT WRITTEN PERMISSION AND CONSENT FROM BEC. USE OF THESE DRAWINGS IN ANY SUCH MANNER WITHOUT BEC'S WRITTEN CONSENT SHALL CONSTITUTE TOTAL INDEMNIFICATION OF BEC LIABILITY.



DRAWING DATE:	03/08/11
SCALE:	1/16" = 1'-0"
FILE NAME:	FA0000LDWG
DESIGNED BY:	C.S.
PROJECT MANAGER:	KYLE OBERWIRE
CONTACT NUMBER:	(909) 305-1600

SHEET TITLE

**DAMPER MONITORING
SYSTEM
LEVEL 7**

SHEET No.

FA-07.8

MENT C

SIEMENS

CALIFORNIA STATE CONTRACTORS
LICENSE NO.: #758796 - B/ C10/ C16/ C20

Siemens Building Technologies, Inc.
FIS FIRE/LIFE SAFETY DIVISION

10775 Business Center Drive
Cypress, California 90630 USA

Phone: (714) 761-2200
Fax: (714) 220-4958

This drawing and the information and design application herein contained is the property of SIEMENS BUILDING TECHNOLOGIES, Inc. and is loaned upon the express condition that the same be returned to SIEMENS BUILDING TECHNOLOGIES, Inc. upon request; all information herein contained shall be treated as secret and confidential; no reproduction of this drawing or part thereof shall be made without the written consent of SIEMENS BUILDING TECHNOLOGIES, Incorporated.



BUILDING ELECTRONIC CONTROLS, INC.
2246 Lindsay Way
Glendora, CA 91740
PHONE: (909) 305-1600
FAX #: (909) 305-1604

LICENSE NO.: 729805
CLASSIFICATION: E-7, C-7, C10
EXPIRATION DATE: 11/30/2012
RICHARD TAYLOR



- NOTES:
1. INTERFACE TO PATIENT ROOM BONE LIGHT, BONE LIGHT & POWER SHALL BE FURNISHED AND INSTALLED BY OTHERS.
 2. NOT USED
 3. INTERFACE TO VEN DOOR / ROLL-DOWN DOOR / SHUTTER FOR RELEASE. EQUIPMENT & POWER SHALL BE FURNISHED AND INSTALLED BY OTHERS.
 4. INTERFACE FOR MONITORING STATUS OF EQUIPMENT.
 5. SYNCHRONIZING CONFIGURATION OF ALL PAD PANELS.
 6. (HFD) ACTIVATION & MONITORING / (HFD) MONITORING FOR PAD PANELS.
 7. INTERFACE FOR RELEASE OF MAGNETIC DOOR HOLD OPEN DEVICES.
 8. INTERFACE FOR RELEASE OF COMBINATION SMOKE FIRE DAMPER CIRCUITS (EXCLUDING ISOLATION ROOMS).
 9. INTERFACE FOR ELEVATOR RECALL (PRIMARY)
 10. INTERFACE FOR ELEVATOR RECALL (ALT-RECALL)
 11. INTERFACE FOR ELEVATOR SHUNT TRIP
 12. INTERFACE FOR ELEVATOR SHUNT TRIP (BATTERY)
 13. INTERFACE FOR ELEVATOR CAB LIGHT (STEADY)
 14. INTERFACE FOR ELEVATOR CAB LIGHT (FLASHING)
 15. INTERFACE FOR RELEASE OF COMBINATION SMOKE FIRE DAMPER CIRCUITS FOR ISOLATION ROOMS ONLY.
 16. INTERFACE FOR HVAC SHUTDOWN
 17. INTERFACE FOR MONITORING OF DISCONNECT SWITCH
 18. MONITOR MODULE TO MONITOR ASPIRATING SMOKE DETECTION PANEL.
-FIRE 2
-TROUBLE
 19. CONTROL RELAY (HTRI-2) IS PROVIDED FOR ASPIRATING SMOKE DETECTION PANEL RESET
 20. MONITOR MODULES TO MONITOR PREACTION PANEL
-ALARM
-SUPERVISORY
-TROUBLE
 21. PROVIDE 120V AC, 200 AMP DEDICATED CIRCUIT FOR THE POWER SUPPLY
 22. CONTROL RELAY (HTRI-2) IS PROVIDED FOR DIMMER CONTROLS ACTIVATION

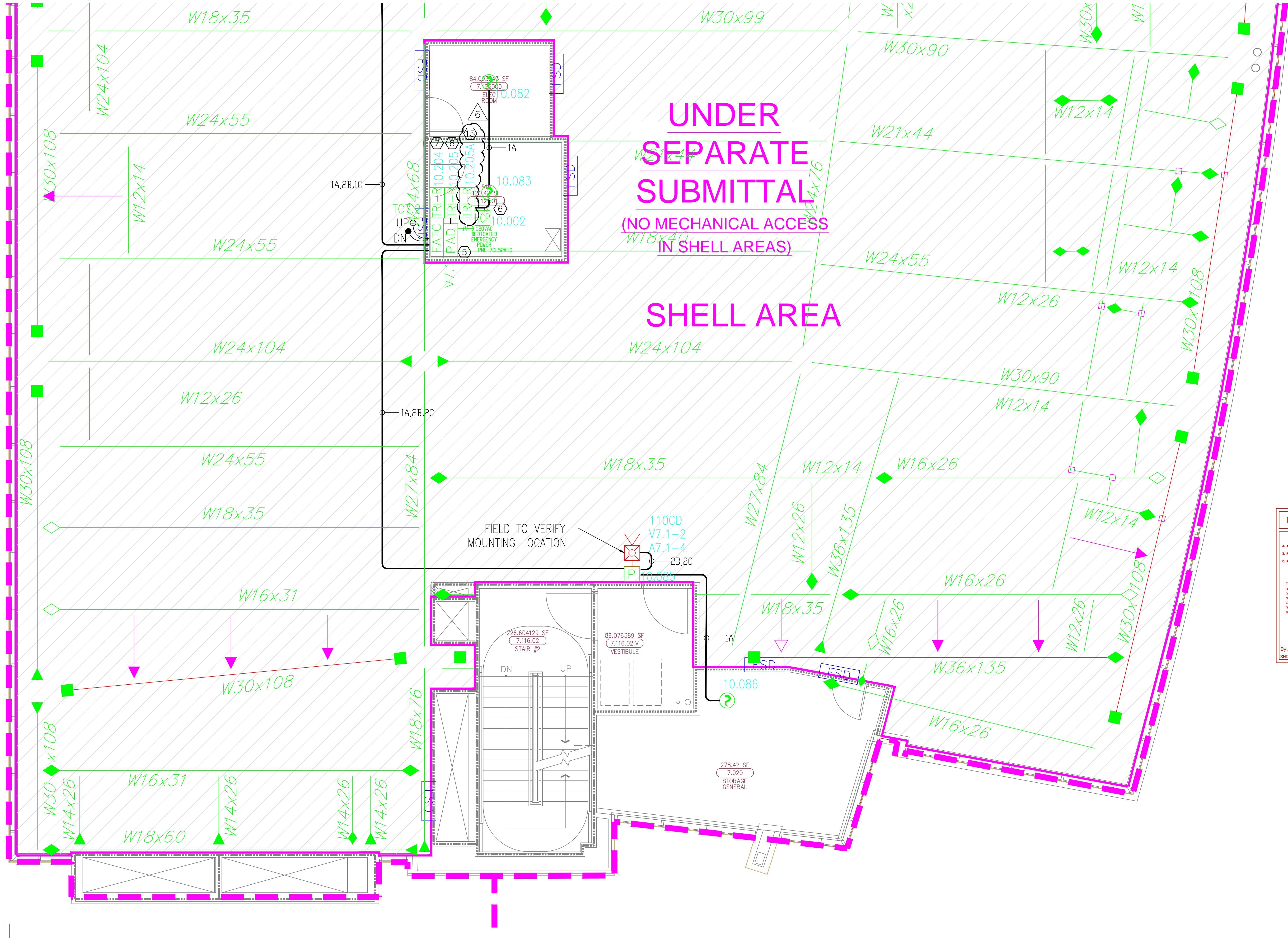
MCCARTHY APPROVAL

A. Approved as noted for architectural Review
B. Review and Rejected
C. Rejected

This review is for general conformance with Plans and Specifications only. Any deviations from same not clearly noted by the Engineer have not been reviewed. Reviewer shall not constitute a complete check of detailed dimensions or notes to verify to release the Engineer of contractual responsibility for any error or deviation from contract requirements.

McCarthy

By: _____ Date: _____
CHOP DRAWING REFERENCE NO. _____



SIEMENS

CALIFORNIA STATE CONTRACTORS
LICENSE NO.: #758796 - B/ C10/ C16/ C20

Siemens Building Technologies, Inc.
FIS FIRE/LIFE SAFETY DIVISION
10775 Business Center Drive
Cypress, California 90630 USA
Phone: (714) 761-2200
Fax: (714) 220-4958

This drawing and the information and design application herein contained is the property of SIEMENS BUILDING TECHNOLOGIES, Inc. and is loaned upon the express condition that the same be returned to SIEMENS BUILDING TECHNOLOGIES, Inc. upon request; all information herein contained shall be treated as secret and confidential; no reproduction of this drawing or part thereof shall be made without the written consent of SIEMENS BUILDING TECHNOLOGIES, Incorporated.



BUILDING ELECTRONIC CONTROLS, INC.
2246 Lindsay Way
Glendora, CA 91740
PHONE: (909) 305-1600
FAX #: (909) 305-1604



LICENSE NO.: 729805
CLASSIFICATION: FS, C-7, C10
EXPIRATION DATE: 11/30/2012
RICHARD TAYLOR

- NOTES:
- INTERFERENCE TO PATIENT ROOM BONE LIGHT, DOME LIGHT & POWER SHALL BE FURNISHED AND INSTALLED BY OTHERS.
 - NOT USED
 - INTERFERENCE TO VEN DOOR / ROLL-DOWN DOOR / SHUTTER FOR RELEASE. EQUIPMENT & POWER SHALL BE FURNISHED AND INSTALLED BY OTHERS.
 - INTERFERENCE FOR MONITORING STATUS OF EQUIPMENT.
 - SYNCHRONIZING CONFIGURATION OF ALL PAD PANELS.
 - KEY ACTIVATION & MONITORING / HIRI-R MONITORING FOR PAD PANELS.
 - INTERFERENCE FOR RELEASE OF MAGNETIC DOOR HOLD OPEN DEVICES.
 - INTERFERENCE FOR RELEASE OF COMBINATION SMOKE FIRE DAMPER CIRCUITS (EXCLUDING ISOLATION ROOMS).
 - INTERFERENCE FOR ELEVATOR RECALL (PRIMARY)
 - INTERFERENCE FOR ELEVATOR RECALL (ALT-RECALL)
 - INTERFERENCE FOR ELEVATOR SHUNT TRIP
 - INTERFERENCE FOR ELEVATOR SHUNT TRIP (BATTERY)
 - INTERFERENCE FOR ELEVATOR CAB LIGHT (STEADY)
 - INTERFERENCE FOR ELEVATOR CAB LIGHT (FLASHING)
 - INTERFERENCE FOR RELEASE OF COMBINATION SMOKE FIRE DAMPER CIRCUITS FOR ISOLATION ROOMS ONLY.
 - INTERFERENCE FOR HVAC SHUTDOWN
 - INTERFERENCE FOR MONITORING OF DISCONNECT SWITCH
 - MONITOR MODULE TO MONITOR ASPIRATING SMOKE DETECTION PANEL.
-FIRE 2
-FIRE 1
-TROUBLE
 - CONTROL RELAY (HIRI-R) IS PROVIDED FOR ASPIRATING SMOKE DETECTION PANEL RESET
 - MONITOR MODULES TO MONITOR PREACTION PANEL
-ALARM
-SUPERVISORY
-TROUBLE
 - PROVIDE 120V AC, 20A AMP'S DEDICATED CIRCUIT FOR THE POWER SUPPLY
 - CONTROL RELAY (HIRI-R) IS PROVIDED FOR DIMMER CONTROLS ACTIVATION

☐ MXL ☐ VOICE ☐ XL3 ☐ SYSTEM3
☒ XLS ☐ FS-250 ☐ EST3 ☐ OTHER

OSHPD NO. #: IL-072072-30

Rev No.	Date	Remarks	Initial
1	07/20/12	DESIGN REVISION	
2	11/27/11	DESIGN REVISION	
3	07/21/11	DESIGN REVISION	
4	05/02/11	FULLERTON FIRE DEPARTMENT CORRECTIONS	
5	11/30/10	DISPATCH CENTER CORRECTIONS	LF
6	07/30/10	DISPATCH CENTER CORRECTIONS	LF
7	11/05/09	BACKGROUND REVISIONS	FM

Rev No. Date Remarks Initial

Drawn: H.JEANG

Checked: -

Approved: -

Date: 07.30.09

Scale: 0'-1/4" = 1'-0"

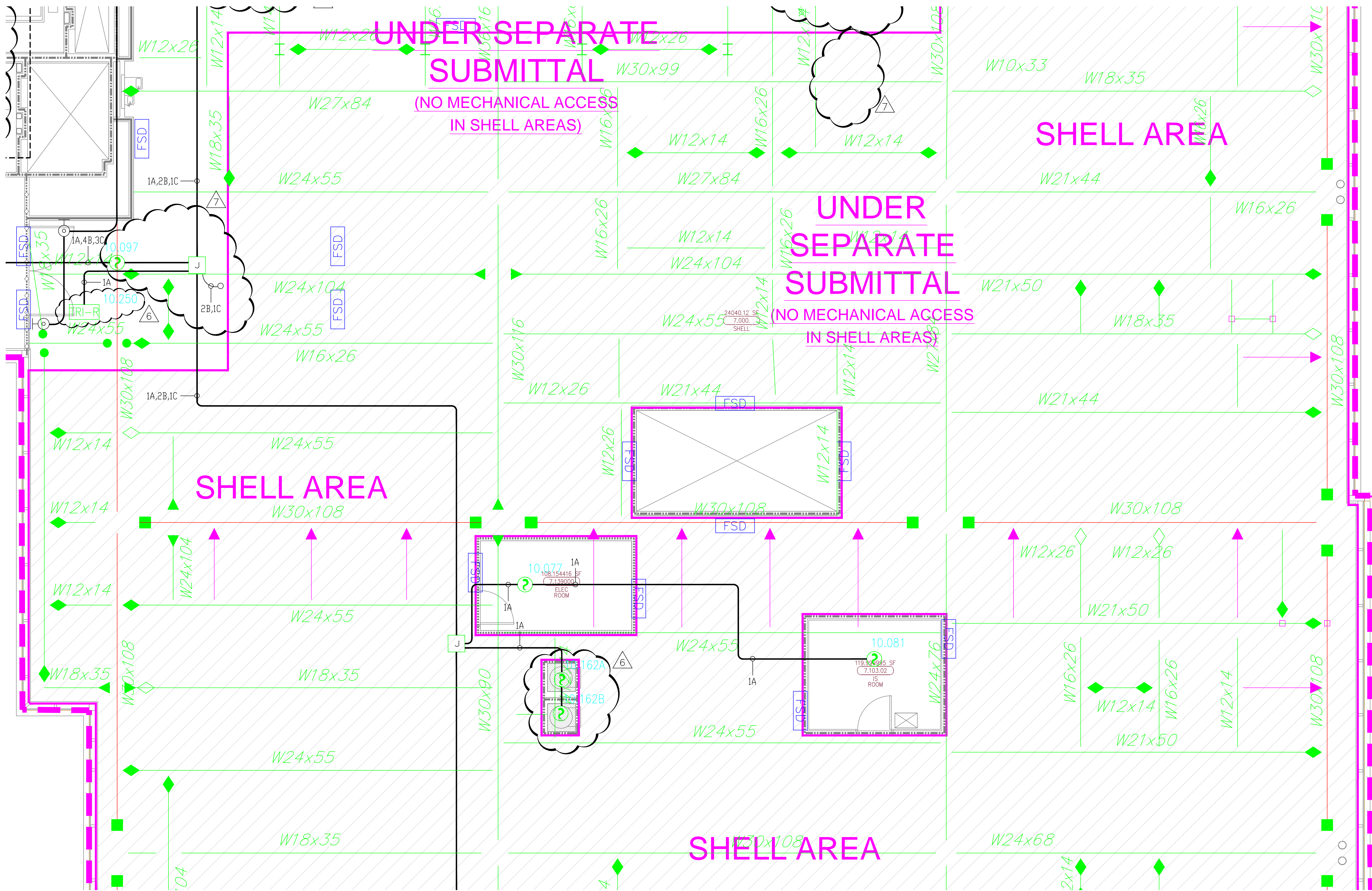
Job Number: 440P-056306

Project: CHILDRENS HOSPITAL OF ORANGE COUNTY - TOWER II

455 SOUTH MAIN STREET

ORANGE, CALIFORNIA 92868-3874

Drawing Number: EF3.7G

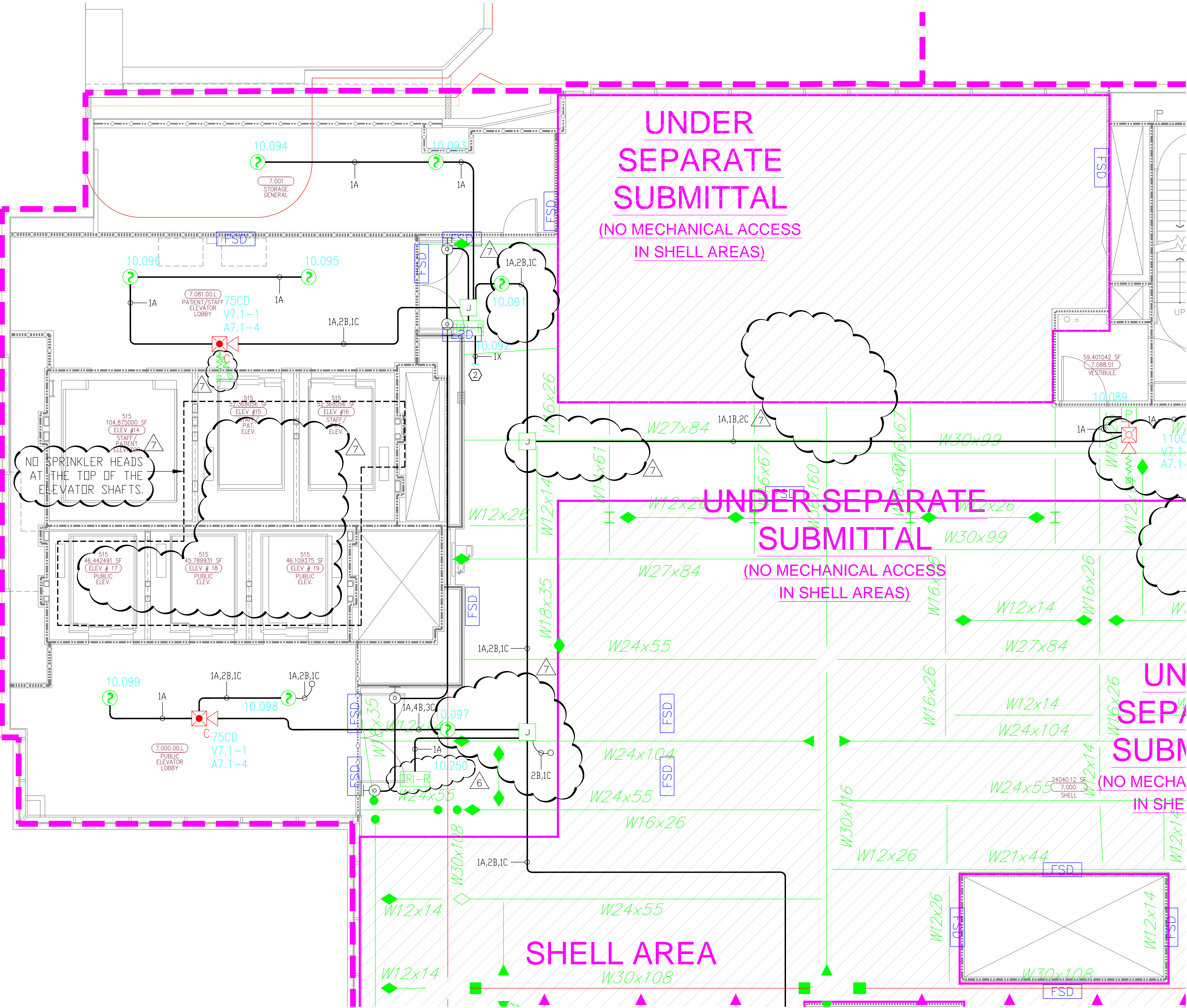


1) ALL RACEWAY RUNS INDICATED WITHIN THIS DRAWING PACKAGE ARE SHOWN DIAGRAMMATICALLY AND ARE FOR CIRCUITING PURPOSES ONLY. ALL RUNS SHOWN SHOULD NOT SERVE IN ANY WAY AS AN ACTUAL ROUTING GUIDE FOR INSTALLATION OF RACEWAYS. EXACT INSTALL LOCATION SHALL BE FIELD DETERMINED.

2) ADDITIONAL JUNCTION BOXES NOT SHOWN WITHIN THESE PLANS MAY BE REQUIRED TO ACCOMMODATE PROPER RACEWAY INSTALLATIONS & SIZING. IT IS THE ELECTRICAL CONTRACTORS RESPONSIBILITY TO DETERMINE THE NECESSARY AMOUNT OF JUNCTION BOXES/EXTENSION RINGS REQUIRED. ALL INSTALLATION MATERIAL, SUCH AS CONDUIT FITTING, BOXES, AND HANGERS, ETC. NOT SUPPLIED BY SIEMENS.

3) AS FIELD CONDITIONS DICTATE ACTUAL RACEWAY INSTALLATIONS, DEVICE BACK BOXES & JUNCTION BOXES SHALL BE SIZED PER FIELD INSTALLING CONDITIONS. DEVICE BACK BOX SIZES INDICATED WITHIN THIS DRAWING PACKAGE ARE MINIMUM REQUIREMENTS ONLY. AN INCREASE IN BACK BOX DEPTH, ADDITION OF EXTENSION BOX/RING, ETC. MAY BE REQUIRED IN ORDER TO PROPERLY ACCOMMODATE FOR WIRE QUANTITIES INSTALLED WITHIN THE RACEWAY.

4) THE INSTALLATION OF DEVICE BACKBOXES & WIRE SHALL BE SIZED AND INSTALLED PER CEC. IN ADDITION SUCH BOXES & WIRE SHALL BE INSTALLED IN A MANNER AS TO ALLOW FOR THE EASE OF DEVICE INSTALLATION. THE INSTALLATION OF DEVICES WHICH REQUIRE EXCESSIVE FORCE, THE PINCHING OF WIRES, RESULT IN GROUND FAULTS, ETC. IN ORDER TO PROPERLY SEAT THE DEVICE TO IT'S FINISHED SURFACE SHALL BE CONSIDERED UNACCEPTABLE AND A NON-SIEMENS INSTALLATION STANDARD.



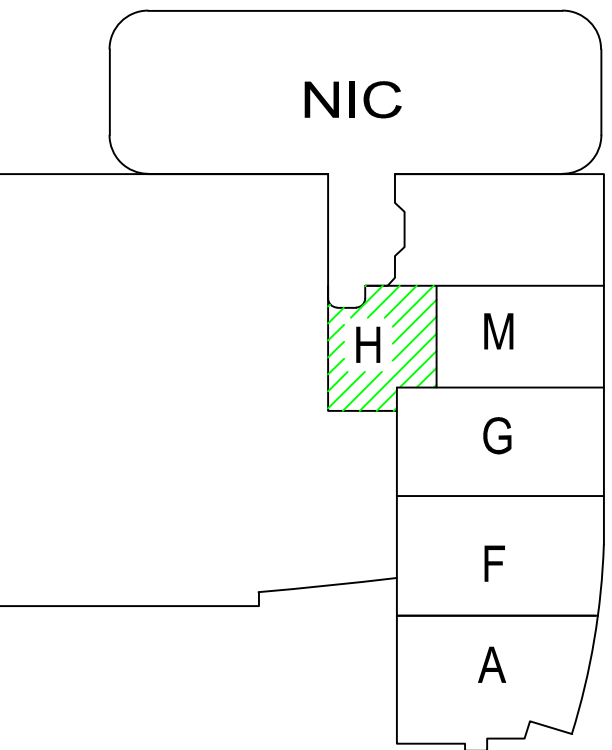
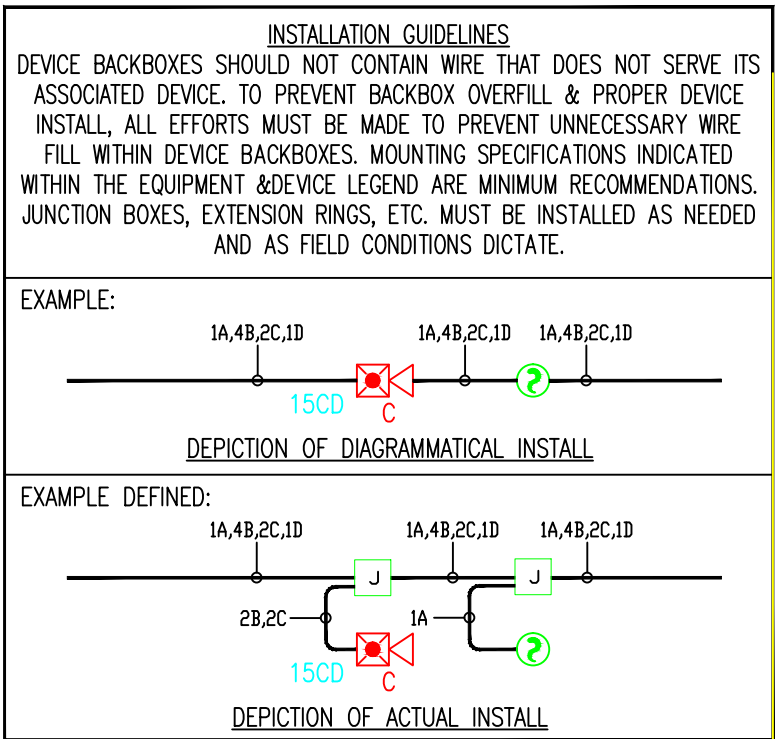
MCCARTHY APPROVAL

A. Approved as noted for architectural Review
B. Review and Reinstall
C. Reinstall

This review is for general conformance with Plans and Specifications only. Any deviations from same not clearly noted by the Inspector have not been reviewed. Reviewer shall not constitute a complete check of installed dimensions or count to verify to release the Installer of contractual responsibility for any error or deviation from contract requirements.

McCarthy

By _____ On _____
CHIEF, DRAWING REFERENCE NO. _____



SIEMENS

CALIFORNIA STATE CONTRACTORS
LICENSE NO.: #758796 - B/ C10/ C16/ C20

Siemens Building Technologies, Inc.
FIS FIRE/LIFE SAFETY DIVISION

10775 Business Center Drive
Cypress, California 90630 USA

Phone: (714) 761-2200
Fax: (714) 220-4956

This drawing and the information and design application herein contained is the property of SIEMENS BUILDING TECHNOLOGIES, Inc. and is loaned upon the express condition that the same be returned to SIEMENS BUILDING TECHNOLOGIES, Inc. upon request; all information herein contained shall be treated as secret and confidential; no reproduction of this drawing or part thereof shall be made without the written consent of SIEMENS BUILDING TECHNOLOGIES, Incorporated.

BEC

Building Electronic Controls, Inc.

BUILDING ELECTRONIC CONTROLS, INC.
2246 Lindsay Way
Glendora, CA 91740
PHONE: (909) 305-1600
FAX #: (909) 305-1604

LICENSE NO.: 729805
CLASSIFICATION: E5, C-7, C10
EXPIRATION DATE: 11/30/2012
RICHARD TAYLOR

NOTES:

- ① INTERFACE TO PATIENT ROOM DOOR LIGHT. DOOR LIGHT & POWER SHALL BE FURNISHED AND INSTALLED BY OTHERS.
- ② NOT USED
- ③ INTERFACE TO VEN DOOR / ROLL-DOWN DOOR / SHUTTER FOR RELEASE. EQUIPMENT & POWER SHALL BE FURNISHED AND INSTALLED BY OTHERS.
- ④ INTERFACE FOR MONITORING STATUS OF EQUIPMENT.
- ⑤ SYNCHRONIZING CONFIGURATION OF ALL PAD PANELS.
- ⑥ KEY ACTIVATION & MONITORING / KTR-RS MONITORING FOR PAD PANELS.
- ⑦ INTERFACE FOR RELEASE OF MAGNETIC DOOR HOLD OPEN DEVICES.
- ⑧ INTERFACE FOR RELEASE OF COMBINATION SMOKE FIRE DAMPER CIRCUITS (EXCLUDING ISOLATION ROOMS).
- ⑨ INTERFACE FOR ELEVATOR RECALL (PRIMARY)
- ⑩ INTERFACE FOR ELEVATOR RECALL (ALT-RECALL)
- ⑪ INTERFACE FOR ELEVATOR SHUNT TRIP
- ⑫ INTERFACE FOR ELEVATOR SHUNT TRIP (BATTERY)
- ⑬ INTERFACE FOR ELEVATOR CAB LIGHT (STEADY)
- ⑭ INTERFACE FOR ELEVATOR CAB LIGHT (FLASHING)
- ⑮ INTERFACE FOR RELEASE OF COMBINATION SMOKE FIRE DAMPER CIRCUITS FOR ISOLATION ROOMS ONLY.
- ⑯ INTERFACE FOR HVAC SHUTDOWN
- ⑰ INTERFACE FOR MONITORING OF DISCONNECT SWITCH
- ⑱ MONITOR MODULE TO MONITOR ASPIRATING SMOKE DETECTION PANEL.
- ⑲ PRE-ALARM FIRE 2 - TROUBLE
- ⑳ CONTROL RELAY (KTR-R) IS PROVIDED FOR ASPIRATING SMOKE DETECTION PANEL RESET
- ㉑ MONITOR MODULES TO MONITOR PREACTION PANEL
- ㉒ ALARM SUPERVISORY TROUBLE
- ㉓ PROVIDE 120V AC, 20 AMP DEDICATED CIRCUIT FOR THE POWER SUPPLY
- ㉔ CONTROL RELAY (KTR-R) IS PROVIDED FOR DIMMER CONTROLS ACTIVATION

<input type="checkbox"/> MXL	<input type="checkbox"/> VOICE	<input type="checkbox"/> XL3	<input type="checkbox"/> SYSTEM3
<input checked="" type="checkbox"/> XLS	<input type="checkbox"/> FS-250	<input type="checkbox"/> EST3	<input type="checkbox"/> OTHER

OSHPD NO. #: IL-072072-30

07/20/12	DESIGN REVISION	1
11/27/11	DESIGN REVISION	2
07/21/11	DESIGN REVISION	3
05/02/11	FULLERTON FIRE DEPARTMENT CORRECTIONS	4
11/30/10	DISPATCH CENTER CORRECTIONS	5
07/30/10	DISPATCH CENTER CORRECTIONS	6
11/05/09	BACKGROUND REVISIONS	7

Rev No.	Date	Remarks	Initial
Drawn	H,JEANG		
Checked	-		
Approved	-		
Date:	07.30.09		
Scale:	0'-1/4" = 1'-0"		

FIRE ALARM FLOORPLAN
LEVEL 7 - AREA H

Job Number: 440P-056306

Project: CHILDRENS HOSPITAL OF ORANGE COUNTY - TOWER II
455 SOUTH MAIN STREET
ORANGE, CALIFORNIA 92868-3874

Drawing Number: EF3.7H

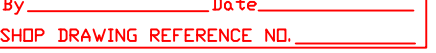
Phone: (714) 761-2200
Fax: (714) 220-4958

is drawing and the information and design application herein contained is the property of SIEMENS BUILDING TECHNOLOGIES, Inc. and is loaned upon the express condition that the same be returned to SIEMENS BUILDING TECHNOLOGIES, Inc. upon request; all information herein contained shall be treated as secret and confidential; no production of this drawing or part thereof shall be made without the written consent of SIEMENS BUILDING TECHNOLOGIES, Incorporated.



OSHPD NO.#: IL-072072-30

FF3 7M



RAY RUNS INDICATED WITHIN THIS DRAWING PACKAGE AND



1.) ALL RACEWAY RUNS INDICATED WITHIN THIS DRAWING PACKAGE ARE SHOWN DIAGRAMMATICALLY, AND ARE FOR CIRCUITING PURPOSES ONLY. ALL RUNS SHOWN SHOULD NOT SERVE IN ANY WAY AS AN ACTUAL ROUTING GUIDE FOR INSTALLATION OF RACEWAYS. EXACT INSTALL LOCATION SHALL BE FIELD DETERMINED.