

SIEMENS

CALIFORNIA STATE CONTRACTORS
LICENSE NO.: #758796 - B/ C10/ C16/ C20

Siemens Building Technologies, Inc.
FIS FIRE/LIFE SAFETY DIVISION
10775 Business Center Drive
Cypress, California 90630 USA
Phone: (714) 761-2200
Fax: (714) 220-4958

This drawing and the information and design application herein contained is the property of SIEMENS BUILDING TECHNOLOGIES, Inc. and is loaned upon the express condition that the same be returned to SIEMENS BUILDING TECHNOLOGIES, Inc. upon request; all information herein contained shall be treated as secret and confidential; no reproduction of this drawing or part thereof shall be made without the written consent of SIEMENS BUILDING TECHNOLOGIES, Incorporated.

BEC
Building Electronic Controls, Inc.

BUILDING ELECTRONIC CONTROLS, INC.
2248 Lindsay Way
Glendora, CA 91740
PHONE: (909) 305-1600
FAX #: (909) 305-1604
LICENSE NO.: 729805
CLASSIFICATION: C-7 C10
EXPIRATION DATE: 11/30/2012
RICHARD TAYLOR



- NOTES:
- ① INTERFACE TO PATIENT ROOM DOME LIGHT, DOME LIGHT & POWER SHALL BE FURNISHED AND INSTALLED BY OTHERS.
 - ② NOT USED
 - ③ INTERFACE TO VEN DOOR / ROLL-DOWN DOOR / SHUTTER FOR RELEASE. EQUIPMENT & POWER SHALL BE FURNISHED AND INSTALLED BY OTHERS.
 - ④ INTERFACE FOR MONITORING STATUS OF EQUIPMENT.
 - ⑤ SYNCHRONIZING CONFIGURATION OF ALL PAD PANELS.
 - ⑥ GFI/ACTIVATION & MONITORING / GFI/RS MONITORING FOR PAD PANELS.
 - ⑦ INTERFACE FOR RELEASE OF MAGNETIC DOOR HOLD OPEN DEVICES.
 - ⑧ INTERFACE FOR RELEASE OF COMBINATION SMOKE FIRE DAMPER CIRCUITS (EXCLUDING ISOLATION ROOMS).
 - ⑨ INTERFACE FOR ELEVATOR RECALL (PRIMARY)
 - ⑩ INTERFACE FOR ELEVATOR RECALL (ALT-RECALL)
 - ⑪ INTERFACE FOR ELEVATOR SHUNT TRIP
 - ⑫ INTERFACE FOR ELEVATOR SHUNT TRIP (BATTERY)
 - ⑬ INTERFACE FOR ELEVATOR CAB LIGHT (STEADY)
 - ⑭ INTERFACE FOR ELEVATOR CAB LIGHT (FLASHING)
 - ⑮ INTERFACE FOR RELEASE OF COMBINATION SMOKE FIRE DAMPER CIRCUITS FOR ISOLATION ROOMS ONLY.
 - ⑯ INTERFACE FOR HVAC SHUTDOWN
 - ⑰ INTERFACE FOR MONITORING OF DISCONNECT SWITCH
 - ⑱ MONITOR MODULE TO MONITOR ASPIRATING SMOKE DETECTION PANEL.
-FIRE &
-TROUBLE
 - ⑲ CONTROL RELAY (HTRI-R) IS PROVIDED FOR ASPIRATING SMOKE DETECTION PANEL RESET
 - ⑳ MONITOR MODULES TO MONITOR PREACTION PANEL
-ALARM
-TROUBLE
-SUPERVISORY
 - ㉑ PROVIDE 120V AC, 200 AMPS DEDICATED CIRCUIT FOR THE POWER SUPPLY
 - ㉒ CONTROL RELAY (HTRI-R) IS PROVIDED FOR DIMMER CONTROLS ACTIVATION

MCCARTHY APPROVAL

A. Approved as noted for Architectural Review
B. Review and Rejected
C. Rejected

This review is for general conformance with Plans and Specifications only. Any deviations from same not clearly noted by the Engineer have not been reviewed. Reviewer shall not constitute a complete check of detailed dimensions or notes to verify to release the Engineer of contractual responsibility for any error or deviation from contract requirements.

McCarthy

By: _____ Date: _____
CHOP DRAWING REFERENCE NO. _____

MXL VOICE XL3 SYSTEMS
XLS FS-250 EST3 OTHER

OSHPD NO. #: IL-072072-30

Rev No.	Date	Remarks	Initial
1	07/20/12	DESIGN REVISION	
2	11/21/11	DESIGN REVISION	
3	07/21/11	DESIGN REVISION	
4	05/02/11	FULLERTON FIRE DEPARTMENT CORRECTIONS	
5	11/30/10	DISPATCH CENTER CORRECTIONS	
6	07/30/10	DISPATCH CENTER CORRECTIONS	
7	11/05/09	BACKGROUND REVISIONS	

Rev No. Date Remarks Initial

Drawn: H.JEANG

Checked: -

Approved: -

Date: 07.30.09

Scale: 0'-1/16" = 1'-0"

FIRE ALARM FLOORPLAN
LOWER LEVEL - COMPOSITE

Job Number: 440P-056306

Project: CHILDRENS HOSPITAL OF
ORANGE COUNTY - TOWER II
455 SOUTH MAIN STREET
ORANGE, CALIFORNIA 92668-3874

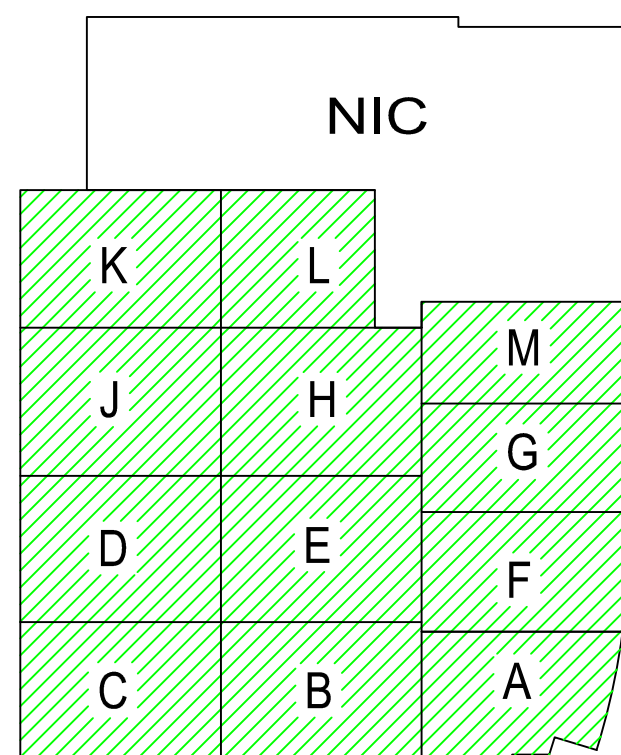
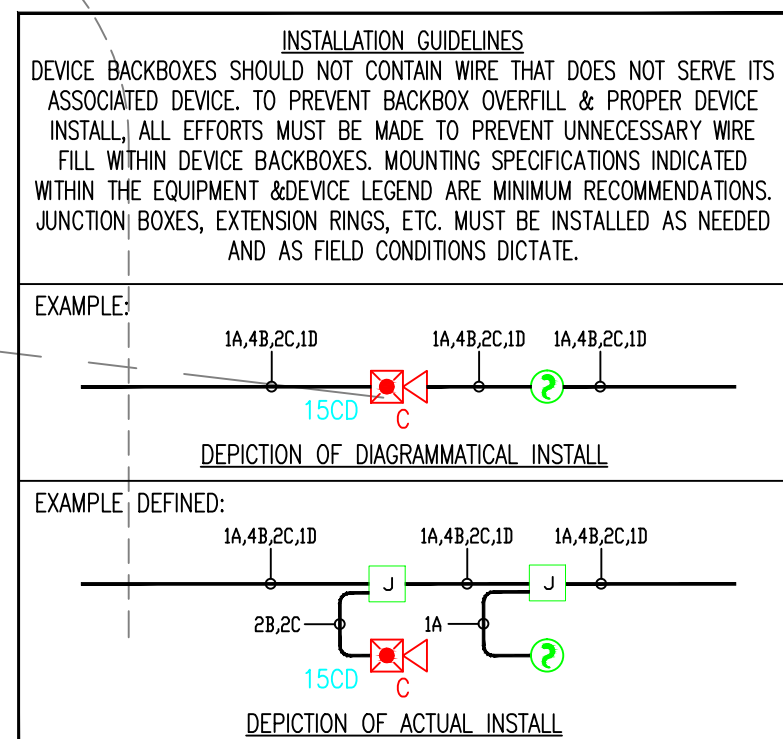
Drawing Number: EF1.00

SMOKE COMPARTMENT D

SMOKE COMPARTMENT C

SMOKE COMPARTMENT B

SMOKE COMPARTMENT A



Key Plan
N.T.S.

NORTH



4) AS FIELD CONDITIONS DICTATE ACTUAL RACEWAY INSTALLATIONS, DEVICE BACK BOXES AND JUNCTION BOXES SHALL BE SIZED PER FIELD INSTALLING CONDITIONS. DEVICE BACK BOX SIZES INDICATED WITHIN THIS DRAWING PACKAGE ARE MINIMUM REQUIREMENTS ONLY. AN INCREASE IN BACK BOX DEPTH, ADDITION OF EXTENSION BOX/RING, ETC. MAY BE REQUIRED IN ORDER TO PROPERLY ACCOMMODATE FOR WIRE QUANTITIES INSTALLED WITHIN THE RACEWAY.

3) THE INSTALLATION OF DEVICE BACKBOXES & WIRE SHALL BE SIZED AND INSTALLED PER CEC. IN ADDITION SUCH BOXES & WIRE SHALL BE INSTALLED IN A MANNER AS TO ALLOW FOR THE EASE OF DEVICE INSTALLATION. THE INSTALLATION OF DEVICES WHICH REQUIRE EXCESSIVE FORCE, THE PINCHING OF WIRES, RESULTING IN GROUND FAULTS, ETC. IN ORDER TO PROPERLY SEAT THE DEVICE TO ITS FINISHED SURFACE SHALL BE CONSIDERED UNACCEPTABLE AND A NON-SIEMENS INSTALLATION STANDARD.

2) ADDITIONAL JUNCTION BOXES NOT SHOWN WITHIN THESE PLANS MAY BE REQUIRED TO ACCOMMODATE PROPER RACEWAY INSTALLATIONS & SIZING. IT IS THE ELECTRICAL CONTRACTORS RESPONSIBILITY TO DETERMINE THE NECESSARY AMOUNT OF JUNCTION BOXES/EXTENSION RINGS REQUIRED.

1) ALL RACEWAY RUNS INDICATED WITHIN THIS DRAWING PACKAGE ARE SHOWN DIAGRAMMATICALLY AND ARE FOR CIRCUITING PURPOSES ONLY. ALL RUNS SHOWN SHOULD NOT SERVE IN ANY WAY AS AN ACTUAL ROUTING GUIDE FOR INSTALLATION OF RACEWAYS. EXACT INSTALL LOCATION SHALL BE FIELD DETERMINED.

DAMPER MONITORING SYSTEM

CHILDRENS HOSPITAL OF
ORANGE COUNTY - TOWER II
455 SOUTH MAIN STREET
ORANGE, CALIFORNIA 92868-3874

REVISIONS

ISSUED FOR PLANCHECK	03/08/11
DESIGN REVISION	07/18/11
DESIGN REVISION	11/22/11
DESIGN REVISION	11/06/12

RECORD
DRAWINGS

THESE DRAWINGS HAVE BEEN PREPARED BY BEC EXCLUSIVELY FOR INSTALLATION BY BEC. BEC ACCEPTS NO LIABILITY FOR CLAIMS BY OTHERS IF BEC IS NOT THE INSTALLER. THESE DRAWINGS ARE INSTRUMENTS OF SERVICE AND ARE THE PROPERTY OF BEC. ALL DESIGNS AND OTHER INFORMATION CONTAINED ON THESE DRAWINGS ARE FOR USE ON THE SPECIFIED PROJECT, INSTALLED ONLY BY BEC, AND SHALL NOT BE REPRODUCED, ALTERED, USED TO OBTAIN PERMITS OR USED TO COMPLETE THIS PROJECT OR ANY OTHER PROJECT, BY OTHERS, WITHOUT FIRST OBTAINING THE EXPRESSED WRITTEN PERMISSION AND CONSENT OF BEC. THESE DRAWINGS SHALL NOT BE ASSIGNED TO A THIRD PARTY WITHOUT WRITTEN PERMISSION AND CONSENT FROM BEC. USE OF THESE DRAWINGS IN ANY SUCH MANNER WITHOUT BEC'S WRITTEN CONSENT SHALL CONSTITUTE TOTAL INDEMNIFICATION OF BEC LIABILITY.

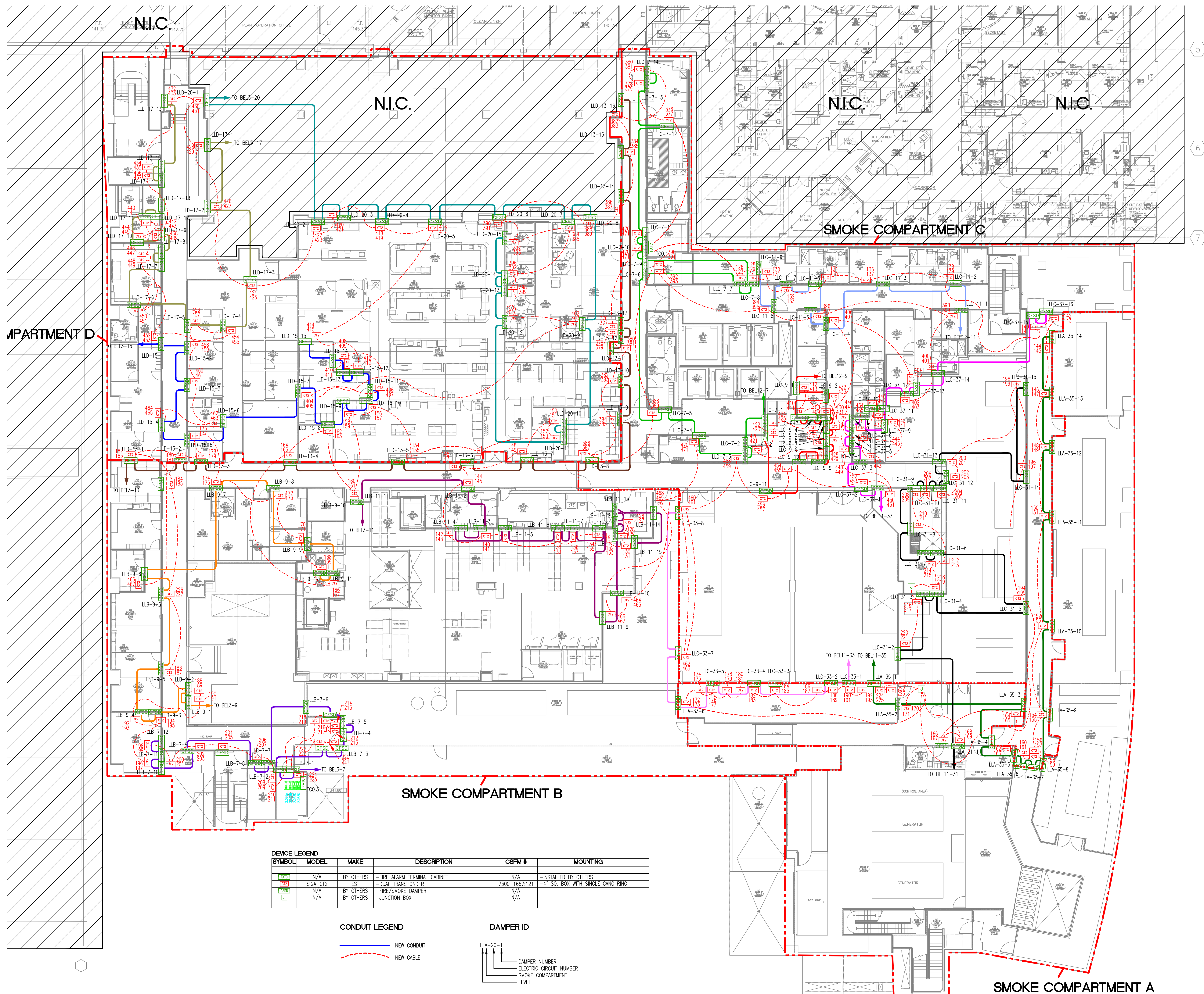


DRAWING DATE: 03/08/11
 SCALE: 1/16" = 1'-0"
 FILE NAME: FA0000LDWG
 DESIGNED BY: C.S.
 PROJECT MANAGER: KYLE OBERWIRE
 CONTACT NUMBER: (909) 305-1600

SHEET TITLE

DAMPER MONITORING
SYSTEM
LOWER LEVEL
SHEET No.

FA-00.1



SYMBOL	MODEL	MAKE	DESCRIPTION	CSFM #	MOUNTING
[CAB]	N/A	BY OTHERS	-FIRE ALARM TERMINAL CABINET	N/A	-INSTALLED BY OTHERS
[CST]	SQA-C12	EST	-DUAL TRANSDUCER	7300-1857:121	-4" SQ. BOX WITH SINGLE GANG RING
[CSD]	N/A	BY OTHERS	-FIRE SMOKE DAMPER	N/A	
[J]	N/A	BY OTHERS	-JUNCTION BOX	N/A	

CONDUIT LEGEND

NEW CONDUIT
 NEW CABLE

DAMPER ID

DAMPER NUMBER
 ELECTRIC CIRCUIT NUMBER
 SMOKE COMPARTMENT
 LEVEL

INTERFERENCE TO PATIENT ROOM DOME LIGHT, DOME LIGHT & POWER SHALL BE FURNISHED AND INSTALLED BY OTHERS.

NOT USED.

INTERFERENCE TO VEN DOOR / ROLL-DOWN DOOR / SHUTTER FOR RELEASE EQUIPMENT & POWER SHALL BE FURNISHED AND INSTALLED BY OTHERS.

INTERFERENCE FOR MONITORING STATUS OF EQUIPMENT.

SYNCHRONIZING CONFIGURATION OF ALL PAD PANELS.

(CCK) ACTIVATION & MONITORING / (GTRI-) MONITORING FOR PAD PANELS.

INTERFERENCE FOR RELEASE OF MAGNETIC DOOR HOLD OPEN DEVICES.

INTERFERENCE FOR RELEASE OF COMBINATION SMOKE FIRE DAMPER CIRCUITS EXCLUDING ISOLATION ROOMS.

INTERFERENCE FOR ELEVATOR RECALL (PRIMARY)

INTERFERENCE FOR ELEVATOR RECALL (ALT-RECALL)

INTERFERENCE FOR ELEVATOR SHUNT TRIP

INTERFERENCE FOR ELEVATOR SHUNT TRIP (BATTERY)

INTERFERENCE FOR ELEVATOR CAB LIGHT (STEADY)

INTERFERENCE FOR ELEVATOR CAB LIGHT (FLASHING)

INTERFERENCE FOR RELEASE OF COMBINATION SMOKE FIRE DAMPER CIRCUITS FOR ISOLATION ROOMS ONLY.

INTERFERENCE FOR HVAC SHUTDOWN

INTERFERENCE FOR MONITORING OF DISCONNECT SWITCH

MONITOR MODULE TO MONITOR ASPIRATING SMOKE DETECTION PANEL.

-FIRE-ALARM -FIRE 2
-FIRE 1 -TROUBLE

CONTROL, RELAY (GTRI-RO) IS PROVIDED FOR ASPIRATING SMOKE DETECTION PANEL RESET.

MONITOR MODULES TO MONITOR PREACTION PANEL.

-ALARM
-SUPERVISORY
-TROUBLE

PROVIDE 120V AC, 200 AMP'S DEDICATED CIRCUIT FOR THE POWER SUPPLY.

CONTROL, RELAY (GTRI-RO) IS PROVIDED FOR DIMMER CONTROLS ACTIVATION.

INSTALLATION GUIDELINES

DEVICE BACKBOXES SHOULD NOT CONTAIN WIRE THAT DOES NOT SERVE ITS ASSOCIATED DEVICE. TO PREVENT BACKBOX OVERFILL & PROPER DEVICE INSTALL, ALL EFFORTS MUST BE MADE TO PREVENT UNNECESSARY WIRE FILL WITHIN DEVICE BACKBOXES. MOUNTING SPECIFICATIONS INDICATED WITHIN THE EQUIPMENT AND/OR LEGEND ARE MINIMUM RECOMMENDATIONS. JUNCTION BOXES, EXTENSION RINGS, ETC. MUST BE INSTALLED AS NEEDED AND AS FIELD CONDITIONS DICTATE.

EXAMPLE:

DEPICTION OF DIAGNOSTICAL INSTALL

EXAMPLE DEFINED:

DEPICTION OF ACTUAL INSTALL

Key Plan

NORTH



1.) ALL RACEWAY RUNS INDICATED WITHIN THIS DRAWING PACKAGE ARE SHOWN DIAGRAMMATICALLY AND ARE FOR CIRCUITING PURPOSES ONLY. ALL RUNS SHOWN SHOULD NOT SERVE IN ANY WAY AS AN ACTUAL ROUTING GUIDE FOR INSTALLATION OF RACEWAYS. EXACT INSTALL LOCATION SHALL BE FIELD DETERMINED.

- NOTES:
- ① INTERFACE TO PATIENT ROOM DOME LIGHT, DOME LIGHT & POWER SHALL BE FURNISHED AND INSTALLED BY OTHERS.
 - ② NOT USED
 - ③ INTERFACE TO VEN DOOR / ROLL-DOWN DOOR / SHUTTER FOR RELEASE. EQUIPMENT & POWER SHALL BE FURNISHED AND INSTALLED BY OTHERS.
 - ④ INTERFACE FOR MONITORING STATUS OF EQUIPMENT.
 - ⑤ SYNCHRONIZING CONFIGURATION OF ALL PAD PANELS.
 - ⑥ GEPY ACTIVATION & MONITORING / GTRI-S MONITORING FOR PAD PANELS.
 - ⑦ INTERFACE FOR RELEASE OF MAGNETIC DOOR HOLD OPEN DEVICES.
 - ⑧ INTERFACE FOR RELEASE OF COMBINATION SMOKE FIRE DAMPER CIRCUITS (EXCLUDING ISOLATION ROOMS).
 - ⑨ INTERFACE FOR ELEVATOR RECALL (PRIMARY)
 - ⑩ INTERFACE FOR ELEVATOR RECALL (ALT-RECALL)
 - ⑪ INTERFACE FOR ELEVATOR SHUNT TRIP
 - ⑫ INTERFACE FOR ELEVATOR SHUNT TRIP (BATTERY)
 - ⑬ INTERFACE FOR ELEVATOR CAB LIGHT (STEADY)
 - ⑭ INTERFACE FOR ELEVATOR CAB LIGHT (FLASHING)
 - ⑮ INTERFACE FOR RELEASE OF COMBINATION SMOKE FIRE DAMPER CIRCUITS FOR ISOLATION ROOMS ONLY.
 - ⑯ INTERFACE FOR HVAC SHUTDOWN
 - ⑰ INTERFACE FOR MONITORING OF DISCONNECT SWITCH
 - ⑱ MONITOR MODULE TO MONITOR ASPIRATING SMOKE DETECTION PANEL.
-FIRE 2
-FIRE 1
-TROUBLE
 - ⑲ CONTROL RELAY (GTRI-R) IS PROVIDED FOR ASPIRATING SMOKE DETECTION PANEL RESET
 - ⑳ MONITOR MODULES TO MONITOR PREACTION PANEL
-ALARM
-SUPERVISORY
-TROUBLE
 - ㉑ PROVIDE 120V AC, 200 AMPS DEDICATED CIRCUIT FOR THE POWER SUPPLY
 - ㉒ CONTROL RELAY (GTRI-R) IS PROVIDED FOR DIMMER CONTROLS ACTIVATION

- ☐ MXL ☐ VOICE ☐ XL3 ☐ SYSTEM3
☒ XLS ☐ FS-250 ☐ EST3 ☐ OTHER

OSHPD NO. #: IL-072072-30

Δ	07/20/12	DESIGN REVISION	-
Δ	11/21/11	DESIGN REVISION	-
Δ	07/21/11	DESIGN REVISION	-
Δ	05/02/11	FULLERTON FIRE DEPARTMENT CORRECTIONS	-
Δ	11/30/10	DISPATCH UNIT	LF
Δ	07/30/10	DISPATCH UNIT	LF
Δ	11/05/09	BACKGROUND REVISIONS	FM

Rev No. Date Remarks Initial

Drawn: H.JEANG

Checked: -

Approved: -

Date: 07.30.09

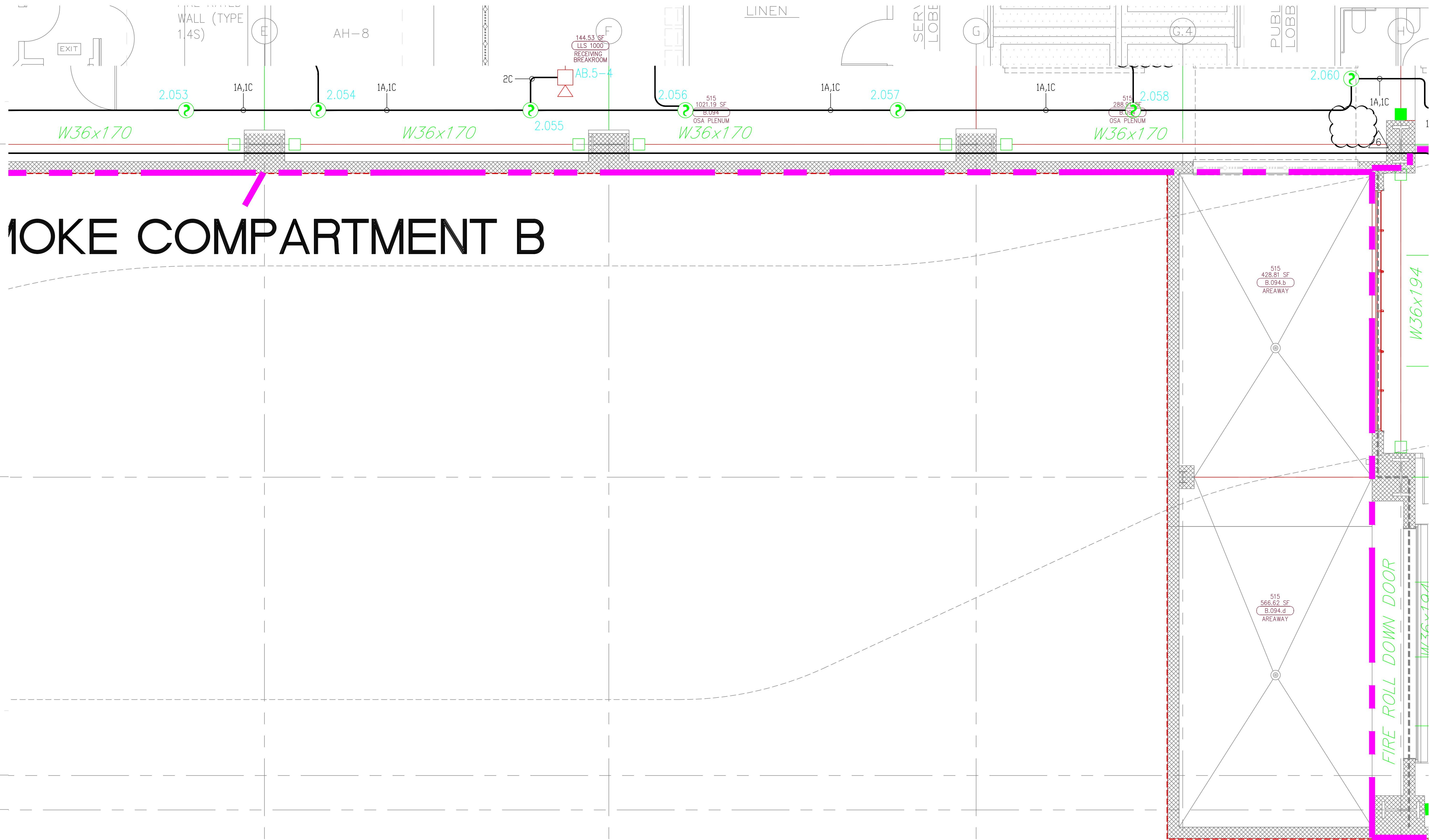
Scale: 0'-1/4" = 1'-0"

FIRE ALARM FLOORPLAN
LOWER LEVEL - AREA B

Job Number: 440P-056306

Project: CHILDRENS HOSPITAL OF
ORANGE COUNTY - TOWER II
455 SOUTH MAIN STREET
ORANGE, CALIFORNIA 92668-3874

Drawing Number: EF3.0B



DOKE COMPARTMENT B

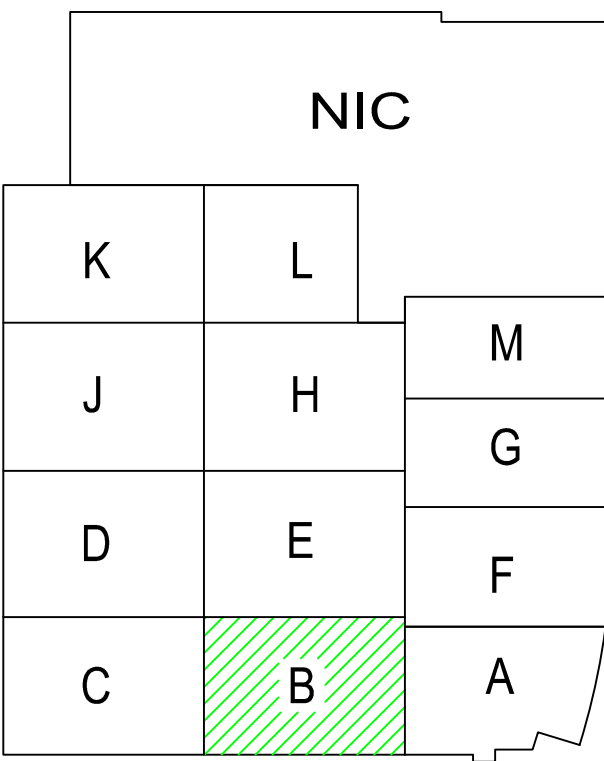
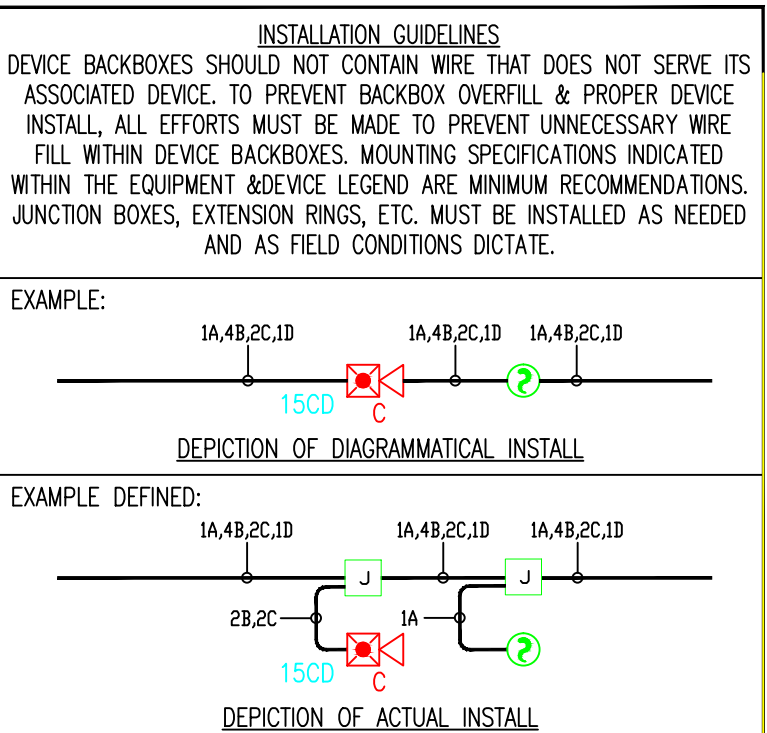
MCCARTHY APPROVAL

- A. Approved as noted for Architectural Review ☐
B. Review and Resubmit ☐
C. Reject ☐

This review is for general conformance with Plans and Specifications only. Any deviation from same not clearly noted by the Designer hereon shall be deemed not to constitute a complete release of the Designer's responsibility for any error or deviation from contract requirements.

McCarthy

By: _____ Date: _____
SHEP DRAWING REFERENCE NO. _____



Key Plan
N.T.S.

NORTH

4.) AS FIELD CONDITIONS DICTATE ACTUAL RACEWAY INSTALLATIONS, DEVICE BACK BOXES AND JUNCTION BOXES SHALL BE SIZED PER FIELD INSTALLING CONDITIONS. DEVICE BACK BOX SIZES INDICATED WITHIN THIS DRAWING PACKAGE ARE MINIMUM REQUIREMENTS ONLY. AN INCREASE IN BACK BOX DEPTH, ADDITION OF EXTENSION BOX/RING, ETC. MAY BE REQUIRED IN ORDER TO PROPERLY ACCOMMODATE FOR WIRE QUANTITIES INSTALLED WITHIN THE RACEWAY.

3.) THE INSTALLATION OF DEVICE BACKBOXES & WIRE SHALL BE SIZED AND INSTALLED PER CEC. IN ADDITION SUCH BOXES & WIRE SHALL BE INSTALLED IN A MANNER AS TO ALLOW FOR THE EASE OF DEVICE INSTALLATION. THE INSTALLATION OF DEVICES WHICH REQUIRE EXCESSIVE FORCE, THE PINCHING OF WIRES, RESULT IN GROUND FAULTS, ETC. IN ORDER TO PROPERLY SEAT THE DEVICE TO IT'S FINISHED SURFACE SHALL BE CONSIDERED UNACCEPTABLE AND A NON-SIEMENS INSTALLATION STANDARD.

2.) ADDITIONAL JUNCTION BOXES NOT SHOWN WITHIN THESE PLANS MAY BE REQUIRED TO ACCOMMODATE PROPER RACEWAY INSTALLATIONS & SIZING. IT IS THE ELECTRICAL CONTRACTORS RESPONSIBILITY TO DETERMINE THE NECESSARY AMOUNT OF JUNCTION BOXES/EXTENSION RINGS REQUIRED.

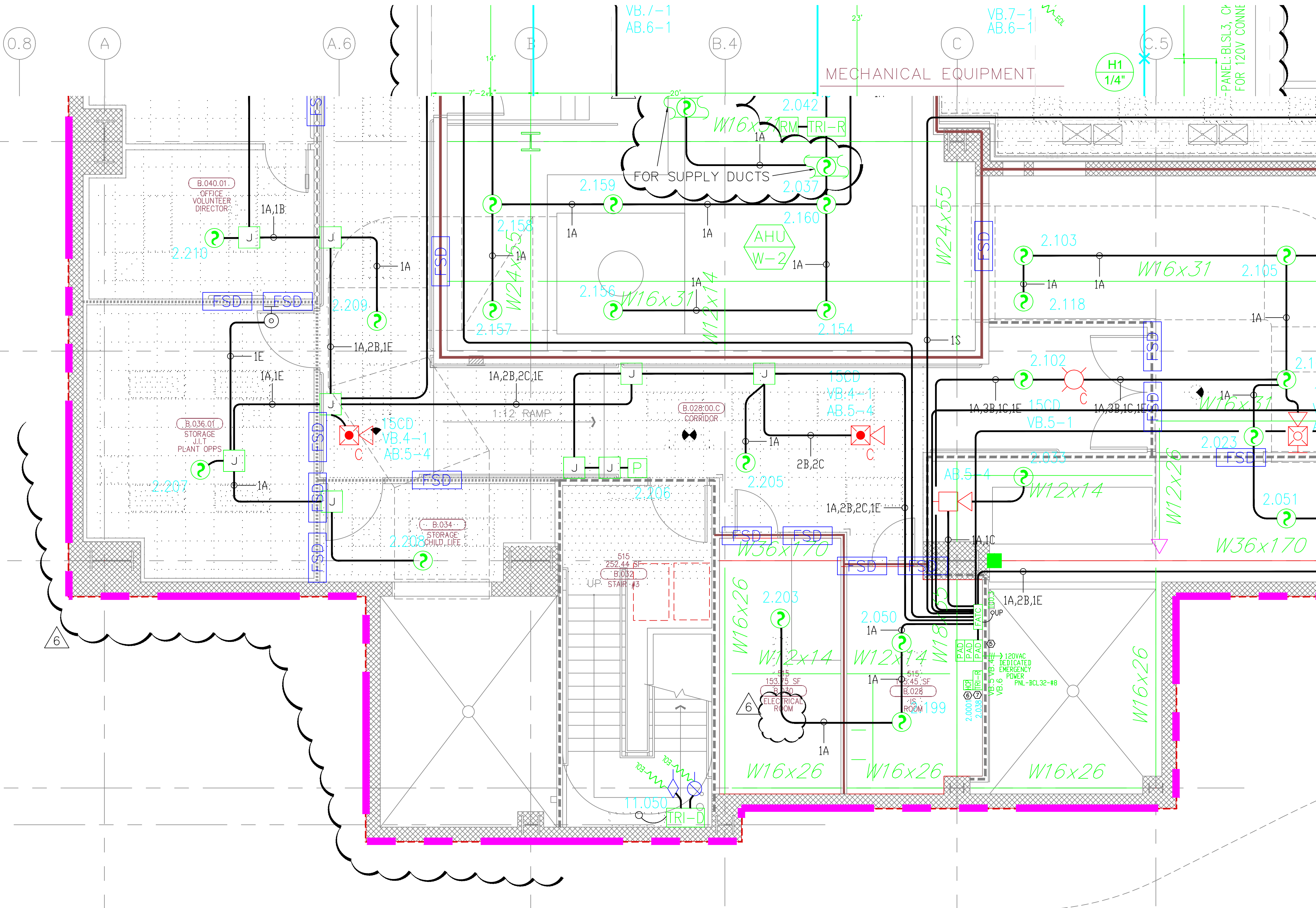
1.) ALL RACEWAY RUNS INDICATED WITHIN THIS DRAWING PACKAGE ARE SHOWN DIAGRAMMATICALLY AND ARE FOR CIRCUITING PURPOSES ONLY. ALL RUNS SHOWN SHOULD NOT SERVE IN ANY WAY AS AN ACTUAL ROUTING GUIDE FOR INSTALLATION OF RACEWAYS. EXACT INSTALL LOCATION SHALL BE FIELD DETERMINED.

1) ALL RACEWAY RUNS INDICATED WITHIN THIS DRAWING PACKAGE ARE SHOWN DIAGRAMMATICALLY AND ARE FOR CIRCUITING PURPOSES ONLY. ALL RUNS SHOWN SHOULD NOT SERVE IN ANY WAY AS AN ACTUAL ROUTING GUIDE FOR INSTALLATION OF RACEWAYS. EXACT INSTALL LOCATION SHALL BE FIELD DETERMINED.

2) ADDITIONAL JUNCTION BOXES NOT SHOWN WITHIN THESE PLANS MAY BE REQUIRED TO ACCOMMODATE PROPER RACEWAY INSTALLATIONS & SIZING. IT IS THE ELECTRICAL CONTRACTORS RESPONSIBILITY TO DETERMINE THE NECESSARY AMOUNT OF JUNCTION BOXES/EXTENSION RINGS REQUIRED. ALL INSTALLATION MATERIAL, SUCH AS CONDUIT FITTING, BOXES, AND HANGERS, ETC. NOT SUPPLIED BY SIEMENS.

3) AS FIELD CONDITIONS DICTATE ACTUAL RACEWAY INSTALLATIONS, DEVICE BACK BOXES AND JUNCTION BOXES SHALL BE SIZED PER FIELD INSTALLING CONDITIONS. DEVICE BACK BOX SIZES INDICATED WITHIN THIS DRAWING PACKAGE ARE MINIMUM REQUIREMENTS ONLY. AN INCREASE IN BACK BOX DEPTH, ADDITION OF EXTENSION BOX/RING, ETC. MAY BE REQUIRED IN ORDER TO PROPERLY ACCOMMODATE FOR WIRE QUANTITIES INSTALLED WITHIN THE RACEWAY.

4) THE INSTALLATION OF DEVICE BACKBOXES & WIRE SHALL BE SIZED AND INSTALLED PER NEC. IN ADDITION SUCH BOXES & WIRE SHALL BE INSTALLED IN A MANNER AS TO ALLOW FOR THE EASE OF DEVICE INSTALLATION. THE INSTALLATION OF DEVICES WHICH REQUIRE EXCESSIVE FORCE, THE PINCHING OF WIRES, RESULT IN GROUND FAULTS, ETC. IN ORDER TO PROPERLY SEAT THE DEVICE TO IT'S FINISHED SURFACE SHALL BE CONSIDERED UNACCEPTABLE AND A NON-SIEMENS INSTALLATION STANDARD.



SIEMENS

CALIFORNIA STATE CONTRACTORS
LICENSE NO.: #758796 - B/ C10/ C16/ C20

Siemens Building Technologies, Inc.
FIS FIRE/LIFE SAFETY DIVISION

10775 Business Center Drive
Cypress, California 90630 USA
Phone: (714) 761-2200
Fax: (714) 220-4958

This drawing and the information and design application herein contained is the property of SIEMENS BUILDING TECHNOLOGIES, Inc. and is loaned upon the express condition that the same be returned to SIEMENS BUILDING TECHNOLOGIES, Inc. upon request; all information herein contained shall be treated as secret and confidential; no reproduction of this drawing or part thereof shall be made without the written consent of SIEMENS BUILDING TECHNOLOGIES, Incorporated.



BUILDING ELECTRONIC CONTROLS, INC.
2246 Lindsay Way
Glendora, CA 91740

PHONE: (909) 305-1600
FAX #: (909) 305-1604

LICENSE NO.: 728905
CLASSIFICATION: ESI, C-7, C10
EXPIRATION DATE: 11/30/2012
RICHARD TAYLOR



NOTES:

- INTERFERENCE TO PATIENT ROOM BONE LIGHT, DOME LIGHT & POWER SHALL BE FURNISHED AND INSTALLED BY OTHERS.
- NOT USED
- INTERFERENCE TO VEN DOOR / ROLL-DOWN DOOR / SHUTTER FOR RELEASE EQUIPMENT & POWER SHALL BE FURNISHED AND INSTALLED BY OTHERS.
- INTERFERENCE FOR MONITORING STATUS OF EQUIPMENT.
- SYNCHRONIZING CONFIGURATION OF ALL PAD PANELS.
- KEY ACTIVATION & MONITORING / GTRI-50 MONITORING FOR PAD PANELS.
- INTERFERENCE FOR RELEASE OF MAGNETIC DOOR HOLD OPEN DEVICES.
- INTERFERENCE FOR RELEASE OF COMBINATION SMOKE FIRE DAMPER CIRCUITS (EXCLUDING ISOLATION ROOMS).
- INTERFERENCE FOR ELEVATOR RECALL (PRIMARY)
- INTERFERENCE FOR ELEVATOR RECALL (ALT-RECALL)
- INTERFERENCE FOR ELEVATOR SHUNT TRIP
- INTERFERENCE FOR ELEVATOR SHUNT TRIP (BATTERY)
- INTERFERENCE FOR ELEVATOR CAB LIGHT (STEADY)
- INTERFERENCE FOR ELEVATOR CAB LIGHT (FLASHING)
- INTERFERENCE FOR RELEASE OF COMBINATION SMOKE FIRE DAMPER CIRCUITS FOR ISOLATION ROOMS ONLY.
- INTERFERENCE FOR HVAC SHUTDOWN
- INTERFERENCE FOR MONITORING OF DISCONNECT SWITCH
- MONITOR MODULE TO MONITOR ASPIRATING SMOKE DETECTION PANEL.
-FIRE 2
-FIRE 2
-TROUBLE
- CONTROL RELAY (GTRI-50) IS PROVIDED FOR ASPIRATING SMOKE DETECTION PANEL RESET
- MONITOR MODULES TO MONITOR PREACTION PANEL
-ALARM
-SUPERVISORY
-TROUBLE
- PROVIDE 120V AC, 200 AMPS DEDICATED CIRCUIT FOR THE POWER SUPPLY
- CONTROL RELAY (GTRI-50) IS PROVIDED FOR DIMMER CONTROLS ACTIVATION

MCCARTHY APPROVAL

A. Approved as noted for Architectural Review
B. Review and Revisit
C. Reissue

This review is for general conformance with Plans and Specifications only. Any deviations from same not clearly noted by the Engineer have not been reviewed. Review shall not constitute a complete check of detailed dimensions or notes to verify to release the Engineer of contractual responsibility for any error or omission from contract requirements.

McCarthy

By: _____ Date: _____
CHOP DRAWING REFERENCE NO. _____

MXL VOICE XL3 SYSTEM3
XLS FS-250 EST3 OTHER

OSHPD NO. #: IL-072072-30

Rev No.	Date	Remarks	Initial
1	07/20/12	DESIGN REVISION	
2	11/21/11	DESIGN REVISION	
3	07/21/11	DESIGN REVISION	
4	05/02/11	FULLERTON FIRE DEPARTMENT CORRECTIONS	
5	11/30/10	DISPATCH CENTER	LF
6	07/30/10	DISPATCH CENTER	LF
7	11/05/09	BACKGROUND REVISIONS	PM

Rev No. Date Remarks Initial

Drawn: H.JEANG

Checked: -

Approved: -

Date: 07.30.09

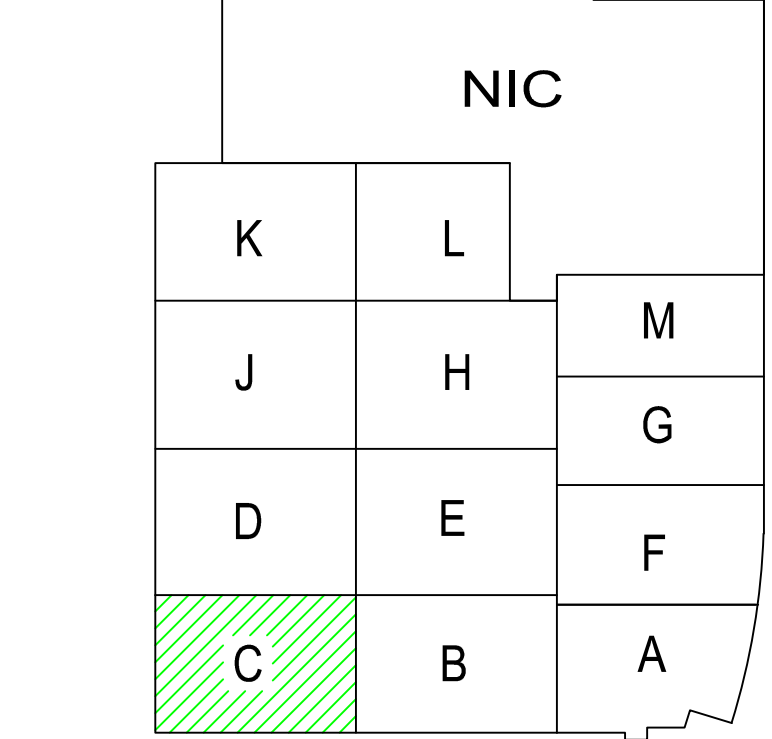
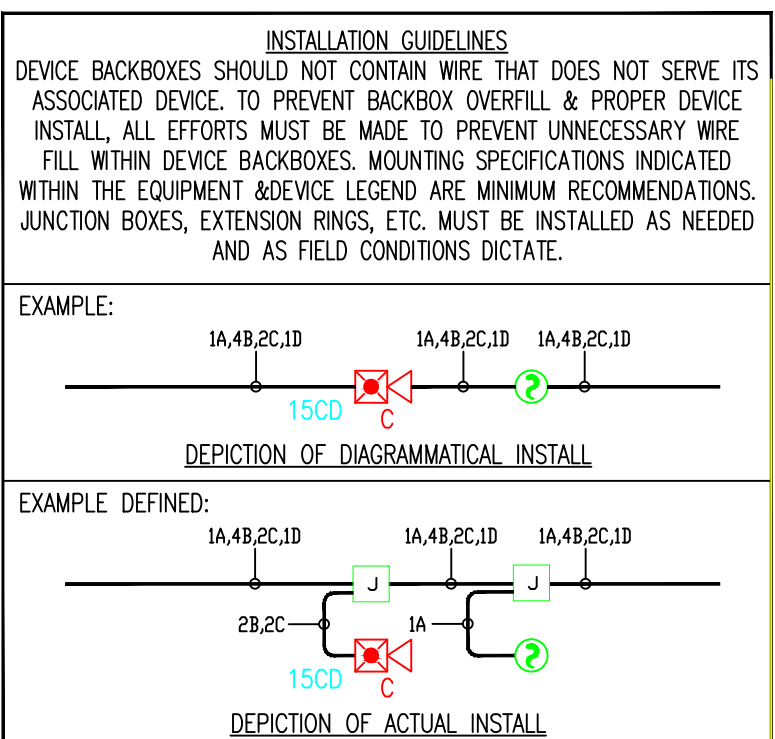
Scale: 0'-1/4" = 1'-0"

FIRE ALARM FLOORPLAN
LOWER LEVEL - AREA C

Job Number: 440P-056306

Project: CHILDRENS HOSPITAL OF
ORANGE COUNTY - TOWER II
455 SOUTH MAIN STREET
ORANGE, CALIFORNIA 92868-3874

Drawing Number: EF3.0C



SIEMENS

CALIFORNIA STATE CONTRACTORS
LICENSE NO.: #758796 - B/ C10/ C16/ C20

Siemens Building Technologies, Inc.
FIS FIRE/LIFE SAFETY DIVISION
10775 Business Center Drive
Cypress, California 90630 USA
Phone: (714) 761-2200
Fax: (714) 220-4958

This drawing and the information and design application herein contained is the property of SIEMENS BUILDING TECHNOLOGIES, Inc. and is loaned upon the express condition that the same be returned to SIEMENS BUILDING TECHNOLOGIES, Inc. upon request; all information herein contained shall be treated as secret and confidential; no reproduction of this drawing or part thereof shall be made without the written consent of SIEMENS BUILDING TECHNOLOGIES, Incorporated.

BEC
Building Electronic Controls, Inc.

BUILDING ELECTRONIC CONTROLS, INC.
2246 Lindsay Way
Glendora, CA 91740
PHONE: (909) 305-1600
FAX #: (909) 305-1604

LICENSE NO.: 729805
CLASSIFICATION: E5, C-7 C10
EXPIRATION DATE: 11/30/2012
RICHARD TAYLOR



- NOTES:
1. LIGHT & POWER SHALL BE FURNISHED AND INSTALLED BY OTHERS.
 2. NOT USED
 3. INTERFACE TO VEN DOOR / ROLL-UP DOOR / SHUTTER FOR RELEASE. EQUIPMENT & POWER SHALL BE FURNISHED AND INSTALLED BY OTHERS.
 4. INTERFACE FOR MONITORING STATUS OF EQUIPMENT.
 5. SYNCHRONIZING CONFIGURATION OF ALL PAD PANELS.
 6. HEDY ACTIVATION & MONITORING / HEDY'S MONITORING FOR PAD PANELS.
 7. INTERFACE FOR RELEASE OF MAGNETIC DOOR HOLD OPEN DEVICES.
 8. INTERFACE FOR RELEASE OF COMBINATION SMOKE FIRE DAMPER CIRCUITS (EXCLUDING ISOLATION ROOMS).
 9. INTERFACE FOR ELEVATOR RECALL (PRIMARY).
 10. INTERFACE FOR ELEVATOR RECALL (ALT-RECALL).
 11. INTERFACE FOR ELEVATOR SHUNT TRIP.
 12. INTERFACE FOR ELEVATOR SHUNT TRIP (BATTERY).
 13. INTERFACE FOR ELEVATOR CAB LIGHT (STEADY).
 14. INTERFACE FOR ELEVATOR CAB LIGHT (FLASHING).
 15. INTERFACE FOR RELEASE OF COMBINATION SMOKE FIRE DAMPER CIRCUITS FOR ISOLATION ROOMS ONLY.
 16. INTERFACE FOR HVAC SHUTDOWN.
 17. INTERFACE FOR MONITORING OF DISCONNECT SWITCH.
 18. MONITOR MODULE TO MONITOR ASPIRATING SMOKE DETECTION PANEL.
 - FIRE 2
 - FIRE 1
 - TROUBLE
 19. CONTROL RELAY (HTRI-2) IS PROVIDED FOR ASPIRATING SMOKE DETECTION PANEL RESET.
 20. MONITOR MODULES TO MONITOR PREACTION PANEL.
 - ALARM
 - SUPERVISORY
 - TROUBLE
 21. PROVIDE 120V AC, 200 AMP'S DEDICATED CIRCUIT FOR THE POWER SUPPLY.
 22. CONTROL RELAY (HTRI-2) IS PROVIDED FOR DIMMER CONTROLS ACTIVATION.

MXL VOICE XL3 SYSTEMS
XLS FS-250 EST3 OTHER

OSHPD NO. #: IL-072072-30

Rev No.	Date	Remarks	Initial
1	07/20/12	DESIGN REVISION	
2	11/21/12	DESIGN REVISION	
3	07/21/11	DESIGN REVISION	
4	05/02/11	FULLERTON FIRE DEPARTMENT CORRECTIONS	
5	11/30/10	DISPATCH DEPARTMENT CORRECTIONS	
6	07/30/10	DISPATCH DEPARTMENT CORRECTIONS	
7	11/05/09	BACKGROUND REVISIONS	

Drawn: H.JEANG

Checked: -

Approved: -

Date: 07.30.09

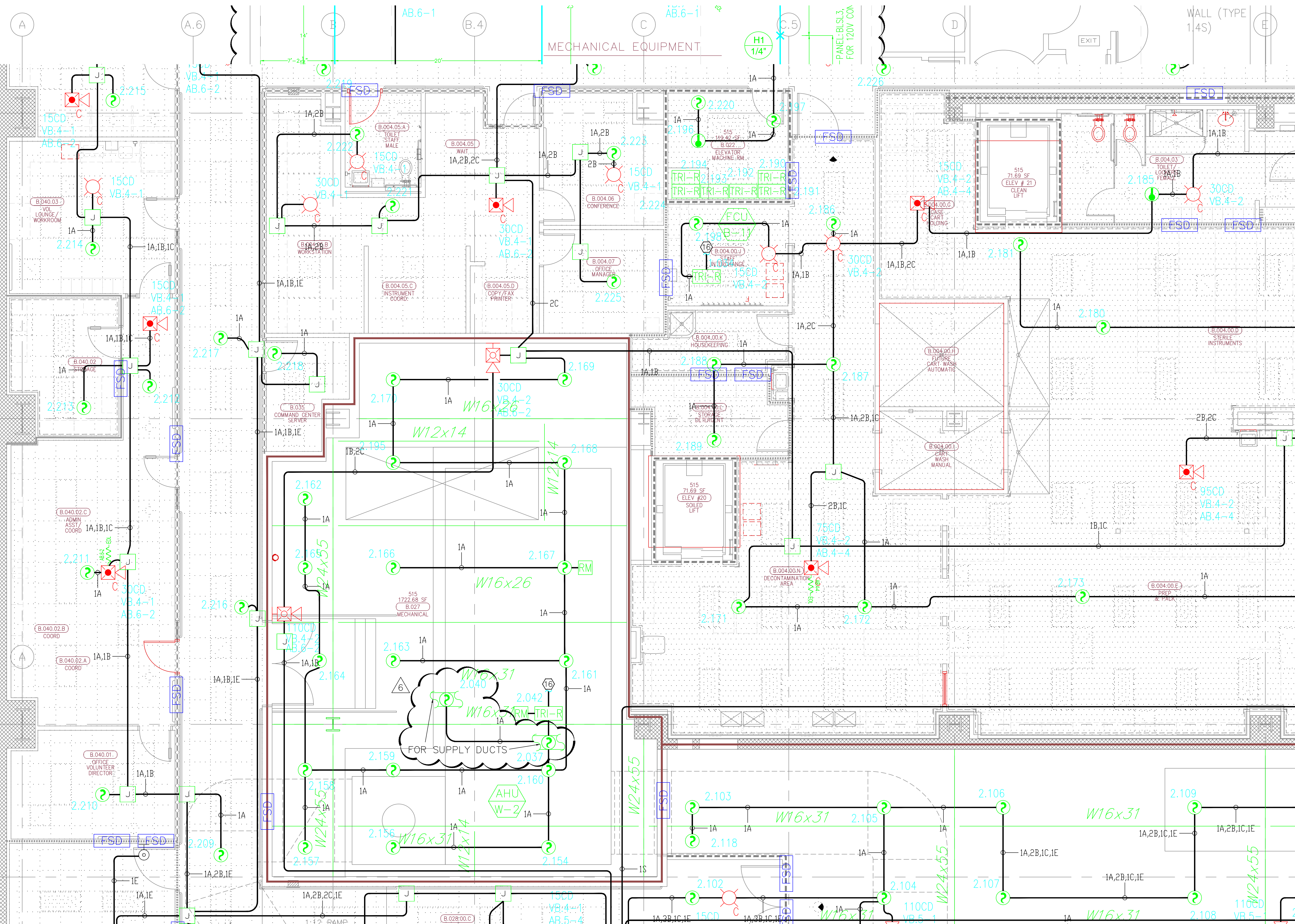
Scale: 0'-1/4" = 1'-0"

FIRE ALARM FLOORPLAN
LOWER LEVEL - AREA D

Job Number: 440P-056306

Project: CHILDRENS HOSPITAL OF
ORANGE COUNTY - TOWER II
455 SOUTH MAIN STREET
ORANGE, CALIFORNIA 92668-3874

Drawing Number: EF3.0D



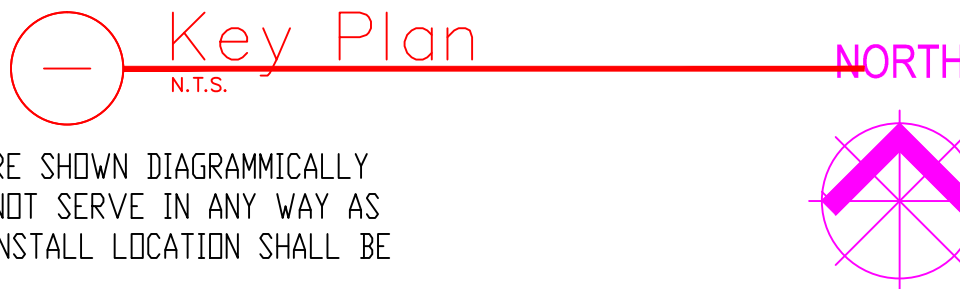
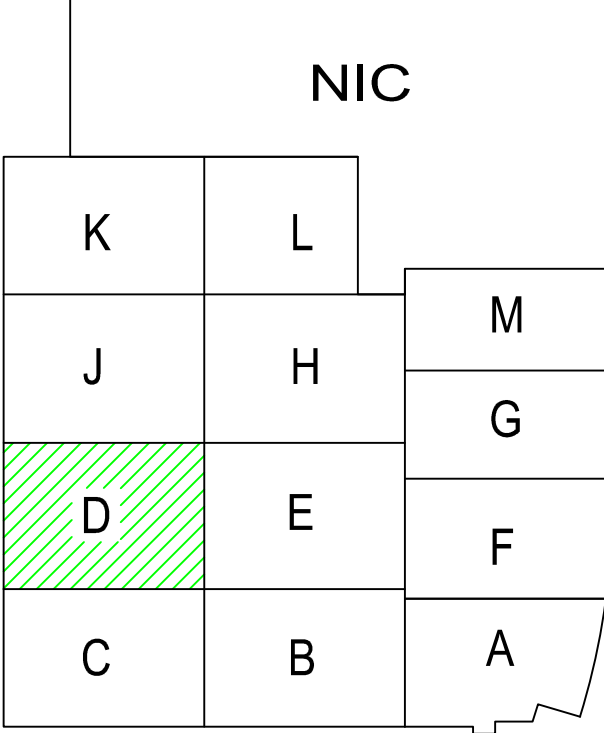
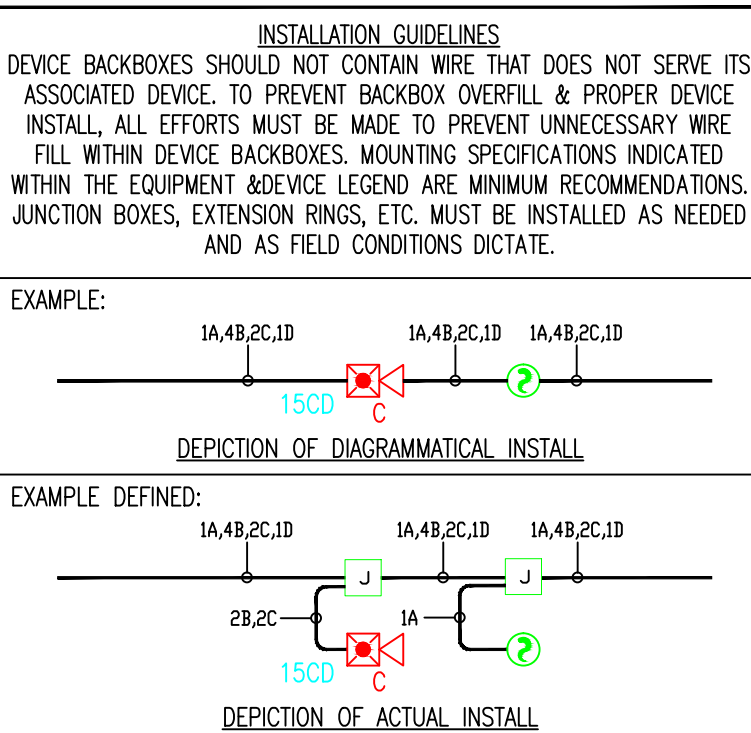
MCCARTHY APPROVAL

A. Approved as noted for Architectural Review
B. Review and Re-submit
C. Rejected

This review is for general conformance with Plans and Specifications only. Any deviation from same not shown herein shall be the responsibility of the contractor. Review shall not constitute a complete release of liability or a warranty of any kind. The contractor shall remain responsible for any error or deviation from contract requirements.

McCarthy

By: _____ Date: _____
SHEP DRAWING REFERENCE NO.



4) AS FIELD CONDITIONS DICTATE ACTUAL RACEWAY INSTALLATIONS, DEVICE BACK BOXES AND JUNCTION BOXES SHALL BE SIZED PER FIELD INSTALLING CONDITIONS. DEVICE BACK BOX SIZES INDICATED WITHIN THIS DRAWING PACKAGE ARE MINIMUM REQUIREMENTS ONLY. AN INCREASE IN BACK BOX DEPTH, ADDITION OF EXTENSION BOX/RING, ETC. MAY BE REQUIRED IN ORDER TO PROPERLY ACCOMMODATE FOR WIRE QUANTITIES INSTALLED WITHIN THE RACEWAY.

3) THE INSTALLATION OF DEVICE BACKBOXES & WIRE SHALL BE SIZED AND INSTALLED PER CEC. IN ADDITION SUCH BOXES & WIRE SHALL BE INSTALLED IN A MANNER AS TO ALLOW FOR THE EASE OF DEVICE INSTALLATION. THE INSTALLATION OF DEVICES WHICH REQUIRE EXCESSIVE FORCE, THE PINCHING OF WIRES, RESULT IN GROUND FAULTS, ETC. IN ORDER TO PROPERLY SEAT THE DEVICE TO IT'S FINISHED SURFACE SHALL BE CONSIDERED UNACCEPTABLE AND A NON-SIEMENS INSTALLATION STANDARD.

2) ADDITIONAL JUNCTION BOXES NOT SHOWN WITHIN THESE PLANS MAY BE REQUIRED TO ACCOMMODATE PROPER RACEWAY INSTALLATIONS & SIZING. IT IS THE ELECTRICAL CONTRACTORS RESPONSIBILITY TO DETERMINE THE NECESSARY AMOUNT OF JUNCTION BOXES/EXTENSION RINGS REQUIRED.

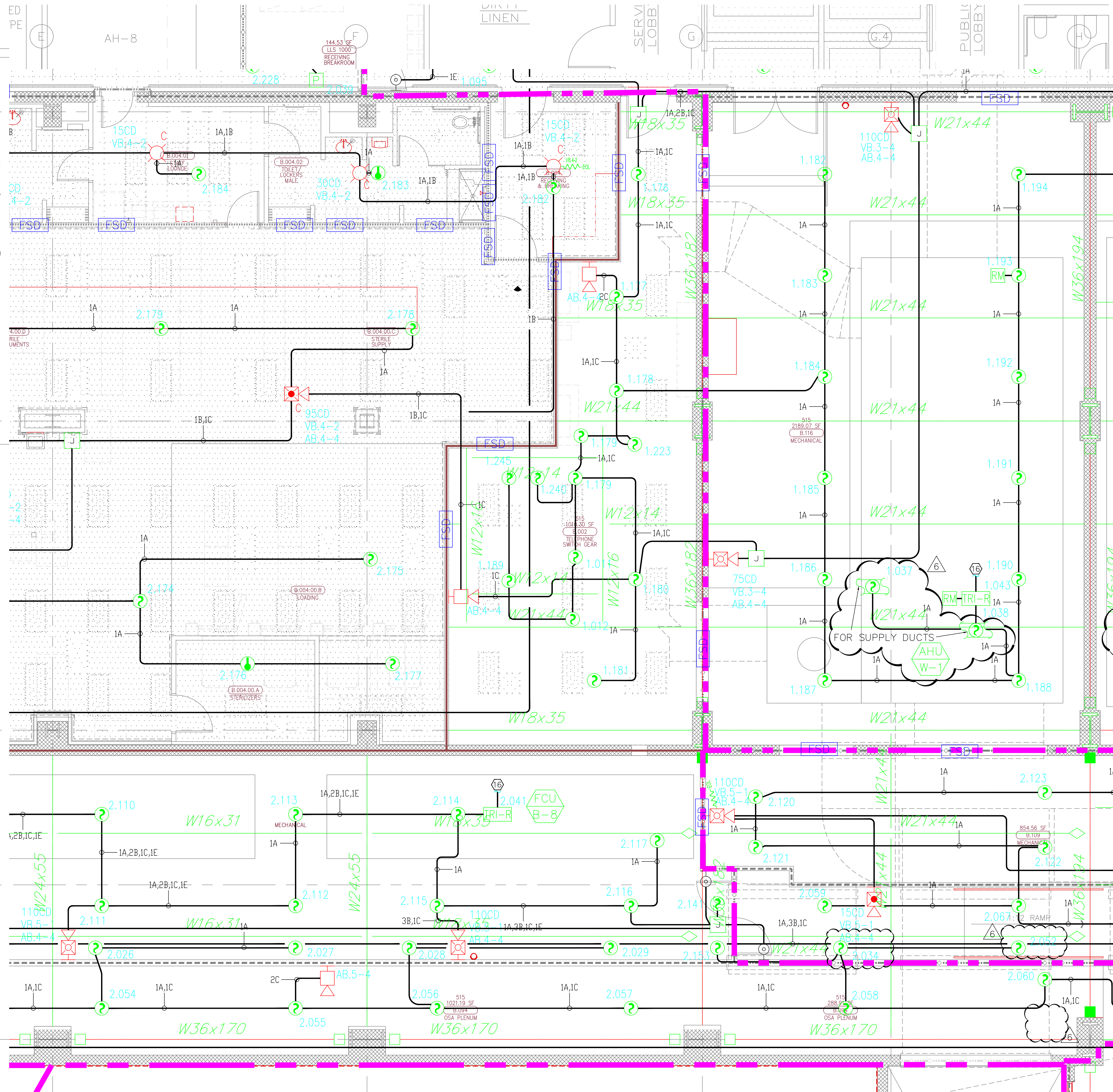
1) ALL RACEWAY RUNS INDICATED WITHIN THIS DRAWING PACKAGE ARE SHOWN DIAGRAMMATICALLY AND ARE FOR CIRCUITING PURPOSES ONLY. ALL RUNS SHOWN SHOULD NOT SERVE IN ANY WAY AS AN ACTUAL ROUTING GUIDE FOR INSTALLATION OF RACEWAYS. EXACT INSTALL LOCATION SHALL BE FIELD DETERMINED.

1) ALL RACEWAY RUNS INDICATED WITHIN THIS DRAWING PACKAGE ARE SHOWN DIAGRAMMATICALLY AND ARE FOR CIRCUITING PURPOSES ONLY. ALL RUNS SHOWN SHOULD NOT SERVE IN ANY WAY AS AN ACTUAL ROUTING GUIDE FOR INSTALLATION OF RACEWAYS. EXACT INSTALL LOCATION SHALL BE FIELD DETERMINED.

2) ADDITIONAL JUNCTION BOXES NOT SHOWN WITHIN THESE PLANS MAY BE REQUIRED TO ACCOMMODATE PROPER RACEWAY INSTALLATIONS & SIZING. IT IS THE ELECTRICAL CONTRACTORS RESPONSIBILITY TO DETERMINE THE NECESSARY AMOUNT OF JUNCTION BOXES/EXTENSION RINGS REQUIRED. ALL INSTALLATION MATERIAL, SUCH AS CONDUIT FITTING, BOXES, AND HANGERS, ETC. NOT SUPPLIED BY SIEMENS.

3) AS FIELD CONDITIONS DICTATE ACTUAL RACEWAY INSTALLATIONS, DEVICE BACK BOXES AND JUNCTION BOXES SHALL BE SIZED PER FIELD INSTALLING CONDITIONS. DEVICE BACK BOX SIZES INDICATED WITHIN THIS DRAWING PACKAGE ARE MINIMUM REQUIREMENTS ONLY. AN INCREASE IN BACK BOX DEPTH, ADDITION OF EXTENSION BOX/RING, ETC. MAY BE REQUIRED IN ORDER TO PROPERLY ACCOMMODATE FOR WIRE QUANTITIES INSTALLED WITHIN THE RACEWAY.

4) THE INSTALLATION OF DEVICE BACKBOXES & WIRE SHALL BE SIZED AND INSTALLED PER NEC. IN ADDITION SUCH BOXES & WIRE SHALL BE INSTALLED IN A MANNER AS TO ALLOW FOR THE EASE OF DEVICE INSTALLATION. THE INSTALLATION OF DEVICES WHICH REQUIRE EXCESSIVE FORCE, THE PINCHING OF WIRES, RESULT IN GROUND FAULTS, ETC. IN ORDER TO PROPERLY SEAT THE DEVICE TO ITS FINISHED SURFACE SHALL BE CONSIDERED UNACCEPTABLE AND A NON-SIEMENS INSTALLATION STANDARD.



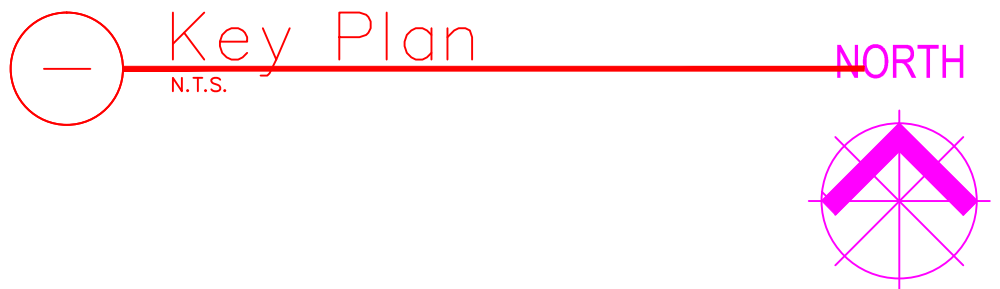
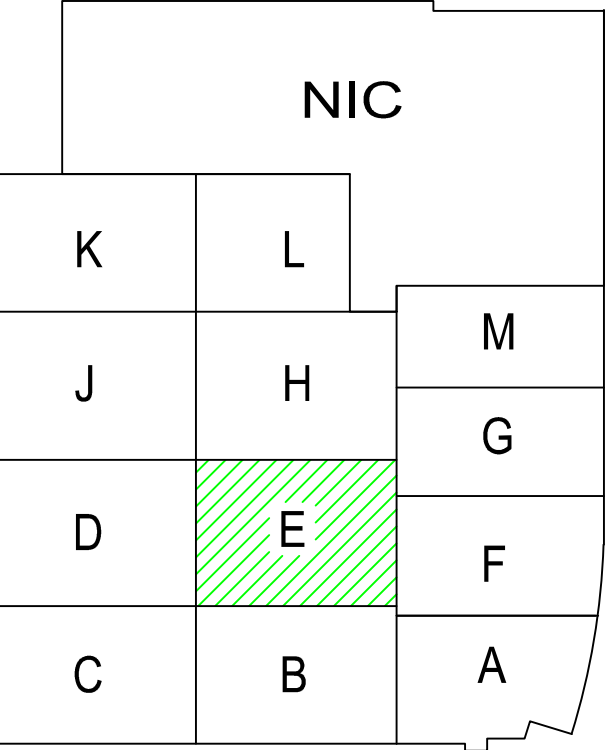
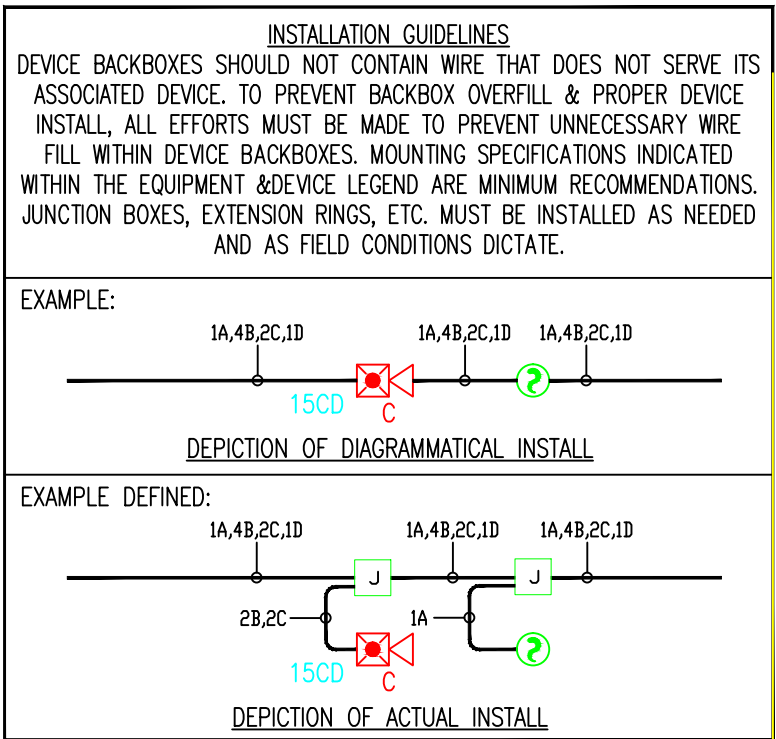
MCCARTHY APPROVAL

A. Approved as noted for Architectural Review
B. Review and Revisit
C. Reissue

This review is for general conformance with Plans and Specifications only. Any deviations from same not clearly noted by the Engineer have not been reviewed. Reviewer shall not constitute a complete check of detailed dimensions or notes to verify the absence of errors or omissions or to verify the absence of errors or omissions or to verify the absence of errors or omissions.

McCarthy

By: _____ Date: _____
CHOP DRAWING REFERENCE NO. _____



SIEMENS

CALIFORNIA STATE CONTRACTORS
LICENSE NO.: #758796 - B/ C10/ C16/ C20

Siemens Building Technologies, Inc.
FIS FIRE/LIFE SAFETY DIVISION

10775 Business Center Drive
Cypress, California 90630 USA

Phone: (714) 761-2200
Fax: (714) 220-4958

This drawing and the information and design application herein contained is the property of SIEMENS BUILDING TECHNOLOGIES, Inc. and is loaned upon the express condition that the same be returned to SIEMENS BUILDING TECHNOLOGIES, Inc. upon request; all information herein contained shall be treated as secret and confidential; no reproduction of this drawing or part thereof shall be made without the written consent of SIEMENS BUILDING TECHNOLOGIES, Incorporated.

BEC

Building Electronic Controls, Inc.

BUILDING ELECTRONIC CONTROLS, INC.
2246 Lindsay Way
Glendora, CA 91740
PHONE: (909) 305-1600
FAX #: (909) 305-1604

LICENSE NO.: 729805
CLASSIFICATION: SV-C-7 C10
EXPIRATION DATE: 11/30/2012
RICHARD TAYLOR

UL

NFPA

- NOTES:**
- INTERFERENCE TO PATIENT ROOM BONE LIGHT, DOME LIGHT & POWER SHALL BE FURNISHED AND INSTALLED BY OTHERS.
 - NOT USED
 - INTERFERENCE TO VEN DOOR / ROLL-DOWN DOOR / SHUTTER FOR RELEASE EQUIPMENT & POWER SHALL BE FURNISHED AND INSTALLED BY OTHERS.
 - INTERFERENCE FOR MONITORING STATUS OF EQUIPMENT.
 - SYNCHRONIZING CONFIGURATION OF ALL PAD PANELS.
 - KEYPAD ACTIVATION & MONITORING / GTRI-RS MONITORING FOR PAD PANELS.
 - INTERFERENCE FOR RELEASE OF MAGNETIC DOOR HOLD OPEN DEVICES.
 - INTERFERENCE FOR RELEASE OF COMBINATION SMOKE FIRE DAMPER CIRCUITS (EXCLUDING ISOLATION ROOMS).
 - INTERFERENCE FOR ELEVATOR RECALL (PRIMARY)
 - INTERFERENCE FOR ELEVATOR RECALL (ALT-RECALL)
 - INTERFERENCE FOR ELEVATOR SHUNT TRIP
 - INTERFERENCE FOR ELEVATOR SHUNT TRIP (BATTERY)
 - INTERFERENCE FOR ELEVATOR CAB LIGHT (STEADY)
 - INTERFERENCE FOR ELEVATOR CAB LIGHT (FLASHING)
 - INTERFERENCE FOR RELEASE OF COMBINATION SMOKE FIRE DAMPER CIRCUITS FOR ISOLATION ROOMS ONLY.
 - INTERFERENCE FOR HVAC SHUTDOWN
 - INTERFERENCE FOR MONITORING OF DISCONNECT SWITCH
 - MONITOR MODULE TO MONITOR ASPIRATING SMOKE DETECTION PANEL.
 - PRE-ALARM - FIRE 2 - TROUBLE
 - CONTROL RELAY (GTRI-R) IS PROVIDED FOR ASPIRATING SMOKE DETECTION PANEL RESET
 - MONITOR MODULES TO MONITOR PREACTION PANEL
 - ALARM - SUPERVISORY - TROUBLE
 - PROVIDE 120V AC, 200 AMP'S DEDICATED CIRCUIT FOR THE POWER SUPPLY
 - CONTROL RELAY (GTRI-R) IS PROVIDED FOR DIMMER CONTROLS ACTIVATION

- ☐ MXL ☐ VOICE ☐ XL3 ☐ SYSTEM3
☒ XLS ☐ FS-250 ☐ EST3 ☐ OTHER

OSHPD NO. #: IL-072072-30

Rev No.	Date	Revision
1	07/20/12	DESIGN REVISION
2	11/27/11	DESIGN REVISION
3	07/21/11	DESIGN REVISION
4	05/02/11	FULLERTON FIRE DEPARTMENT CORRECTIONS
5	11/30/10	DESIGN REVISION
6	07/30/10	DESIGN REVISION
7	11/05/09	BACKGROUND REVISIONS

Rev No.	Date	Revision	Initials
1	07/20/12	DESIGN REVISION	
2	11/27/11	DESIGN REVISION	
3	07/21/11	DESIGN REVISION	
4	05/02/11	FULLERTON FIRE DEPARTMENT CORRECTIONS	
5	11/30/10	DESIGN REVISION	
6	07/30/10	DESIGN REVISION	
7	11/05/09	BACKGROUND REVISIONS	

Job Number: 440P-056306

Project: CHILDRENS HOSPITAL OF ORANGE COUNTY - TOWER II
455 SOUTH MAIN STREET
ORANGE, CALIFORNIA 92668-3874

Drawing Number: EF3.0E

SIEMENS

CALIFORNIA STATE CONTRACTORS
LICENSE NO.: #758796 - B/ C10/ C16/ C20

Siemens Building Technologies, Inc.
FIS FIRE/LIFE SAFETY DIVISION

10775 Business Center Drive
Cypress, California 90630 USA
Phone: (714) 761-2200
Fax: (714) 220-4958

This drawing and the information and design application herein contained is the property of SIEMENS BUILDING TECHNOLOGIES, Inc. and is loaned upon the express condition that the same be returned to SIEMENS BUILDING TECHNOLOGIES, Inc. upon request; all information herein contained shall be treated as secret and confidential; no reproduction of this drawing or part thereof shall be made without the written consent of SIEMENS BUILDING TECHNOLOGIES, Incorporated.

BEC
Building Electronic Controls, Inc.

BUILDING ELECTRONIC CONTROLS, INC.

2246 Lindsay Way
Glendora, CA 91740

PHONE: (909) 305-1600

FAX #: (909) 305-1604

LICENSE NO.: 729805

CLASSIFICATION: C-7 C10

EXPIRATION DATE: 11/30/2012

RICHARD TAYLOR



NOTES:

- INTERFERENCE TO PATIENT ROOM BONE LIGHT, DOME LIGHT & POWER SHALL BE FURNISHED AND INSTALLED BY OTHERS.
- NOT USED
- INTERFERENCE TO VEN DOOR / ROLL-DOWN DOOR / SHUTTER FOR RELEASE EQUIPMENT & POWER SHALL BE FURNISHED AND INSTALLED BY OTHERS.
- INTERFERENCE FOR MONITORING STATUS OF EQUIPMENT.
- SYNCHRONIZING CONFIGURATION OF ALL PAD PANELS.
- KEY ACTIVATION & MONITORING / (HTR) MONITORING FOR PAD PANELS.
- INTERFERENCE FOR RELEASE OF MAGNETIC DOOR HOLD OPEN DEVICES.
- INTERFERENCE FOR RELEASE OF COMBINATION SMOKE FIRE DAMPER CIRCUITS (EXCLUDING ISOLATION ROOMS).
- INTERFERENCE FOR ELEVATOR RECALL (PRIMARY).
- INTERFERENCE FOR ELEVATOR RECALL (ALT-RECALL).
- INTERFERENCE FOR ELEVATOR SHUNT TRIP.
- INTERFERENCE FOR ELEVATOR SHUNT TRIP (BATTERY).
- INTERFERENCE FOR ELEVATOR CAB LIGHT (STEADY).
- INTERFERENCE FOR ELEVATOR CAB LIGHT (FLASHING).
- INTERFERENCE FOR RELEASE OF COMBINATION SMOKE FIRE DAMPER CIRCUITS FOR ISOLATION ROOMS ONLY.
- INTERFERENCE FOR HVAC SHUTDOWN.
- INTERFERENCE FOR MONITORING OF DISCONNECT SWITCH.
- MONITOR MODULE TO MONITOR ASPIRATING SMOKE DETECTION PANEL.
- PRE-ALARM - FIRE 2 - TROUBLE
- CONTROL RELAY (HTR-R) IS PROVIDED FOR ASPIRATING SMOKE DETECTION PANEL RESET.
- MONITOR MODULES TO MONITOR PREACTION PANEL.
- ALARM - SUPERVISORY - TROUBLE
- PROVIDE 120V AC, 200 AMP'S DEDICATED CIRCUIT FOR THE POWER SUPPLY.
- CONTROL RELAY (HTR-R) IS PROVIDED FOR DIMMER CONTROLS ACTIVATION.

MCCARTHY APPROVAL

Approved for actual for architectural Review

Reviewed and Accepted

By: _____ Date: _____

McCarthy

By: _____ Date: _____

CHOP DRAWING REFERENCE NO.

- MXL VOICE XL3 SYSTEMS
XLS FS-250 EST3 OTHER

OSHPD NO. #: IL-072072-30

Rev No.	Date	Remarks	Initial
1	07/20/12	DESIGN REVISION	
2	11/21/11	DESIGN REVISION	
3	07/21/11	DESIGN REVISION	
4	05/02/11	FULLERTON FIRE DEPARTMENT CORRECTIONS	
5	11/30/10	DISPATCH ROOM CORRECTIONS	
6	07/30/10	DISPATCH ROOM CORRECTIONS	
7	11/05/09	BACKGROUND REVISIONS	

Rev No. Date Remarks Initial

Drawn: H.JEANG

Checked: -

Approved: -

Date: 07.30.09

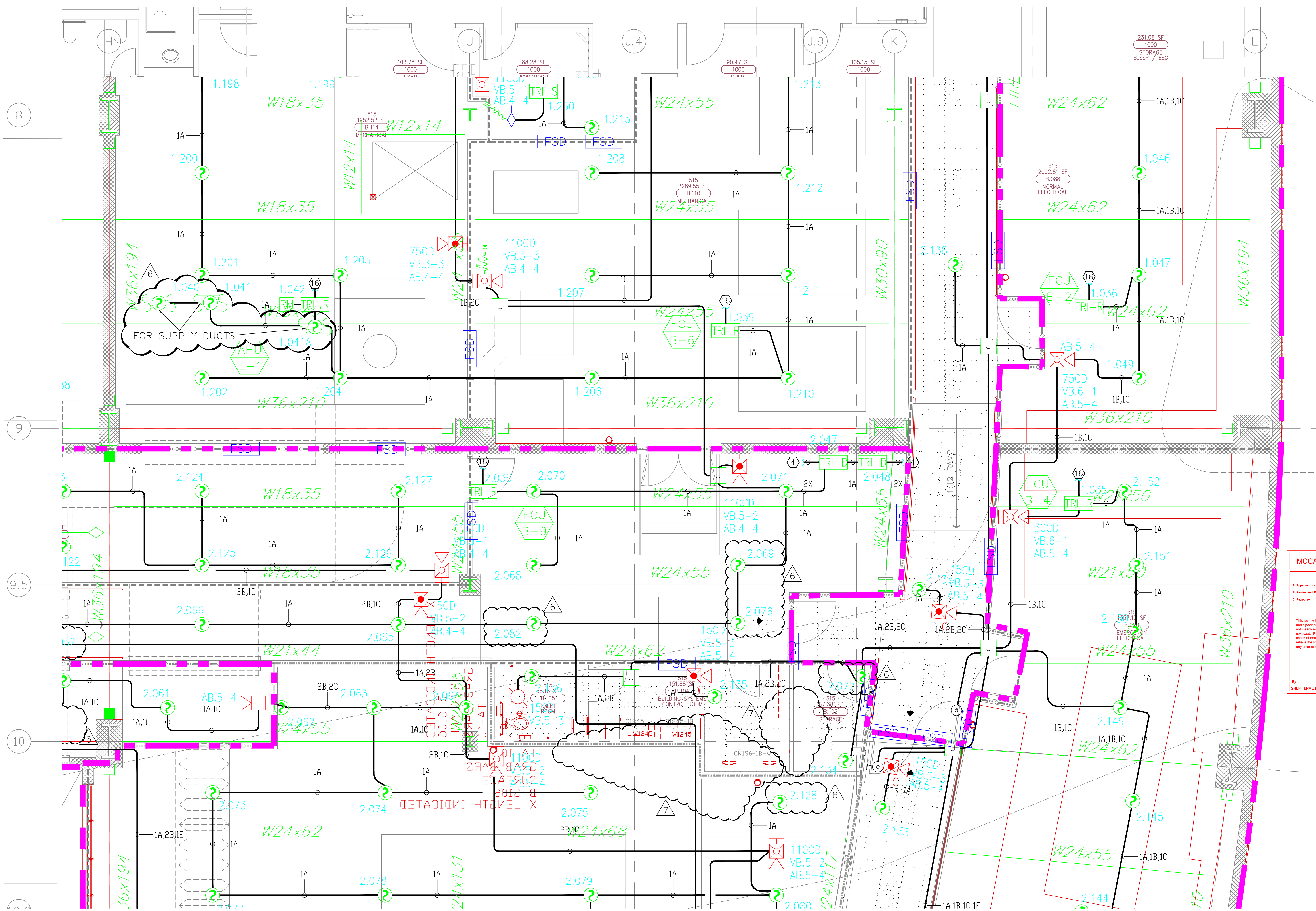
Scale: 0'-1/4" = 1'-0"

FIRE ALARM FLOORPLAN
LOWER LEVEL - AREA F

Job Number: 440P-056306

Project: CHILDRENS HOSPITAL OF
ORANGE COUNTY - TOWER II
455 SOUTH MAIN STREET
ORANGE, CALIFORNIA 92668-3874

Drawing Number: EF3.0F



SIEMENS

CALIFORNIA STATE CONTRACTORS
LICENSE NO.: #758796 - B/ C10/ C16/ C20

Siemens Building Technologies, Inc.
FIS FIRE/LIFE SAFETY DIVISION
10775 Business Center Drive
Cypress, California 90630 USA
Phone: (714) 761-2200
Fax: (714) 220-4958

This drawing and the information and design application herein contained is the property of SIEMENS BUILDING TECHNOLOGIES, Inc. and is loaned upon the express condition that the same be returned to SIEMENS BUILDING TECHNOLOGIES, Inc. upon request; all information herein contained shall be treated as secret and confidential; no reproduction of this drawing or part thereof shall be made without the written consent of SIEMENS BUILDING TECHNOLOGIES, Incorporated.



BUILDING ELECTRONIC CONTROLS, INC.
2246 Lindsay Way
Glendale, CA 91201
PHONE: (805) 305-1600
FAX #: (805) 305-1604
LICENSE NO.: 728905
CLASSIFICATION: E5, C-7, C10
EXPIRATION DATE: 11/30/2012
RICHARD TAYLOR



- NOTES:
- INTERFERENCE TO PATIENT ROOM BONE LIGHT, DOME LIGHT & POWER SHALL BE FURNISHED AND INSTALLED BY OTHERS.
 - NOT USED
 - INTERFERENCE TO VEN DOOR / ROLL-DOWN DOOR / SHUTTER FOR RELEASE EQUIPMENT & POWER SHALL BE FURNISHED AND INSTALLED BY OTHERS.
 - INTERFERENCE FOR MONITORING STATUS OF EQUIPMENT.
 - SYNCHRONIZING CONFIGURATION OF ALL PAD PANELS.
 - KEY ACTIVATION & MONITORING / GFI/RS MONITORING FOR PAD PANELS.
 - INTERFERENCE FOR RELEASE OF MAGNETIC DOOR HOLD OPEN DEVICES.
 - INTERFERENCE FOR RELEASE OF COMBINATION SMOKE FIRE DAMPER CIRCUITS (EXCLUDING ISOLATION ROOMS).
 - INTERFERENCE FOR ELEVATOR RECALL (PRIMARY).
 - INTERFERENCE FOR ELEVATOR RECALL (ALT-RECALL).
 - INTERFERENCE FOR ELEVATOR SHUNT TRIP.
 - INTERFERENCE FOR ELEVATOR SHUNT TRIP (BATTERY).
 - INTERFERENCE FOR ELEVATOR CAB LIGHT (STEADY).
 - INTERFERENCE FOR ELEVATOR CAB LIGHT (FLASHING).
 - INTERFERENCE FOR RELEASE OF COMBINATION SMOKE FIRE DAMPER CIRCUITS FOR ISOLATION ROOMS ONLY.
 - INTERFERENCE FOR HVAC SHUTDOWN.
 - INTERFERENCE FOR MONITORING OF DISCONNECT SWITCH.
 - MONITOR MODULE TO MONITOR ASPIRATING SMOKE DETECTION PANEL.
-PRE-ALARM
-FIRE 2
-TROUBLE
-FIRE 1
-TROUBLE
 - CONTROL RELAY (GTRI-R) IS PROVIDED FOR ASPIRATING SMOKE DETECTION PANEL RESET.
 - MONITOR MODULES TO MONITOR PREACTION PANEL.
-ALARM
-SUPERVISORY
-TROUBLE
 - PROVIDE 120V AC, 200 AMP DEDICATED CIRCUIT FOR THE POWER SUPPLY.
 - CONTROL RELAY (GTRI-R) IS PROVIDED FOR DIMMER CONTROLS ACTIVATION.

MXL VOICE XL3 SYSTEMS
XLS FS-250 EST3 OTHER

OSHPD NO. #: IL-072072-30

Rev No.	Date	Remarks	Initial
1	07/20/12	DESIGN REVISION	
2	11/21/11	DESIGN REVISION	
3	07/21/11	DESIGN REVISION	
4	05/02/11	FULLERTON FIRE DEPARTMENT CORRECTIONS	
5	11/30/10	DISPATCH CENTER CORRECTIONS	LF
6	07/30/10	DISPATCH CENTER CORRECTIONS	LF
7	11/05/09	BACKGROUND REVISIONS	FM

Rev No. Date Remarks Initial

Drawn: H.JEANG

Checked: -

Approved: -

Date: 07.30.09

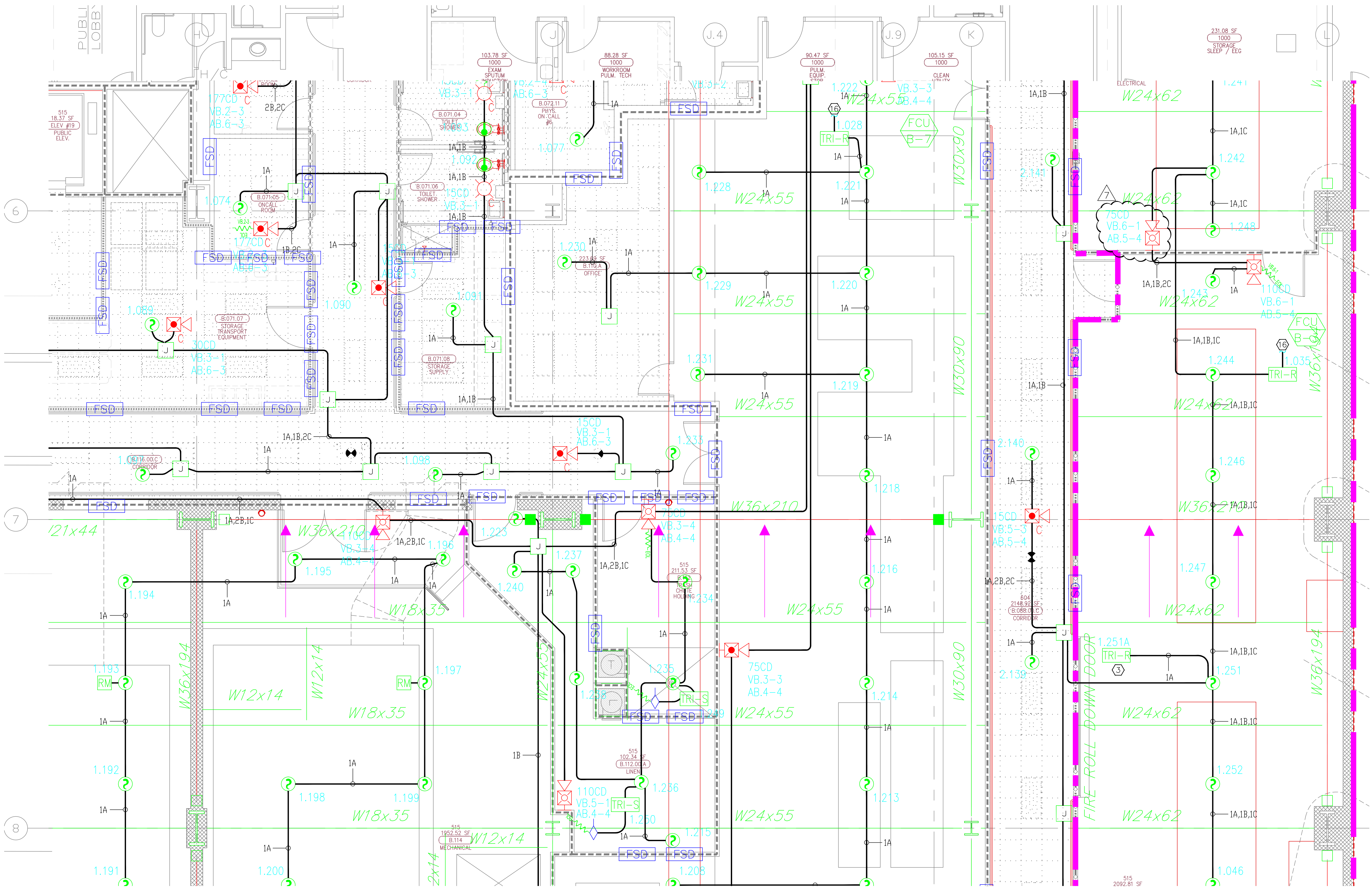
Scale: 0'-1/4" = 1'-0"

FIRE ALARM FLOORPLAN
LOWER LEVEL - AREA G

Job Number: 440P-056306

Project: CHILDRENS HOSPITAL OF
ORANGE COUNTY - TOWER II
455 SOUTH MAIN STREET
ORANGE, CALIFORNIA 92668-3874

Drawing Number: EF3.0G

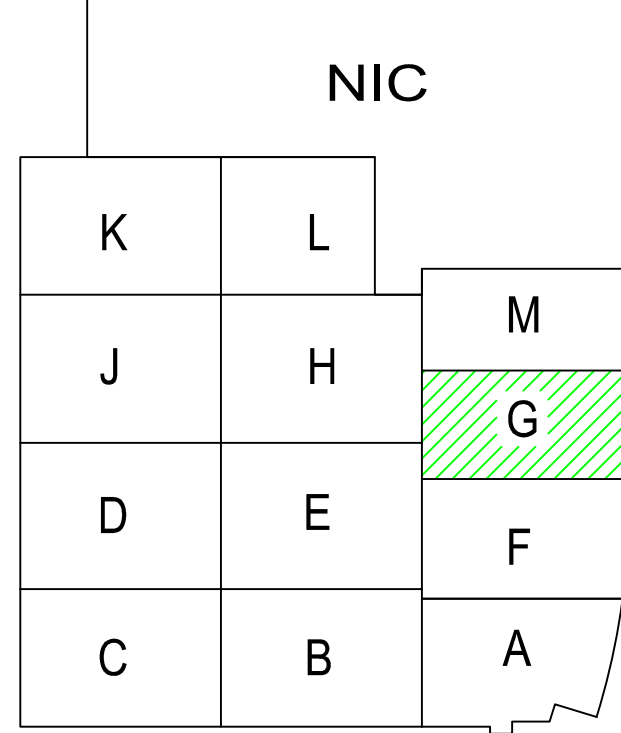
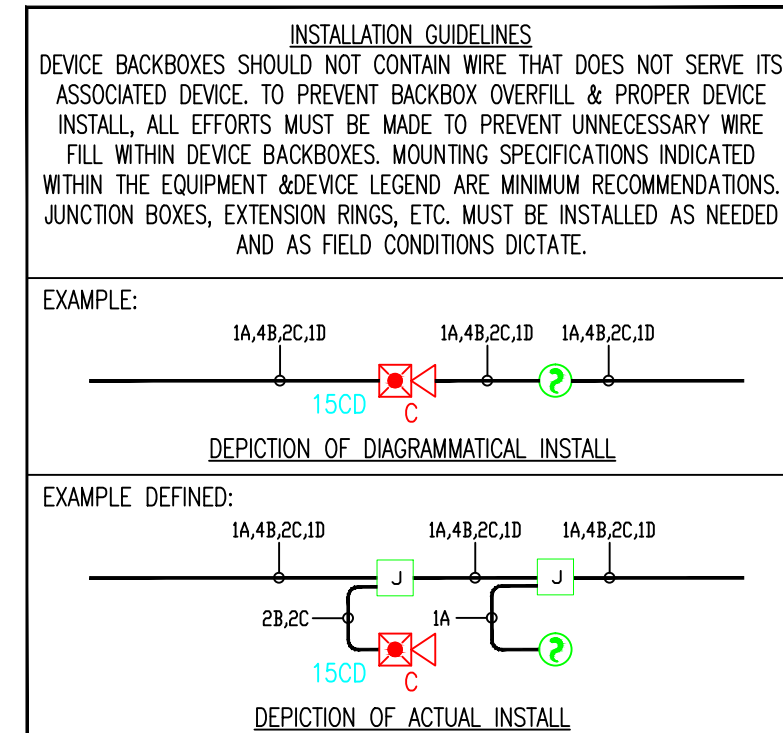


MCCARTHY APPROVAL

A. Approved as noted for Architectural Review
B. Review and Re-submit
C. Rejected

This review is for general conformance with Plans and Specifications only. Any deviation from same not clearly noted by the Project Engineer shall be the responsibility of the Contractor. Review shall not constitute a complete check of material dimensions or quantities to be used in the Project. The Project Engineer shall be responsible for any error or deviation from contract requirements.

McCarthy
By: _____ Date: _____
SHEP DRAWING REFERENCE NO.



4) AS FIELD CONDITIONS DICTATE ACTUAL RACEWAY INSTALLATIONS, DEVICE BACK BOXES AND JUNCTION BOXES SHALL BE SIZED PER FIELD INSTALLING CONDITIONS. DEVICE BACK BOX SIZES INDICATED WITHIN THIS DRAWING PACKAGE ARE MINIMUM REQUIREMENTS ONLY. AN INCREASE IN BACK BOX DEPTH, ADDITION OF EXTENSION BOX/RING, ETC. MAY BE REQUIRED IN ORDER TO PROPERLY ACCOMMODATE FOR WIRE QUANTITIES INSTALLED WITHIN THE RACEWAY.

3) THE INSTALLATION OF DEVICE BACKBOXES & WIRE SHALL BE SIZED AND INSTALLED PER CEC. IN ADDITION SUCH BOXES & WIRE SHALL BE INSTALLED IN A MANNER AS TO ALLOW FOR THE EASE OF DEVICE INSTALLATION. THE INSTALLATION OF DEVICES WHICH REQUIRE EXCESSIVE FORCE, THE PINCHING OF WIRES, RESULT IN GROUND FAULTS, ETC. IN ORDER TO PROPERLY SEAT THE DEVICE TO IT'S FINISHED SURFACE SHALL BE CONSIDERED UNACCEPTABLE AND A NON-SIEMENS INSTALLATION STANDARD.

2) ADDITIONAL JUNCTION BOXES NOT SHOWN WITHIN THESE PLANS MAY BE REQUIRED TO ACCOMMODATE PROPER RACEWAY INSTALLATIONS & SIZING. IT IS THE ELECTRICAL CONTRACTORS RESPONSIBILITY TO DETERMINE THE NECESSARY AMOUNT OF JUNCTION BOXES/EXTENSION RINGS REQUIRED.

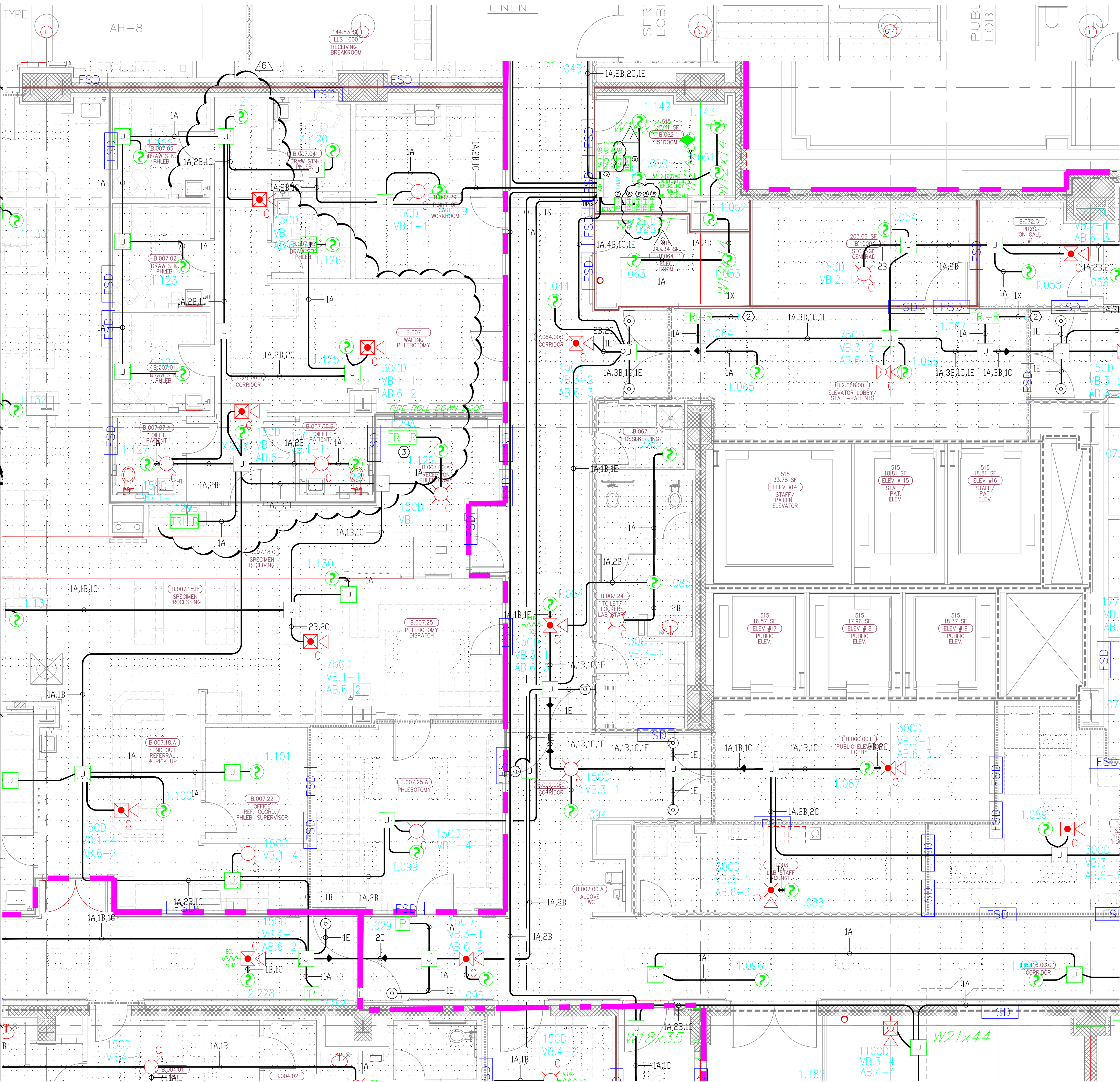
1) ALL RACEWAY RUNS INDICATED WITHIN THIS DRAWING PACKAGE ARE SHOWN DIAGRAMMATICALLY AND ARE FOR CIRCUITING PURPOSES ONLY. ALL RUNS SHOWN SHOULD NOT SERVE IN ANY WAY AS AN ACTUAL ROUTING GUIDE FOR INSTALLATION OF RACEWAYS. EXACT INSTALL LOCATION SHALL BE FIELD DETERMINED.

1) ALL RACEWAY RUNS INDICATED WITHIN THIS DRAWING PACKAGE ARE SHOWN DIAGRAMMATICALLY AND ARE FOR CIRCUITING PURPOSES ONLY. ALL RUNS SHOWN SHOULD NOT SERVE IN ANY WAY AS AN ACTUAL ROUTING GUIDE FOR INSTALLATION OF RACEWAYS. EXACT INSTALL LOCATION SHALL BE FIELD DETERMINED.

2) ADDITIONAL JUNCTION BOXES NOT SHOWN WITHIN THESE PLANS MAY BE REQUIRED TO ACCOMMODATE PROPER RACEWAY INSTALLATIONS & SIZING. IT IS THE ELECTRICAL CONTRACTORS RESPONSIBILITY TO DETERMINE THE NECESSARY AMOUNT OF JUNCTION BOXES/EXTENSION RINGS REQUIRED. ALL INSTALLATION MATERIAL SUCH AS CONDUIT FITTING, BOXES, AND HANGERS, ETC. NOT SUPPLIED BY SIEMENS.

3) AS FIELD CONDITIONS DICTATE ACTUAL RACEWAY INSTALLATIONS, DEVICE BACK BOXES AND JUNCTION BOXES SHALL BE SIZED PER FIELD INSTALLING CONDITIONS. DEVICE BACK BOX SIZES INDICATED WITHIN THIS DRAWING PACKAGE ARE MINIMUM REQUIREMENTS ONLY. AN INCREASE IN BACK BOX DEPTH, ADDITION OF EXTENSION BOX/RING, ETC. MAY BE REQUIRED IN ORDER TO PROPERLY ACCOMMODATE FOR WIRE QUANTITIES INSTALLED WITHIN THE RACEWAY.

4) THE INSTALLATION OF DEVICE BACKBOXES & WIRE SHALL BE SIZED AND INSTALLED PER NEC IN ADDITION SUCH BOXES & WIRE SHALL BE INSTALLED IN A MANNER AS TO ALLOW FOR THE EASE OF DEVICE INSTALLATION. THE INSTALLATION OF DEVICES WHICH REQUIRE EXCESSIVE FORCE, THE PINCHING OF WIRES, RESULT IN GROUND FAULTS, ETC. IN ORDER TO PROPERLY SEAT THE DEVICE TO IT'S FINISHED SURFACE SHALL BE CONSIDERED UNACCEPTABLE AND A NON-SIEMENS INSTALLATION STANDARD.

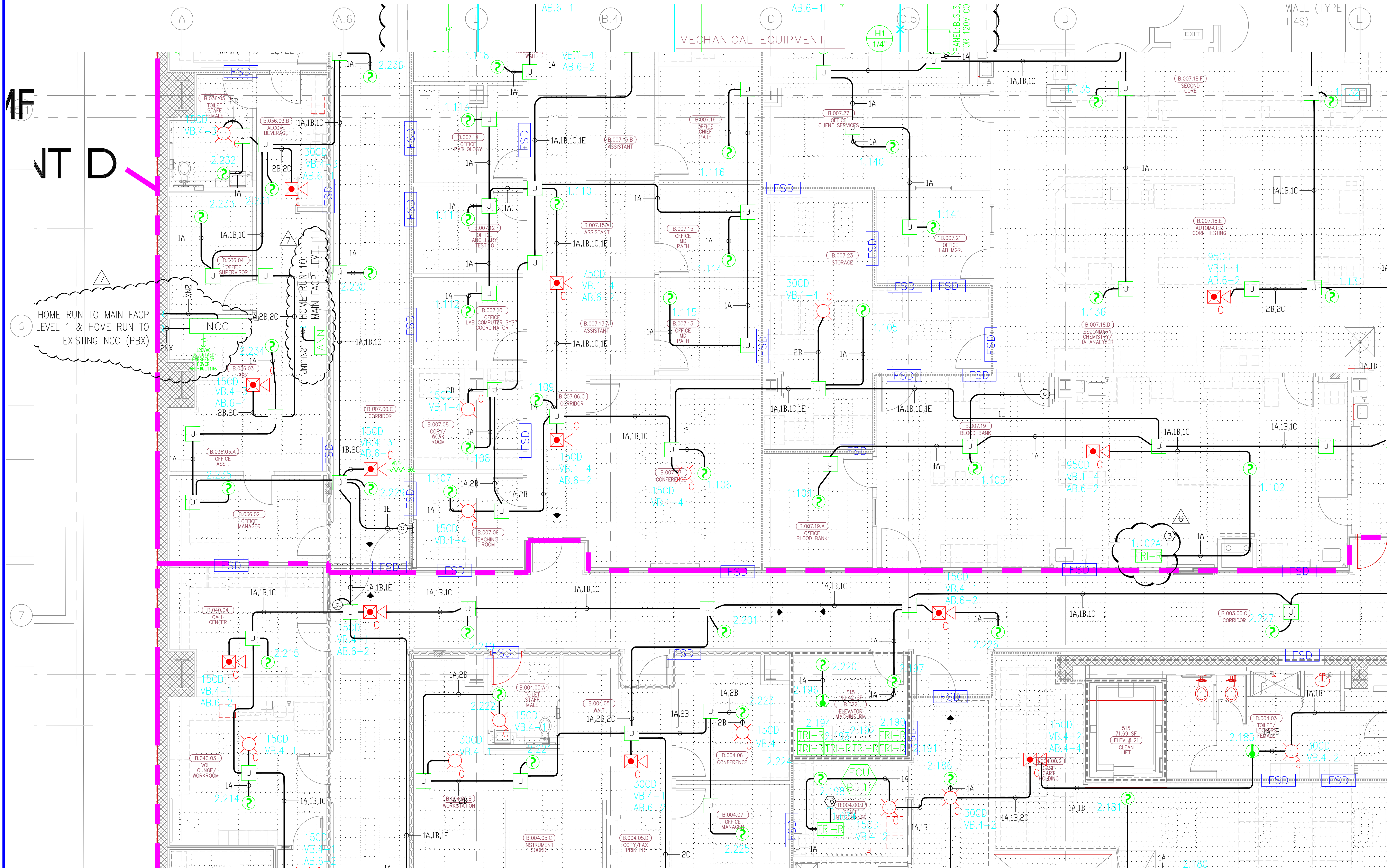


1F

NOT D

6

7



4) AS FIELD CONDITIONS DICTATE ACTUAL RACEWAY INSTALLATIONS, DEVICE BACK BOXES AND JUNCTION BOXES SHALL BE SIZED PER FIELD INSTALLING CONDITIONS. DEVICE BACK BOX SIZES INDICATED WITHIN THIS DRAWING PACKAGE ARE MINIMUM REQUIREMENTS ONLY. AN INCREASE IN BACK BOX DEPTH, ADDITION OF EXTENSION BOX/RING, ETC. MAY BE REQUIRED IN ORDER TO PROPERLY ACCOMMODATE FOR WIRE QUANTITIES INSTALLED WITHIN THE RACEWAY.

3) THE INSTALLATION OF DEVICE BACKBOXES & WIRE SHALL BE SIZED AND INSTALLED PER CEC. IN ADDITION SUCH BOXES & WIRE SHALL BE INSTALLED IN A MANNER AS TO ALLOW FOR THE EASE OF DEVICE INSTALLATION. THE INSTALLATION OF DEVICES WHICH REQUIRE EXCESSIVE FORCE, THE PINCHING OF WIRES, RESULT IN GROUND FAULTS, ETC. IN ORDER TO PROPERLY SEAT THE DEVICE TO ITS FINISHED SURFACE SHALL BE CONSIDERED UNACCEPTABLE AND A NON-SIEMENS INSTALLATION STANDARD.

2) ADDITIONAL JUNCTION BOXES NOT SHOWN WITHIN THESE PLANS MAY BE REQUIRED TO ACCOMMODATE PROPER RACEWAY INSTALLATIONS & SIZING. IT IS THE ELECTRICAL CONTRACTORS RESPONSIBILITY TO DETERMINE THE NECESSARY AMOUNT OF JUNCTION BOXES/EXTENSION RINGS REQUIRED.

1) ALL RACEWAY RUNS INDICATED WITHIN THIS DRAWING PACKAGE ARE SHOWN DIAGRAMMATICALLY AND ARE FOR CIRCUITING PURPOSES ONLY. ALL RUNS SHOWN SHOULD NOT SERVE IN ANY WAY AS AN ACTUAL ROUTING GUIDE FOR INSTALLATION OF RACEWAYS. EXACT INSTALL LOCATION SHALL BE FIELD DETERMINED.

SIEMENS

CALIFORNIA STATE CONTRACTORS
LICENSE NO.: #758796 - B/C10/C16/C20

Siemens Building Technologies, Inc.
FIS FIRE/LIFE SAFETY DIVISION
10775 Business Center Drive
Cypress, California 90630 USA
Phone: (714) 761-2200
Fax: (714) 220-4958

This drawing and the information and design application herein contained is the property of SIEMENS BUILDING TECHNOLOGIES, Inc. and is loaned upon the express condition that the same be returned to SIEMENS BUILDING TECHNOLOGIES, Inc. upon request; all information herein contained shall be treated as secret and confidential; no reproduction of this drawing or part thereof shall be made without the written consent of SIEMENS BUILDING TECHNOLOGIES, Incorporated.

BEC

Building Electronic Controls, Inc.

BUILDING ELECTRONIC CONTROLS, INC.
2246 Lindsay Way
Glendora, CA 91740
PHONE: (909) 305-1600
FAX #: (909) 305-1604

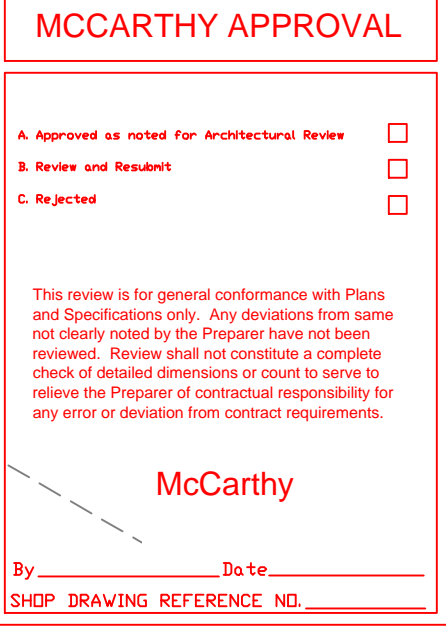
LICENSE NO.: 729805
CLASSIFICATION: E1, E2, E3, E4, E5, E6, E7, E8, E9, E10, E11, E12, E13, E14, E15, E16, E17, E18, E19, E20, E21, E22, E23, E24, E25, E26, E27, E28, E29, E30, E31, E32, E33, E34, E35, E36, E37, E38, E39, E40, E41, E42, E43, E44, E45, E46, E47, E48, E49, E50, E51, E52, E53, E54, E55, E56, E57, E58, E59, E60, E61, E62, E63, E64, E65, E66, E67, E68, E69, E70, E71, E72, E73, E74, E75, E76, E77, E78, E79, E80, E81, E82, E83, E84, E85, E86, E87, E88, E89, E90, E91, E92, E93, E94, E95, E96, E97, E98, E99, E100, E101, E102, E103, E104, E105, E106, E107, E108, E109, E110, E111, E112, E113, E114, E115, E116, E117, E118, E119, E120, E121, E122, E123, E124, E125, E126, E127, E128, E129, E130, E131, E132, E133, E134, E135, E136, E137, E138, E139, E140, E141, E142, E143, E144, E145, E146, E147, E148, E149, E150, E151, E152, E153, E154, E155, E156, E157, E158, E159, E160, E161, E162, E163, E164, E165, E166, E167, E168, E169, E170, E171, E172, E173, E174, E175, E176, E177, E178, E179, E180, E181, E182, E183, E184, E185, E186, E187, E188, E189, E190, E191, E192, E193, E194, E195, E196, E197, E198, E199, E200, E201, E202, E203, E204, E205, E206, E207, E208, E209, E210, E211, E212, E213, E214, E215, E216, E217, E218, E219, E220, E221, E222, E223, E224, E225, E226, E227, E228, E229, E230, E231, E232, E233, E234, E235, E236, E237, E238, E239, E240, E241, E242, E243, E244, E245, E246, E247, E248, E249, E250, E251, E252, E253, E254, E255, E256, E257, E258, E259, E260, E261, E262, E263, E264, E265, E266, E267, E268, E269, E270, E271, E272, E273, E274, E275, E276, E277, E278, E279, E280, E281, E282, E283, E284, E285, E286, E287, E288, E289, E290, E291, E292, E293, E294, E295, E296, E297, E298, E299, E300, E301, E302, E303, E304, E305, E306, E307, E308, E309, E310, E311, E312, E313, E314, E315, E316, E317, E318, E319, E320, E321, E322, E323, E324, E325, E326, E327, E328, E329, E330, E331, E332, E333, E334, E335, E336, E337, E338, E339, E340, E341, E342, E343, E344, E345, E346, E347, E348, E349, E350, E351, E352, E353, E354, E355, E356, E357, E358, E359, E360, E361, E362, E363, E364, E365, E366, E367, E368, E369, E370, E371, E372, E373, E374, E375, E376, E377, E378, E379, E380, E381, E382, E383, E384, E385, E386, E387, E388, E389, E390, E391, E392, E393, E394, E395, E396, E397, E398, E399, E400, E401, E402, E403, E404, E405, E406, E407, E408, E409, E410, E411, E412, E413, E414, E415, E416, E417, E418, E419, E420, E421, E422, E423, E424, E425, E426, E427, E428, E429, E430, E431, E432, E433, E434, E435, E436, E437, E438, E439, E440, E441, E442, E443, E444, E445, E446, E447, E448, E449, E450, E451, E452, E453, E454, E455, E456, E457, E458, E459, E460, E461, E462, E463, E464, E465, E466, E467, E468, E469, E470, E471, E472, E473, E474, E475, E476, E477, E478, E479, E480, E481, E482, E483, E484, E485, E486, E487, E488, E489, E490, E491, E492, E493, E494, E495, E496, E497, E498, E499, E500, E501, E502, E503, E504, E505, E506, E507, E508, E509, E510, E511, E512, E513, E514, E515, E516, E517, E518, E519, E520, E521, E522, E523, E524, E525, E526, E527, E528, E529, E530, E531, E532, E533, E534, E535, E536, E537, E538, E539, E540, E541, E542, E543, E544, E545, E546, E547, E548, E549, E550, E551, E552, E553, E554, E555, E556, E557, E558, E559, E560, E561, E562, E563, E564, E565, E566, E567, E568, E569, E570, E571, E572, E573, E574, E575, E576, E577, E578, E579, E580, E581, E582, E583, E584, E585, E586, E587, E588, E589, E590, E591, E592, E593, E594, E595, E596, E597, E598, E599, E600, E601, E602, E603, E604, E605, E606, E607, E608, E609, E610, E611, E612, E613, E614, E615, E616, E617, E618, E619, E620, E621, E622, E623, E624, E625, E626, E627, E628, E629, E630, E631, E632, E633, E634, E635, E636, E637, E638, E639, E640, E641, E642, E643, E644, E645, E646, E647, E648, E649, E650, E651, E652, E653, E654, E655, E656, E657, E658, E659, E660, E661, E662, E663, E664, E665, E666, E667, E668, E669, E670, E671, E672, E673, E674, E675, E676, E677, E678, E679, E680, E681, E682, E683, E684, E685, E686, E687, E688, E689, E690, E691, E692, E693, E694, E695, E696, E697, E698, E699, E700, E701, E702, E703, E704, E705, E706, E707, E708, E709, E710, E711, E712, E713, E714, E715, E716, E717, E718, E719, E720, E721, E722, E723, E724, E725, E726, E727, E728, E729, E730, E731, E732, E733, E734, E735, E736, E737, E738, E739, E740, E741, E742, E743, E744, E745, E746, E747, E748, E749, E750, E751, E752, E753, E754, E755, E756, E757, E758, E759, E760, E761, E762, E763, E764, E765, E766, E767, E768, E769, E770, E771, E772, E773, E774, E775, E776, E777, E778, E779, E780, E781, E782, E783, E784, E785, E786, E787, E788, E789, E790, E791, E792, E793, E794, E795, E796, E797, E798, E799, E800, E801, E802, E803, E804, E805, E806, E807, E808, E809, E810, E811, E812, E813, E814, E815, E816, E817, E818, E819, E820, E821, E822, E823, E824, E825, E826, E827, E828, E829, E830, E831, E832, E833, E834, E835, E836, E837, E838, E839, E840, E841, E842, E843, E844, E845, E846, E847, E848, E849, E850, E851, E852, E853, E854, E855, E856, E857, E858, E859, E860, E861, E862, E863, E864, E865, E866, E867, E868, E869, E870, E871, E872, E873, E874, E875, E876, E877, E878, E879, E880, E881, E882, E883, E884, E885, E886, E887, E888, E889, E890, E891, E892, E893, E894, E895, E896, E897, E898, E899, E900, E901, E902, E903, E904, E905, E906, E907, E908, E909, E910, E911, E912, E913, E914, E915, E916, E917, E918, E919, E920, E921, E922, E923, E924, E925, E926, E927, E928, E929, E930, E931, E932, E933, E934, E935, E936, E937, E938, E939, E940, E941, E942, E943, E944, E945, E946, E947, E948, E949, E950, E951, E952, E953, E954, E955, E956, E957, E958, E959, E960, E961, E962, E963, E964, E965, E966, E967, E968, E969, E970, E971, E972, E973, E974, E975, E976, E977, E978, E979, E980, E981, E982, E983, E984, E985, E986, E987, E988, E989, E990, E991, E992, E993, E994, E995, E996, E997, E998, E999, E1000, E1001, E1002, E1003, E1004, E1005, E1006, E1007, E1008, E1009, E1010, E1011, E1012, E1013, E1014, E1015, E1016, E1017, E1018, E1019, E1020, E1021, E1022, E1023, E1024, E1025, E1026, E1027, E1028, E1029, E1030, E1031, E1032, E1033, E1034, E1035, E1036, E1037, E1038, E1039, E1040, E1041, E1042, E1043, E1044, E1045, E1046, E1047, E1048, E1049, E1050, E1051, E1052, E1053, E1054, E1055, E1056, E1057, E1058, E1059, E1060, E1061, E1062, E1063, E1064, E1065, E1066, E1067, E1068, E1069, E1070, E1071, E1072, E1073, E1074, E1075, E1076, E1077, E1078, E1079, E1080, E1081, E1082, E1083, E1084, E1085, E1086, E1087, E1088, E1089, E1090, E1091, E1092, E1093, E1094, E1095, E1096, E1097, E1098, E1099, E1100, E1101, E1102, E1103, E1104, E1105, E1106, E1107, E1108, E1109, E1110, E1111, E1112, E1113, E1114, E1115, E1116, E1117, E1118, E1119, E1120, E1121, E1122, E1123, E1124, E1125, E1126, E1127, E1128, E1129, E1130, E1131, E1132, E1133, E1134, E1135, E1136, E1137, E1138, E1139, E1140, E1141, E1142, E1143, E1144, E1145, E1146, E1147, E1148, E1149, E1150, E1151, E1152, E1153, E1154, E1155, E1156, E1157, E1158, E1159, E1160, E1161, E1162, E1163, E1164, E1165, E1166, E1167, E1168, E1169, E1170, E1171, E1172, E1173, E1174, E1175, E1176, E1177, E1178, E1179, E1180, E1181, E1182, E1183, E1184, E1185, E1186, E1187, E1188, E1189, E1190, E1191, E1192, E1193, E1194, E1195, E1196, E1197, E1198, E1199, E1200, E1201, E1202, E1203, E1204, E1205, E1206, E1207, E1208, E1209, E1210, E1211, E1212, E1213, E1214, E1215, E1216, E1217, E1218, E1219, E1220, E1221, E1222, E1223, E1224, E1225, E1226, E1227, E1228, E1229, E1230, E1231, E1232, E1233, E1234, E1235, E1236, E1237, E1238, E1239, E1240, E1241, E1242, E1243, E1244, E1245, E1246, E1247, E1248, E1249, E1250, E1251, E1252, E1253, E1254, E1255, E1256, E1257, E1258, E1259, E1260, E1261, E1262, E1263, E1264, E1265, E1266, E1267, E1268, E1269, E1270, E1271, E1272, E1273, E1274, E1275, E1276, E1277, E1278, E1279, E1280, E1281, E1282, E1283, E1284, E1285, E1286, E1287, E1288, E1289, E1290, E1291, E1292, E1293, E1294, E1295, E1296, E1297, E1298, E1299, E1300, E1301, E1302, E1303, E1304, E1305, E1306, E1307, E1308, E1309, E1310, E1311, E1312, E1313, E1314, E1315, E1316, E1317, E1318, E1319, E1320, E1321, E1322, E1323, E1324, E1325, E1326, E1327, E1328, E1329, E1330, E1331, E1332, E1333, E1334, E1335, E1336, E1337, E1338, E1339, E1340, E1341, E1342, E1343, E1344, E1345, E1346, E1347, E1348, E1349, E1350, E1351, E1352, E1353, E1354, E1355, E1356, E1357, E1358, E1359, E1360, E1361, E1362, E1363, E1364, E1365, E1366, E1367, E1368, E1369, E1370, E1371, E1372, E1373, E1374, E1375, E1376, E1377, E1378, E1379, E1380, E1381, E1382, E1383, E1384, E1385, E1386, E1387, E1388, E1389, E1390, E1391, E1392, E1393, E1394, E1395, E1396, E1397, E1398, E1399, E1400, E1401, E1402, E1403, E1404, E1405, E1406, E1407, E1408, E1409, E1410, E1411, E1412, E1413, E1414, E1415, E1416, E1417, E1418, E1419, E1420, E1421, E1422, E1423, E1424, E1425, E1426, E1427, E1428, E1429, E1430, E1431, E1432, E1433, E1434, E1435, E1436, E1437, E1438, E1439, E1440, E1441, E1442, E1443, E1444, E1445, E1446, E1447, E1448, E1449, E1450, E1451, E1452, E1453, E1454, E1455, E1456, E1457, E1458, E1459, E1460, E1461, E1462, E1463, E1464, E1465, E1466, E1467, E1468, E1469, E1470, E1471, E1472, E1473, E1474, E1475, E1476, E1477, E1478, E1479, E1480, E1481, E1482, E1483, E1484, E1485, E1486, E1487, E1488, E1489, E1490, E1491, E1492, E1493, E1494, E1495, E1496, E1497, E1498, E1499, E1500, E1501, E1502, E1503, E1504, E1505, E1506, E1507, E1508, E1509, E1510, E1511, E1512, E1513, E1514, E1515, E1516, E1517, E1518, E1519, E1520, E1521, E1522, E1523, E1524, E1525, E1526, E1527, E1528, E1529, E1530, E1531, E1532, E1533, E1534, E1535, E1536, E1537, E1538, E1539, E1540, E1541, E1542, E1543, E1544, E1545, E1546, E1547, E1548, E1549, E1550, E1551, E1552, E1553, E1554, E1555, E1556, E1557, E1558, E1559, E1560, E1561, E1562, E1563, E1564, E1565, E1566, E1567, E1568, E1569, E1570, E1571, E1572, E1573, E1574, E1575, E1576, E1577, E1578, E1579, E1580, E1581, E1582, E1583, E1584, E1585, E1586, E1587, E1588, E1589, E1590, E1591, E1592, E1593, E1594, E1595, E1596, E1597, E1598, E1599, E1600, E1601, E1602, E1603, E1604, E1605, E1606, E1607, E1608, E1609, E1610, E1611, E1612, E1613, E1614, E1615, E1616, E1617, E1618, E1619, E1620, E1621, E1622, E1623, E1624, E1625, E1626, E1627, E1628, E1629, E1630, E1631, E1632, E1633, E1634, E1635, E1636, E1637, E1638, E1639, E1640, E1641, E1642, E1643, E1644, E1645, E1646, E1647, E1648, E1649, E1650, E1651, E1652, E1653, E1654, E1655, E1656, E1657, E1658, E1659, E1660, E1661, E1662, E1663, E1664, E1665, E1666, E1667, E1668, E1669, E1670, E1671, E1672, E1673, E1674, E1675, E1676, E1677, E1678, E1679, E1680, E1681, E1682, E1683, E1684, E1685, E1686, E1687, E1688, E1689, E1690, E1691, E1692, E1693, E1694, E1695, E1696, E1697, E1698, E1699, E1700, E1701, E1702, E1703, E1704, E1705, E1706, E1707, E1708, E1709, E1710, E1711, E1712, E1713, E1714, E1715, E1716, E1717, E1718, E1719, E1720, E1721, E1722, E1723, E1724, E1725, E1726, E1727, E1728, E1729, E1730, E1731, E1732, E1733, E1734, E1735, E1736, E1737, E1738, E1739, E1740, E1741, E1742, E1743, E1744, E1745, E1746, E1747, E1748, E1749, E1750, E1751, E1752, E1753, E1754, E1755, E1756, E1757, E1758, E1759, E1760, E1761, E1762, E1763, E1764, E1765, E1766, E1767, E1768, E1769, E1770, E1771, E1772, E1773, E1774, E1775, E1776, E1777, E1778, E1779, E1780, E1781, E1782, E1783, E1784, E1785, E1786, E1787, E1788, E1789, E1790, E1791, E1792, E1793, E1794, E1795, E1796, E1797, E1798, E1799, E1800, E1801, E1802, E1803, E1804, E1805, E1806, E1807, E1808, E1809, E1810, E1811, E1812, E1813, E1814, E1815, E1816, E1817, E1818, E1819, E1820, E1821, E1822, E1823, E1824, E1825, E1826, E1827, E1828, E1829, E1830, E1831, E1832, E1833, E1834, E1835, E1836, E1837, E1838, E1839, E1840, E1841, E1842, E1843, E1844, E1845, E1846, E1847, E1848, E1849, E1850, E1851, E1852, E1853, E1854, E1855, E1856, E1857, E1858, E1859, E1860, E1861, E1862, E1863, E1864, E1865, E1866, E1867, E1868, E1869, E1870, E1871, E1872, E1873, E1874, E1875, E1876, E1877, E1878, E1879, E1880, E1881, E1882, E1883, E1884, E1885, E1886, E1887, E1888, E1889, E1890, E1891, E1892, E1893, E1894, E1895, E1896, E1897, E1898, E1899, E1900, E1901, E1902, E1903, E1904, E1905, E1906, E1907, E1908, E1909, E1910, E1911, E1912, E1913, E1914, E1915, E1916, E1917, E1918, E1919, E1920, E1921, E1922, E1923, E1924, E1925, E1926, E1927, E1928, E1929, E1930, E1931, E1932, E1933, E1934, E1935, E1936, E1937, E1938, E1939, E1940, E1941, E1942, E1943, E1944, E1945, E1946, E1947, E1948, E1949, E1950, E1951, E1952, E1953, E1954, E1955, E1956, E1957, E1958, E1959, E1960, E1961, E1962, E1963, E1964, E1965, E1966, E1967, E1968, E1969, E1970, E1971, E1972, E1973, E1974, E1975, E1976, E1977, E1978, E1979, E1980, E1981, E1982, E1983, E1984, E1985, E1986, E1987, E1988, E1989, E1990, E1991, E1992, E1993, E1994, E1995, E1996, E1997, E1998, E1999, E2000, E2001, E2002, E2003, E2004, E2005, E2006, E2007, E2008, E2009, E2010, E2011, E2012, E2013, E2014, E2015, E2016, E2017, E2018, E2019, E2020, E2021, E2022, E2023, E2024, E2025, E2026, E2027, E2028, E2029, E2030, E2031, E2032, E2033, E2034, E2035, E2036, E2037, E2038, E2039, E2040, E2041, E2042, E2043, E2044, E2045, E2046, E2047, E2048, E2049, E2050, E2051, E2052, E2053, E2054, E20

4.) THE INSTALLATION OF DEVICE BACKBOXES & WIRE SHALL BE SIZED AND INSTALLED PER CEC. IN ADDITION SUCH BOXES & WIRE SHALL BE INSTALLED IN A MANNER AS TO ALLOW FOR THE EASE OF DEVICE INSTALLATION. THE INSTALLATION OF DEVICES WHICH REQUIRE EXCESSIVE FORCE, THE PINCHING OF WIRES, RESULT IN GROUND FAULTS, ETC. IN ORDER TO PROPERLY SEAT THE DEVICE TO IT'S FINISHED SURFACE SHALL BE CONSIDERED UNACCEPTABLE AND A NON-SIEMENS INSTALLATION STANDARD.



Drawing Number: EF3.0K

LET'S GO!



1.) ALL RACEWAY RUNS INDICATED WITHIN THIS DRAWING PACKAGE ARE SHOWN DIAGRAMMATICALLY AND ARE FOR CIRCUITING PURPOSES ONLY. ALL RUNS SHOWN SHOULD NOT SERVE IN ANY WAY AS AN ACTUAL ROUTING GUIDE FOR INSTALLATION OF RACEWAYS. EXACT INSTALL LOCATION SHALL BE FIELD DETERMINED.

SIEMENS

CALIFORNIA STATE CONTRACTORS
LICENSE NO.: #758796 - B/ C10/ C16/ C20

Siemens Building Technologies, Inc.
FIS FIRE/LIFE SAFETY DIVISION
10775 Business Center Drive
Cypress, California 90630 USA
Phone: (714) 761-2200
Fax: (714) 220-4958

This drawing and the information and design application herein contained is the property of SIEMENS BUILDING TECHNOLOGIES, Inc. and is loaned upon the express condition that the same be returned to SIEMENS BUILDING TECHNOLOGIES, Inc. upon request; all information herein contained shall be treated as secret and confidential; no reproduction of this drawing or part thereof shall be made without the written consent of SIEMENS BUILDING TECHNOLOGIES, Incorporated.



BUILDING ELECTRONIC CONTROLS, INC.
2246 Lindsay Way
Glendora, CA 91740
PHONE: (909) 305-1600
FAX #: (909) 305-1604
LICENSE NO.: 729805
CLASSIFICATION (S): C-7 C10
EXPIRATION DATE: 11/30/2012
RICHARD TAYLOR



- NOTES:
- ① INTERFACE TO PATIENT ROOM BONE LIGHT, DOME LIGHT & POWER SHALL BE FURNISHED AND INSTALLED BY OTHERS.
 - ② NOT USED
 - ③ INTERFACE TO VEN DOOR / ROLL-DOWN DOOR / SHUTTER FOR RELEASE EQUIPMENT & POWER SHALL BE FURNISHED AND INSTALLED BY OTHERS.
 - ④ INTERFACE FOR MONITORING STATUS OF EQUIPMENT.
 - ⑤ SYNCHRONIZING CONFIGURATION OF ALL PAD PANELS.
 - ⑥ (HPI) ACTIVATION & MONITORING / (HPI)S MONITORING FOR PAD PANELS.
 - ⑦ INTERFACE FOR RELEASE OF MAGNETIC DOOR HOLD OPEN DEVICES.
 - ⑧ INTERFACE FOR RELEASE OF COMBINATION SMOKE FIRE DAMPER CIRCUITS (EXCLUDING ISOLATION ROOMS).
 - ⑨ INTERFACE FOR ELEVATOR RECALL (PRIMARY)
 - ⑩ INTERFACE FOR ELEVATOR RECALL (ALT-RECALL)
 - ⑪ INTERFACE FOR ELEVATOR SHUNT TRIP
 - ⑫ INTERFACE FOR ELEVATOR SHUNT TRIP (BATTERY)
 - ⑬ INTERFACE FOR ELEVATOR CAB LIGHT (STEADY)
 - ⑭ INTERFACE FOR ELEVATOR CAB LIGHT (FLASHING)
 - ⑮ INTERFACE FOR RELEASE OF COMBINATION SMOKE FIRE DAMPER CIRCUITS FOR ISOLATION ROOMS ONLY.
 - ⑯ INTERFACE FOR HVAC SHUTDOWN
 - ⑰ INTERFACE FOR MONITORING OF DISCONNECT SWITCH
 - ⑱ MONITOR MODULE TO MONITOR ASPIRATING SMOKE DETECTION PANEL.
 - ⑲ -PRE-ALARM -FIRE 2 -TROUBLE
 - ⑳ CONTROL RELAY (HTRI-R) IS PROVIDED FOR ASPIRATING SMOKE DETECTION PANEL RESET
 - ㉑ MONITOR MODULES TO MONITOR PREACTION PANEL
 - ㉒ -ALARM -SUPERVISORY -TROUBLE
 - ㉓ PROVIDE 120V AC, 200 AMP'S DEDICATED CIRCUIT FOR THE POWER SUPPLY
 - ㉔ CONTROL RELAY (HTRI-R) IS PROVIDED FOR DIMMER CONTROLS ACTIVATION

MCCARTHY APPROVAL

A. Approved as noted for architectural Review
B. Review and Rejected
C. Rejected

This review is for general conformance with Plans and Specifications only. Any deviations from same not clearly noted by the Engineer have not been reviewed. Review shall not constitute a complete check of detailed dimensions or notes to verify the proper of construction responsibility for any error or deviation from contract requirements.

McCarthy

By: _____ Date: _____
CHOP DRAWING REFERENCE NO. _____

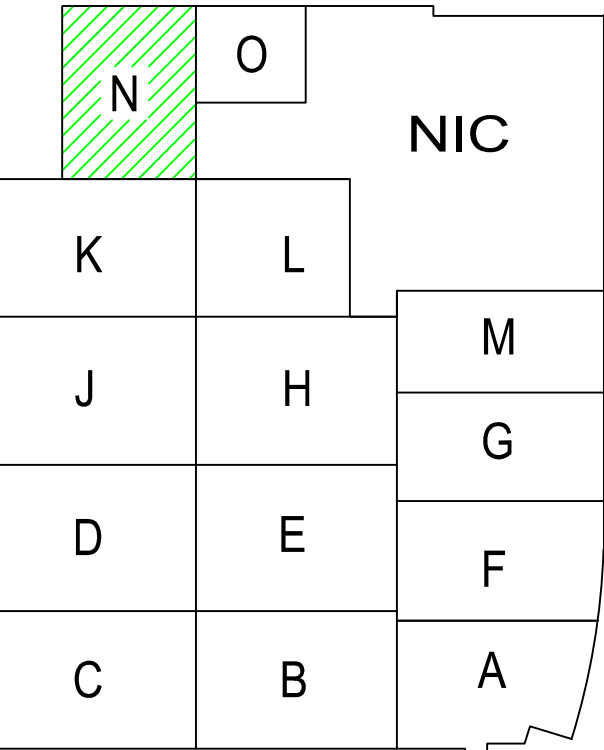
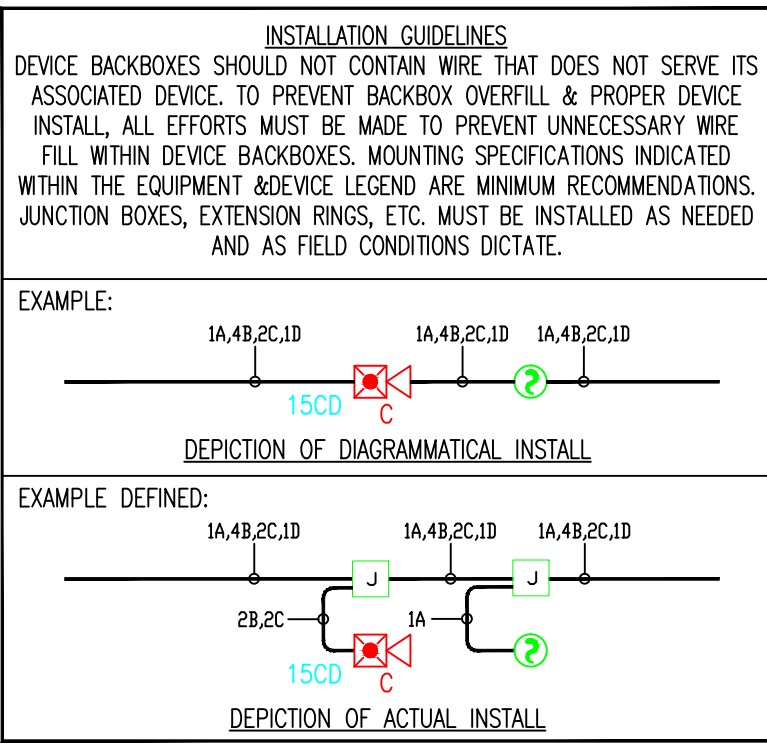
CHAPTER 17 OF NFPA (17.3.6.8) STATES THAT THE ASPIRATING AIR PIPE MUST BE LABELED "SMOKE DETECTOR SAMPLING TUBE - DO NOT DISTURB" AS FOLLOWS:
1. AT CHANGES IN DIRECTION OR BRANCHES OF PIPING.
2. AT EACH SIDE OF PENETRATION OF WALLS, FLOORS OR OTHER BARRIERS.
3. AT INTERVALS ON PIPING THAT PROVIDE VISIBILITY WITHIN THE SPACE, BUT NOT GREATER THAN 20 FEET.

VESDA HOLE LEGEND

H1
1/4"

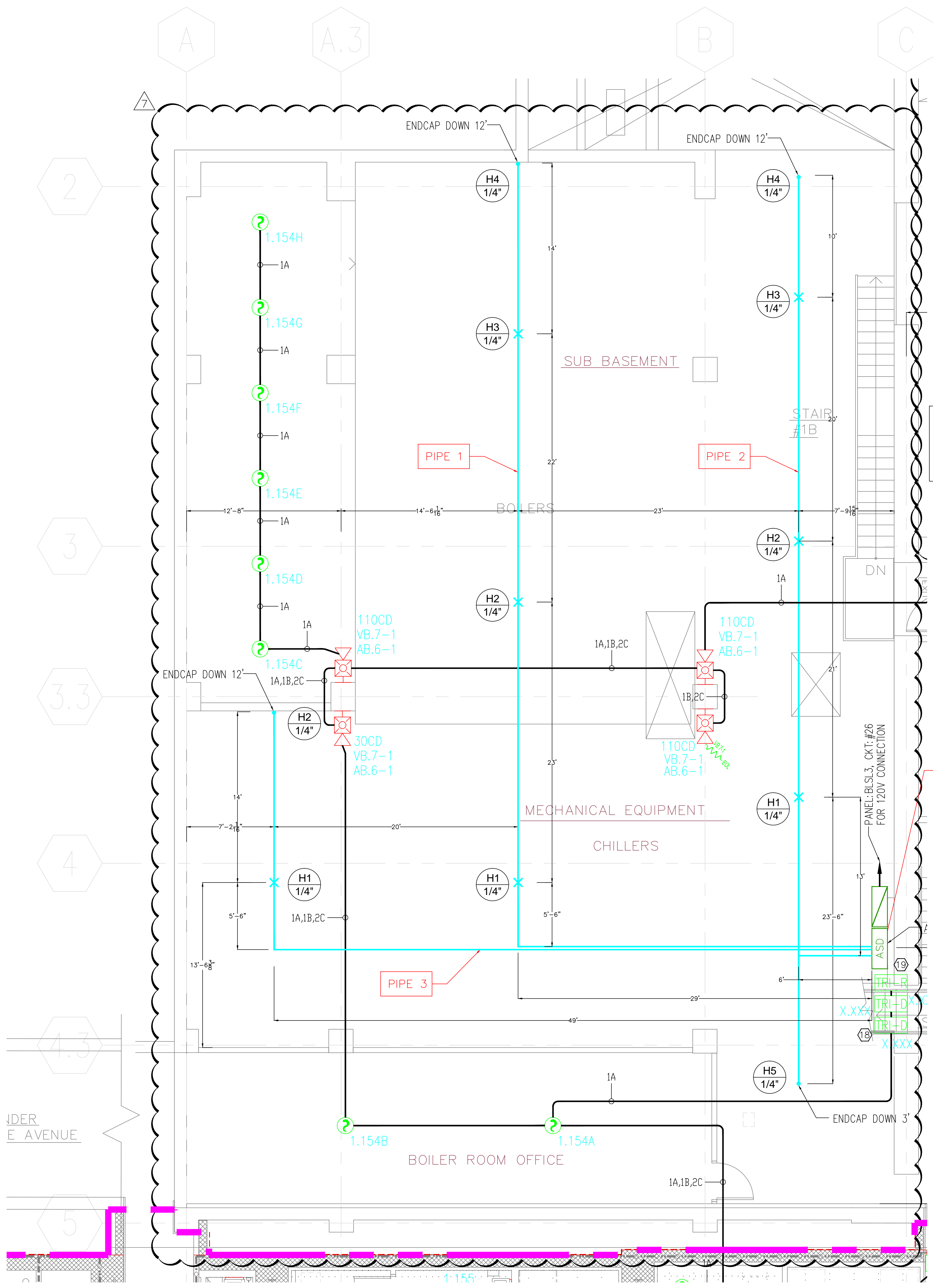
HOLE NUMBER
HOLE DIAMETER

REFER TO PAGE: EF0.14B DETAIL: "1" FOR ASD ISOMETRIC VIEW & TRANSIT TIME CALCULATION.
REFER TO PAGE: EF0.14C DETAIL: "5" FOR ASD POWER SUPPLY CALCULATION.



Key Plan
N.T.S.

NORTH



4) AS FIELD CONDITIONS DICTATE ACTUAL RACEWAY INSTALLATIONS, DEVICE BACK BOXES AND JUNCTION BOXES SHALL BE SIZED PER FIELD INSTALLING CONDITIONS. DEVICE BACK BOX SIZES INDICATED WITHIN THIS DRAWING PACKAGE ARE MINIMUM REQUIREMENTS ONLY. AN INCREASE IN BACK BOX DEPTH, ADDITION OF EXTENSION BOX/RING, ETC. MAY BE REQUIRED IN ORDER TO PROPERLY ACCOMMODATE FOR WIRE QUANTITIES INSTALLED WITHIN THE RACEWAY.

3) THE INSTALLATION OF DEVICE BACKBOXES & WIRE SHALL BE SIZED AND INSTALLED PER CEC. IN ADDITION SUCH BOXES & WIRE SHALL BE INSTALLED IN A MANNER AS TO ALLOW FOR THE EASE OF DEVICE INSTALLATION. THE INSTALLATION OF DEVICES WHICH REQUIRE EXCESSIVE FORCE, THE PINCHING OF WIRES, RESULT IN GROUND FAULTS, ETC. IN ORDER TO PROPERLY SEAT THE DEVICE TO IT'S FINISHED SURFACE SHALL BE CONSIDERED UNACCEPTABLE AND A NON-SIEMENS INSTALLATION STANDARD.

2) ADDITIONAL JUNCTION BOXES NOT SHOWN WITHIN THESE PLANS MAY BE REQUIRED TO ACCOMMODATE PROPER RACEWAY INSTALLATIONS & SIZING. IT IS THE ELECTRICAL CONTRACTORS RESPONSIBILITY TO DETERMINE THE NECESSARY AMOUNT OF JUNCTION BOXES/EXTENSION RINGS REQUIRED.

1) ALL RACEWAY RUNS INDICATED WITHIN THIS DRAWING PACKAGE ARE SHOWN DIAGRAMMATICALLY AND ARE FOR CIRCUITING PURPOSES ONLY. ALL RUNS SHOWN SHOULD NOT SERVE IN ANY WAY AS AN ACTUAL ROUTING GUIDE FOR INSTALLATION OF RACEWAYS. EXACT INSTALL LOCATION SHALL BE FIELD DETERMINED.

INTERFERENCE TO PATIENT ROOM DOME LIGHT. DOME LIGHT & POWER SHALL BE FURNISHED AND INSTALLED BY OTHERS.

NOT USED

INTERFERENCE TO WIN DOOR / ROLL-DOWN DOOR / SHUTTER FOR RELEASE. EQUIPMENT & POWER SHALL BE FURNISHED AND INSTALLED BY OTHERS.

INTERFERENCE FOR MONITORING STATUS OF EQUIPMENT.

SYNCHRONIZING CONFIGURATION OF ALL PAD PANELS.

(RCP) ACTIVATION & MONITORING / (HTR-4) MONITORING FOR PAD PANELS.

INTERFERENCE FOR RELEASE OF MAGNETIC DOOR HOLD FROM REMOTE.

INTERFERENCE FOR RELEASE OF COMBINATION SMOKE FIRE DAMPER CIRCUITS (EXCLUDING ISOLATION ROOMS).

INTERFERENCE FOR ELEVATOR RECALL (PRIMARY)

INTERFERENCE FOR ELEVATOR RECALL (ALT-RECALL)

INTERFERENCE FOR ELEVATOR SHUNT TRIP

INTERFERENCE FOR ELEVATOR SHUNT TRIP (BATTERY)

INTERFERENCE FOR ELEVATOR CAB LIGHT (STEADY)

INTERFERENCE FOR ELEVATOR CAB LIGHT (FLASHING)

INTERFERENCE FOR RELEASE OF COMBINATION SMOKE FIRE DAMPER CIRCUITS FOR ISOLATION ROOMS ONLY.

INTERFERENCE FOR HVAC SHUTDOWN

INTERFERENCE FOR MONITORING OF DISCONNECT SWITCH

MONITOR MODULE TO MONITOR ASPIRATING SMOKE DETECTION PANEL.

-FIRE-ALARM - FIVE 2

-FIRE 1 - TROUBLE

CONTROL RELAY (HTR-4) IS PROVIDED FOR ASPIRATING SMOKE DETECTION PANEL RESET

MONITOR MODULES TO MONITOR PREACTION PANEL

-ALARM

-SUPERVISORY

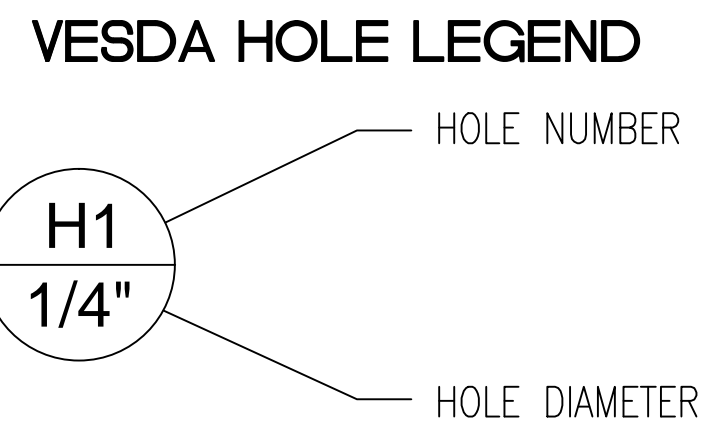

-TROUBLE

PROVIDE (20V AC, 200 AMP) DEDICATED CIRCUIT FOR THE POWER SUPPLY.

CONTROL RELAY (HTR-4) IS PROVIDED FOR DOWN CONTROLS ACTIVATION.

07/20/12	DESIGN REVISION	-	
11/21/11	DESIGN REVISION	-	
07/21/11	DESIGN REVISION	-	
05/02/11	FULLERTON FIRE DEPARTMENT CORRECTIONS	-	
11/30/10	DISPATCH PATCHES	LF	
07/30/10	DISPATCH PATCHES	LF	
11.05.09	BACKGROUND REVISIONS	PM	
No.	Date	Remarks	Initial

FIRE ALARM FLOORPLAN
LOWER LEVEL – AREA 0

EF3.00 

CHAPTER 17 OF NFPA (17.7.3.6.8) STATES THAT THE ASPIRATING AIR PIPE MUST BE LABELED "SMOKE DETECTOR SAMPLING TUBE - DO NOT DISTURB" AS FOLLOWS:

1. AT CHANGES IN DIRECTION OR BRANCHES OF PIPING.
2. AT EACH SIDE OF PENETRATION OF WALLS, FLOORS OR OTHER BARRIERS.
3. AT INTERVALS ON PIPING THAT PROVIDE VISIBILITY WITHIN THE SPACE, BUT NOT GREATER THAN 20 FEET.

1.) ALL RACEWAY RUNS INDICATED WITHIN THIS DRAWING PACKAGE ARE SHOWN DIAGRAMMATICALLY AND ARE FOR CIRCUITING PURPOSES ONLY. ALL RUNS SHOWN SHOULD NOT SERVE IN ANY WAY AS AN ACTUAL ROUTING GUIDE FOR INSTALLATION OF RACEWAYS. EXACT INSTALL LOCATION SHALL BE FIELD DETERMINED.

